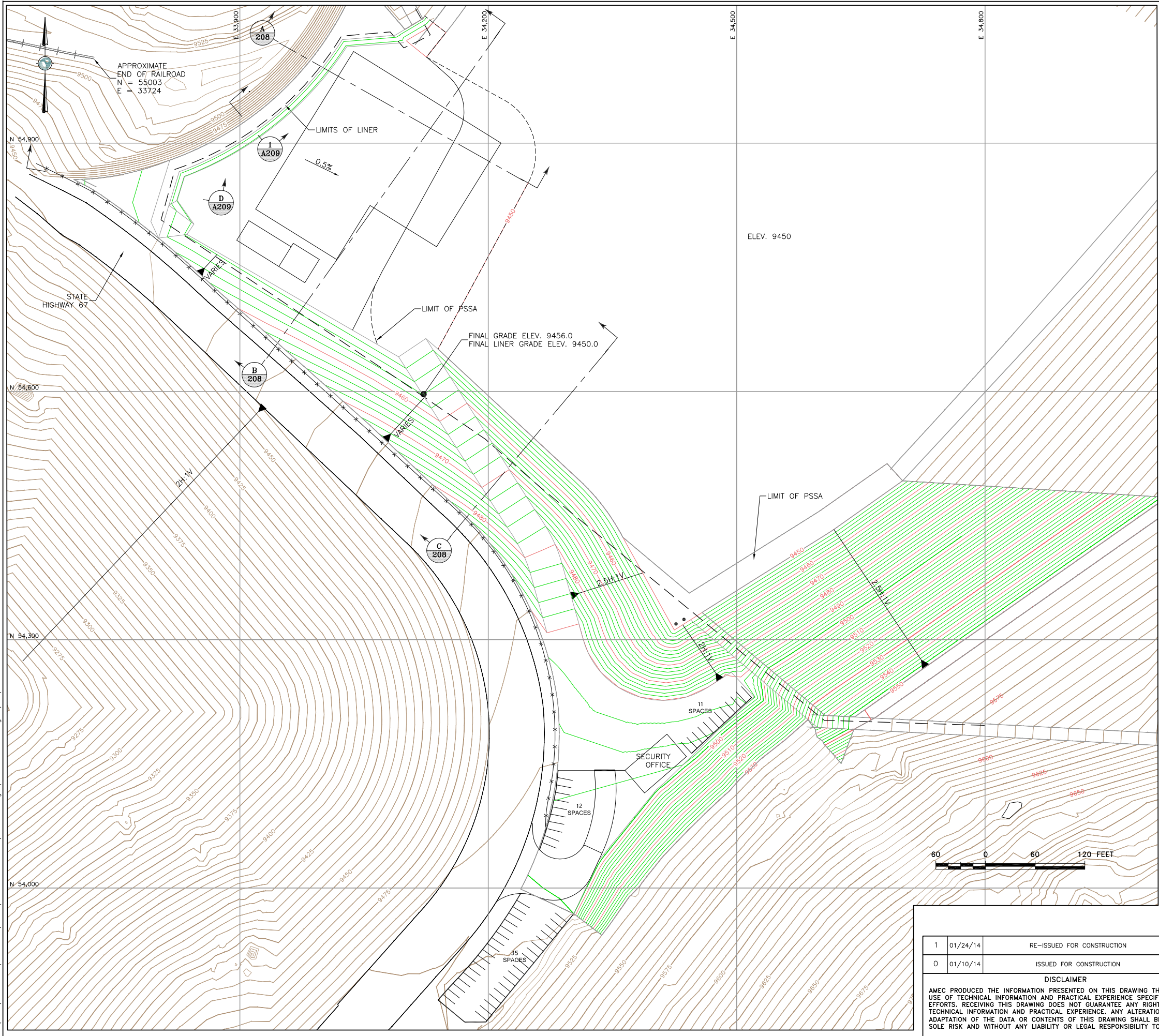


S:\CAD\1125G-Squaw VLF\cadd\CADD Drawings\A207-1125G.dwg-2/13/2014 9:58 AM



LEGEND:

- EXISTING GROUND SURFACE CONTOUR AND EL. FEET (LAND SURVEY) (5' INTERVAL)
- PROPOSED GROUND SURFACE CONTOUR AND EL. FEET (2' INTERVAL)
- DAYLIGHT LINE
- EXISTING RAILROAD
- ULTIMATE LIMITS OF SQUAW GULCH GEOMEMBRANE

REFERENCE:

EXISTING GROUND TOPOGRAPHY WAS CREATED BY COMBINING THE FOLLOWING FILES: RECV FROM FORESIGHT WEST SURVEYING, INC.:
SQUAW GULCH BASE TOPO - PHASE 1 - REVISED.DWG
(RECV MARCH 14, 2010)
SQUAW GULCH BASE TOPO - PHASE 2.DWG
(RECV APRIL 24, 2010)
SQUAW GULCH BASE TOPO - PHASE 3.DWG
(RECV MAY 4, 2010)
CCV TOPO EXPANSION 12-29-10 NORTH AREA.DWG
(RECV JANUARY 13, 2011)
CCV TOPO EXPANSION 01-28-11 SOUTH AREA.DWG
(RECV JANUARY 28, 2011)
SH67 TOPO 7-07-11.DWG
(RECV JULY 11, 2011)
VLF2 TOPO EXPANSION 8-05-11.DWG
(RECV AUGUST 9, 2011)
09028-COMPOSITE-TOPO MLE LIMITS.DWG
(RECV MAY 28, 2010 FROM CC&V)



CLIENT CRIPPLE CREEK & VICTOR GOLD MINING COMPANY

PROJECT SQUAW GULCH VLF

TITLE
ADR PLANT PLATFORM &
PSSA FINAL GRADING PLAN

1	01/24/14	RE-ISSUED FOR CONSTRUCTION	MEN	BDP
0	01/10/14	ISSUED FOR CONSTRUCTION	MEN	PBS

DISCLAIMER

AMEC PRODUCED THE INFORMATION PRESENTED ON THIS DRAWING THROUGH THE USE OF TECHNICAL INFORMATION AND PRACTICAL EXPERIENCE SPECIFIC TO ITS EFFORTS. RECEIVING THIS DRAWING DOES NOT GUARANTEE ANY RIGHTS TO SUCH TECHNICAL INFORMATION AND PRACTICAL EXPERIENCE. ANY ALTERATION OR ADAPTATION OF THE DATA OR CONTENTS OF THIS DRAWING SHALL BE AT USER'S SOLE RISK AND WITHOUT ANY LIABILITY OR LEGAL RESPONSIBILITY TO AMEC.



DESIGNED BY	JNM	CHECKED BY	MEN
DRAWN BY	PBS	APPROVED BY	MEN
FILENAME A207-1125G		DRAWING No. A207	REV 1