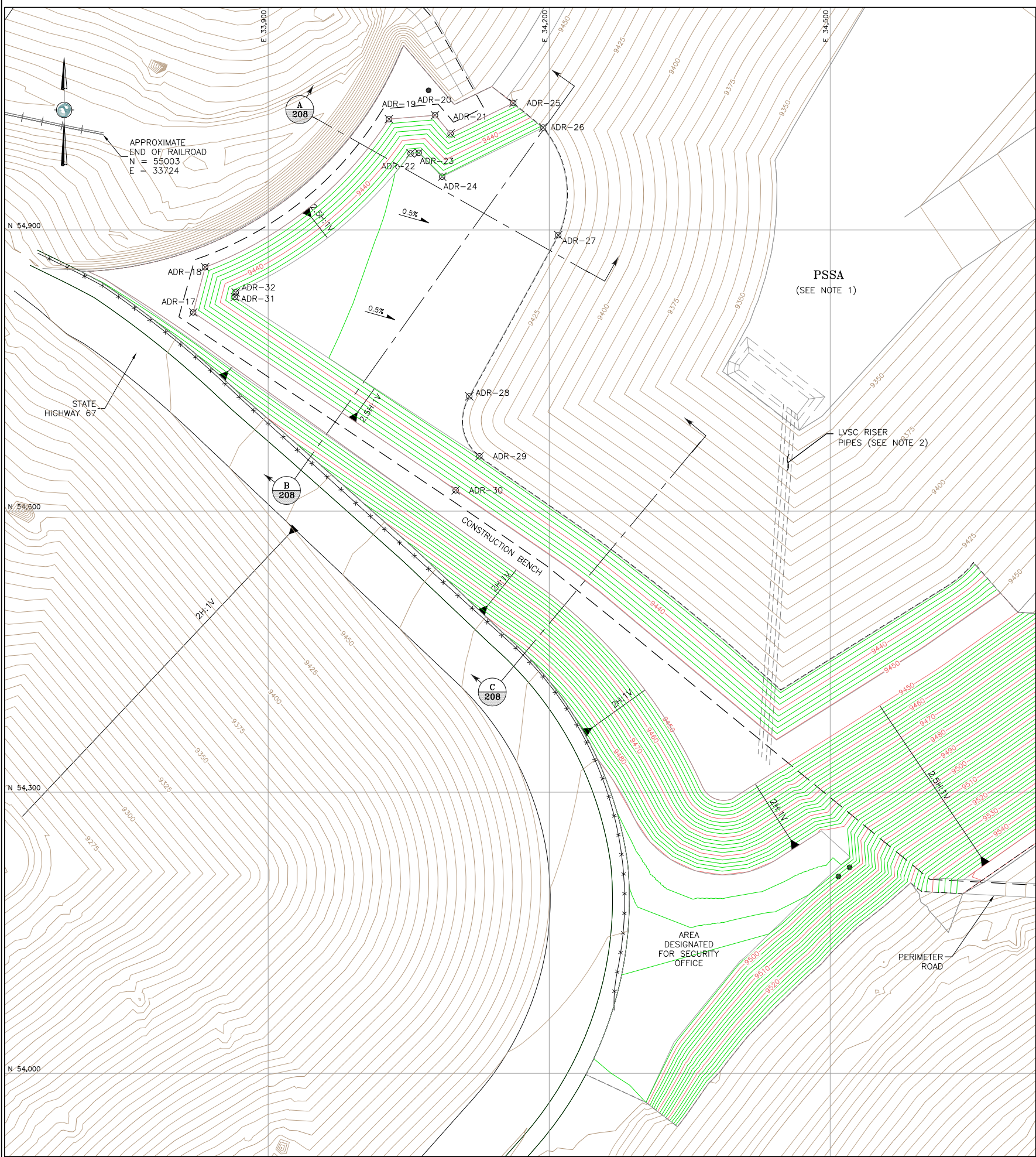


S:\CAD\1125G-Squaw VLF\cadd\CADD Drawings\A206-1125G.dwg-2/13/2014 9:59 AM



**LEGEND:**

- EXISTING GROUND SURFACE CONTOUR AND EL. FEET (5' INTERVAL)
- PROPOSED GROUND SURFACE CONTOUR AND EL. FEET (2' INTERVAL)
- DAYLIGHT LINE
- EXISTING RAILROAD
- STATE HIGHWAY 67
- ULTIMATE LIMITS OF SQUAW GULCH GEOMEMBRANE
- LEAK DETECTION SUMP

**NOTES:**

- GRADING SHOWN REPRESENTS TOP OF PRIMARY GEOMEMBRANE LINER, WHICH IS EQUIVALENT THE THE TOP OF LOW-VOLUME SOLUTION COLLECTION FILL.
- LOW-VOLUME SOLUTION COLLECTION RISER LOCATION IS APPROXIMATE AND MAY BE RELOCATED DURING CONSTRUCTION FOR EASE OF INSTALLATION AND OPERATION, AS DIRECTED BY THE OWNER.

**REVISION NOTE:**

- THIS DRAWING REPLACES DRAWING A206-TOP OF SOIL LINER FILL GRADING PLAN, WHICH WAS INITIALLY "ISSUED FOR CONSTRUCTION" ON 10 JAN. 2014.

ADR PLATFORM SETOUT DATA			
POINT #	ELEVATION	NORTHING	EASTING
ADR-17	9450.00	54812.15	33819.94
ADR-18	9450.00	54860.37	33832.65
ADR-19	9450.00	55018.37	34028.93
ADR-20	9450.00	55022.49	34078.11
ADR-21	9450.00	55003.08	34094.73
ADR-22	9433.92	54981.67	34052.02
ADR-23	9433.87	54982.40	34060.81
ADR-24	9433.70	54956.96	34085.66
ADR-25	9450.00	55035.51	34161.66
ADR-26	9433.00	55009.48	34193.54
ADR-27	9433.00	54894.59	34209.65
ADR-28	9433.00	54722.55	34114.68
ADR-29	9433.00	54658.56	34125.56
ADR-30	9450.00	54622.24	34100.16
ADR-31	9434.62	54828.61	33864.33
ADR-32	9434.63	54833.40	33865.37

**REFERENCE:**

EXISTING GROUND TOPOGRAPHY WAS CREATED BY COMBINING THE FOLLOWING FILES RECV FROM FORESIGHT WEST SURVEYING, INC.:  
SQUAW GULCH BASE TOPO - PHASE 1 - REVISED.DWG (RCV MARCH 14, 2010)  
SQUAW GULCH BASE TOPO - PHASE 2.DWG (RCV APRIL 24, 2010)  
SQUAW GULCH BASE TOPO - PHASE 3.DWG (RCV MAY 4, 2010)  
CCV TOPO EXPANSION 12-29-10 NORTH AREA.DWG (RCV JANUARY 13, 2011)  
CCV TOPO EXPANSION 01-28-11 SOUTH AREA.DWG (RCV JANUARY 28, 2011)  
SH67 TOPO 7-07-11.DWG (RCV JULY 11, 2011)  
VLF2 TOPO EXPANSION 5-05-11.DWG (RCV AUGUST 9, 2011)  
09028-COMPOSITE-TOPO MLE LIMITS.DWG (RCV MAY 28, 2010 FROM CC&V)



1	01/24/14	RE-ISSUED FOR CONSTRUCTION	MEN	PBS
0	01/10/14	ISSUED FOR CONSTRUCTION	MEN	PBS

**DISCLAIMER**

AMEC PRODUCED THE INFORMATION PRESENTED ON THIS DRAWING THROUGH THE USE OF TECHNICAL INFORMATION AND PRACTICAL EXPERIENCE SPECIFIC TO ITS EFFORTS. RECEIVING THIS DRAWING DOES NOT GUARANTEE ANY RIGHTS TO SUCH TECHNICAL INFORMATION AND PRACTICAL EXPERIENCE. ANY ALTERATION OR ADAPTATION OF THE DATA OR CONTENTS OF THIS DRAWING SHALL BE AT USER'S SOLE RISK AND WITHOUT ANY LIABILITY OR LEGAL RESPONSIBILITY TO AMEC.

CLIENT CRIPPLE CREEK & VICTOR GOLD MINING COMPANY			
PROJECT SQUAW GULCH VLF			
TITLE ADR PLANT PLATFORM TOP OF PRIMARY LINER GRADING PLAN			
DESIGNED BY	JNM	CHECKED BY	MEN
DRAWN BY	PBS	APPROVED BY	MEN
FILENAME A206-1125G		DRAWING No. A206	REV 1

