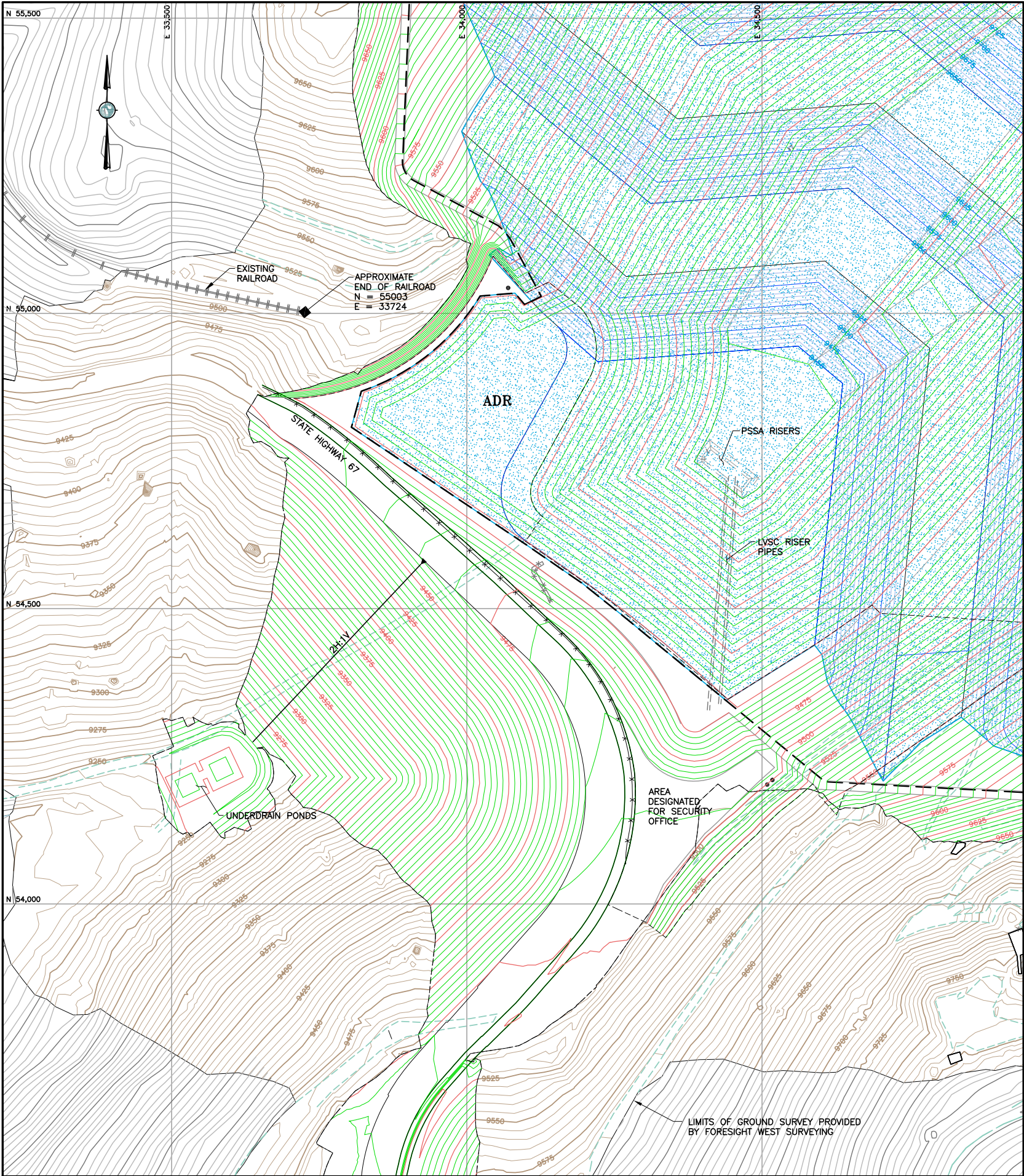


S:\CAD\1125G-Squaw VLF\cadd\CADD Drawings\A204-1125m66.dwg 1/21/2013 2:41 PM



LEGEND:

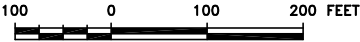
- 9200 EXISTING GROUND SURFACE CONTOUR AND EL, FEET (AERIAL SURVEY)
- 9200 EXISTING GROUND SURFACE CONTOUR AND EL, FEET (LAND SURVEY)
- 9200 PROPOSED GROUND SURFACE CONTOUR AND EL. FEET
- 9200 PROPOSED ULTIMATE ORE GROUND SURFACE CONTOUR AND EL. FEET
- DAYLIGHT LINE
- EXISTING UNIMPROVED ROAD/TRAILS
- EXISTING DRAINAGES
- EXISTING RAILROAD
- STATE HIGHWAY 67
- ULTIMATE LIMITS OF SQUAW GULCH GEOMEMBRANE
- LIMITS OF ORE
- PROPOSED CRIB WALL
- LEAK DETECTION SUMP
- EXISTING BUILDING

NOTE:

- FOR CRIB WALL CONSTRUCTION DETAILS, SEE DRAWING A800.
- ADR SHOWN FOR REFERENCE ONLY.
- REMOVED EXISTING UTILITIES FROM DRAWING AND UNDERDRAIN PUMPBACK PIPES.
- UNDERDRAIN POND HAS BEEN REVISED.
- PSSA EMBANKMENT HAS BEEN WIDENED BY 2'.

REVISION NOTE:

- THIS DRAWING REPLACES DRAWING A204-PHASE 1 GRADING HORIZONTAL ALIGNMENT DATA SHEET 2 OF 2, WHICH WAS INITIALLY "ISSUED FOR CONSTRUCTION" ON 07 JAN. 2013.



REFERENCE:

EXISTING GROUND TOPOGRAPHY WAS CREATED BY COMBINING THE FOLLOWING FILES  
REC'D FROM FORESIGHT WEST SURVEYING, INC.:  
SQUAW GULCH BASE TOPO - PHASE 1 - REVISED.DWG  
(REC'D MARCH 14, 2010)  
SQUAW GULCH BASE TOPO - PHASE 2.DWG  
(REC'D APRIL 24, 2010)  
SQUAW GULCH BASE TOPO - PHASE 3.DWG  
(REC'D MAY 4, 2010)  
CCV TOPO EXPANSION 12-29-10 NORTH AREA.DWG  
(REC'D JANUARY 13, 2011)  
CCV TOPO EXPANSION 01-28-11 SOUTH AREA.DWG  
(REC'D JANUARY 28, 2011)  
SH67 TOPO 7-07-11.DWG  
(REC'D JULY 11, 2011)  
VLF2 TOPO EXPANSION 8-05-11.DWG  
(REC'D AUGUST 9, 2011)  
09028-COMPOSITE-TOPO MLE LIMITS.DWG  
(REC'D MAY 28, 2010 FROM CC&V)

1	02/13/14	REV. ADR SITE GRADING/RE-ISSUED FOR CONSTRUCTION	MEN
			PBS
0	01/07/13	ISSUED FOR CONSTRUCTION	JNM
			CMT

DISCLAIMER

AMEC PRODUCED THE INFORMATION PRESENTED ON THIS DRAWING THROUGH THE USE OF TECHNICAL INFORMATION AND PRACTICAL EXPERIENCE SPECIFIC TO ITS EFFORTS. RECEIVING THIS DRAWING DOES NOT GUARANTEE ANY RIGHTS TO SUCH TECHNICAL INFORMATION AND PRACTICAL EXPERIENCE. ANY ALTERATION OR ADAPTATION OF THE DATA OR CONTENTS OF THIS DRAWING SHALL BE AT USER'S SOLE RISK AND WITHOUT ANY LIABILITY OR LEGAL RESPONSIBILITY TO AMEC.



CLIENT				CRIPPLE CREEK & VICTOR GOLD MINING COMPANY			
PROJECT				SQUAW GULCH VLF			
TITLE				PSSA EMBANKMENT LAYOUT			
DESIGNED BY	JNM	CHECKED BY	JNM	DRAWN BY	JNM	APPROVED BY	KFM
FILENAME		DRAWING No.		REV			
1125GM66		A204		1			

