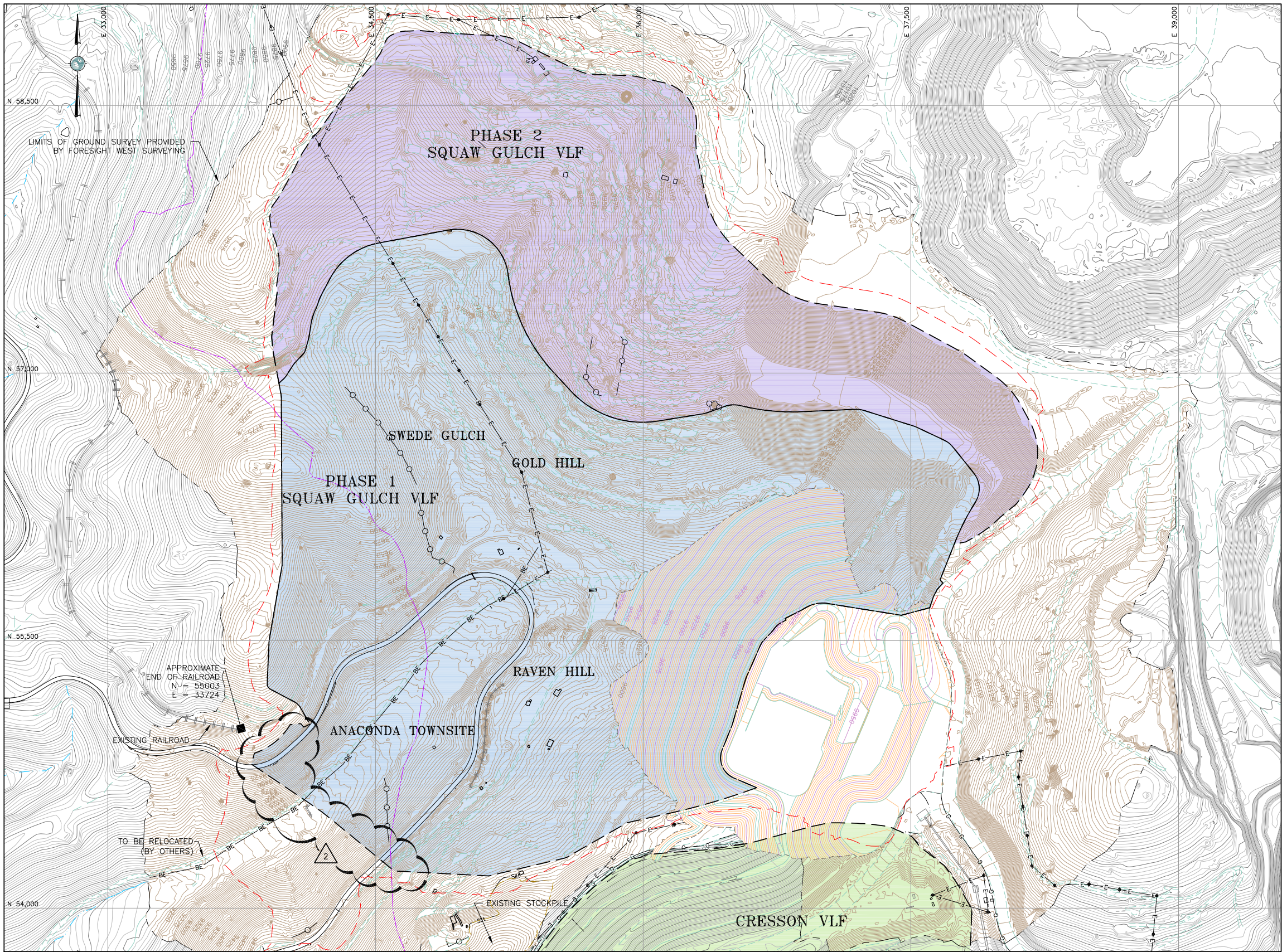
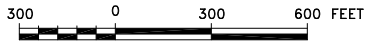


S:\CADD\1125G-Squaw VLF\Cadd Drawings\IFC Drawings\A020-a020-1125GMO2.dwg 1/17/2013 9:36 AM



REFERENCE:
EXISTING GROUND TOPOGRAPHY WAS CREATED BY COMBINING THE FOLLOWING FILES
REC'D FROM FORESIGHT WEST SURVEYING, INC.:
SQUAW GULCH BASE TOPO - PHASE 1 - REVISED.DWG
(REC'D MARCH 14, 2010)
SQUAW GULCH BASE TOPO - PHASE 2.DWG
(REC'D APRIL 24, 2010)
SQUAW GULCH BASE TOPO - PHASE 3.DWG
(REC'D MAY 4, 2010)
CCV TOPO EXPANSION 12-29-10 NORTH AREA.DWG
(REC'D JANUARY 13, 2011)
CCV TOPO EXPANSION 01-28-11 SOUTH AREA.DWG
(REC'D JANUARY 28, 2011)
SH67 TOPO 7-07-11.DWG
(REC'D JULY 11, 2011)
VLF2 TOPO EXPANSION 8-05-11.DWG
(REC'D AUGUST 9, 2011)
09028-COMPOSITE-TOPO MLE LIMITS.DWG
(REC'D MAY 28, 2010 FROM CC&V)



LEGEND:

- 100 EXISTING GROUND SURFACE CONTOUR EL, FEET (AERIAL SURVEY)
- 100 EXISTING GROUND SURFACE CONTOUR EL, FEET (LAND SURVEY)
- 100 MILL PLATFORM GROUND SURFACE CONTOUR EL, FEET
- HIGHWAY 67
- EXISTING ROADS
- EXISTING DRAINAGES
- DIATREME BOUNDARY
- EXISTING RAILROAD
- EXISTING POWER CABLE
- EXISTING UNDERGROUND POWER CABLE
- EXISTING FENCE
- EXISTING WATER LINE
- EXISTING GAS LINE
- EXISTING CRIB WALL
- SQUAW GULCH VLF BOUNDARY (LIMITS OF LINER)
- SILT FENCE
- EXISTING BUILDING
- EXISTING CULVERT
- PHASE 1
- PHASE 2
- CRESSON VLF

NOTE:

- FOR INFORMATION ONLY -- TO BE CONFIRMED BY CONTRACTOR.
- UPDATED EXISTING GROUND TO INCLUDE MILL PLATFORM.



CLIENT	CRIPPLE CREEK & VICTOR GOLD MINING COMPANY			
PROJECT	SQUAW GULCH VLF			
TITLE	EXISTING SITE CONDITIONS			
DESIGNED BY	JNM	CHECKED BY	JNM	
DRAWN BY	DS	APPROVED BY	JNM	
FILENAME 1125G		DRAWING No. A020	REV 2	

2	02/13/14	REVISED LINER LIMITS RE-ISSUED FOR CONSTRUCTION	MN PBS
1	08/15/13	REVISED HAUL ROAD RE-ISSUED FOR CONSTRUCTION	MN PBS
0	01/07/13	ISSUED FOR CONSTRUCTION	JNM CMT

DISCLAIMER
AMEC PRODUCED THE INFORMATION PRESENTED ON THIS DRAWING THROUGH THE USE OF TECHNICAL INFORMATION AND PRACTICAL EXPERIENCE SPECIFIC TO ITS EFFORTS. RECEIVING THIS DRAWING DOES NOT GUARANTEE ANY RIGHTS TO SUCH TECHNICAL INFORMATION AND PRACTICAL EXPERIENCE. ANY ALTERATION OR ADAPTATION OF THE DATA OR CONTENTS OF THIS DRAWING SHALL BE AT USER'S SOLE RISK AND WITHOUT ANY LIABILITY OR LEGAL RESPONSIBILITY TO AMEC.

