

SUPERIOR OILFIELD
SERVICES CO LTD

THIS MAP WAS PREPARED BY KING SURVEYORS IN CONJUNCTION WITH SUPERIOR OIL FIELD SERVICES CO (SOFSO). THE EXACT CONFIGURATION OF THE MINING PONDS AND STOCKPILES MAY CHANGE TO RESPOND TO FIELD CONDITIONS. SOFSO WILL KEEP THE DRMS INFORMED OF ANY CHANGES THROUGH ANNUAL REPORTS AS NECESSARY THROUGHOUT THE LIFE OF THE MINE.

SUPERIOR OIL FIELD SERVICES CO LTD

CHECKED BY:










SHEET 1 OF

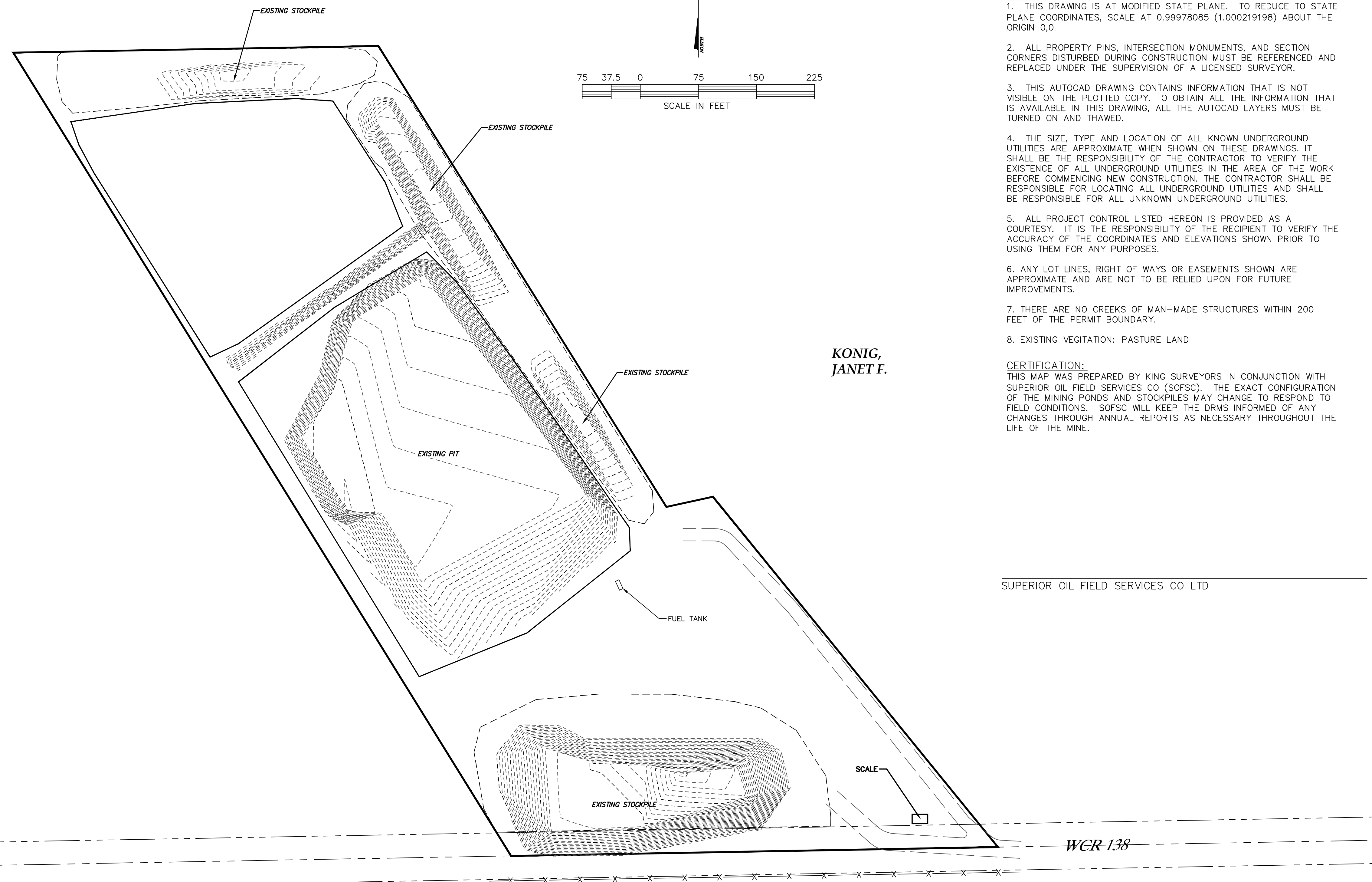


PROPERTY DESCRIPTION

Said described parcel of land contains 546,790 sq. ft. or 12.553 acres, more or less and is subject to any existing easements and rights of way of record or as now existing on said described parcel of land.

LEGEND

	PERMIT/ AFFECTED LAND BOUNDARY
	PROPOSED STOCKPILE AREA
	PROPOSED PIT BOUNDARY
	EDGE OF GRAVEL ROAD/ ACCESS
	RIGHT OF WAY
	FENCE LINE
	ONE FOOT CONTOUR
	5 FOOT CONTOUR
	SECTION LINE



**PETERS 313
RANCH INC.**