

TCL

STATE OF
COLORADO

Cazier - DNR, Tim <tim.cazier@state.co.us>

FW: M-1999-033 Second Adequacy Review

1 message

Annette Ortega <annette.ortega@fremontco.com>
To: "tim.cazier@state.co.us" <tim.cazier@state.co.us>

Tue, Oct 15, 2013 at 3:11 PM

Hi again,

I don't see where I sent this to you after Matt made changes, and I can't remember if I did or not!!!! Attached are the changes after you spoke with Curtis Stone today. Let me know what else is needed.

Thanks!

Annette Ortega
FCDOT Office Manager
Phone: 719-275-2047
Fax: 719-275-2120
annette.ortega@fremontco.com

"I am personally convinced that one person can be a change catalyst, a transporter, in any situation, any organization. Such an individual is yeast that can leaven an entire loaf. It requires vision, initiative, patience, respect, persistence, courage, and faith to be a transforming leader".....Stephen R. Covey

From: Matt Koch [cssurveying@bresnan.net]
Sent: Tuesday, October 15, 2013 9:56 AM
To: Annette Ortega
Subject: Re: M-1999-033 Second Adequacy Review

Hey Annette, attached are the latest maps... Please look at them w/ curtis and let me know if you see anything else.

Matt

On Fri, 11 Oct 2013 11:33:06 -0600

Annette Ortega <annette.ortega@fremontco.com> wrote:

> Hi Tim,

>

> We are closed on Fridays, but I have been checking my email from home to
> make sure I stay on top of this. We really want to try and avoid filing an
> extension, so I have forwarded your email to Matt Koch, our surveyor. I'm
> wondering if it would be best that you contact him directly on the map
> portion, as he is the person who is preparing all of that. I've included
> Matt in this email so that you have his contact information.

>

> Tony is out all next week, so I will try to get things handled, but I do not
> understand parts of it, and that is why I suggested speaking directly with
> Matt. If nothing else, I will have Curtis speak with you next week, as he is
> our gravel pit Supervisor and he understands more than I do. I will be out
> of reach for a while today, but will keep checking back when I can.

>

> Thank you!

>
> Annette Ortega
> FCDOT Office Manager
> Phone: 719-275-2047
> Fax: 719-275-2120
> annette.ortega@fremontco.com<<mailto:annette.ortega@fremontco.com>>
>
> "I am personally convinced that one person can be a change catalyst, a
> transporter, in any situation, any organization. Such an individual is yeast
> that can leaven an entire loaf. It requires vision, initiative, patience,
> respect, persistence, courage, and faith to be a transforming
> leader".....Stephen R. Covey
>
>
> From: Cazier - DNR, Tim [tim.cazier@state.co.us]
> Sent: Friday, October 11, 2013 10:59 AM
> To: Annette Ortega
> Subject: M-1999-033 Second Adequacy Review
>
> Annette,
>
> I tried calling you this morning for some clarification, but apparently you
> are out of the office. So, my adequacy is a bit longer to explain options.
>
> A hard copy of the attached letter (and its enclosures) will go out with
> today's mail to Tony Adamic. Please call me when you have some time to
> discuss the new comments.
>
> Tim Cazier, P.E.
> Environmental Protection Specialist
> Colorado Division of Reclamation, Mining and Safety
> 1313 Sherman Street, Room 215
> Denver, CO 80203
> ph: 303-866-3567 x8169
> NEW cell: 303-328-5229
> fax: 303-832-8106
> tim.cazier@state.co.us<<mailto:tim.cazier@state.co.us>>

CORNERSTONE LAND SURVEYING
1117 MAIN STREET
CANON CITY, CO. 81212
[719-275-8881](tel:719-275-8881) TELE
[719-275-1602](tel:719-275-1602) FAX

3 attachments

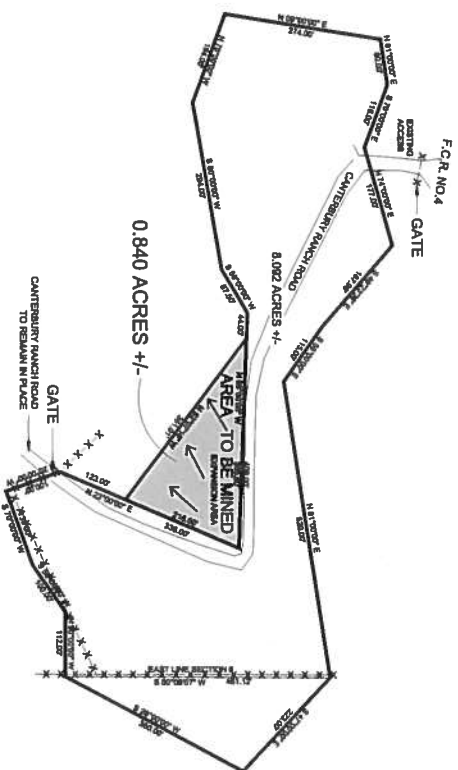
 **MININGPL10-15.pdf**
1630K

 **NEIGH10-15.pdf**
1919K

 **RECMAP10-15.pdf**
1679K

HOWARD CREEK PIT #1 & #2 MINING PLAN MAP

LOCATED IN SECTION 6, TOWNSHIP 48 SOUTH, RANGE 10 WEST OF THEN.M.P.M. FREMONT COUNTY, COLORADO



NOTES:

1) DIMENSIONS SHOWN ARE BASED UPON PREVIOUS LEGAL INFORMATION AND SURVEY WORK PROVIDED BY PREVIOUS APPLICANT. LEGAL DESCRIPTION DERIVED FROM INFORMATION PROVIDED.

THIS MAP AND INFORMATION SHOWN HEREON WAS PREPARED FOR AND ON BEHALF OF THE COUNTY OF FREMONT, BY CORNERSTONE LAND SURVEYING, L.L.C. ALL INFORMATION SHOWN WAS PROVIDED BY FREMONT COUNTY AND DERIVED FROM INFORMATION IN THE RECORDS OF THE FREMONT COUNTY PLANNING AND ZONING OFFICE.

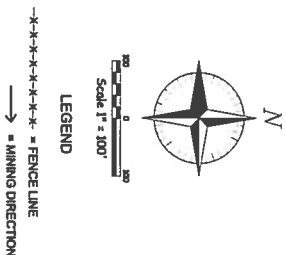
MATTHEW J. KOCH C.R.S. 37807 DATE



NEW PERMIT BOUNDARY LEGAL DESCRIPTION:

BEGINNING AT A POINT ON THE EAST LINE OF SECTION 8, TOWNSHIP 48 NORTH, RANGE 10 EAST OF THE N.M.P.M. FROM WHENCE THE SOUTHEAST CORNER BEARS S 07°09'07" E, 43.00'; TOWNSHIP 48 NORTH, RANGE 10 EAST OF THE N.M.P.M.; THENCE N 87°00'00" W, 112.00'; THENCE S 85°00'00" W, 100.00'; THENCE S 70°00'00" W, 135.00'; THENCE N 20°00'00" W, 100.00'; THENCE N 23°00'00" E, 123.00'; THENCE N 63°07'46" W, 351.01'; THENCE N 88°00'00" W, 44.00'; THENCE S 89°00'00" W, 87.50'; THENCE S 80°00'00" W, 294.00'; THENCE N 70°00'00" W, 164.00'; THENCE N 09°00'00" E, 274.00 FEET; THENCE N 81°00'00" E, 80.00'; THENCE S 70°00'00" E, 118.00'; THENCE N 74°00'00" E, 177.00'; THENCE S 49°23'38" E, 187.86'; THENCE S 55°00'00" E, 115.00'; THENCE N 81°00'00" E, 620.00' TO A POINT ON THE EAST LINE OF SAID SECTION 8; THENCE S 80°09'07" E, 481.12' TO THE POINT OF BEGINNING.

CONTAINING 8.002 ACRES MORE OR LESS



CORNERSTONE
LAND SURVEYING, L.L.C.
1022 E. 7th AVE.
CANYON CITY, CO 81212
719.218-8881
JOB NO 13-056 REV 10-15-2013

NOTICE: THIS MAP AND INFORMATION SHOWN HEREON WAS PREPARED FOR AND ON BEHALF OF THE COUNTY OF FREMONT, BY CORNERSTONE LAND SURVEYING, L.L.C. ALL INFORMATION SHOWN WAS PROVIDED BY FREMONT COUNTY AND DERIVED FROM INFORMATION IN THE RECORDS OF THE FREMONT COUNTY PLANNING AND ZONING OFFICE.

HOWARD CREEK PIT #1 & #2

NEIGHBORING LANDOWNERS

LOCATED IN SECTION 6, TOWNSHIP 48 SOUTH, RANGE 10 WEST OF THEN.M.P.M. FREMONT COUNTY, COLORADO

FOWLER JOHN E & MARY J
7204 ISLAND GREEN DR
BOULDER, CO 80301-3773

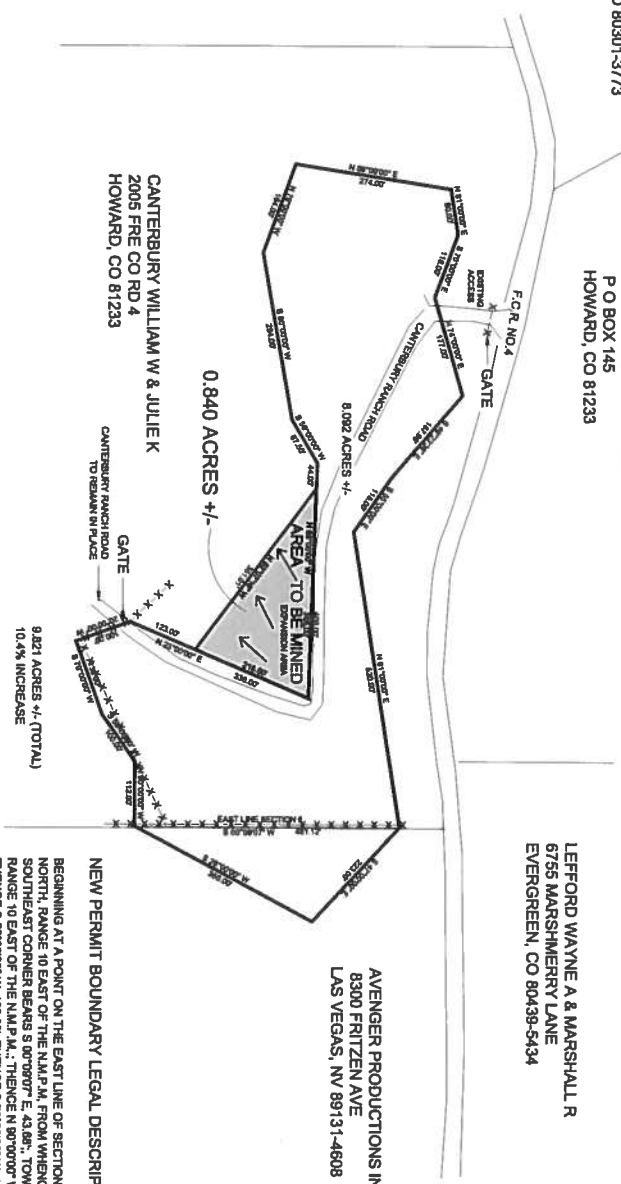
COOPER CARL V & SUSAN K
P O BOX 145
HOWARD, CO 81233

LEFFORD WAYNE A & MARSHALL R
6755 MARSHMERRY LANE
EVERGREEN, CO 80439-5434

CAVALLO MARY JANE
BELDEN KATHERINE H
6827 4TH ST N.W.#316
WASHINGTON, DC
20012-2000

AVENGER PRODUCTIONS INC
8300 FRITZEN AVE
LAS VEGAS, NV 89131-4608

CANTERBURY WILLIAM W & JULIE K
2005 FRE CO RD 4
HOWARD, CO 81233



NOTES:

1, DIMENSIONS SHOWN ARE BASED UPON PREVIOUS LEGAL INFORMATION AND SURVEY WORK PROVIDED BY PREVIOUS APPLICANT. LEGAL DESCRIPTION DERIVED FROM INFORMATION PROVIDED.

THIS MAP AND INFORMATION SHOWN HEREON WAS PREPARED FOR AND ON BEHALF OF THE CANADIAN MINING ASSOCIATION BY CORNERSTONE LAND SURVEYING, L.L.C. ALL INFORMATION SHOWN WAS PROVIDED BY THE CANADIAN MINING ASSOCIATION. INFORMATION IN THE RECORDS OF THE FREMONT COUNTY PLANNING AND ZONING OFFICE.

MATTHEW J. KOCH C.P.L.S. 37807

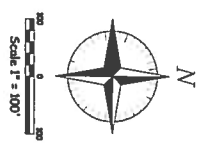
DATE



NEW PERMIT BOUNDARY LEGAL DESCRIPTION:

BEGINNING AT A POINT ON THE EAST LINE OF SECTION 8, TOWNSHIP 48 NORTH, RANGE 10 EAST OF THE N.M.P.M., FROM WHENCE THE SOUTHEAST CORNER BEARS S 00°00'00" E, 43.00', TOWNSHIP 48 NORTH, RANGE 10 EAST OF THE N.M.P.M.; THENCE N 80°00'00" W, 112.00'; THENCE S 80°00'00" W, 100.00'; THENCE S 70°00'00" W, 130.00'; THENCE N 20°00'00" W, 100.00'; THENCE N 23°00'00" E, 123.00'; THENCE N 50°07'16" W, 30.10'; THENCE N 80°00'00" W, 44.00'; THENCE S 80°00'00" W, 87.50'; THENCE S 80°00'00" W, 284.00'; THENCE N 70°00'00" W, 194.00'; THENCE N 09°00'00" E, 274.00 FEET; THENCE N 61°00'00" E, 80.00'; THENCE S 70°00'00" E, 116.00'; THENCE N 74°00'00" E, 177.00'; THENCE S 40°23'35" E, 87.80'; THENCE S 80°00'00" E, 116.00'; THENCE N 61°00'00" E, 620.00' TO A POINT ON THE EAST LINE OF SAID SECTION 8; THENCE S 00°00'00" E, 461.12' TO THE POINT OF BEGINNING.

CONTAINING 8.082 ACRES MORE OR LESS



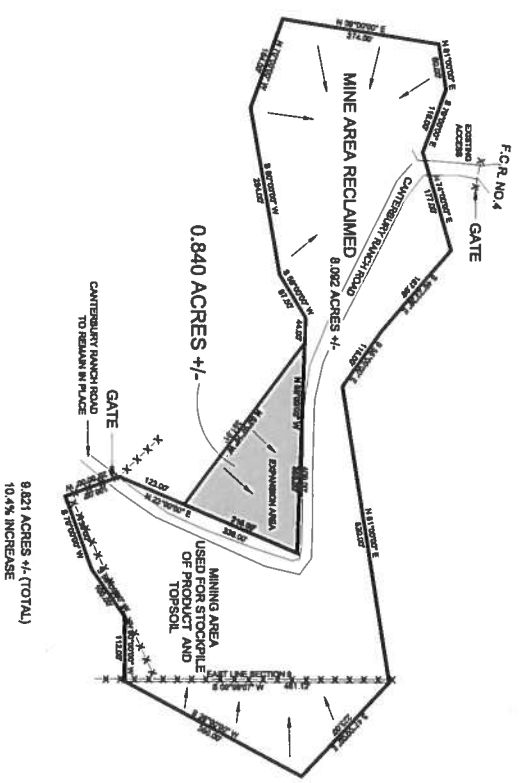
LEGEND
***** = FENCE LINE
—> = MINING DIRECTION

CORNERSTONE
LAND SURVEYING, L.L.C.
1022 PHAY AVE.
CANYON CITY, COLORADO 81212
719-275-0881
JOB NO. 13-056 REV 7-3-2013
REV 10-15-2013

NOTES:
ACCORDING TO C.R.S. 13-60-103, YOU AGREE TO COMPENSATE ANY LEGAL ACTION BASED UPON ANY DEFECT IN THIS SURVEY WITHIN THREE YEARS AFTER YOU FIRST RECEIVE SUCH DEFECT. YOU AGREE TO HOLD ANY AND ALL ADJUDICATORS HARMLESS FROM ANY AND ALL SUCH DEFECTS. YOU AGREE TO BE CONSIDERED AS HAVING TAKEN FROM THE DATE OF THE CERTIFICATE SHOWN HEREON.

HOWARD CREEK PIT #1 & #2 RECLAMATION MAP

LOCATED IN SECTION 6, TOWNSHIP 48 SOUTH, RANGE 10 WEST OF THEN.M.P.M. FREMONT COUNTY, COLORADO



NEW PERMIT BOUNDARY LEGAL DESCRIPTION:

BEGINNING AT A POINT ON THE EAST LINE OF SECTION 8, TOWNSHIP 48 NORTH, RANGE 10 EAST OF THE N.M.P.M. FROM WHENCE THE SOUTHEAST CORNER BEARS S. 00°09'00" E., 43.88'; TOWNSHIP 48 NORTH, RANGE 10 EAST OF THE N.M.P.M.; THENCE S. 70°00'00" W., 112.00'; THENCE S. 65°00'00" W., 100.00'; THENCE S. 70°00'00" W., 135.00'; THENCE N. 20°00'00" W., 100.00'; THENCE N. 23°00'00" E., 123.00'; THENCE N. 53°07'16" W., 351.01'; THENCE N. 89°00'00" W., 44.00'; THENCE S. 89°00'00" W., 87.50'; THENCE S. 89°00'00" W., 284.00'; THENCE N. 70°00'00" W., 184.00'; THENCE N. 09°00'00" E., 274.00 FEET; THENCE N. 81°00'00" E., 90.00'; THENCE S. 70°00'00" E., 116.00'; THENCE N. 74°00'00" E., 177.00'; THENCE S. 69°23'36" E., 187.86'; THENCE S. 65°00'00" E., 116.00'; THENCE N. 81°00'00" E., 620.00' TO A POINT ON THE EAST LINE OF SAID SECTION 8; THENCE S. 00°09'00" E., 491.12' TO THE POINT OF BEGINNING.

CONTAINING 8.092 ACRES MORE OR LESS

NOTES:
1.) DIMENSIONS SHOWN ARE BASED UPON PREVIOUS LEGAL INFORMATION AND SURVEY WORK PROVIDED BY PREVIOUS APPLICANT. LEGAL DESCRIPTION DERIVED FROM INFORMATION PROVIDED.

THIS MAP AND INFORMATION SHOWN HEREON WAS PREPARED FOR AND ON BEHALF OF THE COUNTY OF FREMONT, BY CORNERSTONE LAND SURVEYING, L.L.C.. ALL INFORMATION SHOWN WAS PROVIDED BY FREMONT COUNTY AND DERIVED FROM INFORMATION IN THE RECORDS OF THE FREMONT COUNTY PLANNING AND ZONING OFFICE.

MATTHEW J. KOCH C.R.S. 37807 DATE



NOTICE: ACCORDING TO C.R.S. 1-1-80, 1-1-81, 1-1-82, 1-1-83, 1-1-84, 1-1-85, 1-1-86, 1-1-87, 1-1-88, 1-1-89, 1-1-90, 1-1-91, 1-1-92, 1-1-93, 1-1-94, 1-1-95, 1-1-96, 1-1-97, 1-1-98, 1-1-99, 1-2-00, 1-2-01, 1-2-02, 1-2-03, 1-2-04, 1-2-05, 1-2-06, 1-2-07, 1-2-08, 1-2-09, 1-2-10, 1-2-11, 1-2-12, 1-2-13, 1-2-14, 1-2-15, 1-2-16, 1-2-17, 1-2-18, 1-2-19, 1-2-20, 1-2-21, 1-2-22, 1-2-23, 1-2-24, 1-2-25, 1-2-26, 1-2-27, 1-2-28, 1-2-29, 1-2-30, 1-2-31, 1-2-32, 1-2-33, 1-2-34, 1-2-35, 1-2-36, 1-2-37, 1-2-38, 1-2-39, 1-2-40, 1-2-41, 1-2-42, 1-2-43, 1-2-44, 1-2-45, 1-2-46, 1-2-47, 1-2-48, 1-2-49, 1-2-50, 1-2-51, 1-2-52, 1-2-53, 1-2-54, 1-2-55, 1-2-56, 1-2-57, 1-2-58, 1-2-59, 1-2-60, 1-2-61, 1-2-62, 1-2-63, 1-2-64, 1-2-65, 1-2-66, 1-2-67, 1-2-68, 1-2-69, 1-2-70, 1-2-71, 1-2-72, 1-2-73, 1-2-74, 1-2-75, 1-2-76, 1-2-77, 1-2-78, 1-2-79, 1-2-80, 1-2-81, 1-2-82, 1-2-83, 1-2-84, 1-2-85, 1-2-86, 1-2-87, 1-2-88, 1-2-89, 1-2-90, 1-2-91, 1-2-92, 1-2-93, 1-2-94, 1-2-95, 1-2-96, 1-2-97, 1-2-98, 1-2-99, 1-3-00, 1-3-01, 1-3-02, 1-3-03, 1-3-04, 1-3-05, 1-3-06, 1-3-07, 1-3-08, 1-3-09, 1-3-10, 1-3-11, 1-3-12, 1-3-13, 1-3-14, 1-3-15, 1-3-16, 1-3-17, 1-3-18, 1-3-19, 1-3-20, 1-3-21, 1-3-22, 1-3-23, 1-3-24, 1-3-25, 1-3-26, 1-3-27, 1-3-28, 1-3-29, 1-3-30, 1-3-31, 1-3-32, 1-3-33, 1-3-34, 1-3-35, 1-3-36, 1-3-37, 1-3-38, 1-3-39, 1-3-40, 1-3-41, 1-3-42, 1-3-43, 1-3-44, 1-3-45, 1-3-46, 1-3-47, 1-3-48, 1-3-49, 1-3-50, 1-3-51, 1-3-52, 1-3-53, 1-3-54, 1-3-55, 1-3-56, 1-3-57, 1-3-58, 1-3-59, 1-3-60, 1-3-61, 1-3-62, 1-3-63, 1-3-64, 1-3-65, 1-3-66, 1-3-67, 1-3-68, 1-3-69, 1-3-70, 1-3-71, 1-3-72, 1-3-73, 1-3-74, 1-3-75, 1-3-76, 1-3-77, 1-3-78, 1-3-79, 1-3-80, 1-3-81, 1-3-82, 1-3-83, 1-3-84, 1-3-85, 1-3-86, 1-3-87, 1-3-88, 1-3-89, 1-3-90, 1-3-91, 1-3-92, 1-3-93, 1-3-94, 1-3-95, 1-3-96, 1-3-97, 1-3-98, 1-3-99, 1-4-00, 1-4-01, 1-4-02, 1-4-03, 1-4-04, 1-4-05, 1-4-06, 1-4-07, 1-4-08, 1-4-09, 1-4-10, 1-4-11, 1-4-12, 1-4-13, 1-4-14, 1-4-15, 1-4-16, 1-4-17, 1-4-18, 1-4-19, 1-4-20, 1-4-21, 1-4-22, 1-4-23, 1-4-24, 1-4-25, 1-4-26, 1-4-27, 1-4-28, 1-4-29, 1-4-30, 1-4-31, 1-4-32, 1-4-33, 1-4-34, 1-4-35, 1-4-36, 1-4-37, 1-4-38, 1-4-39, 1-4-40, 1-4-41, 1-4-42, 1-4-43, 1-4-44, 1-4-45, 1-4-46, 1-4-47, 1-4-48, 1-4-49, 1-4-50, 1-4-51, 1-4-52, 1-4-53, 1-4-54, 1-4-55, 1-4-56, 1-4-57, 1-4-58, 1-4-59, 1-4-60, 1-4-61, 1-4-62, 1-4-63, 1-4-64, 1-4-65, 1-4-66, 1-4-67, 1-4-68, 1-4-69, 1-4-70, 1-4-71, 1-4-72, 1-4-73, 1-4-74, 1-4-75, 1-4-76, 1-4-77, 1-4-78, 1-4-79, 1-4-80, 1-4-81, 1-4-82, 1-4-83, 1-4-84, 1-4-85, 1-4-86, 1-4-87, 1-4-88, 1-4-89, 1-4-90, 1-4-91, 1-4-92, 1-4-93, 1-4-94, 1-4-95, 1-4-96, 1-4-97, 1-4-98, 1-4-99, 1-5-00, 1-5-01, 1-5-02, 1-5-03, 1-5-04, 1-5-05, 1-5-06, 1-5-07, 1-5-08, 1-5-09, 1-5-10, 1-5-11, 1-5-12, 1-5-13, 1-5-14, 1-5-15, 1-5-16, 1-5-17, 1-5-18, 1-5-19, 1-5-20, 1-5-21, 1-5-22, 1-5-23, 1-5-24, 1-5-25, 1-5-26, 1-5-27, 1-5-28, 1-5-29, 1-5-30, 1-5-31, 1-5-32, 1-5-33, 1-5-34, 1-5-35, 1-5-36, 1-5-37, 1-5-38, 1-5-39, 1-5-40, 1-5-41, 1-5-42, 1-5-43, 1-5-44, 1-5-45, 1-5-46, 1-5-47, 1-5-48, 1-5-49, 1-5-50, 1-5-51, 1-5-52, 1-5-53, 1-5-54, 1-5-55, 1-5-56, 1-5-57, 1-5-58, 1-5-59, 1-5-60, 1-5-61, 1-5-62, 1-5-63, 1-5-64, 1-5-65, 1-5-66, 1-5-67, 1-5-68, 1-5-69, 1-5-70, 1-5-71, 1-5-72, 1-5-73, 1-5-74, 1-5-75, 1-5-76, 1-5-77, 1-5-78, 1-5-79, 1-5-80, 1-5-81, 1-5-82, 1-5-83, 1-5-84, 1-5-85, 1-5-86, 1-5-87, 1-5-88, 1-5-89, 1-5-90, 1-5-91, 1-5-92, 1-5-93, 1-5-94, 1-5-95, 1-5-96, 1-5-97, 1-5-98, 1-5-99, 1-6-00, 1-6-01, 1-6-02, 1-6-03, 1-6-04, 1-6-05, 1-6-06, 1-6-07, 1-6-08, 1-6-09, 1-6-10, 1-6-11, 1-6-12, 1-6-13, 1-6-14, 1-6-15, 1-6-16, 1-6-17, 1-6-18, 1-6-19, 1-6-20, 1-6-21, 1-6-22, 1-6-23, 1-6-24, 1-6-25, 1-6-26, 1-6-27, 1-6-28, 1-6-29, 1-6-30, 1-6-31, 1-6-32, 1-6-33, 1-6-34, 1-6-35, 1-6-36, 1-6-37, 1-6-38, 1-6-39, 1-6-40, 1-6-41, 1-6-42, 1-6-43, 1-6-44, 1-6-45, 1-6-46, 1-6-47, 1-6-48, 1-6-49, 1-6-50, 1-6-51, 1-6-52, 1-6-53, 1-6-54, 1-6-55, 1-6-56, 1-6-57, 1-6-58, 1-6-59, 1-6-60, 1-6-61, 1-6-62, 1-6-63, 1-6-64, 1-6-65, 1-6-66, 1-6-67, 1-6-68, 1-6-69, 1-6-70, 1-6-71, 1-6-72, 1-6-73, 1-6-74, 1-6-75, 1-6-76, 1-6-77, 1-6-78, 1-6-79, 1-6-80, 1-6-81, 1-6-82, 1-6-83, 1-6-84, 1-6-85, 1-6-86, 1-6-87, 1-6-88, 1-6-89, 1-6-90, 1-6-91, 1-6-92, 1-6-93, 1-6-94, 1-6-95, 1-6-96, 1-6-97, 1-6-98, 1-6-99, 1-7-00, 1-7-01, 1-7-02, 1-7-03, 1-7-04, 1-7-05, 1-7-06, 1-7-07, 1-7-08, 1-7-09, 1-7-10, 1-7-11, 1-7-12, 1-7-13, 1-7-14, 1-7-15, 1-7-16, 1-7-17, 1-7-18, 1-7-19, 1-7-20, 1-7-21, 1-7-22, 1-7-23, 1-7-24, 1-7-25, 1-7-26, 1-7-27, 1-7-28, 1-7-29, 1-7-30, 1-7-31, 1-7-32, 1-7-33, 1-7-34, 1-7-35, 1-7-36, 1-7-37, 1-7-38, 1-7-39, 1-7-40, 1-7-41, 1-7-42, 1-7-43, 1-7-44, 1-7-45, 1-7-46, 1-7-47, 1-7-48, 1-7-49, 1-7-50, 1-7-51, 1-7-52, 1-7-53, 1-7-54, 1-7-55, 1-7-56, 1-7-57, 1-7-58, 1-7-59, 1-7-60, 1-7-61, 1-7-62, 1-7-63, 1-7-64, 1-7-65, 1-7-66, 1-7-67, 1-7-68, 1-7-69, 1-7-70, 1-7-71, 1-7-72, 1-7-73, 1-7-74, 1-7-75, 1-7-76, 1-7-77, 1-7-78, 1-7-79, 1-7-80, 1-7-81, 1-7-82, 1-7-83, 1-7-84, 1-7-85, 1-7-86, 1-7-87, 1-7-88, 1-7-89, 1-7-90, 1-7-91, 1-7-92, 1-7-93, 1-7-94, 1-7-95, 1-7-96, 1-7-97, 1-7-98, 1-7-99, 1-8-00, 1-8-01, 1-8-02, 1-8-03, 1-8-04, 1-8-05, 1-8-06, 1-8-07, 1-8-08, 1-8-09, 1-8-10, 1-8-11, 1-8-12, 1-8-13, 1-8-14, 1-8-15, 1-8-16, 1-8-17, 1-8-18, 1-8-19, 1-8-20, 1-8-21, 1-8-22, 1-8-23, 1-8-24, 1-8-25, 1-8-26, 1-8-27, 1-8-28, 1-8-29, 1-8-30, 1-8-31, 1-8-32, 1-8-33, 1-8-34, 1-8-35, 1-8-36, 1-8-37, 1-8-38, 1-8-39, 1-8-40, 1-8-41, 1-8-42, 1-8-43, 1-8-44, 1-8-45, 1-8-46, 1-8-47, 1-8-48, 1-8-49, 1-8-50, 1-8-51, 1-8-52, 1-8-53, 1-8-54, 1-8-55, 1-8-56, 1-8-57, 1-8-58, 1-8-59, 1-8-60, 1-8-61, 1-8-62, 1-8-63, 1-8-64, 1-8-65, 1-8-66, 1-8-67, 1-8-68, 1-8-69, 1-8-70, 1-8-71, 1-8-72, 1-8-73, 1-8-74, 1-8-75, 1-8-76, 1-8-77, 1-8-78, 1-8-79, 1-8-80, 1-8-81, 1-8-82, 1-8-83, 1-8-84, 1-8-85, 1-8-86, 1-8-87, 1-8-88, 1-8-89, 1-8-90, 1-8-91, 1-8-92, 1-8-93, 1-8-94, 1-8-95, 1-8-96, 1-8-97, 1-8-98, 1-8-99, 1-9-00, 1-9-01, 1-9-02, 1-9-03, 1-9-04, 1-9-05, 1-9-06, 1-9-07, 1-9-08, 1-9-09, 1-9-10, 1-9-11, 1-9-12, 1-9-13, 1-9-14, 1-9-15, 1-9-16, 1-9-17, 1-9-18, 1-9-19, 1-9-20, 1-9-21, 1-9-22, 1-9-23, 1-9-24, 1-9-25, 1-9-26, 1-9-27, 1-9-28, 1-9-29, 1-9-30, 1-9-31, 1-9-32, 1-9-33, 1-9-34, 1-9-35, 1-9-36, 1-9-37, 1-9-38, 1-9-39, 1-9-40, 1-9-41, 1-9-42, 1-9-43, 1-9-44, 1-9-45, 1-9-46, 1-9-47, 1-9-48, 1-9-49, 1-9-50, 1-9-51, 1-9-52, 1-9-53, 1-9-54, 1-9-55, 1-9-56, 1-9-57, 1-9-58, 1-9-59, 1-9-60, 1-9-61, 1-9-62, 1-9-63, 1-9-64, 1-9-65, 1-9-66, 1-9-67, 1-9-68, 1-9-69, 1-9-70, 1-9-71, 1-9-72, 1-9-73, 1-9-74, 1-9-75, 1-9-76, 1-9-77, 1-9-78, 1-9-79, 1-9-80, 1-9-81, 1-9-82, 1-9-83, 1-9-84, 1-9-85, 1-9-86, 1-9-87, 1-9-88, 1-9-89, 1-9-90, 1-9-91, 1-9-92, 1-9-93, 1-9-94, 1-9-95, 1-9-96, 1-9-97, 1-9-98, 1-9-99, 1-10-00, 1-10-01, 1-10-02, 1-10-03, 1-10-04, 1-10-05, 1-10-06, 1-10-07, 1-10-08, 1-10-09, 1-10-10, 1-10-11, 1-10-12, 1-10-13, 1-10-14, 1-10-15, 1-10-16, 1-10-17, 1-10-18, 1-10-19, 1-10-20, 1-10-21, 1-10-22, 1-10-23, 1-10-24, 1-10-25, 1-10-26, 1-10-27, 1-10-28, 1-10-29, 1-10-30, 1-10-31, 1-10-32, 1-10-33, 1-10-34, 1-10-35, 1-10-36, 1-10-37, 1-10-38, 1-10-39, 1-10-40, 1-10-41, 1-10-42, 1-10-43, 1-10-44, 1-10-45, 1-10-46, 1-10-47, 1-10-48, 1-10-49, 1-10-50, 1-10-51, 1-10-52, 1-10-53, 1-10-54, 1-10-55, 1-10-56, 1-10-57, 1-10-58, 1-10-59, 1-10-60, 1-10-61, 1-10-62, 1-10-63, 1-10-64, 1-10-65, 1-10-66, 1-10-67, 1-10-68, 1-10-69, 1-10-70, 1-10-71, 1-10-72, 1-10-73, 1-10-74, 1-10-75, 1-10-76, 1-10-77, 1-10-78, 1-10-79, 1-10-80, 1-10-81, 1-10-82, 1-10-83, 1-10-84, 1-10-85, 1-10-86, 1-10-87, 1-10-88, 1-10-89, 1-10-90, 1-10-91, 1-10-92, 1-10-93, 1-10-94, 1-10-95, 1-10-96, 1-10-97, 1-10-98, 1-10-99, 1-11-00, 1-11-01, 1-11-02, 1-11-03, 1-11-04, 1-11-05, 1-11-06, 1-11-07, 1-11-08, 1-11-09, 1-11-10, 1-11-11, 1-11-12, 1-11-13, 1-11-14, 1-11-15, 1-11-16, 1-11-17, 1-11-18, 1-11-19, 1-11-20, 1-11-21, 1-11-22, 1-11-23, 1-11-24, 1-11-25, 1-11-26, 1-11-27, 1-11-28, 1-11-29, 1-11-30, 1-11-31, 1-11-32, 1-11-33, 1-11-34, 1-11-35, 1-11-36, 1-11-37, 1-11-38, 1-11-39, 1-11-40, 1-11-41, 1-11-42, 1-11-43, 1-11-44, 1-11-45, 1-11-46, 1-11-47, 1-11-48, 1-11-49, 1-11-50, 1-11-51, 1-11-52, 1-11-53, 1-11-54, 1-11-55, 1-11-56, 1-11-57, 1-11-58, 1-11-59, 1-11-60, 1-11-61, 1-11-62, 1-11-63, 1-11-64, 1-11-65, 1-11-66, 1-11-67, 1-11-68, 1-11-69, 1-11-70, 1-11-71, 1-11-72, 1-11-73, 1-11-74, 1-11-75, 1-11-76, 1-11-77, 1-11-78, 1-11-79, 1-11-80, 1-11-81, 1-11-82, 1-11-83, 1-11-84, 1-11-85, 1-11-86, 1-11-87, 1-11-88, 1-11-89, 1-11-90, 1-11-91, 1-11-92, 1-11-93, 1-11-94, 1-11-95, 1-11-96, 1-11-97, 1-11-98, 1-11-99, 1-12-00, 1-12-01, 1-12-02, 1-12-03, 1-12-04, 1-12-05, 1-12-06, 1-12-07, 1-12-08, 1-12-09, 1-12-10, 1-12-11, 1-12-12, 1-12-13, 1-12-14, 1-12-15, 1-12-16, 1-12-17, 1-12-18, 1-12-19, 1-12-20, 1-12-21, 1-12-22, 1-12-23, 1-12-24, 1-12-25, 1-12-26, 1-12-27, 1-12-28, 1-12-29, 1-12-30, 1-12-31, 1-12-32, 1-12-33, 1-12-34, 1-12-35, 1-12-36, 1-12-37, 1-12-38, 1-12-39, 1-12-40, 1-12-41, 1-12-42, 1-12-43, 1-12-44, 1-12-45, 1-12-46, 1-12-47, 1-12-48, 1-12-49, 1-12-50, 1-12-51, 1-12-52, 1-12-53, 1-12-54, 1-12-55, 1-12-56, 1-12-57, 1-12-58, 1-12-59, 1-12-60, 1-12-61, 1-12-62, 1-12-63, 1-12-64, 1-12-65, 1-12-66, 1-12-67, 1-12-68, 1-12-69, 1-12-70, 1-12-71, 1-12-72, 1-12-73, 1-12-74, 1-12-75, 1-12-76, 1-12-77, 1-12-78, 1-12-79, 1-12-80, 1-12-81, 1-12-82, 1-12-83, 1-12-84, 1-12-85, 1-12-86, 1-12-87, 1-12-88, 1-12-89, 1-12-90, 1-12-91, 1-12-92, 1-12-93, 1-12-94, 1-12-95, 1-12-96, 1-12-97, 1-12-98, 1-12-99, 1-13-00, 1-13-01, 1-13-02, 1-13-03, 1-13-04, 1-13-05, 1-13-06, 1-13-07, 1-13-08, 1-13-09, 1-13-10, 1-13-11, 1-13-12, 1-13-13, 1-13-14, 1-13-15, 1-13-16, 1-13-17, 1-13-18, 1-13-19, 1-13-20, 1-13-21, 1-13-22, 1-13-23, 1-13-24, 1-13-25, 1-13-26, 1-13-27, 1-13-28, 1-13-29, 1-13-30, 1-13-31, 1-13-32, 1-13-33, 1-13-34, 1-13-35, 1-13-36, 1-13-37, 1-13-38, 1-13-39, 1-13-40, 1-13-41, 1-13-42, 1-13-43, 1-13-44, 1-13-45, 1-13-46, 1-13-47, 1-13-48, 1-13-49, 1-13-50, 1-13-51, 1-13-52, 1-13-53, 1-13-54, 1-13-55, 1-13-56, 1-13-57, 1-13-58, 1-13-59, 1-13-60, 1-13-61, 1-13-62, 1-13-63, 1-13-64, 1-13-65, 1-13-66, 1-13-67, 1-13-68, 1-13-69, 1-13-70, 1-13-71, 1-13-72, 1-13-73, 1-13-74, 1-13-75, 1-13-76, 1-13-77, 1-13-78, 1-13-79, 1-13-80, 1-13-81, 1-13-82, 1-13-83, 1-13-84, 1-13-85, 1-13-86, 1-13-87, 1-13-88, 1-13-89, 1-13-90, 1-13-91, 1-13-92, 1-13-93, 1-13-94, 1-13-95, 1-13-96, 1-13-97, 1-13-98, 1-13-99, 1-14-00, 1-14-01, 1-14-02, 1-14-03, 1-14-04, 1-14-05, 1-14-06, 1-14-07, 1-14-08, 1-14-09, 1-14-10, 1-14-11, 1-14-12, 1-14-13, 1-14-14, 1-14-15, 1-14-16, 1-14-17, 1-14-18, 1-14-19, 1-14-20, 1-14-21, 1-14-22, 1-14-23, 1-14-24, 1-14-25, 1-14-26, 1-14-27, 1-14-28, 1-14-29, 1-14-30, 1-14-31, 1-14-32, 1-14-33, 1-14-34, 1-14-35, 1-14-36, 1-14-37, 1-14-38, 1-14-39, 1-14-40, 1-14-41, 1-14-42, 1-14-43, 1-14-44, 1-14-45, 1-14-46, 1-14-47, 1-14-48, 1-14-49, 1-14-50, 1-14-51, 1-14-52, 1-14-53, 1-14-54, 1-14-55, 1-14-56, 1-14-57, 1-14-58, 1-14-59, 1-14-60, 1-14-61, 1-14-62, 1-14-63, 1-14-64, 1-14-65, 1-14-66, 1-14-67, 1-14-68, 1-14-69, 1-14-70, 1-14-71, 1-14-72, 1-14-73, 1-14-74, 1-14-75, 1-14-76, 1-14-77, 1-14-78, 1-14-79, 1-14-80, 1-14-81, 1-14-82, 1-14-83, 1-14-84, 1-14-85, 1-14-86, 1-14-87, 1-14-88, 1-14-89, 1-14-90, 1-14-91, 1-14-92, 1-14-93, 1-14-94, 1-14-95, 1-14-96, 1-14-97, 1-14-98, 1-14-99,

