




# COLORADO DIVISION OF RECLAMATION, MINING AND SAFETY COAL PROGRAM INSPECTION REPORT



## PERMIT INFORMATION

<b>Permit Number:</b> C-1981-046 <b>Mine Name:</b> Sunlight Mine <b>Operator:</b> Garfield Energy Corporation <b>Operator Address:</b>  X X, CO 11111	<b>County:</b> Garfield <b>Operation Type:</b> Underground <b>Permit Status:</b> Revoked <b>Ownership:</b> Private  <b>Operator Representative Present:</b>  None
<b>Operator Representative Signature:</b> (Field Issuance Only)	

## INSPECTION INFORMATION

<b>Inspection Start Date:</b> September 25, 2013 <b>Inspection Start Time:</b> 11:06 <b>Inspection End Date:</b> September 25, 2013 <b>Inspection End Time:</b> 11:06		<b>Inspection Type:</b> Aerial Inspection <b>Inspection Reason:</b> Normal I&E Program <b>Weather:</b> Clear	
<b>Joint Inspection Agency:</b>  None		<b>Joint Inspection Contacts:</b>	
<b>Post Inspection Agency:</b>  None		<b>Post Inspection Contacts:</b>	
<b>Inspector(s):</b>  Brock F. Bowles  Harry B. Ranney		<b>Inspector's Signature:</b>    <b>Signature Date:</b>  September 30, 2013	

**Inspection Topic Summary**

NOTE: Y=Inspected N=Not Inspected R=Comments Noted V=Violation Issued NA=Not Applicable

N - Air Resource Protection	N - Roads
N - Availability of Records	N - Reclamation Success
R - Backfill & Grading	N - Revegetation
N - Excess Spoil and Dev. Waste	N - Subsidence
N - Explosives	N - Slides and Other Damage
N - Fish & Wildlife	N - Support Facilities On-site
N - Hydrologic Balance	N - Signs and Markers
N - Gen. Compliance With Mine Plan	N - Support Facilities Not On-site
N - Other	N - Special Categories Of Mining
N - Processing Waste	N - Topsoil

**COMMENTS**

This was an aerial inspection of the Sunlight Mine conducted by Brock Bowles and Harry Ranney of the Colorado Division of Reclamation, Mining and Safety on September 25, 2013. The permit for this mine was revoked and the bond was forfeited. The reclamation was completed by the Division. Weather conditions for the aerial inspection were sunny. The purpose of this inspection was to document the condition of the lower portal area which was excavated and backfilled on September 9, 2013.

BACKFILL and GRADING – Rule 4.14 □ Contemporaneous Reclamation 4.14.1; Approximate Original Contour 4.14.2; Highwall Elimination 4.14.1(2)(f); Steep Slopes 4.14.2, 4.27; Handling of Acid and Toxic Materials 4.14.3; Stabilization of Rills and Gullies 4.14.6:

It appears that the lower portal area that was excavated and backfilled on September 9, 2013 is stable. The backfilled area was left rough with small hills and depressions for revegetation. These hills and depressions are visible in aerial photo 1.

The upper portal area and bench area appear to be stable (photo 2).

Number of Partial Inspection this Fiscal Year: 2

Number of Complete Inspections this Fiscal Year: 2

## PHOTOGRAPHS



Photo 1 – The Excavated Lower Portal Area

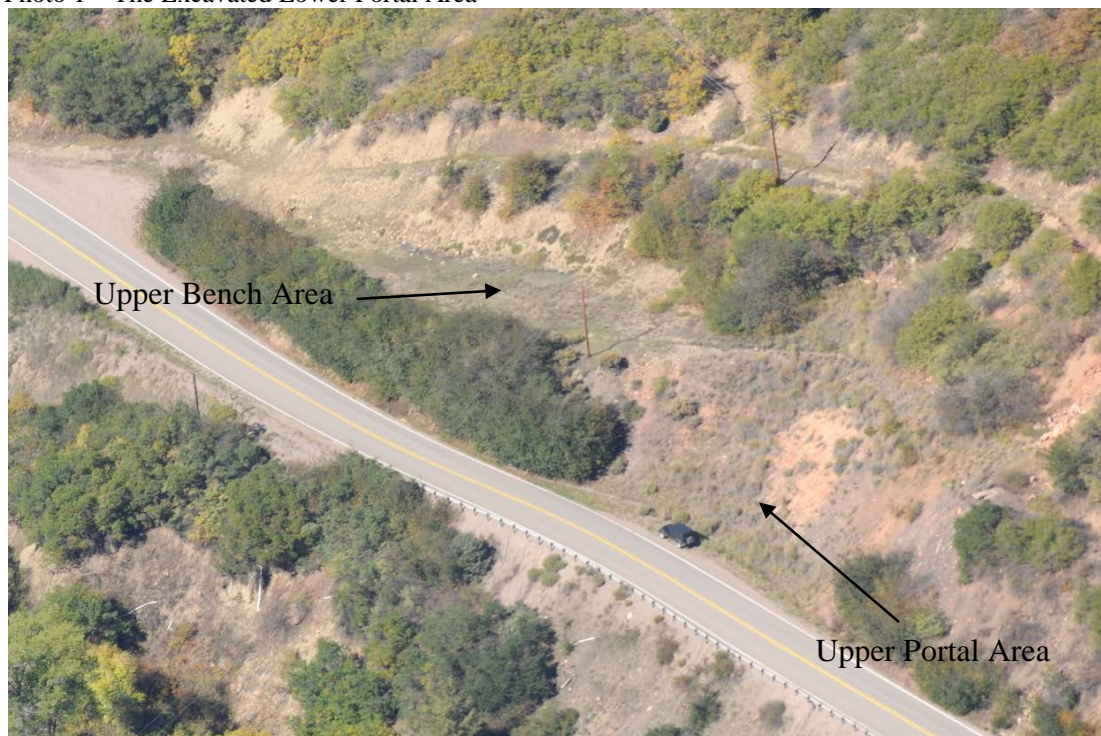


Photo 2- The Upper Portal Area and Bench

Number of Partial Inspection this Fiscal Year: 2

Number of Complete Inspections this Fiscal Year: 2