



United States Department of Agriculture

Colorado Snow Surveys

# Water Conditions Monitoring Committee Meeting January 22<sup>nd</sup>, 2026

## NRCS Snow Survey and Water Supply Forecasting Program

Brian Domonkos

Hydrologist

Brian.Domonkos@usda.gov

720-544-2853

<https://www.nrcs.usda.gov/colorado/snow-survey>

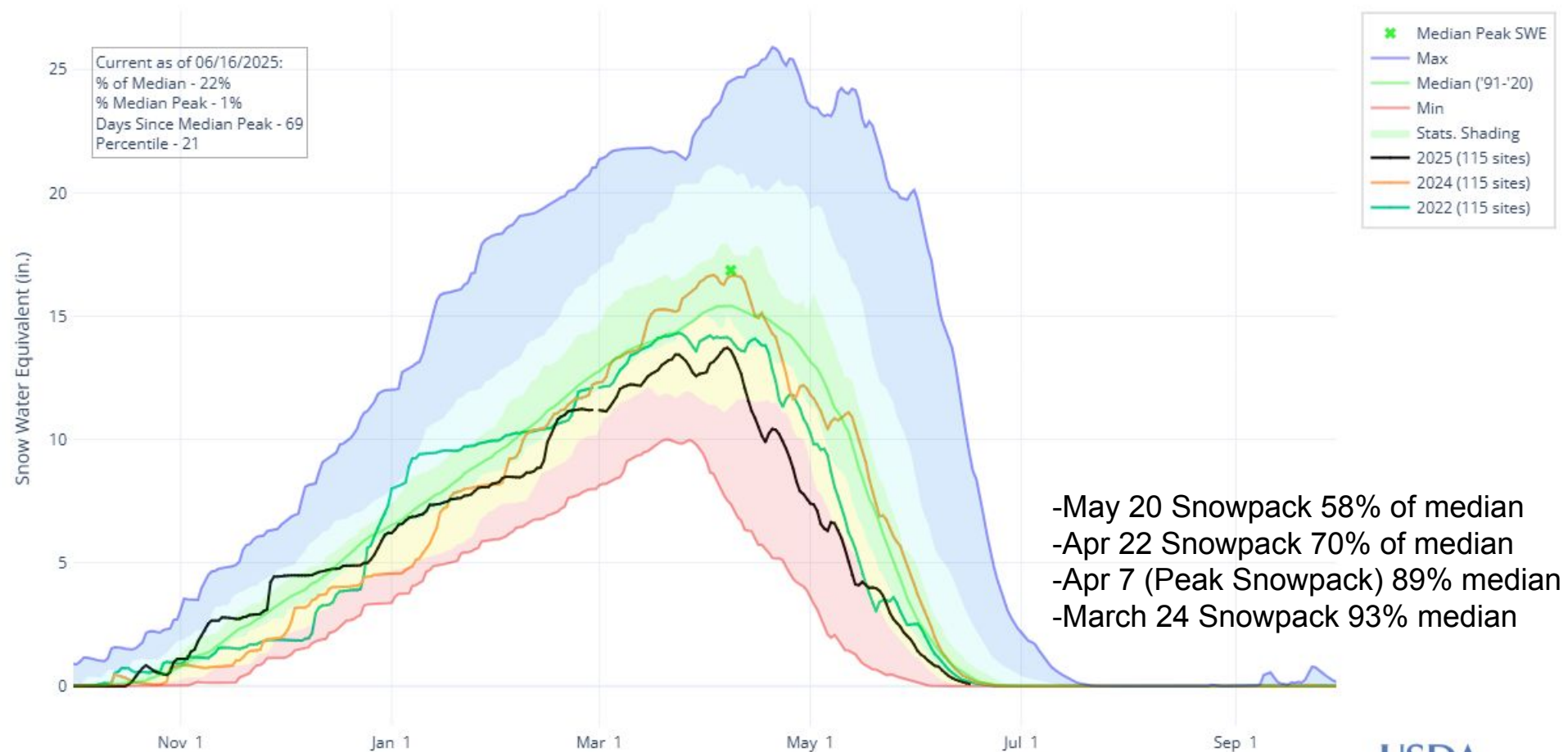


United States Department of Agriculture

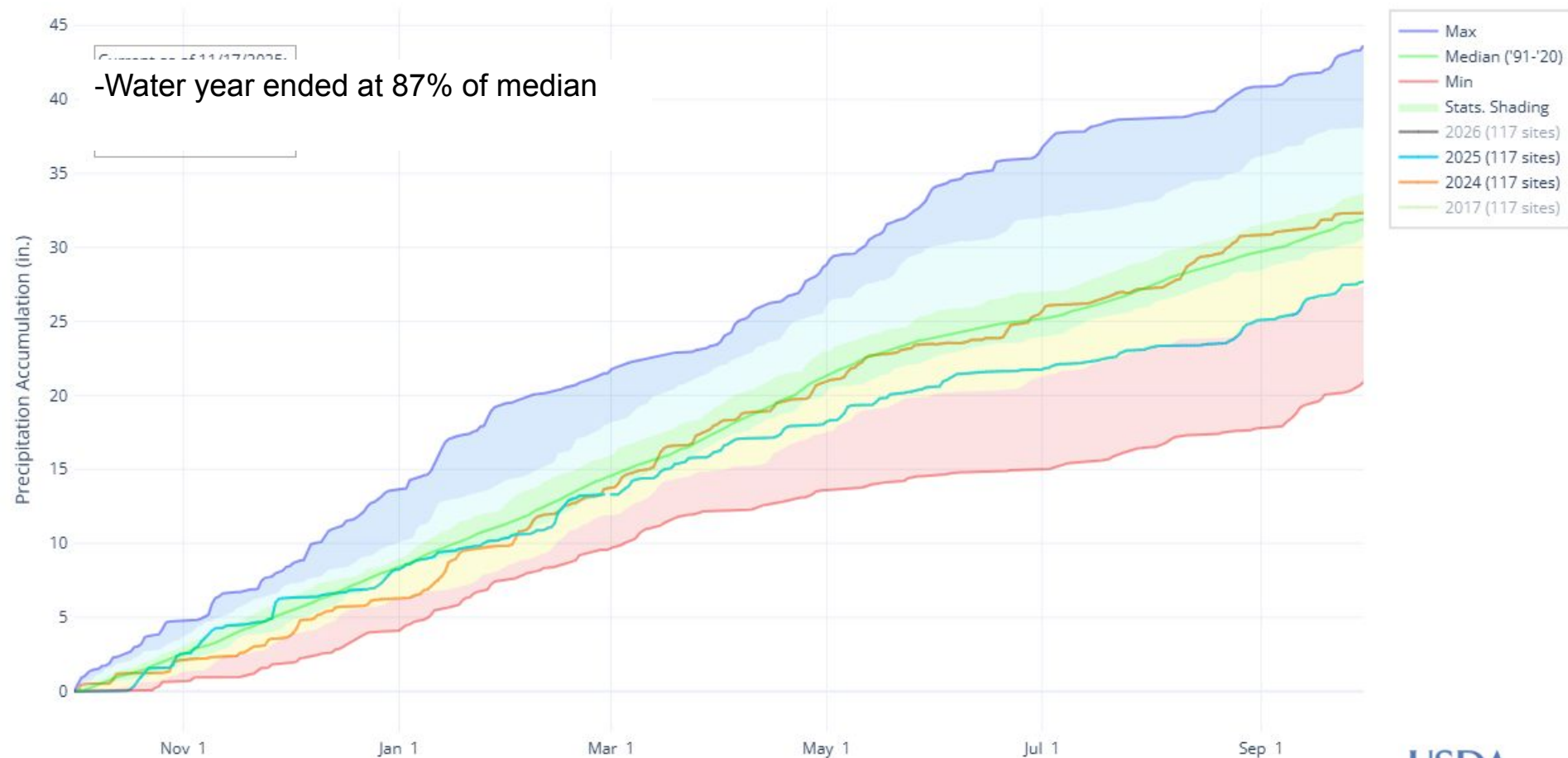
# Colorado Snow Surveys

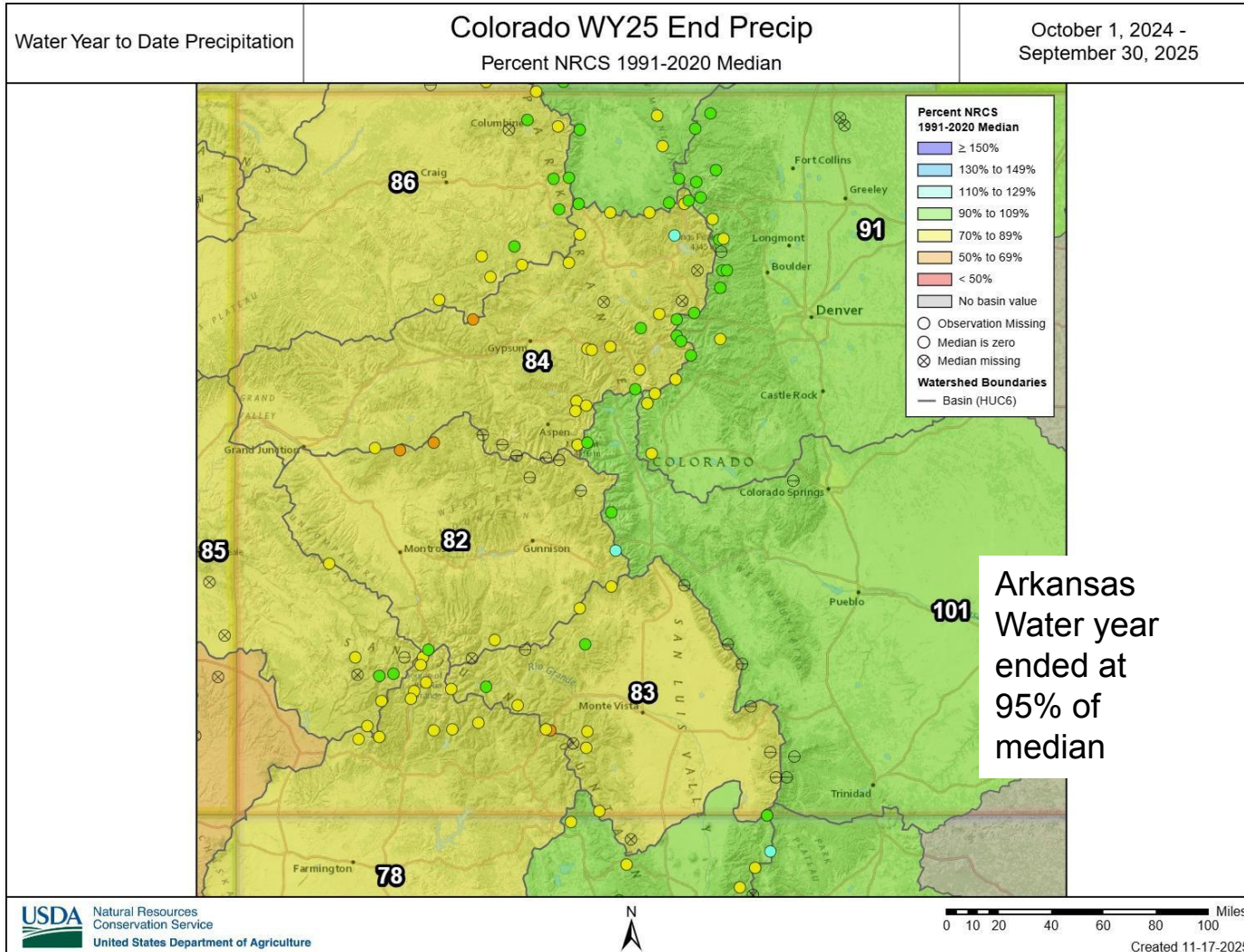
## Water Year 2025 Wrap-up

## SNOW WATER EQUIVALENT IN STATE OF COLORADO



## PRECIPITATION ACCUMULATION IN STATE OF COLORADO







United States Department of Agriculture

# Colorado Snow Surveys

## Snowpack

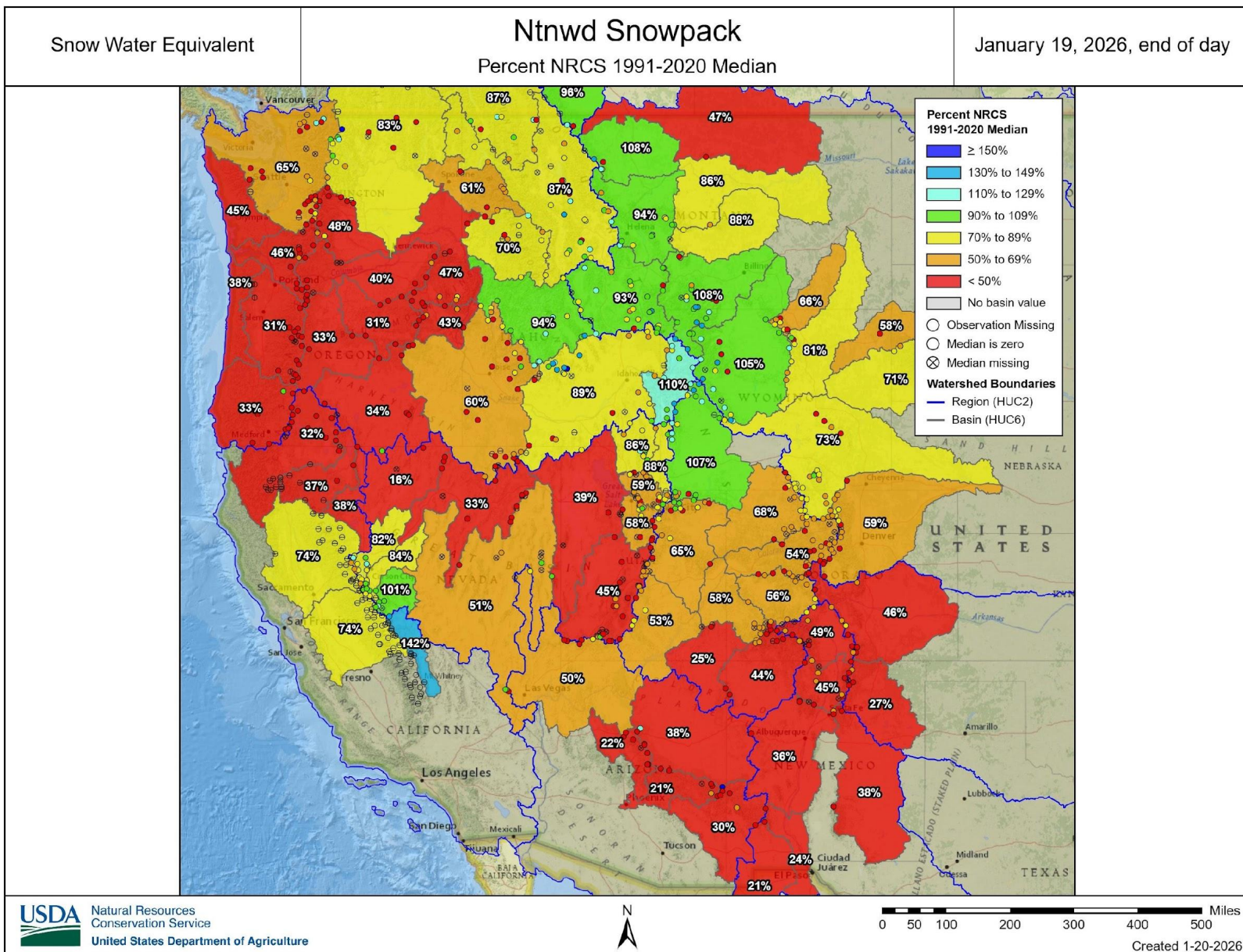




United States Department of Agriculture

# Colorado Snow Surveys

## Nationwide Snowpack

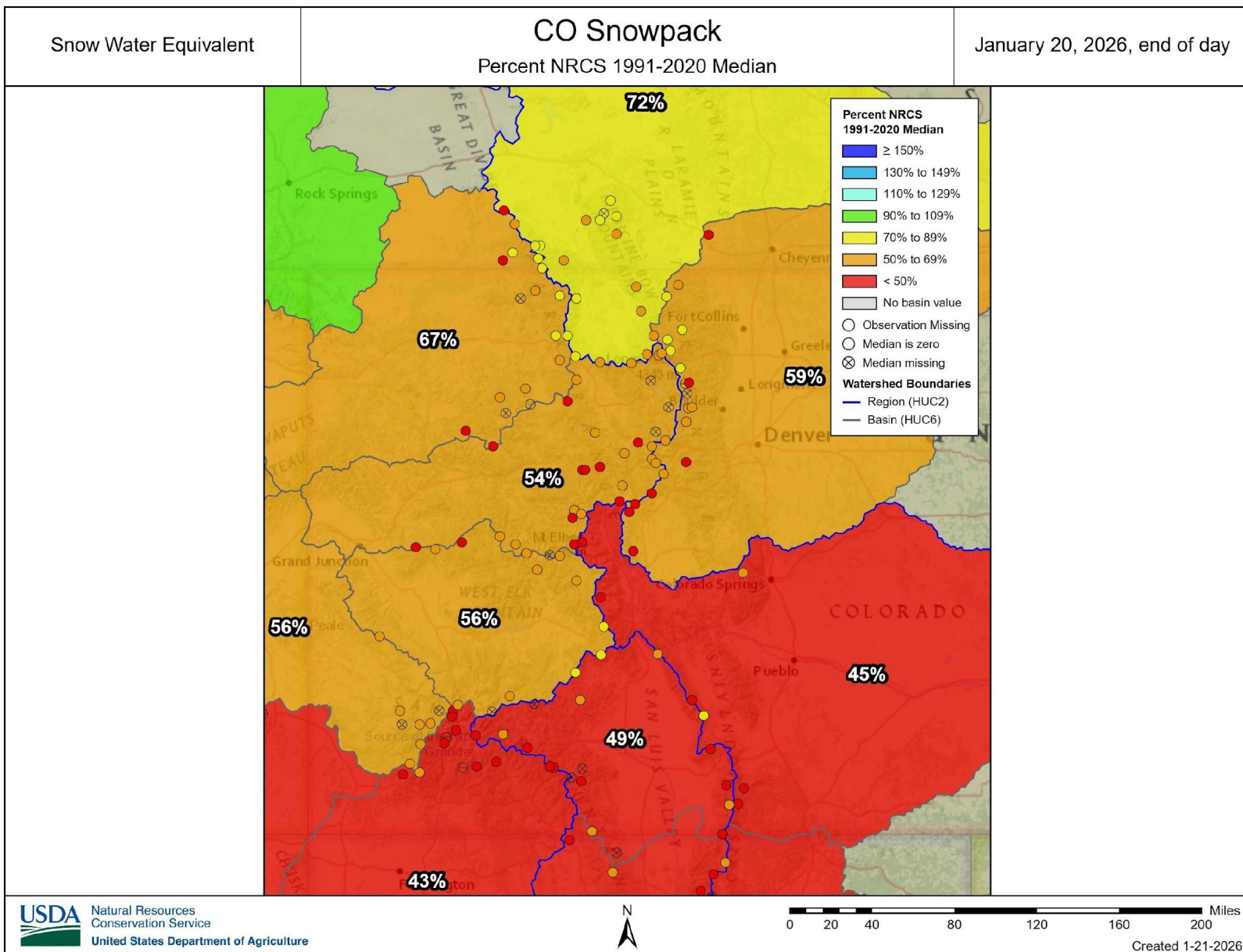




United States Department of Agriculture

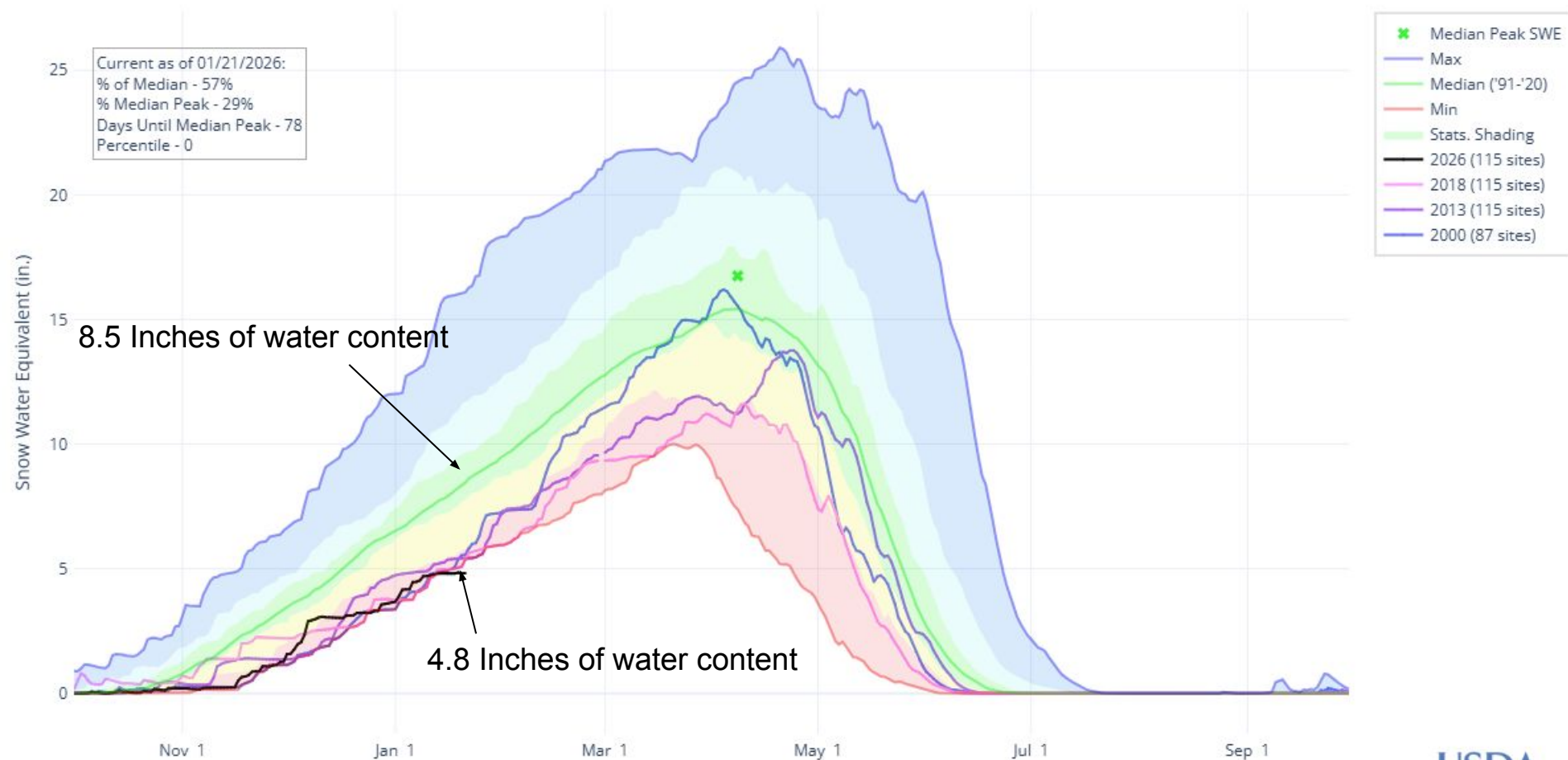
# Colorado Snow Surveys

## Colorado Snowpack

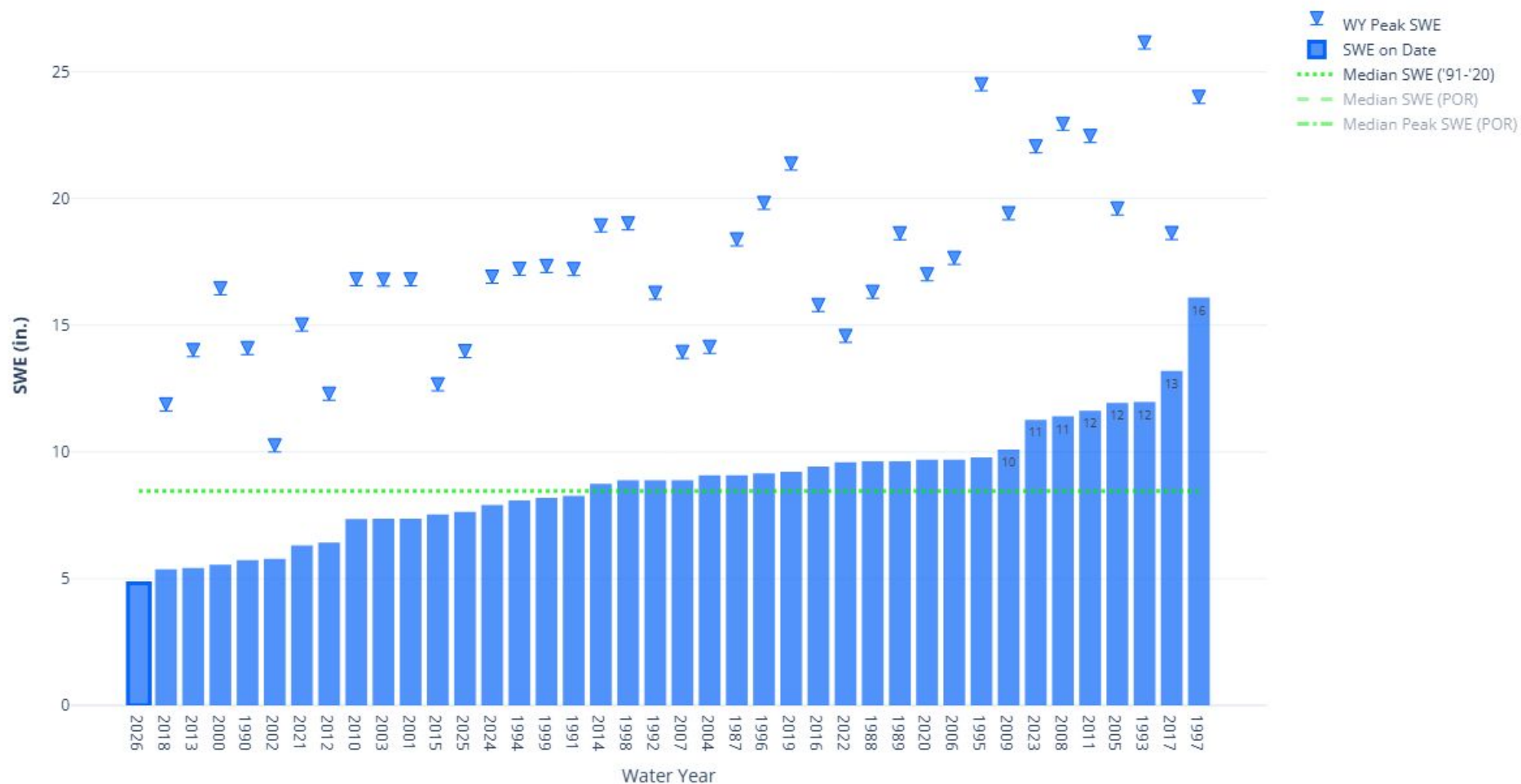




## SNOW WATER EQUIVALENT IN STATE OF COLORADO

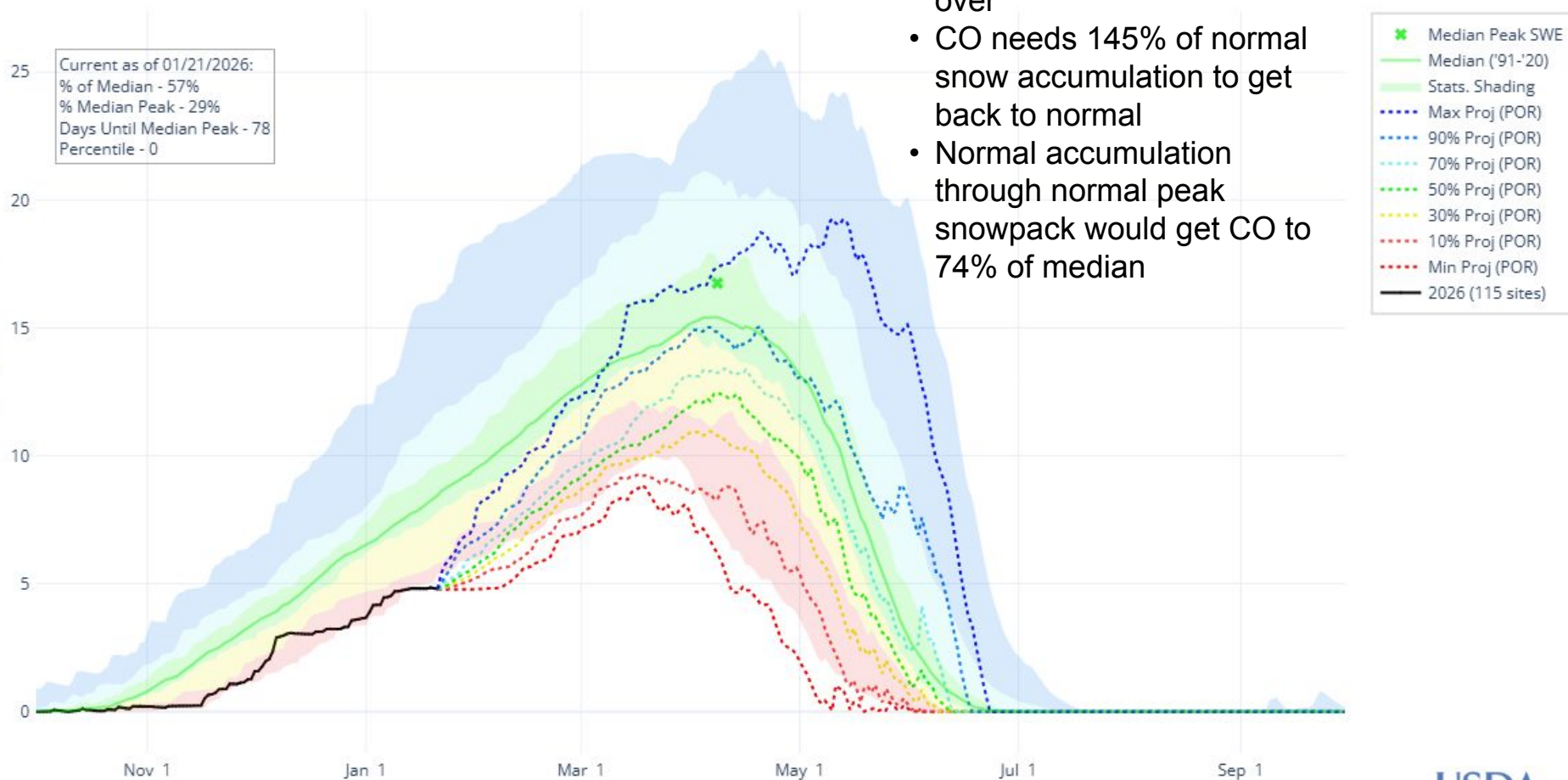


## STATE OF COLORADO JANUARY 21 SWE COMPARISON



# Colorado Snow Surveys

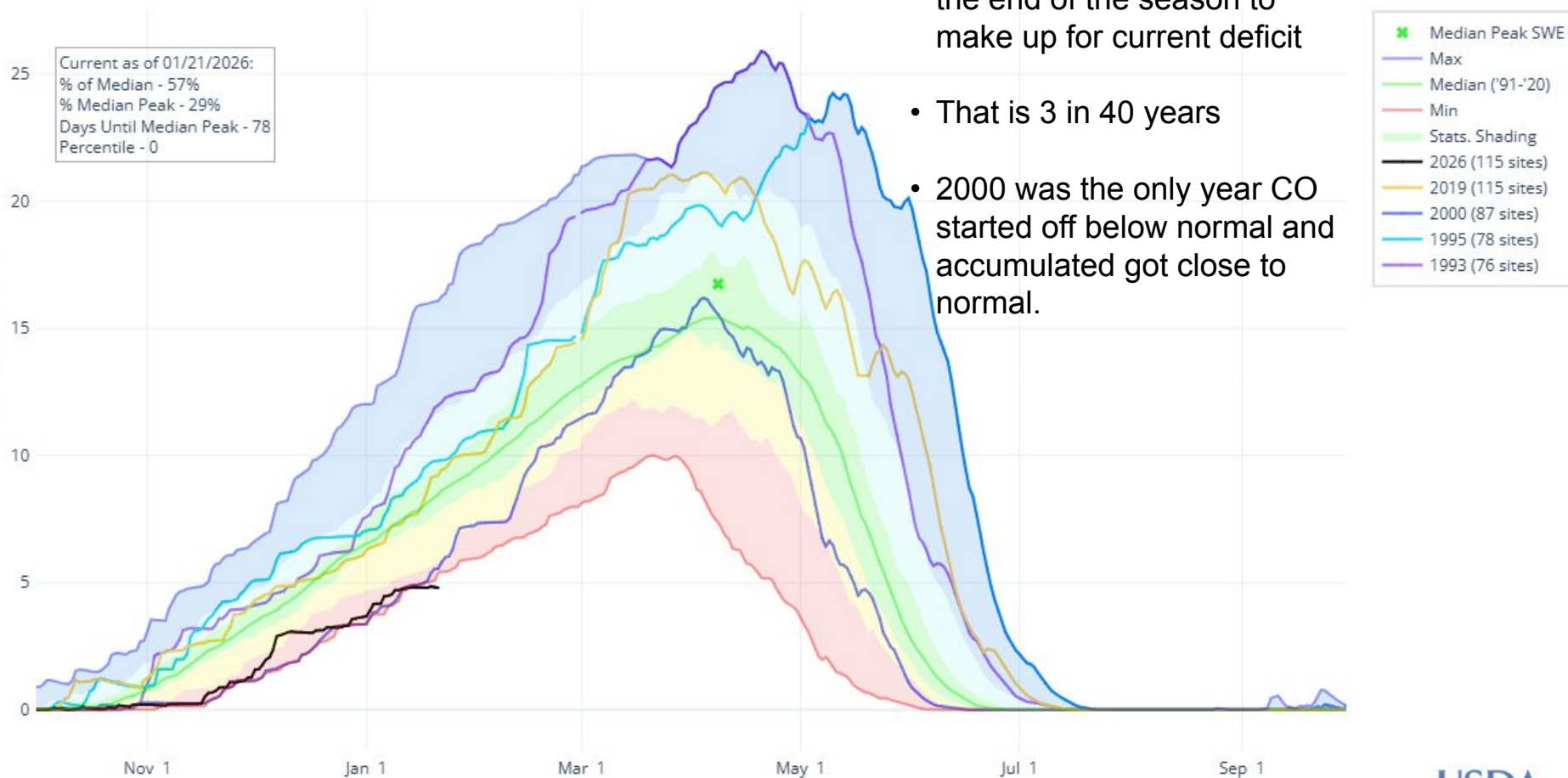
SNOW WATER EQUIVALENT PROJECTION IN STATE OF COLORADO



- Winter is 51% complete. In other words, winter is half over
- CO needs 145% of normal snow accumulation to get back to normal
- Normal accumulation through normal peak snowpack would get CO to 74% of median

## Analog Years

SNOW WATER EQUIVALENT IN STATE OF COLORADO



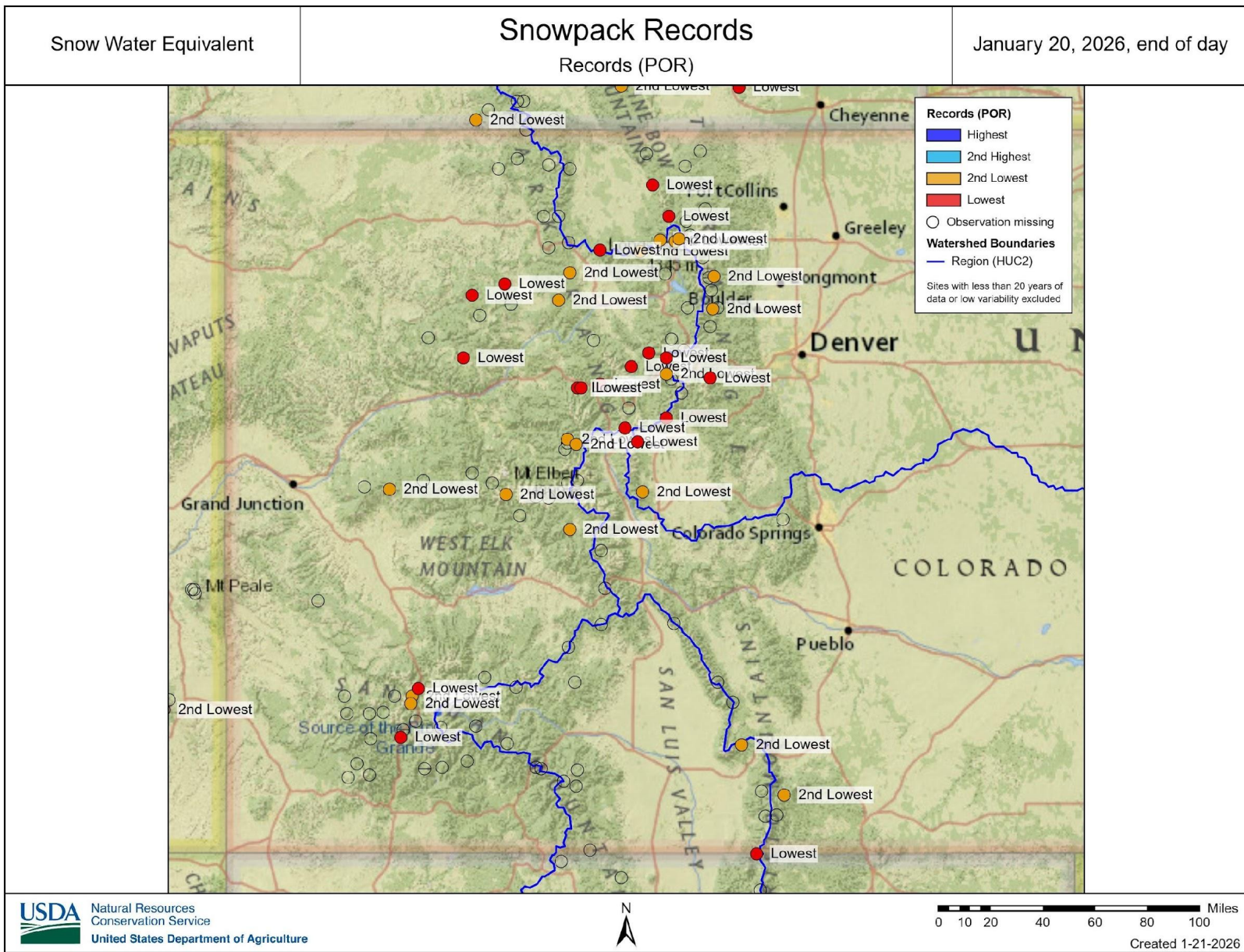




United States Department of Agriculture

# Colorado Snow Surveys

## Colorado Snowpack Records



SNOWPACK BY ELEVATION IN STATE OF COLORADO JANUARY 22, 2026

[Link to data: CSV / JSON](#)

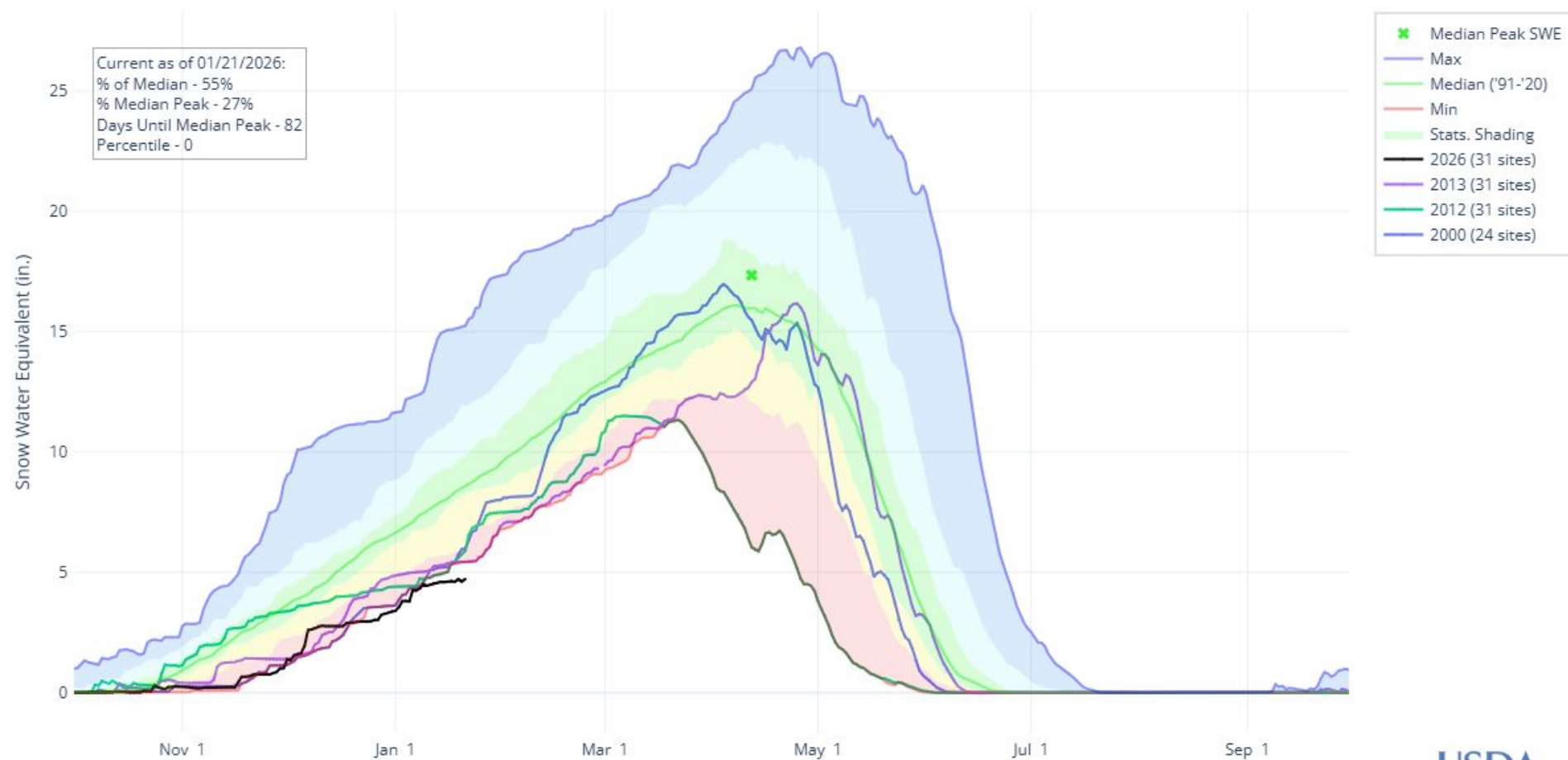


SNOWPACK BY ELEVATION IN SOUTH PLATTE JANUARY 22, 2026

[Link to data: CSV / JSON](#)



## SNOW WATER EQUIVALENT IN COLORADO HEADWATERS

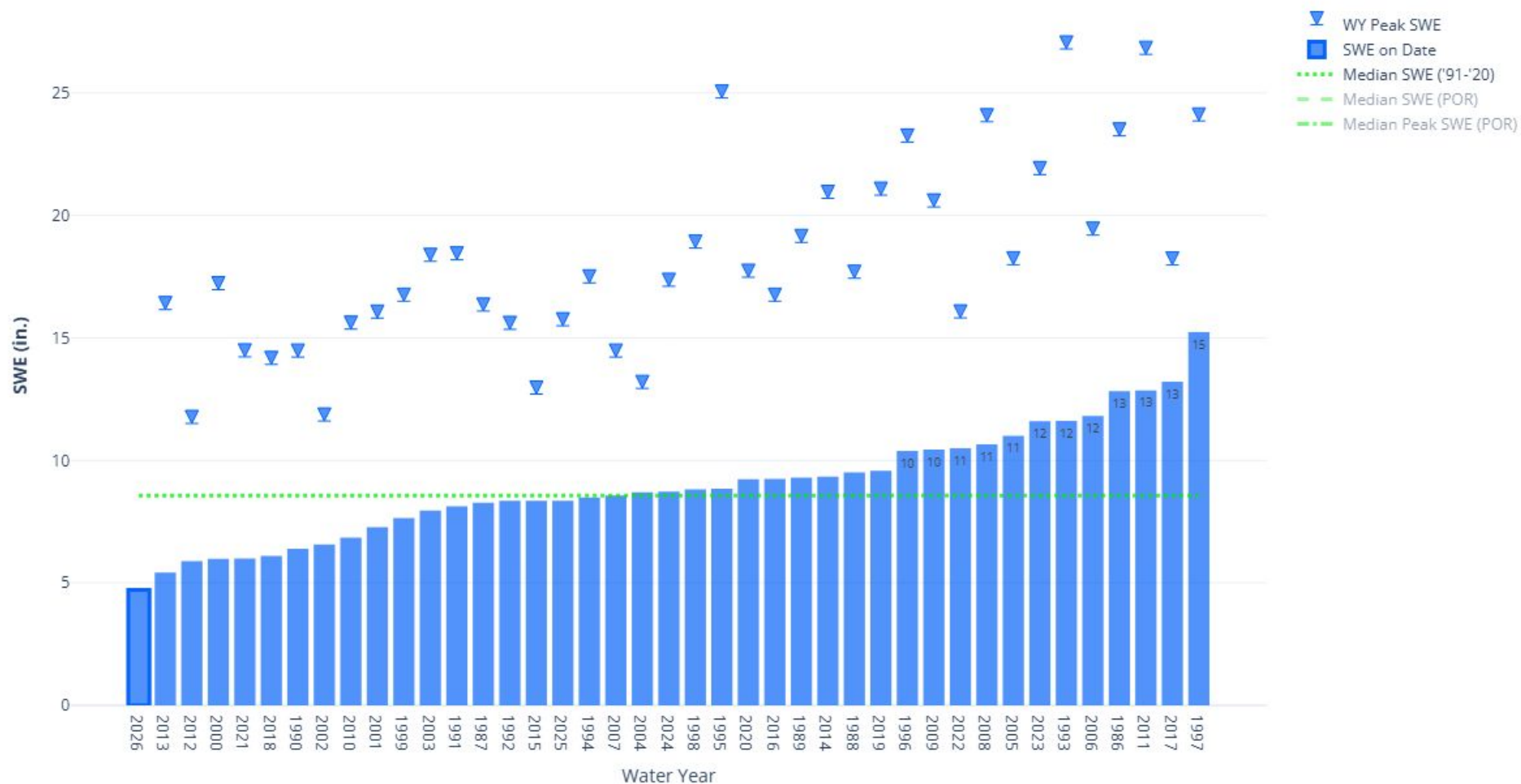




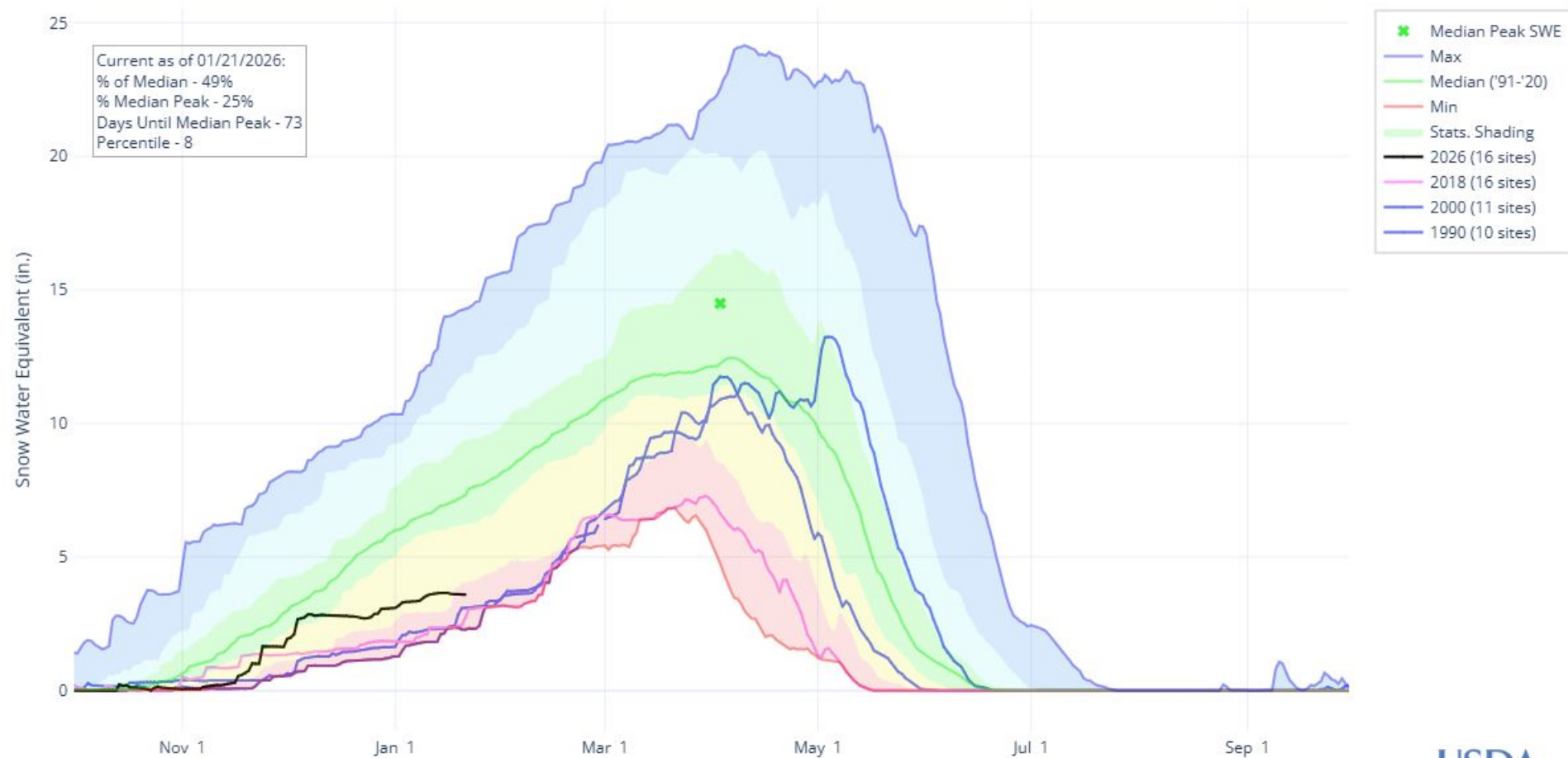


# Colorado Snow Surveys

## COLORADO HEADWATERS JANUARY 21 SWE COMPARISON



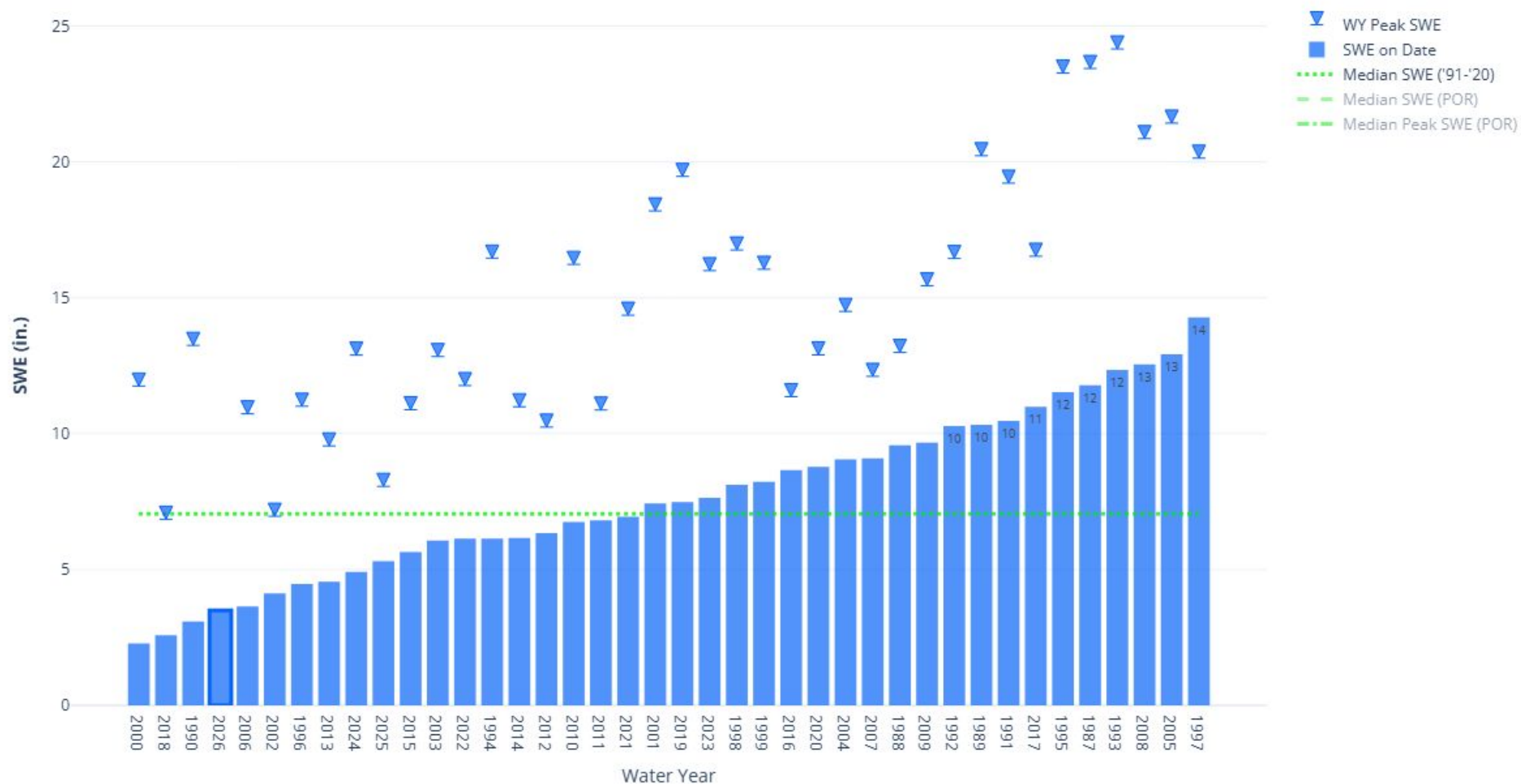
## SNOW WATER EQUIVALENT IN RIO GRANDE HEADWATERS





# Colorado Snow Surveys

## UPPER RIO GRANDE JANUARY 21 SWE COMPARISON





United States Department of Agriculture

# Colorado Snow Surveys

## Precipitation

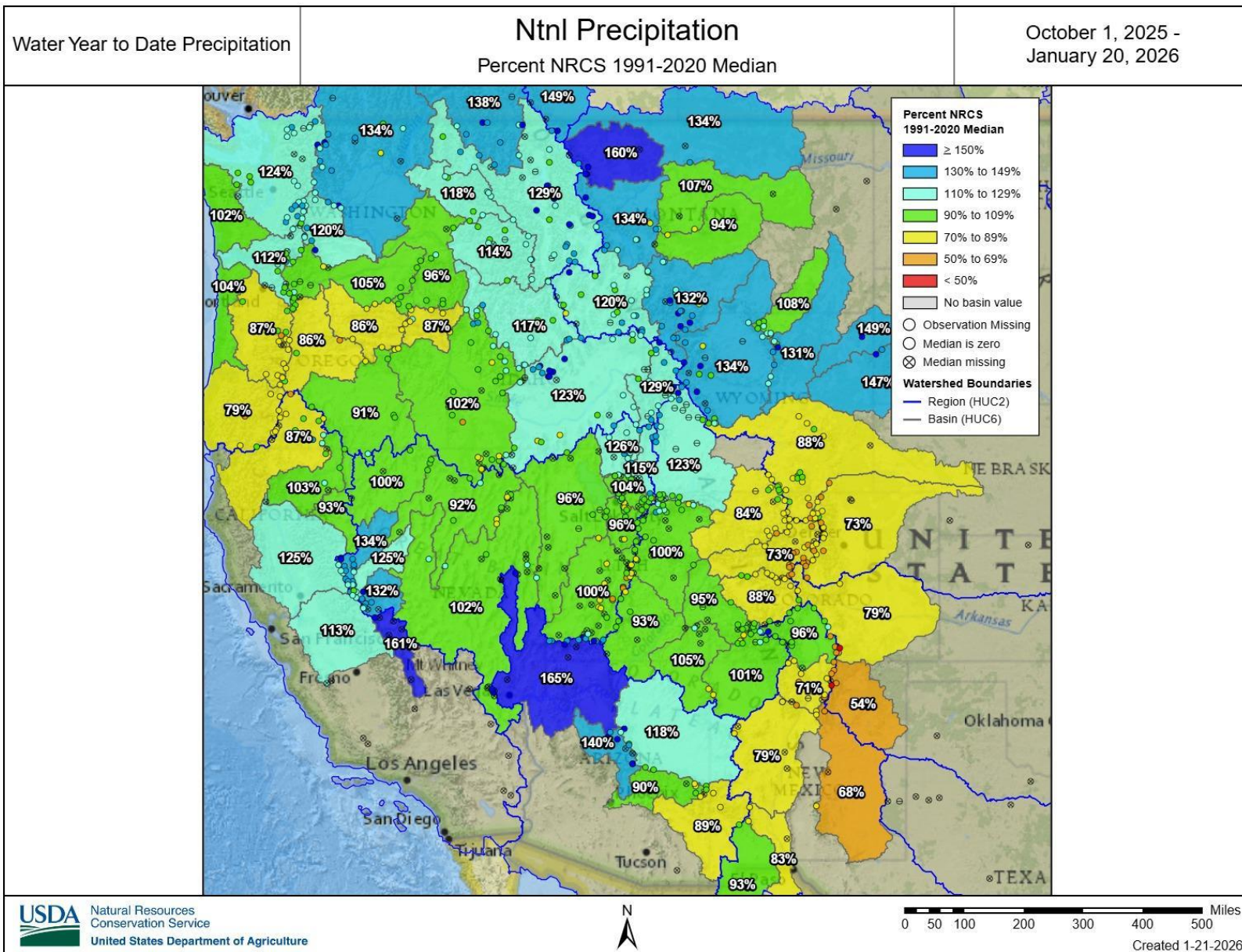




United States Department of Agriculture

# Colorado Snow Surveys

## Nationwide WYTD Precip

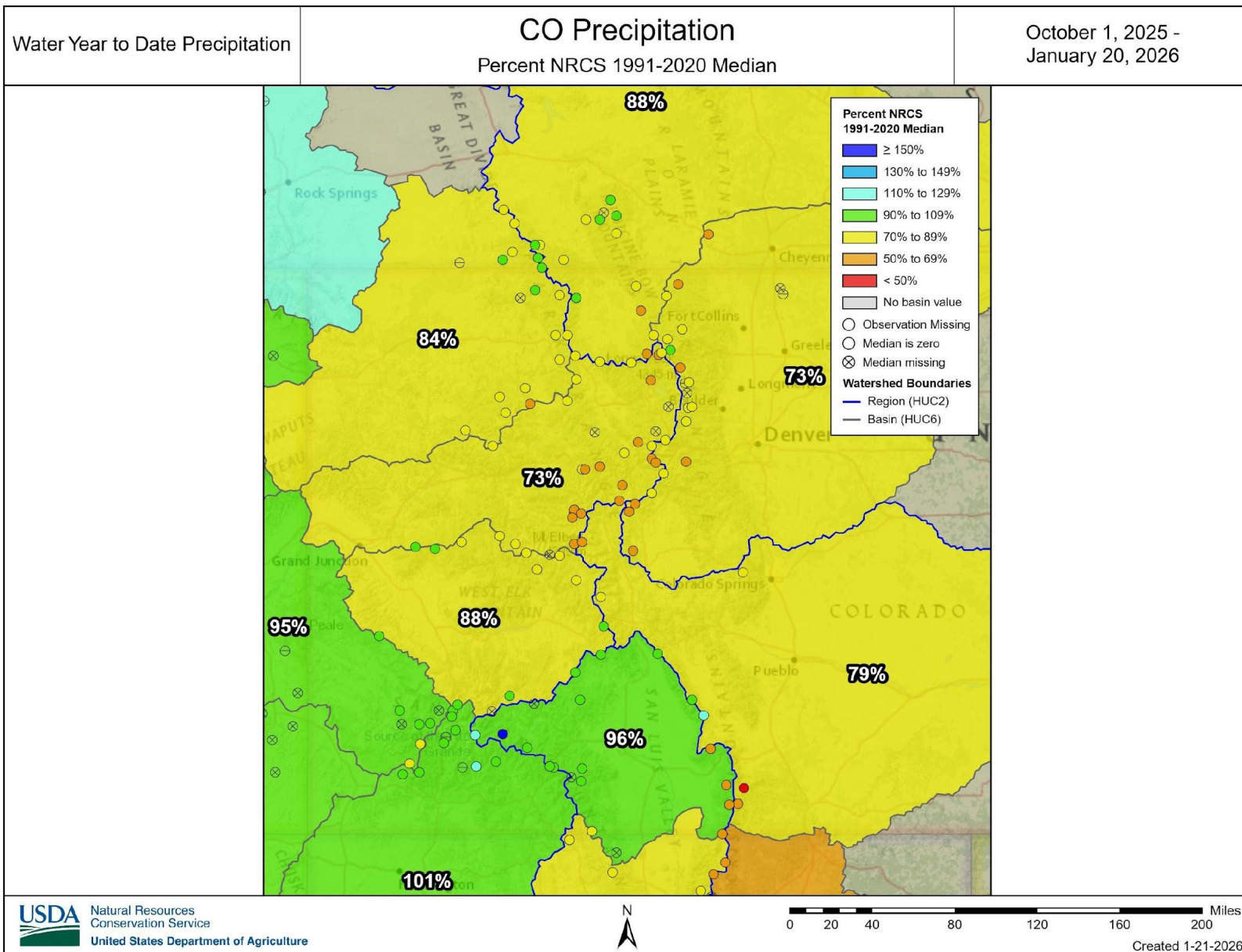




United States Department of Agriculture

# Colorado Snow Surveys

## Colorado WYTD Precip



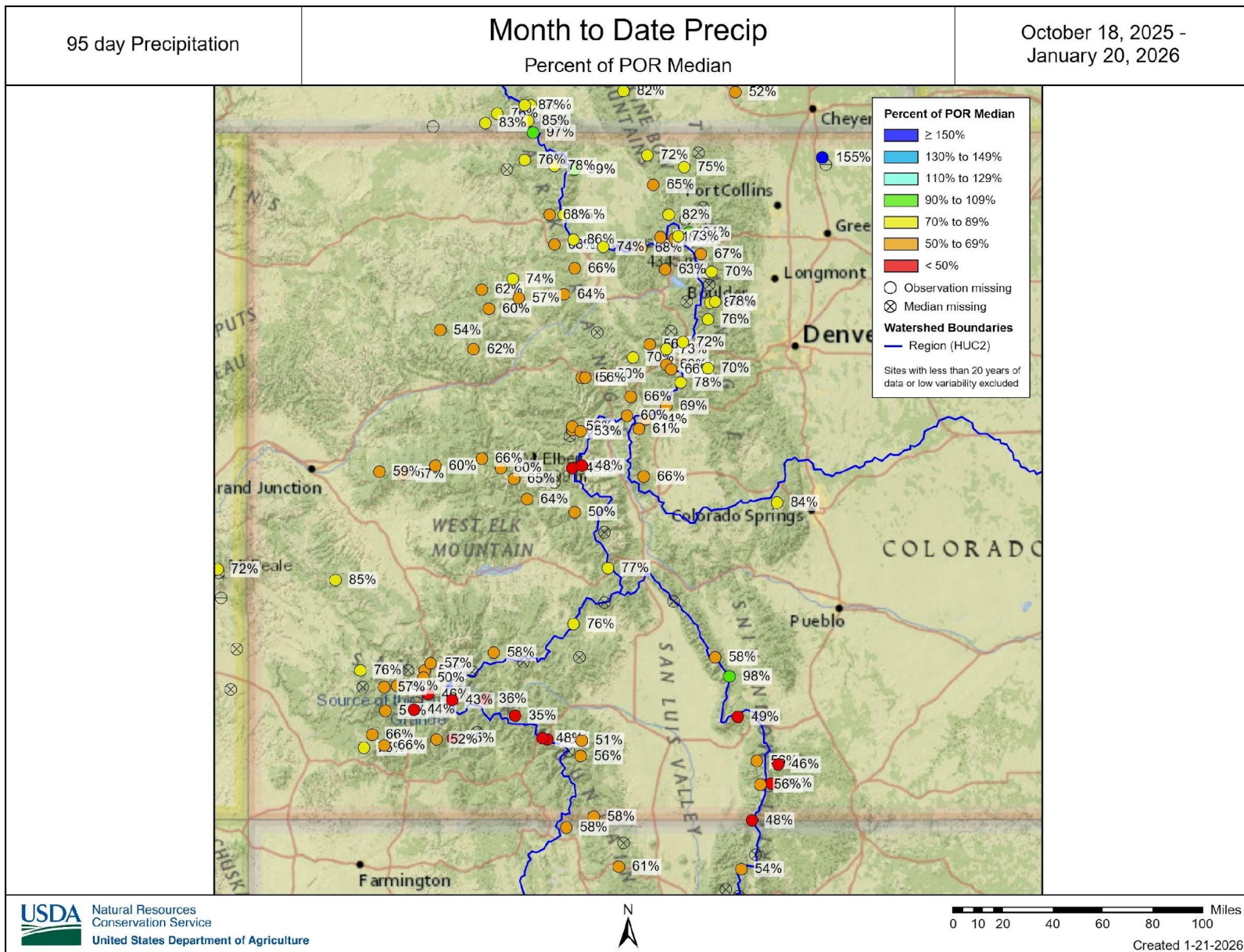




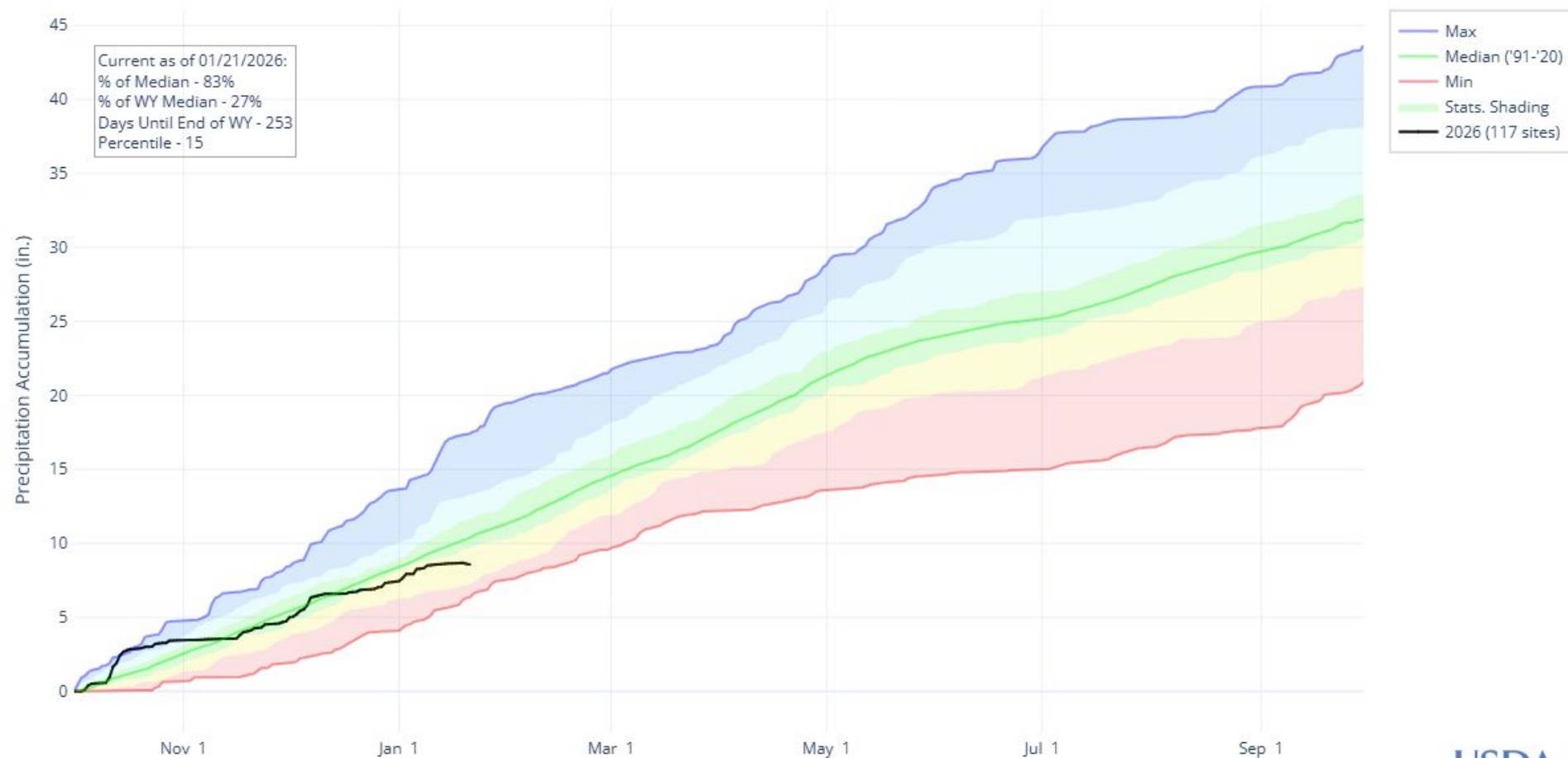
United States Department of Agriculture

# Colorado Snow Surveys

Precip Since San Juan  
Oct Storms



## PRECIPITATION ACCUMULATION IN STATE OF COLORADO



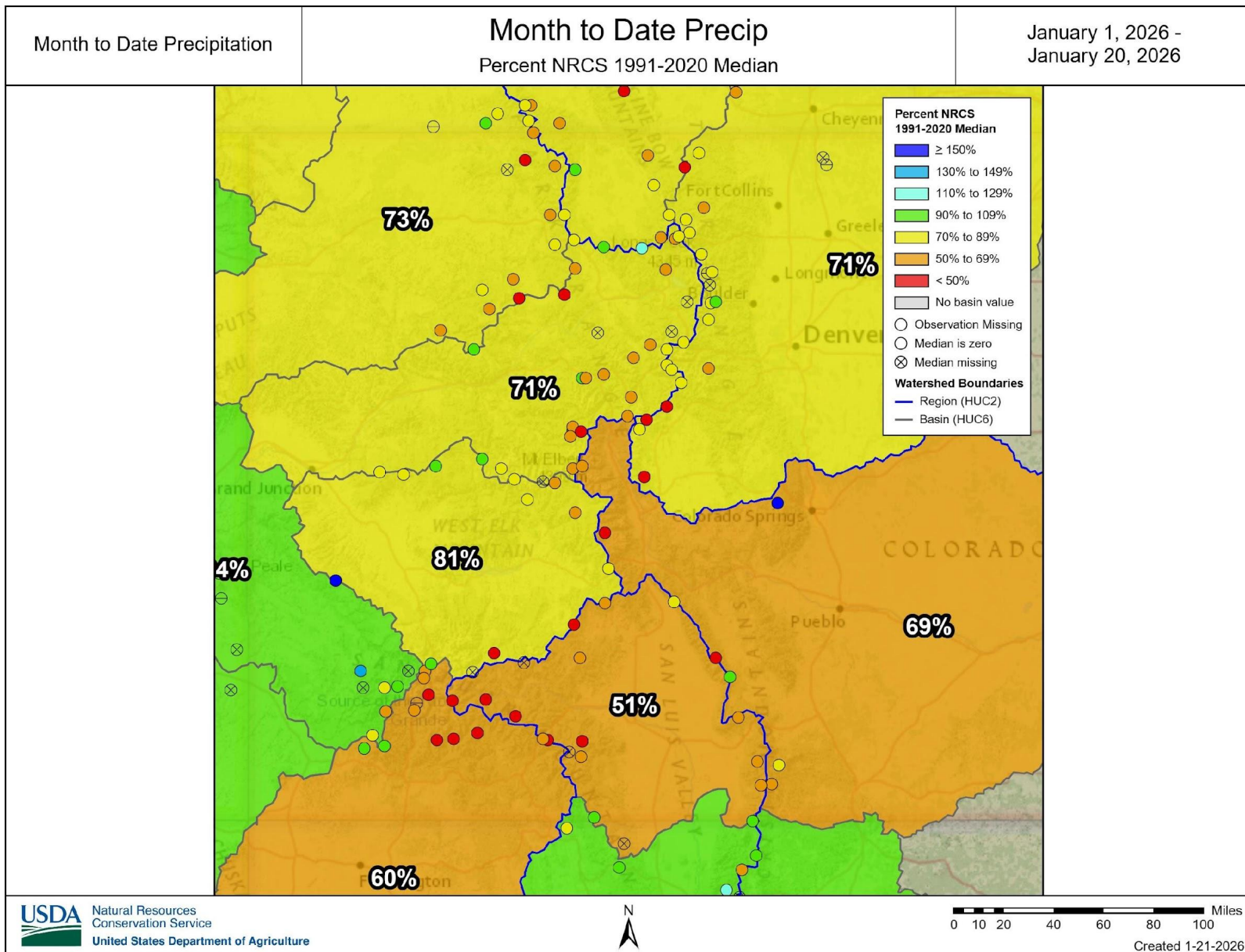




United States Department of Agriculture

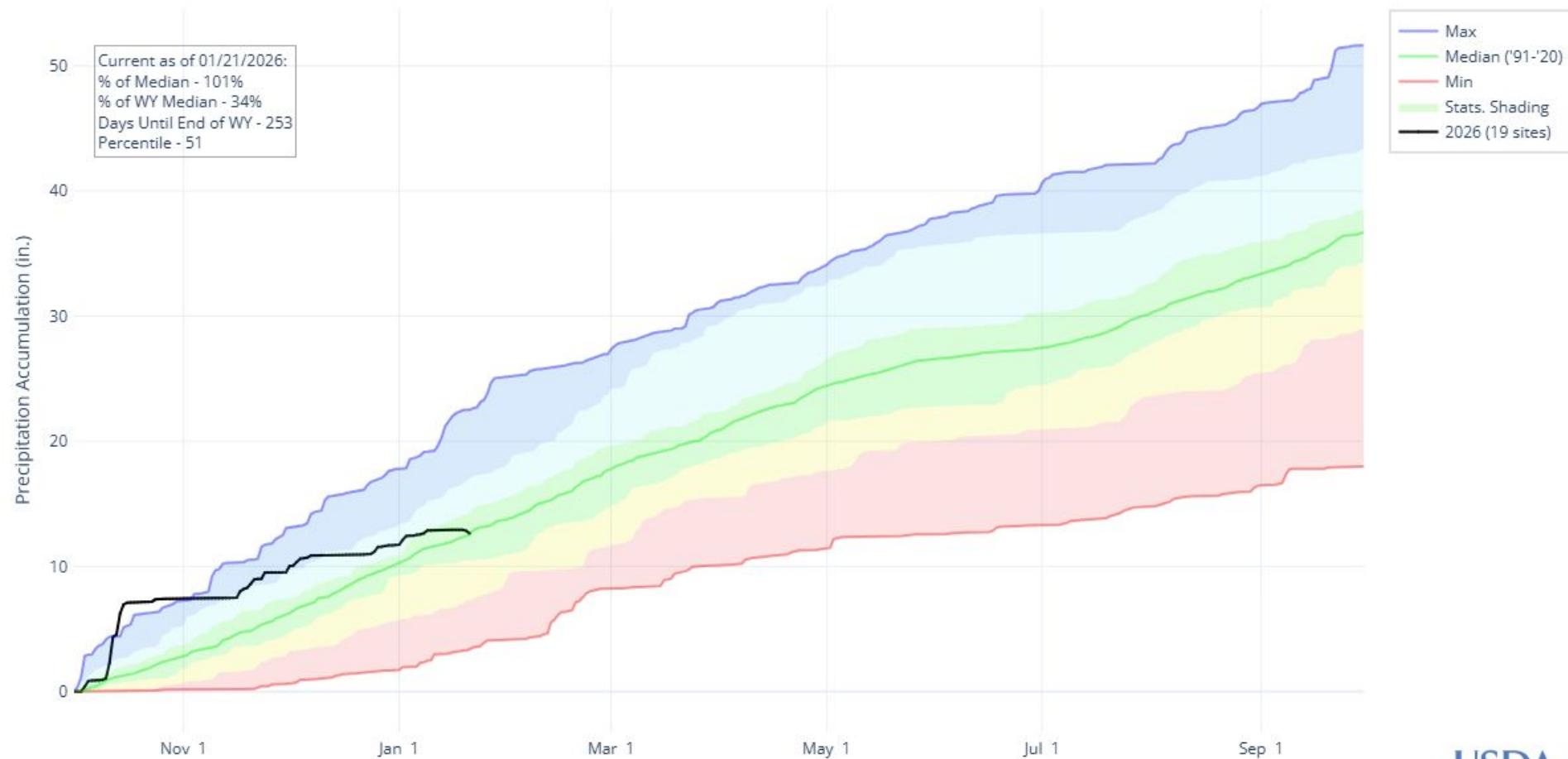
# Colorado Snow Surveys

## Colorado MTD Precip

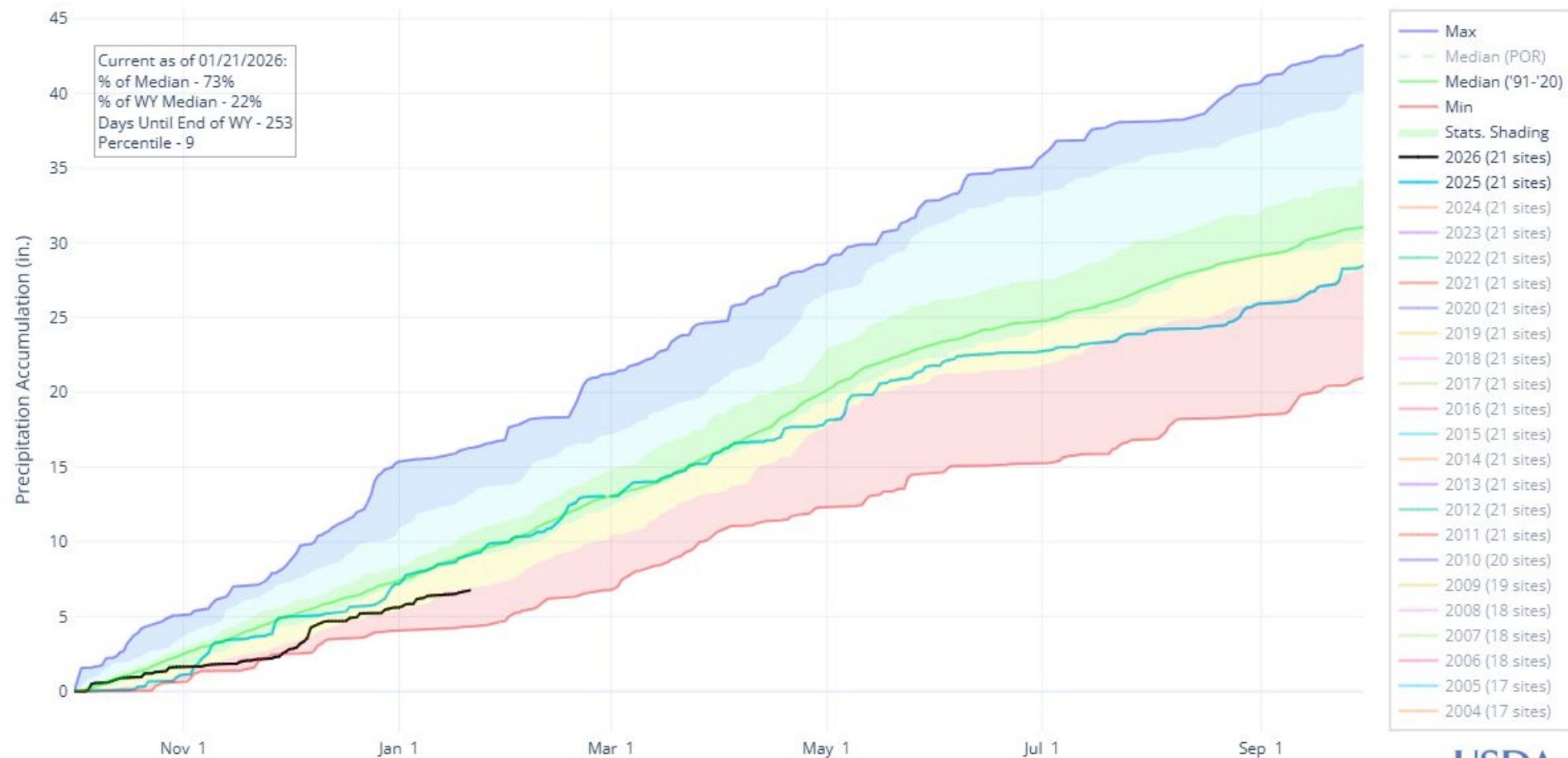




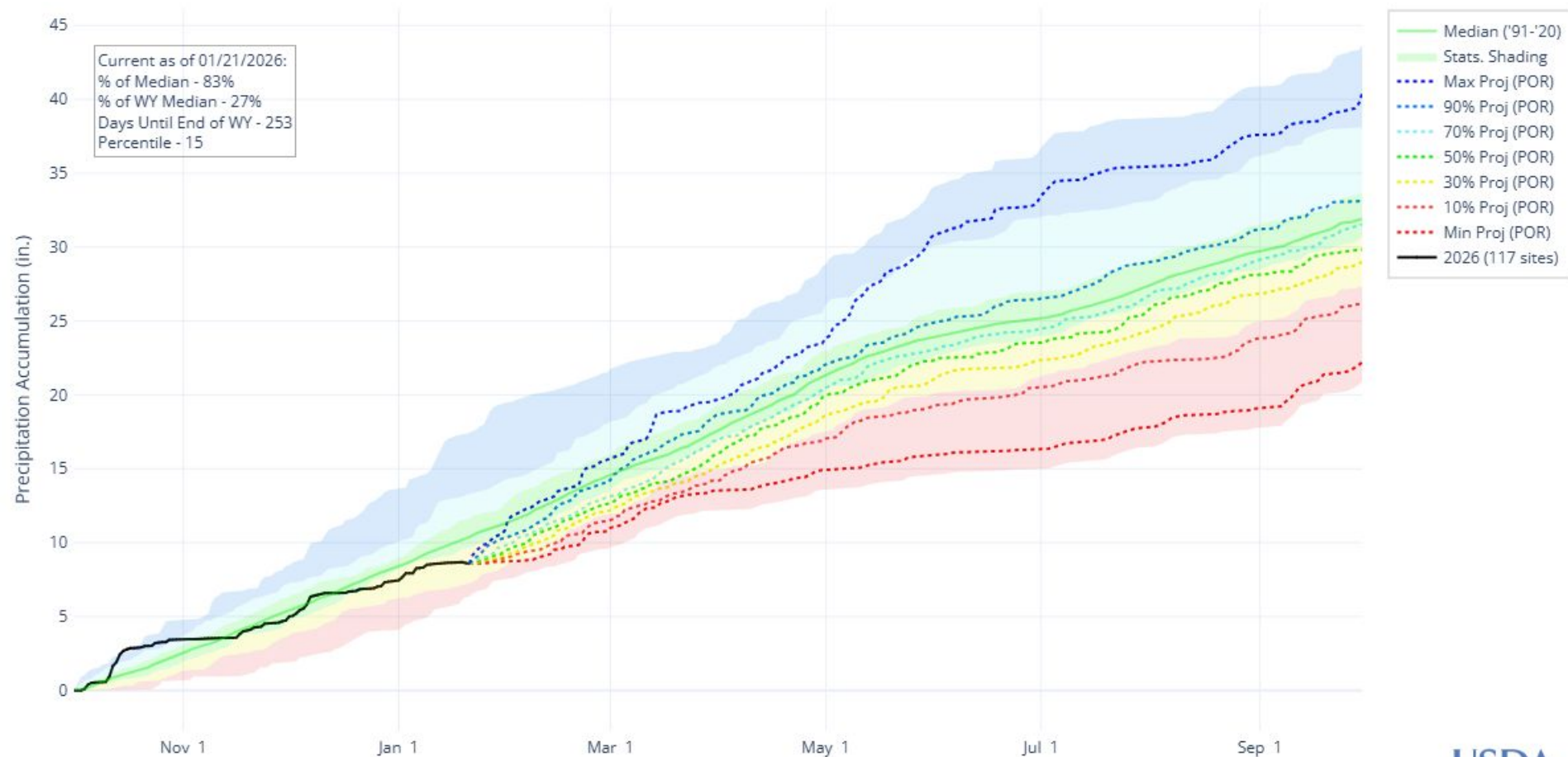
## PRECIPITATION ACCUMULATION IN SAN MIGUEL-DOLORES-ANIMAS-SAN JUAN



## PRECIPITATION ACCUMULATION IN SOUTH PLATTE



## PRECIPITATION ACCUMULATION PROJECTION IN STATE OF COLORADO





United States Department of Agriculture

# Colorado Snow Surveys

## Reservoirs

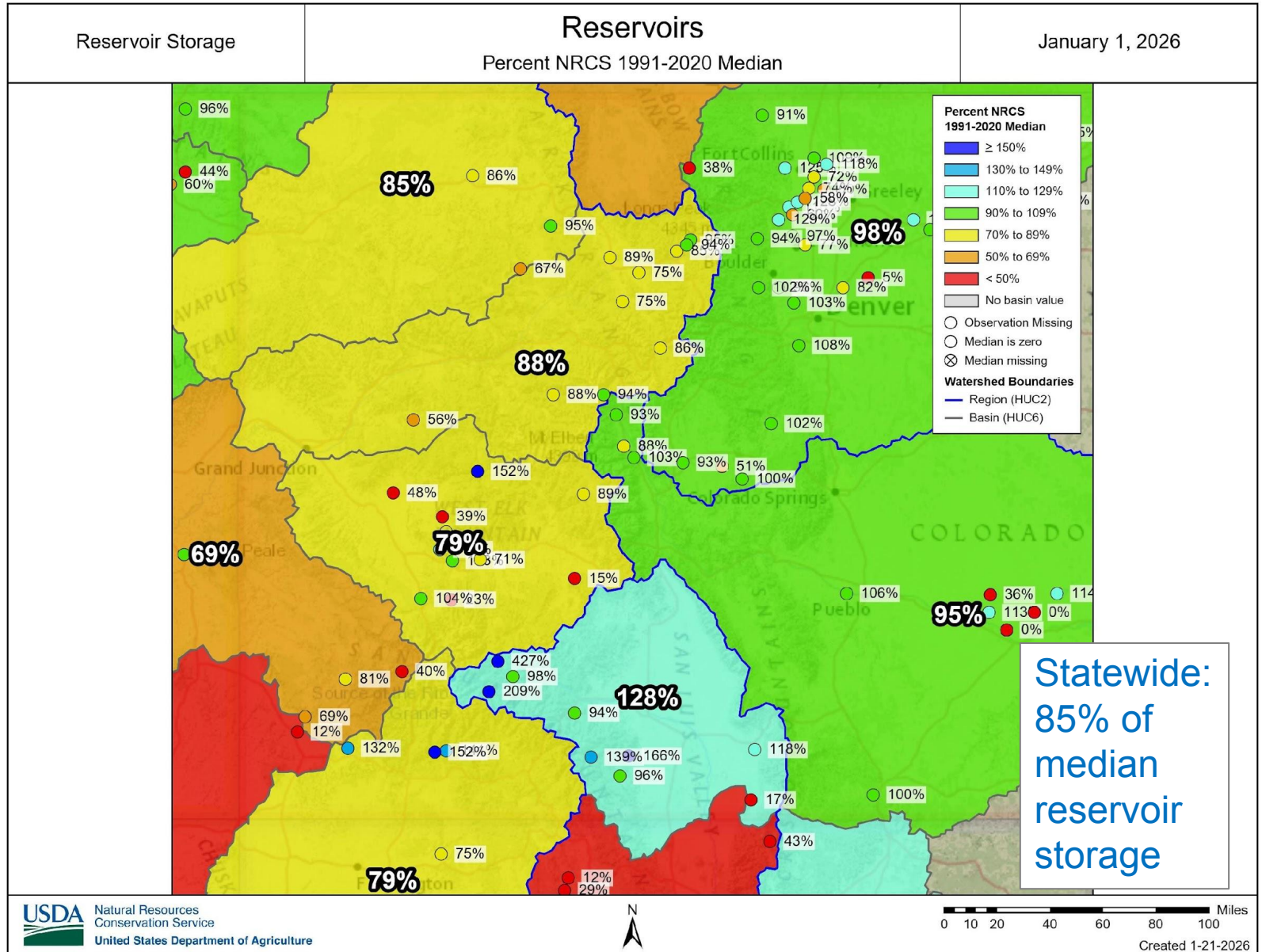




United States Department of Agriculture

# Colorado Snow Surveys

Statewide Reservoir Storage Jan 1





United States Department of Agriculture

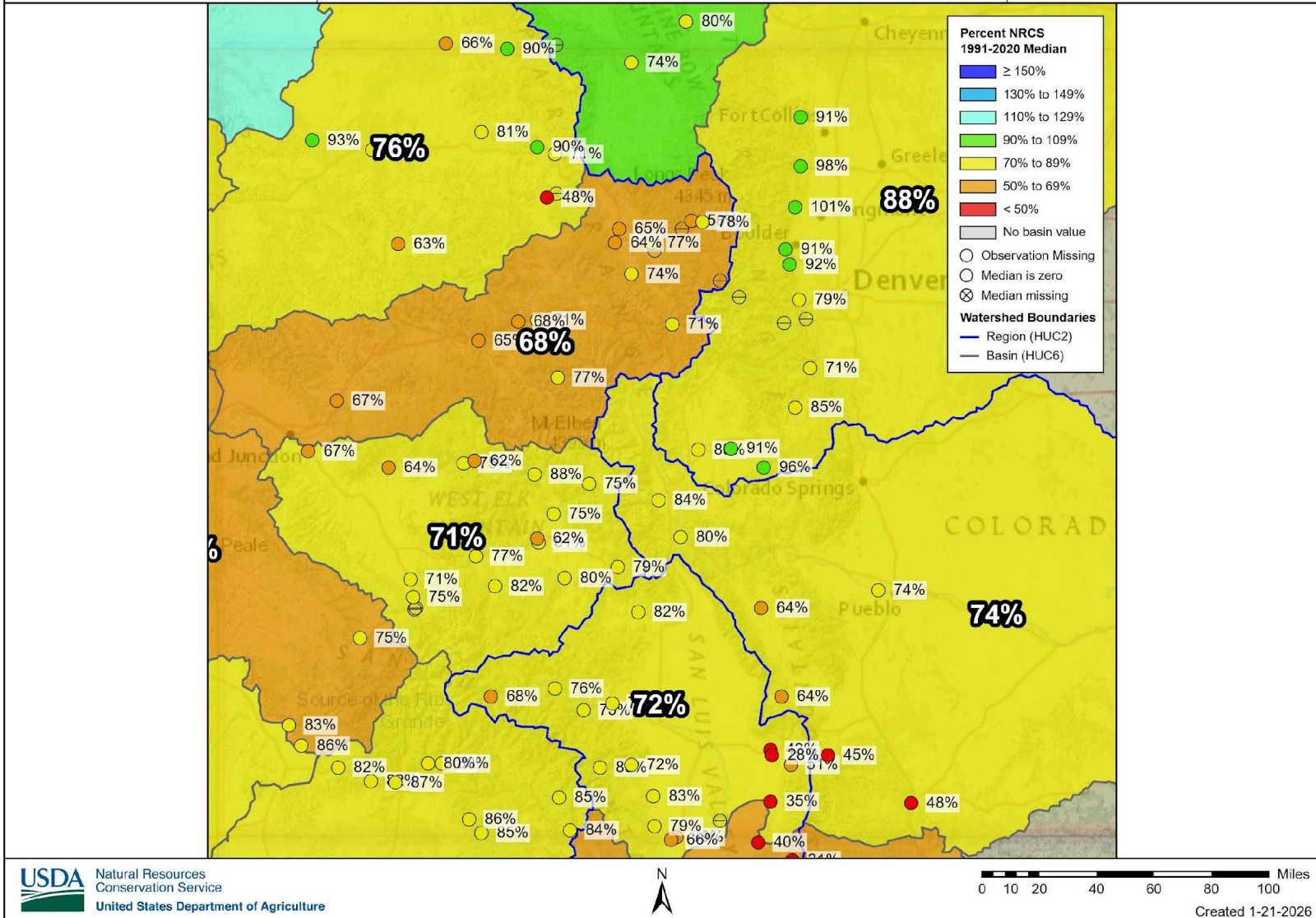
# Colorado Snow Surveys

## Streamflows

Streamflow Forecast Volume,  
50% Exceedance Probability

**Streamflow Forecasts**  
Percent NRCS 1991-2020 Median

Primary Period, January 1, 2026



## Summary

- Snowpack across Colorado is the lowest snowpack in the 40-year period of record which is 57% of median
  - At this point, half of the winter remains
  - To get back to normal snowpack levels, Colorado needs 145% of normal snow accumulation
  - Returning to near normal snowpack level is a long shot this year
- Statewide precipitation is also below normal at 83% of median
  - Propped up by the October storms in the San Juan Mountains
  - Without those storms, statewide precip would be much lower
- Statewide reservoir storage is at 85% of median
- Streamflow Forecasts were last generated on Jan 1 observations
  - These forecasts projected below normal runoff in most locations
  - Feb 1 forecasts will likely be lower based on below normal Jan snow accumulation





## Non-Discrimination Statement:

In accordance with Federal civil rights law and U.S. Department of agriculture (USDA) civil rights regulations and policies, the USDA, its Agencies, offices, and employees, and institutions participating in or administering USDA programs are prohibited from discriminating based on race, color, national origin, religion, sex, gender identity (including gender expression), sexual orientation, disability, age, marital status, family/parental status, income derived from a public assistance program, political beliefs, or reprisal or retaliation for prior civil rights activity, in any program or activity conducted or funded by USDA (not all bases apply to all programs). Remedies and complaint filing deadlines vary by program or incident.

Persons with disabilities who require alternative means of communication for program information (e.g., Braille, large print, audiotape, American Sign Language, etc.) should contact the responsible Agency or USDA 's TARGET Center at (202) 720-2600 (voice and TTY) or contact USDA through the Federal Relay Service at (800) 877-8339. Additionally, program information may be made available in languages other than English.

To file a program discrimination complaint, complete the USDA Program Discrimination Complaint Form, AD-3027, found online at [How to File a Program Discrimination Complaint](#) and at any USDA office or write a letter addressed to USDA and provide in the letter all of the information requested in the form. To request a copy of the complaint form, call [866] 632-9992. Submit your completed form or letter to USDA by: (1) mail: U.S. Department of Agriculture, Office of the Assistant Secretary for Civil Rights, 1400 Independence Avenue, SW, Washington, D.C. 20250-9410; (2) fax: (202) 690-7442; or (3) email: [program.intake@usda.gov](mailto:program.intake@usda.gov).



United States Department of Agriculture

Colorado Snow Surveys

# Water Conditions Monitoring Committee Meeting January 22<sup>nd</sup>, 2026

## NRCS Snow Survey and Water Supply Forecasting Program

Brian Domonkos

Hydrologist

Brian.Domonkos@usda.gov

720-544-2853

<https://www.nrcs.usda.gov/colorado/snow-survey>