



United States Department of Agriculture

Colorado Snow Surveys

# Water Conditions Monitoring Committee Meeting

April 22<sup>nd</sup>, 2025

NRCS Snow Survey and Water Supply Forecasting  
Program

Nagam Bell

Hydrologist

[Nagam.Gill@usda.gov](mailto:Nagam.Gill@usda.gov)

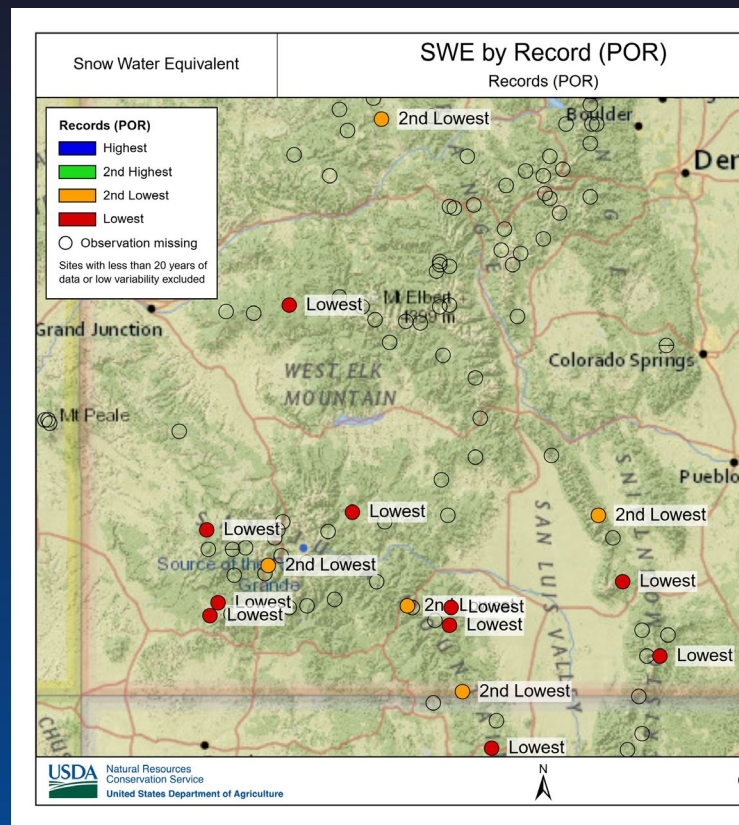
<http://www.nrcs.usda.gov/wps/portal/nrcs/main/co/snow/>

## Statewide Conditions as of 04/01/25 & 04/01/24

- Snow water equivalent 86% compared to 111% this time last year
- WYTD precipitation 92% & 103% (2024)
- 30 day precipitation 104% & 156% (2024)
- 60 day precipitation 100% & 130% (2024)
- Median Streamflow forecasts 86%
- Soil moisture 20" ranges from 56– 149%.  
8" VWC ranges from 67– 119%

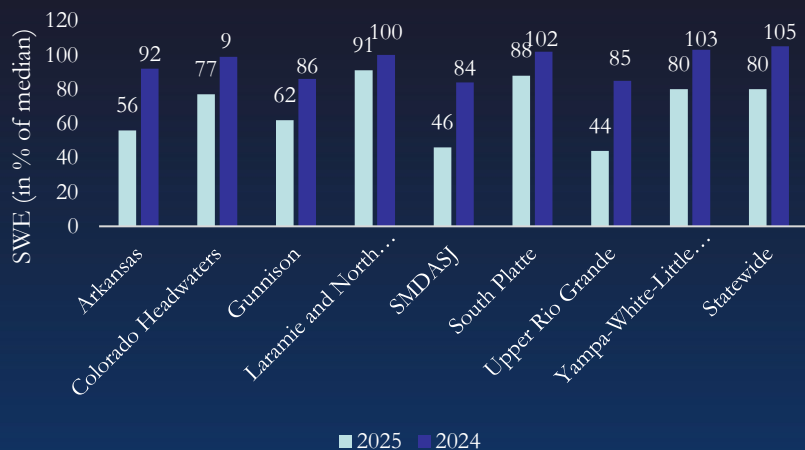
## Statewide Conditions as of 04/20/25

- Snow water equivalent 80%
- WYTD precipitation 98%
- 30 day precipitation 80%
- 60 day precipitation 79%

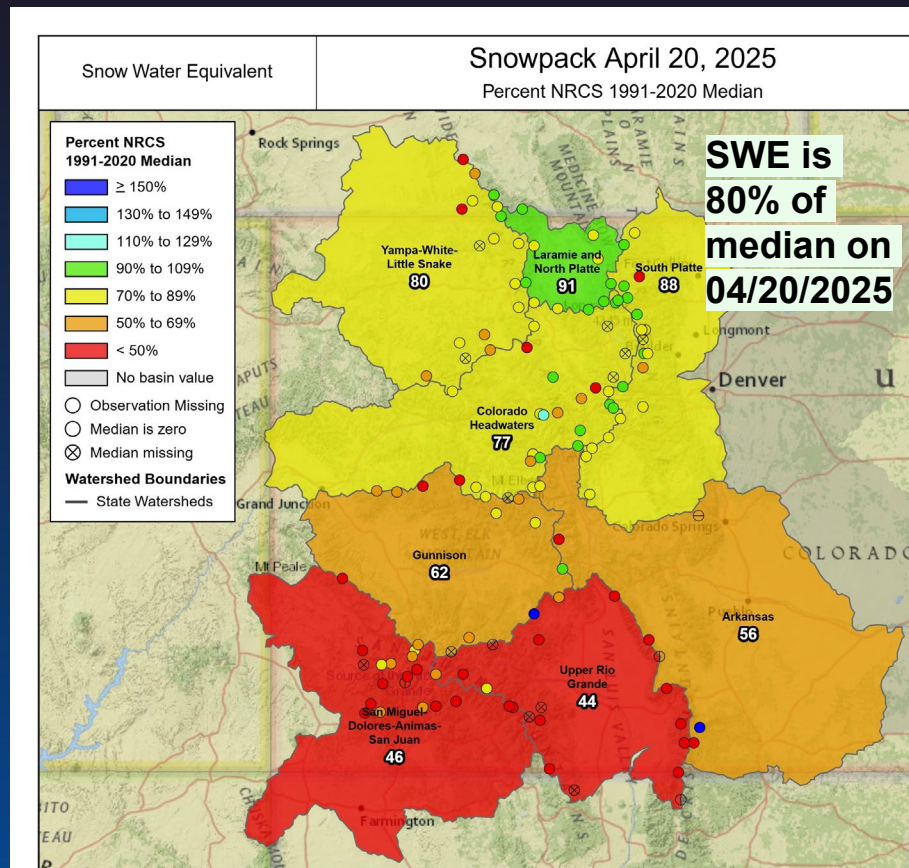
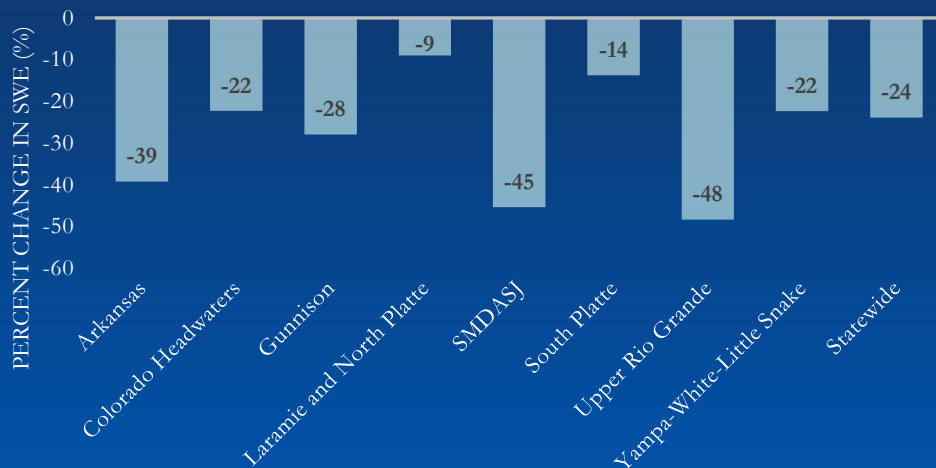


**April 18<sup>th</sup>**

Snow Water Equivalent April 20th 2025 vs April 20th 2024

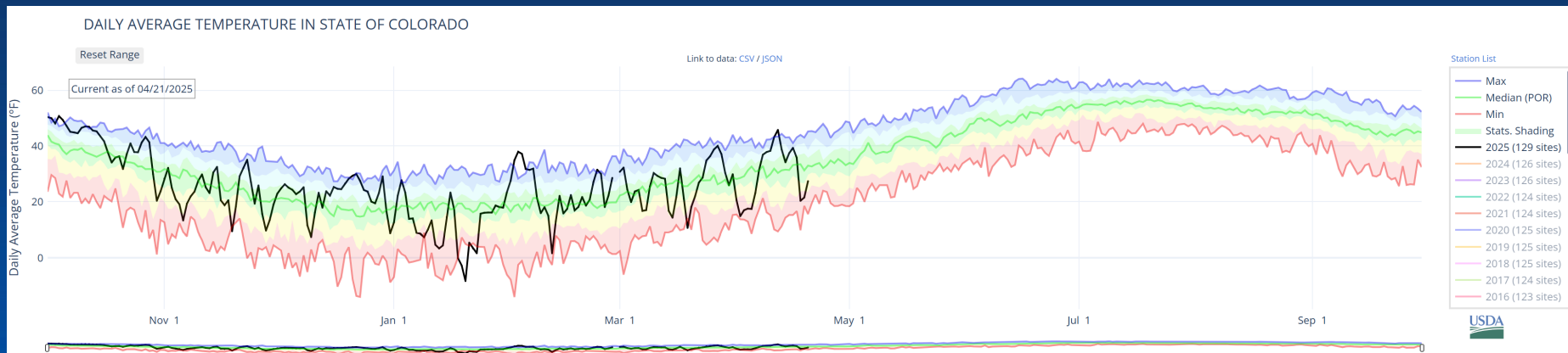
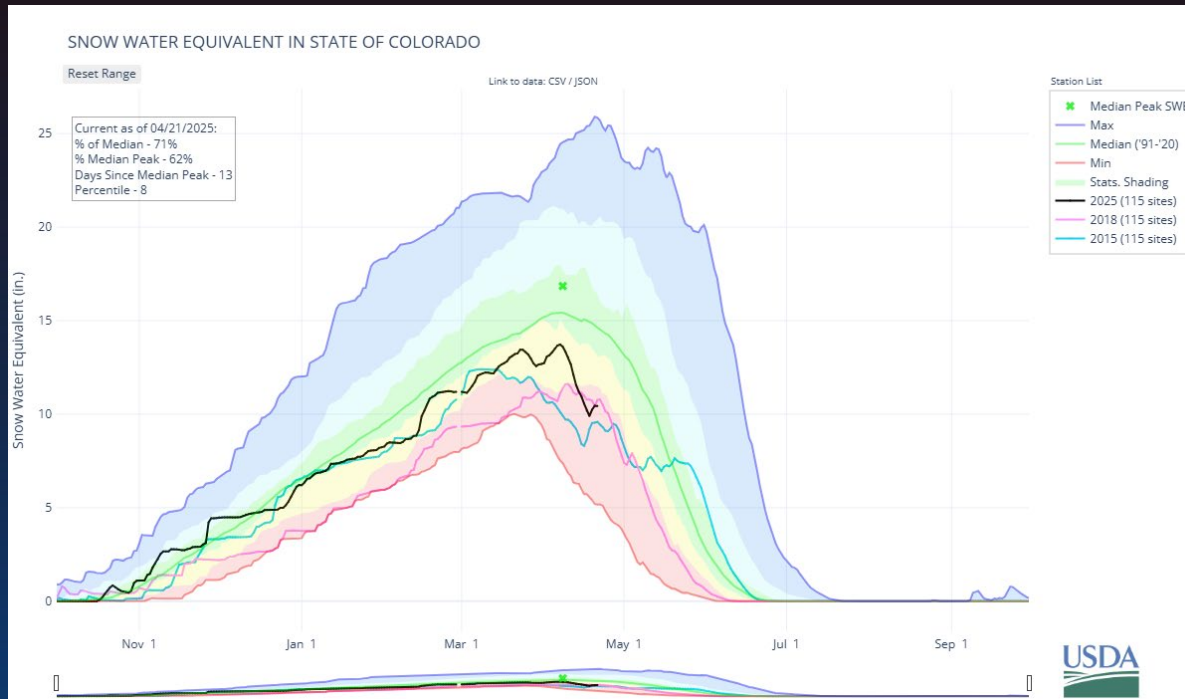


Percent Change in Snow Water Equivalent, April 20th 2025 vs April 20th 2024





# Colorado Snow Surveys



Statistical shading percentiles are calculated from period of record (POR) data, excluding the current water year. Percentile categories range from: minimum to 10th percentile, 10th - 30th, 30th - 70th, 70th - 90th, and 90th - maximum.

For more information visit: [30-Year Hydroclimatic Normals](#)

Updated: Monday, Apr 21, 2025 01 PM CST



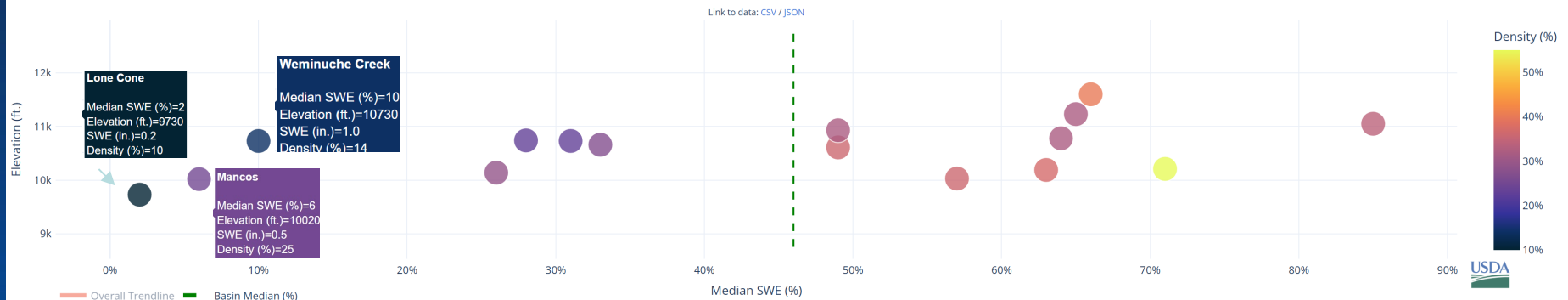


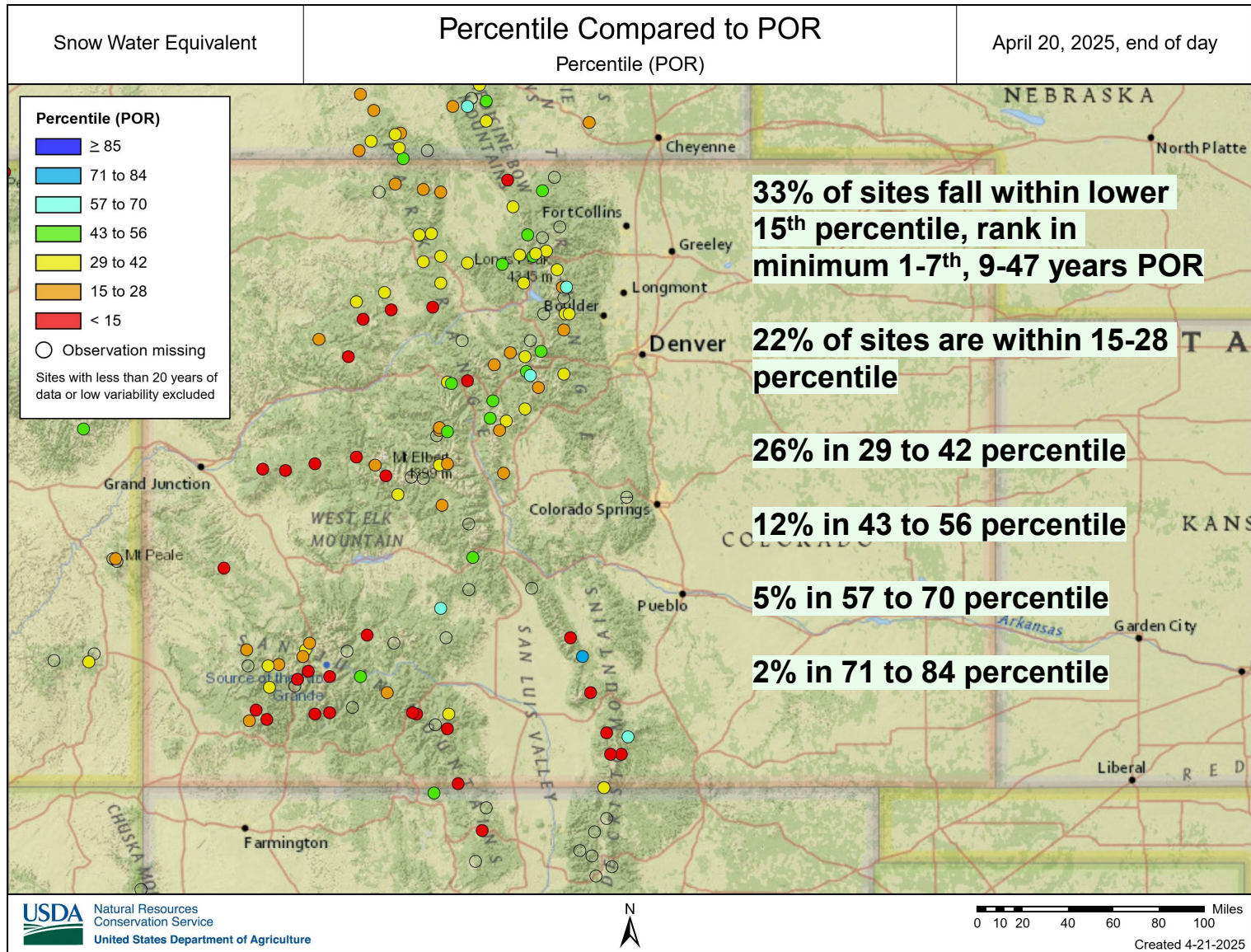
# Colorado Snow Surveys

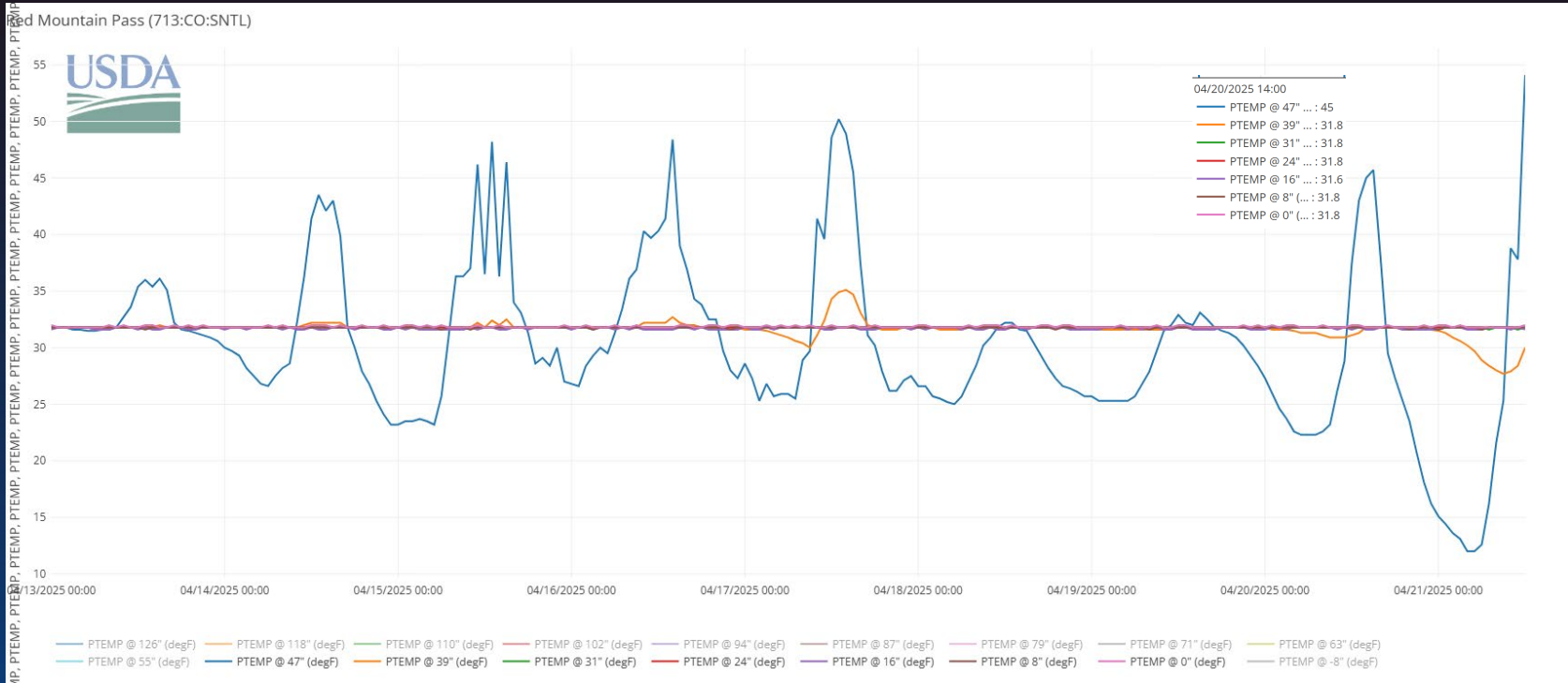
SNOWPACK BY ELEVATION IN STATE OF COLORADO APRIL 21, 2025



SNOWPACK BY ELEVATION IN SAN MIGUEL-DOLORES-ANIMAS-SAN JUAN APRIL 21, 2025



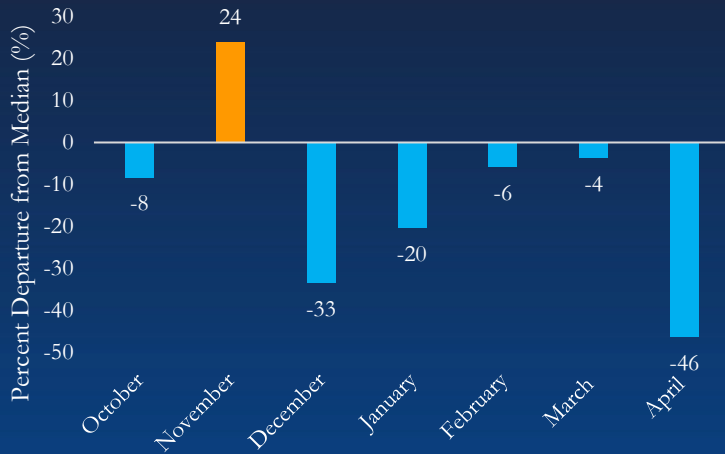




Median melt out date is  
June 10<sup>th</sup> at Red Mountain Pass



Satewide Precipitation Percent Departure  
WY25 from Normal

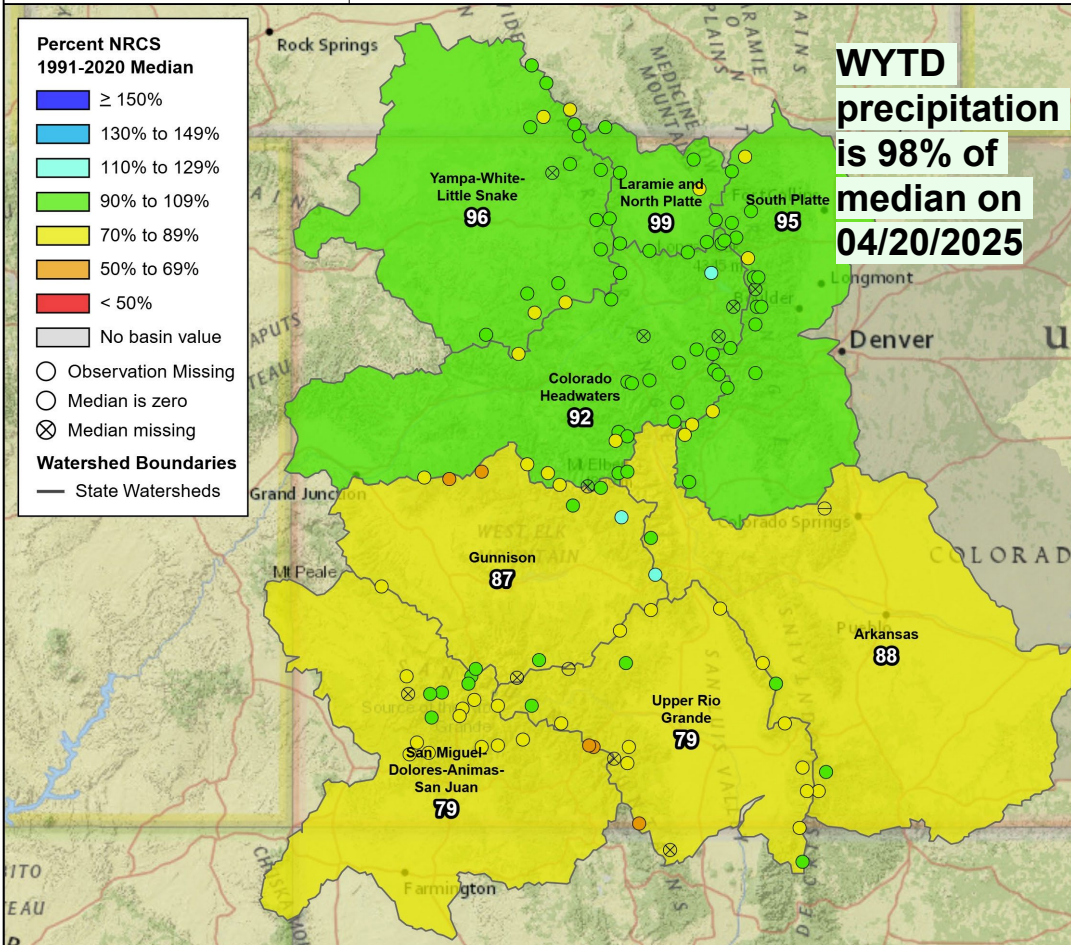


\*April comparison is incomplete as normal data includes the entire month of April and current WY data is through 4/20/25

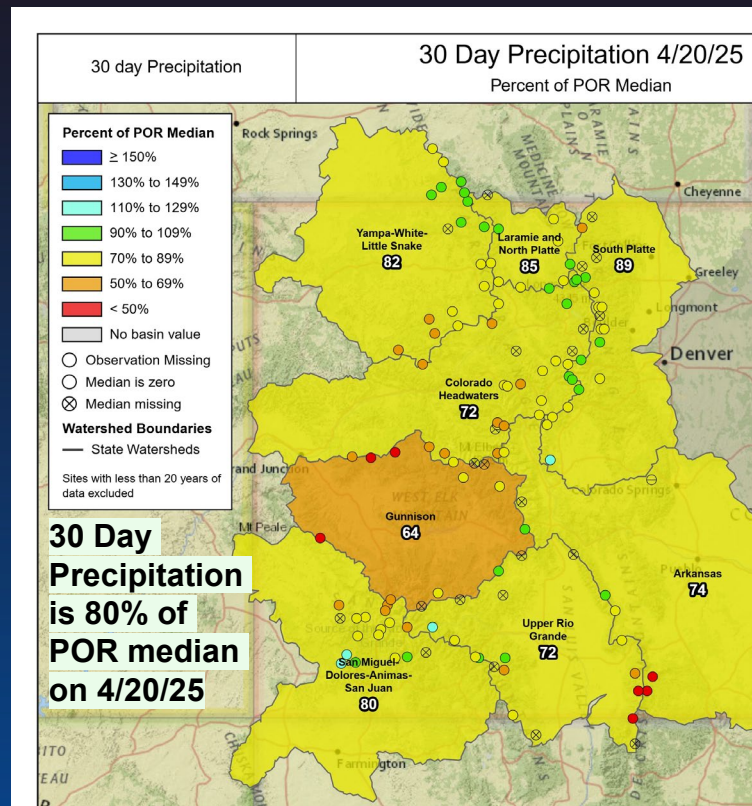
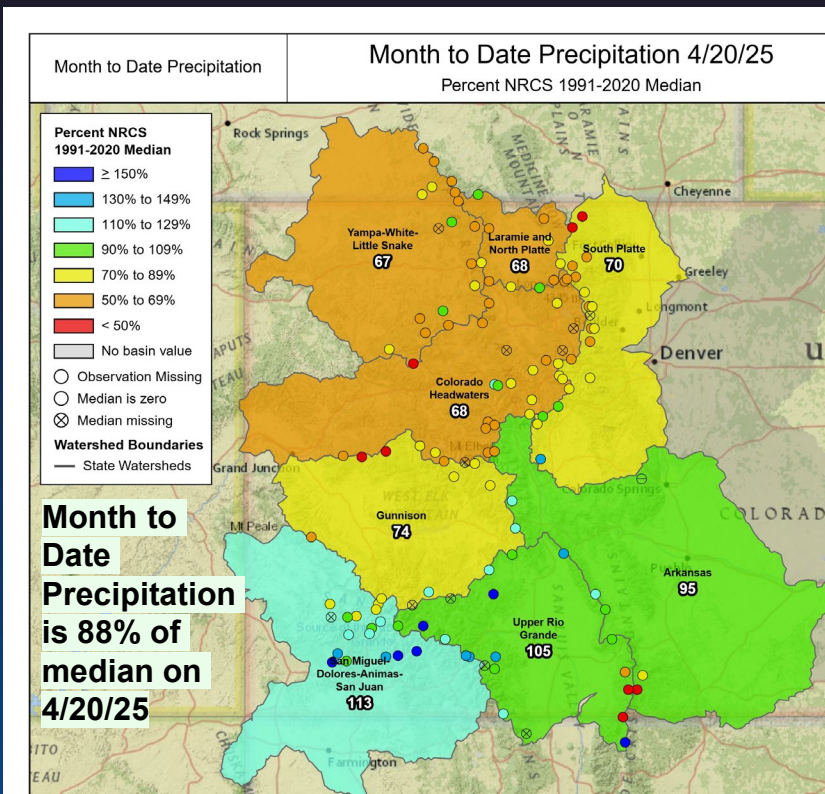
Water Year to Date Precipitation

WYTD Precipitation 4/20/25

Percent NRCS 1991-2020 Median

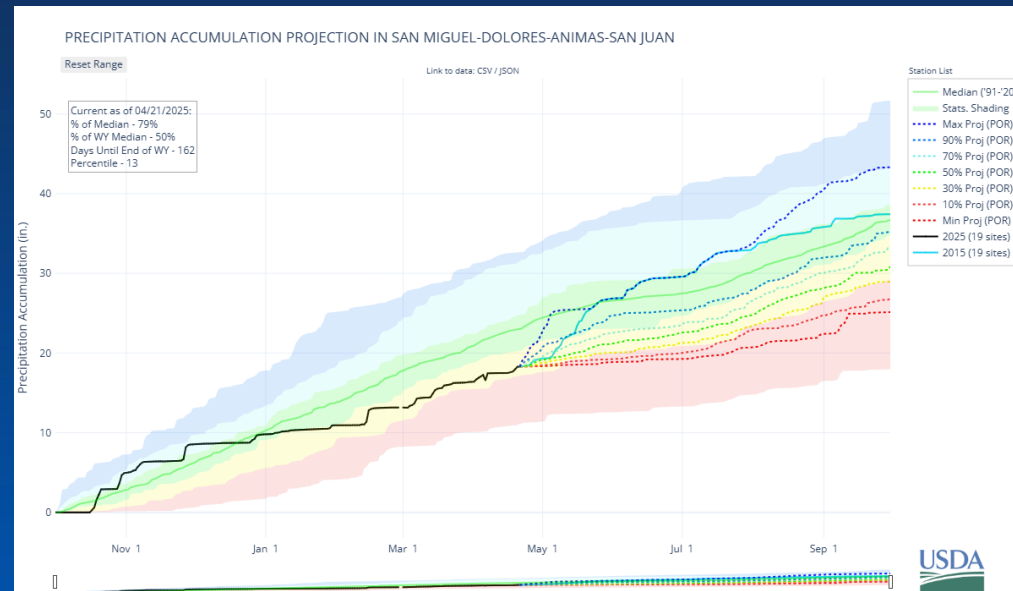
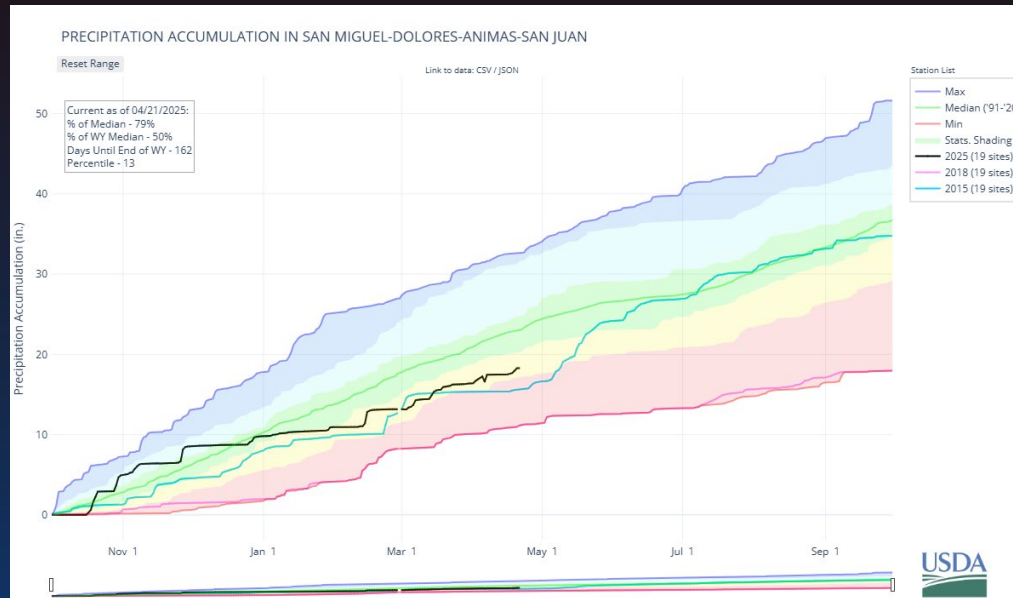






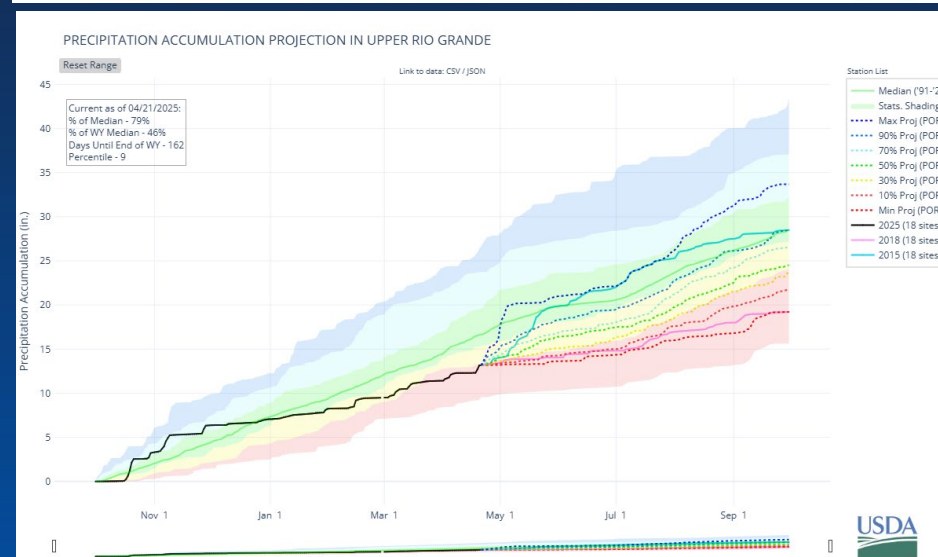
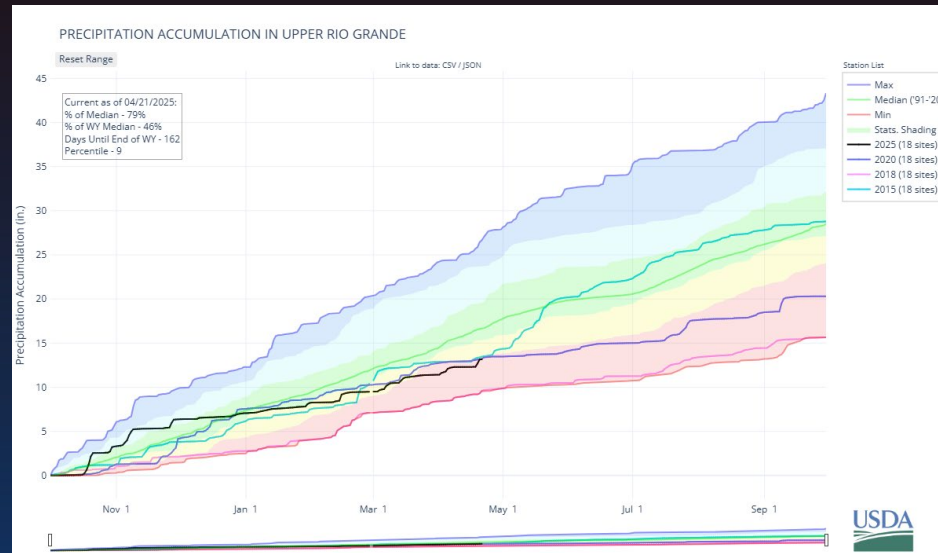


# Colorado Snow Surveys





# Colorado Snow Surveys

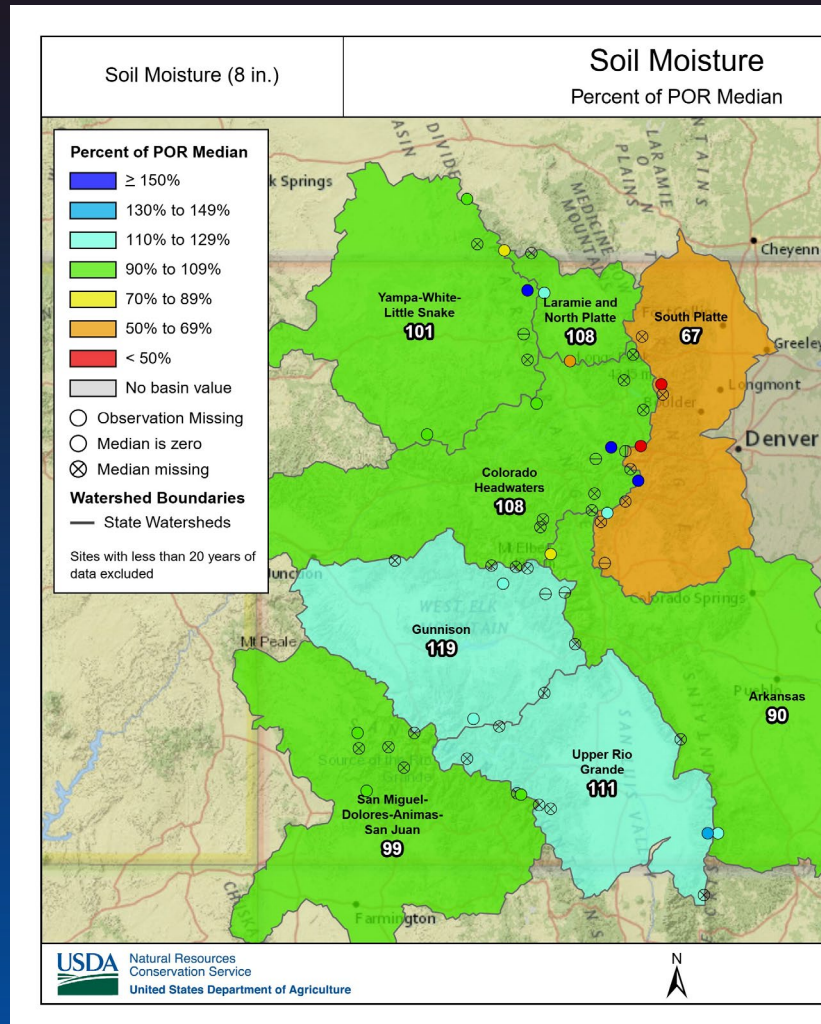
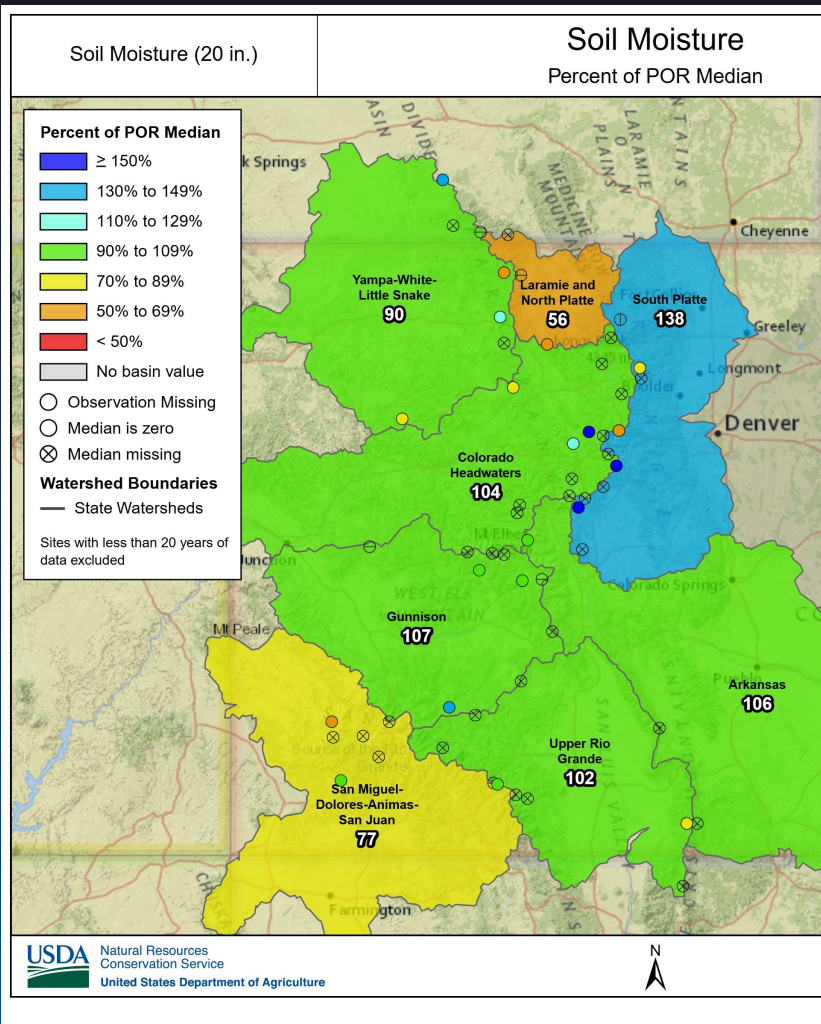






United States Department of Agriculture

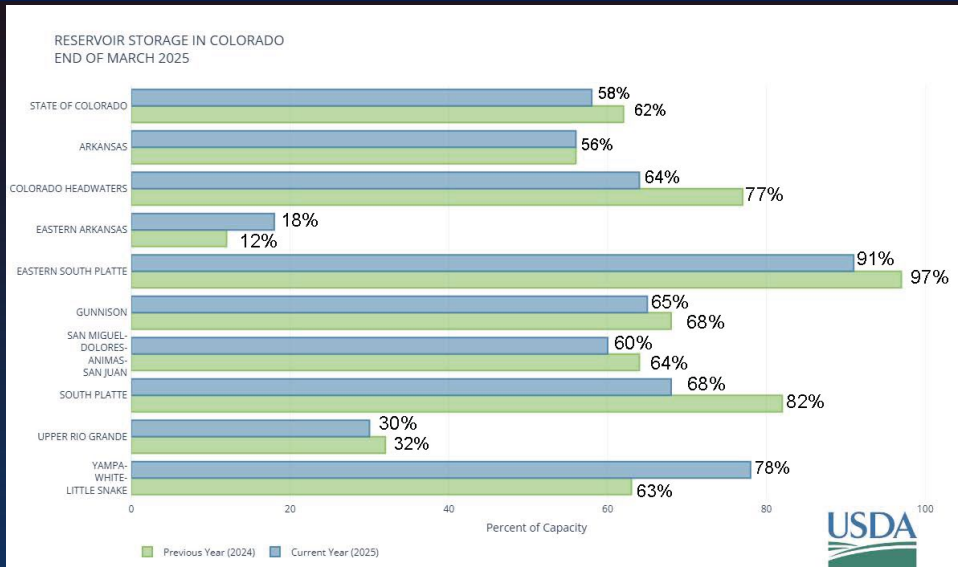
# Colorado Snow Surveys



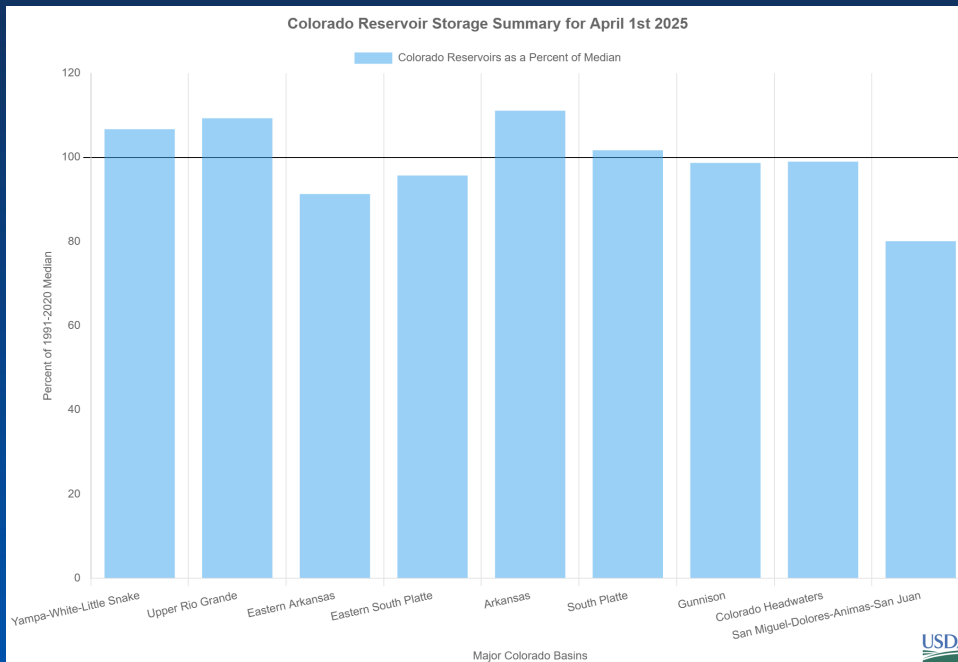




# Colorado Snow Surveys



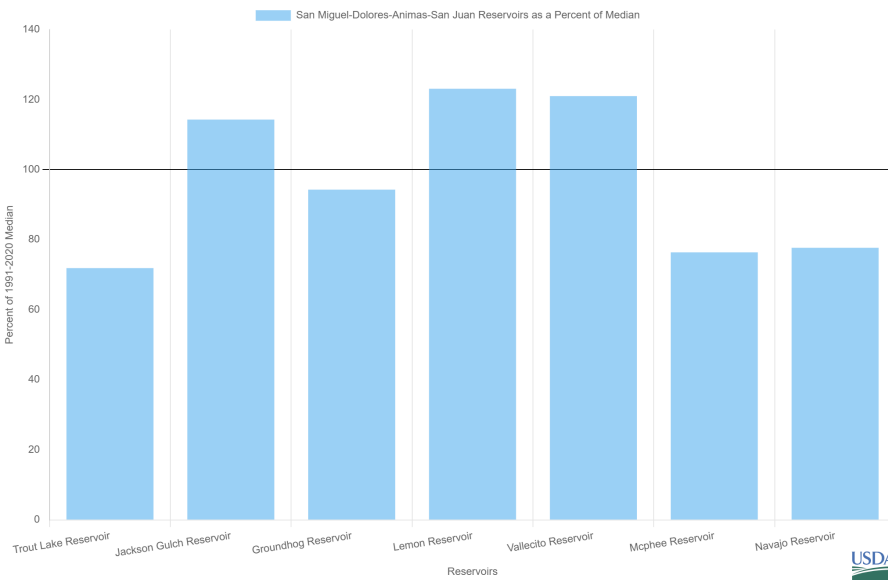
**Statewide Reservoir storage is at 94% of median on April 1<sup>st</sup> 2025 compared to 99% April 1<sup>st</sup> 2024**



**- SMDASJ 80% of median**

# Colorado Snow Surveys

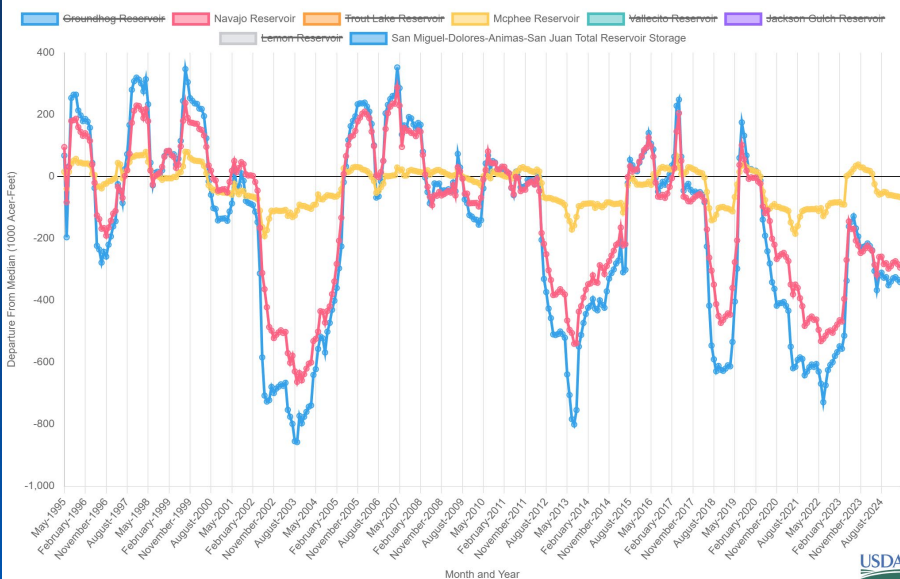
### San Miguel-Dolores-Animas-San Juan Reservoir Storage Summary for April 1st 2025



**Mcphee Reservoir storage capacity is 56% & 76% of median. Anomaly (POR) -64 kac-ft**

**Navajo Reservoir storage capacity is 60% & 78% of median. Anomaly (POR) -161 kac-ft**

### San Miguel-Dolores-Animas-San Juan Departure From Median Timeseries Plot





Available Basins **58** Options

Gunnison

Select a basin to create a report.

Display Style

☒ Show All Sites

☐ Use Scroll Bar

Choose how site data should be displayed

Display Reports

☐ Snowpack

☐ Precipitation

☐ Forecasts

☒ Reservoirs

Select the reports you'd like displayed

Search:

Reservoir Summary for for April 1, 2025

GUNNISON				Water Year 2025			Water Year 2024			
Site	Elevation (ft)	Capacity (kaf)	Median (kaf)	Median % Capacity	Storage (kaf)	% Capacity	% Median	Storage (kaf)	% Capacity	% Median
Blue Mesa Reservoir	7520	830	514.8	62	496.105	60	96	551.167	66	107
Crawford Reservoir	6470	14	7.5	54	7.316	52	98	8.361	60	111
Crystal Reservoir	6760	17.5	8.6	49	9.184	52	107	8.967	51	104
Fruitgrowers Reservoir	5470	3.6	3.8	106	2.638	73	69	2.99	83	79
Fruitland Reservoir	7320	9.2	2.2	24	--	--	--	1.321	14	60
Morrow Point Reservoir	7190	121	109.8	91	114.733	95	104	107.468	89	98
Paonia Reservoir	6460	15.4	2.5	16	6.41	42	256	3.822	25	153
Ridgway Reservoir	6710	83	68.3	82	72.36	87	106	66.676	80	98
Silverjack Reservoir	8860	12.8	4.8	38	1.134	9	24	1.368	11	29
Taylor Park Reservoir	9340	106	68.6	65	68.93	65	100	68.757	65	100
Vouga Reservoir	8590	0.92	0.76	83	0.1	11	13	0.095	10	13
<b>Basin Index</b>						<b>65</b>	<b>99</b>	<b>68</b>	<b>104</b>	
<b># Reservoirs</b>						<b>10</b>	<b>10</b>	<b>--</b>	<b>11</b>	

11 Reservoirs in GUNNISON

Export Reservoir Table

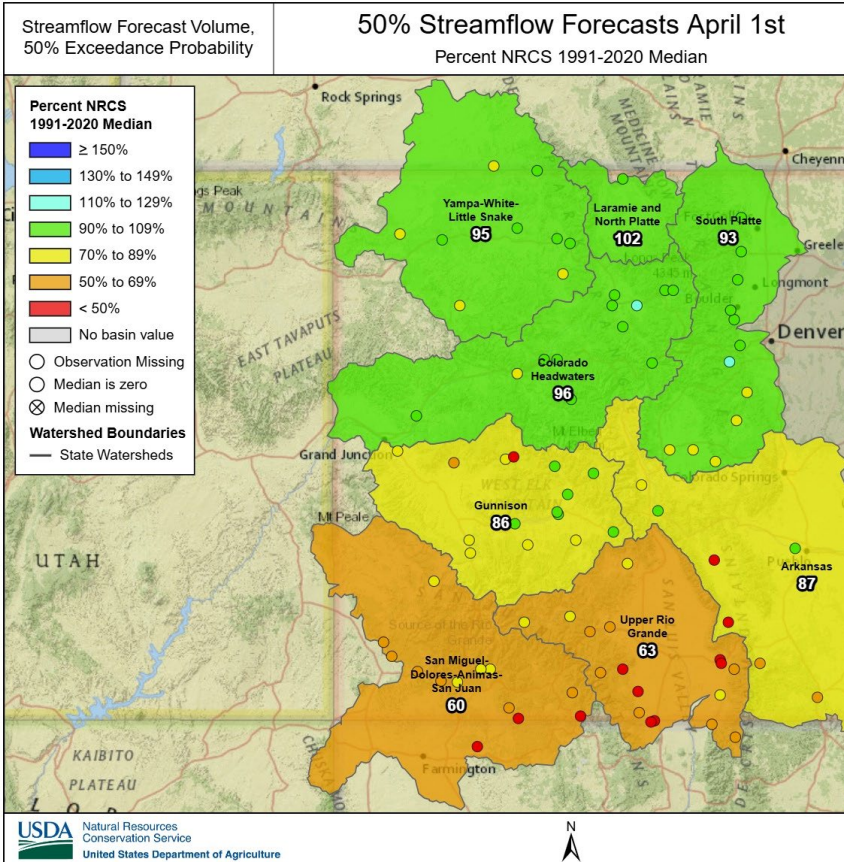
Scan QR code to access monthly basin reports



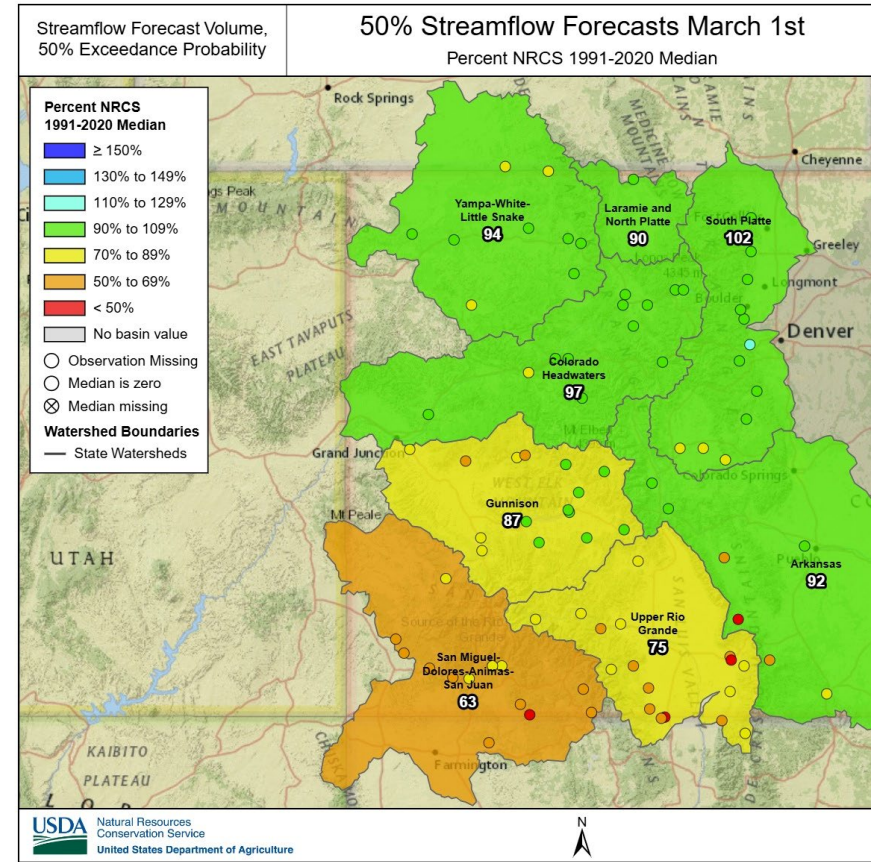


United States Department of Agriculture

# Colorado Snow Surveys

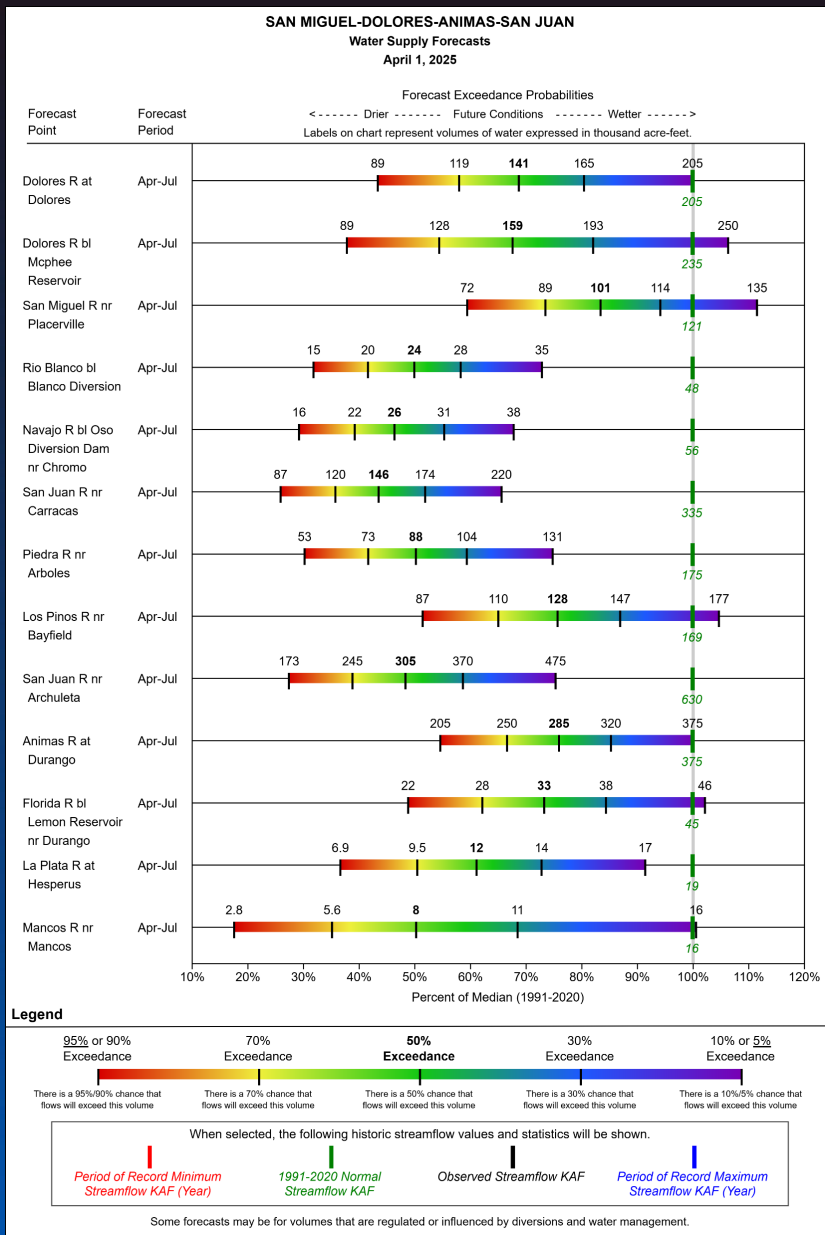


Statewide 50%  
exceedance  
probability April 1<sup>st</sup> is  
86%



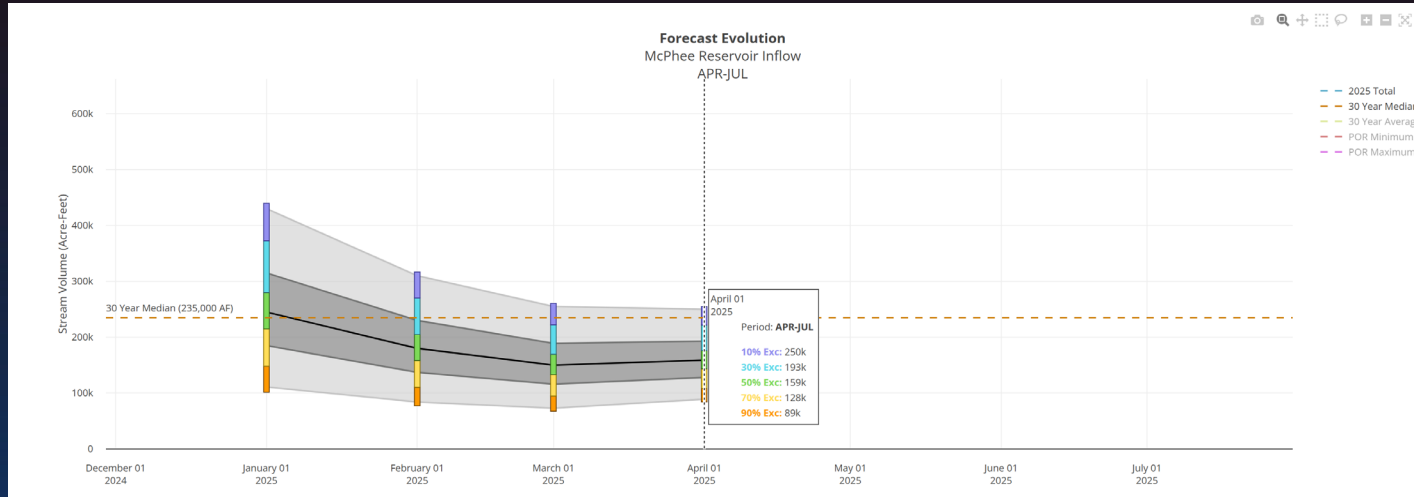
Statewide 50%  
exceedance  
probability March 1<sup>st</sup>  
is 88%



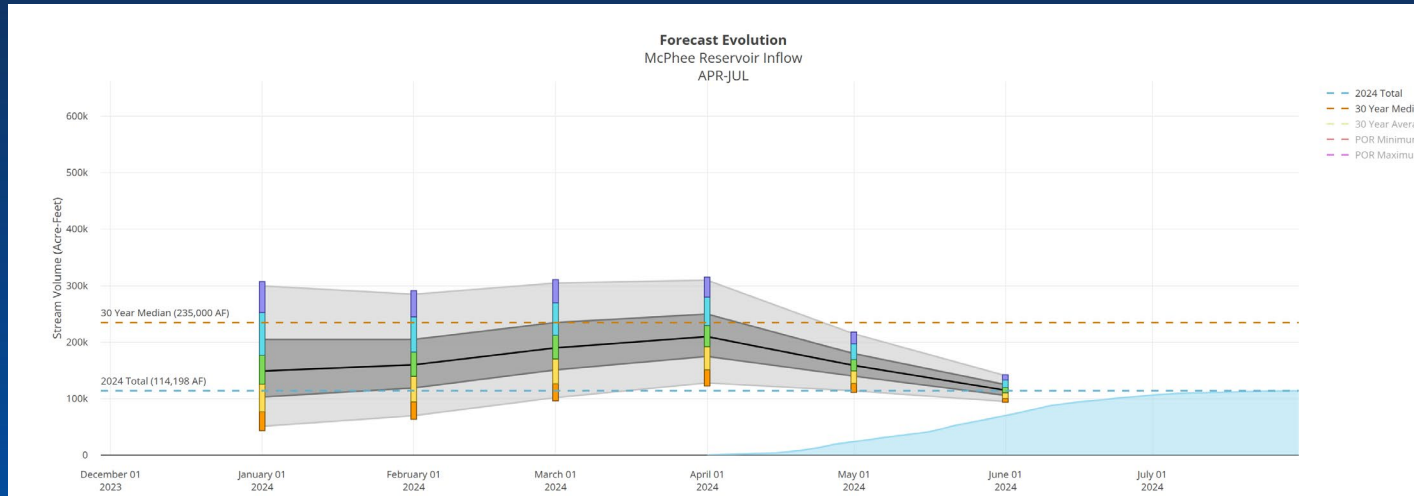




# Colorado Snow Surveys

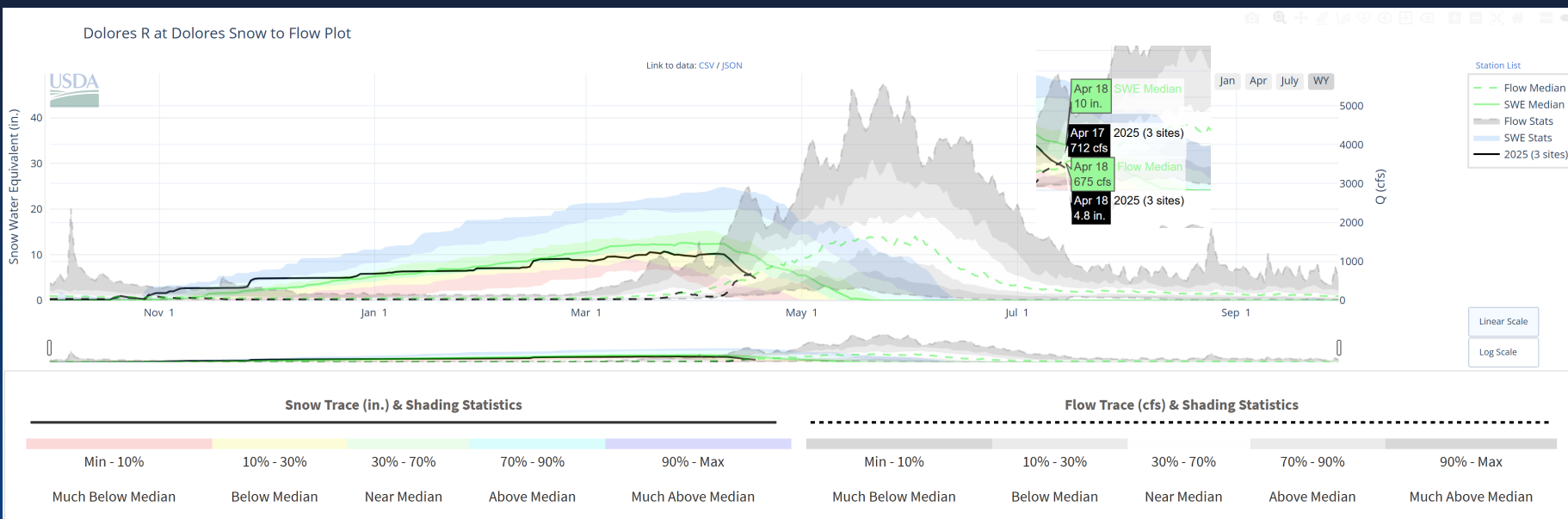


Scan QR code  
to access Forecast  
Evolution Plots



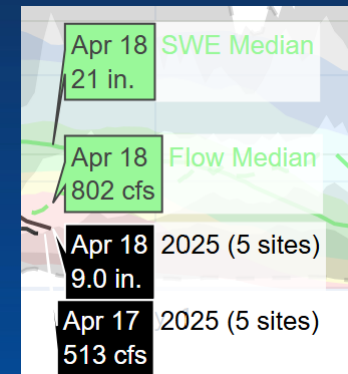
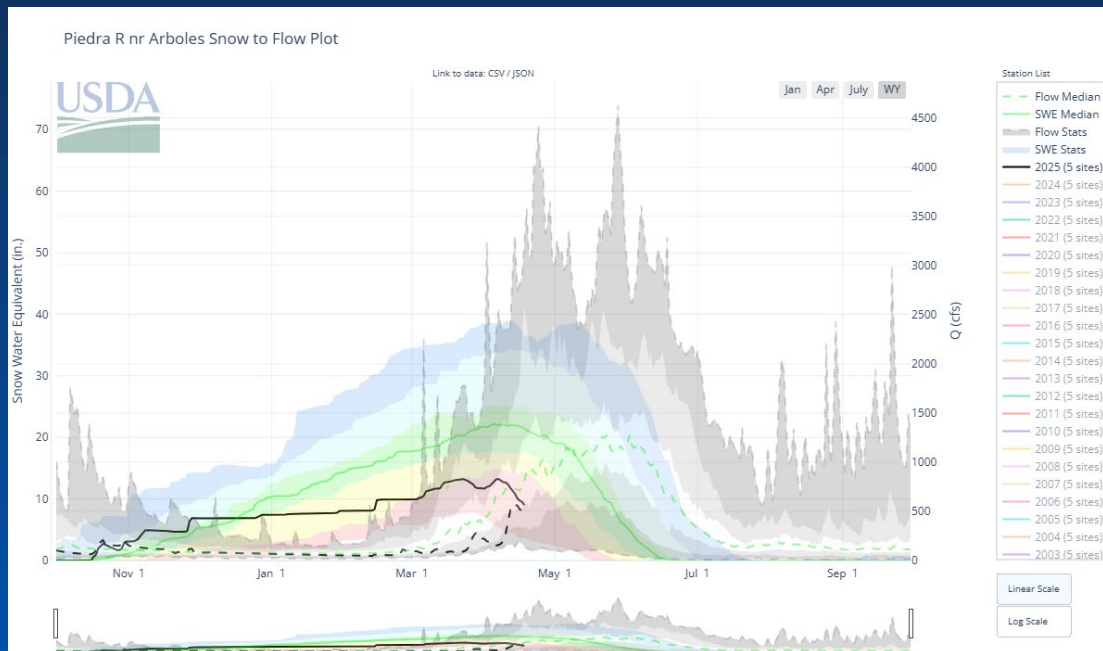
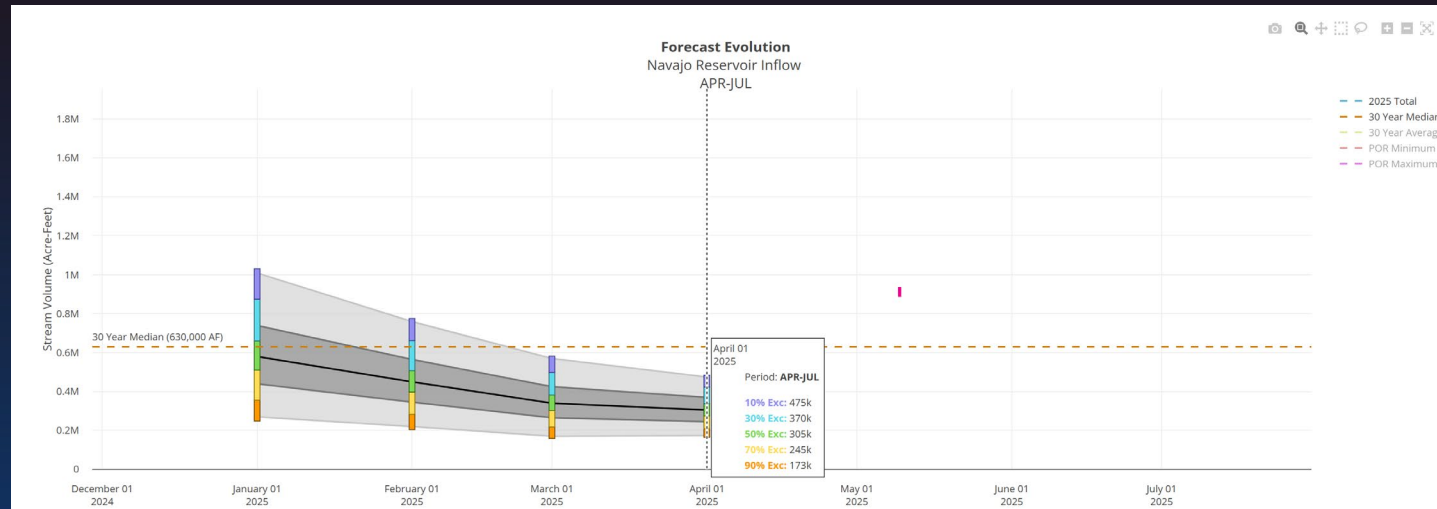


# Colorado Snow Surveys

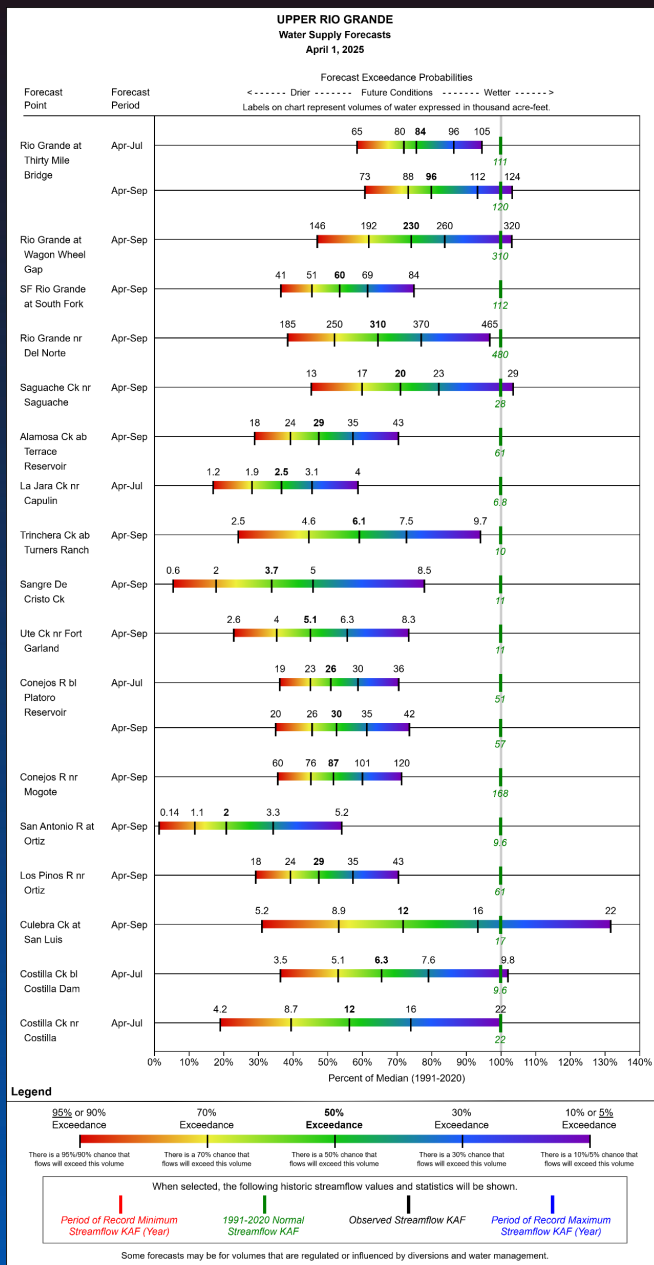




# Colorado Snow Surveys

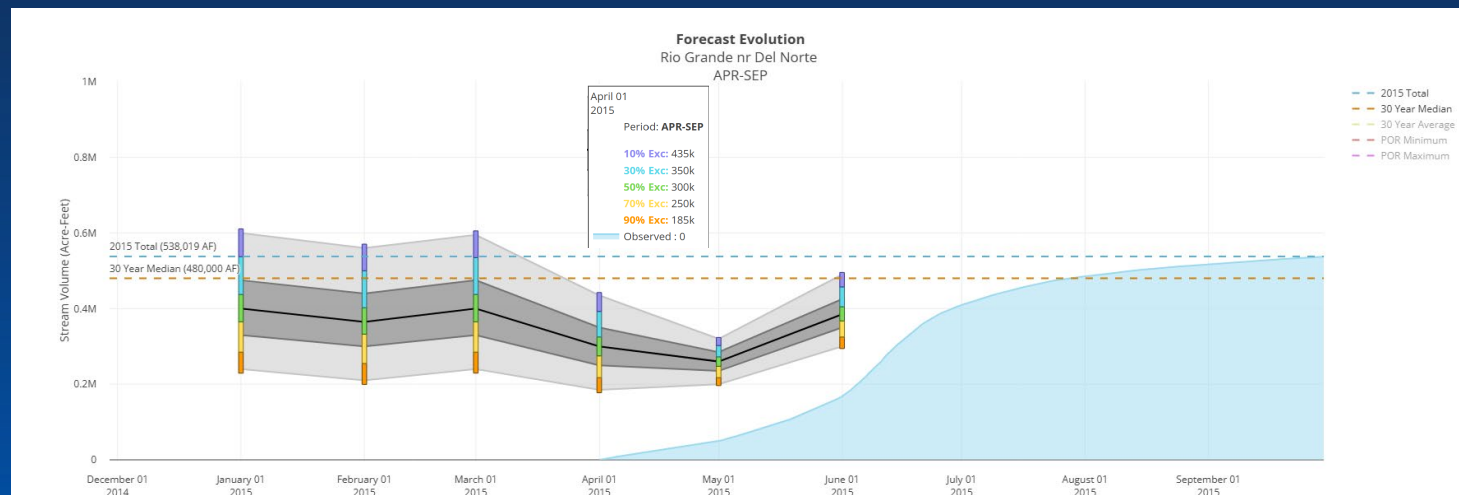
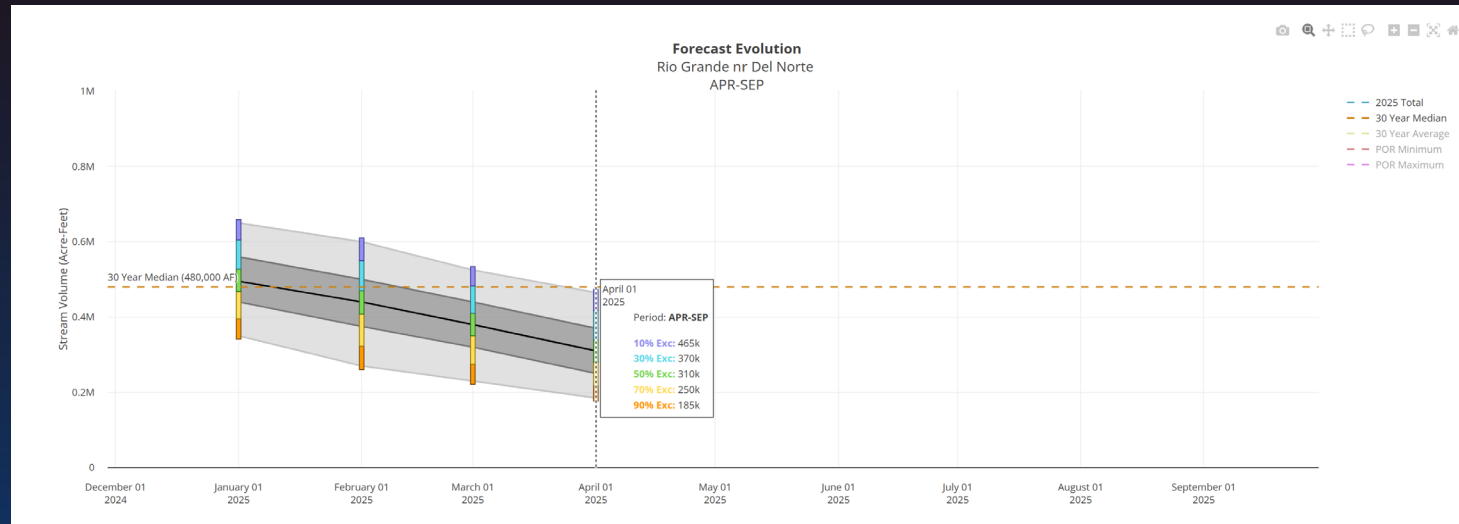






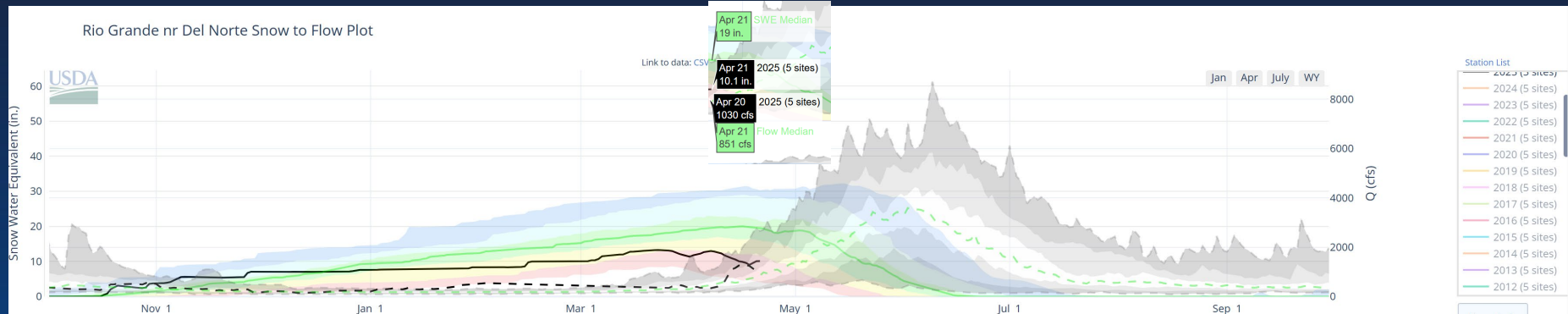


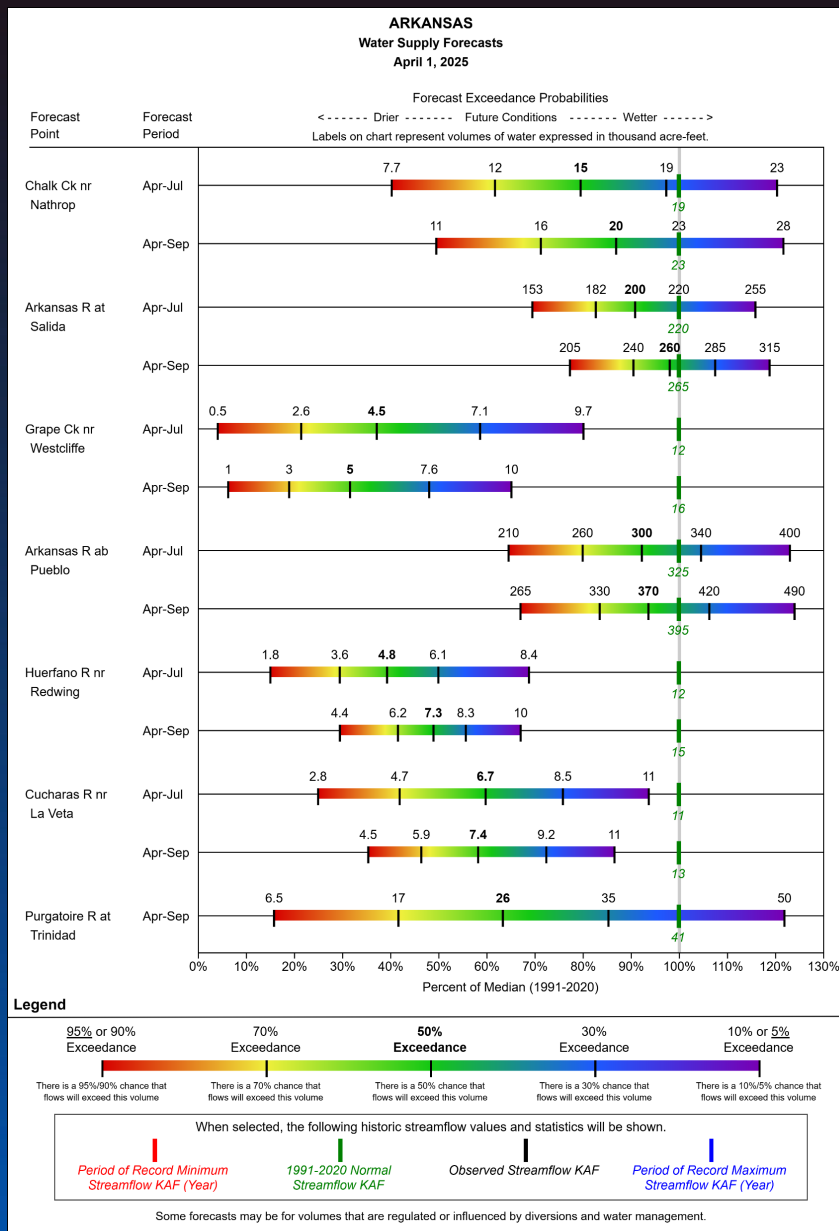
# Colorado Snow Surveys





# Colorado Snow Surveys

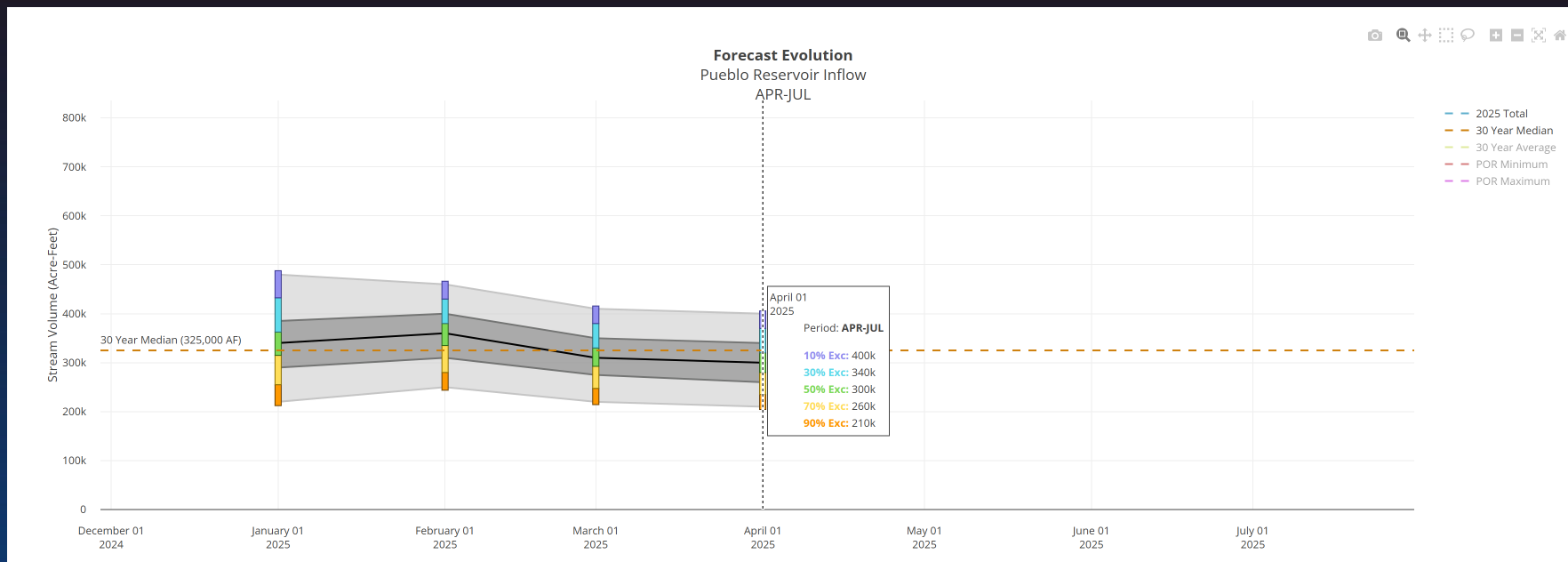




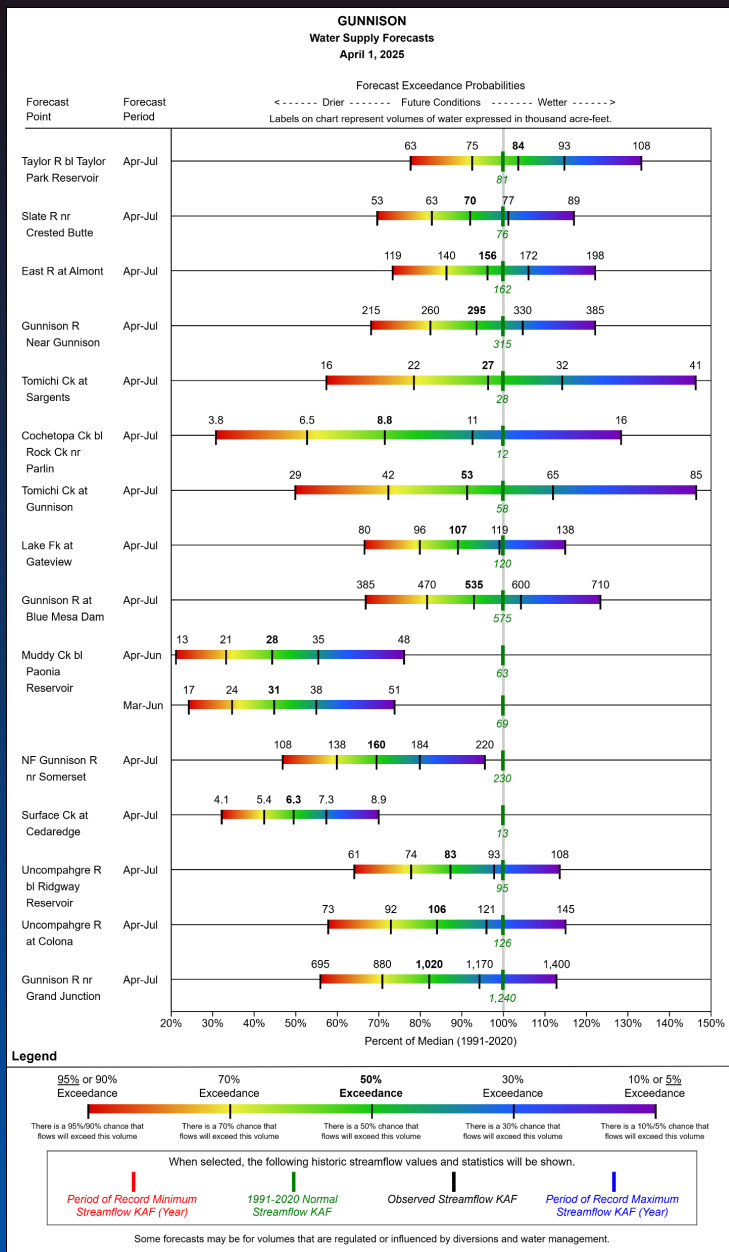




# Colorado Snow Surveys

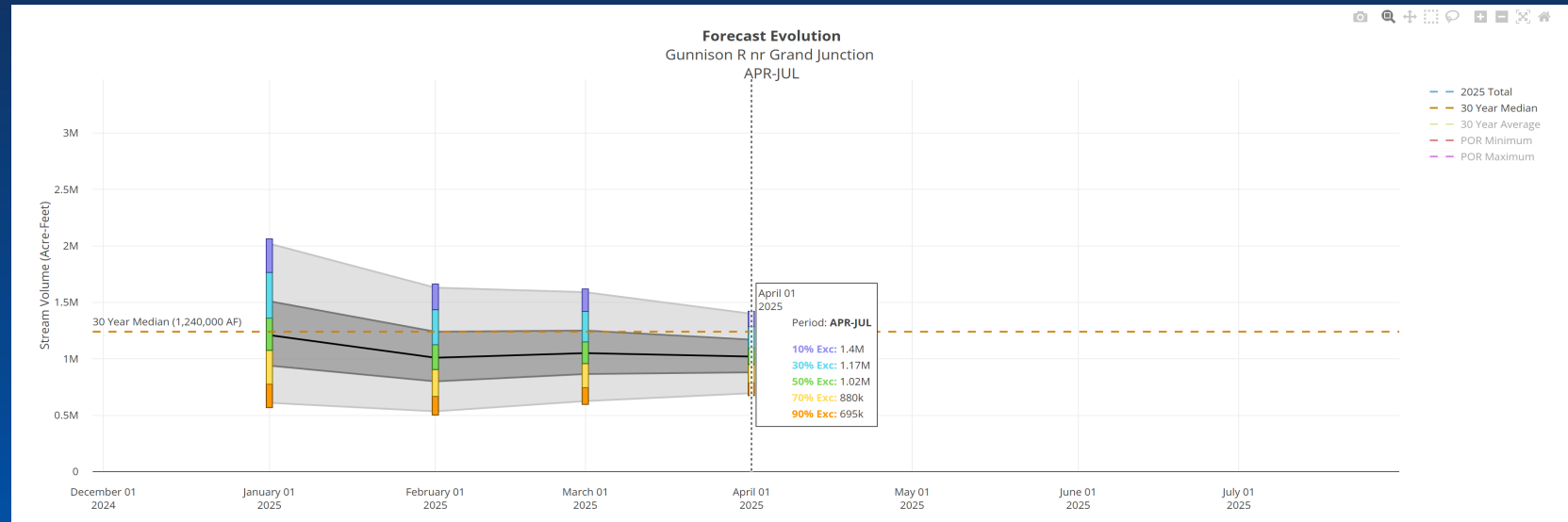
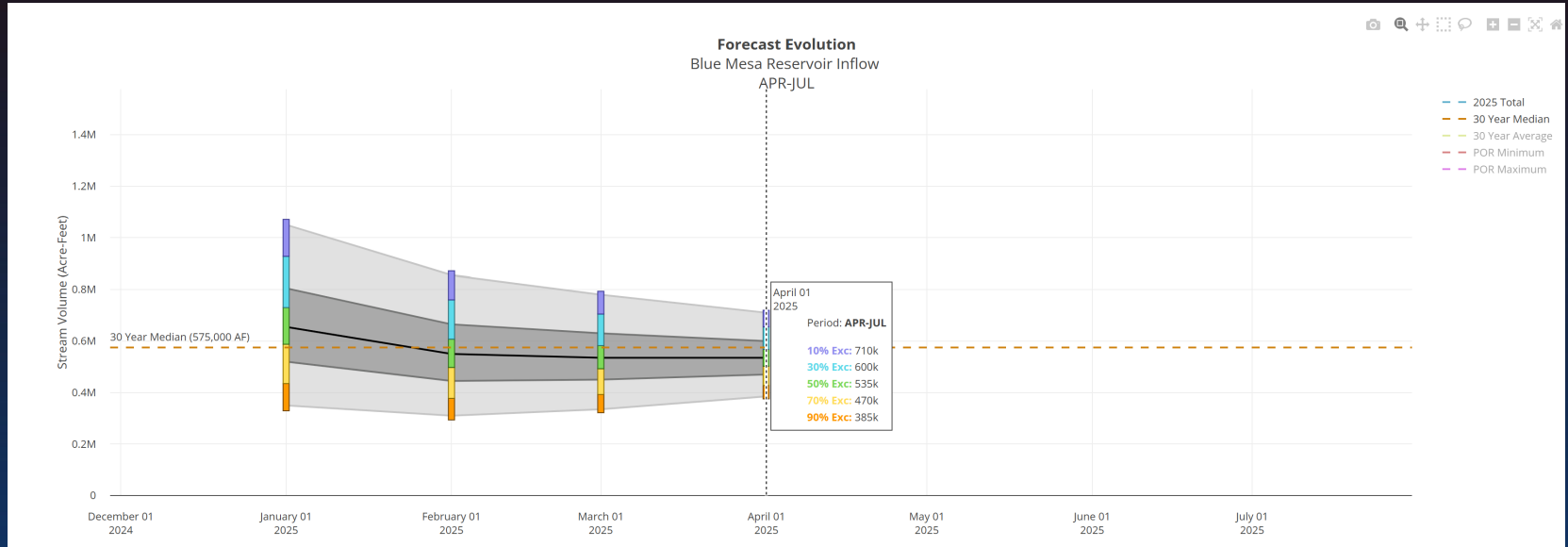


Pueblo Reservoir is at 109% of 30 yr median and 70% of storage capacity. Median streamflow forecast at Pueblo Reservoir inflow is 300 acre-feet





# Colorado Snow Surveys



## Summary

- Median statewide snow water equivalent is at 80%. March brought increased storm activity. At the end of March accelerated snowmelt is observed statewide and particularly more pronounced in southern basins due to warming spring temperatures.
- Statewide WYTD precipitation is 94% of median. Ranging from 79% in the combined SMDASJ & URG to 99% in the combined Laramie-North Platte. Month to date precipitation is 88% of median, with southern basins favored.
- Statewide reservoir storage is at 92% of median an 8% decrease from this time last year
- Soil moisture readings at both 8" and 20" depths show increased saturation in response to early melt, especially in southern basins where fall precipitation helped improve runoff efficiency. The South Platte remains an outlier with lower shallow soil moisture, likely due to dry early season conditions and faster percolation. Deeper soil layers in the South Platte have begun to recover with recent inputs.
- Statewide streamflow forecasts have slightly decreased from March to April, with the 50% exceedance probability dropping from 88% to 86%. The most notable decreases are in the SMDASJ & URG. April forecasts generally improved in the Arkansas and in northern basins.





## Non-Discrimination Statement:

In accordance with Federal civil rights law and U.S. Department of agriculture (USDA) civil rights regulations and policies, the USDA, its Agencies, offices, and employees, and institutions participating in or administering USDA programs are prohibited from discriminating based on race, color, national origin, religion, sex, gender identity (including gender expression), sexual orientation, disability, age, marital status, family/parental status, income derived from a public assistance program, political beliefs, or reprisal or retaliation for prior civil rights activity, in any program or activity conducted or funded by USDA (not all bases apply to all programs). Remedies and complaint filing deadlines vary by program or incident.

Persons with disabilities who require alternative means of communication for program information (e.g., Braille, large print, audiotape, American Sign Language, etc.) should contact the responsible Agency or USDA 's TARGET Center at (202) 720-2600 (voice and TTY) or contact USDA through the Federal Relay Service at (800) 877-8339. Additionally, program information may be made available in languages other than English.

To file a program discrimination complaint, complete the USDA Program Discrimination Complaint Form, AD-3027, found online at [How to File a Program Discrimination Complaint](#) and at any USDA office or write a letter addressed to USDA and provide in the letter all of the information requested in the form. To request a copy of the complaint form, call (866) 632-9992. Submit your completed form or letter to USDA by: (1) mail: U.S. Department of Agriculture, Office of the Assistant Secretary for Civil Rights, 1400 Independence Avenue, SW, Washington, D.C. 20250-9410; (2) fax: (202) 690-7442; or (3) email: [program.intake@usda.gov](mailto:program.intake@usda.gov).