



United States Department of Agriculture

Colorado Snow Surveys

# Water Conditions Monitoring Committee Meeting March 25<sup>th</sup>, 2025

## NRCS Snow Survey and Water Supply Forecasting Program

Brian Domonkos

Hydrologist

[Brian.Domonkos@usda.gov](mailto:Brian.Domonkos@usda.gov)

720-544-2853

<http://www.nrcs.usda.gov/wps/portal/nrcs/main/co/snow/>



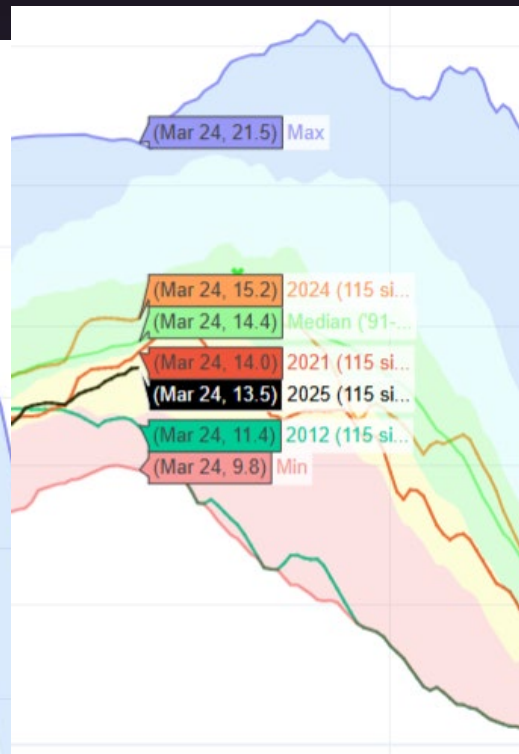
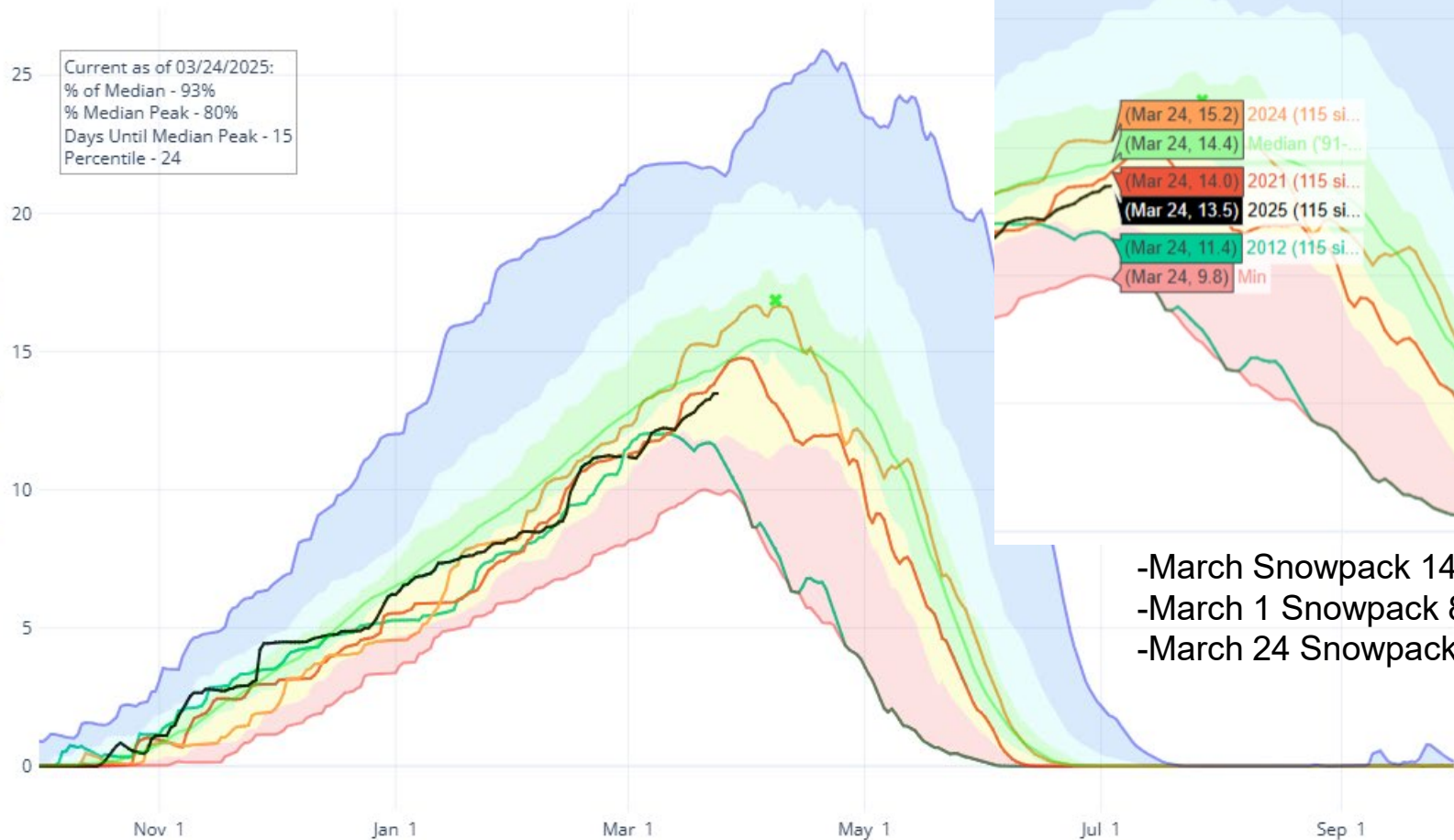
United States Department of Agriculture

# Colorado Snow Surveys

## Snowpack

## SNOW WATER EQUIVALENT IN STATE OF COLORADO

Current as of 03/24/2025:  
 % of Median - 93%  
 % Median Peak - 80%  
 Days Until Median Peak - 15  
 Percentile - 24



- ✱ Median Peak SWE
- Max
- Median ('91-'20)
- Min
- Stats. Shading
- 2025 (115 sites)
- 2024 (115 sites)
- 2021 (115 sites)
- 2012 (115 sites)

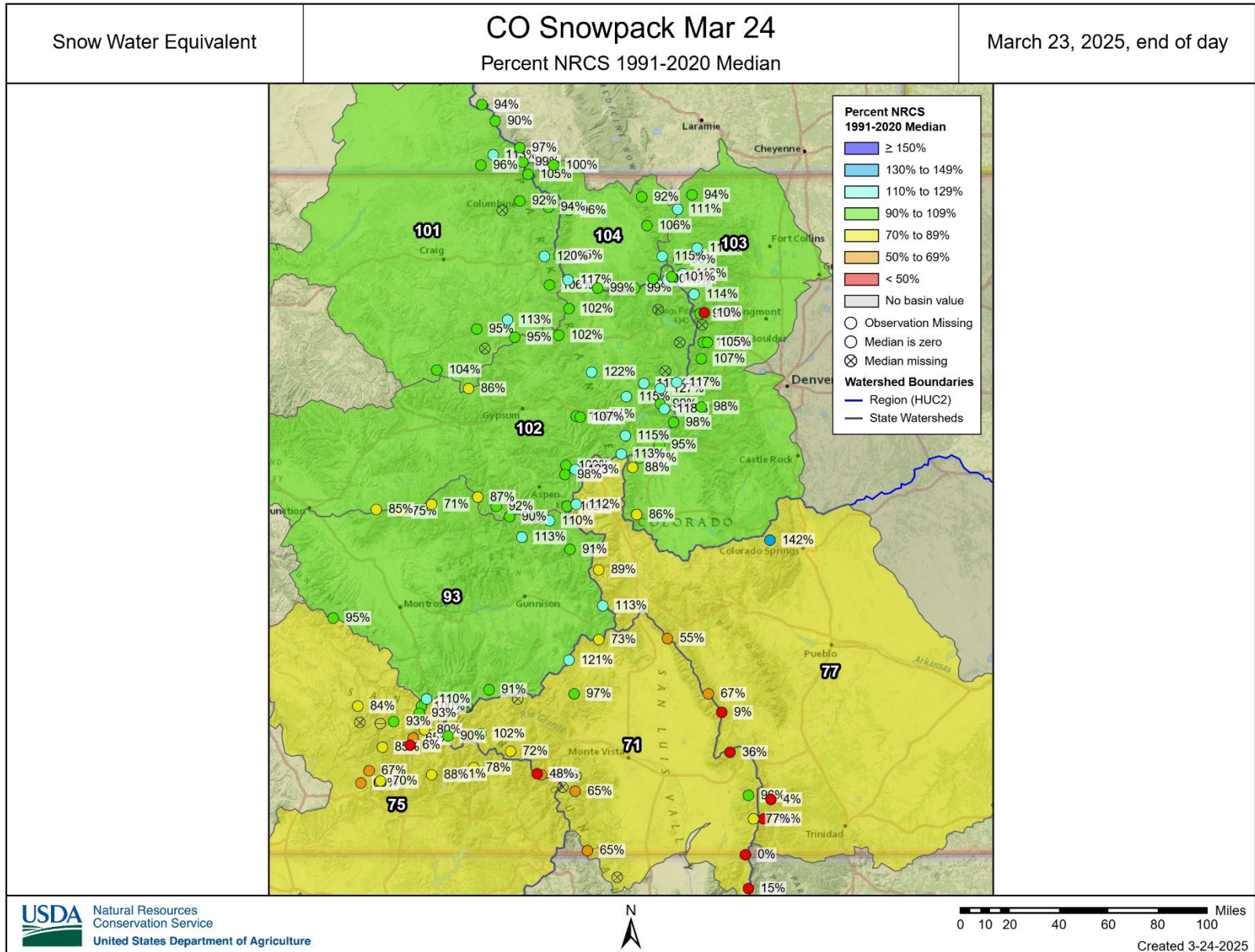
- March Snowpack 144% of median
- March 1 Snowpack 88% median
- March 24 Snowpack 93% median



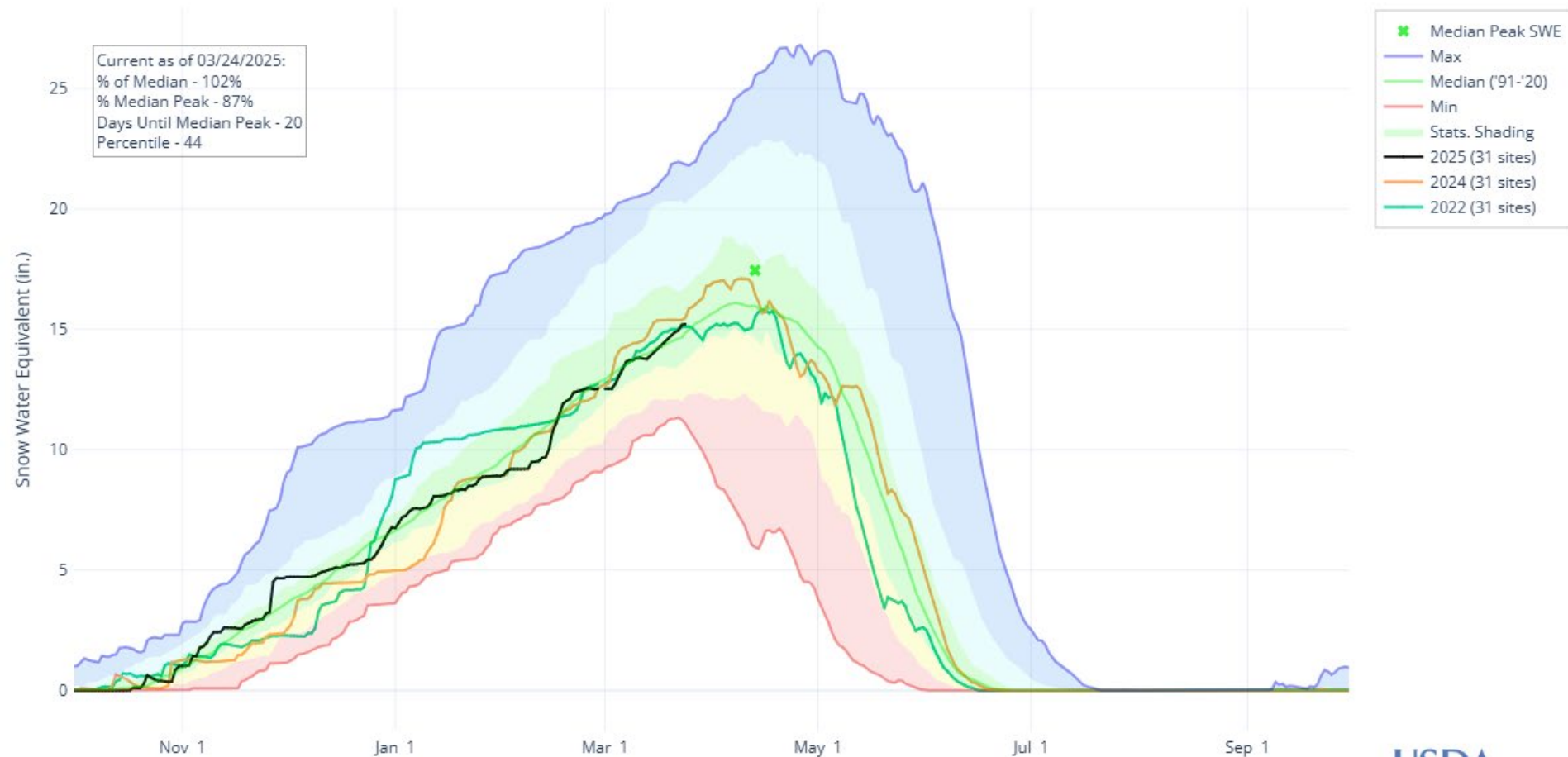
United States Department of Agriculture

# Colorado Snow Surveys

Snowpack as of March 24<sup>th</sup>

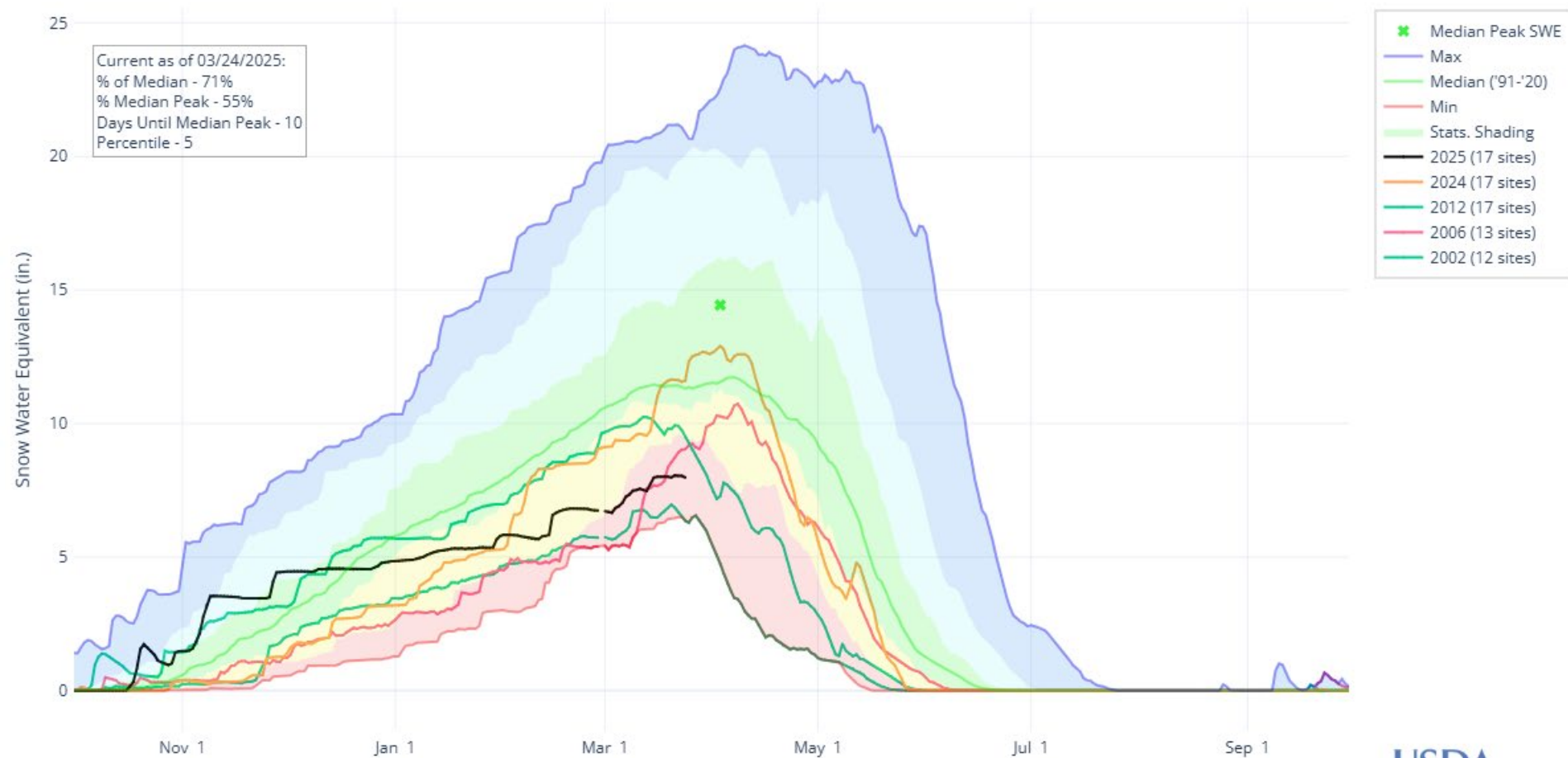


## SNOW WATER EQUIVALENT IN COLORADO HEADWATERS

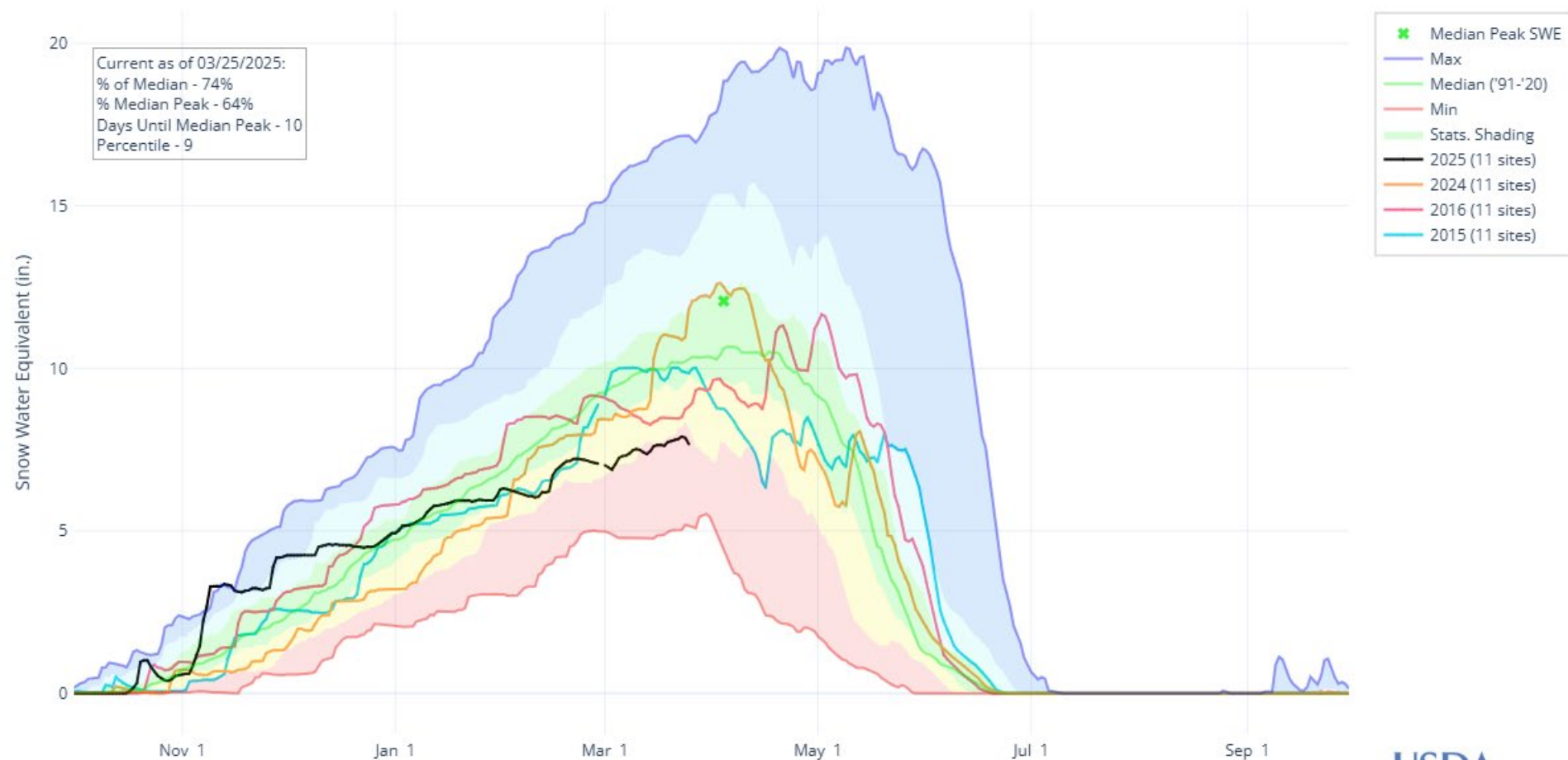




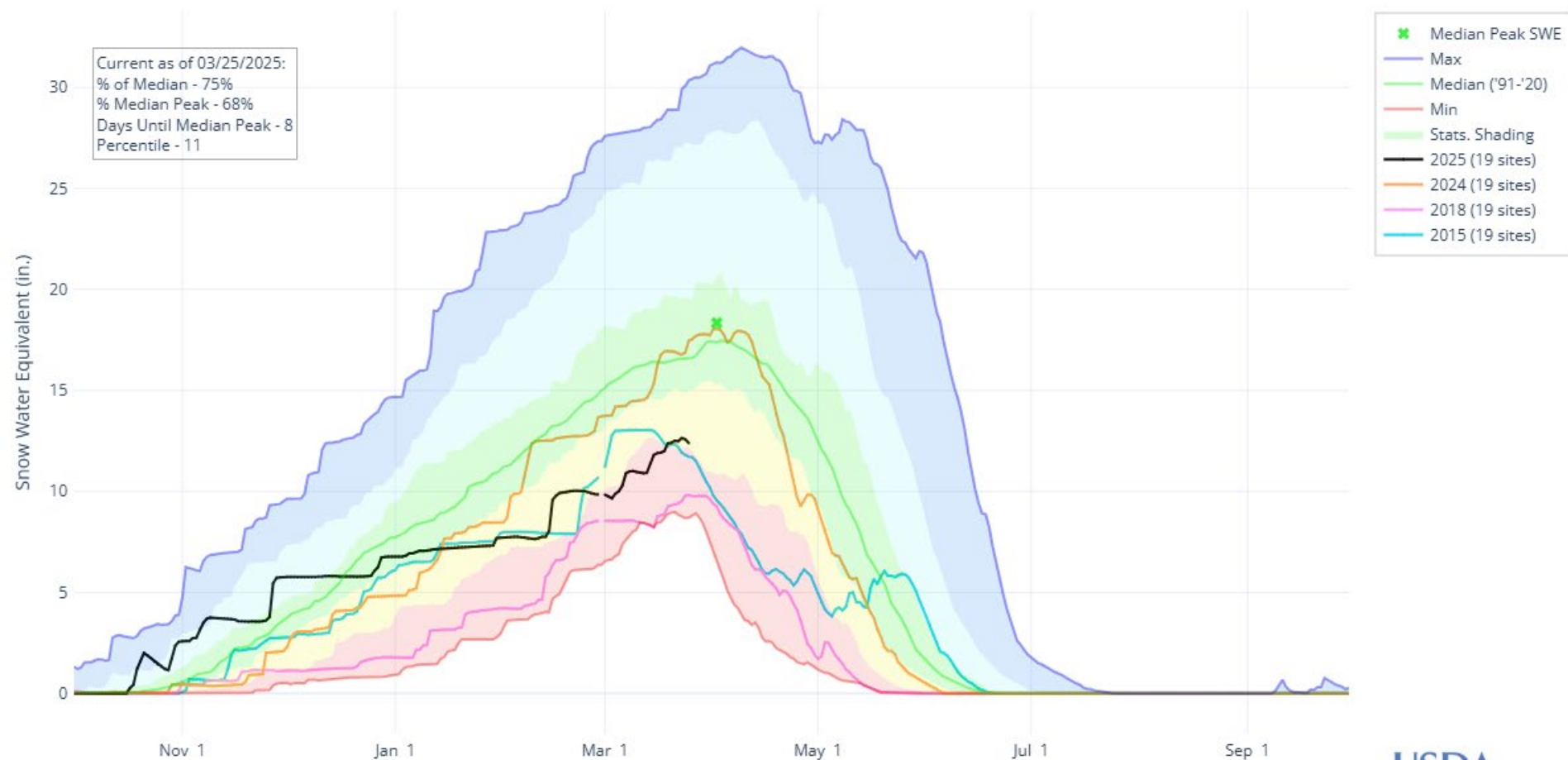
## SNOW WATER EQUIVALENT IN UPPER RIO GRANDE



## SNOW WATER EQUIVALENT IN ARKANSAS



## SNOW WATER EQUIVALENT IN SAN MIGUEL-DOLORES-ANIMAS-SAN JUAN







United States Department of Agriculture

# Colorado Snow Surveys

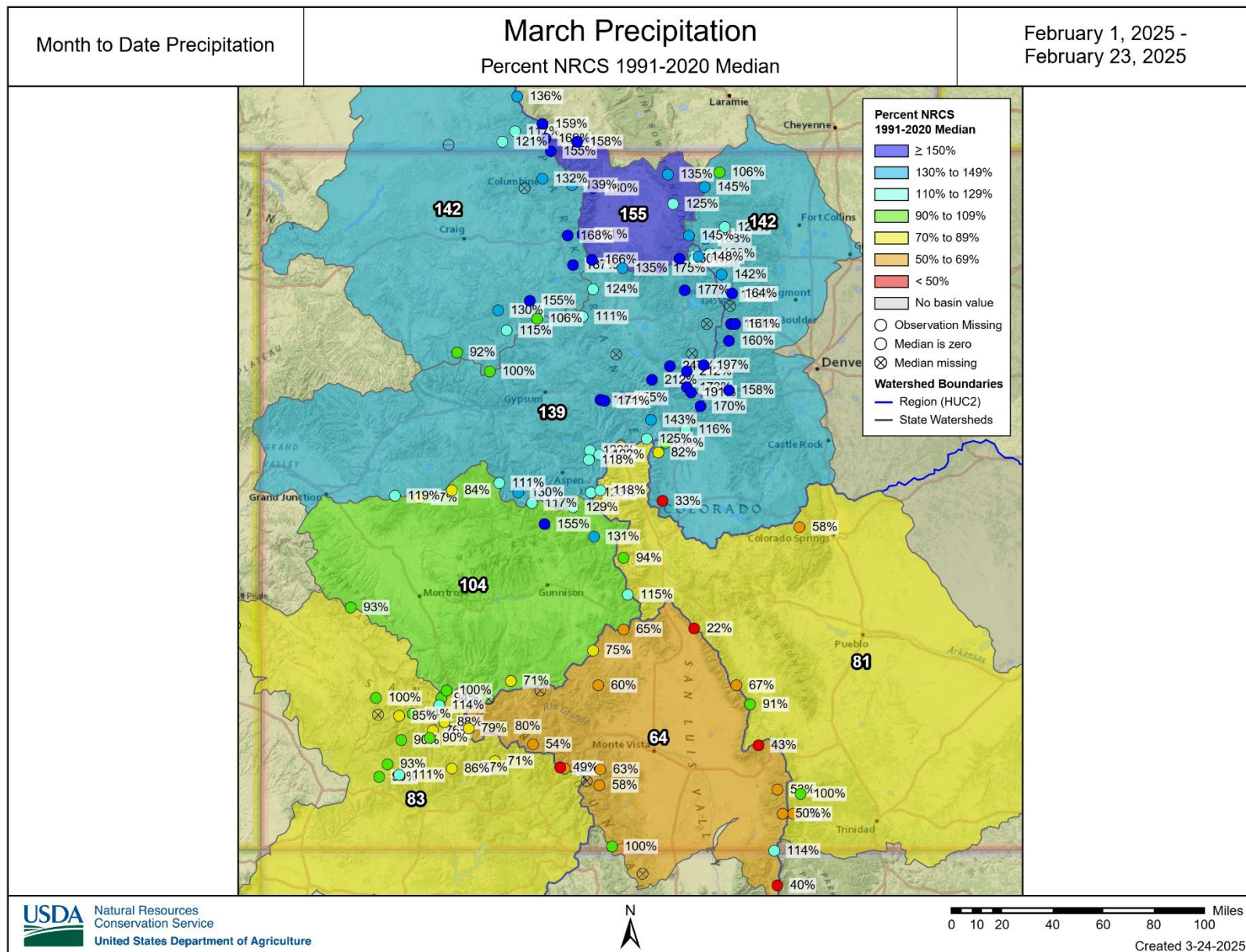
## Precipitation



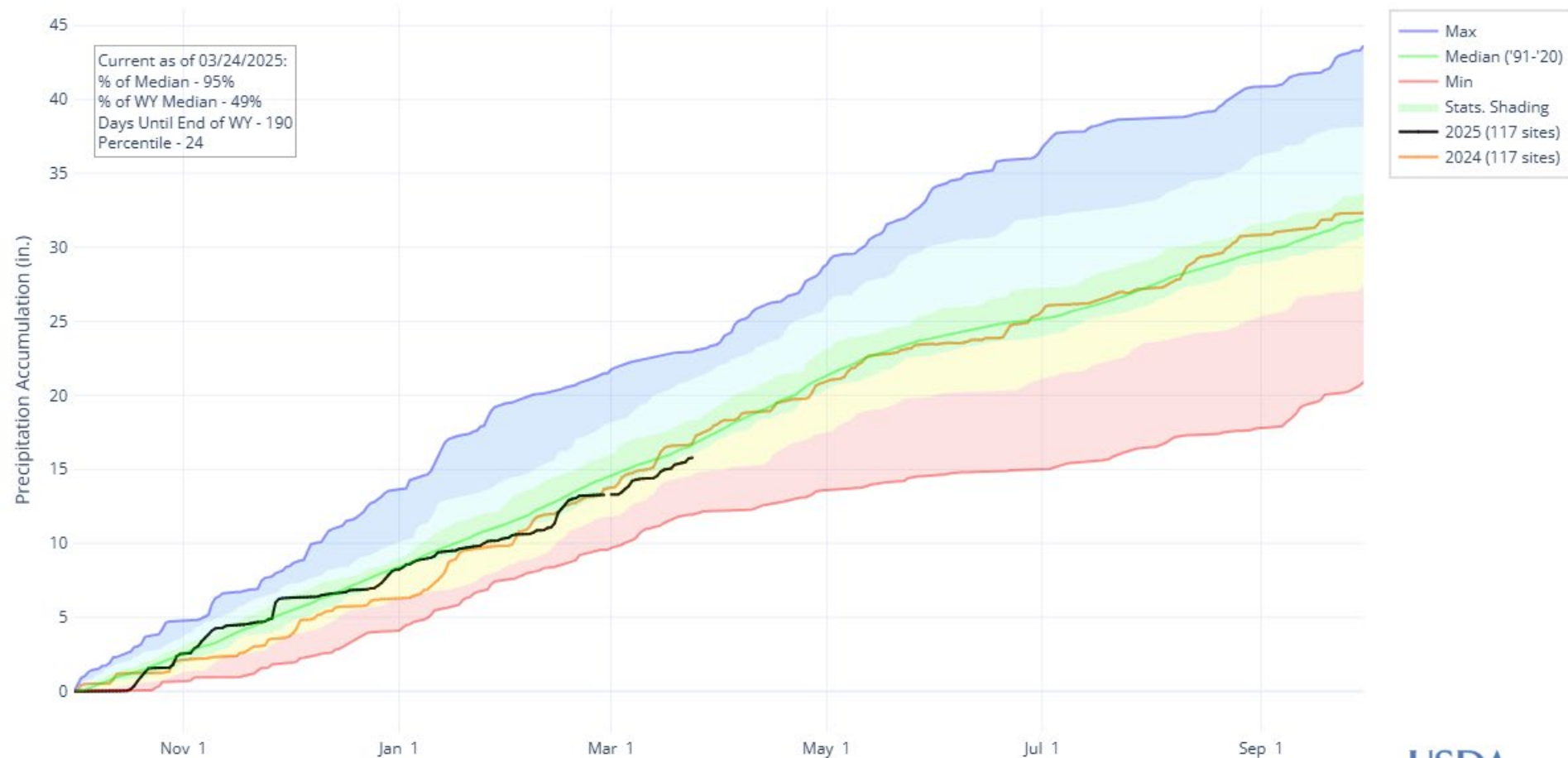
United States Department of Agriculture

# Colorado Snow Surveys

## March Precipitation Accumulation



## PRECIPITATION ACCUMULATION IN STATE OF COLORADO







United States Department of Agriculture

# Colorado Snow Surveys

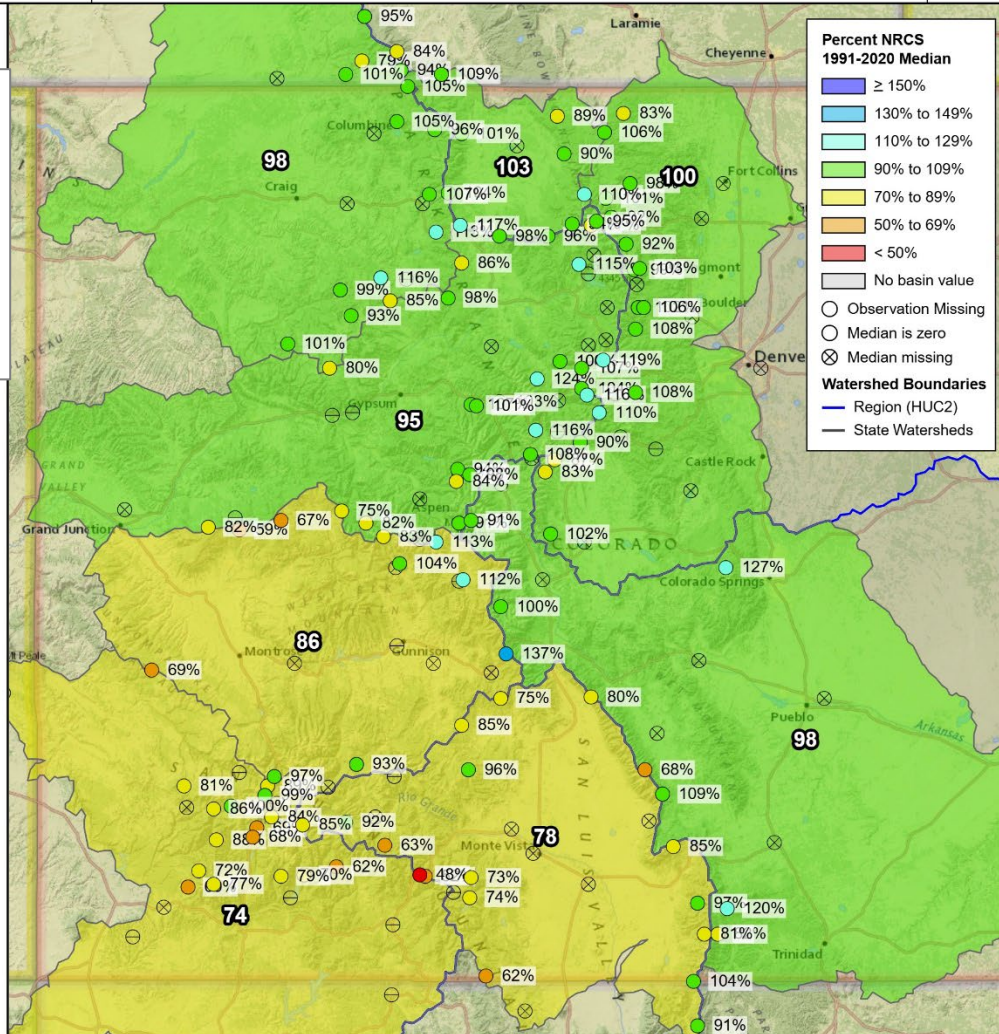
WY25 Precipitation to Date

Water Year to Date Precipitation

Statewide Precip Mar 1  
Percent NRCS 1991-2020 Median

October 1, 2024 -  
February 28, 2025

Statewide  
Precipitation  
is 95% of  
median  
on 3/24/2025



Natural Resources  
Conservation Service

United States Department of Agriculture



0 10 20 40 60 80 100 Miles

Created 3-24-2025

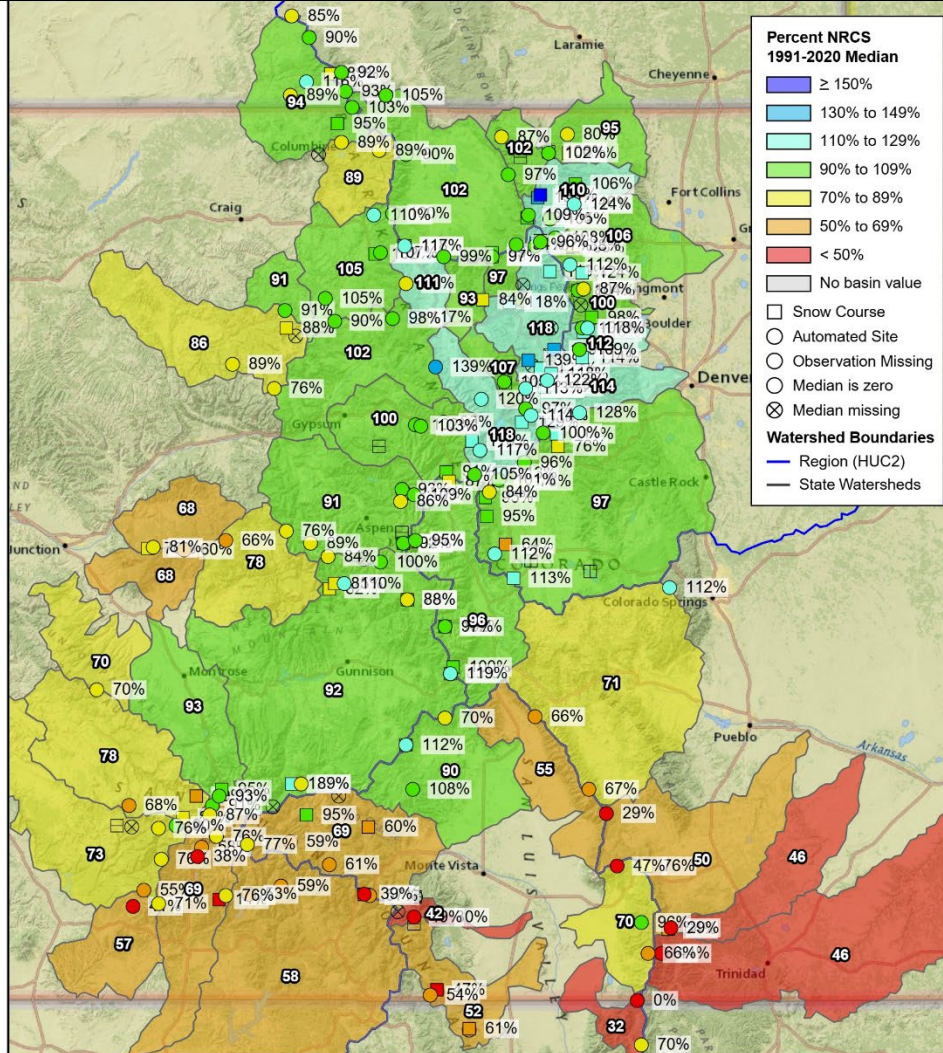


Snow Water Equivalent

## CO SWE Minor Basins

Percent NRCS 1991-2020 Median

End of February, 2025

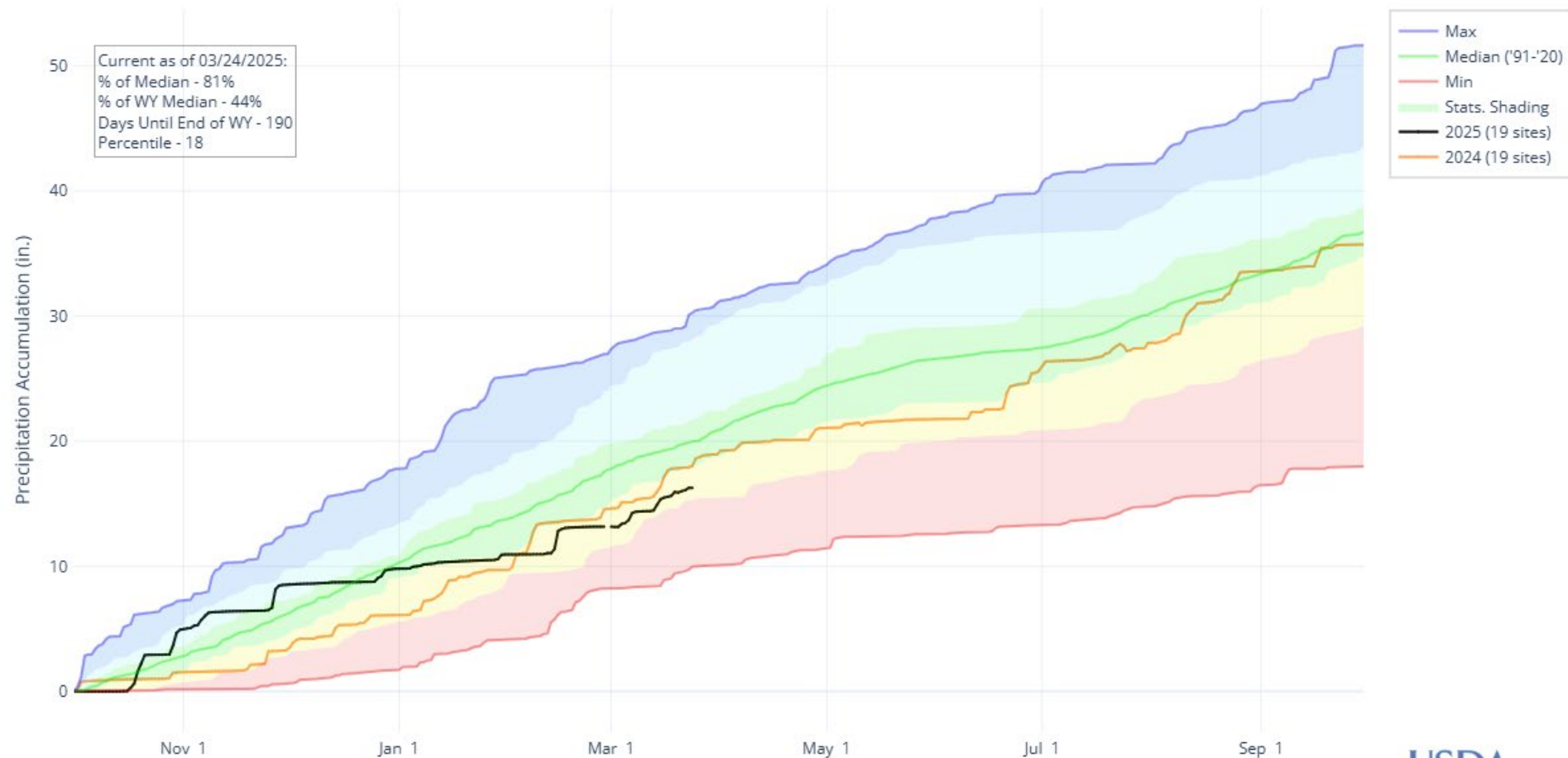






# Colorado Snow Surveys

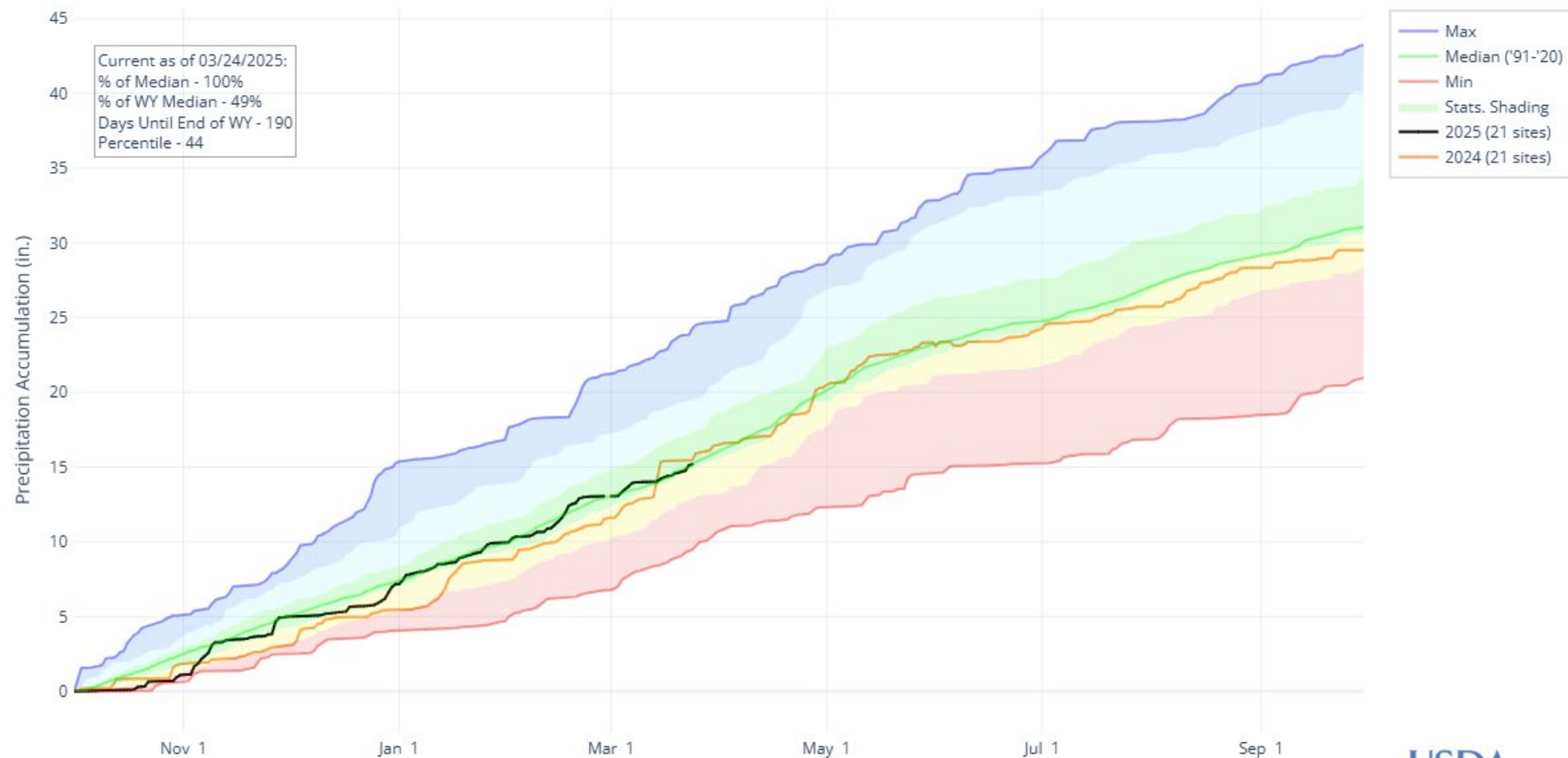
## PRECIPITATION ACCUMULATION IN SAN MIGUEL-DOLORES-ANIMAS-SAN JUAN





# Colorado Snow Surveys

## PRECIPITATION ACCUMULATION IN SOUTH PLATTE

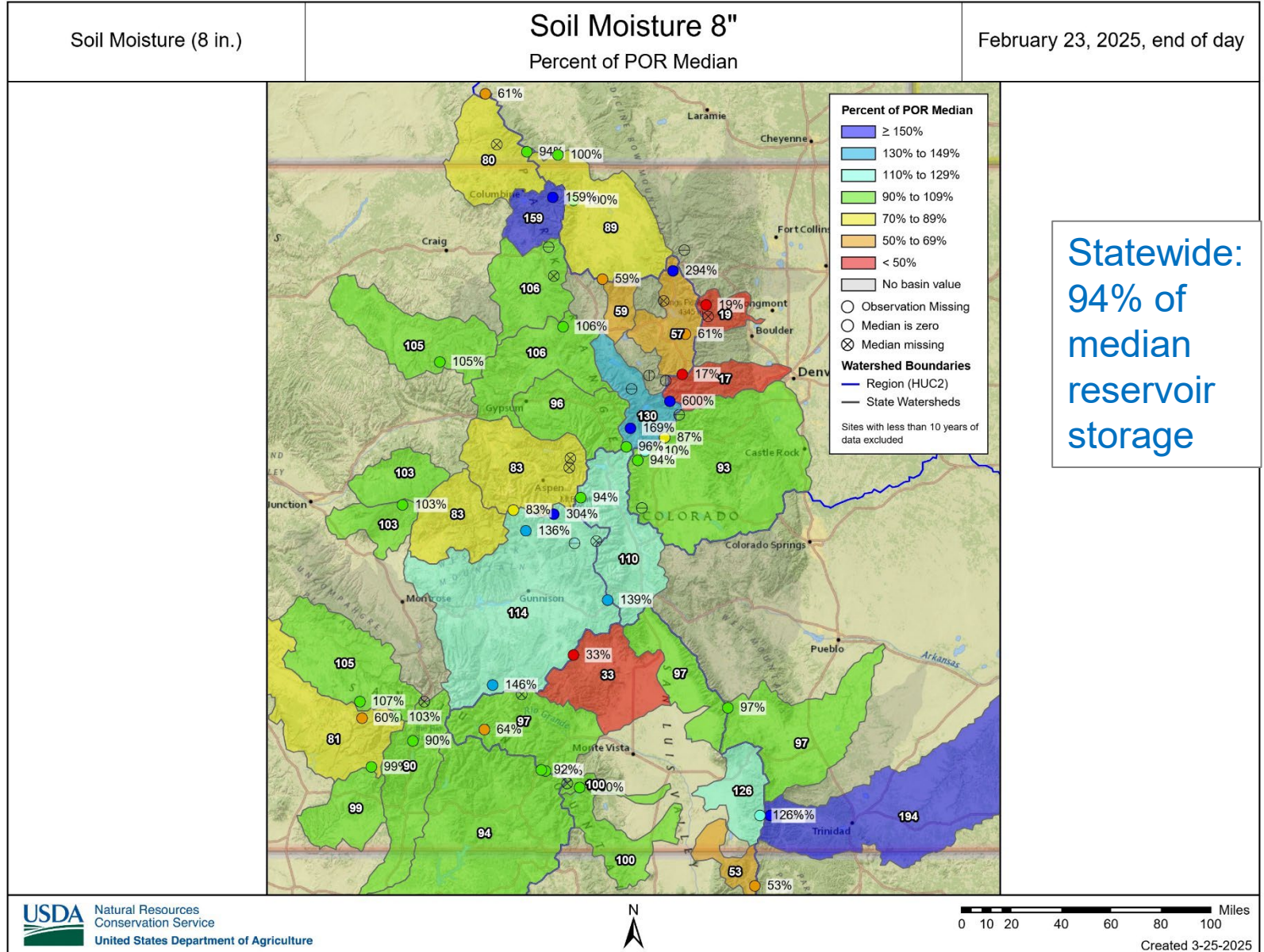




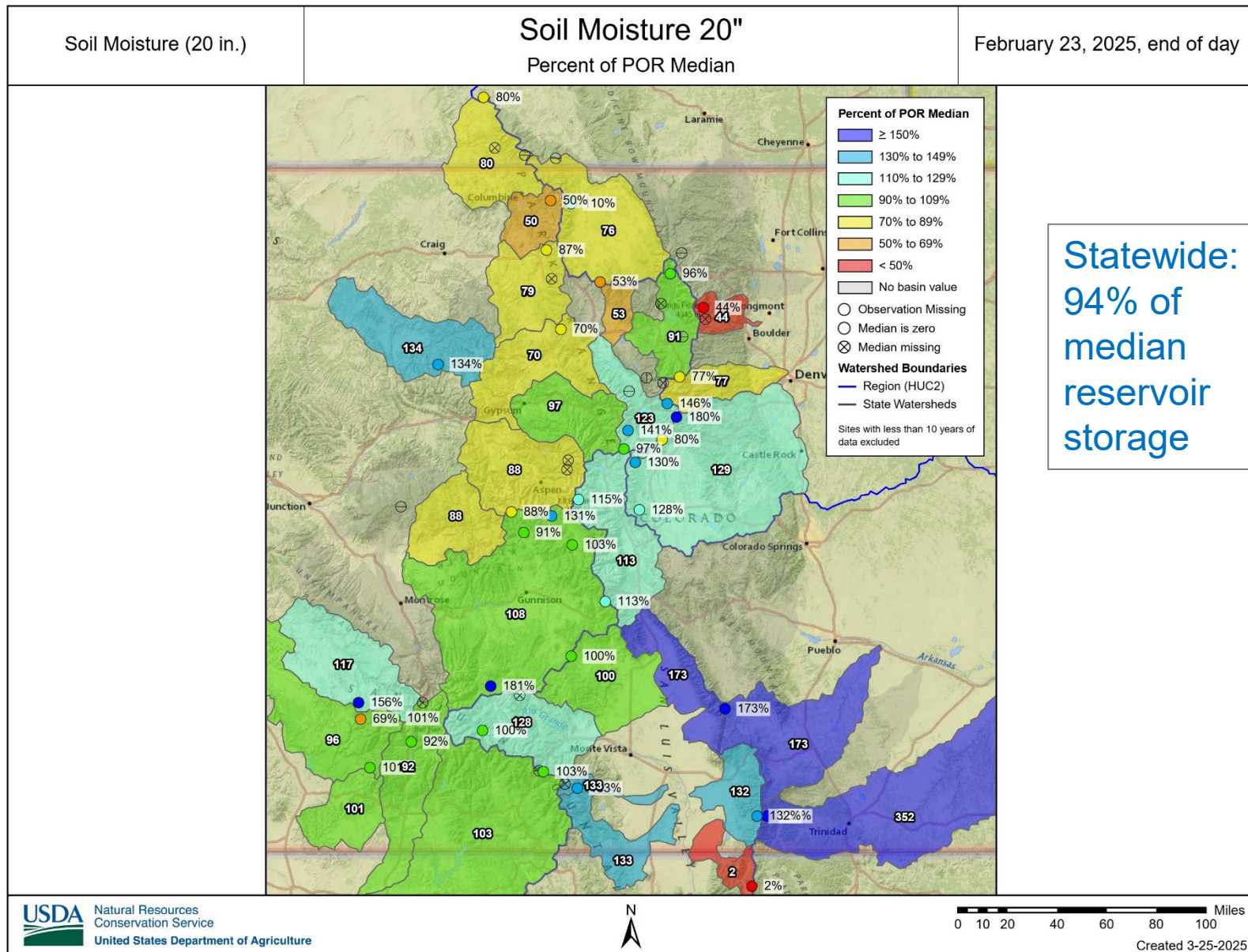
United States Department of Agriculture

# Colorado Snow Surveys

## Soil Moisture







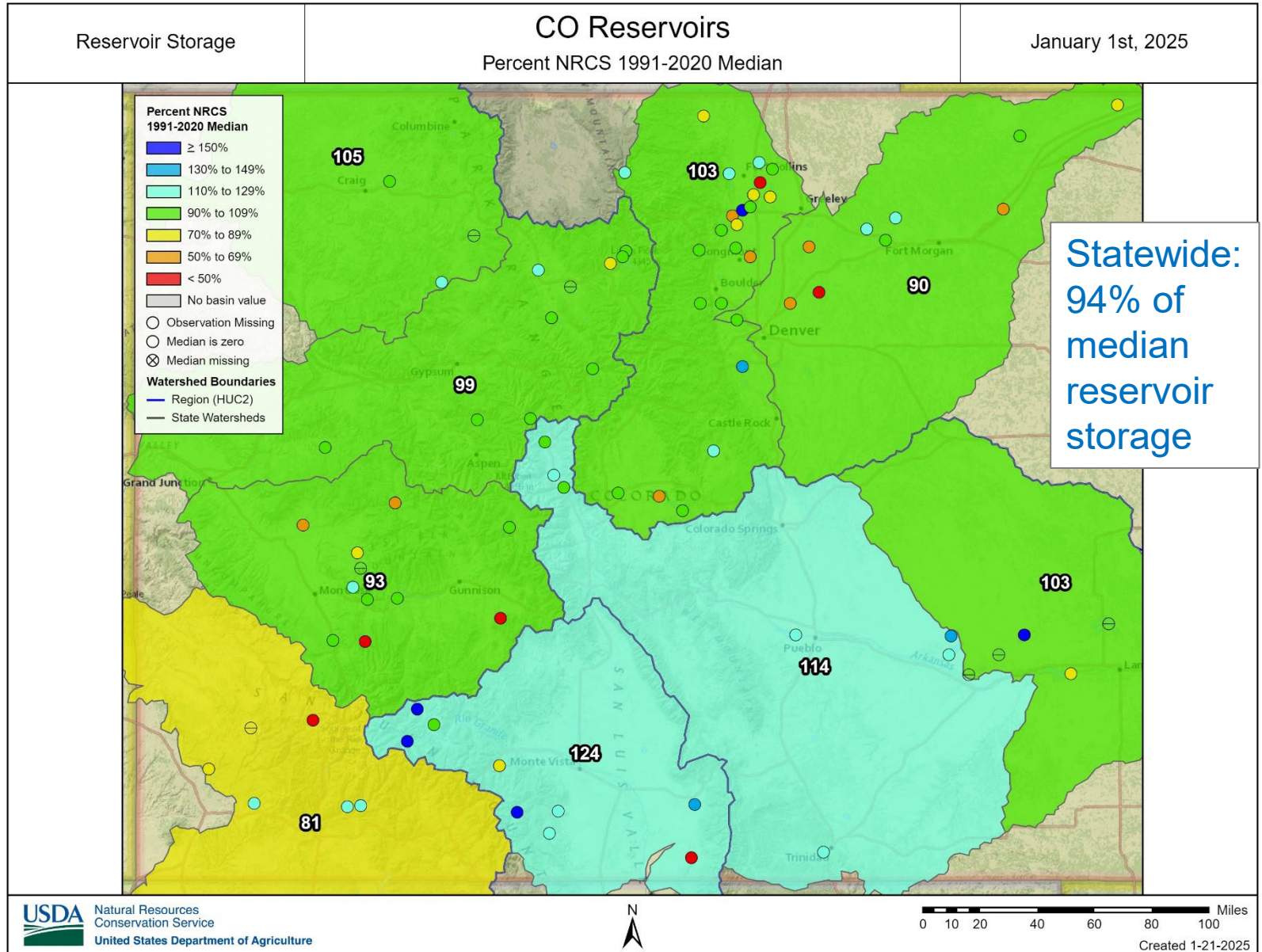




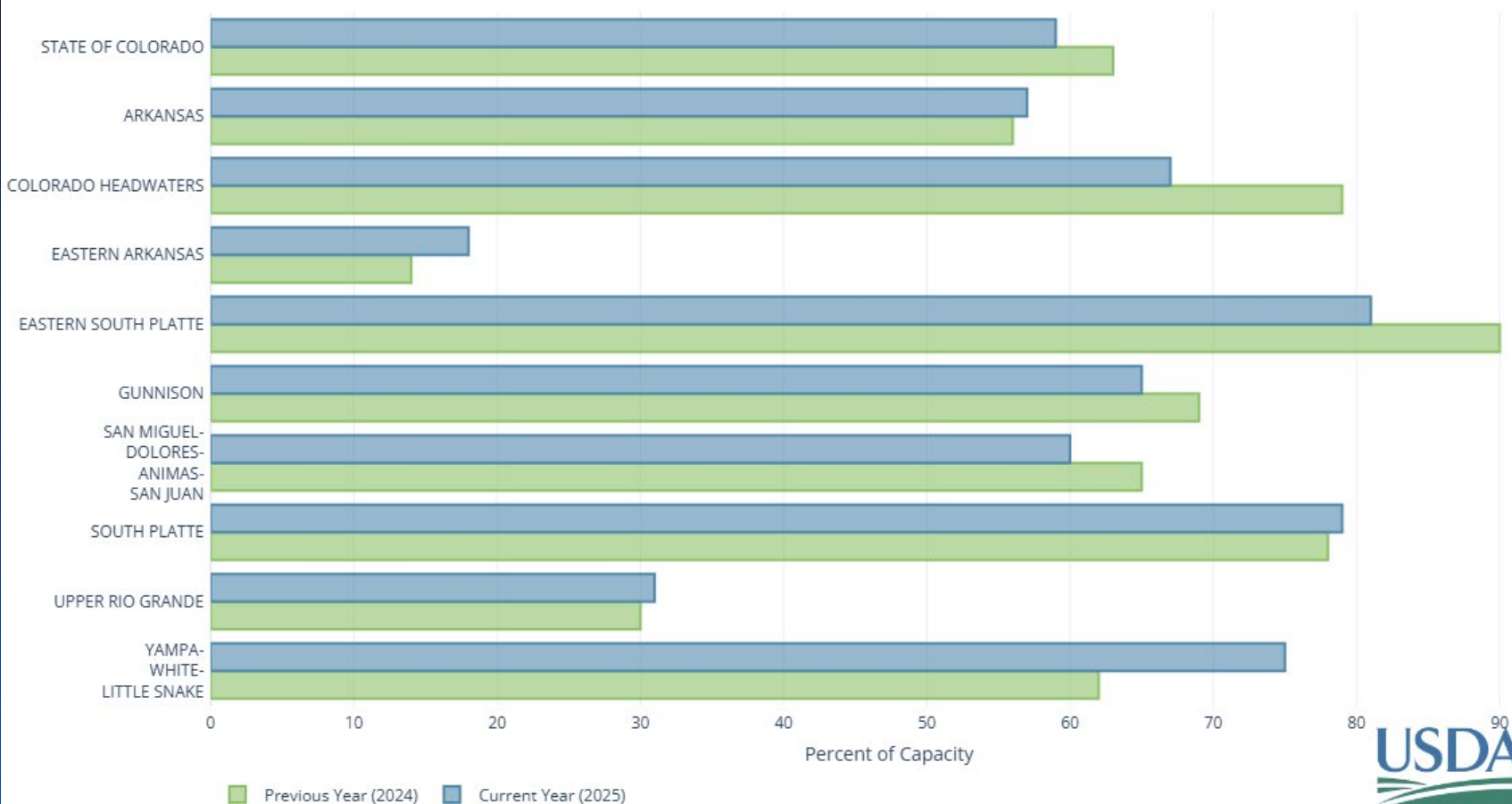
United States Department of Agriculture

# Colorado Snow Surveys

## Reservoirs

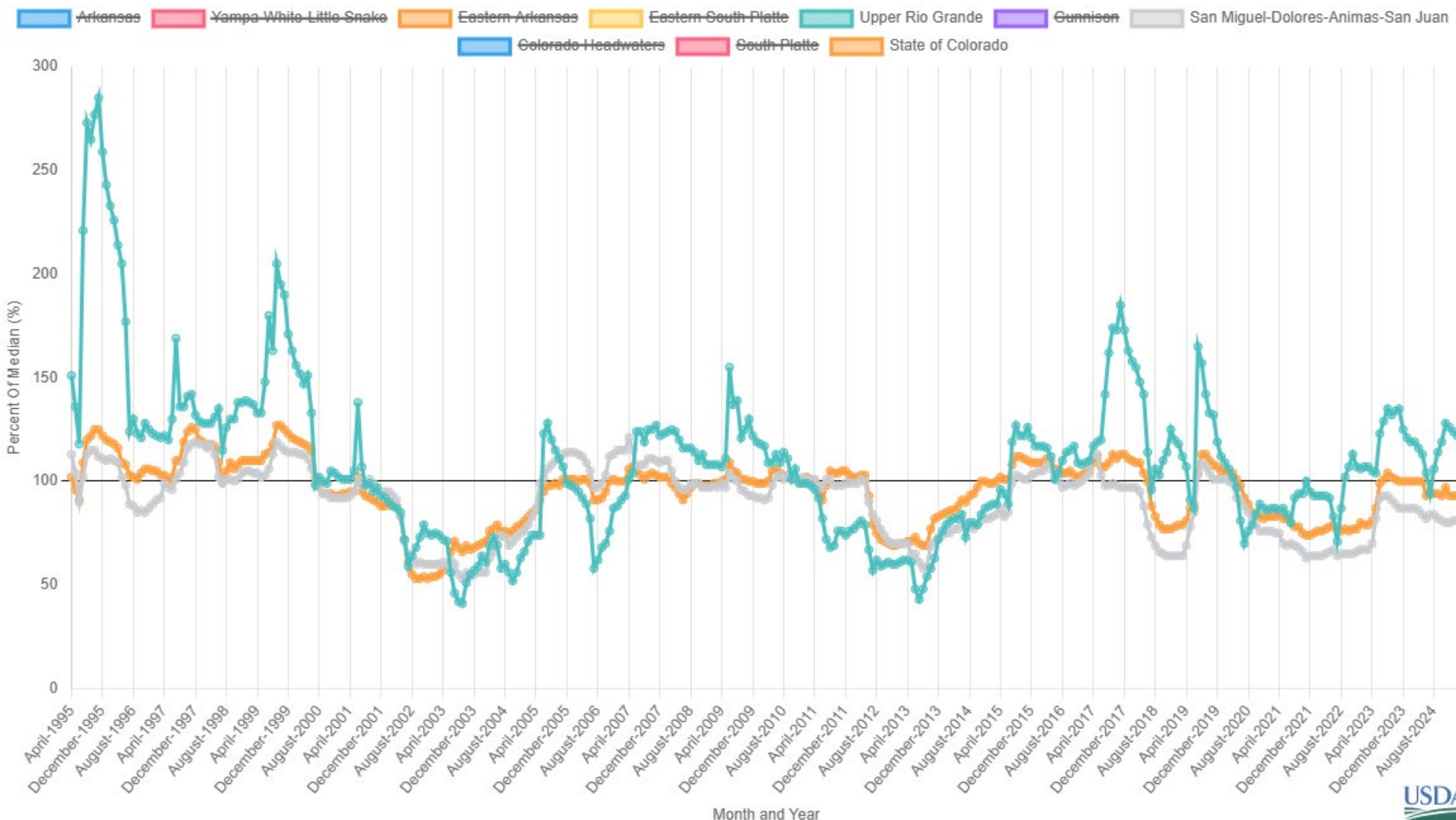


RESERVOIR STORAGE IN COLORADO  
END OF FEBRUARY 2025



## Colorado Statewide Reservoir Storage

Colorado Percent Of Median Timeseries Plot





United States Department of Agriculture

# Colorado Snow Surveys

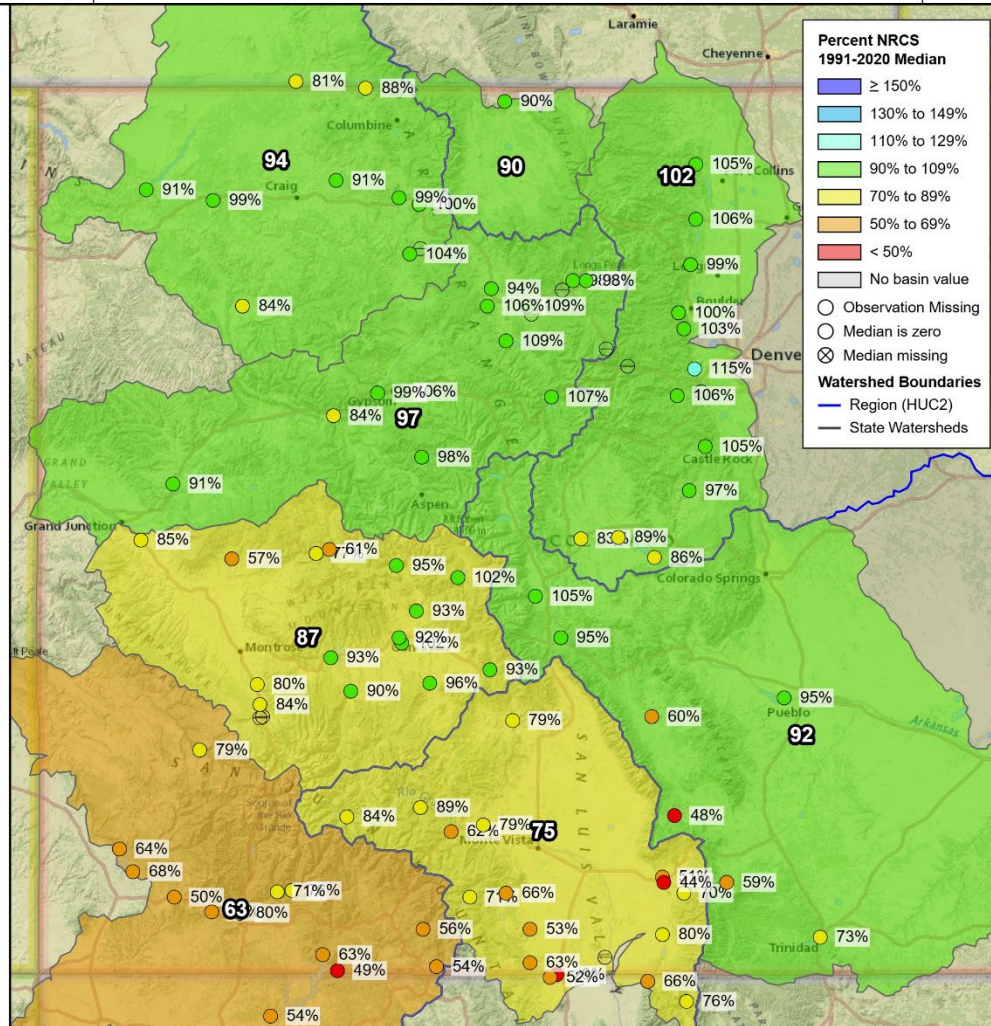
## Streamflow Forecasts



Streamflow Forecast Volume,  
50% Exceedance Probability

Colorado Mar 1 Fcsts  
Percent NRCS 1991-2020 Median

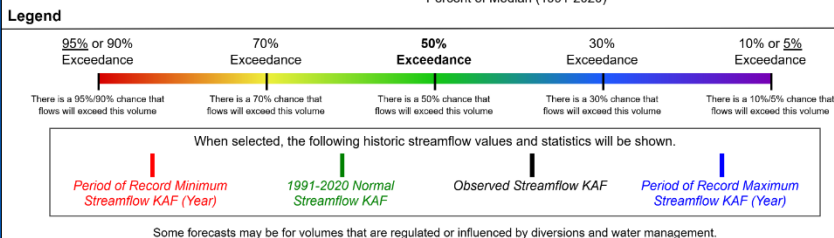
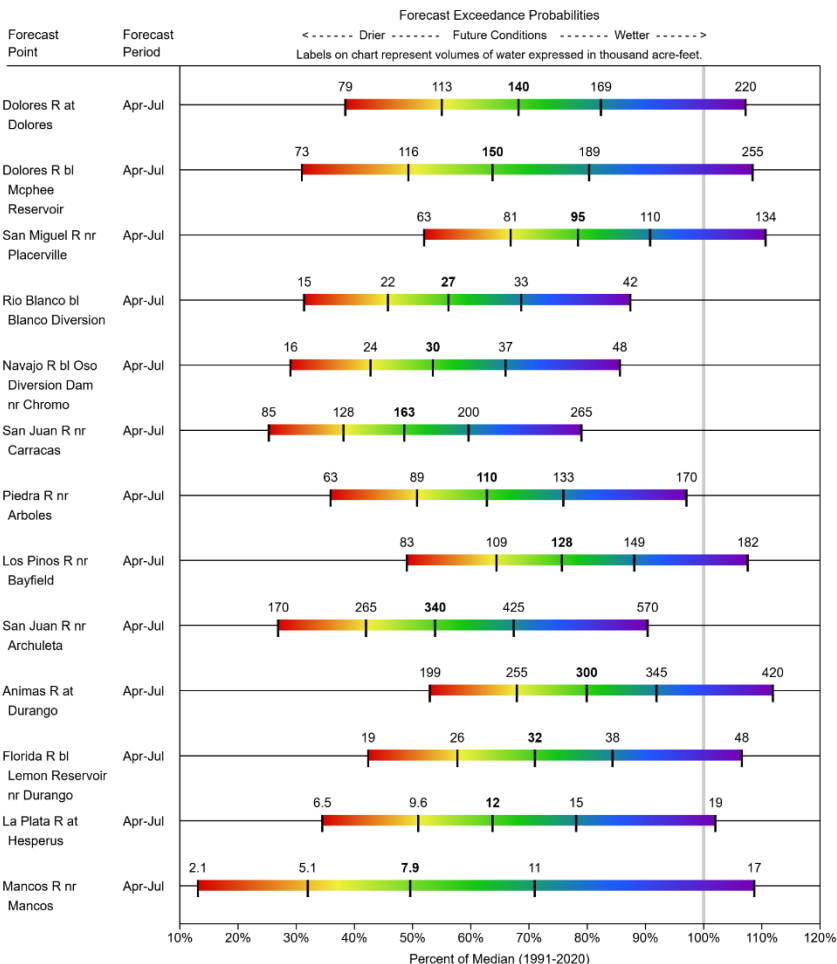
Primary Period, March 1, 2025



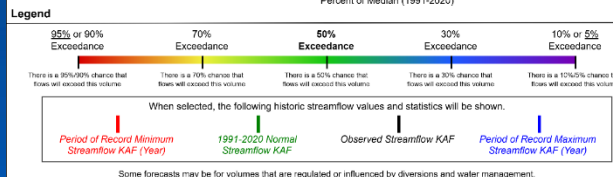
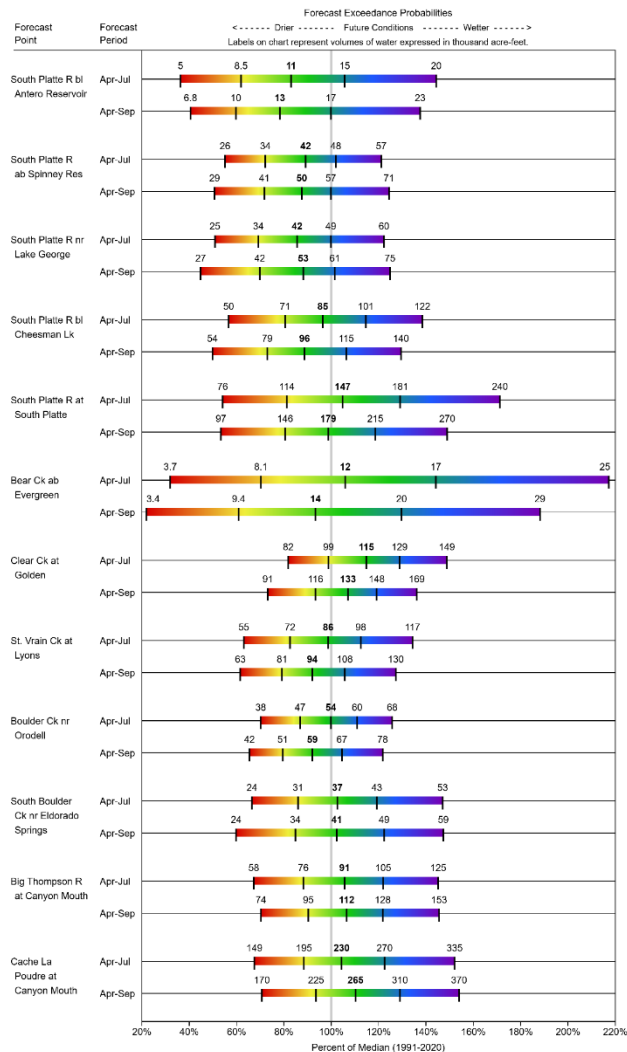


# Colorado Snow Surveys

## SAN MIGUEL-DOLORES-ANIMAS-SAN JUAN Water Supply Forecasts March 1, 2025



## SOUTH PLATTE Water Supply Forecasts March 1, 2025



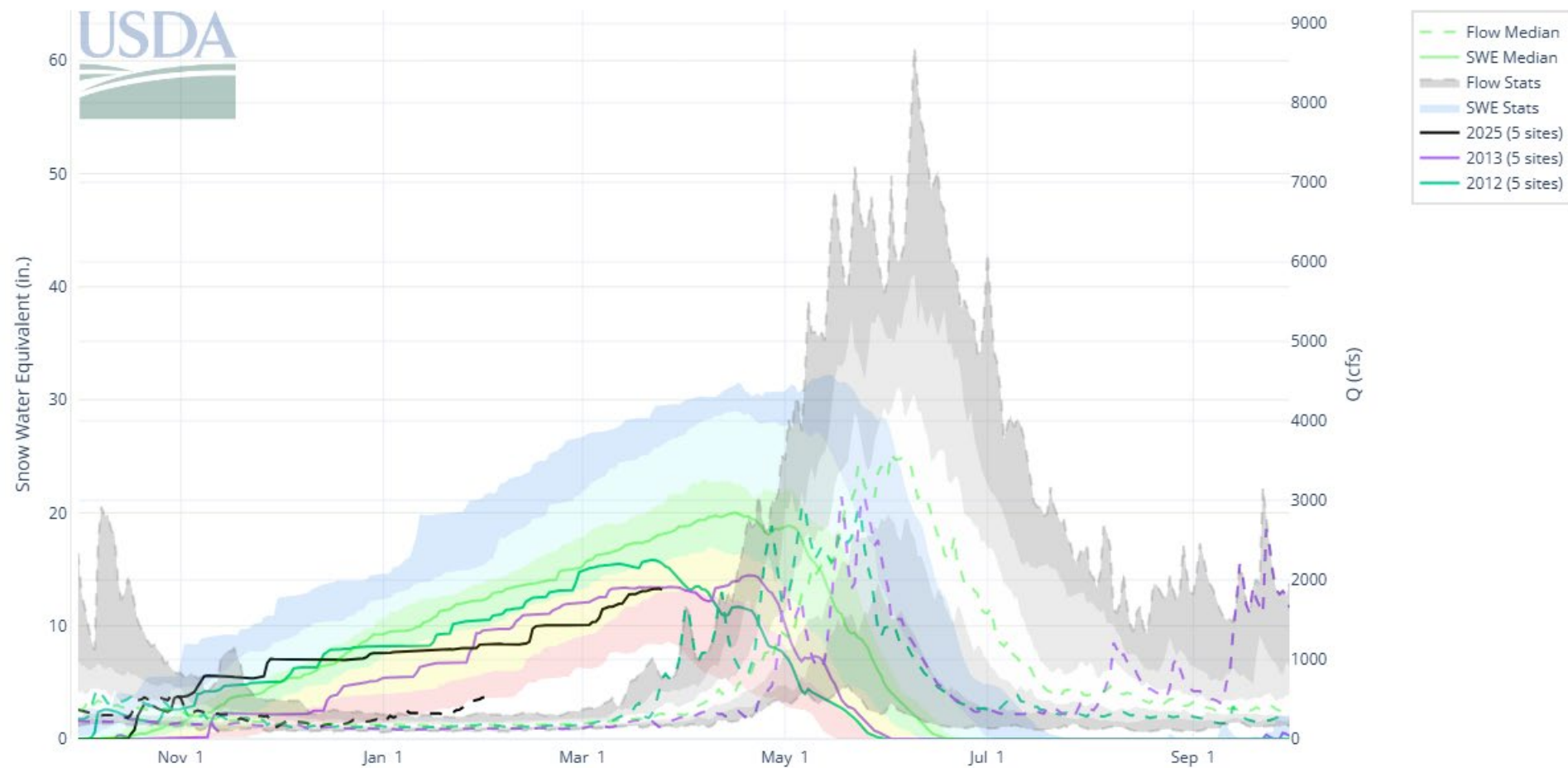


United States Department of Agriculture

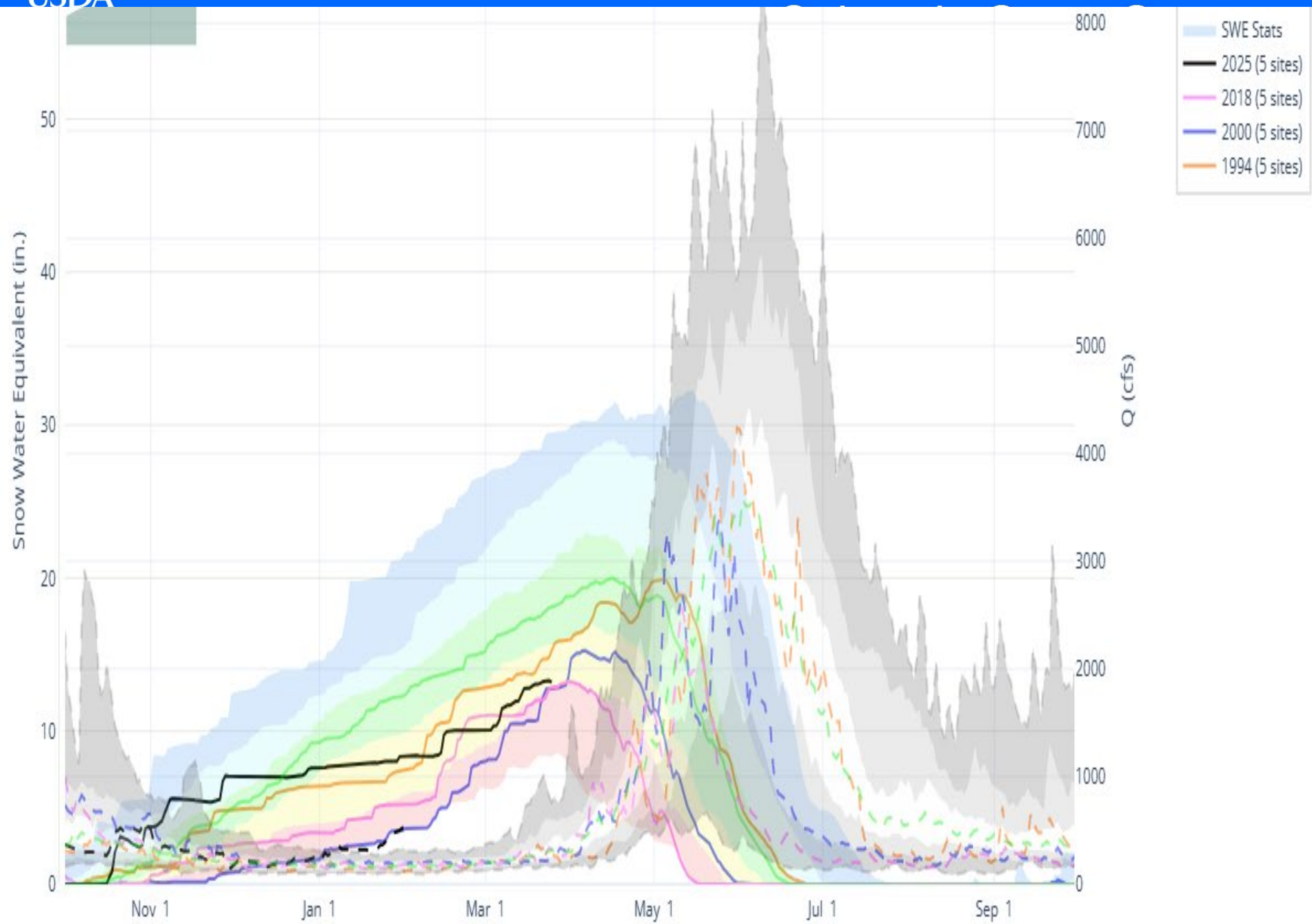
# Colorado Snow Surveys

## Snow to Runoff Relationships

Rio Grande nr Del Norte Snow to Flow Plot

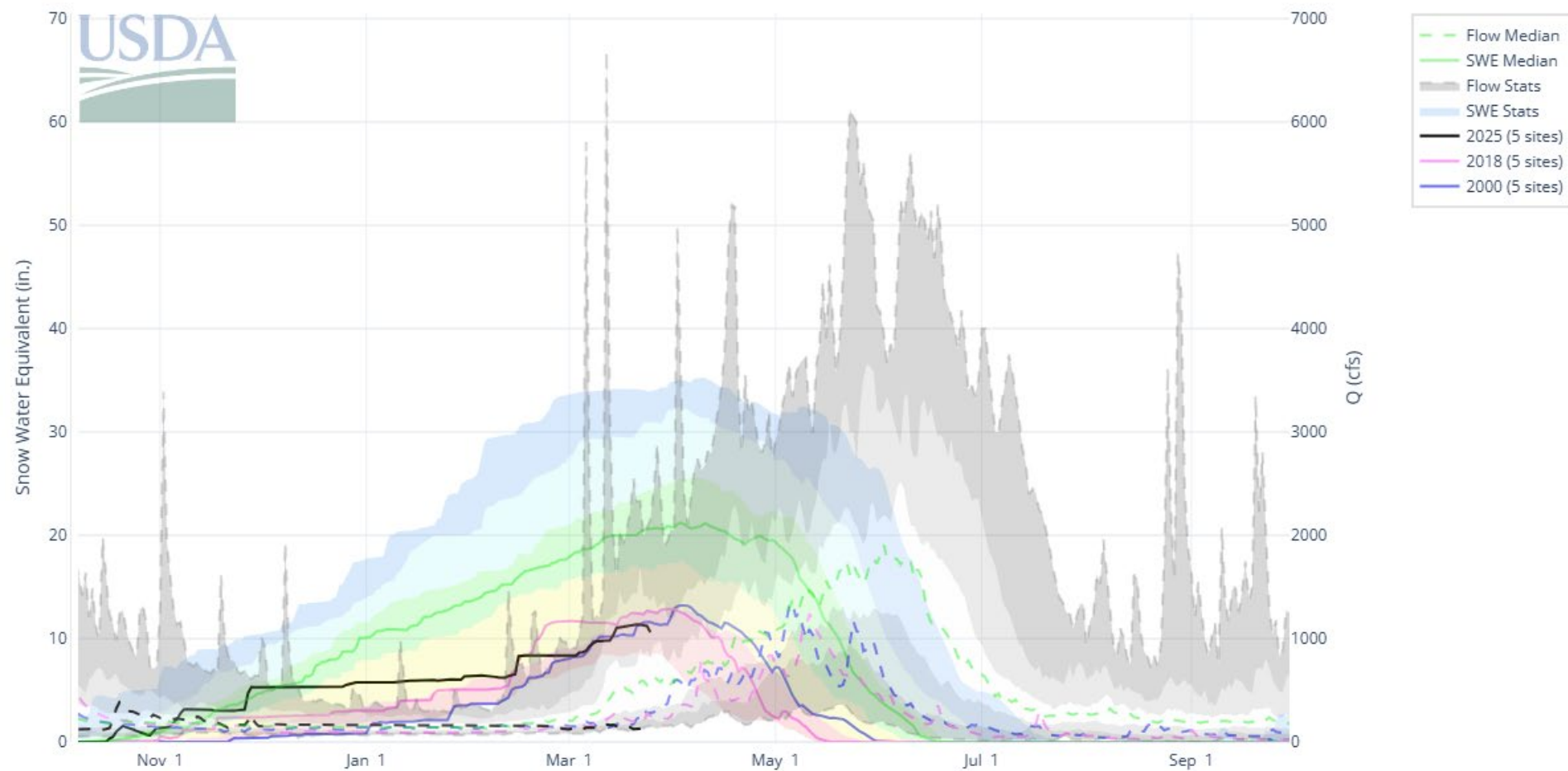




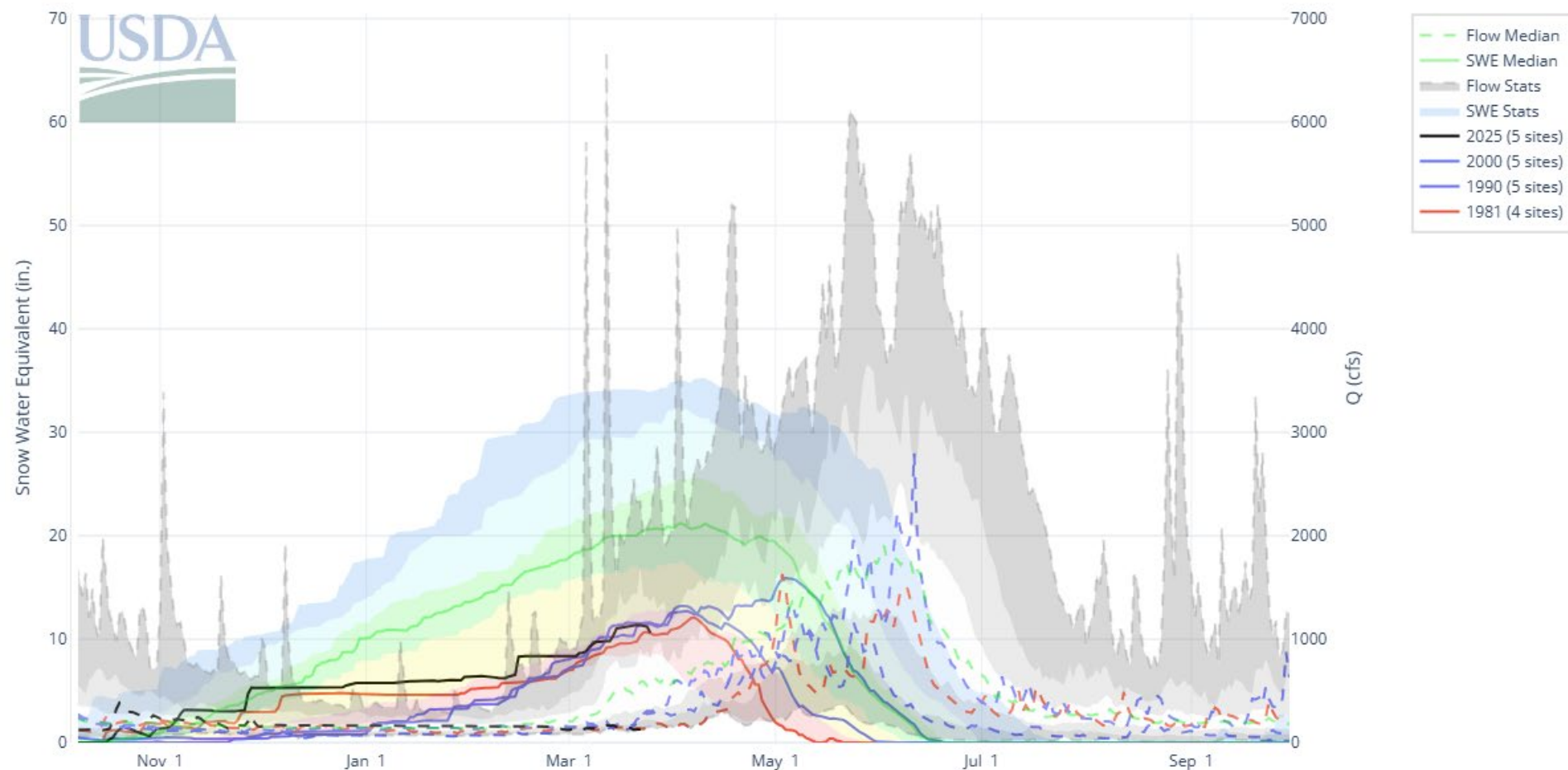




San Juan R nr Carracas Snow to Flow Plot



San Juan R nr Carracas Snow to Flow Plot



## Summary

- Statewide snowpack is currently at 93% of normal, up from 88% on March 1
  - 103% and 104% of median in the South & North Platte River Basins respectively – better in the northern portion of state
  - 71% of median Snowpack in the Upper Rio Grand Basin
- Statewide mountain year-to-date precipitation is 95% of median
- Statewide reservoir storage is at 94% of median
  - 80% of median reservoir storage in SMDASJ Basins
  - 124% and 114% of median in the Rio Grande and Arkansas river Basins respectively
- Seasonal streamflow forecasts are projected
  - Better in the northern and eastern halves of the state
  - Progressively lower as you translate southwest through the state



## Non-Discrimination Statement:

In accordance with Federal civil rights law and U.S. Department of agriculture (USDA) civil rights regulations and policies, the USDA, its Agencies, offices, and employees, and institutions participating in or administering USDA programs are prohibited from discriminating based on race, color, national origin, religion, sex, gender identity (including gender expression), sexual orientation, disability, age, marital status, family/parental status, income derived from a public assistance program, political beliefs, or reprisal or retaliation for prior civil rights activity, in any program or activity conducted or funded by USDA (not all bases apply to all programs). Remedies and complaint filing deadlines vary by program or incident.

Persons with disabilities who require alternative means of communication for program information (e.g., Braille, large print, audiotape, American Sign Language, etc.) should contact the responsible Agency or USDA 's TARGET Center at (202) 720-2600 (voice and TTY) or contact USDA through the Federal Relay Service at (800) 877-8339. Additionally, program information may be made available in languages other than English.

To file a program discrimination complaint, complete the USDA Program Discrimination Complaint Form, AD-3027, found online at [How to File a Program Discrimination Complaint](#) and at any USDA office or write a letter addressed to USDA and provide in the letter all of the information requested in the form. To request a copy of the complaint form, call (866) 632-9992. Submit your completed form or letter to USDA by: (1) mail: U.S. Department of Agriculture, Office of the Assistant Secretary for Civil Rights, 1400 Independence Avenue, SW, Washington, D.C. 20250-9410; (2) fax: (202) 690-7442; or (3) email: [program.intake@usda.gov](mailto:program.intake@usda.gov).





United States Department of Agriculture

Colorado Snow Surveys

# Water Conditions Monitoring Committee Meeting

## March 25<sup>th</sup>, 2025

### NRCS Snow Survey and Water Supply Forecasting Program

Brian Domonkos

Hydrologist

[Brian.Domonkos@usda.gov](mailto:Brian.Domonkos@usda.gov)

720-544-2853

<http://www.nrcs.usda.gov/wps/portal/nrcs/main/co/snow/>