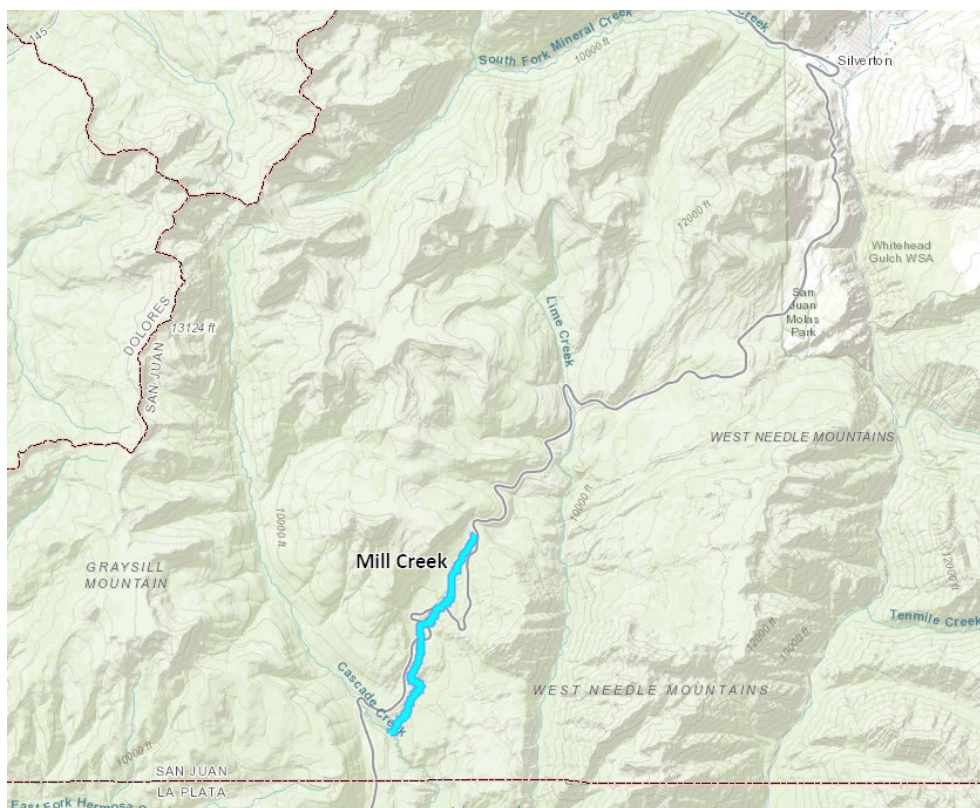


# Mill Creek Instream Flow Recommendation Fact Sheet

---



UPPER TERMINUS: headwaters in the vicinity of  
UTM North: 4175848.183 UTM East: 255149.4086

LOWER TERMINUS: confluence with Cascade Creek  
UTM North: 4170791.118 UTM East: 252820.3399

WATER DIVISION: 7

WATER DISTRICT: 30

COUNTY: San Juan

WATERSHED: Animas River

CWCB ID: 26/7/A-001

RECOMMENDER: Colorado Parks and Wildlife (CPW)

LENGTH: 4.01 miles

FLOW RECOMMENDATION: TBD

NATURAL ENVIRONMENT: Colorado River cutthroat trout San Juan River lineage



**COLORADO**

Colorado Water  
Conservation Board

Department of Natural Resources