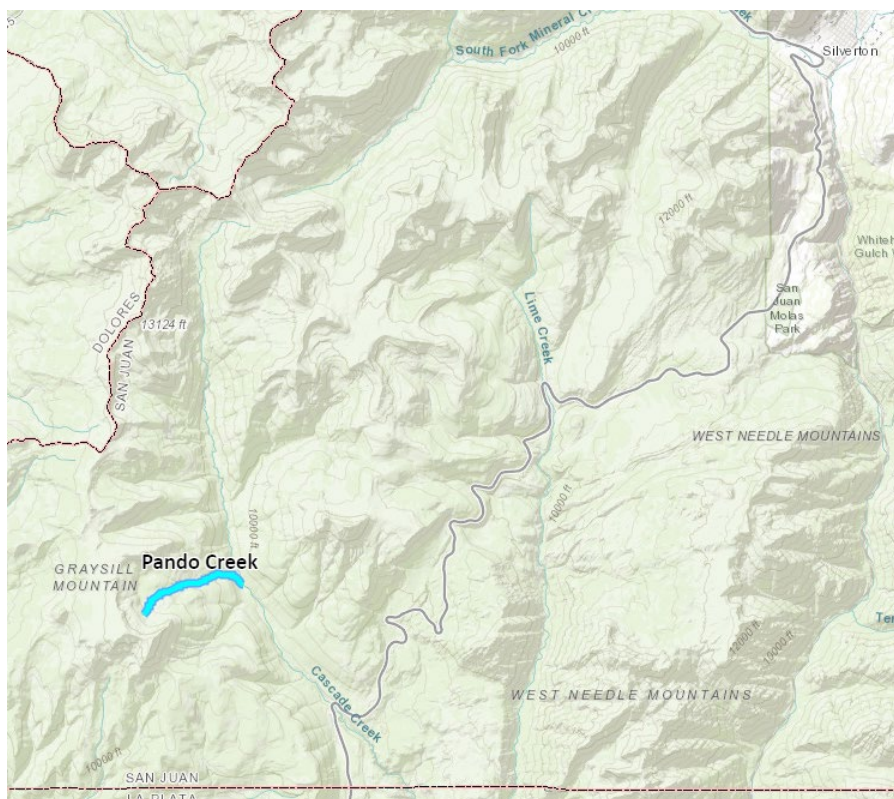


# Pando Creek Instream Flow Recommendation Fact Sheet

---



UPPER TERMINUS: headwaters in the vicinity  
UTM North: 4174770.139 UTM East: 249853.3631

LOWER TERMINUS: confluence with Cascade Creek  
UTM North: 4174104.123 UTM East: 247327.3284

WATER DIVISION: 7

WATER DISTRICT: 30

COUNTY: San Juan

WATERSHED: Animas River

CWCB ID: 26/7/A-002

RECOMMENDER: Colorado Parks and Wildlife (CPW)

LENGTH: 1.87 miles

FLOW RECOMMENDATION: TBD

NATURAL ENVIRONMENT: Colorado River cutthroat trout San Juan lineage



**COLORADO**

**Colorado Water  
Conservation Board**

Department of Natural Resources