



Water Conditions Monitoring Committee Meeting February 25th, 2025

NRCS Snow Survey and Water Supply Forecasting Program

Nagam Gill

Hydrologist

Nagam.Gill@usda.gov

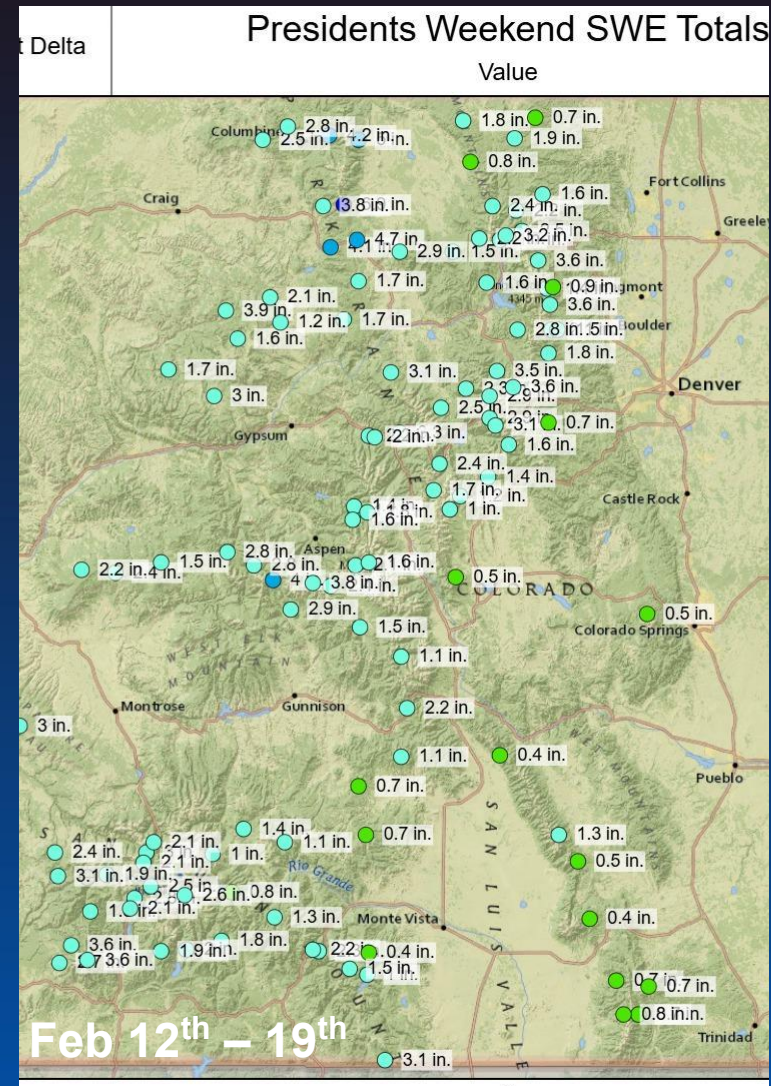
<http://www.nrcs.usda.gov/wps/portal/nrcs/main/co/snow/>

Statewide Conditions as of 2/24/25

- Snow water equivalent 102%
- WYTD precipitation 104%
- 30 day precipitation 109%
- 60 day precipitation 104%
- Soil moisture
 - 20" ranges from 51 – 149%
 - 8" ranges from 47 – 148%

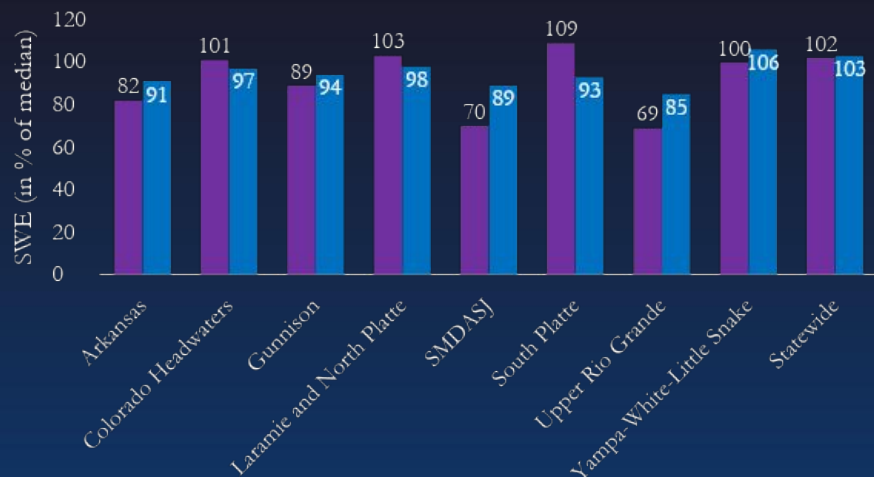
Statewide Conditions as of 2/13/25

- Snow water equivalent 90%
- WYTD precipitation 94%
- 30 day precipitation 55%
- 60 day precipitation 75%

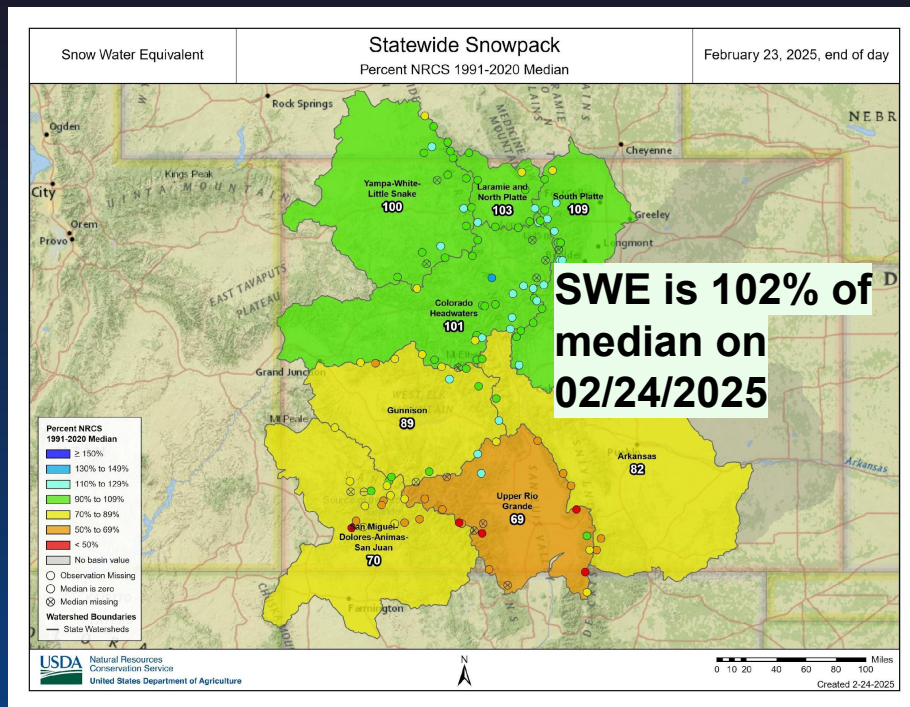
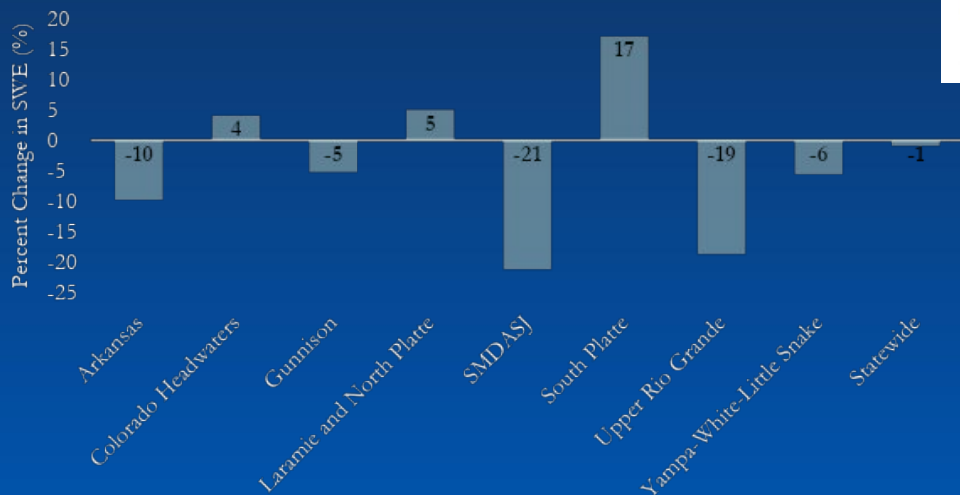


Colorado Snow Surveys

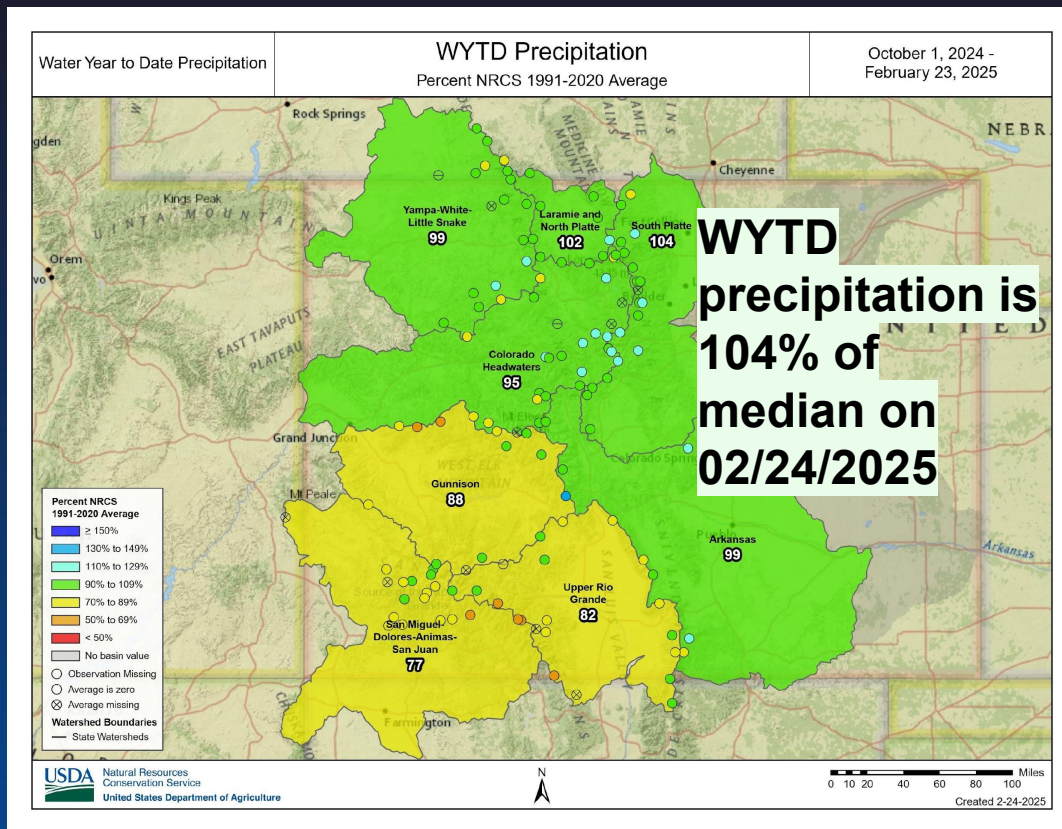
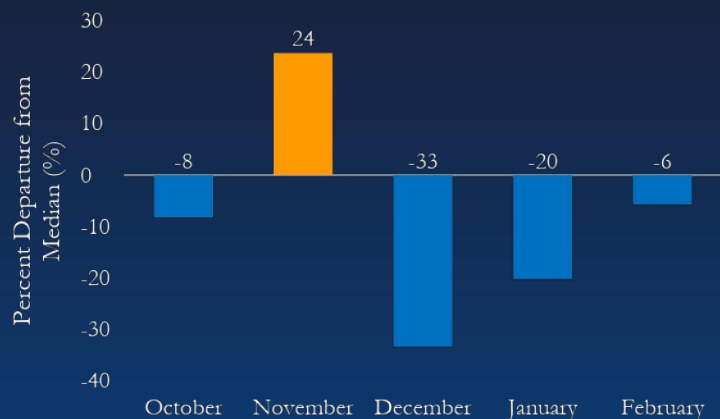
Snow Water Equivalent February 24th 2025 vs February 24th 2024



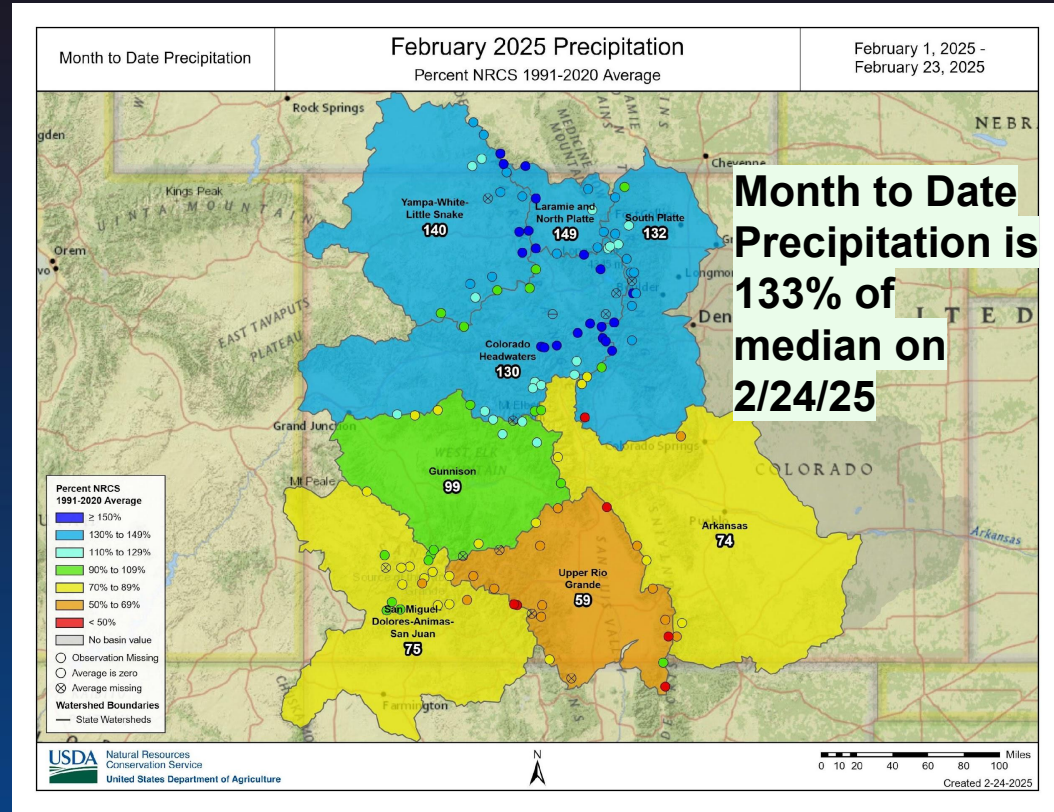
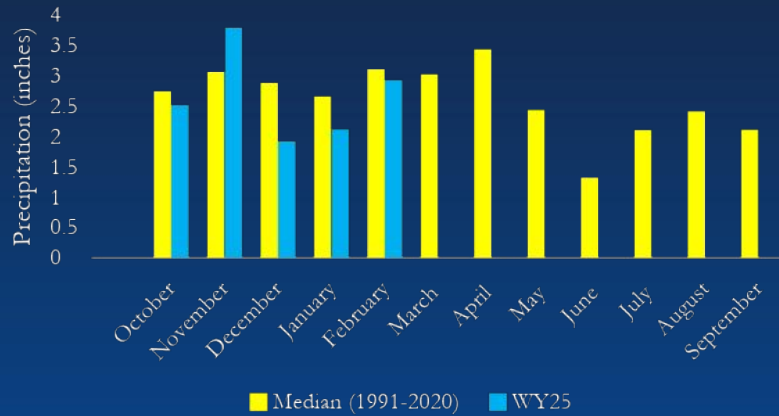
Percent Change in Snow Water Equivalent, February 24th 2025 vs February 24th 2024



Statewide Precipitation Percent Departure
WY25 from Normal

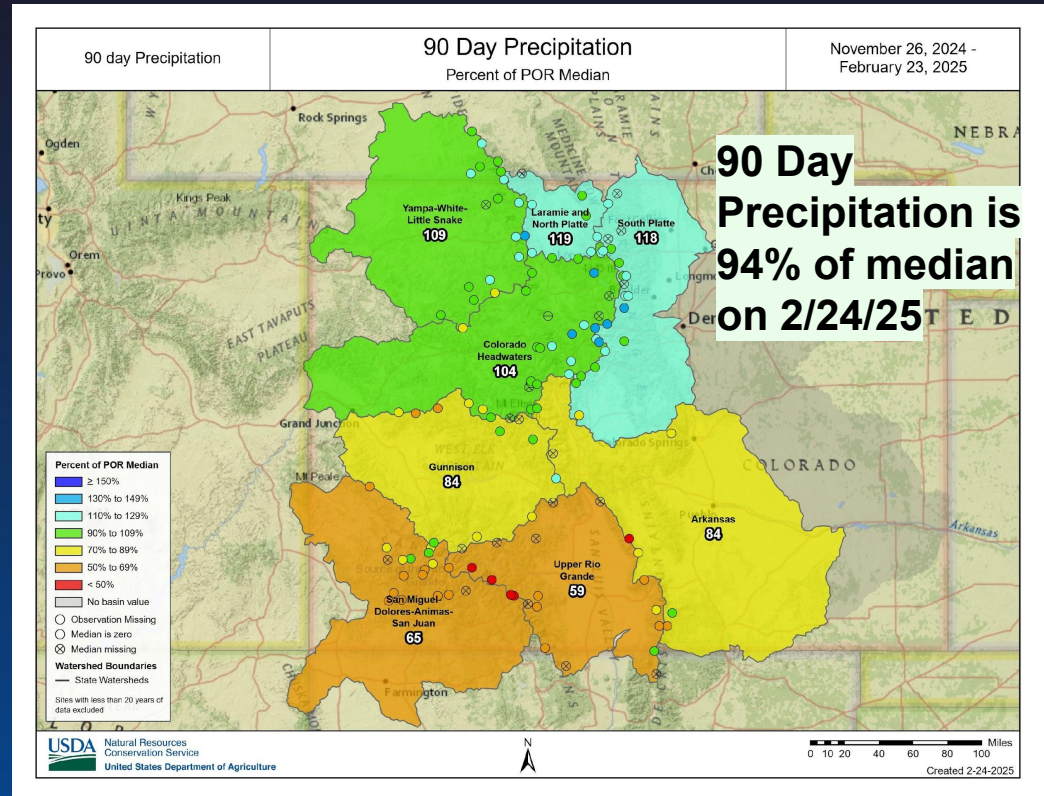
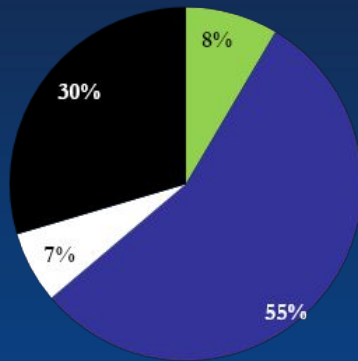


Statewide Precipitation by Month, Median (1991-2020) vs WY25



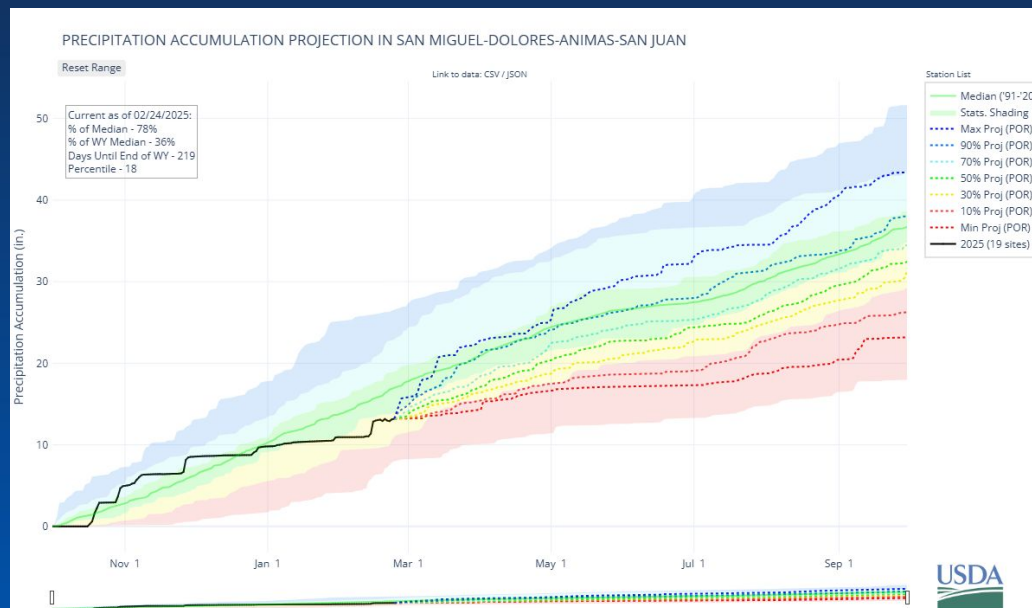
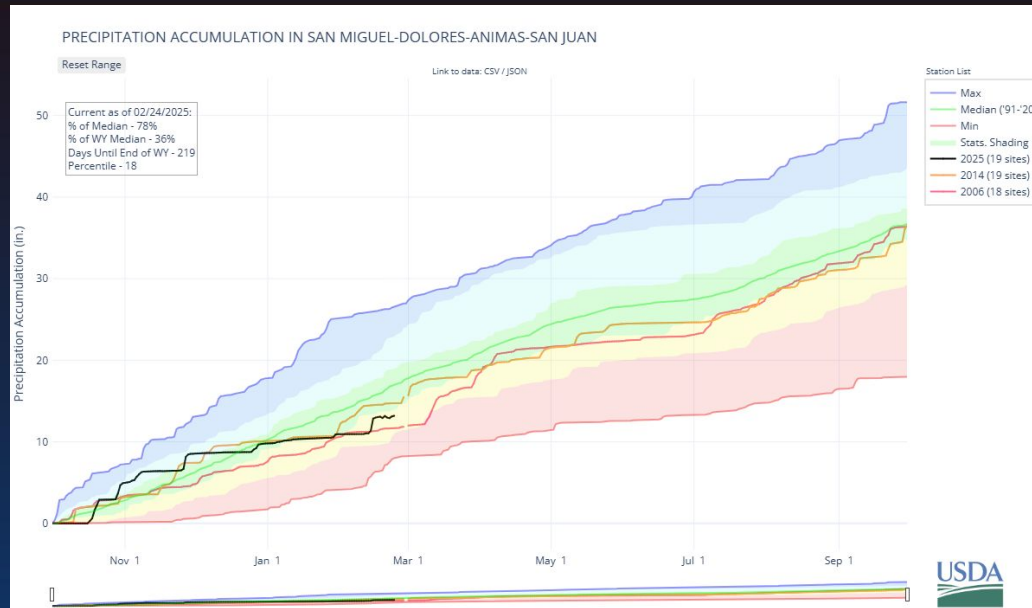
Seasonal precipitation Distribution by Median Accumulation (SMDASJ & Upper rio grande Basin)

■ October
 ■ November - April
 ■ May
 ■ June - September



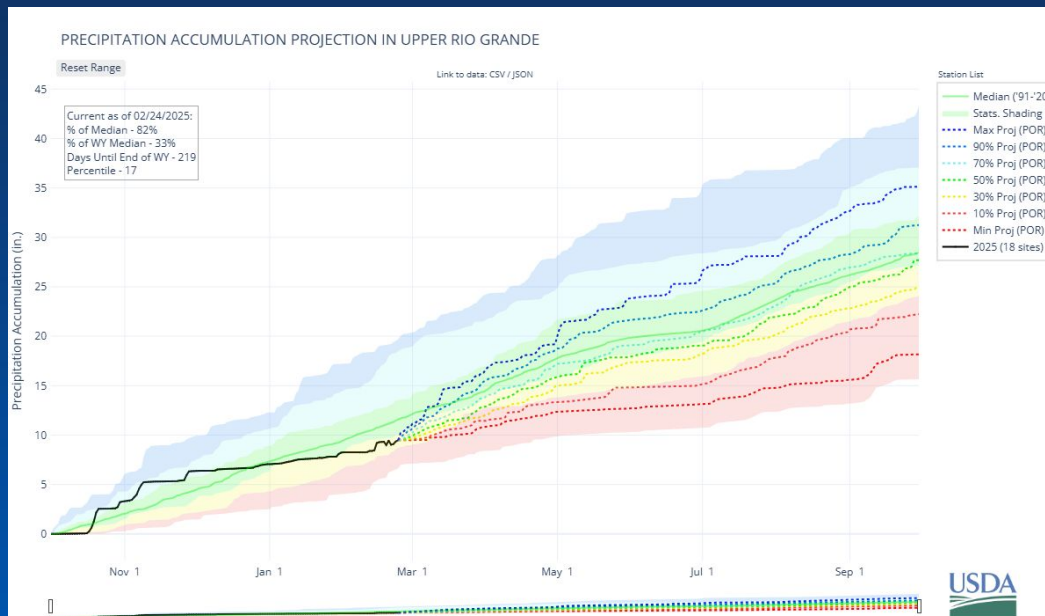
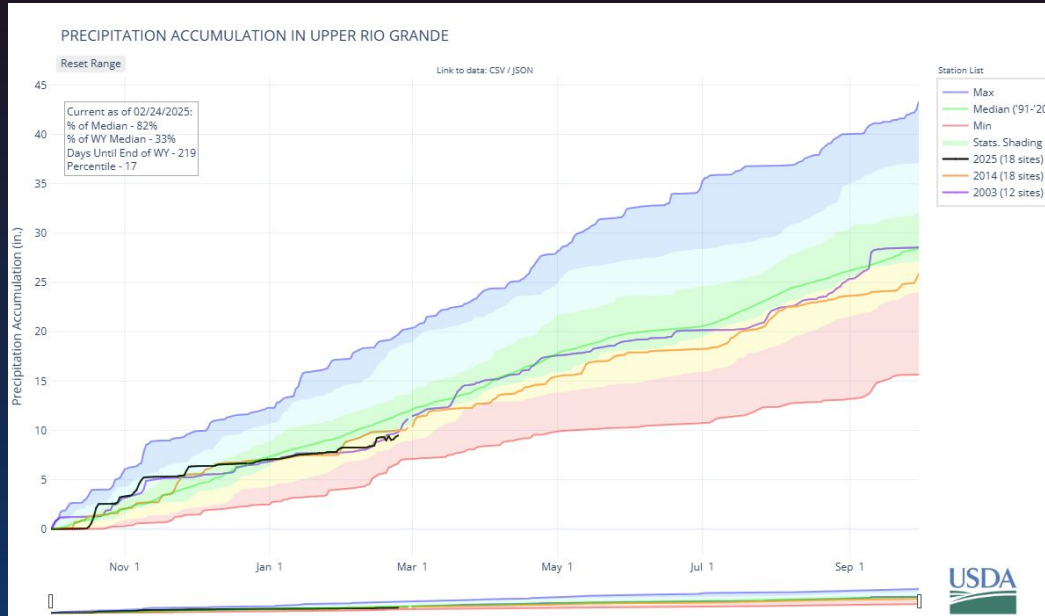


Colorado Snow Surveys

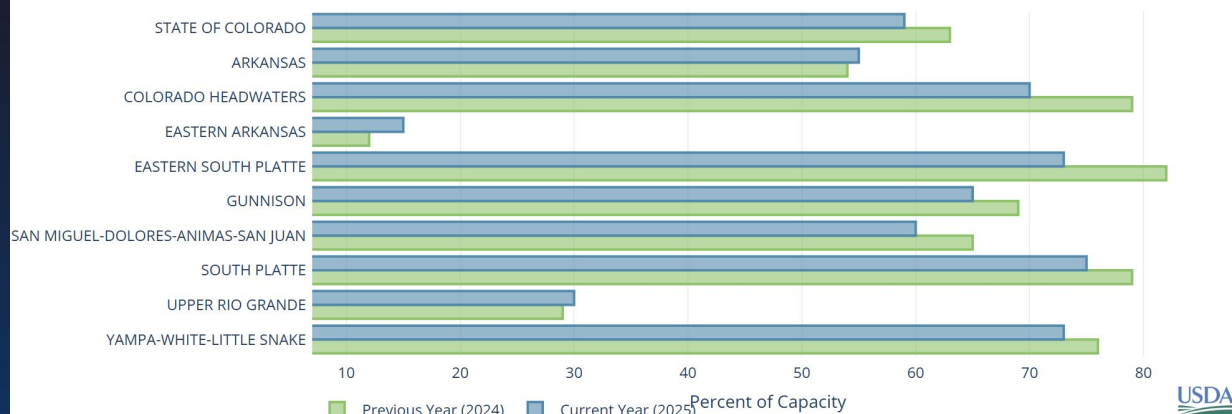




Colorado Snow Surveys

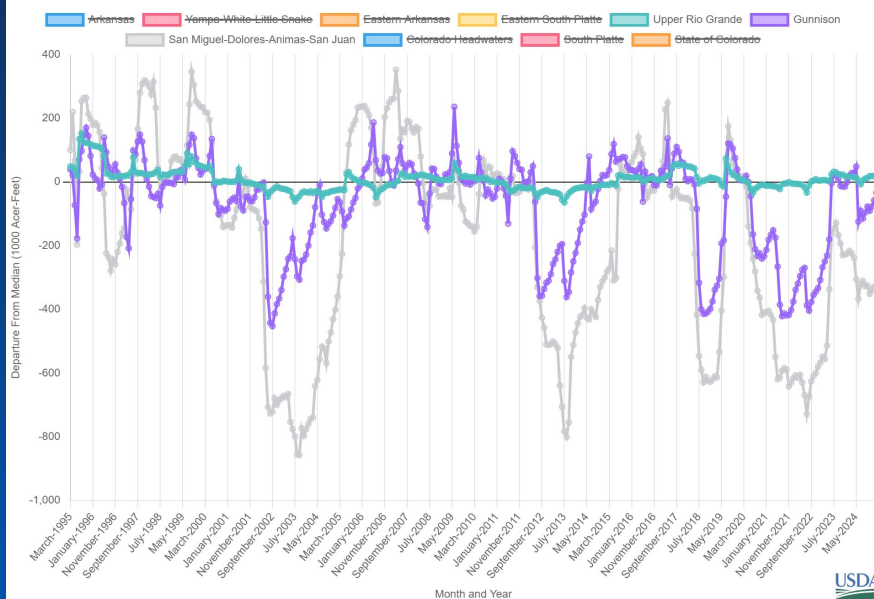


RESERVOIR STORAGE IN COLORADO FEBRUARY 1, 2025



Statewide Reservoirs are at 90% February 1st 2025 compared to 87% February 1st 2024

Colorado Departure From Median Timeseries Plot



SMDASJ:

- McPhee is at 55% capacity and 77% of median
- Navajo is at 61% capacity and 79% of median

Gunnison:

- Blue Mesa is at 62% capacity and 95% of median



United States Department of Agriculture

Colorado Snow Surveys

Soil Moisture (8 in.)

8" Soil Moisture

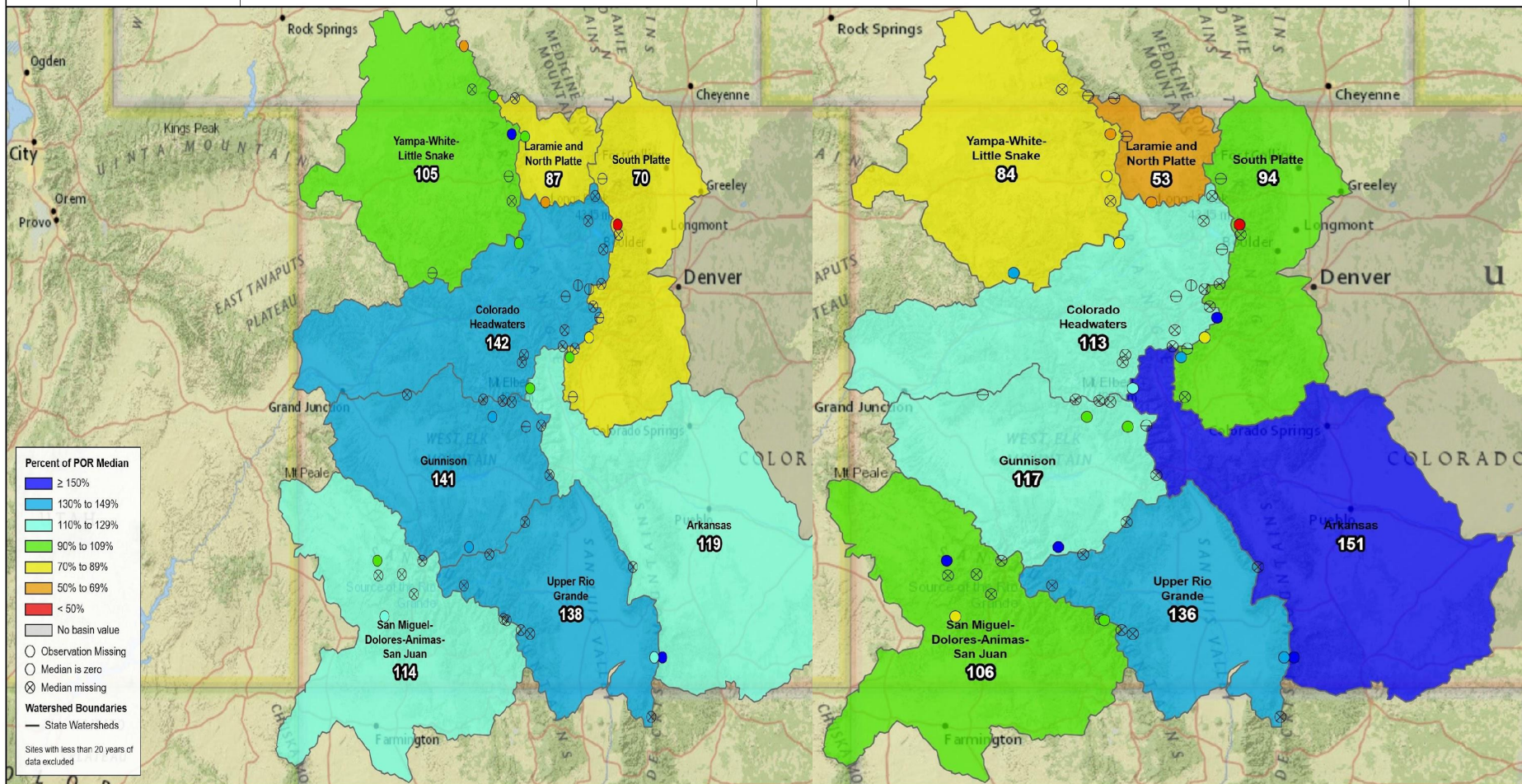
Percent of POR Median

Febru:

20" Soil Moisture

Percent of POR Median

February 23



0 10 20

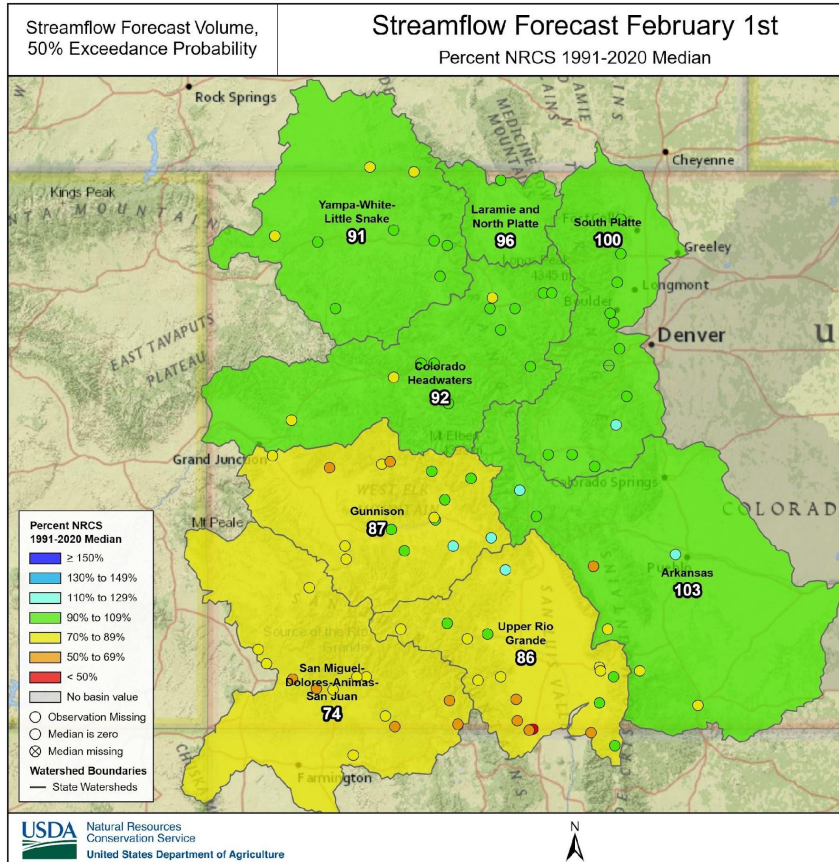


0 10 20 40

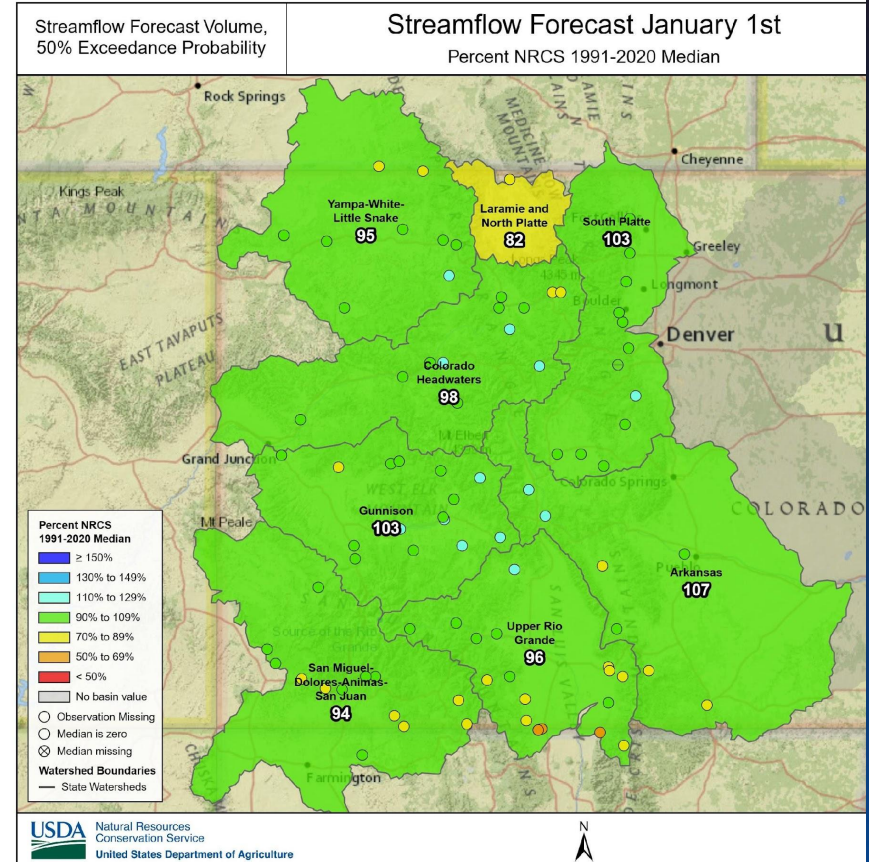


United States Department of Agriculture

Colorado Snow Surveys



50% exceedance
probability February
1st is 89%

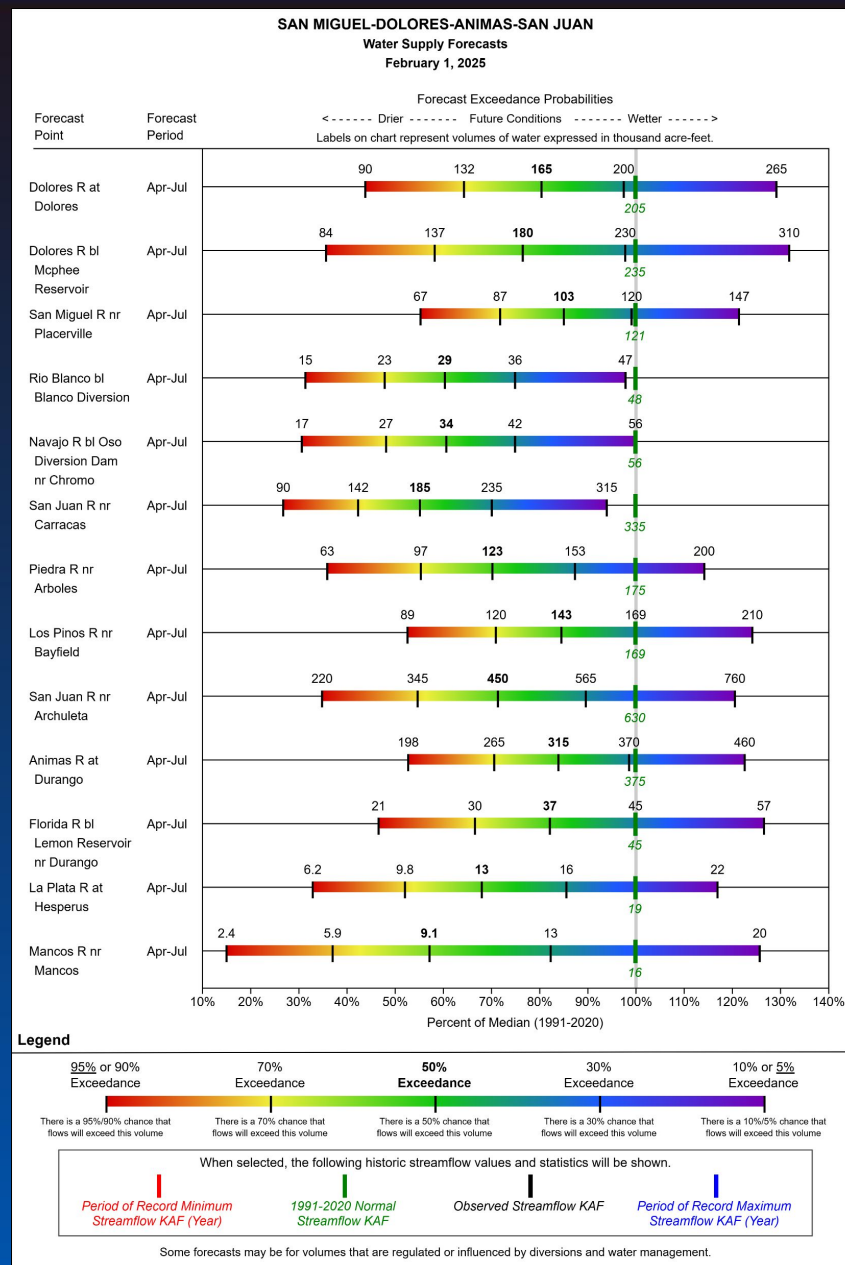


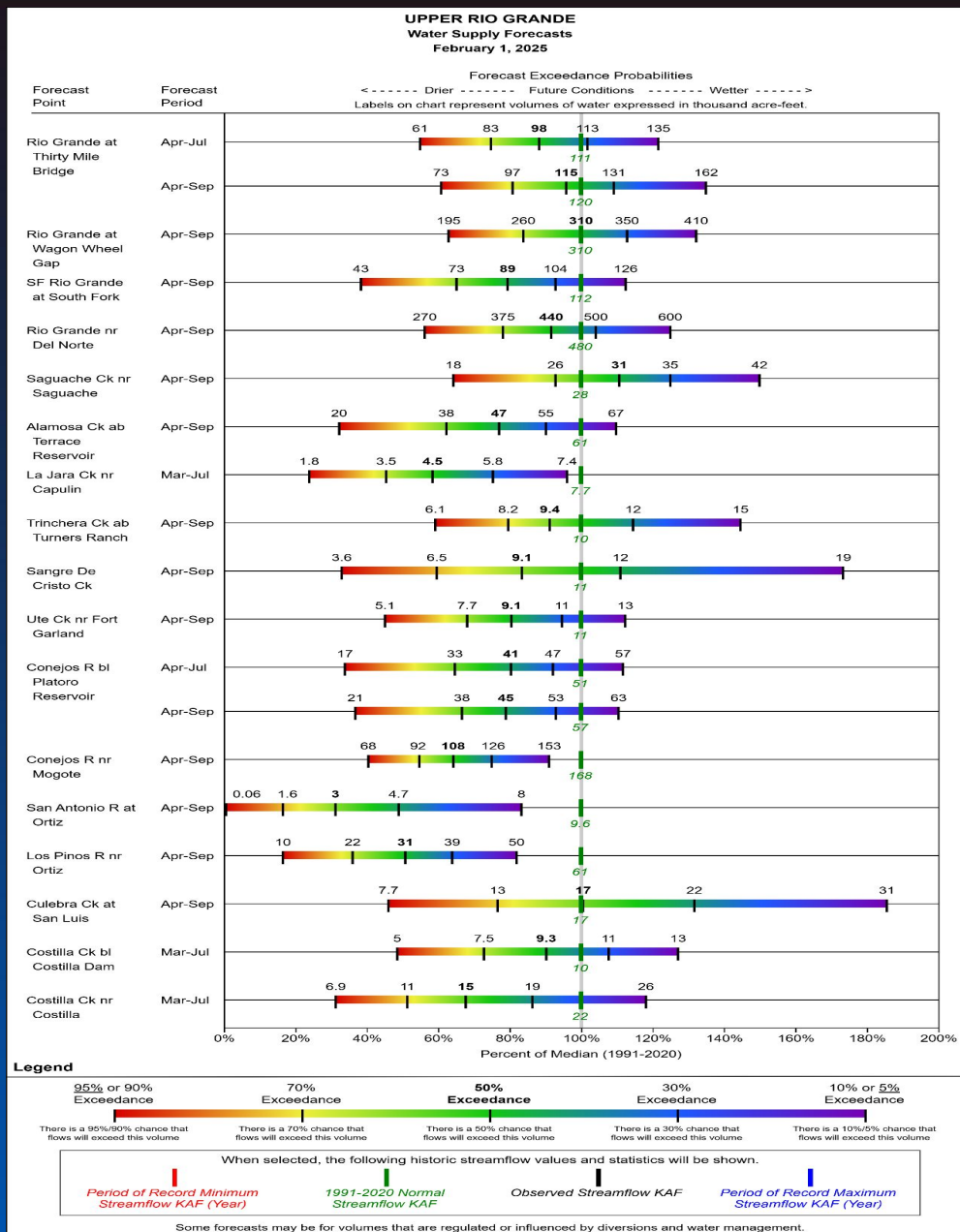
50% exceedance
probability January
1st is 98%



Colorado Snow Surveys

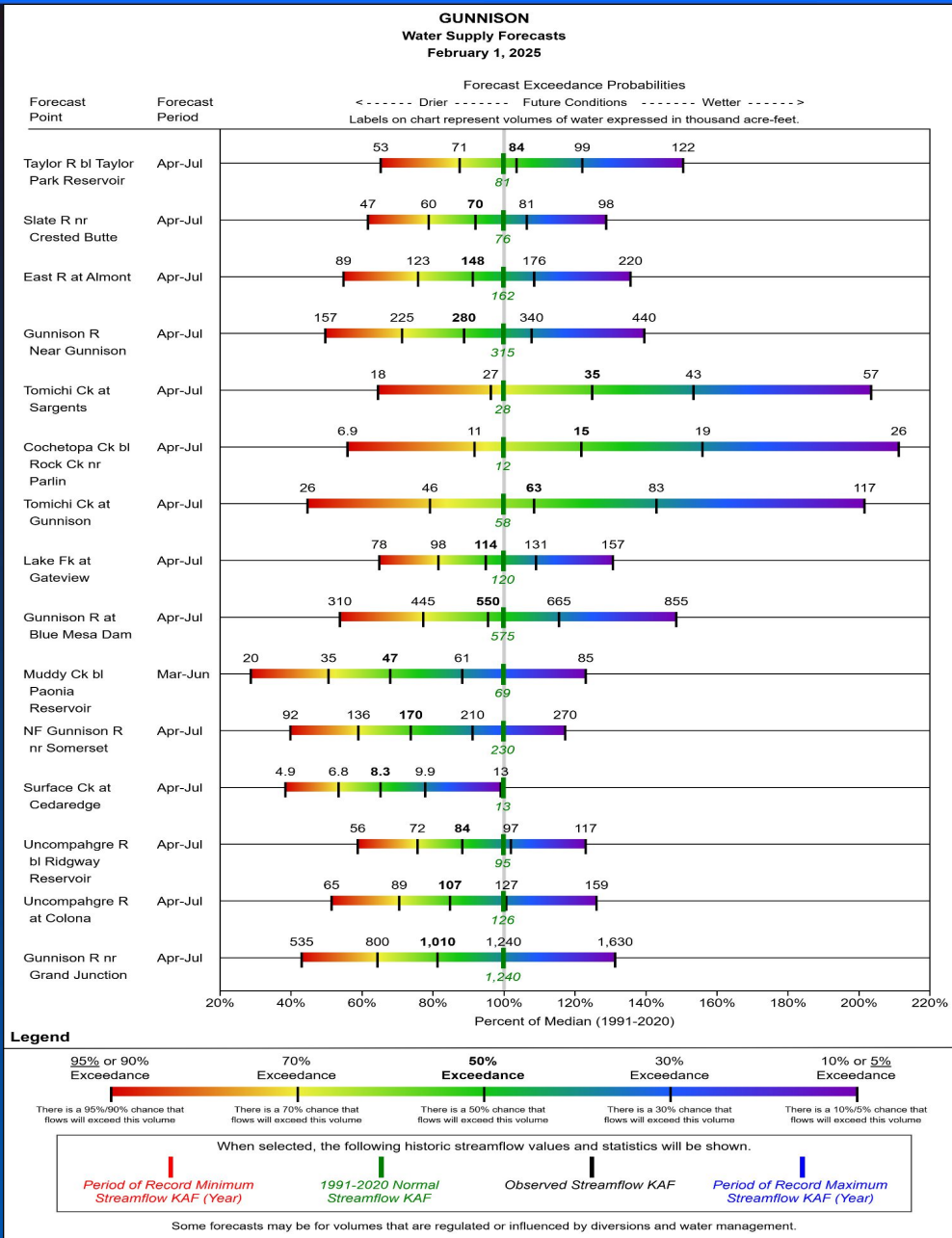
The 50% exceedance forecast is often the primary reference, considering higher and lower exceedance scenarios provides a more complete picture of potential runoff outcomes







Colorado Snow Surveys





Colorado Snow Surveys

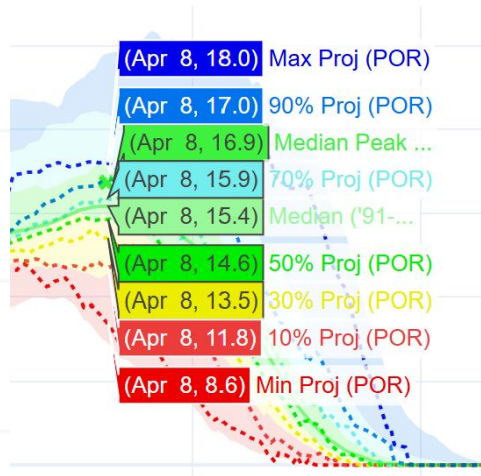
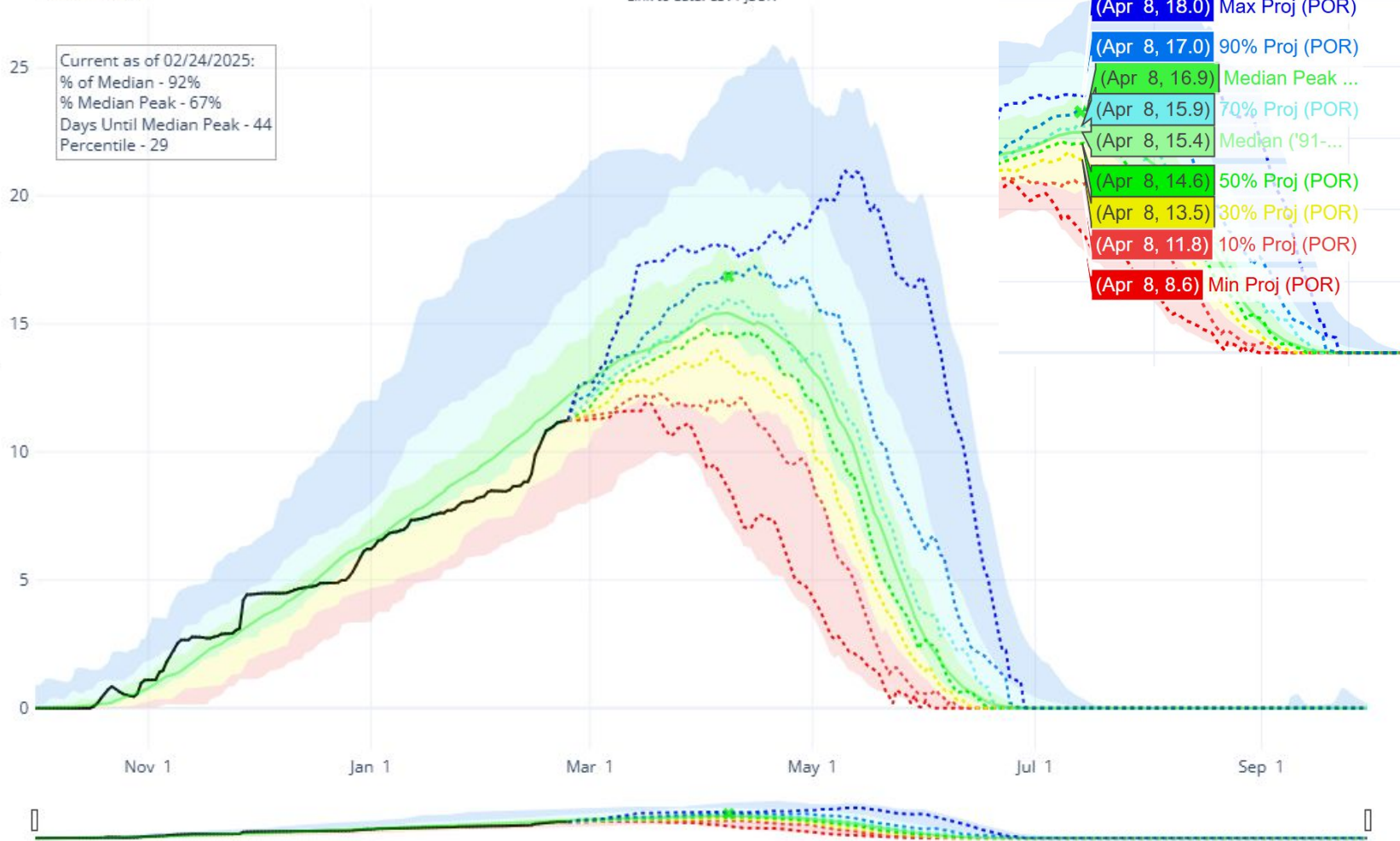
SNOW WATER EQUIVALENT PROJECTION IN STATE OF COLORADO

Reset Range

[Link to data: CSV / JSON](#)

Current as of 02/24/2025:
% of Median - 92%
% Median Peak - 67%
Days Until Median Peak - 44
Percentile - 29

Snow Water Equivalent (in.)



(Apr 8, 18.0)	Max Proj (POR)
(Apr 8, 17.0)	90% Proj (POR)
(Apr 8, 16.9)	Median Peak ...
(Apr 8, 15.9)	7Q% Proj (POR)
(Apr 8, 15.4)	Median ('91-...
(Apr 8, 14.6)	50% Proj (POR)
(Apr 8, 13.5)	30% Proj (POR)
(Apr 8, 11.8)	10% Proj (POR)
(Apr 8, 8.6)	Min Proj (POR)

ation List

- ✱ Median Peak SWE
- Median ('91-'20)
- Stats. Shading
- ... Max Proj (POR)
- ... 90% Proj (POR)
- ... 70% Proj (POR)
- ... 50% Proj (POR)
- ... 30% Proj (POR)
- ... 10% Proj (POR)
- ... Min Proj (POR)
- 2025 (115 sites)



Summary

- Statewide snow water equivalent was boosted by mid-February storms from 90% on February 1st to 102% on February 24th
- Statewide WYTD precipitation is 104% of median. Ranging from 77% in the combined SMDASJ to 104% in the South Platte. Month to date precipitation is 133% showing a clear divide with northern water systems being favored and southern water systems ranging from 65 to 84%
- Statewide reservoir storage is at 90% of median a 3% increase from this time last year
- Generally, 8" and 20" soil moisture sensors indicate high saturation percentages across southern basins due to the strong monsoon influence at the end of WY24. In contrast, some northern regions received minimal late summer precipitation and remain drier, particularly the South Platte
- Statewide streamflow forecasts have declined from January to February, with the 50% exceedance probability dropping from 98% to 89%. Forecast accuracy is lower early in the season and improves as more snowpack data becomes available. Future weather remains the largest source of uncertainty, making it crucial to evaluate the full range of exceedance probabilities, especially in the drier regions like the southwest.



Non-Discrimination Statement:

In accordance with Federal civil rights law and U.S. Department of agriculture (USDA) civil rights regulations and policies, the USDA, its Agencies, offices, and employees, and institutions participating in or administering USDA programs are prohibited from discriminating based on race, color, national origin, religion, sex, gender identity (including gender expression), sexual orientation, disability, age, marital status, family/parental status, income derived from a public assistance program, political beliefs, or reprisal or retaliation for prior civil rights activity, in any program or activity conducted or funded by USDA (not all bases apply to all programs). Remedies and complaint filing deadlines vary by program or incident.

Persons with disabilities who require alternative means of communication for program information (e.g., Braille, large print, audiotape, American Sign Language, etc.) should contact the responsible Agency or USDA 's TARGET Center at (202) 720-2600 (voice and TTY) or contact USDA through the Federal Relay Service at (800) 877-8339. Additionally, program information may be made available in languages other than English.

To file a program discrimination complaint, complete the USDA Program Discrimination Complaint Form, AD-3027, found online at [How to File a Program Discrimination Complaint](#) and at any USDA office or write a letter addressed to USDA and provide in the letter all of the information requested in the form. To request a copy of the complaint form, call [866] 632-9992. Submit your completed form or letter to USDA by: (1) mail: U.S. Department of Agriculture, Office of the Assistant Secretary for Civil Rights, 1400 Independence Avenue, SW, Washington, D.C. 20250-9410; (2) fax: (202) 690-7442; or (3) email: program.intake@usda.gov.