

CPW's Upcoming Instream Flow Efforts

2025 Instream Flow Workshop

Katie Birch

Instream Flow Program Specialist

Colorado Parks and Wildlife



LIVE LIFE
OUTSIDE

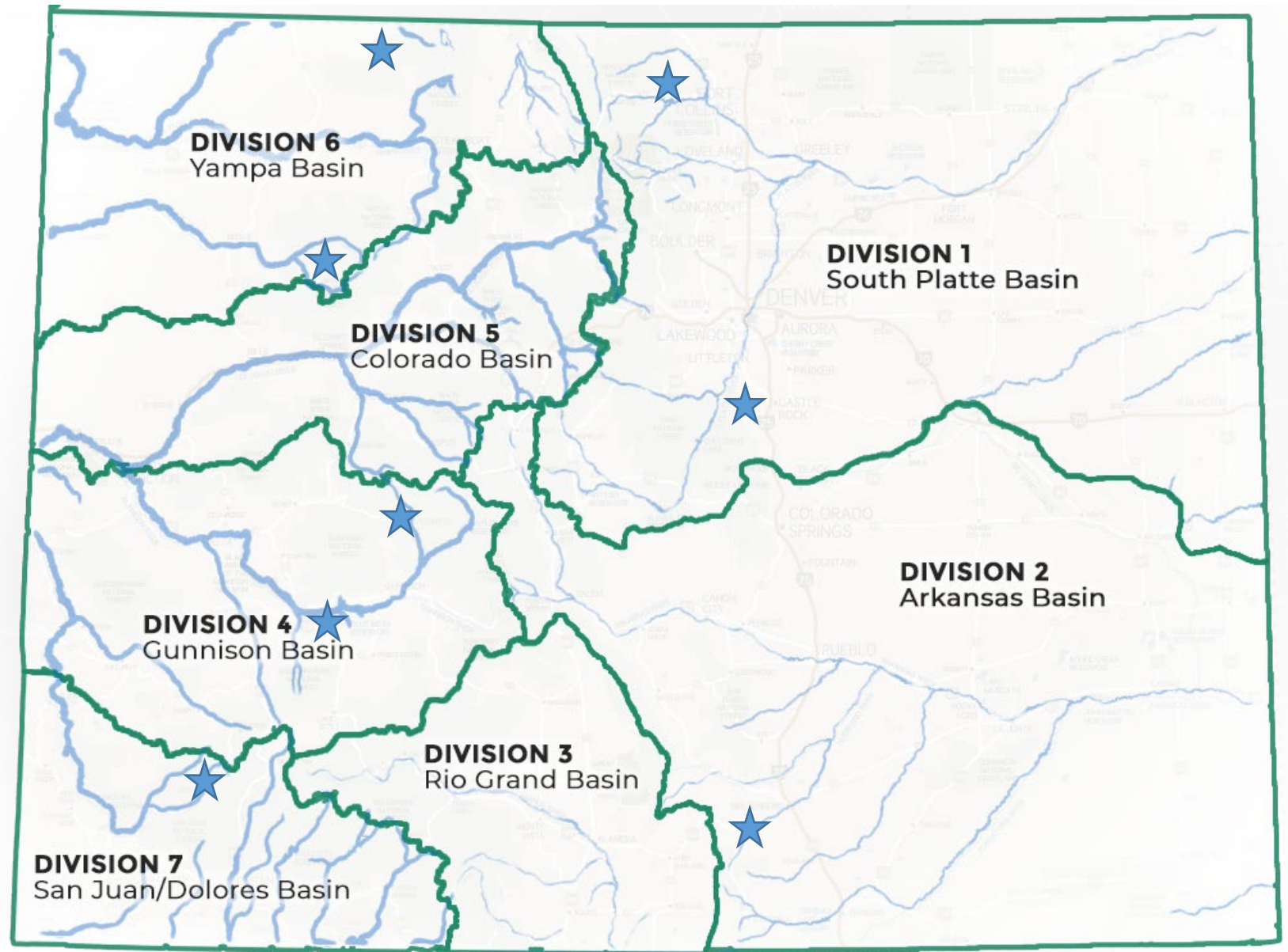
Why does CPW participate in the ISF & NLL program?

- Help fulfill CPW's statutory charge:
 - *“that the wildlife and their environment are to be protected, preserved, enhanced, and managed for the use, benefit, and enjoyment of the people of this state and its visitors”*
- CPW's strategic planning documents directs staff:
 - To *“conserve wildlife and habitat to ensure healthy sustainable populations and ecosystems”*
 - To *“protect and enhance water resources for fish and wildlife populations,” by pursuing, “partnerships and agreements to enhance instream flows, protect reservoir levels, and influence water management activities”*

❖ Focus on high conservation value fish populations

❖ Leveraging local knowledge & continue to work with interested partners

❖ Continue work on ongoing ISFs from past workshops



LIVE LIFE
OUTSIDE

Ongoing ISF Recommendations

Water Division	Stream Name	Supporting Documentation	Recommending Entity	County	Status
1	East Roaring Fork Creek (Headwaters to confl. Roaring Creek)		CPW	Larimer	Active
1	Garber Creek (Confl. North & South Garber Creeks to confl. West Plum Creek)	Preliminary Recommendation	CPW	Douglas	Active
1	Platte Gulch (Headwaters to confl. Middle Fork South Platte)	Preliminary Recommendation	CPW and Park County	Park	Active
1	West Plum Creek (Headwaters to confl. East Plum Creek)	Preliminary Recommendation	CPW	Douglas	Active
2	Cottonwood Creek (Headwaters to F. Keuhn Ditch No. 2 headgate)	Preliminary Recommendation	CPW	Custer	Active
4	Pine Creek (Headwaters to confl. Morrow Point Reservoir)	Preliminary Recommendation	CPW	Gunnison	Active
6	South Fork White River (Flat Tops Wilderness Boundary to confl. Swede Creek)	Preliminary Recommendation	CPW	Rio Blanco	Active

<https://cwcb.colorado.gov/2025-isf-recommendations>

6	Bear Creek (Headwaters to confl. NF White River)	Preliminary Recommendation	CPW	Garfield	Active
6	Big Fish Creek (Headwaters to confl. NF White River)	Preliminary Recommendation	CPW	Garfield	Active
6	Clear Creek (Headwaters to confl. Milk Creek)	Executive Summary Supplementary Data	BLM	Rio Blanco	Intent to Appropriate Formed
6	East Marvine Creek (Headwaters to confl. Marvine Creek)	Preliminary Recommendation	CPW	Rio Blanco	Active
6	Hauskins Creek (Headwaters to confl. NF White River)	Preliminary Recommendation	CPW	Garfield	Active
6	Hill Creek (Headwaters to Hill Creek Ditch #2 & #3 hdgt.)	Preliminary Recommendation	CPW	Rio Blanco	Active
6	Lynx Creek (Headwaters to confl. NF White River)	Preliminary Recommendation	CPW	Garfield	Active
6	Mirror Creek (Headwaters to confl. NF White River)	Preliminary Recommendation	CPW	Rio Blanco	Active
6	<Pagoda Creek (Headwaters to confl. South Fork Williams Fork)	Preliminary Recommendation	BLM	Rio Blanco	Active
6	Paradise Creek (Headwaters to Paradise Ponds diversion hdgt.)	Preliminary Recommendation	CPW	Garfield, Rio Blanco	Active
6	Picket Pin Creek (Headwaters to confl. NF White River)	Preliminary Recommendation	CPW	Garfield	Active

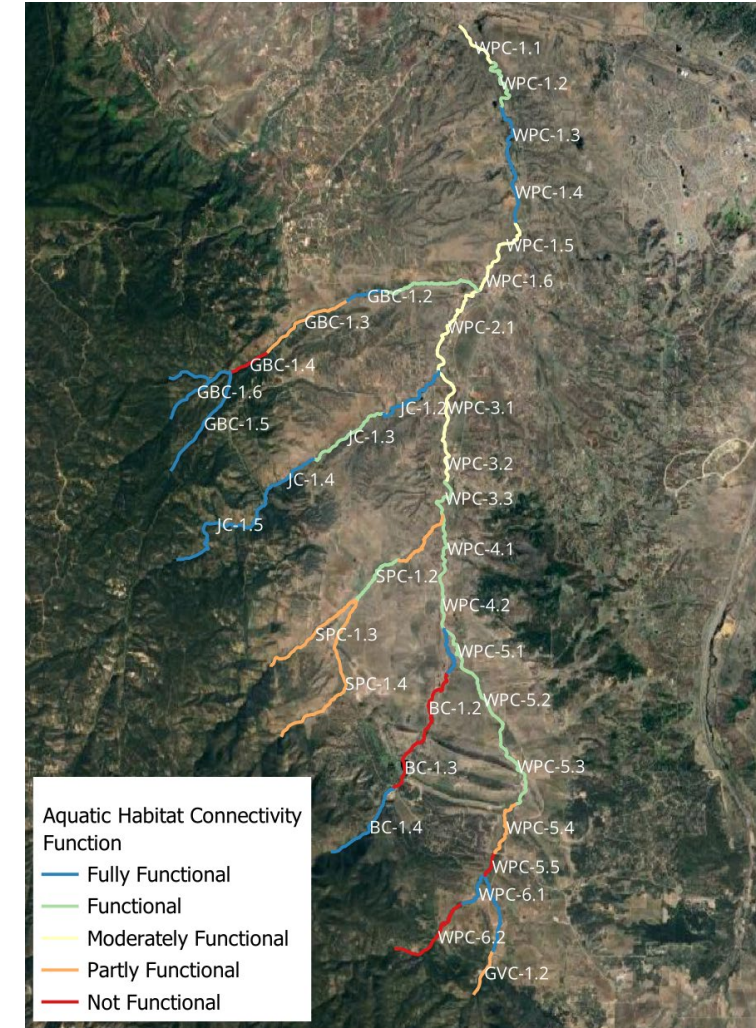




West Plum Creek

Important transitional fishery:

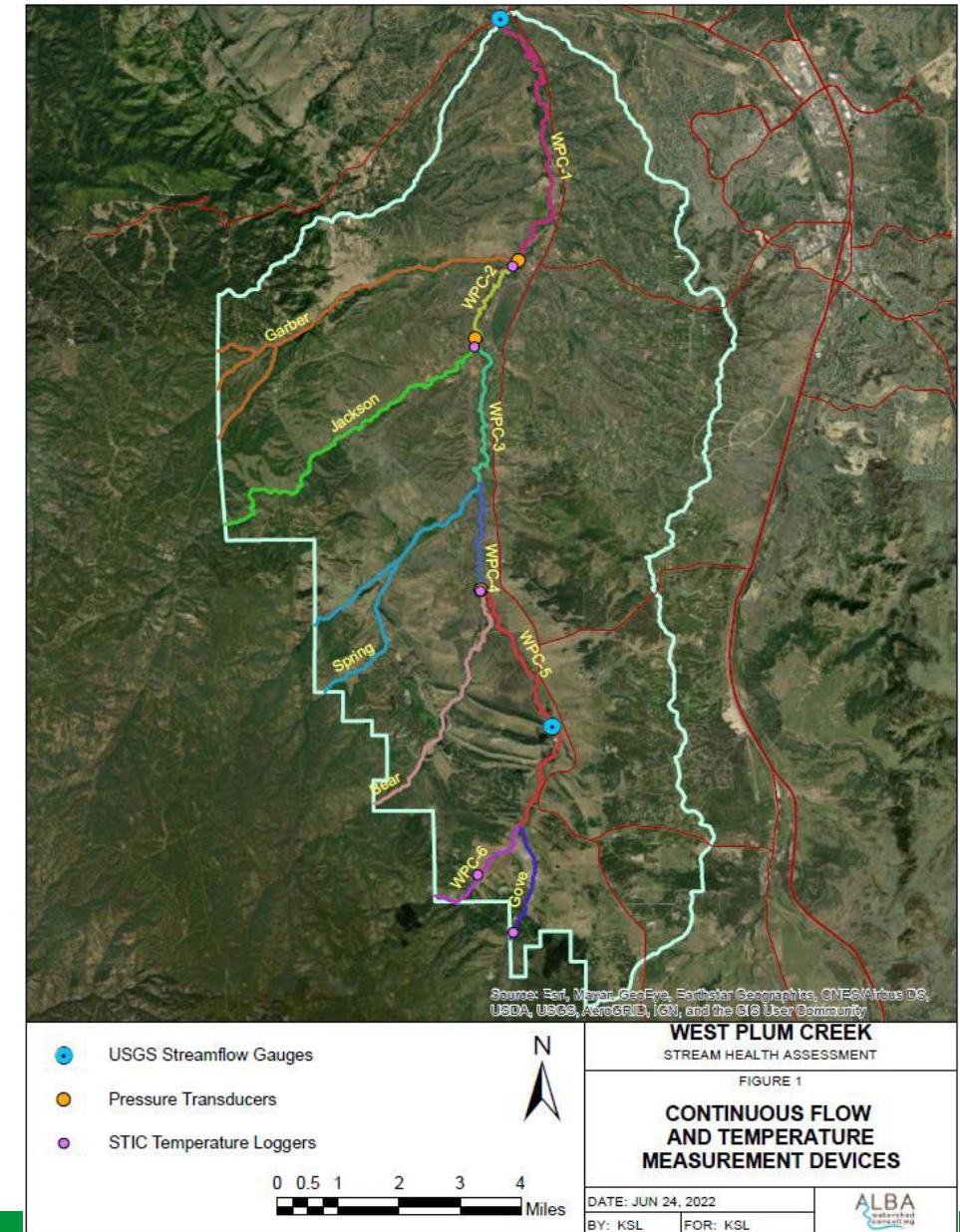
- Northern Redbelly Dace (state endangered)
- Common Shiner (state threatened)
- Northern leopard frog (Tier 1 SGCN)
- Many native warm-water species
 - Plains Topminnow and Iowa Darter





West Plum Creek

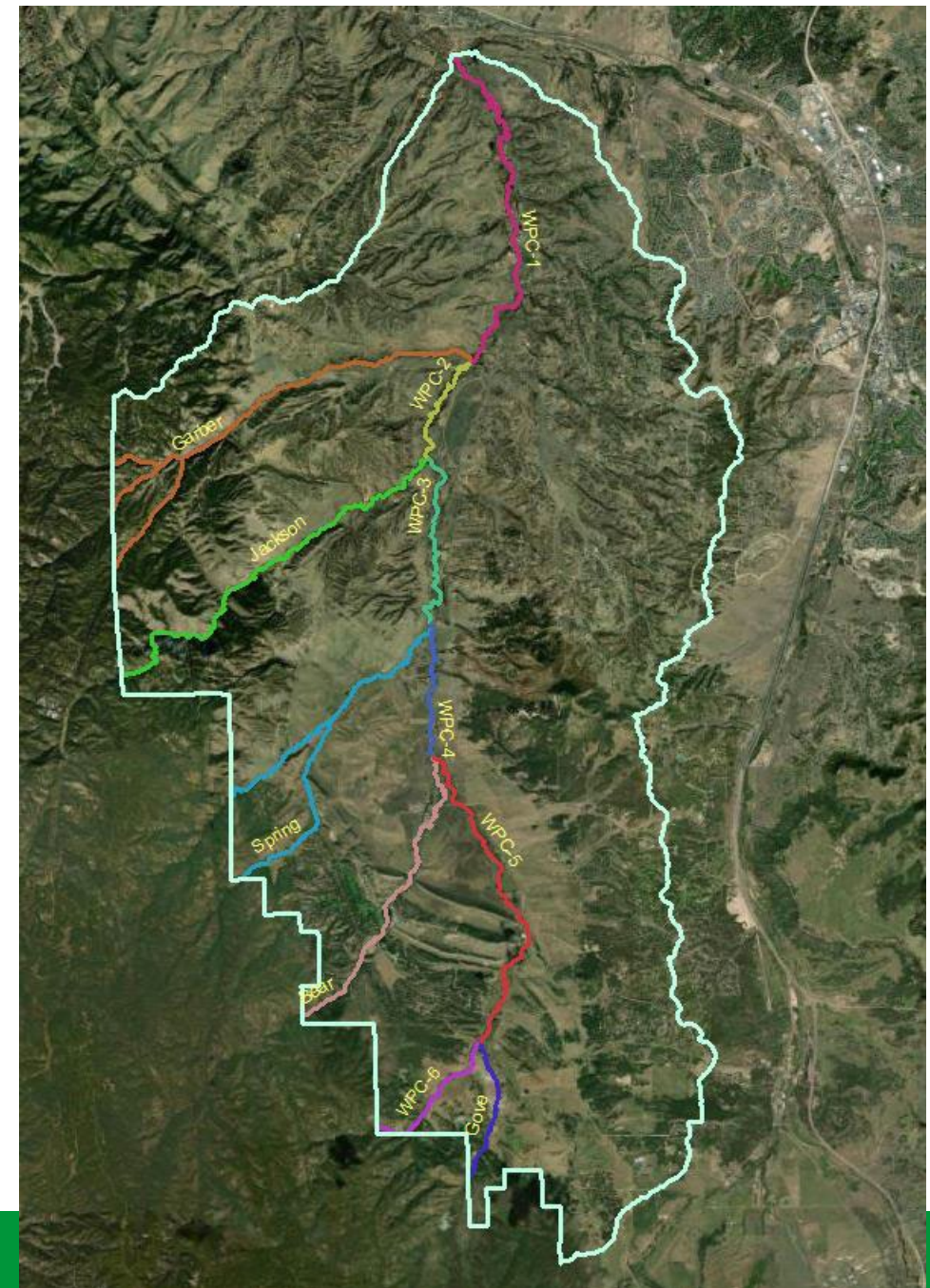
- Stream Management Planning Group formed in 2020
- Phase 1 Technical report completed recently
- Leverage science and outreach being conducted by the SMP



West Plum Creek Preliminary R2Cross Results

Headwaters to Bear Creek:

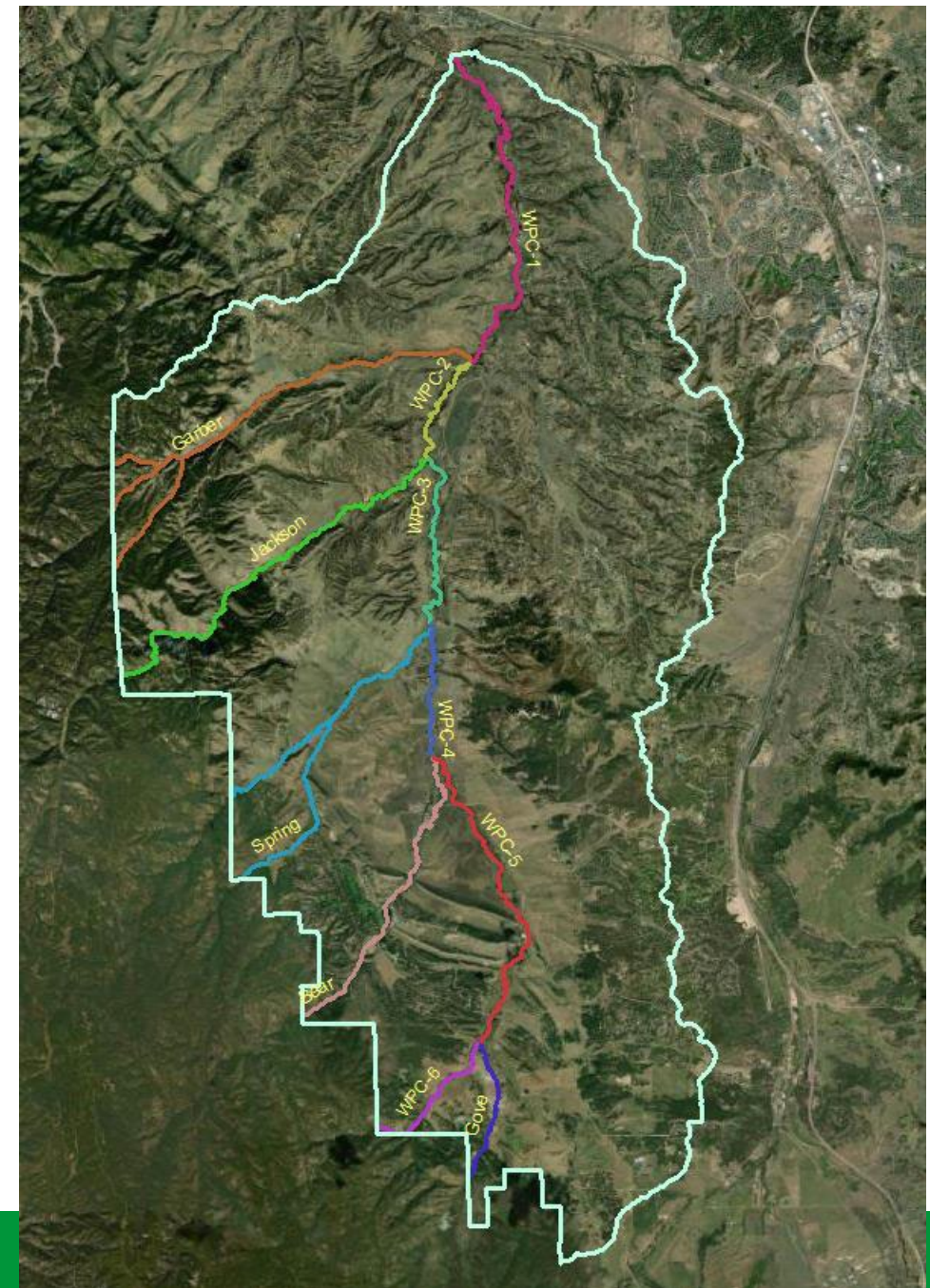
	Bankfull width	Flow	2/3	3/3
5/27/2021	12.1'	5.34 cfs	1.75 cfs	1.92 cfs
5/27/2021	11.0'	5.34 cfs	0.98 cfs	2.98 cfs
5/26/2021	10.3'	15.3 cfs	0.28 cfs	5.19 cfs
5/26/2021	10.9'	15.3 cfs	1.12 cfs	2.93 cfs
6/17/2019	11.21	3.91 cfs	1.49 cfs	1.79 cfs
Flow Recommendation (average)			1.1 cfs	3.0 cfs



West Plum Creek Preliminary R2Cross Results

Bear Creek to Jackson Creek:

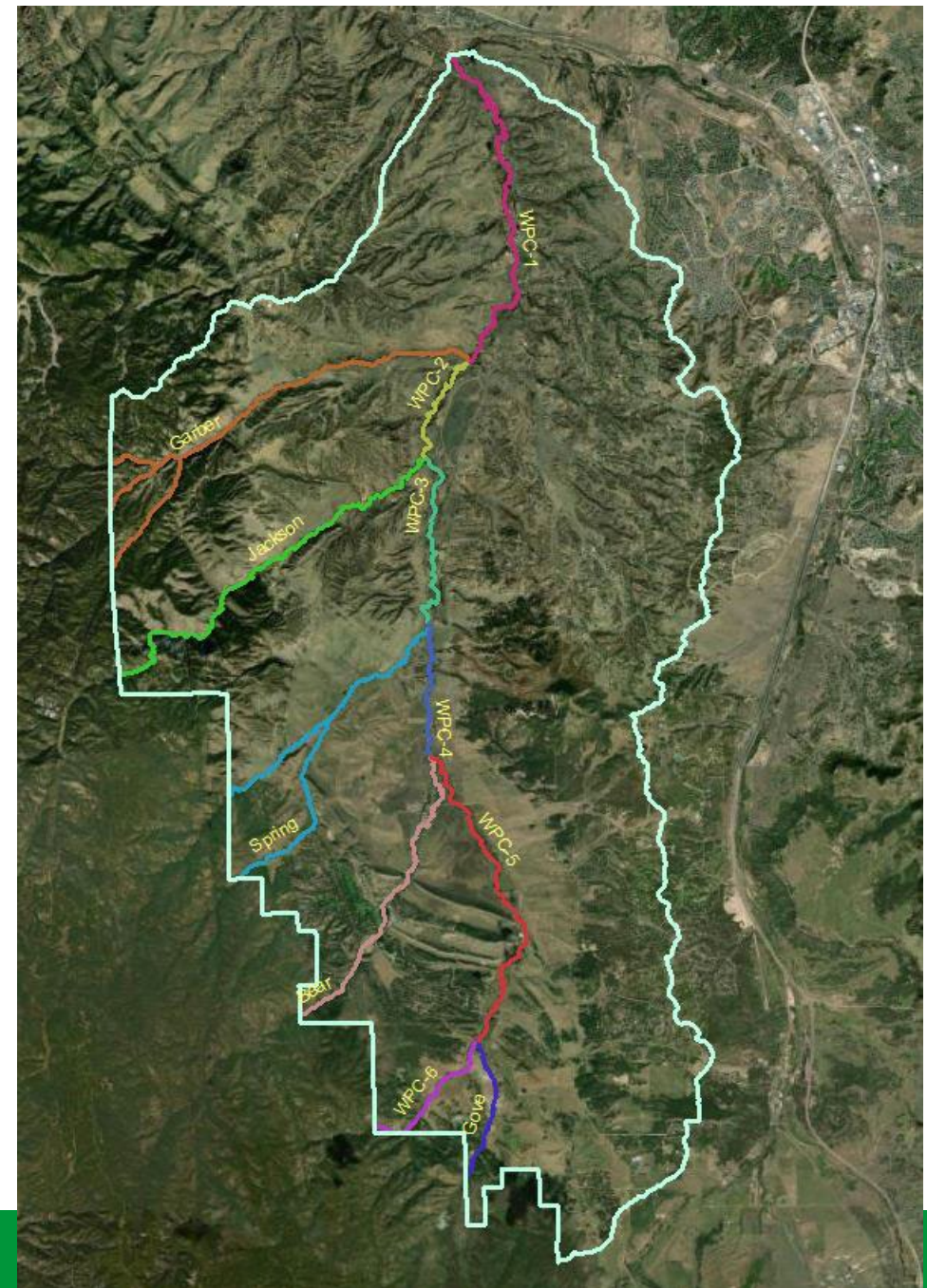
		Bankfull width	Flow	2/3	3/3
6/17/2019	Below Bear	15.1'	5.85 cfs	0.7	4.17
6/17/2019	Below Bear	15.7'	5.54 cfs	2.17	3.7
6/18/2019	Above Jackson	10.76'	7.86 cfs	1.0	1.11
6/18/2019	Above Jackson	14.3'	6.05 cfs	1.81	2.16
6/24/2020	Above Jackson	7.46'	1.05 cfs	0.93	1.65
Flow Recommendation (average)				1.3 cfs	2.6 cfs



West Plum Creek Preliminary R2Cross Results

Additional data collection in 2025
Jackson Creek to East Plum Creek:

		Bankfull width	Flow	2/3	3/3
6/18/2019	Below Jackson	13.0'	8.8 cfs	1.71	1.99
6/18/2019	Below Jackson	13.34'	7.9 cfs	1.49	2.23
6/24/2020	Below Jackson	12.05'	1.03 cfs	1.75	1.88
Flow Recommendation (average)				1.65 cfs	2.0 cfs



West Plum Creek -what's next?

- Continue outreach/engagement with local interests
- Work with CWCB to investigate water availability



LIVE LIFE
OUTSIDE

Pando Creek

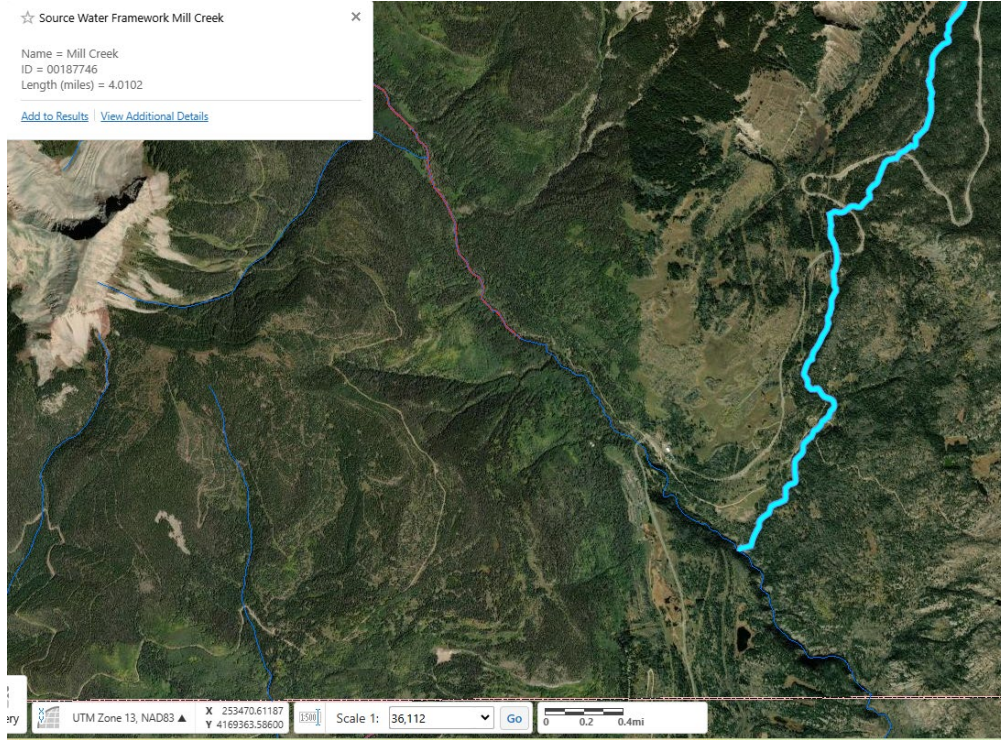
Colorado River Cutthroat Trout - San Juan Basin Lineage



- R2Cross collected in 2024
- Additional data collection needed in 2025

Mill Creek

Colorado River Cutthroat Trout - San Juan Basin Lineage

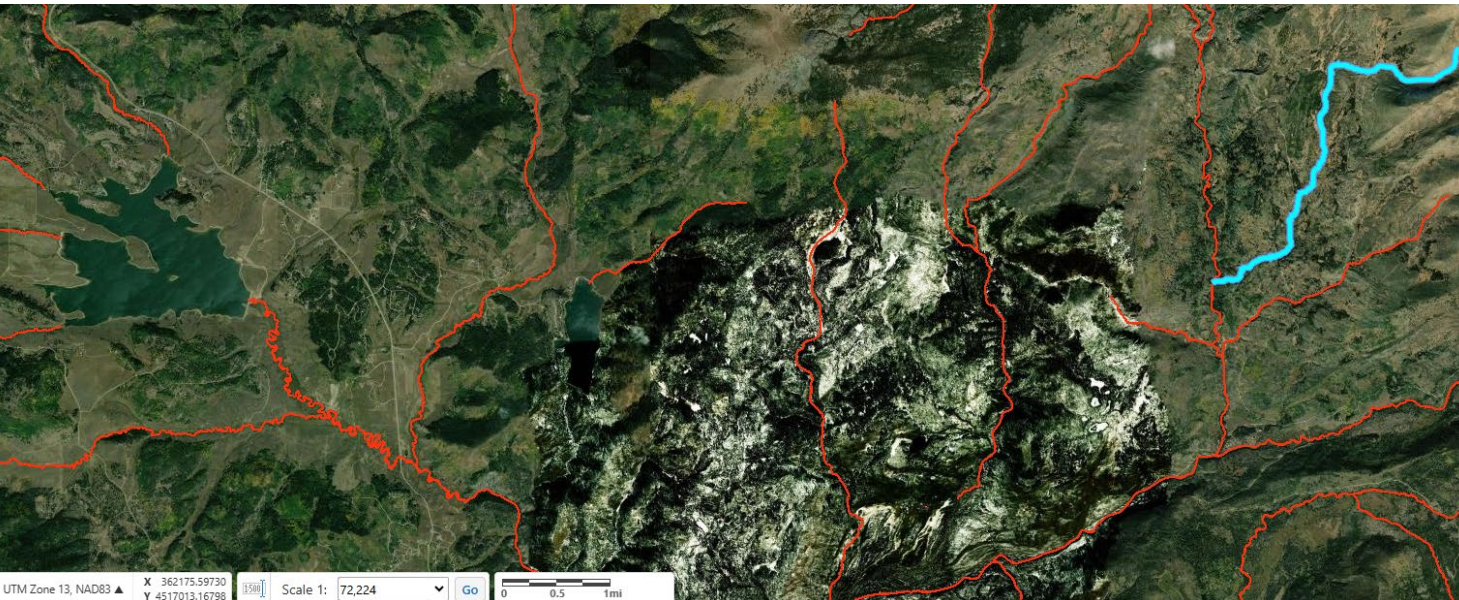


- Fishery surveys in 2024
- R2Cross data collection needed in 2025



Lost Dog Creek

- Colorado River Cutthroat Trout (Yampa Green lineage)
- CPW reclamation project
- Existing 5 cfs year-round

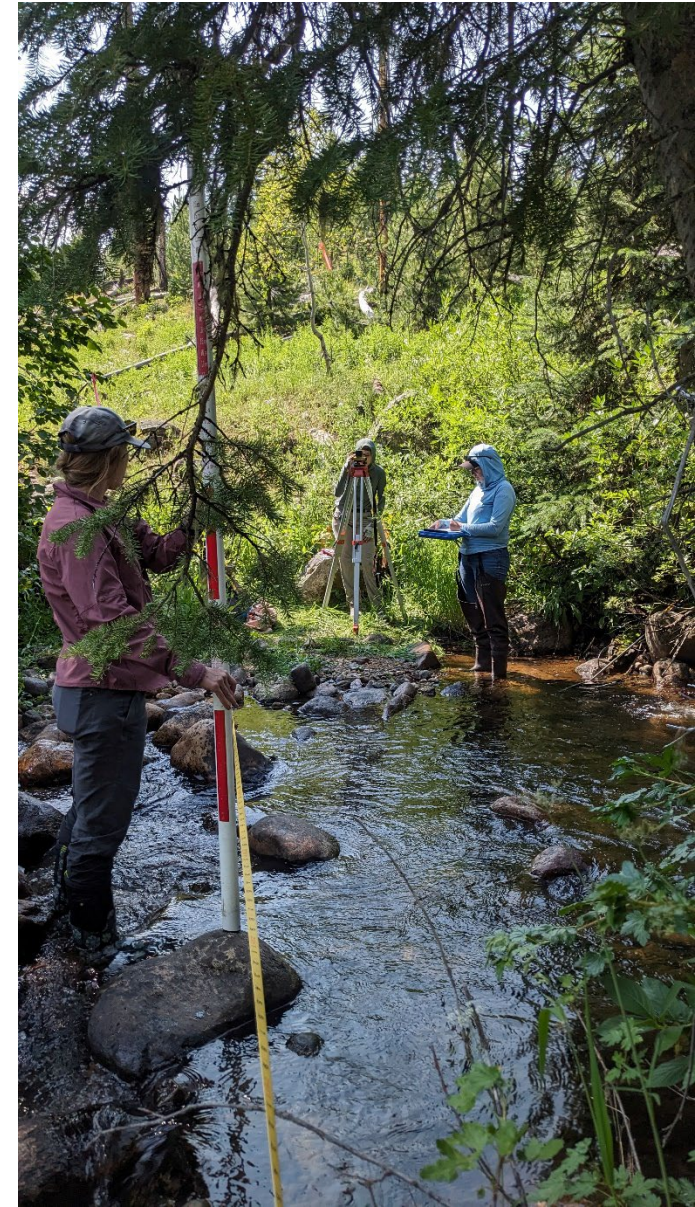


LIVE LIFE
OUTSIDE

Lost Dog Creek

	Bankfull width	Flow	2/3	3/3
7/26/2024	26.5'	1.65 cfs	2.46 cfs	8.56 cfs

- Additional data collection in 2025
- Seasonal enlargement ~8.6 cfs





Questions/Concerns/Comments?

970-252-6021

Katie.birch@state.co.us



LIVE LIFE
OUTSIDE