



United States Department of Agriculture

Colorado Snow Surveys

Water Conditions Monitoring Committee Meeting January 21st, 2025

NRCS Snow Survey and Water Supply Forecasting Program

Brian Domonkos

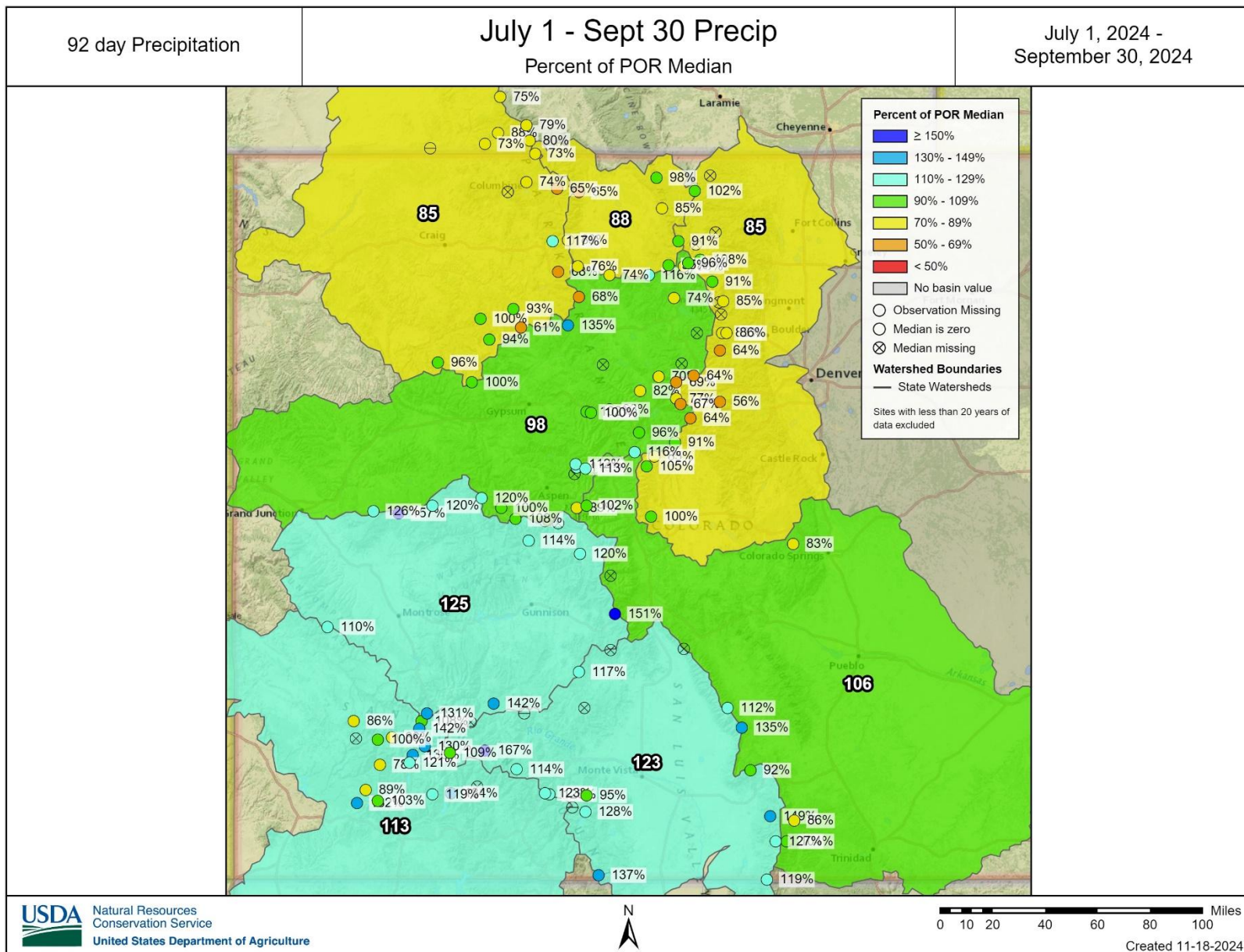
Hydrologist

Brian.Domonkos@usda.gov

720-544-2853

<http://www.nrcs.usda.gov/wps/portal/nrcs/main/co/snow/>

Last 3 Months of WY24 Precip





United States Department of Agriculture

Colorado Snow Surveys

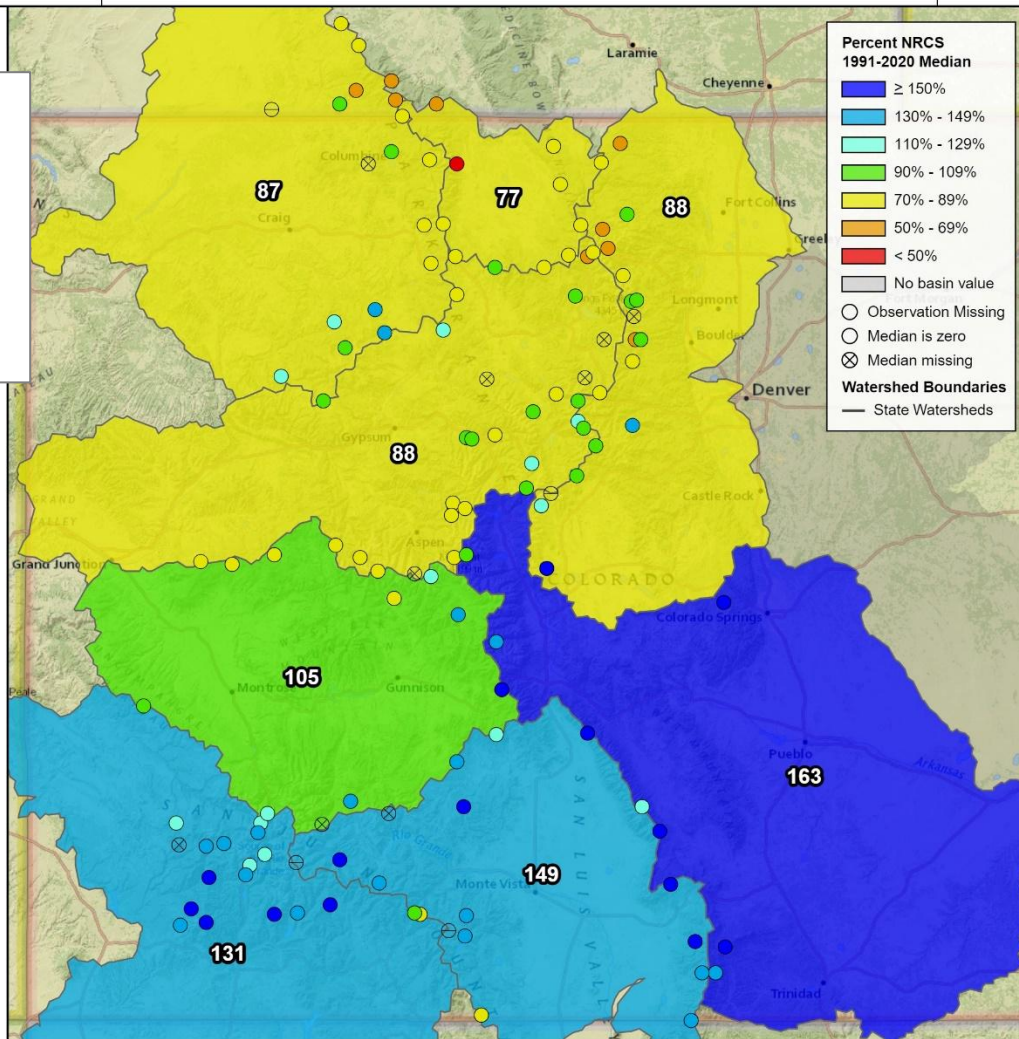
WY25 Precipitation - Nov 18th

Water Year to Date Precipitation

Precipitation CO
Percent NRCS 1991-2020 Median

October 1, 2024 -
November 17, 2024

Statewide
Precipitation
is 105% of
median
on Nov 18th.

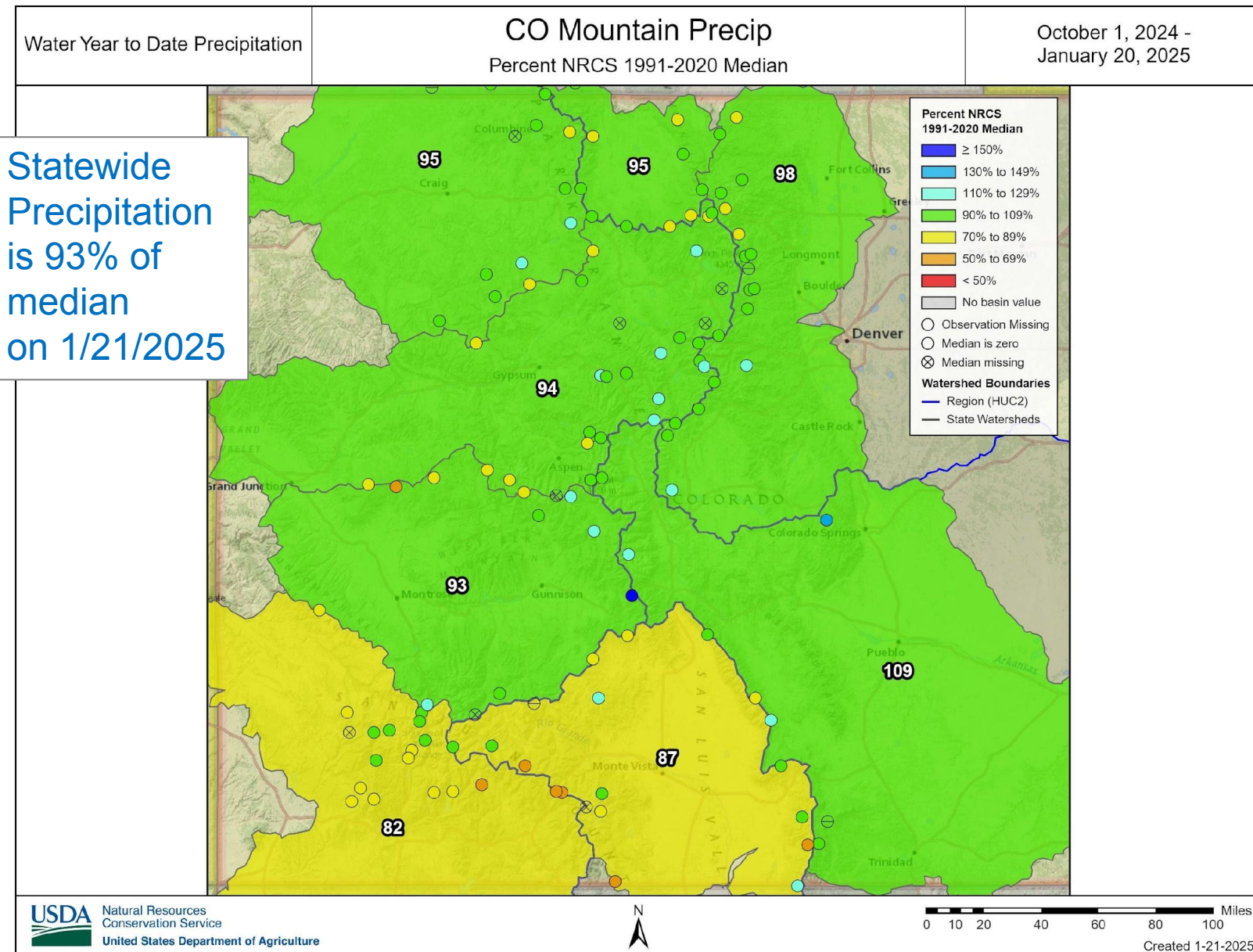


Natural Resources
Conservation Service
United States Department of Agriculture



0 10 20 40 60 80 100 Miles

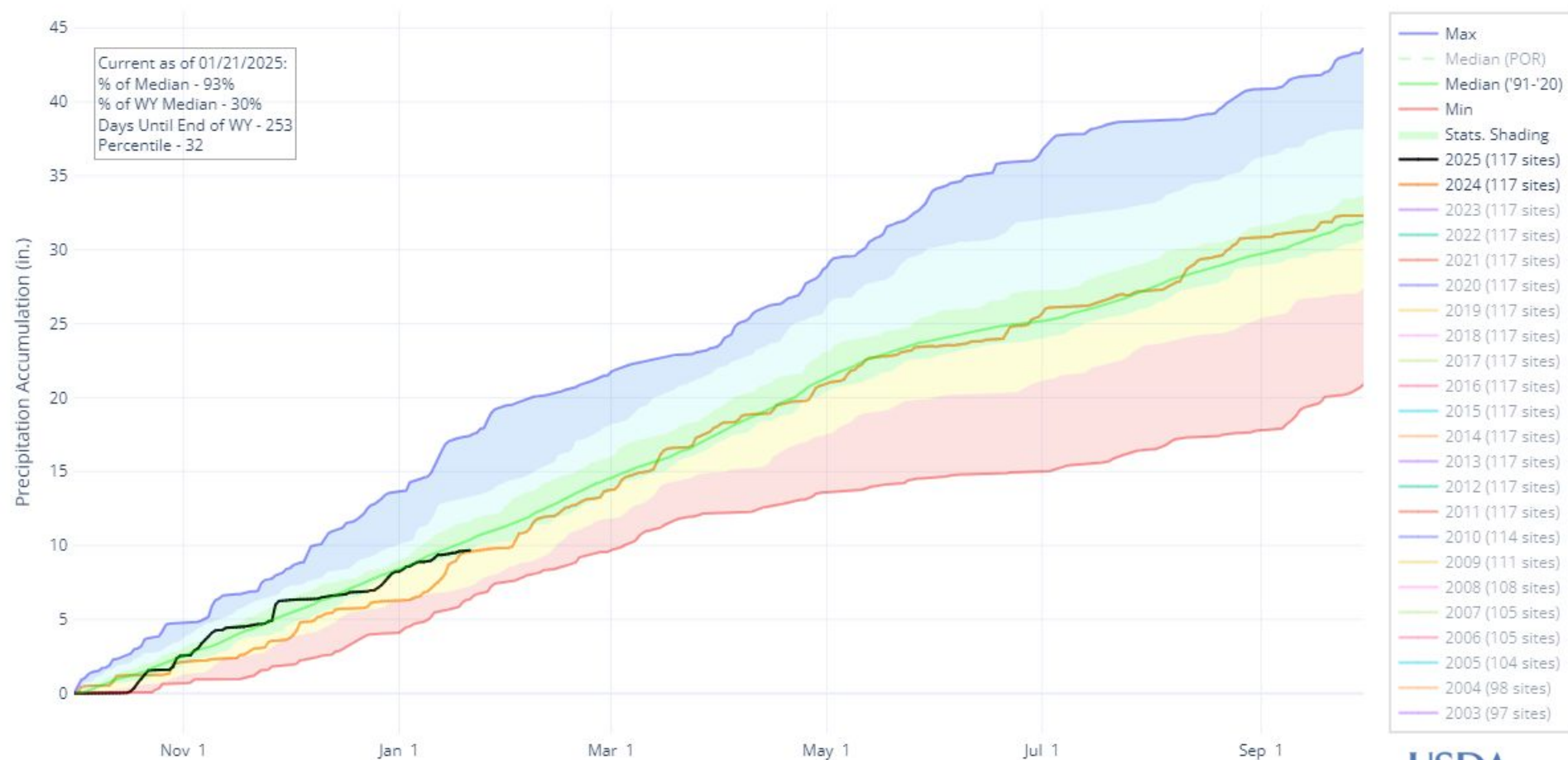
Created 11-18-2024



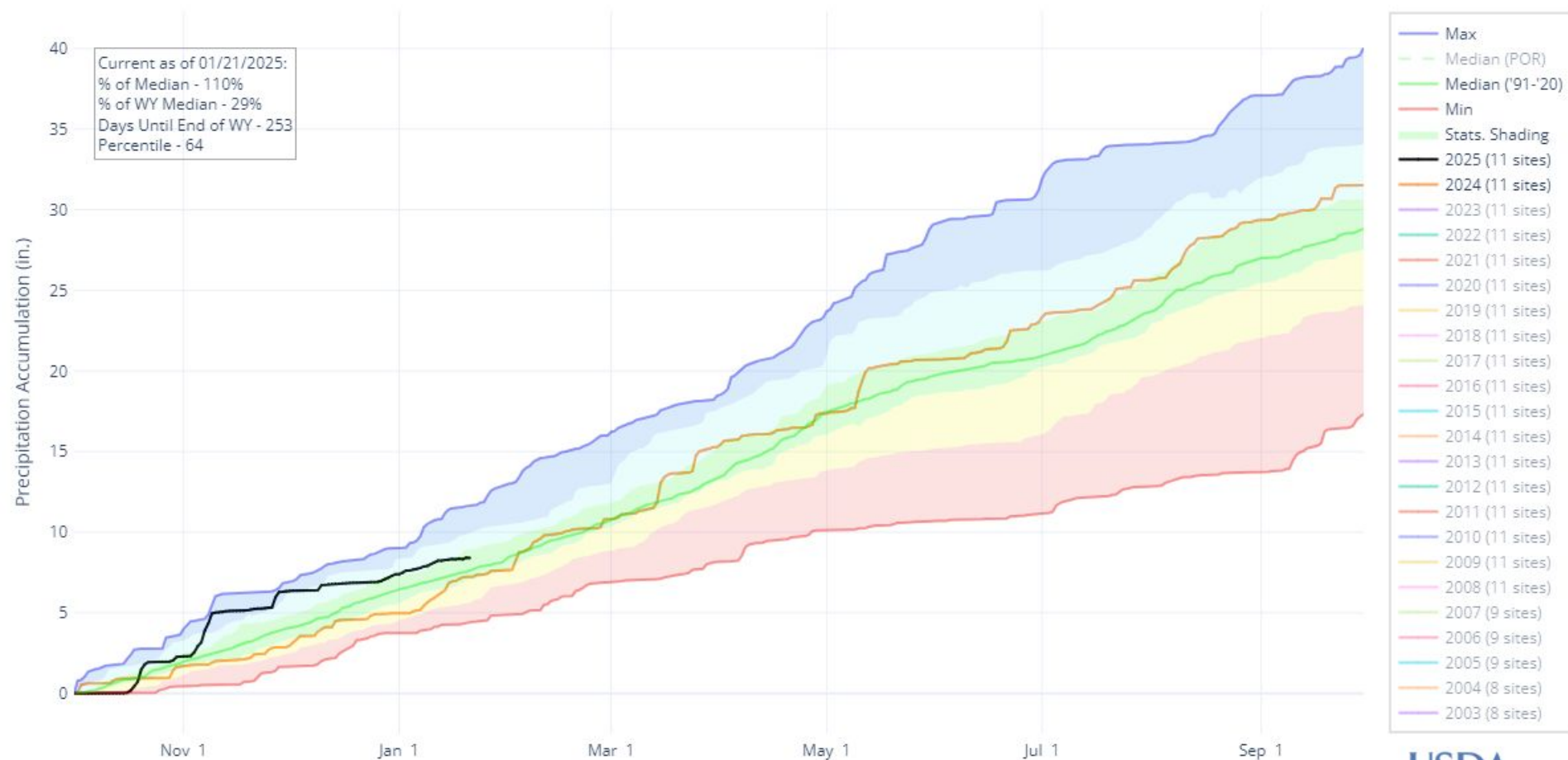


Colorado Snow Surveys

PRECIPITATION ACCUMULATION IN STATE OF COLORADO



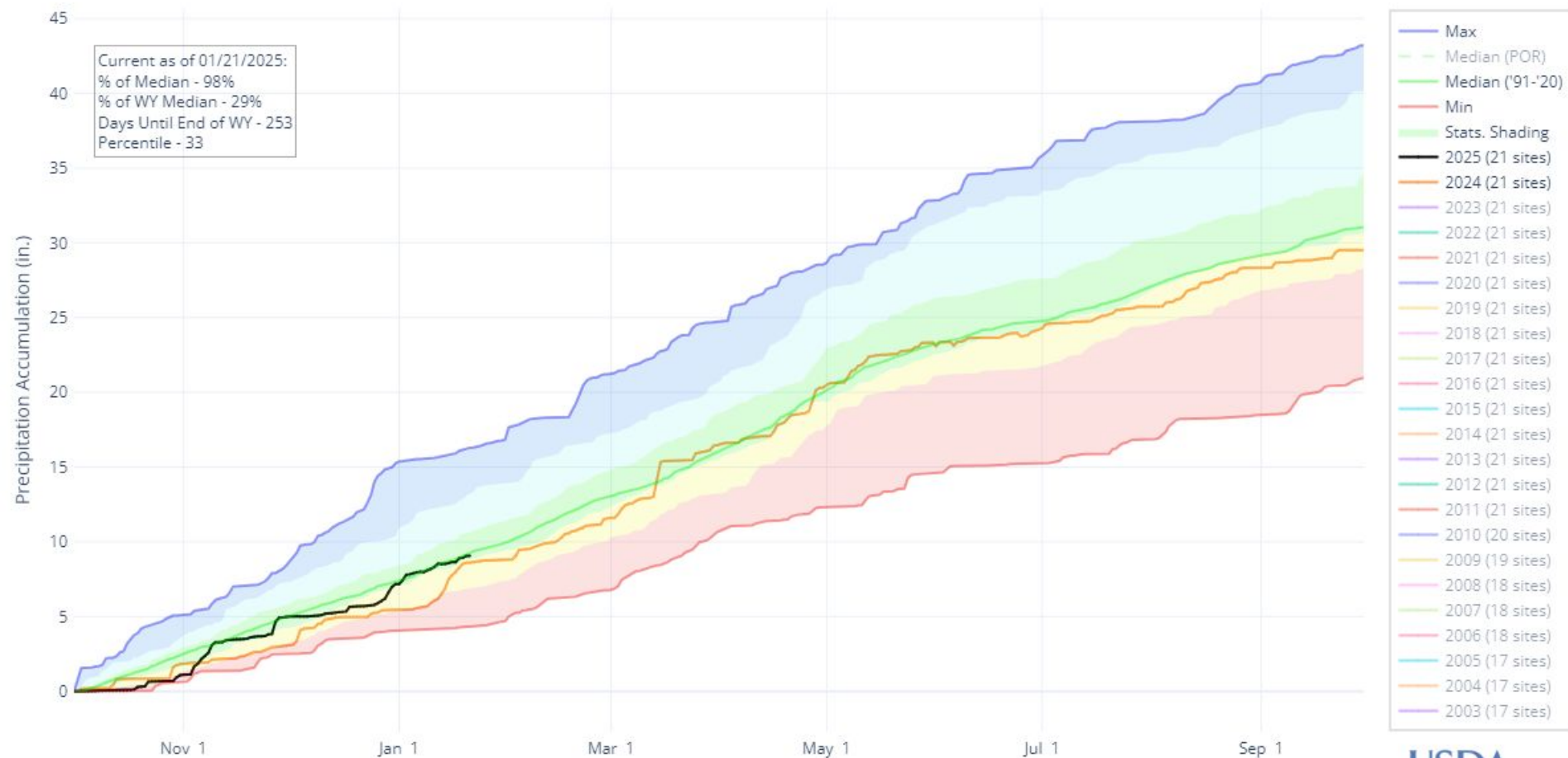
PRECIPITATION ACCUMULATION IN ARKANSAS



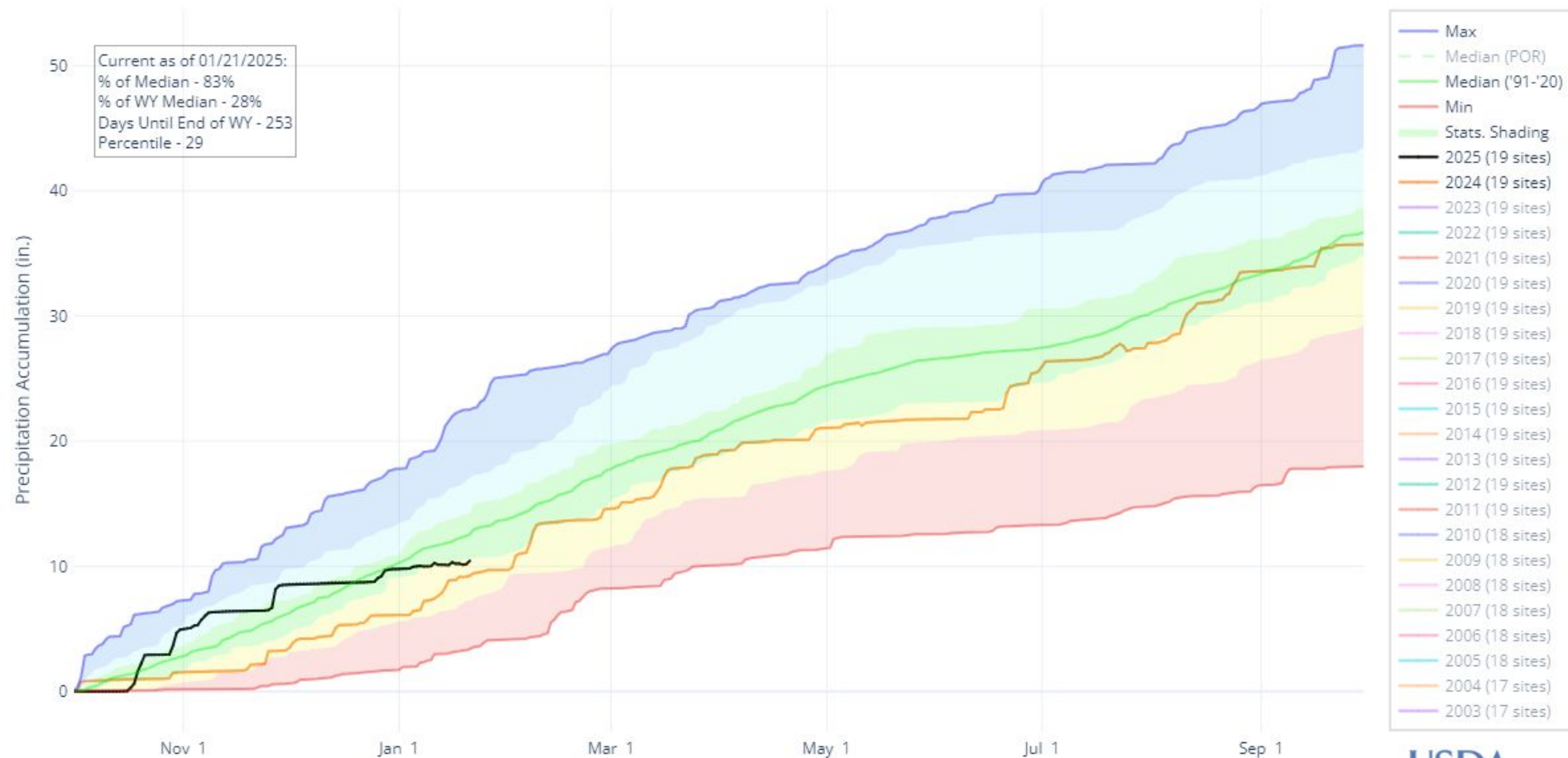


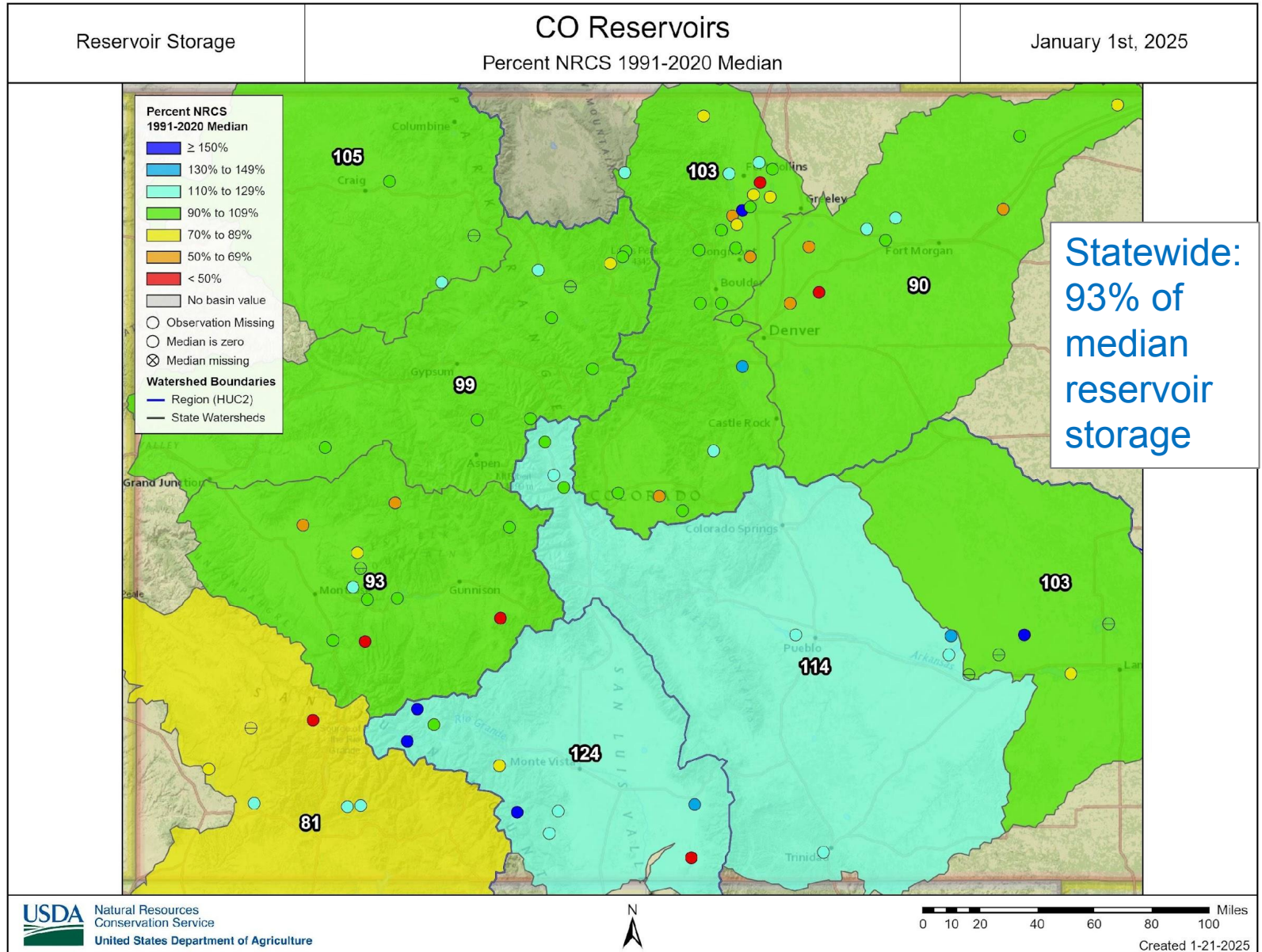
Colorado Snow Surveys

PRECIPITATION ACCUMULATION IN SOUTH PLATTE

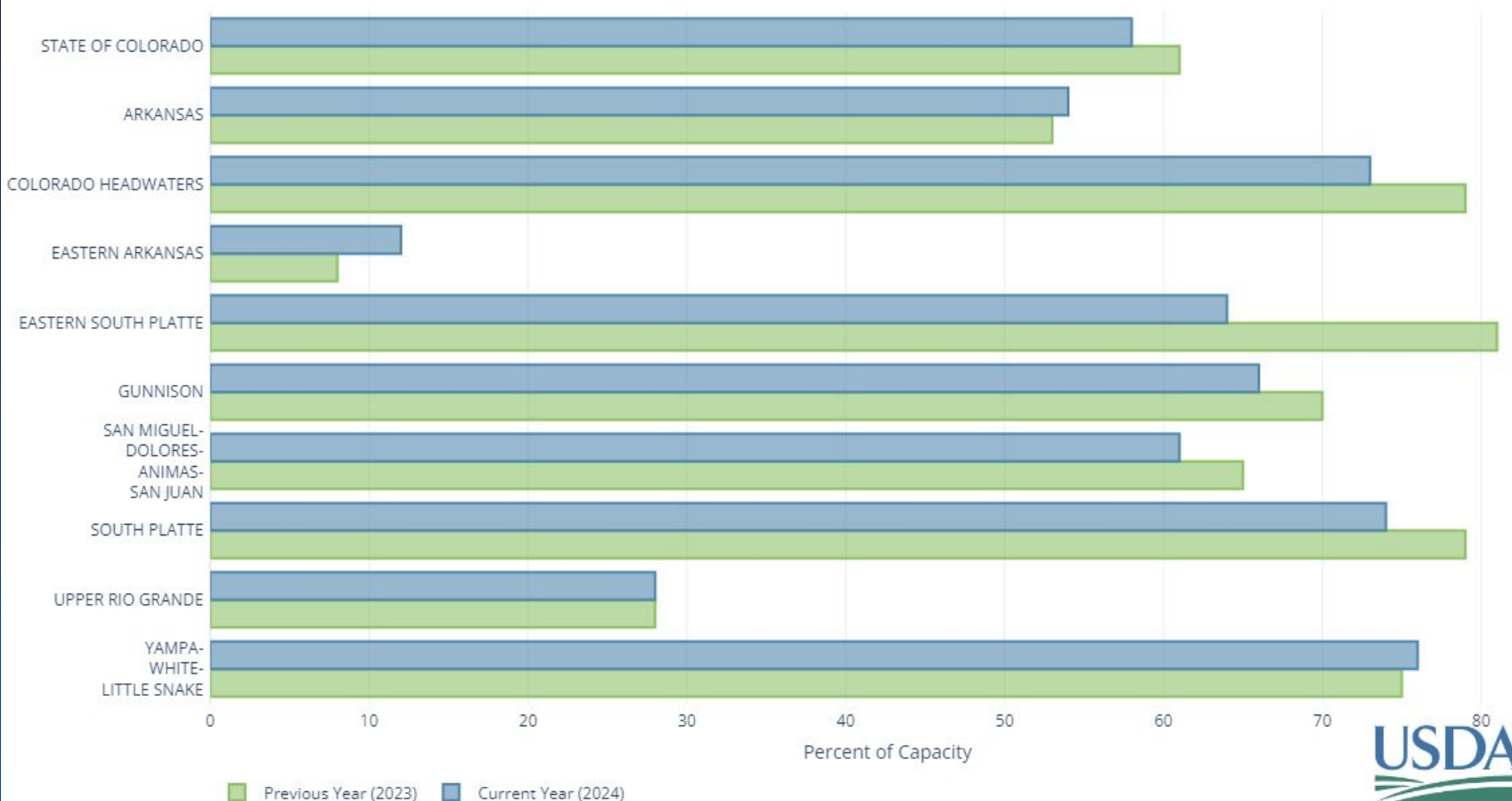


PRECIPITATION ACCUMULATION IN SAN MIGUEL-DOLORES-ANIMAS-SAN JUAN



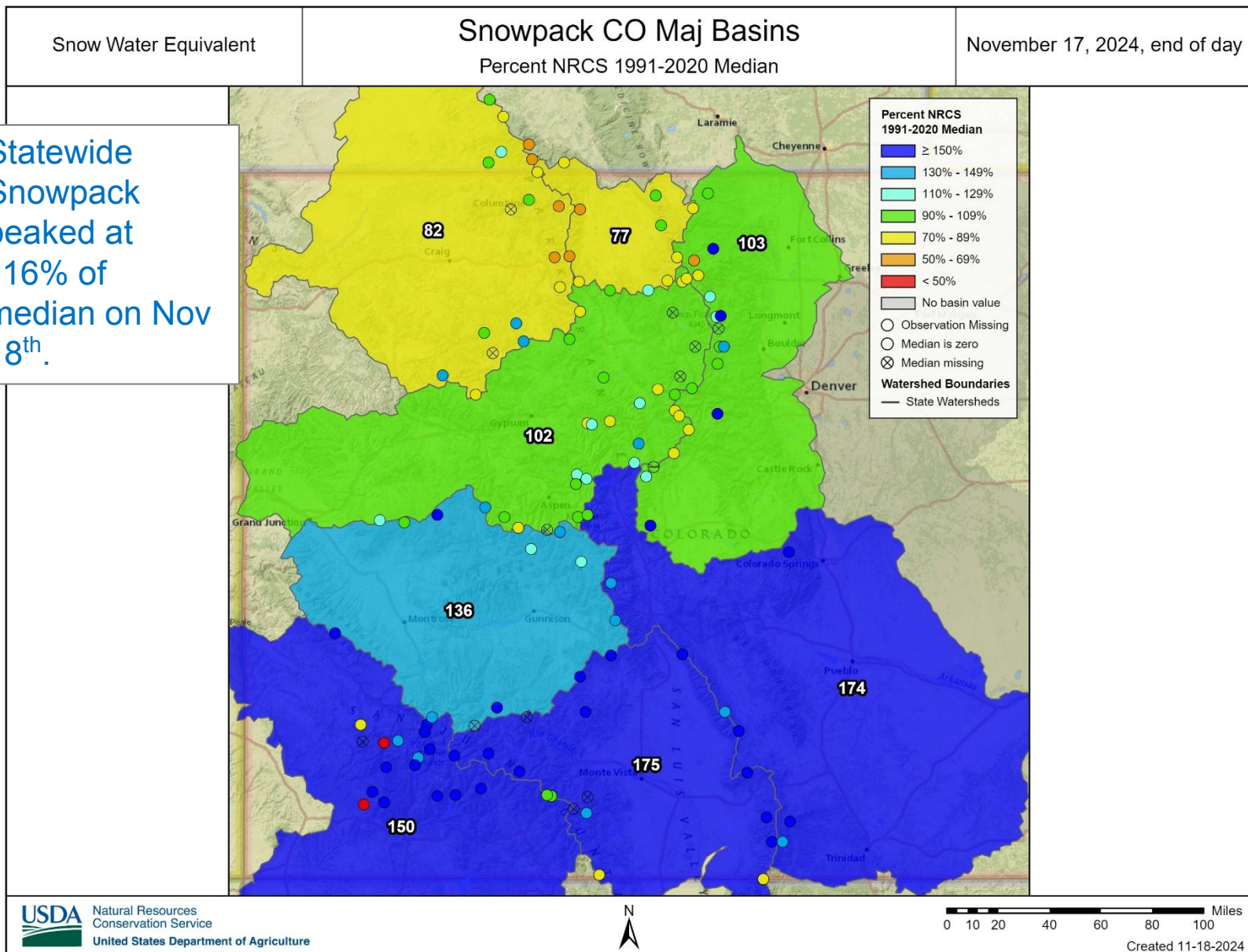


RESERVOIR STORAGE IN COLORADO
END OF DECEMBER 2024

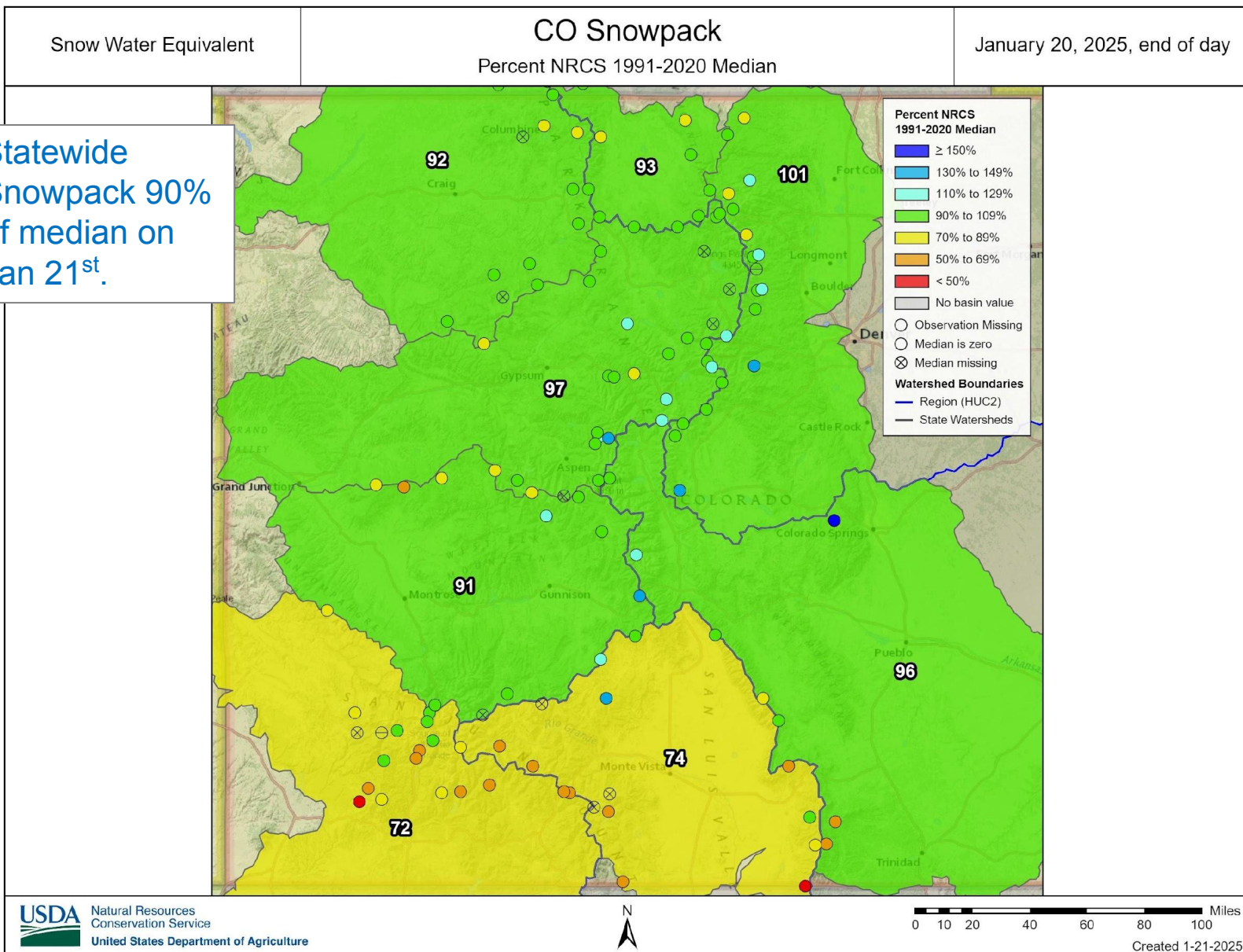


Snowpack

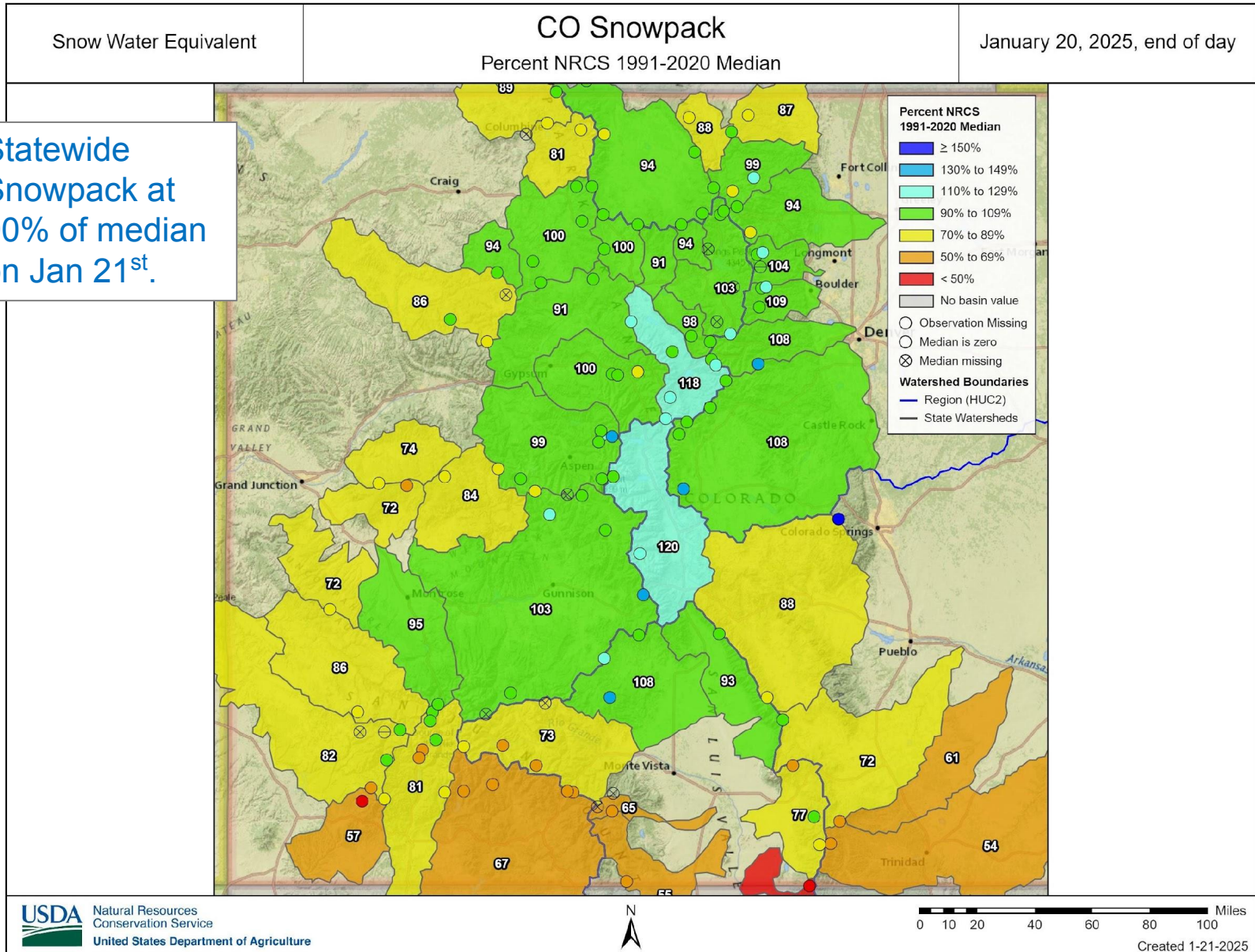
Statewide
Snowpack
peaked at
116% of
median on Nov
18th.



Statewide
Snowpack 90%
of median on
Jan 21st.



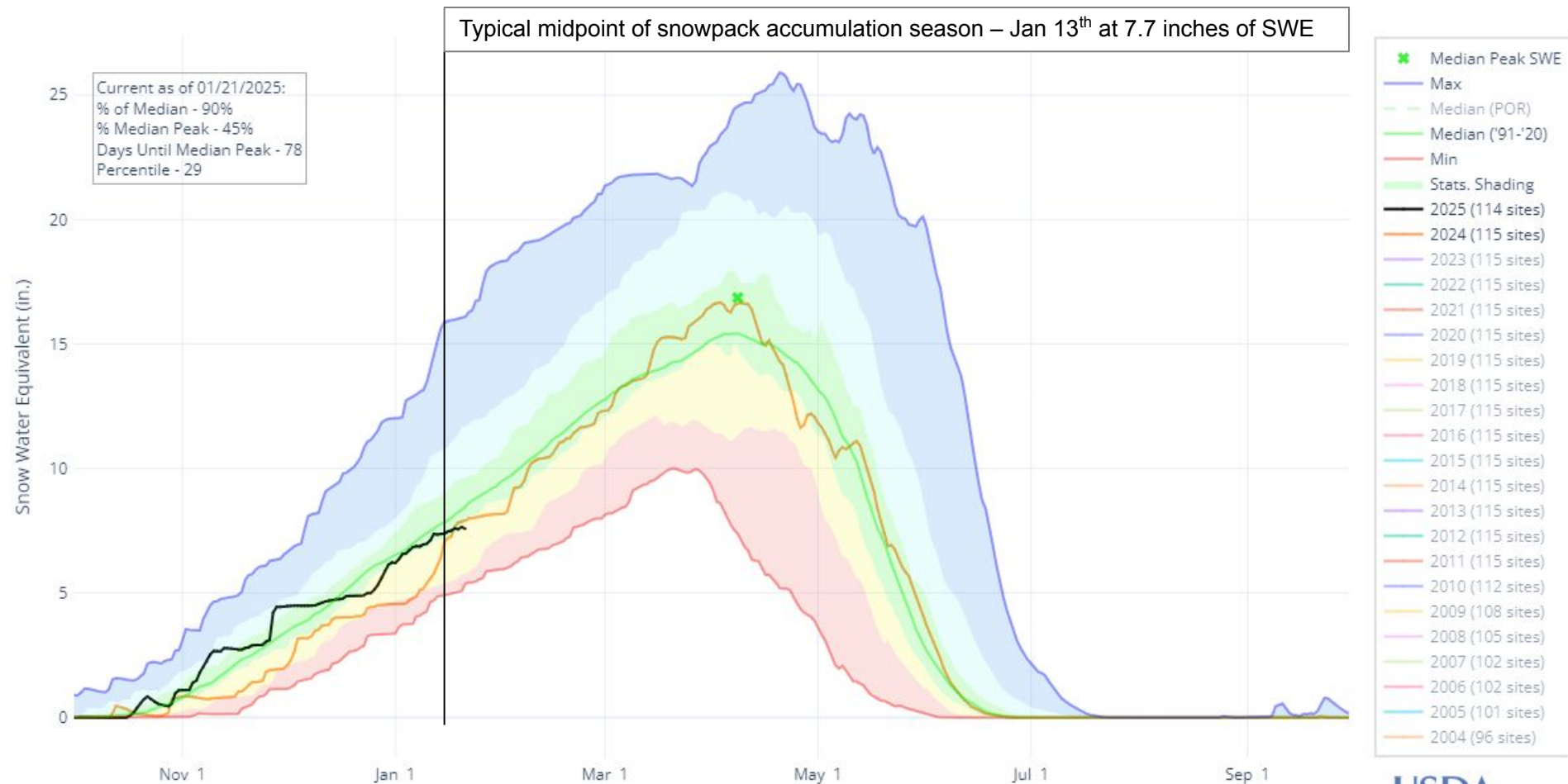
Statewide
Snowpack at
90% of median
on Jan 21st.



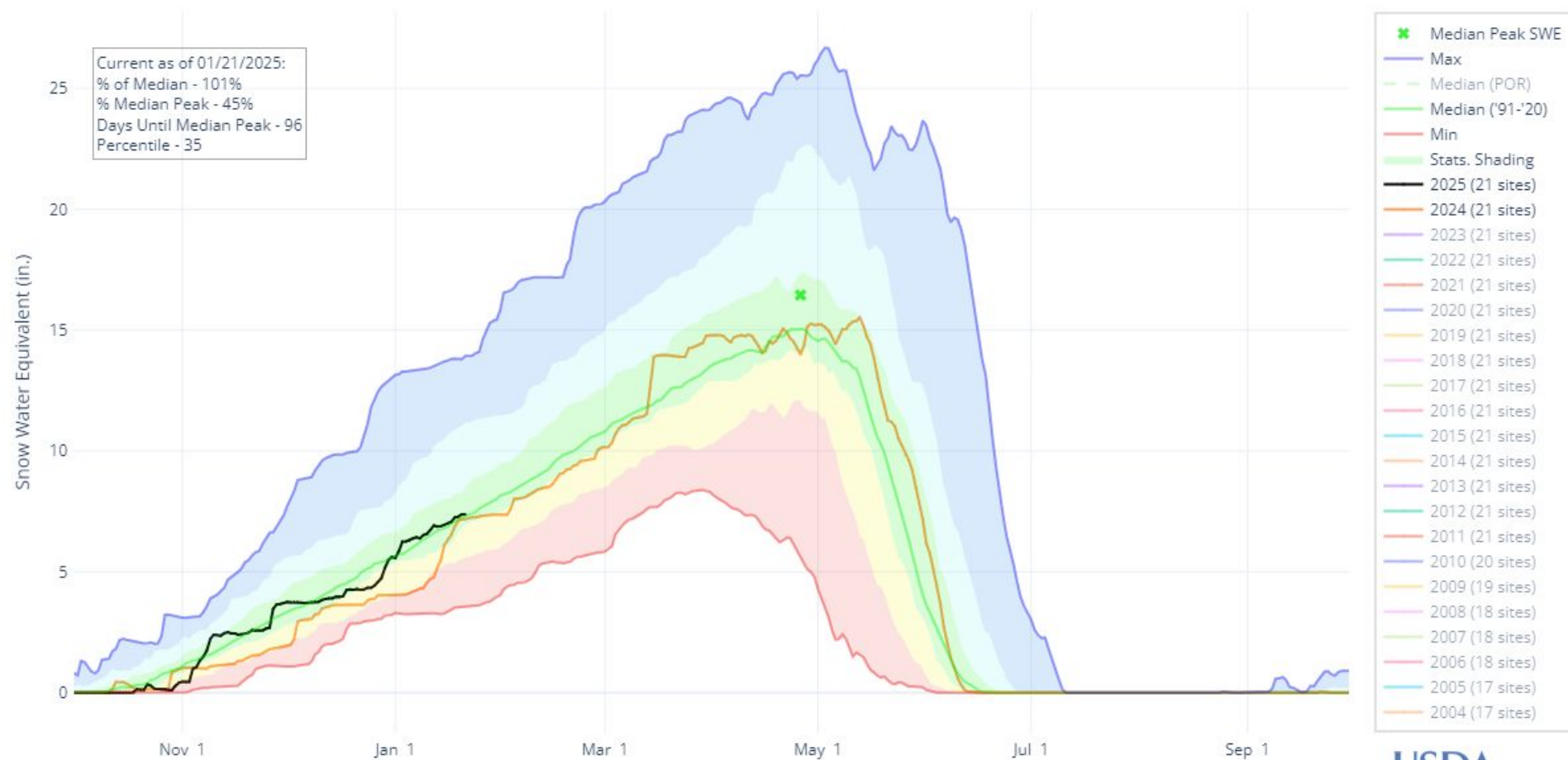
SNOW WATER EQUIVALENT IN STATE OF COLORADO

Typical midpoint of snowpack accumulation season – Jan 13th at 7.7 inches of SWE

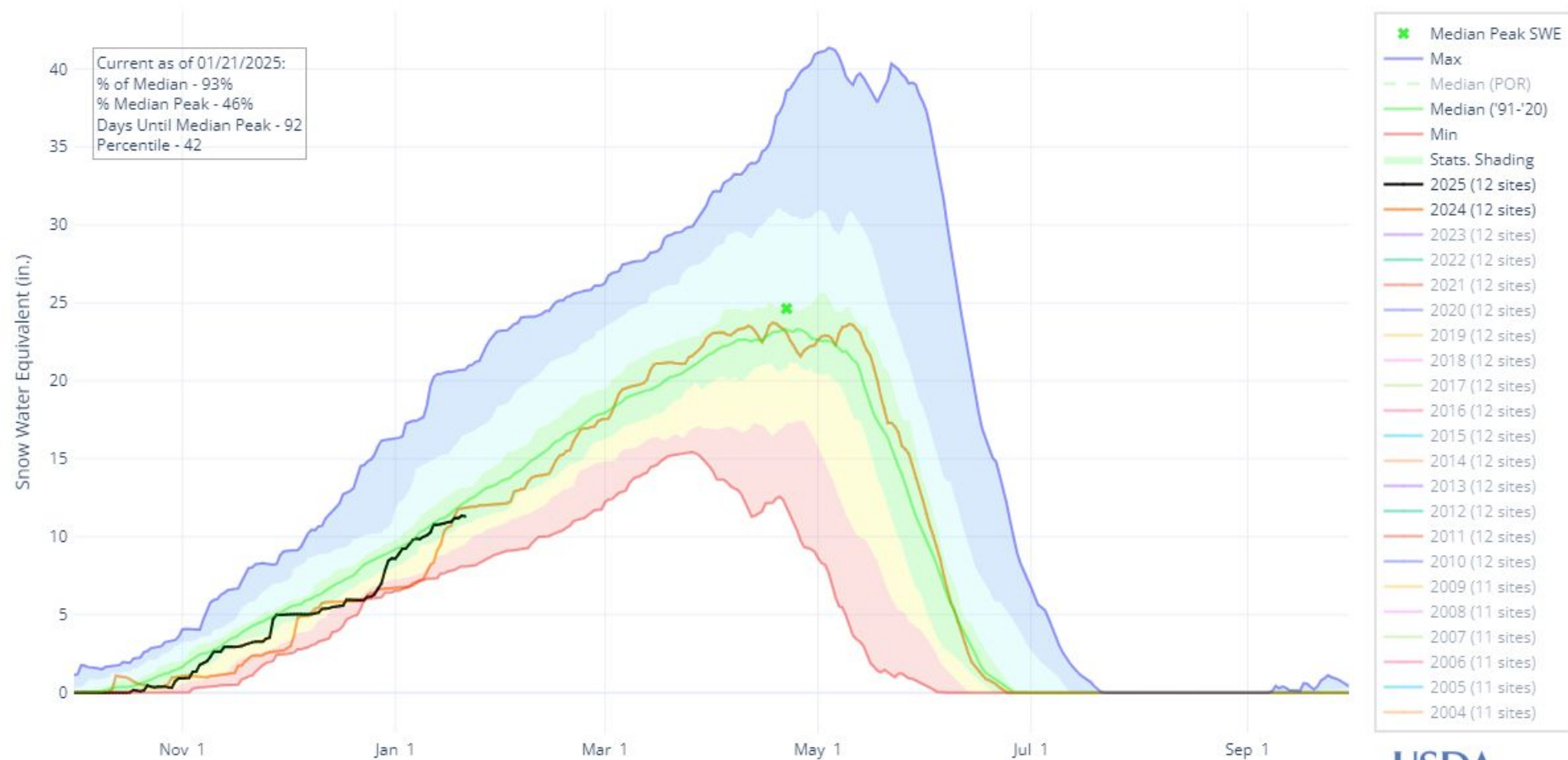
Current as of 01/21/2025:
 % of Median - 90%
 % Median Peak - 45%
 Days Until Median Peak - 78
 Percentile - 29



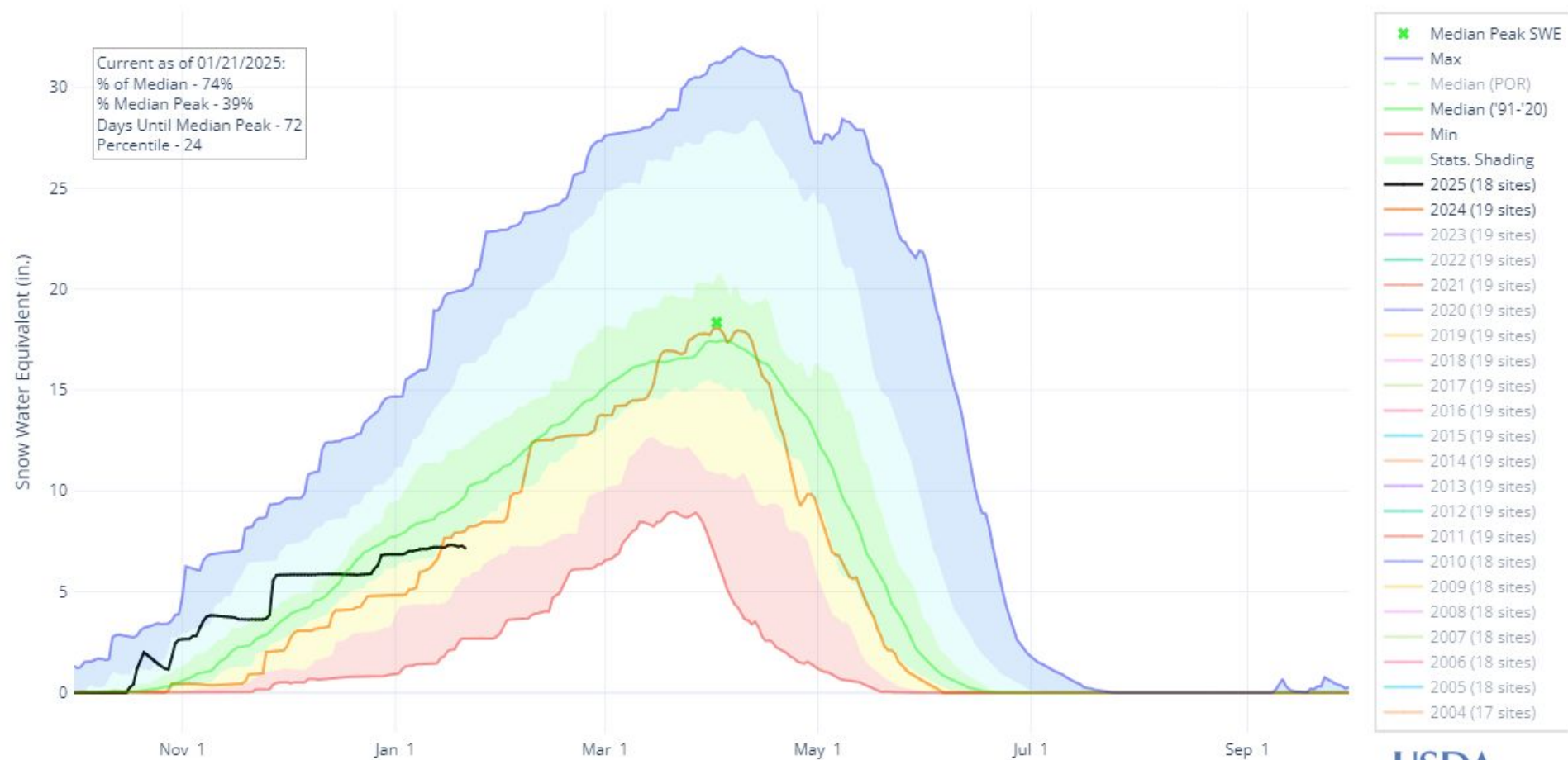
SNOW WATER EQUIVALENT IN SOUTH PLATTE

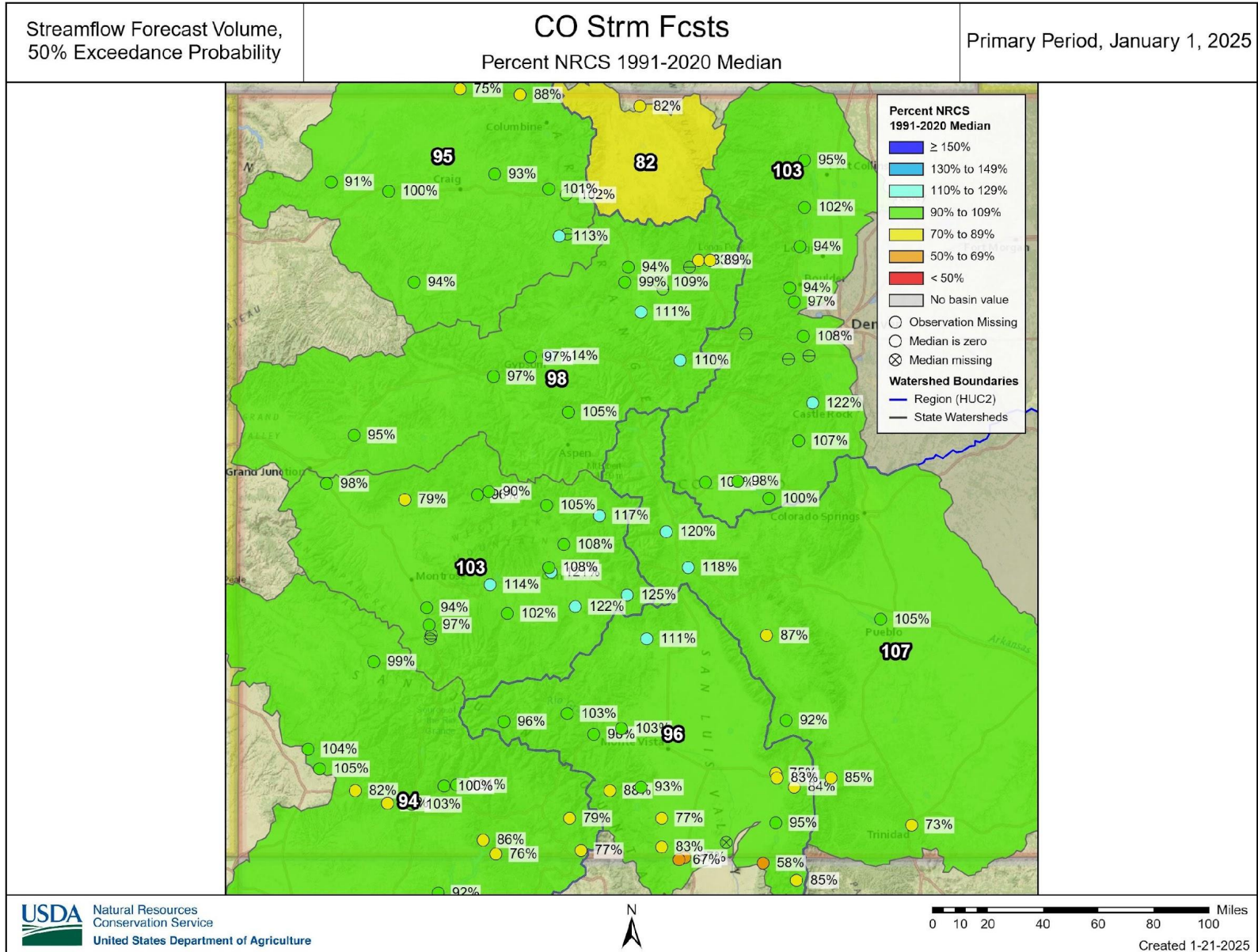


SNOW WATER EQUIVALENT IN LARAMIE AND NORTH PLATTE



SNOW WATER EQUIVALENT IN SAN MIGUEL-DOLORES-ANIMAS-SAN JUAN





Summary

- Statewide snowpack is currently at 90% of normal, down from higher numbers back early December
 - Better snowpack in South Platte (101% median)
 - Lackluster snowpack in the combined San Miguel, Dolores, Animas and San Juan basins (72%)
- Statewide mountain year-to-date precipitation is 93% of median
- Statewide reservoir storage is at 93% of median
- Spring and summer streamflow runoff forecasts range from
 - 125% of median at Tomichi Ck at Sargents
 - 73% of median at Purgatorie R. nr Trinidad
 - Larger statewide average near normal, but a lot can change
- Less than half of the winter remaining to accumulate snow



Non-Discrimination Statement:

In accordance with Federal civil rights law and U.S. Department of agriculture (USDA) civil rights regulations and policies, the USDA, its Agencies, offices, and employees, and institutions participating in or administering USDA programs are prohibited from discriminating based on race, color, national origin, religion, sex, gender identity (including gender expression), sexual orientation, disability, age, marital status, family/parental status, income derived from a public assistance program, political beliefs, or reprisal or retaliation for prior civil rights activity, in any program or activity conducted or funded by USDA (not all bases apply to all programs). Remedies and complaint filing deadlines vary by program or incident.

Persons with disabilities who require alternative means of communication for program information (e.g., Braille, large print, audiotape, American Sign Language, etc.) should contact the responsible Agency or USDA 's TARGET Center at (202) 720-2600 (voice and TTY) or contact USDA through the Federal Relay Service at (800) 877-8339. Additionally, program information may be made available in languages other than English.

To file a program discrimination complaint, complete the USDA Program Discrimination Complaint Form, AD-3027, found online at [How to File a Program Discrimination Complaint](#) and at any USDA office or write a letter addressed to USDA and provide in the letter all of the information requested in the form. To request a copy of the complaint form, call [866] 632-9992. Submit your completed form or letter to USDA by: (1) mail: U.S. Department of Agriculture, Office of the Assistant Secretary for Civil Rights, 1400 Independence Avenue, SW, Washington, D.C. 20250-9410; (2) fax: (202) 690-7442; or (3) email: program.intake@usda.gov.



United States Department of Agriculture

Colorado Snow Surveys

Water Conditions Monitoring Committee Meeting January 21st, 2025

NRCS Snow Survey and Water Supply Forecasting Program

Brian Domonkos

Hydrologist

Brian.Domonkos@usda.gov

720-544-2853

<http://www.nrcs.usda.gov/wps/portal/nrcs/main/co/snow/>