



United States Department of Agriculture

Colorado Snow Surveys

Water Conditions Monitoring Committee Meeting September 24th, 2024

NRCS Snow Survey and Water Supply Forecasting Program

Nagam Gill

Hydrologist

Nagam.Gill@usda.gov

<http://www.nrcs.usda.gov/wps/portal/nrcs/main/co/snow/>



United States Department of Agriculture

Colorado Snow Surveys

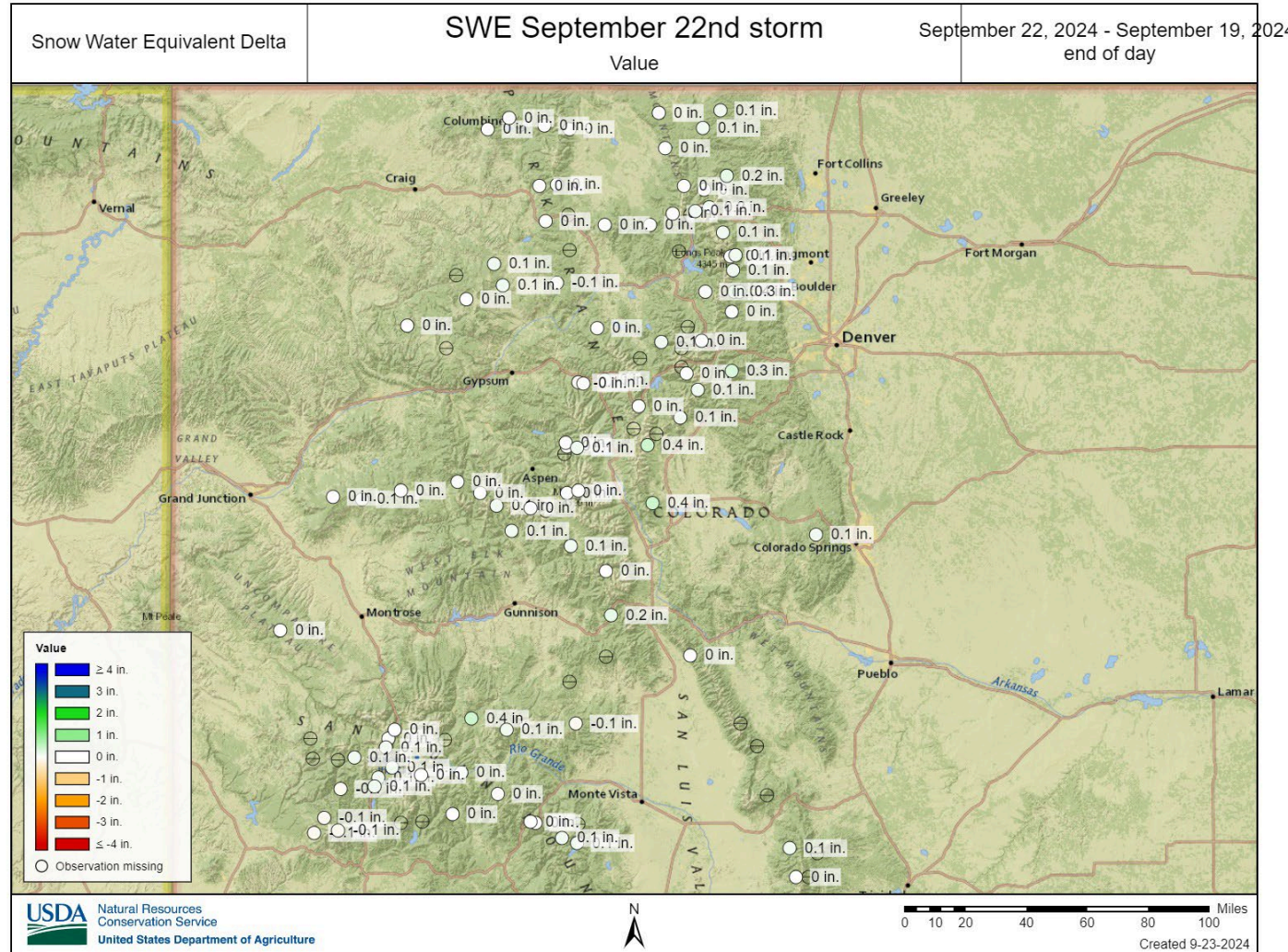
Late season swe

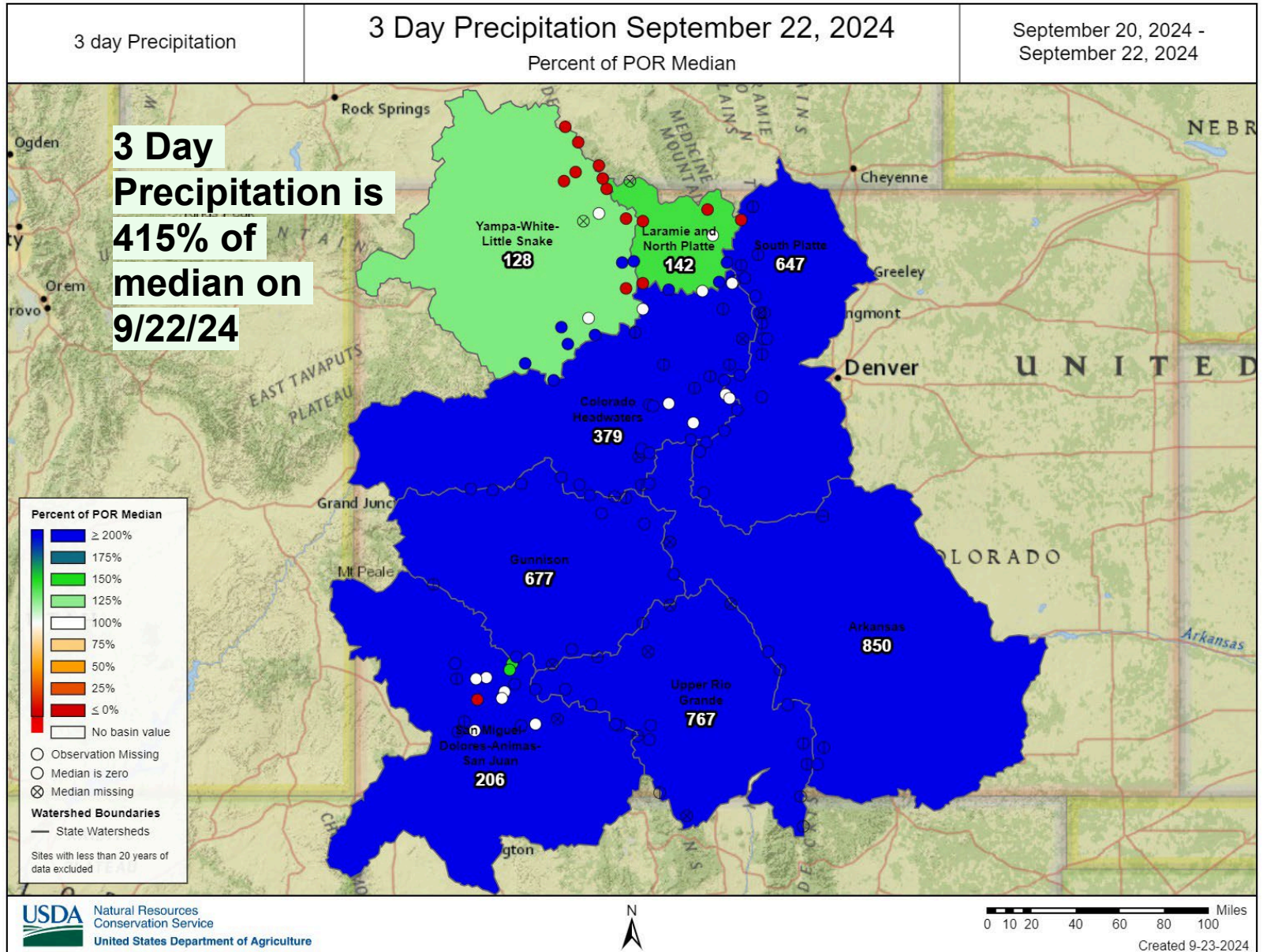
**0.1" to 0.4" swe
1 to 3" SD**

**0.4" at:
University Camp 10360'
Rough & Tumble 10432'
Slumgullion 11560'
Buckskin Joe 11166'**

**0.3" at:
Echo Lake 10694'
Niwot 9979'**

**0.2" at:
Hourglass 9417'
Porphyry Creek 10788'
Willow Park 10732'**







United States Department of Agriculture

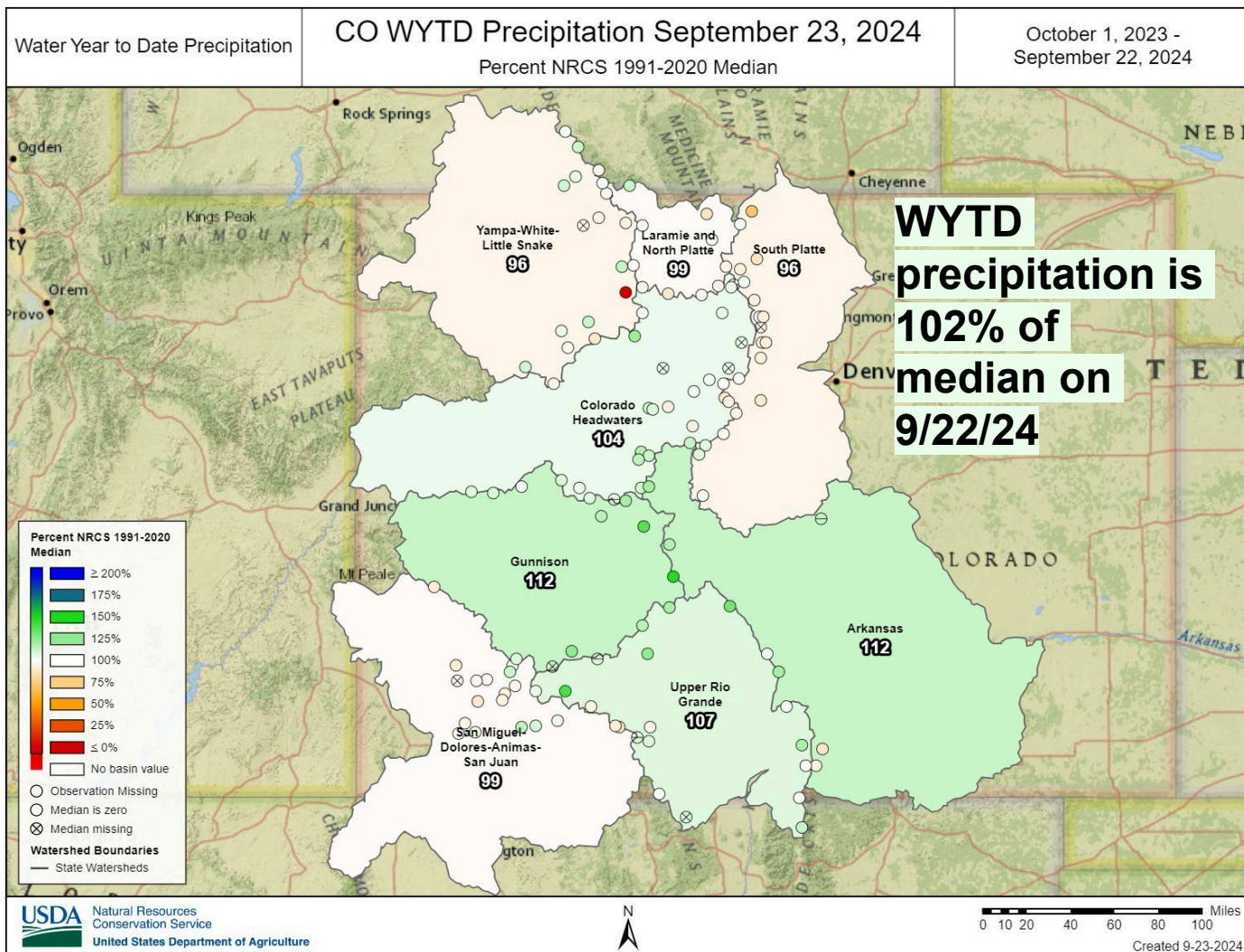
Colorado Snow Surveys

Range 18.8 - 58.4"

25th percentile 26.28"

50th percentile 30.75"

75th percentile 36.05"





United States Department of Agriculture

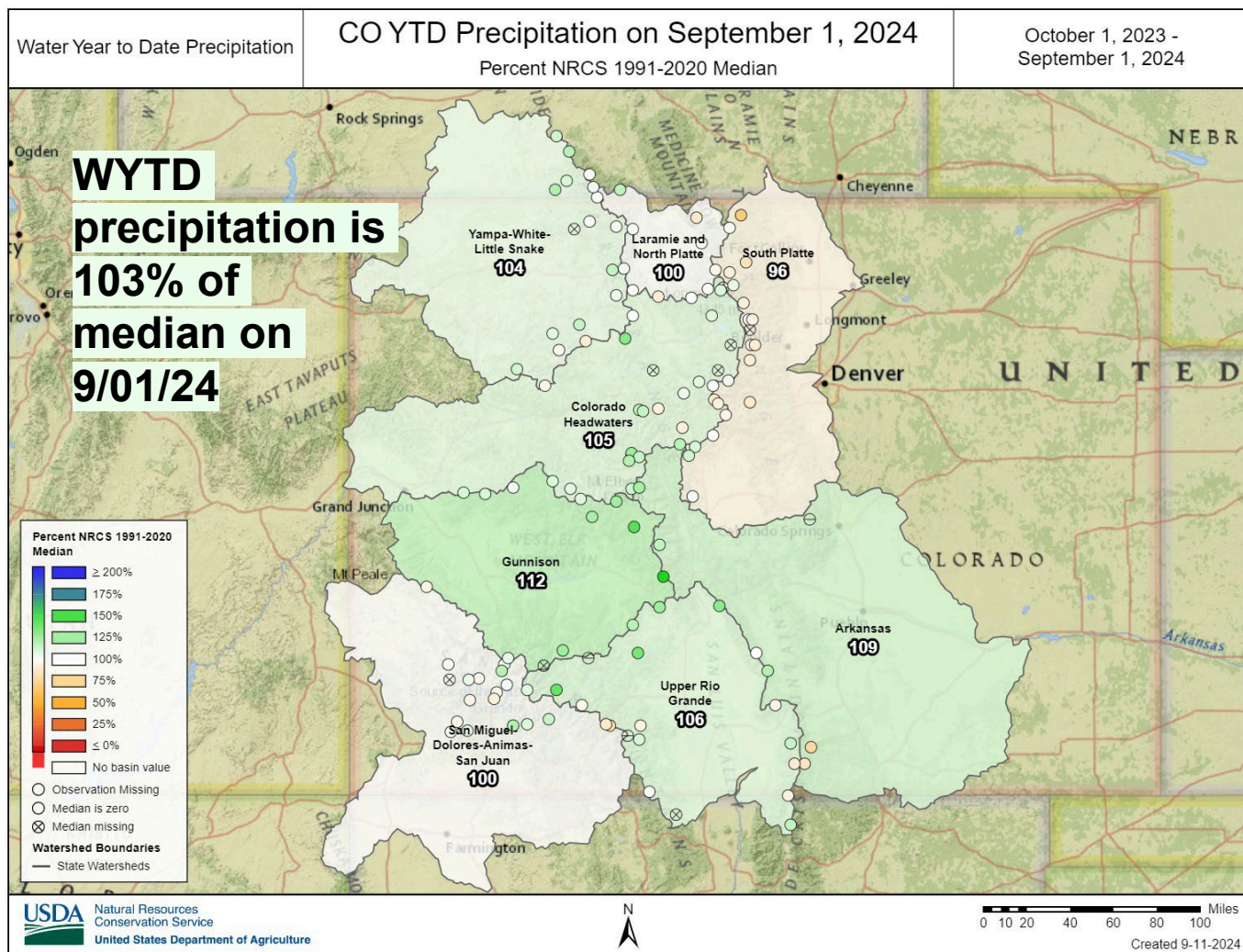
Colorado Snow Surveys

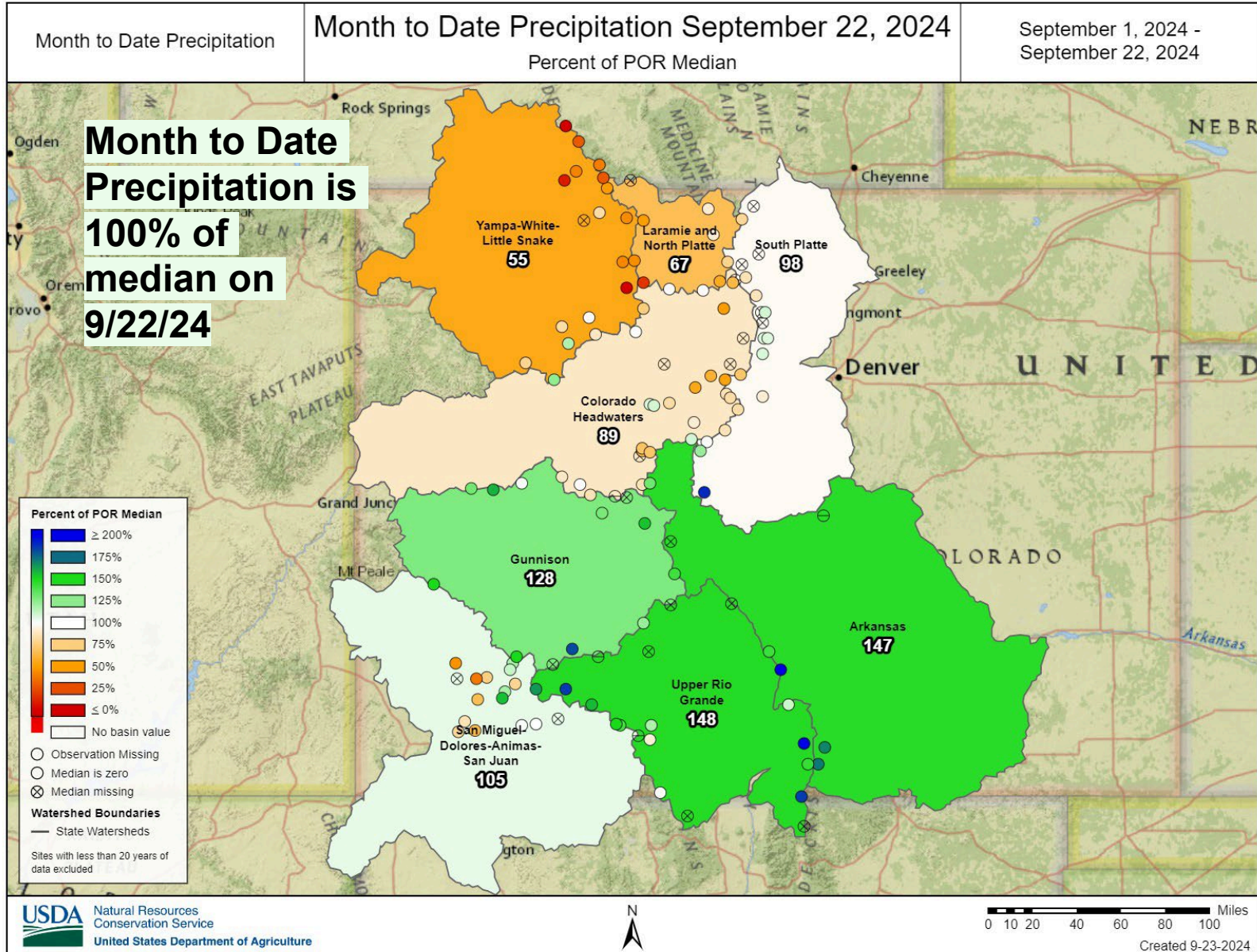
Range 18.3 – 57.5”

25th percentile 24.8”

50th percentile 28.95”

75th percentile 33.85”

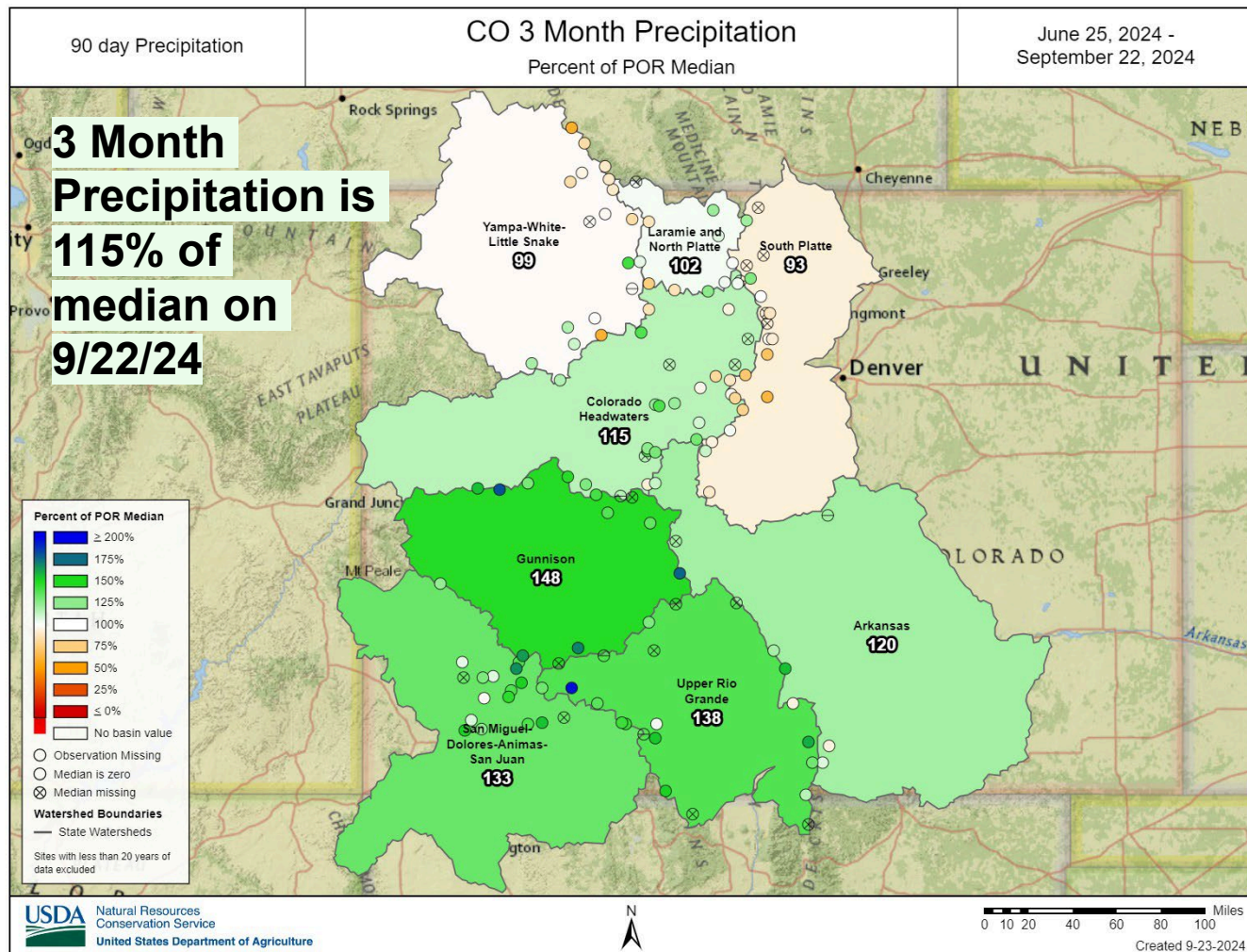






Colorado Snow Surveys

25th percentile 5"
50th percentile 6.1"
75th percentile 7.2"





United States Department of Agriculture

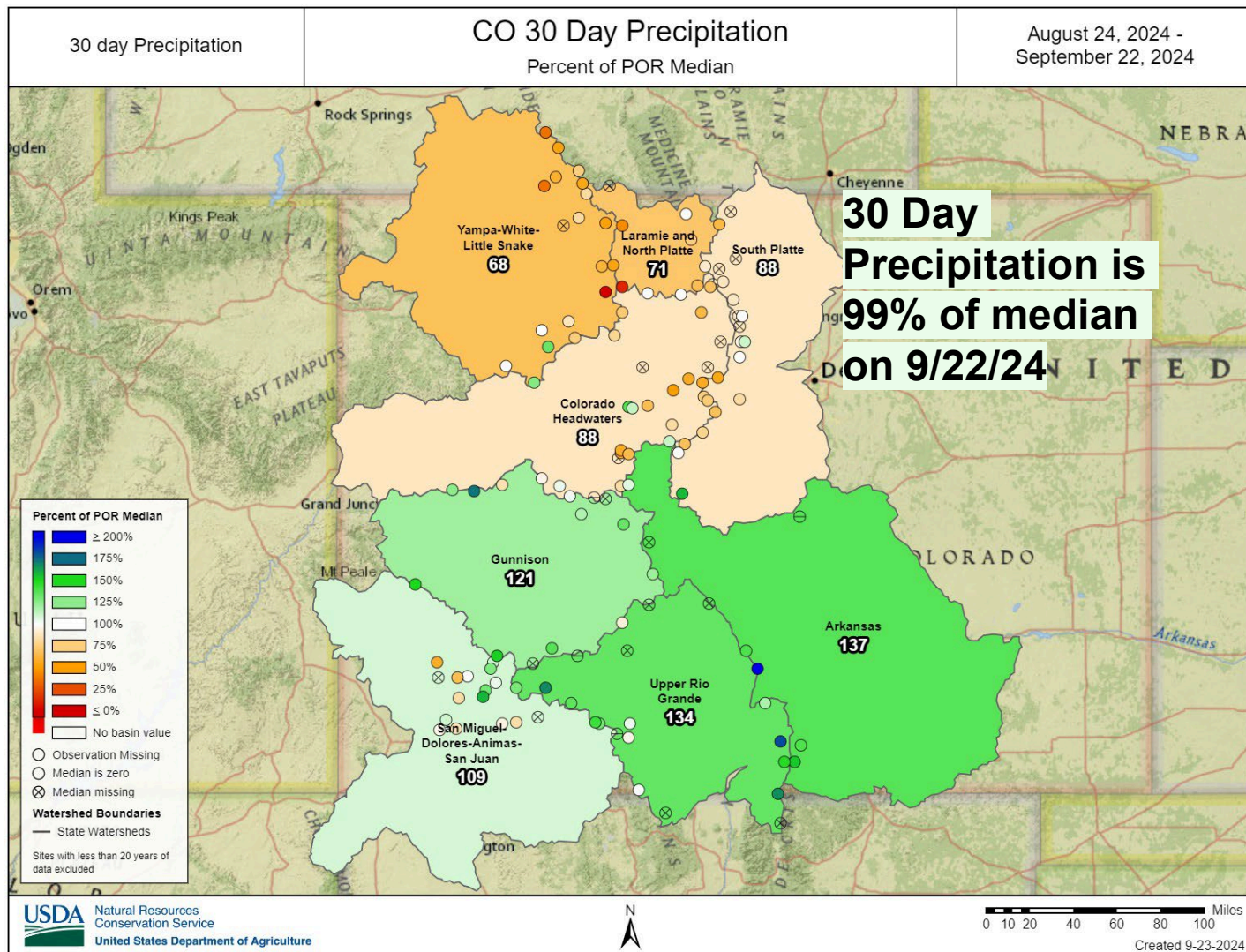
Colorado Snow Surveys

Range 1.2" – 4.1"

25th percentile 1.8"

50th percentile 2.1"

75th percentile 2.6"





Colorado Snow Surveys

PRECIPITATION ACCUMULATION IN STATE OF COLORADO

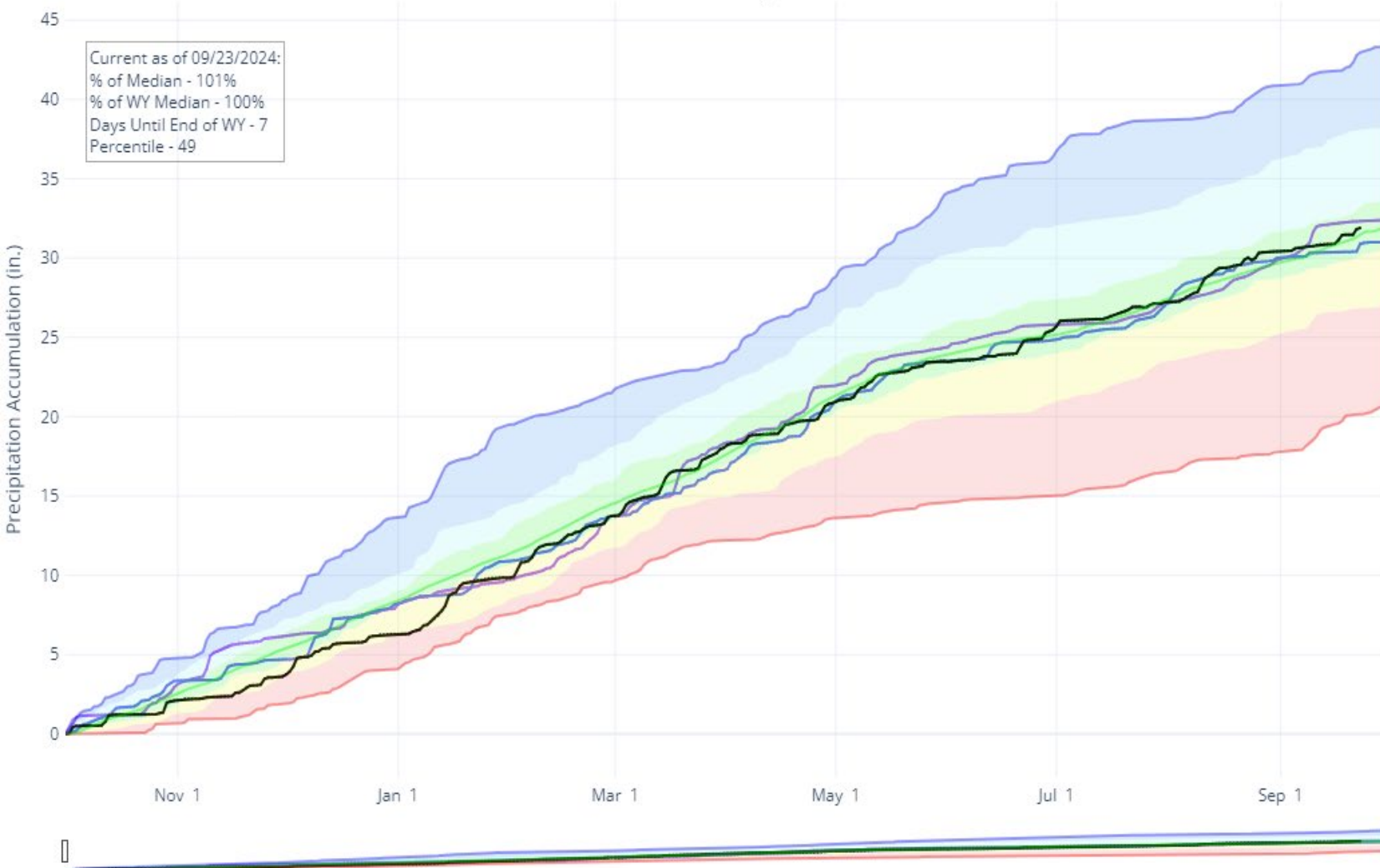
Reset Range

[Link to data: CSV / JSON](#)

Current as of 09/23/2024:
% of Median - 101%
% of WY Median - 100%
Days Until End of WY - 7
Percentile - 49

Station List

- Max
- Median ('91-'20)
- Min
- Stats. Shading
- 2024 (117 sites)
- 2010 (114 sites)
- 2003 (97 sites)



PRECIPITATION ACCUMULATION IN GUNNISON

Reset Range

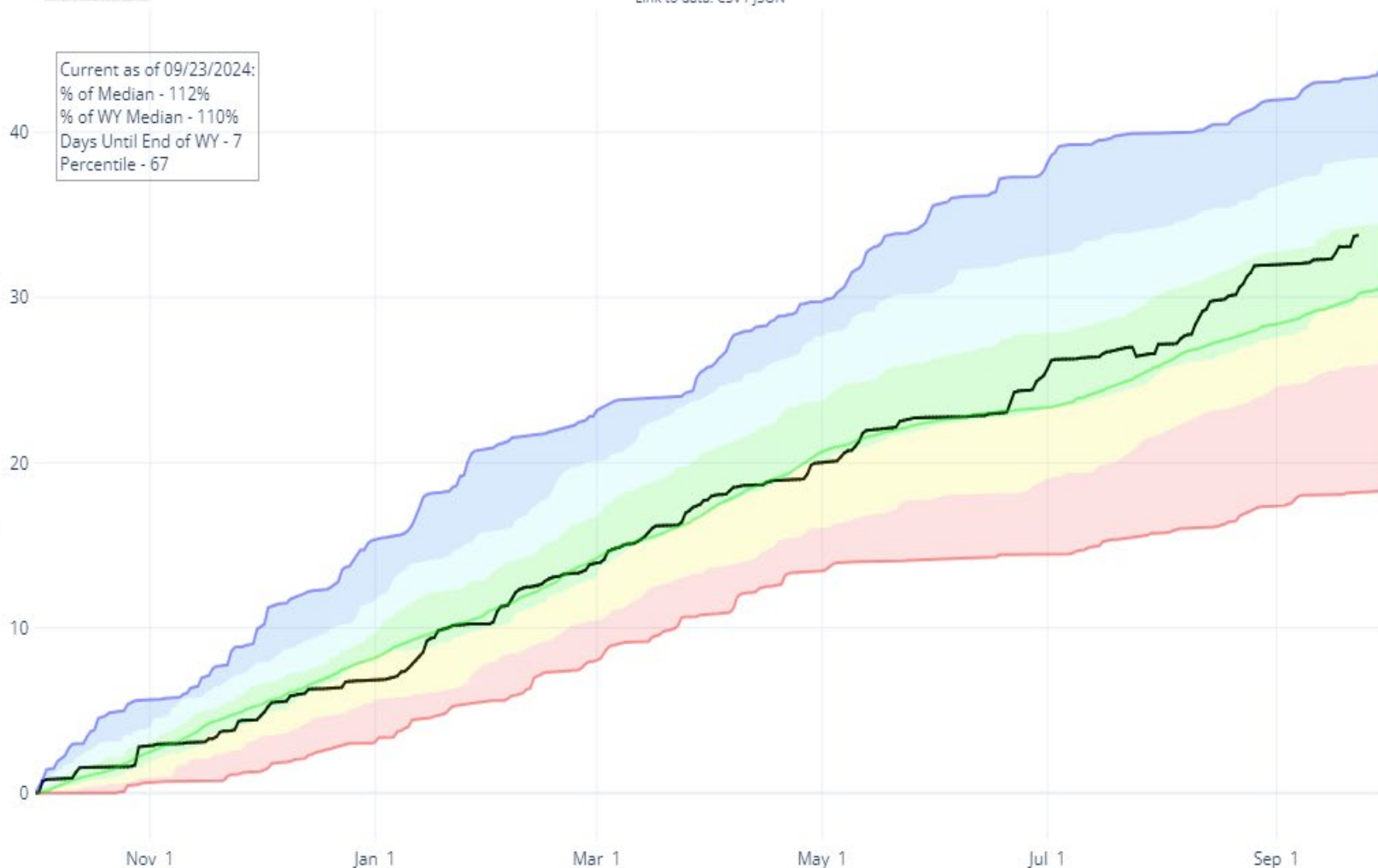
[Link to data: CSV / JSON](#)

Station List

Current as of 09/23/2024:
 % of Median - 112%
 % of WY Median - 110%
 Days Until End of WY - 7
 Percentile - 67

- Max
- Median ('91-'20)
- Min
- Stats. Shading
- 2024 (15 sites)

Precipitation Accumulation (in.)





Colorado Snow Surveys

PRECIPITATION ACCUMULATION IN UPPER RIO GRANDE

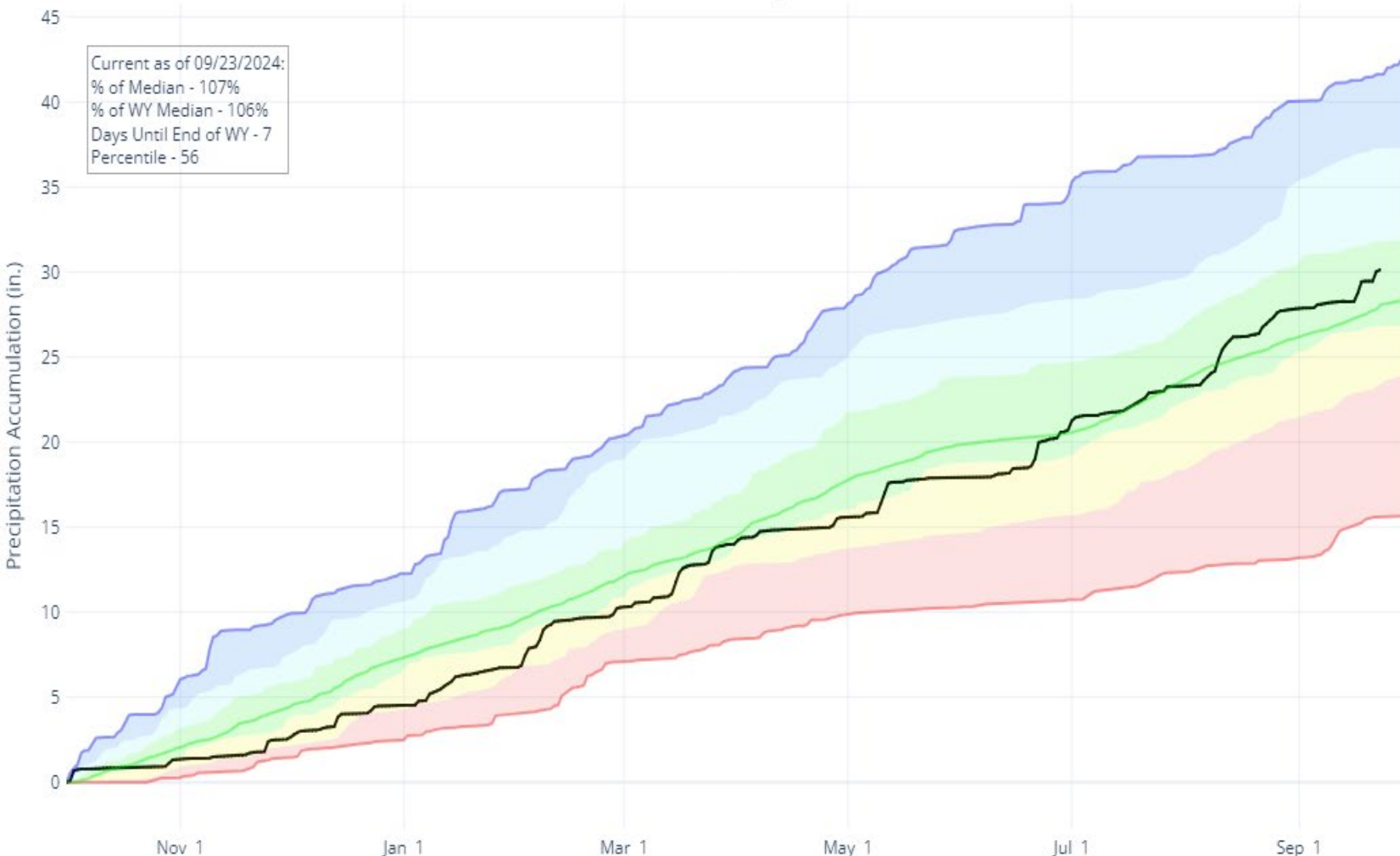
Reset Range

[Link to data: CSV / JSON](#)

Station List

Current as of 09/23/2024:
% of Median - 107%
% of WY Median - 106%
Days Until End of WY - 7
Percentile - 56

- Max
- Median ('91-'20)
- Min
- Stats. Shading
- 2024 (18 sites)





Colorado Snow Surveys

PRECIPITATION ACCUMULATION IN SOUTH PLATTE

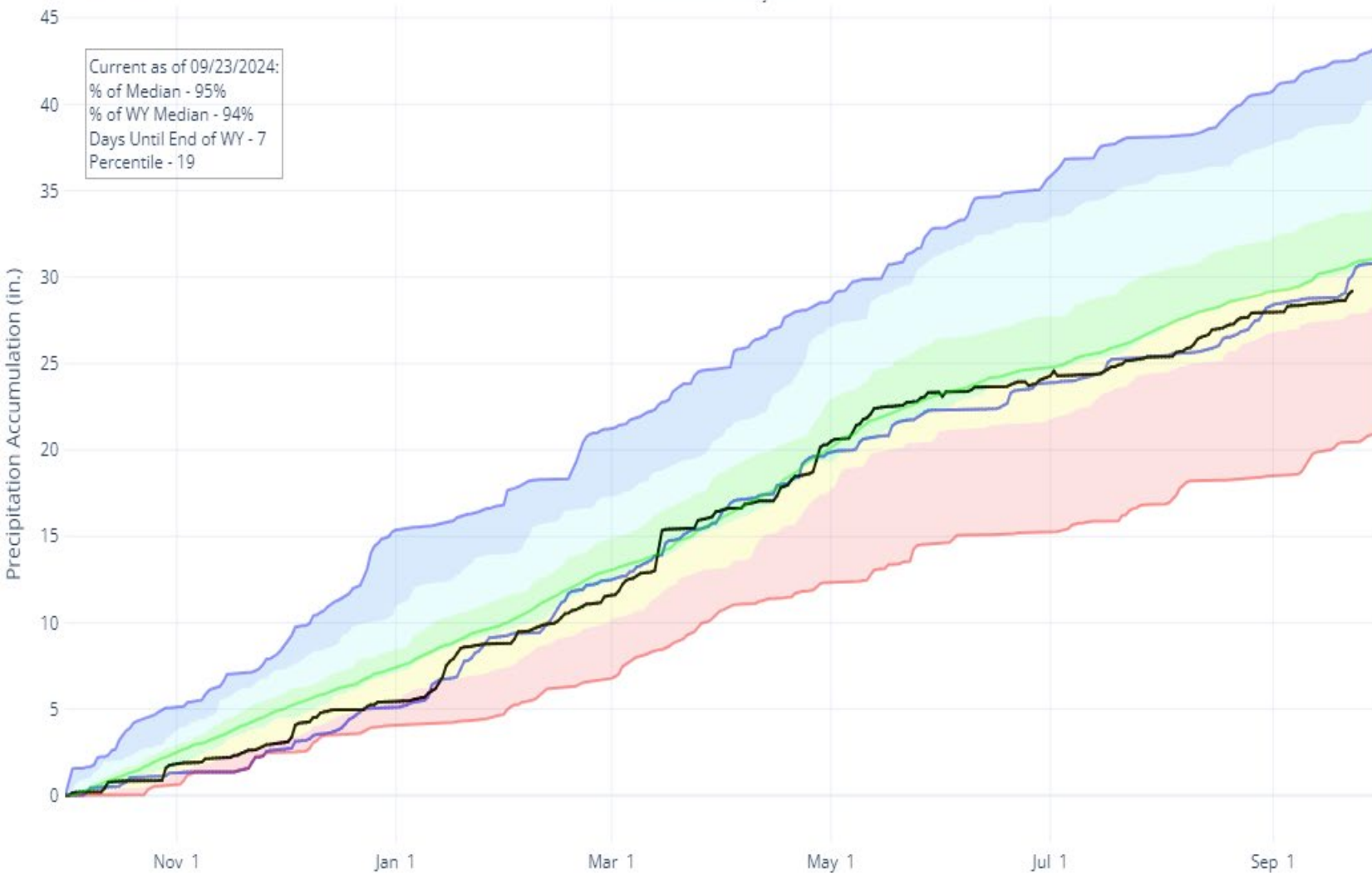
Reset Range

[Link to data: CSV / JSON](#)

Current as of 09/23/2024:
% of Median - 95%
% of WY Median - 94%
Days Until End of WY - 7
Percentile - 19

Station List

- Max
- Median ('91-'20)
- Min
- Stats. Shading
- 2024 (21 sites)
- 2000 (17 sites)

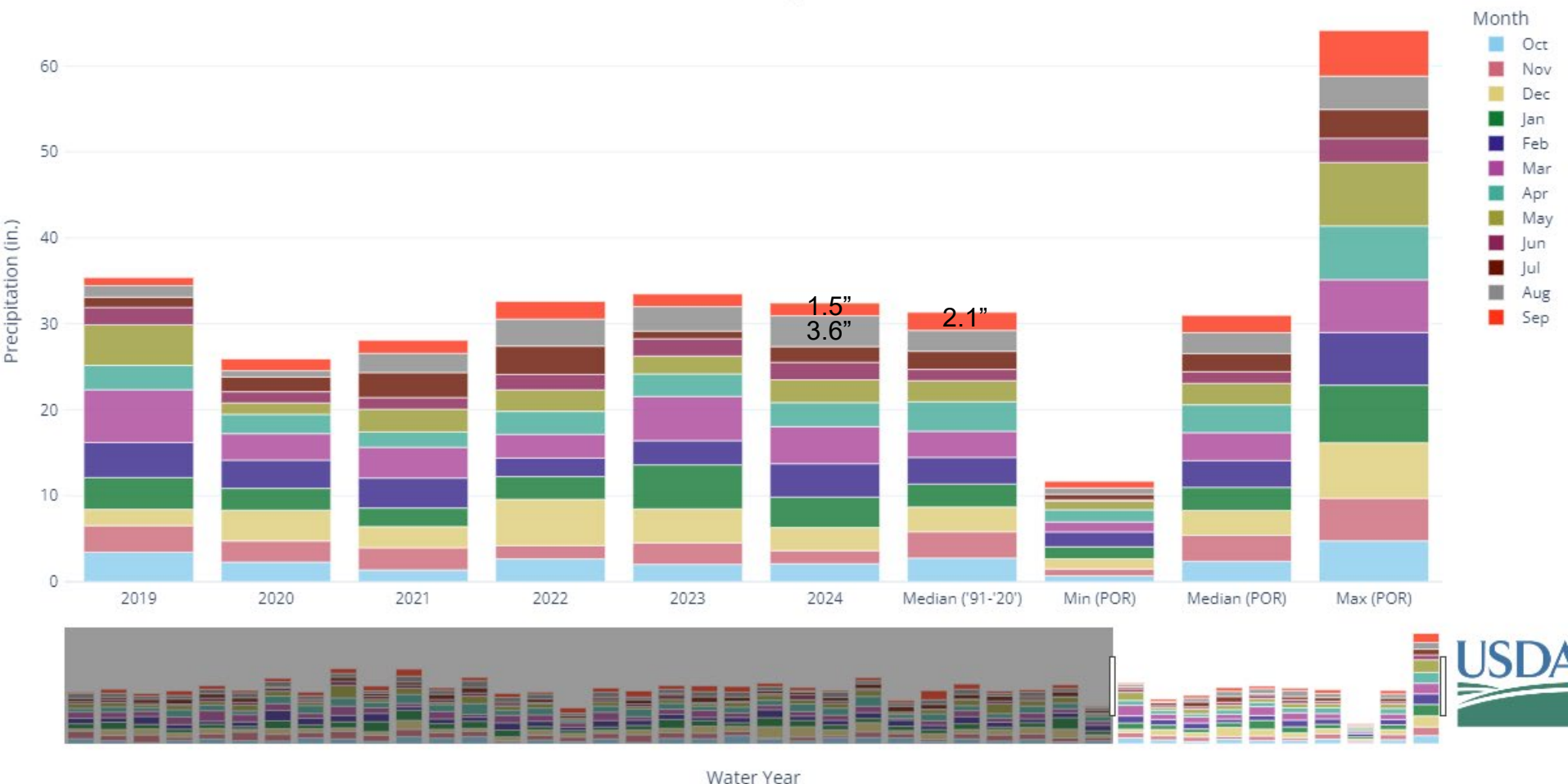


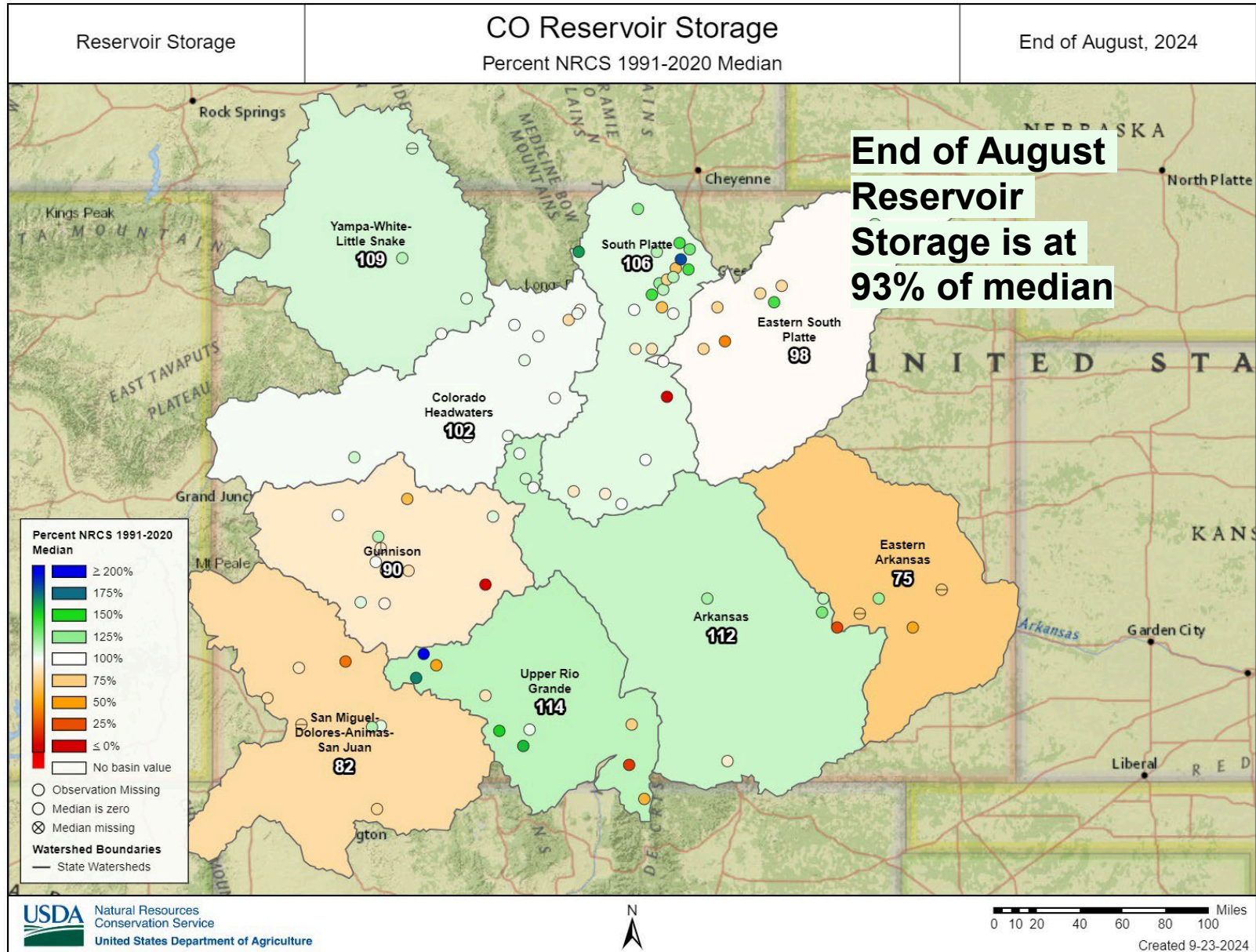


Colorado Snow Surveys

STATE OF COLORADO MONTHLY PRECIPITATION SUMMARY

[Link to data: CSV / JSON](#)



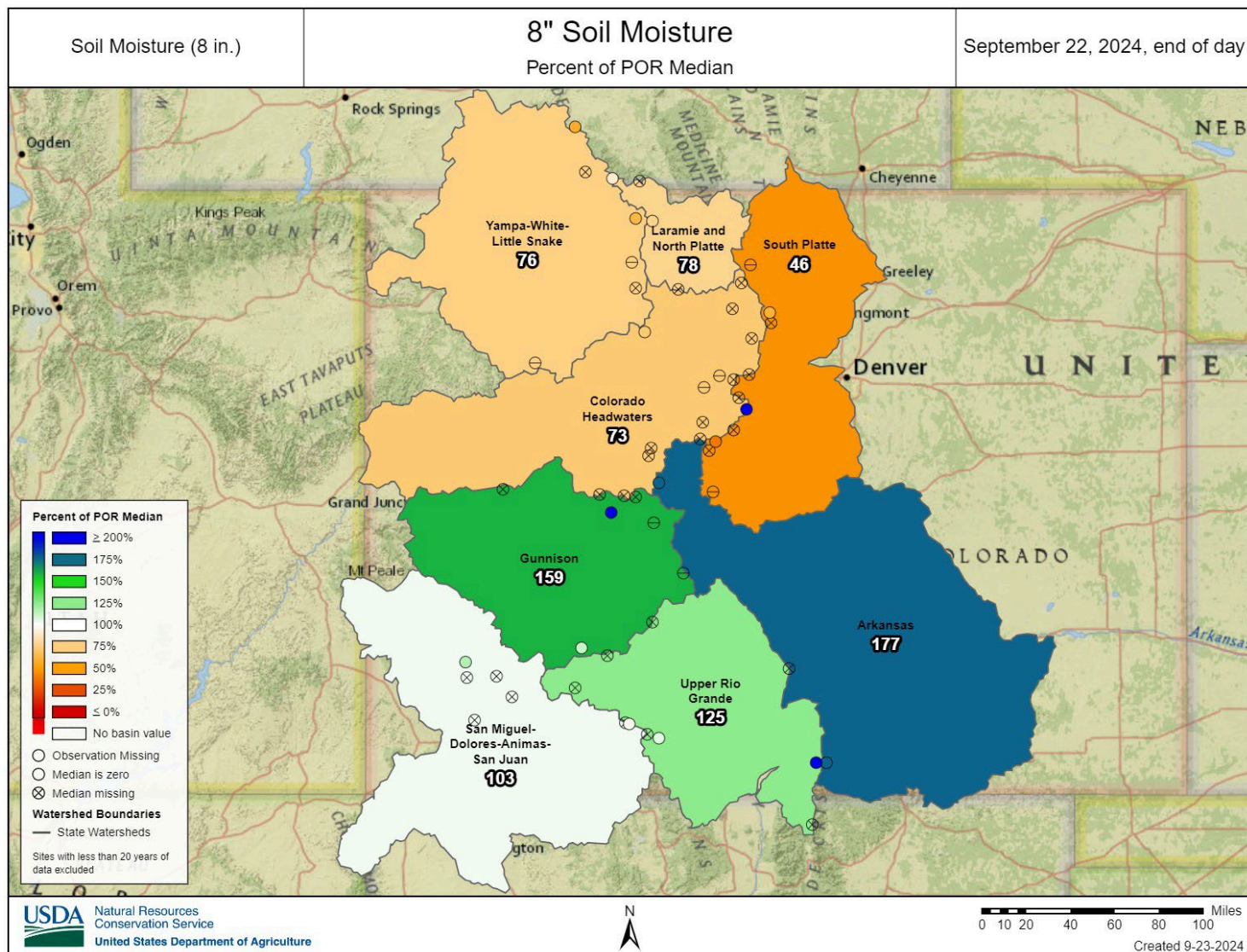




United States Department of Agriculture

Colorado Snow Surveys

8 inch
soil
moisture

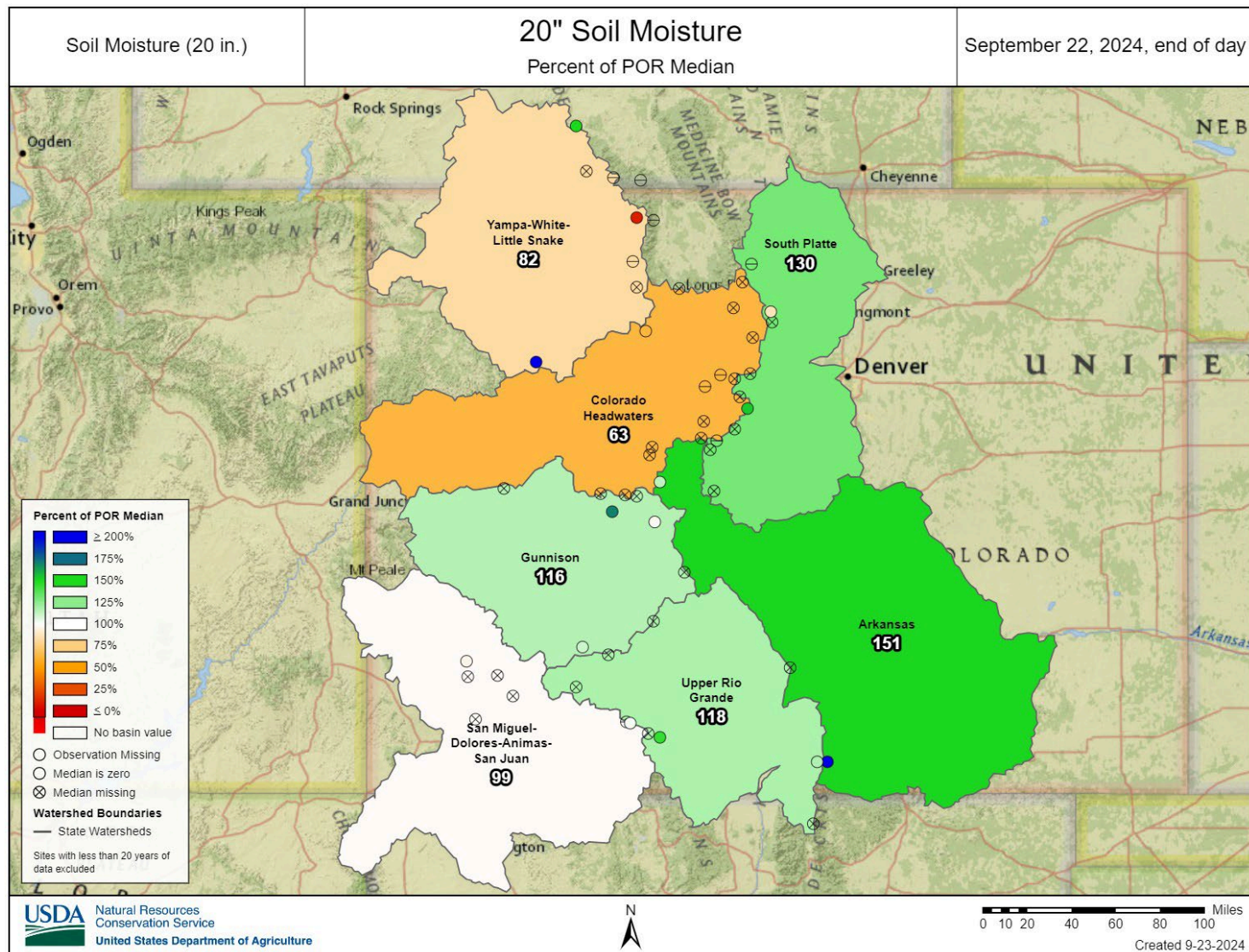




United States Department of Agriculture

Colorado Snow Surveys

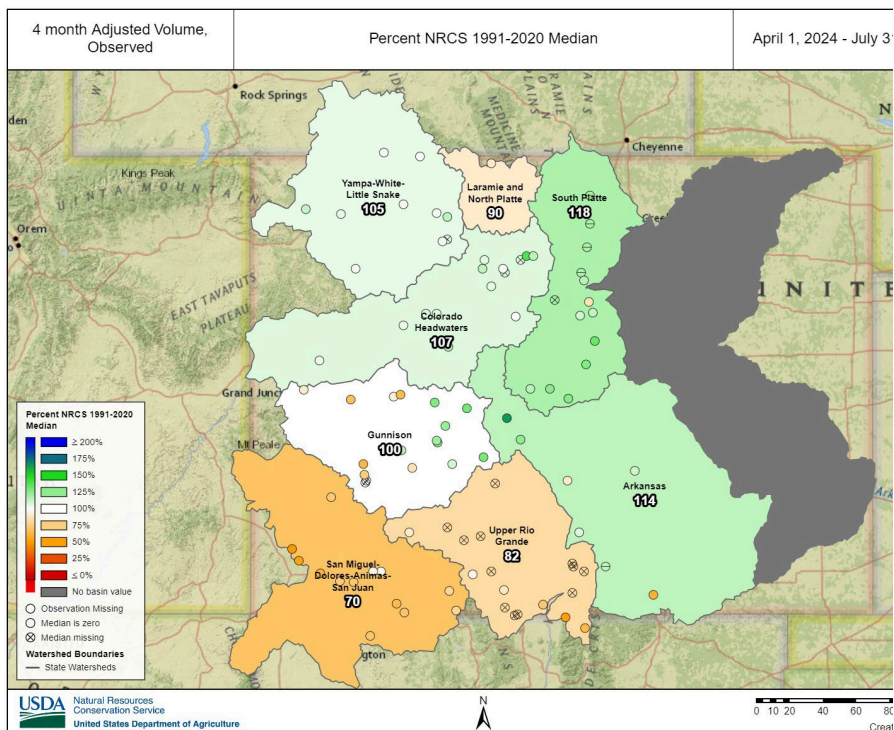
20 inch
soil
moisture



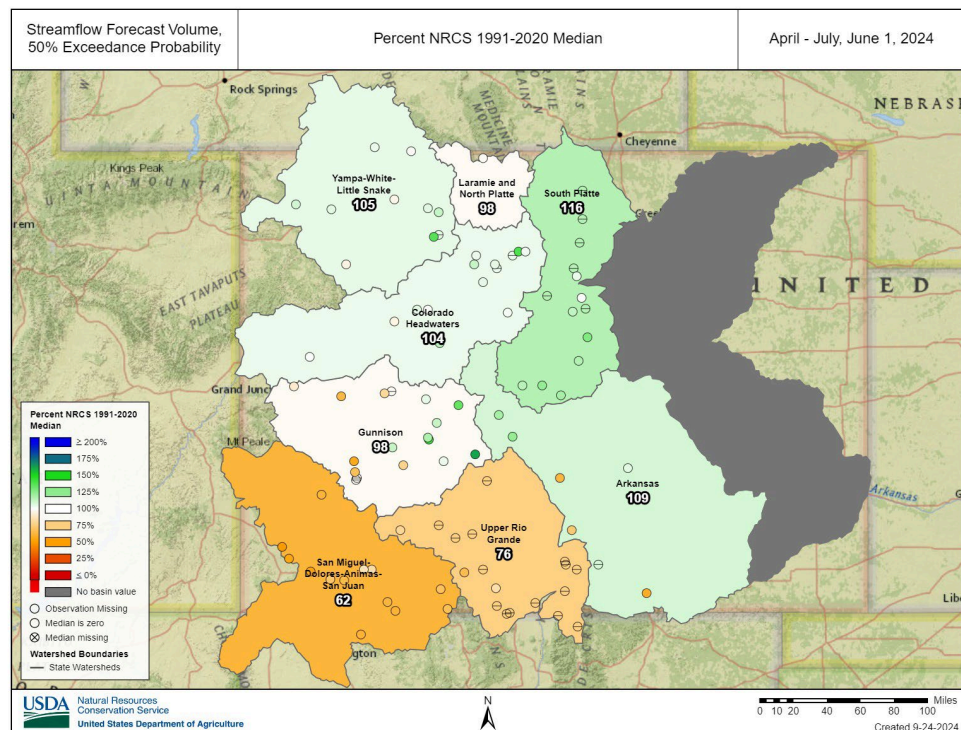


United States Department of Agriculture

Colorado Snow Surveys



Observed streamflow from April – July was 108% of median

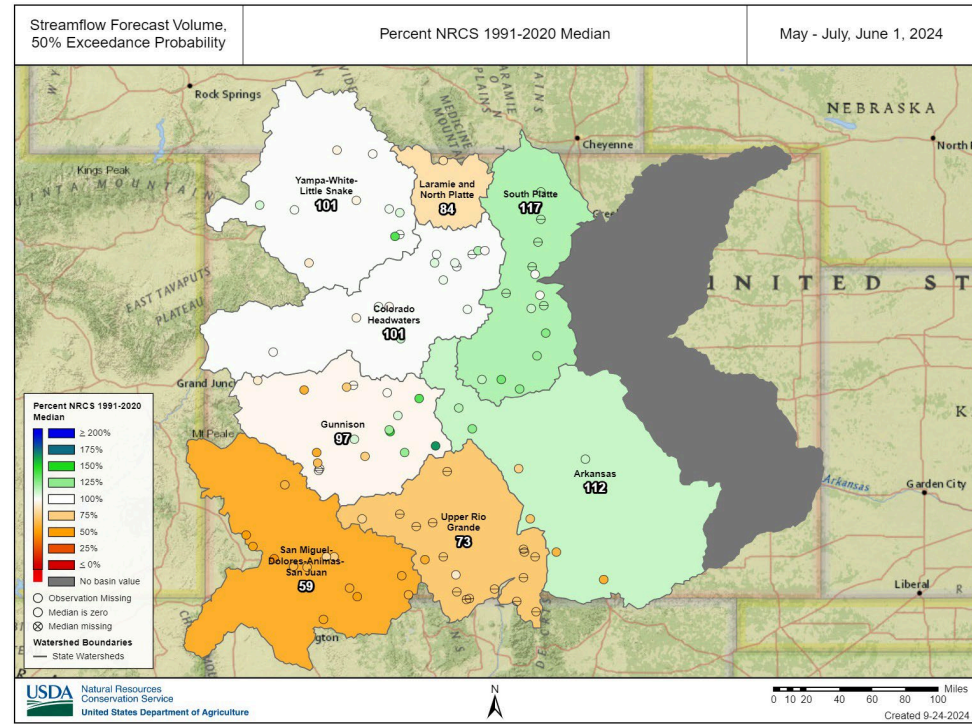
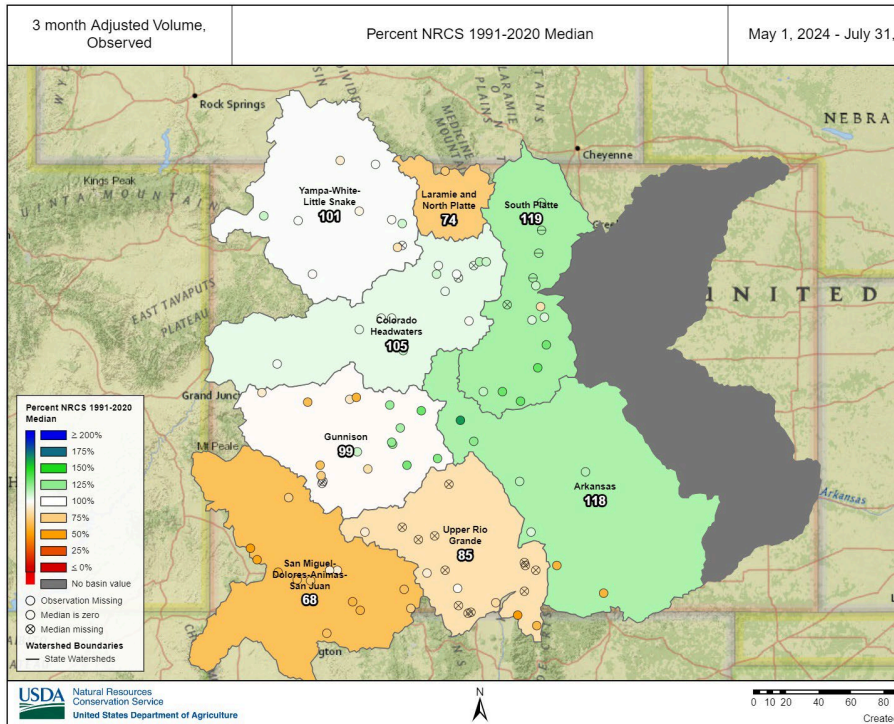


50% exceedance probability from April – July was predicted at 94%



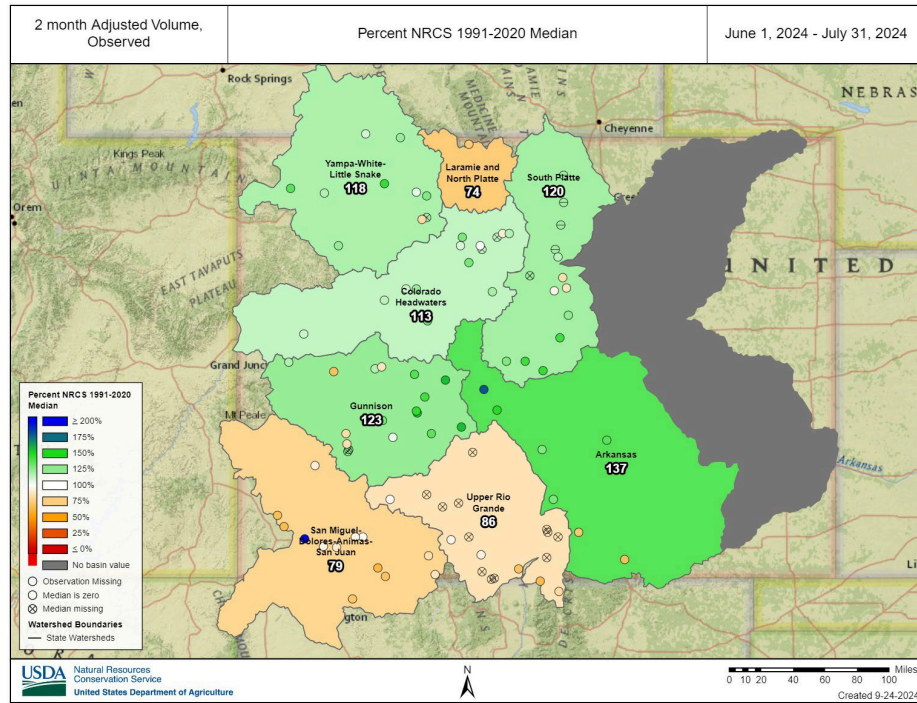
United States Department of Agriculture

Colorado Snow Surveys

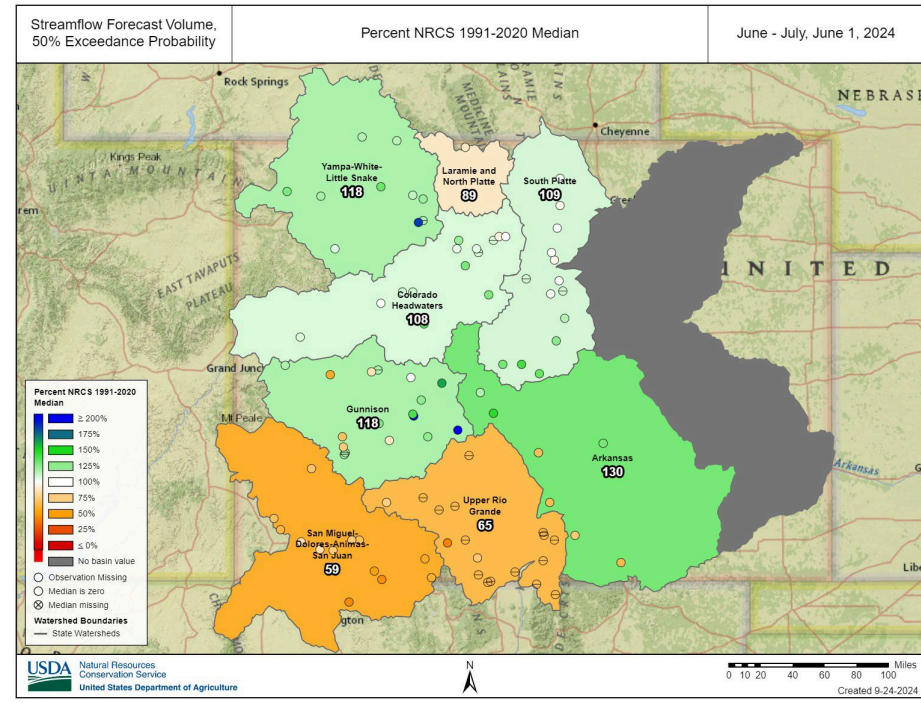


Observed streamflow from May – July was 106% of median

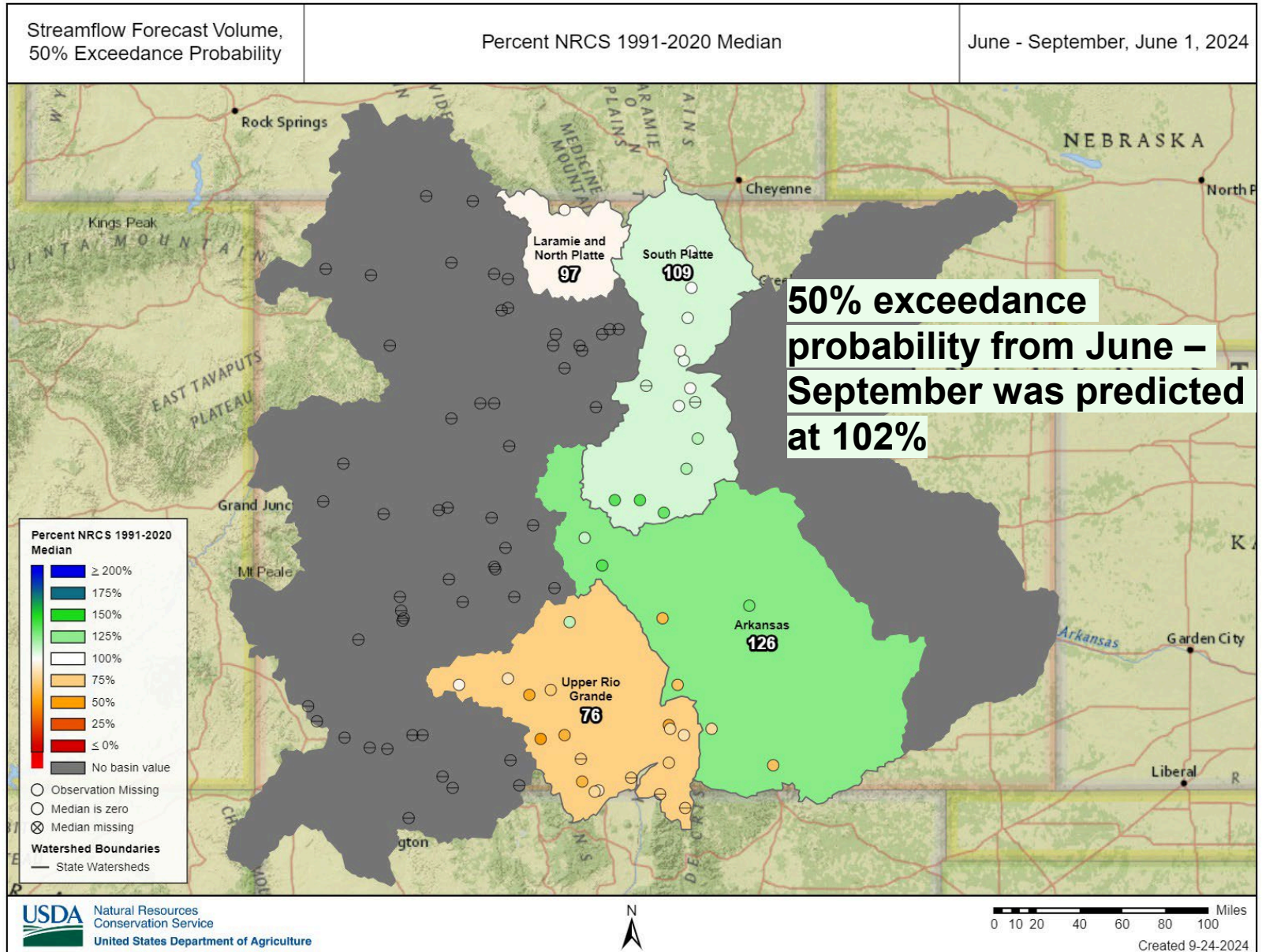
50% exceedance probability from May – July was predicted at 92%



Observed streamflow from June – July was 119% of median



50% exceedance probability from June – July was predicted at 106%



Summary

- The 2024 Water Year is concluding with near-normal to above normal precipitation across much of Colorado. The Upper Rio Grande, Arkansas and San Miguel-Dolores-Animas-San Juan basins have seen strong performance
- Statewide precipitation is 102% of median. Ranging from 96% in the South Platte to 116% in the Gunnison & Arkansas.
- Statewide reservoir storage is at 93% of median down 4% from July.
- The mean soil moisture across all stations for 8 inch depths is around 19.7% and 17.2% for 20 inch sensors
- Statewide streamflow was 106% of median from May to July and improved to 119% of median for June to July. Key basins like the Arkansas and South Platte performed well with streamflow percentages above 115% while the San Miguel-Dolores-Animas- San Juan remained lower at around 70% of median



Non-Discrimination Statement:

In accordance with Federal civil rights law and U.S. Department of agriculture (USDA) civil rights regulations and policies, the USDA, its Agencies, offices, and employees, and institutions participating in or administering USDA programs are prohibited from discriminating based on race, color, national origin, religion, sex, gender identity (including gender expression), sexual orientation, disability, age, marital status, family/parental status, income derived from a public assistance program, political beliefs, or reprisal or retaliation for prior civil rights activity, in any program or activity conducted or funded by USDA (not all bases apply to all programs). Remedies and complaint filing deadlines vary by program or incident.

Persons with disabilities who require alternative means of communication for program information (e.g., Braille, large print, audiotape, American Sign Language, etc.) should contact the responsible Agency or USDA 's TARGET Center at (202) 720-2600 (voice and TTY) or contact USDA through the Federal Relay Service at (800) 877-8339. Additionally, program information may be made available in languages other than English.

To file a program discrimination complaint, complete the USDA Program Discrimination Complaint Form, AD-3027, found online at [How to File a Program Discrimination Complaint](#) and at any USDA office or write a letter addressed to USDA and provide in the letter all of the information requested in the form. To request a copy of the complaint form, call (866) 632-9992. Submit your completed form or letter to USDA by: (1) mail: U.S. Department of Agriculture, Office of the Assistant Secretary for Civil Rights, 1400 Independence Avenue, SW, Washington, D.C. 20250-9410; (2) fax: (202) 690-7442; or (3) email: program.intake@usda.gov.