



COLORADO

Colorado Water Conservation Board *Department of Natural Resources*

DIRECTOR'S REPORT

July 2024

Interstate Compact Compliance • Watershed Protection • Flood Planning & Mitigation • Stream & Lake Protection
Water Project Loans & Grants • Water Modeling • Conservation & Drought Planning • Water Supply Planning



COLORADO

Colorado Water Conservation Board

Department of Natural Resources

TO: Colorado Water Conservation Board Members

FROM: Lauren Ris
Rosie Major

DATE: July 17-18, 2024

SUBJECT: **Agenda Item 4b, July 2024 CWCB Board Meeting Director's Report**

TABLE OF CONTENTS

Pg. 3 - STATEWIDE

- CWCB Small Feasibility Grant Fund Update
- Federal Technical Assistance Grant Program & Local Capacity Grants Update

Pg. 4 - STATEWIDE

- Technical Assistance Grants

Pg. 6 - COLORADO RIVER BASIN

- Colorado River Water Use
- Wild and Scenic Updates

Pg. 9 - WATERSHED AND FLOOD UPDATES

- Process-Based Restoration Workshop
- Wildfire Ready Action Plans (WRAP) Update

Pg. 10- WATERSHED AND FLOOD UPDATES

- Colorado Forest Resilience Planning Guide – Spring 2024
- FEMA NFIP Assessment, State of Colorado compliance

Pg. 11- WATERSHED AND FLOOD UPDATES

- NFIP Community Outreach and Support
- The Letter of Map Revision (LOMR) Review Partners Program
- July 2024 Risk Mapping, Assessment and Planning (MAP) Project Updates by Major Water Basin

Pg. 22 - WATER SUPPLY PLANNING SECTION UPDATES

- Water Supply Planning Section July 2024 Updates
- Water Supply Reserve Fund Grants

Pg. 23 - INSTREAM FLOW SECTION

- Stream and Lake Protection Section De Minimis Cases
- Instream Flow and Natural Lake Level Program Summary of Resolved Legal Protection Cases

Pg. 28 - LOAN PROGRAM ATTACHMENTS

- 01 - Water Project Loan Program Interest Rates
- 02 - Prequalified Project List and Loan Prospect Summary
- 03 - Design and Construction Status Report
- 04 - Loan Repayment Delinquency Report & Loan Financial Activity Report

STATEWIDE

Finance Section Director's Report Items – July 2024

CWCB SMALL FEASIBILITY STUDY GRANT FUND UPDATE:

New grant applications approved:

1. Montezuma Valley Irrigation Company – Lower Arikaree and Garrett Ridge Canal Piping (\$5,000)

Previously approved grants in FY23/24:

1. None

Total funds approved for feasibility study grants in FY23/24: \$5,000

Federal Technical Assistance Grant Program

Director's Report, July 2024

The Colorado Water Conservation Board's Federal Technical Assistance Program helps eligible entities review the many federal funding opportunities currently available for water projects, then prepare and submit federal grant applications. The Program can also help enhance projects prior to application with feasibility studies, planning, and partial design/engineering so that they stand out in the highly competitive federal grant process. The Program was established in spring 2022 via House Bill 22-1379, which appropriated CWCB \$2.5 million for Local Capacity Grants and an additional \$2.5 million for Technical Assistance Grants:

Local Capacity Grants: These are direct awards to grantees to secure the resources they need (contractors or otherwise) to develop projects and submit competitive federal grant applications.

Technical Assistance Grants: These are awards to grantees who want to utilize a contractor hired by the Colorado Water Conservation Board. This contractor can provide a wide variety of water project services, including researching federal grant opportunities, project design, partial engineering, cost estimation and federal application development/grant writing.

Program Status

As of July 2024, nearly all of the original \$2.5 million Local Capacity appropriation (minus some funds restricted to cover salaries and operating costs) has been awarded as grants. The 2024 Projects Bill contains language that allows CWCB to redistribute funds between the original Local Capacity and Technical Assistance appropriations in H.B. 22-1379. Program staff are currently evaluating future needs and will likely move funding from the Technical Assistance appropriation to the Local Capacity appropriation early in FY 2024-25

Local Capacity Grants

H.B. 22-1379 established \$2.5 million for Local Capacity Grants. As of July, the Grant Program has awarded nearly all funding available for Local Capacity Grants. The following table summarizes Local Capacity Grant activity through July 2024.

<u>Approved Applications</u>			
Applicant	Project	Total Project Budget	Grant Award
Owl Creek Lateral	Improved Storage and Operations	\$42,400	\$31,625
Rio Grande Headwaters Land Trust	Capacity for Federally Funded Conservation Projects in the Rio Grande Basin	\$194,750	\$145,000
Grand County Learning by Doing	Federal Funding for LBD Stream Restoration and Improvement Projects	\$237,531	\$169,775
Ute Mountain Utes Farm and Ranch Enterprise	Pre-Development Work (PL-566)	\$70,000	\$52,500
American Rivers	Wetland/Riparian Projects in the San Luis Valley	\$241,000	\$152,210
Colorado River Water Conservation District	Colorado River Drought Response Project	\$578,840	\$434,130
Colorado Rio Grande Restoration Foundation	Rio Grande Basin Capacity to Secure Federal Project Funding	\$268,800	\$195,000
Collbran Water Conservation District	Plateau Valley Pre-Development Work (PL-566)	\$70,000	\$52,500
Sangre de Christo Acequia Association	Federal Funding to Improve Water Management	\$83,975	\$44,975
West Divide Water Conservancy District	Martin Reservoir Enlargement and Reconfiguration	\$315,906	\$118,464
Farmers Conservation Alliance	White River Ditches Modernization Strategy	\$564,690	\$188,186
Estes Valley Watershed Coalition	Fish Creek/Beaver Meadow Restoration Project	\$203,953	\$150,005
Southwestern Water Conservation District	Capacity Gaps in the Southwestern Water Conservation District	\$278,706	\$156,706
Farmers Conservation Alliance	Collbran Conservancy District Modernization Strategy	\$375,375	\$187,688
Trout Unlimited (Montrose)	Securing Federal Funding for Southwest Colorado Projects	\$168,496	\$129,836
Farmers Conservation Alliance	Pre-Development Work, Orchard Mesa Irrigation District	\$98,250	\$73,250
Farmers Conservation Alliance	Pre-Development Work, Montezuma Valley Irrigation Co	\$98,250	\$73,090
Total:		\$3,890,922	\$2,354,940

Technical Assistance Grants

H.B. 22-1379 established \$2.5 million for Technical Assistance Grants. CWCB has contracted with Abt Associates to provide wide-ranging assistance to communities and water managers across Colorado as they develop federal grant applications for projects with a nexus to the Colorado Water Plan.

As of July 2024, the Program has eight active Technical Assistance projects that have received preliminary approval to proceed:

- City of Grand Junction, Juniata Ditch WaterSMART Grant Support
- Colorado City Metropolitan District, Lake Beckwith Dam Repair and Enhancement
- San Miguel Watershed Coalition, Reed-Chatfield Ditch and Diversion Rehabilitation Project
- Fountain Creek Watershed District, Technical Support Project
- Rocky Ford Highline Canal, Rocky Ford Highline Canal Rehabilitation Project
- Bent Conservation District, Bent Conservation District EQIP Projects
- Mount Sopris Conservation District, Mt. Sopris Conservation District EQIP Projects
- Trout Unlimited, Gunnison Basin EQIP Projects

Program staff are currently evaluating four more projects for possible approval.

COLORADO RIVER BASIN

COLORADO RIVER WATER USE—

2024 Colorado River Storage as of June 30, 2024			
	Elevation (feet above mean sea level)	Storage (MAF)	Percent of Capacity
Lake Mead	1,062.50	8.614	33%
Lake Powell	3,585.60	9.749	42%
Total System Active Storage		26.190	45%
2023 Total Active Storage		25.734	44%
		Flow (MAF)	Percent of Average
Forecasted Unregulated Inflow into Powell (Forecasted Water Year 2024)		7.891	82%

*Note MAF = million acre-feet

Wild and Scenic Updates

Currently, two different stakeholder groups in the state are working on plans that are an alternative to Wild and Scenic eligibility or suitability. Two additional groups are considering pursuing Wild and Scenic River designations. The following provides updates on both types of stakeholder efforts.

Wild and Scenic Alternative Stakeholder Groups

Upper Colorado River Wild and Scenic Stakeholder Group

Background: The Upper Colorado River Wild and Scenic Stakeholder Group (UCRW&S or SG) was formed to protect the outstandingly remarkable values (ORVs) identified in the U.S. Bureau of Land Management (BLM) and U.S. Forest Service (USFS) Wild and Scenic Eligibility Reports for river segments that start below the confluence with the Blue River and end near No Name in Glenwood Canyon. The SG includes water users from both the West Slope and East Slope, environmental interests, anglers, recreational interests, and local and state government representatives. The Amended and Restated Upper Colorado River Wild and Scenic Stakeholder Group Management Plan (Plan) was completed in June 2020 and includes long-term protective measures, cooperative efforts to address issues, and monitoring of the ORVs and other important environmental factors related to recreational fishing and floatboating. The effective date of the Plan commenced June 12, 2015, upon issuance of records of decision by BLM and USFS. The federal entities accepted the SG Plan and deferred making suitability determinations as part of their resource planning efforts. More information about this group is available at: <https://www.upcowildandscenic.com/>

Updates: The SG continues to hold regular meetings and subcommittees continue to meet to fulfill the SG Plan. The SG met on June 26, 2024 to discuss future uses of an endowment fund, hear updates about monitoring efforts and potential water leases, and review financial information. The SG requested \$99,999 in May from the Wild and Scenic Fund for a stakeholder coordinator and continued monitoring efforts as defined by the SG Plan. These funds were approved by Lauren Ris and [Paul Bruchez](#) and the purchase order was issued in early June.

Lower Dolores Plan Working Group

Background: The Lower Dolores Plan Working Group has been meeting since 2008 to develop alternative protections for a section of the Dolores River between McPhee Dam and Bedrock. The stakeholder group includes water districts, conservation and recreation groups, local landowners, counties, and others. This group proposed to 1) create a National Conservation Area and 2) continue to understand and improve native fish habitats through the Dolores River Native Fish Monitoring and Recommendations Team (M&R Team). The BLM has agreed to not find portions of the Lower Dolores River eligible for Wild and Scenic designation if those actions occur. The legislation was first introduced to Congress in 2022 and reintroduced in both the House and Senate in 2023. The NCA legislation had a markup in December in the Senate Energy and Natural Resources (ENR) Committee and passed unanimously. A hearing in the House ENR Committee is the next procedural step.

Fort Lewis College is assisting the M&R Team conduct a number of monitoring efforts on the Dolores River. This group secured a WSRF Grant in 2020 for \$165,617 for a 5-year project. In addition, in 2023 Fort Lewis College applied for Wild and Scenic funding on behalf of the group for \$73,565.04 for a 2-yr project that will end in 2025.

Updates: There are no updates on the legislation. The M&R team met on June 11, 2024 to discuss refining research goals surrounding willow encroachment, low flow conditions that are detrimental to native fish, and sediment loads. The group also considered other potential efforts to refine release hydrographs, evaluate flows necessary to inundated floodplains, etc. The team plans to evaluate which monitoring efforts to continue this fall.

Potential Wild and Scenic Designations

Deep Creek Wild and Scenic Stakeholder Group

Background: American Rivers convened a diverse stakeholder group to discuss designation of 15 miles of Deep Creek as a Wild and Scenic River in 2017. Deep Creek is a tributary to the Colorado River just upstream from the confluence with the Eagle River. ORVs include ecologic, scenic, and geologic. The Stakeholder Group (SG) includes the USFS, BLM, Colorado Parks and Wildlife (CPW), local landowners, American Rivers, Eagle River Coalition, Colorado River Water Conservation District (River District), and various recreation and environment-based groups among others. The SG has been working for many years to develop legislation for the proposed Wild and Scenic designation as well as a proposed ISF to protect the water resources if designation occurs.

Updates: Federal entities are reviewing final versions of the proposed legislation. CWCB staff and River District will start work on terms and conditions in July to address the proposed CWCB-held ISF water right to protect all unappropriated flow with a water development allowance (WDA) to meet reasonable potential future uses. CWCB staff, American Rivers, and the Eagle River Coalition met to discuss the formal ISF recommendation process and timeline. Outreach efforts are underway to talk with Garfield County. We anticipate asking the board to form intent on a Deep Creek ISF at the January 2025 Board meeting. The current concept is to initiate the ISF process by asking the Board to form its intent, and then pause the process until the legislation passes.

Crystal River Wild and Scenic Collaborative

Background: A portion of the Crystal River from the headwaters to the Sweet Jessup canal headgate was determined to be eligible for inclusion in the Wild and Scenic program in the 1980s and again in 2002. This local stakeholder group met over the last year, with the assistance of a facilitator, to discuss flow and land

use protection options. At the conclusion of the facilitator's contract, the stakeholder group formed a recommendation to further consider the three options, including a Wild and Scenic designation, an instream flow, and an intergovernmental agreement. The group has designated members of the steering committee into sub-groups to further gain understanding and explore all three of these options. More information about this group can be found on their website: <https://thecrystalvalleyecho.com/wild-scenic-stakeholder>.

Updates: The stakeholder group will reconvene late summer to report their progress.

WATERSHED AND FLOOD UPDATES

Process-Based Restoration Workshop

Process-based restoration (PBR) is a subset of stream restoration methods that seek to re-establish natural stream processes by reconnecting incised streams with their floodplains and adjacent wetlands, increasing inundation of the floodplain, and allowing for a higher baseflow and more riparian habitat. These projects typically involve the use of simple, temporary, hand-built rock and wood structures that slow the flow of water, capture sediment, and slowly aggrade the stream. Over the past decade, interest in designing and implementing PBR projects has grown considerably, and the River Restoration Network has worked to bring together agencies, non-profits, academics, funders, and practitioners to share information and lessons learned. Last week, the River Restoration Network hosted a Process-Based Stream Restoration Workshop in Carbondale, CO, attended by Watershed and Flood Section member Andrea Harbin Monahan, where we received an overview of PBR principles and approaches, including typical goals and outcomes from these types of projects, factors to consider when deciding the appropriate approach, and how to think about what's possible for scaling up stream restoration in Colorado.

We heard from multiple speakers about how to perform high-level, desktop assessments to determine where PBR opportunities might exist, how to ground-truth those assessments, and how to identify and manage goals, outcomes, and stakeholder expectations.

We also learned about the importance of looking at the stressors and causes of degradation when determining a path forward with restoration, addressing those root causes for more positive outcomes. We learned about where and why different PBR methods are used and when it's appropriate to use low-tech methods versus high-tech methods, as well as typical monitoring metrics and methods.

We also learned how this type of restoration can help promote the return of beaver, as well as measures that can be taken to preemptively avoid potential conflicts between beaver and man-made infrastructure.

Finally, we learned about potential permitting requirements through individual counties, FEMA, and the USACE, as well as potential implications from SB23-270.

This was certainly an informative workshop. There will always be more to learn as we fund more of these implementation projects through the Water Plan Grant Program and the Colorado Watershed Restoration Program, but this workshop provided an excellent overview of where we can perform this work and why.

Andrea Harbin Monahan

Wildfire Ready Action Plans (WRAP) Update

The [Wildfire Ready Watersheds](#) program kicked off in 2021 following legislation, SB21-270. This program undertook a statewide susceptibility analysis to post-wildfire hazards. To allow for local communities to take advantage of this type of modeling and mapping with a more detailed and local approach, [Wildfire Ready Action Plans](#) (WRAPs) were created. This new planning program was paired with the release of \$10M of ARPA funds, administered through a Special Release of the Colorado Watershed Restoration grant program.

Within this grant program there is a great need and opportunity to develop WRAPs. WRAPs identify susceptibility with the end goal of putting more time, money, and resources into making watersheds and

communities more resilient to post wildfire hazards such as flooding and debris flows. Savvy stakeholder groups will pair WRAPs with traditional wildfire mitigation planning, e.g. Community Wildfire Protection Plans or Wildfire Risk Assessments, to develop projects that work in concert to mitigate both wildfire and post wildfire hazards.

There has been an overwhelming amount of interest and applications for this program and funding. The CWCB has awarded funding for 13 WRAPs, 8 projects, and 2 studies (to support WRAPs). In total, there is just over \$6.6M in awarded funds. CWCB staff are working with another 12 stakeholder groups that are developing WRAP applications. Staff are also in communication with 3 stakeholder groups that are developing project implementation applications. Staff anticipates that requests for the full \$10M will be received by September 30, 2024, which will provide adequate time to contract all grants before the December 31, 2024 deadline. It is likely that the pending requests will exceed the available funding. If this happens some WRAP and project implementation applicants will be advised to submit their applications to the Watershed Health and Recreation category of the Colorado Water Plan grant program.

Chris Sturm & Steven Reeves

Colorado Forest Resilience Planning Guide – Spring 2024

In their [2023 Annual Report](#), the [Colorado Forest Health Council](#) made a recommendation to create a Colorado Forest Resilience Planning Guide. The following is a brief overview of the Purpose, Goals and Audience for the Guide.

- **Purpose:** The planning guide will assist with positioning all areas and communities in Colorado to better leverage resources, knowledge share, and be competitive at receiving funding to achieve effective forest health management and resiliency.
- **Goal:** The planning guide provides a starting point on how to access science-based modeling, existing resources and technical capacity, and statewide priorities to improve existing processes in pre-fire planning and forest health efforts.
- **Audience:** Targeted at the local government and community-level, while being broadly understandable to a range of stakeholders from the individual to multiple adjacent counties interested in advancing pre-fire planning and building forest health resiliency.

This guide has a lot of similar goals with CWCB's own Wildfire Ready Action Plans. In order for the Forest Health Council to better understand our programs, the CWCB Watershed team has taken the opportunity to engage with the build out of this guide. This guide has a focus on the fuelscape and will be very complimentary to a WRAP. WRAPs consider the entire landscape of any given watershed, however CWCB's focus for project types exist mostly within the riverscape. It takes a combination of fuelscape and riverscape treatments to see increases to landscape level resilience. We are excited for this guide's potential and will remain an engaged stakeholder throughout the process.

(Steve Reeves)

National Flood Insurance Program (NFIP) Community Assistance Program-State Support Services Element (CAP-SSSE) Colorado Floodplain Development Management Program

FEMA NFIP Assessment, State of Colorado compliance

This office continues to coordinate and cooperate with other state departments and divisions, in particular the CO Office of the State Architect (OSA), and the CO Legislature to address deficiencies in

the State’s administration of the National Flood Insurance Program pertaining to the permitting of State-owned structures and development in the regulatory floodplain as identified in a 2021 FEMA letter summarizing their assessment findings.

[SB24-179 Floodplain Management Program](#) was approved by the governor on June 6th, and will go effective on August 7, 2024, CWCB will work with the OSA to create and implement a floodplain development permit procedure for state development by June 30, 2025. Completion of this action will ensure the State of Colorado is fully compliant as a participating community in the National Flood Insurance Program.

NFIP Community Outreach and Support

Doug and Willem have conducted six community assistance contacts (CAC) since January. The CAC provides a means to establish or re-establish contact with an NFIP community for the purpose of determining any existing problems or issues and to offer assistance if necessary. The CAC also provides the opportunity to enhance the working relationship between the State or FEMA and NFIP communities, and creates a greater awareness of the NFIP and its requirements. Most communities contacted were found to be in good standing. For communities where any issues were found, guidance was provided to help the communities get the issues addressed.

(Doug Mahan; Willem Lensink)

The Letter of Map Revision (LOMR) Review Partners Program

The CWCB LOMR Review Partners Program continues to work with applicants, communities and the Federal Emergency Management Agency (FEMA) to answer questions, provide guidance, and work through complex issues for both ongoing and upcoming map revision requests. CWCB processes and makes recommendations for revision requests on behalf of FEMA to modify flood hazard information on Flood Insurance Rate Maps (FIRMs). FEMA determines if the revision request will be approved or become effective. We have started our fourth year of implementing this program. It has been well-received by applicants and communities and provides the ability to have some coordination between the map revision requests and ongoing Risk MAP projects. Currently there are ongoing cases in Boulder, Douglas, El Paso, Elbert, Gilpin, Gunnison, Jefferson, Larimer, Mesa, Montrose, Pueblo, Routt, San Miguel, Weld, and Yuma Counties.

July 2024 Risk Mapping, Assessment and Planning (MAP) Project Updates by Major Water Basin

CWCB is FEMA’s Cooperating Technical Partner (CTP) for the state while Mile High Flood District (MHFD) is the CTP within their service area (Denver Metropolitan Area). CWCB provides support for and coordination with MHFD on projects and data sharing for communities that extend across common boundaries.

North Platte Basin – No flood hazard studies are being conducted in this area.

South Platte Basin – Adams, Arapahoe, Boulder, Sedgwick, Larimer, Lincoln, Logan, Morgan, Park, Phillips, and Weld Counties have ongoing Risk MAP studies. Ongoing CWCB studies within the South Platte basin are as follows:

- Park County Phase 2: Hydrology was approved November 28, 2023. FEMA is making a shift to 2-Dimensional (2D) hydraulic modeling. Managing the 2D models has typically been more resource-intensive. During the transition period (that will take 5 to 10 years) CWCB is verifying with the communities that they agree with receiving the 2D hydraulic modeling instead of the traditional 1D hydraulic modeling. Town of Alma has requested 1D models in their area, and both the Town of Fairplay and County will continue with the use of the 2D modeling. The hydraulics package was sent to FEMA in April for review and approval and comments were received in May. We will be resubmitting the revised pack to FEMA in early July.
- Logan County Phase 2: The County's suspension from the NFIP does not impact progress for the ongoing Risk MAP project. Hydrology was approved by FEMA on May 1, 2024. Phase 2 hydraulic modeling is underway; we anticipate the initial submittal to FEMA in July.
- Adams and Arapahoe Counties BLE: We received comments from FEMA on the BLE submittal in June and are planning on resubmitting in early July. Phase 2 kickoff meetings will be held in the coming months.
- Morgan County BLE: Phase 2 (Data Development) is underway. We are in communications with FEMA and the Town of Wiggins regarding the currently secluded Kiowa Creek levee that must be re-certified and FEMA-accredited during this study to be able to continue showing flood protection for the Town of Wiggins on the maps.
- Weld Countywide: A countywide BLE/Discovery effort is ongoing for all flooding sources with drainage areas greater than one square mile that weren't updated with the CHAMP project. This countywide study will not include flooding sources recently updated with the CHAMP project (which went effective November 30, 2023). Comments from FEMA on the BLE model were received in May; the full submittal package will be sent to FEMA in early August. A kickoff meeting with communities will be held soon and the associated meeting materials are currently being reviewed by CWCB.

The Colorado Hazard Mapping Program (CHAMP) Physical Map Revisions (PMRs): The CWCB was able to leverage funds from FEMA to continue getting several CHAMP studies incorporated into updated Flood Insurance Rate Maps (FIRMs) and Flood Insurance Studies (FISs) through the FEMA Physical Map Revision process. CHAMP involved analyzing major streams across various Colorado counties (following the devastating 2013 flooding along the Front Range) and includes over 200 FIRM panel updates. Two remaining counties are being completed within the South Platte Basin. These include Boulder and Larimer Counties.

- Boulder County PMR: This LFD for this study was issued 4/24/2024 (effective date expected early November 2024). Approximately 3.7 miles along Left Hand Creek downstream of the Geer Canyon/Left Hand Creek confluence will be restudied as recommended by the Scientific Review Panel (SRP). The restudy impacts portions of three FIRM panels. These panels will reflect the current effective flood hazard data until the restudy is completed. The resulting updates to these three panels will become effective through a future LOMR that will follow the MT-2 revision process.

An additional state funded LOMR is being completed to reflect CHAMP data for over 6,000 feet along Geer Canyon Creek and approximately 12,000 feet along Left Hand Creek (upstream of the SRP area). Stream reaches included in the LOMR are well outside the SRP

area. The LOMR will revise flood hazard data for these upstream segments of Geer Canyon and Left Hand Creek.

- Weld County PMR: Weld County PMR revised Flood Insurance Study (FIS) and Flood Insurance Rate Maps (FIRMs) became effective on 11/30/2023.

The City of Longmont extends into both Weld and Boulder Counties. Longmont has opted to split their flood hazard information at the Boulder/Weld County line. This required a Longmont PMR for the three impacted FIRM panels now within the Weld County FIS and FIRMs (previously part of the Boulder County PMR). These three panels reflect the updated flood hazard data for portions of the City of Longmont that are physically within Weld County. The LFD for the Longmont PMR (in Weld County) was issued March 26, 2024 and will become effective on September 26, 2024.

- Larimer County PMR: Valid appeal items received during due process for this project have been resolved. Appeal resolution emails went out to communities on 3/22/2024. The Drake Levee certification is waiting on some additional documentation, which has pushed the anticipated LFD date to August (exact date not yet determined). There are also two ongoing state funded LOMRs that will update the PMR flood hazard information to reflect updates that have occurred since the revised preliminary mapping was completed. One is along Boxelder Creek near the Town of Wellington, and one is along the Cache la Poudre River and includes updates between west of N. College Avenue and south of Kechter Road in the City of Fort Collins and unincorporated Larimer County.
- Phillips County Phase 4: CWCB and FEMA are collaborating to complete the revisions associated with CDOT's appeal along the Frenchman Creek and Tributaries within the Town of Holyoke. CWCB's contractor will leverage as much information from CDOT's model as possible to complete the remaining hydraulic analyses and mapping using the CDOT revised hydrology submitted with the initial appeal package. Revised preliminary information will be required and another 90-day mandatory appeal period will take place because the initial appeal package came directly from CDOT instead of the community. CWCB's contractor is currently working on the revised hydraulic modeling and will have the state-funded revised hydraulic modeling completed by June 30, 2024.
- Phillips Countywide: CWCB held the countywide Discovery meeting in January 2023, and we are preparing for a Phase 2 kickoff meeting in the near future. This study covers the portion of Phillips County not included in the Phase 4 project. The BLE hydraulics were approved by FEMA's contractor. CWCB received an approved exception to a recent FEMA requirement for the draft Draft BLE DFIRM databases topology check so floodplain mapping, flood risk products and pertinent Draft BLE DFIRM database items have been submitted. The Phase 2 kickoff meeting will be scheduled soon.
- Republican Basin County BLE: A BLE/Discovery effort is being initiated for all flooding sources with drainage areas greater than a square mile within Cheyenne, Kit Carson, Washington, and Yuma Counties. We are working on issued that contractor's task order and after that occurs, a kickoff meeting with communities will be scheduled.

- Sedgwick County BLE: A countywide BLE/Discovery effort is underway for flooding sources with drainage areas greater than one square mile that weren't updated with the CHAMP project. The BLE model and floodplain mapping have been resubmitted after review comments were addressed. The Discovery meeting with communities needs to be scheduled.

Colorado Basin – Eagle, Grand, Garfield, and Summit Counties have ongoing Risk MAP studies:

- Eagle County Physical Map Revision Phase 3: Revised preliminary products were distributed November 30, 2023. CWCB is working with our contractor on a state funded LOMR for an area in Basalt that impacts portions of both Eagle and Pitkin Counties. The LOMR will provide flood risk data to bridge an existing data gap, verify appropriate flow splits, and revise modeling to reflect existing flood risk.
- Garfield County Phase 2: CWCB met with the City of Glenwood Springs regarding flood hazard mapping through portions of the community. The City has confirmed that they want regulatory mapping based on clear water hydraulic modeling (versus the originally requested debris flow results). The revised clearwater hydraulic submittal to FEMA is anticipated to occur in late July.
- Summit County Phase 2: Hydrology was approved December 13, 2023, and survey data was approved December 11, 2023. CWCB completed checks with communities on using 2D or 1D hydraulic modeling as the project moves into hydraulic modeling. We got confirmation on modeling approaches from everyone and are currently finalizing the hydraulic modeling that we'll submit for FEMA's review in early July. The Town of Silverthorne requested reverting to effective flow rates on the Blue River, as recommended by their consultant. The hydraulic model will be revised to reflect the agreed upon hydrology change.
- Grand County BLE: A countywide BLE/Discovery effort was initiated for all flooding sources with drainage areas greater than a square mile within the county. A kickoff meeting with communities will take place in the next few months.

Gunnison Basin – Delta, Gunnison, and Ouray Counties have ongoing studies:

- Delta County Phase 3. Consultation Coordination Officer (CCO) meetings were held on June 5 and 6, 2024 and several public meetings (including two Spanish-only open houses in the City of Delta and Town of Hotchkiss) were held during the week of June 10th. The state-funded Minnesota Creek LOMR will update flood hazard information through Paonia and bridge an existing data gap near the confluence with the North Fork Gunnison River. LOMR hydraulic results and revised flood hazard mapping were shared with communities for review and comments have been addressed. The LOMR has been submitted to FEMA for processing.
- Ouray County BLE: Hydraulic modeling for the countywide BLE/Discovery effort (for drainage areas greater than one square mile) has been completed and submitted for review. The countywide project does not include flooding sources included in the Ouray County PMR. A kickoff meeting for the countywide project was held with communities on April 17, 2024. We are preparing materials for the Discovery meeting, which will be scheduled soon.
- Gunnison County PMR: Hydraulic modeling had been approved by FEMA but CWCB is still waiting for an intergovernmental agreement between the City of Gunnison and Gunnison County. The agreement is to address floodplain management along the Gunnison River hydraulic

modeling reaches where the flood hazard data impacts both the City of Gunnison and Gunnison County. Gunnison County has expressed concerns regarding regulating to 2D hydraulic modeling products along the Gunnison River and are requesting consideration of 2D-informed 1-dimensional (1D) models for portions of the major flooding sources for regulatory purposes. The City of Gunnison and Gunnison County are hoping to work on an agreement where Gunnison County areas will mostly be 1D hydraulic models, while Gunnison River hydraulic modeling through the City will remain a 2D model. There have been significant project delays but there appears to be progress on the agreement.

- To keep the PMR moving forward to complete portions of Gunnison, CWCB and FEMA are considering reducing the PMR scope to only include flood hazard revisions along Coal Creek near Crested Butte. CWCB has also worked with FEMA for acceptance of a more representative flood hazard mapping approach within Crested Butte and mapping shallow flooding areas for flood hazard in wide overbanks where traditional floodway mapping is not appropriate. If the PMR scope is reduced, the remaining flooding sources originally included as part of the PMR will be revised in conjunction with the Countywide Phase 2 project.
- Gunnison County Phase 2: CWCB is working to finalize the Phase 2 scope with Gunnison County. The County would prefer to have as many 1D models as possible (versus 2D hydraulic models). CWCB has agreed to provide the 1D products in areas with significant development pressure, but due large number of stream miles to be revised the project cannot provide 1D modeling for the entire county. County staff are working to approve a revised MOA with an exhibit showing limits of preferred 1D models. Once this is provided, the countywide project may move forward.

Rio Grande Basin – Alamosa, Costilla, and Mineral Counties have ongoing studies:

- Alamosa County BLE: BLE modeling and draft mapping data for Phase 1 of the countywide study is wrapping up. Modeling near the City of Alamosa has been complex. Discovery meeting materials are being prepared for review. CWCB has coordinated with the City of Alamosa, USACE and FEMA, as the city works toward certification for portions of the existing levee system along the Rio Grande River. After verifying the USACE funding was not able to be used to assist the community with levee issues, it was determined that CWCB will continue the flood hazard delineation study in Alamosa County through the Risk MAP process. The City is working to have USACE provide a feasibility study for the Rio Grande levee systems and is looking to apply for other funding to assist in getting portions of the levee system certified, accredited by FEMA, and allowed to be shown on the revised flood hazard mapping as providing flood protection. USACE inspected the levee on May 22/23, 2024, and the information collected will be discussed with communities during the Discovery meeting. The City's involved partnership with USACE levee process will take several more years before portions of the levee system will be shown to provide flood protection. At Alamosa County's request, CWCB has asked that FEMA consider allowing portions of unincorporated Alamosa County outside the City to move forward with the Risk MAP study process. There is significant development pressure in the County and accurate, digital flood hazard mapping will support the County floodplain management and regulation.
- Costilla County Phase 2-3: CWCB continues working with our contractor to complete data development for the remaining effective Zone A stream reaches. Data development has only been possible once high-resolution LiDAR data for these areas was obtained. Hydraulic modeling is on hold for submittal to FEMA review due to some questions that CWCB is working to address

concerning four effective Zone A Rito Creek tributaries and a small mining area. Once resolved, the study will move forward with appropriate modeling and mapping to reflect existing flood hazard that appears to be more representative than effective mapping.

- Mineral County: Mineral County's appeal period ended on June 14, 2024. We are unaware of any appeals or comments at this time and are checking with FEMA for confirmation. If no appeals were received, the project can move toward a Letter of Final Determination (LFD).

Arkansas Basin – Lake, Chaffee, Custer, Fremont, Pueblo, El Paso, Huerfano, Las Animas, Otero, Bent, Prowers, Baca, Crowley, and Kiowa Counties have ongoing studies:

- Lake County Phase 2: Hydraulic modeling along Georgia Gulch has been completed and submitted to FEMA. Once all modeling and mapping for Georgia Gulch is approved by FEMA, CWCB will coordinate with the communities and hold a Resilience meeting that will include reviewing the revised flood hazard data and discussing changes in flood risk for all flooding sources included in the study.
- Chaffee County Phase 2: Hydrology was approved November 27, 2023 and our contractor is working on hydraulic modeling. Currently, we are working on a shallow flooding area in Buena Vista and we will be holding a meeting with the community to discuss a path forward. Once that occurs, hydraulic modeling will be wrapped up and submitted to FEMA for review.
- Custer County Phase 2: CWCB has been working with FEMA to accommodate community requests for revised or newly identified flood hazard mapping for streams near existing communities. Additional approximate and detailed flood hazard mapping requested will result in more accurate mapping for impacted communities on flooding sources near the Town of Westcliffe and Town of Silver Cliff. This approximate flood hazard mapping will inadvertently extend into portions of unincorporated Custer County to confluence with Grape Creek.
- Pueblo County Phase 2: CWCB revised our contractor's scope to scale back pre-levee assessment efforts (as requested by FEMA) included in the original Phase 2, Year 1 task order. The revised task order has been issued and the contractor is moving forward with the survey task. Letters will be sent to property owners notifying them of surveyors in the area in the next few weeks.
- Huerfano County Phase 2: CWCB has coordinated with incorporated communities and Huerfano County on mapping of floodways and shallow flooding areas along the major flooding sources. CWCB funded an additional task order for our consultant to remodel a few small areas with 1D methods instead of the original 2D, per recent community request. The hydraulics package was submitted to FEMA in June and is anticipated to be completed by the end of the month.
- Bent County Phase 2: This floodplain mapping project continues to be on hold as CWCB and FEMA allow the Arkansas River Conservancy District (levee sponsors) to work towards completing the Arkansas River South Levee analysis and certification. There was a meeting December 5, 2023, to discuss proposed approaches for levee certification. The existing levee has previously provided flood protection to the City of Las Animas and portions of unincorporated Bent County. The levee sponsors are working with their contractor to obtain certification and accreditation for the levee so the revised flood hazard mapping would reflect this levee segment as providing flood protection in the Bent Countywide Risk MAP study. CWCB, FEMA, and USACE will continue to coordinate and support the communities and levee sponsors as progress toward

levee certification continues. In addition, CWCB provided state funding to develop an Emergency Preparedness Plan and Interior Drainage Analysis for this levee. The EPP has been provided to CWCB for review. Both the EPP and Interior Drainage Analysis products are required as part of the certification and will be included by the levee sponsors as part of their levee certification package. CWCB has made a one-time funding contribution for the sponsors to complete the geotechnical evaluation. Results of the geotechnical information is being used to provide an accurate assessment and identification of the level of effort needed for work associated with obtaining levee certification.

- Otero County Phase 2: Hydraulic modeling is going through FEMA technical review, and we hope the updated submittal will be approved in the coming weeks. This will update floodplain mapping in the Apishapa River area to provide more representative flood risk information.
- El Paso Phase 2 and Templeton Gap (T-Gap) Levee: Data Development continues for updated hydraulic modeling for the El Paso countywide Risk MAP study. CWCB has provided funding to support coordination between our Risk MAP team and the LOMR Review Partners Team to coordinate on acceptable hydrologic and hydraulic modeling approaches for relative consistency with the ongoing El Paso County study for development projects underway and proposed within these communities. The study also includes addressing data gaps noted in the Templeton Gap pre-levee analyses. While the levee has been shown to provide flood protection in the past, it is not certified/accredited. CWCB's team is working with the City of Colorado Springs, the USACE and FEMA on updated flood hazard mapping in this area. Certification is required to allow the revised flood hazard mapping to reflect the levee providing flood protection. The City of Colorado Springs funded revised hydrology for the Templeton Gap area that is being used in the hydraulic updates. El Paso County hydrology was approved by FEMA on 2/13/2024 and we are wrapping up the Phase 2 hydraulic modeling for the countywide study.
- Las Animas County Phase 2: We are repurposing FEMA FY22 grant funds originally identified for Phase 3 and 4 tasks to help cover the data development for community-requested additional flooding sources. Hydrology and hydraulics revisions are underway. Our consultant obtained additional field survey in March 2024. The joint hydrology and hydraulics submittal is anticipated for late September.
- Fremont County Phase 2: We are wrapping up detailed hydraulic model development for Phase 2. Floodway development is also taking place. Data will be provided to FEMA for review and approval soon. We had a meeting with FEMA on March 24th to discuss some 2D modeling nuances that need to be addressed before we finalize modeling and mapping and received guidance from FEMA on June 21st. We are scheduling a meeting with communities to get their input on floodways due to the guidance received.
- Prowers County Phase 2: Base floodplain models are complete and approved. Floodway analysis will be submitted for FEMA review and approval now that base models are finalized, anticipated for mid-August. The Flood Risk Review meeting is anticipated to take place in the coming months.
- Towns of Granada/Holly/Lamar (Prowers County) Pre-Levee assessments: The Lamar Levee Analysis and Mapping Procedure (LAMP) has been completed. State-funded Interior Drainage Reports and Emergency Preparedness Plans (EPPs) have been reviewed by CWCB and we are wrapping up comments/input by the communities for inclusion into the EPPs. USACE inspected

the Holly levee on May 15, 2024, and the community will provide information once they receive the final USACE report.

- Kiowa County BLE: A countywide BLE/Discovery effort is underway for all flooding sources with drainage areas greater than a square mile within the county. We have been coordinating with the contractor and FEMA on the appropriate way to model playas, which occur throughout the eastern plains. The BLE submittal to FEMA is anticipated for mid-July. A kickoff meeting with communities took place in December and we will hold a Discovery meeting in the next few weeks.
- Baca County BLE: The BLE model-only submittal has been approved by FEMA and we are working on the full submittal, which we anticipate submitting in August. The Discovery products are in CWCB's court to review, for a meeting with communities in the next few months.
- Crowley County BLE: A countywide BLE/Discovery study is underway for all flooding sources with drainage areas greater than a square mile within the county. The BLE submittal is being reviewed by FEMA and Discovery materials are being prepared for a meeting with communities in the next month or so.

Yampa/White Basins –Moffat and Routt Counties have ongoing Risk Map studies:

- Moffat County Phase 2-3: Hydraulic models for specific flooding sources have been approved by FEMA. CWCB finally received FEMA approval on recommended mapping options along Fortification Creek within the City of Craig. We are proceeding with the updated floodplain mapping and were able to share results with the communities on March 21, 2024. Communities provided minor comments and questions to date. We are now moving to finalize floodplain mapping and prepare the non-regulatory products for a Resilience meeting very soon.
- Routt County BLE: We received funding to initiate a countywide BLE/Discovery effort for all flooding sources with drainage areas greater than a square mile within the county. We are waiting for the new contractor master contracts to be in place before negotiating a scope and fee with one of the contractors. Once that occurs, a kickoff meeting with communities will be scheduled.

Dolores/San Juan Basins – La Plata, Dolores, Montezuma, and Archuleta Counties, along with the Southern Ute Indian Tribe (SUIT) and Ute Mountain Ute (UMU) Tribe nations, have ongoing studies.

- Southwest Colorado (Montezuma, Dolores, San Juan, La Plata, Archuleta, Hinsdale, Mineral Counties and the SUIT and UMU Tribes) Phase 2: The Phase 2 scope of work is being finalized for detailed study stream reaches following the Phase 2 kickoff meetings that took place in May 2024. CWCB has an approved FEMA grant amendment that allows the reallocation of secured funding from the Phase 3-4 scopes of work tasks to accommodate the data development for some of the additional streams that were requested by communities during the Discovery meetings in 2022, and requested funding from the FY24 grant will cover the remaining streams if accepted. Additional funding for re-scoping the Phase 3-4 tasks will be requested in a future FEMA CTP grant cycle.

Multi-Basin Risk Map Projects: Elbert, Mesa, Hinsdale, Lincoln, Saguache, San Miguel, and Teller Counties have ongoing studies that span multiple water basins.

- Elbert County Phase 2: Data Development is underway. Hydrology has been approved and hydraulic modeling is currently being reviewed by FEMA
- Mesa County Phase 2: Hydraulics for the Colorado River are approved. The remaining countywide flood hazard mapping is under FEMA review, and we expect approval in the coming weeks. CWCB has funded an additional scope of work to get Adobe Creek tie in issues handled with the main Colorado River reach near Grand Junction, CO.
- Flood Risk Information System (Mesa County): Based on additional staff input, minor modifications are being performed on the draft website for this Flood Risk Information System (FRIS) pilot project. CWCB and our Contractor will meet with communities in Mesa County to showcase the site and obtain additional input. Once community feedback has been adequately addressed, the site will go live. This project was preliminarily shown to the Mesa County floodplain administrator in September 2023, and we are very close to wrapping up deliverables.
- Hinsdale County/Lake City Partial Countywide: The LFD was issued March 12, 2024, and will go effective on September 12, 2024.
- Hinsdale Countywide Phase 2: Field survey efforts have been completed and the task deliverables will be submitted to FEMA soon. Hydrology is underway and anticipated for submittal in late June.
- Teller County Phase 2: CWCB's Contractor has completed the revised hydrologic analyses for Trout Creek and Fountain Creek. Additional analyses were required to verify flows were reasonable and in line with existing flood flows for the same flooding sources in adjacent counties. FEMA review comments have been addressed for the revised hydrology and has been resubmitted for final approval. Updated reports on the results will soon be shared with the appropriate communities. Hydraulic analysis is underway.
- San Miguel Countywide BLE: A countywide BLE/Discovery effort has been initiated for flooding sources with drainage areas greater than one square mile that were not included in the San Miguel PMR (more updates under the CHAMP Ph3 category below). This effort is on hold awaiting approval of the Telluride LOMR. Once that occurs, an in-person kickoff meeting with communities will be scheduled.
- Lincoln County BLE: A countywide BLE/Discovery effort is underway for flooding sources with drainage areas greater than a square mile that were not included with the ongoing Lincoln County PMR revisions (summarized below). CWCB's Contractor has completed the BLE modeling, and the Discovery meeting took place on March 11, 2024, to share BLE results and reports. Review comments have been addressed and sent back for approval.
- Montrose County BLE: A countywide BLE/Discovery effort is being initiated for all flooding sources with drainage areas greater than a square mile within the county. We are working on issued that contractor's task order and after that occurs, a kickoff meeting with communities will be scheduled.

- Colorado Hazard Mapping Program (CHAMP) Phase 3: This set of studies originated from the Colorado Senate Bill (15-245) which was put forth as a response to the destructive 2013 flooding along the Front Range. This bill released funding to better assess and map various flood related hazards, including debris flows and erosion, throughout Colorado. In this phase CWCB funded a paper inventory reduction effort through various counties across the state. This would replace and update effective FIRM panels with updated digital flood hazard information. Counties that were affected by 2013 floods where local conditions were clearly changed. Several county projects that were scoped as part of this CHAMP effort are still ongoing, including the ones listed below.
- San Miguel County PMR: This PMR has been on hold for over almost three years pending as-constructed data from the Town of Telluride for the Valley Floor Restoration project. The Valley Floor Restoration project completely re-aligned the San Miguel River to its historic location through open space areas west of the Town. The dramatic changes along the San Miguel River resulting from the project are being revised with an ongoing LOMR on the effective FIRM and FIS information. Once the LOMR has been issued, the as-built project data will be incorporated into the updated San Miguel River hydraulic analysis and flood hazard mapping for the PMR. CWCB will coordinate with San Miguel County communities through in-person meetings to wrap up the Data Development (Phase 2) before moving forward with development of preliminary products (Phase 3).
- Lincoln County Phases 2-3: The Letter of Final Determination was issued on March 12, 2024, and the effective date for this project is September 12, 2024.
- Saguache County: Floodplain mapping has been approved by FEMA for all areas submitted outside of the Town of Crestone. The preliminary products were distributed on January 12, 2024, and the community had 30 days to review and provide feedback on the preliminary products. No comments or issues were raised, and now we are working to prepare the CCO and Public Meeting materials so we can meet again with the communities in the coming weeks.

(Terri Fead, Marta Blanco Castaño)

Chris Sturm Honorable Mention to Prestigious Governor's Award

On May 7, 2024, Governor Polis announced the winners of the Tom Clements Awards, recognizing innovative and hardworking state employees who dedicate their time and energy to deliver real results to Coloradans, elevate the standard of excellence in government, and adapt systems and processes to serve Coloradans most efficiently and effectively. These awards honor Tom Clements, a dedicated public servant, who was killed in March of 2013 while serving as Executive Director of the Department of Corrections. This award reflects Colorado's commitment to building a lasting culture of operational excellence and customer service to ensure Coloradans can access the quality services they deserve.

The awards were presented in two classes – Outstanding Innovation in Government and Outstanding Service in Government.

Chris Sturm, Watershed Program Director in the Watershed and Flood Protection Section, was awarded an Honorable Mention for the Outstanding Innovation in Government award. Chris was nominated based on his work managing the Colorado Watershed Restoration Program, the development of the

Fluvial Hazard Zone Mapping Program, his tireless efforts in the 2013 Colorado Flood Recovery, and his recent development of the Wildfire Ready Watersheds Program.

This award was mentioned verbally at the May CWCB Board Meeting, but the award was issued after the board notebooks had been distributed for this meeting.

Congratulations Chris on this very well deserved award!

(Kevin Houck)

Staff Attends National Floodplain Managers Conference in Salt Lake City

Members of the Watershed and Flood Protection Section attended the Association of State Floodplain Managers (ASFPM) Annual Conference in Salt Lake City in the last week of June. ASFPM is a national professional association of floodplain managers dedicated to reducing flood losses throughout the nation. The purpose of the conference is to inform and educate floodplain management professionals throughout the U.S., discuss challenges/best practices, discuss lessons learned, and connect with other floodplain management professionals.

Presentations on CWCB's Floodplain Mapping Program and the Colorado Flood Threat Bulletin were made by CWCB staff and their consultants.

Over 1,700 professionals from around the country attended the event, and the presentations regarding CWCB programs were well attended and well received. Other topics presented at the conference and attended by CWCB staff included FEMA's Future of Flood Risk Data (FFRD) initiative, Elevation Certificate trainings, floodplain management compliance, state floodplain management initiatives, flood after fire scenarios, and flood insurance policy discussion.

(Kevin Houck)

WATER SUPPLY PLANNING SECTION UPDATES

Director's Report - Water Supply Reserve Fund Grants Director's Report – July 2024

WATER SUPPLY RESERVE FUND GRANTS:

The following table summarizes the Water Supply Reserve Fund Grants \$50,000 and under and sent to CWCB Director, Lauren Ris, for approval.

Basin	Applicant/Grantee	Name of Water Activity	Basin(s) Account Request	Statewide Account Request	Total Request	Staff Funding Recommendation
Arkansas	Purgatoire River Water Conservancy District	Chilili Ditch Diversion Infrastructure Replacement – Design Phase	\$3,120	\$23,400	\$26,520	\$26,520
Gunnison	Arch Ditch Association	Arch Ditch Automation	\$35,000	\$0	\$35,000	\$35,000

INSTREAM FLOW

Director's Report Attachment – CWCB July 17-18, 2024, Board Meeting Stream and Lake Protection Section De Minimis Cases

The following table summarizes applications that have the potential to injure the Board's instream flow water rights, but the impact is considered de minimis. In these cases, the cumulative impact to the Board's right is less than 1%. Pursuant to ISF Rule 8(e) (the de minimis rule), staff has not filed a Statement of Opposition in these cases and has provided the required notification to the Division Engineers and applicants.

Division	Case No.	Applicant	Stream/ Segment ID	ISF Amount	Percent Injury (%)	Cumulative % Injury	Count
4	24CW3015	David L. Mollenberg	East Creek 14/4/A-007	1.6 (3/15 - 5/31)	0.32230 0.00000	0.32230 0.00000	1
5	24CW3046	Tod and Jannette Ammerman	Colorado River 5-80CW446	135 (1/1 - 12/31)	0.00010 0.00010	0.15048 0.10279	48
5	24CW3046	Todd and Janette Ammerman	Colorado River 5-80CW447	90 (1/1 - 12/31)	0.00020 0.00020	0.20888 0.14124	48
5	24CW3046	Todd and Janette Ammerman	Colorado River 5-80CW448	150 (1/1 - 12/31)	0.00010 0.00010	0.13907 0.09675	51
5	24CW3046	Todd and Janette Ammerman	Fraser River 5- 90CW308B	30 (5/15 - 9/15) 19 (9/16 - 5/14)	0.00060 0.00090	0.04007 0.04629	19

July 17-18, 2024 Board Meeting Instream Flow and Natural Lake Level Program Summary of Resolved Legal Protection Cases

The Board's Instream Flow ("ISF") Rule 8i(1) states:

In the event the pretrial resolution includes terms and conditions preventing injury or interference and does not involve a modification, or acceptance of injury or interference with mitigation, the Board is not required to review and ratify the pretrial resolution. Staff may authorize its counsel to sign any court documents necessary to finalize this type of pretrial resolution without Board ratification.

Staff has resolved issues of potential injury in the following water court cases. Staff had (A) filed Statements of Opposition in the case listed below; and (B) obtained an agreement via a letter-in-lieu of filing a Statement of Opposition in 3 other case(s).

A. STATEMENTS OF OPPOSITION

1. Case No. 22CW3077 (Water Division 5) - Application of Spring Falls Ranch, LLC

The Board ratified this Statement of Opposition at its November 2022 meeting. Applicant requested “Conditional Underground Water Right, Conditional Surface Water Right, Conditional Storage Rights, Approval of Plan for Augmentation, and Conditional Appropriative Right of Exchange”. Staff, in cooperation with the Attorney General’s Office, has negotiated a settlement to ensure that the CWCB’s instream flow water rights will not be injured. CWCB’s stipulation was approved by the Court on May 28, 2024. All parties have stipulated. This case remains pending before the water court Referee.

The CWCB holds instream flow ("ISF") water rights, including the following, in Water Division 5 in the Roaring Fork River watershed that could be injured by this application:

Case Number	Stream	Upper Terminus	Lower Terminus	CFS Rate (Dates)	Approp. Date
W-1954 (1973)	Lime Creek	10,000 ft elevation	confl Fryingpan River	1.5 (10/1 - 3/31) 3 (4/1 - 9/30)	07/12/1973
W-1955 (1973)	Fryingpan River	confl NF Fryingpan River	confl Ruedi Reservoir	30 (10/1 - 3/31) 200 (6/1 - 6/30) 150 (5/1 - 5/31) 100 (4/1 - 4/30) 100 (7/1 - 7/31) 75 (8/1 - 8/31) 65 (9/1 - 9/30)	07/12/1973
W-1945 (1973)	Fryingpan River	confl Rocky Fork Creek	confl Roaring Fork River	39 (11/1 - 4/30) 110 (5/1 - 10/31)	07/12/1973
85CW0639	Roaring Fork River	confl Fryingpan River	confl Crystal River	75 (10/1 - 3/31) 145 (4/1 - 9/30)	11/08/1985

In addition to standard terms regarding measuring devices, accounting and retained jurisdiction, the Applicant has agreed to the following additional protective terms and conditions:

- “During a local call, the Spring Falls Upper Pond will be lowered commensurate with the evaporation rate as shown on [decree] Table 4 until the water surface area is reduced to 0.229 acres. Pursuant to C.R.S. § 37-92-102(3)(b) at this surface area, the Spring Falls Upper Pond does not need to be augmented for replacement of evaporation with respect to CWCB’s instream flow water rights on Lime Creek, the Fryingpan River and the Roaring Fork River decreed in Case Nos. W-1954, W-1955, W-1945 and 85CW639 (“ISFs”), because the Spring Falls Upper Pond with surface area totaling 0.229 acres (of the claimed 0.395 surface acres) was in place and being used at the time of the appropriation of the ISFs. Alternatively, the Spring Falls Lower Pond and/or Spring Falls Augmentation Pond can be utilized to augment the enlarged surface area of Spring Falls Upper Pond.
- Similarly, pursuant to C.R.S. § 37-92-102(3)(b), the Spring Falls Lower Pond and Spring Falls Augmentation Pond do not need to be augmented for replacement of evaporation, up to 0.230 surface acres, with respect to the ISFs because, as described in paragraphs 10.N and 11.N, the Lower Bench Ponds totaling 0.230 surface acres were in place and being used at the time of appropriation of the ISFs. Any evaporative depletions from surface area in excess of 0.230 acres are not subject to C.R.S. §37-92-102(3)(b) and must be replaced to an ISF call. The Lower Bench Ponds are being reconfigured into the Spring Falls Lower Pond and Spring Falls Augmentation Pond. The primary source of augmentation during local call is the Spring Falls Augmentation Pond. An example extreme dry year augmentation schedule for a local call is provided in Table 10. Alternatively, the Spring Falls Lower Pond can be utilized for augmentation.
- The Applicant claimed augmentation use but the ISF water rights are not subject to augmentation use. The CWCB’s ISF water rights are not subject to § 37-92-102(3)(b), C.R.S., with respect to any fill or refill following the release of stored water applied to the augmentation use attributable to the Spring Falls Lower Pond and the Spring Falls Augmentation Pond.
- This operation of § 37-92-102(3)(b), C.R.S., shall not and does not result in the general subordination of the CWCB’s ISF water rights to any other water rights junior to the ISF water rights, and the ISF water rights will be administered under the prior appropriation system and applicable law in relation to all other water rights.”

B. LETTERS-IN-LIEU

The following cases were resolved by Staff through negotiated letters in lieu of filing water court Statements of Opposition. This method of settlement is preferred when facts and time allow such negotiation before the Statement of Opposition period ends. In each case, CWCB staff will continue to monitor the proposed rulings and decrees. In each case, Applicant has agreed to not oppose a motion to intervene if the agreed upon terms are not included. The following were negotiated to resolution:

1. Case No. 24CW3045 (Water Division 1) - Application of City of Greenwood Village

During the April 2024 Water Court Resume Review, CWCB staff identified concerns regarding potential injury to CWCB’s instream flow water rights decreed in Case No. 94CW0246 on Cherry Creek. This case was resolved with CWCB by a letter agreement, June 28, 2024, by which CWCB agreed not to file a Statement of Opposition, provided Applicant incorporates the following terms and conditions into any

draft and final decrees and Applicant agrees to not oppose a motion to intervene by CWCB if such terms and conditions are not included.

Decree Term:

- "Colorado Water Conservation Board Instream Flow Right. The Colorado Water Conservation Board holds an instream flow water right on Little Dry Creek decreed in Case No. 93CW100, Water Division 1, for 2.20 cubic-feet-per-second with a July 22, 1993 appropriation date (CWCB ISF Right). The CWCB ISF Right between the confluence of Greenwood Gulch and South Clarkson Street is subject to historical operation of the three on-channel MPNP Pond water rights claimed herein. In particular, pursuant to §37-92-102(3)(b), C.R.S., and in recognition of Applicants' historical water uses pursuant to practices that existed as of the date of the appropriation of the CWCB's Right, the refill of the MPNP Ponds for the limited purpose of replacing evaporative losses from the in-pond uses, as necessary based on the MPNP Ponds current surface areas, shall not be subject to administration during a call by the CWCB's Right. This operation of § 37-92-102(3)(b), C.R.S., shall not interfere with the administration of the MPNP Ponds in priority as against other water rights, and shall not result in general subordination of the CWCB's Right to any other water rights."

2. Case No. 23CW3222 (Water Division 5) - Application of The Colorado Division of Parks and Wildlife and the Parks and Wildlife Commission

During the December 2023 Water Court Resume Review, CWCB staff identified concerns regarding potential injury to CWCB's instream flow water rights decreed in Case Nos. W-2720(1975), W-2721(1975), 80CW0119 and 80CW0120 on the Crystal River. This case was resolved with CWCB by a letter agreement, dated May 17, 2024, by which CWCB agreed not to file a Statement of Opposition, provided Applicant incorporates the following terms and conditions into any draft and final decrees and Applicant agrees to not oppose a motion to intervene by CWCB if such terms and conditions are not included.

Decree Terms:

- Beaver Lake is located upstream of several instream flow water rights on the Crystal River decreed to the Colorado Water Conservation Board ("CWCB"), which are junior to CPW's existing storage right for Beaver Lake. Accordingly, fill and refill to replace evaporation in Beaver Lake under the decree entered in Case No. CA5884 is senior to the instream flow water rights based on decreed priority.
- This application sought to adjudicate the previously undecreed capacity that was in existence and use at the time of the original Beaver Lake adjudication. Accordingly, the absolute uses are uses made "pursuant to appropriation or practices in existence" when the instream flow water rights were appropriated as decreed in Case Nos. W-2720, W-2721, 80CW119, and 80CW120. These instream flow water rights are subject to the fill and refill of the previously undecreed capacity of Beaver Lake under to section 37-92-102(3)(b), C.R.S.

- However, because the conditional uses are new claims, those will be administered junior to the instream flows water rights. Filling and refilling of Beaver Lake after any releases are made for the uses under [application] paragraph 3.F.ii are subject to the instream flow water rights and diversions to storage in Beaver Lake will not occur when those instream flow water rights are not met and are being administered.
- The subordination of these instream flow water rights to the Applicant's junior absolute claims as decreed herein shall not interfere with the administration of the junior absolute claims as against other water rights, and shall not result in general subordination of the CWCB's Crystal River instream flow rights to any other water rights junior to these instream flow water rights.
- Administrative Exchanges, Substitutions, or Other Such Operations. Paragraph 3.F.ii of the application states that CPW may use the water right for "augmentation, replacement, substitution, and use by exchange," and that CPW may "divert the water right by exchange for use along the Colorado River and its tributaries," but the application does not include any claims of appropriative rights for such mechanisms. Therefore such operation requires an administration approval or future decree. To extent such operation is approved by the division of water resources to move the water, or use the water, at currently undefined locations, such operation must not interfere with or prevent CWCB from beneficially using the full amount of its intervening instream flow water rights to which it would have been legally entitled in the absence of such operation.

3. Case No. 23CW3040 (Water Division 6) - Application of Colorado Division of Parks and Wildlife and Parks and Wildlife Commission

During the December 2023 Water Court Resume Review, CWCB staff identified concerns regarding potential injury to CWCB's instream flow water rights decreed in Case No. W-3652C(1977) on the White River. This case was resolved with CWCB by a letter agreement, dated May 17, 2024, by which CWCB agreed not to file a Statement of Opposition, provided Applicant incorporates the following terms and conditions into any draft and final decrees and Applicant agrees to not oppose a motion to intervene by CWCB if such terms and conditions are not included.

Decree Term:

"CWCB Instream Flow Rights: As stated in the decree entered in Case No. 04CW227, by agreement with the Colorado Water Conservation Board ("CWCB"), Applicant will not use the Imes and Reynolds Ditch for diverting water into Johnnie Johnson Reservoir under the alternate point of diversion for the Johnnie Johnson storage right, or under the alternate point of diversion for the Rio Blanco Lake Feeder Ditch direct flow right of .6 cfs, if such diversions would cause the CWCB's instream flow water right for 200 cfs on the White River, decreed in Case No. 77W3652C, to drop below 200 cfs between the headgate of the Rio Blanco Feeder Ditch and the headgate of the Imes and Reynolds ditch or if the flow between these points is below 200 cfs. Provided, however, that this provision shall not be construed as imposing upon Applicant any additional monitoring or measurement obligations or require Applicant to install any additional streamflow measurement devices beyond those required by the Division Engineer under this decree or the decree entered in Case No. 04CW227."



COLORADO

**Colorado Water
Conservation Board**

Department of Natural Resources

1313 Sherman Street
Denver, CO 80203

P (303) 866-3441
F (303) 866-4474

Jared Polis, Governor

Dan Gibbs, DNR Executive Director

Lauren Ris, CWCB Director

TO: Colorado Water Conservation Board Members

FROM: Kirk Russell, P.E., Finance Section Chief

Board Meeting: July 17-18, 2024 Board Meeting

Directors Report: Water Project Loans
Interest Rates

Introduction

The CWCB establishes interest rates bi-monthly for the Water Project Loan Program (per Financial Policy #7).

The current rates for a 30-year term are as follows:

- 2.05% - Agricultural
- 2.90% - Low-income Municipal
- 3.30% - Middle-income Municipal
- 3.70% - High-income Municipal
- 6.00% - Commercial
- 2.00% - Hydroelectric

The standard loan term is 30 years. Rates are reduced by 0.25% for 20-year loans, and by 0.90% for 10-year loans. Rates are increased by 0.25% for 40-year loans.

The rates can also be found on the CWCB web site under the “Loans and Grants” tab. These rates will be applicable for loans presented at this Board meeting.





COLORADO

**Colorado Water
Conservation Board**

Department of Natural Resources

1313 Sherman Street, Room 718
Denver, CO 80203

P (303) 866-3441
F (303) 866-4474

Jared Polis, Governor

Dan Gibbs, DNR Executive Director

Lauren Ris, CWCB Director

TO: Colorado Water Conservation Board Members

FROM: Matthew Stearns, P.E., Project Development

DATE: July 17-18, 2024 Board Meeting

DIRECTORS REPORT: Water Project Loan Program
Prequalified Project List and Loan Prospect Summary

The Finance Section compiles a list of prequalified projects for the Water Project Loan Program. In order to be included on this list, potential borrowers must submit a Loan Application and three years of financial statements to the CWCB staff. In addition, Borrowers requesting to be placed on the Prequalification Project List have a defined project, have performed preliminary engineering, and have a reasonable estimate of the project costs.

Projects on this list fit the initial criteria of the Water Project Loan Program; however, the list does not constitute loan approval. In order to receive a loan, borrowers must additionally submit a completed Loan Feasibility Study for review by CWCB staff. Staff will then prepare a recommendation to the Board for approval at a future CWCB meeting. Projects will remain on this list for one year from the date of the application or until Board approval of a loan.



The Finance Section also compiles a list of potential borrowers/projects for the Water Project Loan Program. This list represents borrowers that have contacted the CWCB about a potential need for funding but have not submitted a loan application and loan feasibility study. Projects are also identified if they have a Health/Safety (*), Economic Impact (†), or Federal Match (‡) component.

BORROWER	PROJECT NAME	POTENTIAL LOAN AMOUNT
South Platte		
NISP Participants	NISP	\$750,000,000
Woods Lake Mutual Ditch Company	Culvert Replacement	\$150,000
Town of Kersey	Water Line Project	TBD
Riverside Reservoir and Land Company	Ditch Rehabilitation	\$250,000
Town of Bennett	Raw Water Tank	\$500,000
Evergreen Metro District	Evergreen Dam Enlargement	TBD
Left Hand Water District	Dry Creek Reservoir	TBD
Shawnee Water Consumers Association	Reservoir Rehabilitation	\$200,000
Boulder and White Rock Ditch & Res. Co.	Reservoir Dredging	TBD
Western Mutual Ditch Company	Reservoir Dredging	TBD
Bergen Ditch and Reservoir Company (*)	Reservoir Rehabilitation	\$140,000
Louviers Water and Sanitation District	Regional Connection	TBD
City of Fort Collins	Irrigation Ditch Piping	\$20,000,000
City of Fort Collins	Halligan Reservoir Enlargement	\$120,000,000
SPROWG Participants	SPROWG	\$1,800,000,000
City of Milliken (*)	Hillsboro Dam Rehabilitation	\$15,000,000
Colorado Parks and Wildlife (*)	Tarryall Dam Rehabilitation	\$5,000,000
Standley Lake Operating Committee	Reservoir Expansion	TBD
Switzerland Park HOA	Reservoir Rehabilitation	\$300,000
Danna Ortiz	Knouth Reservoir Rehabilitation	\$3,000,000
Loup Reservoir Company	Loup Reservoir Rehabilitation	TBD
Arthur Irrigation Company	Ditch Rehabilitation	TBD
Handy Ditch Company	Welch Reservoir Rehabilitation	\$1,000,000
Glacier Lake Property Owners	Glacier Lake Outlet Rehabilitation	TBD
Central, City of	Raw Water Pipeline	TBD
Denver, City of	Floodplain Improvement	TBD
Consolidated Mutual Water Company (*)	Reservoir Rehabilitation	TBD
Wadley Farms 3 HOA	Reservoir Rehabilitation	TBD
Loveland Lake and Ditch Company	Reservoir Rehabilitation	TBD
Inverness Water and Sanitation District	Reservoir Improvements	\$2,000,000
Cottonwood Water and Sanitation District	Reservoir Improvements	\$1,600,000
Arapahoe County W/WW Authority	Reservoir Improvements	TBD
Silver Lake Ditch Company	Tunnel Rehabilitation	\$150,000
Highland Ditch Company	Raw Water Pipeline	TBD
Larimer and Weld Irrigation Company	Diversion Dam Replacement	TBD
Subtotal		\$2,719,290,000



BORROWER	PROJECT NAME	POTENTIAL LOAN AMOUNT
Arkansas		
Town of Manitou Springs	Raw Water Pipeline	\$3,000,000
City of Woodland Park	Storage Project	\$1,000,000
Fort Lyon Canal Company	Adobe Creek Enlargement	\$8,000,000
Holbrook Ditch Company	Reservoir Enlargement	TBD
Lake County	New Reservoir	TBD
Catlin Canal Company	Canal System Improvement	\$1,500,000
Donala Water and Sanitation District	Ditch Construction	TBD
Mesa McKenna Mutual Ditch Company	Ditch Piping Project	TBD
Town of Avondale (*)	New Well	TBD
Fort Lyons Canal Company (+)	Diversion Structure Repair	\$500,000
Aguilar, Town of (‡)	New Augmentation Reservoir	TBD
Huerfano County	Water Rights Purchase	\$1,200,000
High Line Canal Company	Diversion Structure Repair	\$3,910,000
Lincoln Park Crooked Ditch Company	Ditch Rehabilitation	TBD
Huerfano Cucharas Irrigation Company	Reservoir Rehabilitation	\$200,000
Fruitland Water Company	Ditch Piping Project	\$400,000
Walsh, Town of	Water Rights Purchase	\$560,000
Deweese Dye Ditch Company	Outlet Pipe Rehabilitation	\$100,000
Triview Metropolitan District	New Reservoir	\$8,000,000
Subtotal		\$28,370,000
San Miguel/Juan		
Town of Bayfield	Ditch Piping Project	\$500,000
Redmesa Reservoir and Ditch Company(*)	Redmesa Reservoir Enlargement	\$11,500,000
City of Cortez	Distribution System (Loss Prevention)	\$10,000,000
Webber Ditch Company (‡)	Ditch Piping Project	TBD
Pagosa Area Water and Sanitation Dist.(*)	Raw Water Pipeline Rehabilitation	TBD
Farmers Water Development Company	Reservoir Rehabilitation	TBD
Lone Cone Ditch and Reservoir Company	Reservoir Rehabilitation	TBD
Sellers McClane Reservoir and Ditch Co.	Reservoir Rehabilitation	TBD
Forest Lakes Metropolitan District	Dam Rehabilitation	TBD
Subtotal		\$22,000,000
Colorado		
Orchard Mesa Irrigation District	Lateral Piping	\$300,000
Silt Water Conservancy District	Harvey Gap Reservoir	\$300,000
Middle Ditch	Ditch Piping Project	TBD
New Multa Trina Ditch Company (‡)	Ditch Piping Project	TBD
Gunther Covers	Christenson Dam	TBD
Town of Minturn	New Well Field	\$5,220,000
Flannery Water Company, LLC	Reservoir Rehabilitation	TBD
Fruita, City of	Reservoir Rehabilitation	TBD
Circle C Ranch	King Dam Rehabilitation	TBD
Royal Elk Ranch	Ditch Rehabilitation	\$2,000,000
Clifton Water District	New Reservoir	\$8,000,000
West Divide Water Conservancy District	Reservoir Purchase	TBD
Subtotal		\$15,820,000



BORROWER	PROJECT NAME	POTENTIAL LOAN AMOUNT
Gunnison		
Bostwick Park Water Conservancy District	Dam Construction	TBD
Ouray, City of	Water Supply Pipeline	\$750,000
Grand Mesa Water Users Association	Reservoir Rehabilitation	\$600,000
Crested Butte, Town of	Dam Outlet Rehabilitation	TBD
Lone Cabin Ditch Company	Ditch Rehabilitation	TBD
Otter Pond HOA	Dam Rehabilitation	\$650,000
Project 7 Water Authority	Raw Water Pipeline	TBD
Subtotal		\$2,000,000
North Platte		
Colorado Parks and Wildlife (*)	North Michigan Creek Reservoir	\$6,000,000
Walden, Town of	New Well	TBD
Subtotal		\$6,000,000
Rio Grande		
Manassa Land & Irrigation Co.	Ditch Rehabilitation	\$6,000,000
Baca Grande WSD	Water Rights Purchase	\$1,000,000
Sanchez Ditch and Reservoir Co.	Dam Rehabilitation	\$15,000,000
Rio Grande WCD - Subdistrict #1	Water Rights Purchase	\$5,000,000
Colorado Parks and Wildlife	Alberta Park Dam Rehabilitation	\$4,000,000
La Jara, Town of	System Rehabilitation	TBD
Crestone, Town of	Water Rights Purchase	\$200,000
San Luis Valley WCD	Water Rights Purchase	\$500,000
Rio Grande WCD	Water Rights Purchase	\$3,000,000
Crawford Water Conservancy District	Ditch Rehabilitation	\$1,200,000
Subdistrict 6	Water Rights Purchase	\$5,000,000
Subtotal		\$40,900,000
Yampa		
Town of Oak Creek (*)	Reservoir Rehabilitation	\$5,600,000
Rio Blanco WCD	Wolf Creek Reservoir	\$100,000,000
Bear River Reservoir Company	Stillwater #1 Dam Rehabilitation	TBD
Marc Etchart	Procter Reservoir Rehabilitation	TBD
Rio Blanco Water Conservancy District	Hydro Rehabilitation	\$2,000,000
Subtotal		\$107,600,000





COLORADO
**Colorado Water
Conservation Board**
Department of Natural Resources

1313 Sherman Street, Room 718
Denver, CO 80203
P (303) 866-3441
F (303) 866-447

Jared Polis, Governor
Dan Gibbs, DNR Executive Director
Lauren Ris, CWCB Director

To: Colorado Water Conservation Board Members

From: Kirk Russell, P.E., Finance Section Chief
Jessica Halvorsen, Program Assistant

Board Meeting: July 17-18, 2024 Board Meeting

Directors Report: Water Project Loan Program, Design & Construction Status Report

The CWCB Loan Program has Substantially Completed (13) projects in Fiscal Year 23/24 as shown in the Table. There are currently (45) projects authorized to receive loan funding totaling \$494M. There are (40) projects currently under contract and in the Design/Construction phase totaling \$296M. The attached spreadsheet summarizes the status of all loans. A detailed description about each project is provided on the CWCB website under Water Project Loan Program. www.cwcb.colorado.gov/loans-grants/water-project-loan-program

	Borrower	Project	County	Loan Amount	Complete
1	Sunnyside Park Ditch Company	Sunnyside Park Ditch Piping	Chaffee	\$510,915	8/1/23
2	City of Grand Junction	Carson Reservoir Dam Rehabilitation Project	Mesa	4,343,000	1/24/24 (a)
3	Orphan Wells of Wiggins	Kiowa Creek Dam Rehabilitation	Morgan	\$357,873	3/1/24
4	Billings Ditch Company	Billings Ditch Implementation Project	Rio Grande	\$126,250	3/1/24
5	East Mesa Water Company	East Mesa Emergency Ditch Repair	Garfield	\$43,347	5/1/24
6	Oxford Farmers Ditch Company	Chicosa Siphon Repair	Otero	\$1,323,979	5/1/24
7*	Tunnel Water Company	Headgate Improvements (Wildfire Impact)	Larimer	950,575	5/1/24
8*	Genesee Water and Sanitation District	Genesee Reservoir No. 1 Enlargement	Jefferson	\$5,122,625	6/1/24 (b)
9*	Ogilvy Augmentation Company	Loloff Reservoir Acquisition	Weld	\$1,140,290	6/1/24 (c)
10*	Root and Ratliff Ditch Company	Ditch Piping and Rehabilitation	Montezuma	\$250,408	6/1/24
11*	Grand Junction, City of	Kannah Creek Flowline Replacement	Mesa	2,246,326	6/1/24
12*	Glenwood Springs, City of	System Redundancy and Pre-Treatment Improvements	Garfield	\$3,777,754	6/1/24
13*	Triview Metropolitan District	Stonewall Springs Reservoir Complex	Pueblo	\$5,202,439	6/1/24 (d)
	* included in Director's Report		Total	\$25,395,781	

Fiscal Year 23/24 has added and preserved 4,731 acre-feet of reservoir storage; (a) 637; (b) 46; (c) 1,998; (d) 2,050





Project Description

On October 5, 2020, Governor Jared Polis issued Executive Order D 2020 208 declaring a Disaster Emergency due to the Cameron Peak Fire in Larimer County enabling State agencies to coordinate and make resources available for fire suppression, response, consequence management, and recovery efforts. At the September 2020 meeting of the CWCB, the Board established the 2020 Wildfire Impact Loans that are available to eligible applicants serving or receiving water from areas under a Governor's Emergency Declaration. The CWCB approved a Wildfire Impact Loan for this Headgate Improvements Project in March 2021.

During the unprecedented fire season of 2020, the Cameron Peak Fire damaged the watersheds supplying water to The Tunnel Water Company (Company). The Company was in need of immediate funding to install a self-cleaning trash rack that can reliably remove large fire debris from the headgate before flowing into the Laramie-Poudre Tunnel. This tunnel supplies raw water for the benefit of the Water Supply and Storage Company (WSSC) and Windsor Reservoir and Canal Company (WRCC). WSSC delivers irrigation water to its shareholders, primarily for agricultural irrigation on approximately 40,000 acres lying below the Larimer County Canal. WRCC delivers water to its municipal shareholders via the Soldier Canyon and Bellvue Water Treatment Plants. A Duperon® Self-Cleaning Trashrack system was installed to prevent debris from sliding down, accumulating and blocking the screen for the purpose of ensuring water flow through the Laramie-Poudre Tunnel. Construction was completed in 2021.

P R O J E C T D A T A		
<i>Sponsor:</i> The Tunnel Water Company	<i>County:</i> Larimer	<i>Water Source:</i> Laramie River
<i>Type of Project:</i> Ditch Rehabilitation-Wildfire Impact Loan		<i>Board Approval Date:</i> March 2021
<i>Terms of Loan:</i> 3yrs @ 0% and 27yrs @ 1.70% (Original) \$1,218,060.00 (Final) \$950,575.71		
<i>Design Engineer:</i> Lithos Engineering		
<i>Contractor:</i> Connell Resources		



Project Description

The Genesee Water and Sanitation District (District) was created in 1973 and services 1,442 taps and approximately 3,900 people in Genesee. Genesee Reservoir No. 1 was originally constructed in 1975 to provide a raw sewage lagoon for the District; however, it was later changed to a water augmentation reservoir for the District.

The Genesee Reservoir No. 1 Enlargement (Project) included final design, permitting, and construction of a 34AF enlargement to a 16AF reservoir bringing the total capacity to about 50AF. The Project included replacement of the synthetic liner, construction of a new tie-in to the District's raw water transmission line, a raise of the spillway, and construction of a parapet wall. This construction increased the raw water storage in the District by almost 50%, and provided greater operational flexibility and better drought protection. In addition to this loan, the District also received a \$1,384,000 Water Plan Grant in December 2020. Construction was completed in the Spring of 2024.

P R O J E C T D A T A		
<i>Sponsor:</i> Genesee Water and Sanitation District	<i>County:</i> Jefferson	<i>Water Source:</i> Bear Creek
<i>Type of Project:</i> Reservoir Enlargement		<i>Board Approval Date:</i> September 2020
<i>Loan Terms:</i> 40yrs @ 2.50% (Original) \$4,242,000.00 (Final) \$5,122,625.12		
<i>Design Engineer:</i> W.W. Wheeler & Associates, Inc.		
<i>Contractor:</i> Zak Dirt, Inc.		



Loloff Reservoir Acquisition

Ogilvy Augmentation Company
Substantially Complete June 1, 2024

Ogilvy Augmentation Company and Ogilvy Irrigation and Land Company purchased 20% and 80%, respectively, of Loloff Reservoir - a 1,998 AF reservoir in Weld County Colorado.



Project Description

The Ogilvy Augmentation Company (Company) allows for the operation of 15 irrigation wells within the Ogilvy Ditch System; these wells provide supplemental irrigation water supplies on approximately 1,400 acres from the eastern edge of Greeley, CO to farms east of Kersey, Colorado.

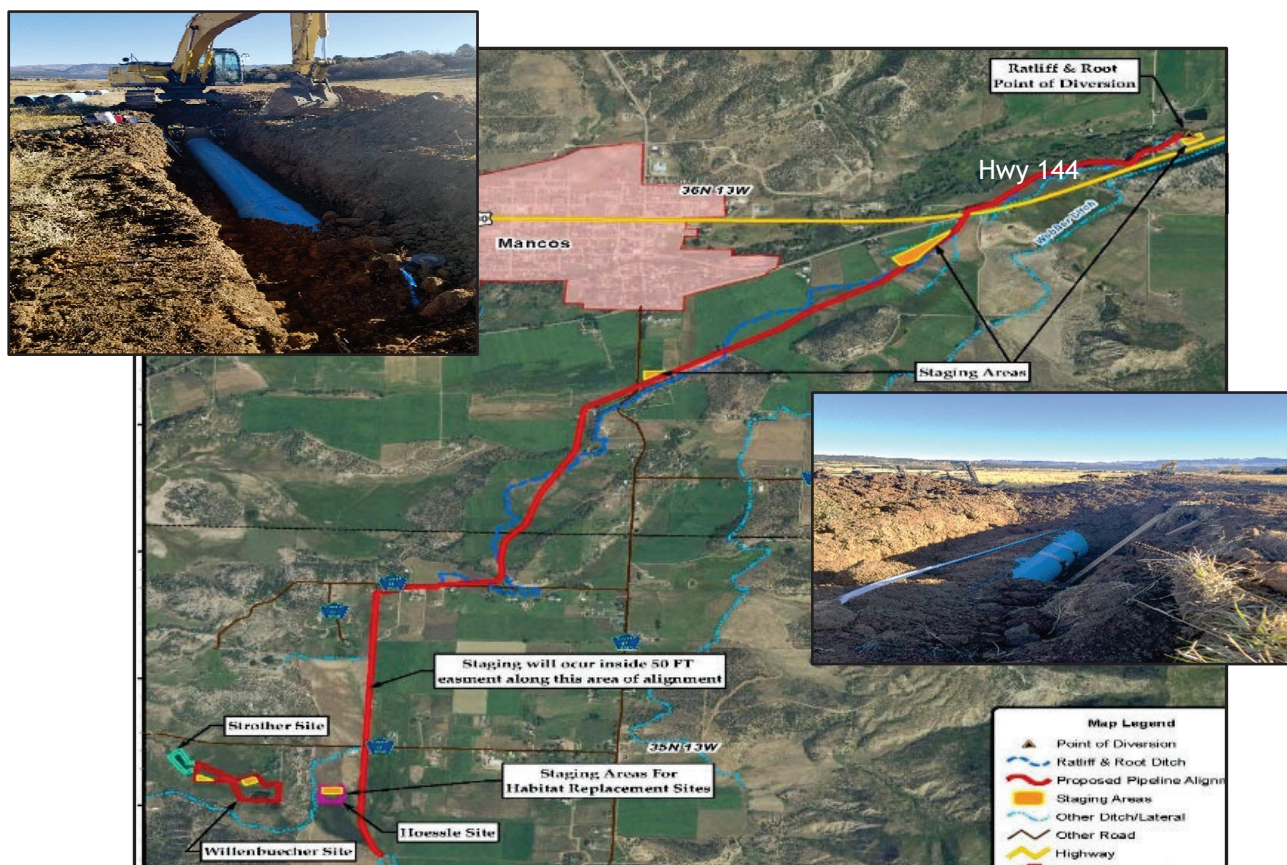
In 2022, the Company - in agreement with Ogilvy Irrigation and Land Company (OILC) purchased 20% and 80% of Loloff Reservoir (a reclaimed gravel pit with a storage capacity of 1,998 AF), respectively, for a total of \$4,800,228. OILC paid their portion outright and the Company took out a bridge loan to cover its portion of the costs - with a commitment to repay the bridge loan within one year. The Company and OILC also jointly constructed a bi-directional pipeline to connect the Ogilvy Ditch with the reservoir. Both the reservoir and the pipeline are now in active use.

P R O J E C T D A T A		
<i>Sponsor:</i> Ogilvy Augmentation Company	<i>County:</i> Weld	<i>Water Source:</i> Cache la Poudre
<i>Type of Project:</i> New Reservoir		<i>Board Approval Date:</i> January 2023
<i>Loan Terms:</i> 30yr @ 1.80% (Original) \$1,140,290.00 (Final) \$1,140,290.00		
<i>Design Engineer:</i> NOCO Engineering		
<i>Contractor:</i> Four C Sons Inc.		



Ditch Piping and Rehabilitation

Root and Ratliff Ditch Company
Substantially Complete June 1, 2024



Project Description

The Root and Ratliff Ditch Company (Company) was formed in 1947 to operate and maintain the Root and Ratliff Ditch that was originally constructed in the 1870's. The Company currently has 2,200 shares and delivers irrigation water to approximately 1,290 acres growing primarily hay and pasture grass. The Company also delivers stock water to shareholders during the non-irrigation season.

The Project included the rehabilitation of approximately 5.5 miles of unlined ditch with buried pipe. A majority of the funding for the Project came from a Bureau of Reclamation, Colorado River Basin Salinity Control Program grant for about \$3,600,000. Construction began in August of 2021 and was completed in by the summer of 2022.

P R O J E C T D A T A		
<i>Sponsor:</i> Root and Ratliff Ditch Company	<i>County:</i> Montezuma	<i>Water Source:</i> Mancos River
<i>Type of Project:</i> Ditch Piping and Rehabilitation	<i>Board Approval Date:</i> November 2021	
<i>Loan Terms:</i> 30yr @ 1.10% (Original) \$303,000.00 (Final) \$250,408.96		
<i>Design Engineer:</i> SGM Engineering		
<i>Contractor:</i> Lewis Excavation		



Kannah Creek Flowline Replacement

City of Grand Junction
Substantially Complete June 1, 2024

The City of Grand Junction replaced 3 miles of pipe that had reached the end of its useful life.



Project Description

The City of Grand Junction's (City) utility department serves a population of over 30,000 and is expected to increase to 49,000 by 69,000. Operations, expenses, and capital projects associated with the system are funded by the Water Enterprise Fund, the revenues for which include water service charges and tap fees. The City's average annual diversion from all supply sources is about 5,300 acre-feet.

The City replaced the existing Kannah Creek flowline line with a 20 inch PVC pipe. This alternative was chosen because it achieved the needs of the City and minimized costs. The pipeline conveys water from Kannah Creek watershed - a 200 square mile catchment on the west side of Grand Mesa - to Juniata Reservoir - the City's primary storage facility. Construction began in 2022 and finalized it at the end of 2023. The pipeline traverses rocky terrain, paralleling the aforementioned creek in the upstream stretch, and keeping to the original delineation two-thirds of its length with the deviation occurring in the middle third.

P R O J E C T D A T A		
<i>Sponsor:</i> City of Grand Junction	<i>County:</i> Mesa	<i>Water Source:</i> Kannah Creek
<i>Type of Project:</i> System Rehabilitation		<i>Board Approval Date:</i> May 2022
<i>Loan Terms:</i> 20yr @ 1.65% (Original) \$3,232,000.00 (Final) \$2,246,326.93		
<i>Design Engineer:</i> JVA Consulting Engineers, Inc.		
<i>Contractor:</i> M.A. Concrete Construction, Inc		



System Redundancy & Pretreatment Improvements

City of Glenwood Springs
Substantially Complete June 1, 2024



Project Description

As a result of the Grizzly Creek Fire in 2020, the City's primary source-water watersheds was significantly impacted. The City was in need of immediate funding to construct a raw water collection and transmission system improvement to ensure it could provide domestic water despite spring runoff from these burn scar areas.

This Project included the construction of a pimp line from the Roaring Fork Pump Station to the Red Mountain Water Treatment Plant. In addition, sediment removal infrastructure throughout the raw water collection and transmission system was constructed. Construction began in late 2020 and was completed in the late summer of 2023.

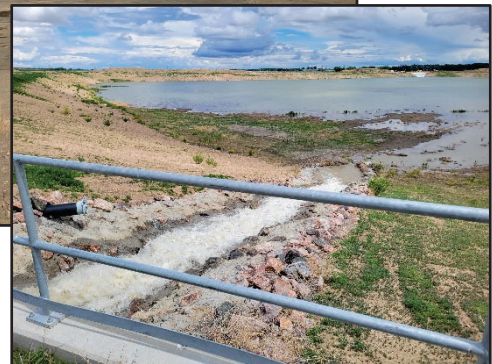
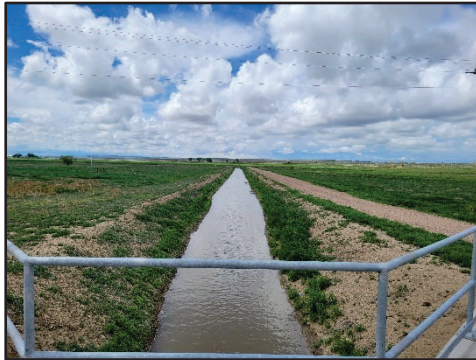
P R O J E C T D A T A		
<i>Sponsor:</i> City of Glenwood Springs	<i>County:</i> Garfield	<i>Water Source:</i> No Name Creek and others
<i>Type of Project:</i> Ditch Piping and Rehabilitation		<i>Board Approval Date:</i> November 2020
<i>Loan Terms:</i> 3yr @ 0% and 27yr @ 1.80% (Original) \$8,080,000.00 (Final) \$3,777,754.07		
<i>Design Engineer:</i> Carollo Engineering		
<i>Contractor:</i> Johnson Construction, Inc.		



COLORADO
Colorado Water
Conservation Board
Department of Natural Resources

Stonewall Springs Reservoir Complex

Triview Metropolitan District
Substantially Complete June 1, 2024



Project Description

The Triview Metropolitan District's Stonewall Springs Reservoir Complex consists of three planned reservoirs: South, Central and East Reservoirs located 10 miles east of Pueblo. This Project consisted of the construction of a diversion structure; inlet channel; spillway; remote telemetry and monitoring equipment; installation of a pump station system from the Arkansas River; a SCADA system for the diversion structure; and outlet works for the South Reservoir. The Project will support the replacement of non-renewable Denver Basin groundwater supplies with renewable surface water supplies.

The Reservoir has a 2,050 acre-foot capacity and is located 10 miles east of Pueblo. The outlet from the reservoir will discharge into the Arkansas River above the Avondale gage. Construction was completed in late 2023.

P R O J E C T D A T A		
<i>Sponsor:</i> Triview Metropolitan District	<i>County:</i> Pueblo	<i>Water Source:</i> Arkansas River
<i>Type of Project:</i> Reservoir Construction	<i>Board Approval Date:</i> January 2022	
<i>Loan Terms:</i> 30yr @ 2.05% (Original) \$5,202,510.00 (Final) \$5,202,439.65		
<i>Design Engineer:</i> Deere & Ault, Consultants Inc.		
<i>Contractor:</i> MCMS, Inc.		

PROJECTS UNDER CONTRACT

PROJECT						STATUS		
Borrower	Project Name	Basin	Contract #	Amount	Manager	Design	Construction	Update
Amity Mutual Irrigation Company	Queen Reservoir Dam Rehabilitation	Arkansas	CT2021-2224	\$2,600,000	Joshua Godwin	100%	25%	Construction began in June.
Board of Water Works of Pueblo	Southside Diversion Dam Improvement Project	Arkansas	CT2024-1240	\$9,750,000	Joshua Godwin	100%	75%	The project will update a large diversion structure on the Arkansas River. Design work is complete. Project Bidding took place in September 2023. Construction work is currently underway and expected to be complete Fall 2024.
Breckenridge, Town of	Goose Pasture Tarn Dam Rehabilitation	Colorado	CT2023-0673	\$13,000,000	Cole Bedford	100%	98%	The project has been under construction since 2020. This loan is intended to cover the costs of the second half of the project which is starting in the fall of 2022. The first draw took place in December 2022. Construction will continue into 2024.
Crawford Clipper Ditch Company	Crawford Clipper Ditch Improvements	Gunnison	CT2024-2009	\$750,000	Joshua Godwin	100%	75%	Earthwork on stabilizing pond began at the beginning of Feb. Easements for sedimentation pond were acquired. Construction is on schedule.
Dove Creek, Town of	Reservoir No. 2	Southwest	CT2022-3321	\$800,000	Joshua Godwin	80%	0%	Project is construction of a new storage reservoir for municipal supply. The Town also received an \$800,000 WPG for the project. Subsequent engineering work suggests costs will exceed current funding. The Town is pursuing additional funds. 100% design is expected to be sent to Dam Safety mid-April.
Duke Ditch Company	Piping the Duke Ditch	Gunnison	CT2017-0915	\$90,000	Matt Stearns	100%	0%	NRCS finalized the design in August 2018. Federal grant expired. Company is evaluating options of applying for a loan increase and completing project without federal grant dollars.
Florida Consolidated Ditch Company	Hess Lateral Improvement	Southwest	CT2019-2034	\$1,075,000	Kirk Russell	100%	0%	Company received a Water Smart Grant in April 2023. This \$2M will help cover the increase of construction costs since the original bid in 2020. Project will be rebid this fall.
Florida Consolidated Ditch Company	Florida Canal Diversion Replacement	Southwest	CT2021-2890	\$750,000	Matt Stearns	100%	95%	This project is the replacement of a low head dam diversion structure with multibeneficial outcomes. Construction began October 2023 and the contractor demobilized in December 2023. Contractor will return in the spring to revegetate and perform some landscaping.
Fort Morgan Farms, LLC	Delta Water Storage Phase 1	South Platte	CT2021-2222	\$8,982,000	Zach Salin	100%	75%	Site visit with Borrower 4/18/24. Intermediate storage of 750 af bypassed, project proceeding with construction of full depth reservoir. Spillway design proceeding, will be installed concurrent with mining operations. Mining expected to continue through 2029-2030.
Fort Morgan Reservoir and Irrigation Company	Augmentation Pump Replacement Project	South Platte	CT2023-3300	\$1,753,000	Cole Bedford	100%	98%	Construction is complete on new pumps and new pump house. One final pay request is expected for final punch list items and a pressure relief valve then the loan will be closed out.
Fruitland Irrigation Company	Tunnel and Canal Renovation	Gunnison	CT2019-2848	\$1,729,000	Kirk Russell	100%	80%	Company may need to request additional loan funds. Contracts have been extended.
Grand Junction, City of	Purdy Mesa Flowline Replacement	Gunnison	CT2021-2857	\$7,000,000	Joshua Godwin	100%	75%	Construction restarted in May.
Grand View Canal Irrigation Company	Grandview Canal Improvements	Gunnison	CT2024-4203	\$500,000	Joshua Godwin	90%	80%	Demolition and rebuild of diversion structure underway.
Grand View Irrigation Company	Siphon Repair Project	Arkansas	CT2023-2058	\$350,000	Joshua Godwin	100%	98%	Construction complete. Awaiting borrower to initial substantial completion process.
Groundwater Management Subdistrict of CCWCD	Hokestra Reservoir Purchase	South Platte	CT2020-3348	\$5,390,500	Zach Salin	100%	85%	Pumphouse construction completed and pump commissioned/operational. Construction of inlet/outlet structures completed.
Groundwater Management Subdistrict of CCWCD	Pioneer Reservoir	South Platte	CT2019-3687	\$8,611,000	Zach Salin	100%	90%	Contract extension completed 5/2/24. With diversion occurring, reservoir is approx 1/3 full. CCWCD installing submersible pump and completing pump building construction.
Hidden Valley Water District	Master Water Meter Connection	South Platte	CT2020-2244	\$1,720,000	Kirk Russell	100%	95%	Assets and operations are all to the District. District signed and approved EMD IGA. EMD connect 7/2020. Construction complete, final walkthru Aug2020. Continued water court proceedings by EMD.
Keensburg, Town of	Alluvial Water Rights Extension Project	South Platte	CT2024-2007	\$2,100,000	Joshua Godwin	0%	0%	Contact made with new town manager and working through process to purchase water rights.
Last Chance Ditch Company	Measurement Structure Reconstruction Project	South Platte	CT2024-3122	\$197,960	Zach Salin	100%	98%	Project is substantially complete; SC date will be August 1, 2024. ZCS performed final site walk June 19, 2024.
Lookout Mountain Water District	Upper and Lower Beaver Brook Dam Rehabilitation	South Platte	CT2021-3115	\$3,500,000	Joshua Godwin	100%	95%	Substantial completion expect first half of 2024. Received contract extension. Received likely last PR. Army Corp has accepted the district's solution to the pH issues.

PROJECTS UNDER CONTRACT

PROJECT						STATUS		
Borrower	Project Name	Basin	Contract #	Amount	Manager	Design	Construction	Update
Montezuma Valley Irrigation Company	Beaver Creek Ditch Repairs	Southwest	CT2024-3135	\$1,400,000	Joshua Godwin	100%	98%	Construction complete. Watching to make sure reseeding takes. Waiting for a full irrigation season before closing out loan.
North Poudre Irrigation Company	Park Creek Expansion Project	South Platte	CT2023-2593	\$6,480,000	Zach Salin	60%	5%	Construction expected to begin by mid-July 2024. NPIC on July Board meeting agenda for loan increase and Projects Bill inclusion.
Ogilvy Irrigating and Land Company	Seely Reservoir Dredging	South Platte	CT2019-2099	\$2,252,000	Joshua Godwin	100%	97%	Construction effectively complete. Finalizing contract amendment for loan increase.
Orchard City Irrigation District	Fruitgrowers Reservoir Gates Replacement	Gunnison	CT2024-3098	\$500,000	Joshua Godwin	100%	100%	Construction complete. Final site visit complete. Waiting for borrower to request official substantial completion.
Platte Valley Irrigation Company	Platte Valley Reservoir No. 1	South Platte	CT2024-2005	\$4,500,000	Zach Salin	80%	0%	Final design submitted for Dam Safety review. Concerns about easement access raised by borrower. Waiting for follow up.
Redmesa Reservoir and Ditch Company	Redmesa Reservoir Rehabilitation Engineering	Southwest	CT2022-0498	\$183,000	Matt Stearns	60%	0%	This project is to engineer a financially feasible dam rehabilitation, including a potential enlargement. Work began on March 8, 2021. The Company has secured a local governmental sponzor and has been approved to proceed in the NRCS PL-566 program which will cover 100% of design and 75% of construction.
Rio Grande Water Conservation District Subdistrict No. 5	Saguache Pipeline	Rio Grande	CT2021-3846	\$6,020,000	Zach Salin	100%	50%	Borrower getting well owner agreement and Project easement agreements in palce.
Smith and Emmons Ditch Company	Diversion Structures Replacement Project	South Platte	CT2023-2473	\$410,000	Zach Salin	100%	10%	Most recent PR utilizes both Loan only. Project still in design phase, plans to solicit bids late summer/early fall. Construction anticipated during non-irrigation season (Oct/Nov 2024 – Mar/Apr 2025)
Special Improvement District No. 3 of the RGWCD	Alpha Hay Farms Augmentation	Rio Grande	CT2023-2843	\$2,555,000	Zach Salin	100%	0%	Pay Requests for the initial land purchase was approved in April 2023. Met with Angelo Bellah and others at RGWCD. No pressing issues at present.
Special Improvement District No. 4 of the Rio Grande WCD	Peachwood Farms Augmentation & Sustainability	Rio Grande	CT2023-3361	\$3,456,000	Zach Salin	100%	50%	Pay Requests for the initial land purchase was approved in April 2023. Met with Angelo Bellah and others at RGWCD. No issues at present.
Trinchera Conservancy District Groundwater Management Subdistrict	Augmentation Pipeline	Rio Grande	CT2022-3040	\$977,000	Kirk Russell	100%	99%	Project is complete. Substantial completioin TBD.
Tunnel Water Company	West Half Laramie-Poudre Tunnel Rehabilitation	North Platte/South Platte	CT2019-3706	\$18,730,000	Kirk Russell	100%	98%	Construction was completed in spring of 2022 after delays due to Cameron Peak wildfire. After the '22 irrigation season, warrenty review found tunnel lining caved in. Repair was made winter of 22/23. Discussion re cost incese responsibility. Loan increased by Board March '24
Twin Lakes Reservoir and Canal Company	Grizzly Reservoir Rehabilitation	Colorado	CT2024-2006	\$9,833,000	Joshua Godwin	95%	0%	Construction expected to begin mid-July.
Uncompahgre Valley Water Users Association	Taylor Park Hydro Powerplant Project	Gunnison	CT2023-2565	\$1,685,000	Kirk Russell	100%	95%	This project will construction a hydropower plant at the toe of Taylor Reservoir Dam. Preliminary materials purchase and design work is complete. Construction is nearly complete.
Victor, City of	Victor Reservoir No. 2 Dam Rehabilitation	Arkansas	CT2021-3873	\$510,000	Kirk Russell	100%	99%	Town removed portion of outlet tower and DWR/Dam Safety issued a fill restriction. Project is complete. City determining amount of cash funds they will use. CWCB may deauthorize in Nov 2024.
Wiggins, Town of	Wiggins Recharge Facility at Glassey Farms	South Platte	CT2018-0892	\$2,385,000	Kirk Russell	100%	0%	The purpose of this project is to develop an augmentation water source for the Town. In August 2017 the Town purchased Glassey Farms and its associated water rights and 52% of funds were disbursed at that time. The project is back underway and an extension was granted.
Windy Gap Farming Project Water Activity Enterprise	Windy Gap Project (Chimney Hollow Reservoir)	South Platte	CT2021-2039	\$154,108,911	Zach Salin	100%	60%	PB Loan increse approved and in-place. First PR expected July 2024. Will coordinate amounts with Mimi & Treasury.
Grand Valley Water Users Assocation	Vinlands Power Plant	Colorado	CT2022-2084	\$1,066,000	Matt Stearns	100%	98%	This project will replace the existing 2.75 MW hydroelectric powerplant with a new 4.5 MW facility. Contractor mobilized November of 2021, and construction of the power generation facility completed in November 2022. The powerplant is producing power (up to 3.2 MW as of July 2023) via a temporary interconnect with Xcel Energy, and will be fully operational in May 2024 via a permanent interconnect.
Orchard Mesa Irrigation District			CT2022-2057	\$1,066,000				
Cottonwood Water and Sanitation District			CT2015-0105	\$1,674,000				
Binney Connection Pipeline of Water Infrastructure and Supply Efficiency project will increase WISE flow capacity to 30MGD and provide infrastructure from								

PROJECTS UNDER CONTRACT

PROJECT						STATUS		
Borrower	Project Name	Basin	Contract #	Amount	Manager	Design	Construction	Update
39 Inverness Water and Sanitation District	WISE - Phase 2 Infrastructure	South Platte	CT2015-0119	\$2,105,000	Kirk Russell	100%	90%	Aurora Binney Facility to SMWSA. Pumps/Treatment-Glacier, Pipeline/Infrastructure-T.Lowell, Jacobs is Engineer. Vault excavation began 9/2020. Construction trailer onsite through project duration. Glacier complete foundation work, pump cans have been delivered and installed, pump motors have arrived at the pump manufacture, preliminary SCADA meetings begun, Glacier starting to form rebar for the flow control building, start laying pipe. Precast concrete walls for pump station complete.
Pinery (Denver SE Water and Sanitation District)			CT2015-0086	\$1,413,130				
Cottonwood Water and Sanitation District	WISE - Denver International Airport Connection	South Platte	CT2015-0104	\$363,600	Kirk Russell	98%	60%	Annual disbursement to be made on this loan through 2021.Design Status indicates percent of funds disbursed to date. WISE WDA negotiations between parties continue with the goal of having an amended Water Delivery Agreement ready to be brought to the respective Boards and Council for review and approval by April 1, 2021. Group discussion continues focused on the DIA Connection.
40 Inverness Water and Sanitation District			CT2015-0120	\$450,000				
Parker Water and Sanitation District			CT2015-0110	\$1,089,000				

TOTAL UNDER CONTRACT \$295,860,101

APPROVED PROJECTS - NOT CONTRACTED

PROJECT						STATUS		
Borrower	Project Name	Basin	Contract #	Amount	Manager	Design	Construction	Update
1 Southeastern Colorado Water Conservancy District	Arkansas Valley Conduit	Arkansas	CT2024-XXXX	\$90,000,000	Kirk Russell	0%	0%	Federal Funding will control the scheduled use of these funds
2 Logan Irrigation District	Prewitt Reservoir Rehabilitation	South Platte	CT2023-XXXX	\$1,831,000	Kirk Russell	0%	0%	This Project is currently on hold. Related work on the Prewitt Dam was completed in the fall of 2022 and dredging work may go forward in the fall of 2023.
3 Colorado City Metropolitan District	Lake Beckwith Dam Modifications	Arkansas	CT2024-XXXX	\$3,333,000	Joshua Godwin	0%	0%	
4 Northern Colorado Water Conservancy District - Northern Integrated Supply Project Water Activity Enterprise	Northern Integrated Supply Project	South Platte	CT2024-XXXX	\$101,000,000	Zach Salin	15%	0%	2024 Projects Bill
5 Trinchera Groundwater Management Subdistrict	Water Rights Purchase	Rio Grande	CT2024-XXXX	\$2,300,000	Joshua Godwin	100%	0%	

NOT UNDER CONTRACT SUB TOTAL \$198,464,000

GRAND TOTAL \$494,324,101

WATER PROJECT CONSTRUCTION LOAN PROGRAM
LOAN REPAYMENT DELINQUENCY REPORT
LOAN FINANCIAL ACTIVITY REPORT
June 2024

LOAN REPAYMENT DELINQUENCY

Loan repayments received relative to the Water Project Construction Loan Program have been reviewed for the period covering July 2023 through June 2024 to date of report. The effective due date of the payment is inclusive of the Board's current 60 day late policy. Hence, the date the payment was received was compared to the last day allowable prior to the payment being considered late.

Repayments due for Fiscal Year 2024 total 315. Two Rivers is currently delinquent and is in foreclosure. All other payments are current.

LOAN FINANCIAL ACTIVITY

Loan financial activity relative to the Water Project Construction Loan Program for Fiscal Year 2024 is summarized as follows:

Funds received relative to loans in repayment totaled \$34.7M for this year.

Funds disbursed relative to new project loans totaled \$29.6M for this year.

Net activity resulted in \$5.1M received by the CWCB Construction Fund and the Severance Tax Perpetual Base Fund (STPBF) over the total disbursed.

Further breakdown is summarized as follows:

The Construction Fund portion consists of \$15.7M in receipts and \$5.4M in disbursements for a total net activity of \$10.3M received over disbursed.

The STPBF consists of \$19.0M in receipts and \$24.2M in disbursements for a total net activity of \$5.2M disbursed over received.

CONSTRUCTION FUND

Period	Principal	Interest	Total Received	Disbursements	Net Activity
July 2023	\$ 465,287	\$ 266,231	\$ 731,518	\$ -	\$ 731,518
August 2023	\$ 334,830	\$ 245,660	\$ 580,490	\$ 424,515	\$ 155,975
September 2023	\$ 1,504,037	\$ 1,064,945	\$ 2,568,981	\$ 74,424	\$ 2,494,557
October 2023	\$ 430,797	\$ 254,046	\$ 684,843	\$ 1,259,623	\$ (574,780)
November 2023	\$ 281,375	\$ 100,316	\$ 381,691	\$ 230,595	\$ 151,097
December 2023	\$ 1,640,029	\$ 1,242,210	\$ 2,882,239	\$ 520,382	\$ 2,361,857
January 2024	\$ 340,702	\$ 694,972	\$ 1,035,675	\$ 66,233	\$ 969,441
February 2024	\$ 1,148,057	\$ 684,747	\$ 1,832,804	\$ 22,175	\$ 1,810,629
March 2024	\$ 527,506	\$ 295,895	\$ 823,401	\$ 333,212	\$ 490,188
April 2024	\$ 870,366	\$ 404,196	\$ 1,274,562	\$ 10,305	\$ 1,264,257
May 2024	\$ 1,724,138	\$ 451,543	\$ 2,175,681	\$ 993,403	\$ 1,182,278
June 2024	\$ 413,434	\$ 272,658	\$ 686,091	\$ 1,496,236	\$ (810,145)
FY 2024 Totals	\$ 9,680,557	\$ 5,977,419	\$ 15,657,976	\$ 5,431,103	\$ 10,226,873

SEVERANCE TAX TRUST FUND PERPETUAL BASE ACCOUNT

Period	Principal	Interest	Total Received	Disbursements	Net Activity
July 2023	\$ 129,659	\$ 85,540	\$ 215,199	\$ 97,653	\$ 117,547
August 2023	\$ 1,272,582	\$ 1,008,689	\$ 2,281,271	\$ 284,533	\$ 1,996,739
September 2023	\$ 4,178,352	\$ 939,983	\$ 5,118,335	\$ 225,715	\$ 4,892,620
October 2023	\$ 1,558,589	\$ 1,554,513	\$ 3,113,102	\$ 1,699,570	\$ 1,413,532
November 2023	\$ 307,016	\$ 183,794	\$ 490,810	\$ 1,907,139	\$ (1,416,329)
December 2023	\$ 569,308	\$ 397,621	\$ 966,929	\$ 696,689	\$ 270,240
January 2024	\$ 1,915,270	\$ 488,459	\$ 2,403,730	\$ 4,422,370	\$ (2,018,640)
February 2024	\$ 432,389	\$ 195,670	\$ 628,059	\$ 1,442,341	\$ (814,282)
March 2024	\$ 293,917	\$ 197,652	\$ 491,569	\$ 850,845	\$ (359,276)
April 2024	\$ 368,917	\$ 169,766	\$ 538,683	\$ 8,644,540	\$ (8,105,857)
May 2024	\$ 2,034,910	\$ 444,584	\$ 2,479,494	\$ 2,564,056	\$ (84,562)
June 2024	\$ 164,694	\$ 131,091	\$ 295,785	\$ 1,366,491	\$ (1,070,706)
FY 2024 Totals	\$ 13,225,604	\$ 5,797,363	\$ 19,022,966	\$ 24,201,941	\$ (5,178,974)

GRAND TOTAL	\$ 22,906,161	\$ 11,774,782	\$ 34,680,942	\$ 29,633,044	\$ 5,047,899
--------------------	----------------------	----------------------	----------------------	----------------------	---------------------