



United States Department of Agriculture

Colorado Snow Surveys

Water Conditions Monitoring Committee Meeting

May 21st, 2024

NRCS Snow Survey and Water Supply Forecasting
Program

Brian Domonkos

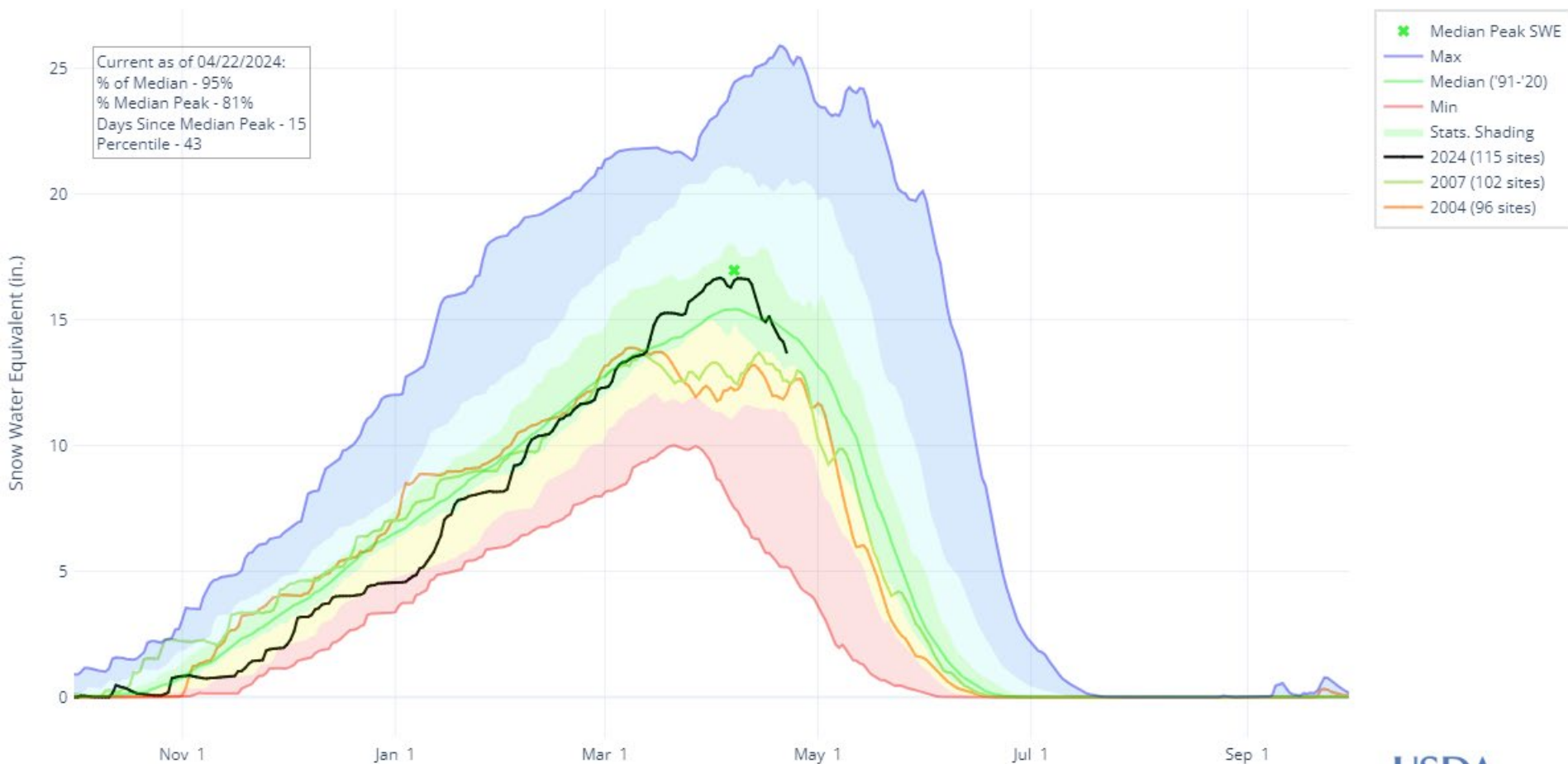
Hydrologist

Brian.Domonkos@usda.gov

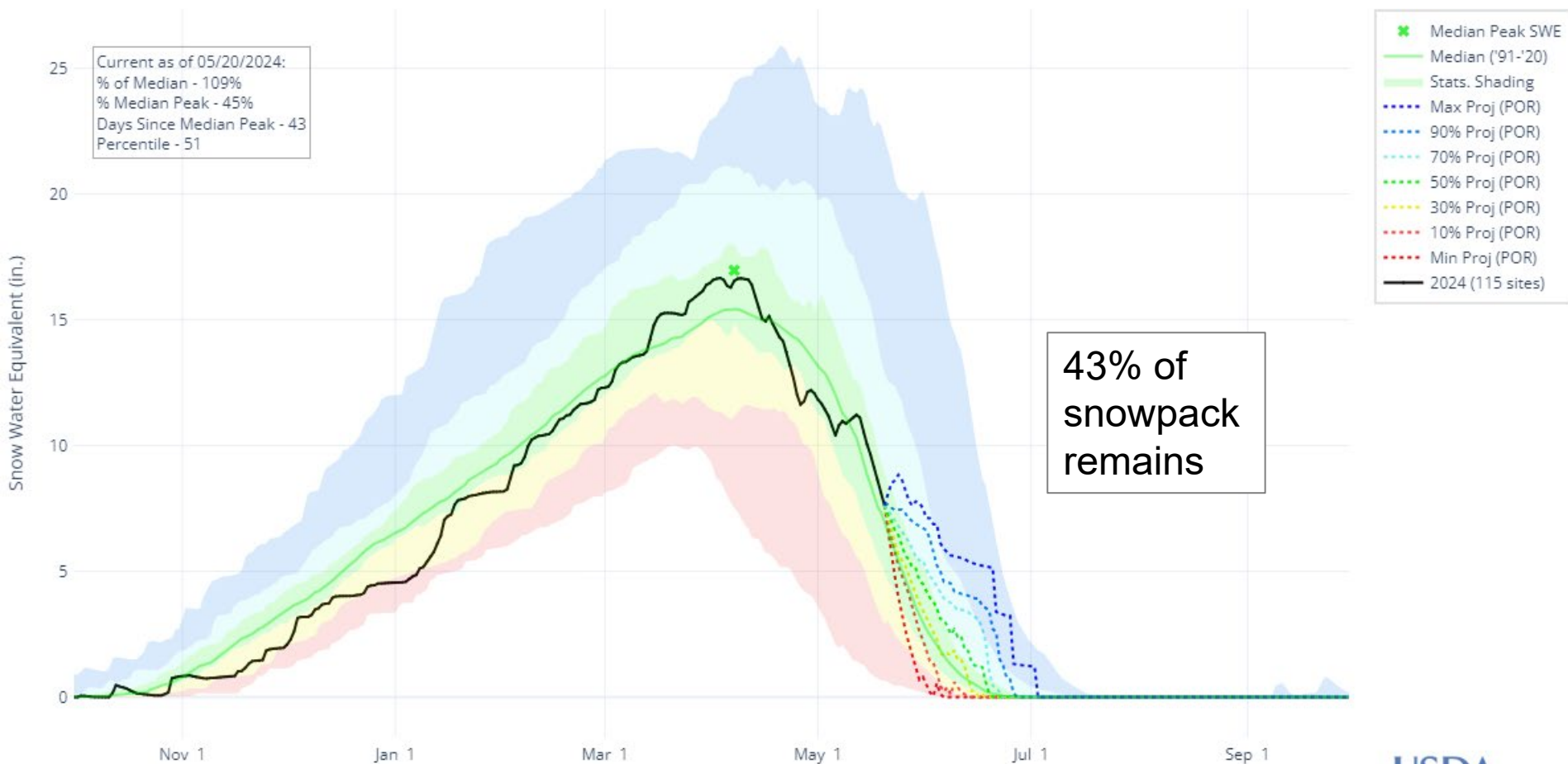
720-544-2853

<http://www.nrcs.usda.gov/wps/portal/nrcs/main/co/snow/>

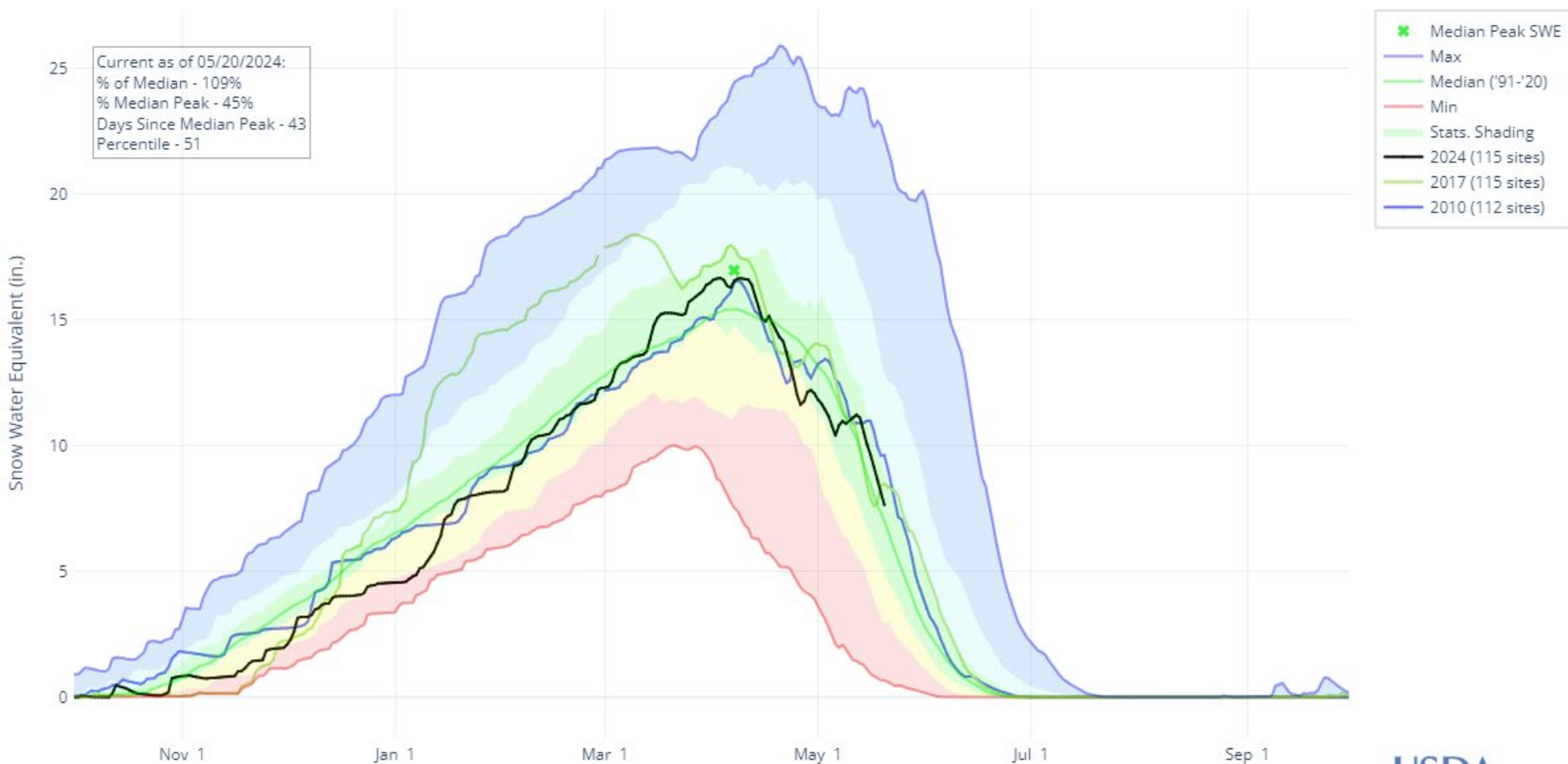
SNOW WATER EQUIVALENT IN STATE OF COLORADO



SNOW WATER EQUIVALENT PROJECTION IN STATE OF COLORADO



SNOW WATER EQUIVALENT IN STATE OF COLORADO



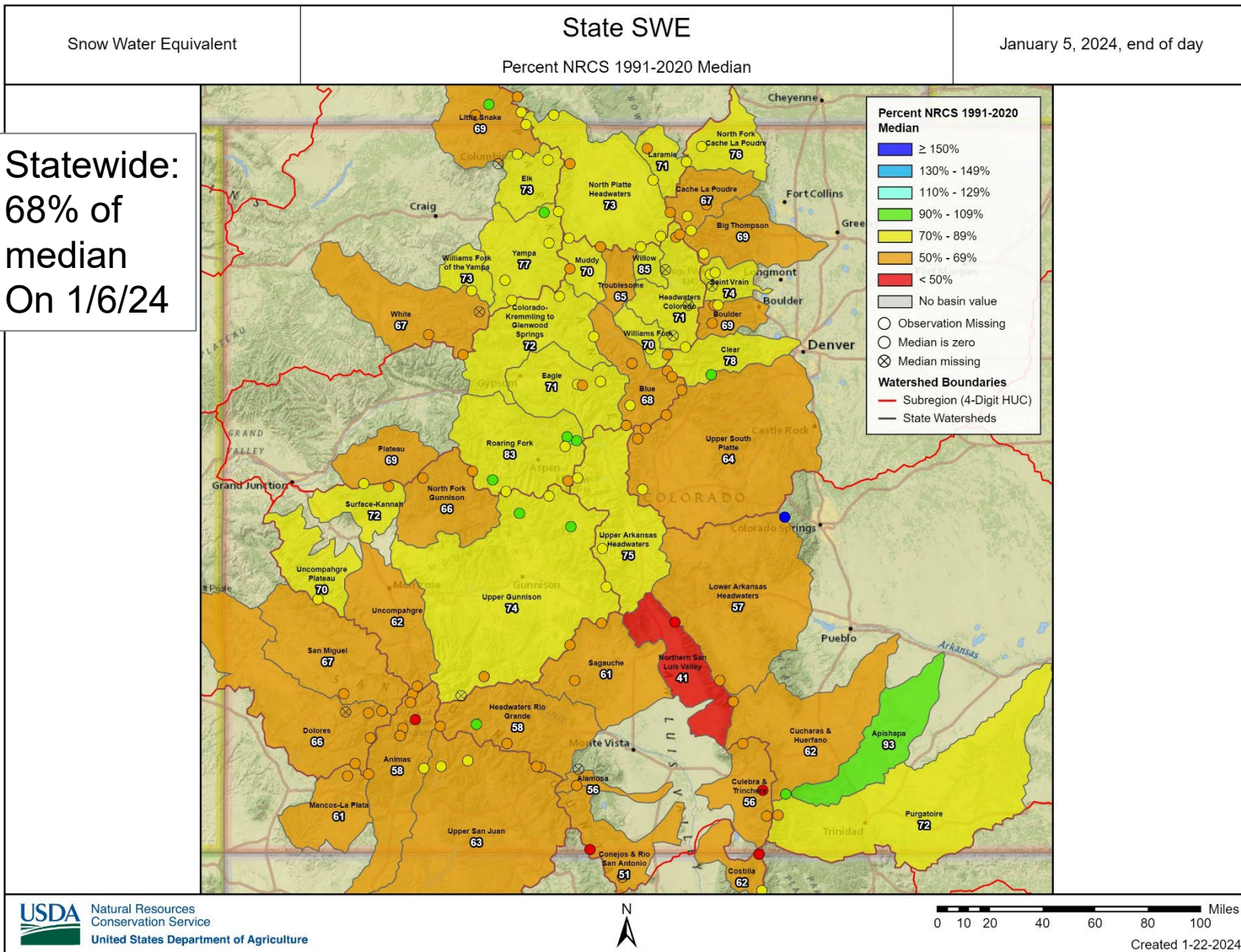


United States Department of Agriculture

Colorado Snow Surveys

Snowpack

Statewide:
68% of
median
On 1/6/24



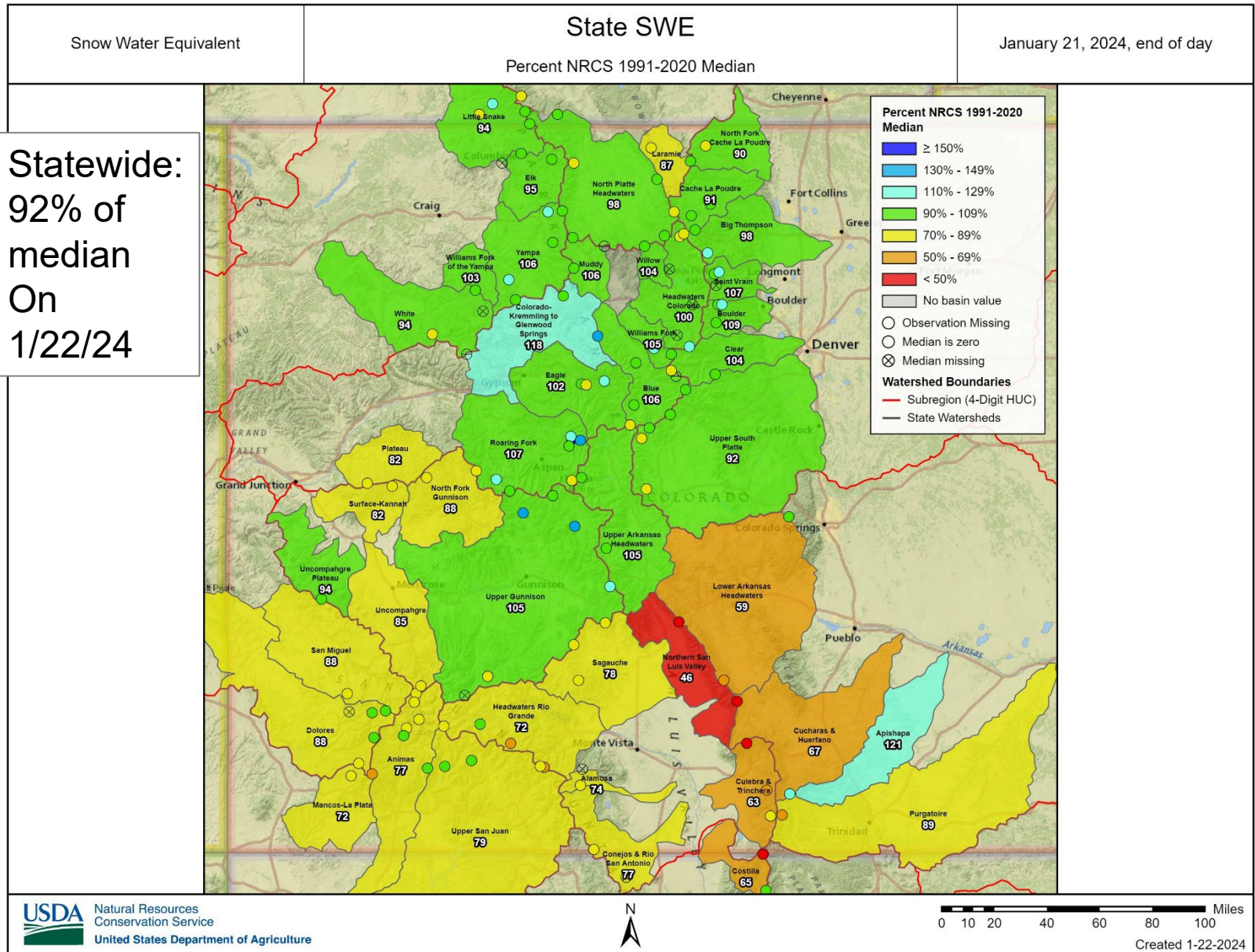


United States Department of Agriculture

Colorado Snow Surveys

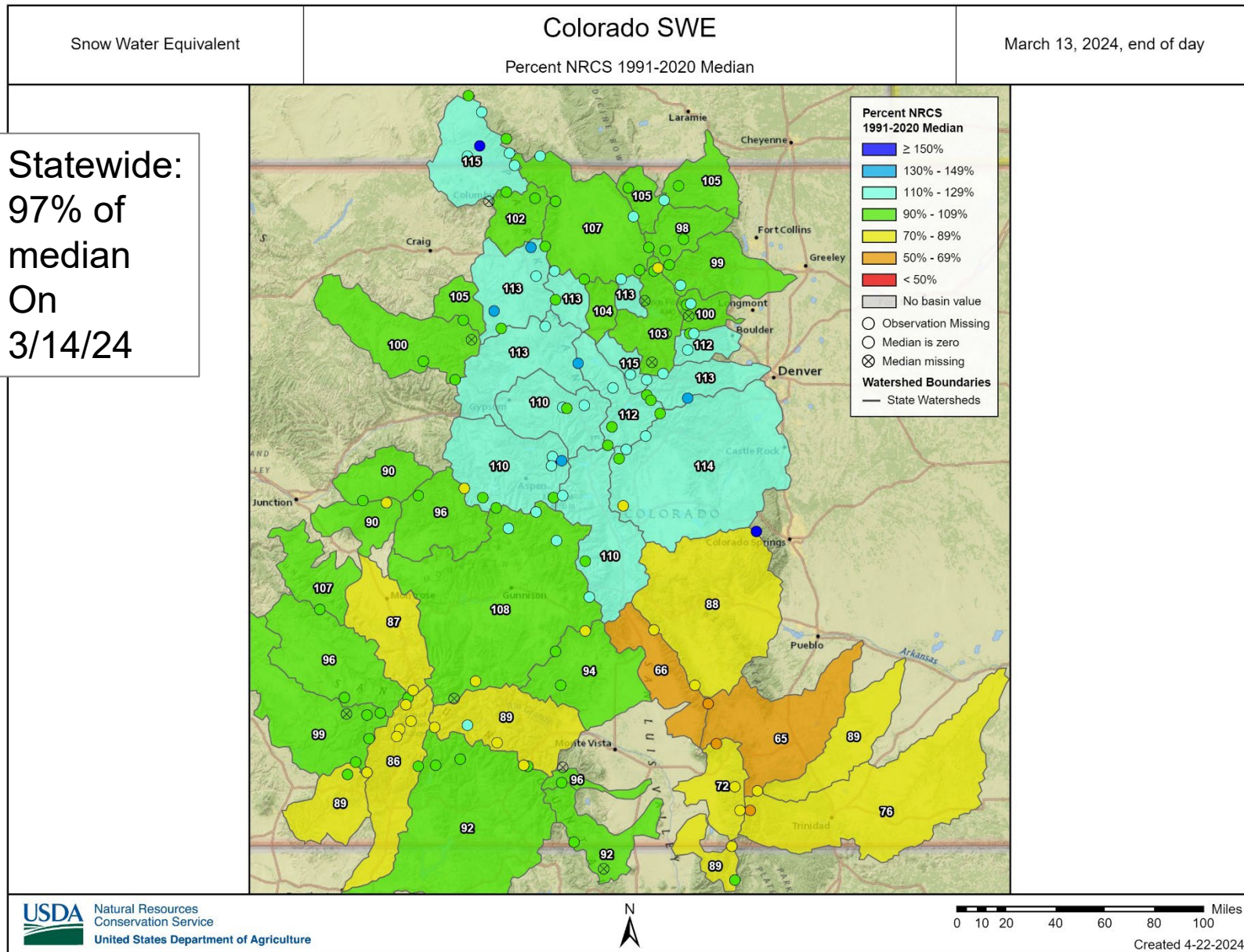
Snowpack

Statewide:
92% of
median
On
1/22/24





Colorado Snow Surveys





United States Department of Agriculture

Colorado Snow Surveys

Snowpack

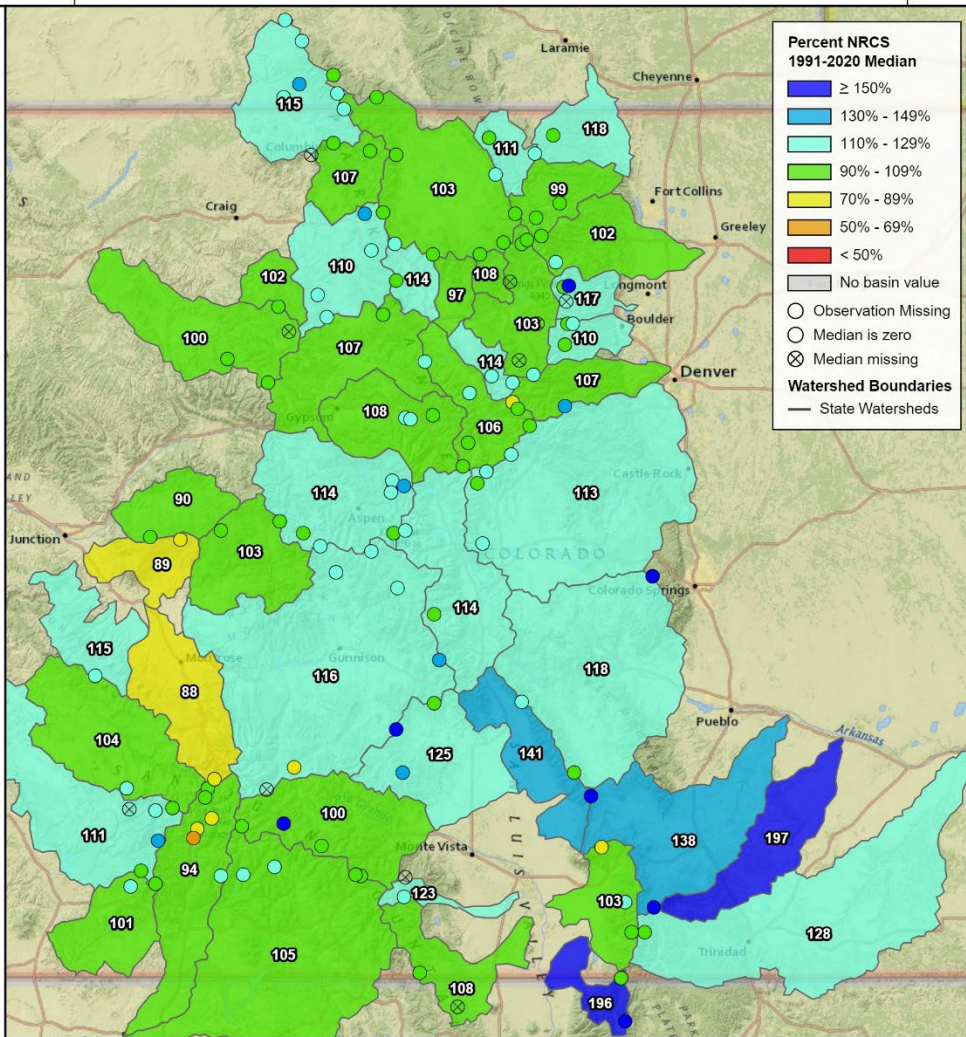
Snow Water Equivalent

Colorado SWE

April 3, 2024, end of day

Percent NRCS 1991-2020 Median

Statewide:
107% of
median
On 4/4/24



Natural Resources
Conservation Service
United States Department of Agriculture



0 10 20 40 60 80 100 Miles

Created 4-22-2024

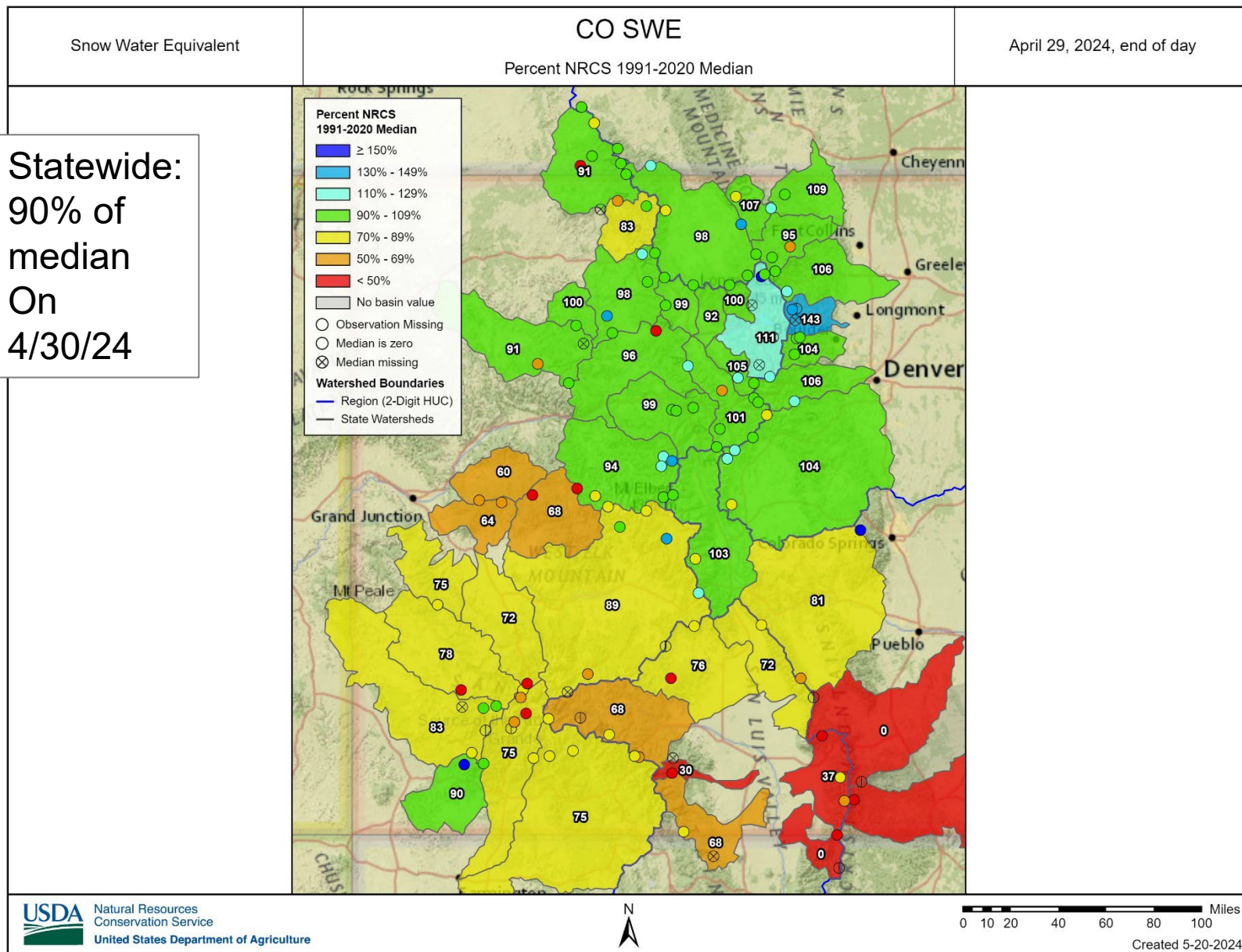


United States Department of Agriculture

Colorado Snow Surveys

Snowpack

Statewide:
90% of
median
On
4/30/24



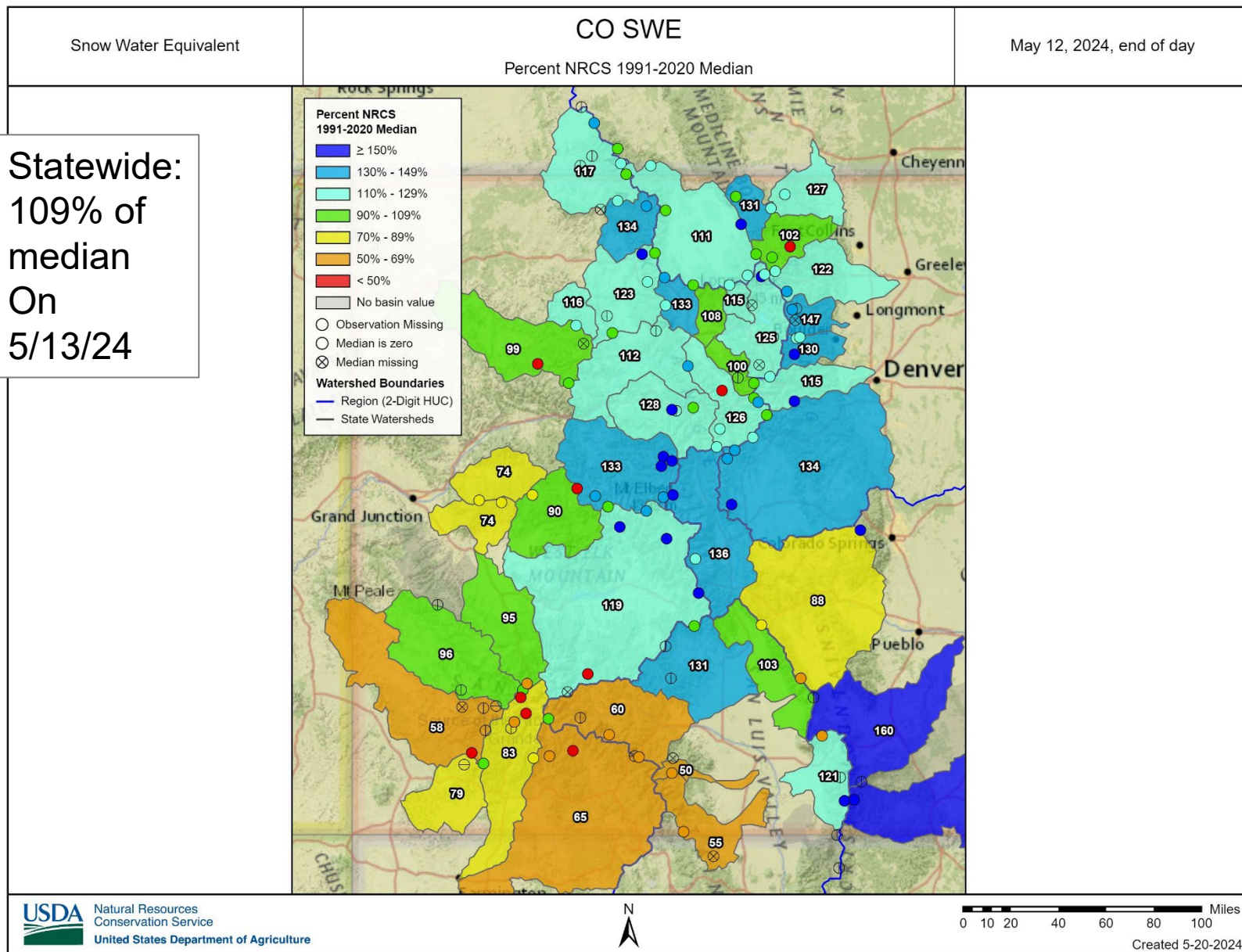


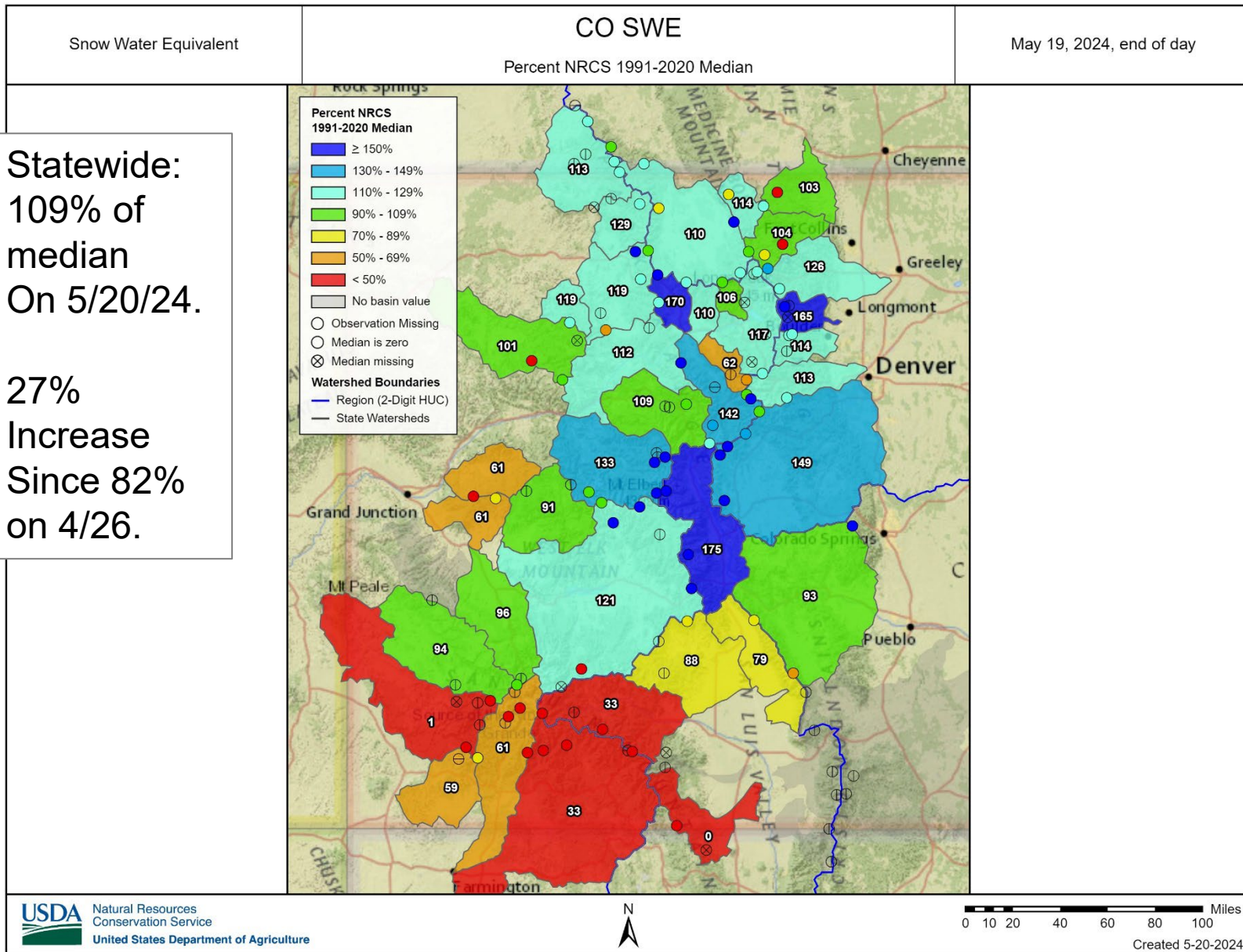
United States Department of Agriculture

Colorado Snow Surveys

Snowpack

Statewide:
109% of
median
On
5/13/24





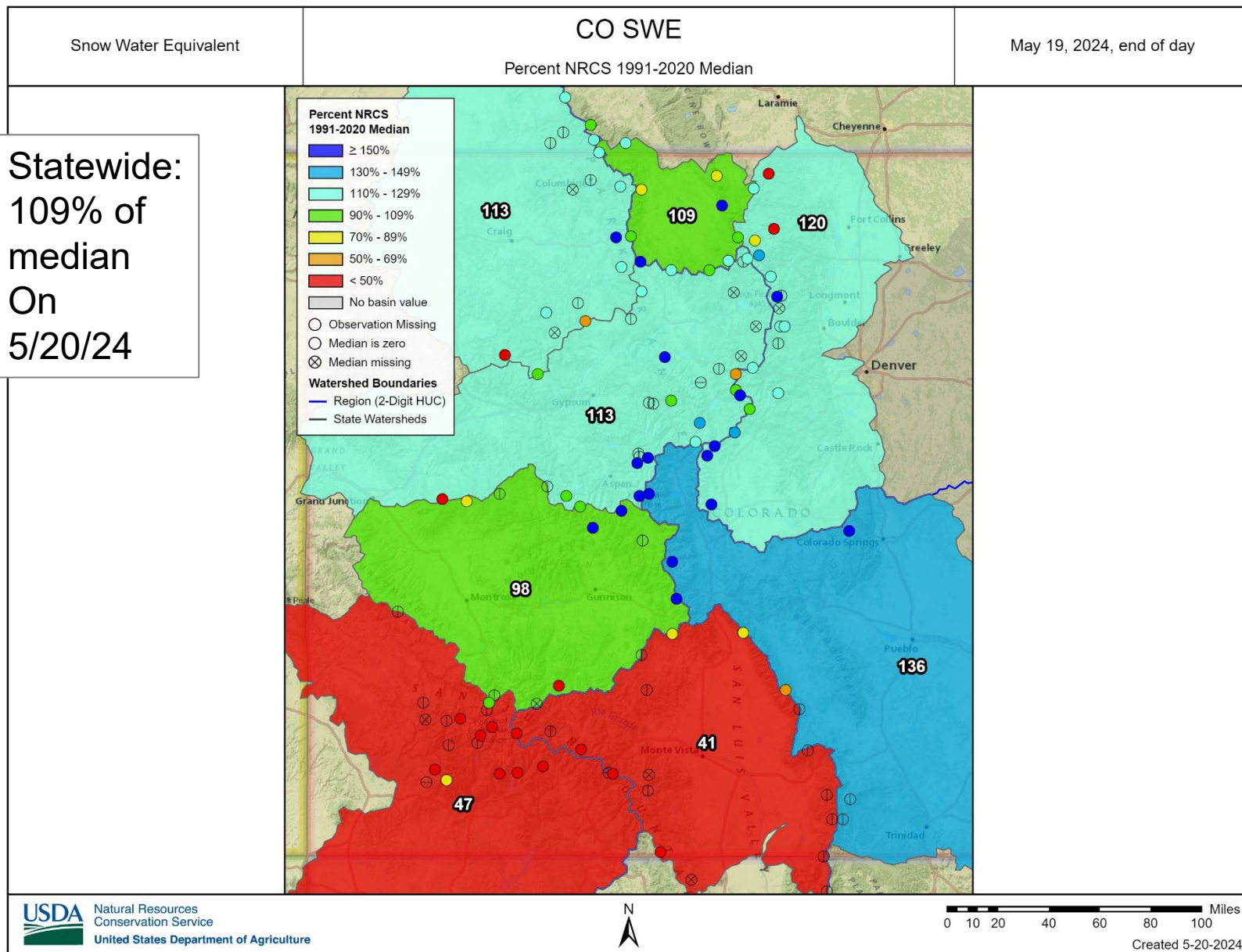


United States Department of Agriculture

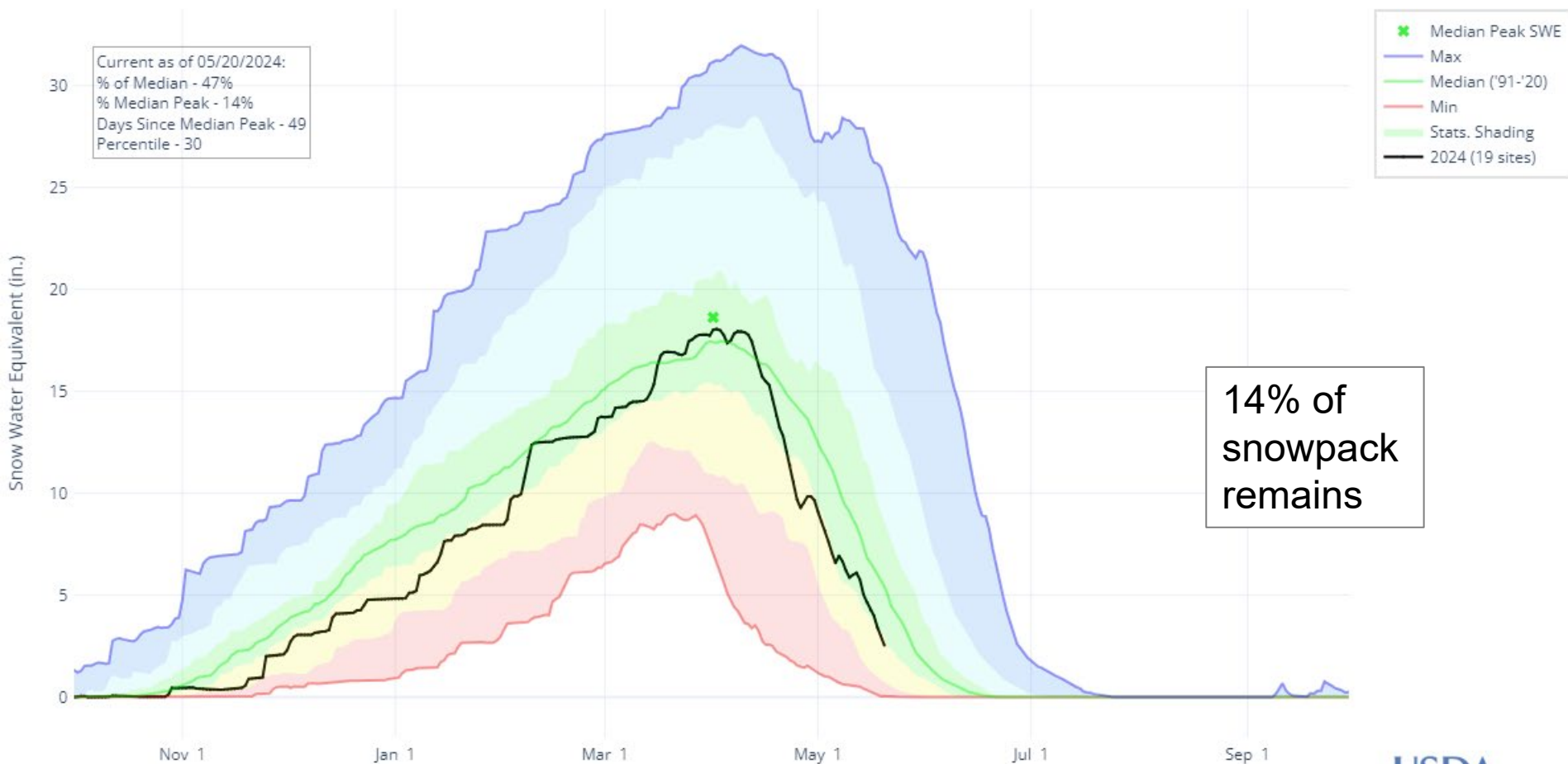
Colorado Snow Surveys

Snowpack

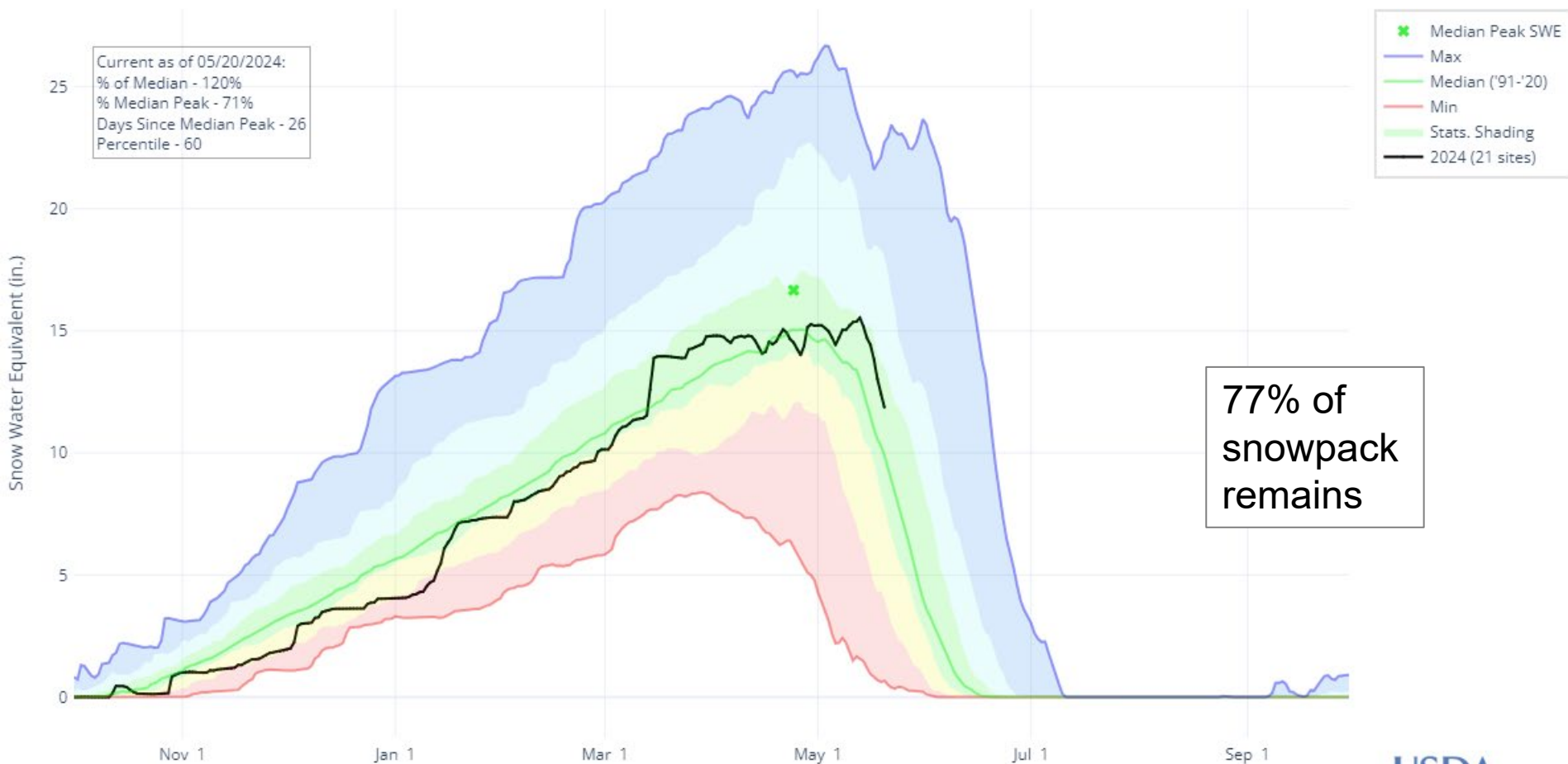
Statewide:
109% of
median
On
5/20/24



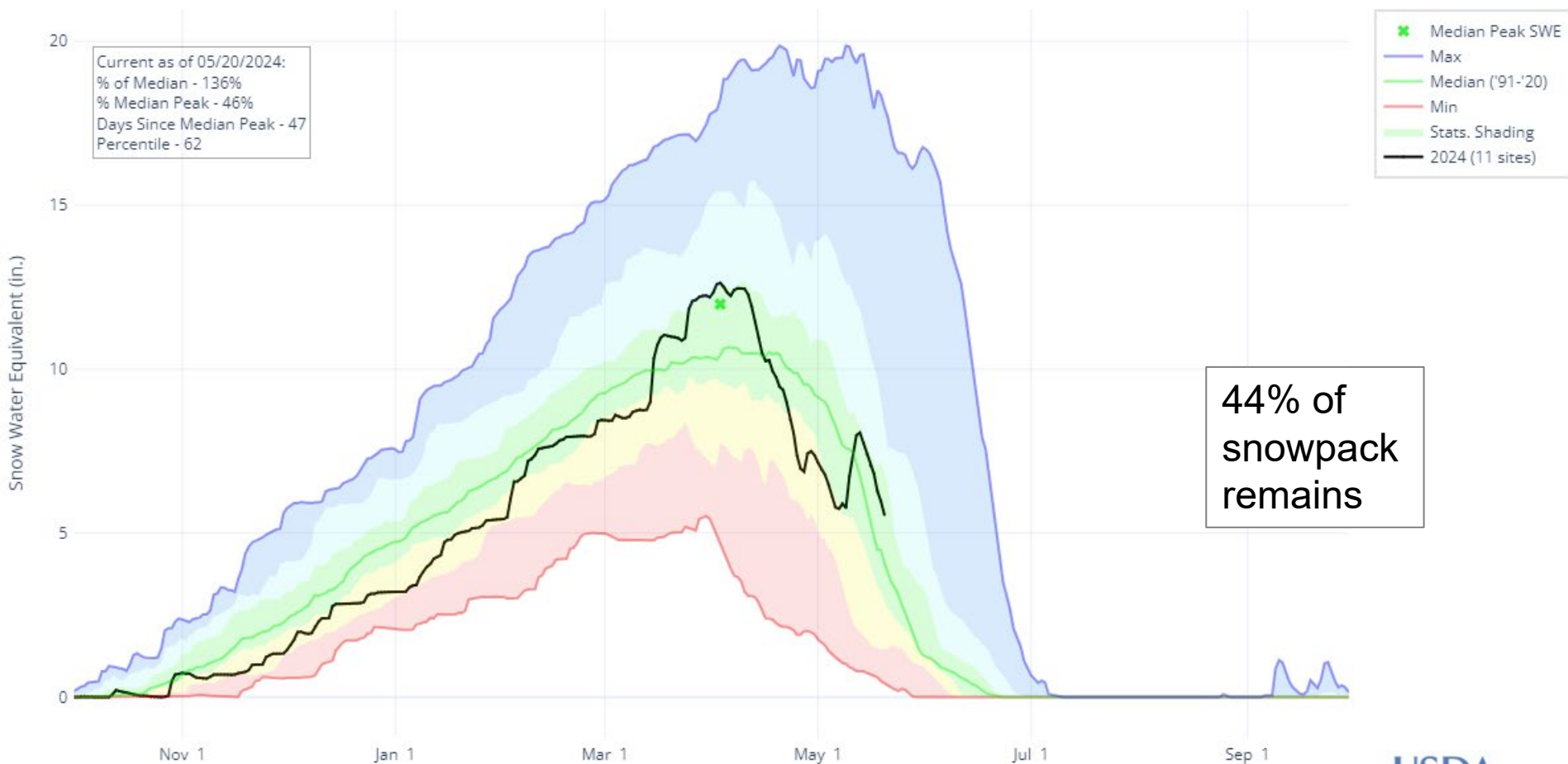
SNOW WATER EQUIVALENT IN SAN MIGUEL-DOLORES-ANIMAS-SAN JUAN



SNOW WATER EQUIVALENT IN SOUTH PLATTE



SNOW WATER EQUIVALENT IN ARKANSAS



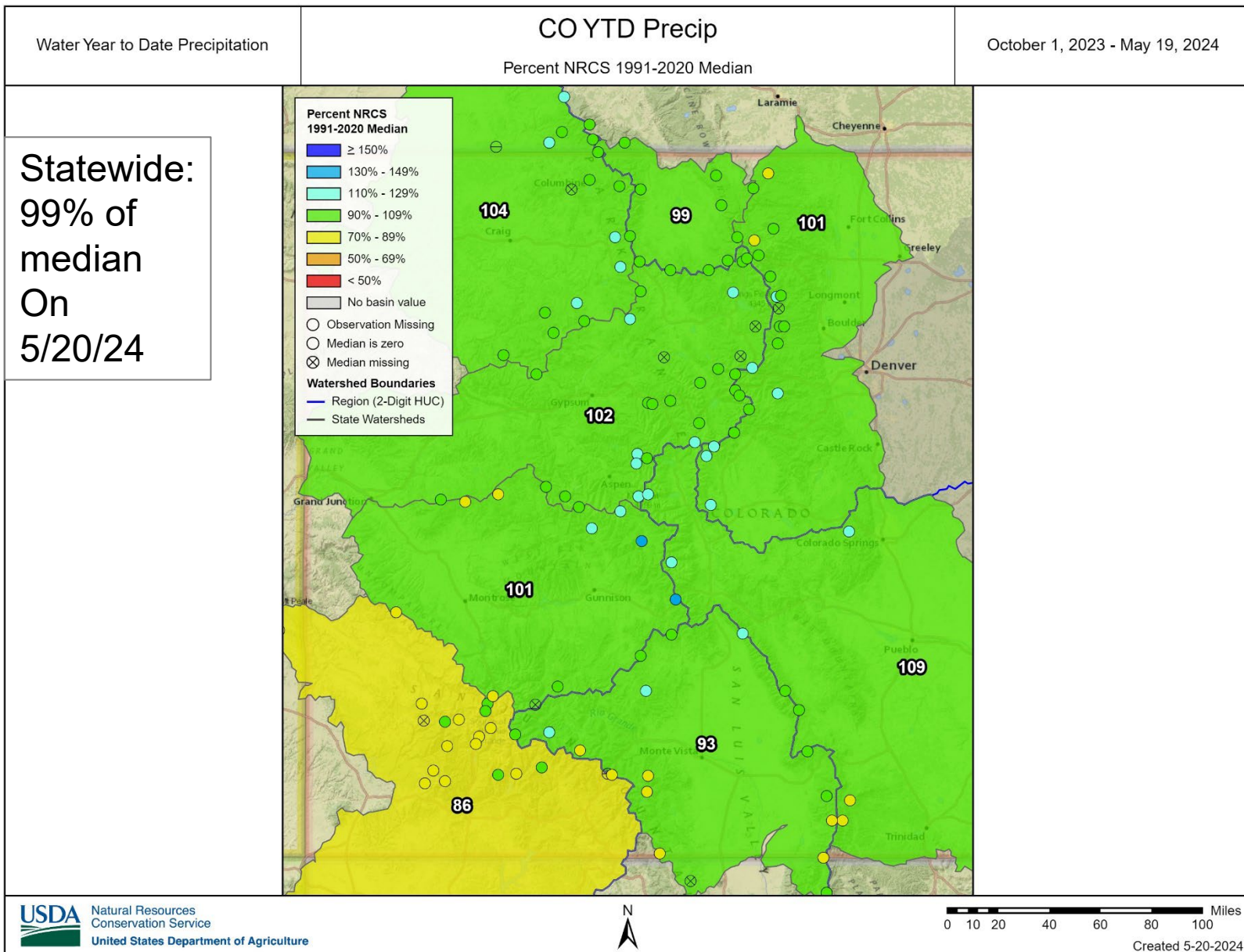


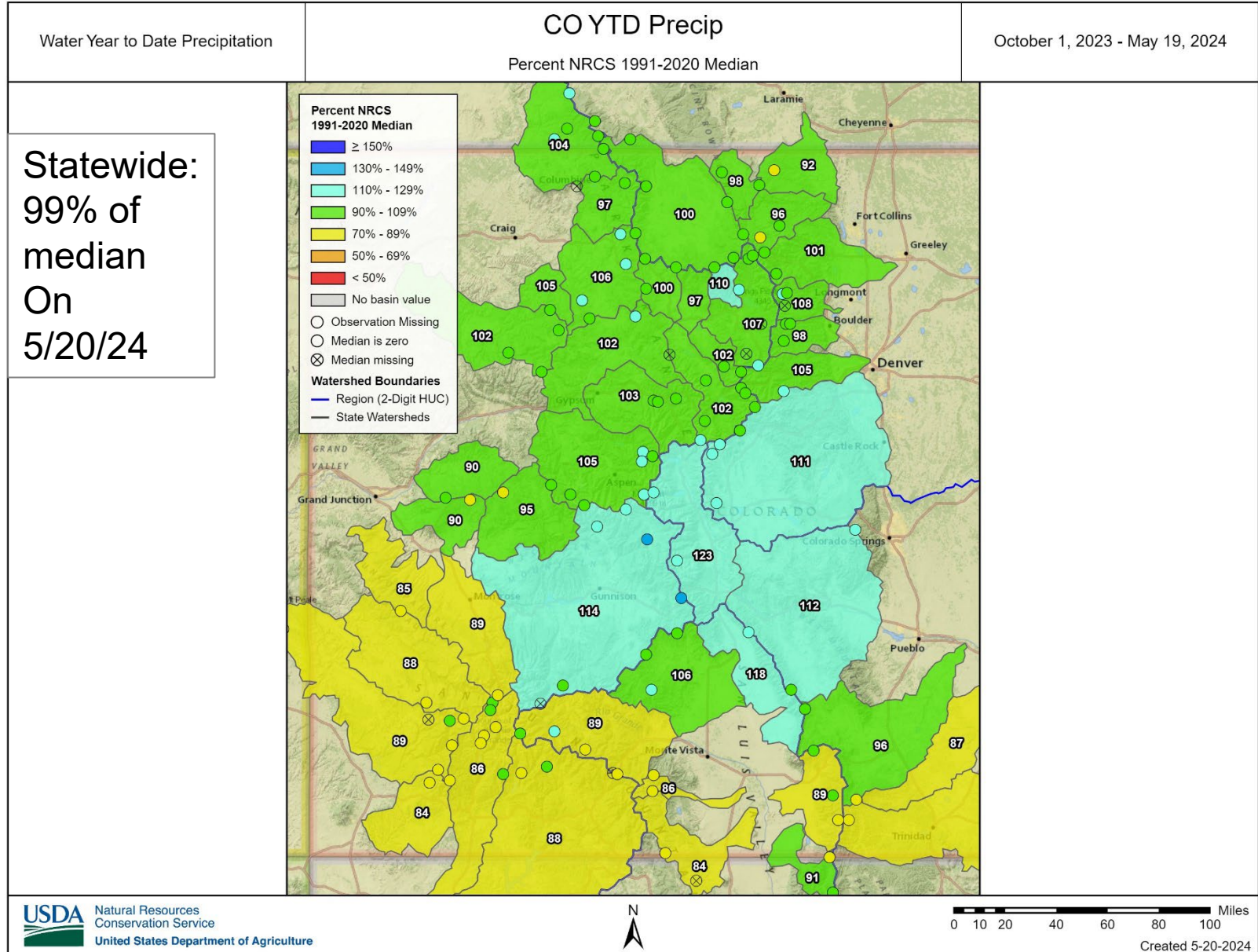
Colorado Snow Surveys

Basin	Normal Peak Date	Normal Peak SWE	Peak Date	Peak SWE	% of Norm Peak SWE	% of Norm SWE 5/20
SMDASJ	4/1	18.6	4/2	18.1	97%	47%
URG	4/2	14.5	4/3	12.9	89%	41%
Arkansas	4/3	12.0	4/3	12.6	105%	136%
Yampa-White-LS	4/7	21.3	4/6	22.0	103%	119%
Gunnison	4/8	17.9	4/10	16.3	91%	98%
Colorado Headwaters	4/12	17.5	4/11	17.1	98%	117%
NP-Laramie	4/21	24.7	4/18*	23.7*	96%	109%
S. Platte	4/24	16.7	5/13	15.5	93%	120%
Statewide	4/7	17.0	4/3	16.7	98%	109%
* = a second (lesser) peak occurred on 5/11 at 23.6 inches of SWE						

WY Precipitation

Statewide:
99% of
median
On
5/20/24



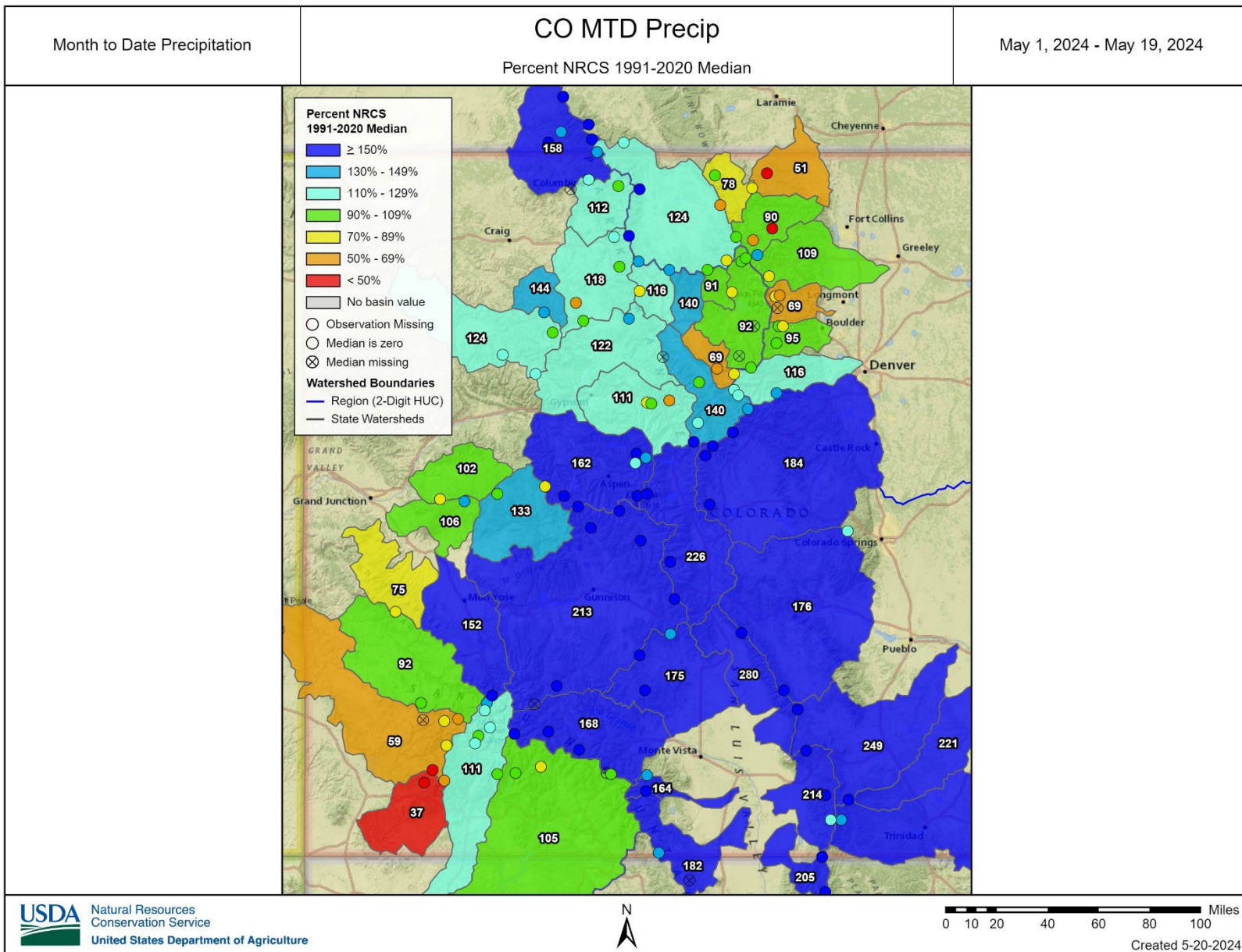




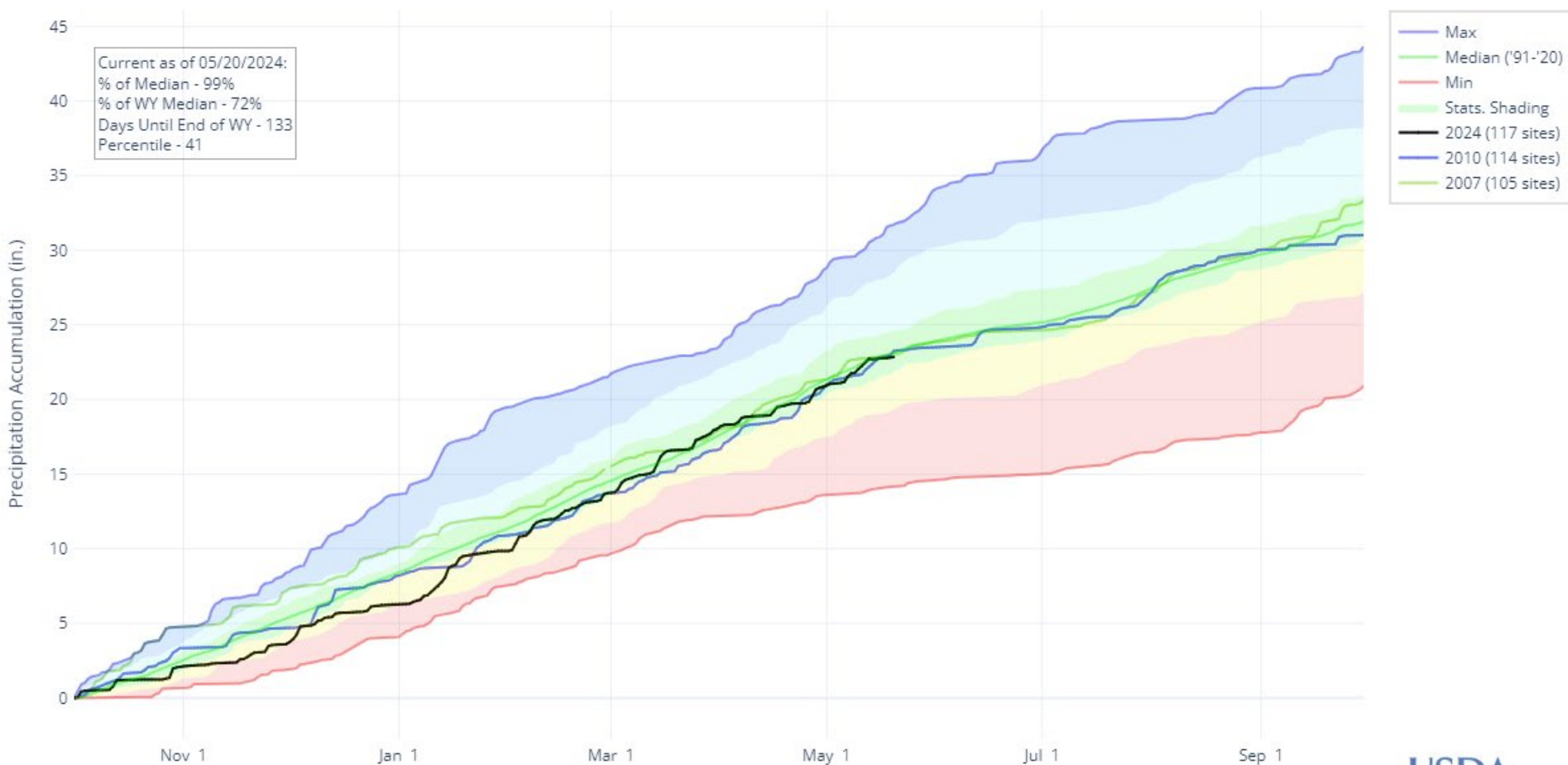
United States Department of Agriculture

Colorado Snow Surveys

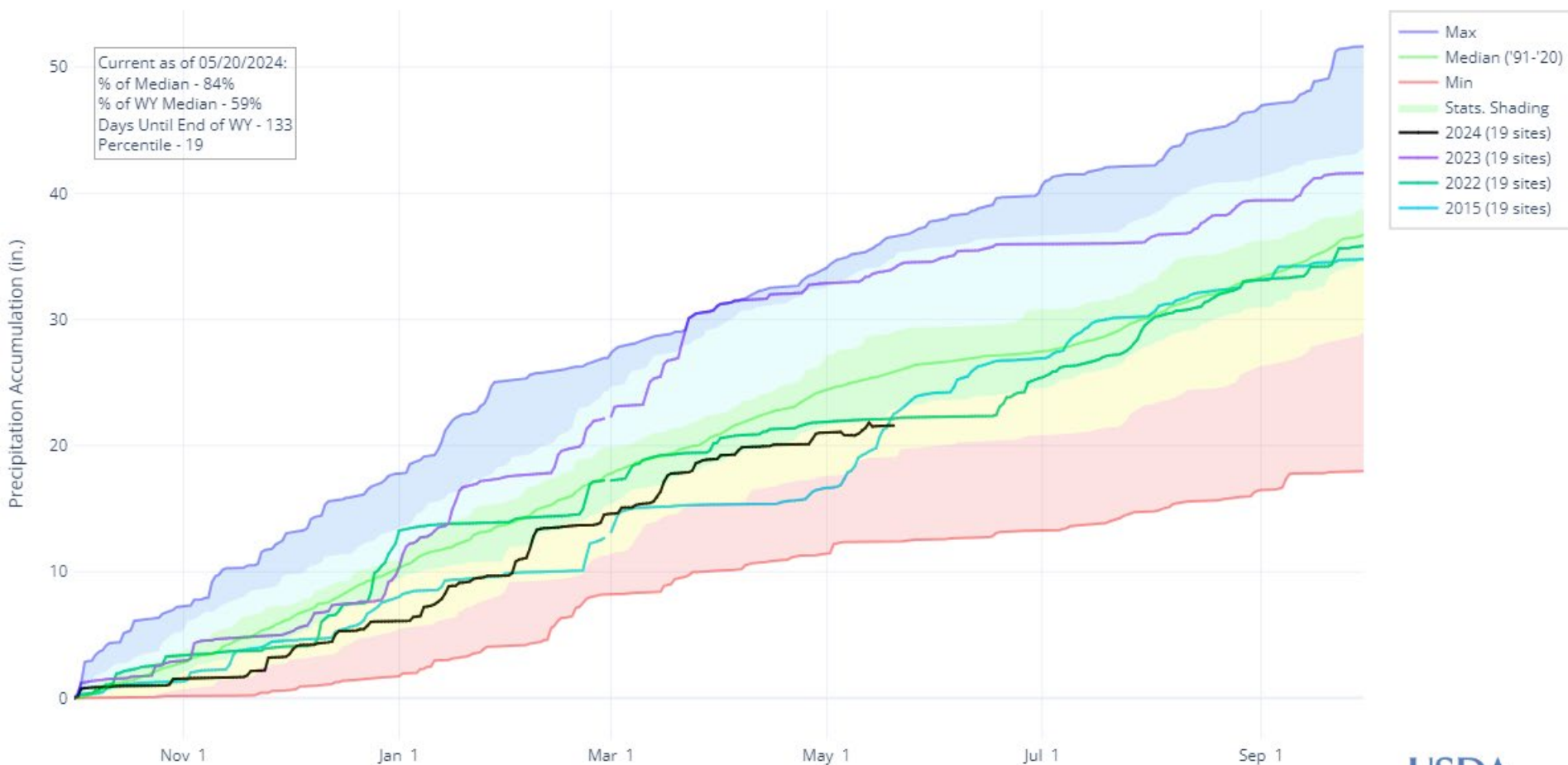
MTD Precipitation



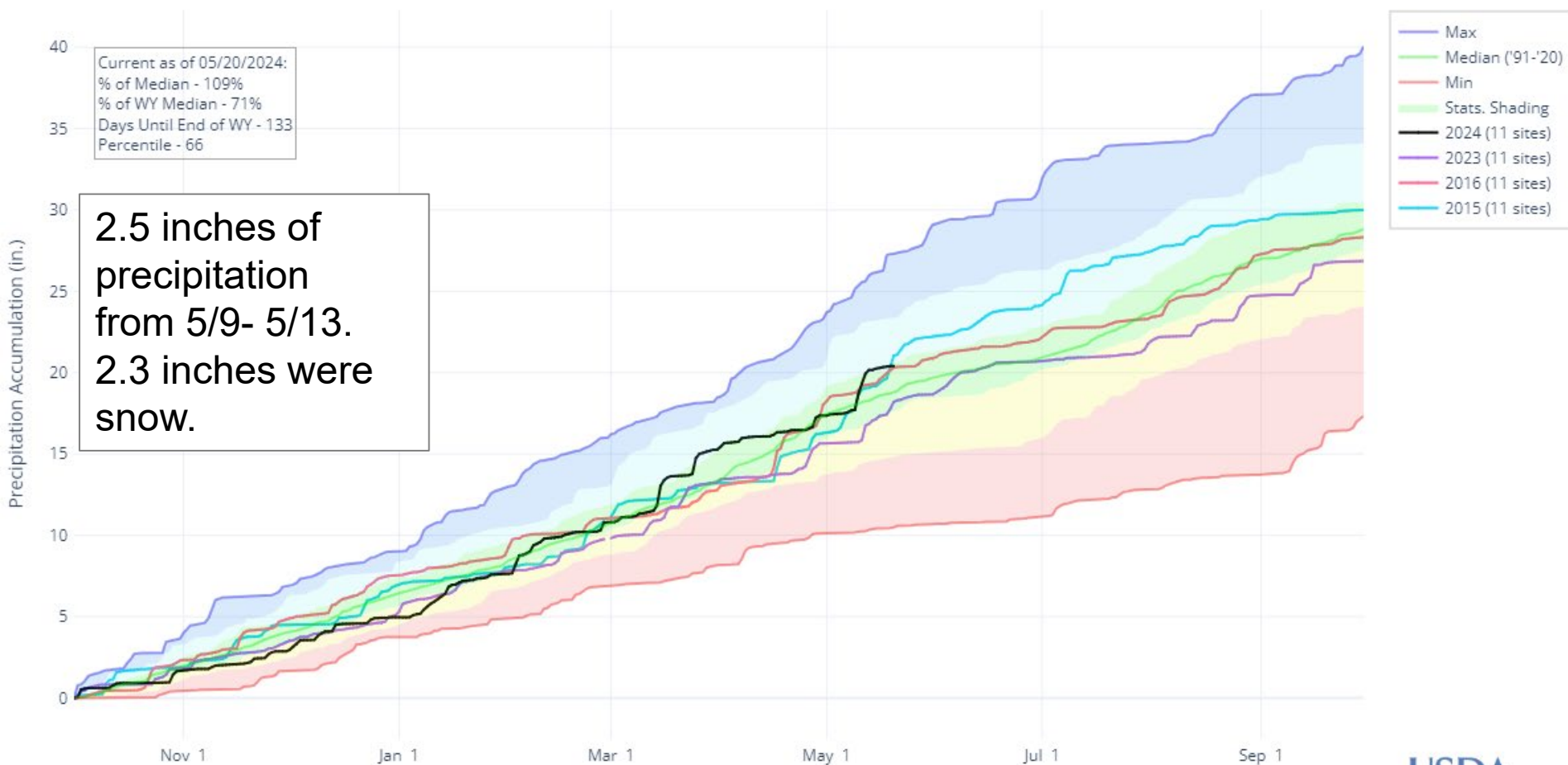
PRECIPITATION ACCUMULATION IN STATE OF COLORADO

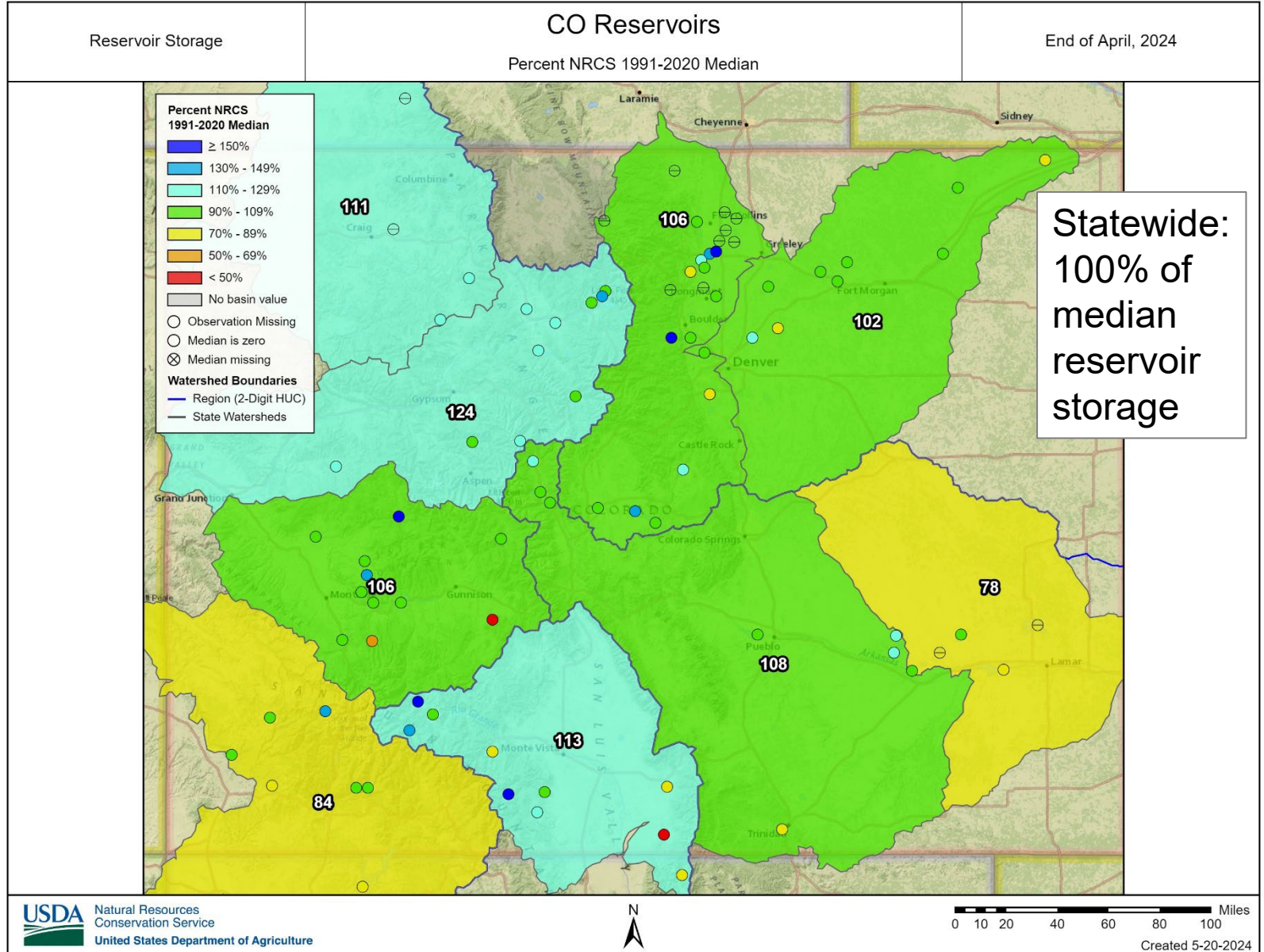


PRECIPITATION ACCUMULATION IN SAN MIGUEL-DOLORES-ANIMAS-SAN JUAN

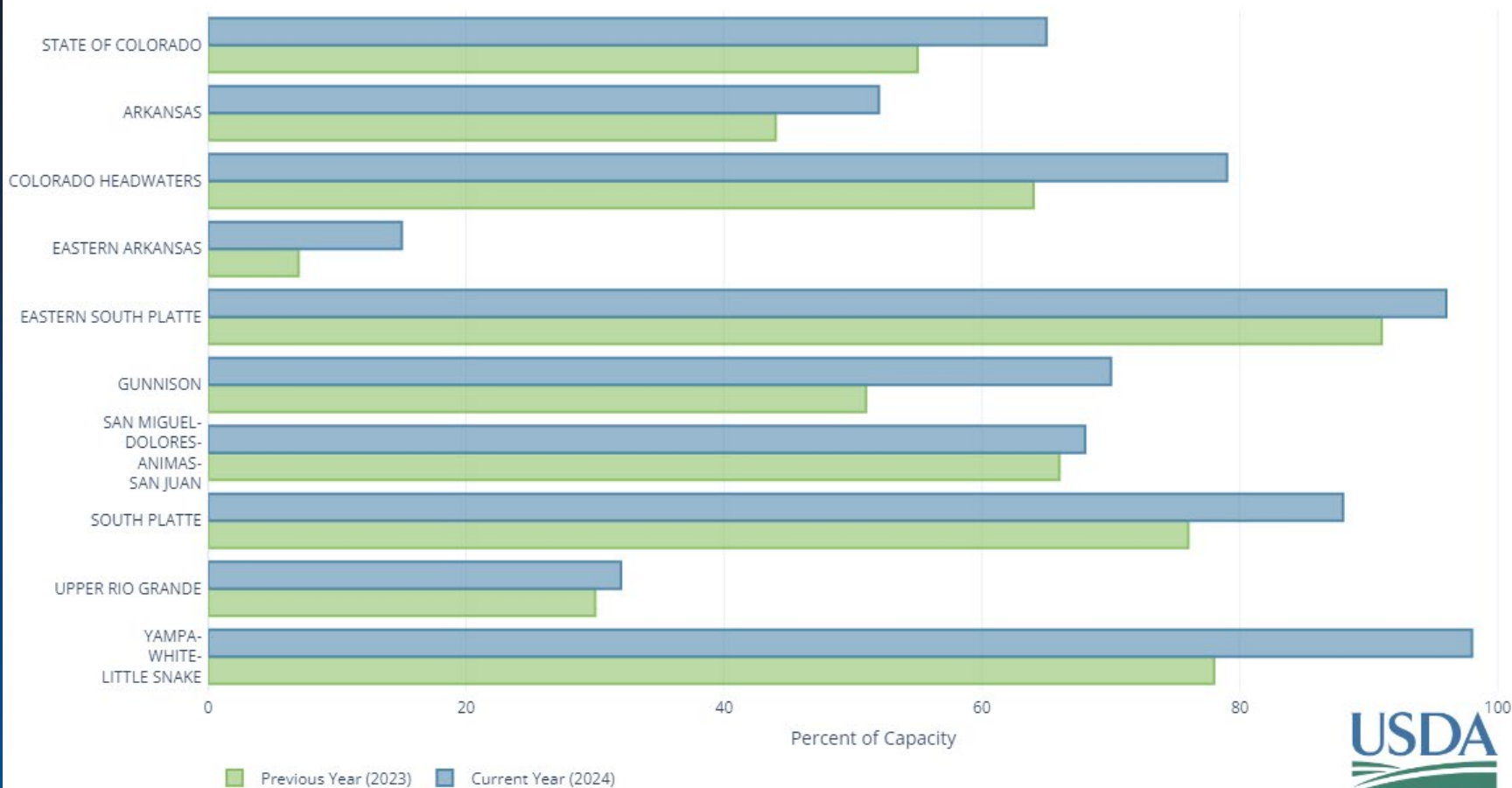


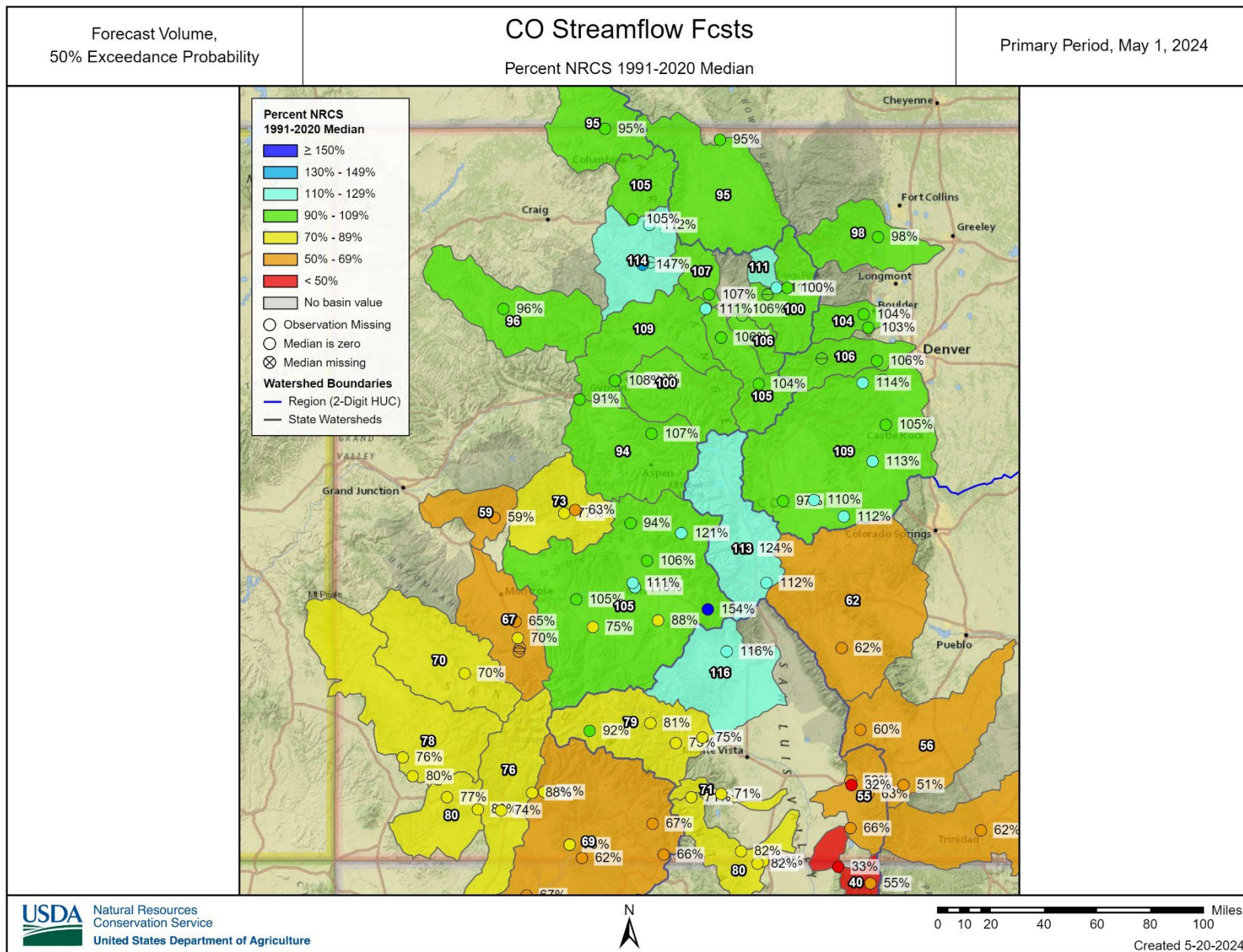
PRECIPITATION ACCUMULATION IN ARKANSAS





RESERVOIR STORAGE IN COLORADO
END OF APRIL 2024



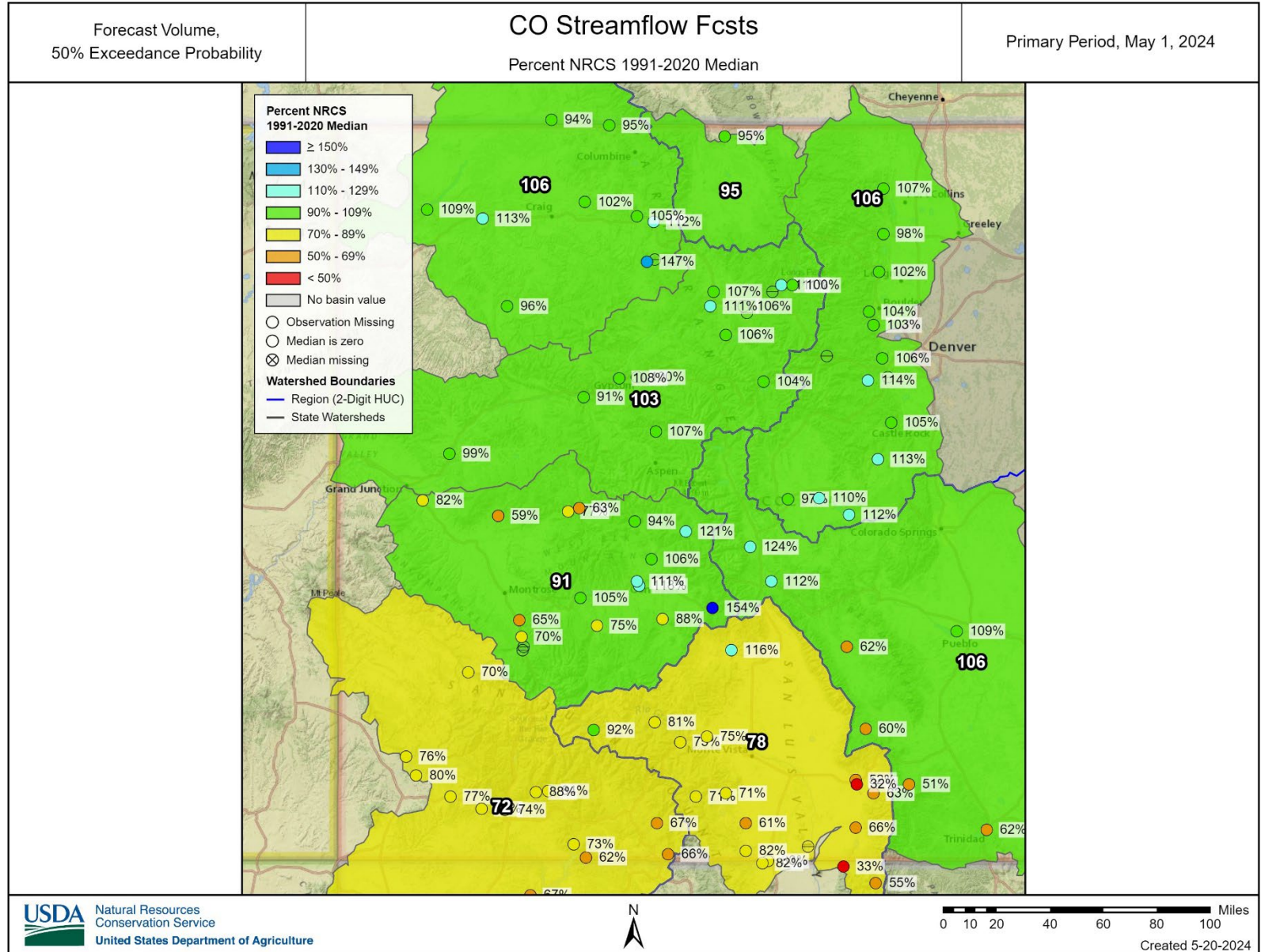




United States Department of Agriculture

Colorado Snow Surveys

Streamflow Forecasts

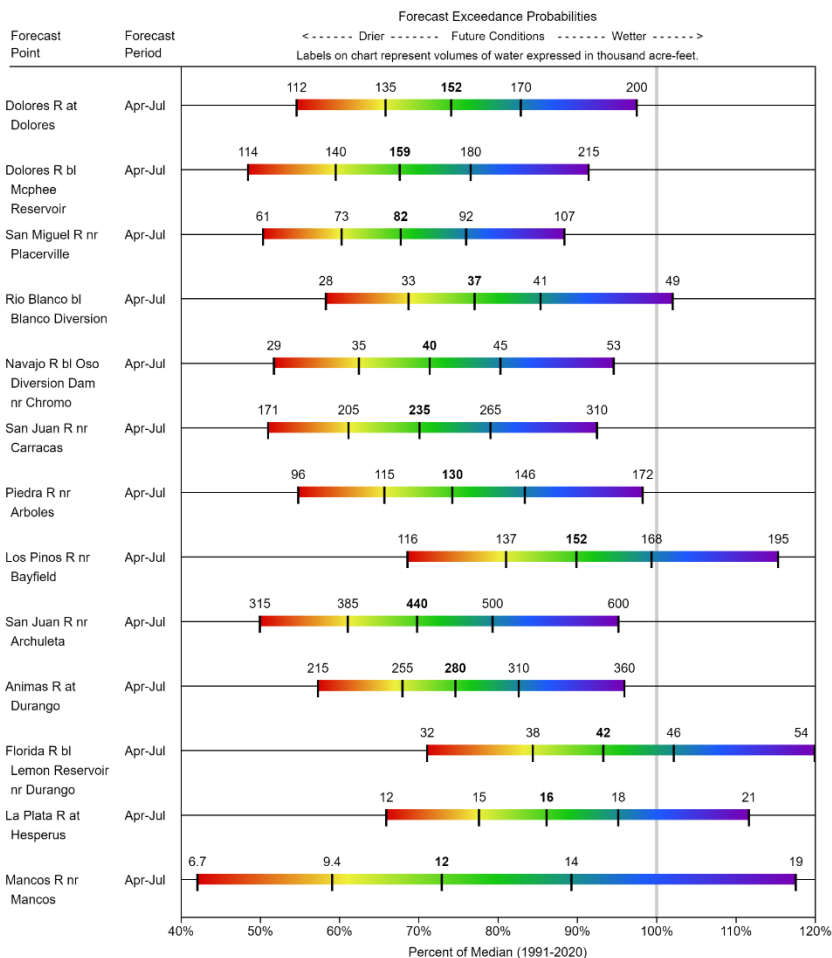




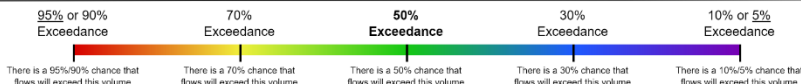
SAN MIGUEL-DOLORES-ANIMAS-SAN JUAN

Water Supply Forecasts

May 1, 2024



Legend



When selected, the following historic streamflow values and statistics will be shown.

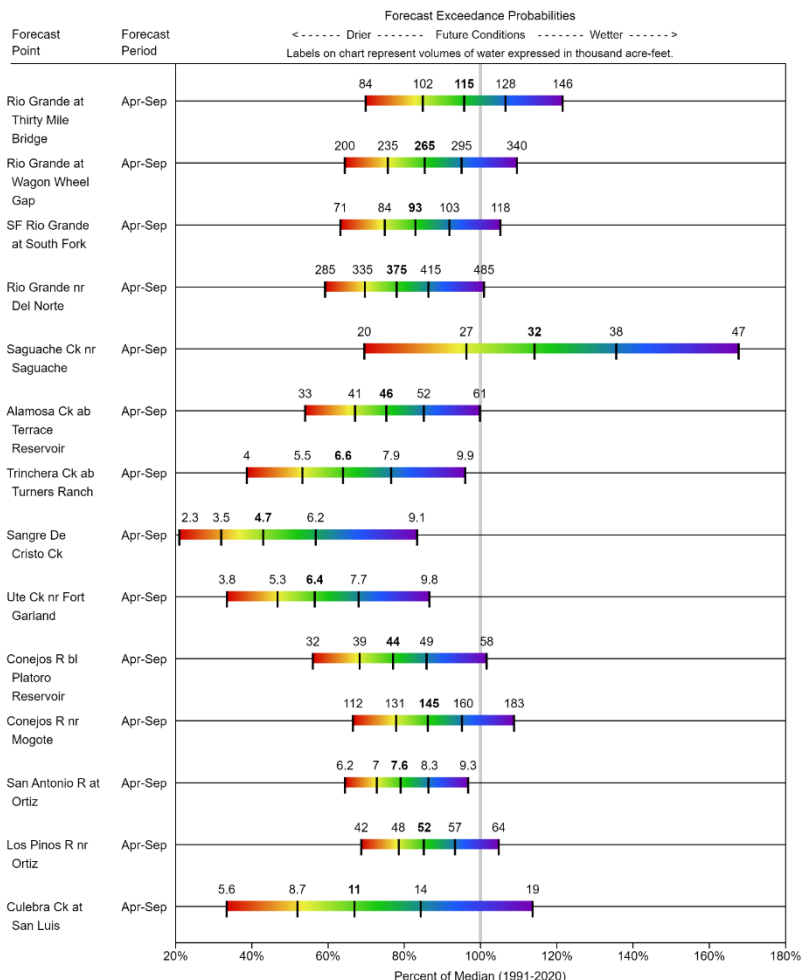
Period of Record Minimum Streamflow KAF (Year) 1991-2020 Normal Streamflow KAF Observed Streamflow KAF Period of Record Maximum Streamflow KAF (Year)

Some forecasts may be for volumes that are regulated or influenced by diversions and water management.

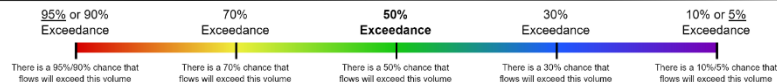
UPPER RIO GRANDE

Water Supply Forecasts

May 1, 2024



Legend



When selected, the following historic streamflow values and statistics will be shown.

Period of Record Minimum Streamflow KAF (Year) 1991-2020 Normal Streamflow KAF Observed Streamflow KAF Period of Record Maximum Streamflow KAF (Year)

Some forecasts may be for volumes that are regulated or influenced by diversions and water management.

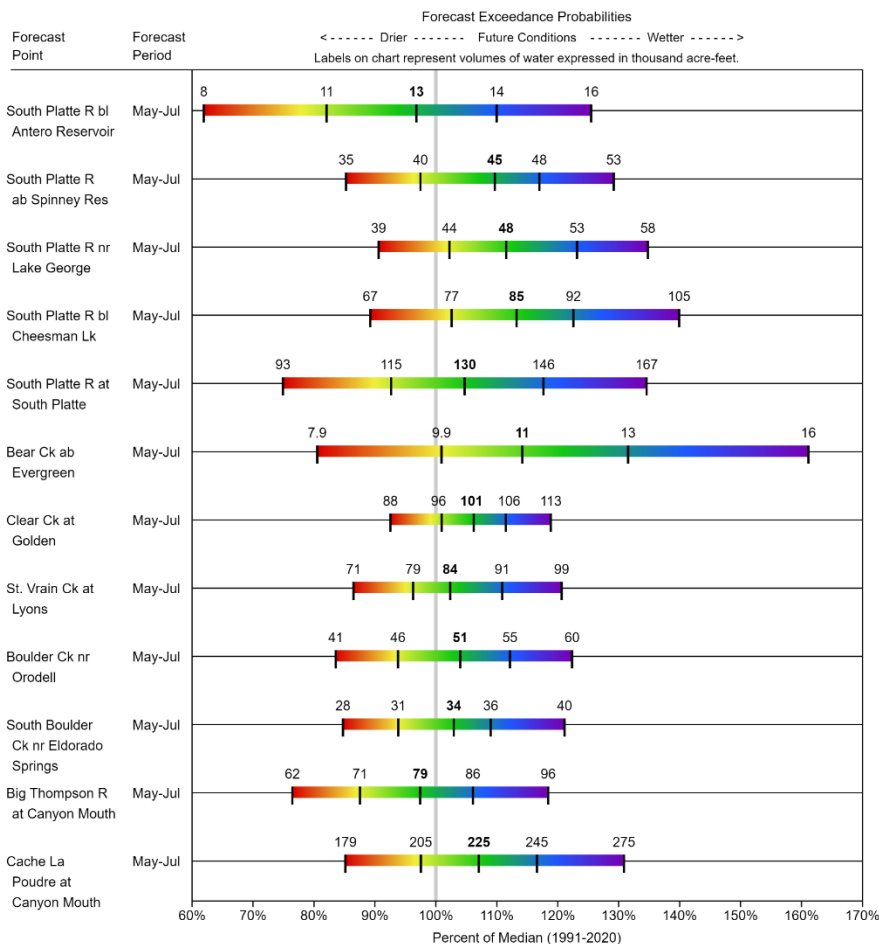


United States Department of Agriculture

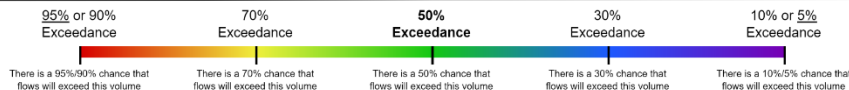
Colorado Snow Surveys

Streamflow Forecasts

SOUTH PLATTE Water Supply Forecasts May 1, 2024



Legend

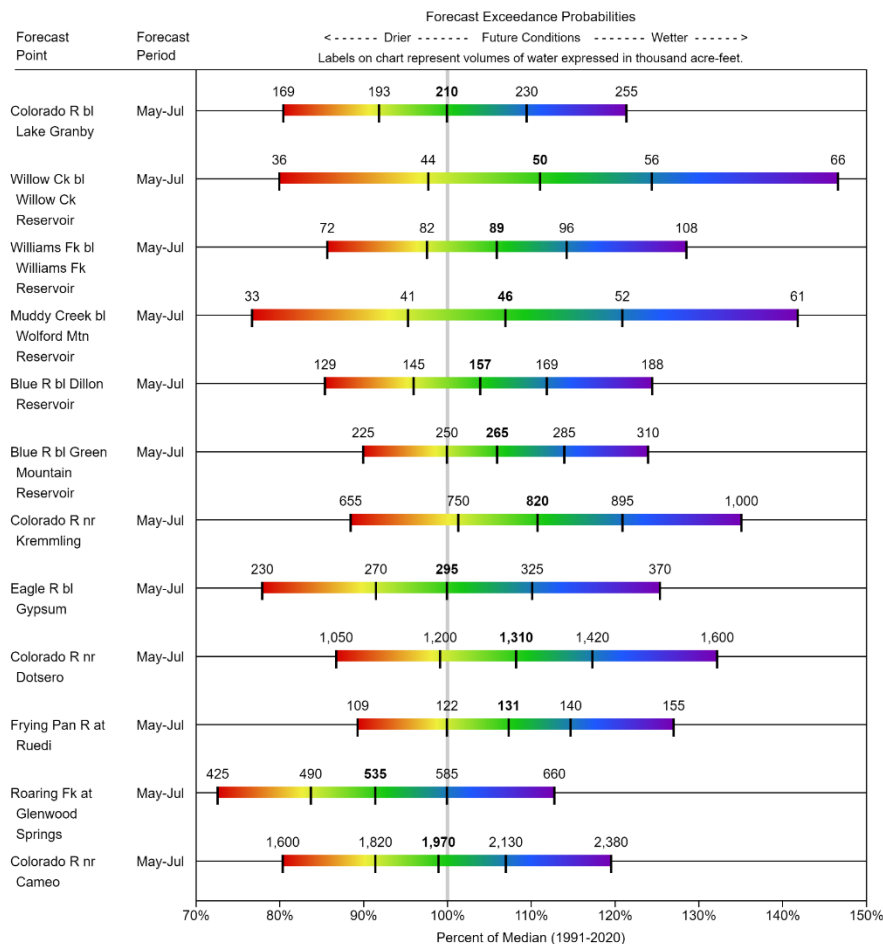


When selected, the following historic streamflow values and statistics will be shown.

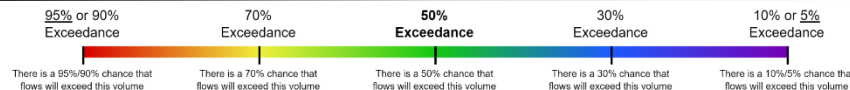
Period of Record Minimum Streamflow KAF (Year) 1991-2020 Normal Streamflow KAF Observed Streamflow KAF Period of Record Maximum Streamflow KAF (Year)

Some forecasts may be for volumes that are regulated or influenced by diversions and water management.

COLORADO HEADWATERS Water Supply Forecasts May 1, 2024



Legend



When selected, the following historic streamflow values and statistics will be shown.

Period of Record Minimum Streamflow KAF (Year) 1991-2020 Normal Streamflow KAF Observed Streamflow KAF Period of Record Maximum Streamflow KAF (Year)

Some forecasts may be for volumes that are regulated or influenced by diversions and water management.

Summary

- Statewide snowpack is 109% of median.
 - Lowest basin is the Rio Grande @ 41%
- Snowpack Peaked at 98% of median.
- Northern Basins are currently slightly above normal snowpack.
- SMDASJ & Rio Grande snowpacks are melting slightly faster
- May storms have slowed snowmelt rates across much of the state
- South Platte, Laramie & N. Platte experienced 2nd snowpack peaks in mid-May
- Statewide precipitation above normal in May across much of state, particularly central Colorado Mountains
- Year-to-date precipitation below normal in SMDASJ Basins
- Statewide reservoir storage is 100% of median
- Near normal runoff expected in the Colorado R. Basin and upper reaches of Arkansas and Northern Colorado.
- Below normal runoff expected in Southwest Colorado.
- Some forecast improvement could come in from May storms and future precipitation. June 1 forecasts to come.



Non-Discrimination Statement:

In accordance with Federal civil rights law and U.S. Department of agriculture (USDA) civil rights regulations and policies, the USDA, its Agencies, offices, and employees, and institutions participating in or administering USDA programs are prohibited from discriminating based on race, color, national origin, religion, sex, gender identity (including gender expression), sexual orientation, disability, age, marital status, family/parental status, income derived from a public assistance program, political beliefs, or reprisal or retaliation for prior civil rights activity, in any program or activity conducted or funded by USDA (not all bases apply to all programs). Remedies and complaint filing deadlines vary by program or incident.

Persons with disabilities who require alternative means of communication for program information (e.g., Braille, large print, audiotape, American Sign Language, etc.) should contact the responsible Agency or USDA 's TARGET Center at (202) 720-2600 (voice and TTY) or contact USDA through the Federal Relay Service at (800) 877-8339. Additionally, program information may be made available in languages other than English.

To file a program discrimination complaint, complete the USDA Program Discrimination Complaint Form, AD-3027, found online at [How to File a Program Discrimination Complaint](#) and at any USDA office or write a letter addressed to USDA and provide in the letter all of the information requested in the form. To request a copy of the complaint form, call (866) 632-9992. Submit your completed form or letter to USDA by: (1) mail: U.S. Department of Agriculture, Office of the Assistant Secretary for Civil Rights, 1400 Independence Avenue, SW, Washington, D.C. 20250-9410; (2) fax: (202) 690-7442; or (3) email: program.intake@usda.gov.



United States Department of Agriculture

Colorado Snow Surveys

Water Conditions Monitoring Committee Meeting

May 21st, 2024

NRCS Snow Survey and Water Supply Forecasting
Program

Brian Domonkos

Hydrologist

Brian.Domonkos@usda.gov

720-544-2853

<http://www.nrcs.usda.gov/wps/portal/nrcs/main/co/snow/>