



United States Department of Agriculture

Colorado Snow Surveys

Water Conditions Monitoring Committee Meeting March 19th, 2024

NRCS Snow Survey and Water Supply Forecasting Program

Nagam Gill

Hydrologist

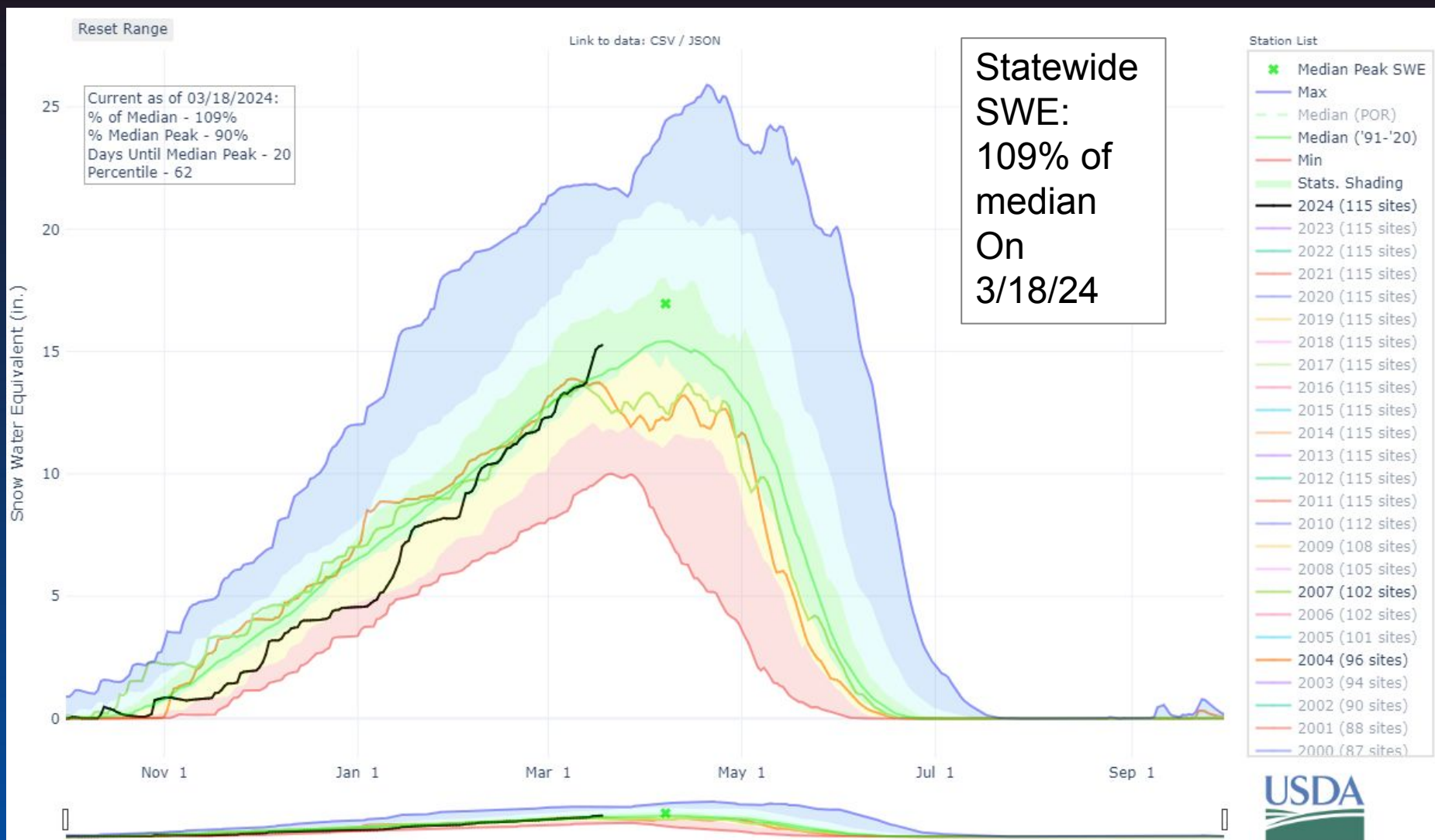
Nagam.gill@usda.gov

720-576-7863

<http://www.nrcs.usda.gov/wps/portal/nrcs/main/co/snow/>



Colorado Snow Surveys

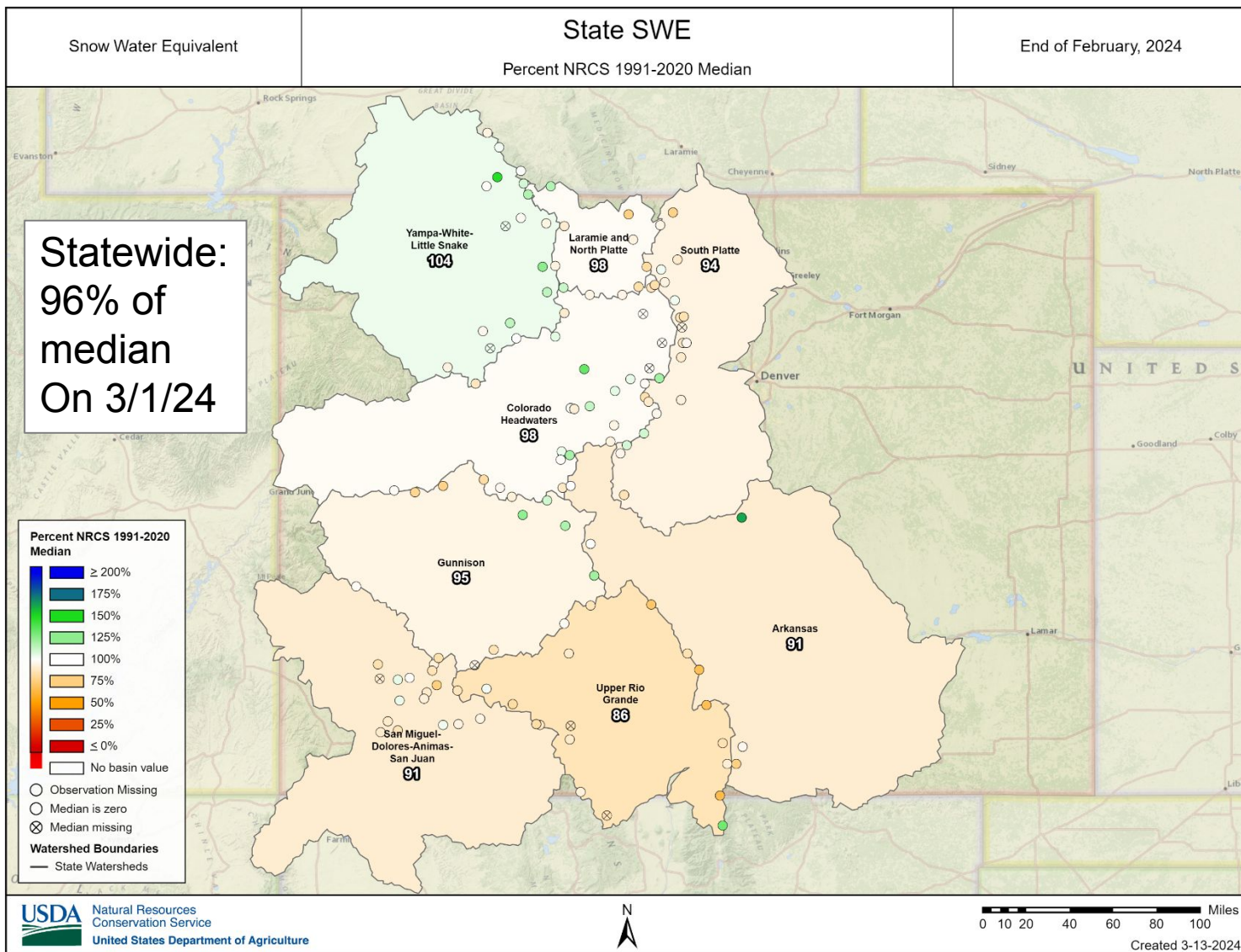




United States Department of Agriculture

Colorado Snow Surveys

Snowpack

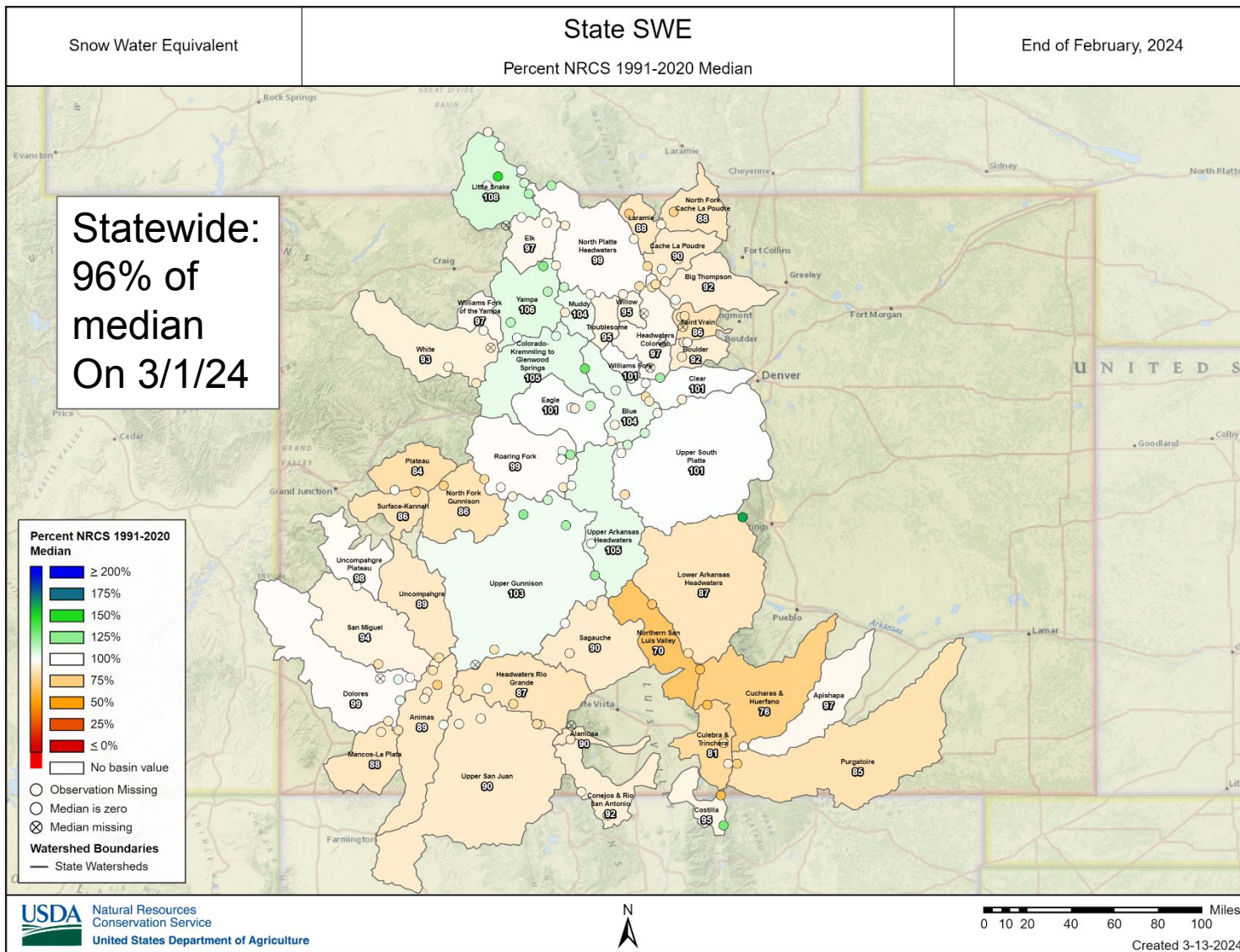




United States Department of Agriculture

Colorado Snow Surveys

Snowpack

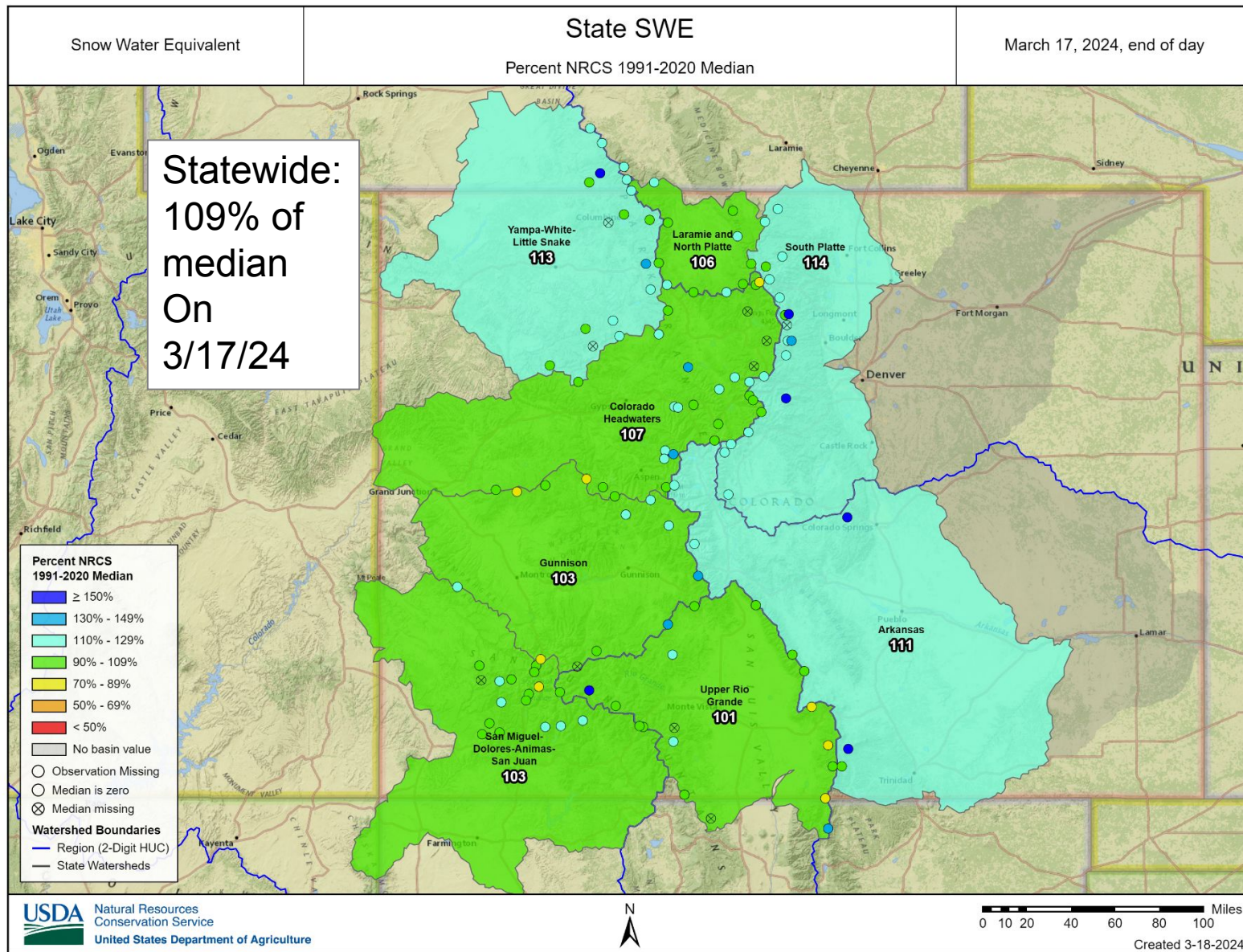


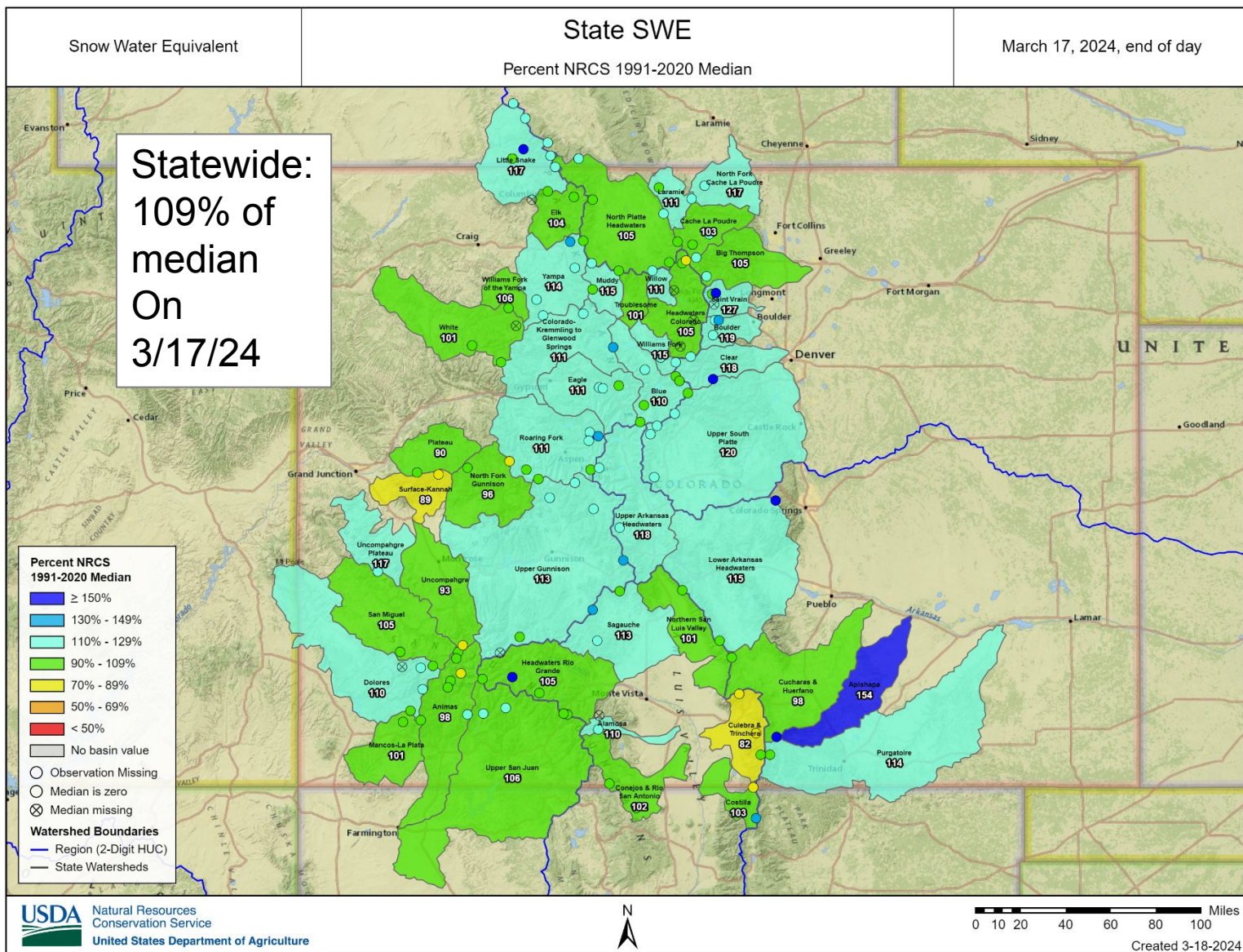


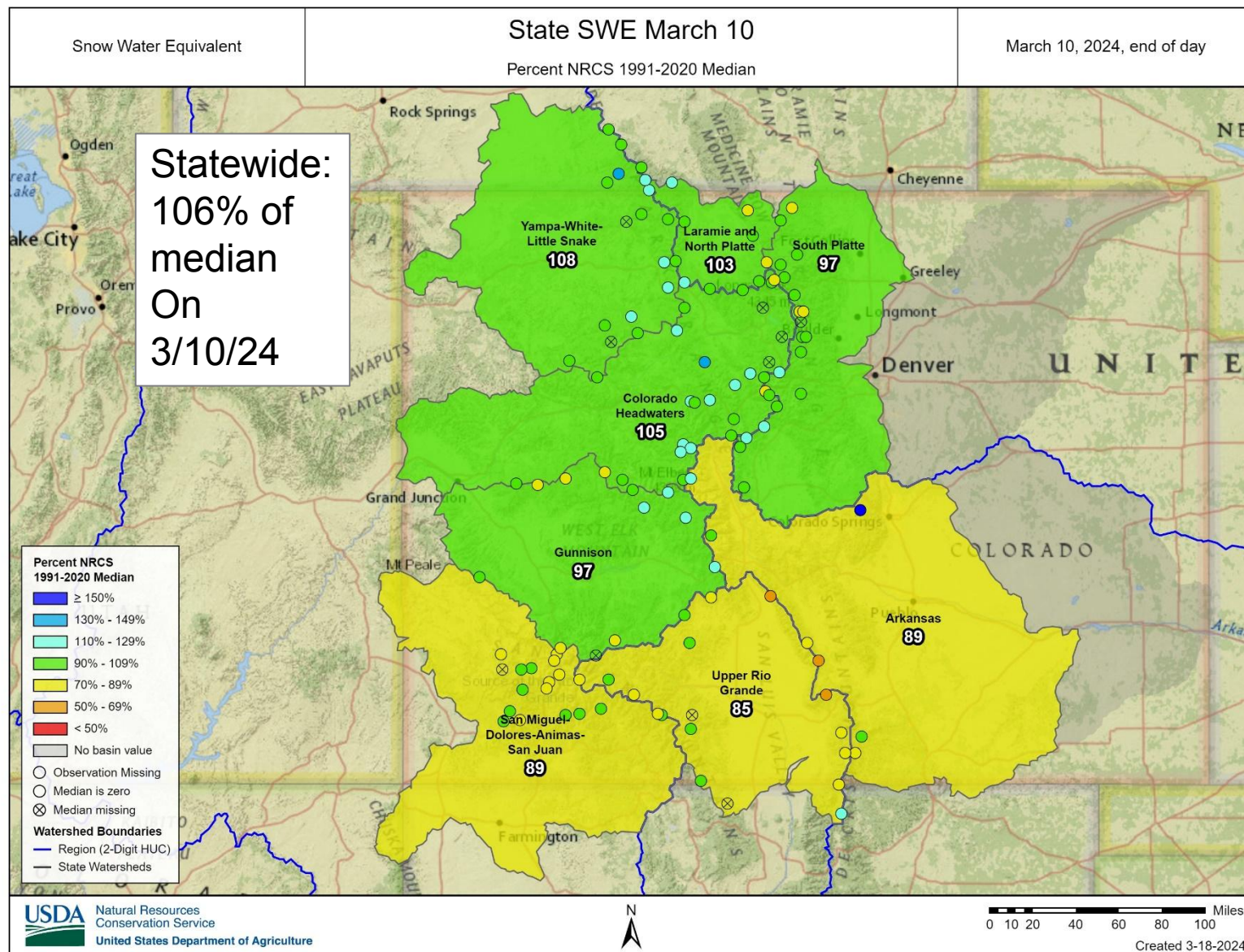
United States Department of Agriculture

Colorado Snow Surveys

Snowpack





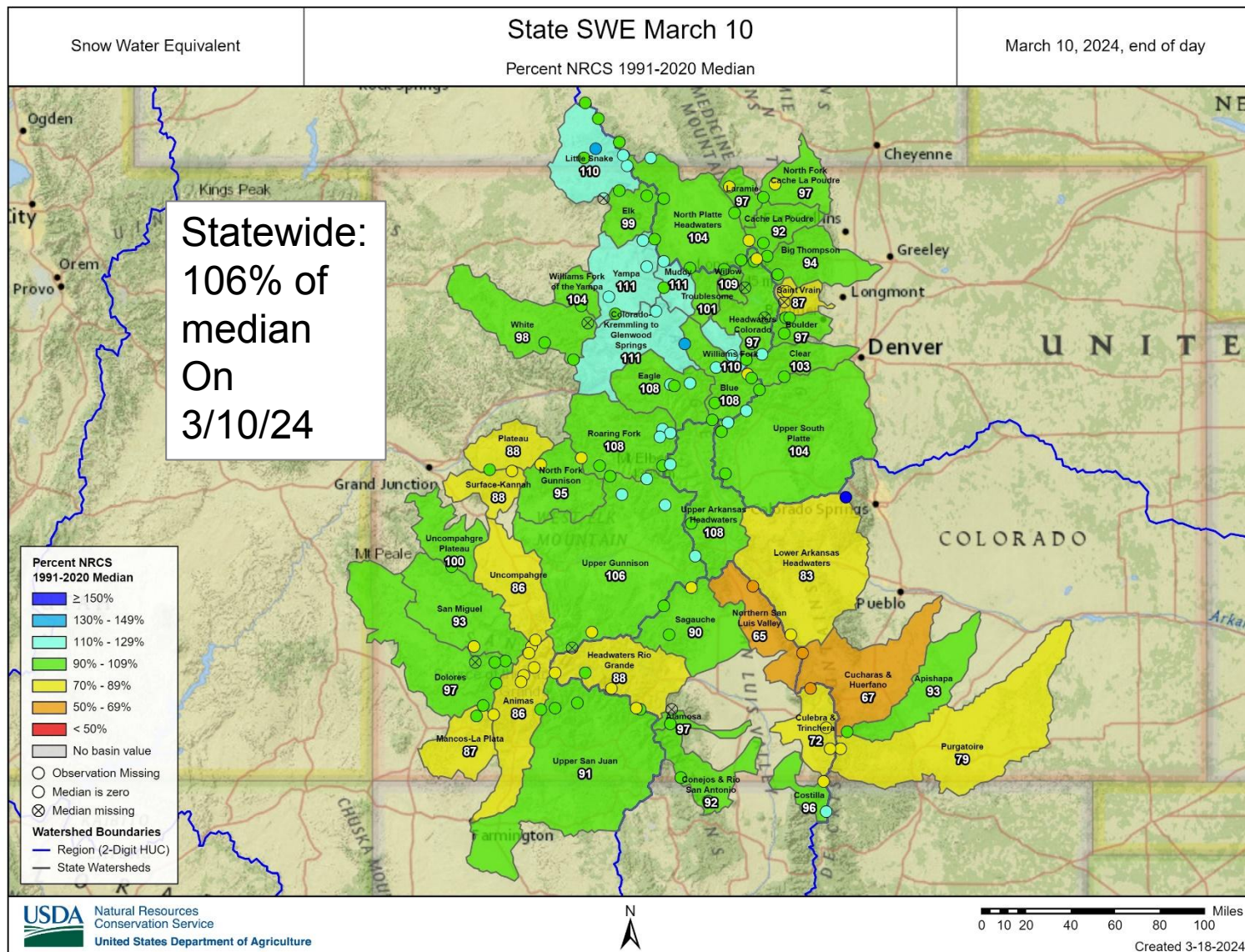


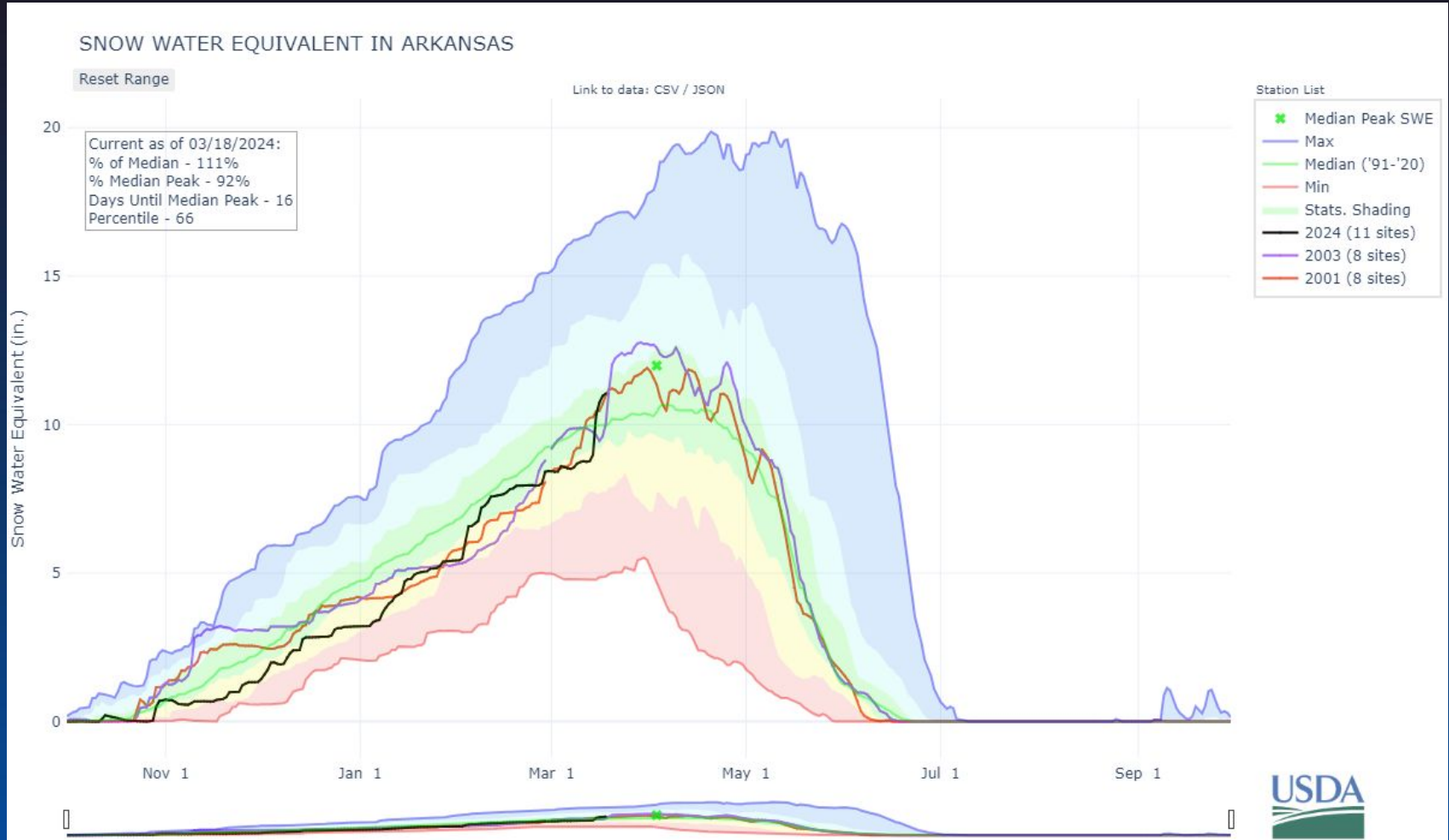


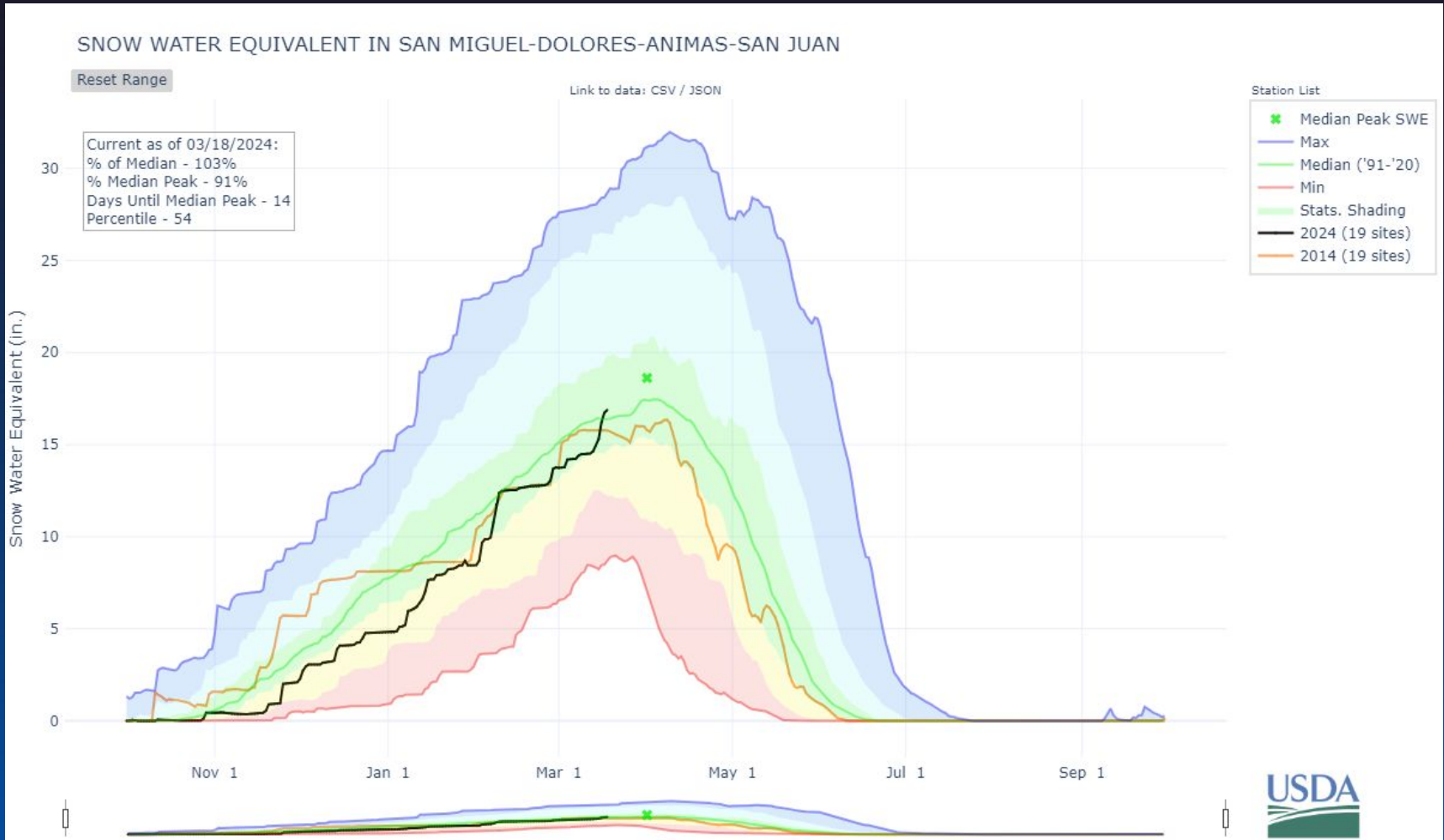
United States Department of Agriculture

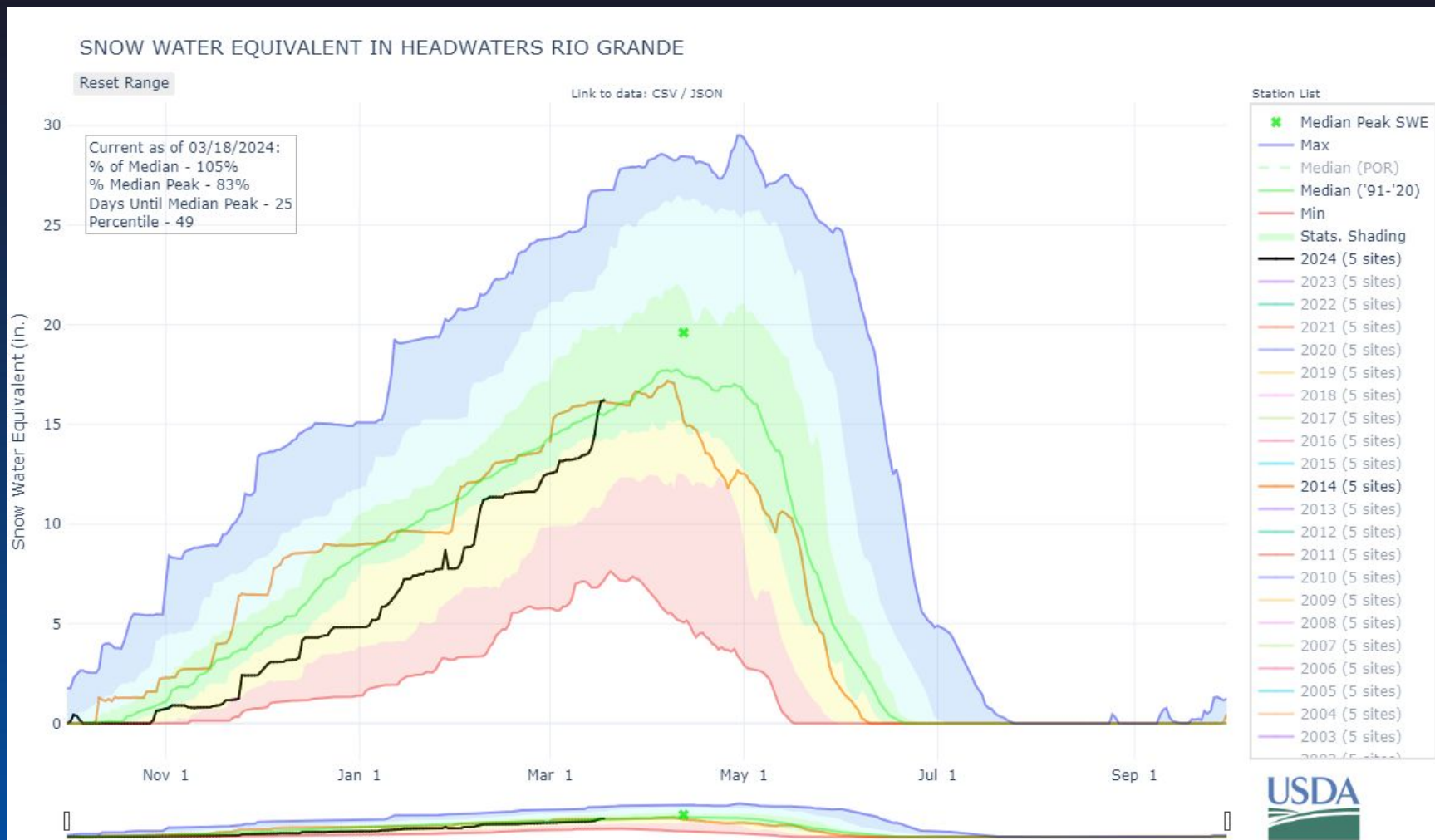
Colorado Snow Surveys

Snowpack







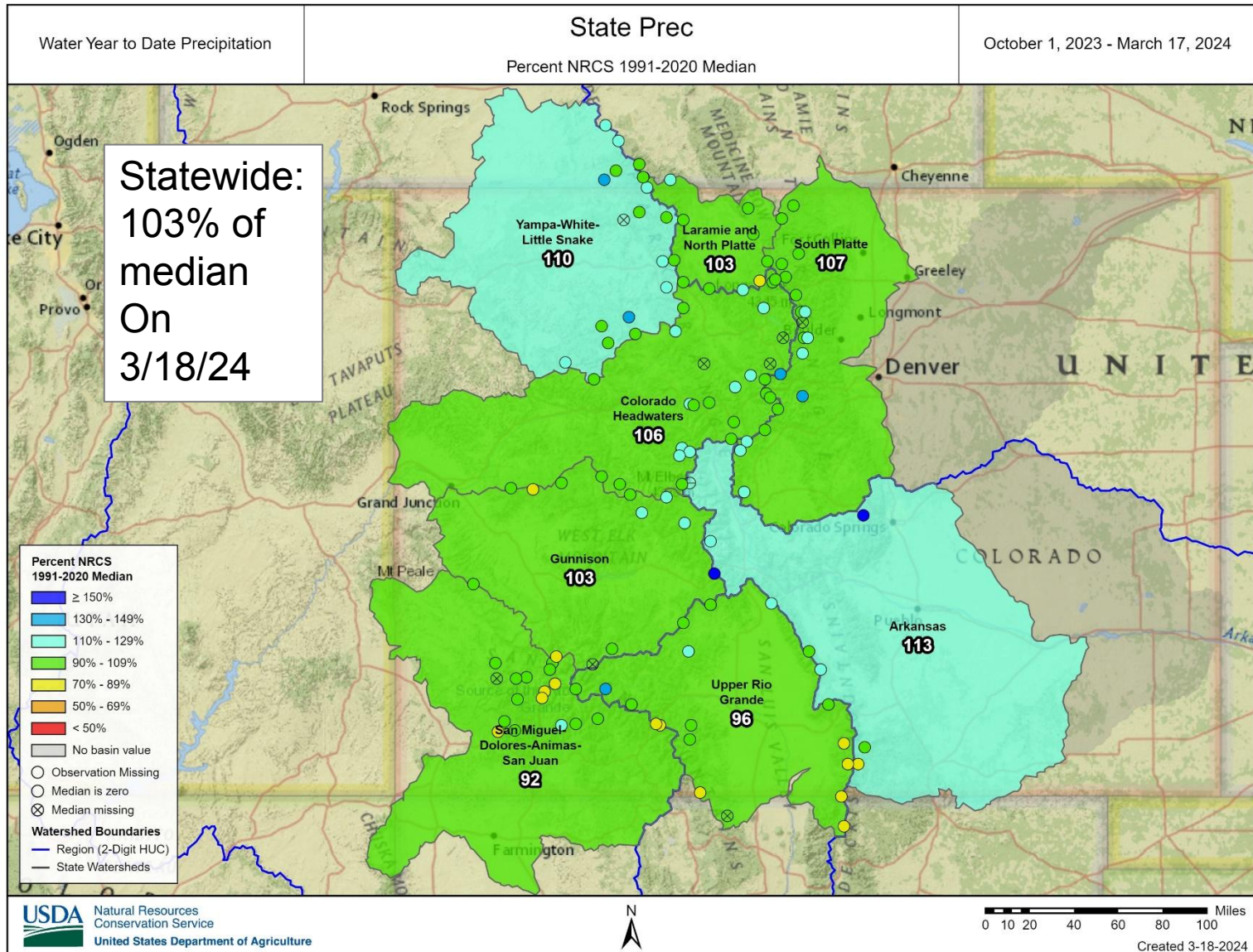




United States Department of Agriculture

Colorado Snow Surveys

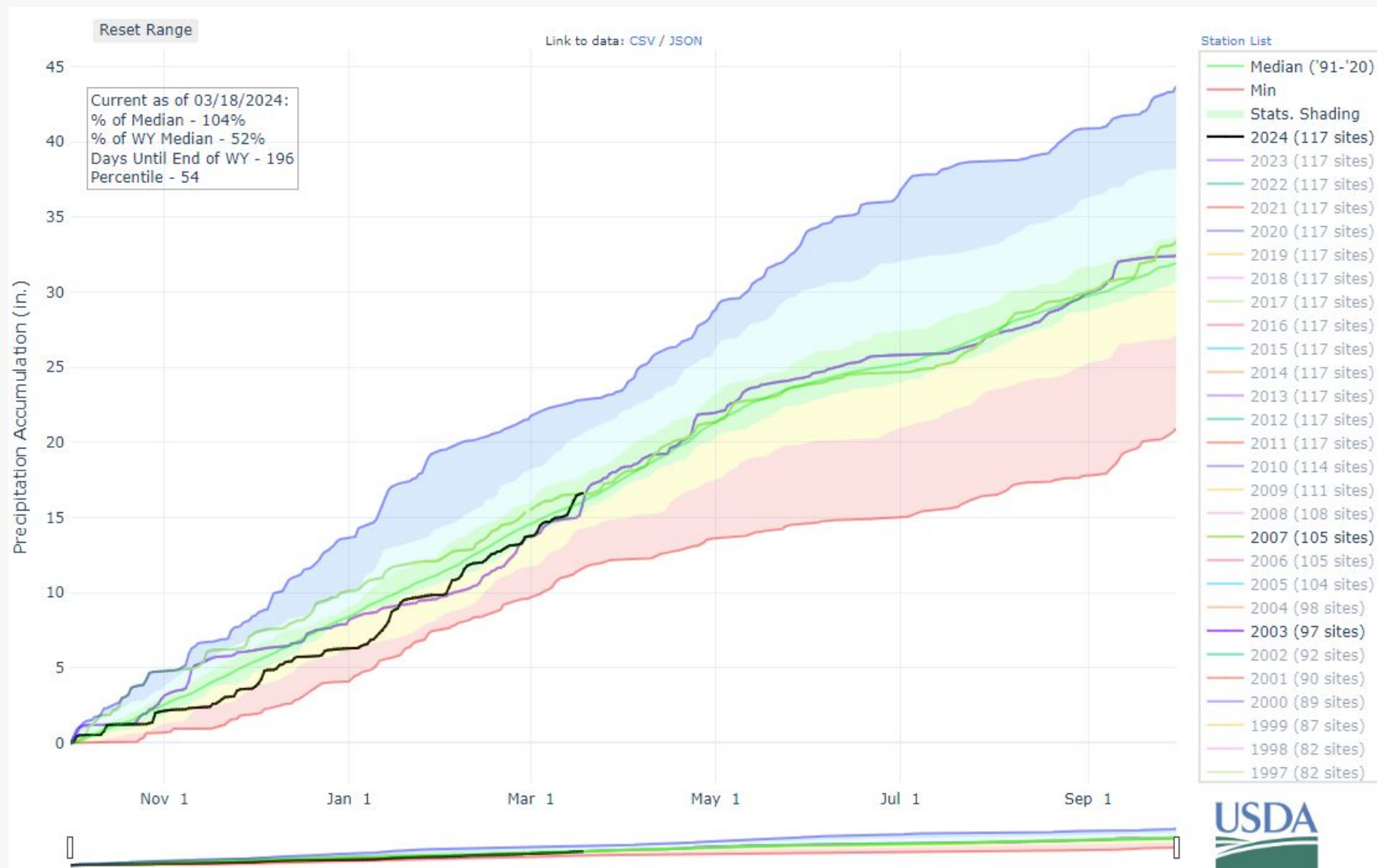
WY Precipitation





Colorado Snow Surveys

PRECIPITATION ACCUMULATION IN STATE OF COLORADO

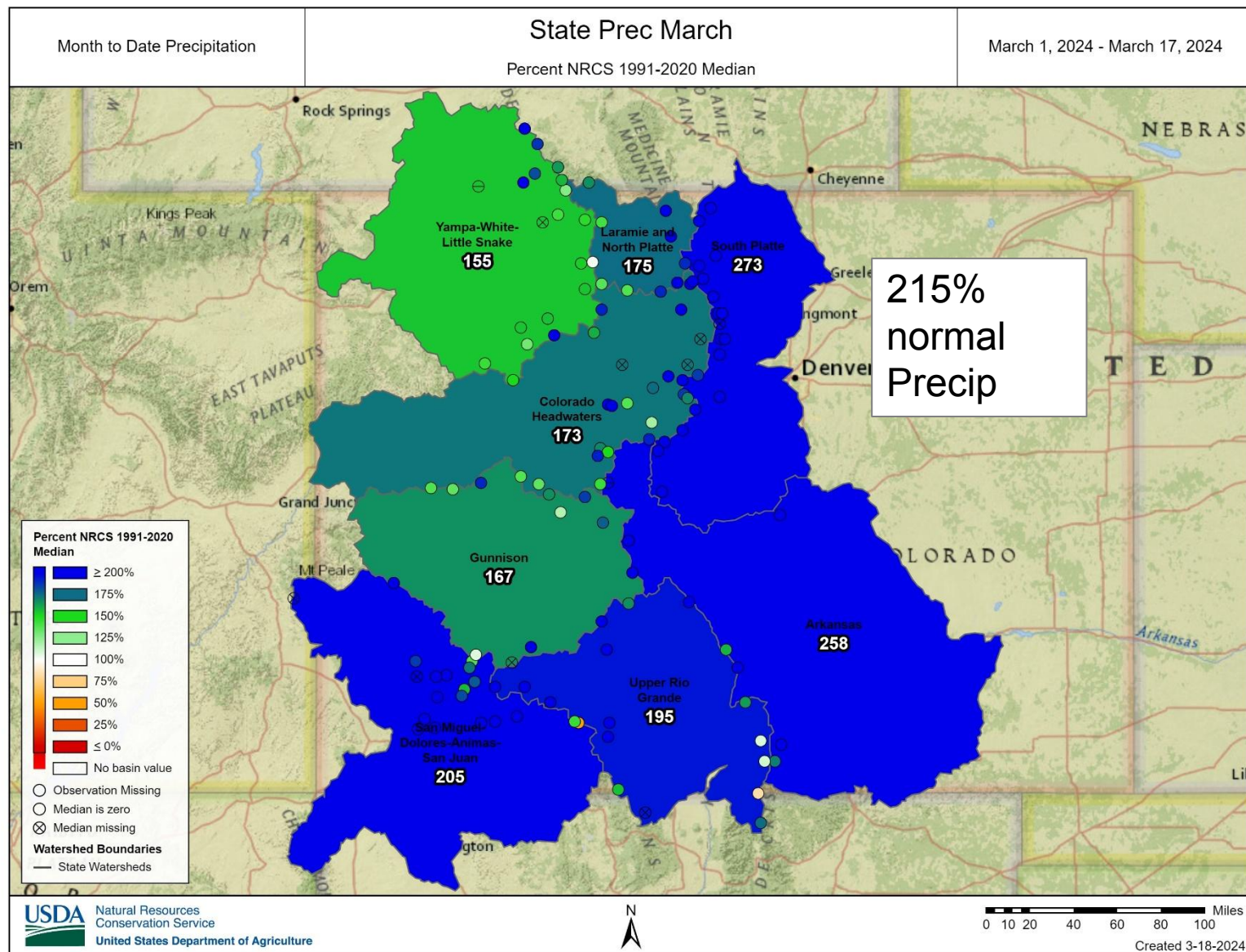




United States Department of Agriculture

Colorado Snow Surveys

MTD Precipitation

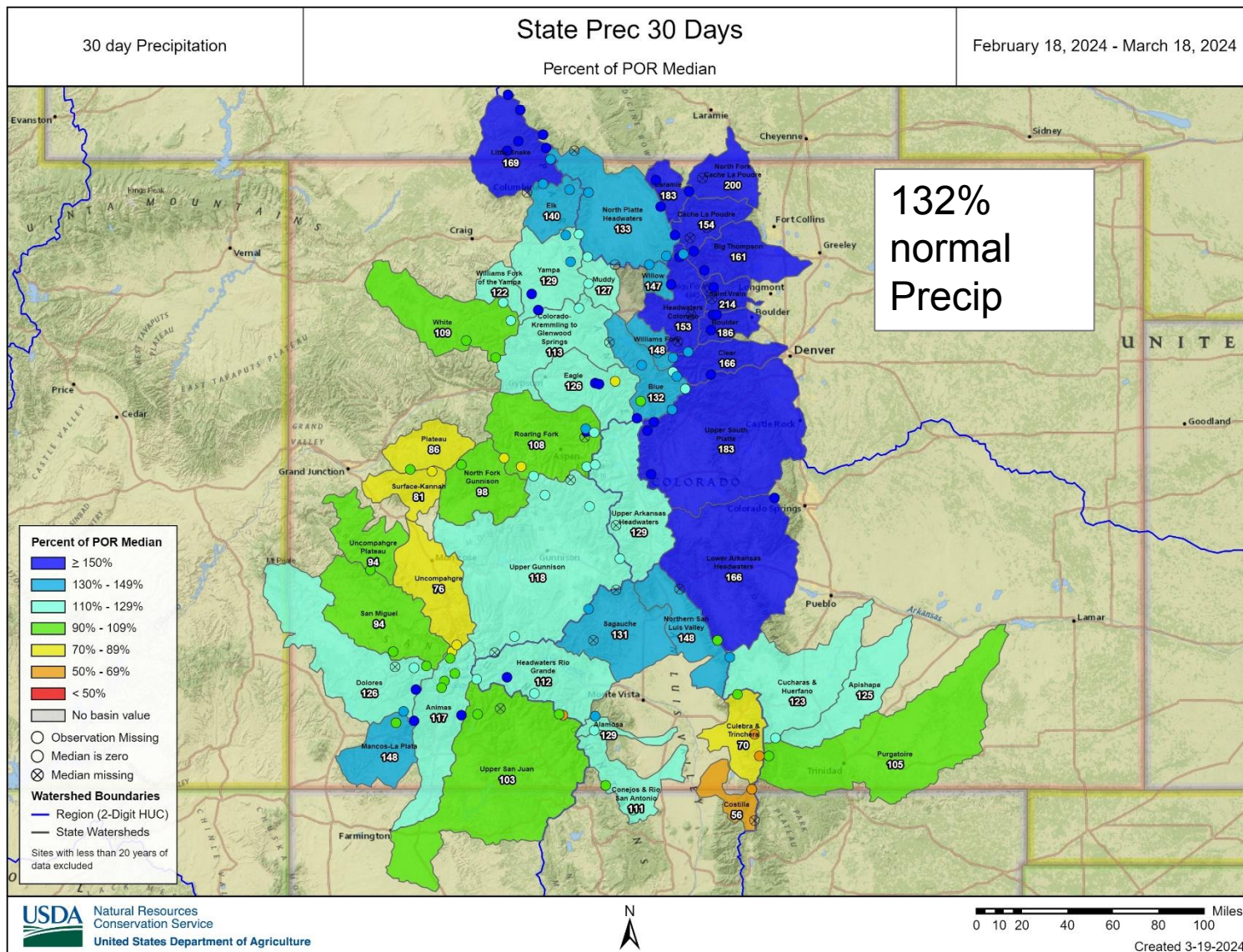




United States Department of Agriculture

Colorado Snow Surveys

WY Precipitation

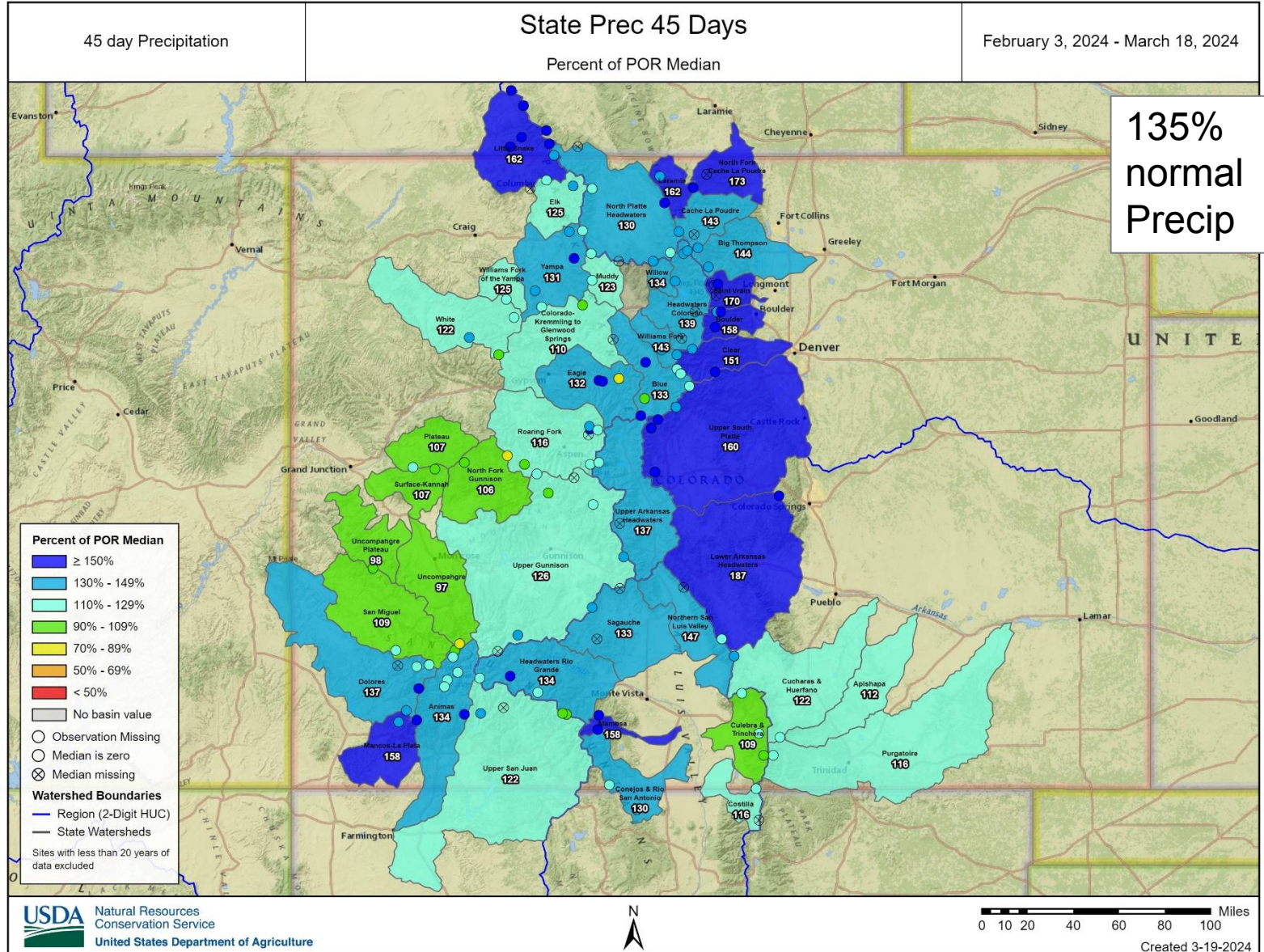




United States Department of Agriculture

Colorado Snow Surveys

Precipitation

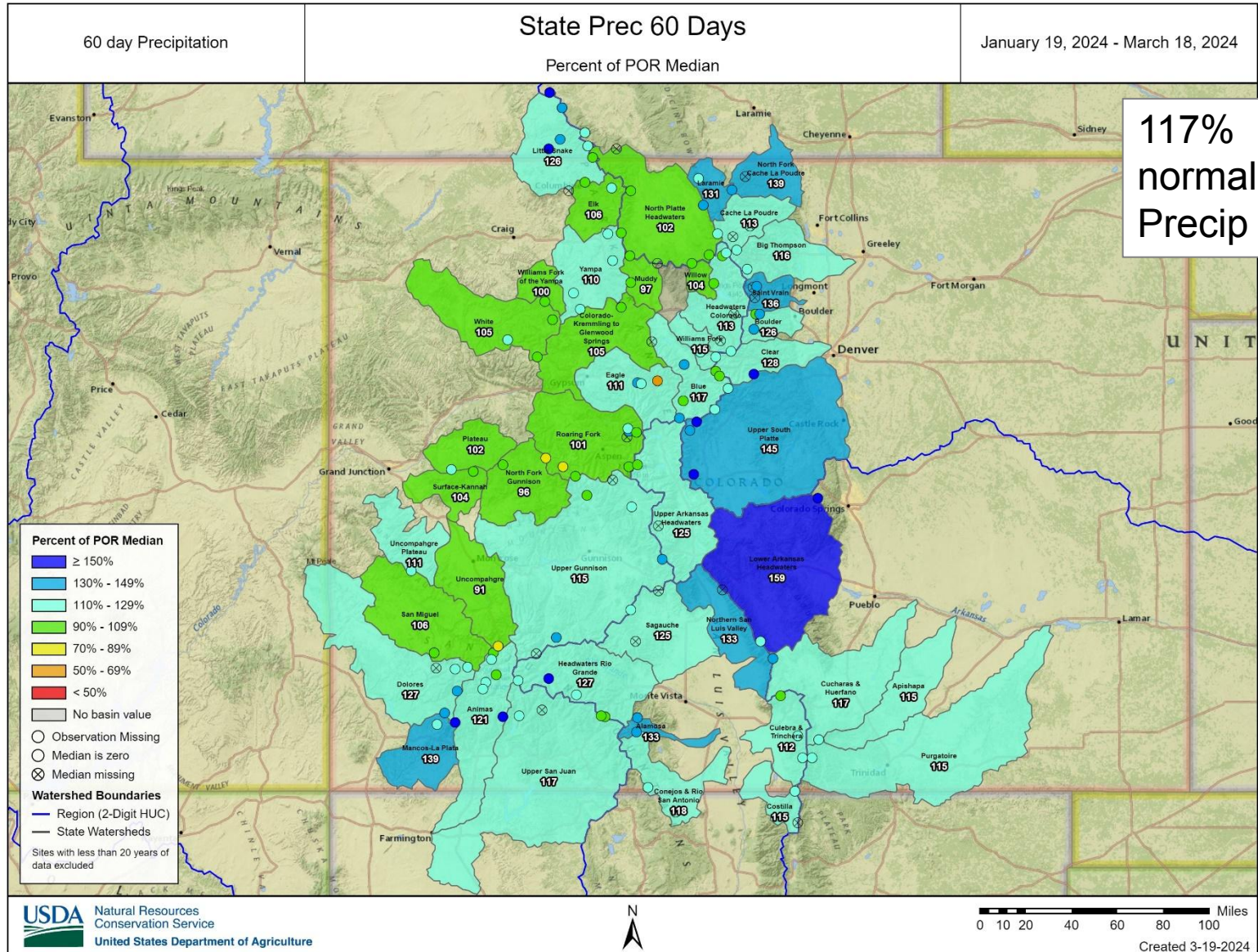




United States Department of Agriculture

Colorado Snow Surveys

Precipitation

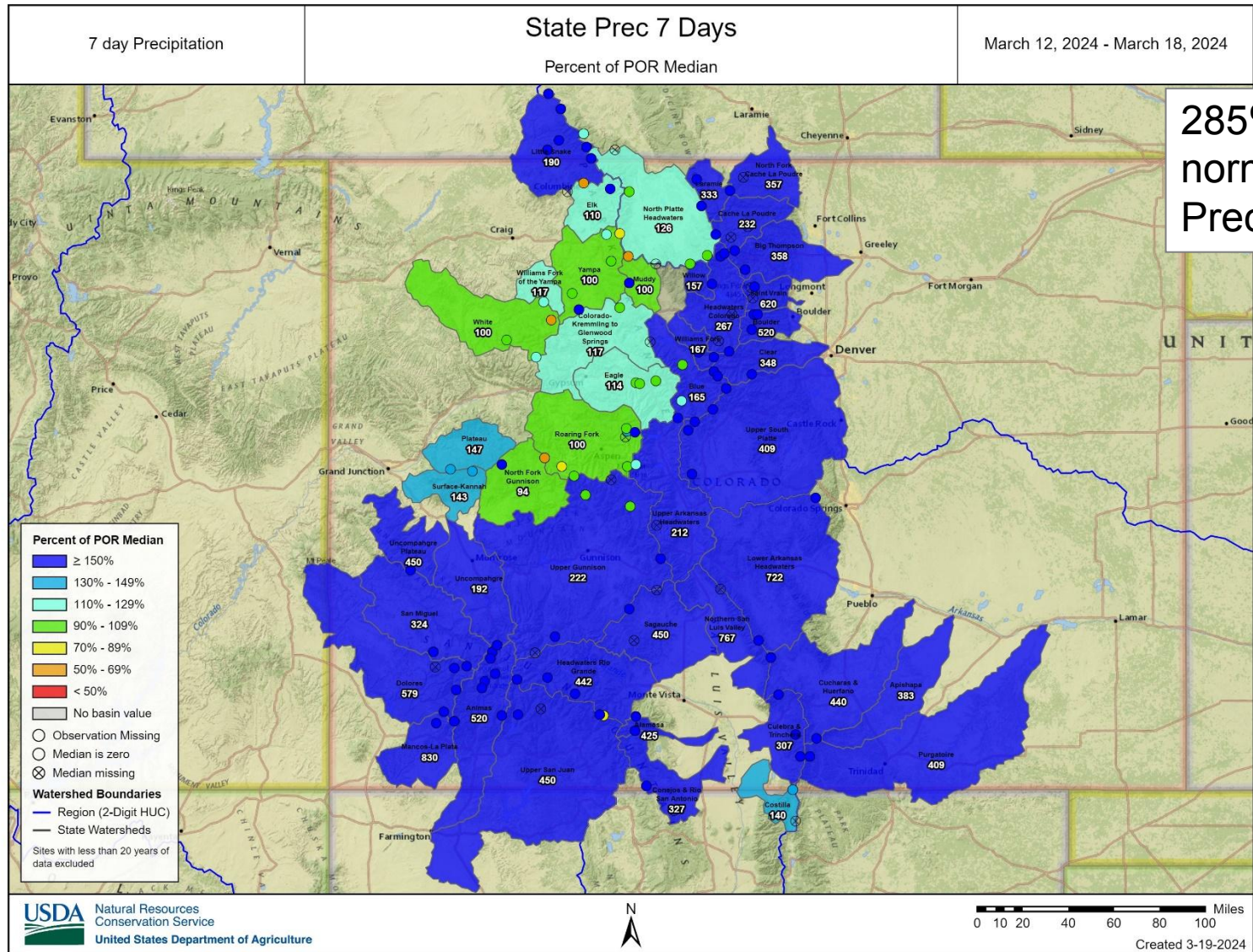




United States Department of Agriculture

Colorado Snow Surveys

Precipitation





Colorado Snow Surveys

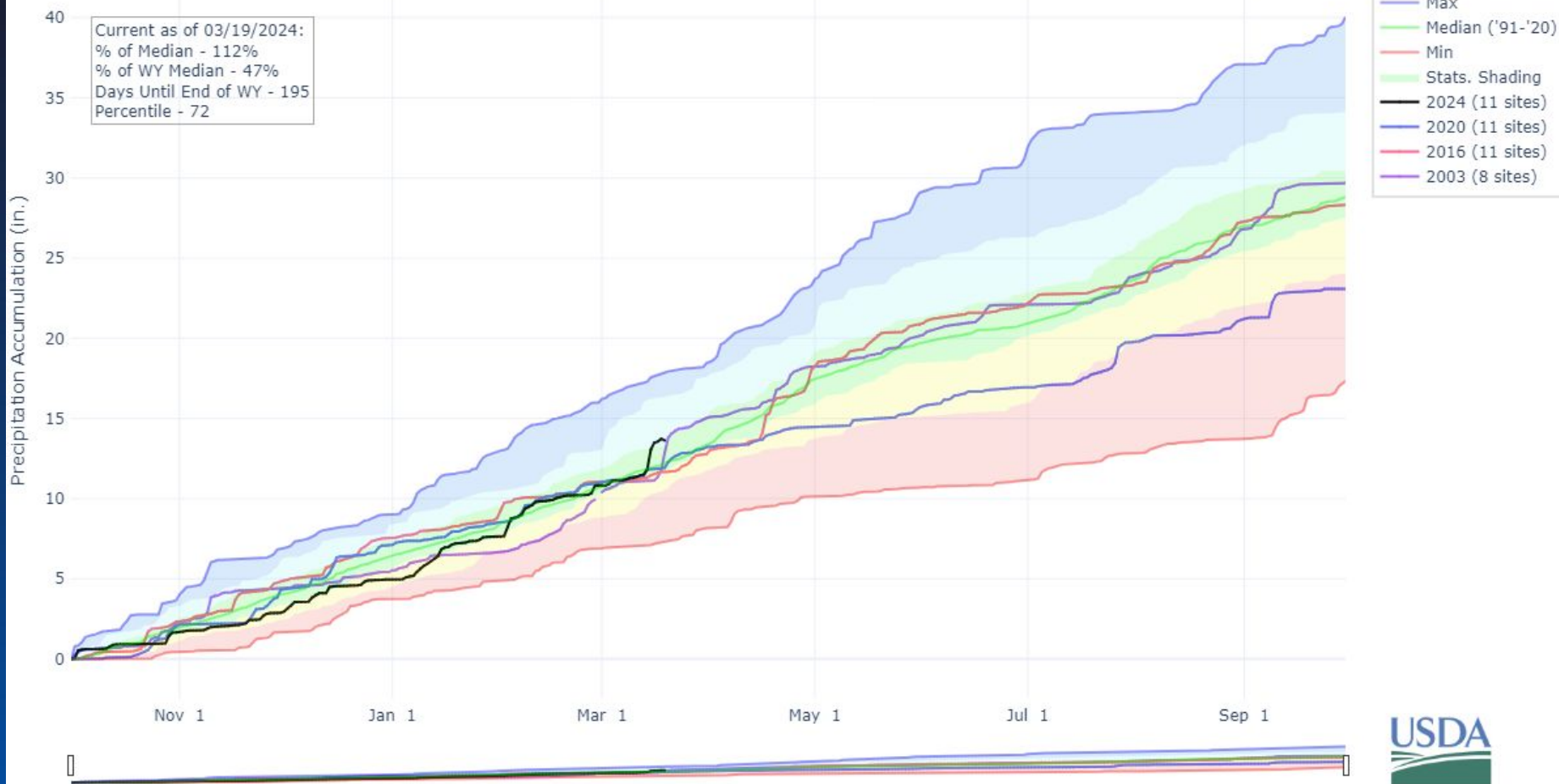
PRECIPITATION ACCUMULATION IN ARKANSAS

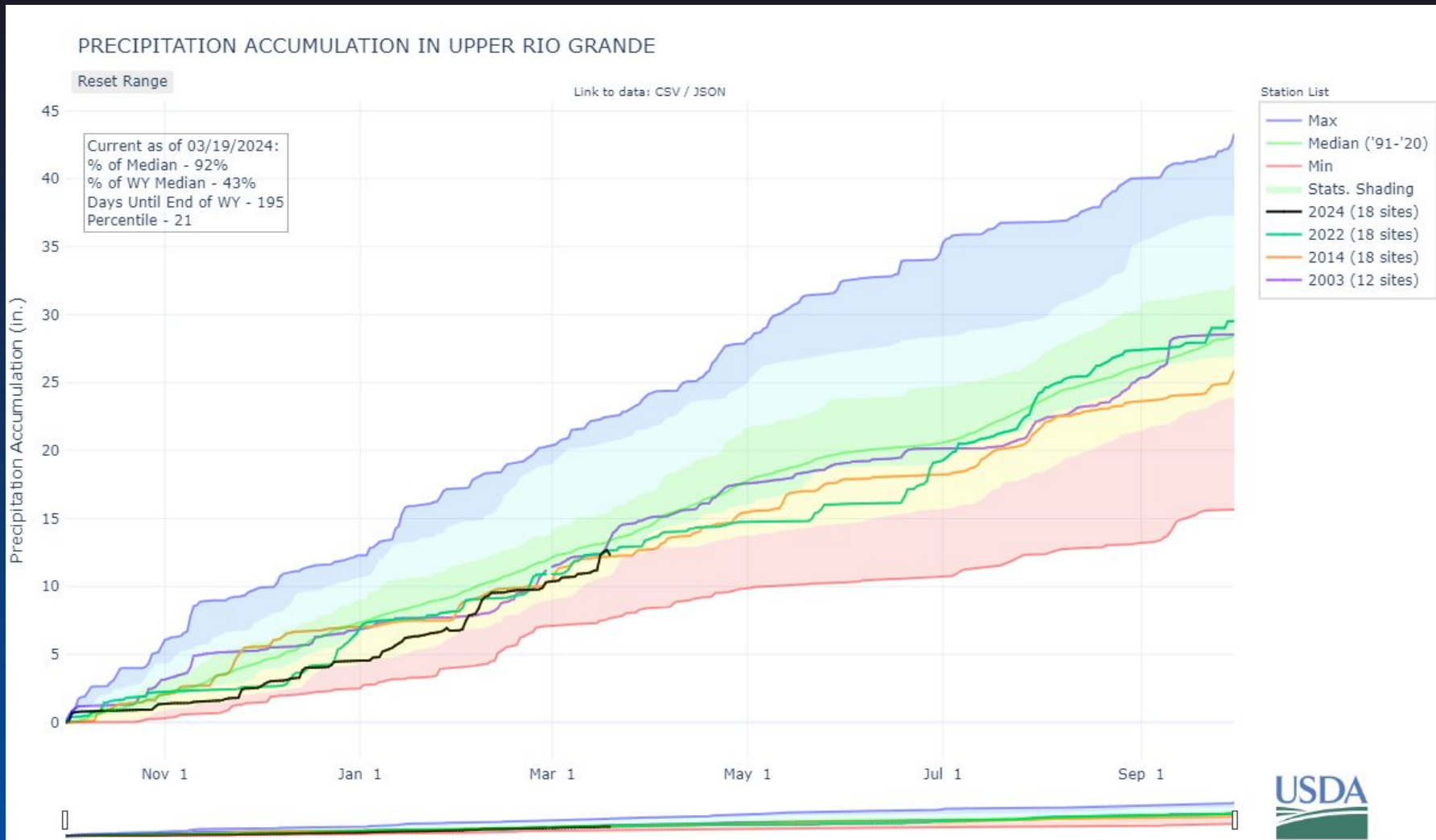
Reset Range

[Link to data: CSV / JSON](#)

Station List

Current as of 03/19/2024:
% of Median - 112%
% of WY Median - 47%
Days Until End of WY - 195
Percentile - 72







Colorado Snow Surveys

PRECIPITATION ACCUMULATION IN SOUTH PLATTE

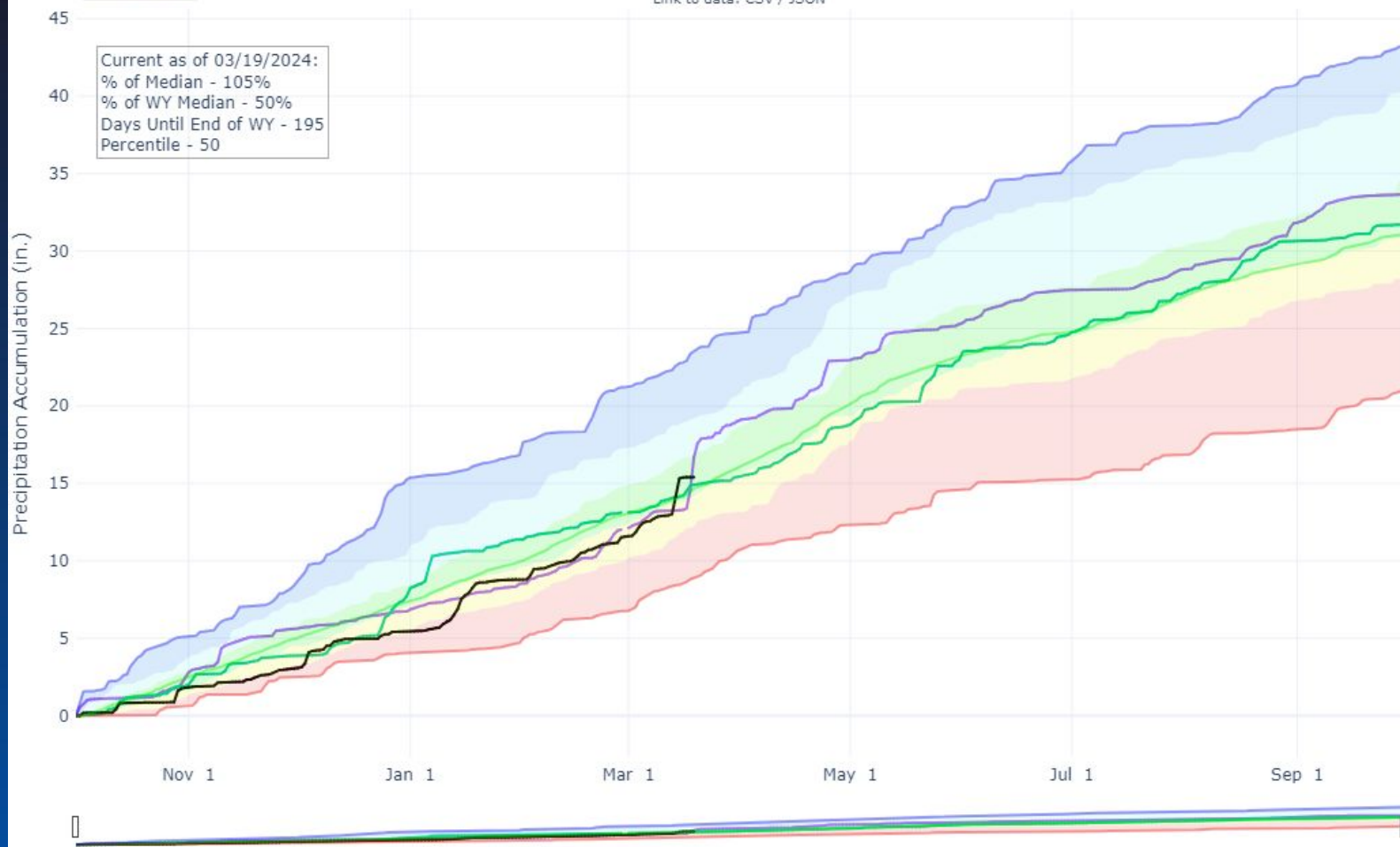
Reset Range

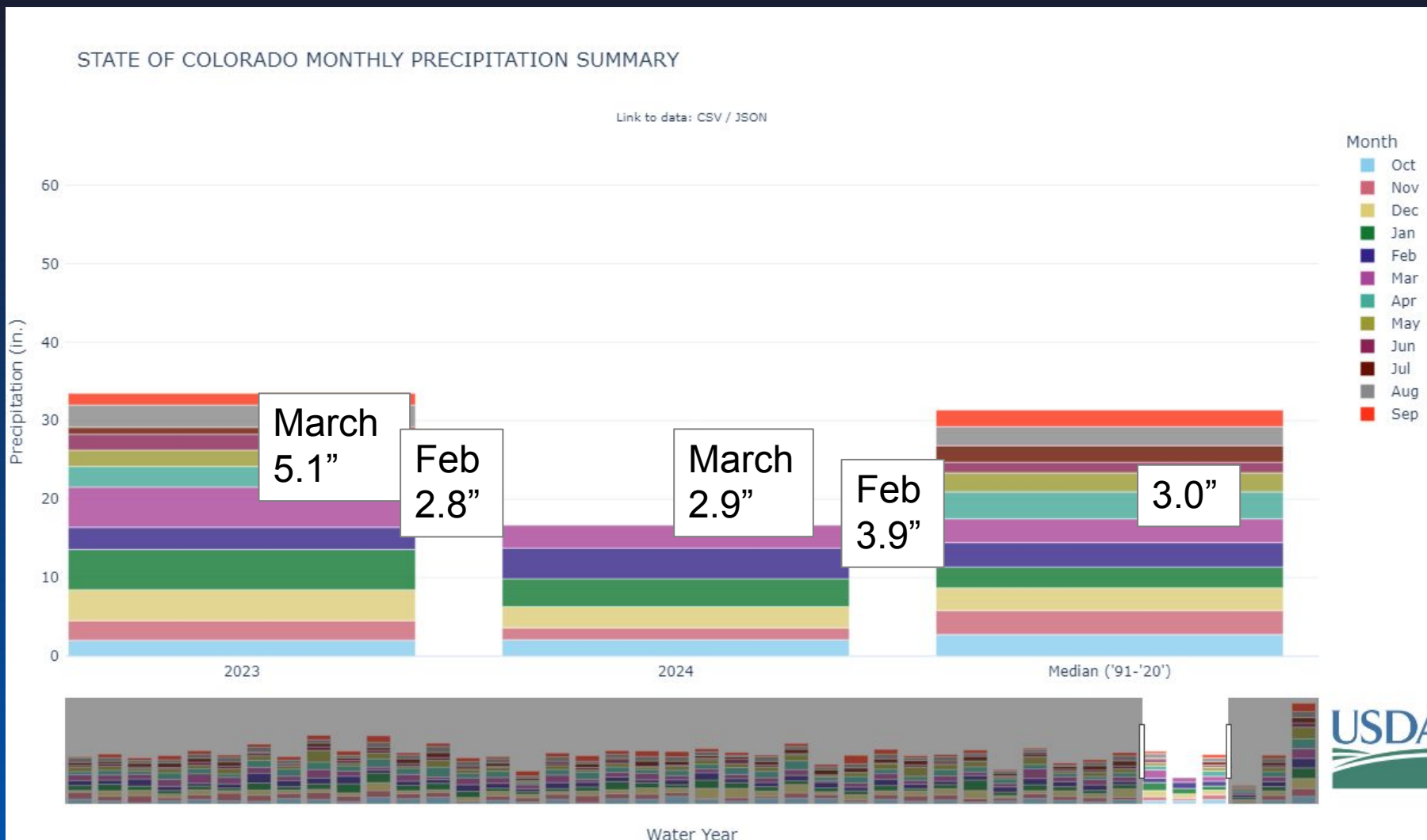
[Link to data: CSV / JSON](#)

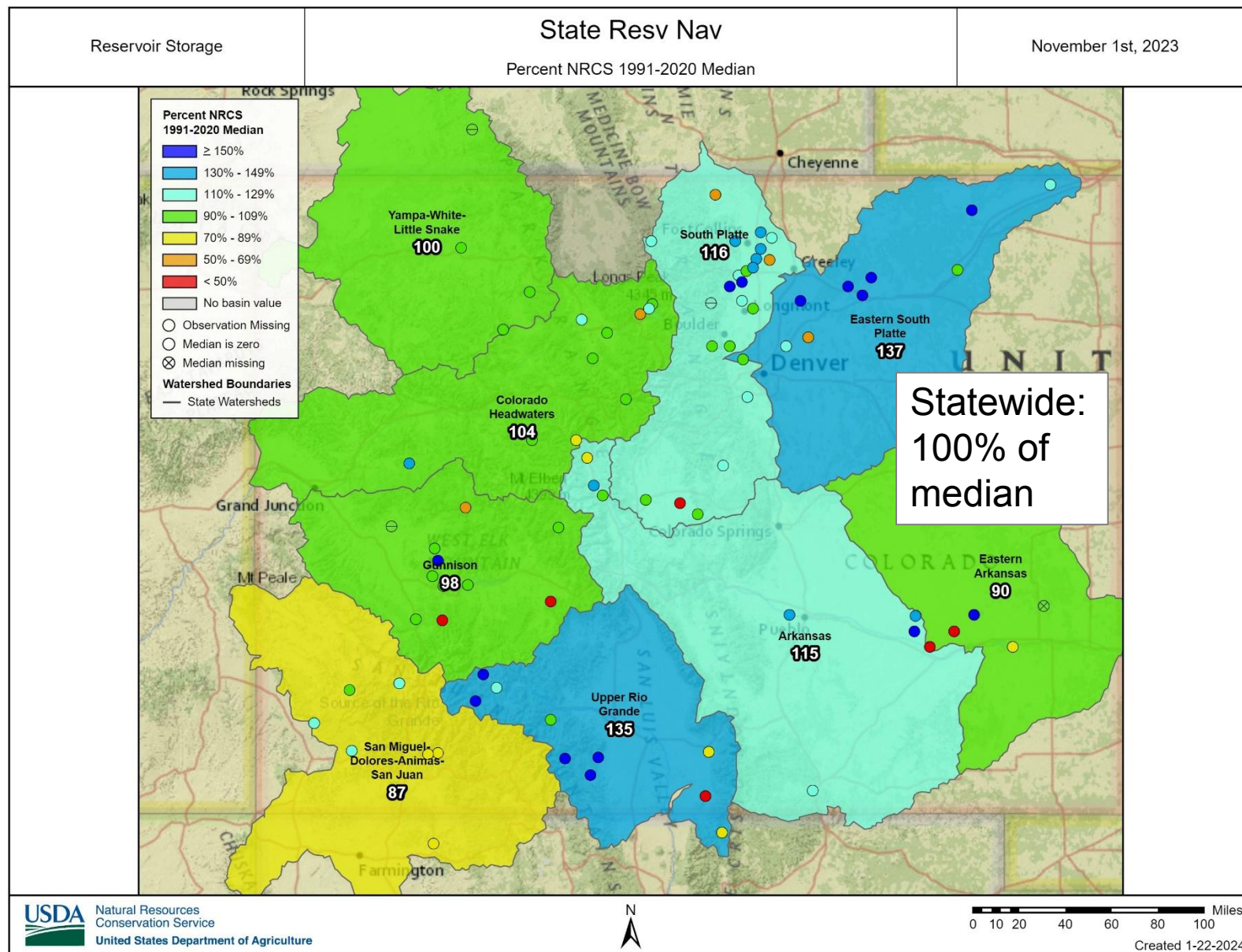
Current as of 03/19/2024:
% of Median - 105%
% of WY Median - 50%
Days Until End of WY - 195
Percentile - 50

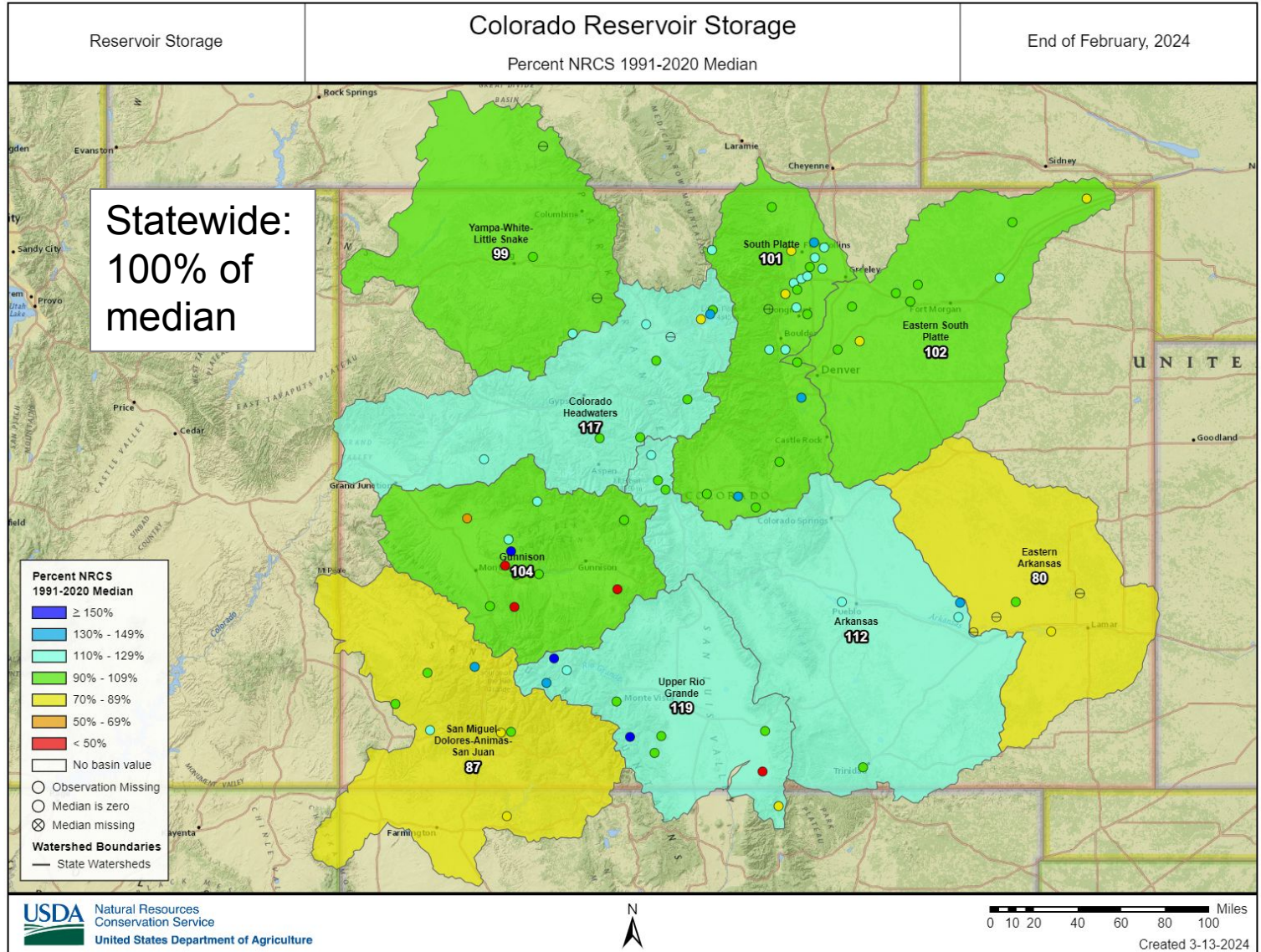
Station List

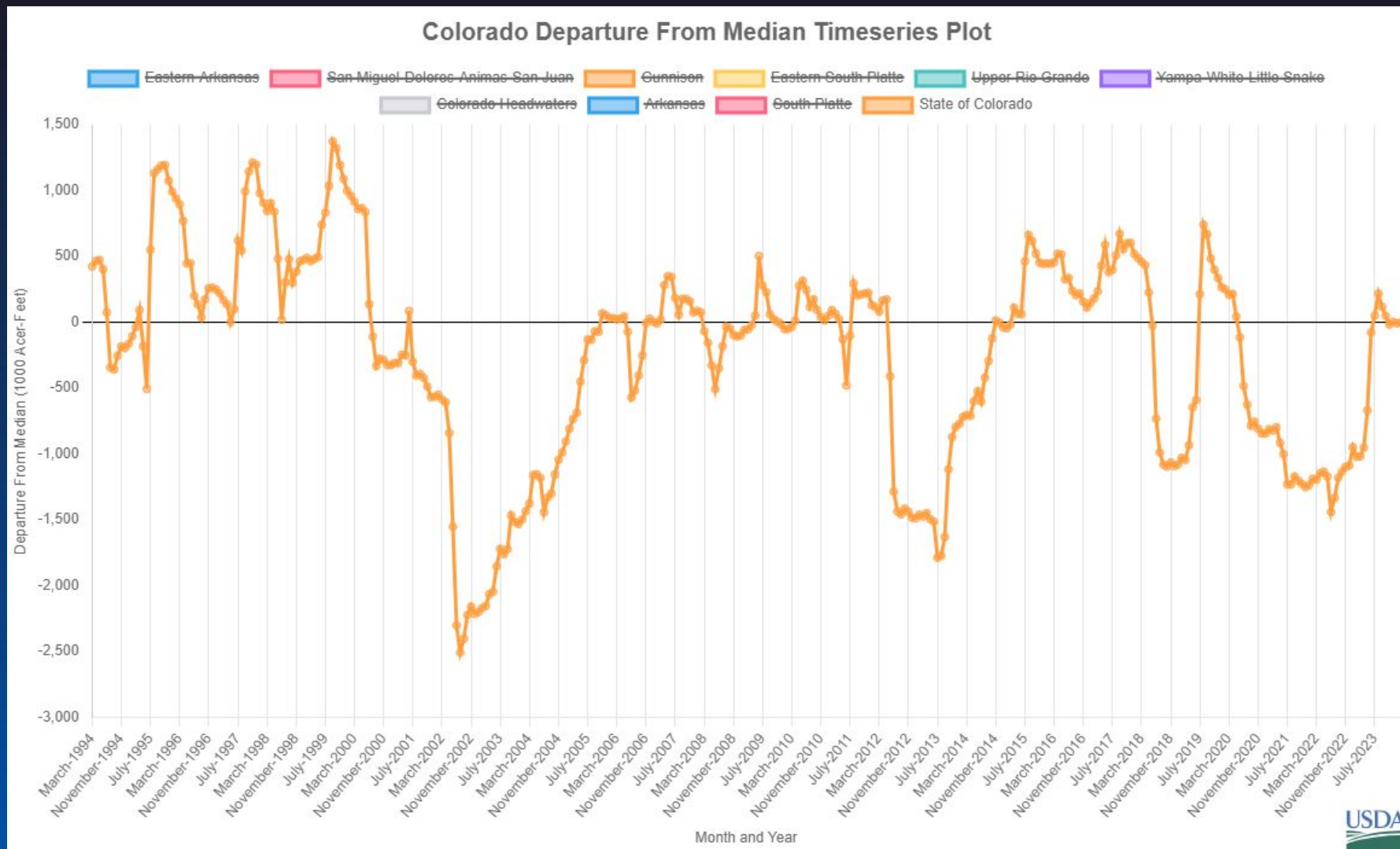
- Max
- Median ('91-'20)
- Min
- Stats. Shading
- 2024 (21 sites)
- 2022 (21 sites)
- 2003 (17 sites)



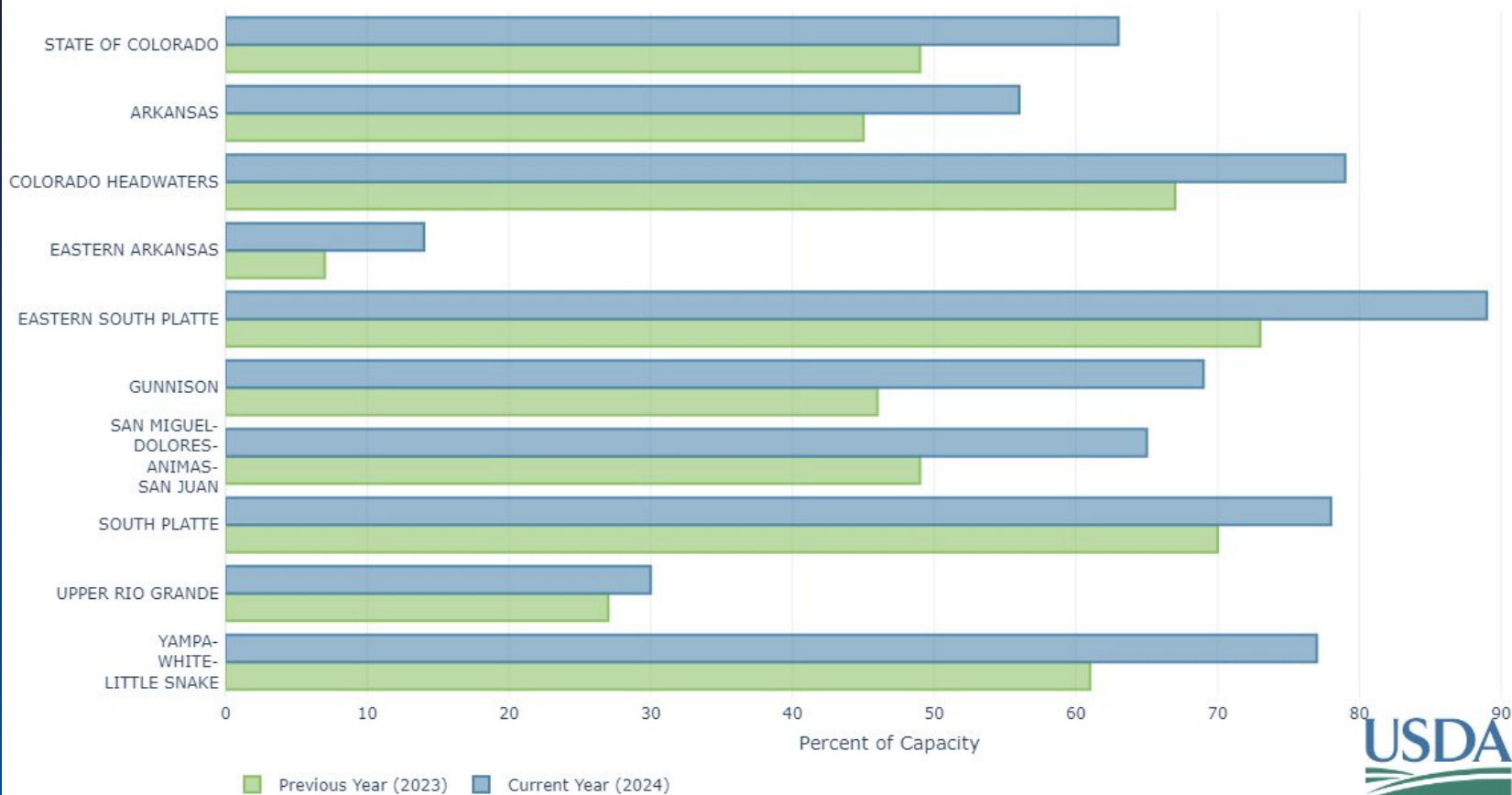




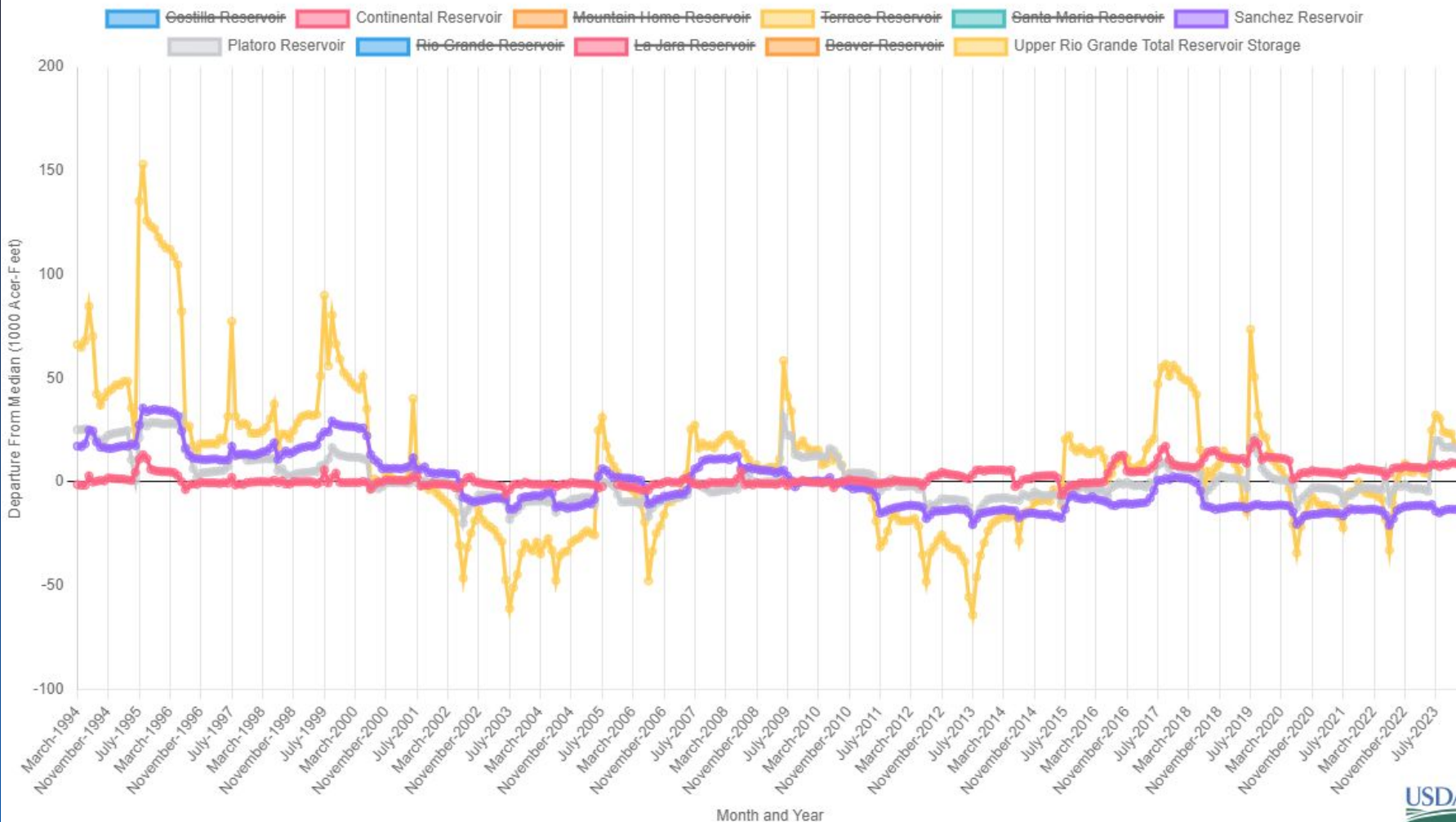




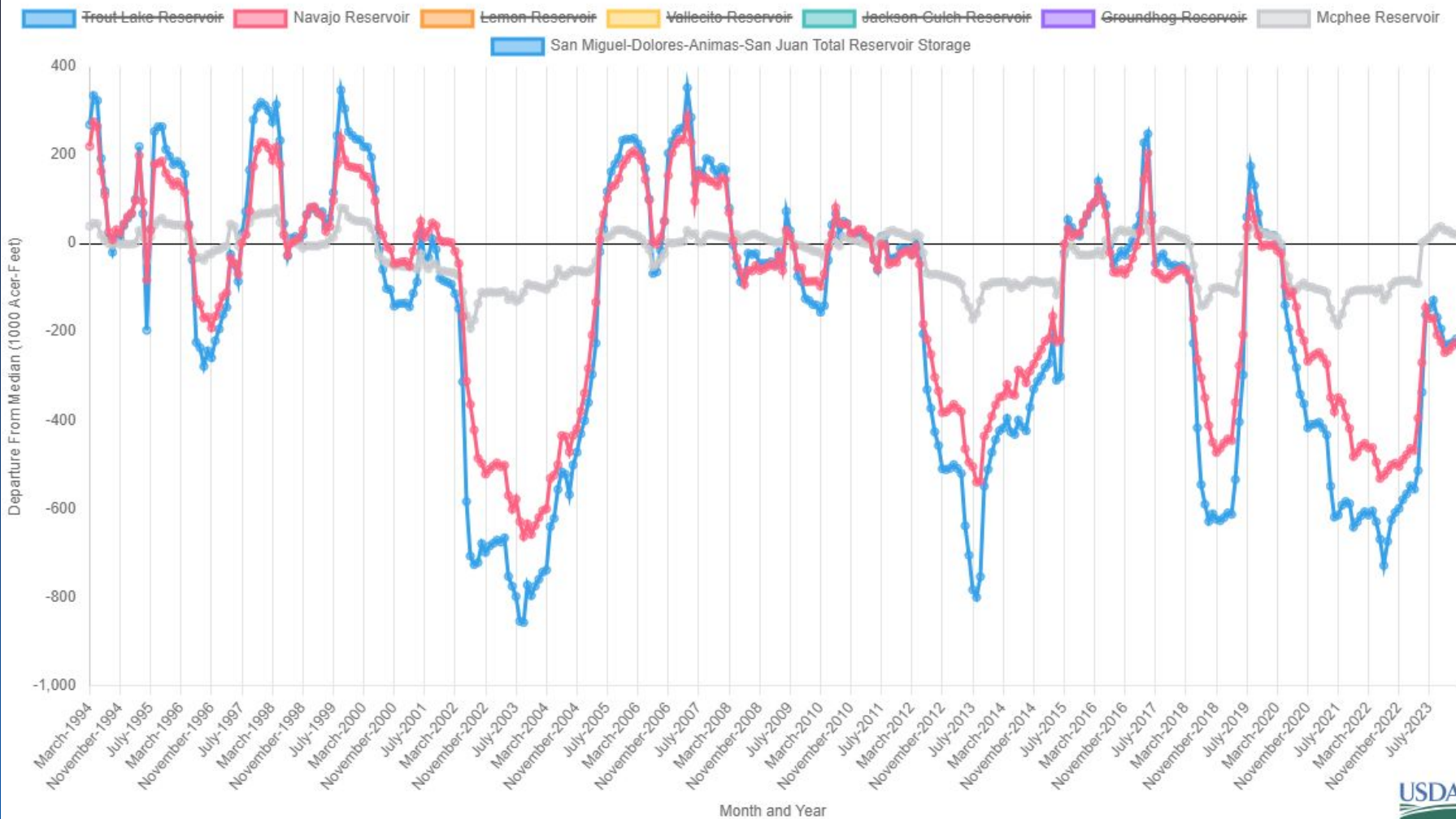
RESERVOIR STORAGE IN COLORADO
END OF FEBRUARY 2024

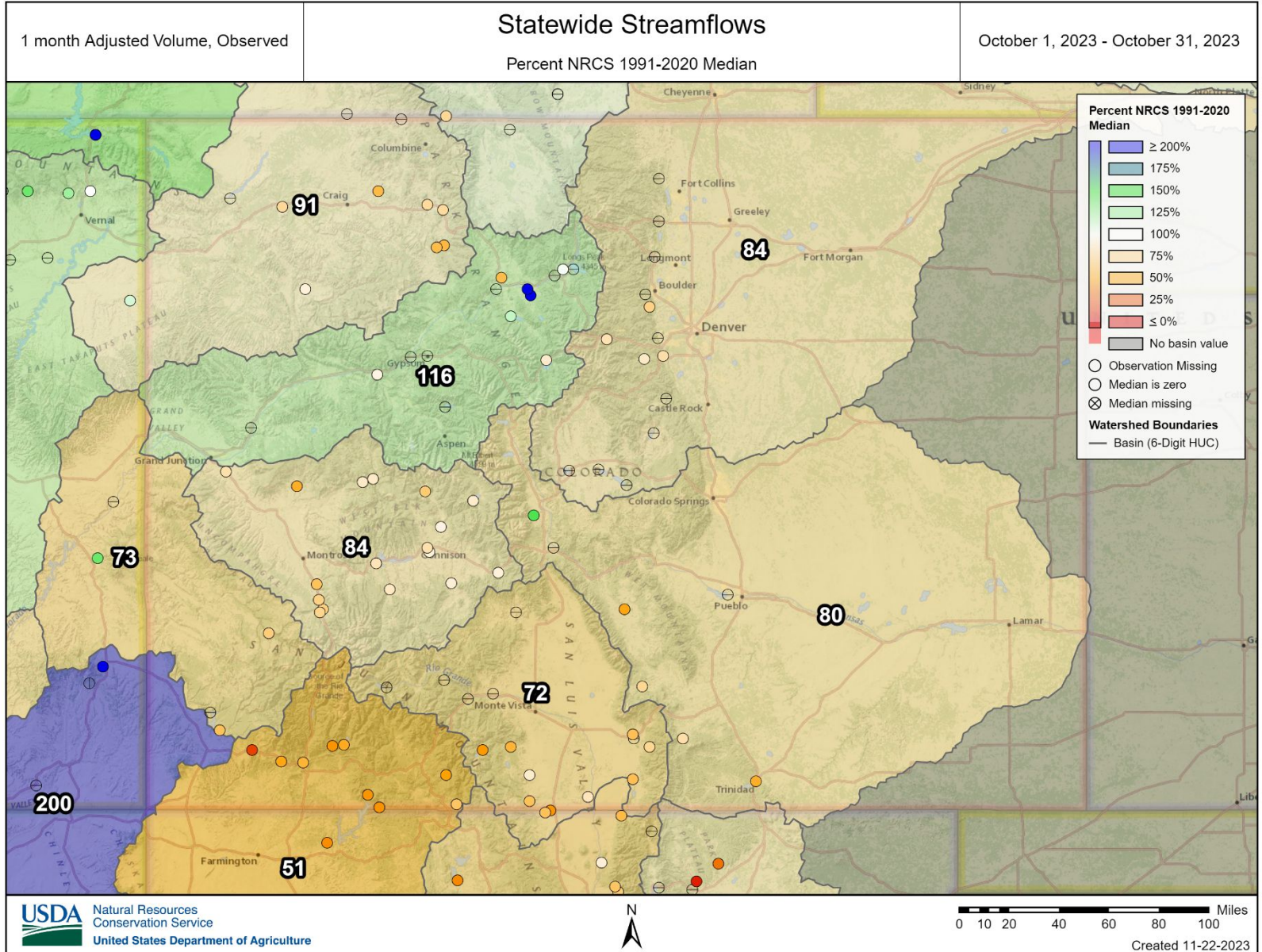


Upper Rio Grande Departure From Median Timeseries Plot



San Miguel-Dolores-Animas-San Juan Departure From Median Timeseries Plot



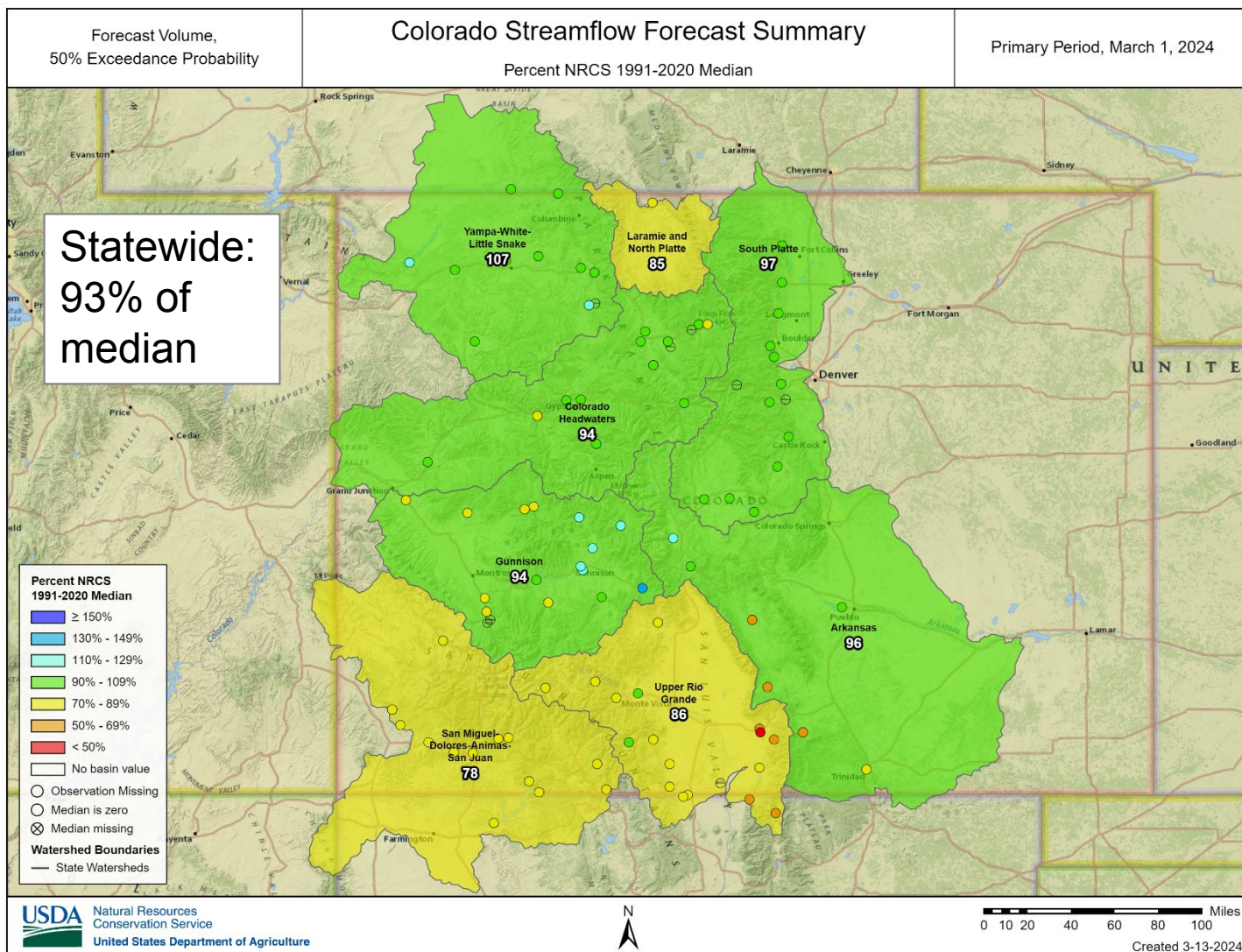




United States Department of Agriculture

Colorado Snow Surveys

Streamflow Forecasts



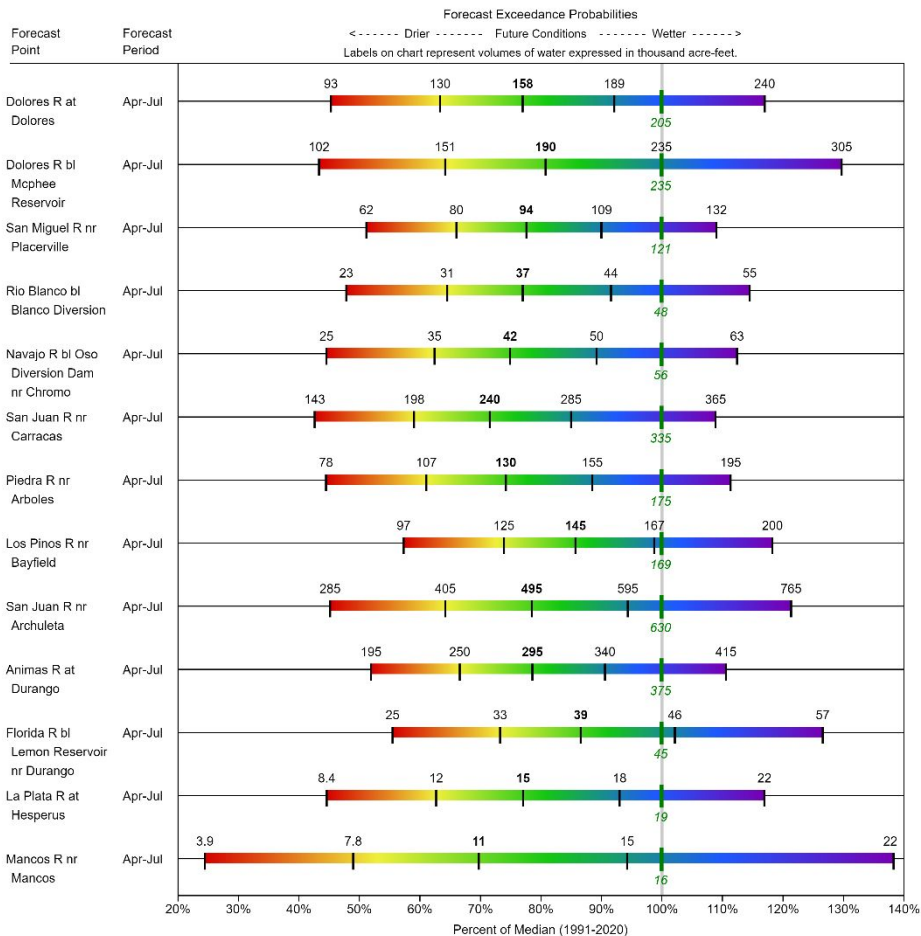


United States Department of Agriculture

Colorado Snow Surveys

Streamflow Forecasts

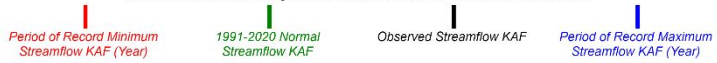
SAN MIGUEL-DOLORES-ANIMAS-SAN JUAN Water Supply Forecasts March 1, 2024



Legend

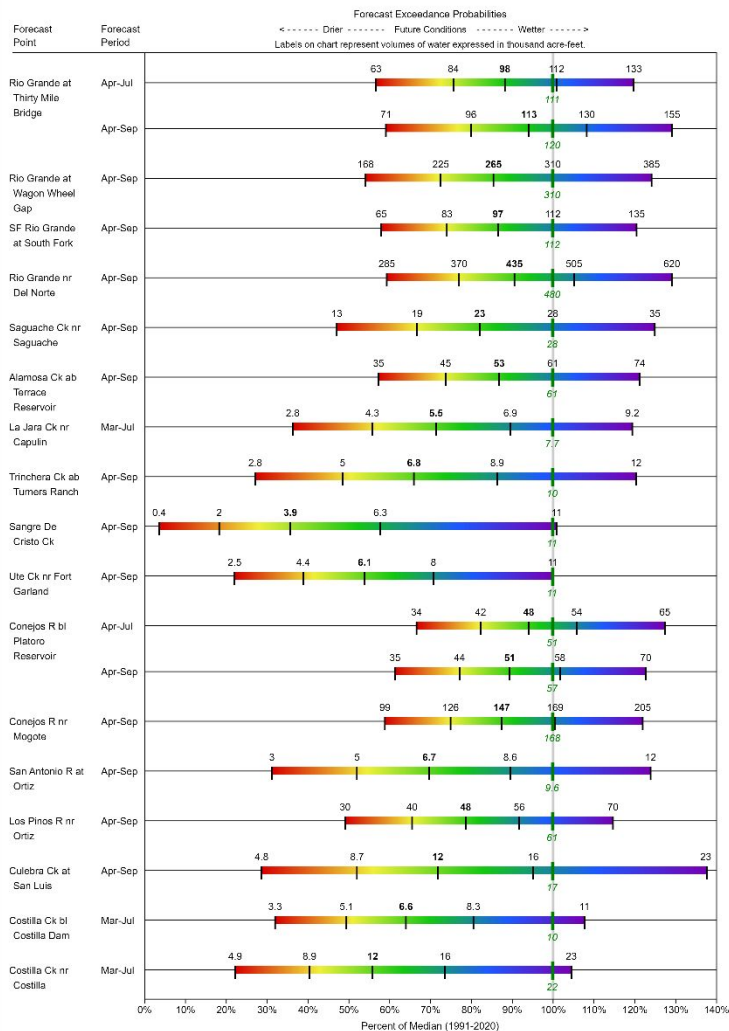


When selected, the following historic streamflow values and statistics will be shown.



Some forecasts may be for volumes that are regulated or influenced by diversions and water management.

UPPER RIO GRANDE Water Supply Forecasts March 1, 2024



Legend



When selected, the following historic streamflow values and statistics will be shown.



Some forecasts may be for volumes that are regulated or influenced by diversions and water management.

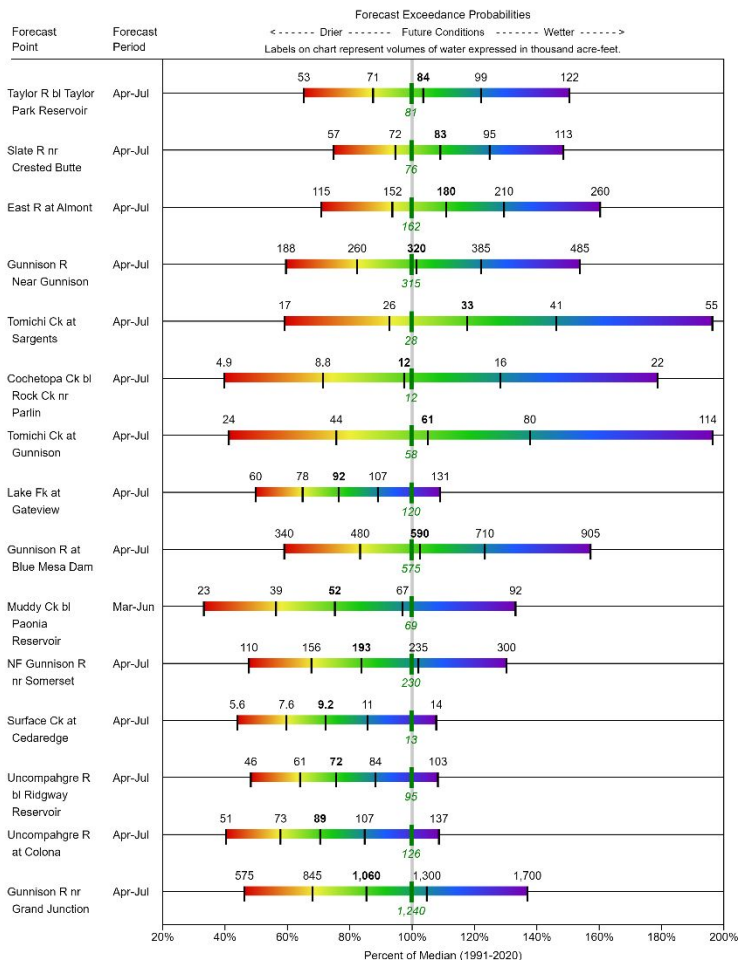


United States Department of Agriculture

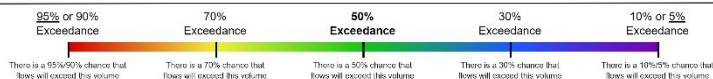
Colorado Snow Surveys

Streamflow Forecasts

GUNNISON Water Supply Forecasts February 1, 2024



Legend

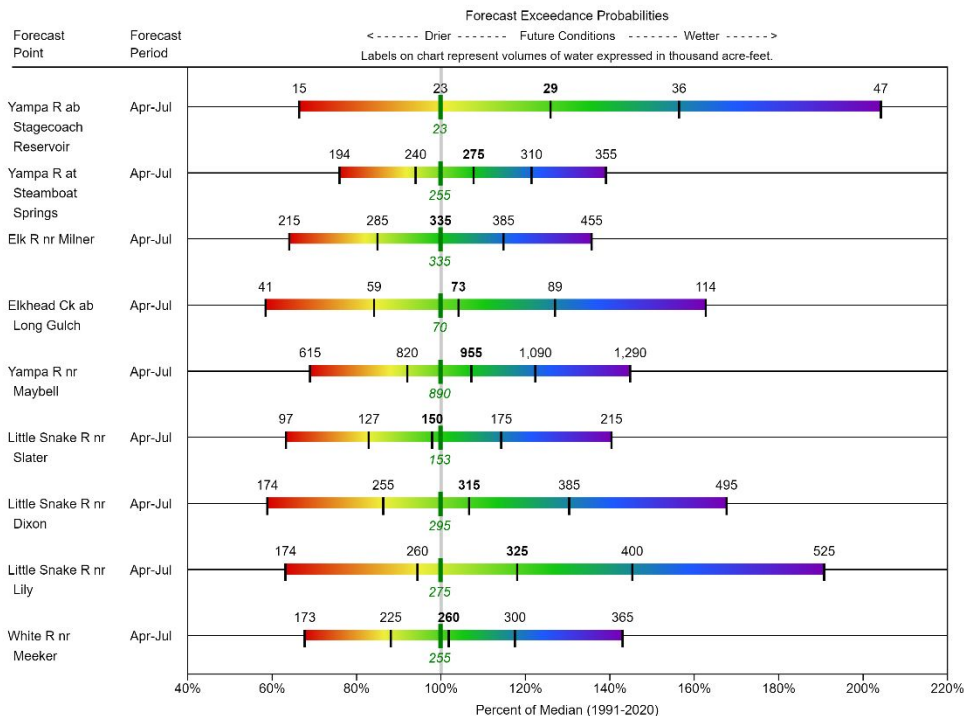


When selected, the following historic streamflow values and statistics will be shown.

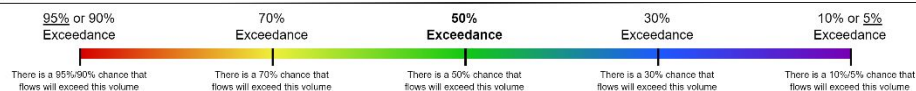


Some forecasts may be for volumes that are regulated or influenced by diversions and water management.

YAMPA-WHITE-LITTLE SNAKE Water Supply Forecasts March 1, 2024



Legend



When selected, the following historic streamflow values and statistics will be shown.



Some forecasts may be for volumes that are regulated or influenced by diversions and water management.

Summary

- Statewide snowpack is 109% of median.
 - Lowest basin is the Upper Rio Grande @ 101%
 - Highest basins are
 - South Platte @114%
 - Combined Yampa-White-N. Platte 113%
- A 13% increase since last month's presentation.
- Recent storms in late February, early March and last weeks storm have exceeded expectations providing a boost and potential to mitigate the pre-existing deficit.
- In a normal year, by 3/19 CO has typically accumulated about 89% of its median annual peak snowpack
- Statewide reservoir storage is 100% of median
- Statewide precipitation is 103% of median. Ranging from 92% in the SMDASJ to 113% in the Arkansas.



Non-Discrimination Statement:

In accordance with Federal civil rights law and U.S. Department of agriculture (USDA) civil rights regulations and policies, the USDA, its Agencies, offices, and employees, and institutions participating in or administering USDA programs are prohibited from discriminating based on race, color, national origin, religion, sex, gender identity (including gender expression), sexual orientation, disability, age, marital status, family/parental status, income derived from a public assistance program, political beliefs, or reprisal or retaliation for prior civil rights activity, in any program or activity conducted or funded by USDA (not all bases apply to all programs). Remedies and complaint filing deadlines vary by program or incident.

Persons with disabilities who require alternative means of communication for program information (e.g., Braille, large print, audiotape, American Sign Language, etc.) should contact the responsible Agency or USDA 's TARGET Center at (202) 720-2600 (voice and TTY) or contact USDA through the Federal Relay Service at (800) 877-8339. Additionally, program information may be made available in languages other than English.

To file a program discrimination complaint, complete the USDA Program Discrimination Complaint Form, AD-3027, found online at [How to File a Program Discrimination Complaint](#) and at any USDA office or write a letter addressed to USDA and provide in the letter all of the information requested in the form. To request a copy of the complaint form, call [866] 632-9992. Submit your completed form or letter to USDA by: (1) mail: U.S. Department of Agriculture, Office of the Assistant Secretary for Civil Rights, 1400 Independence Avenue, SW, Washington, D.C. 20250-9410; (2) fax: (202) 690-7442; or (3) email: program.intake@usda.gov.



United States Department of Agriculture

Colorado Snow Surveys

Water Conditions Monitoring Committee Meeting March 19th, 2024

NRCS Snow Survey and Water Supply Forecasting Program

Nagam Gill

Hydrologist

Nagam.gill@usda.gov

720-576-7863

<http://www.nrcs.usda.gov/wps/portal/nrcs/main/co/snow/>