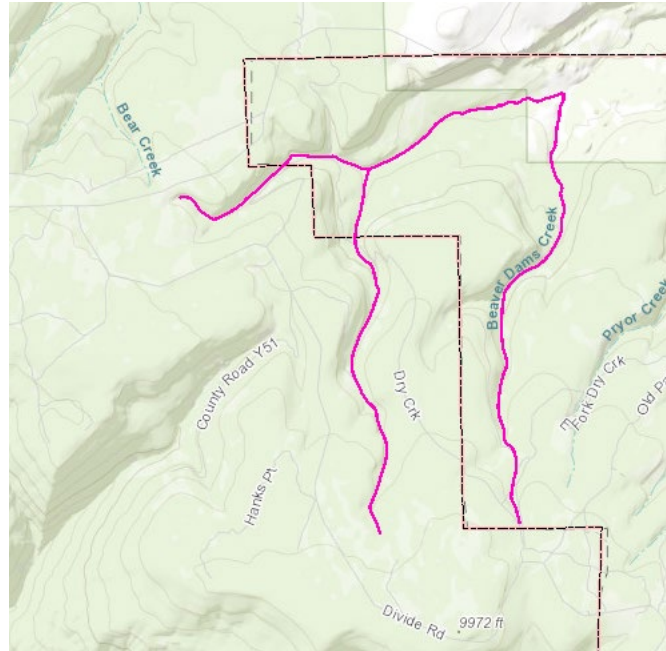


Preliminary Instream Flow Recommendations for East Fork Dry Creek in Water Division 4, Ouray County to be presented at the January 2025 CWCB Meeting

Recommended Segments & Land Status

CPW is proposing an ISF recommendation on East Fork (EF) Dry Creek from the headwaters (located at UTM 12S 225416.86 4245723.89) to the confluence with Beaver Dams Creek (located at UTM 12S 229778.94 4246758.01). The reach is approximately 3.1 miles in length. The proposed reach is mainly on public lands managed under the Uncompahgre National Forest. There is a private land ownership toward the lower terminus of the proposed ISF reach.



Natural Environment and Biological Summary

EF Dry Creek is a first order headwaters creek which supports a self-sustaining population of Colorado River cutthroat trout of the Gunnison Basin lineage. The creek also supports a healthy riparian area and diverse macroinvertebrate community.

Preliminary R2Cross Results

In 2020 and 2022, CPW and CWCB staff conducted site visits and collected R2Cross datasets on EF Dry Creek. Datasets from 2020 were not included in preliminary flow recommendations also because it was an extremely dry year and streamflow was too low for an accurate flow measurement. The preliminary results of the R2Cross analysis are summarized below using average data from 2022.

	Bankfull Top Width	Date Measured	Flow Measured	Flow Meeting Two Criteria	Flow Meeting Three Criteria
3	14.48 ft	5/26/2022	1.49 cfs	1.84 cfs	2.54 cfs
Recommended Flow Rates:				1.84 cfs	2.54 cfs

The preliminary biological flow recommendation during the baseflow period is 1.84 cfs. The preliminary biological flow recommendation in the summer is 2.54 cfs.

Water Availability

There is no gage data on EF Dry Creek. CPW and CWCB staff will use regression estimates to make a determination whether water is available to meet the preliminary biological flow recommendations.