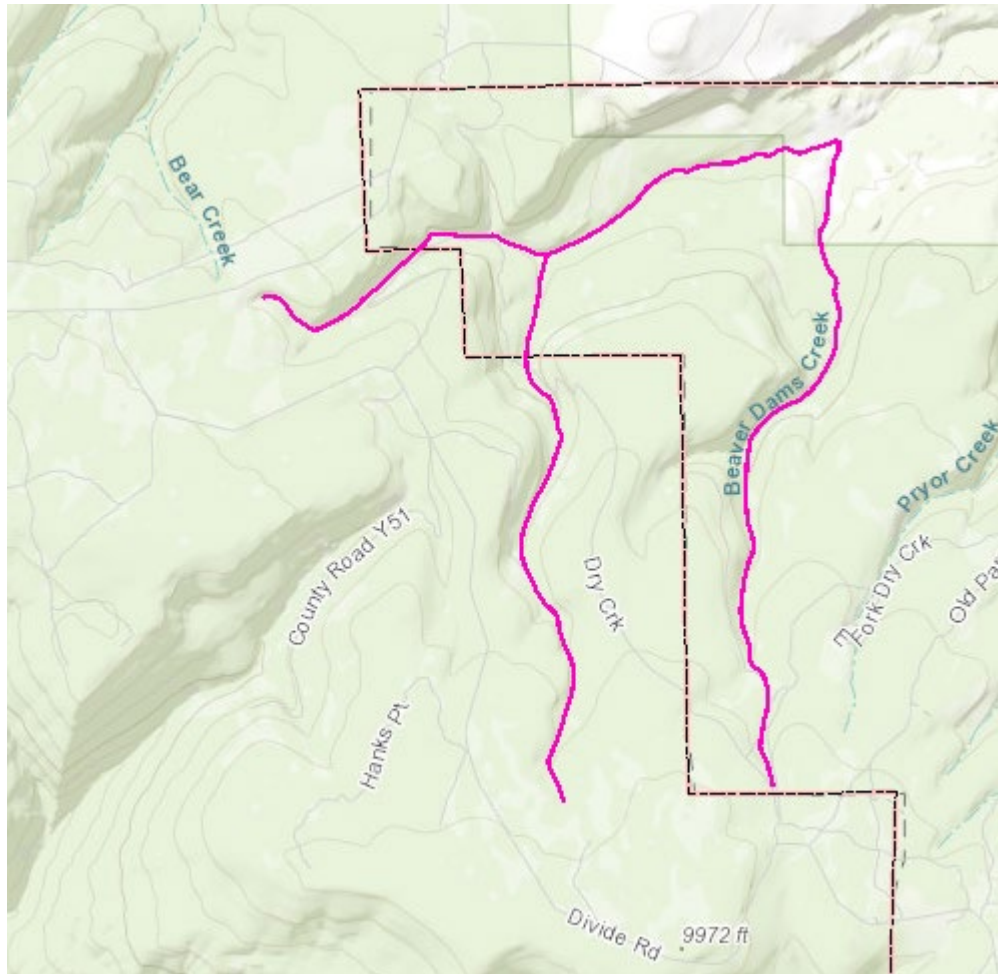


Preliminary Instream Flow Recommendations for Beaver Dams Creek in Water Division 4, Ouray County to be presented at the January 2025 CWCB Meeting

Recommended Segments & Land Status

CPW is proposing an ISF recommendation on Beaver Dams Creek from the headwaters (located at UTM 12S 229120.87 4241934.00) to the confluence with East Fork Dry Creek (located at UTM 12S 229778.94 4246758.01). The reach is approximately 3.3 miles in length. The proposed reach is mainly on public lands managed under the Uncompahgre National Forest. The ISF reach does pass through a private land inholding near the confluence with East Fork Dry Creek.



Natural Environment and Biological Summary

Beaver Dams Creek is a first order headwaters creek which supports a self-sustaining population of Colorado River cutthroat trout of the Gunnison Basin lineage. The creek also supports a healthy riparian area and diverse macroinvertebrate community.

Preliminary R2Cross Results

In 2022, CPW and CWCB staff collected two cross-section data sets on Beaver Dams Creek near the USFS boundary. The preliminary results of the R2Cross analysis are summarized below.

	Bankfull Top Width	Date Measured	Flow Measured	Flow Meeting Two Criteria	Flow Meeting Three Criteria
1	7.89 ft	5/25/2022	1.88 cfs	0.39 cfs	2.10 cfs
2	10.08 ft	5/25/2022	1.88 cfs	0.59 cfs	3.50 cfs
Recommended Flow Rates:				0.49 cfs	2.80 cfs

The preliminary biological flow recommendation during the baseflow period is 0.49 cfs. The preliminary biological flow recommendation in the summer is 2.80 cfs.

Water Availability

There is no gage data on Beaver Dams Creek. CPW and CWCB staff will use regression estimates to make a determination whether water is available to meet the preliminary biological flow recommendations.

