



United States Department of Agriculture

Colorado Snow Surveys

Water Conditions Monitoring Committee Meeting February 20th, 2024

NRCS Snow Survey and Water Supply Forecasting Program

Brian Domonkos

Hydrologist

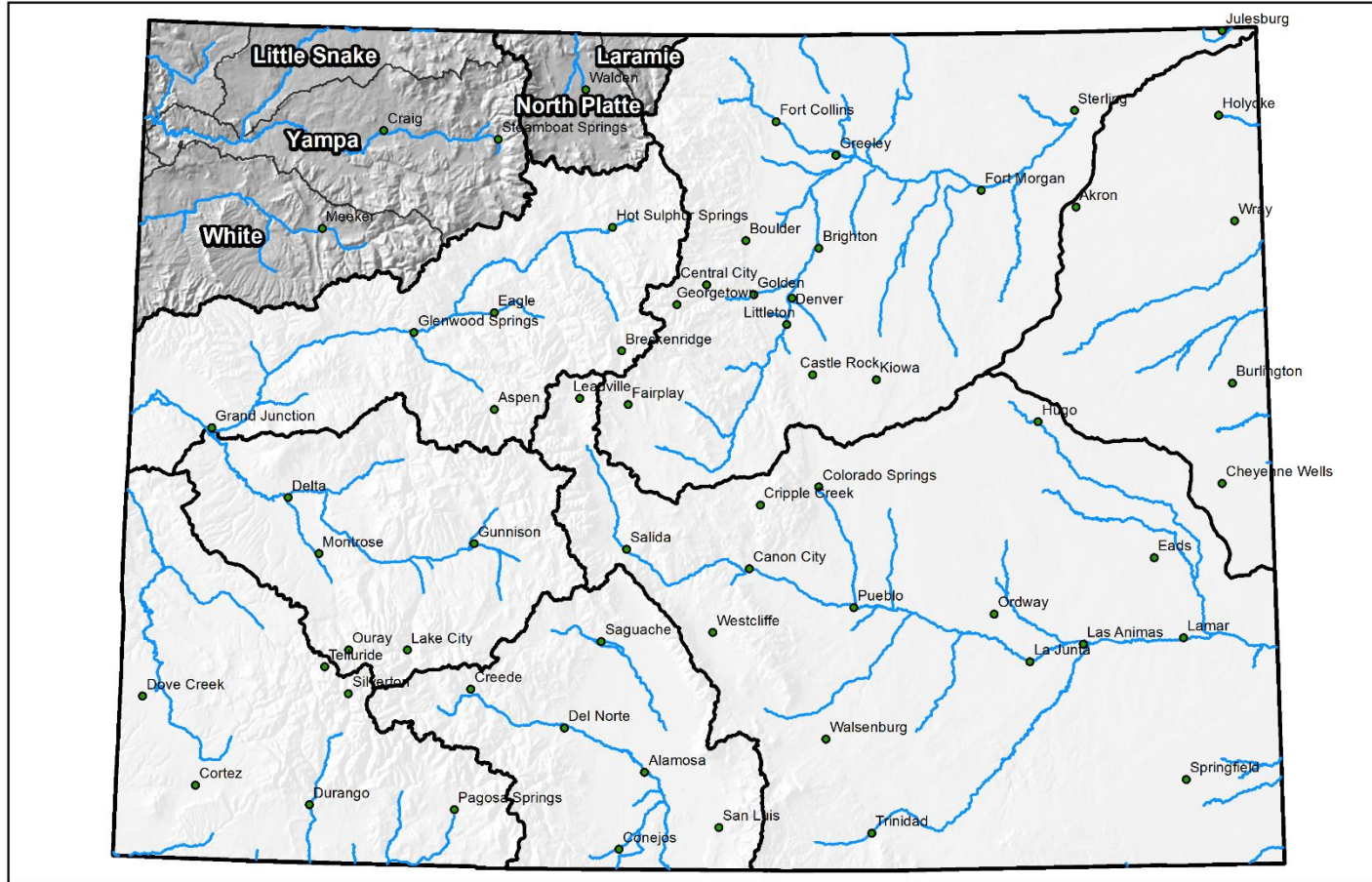
Brian.Domonkos@usda.gov

720-544-2853

<http://www.nrcs.usda.gov/wps/portal/nrcs/main/co/snow/>

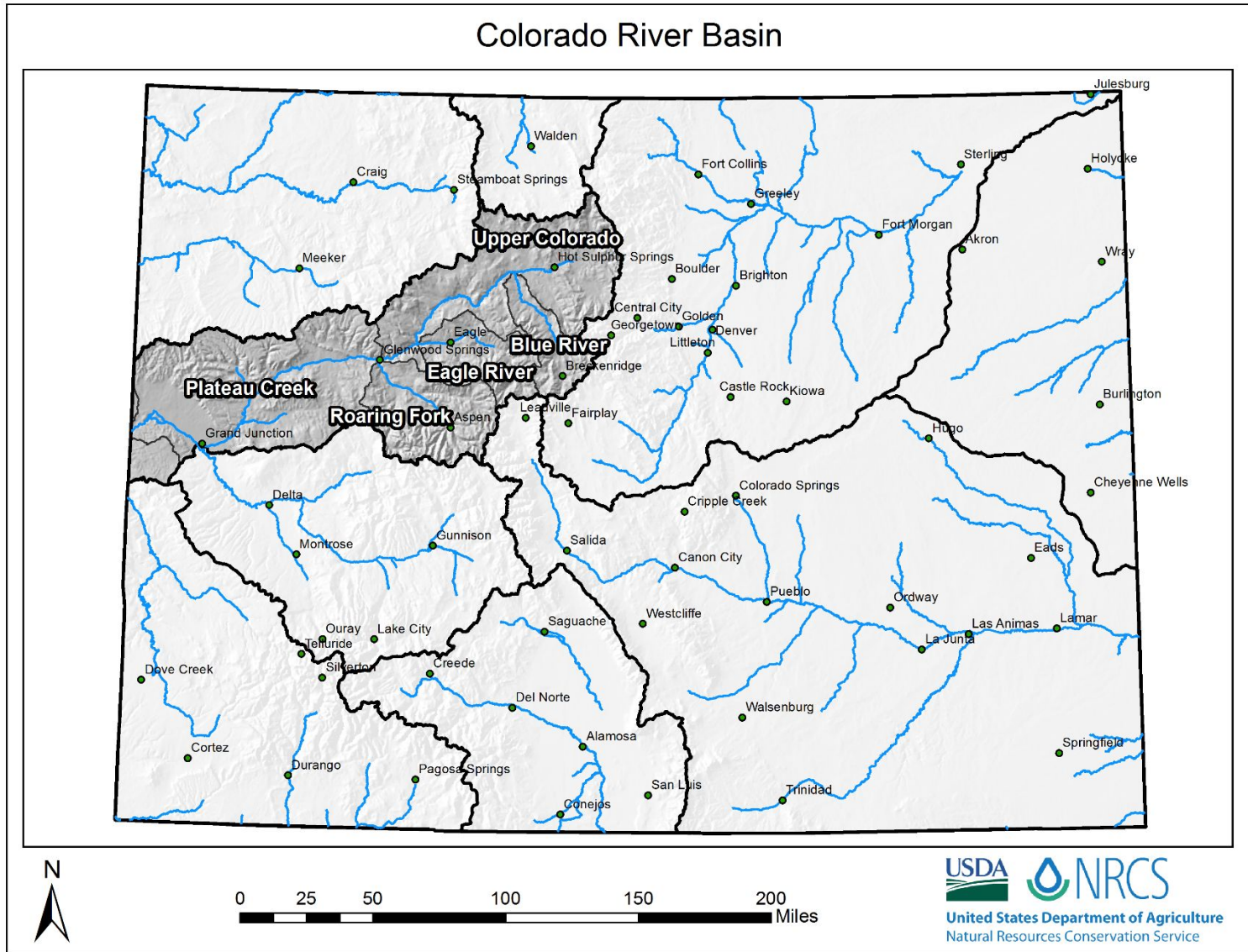
Major Basin Summary

Yampa, White, and North Platte River Basins



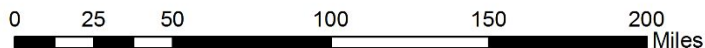
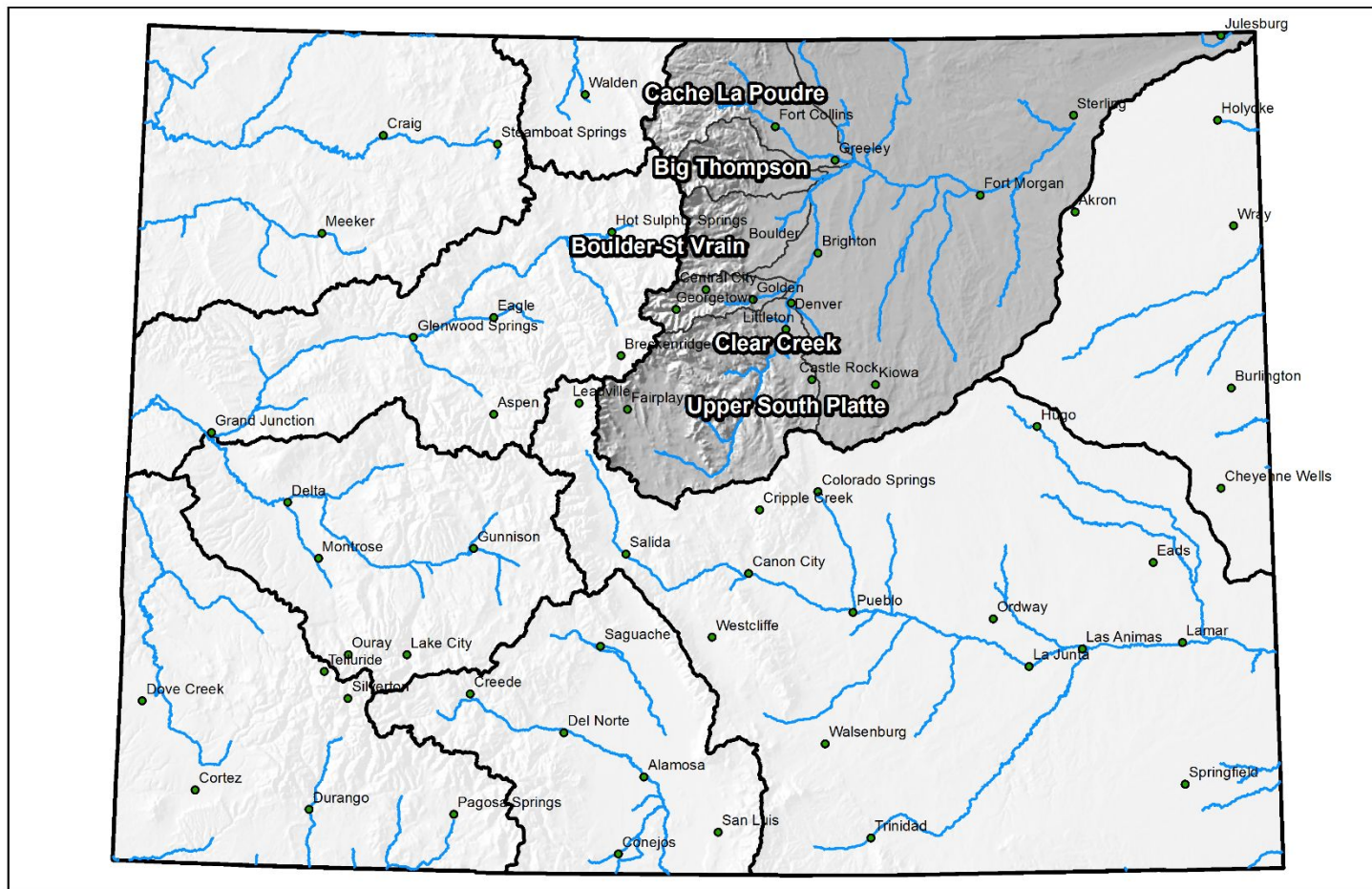
0 25 50 100 150 200 Miles

Major Basin Summary



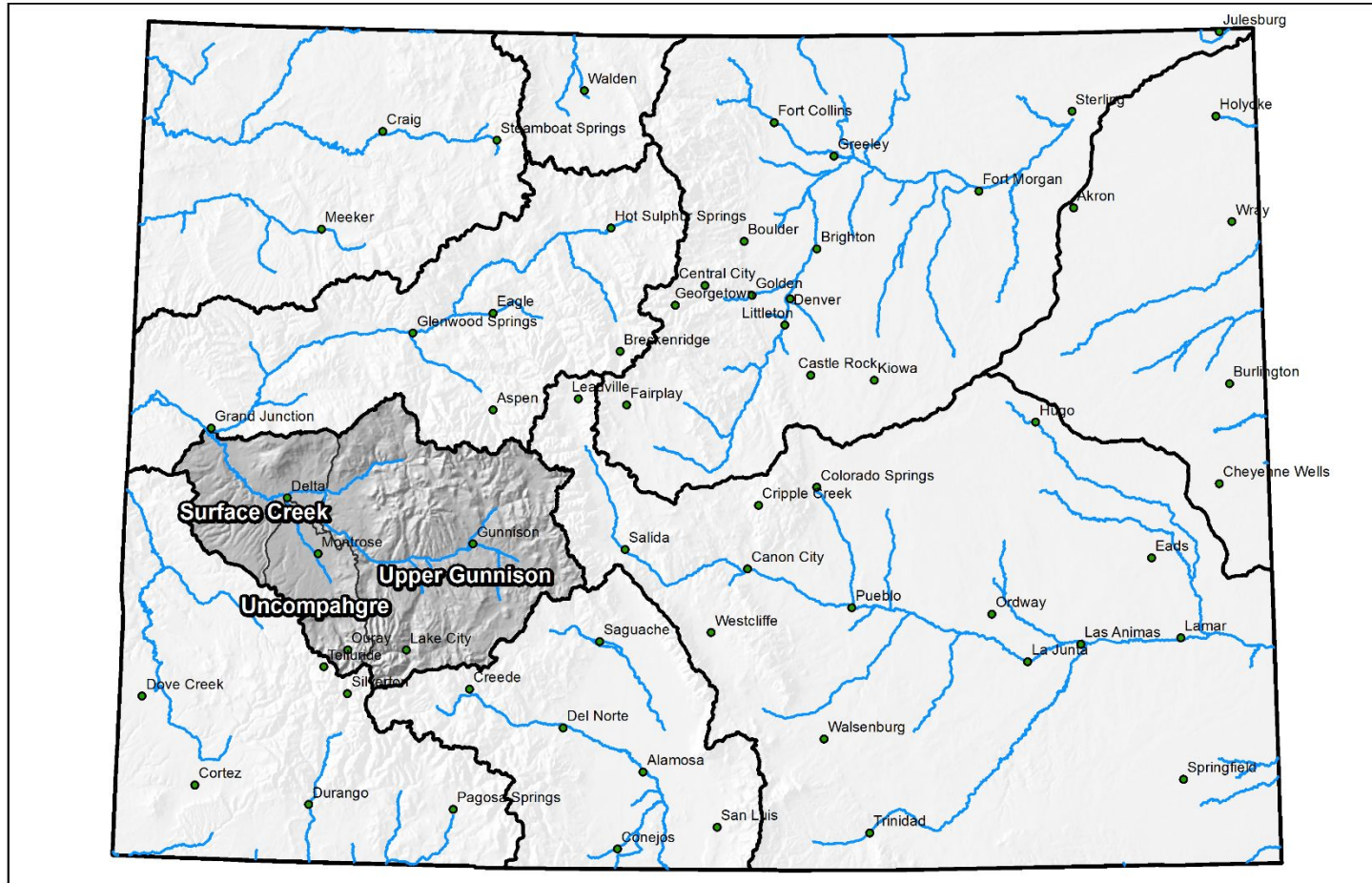
Major Basin Summary

South Platte River Basin



Major Basin Summary

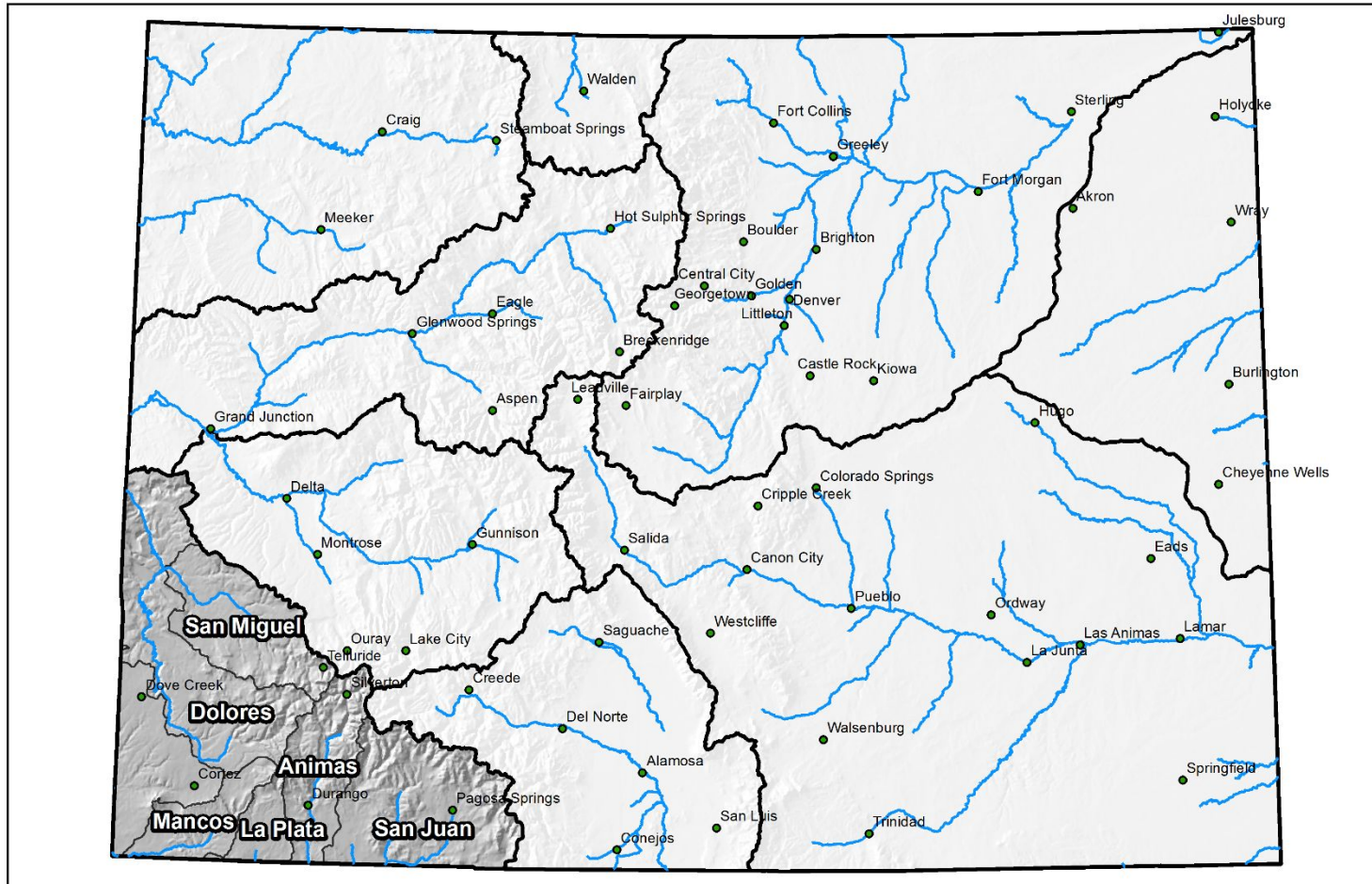
Gunnison River Basin



0 25 50 100 150 200 Miles

Major Basin Summary

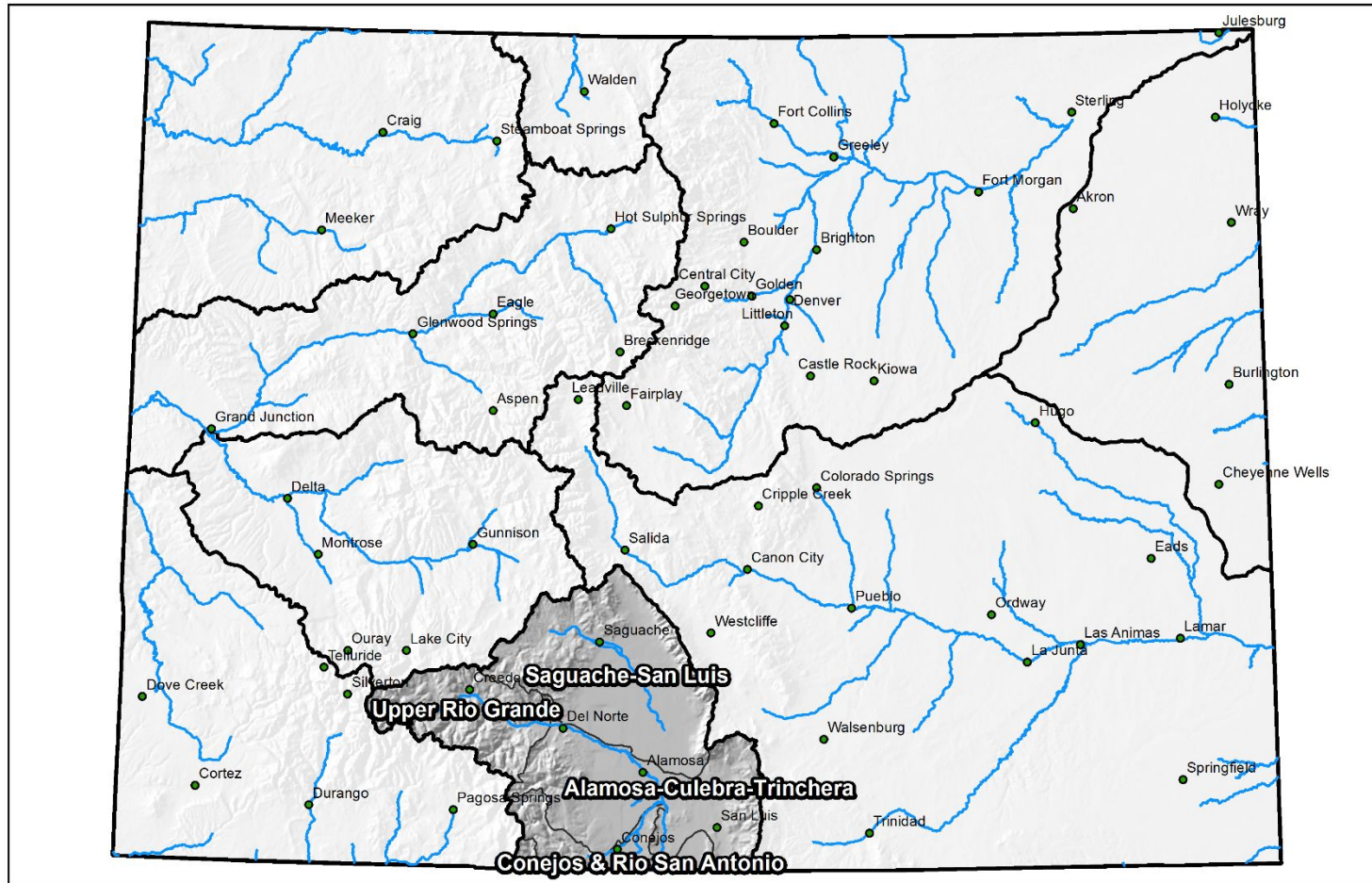
San Miguel, Dolores, Animas, and San Juan River Basins



0 25 50 100 150 200 Miles

Major Basin Summary

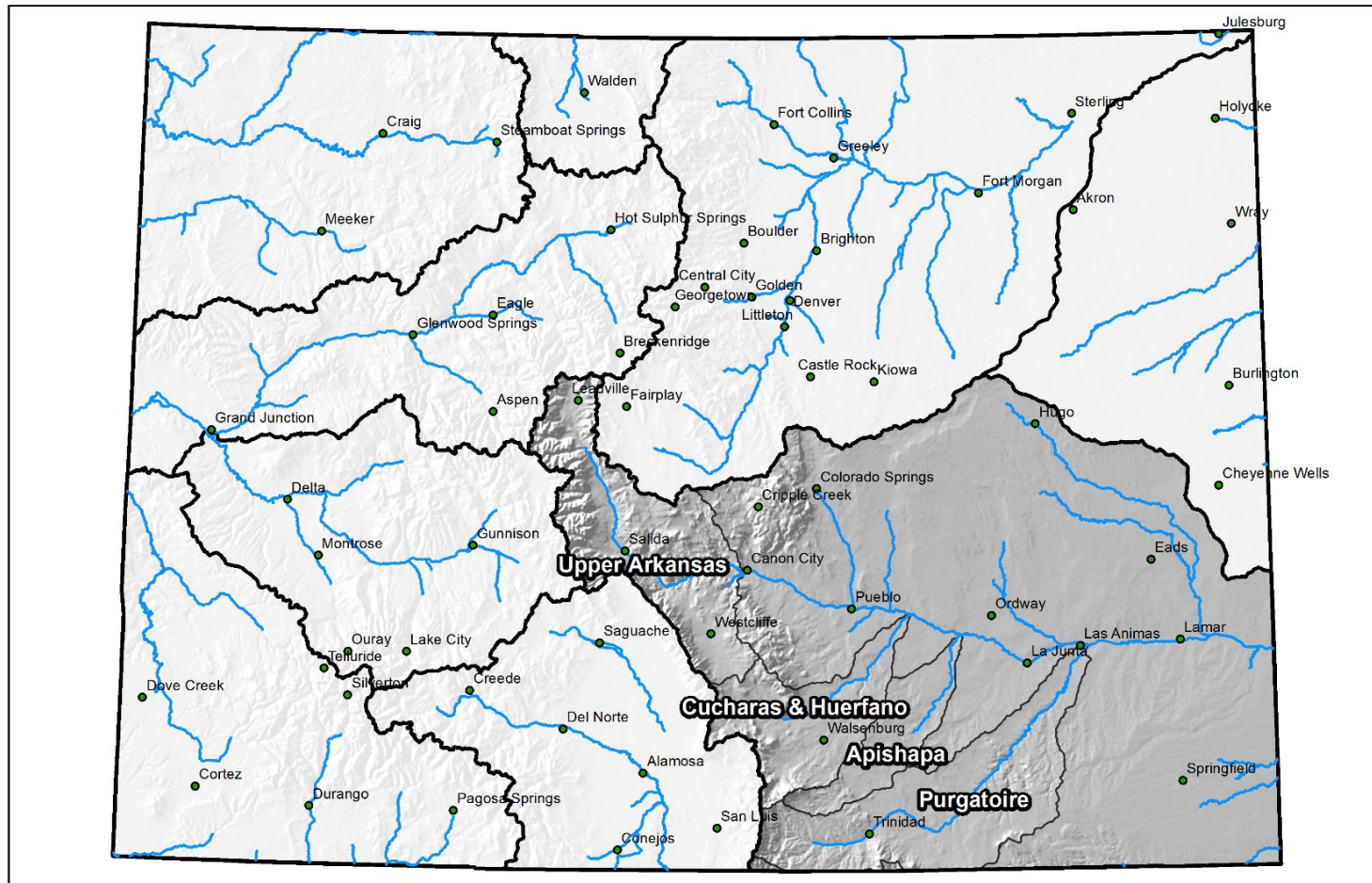
Upper Rio Grande River Basin



0 25 50 100 150 200 Miles

Major Basin Summary

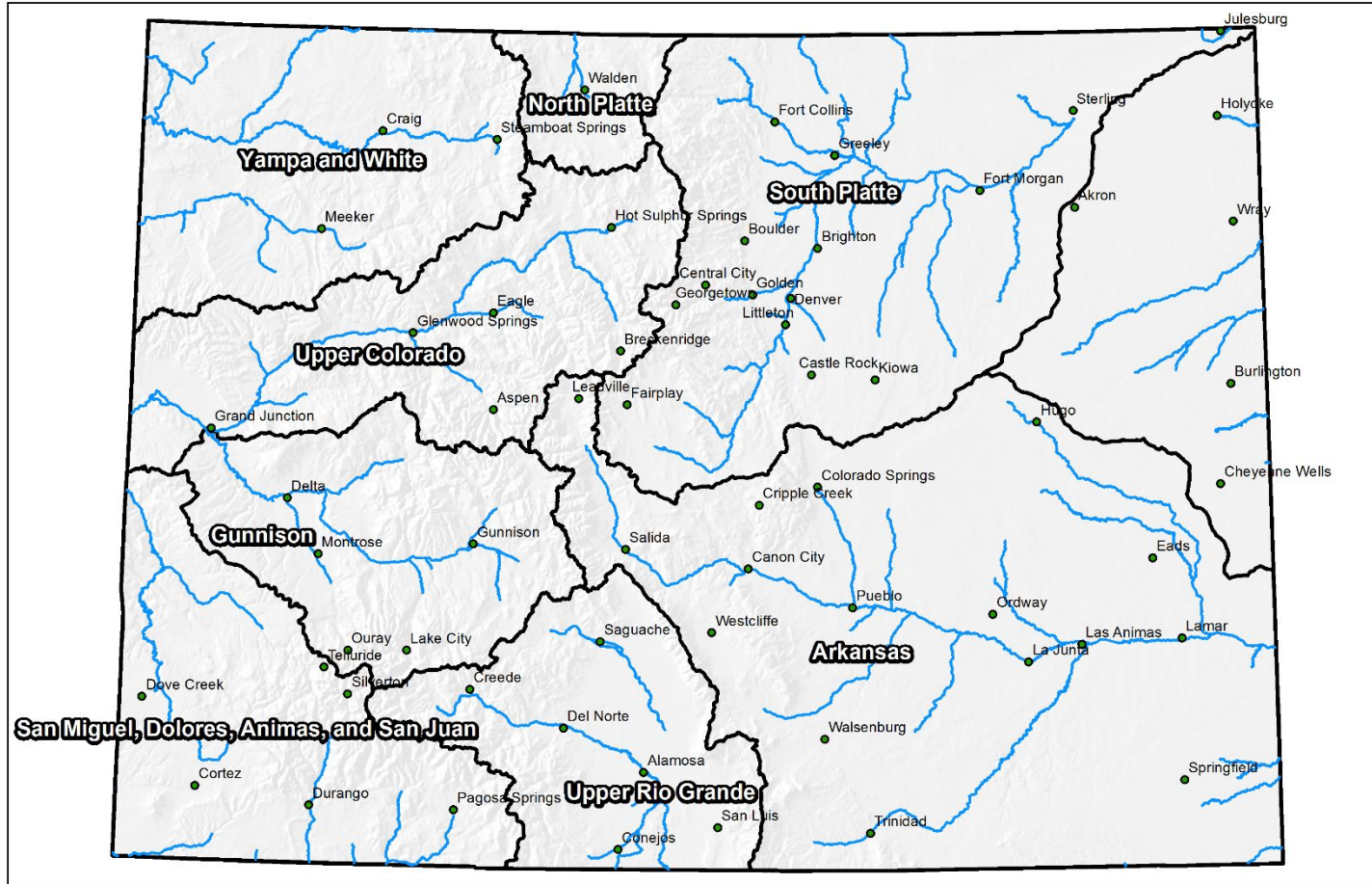
Arkansas River Basin



0 25 50 100 150 200 Miles

Colorado Statewide Summary

Colorado Major Basins



0 25 50 100 150 200 Miles



Colorado Snow Surveys

SNOW WATER EQUIVALENT IN STATE OF COLORADO

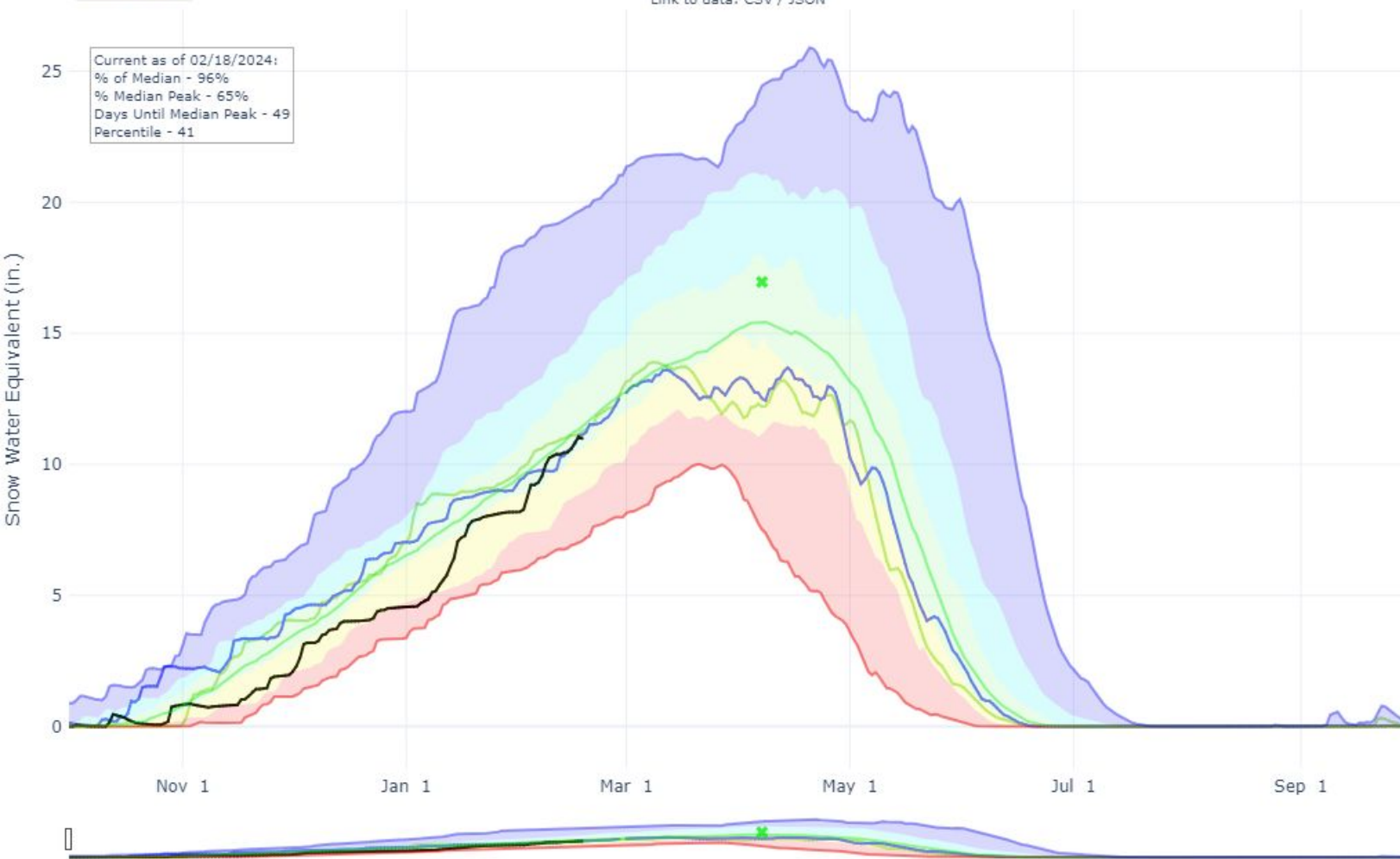
Reset Range

[Link to data: CSV / JSON](#)

Station List

Current as of 02/18/2024:
% of Median - 96%
% Median Peak - 65%
Days Until Median Peak - 49
Percentile - 41

- Median Peak SWE
- Max
- Median ('91-'20)
- Min
- Stats. Shading
- 2024 (115 sites)
- 2007 (102 sites)
- 2004 (96 sites)



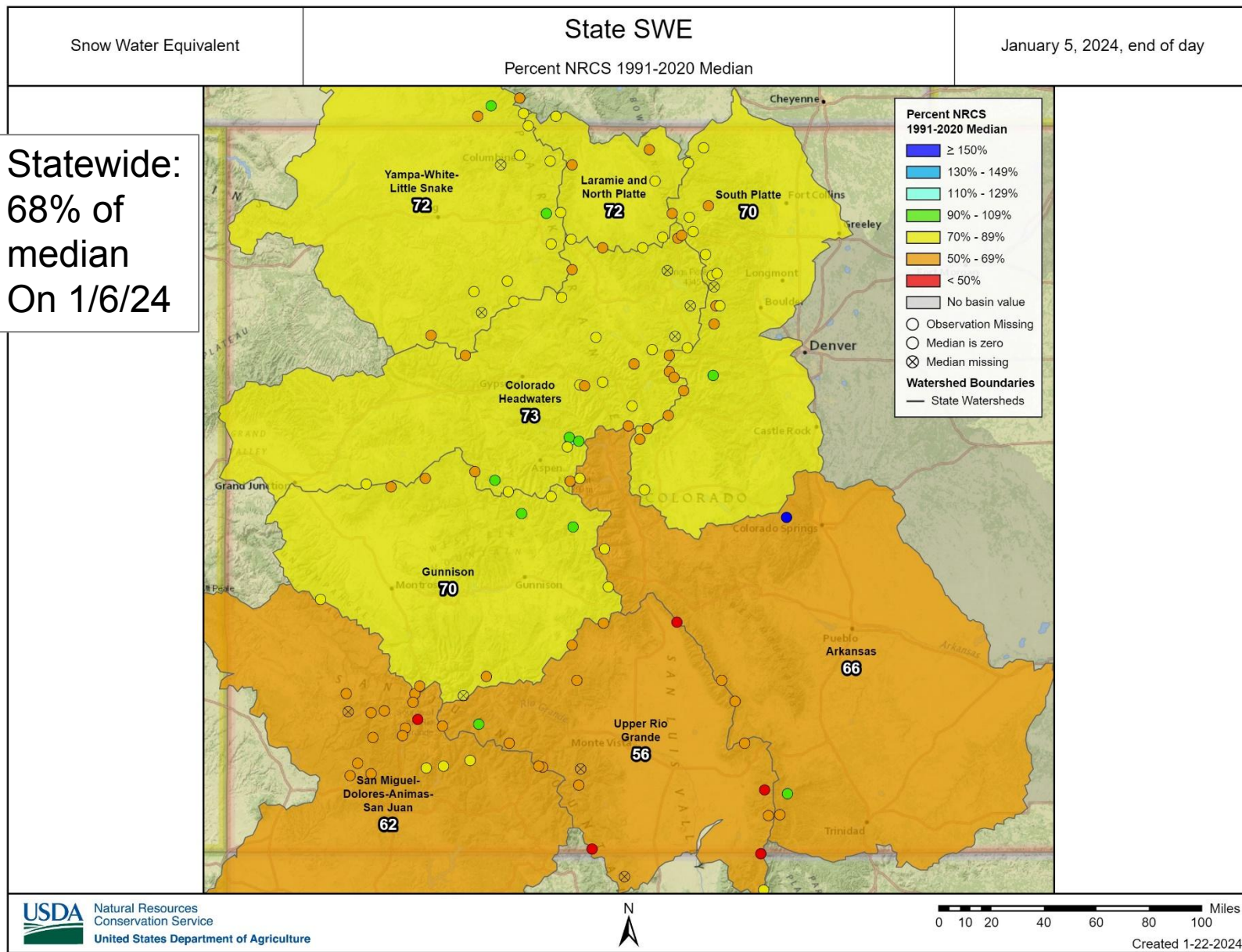


United States Department of Agriculture

Colorado Snow Surveys

Snowpack

Statewide:
68% of
median
On 1/6/24



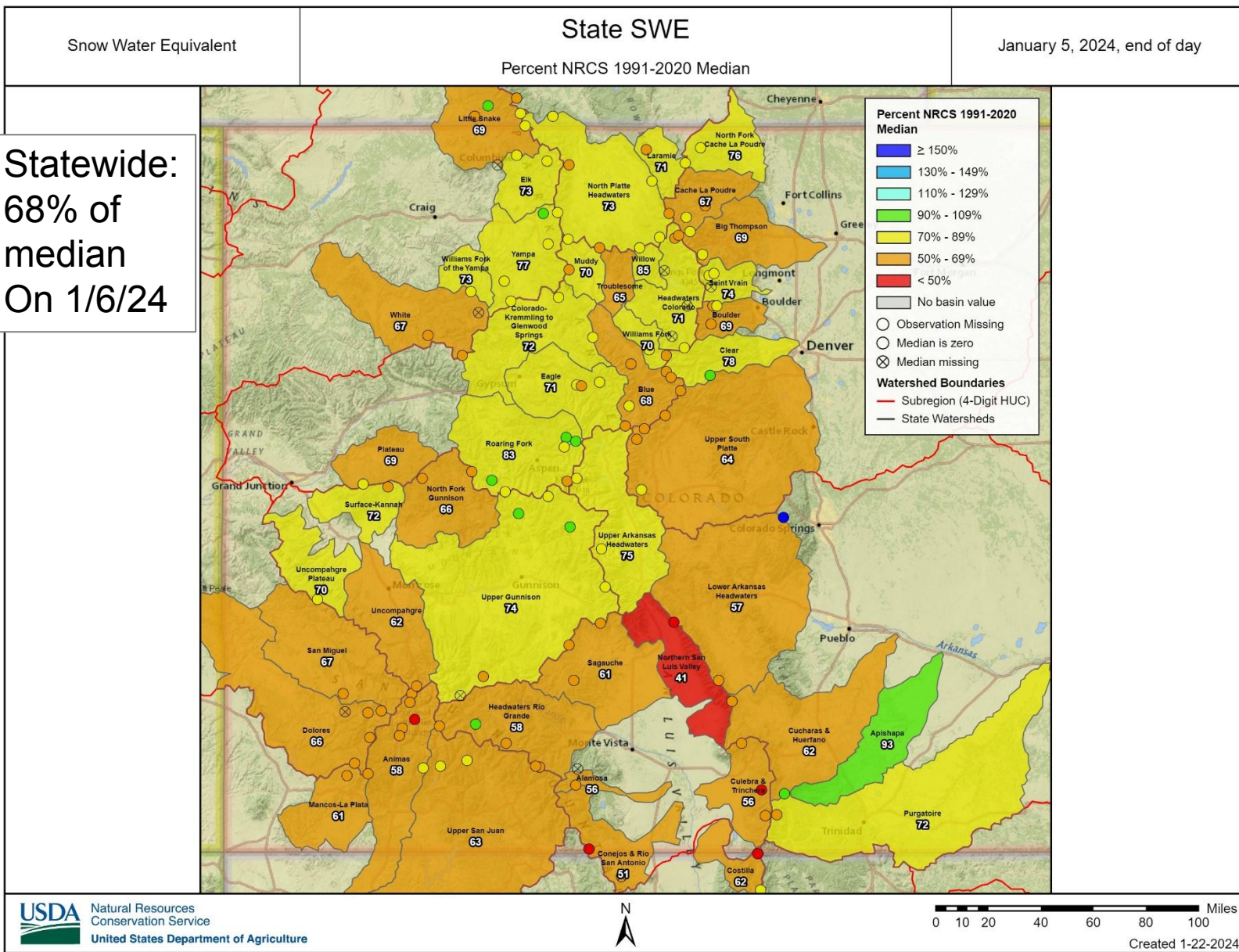


United States Department of Agriculture

Colorado Snow Surveys

Snowpack

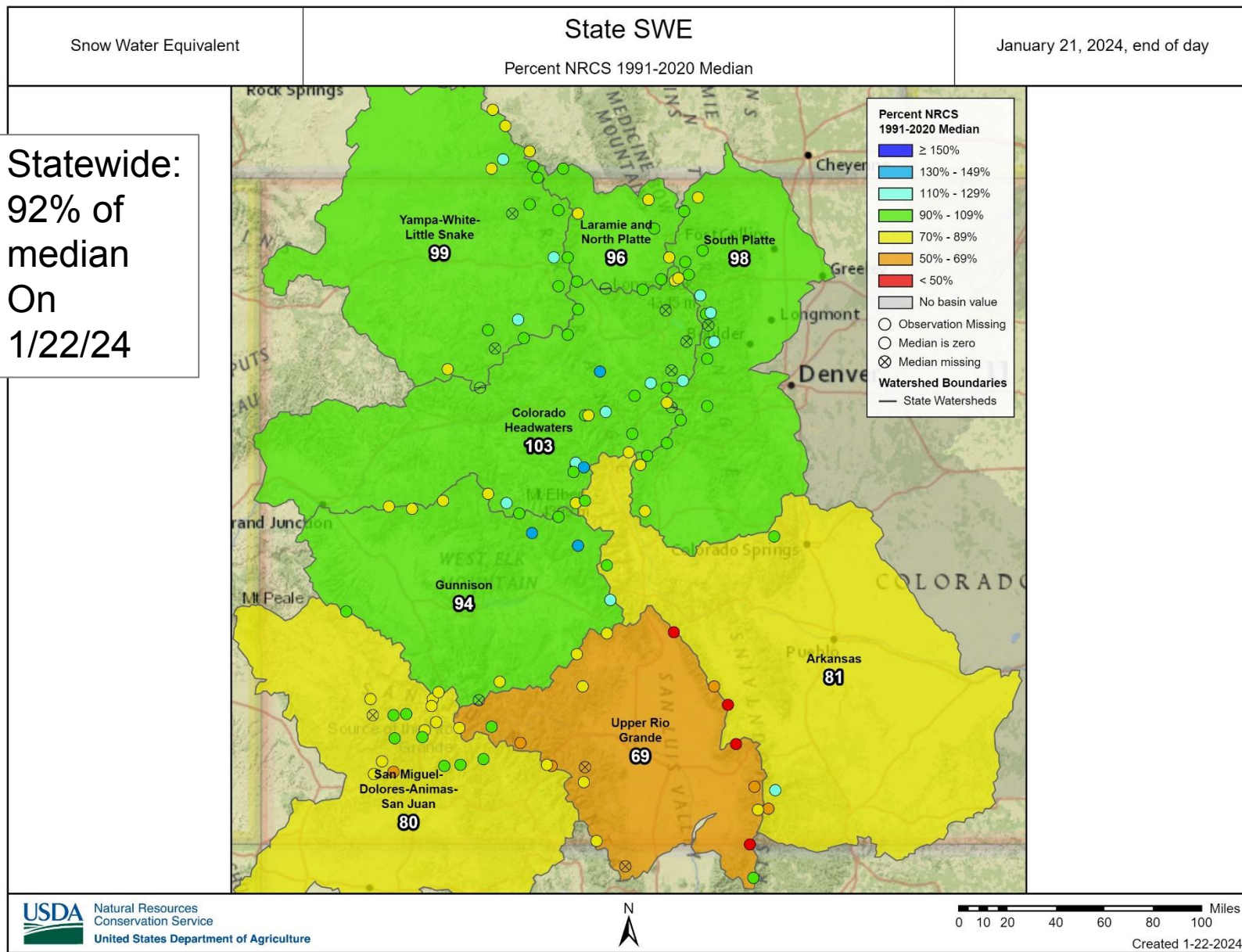
Statewide:
68% of
median
On 1/6/24





Colorado Snow Surveys

Statewide:
92% of
median
On
1/22/24



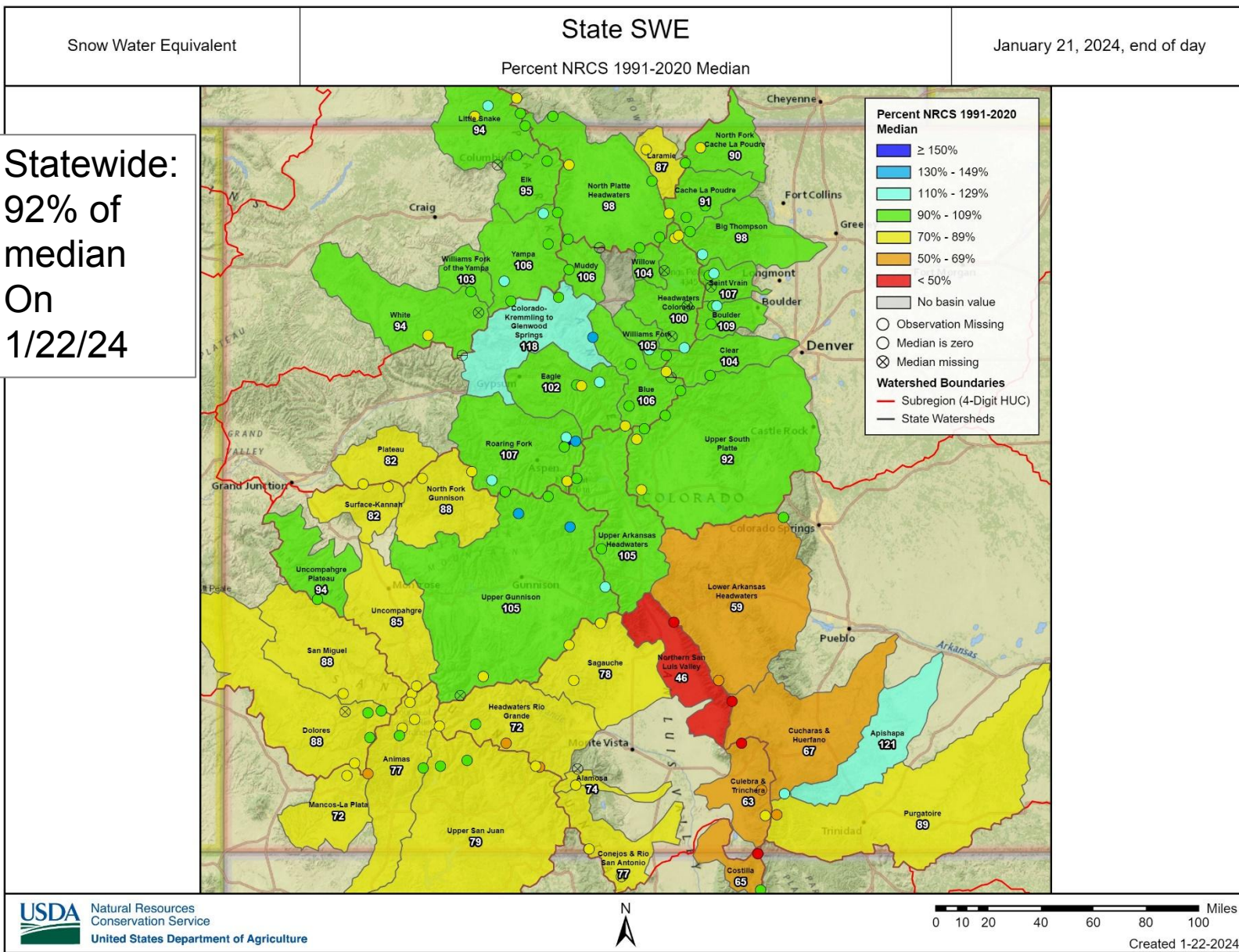


United States Department of Agriculture

Colorado Snow Surveys

Snowpack

Statewide:
92% of
median
On
1/22/24



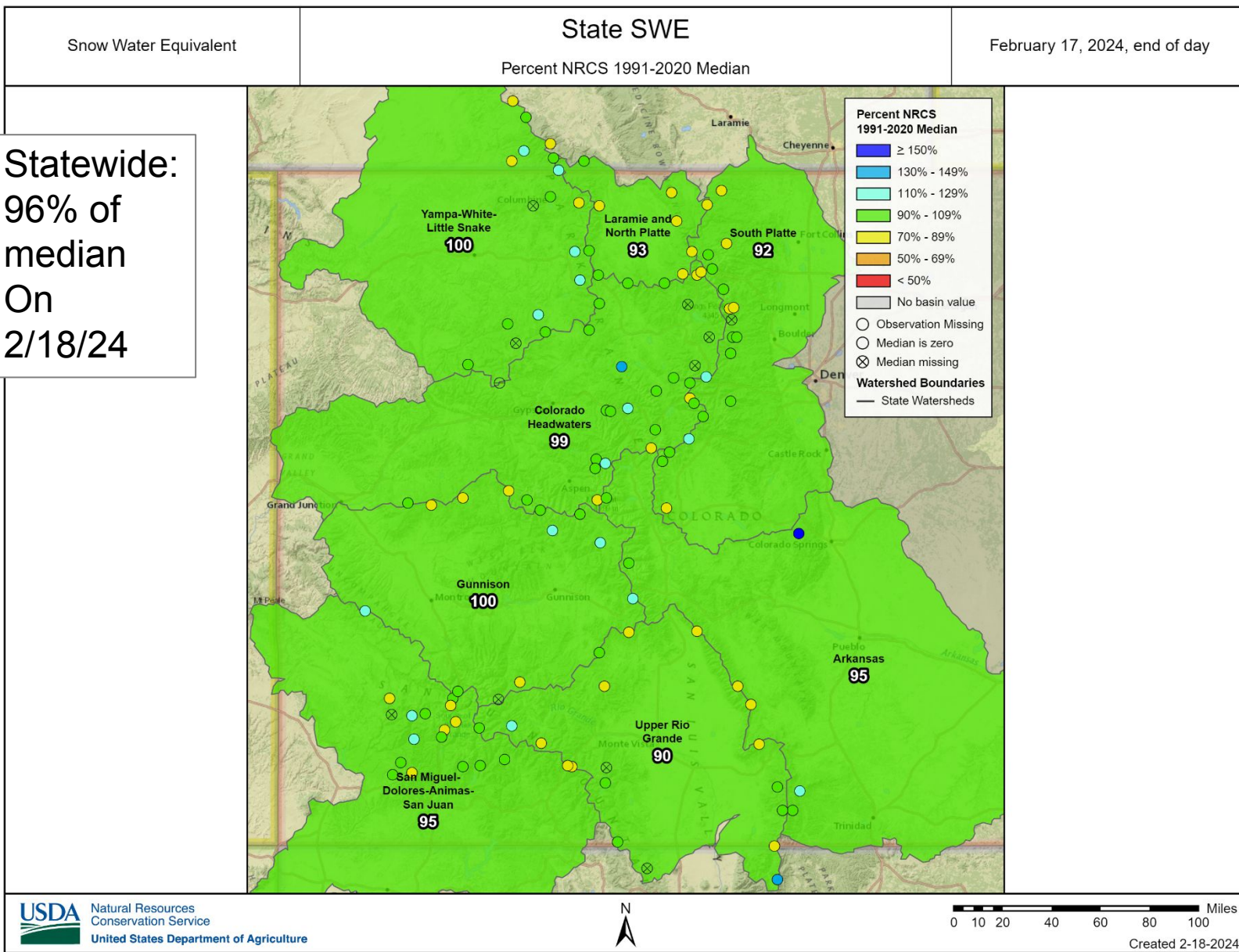


United States Department of Agriculture

Colorado Snow Surveys

Snowpack

Statewide:
96% of
median
On
2/18/24

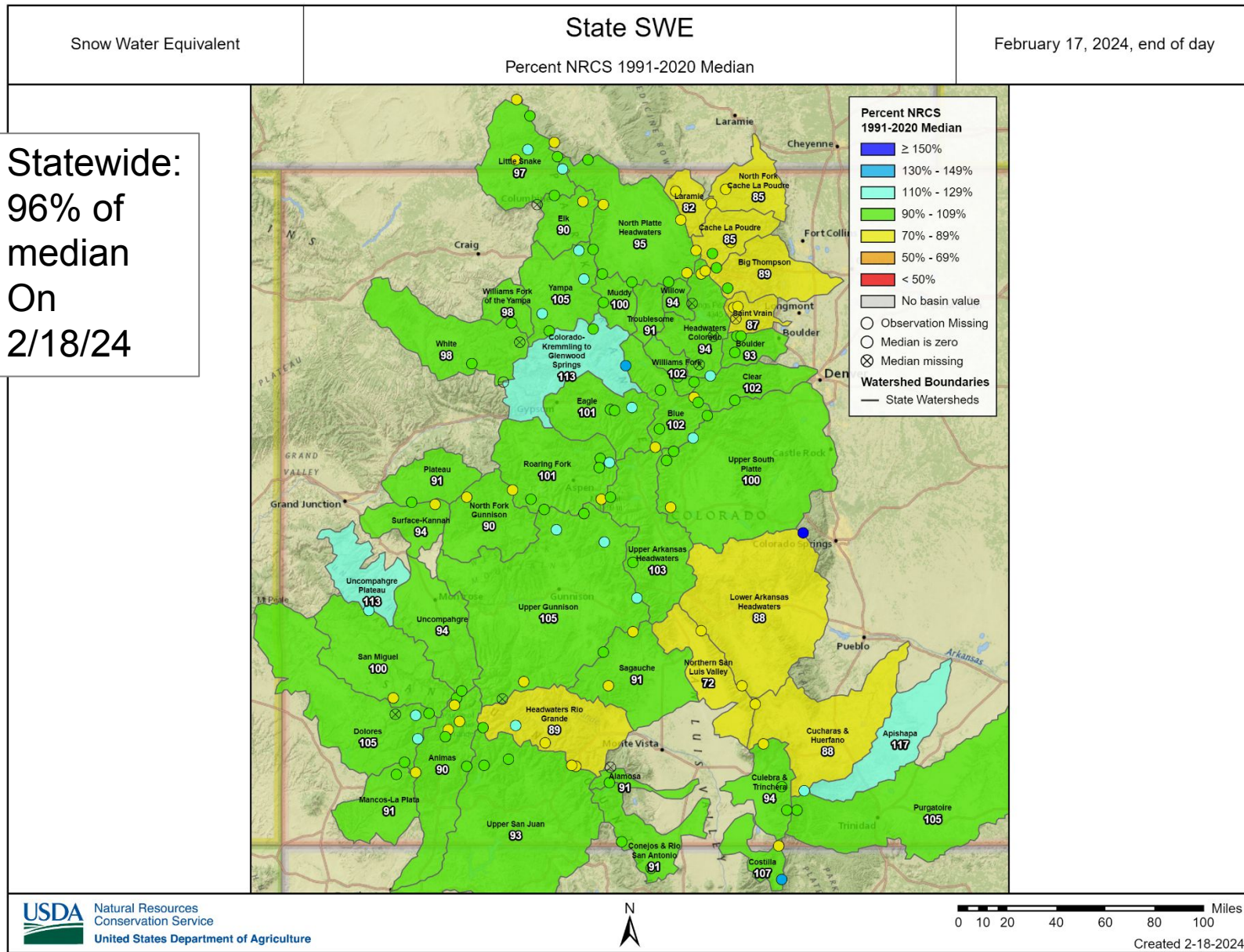




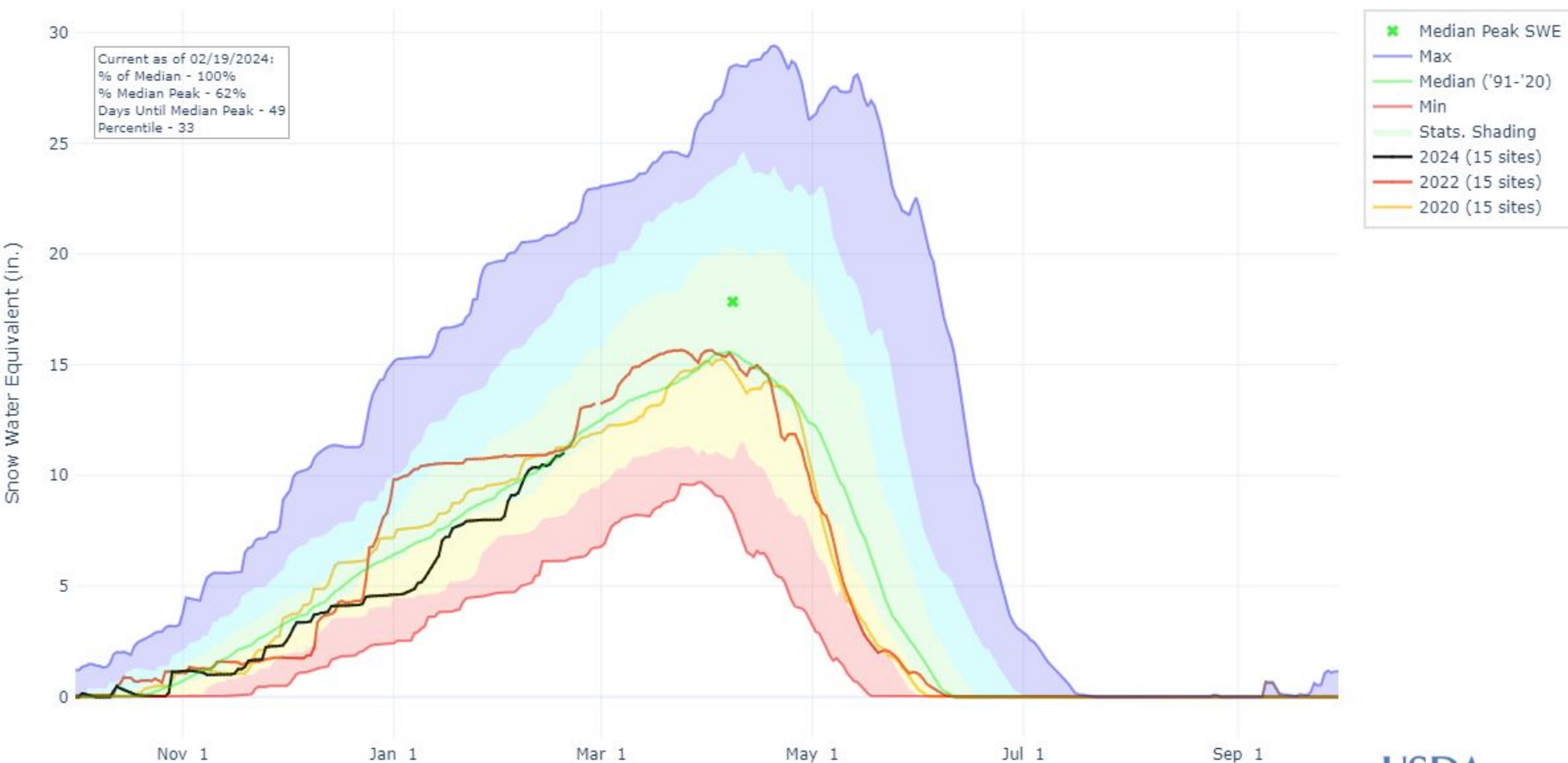
United States Department of Agriculture

Colorado Snow Surveys

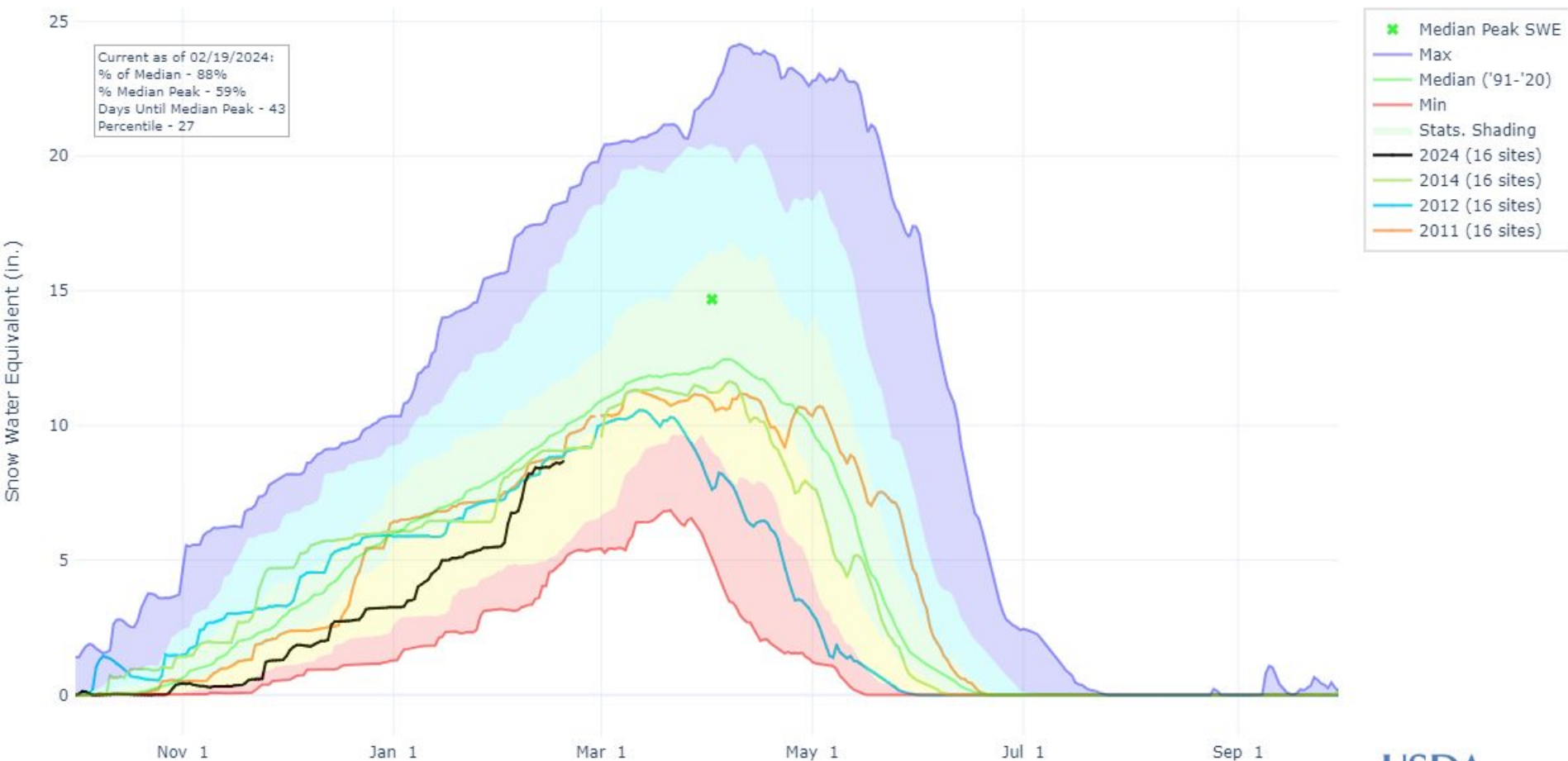
Snowpack



SNOW WATER EQUIVALENT IN GUNNISON



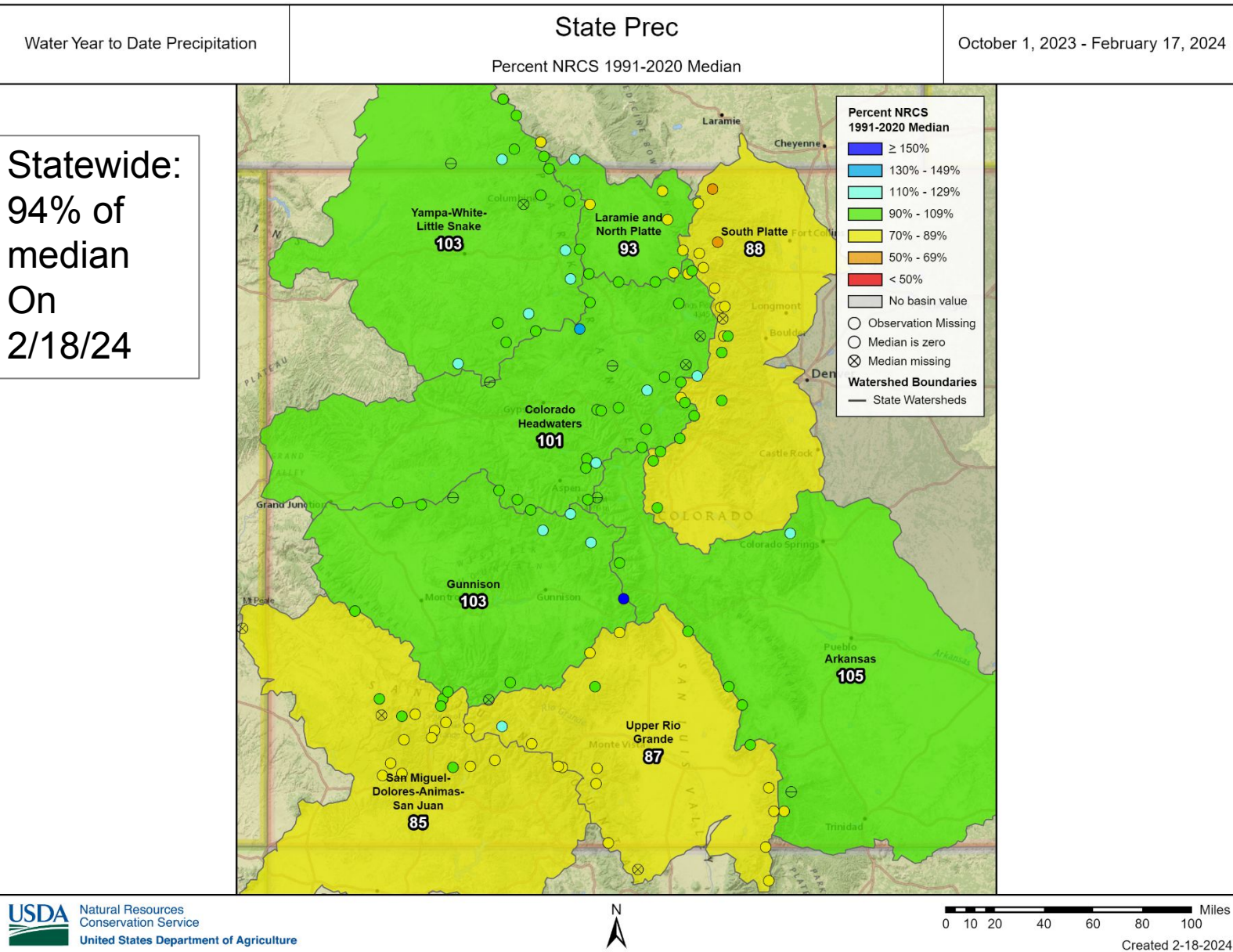
SNOW WATER EQUIVALENT IN RIO GRANDE HEADWATERS





Colorado Snow Surveys

WY Precipitation





Colorado Snow Surveys

PRECIPITATION ACCUMULATION IN STATE OF COLORADO

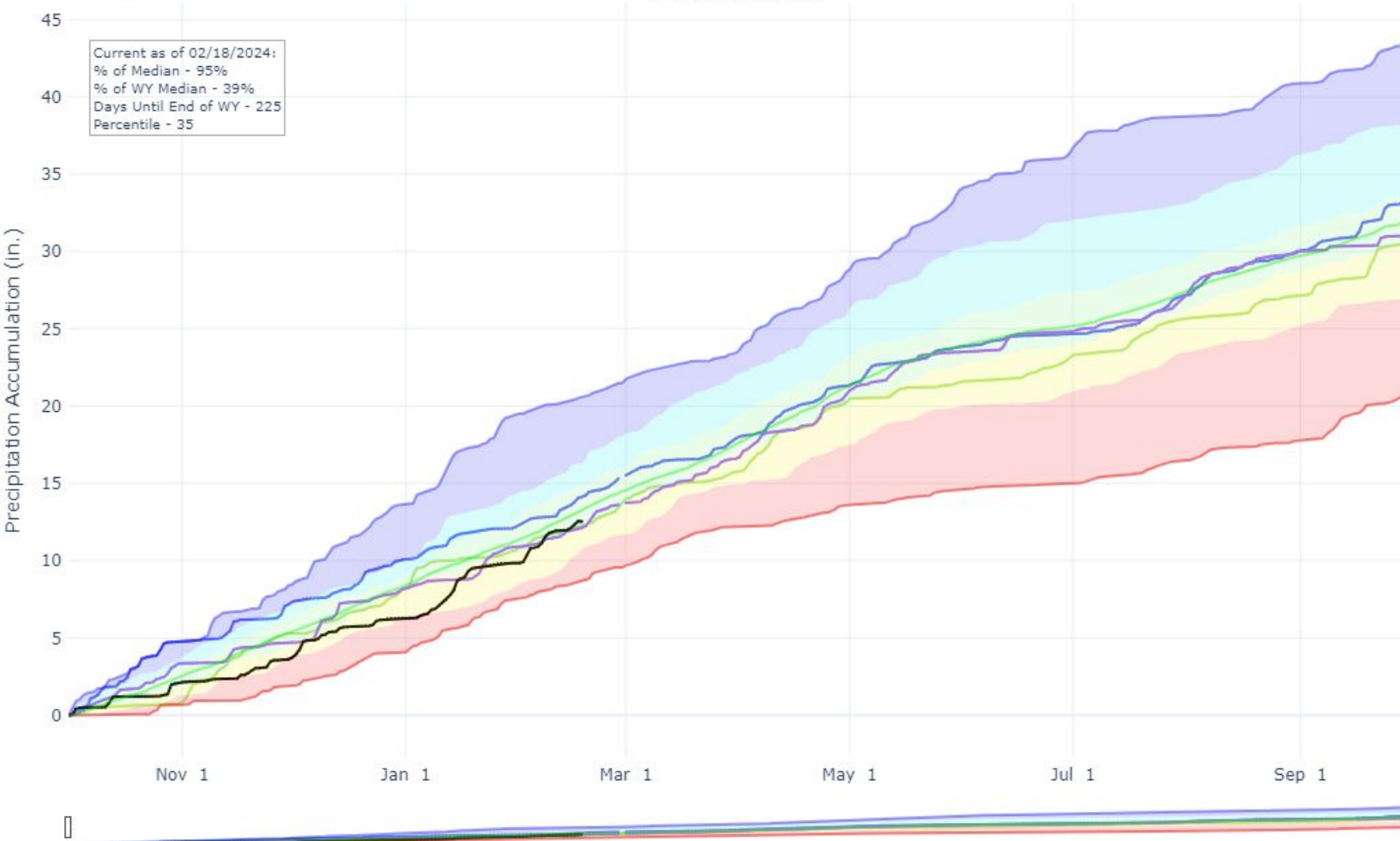
Reset Range

[Link to data: CSV / JSON](#)

Current as of 02/18/2024:
% of Median - 95%
% of WY Median - 39%
Days Until End of WY - 225
Percentile - 35

Station List

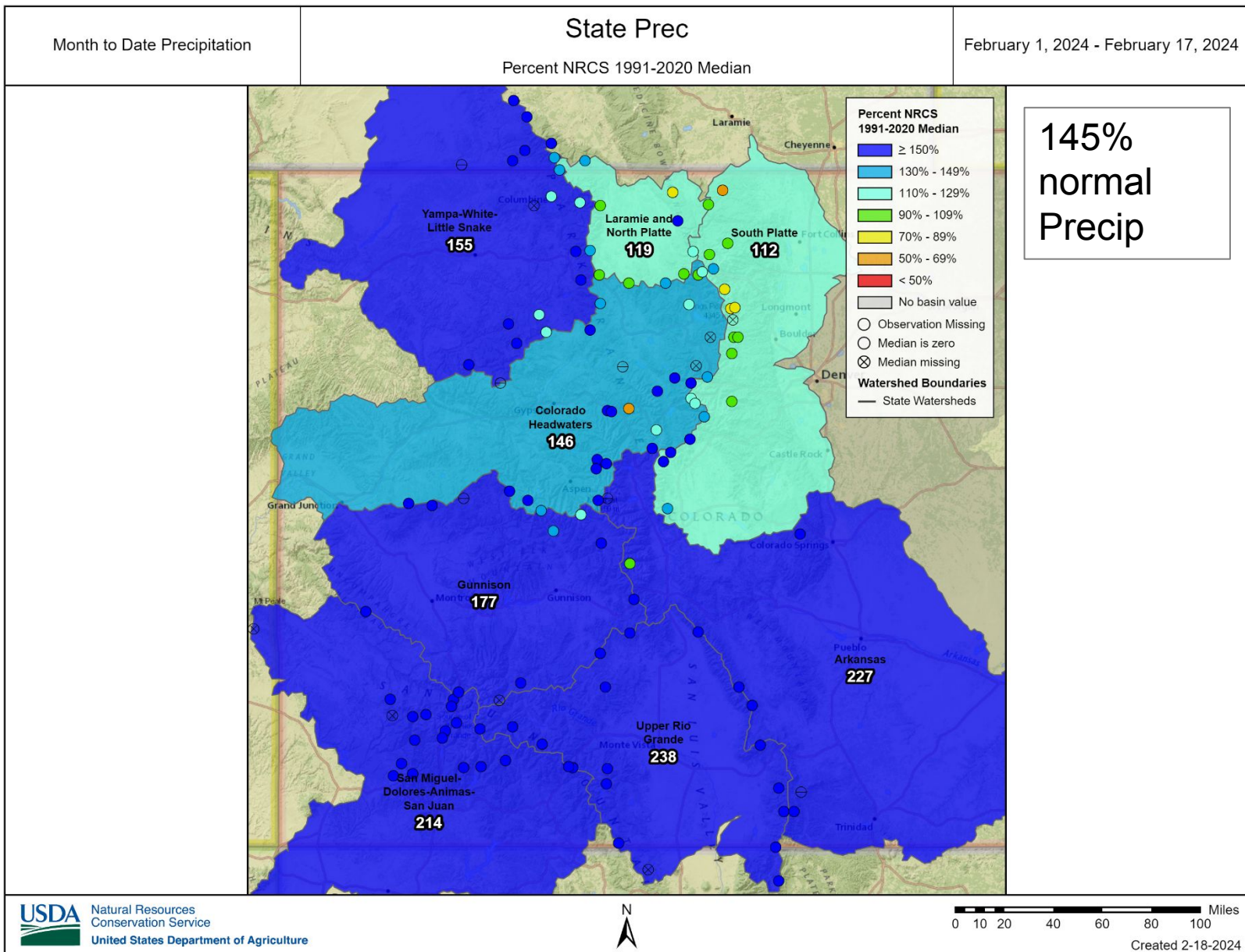
- Max
- Median ('91-'20)
- Min
- Stats. Shading
- 2024 (117 sites)
- 2010 (114 sites)
- 2007 (105 sites)
- 2004 (98 sites)





Colorado Snow Surveys

MTD Precipitation

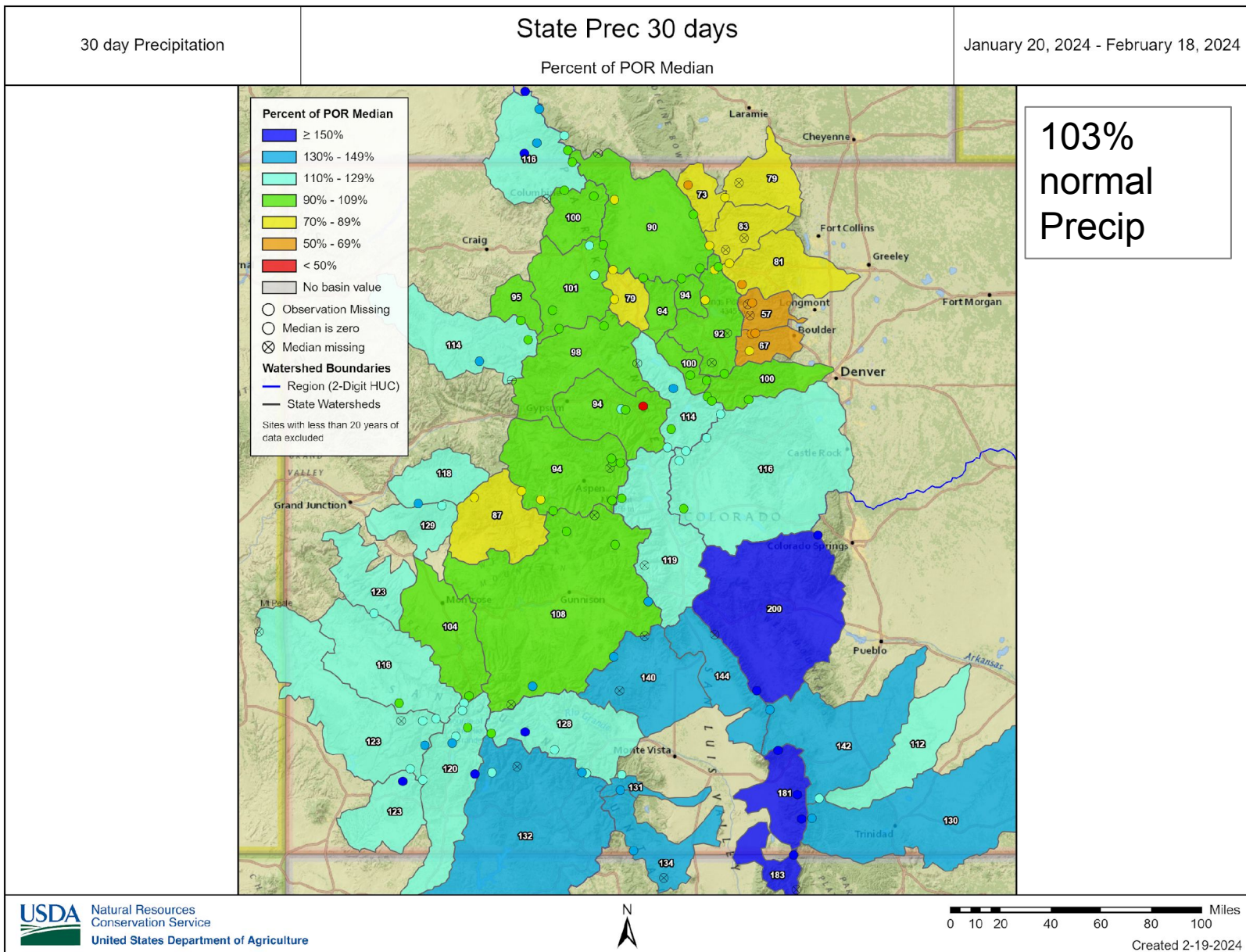




United States Department of Agriculture

Colorado Snow Surveys

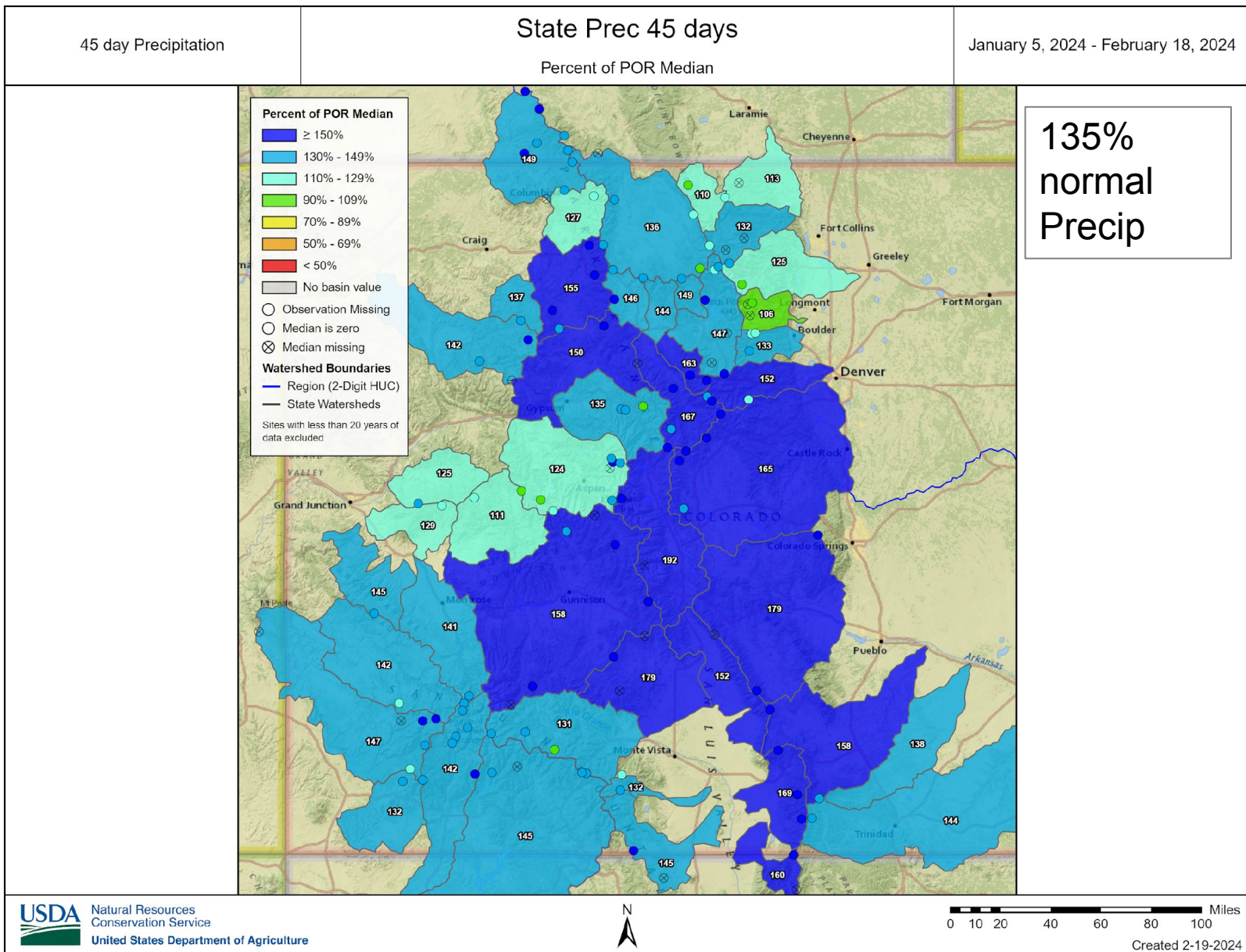
WY Precipitation





Colorado Snow Surveys

Precipitation

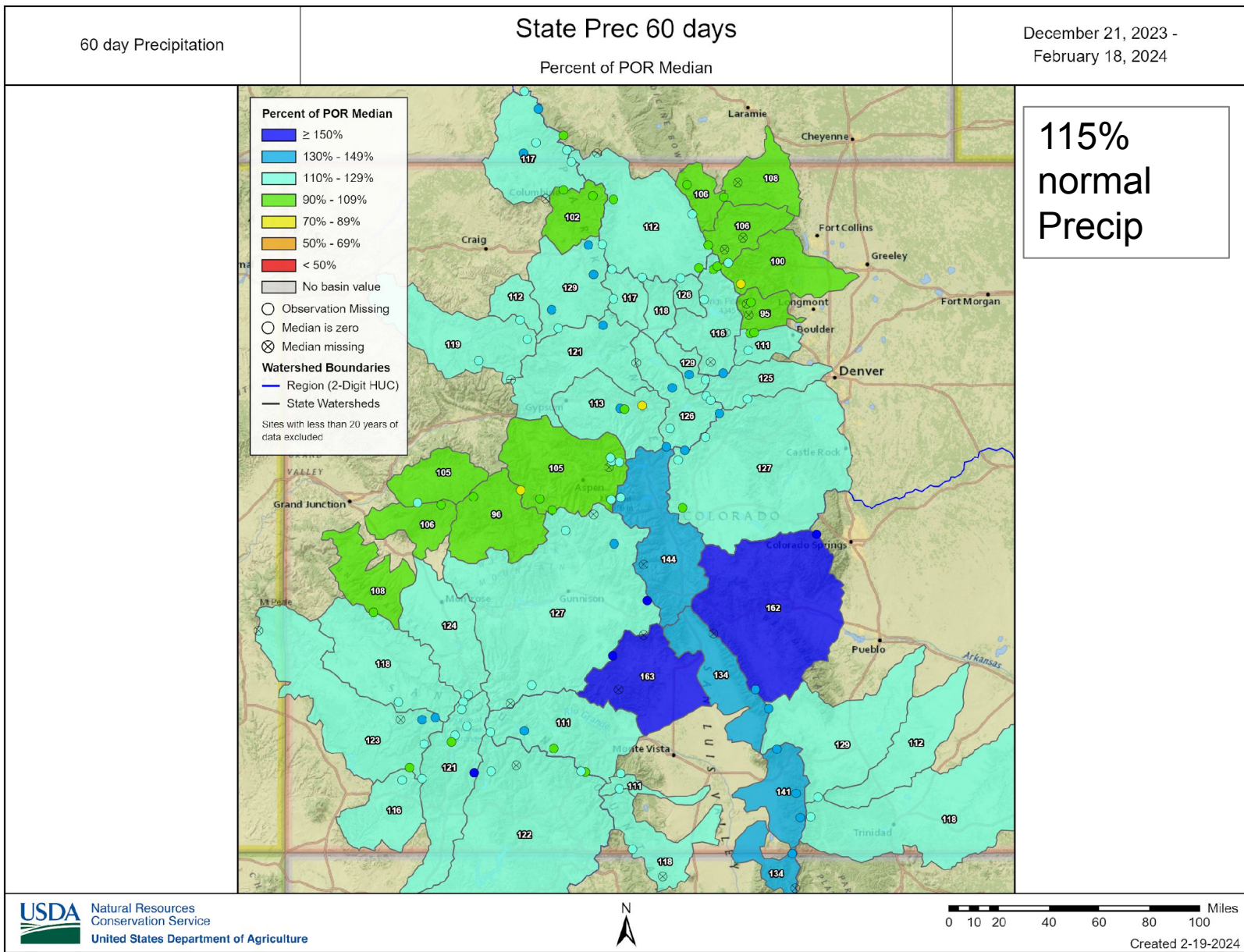




United States Department of Agriculture

Colorado Snow Surveys

Precipitation

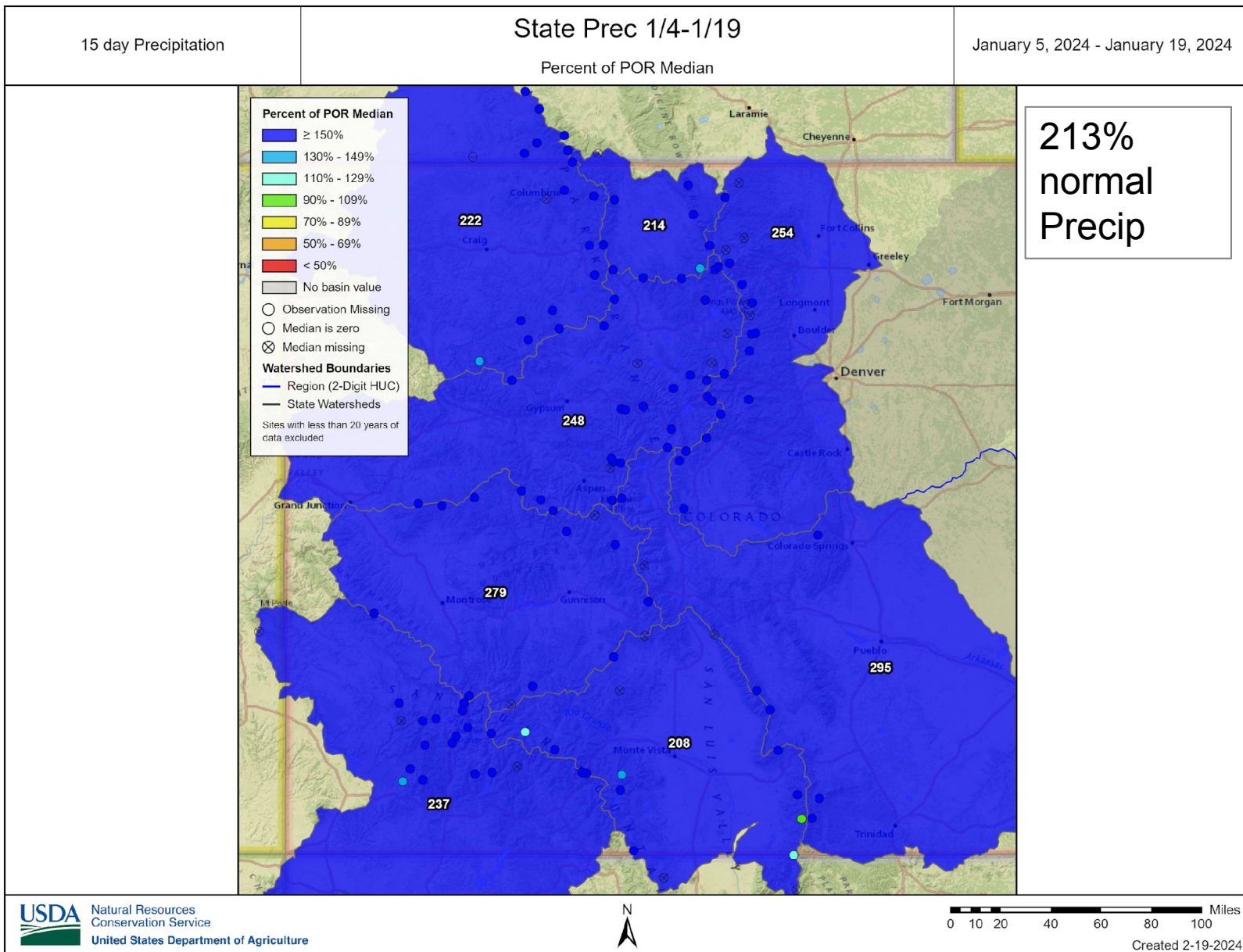




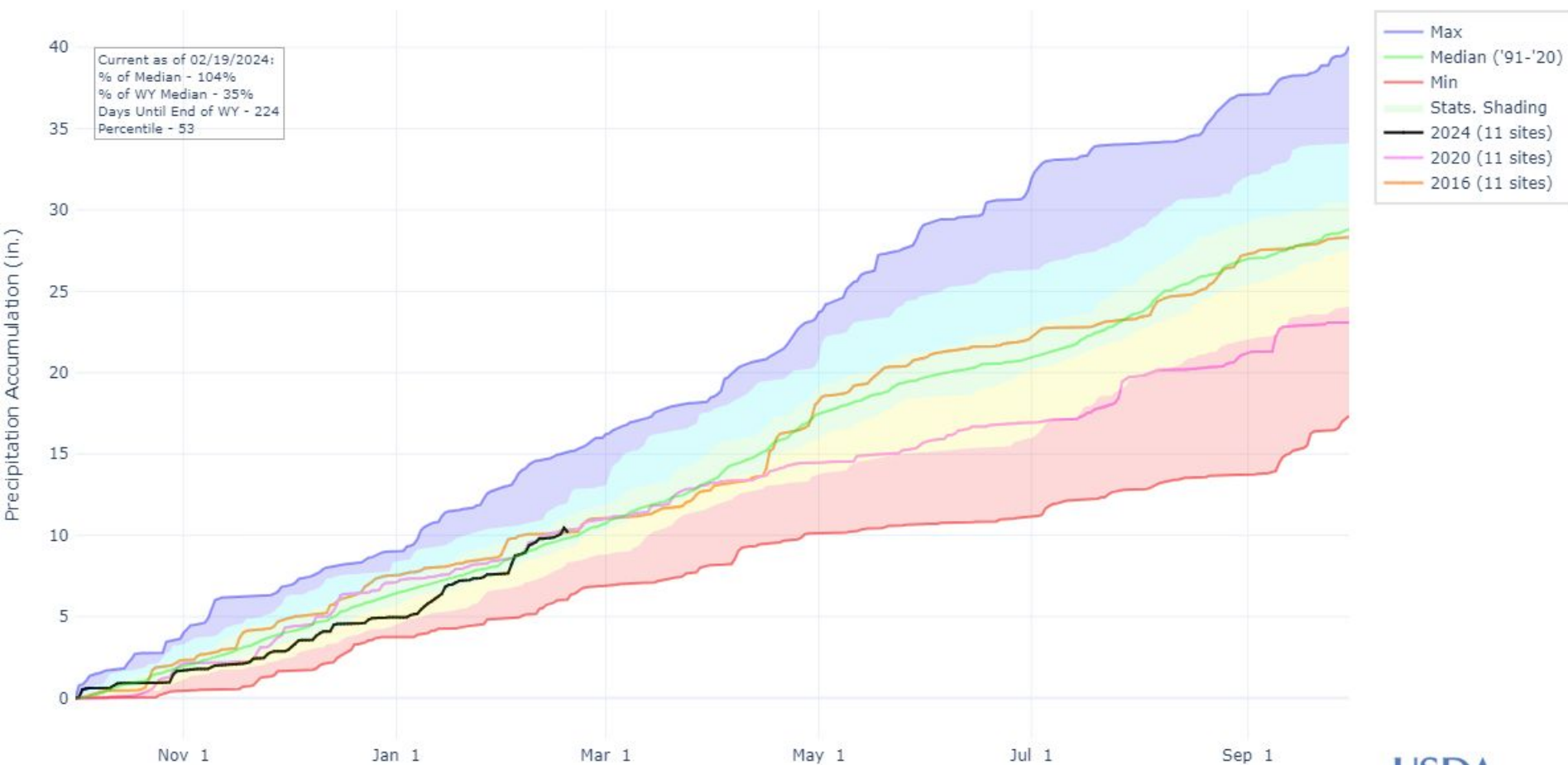
United States Department of Agriculture

Colorado Snow Surveys

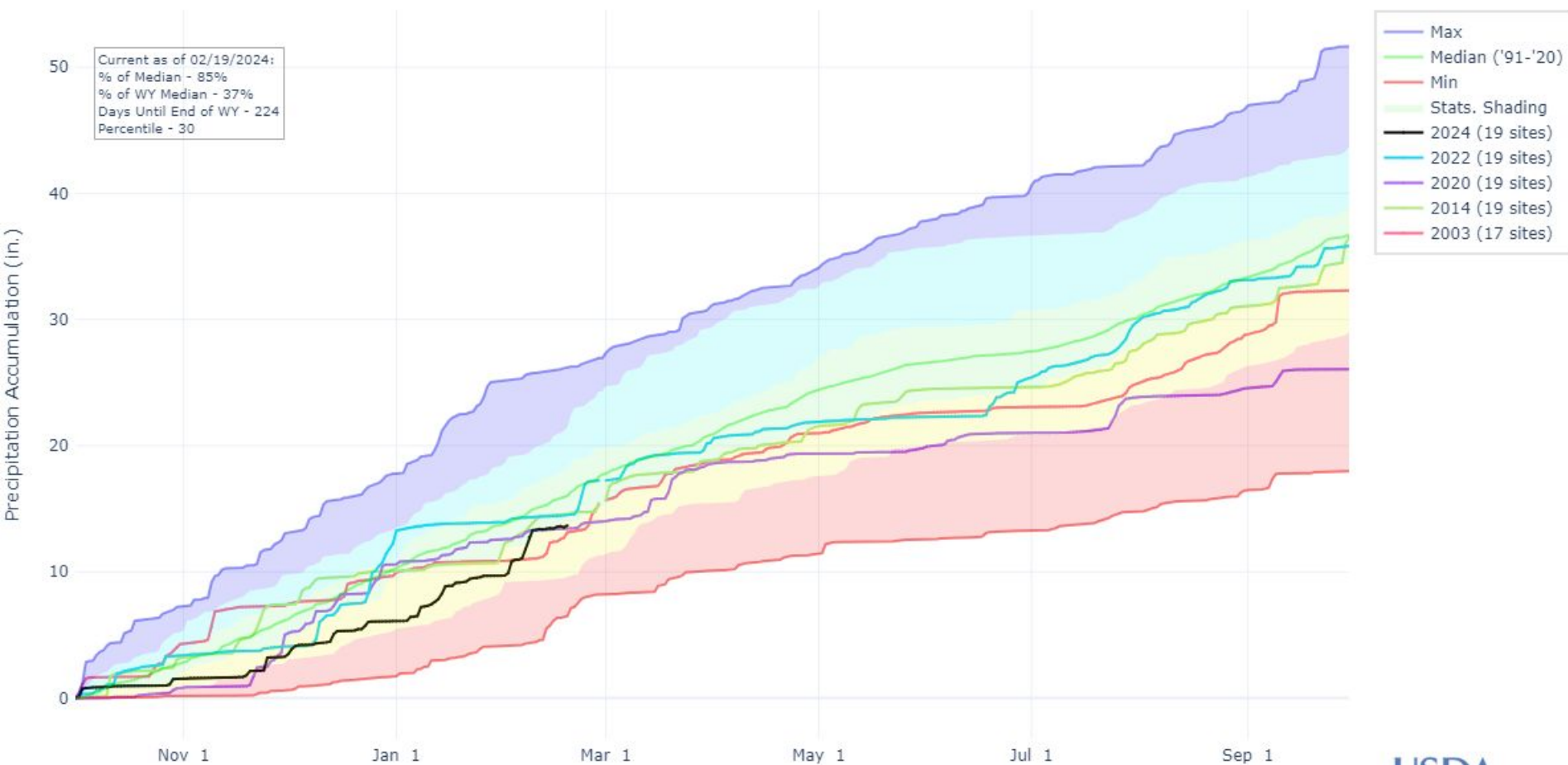
Precipitation



PRECIPITATION ACCUMULATION IN UPPER ARKANSAS



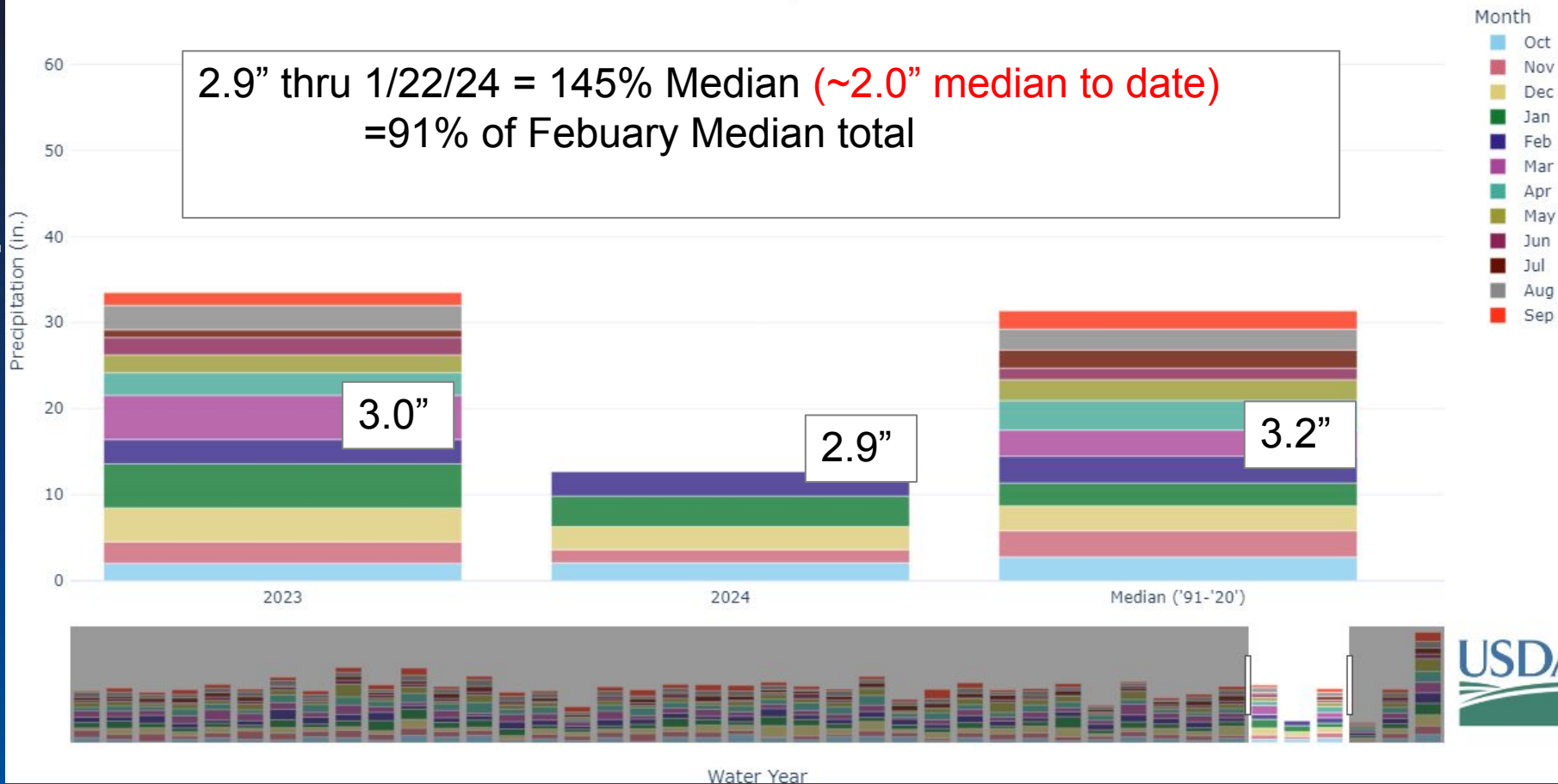
PRECIPITATION ACCUMULATION IN SAN MIGUEL-DOLORES-ANIMAS-SAN JUAN

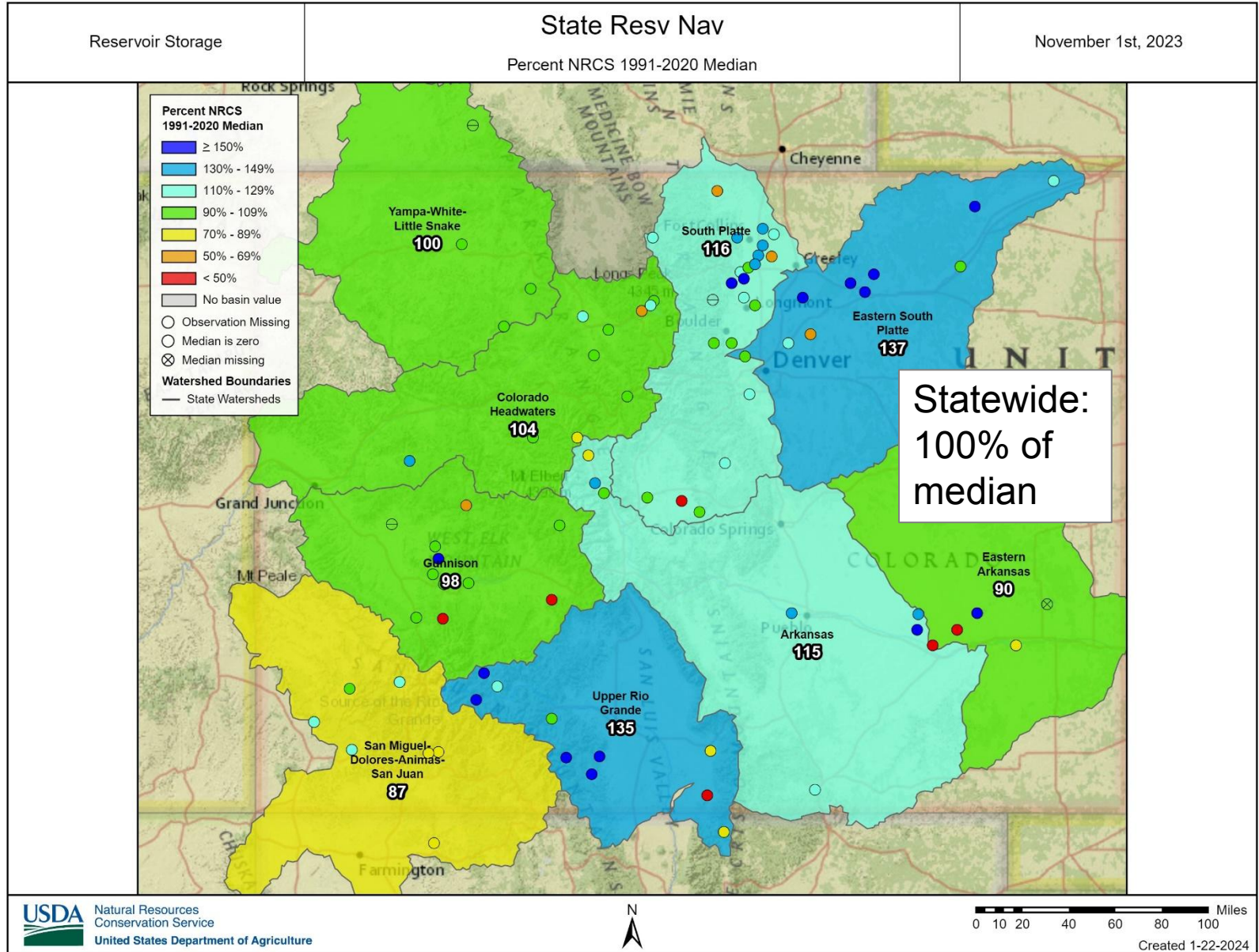


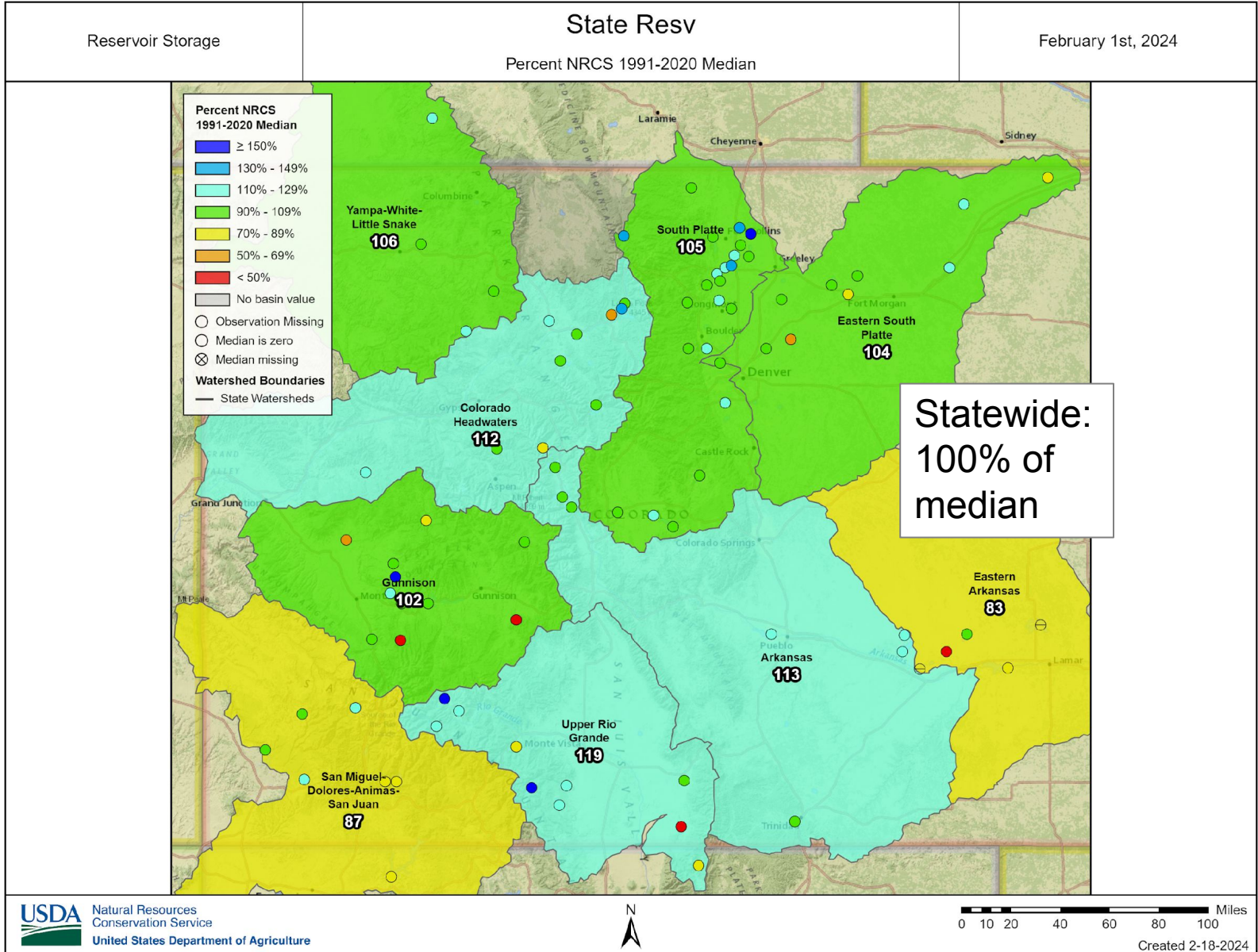
STATE OF COLORADO MONTHLY PRECIPITATION SUMMARY

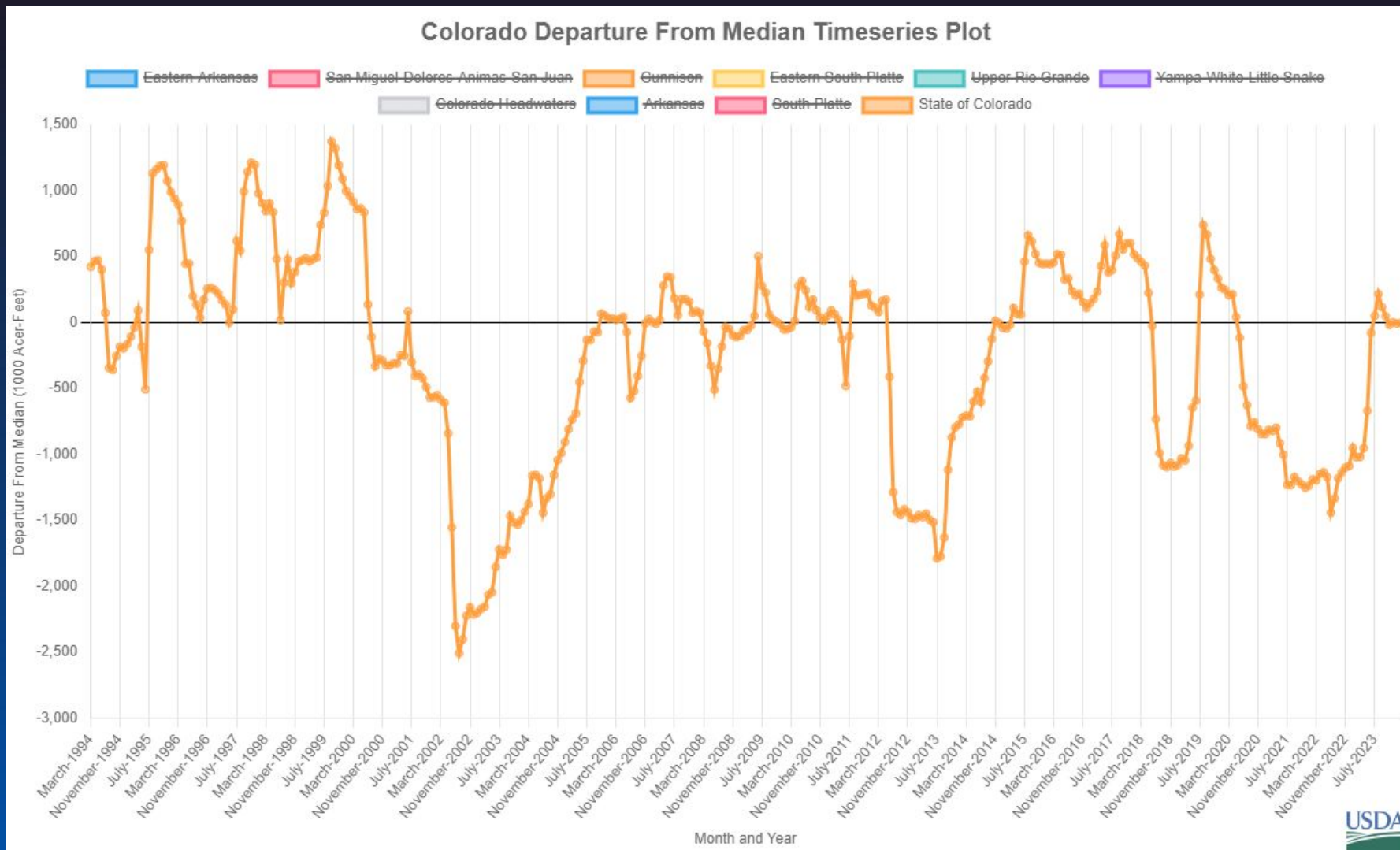
[Link to data: CSV / JSON](#)

2.9" thru 1/22/24 = 145% Median (~2.0" median to date)
=91% of Febuary Median total

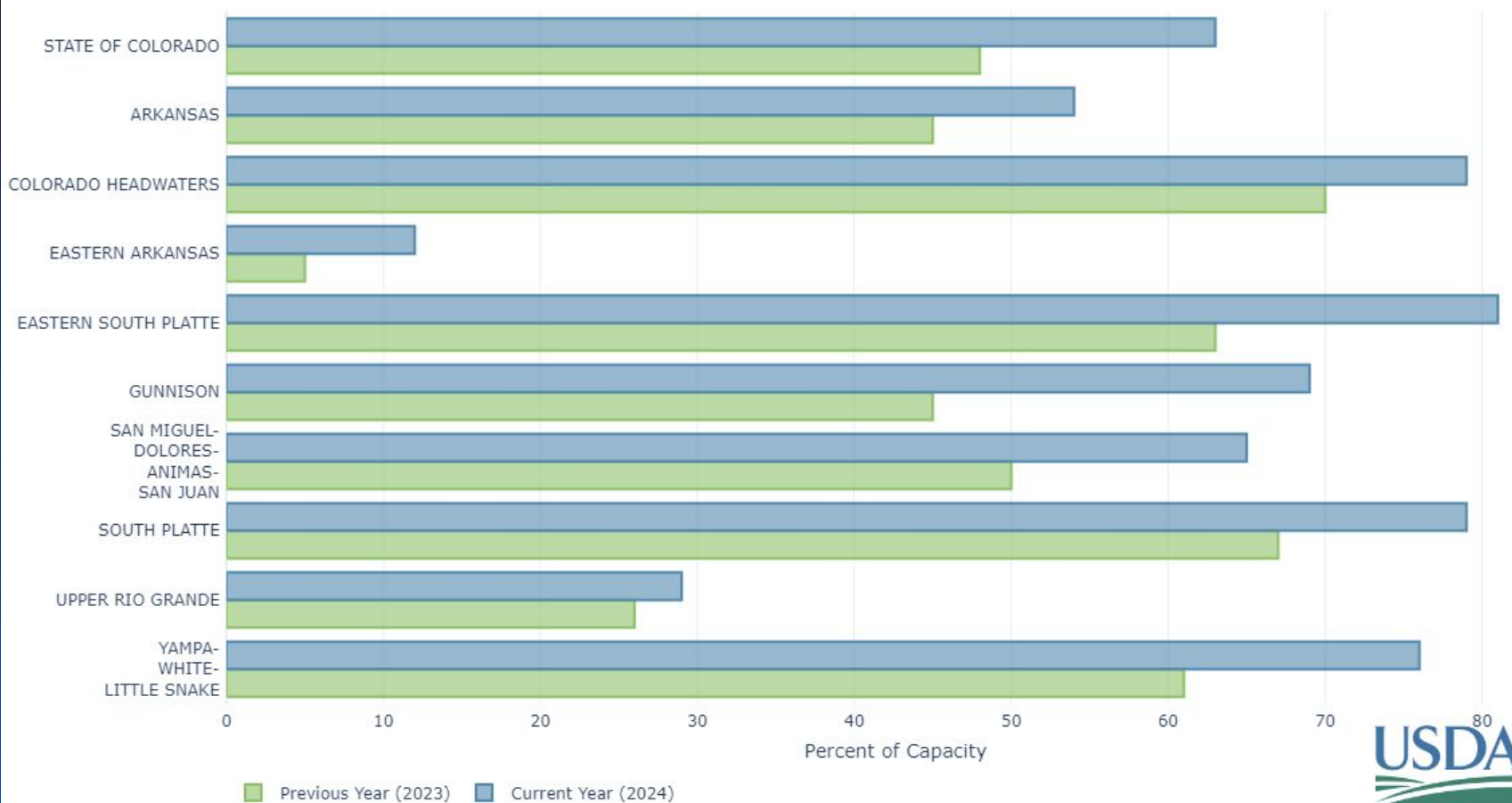




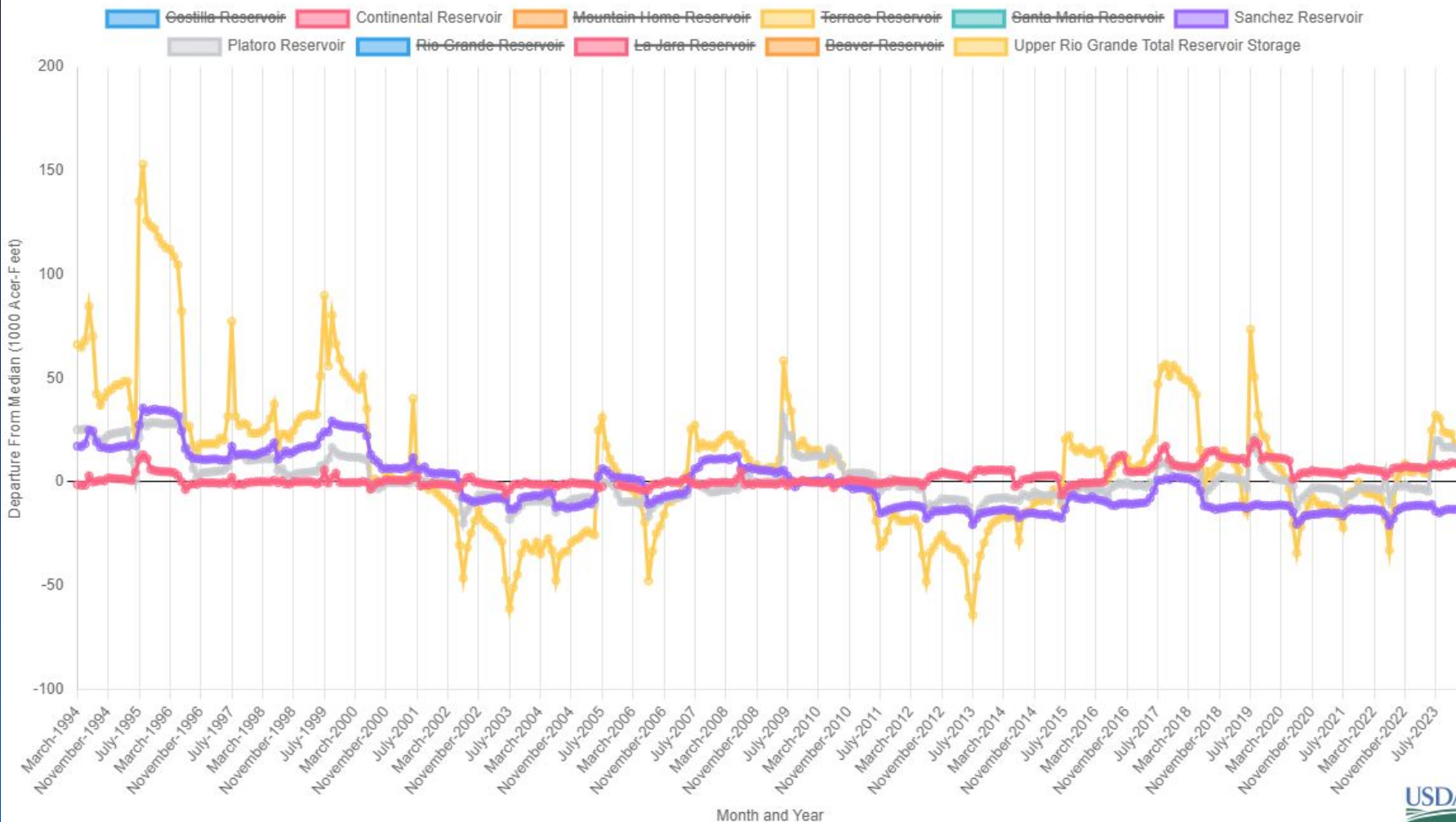




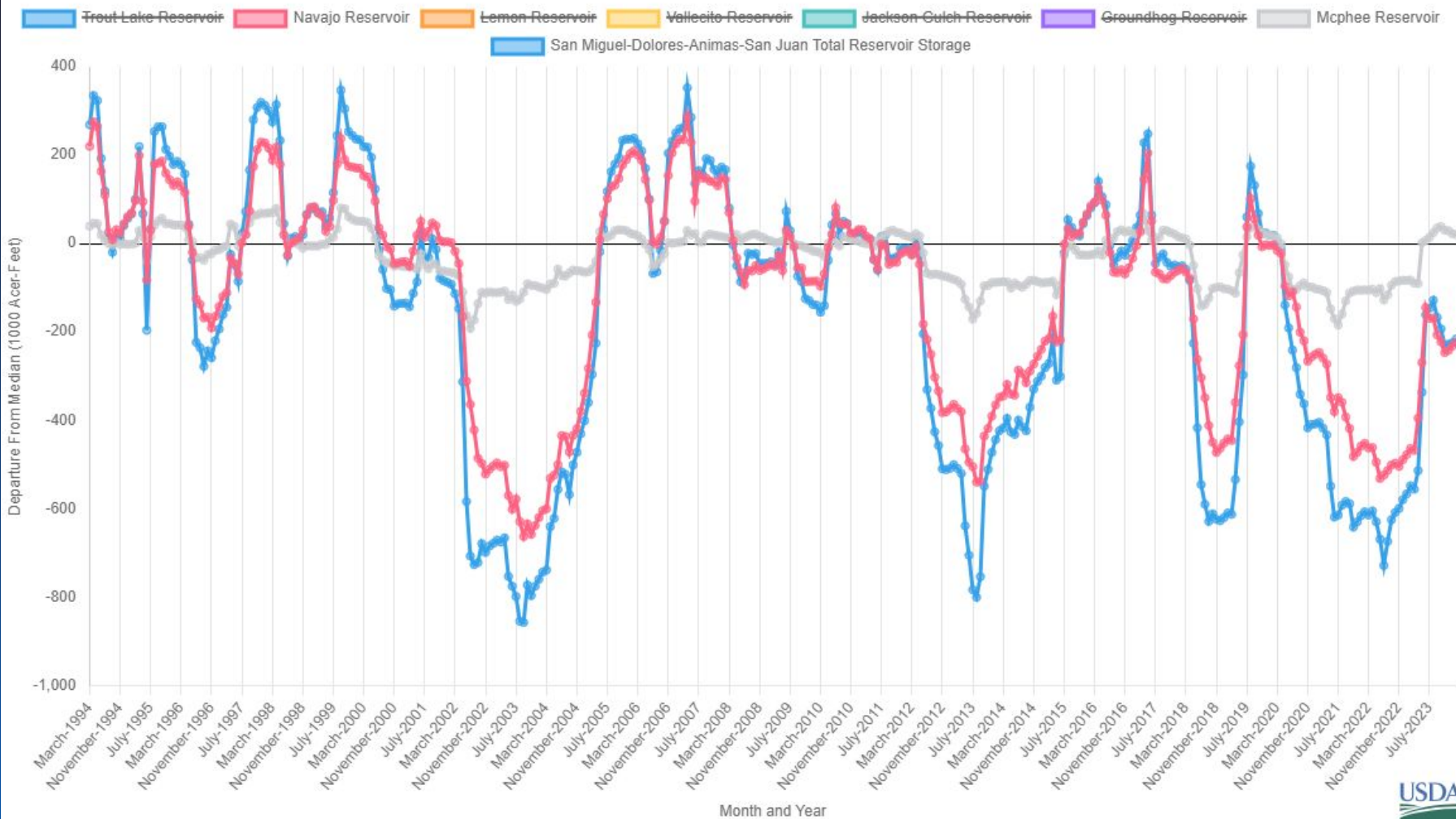
RESERVOIR STORAGE IN COLORADO
END OF JANUARY 2024

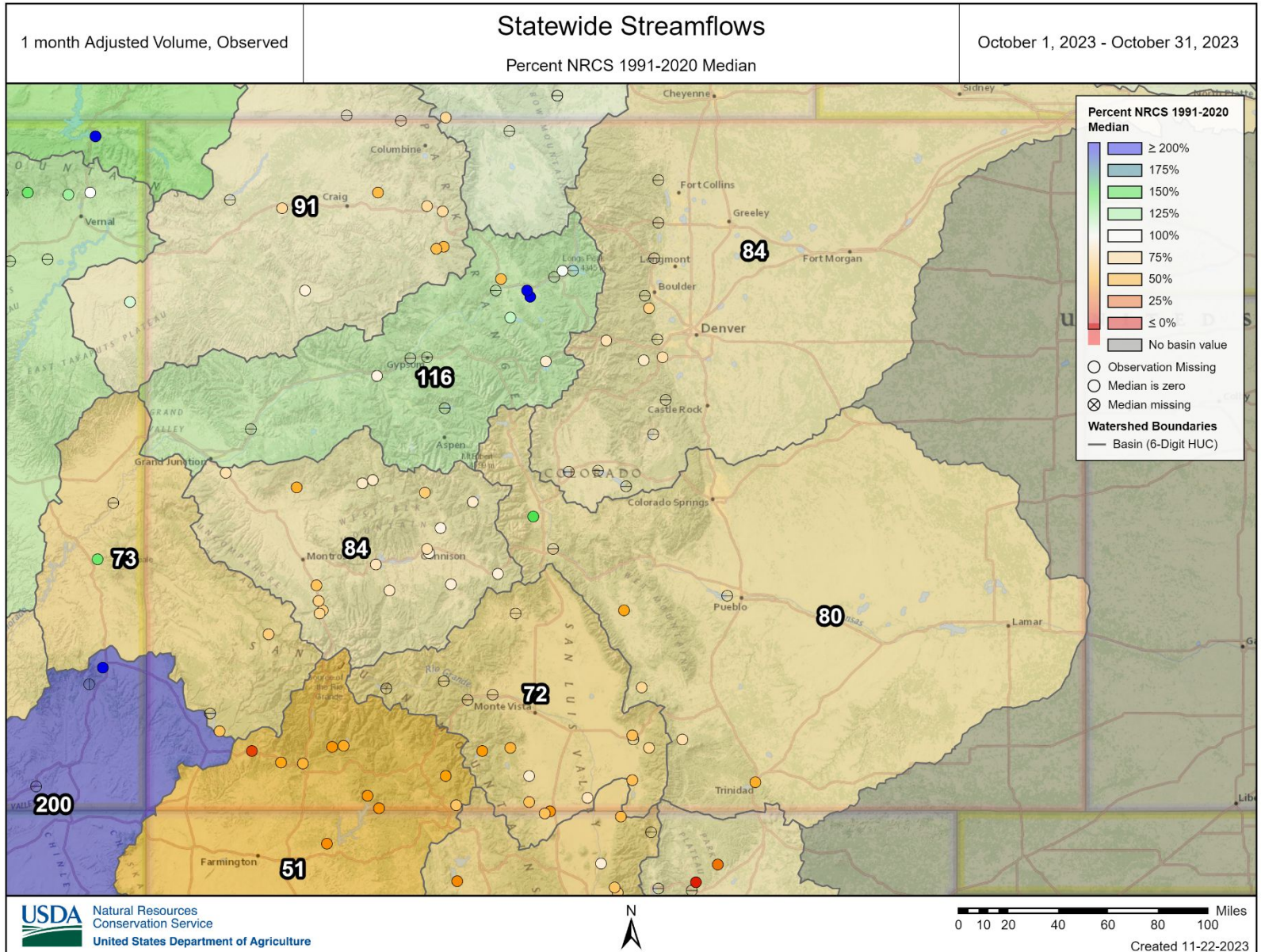


Upper Rio Grande Departure From Median Timeseries Plot



San Miguel-Dolores-Animas-San Juan Departure From Median Timeseries Plot



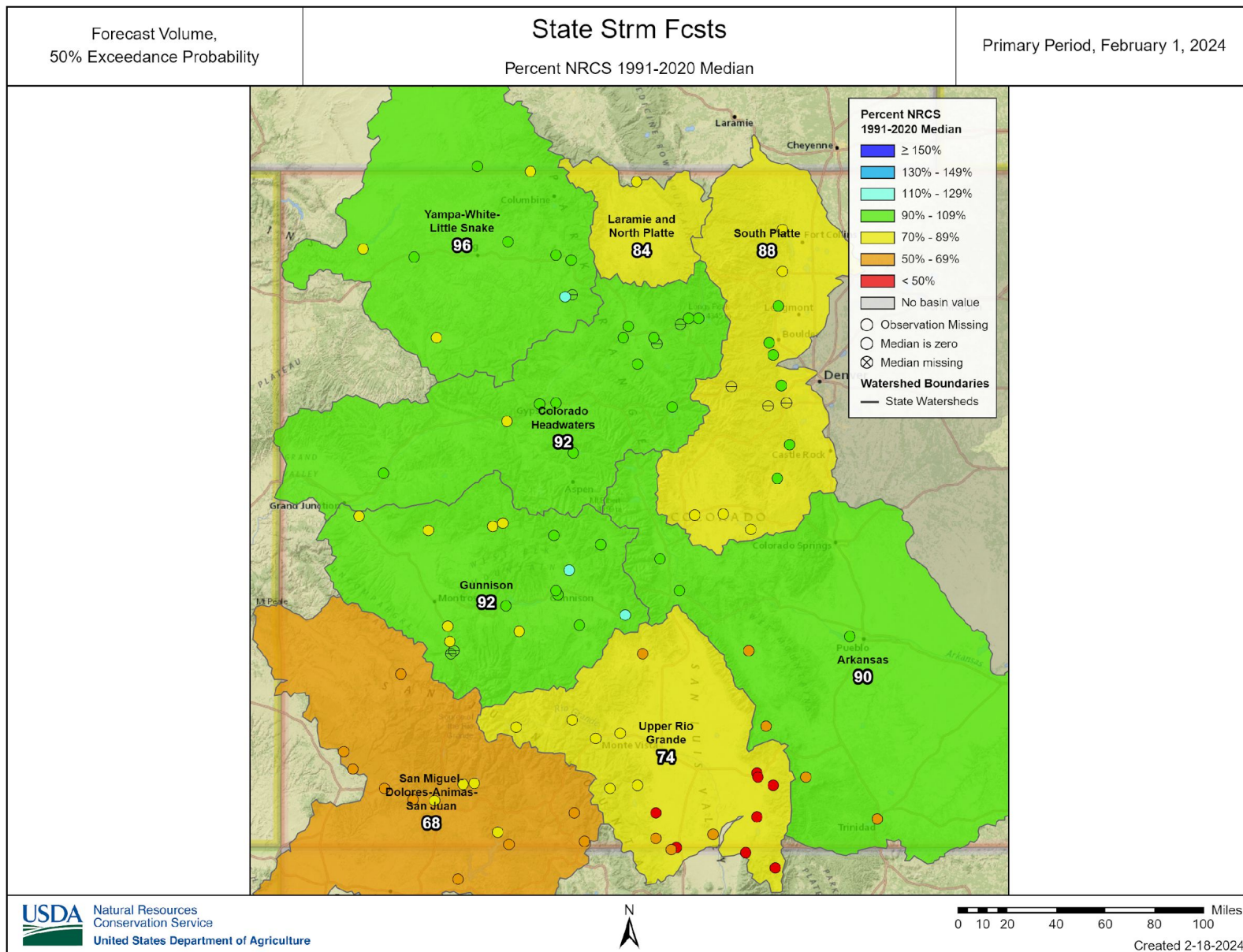




United States Department of Agriculture

Colorado Snow Surveys

Streamflow Forecasts





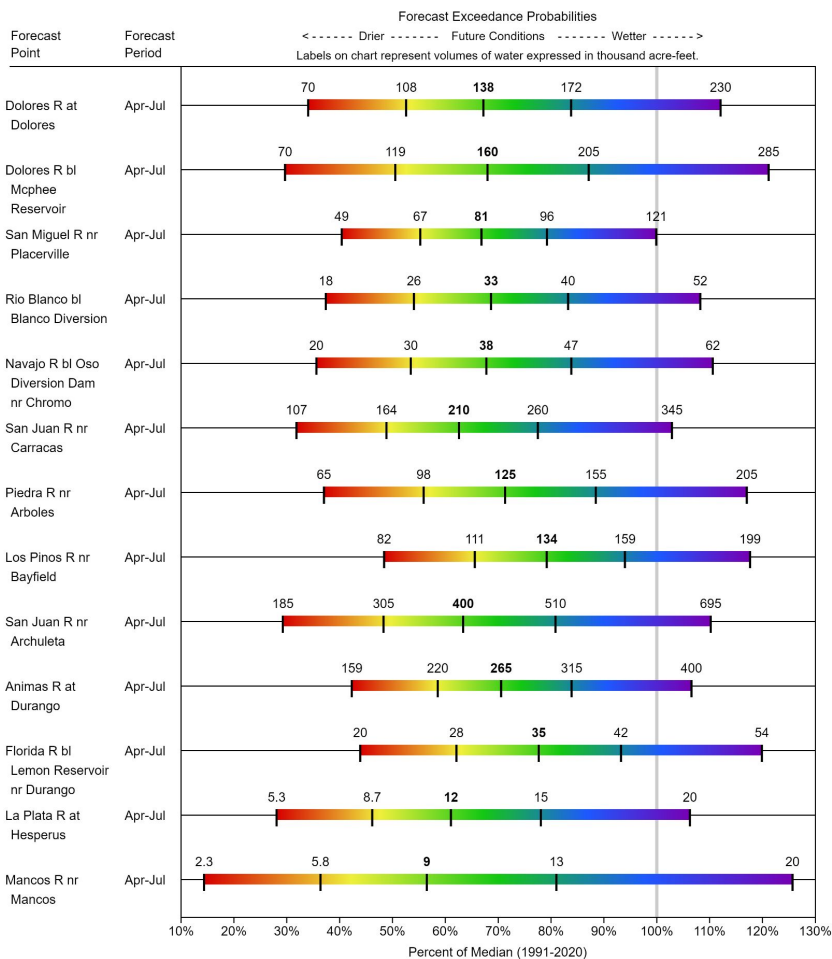
United States Department of Agriculture

Colorado Snow Surveys

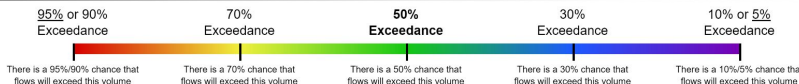
SAN MIGUEL-DOLORES-ANIMAS-SAN JUAN

Water Supply Forecasts

February 1, 2024



Legend



When selected, the following historic streamflow values and statistics will be shown.

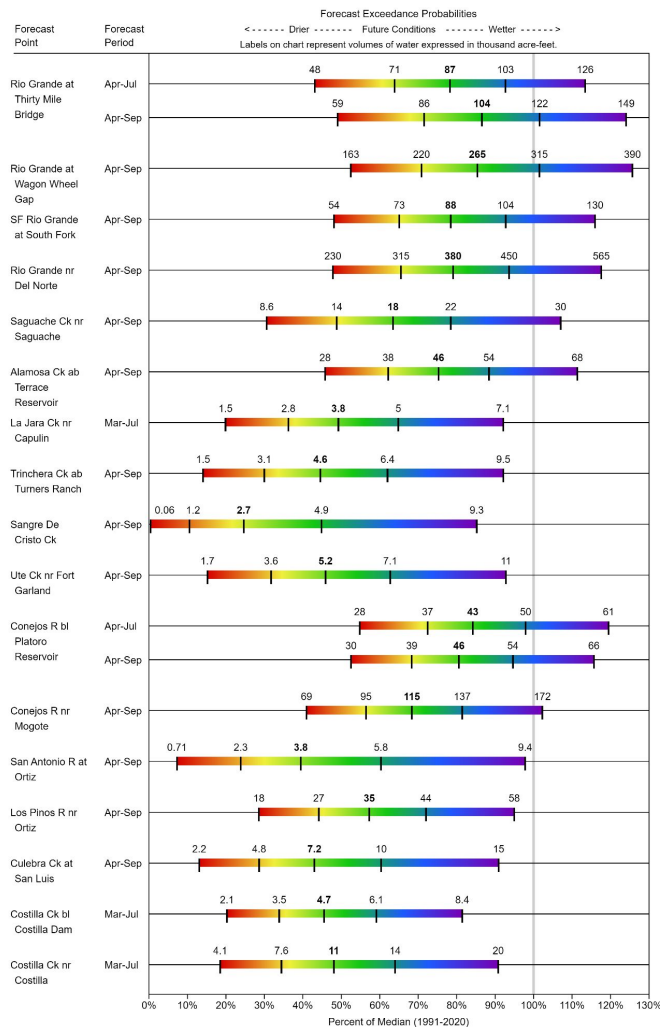


Some forecasts may be for volumes that are regulated or influenced by diversions and water management.

UPPER RIO GRANDE

Water Supply Forecasts

February 1, 2024



Legend



When selected, the following historic streamflow values and statistics will be shown.



Some forecasts may be for volumes that are regulated or influenced by diversions and water management.

Streamflow Forecasts

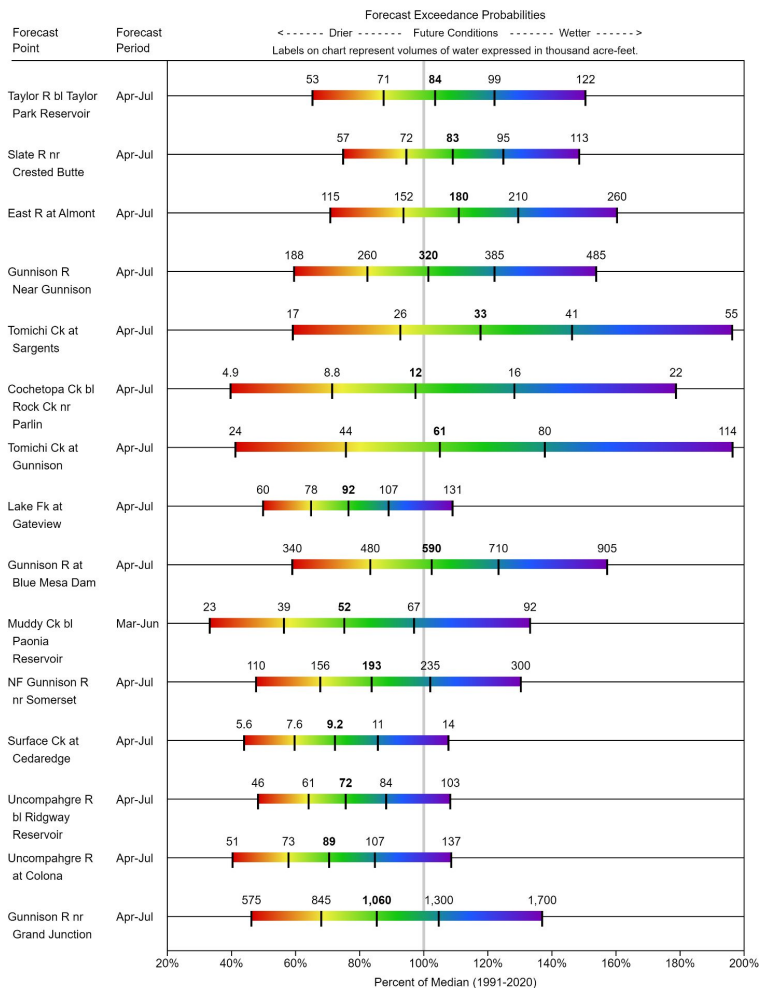


United States Department of Agriculture

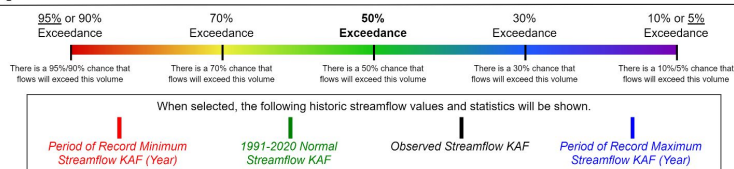
Colorado Snow Surveys

Streamflow Forecasts

GUNNISON Water Supply Forecasts February 1, 2024

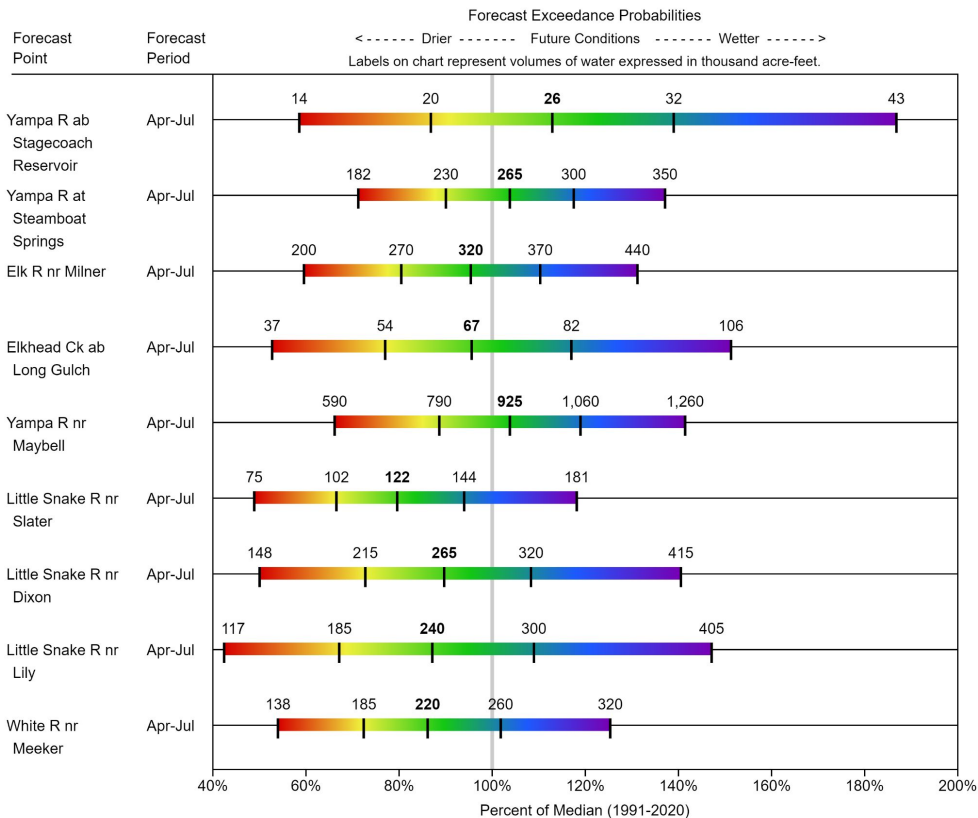


Legend

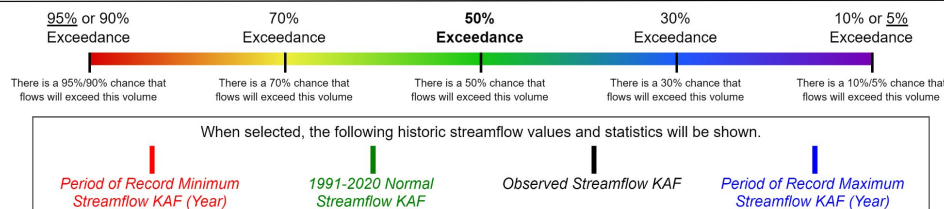


Some forecasts may be for volumes that are regulated or influenced by diversions and water management.

YAMPA-WHITE-LITTLE SNAKE Water Supply Forecasts February 1, 2024

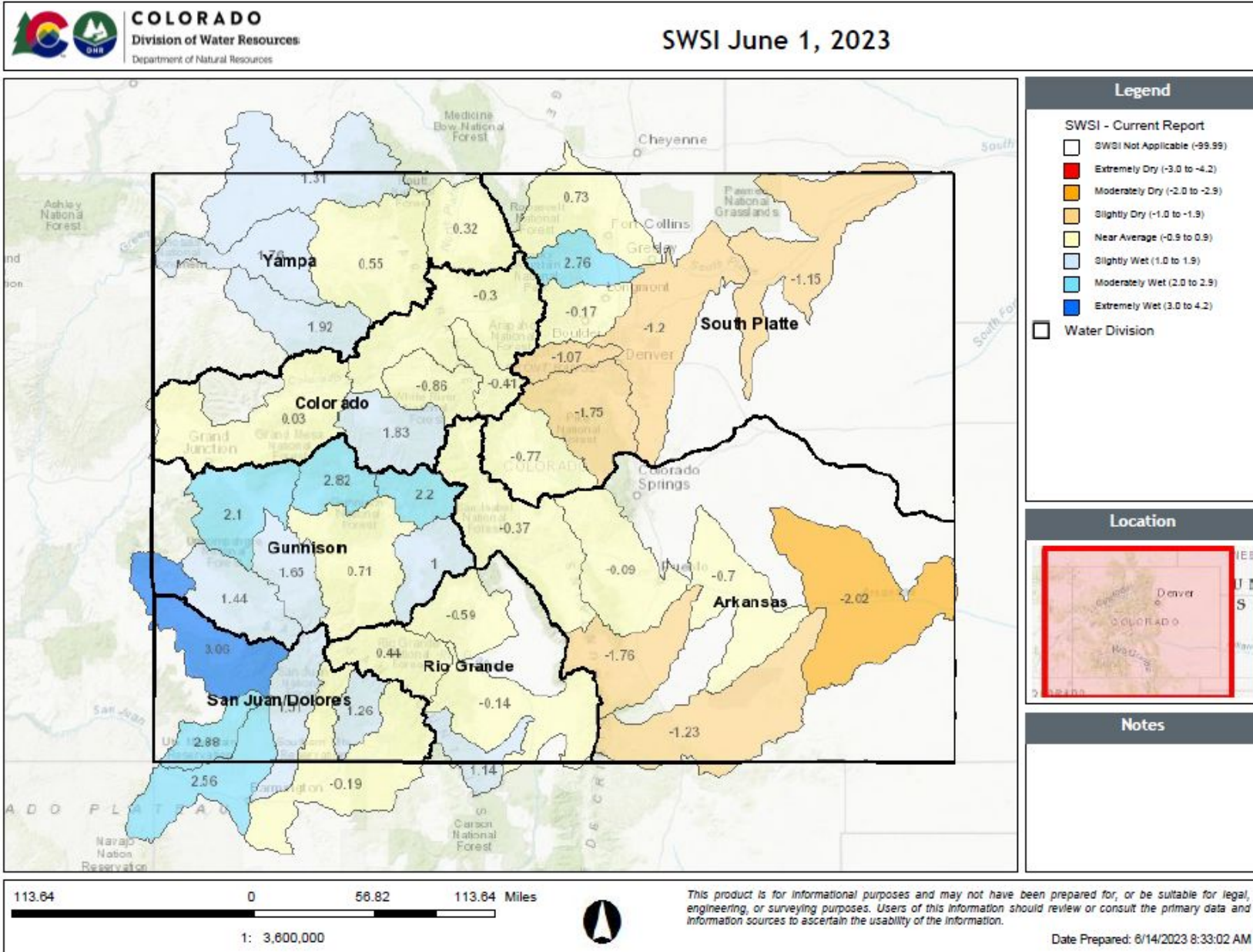


Legend



Some forecasts may be for volumes that are regulated or influenced by diversions and water management.

June 1, 2023 SWSI



Legend

SWSI - Current Report

- SWSI Not Applicable (-99.99)
- Extremely Dry (-3.0 to -4.2)
- Moderately Dry (-2.0 to -2.9)
- Slightly Dry (-1.0 to -1.9)
- Near Average (-0.9 to 0.9)
- Slightly Wet (1.0 to 1.9)
- Moderately Wet (2.0 to 2.9)
- Extremely Wet (3.0 to 4.2)

- Water Division

Location



Notes

Summary

- Statewide snowpack is 96% of median.
 - Lowest basin is the Upper Rio Grande @ 90%
 - Highest basins are
 - Gunnison
 - Combined Yampa-White-N. Platte
- A 4% increase since last month's presentation.
- Early January and February storms provided a needed boost, but didn't quite provide enough to make a lasting improvement given the pre-existing deficit.
- In a normal year Colorado is typically accumulated about 75% of it's median annual peak snowpack.
- Statewide reservoir storage is 100% of median
- Statewide precipitation is 94% of median. Ranging from 85% in the SMDASJ to 105% in the Arkansas.



Non-Discrimination Statement:

In accordance with Federal civil rights law and U.S. Department of agriculture (USDA) civil rights regulations and policies, the USDA, its Agencies, offices, and employees, and institutions participating in or administering USDA programs are prohibited from discriminating based on race, color, national origin, religion, sex, gender identity (including gender expression), sexual orientation, disability, age, marital status, family/parental status, income derived from a public assistance program, political beliefs, or reprisal or retaliation for prior civil rights activity, in any program or activity conducted or funded by USDA (not all bases apply to all programs). Remedies and complaint filing deadlines vary by program or incident.

Persons with disabilities who require alternative means of communication for program information (e.g., Braille, large print, audiotape, American Sign Language, etc.) should contact the responsible Agency or USDA 's TARGET Center at (202) 720-2600 (voice and TTY) or contact USDA through the Federal Relay Service at (800) 877-8339. Additionally, program information may be made available in languages other than English.

To file a program discrimination complaint, complete the USDA Program Discrimination Complaint Form, AD-3027, found online at [How to File a Program Discrimination Complaint](#) and at any USDA office or write a letter addressed to USDA and provide in the letter all of the information requested in the form. To request a copy of the complaint form, call [866] 632-9992. Submit your completed form or letter to USDA by: (1) mail: U.S. Department of Agriculture, Office of the Assistant Secretary for Civil Rights, 1400 Independence Avenue, SW, Washington, D.C. 20250-9410; (2) fax: (202) 690-7442; or (3) email: program.intake@usda.gov.



United States Department of Agriculture

Colorado Snow Surveys

Water Conditions Monitoring Committee Meeting February 20th, 2024

NRCS Snow Survey and Water Supply Forecasting Program

Brian Domonkos

Hydrologist

Brian.Domonkos@usda.gov

720-544-2853

<http://www.nrcs.usda.gov/wps/portal/nrcs/main/co/snow/>