



United States Department of Agriculture

Colorado Snow Surveys

Water Availability Task Force Meeting

September 19th, 2023

NRCS Snow Survey and Water Supply Forecasting Program

Karl Wetlaufer

Hydrologist

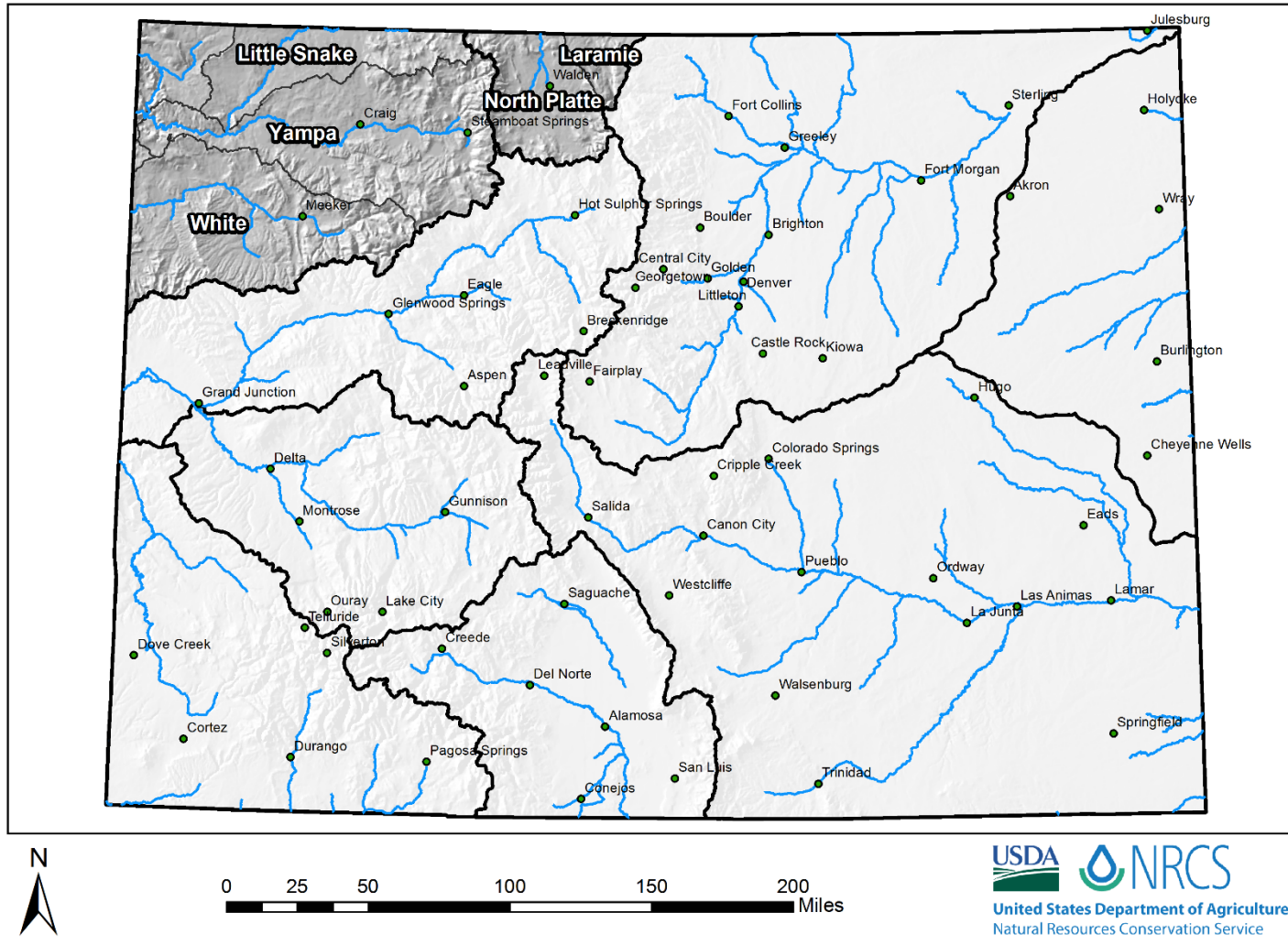
Karl.Wetlaufer@usda.gov

720-544-2853

<http://www.nrcs.usda.gov/wps/portal/nrcs/main/co/snow/>

Major Basin Summary

Yampa, White, and North Platte River Basins





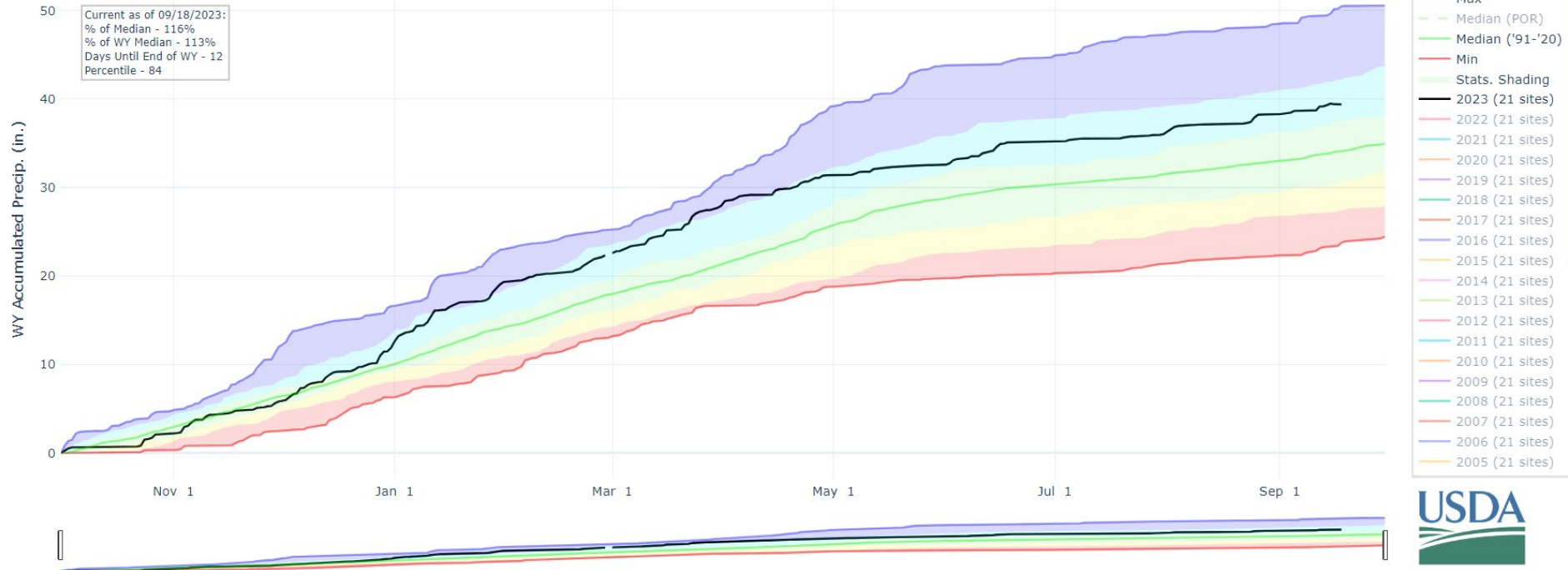
Colorado Snow Surveys

PRECIPITATION IN YAMPA-WHITE-LITTLE SNAKE

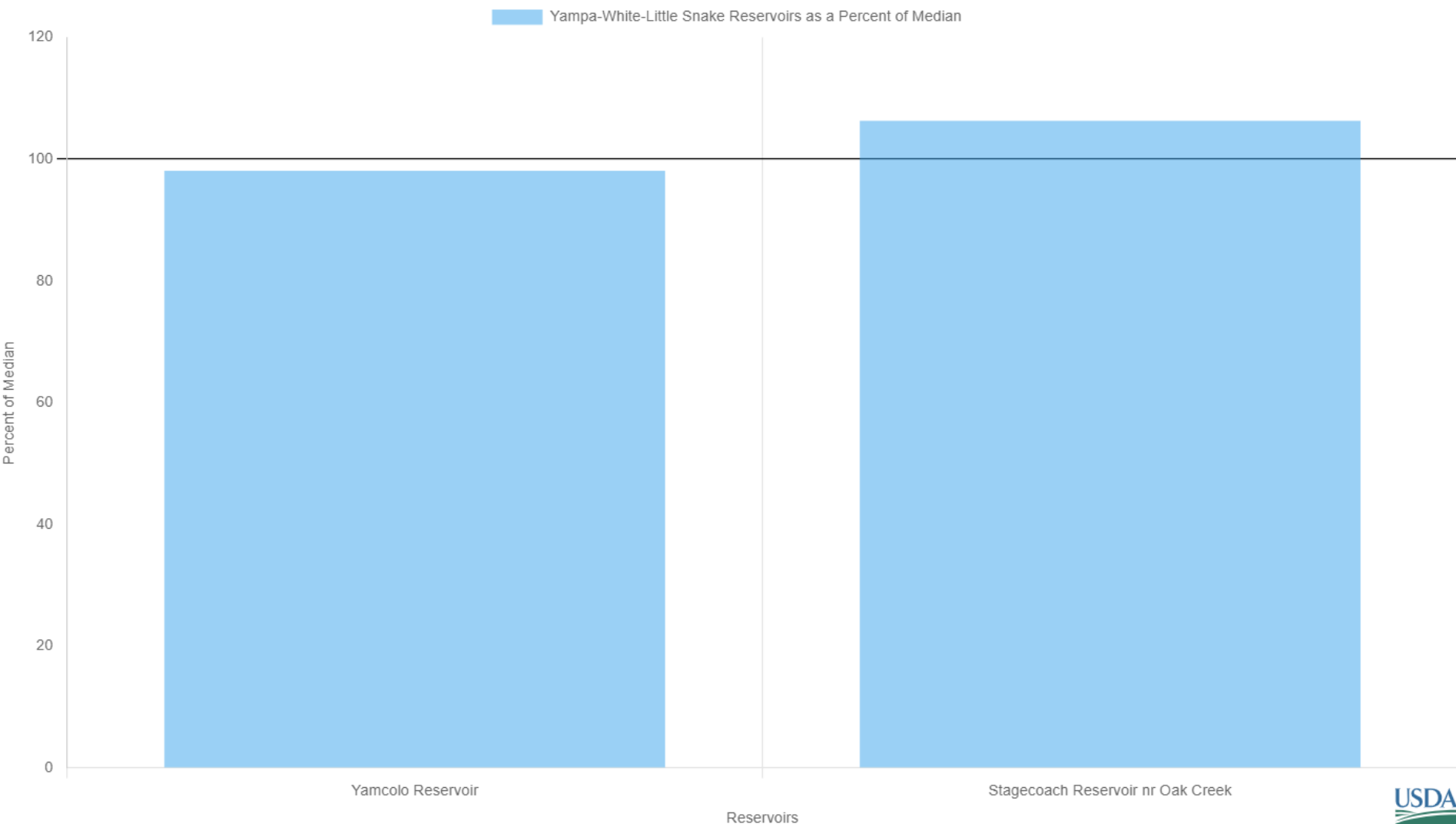
Reset Range

[Link to data: CSV / JSON](#)

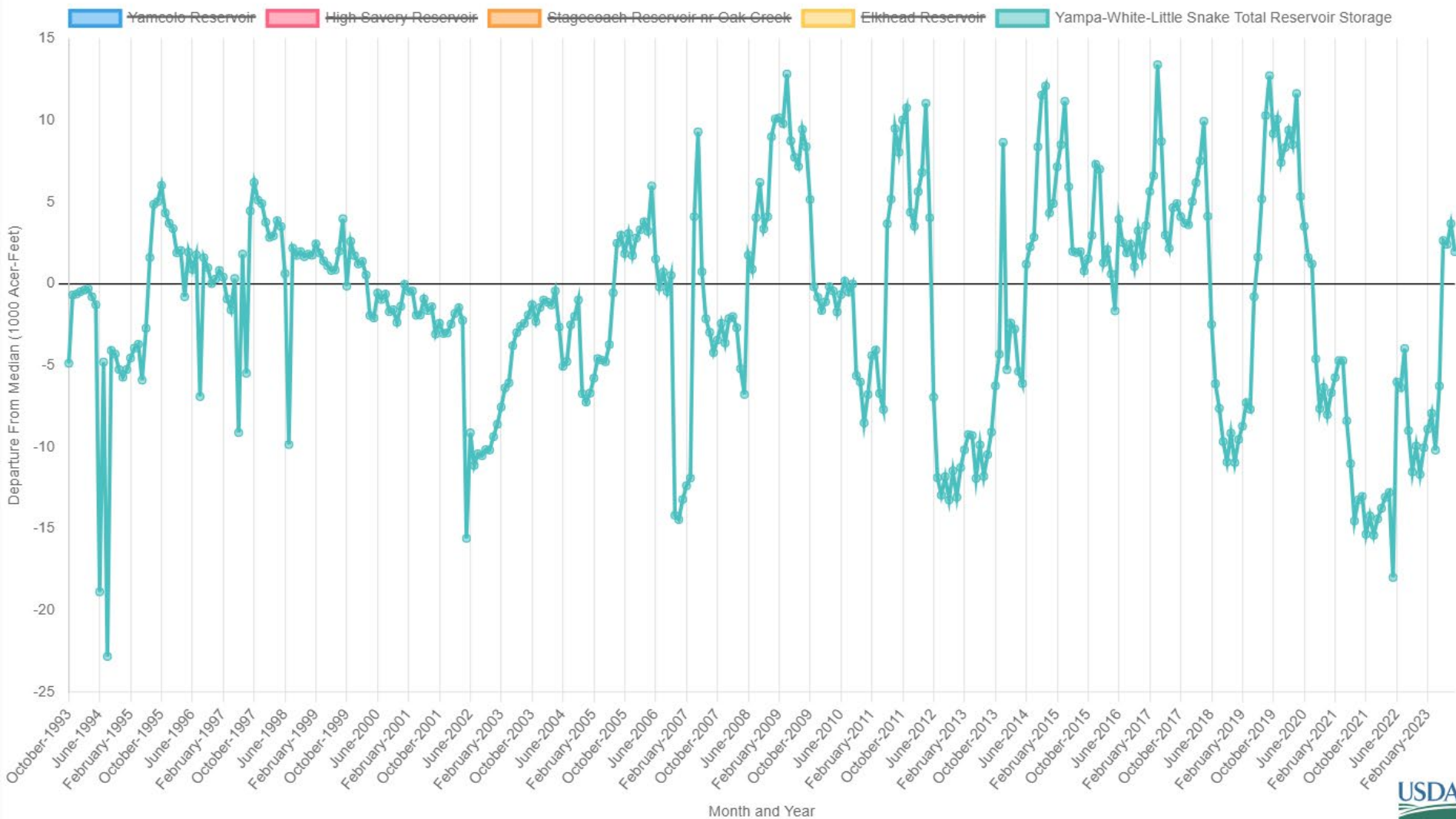
[Station List](#)



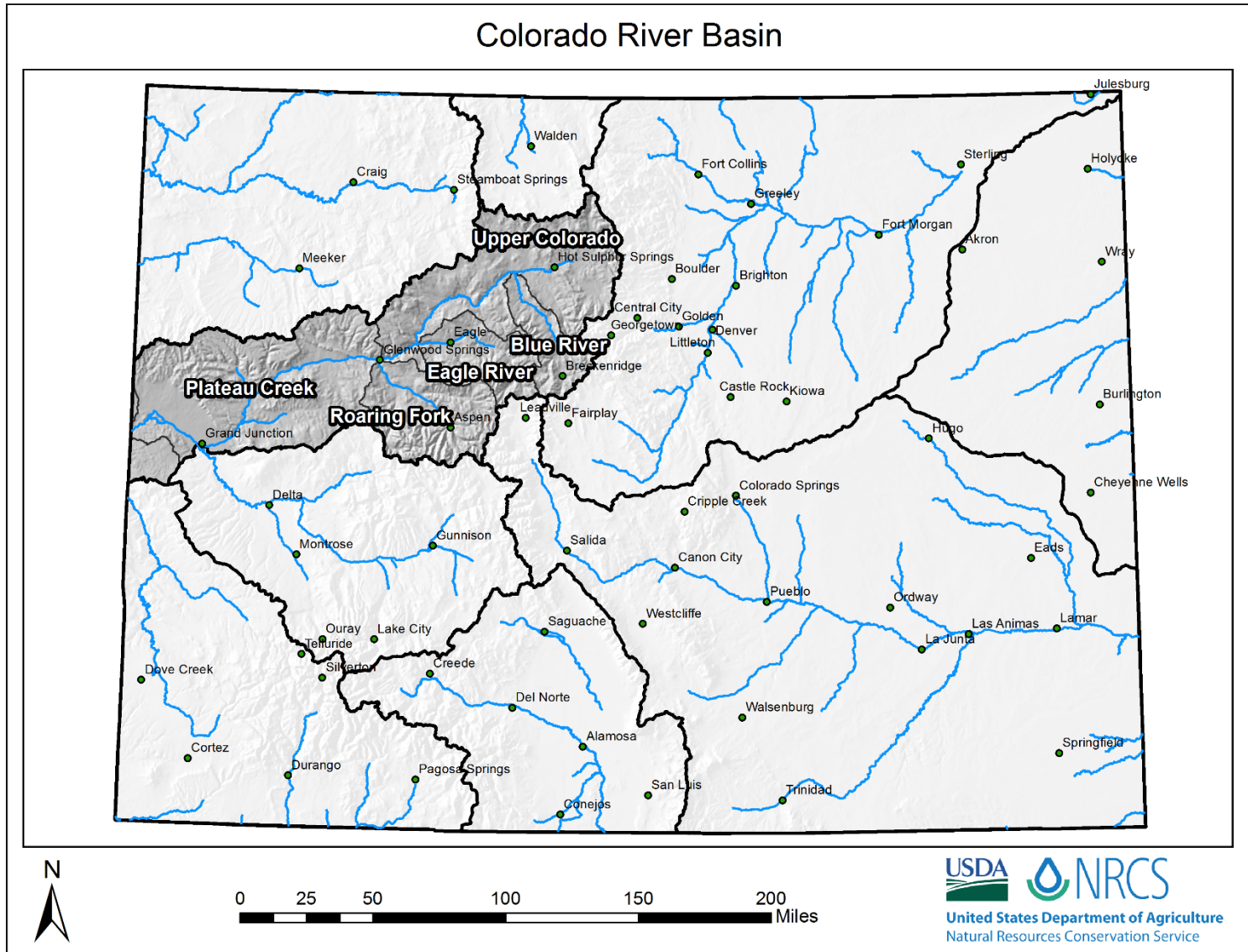
Yampa-White-Little Snake Reservoir Storage Summary for September 1st 2023



Yampa-White-Little Snake Departure From Median Timeseries Plot



Major Basin Summary





Colorado Snow Surveys

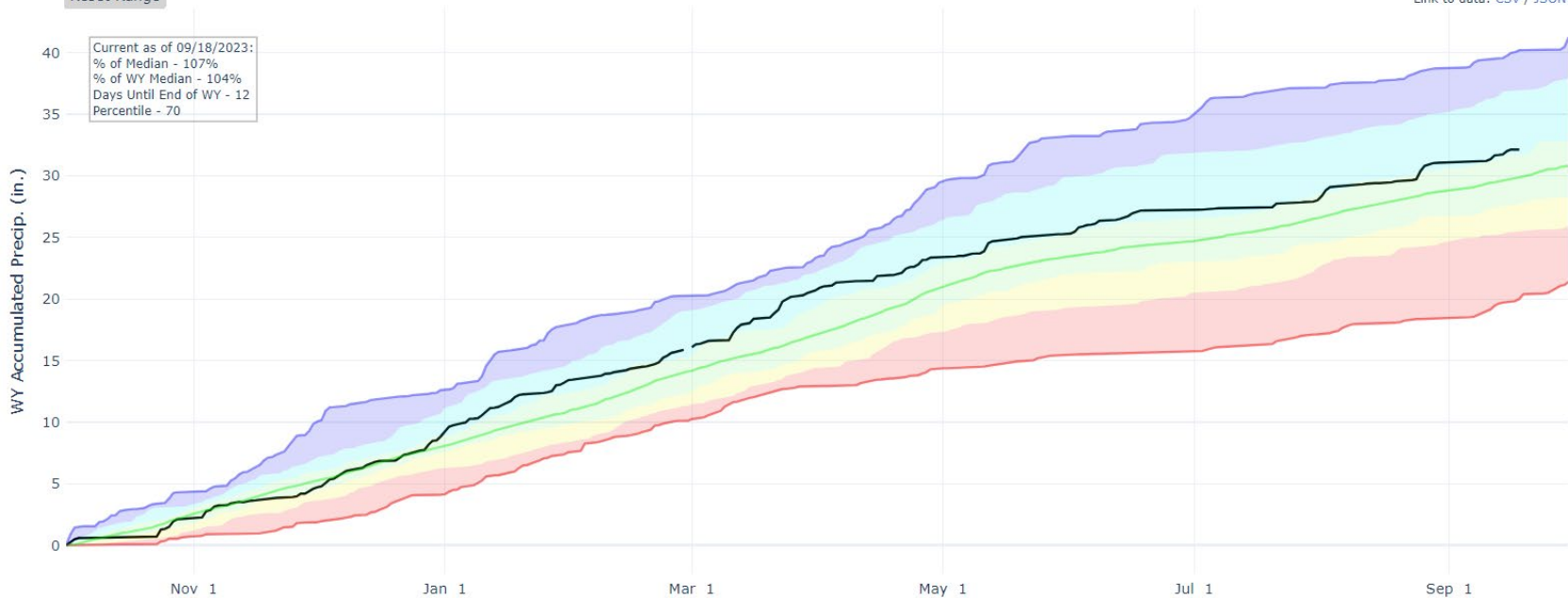
PRECIPITATION IN COLORADO HEADWATERS

Reset Range

[Link to data: CSV / JSON](#)

Station List

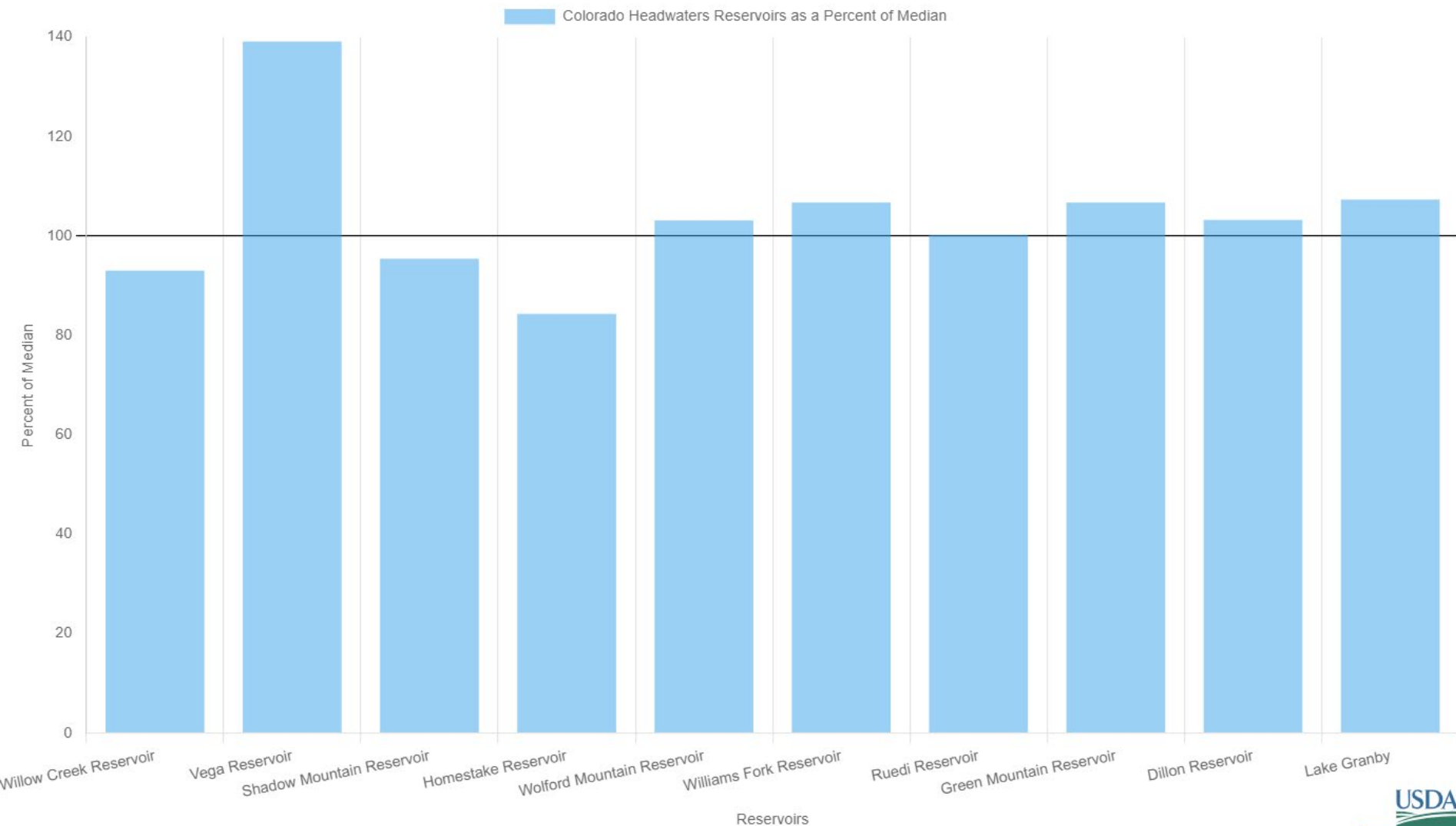
Current as of 09/18/2023:
% of Median - 107%
% of WY Median - 104%
Days Until End of WY - 12
Percentile - 70



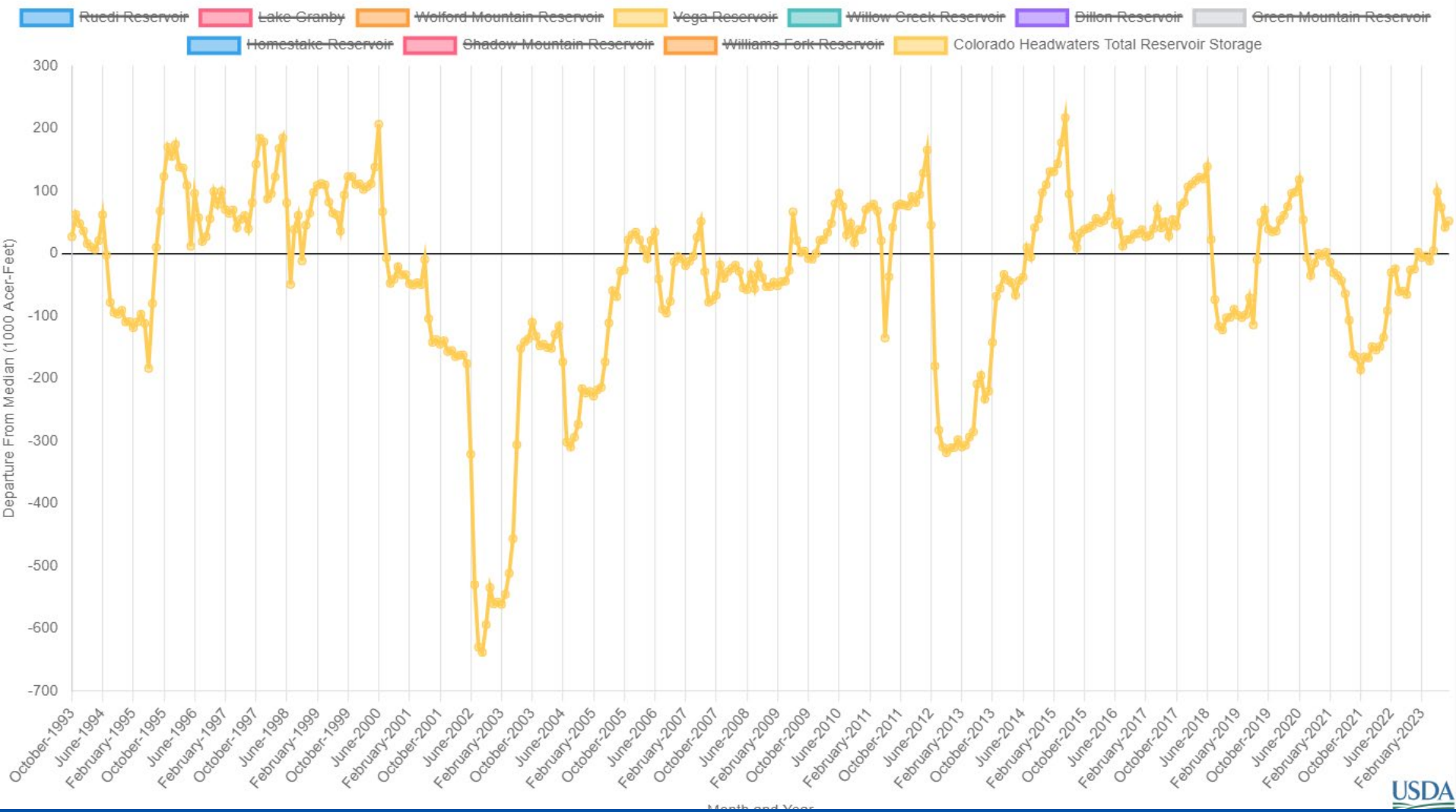
- Max
- Median (POR)
- Median ('91-'20)
- Min
- Stats. Shading
- 2023 (31 sites)
- 2022 (31 sites)
- 2021 (31 sites)
- 2020 (31 sites)
- 2019 (31 sites)
- 2018 (31 sites)
- 2017 (31 sites)
- 2016 (31 sites)
- 2015 (31 sites)
- 2014 (31 sites)
- 2013 (31 sites)
- 2012 (31 sites)
- 2011 (31 sites)
- 2010 (31 sites)
- 2009 (31 sites)
- 2008 (30 sites)
- 2007 (30 sites)
- 2006 (30 sites)
- 2005 (30 sites)



Colorado Headwaters Reservoir Storage Summary for September 1st 2023



Colorado Headwaters Departure From Median Timeseries Plot



A map of Colorado showing its major river basins and cities. The basins are labeled in bold black text: Cache La Poudre, Big Thompson, Boulder-St Vrain, Clear Creek, and Upper South Platte. The basins are shaded in light gray. Major cities are marked with green dots and labeled. The map also shows state boundaries and a network of blue lines representing rivers and streams.

Cache La Poudre

Big Thompson

Boulder-St Vrain

Clear Creek

Upper South Platte

Cities shown include: Walden, Craig, Steamboat Springs, Fort Collins, Greeley, Sterling, Holyoke, Meeker, Hot Sulphur Springs, Boulder, Brighton, Fort Morgan, Akron, Wray, Eagle, Glenwood Springs, Central City, Golden, Denver, Littleton, Breckenridge, Castle Rock, Kiowa, Burlington, Aspen, Leadville, Fairplay, Hugo, Cheyenne Wells, Grand Junction, Delta, Montrose, Gunnison, Salida, Cripple Creek, Colorado Springs, Canon City, Pueblo, Eads, Ordway, Las Animas, Lamar, Oury, Lake City, Telluride, Silverton, Creede, Dove Creek, Cortez, Durango, Pagosa Springs, Del Norte, Alamosa, Walsenburg, San Luis, Trinidad, Conejos, and Springfield.



0 25 50 100 150 200 Miles



Colorado Snow Surveys

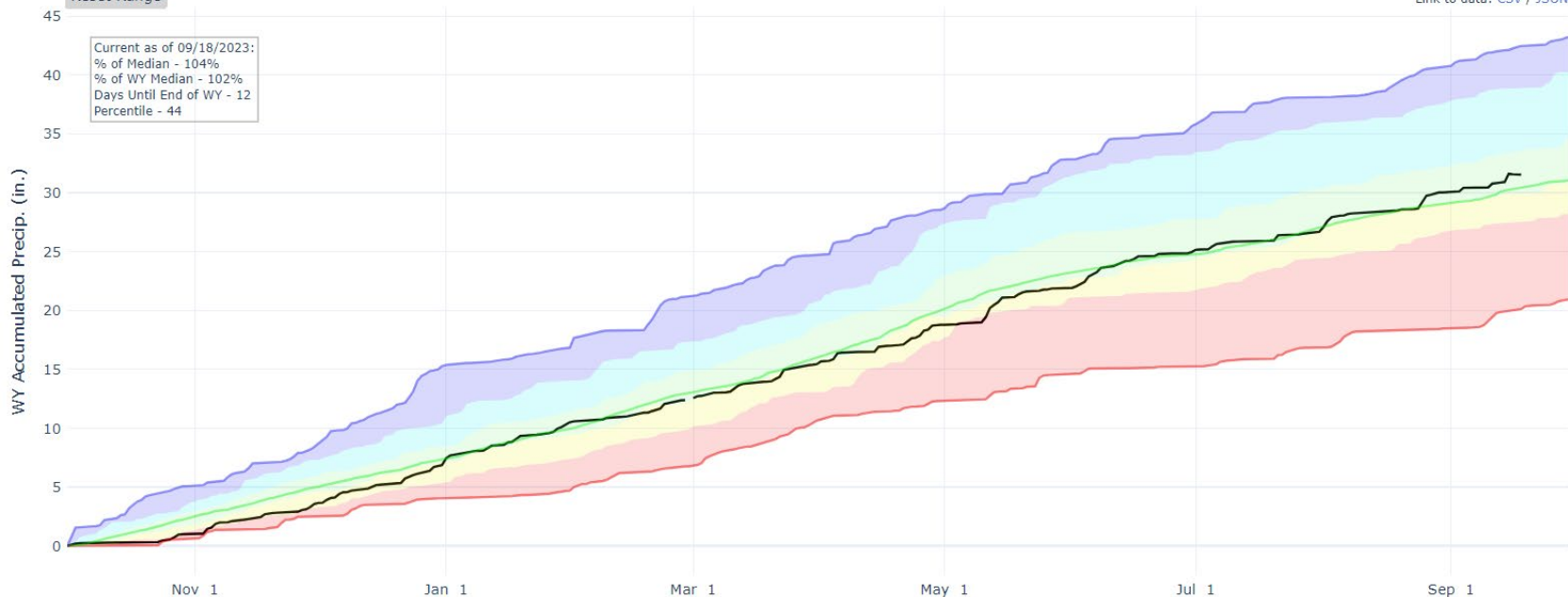
PRECIPITATION IN SOUTH PLATTE

Reset Range

[Link to data: CSV / JSON](#)

[Station List](#)

Current as of 09/18/2023:
% of Median - 104%
% of WY Median - 102%
Days Until End of WY - 12
Percentile - 44



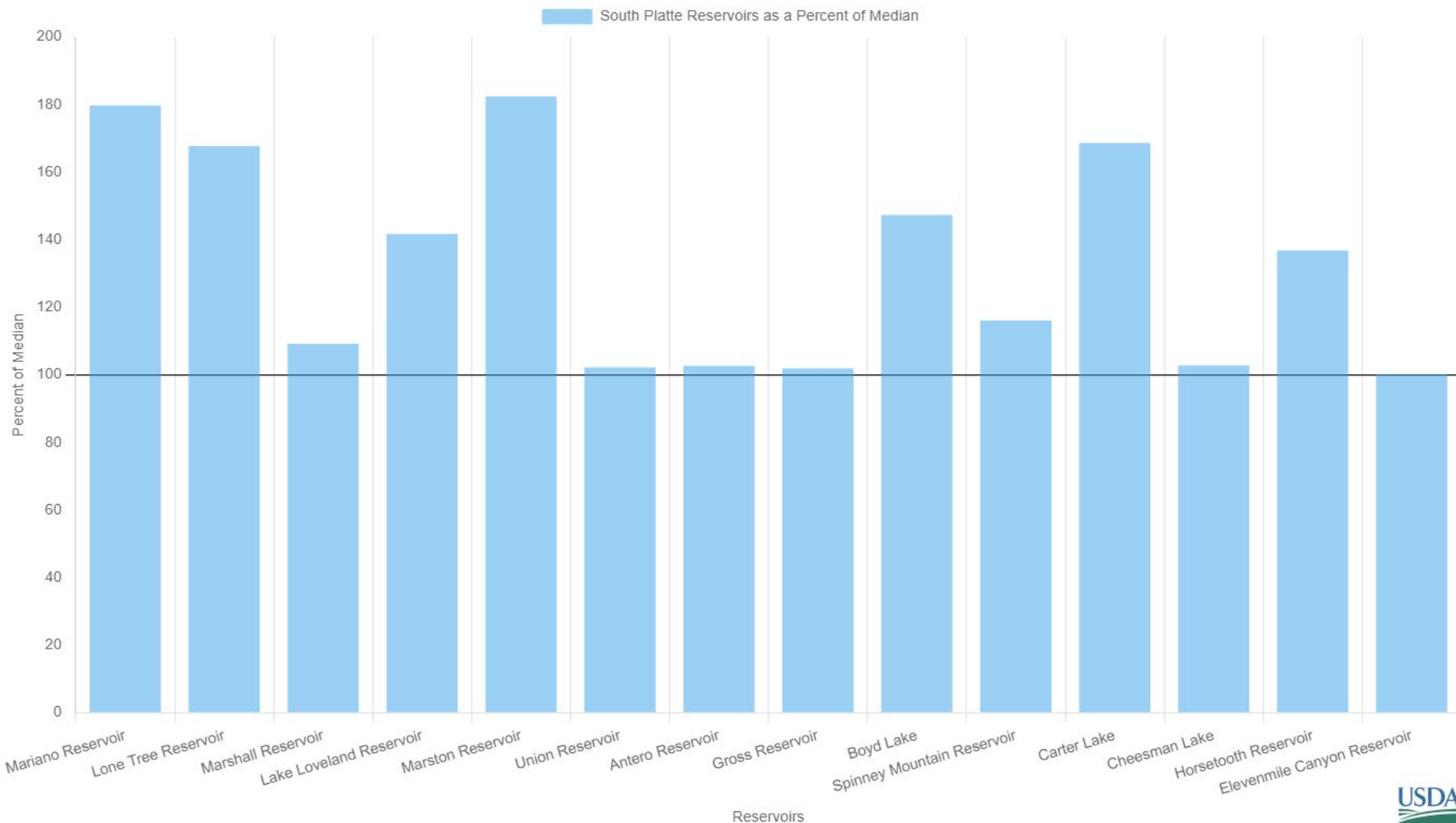
- Max
- Median (POR)
- Median ('91-'20)
- Min
- Stats. Shading
- 2023 (21 sites)
- 2022 (21 sites)
- 2021 (21 sites)
- 2020 (21 sites)
- 2019 (21 sites)
- 2018 (21 sites)
- 2017 (21 sites)
- 2016 (21 sites)
- 2015 (21 sites)
- 2014 (21 sites)
- 2013 (21 sites)
- 2012 (21 sites)
- 2011 (21 sites)
- 2010 (20 sites)
- 2009 (19 sites)
- 2008 (18 sites)
- 2007 (18 sites)
- 2006 (18 sites)
- 2005 (17 sites)



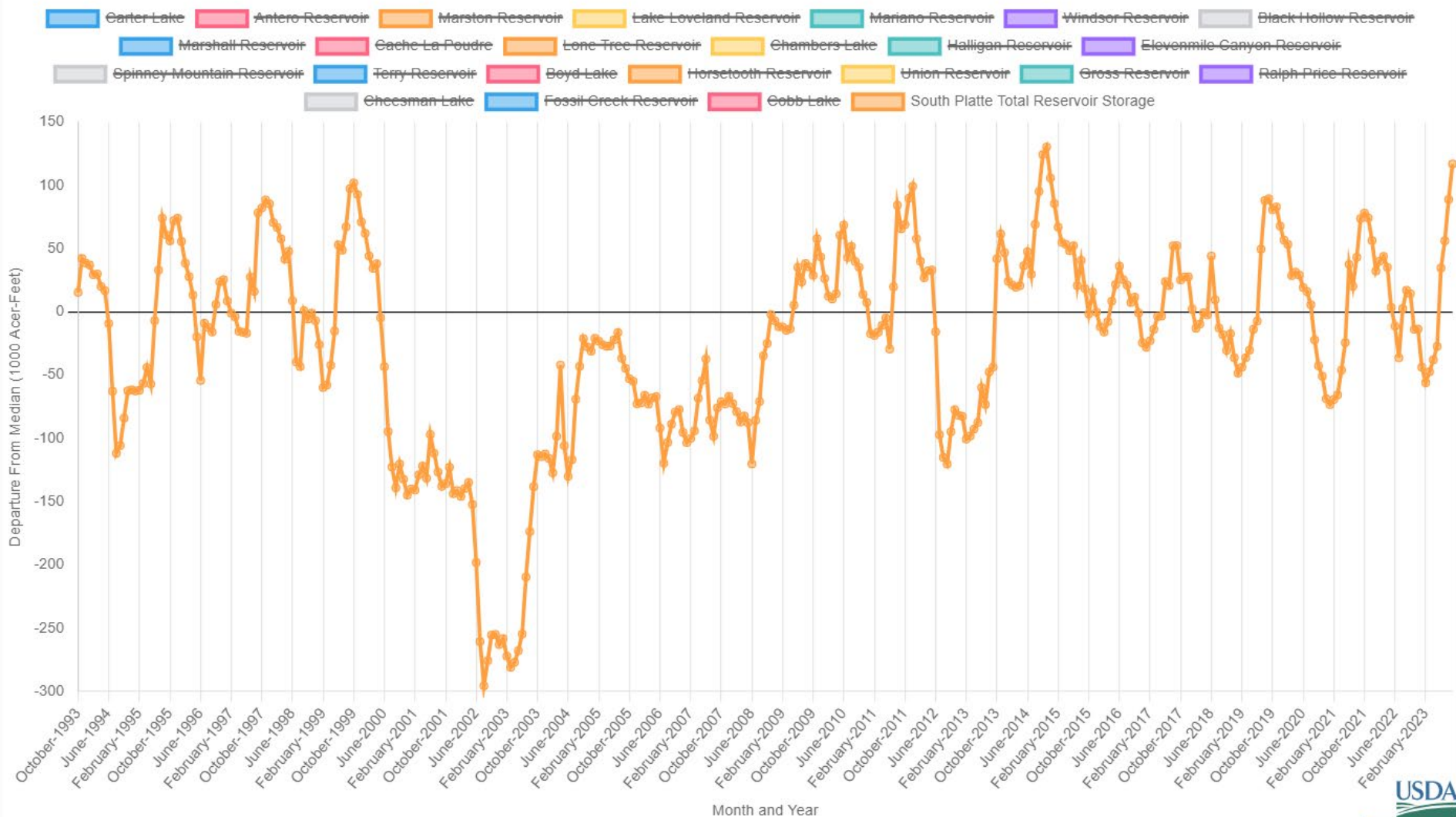


Colorado Snow Surveys

South Platte Reservoir Storage Summary for September 1st 2023



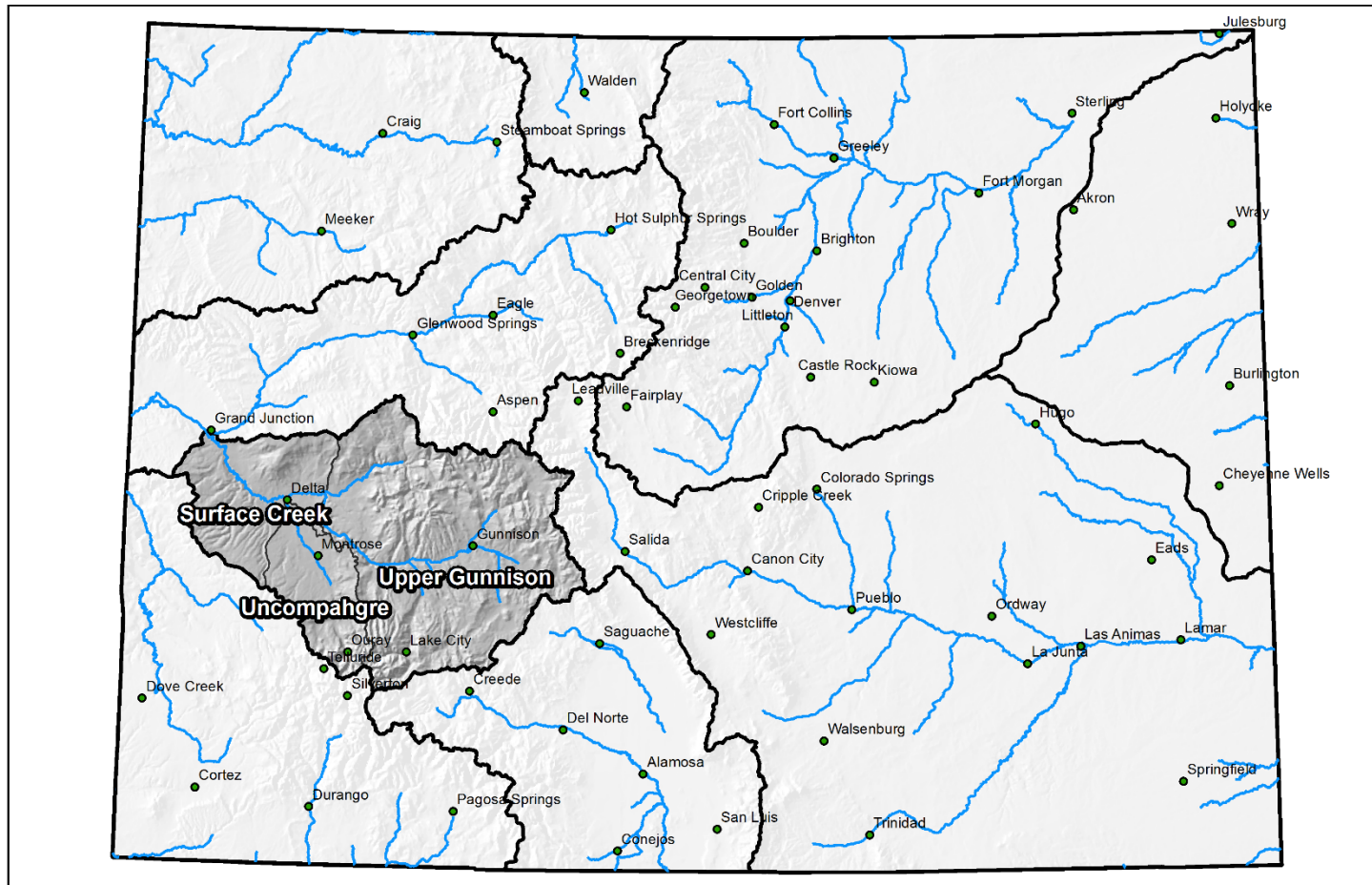
South Platte Departure From Median Timeseries Plot



Month and Year

Major Basin Summary

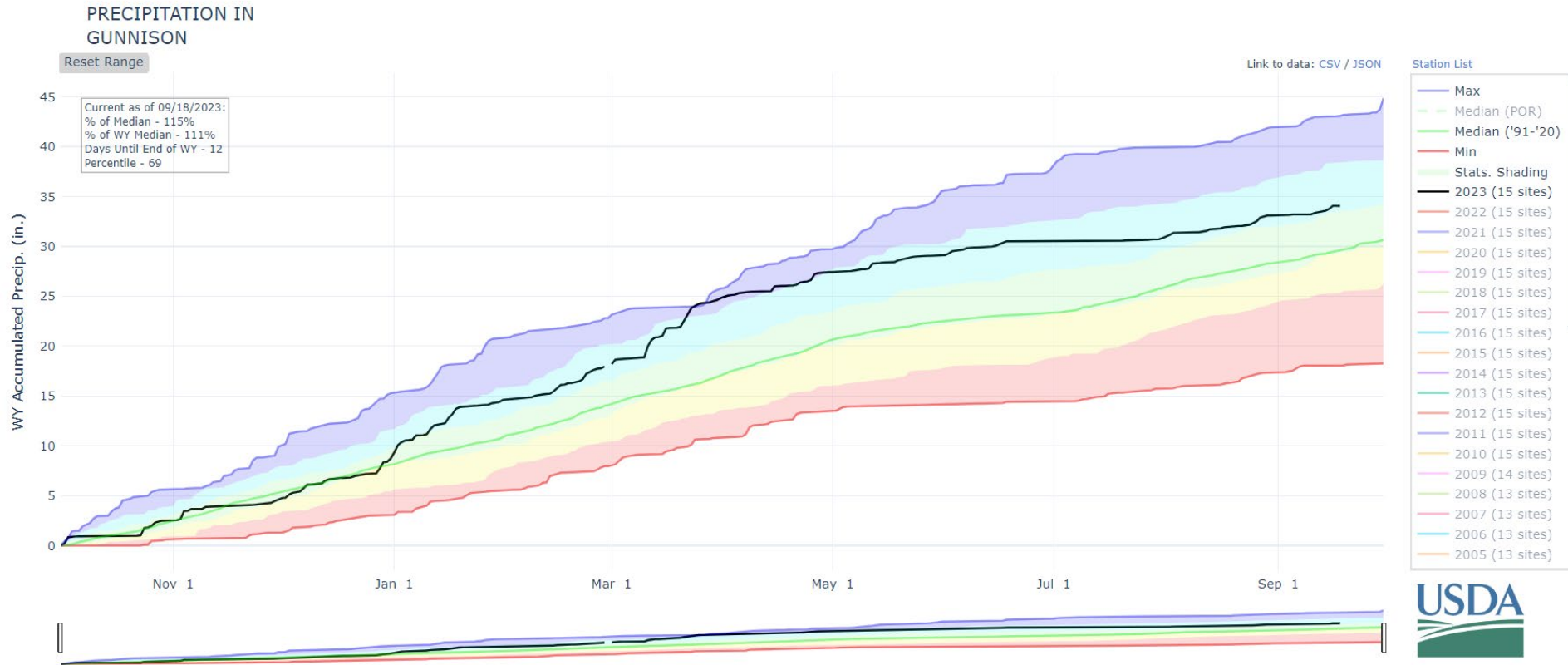
Gunnison River Basin



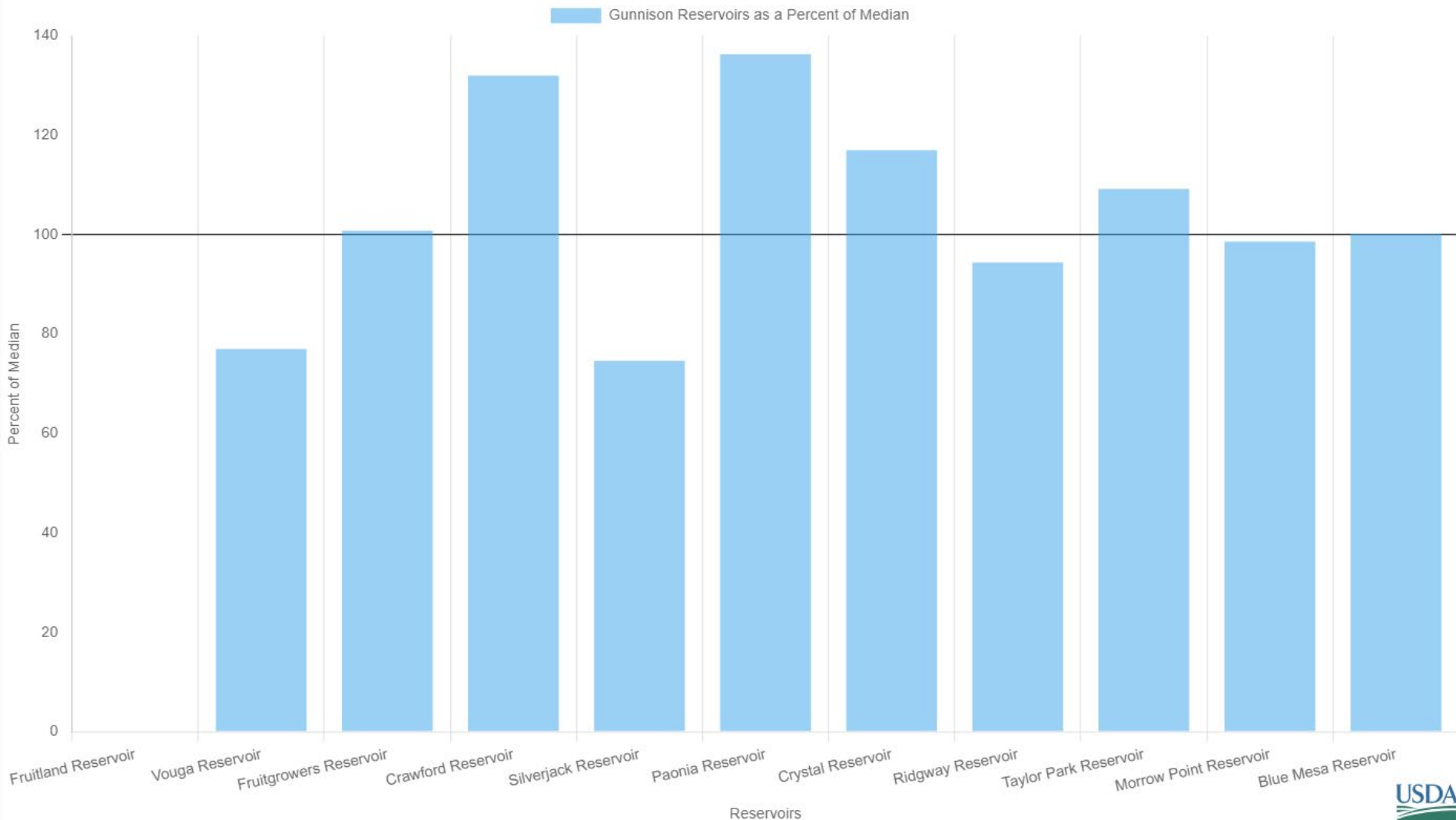
0 25 50 100 150 200 Miles



Colorado Snow Surveys



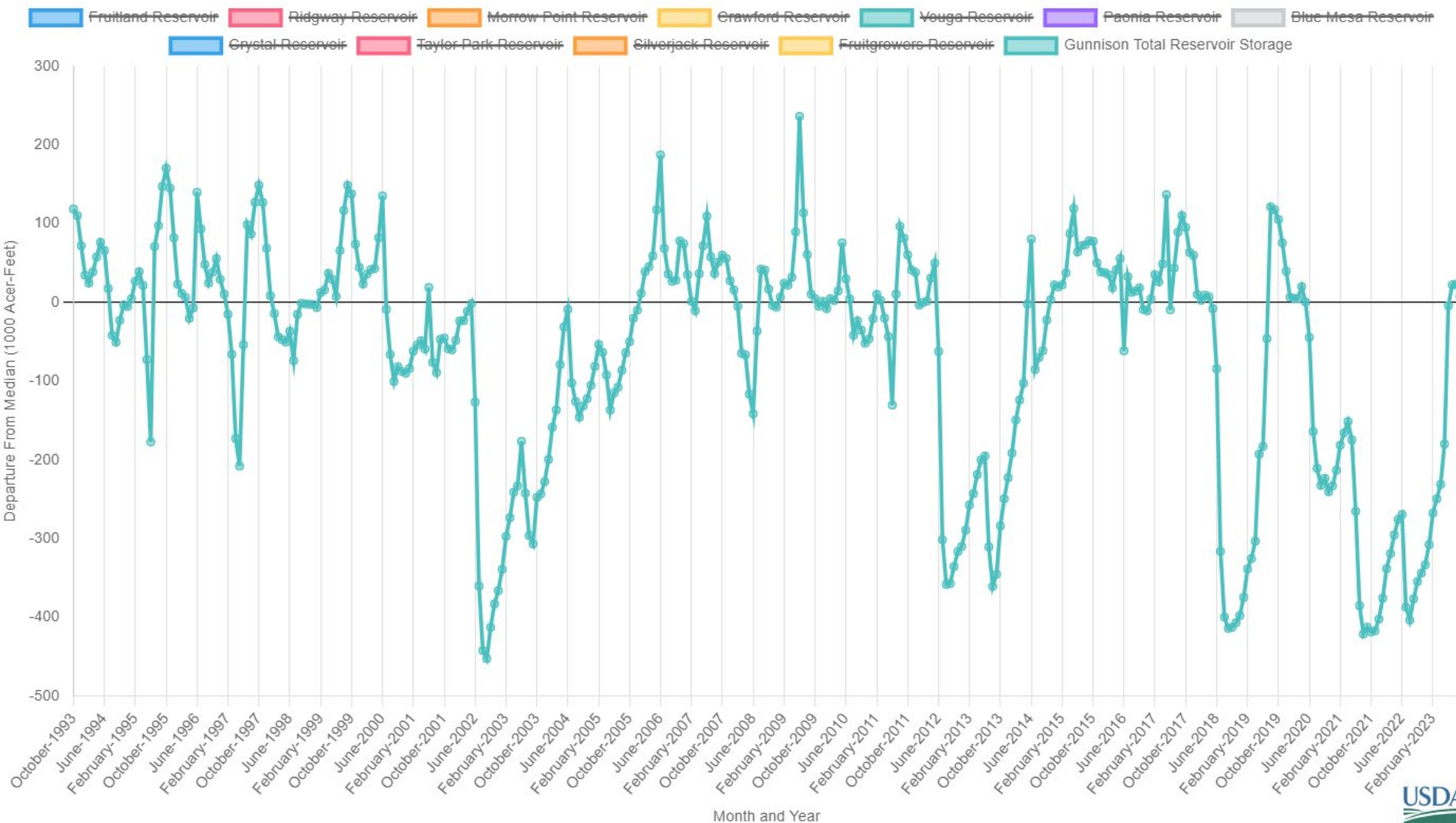
Gunnison Reservoir Storage Summary for September 1st 2023





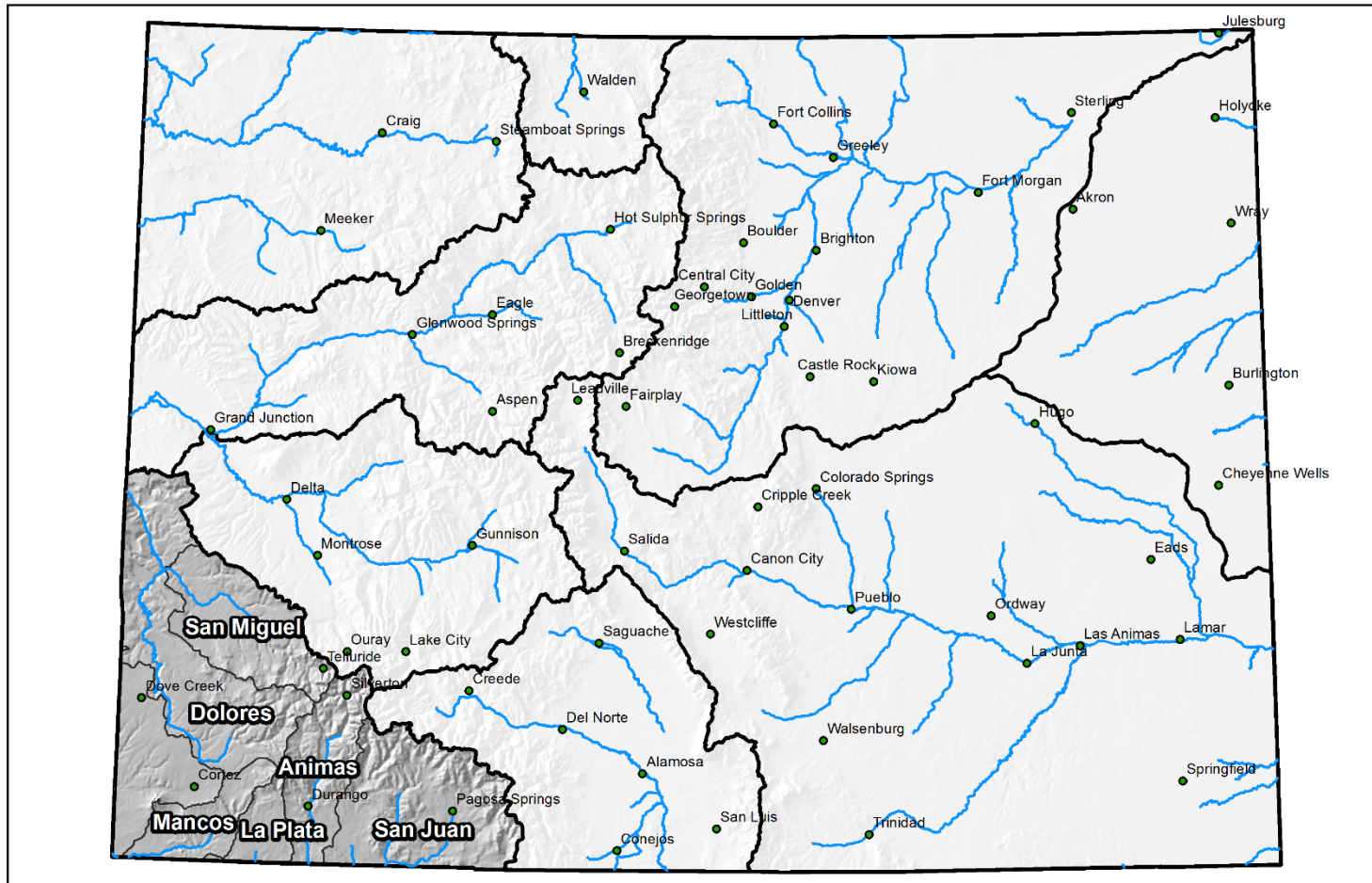
Colorado Snow Surveys

Gunnison Departure From Median Timeseries Plot



Major Basin Summary

San Miguel, Dolores, Animas, and San Juan River Basins



0 25 50 100 150 200 Miles



Colorado Snow Surveys

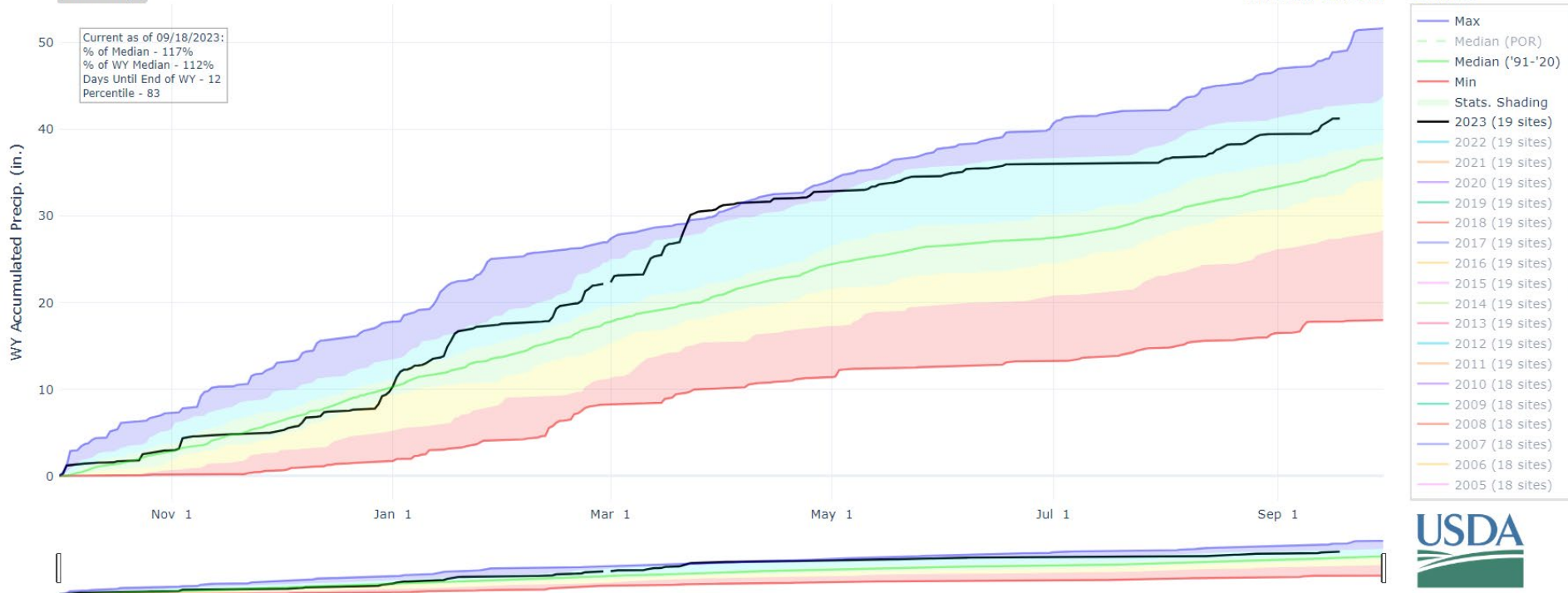
PRECIPITATION IN SAN MIGUEL-DOLORES-ANIMAS-SAN JUAN

Reset Range

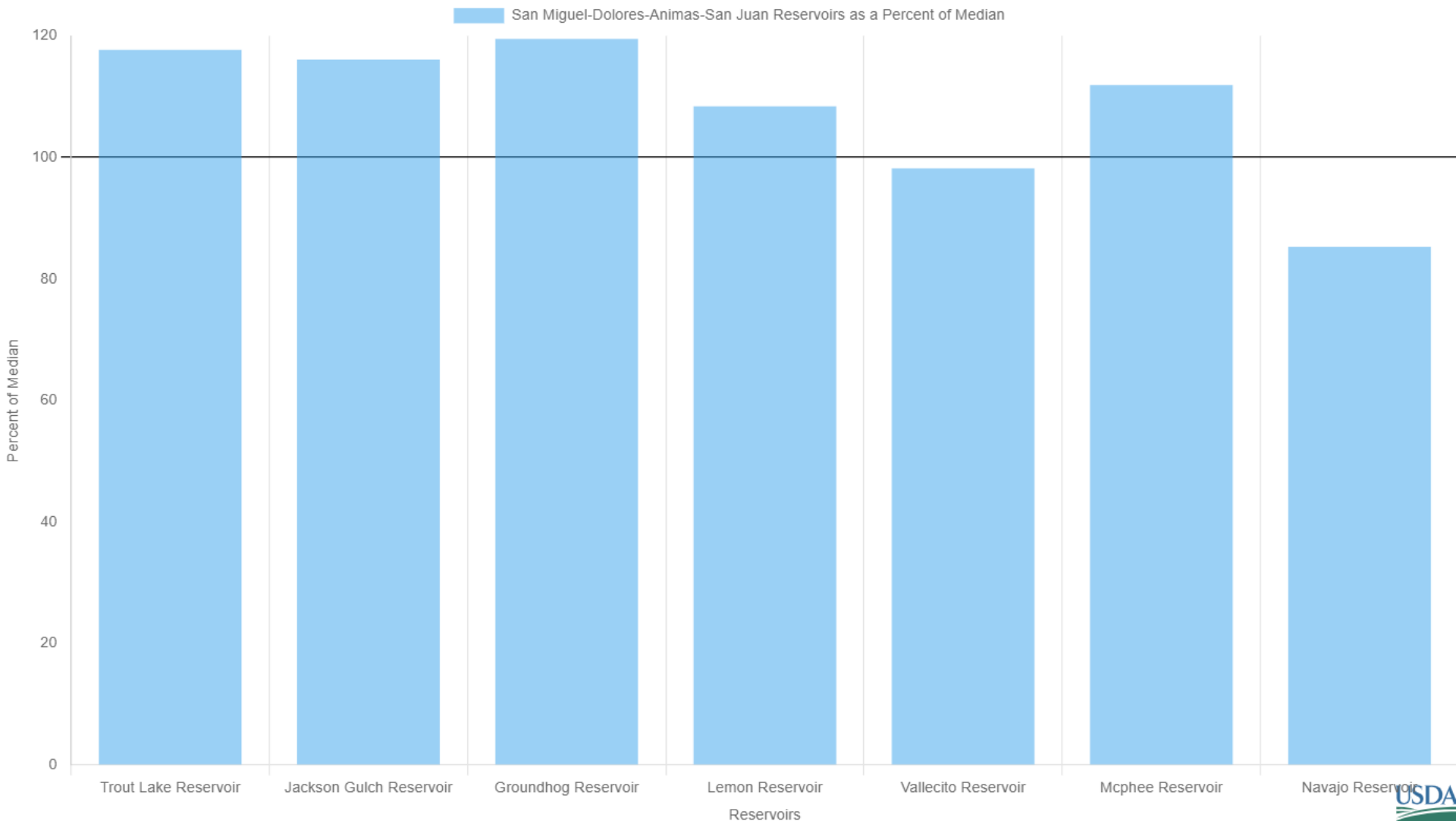
[Link to data: CSV / JSON](#)

Station List

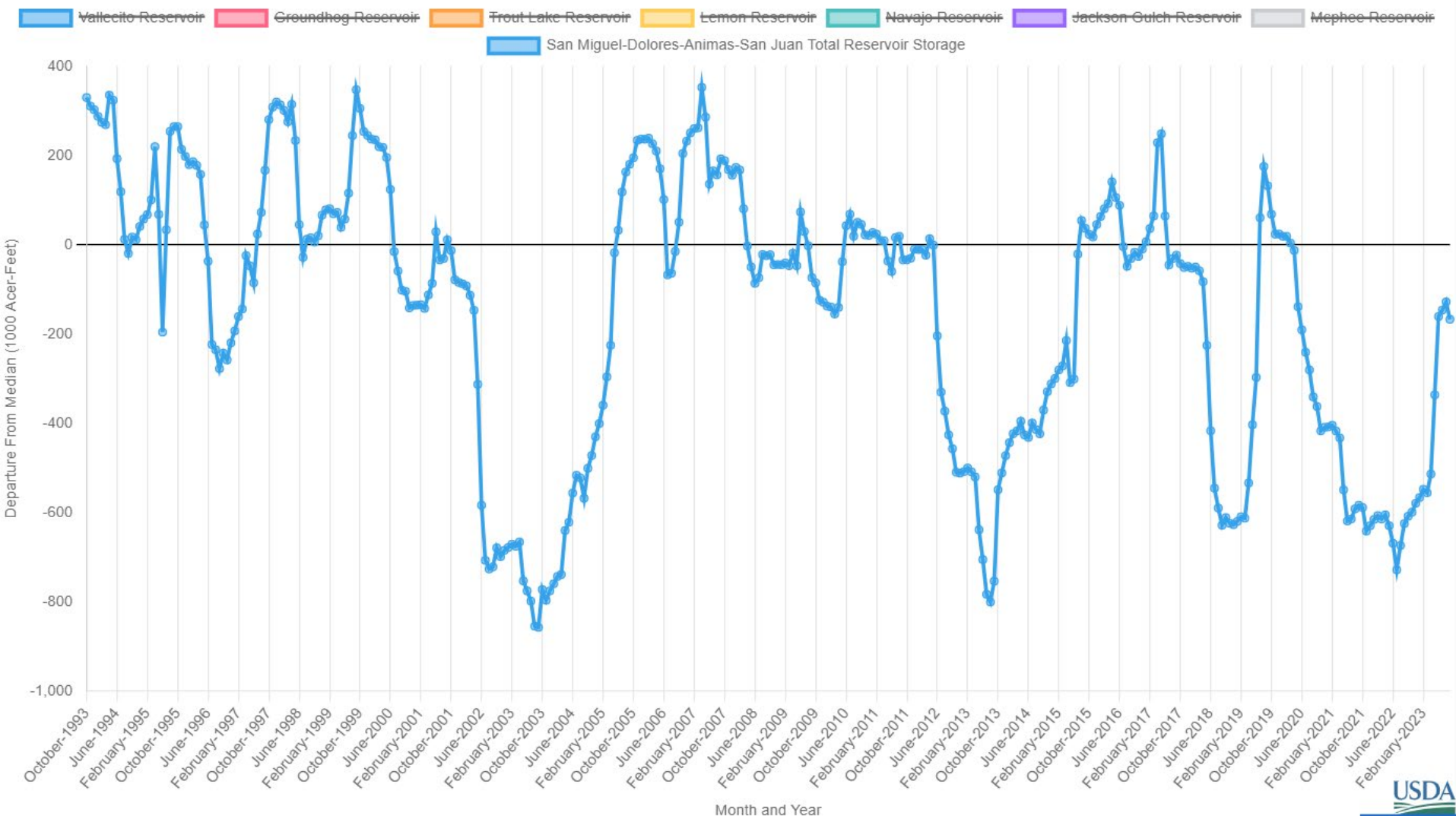
Current as of 09/18/2023:
% of Median - 117%
% of WY Median - 112%
Days Until End of WY - 12
Percentile - 83



San Miguel-Dolores-Animas-San Juan Reservoir Storage Summary for September 1st 2023

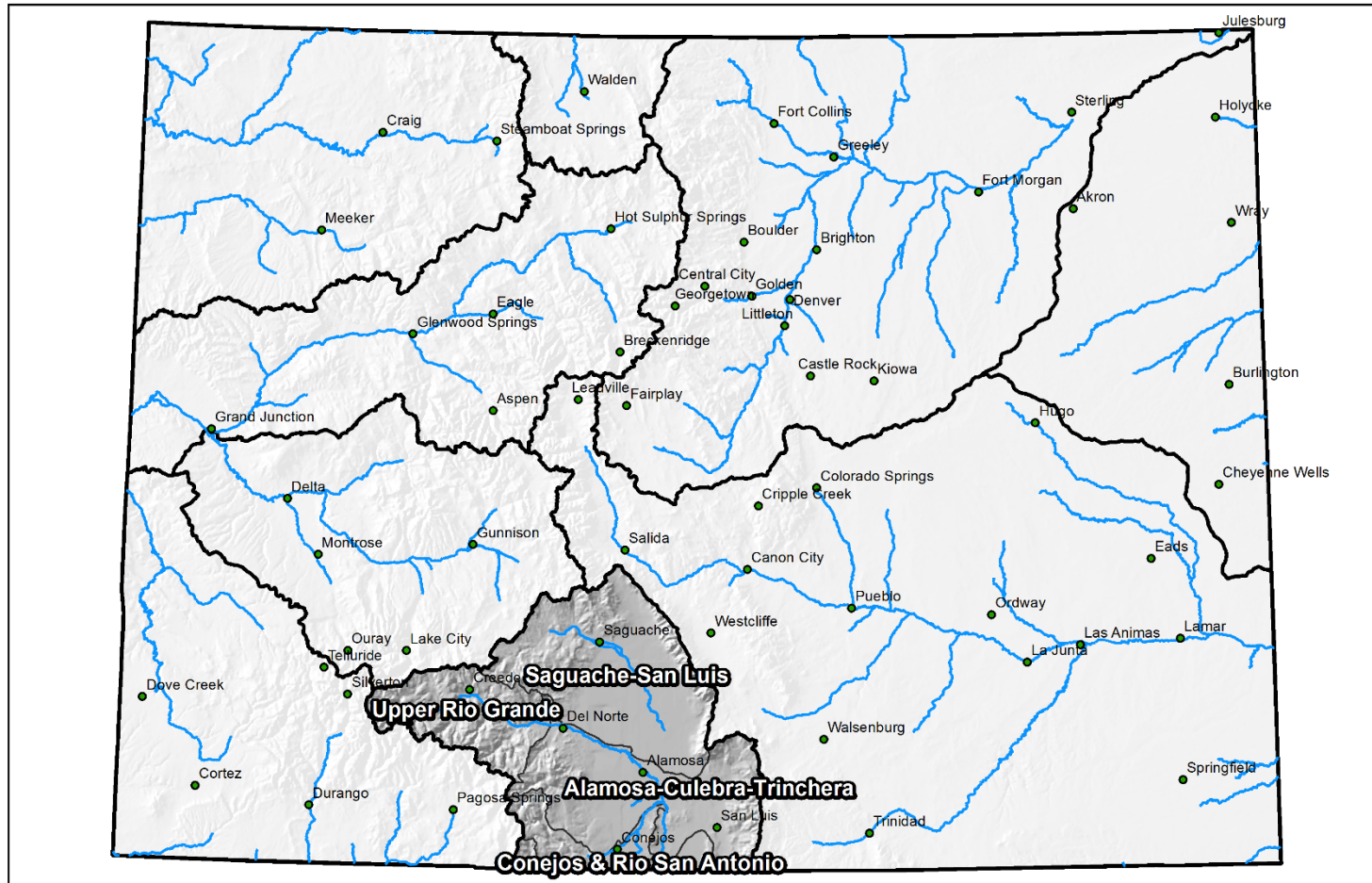


San Miguel-Dolores-Animas-San Juan Departure From Median Timeseries Plot



Major Basin Summary

Upper Rio Grande River Basin



0 25 50 100 150 200 Miles



Colorado Snow Surveys

PRECIPITATION IN UPPER RIO GRANDE

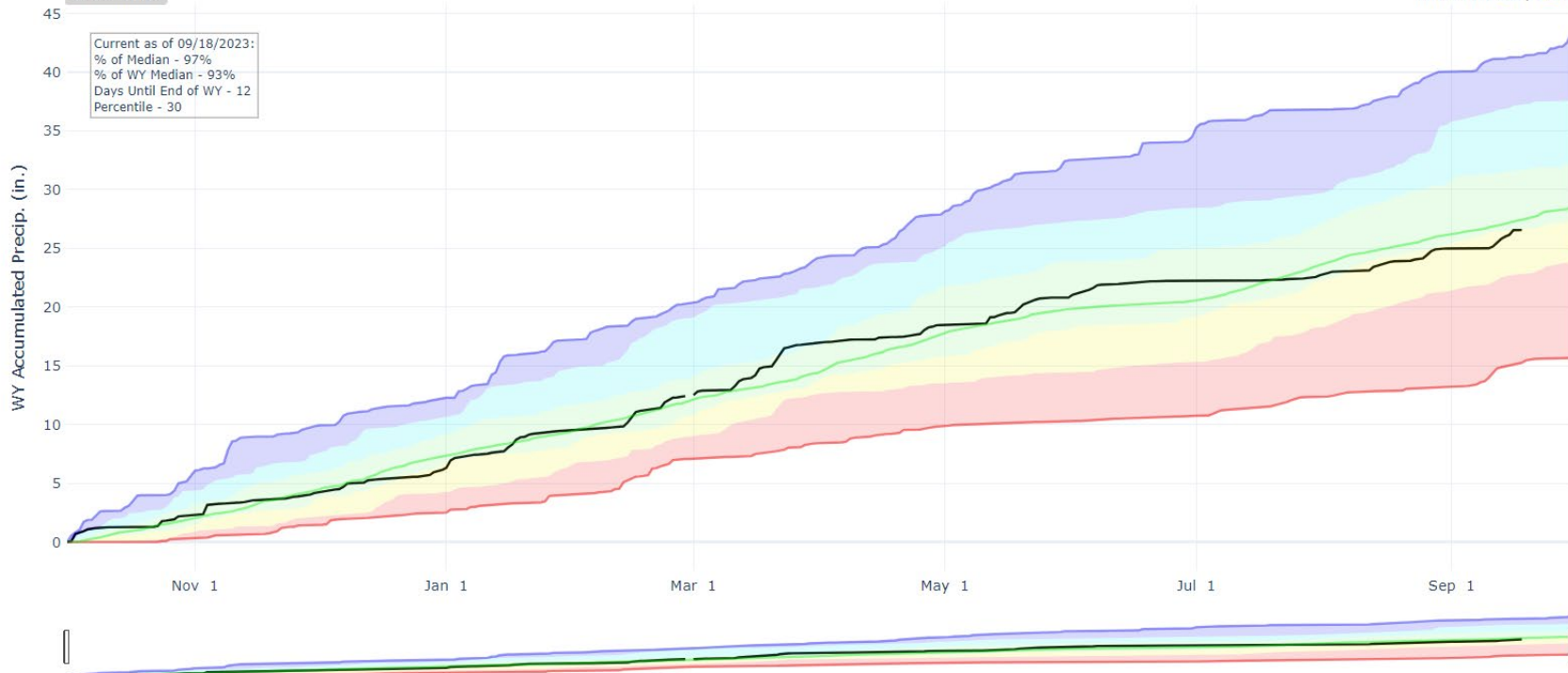
Reset Range

[Link to data: CSV / JSON](#)

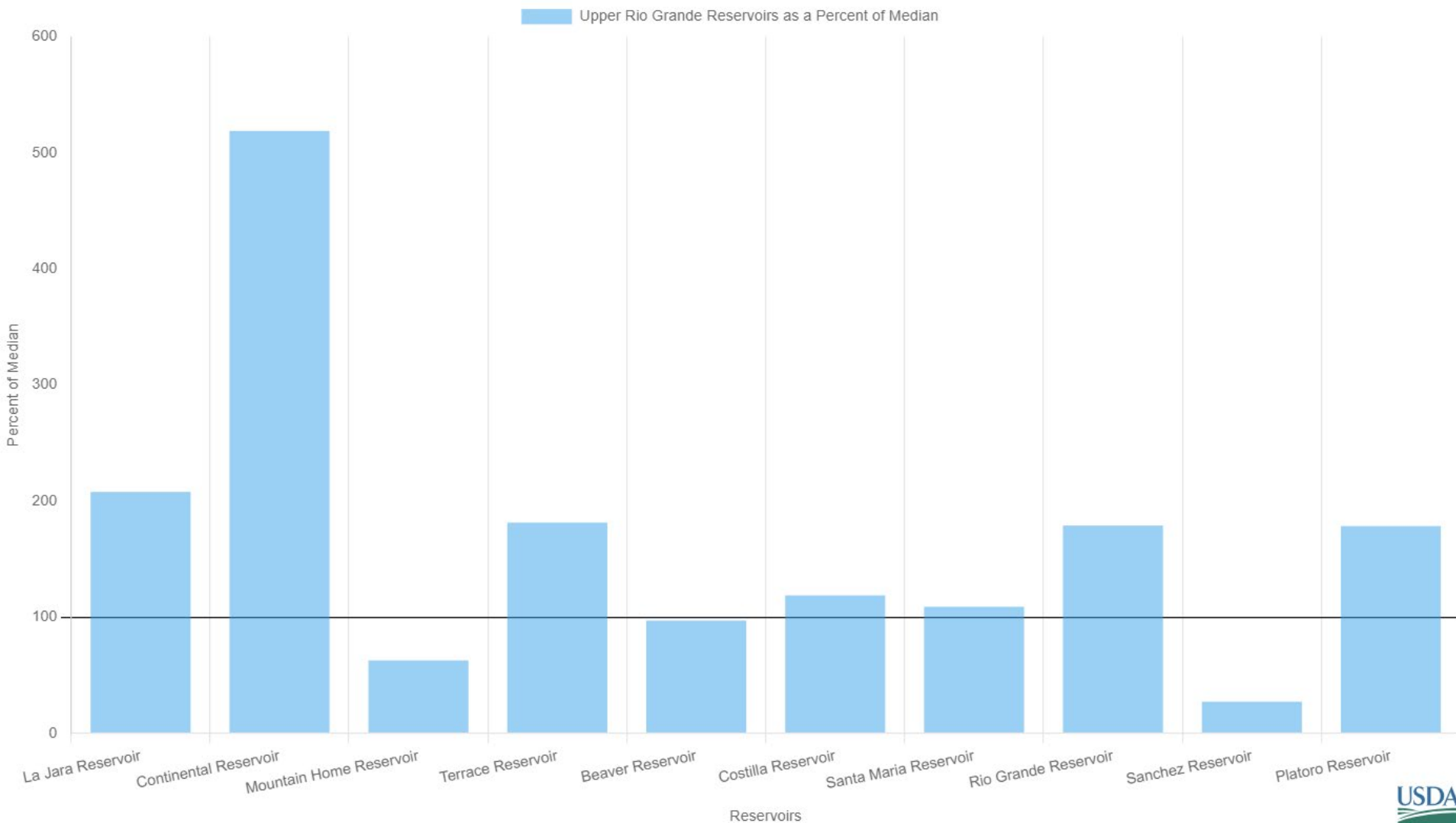
Current as of 09/18/2023:
% of Median - 97%
% of WY Median - 93%
Days Until End of WY - 12
Percentile - 30

Station List

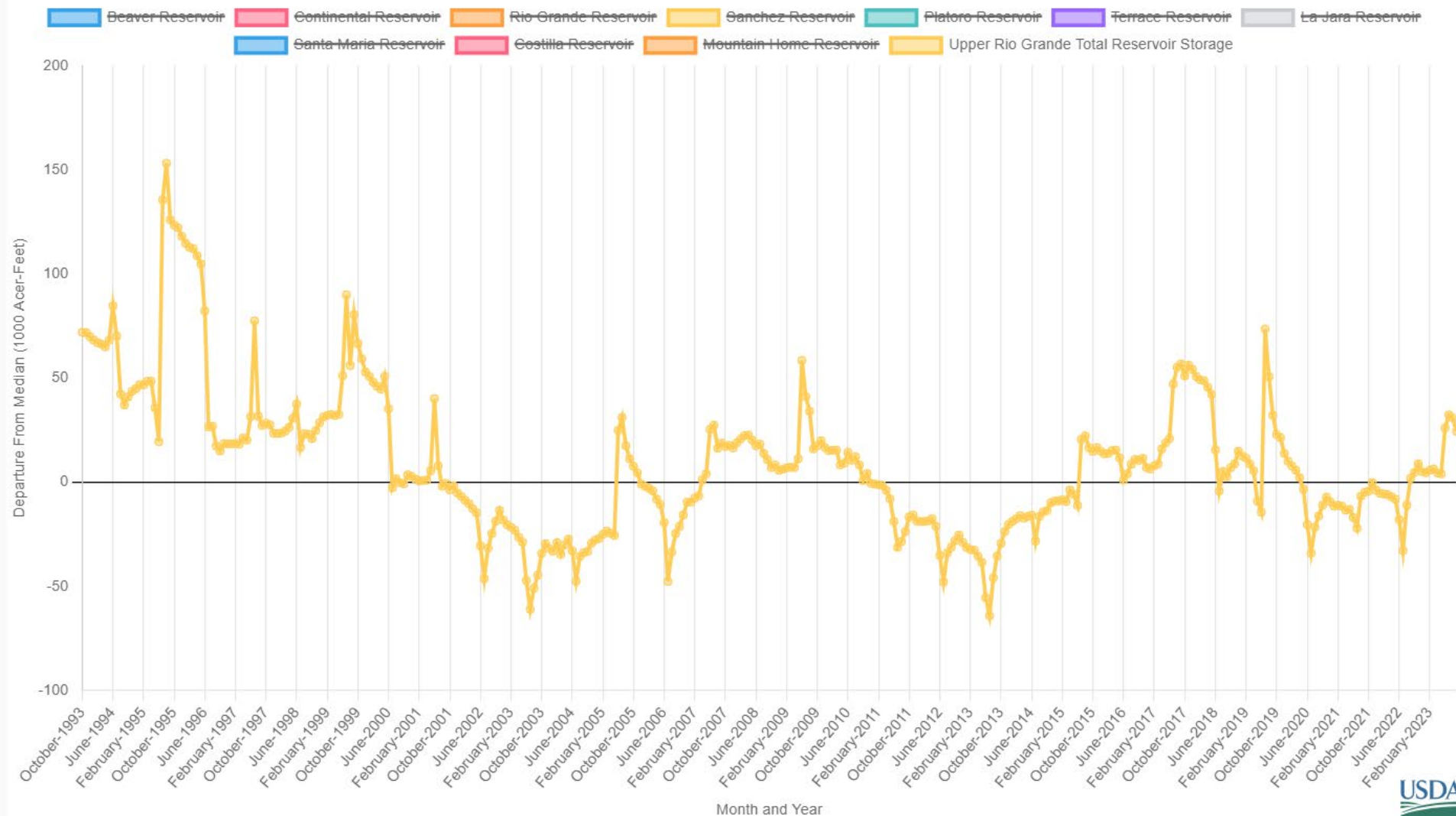
- Max
- Median (POR)
- Median ('91-'20)
- Min
- Stats. Shading
- 2023 (18 sites)
- 2022 (18 sites)
- 2021 (18 sites)
- 2020 (18 sites)
- 2019 (18 sites)
- 2018 (18 sites)
- 2017 (18 sites)
- 2016 (18 sites)
- 2015 (18 sites)
- 2014 (18 sites)
- 2013 (18 sites)
- 2012 (18 sites)
- 2011 (18 sites)
- 2010 (17 sites)
- 2009 (17 sites)
- 2008 (15 sites)
- 2007 (14 sites)
- 2006 (14 sites)
- 2005 (14 sites)



Upper Rio Grande Reservoir Storage Summary for September 1st 2023

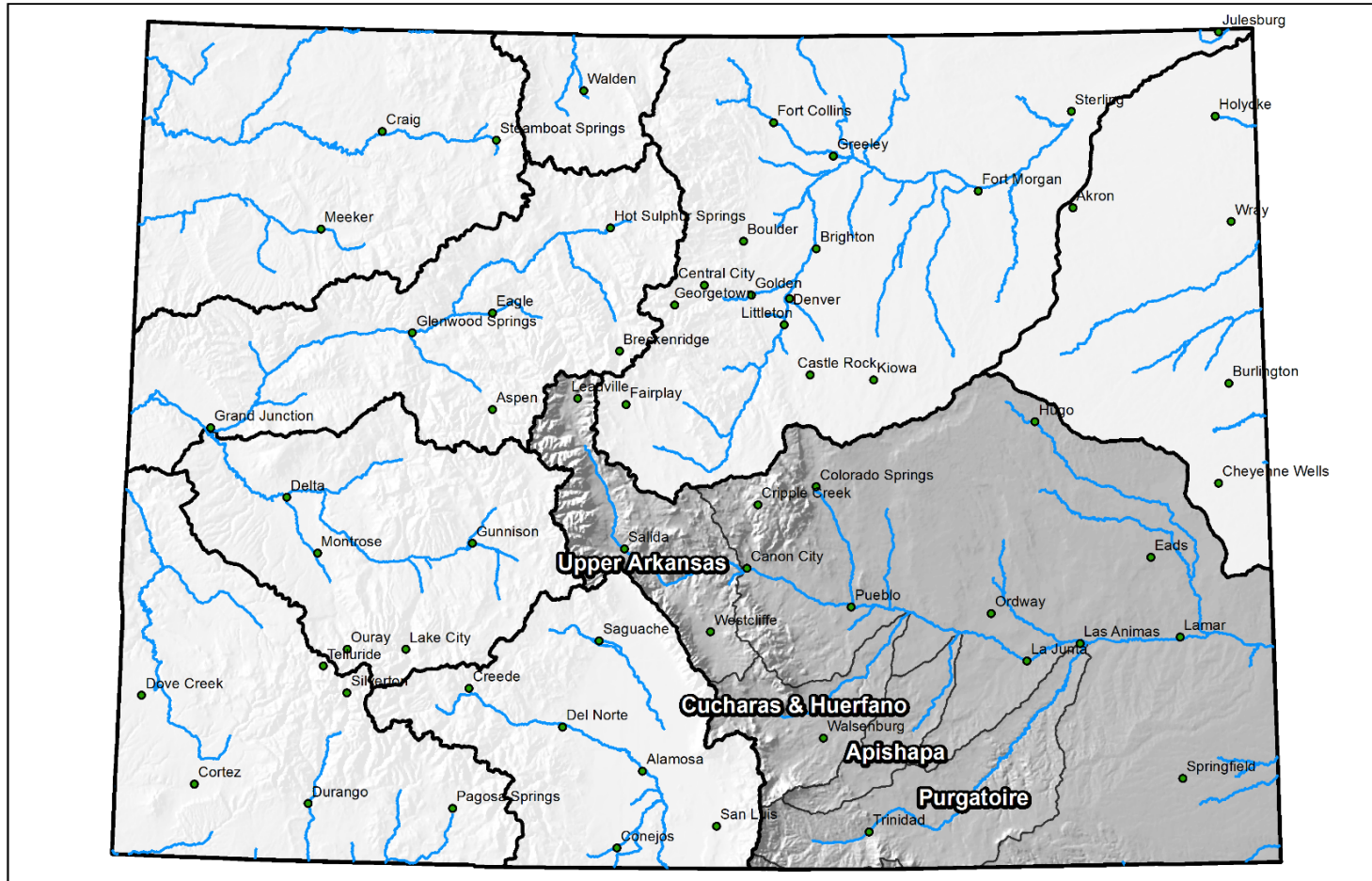


Upper Rio Grande Departure From Median Timeseries Plot



Major Basin Summary

Arkansas River Basin



0 25 50 100 150 200 Miles



Colorado Snow Surveys

PRECIPITATION IN ARKANSAS

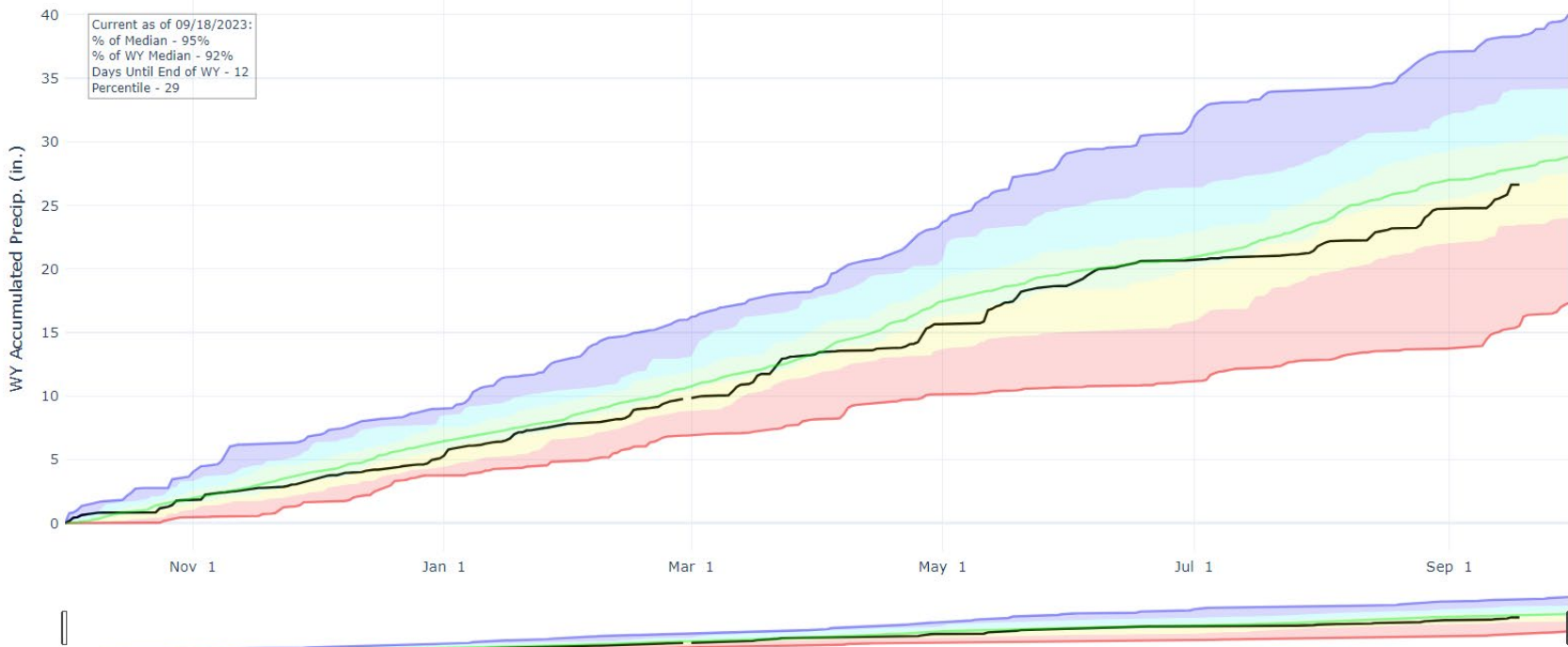
Reset Range

[Link to data: CSV / JSON](#)

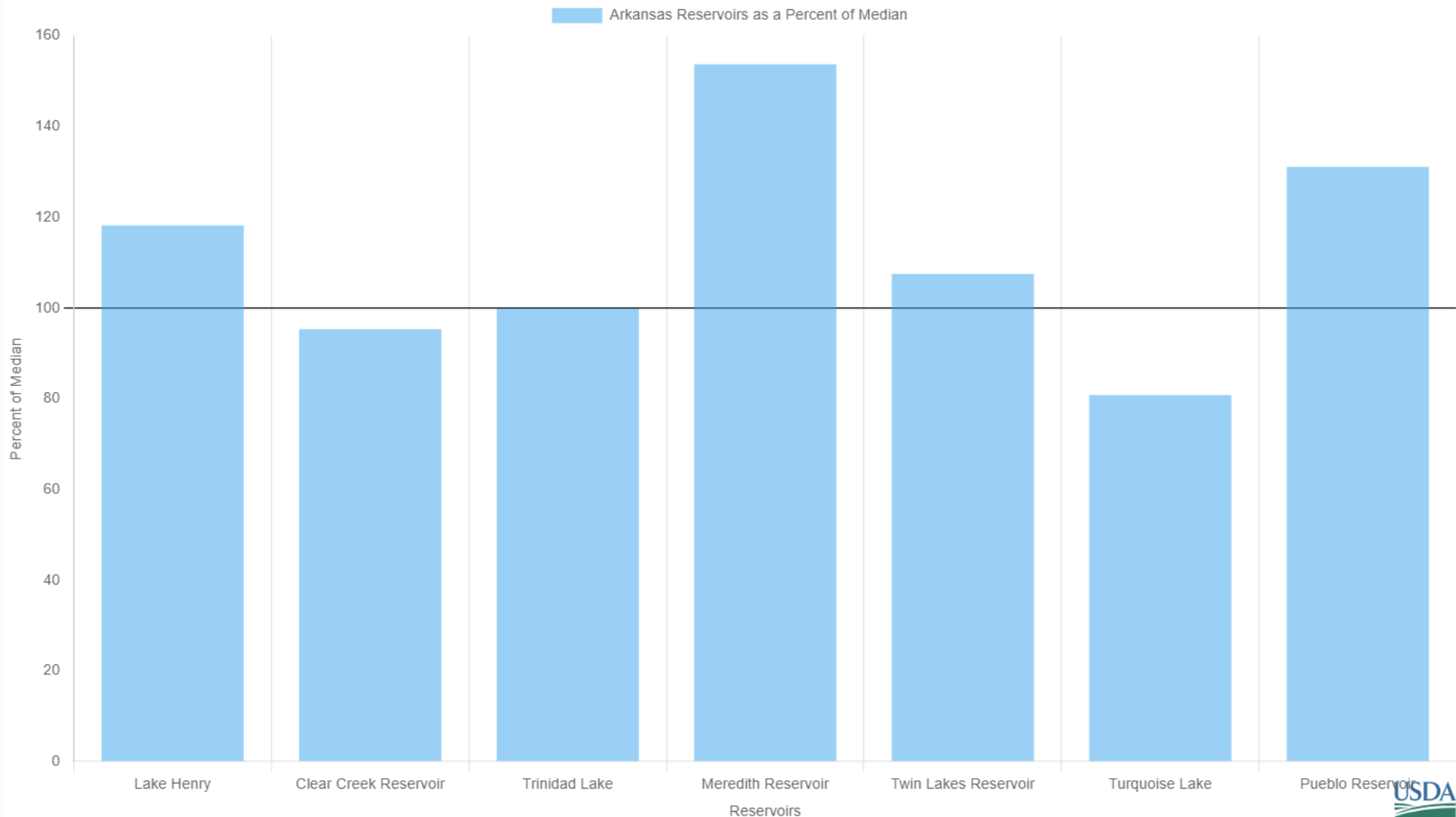
Station List

Current as of 09/18/2023:
% of Median - 95%
% of WY Median - 92%
Days Until End of WY - 12
Percentile - 29

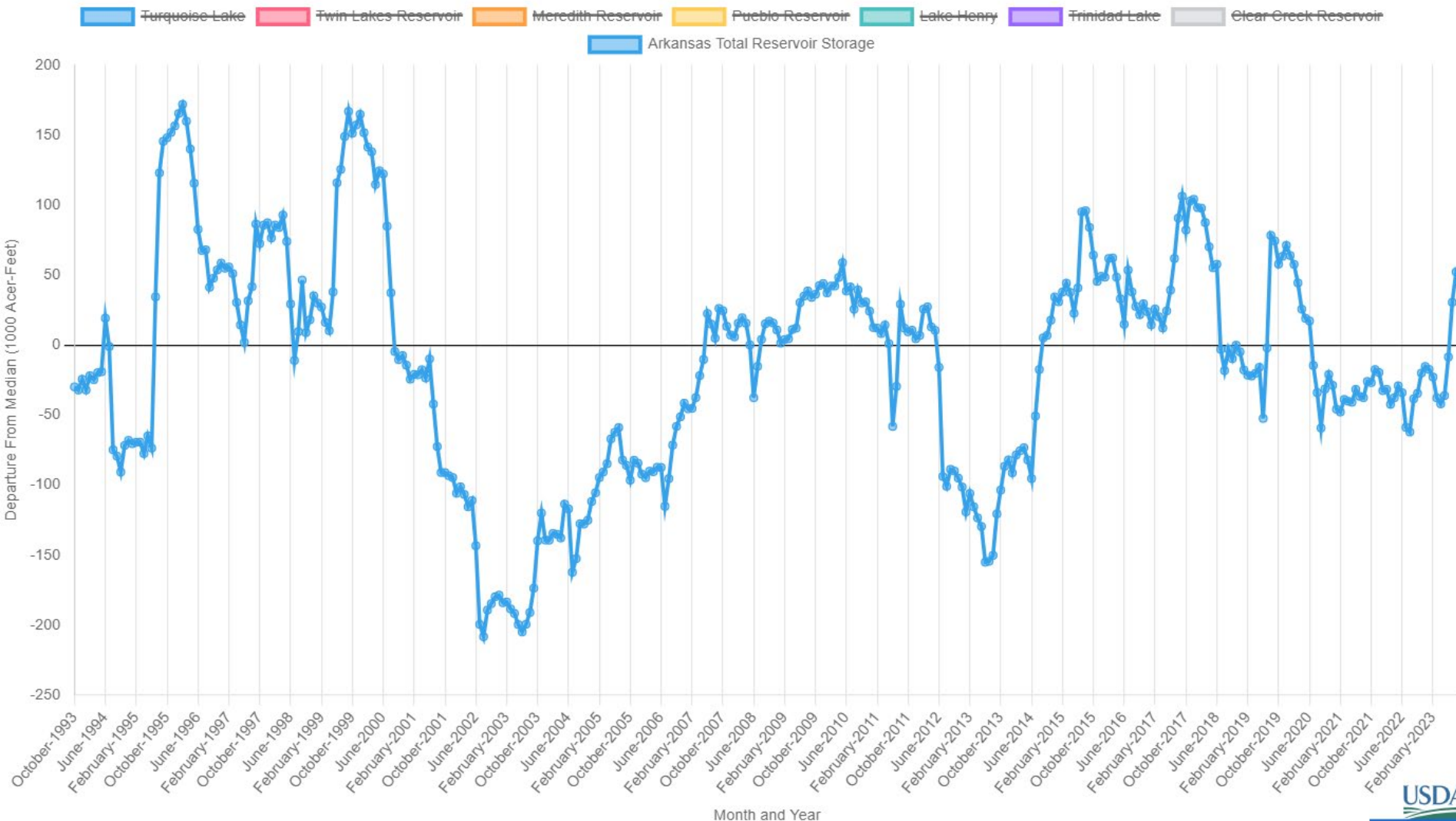
- Max
- Median (POR)
- Median ('91-'20)
- Min
- Stats. Shading
- 2023 (11 sites)
- 2022 (11 sites)
- 2021 (11 sites)
- 2020 (11 sites)
- 2019 (11 sites)
- 2018 (11 sites)
- 2017 (11 sites)
- 2016 (11 sites)
- 2015 (11 sites)
- 2014 (11 sites)
- 2013 (11 sites)
- 2012 (11 sites)
- 2011 (11 sites)
- 2010 (11 sites)
- 2009 (11 sites)
- 2008 (11 sites)
- 2007 (9 sites)
- 2006 (9 sites)
- 2005 (9 sites)



Arkansas Reservoir Storage Summary for September 1st 2023

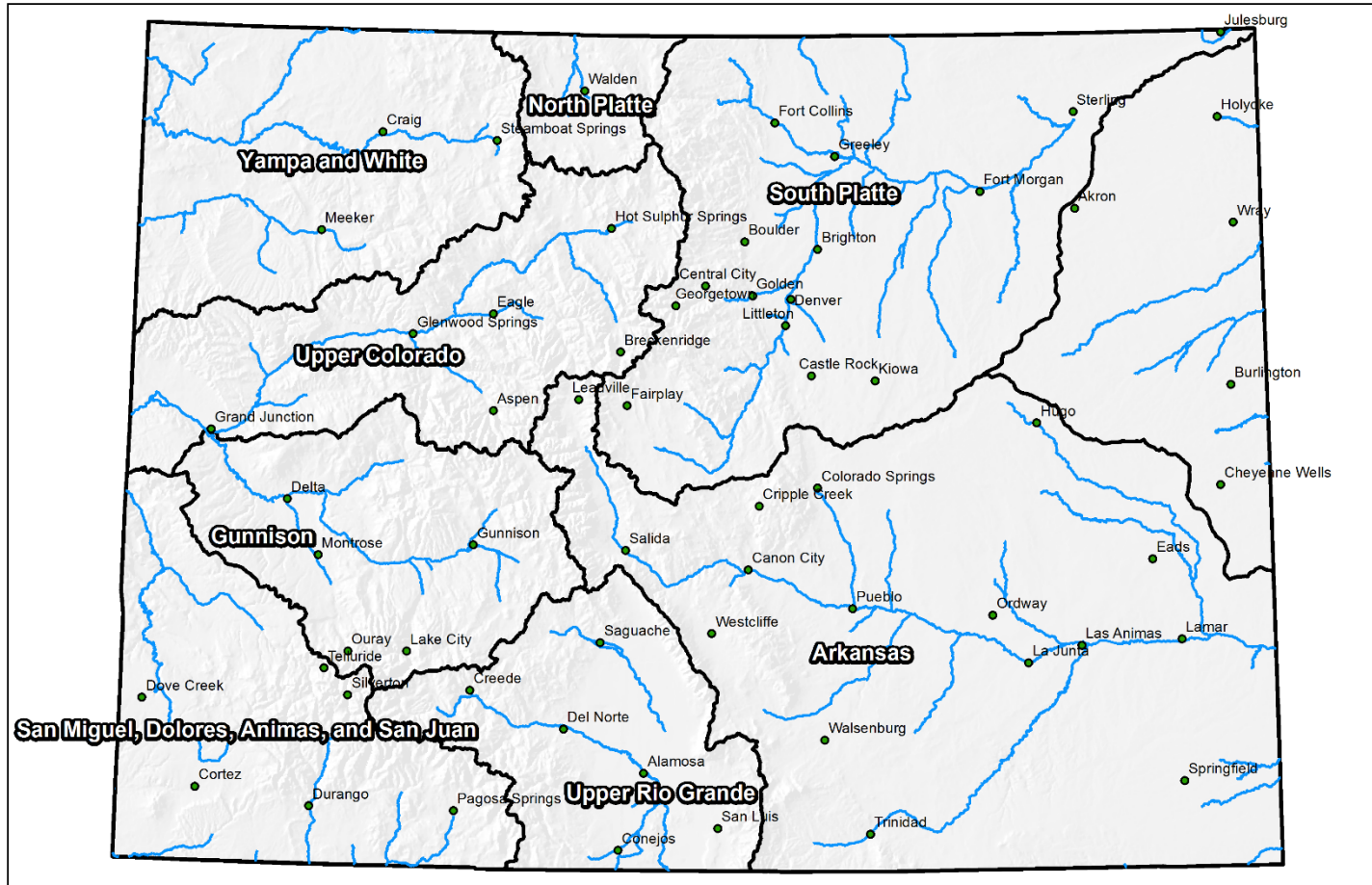


Arkansas Departure From Median Timeseries Plot



Colorado Statewide Summary

Colorado Major Basins

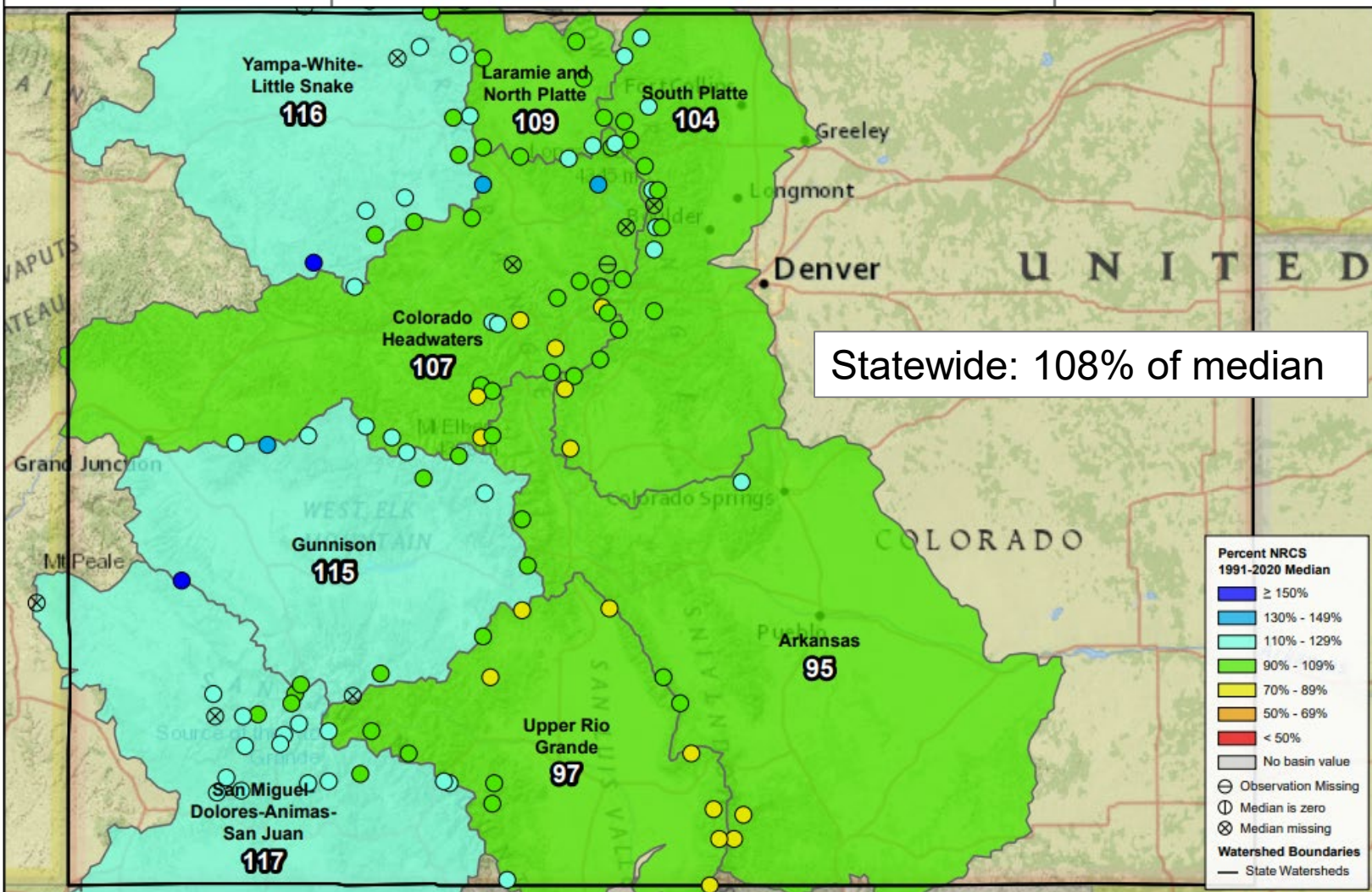


0 25 50 100 150 200 Miles

Water Year to Date Precipitation

Percent NRCS 1991-2020 Median

October 1, 2022 - September 17, 2023

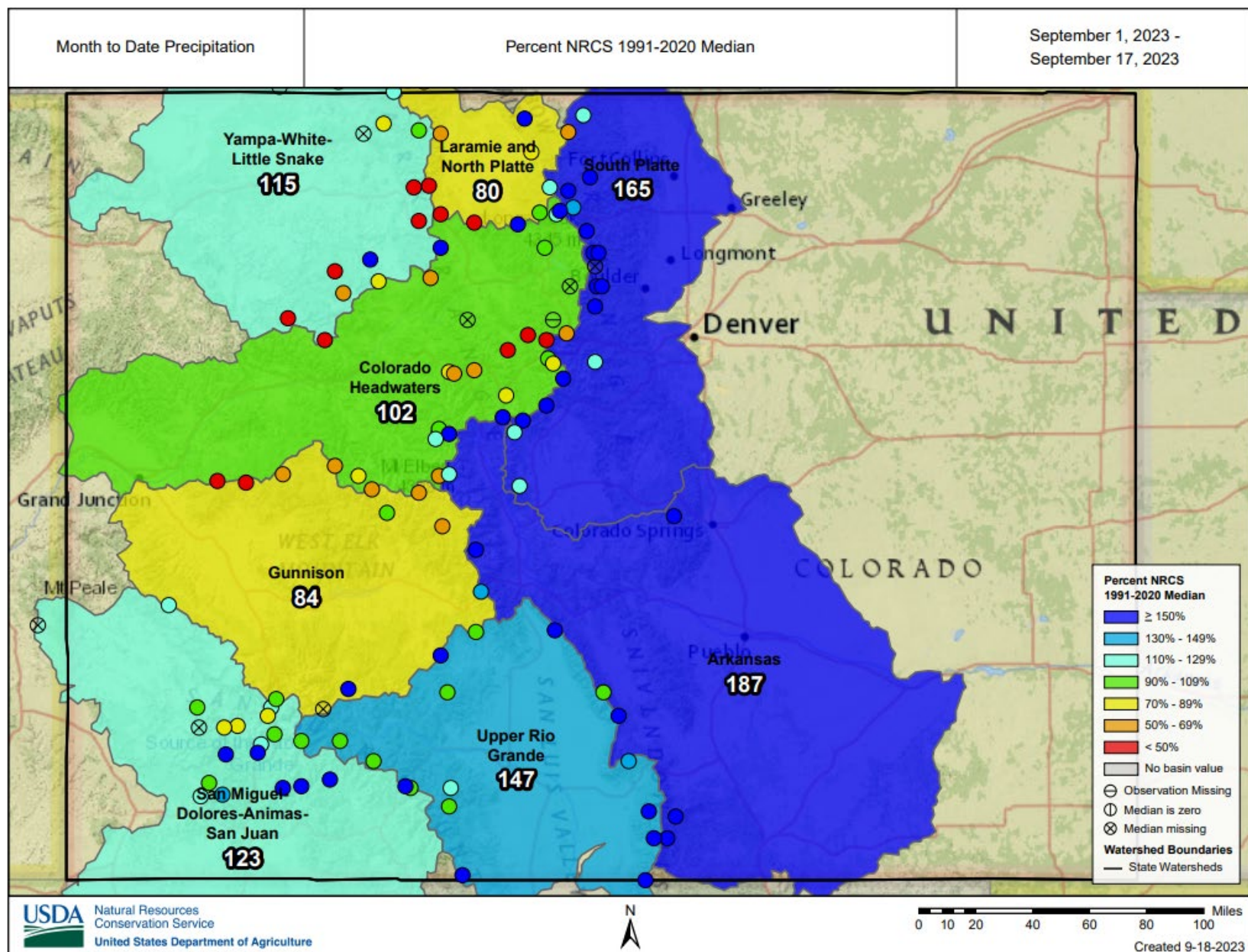




United States Department of Agriculture

Colorado Snow Surveys

MTD Precipitation





Colorado Snow Surveys

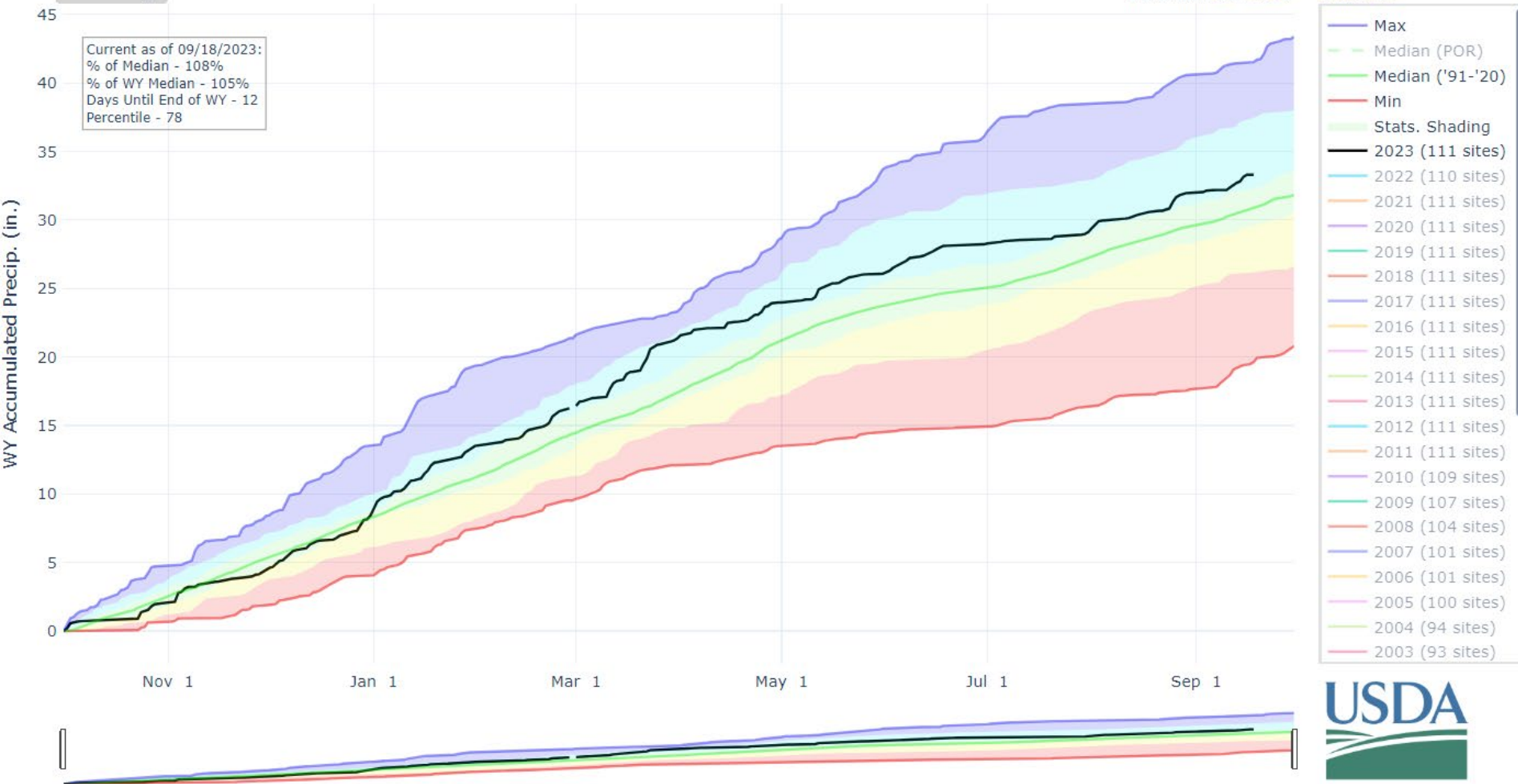
PRECIPITATION IN STATE OF COLORADO

Reset Range

[Link to data: CSV / JSON](#)

[Station List](#)

Current as of 09/18/2023:
% of Median - 108%
% of WY Median - 105%
Days Until End of WY - 12
Percentile - 78

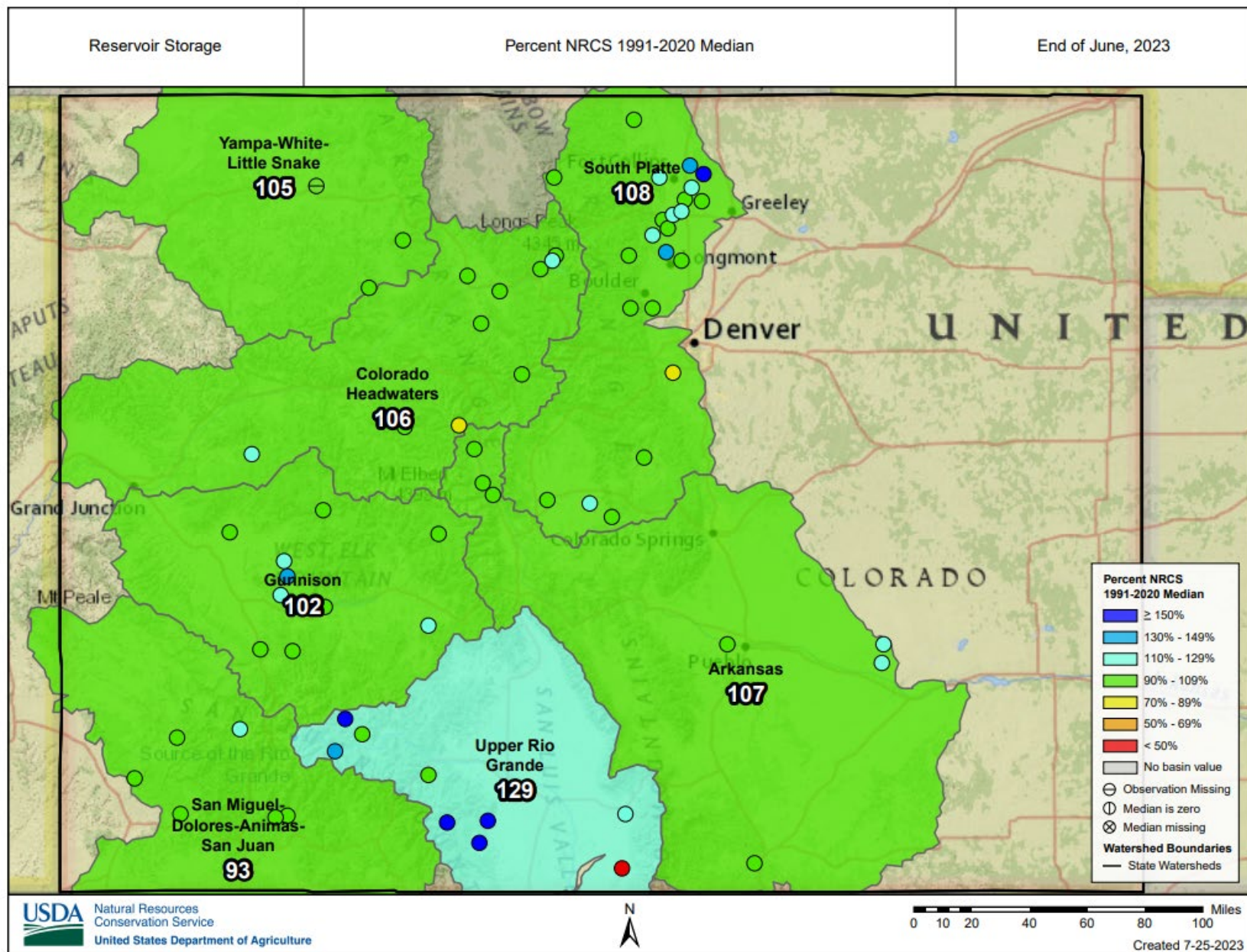


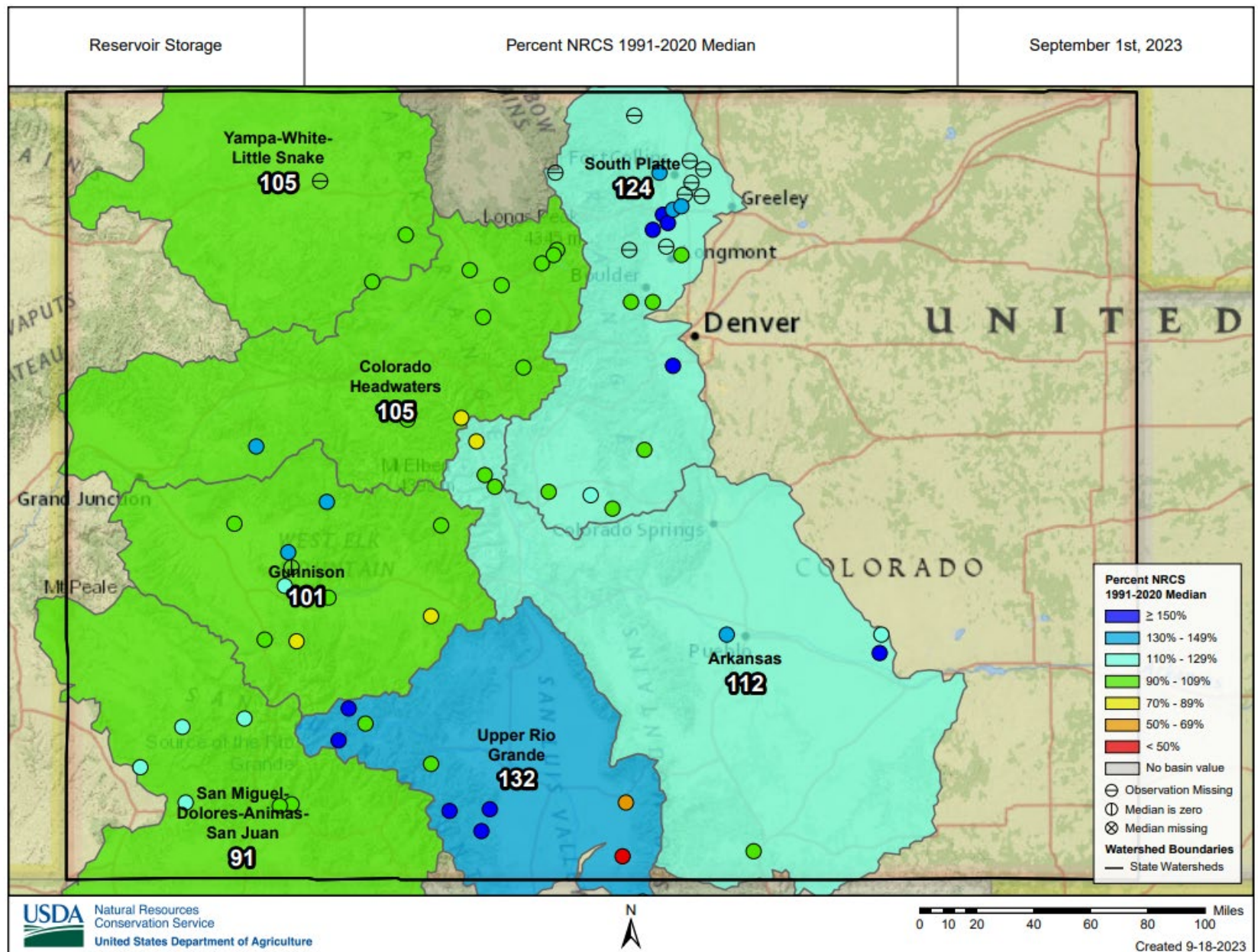


United States Department of Agriculture

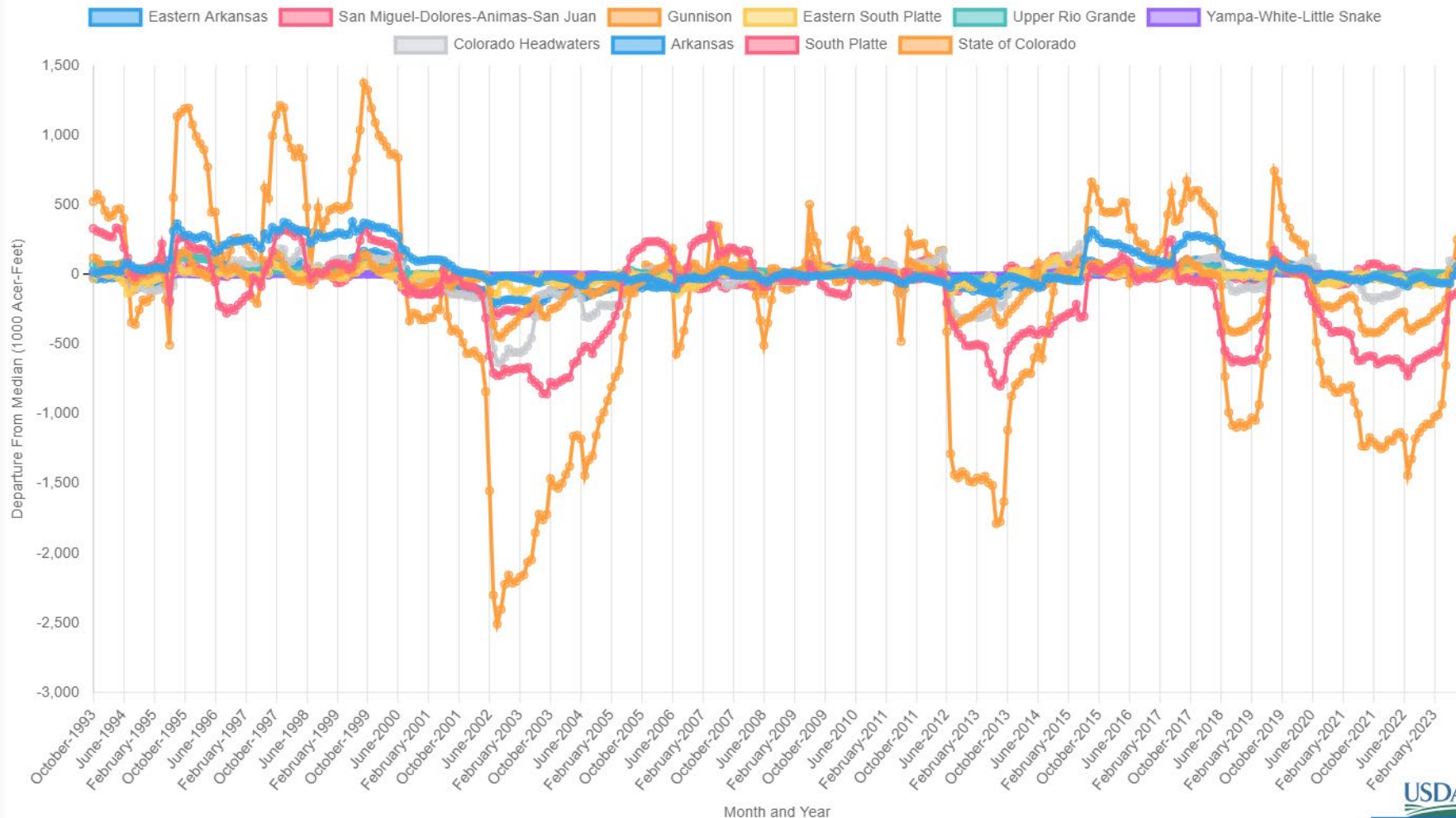
Colorado Snow Surveys

Reservoir Storage: July 1st

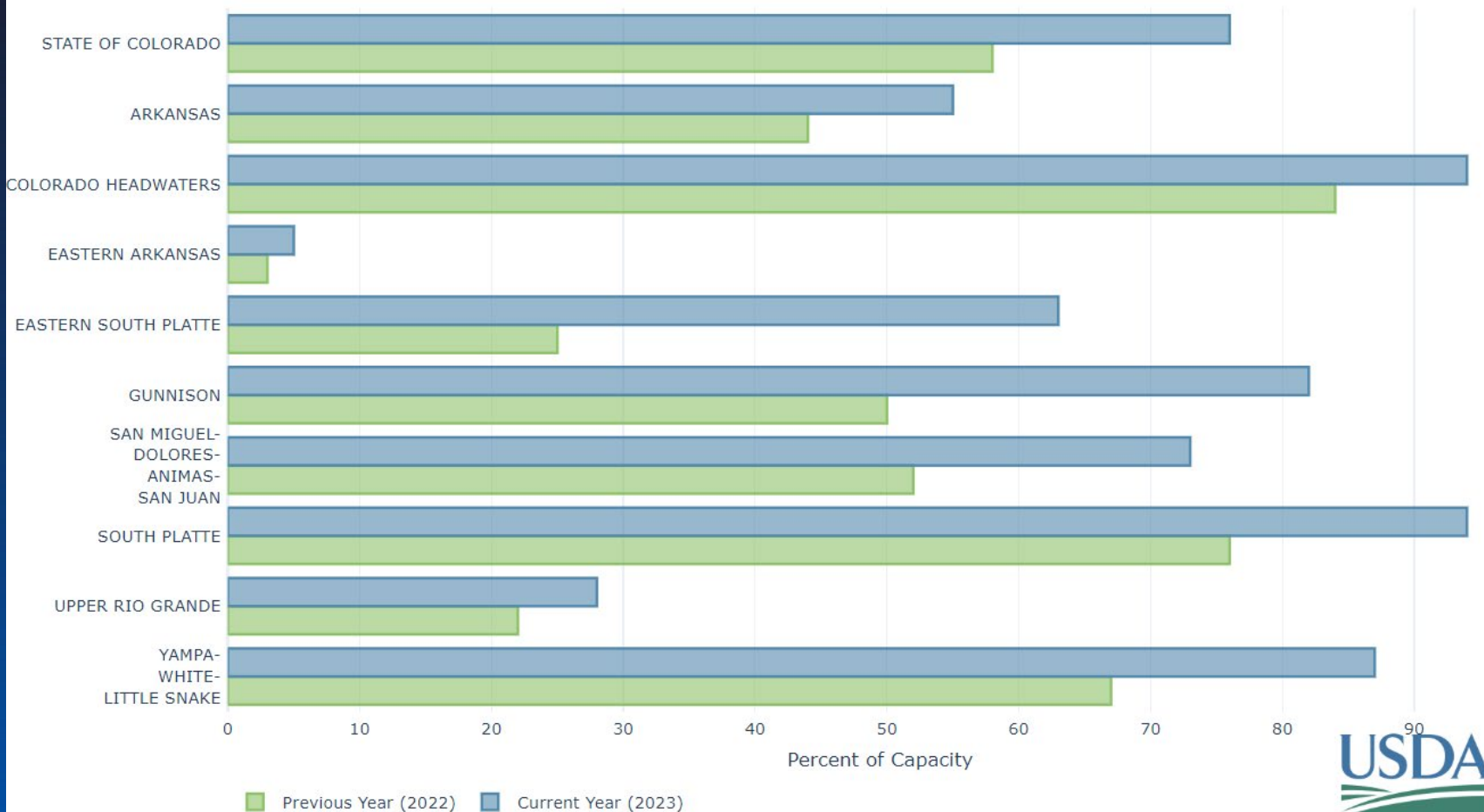


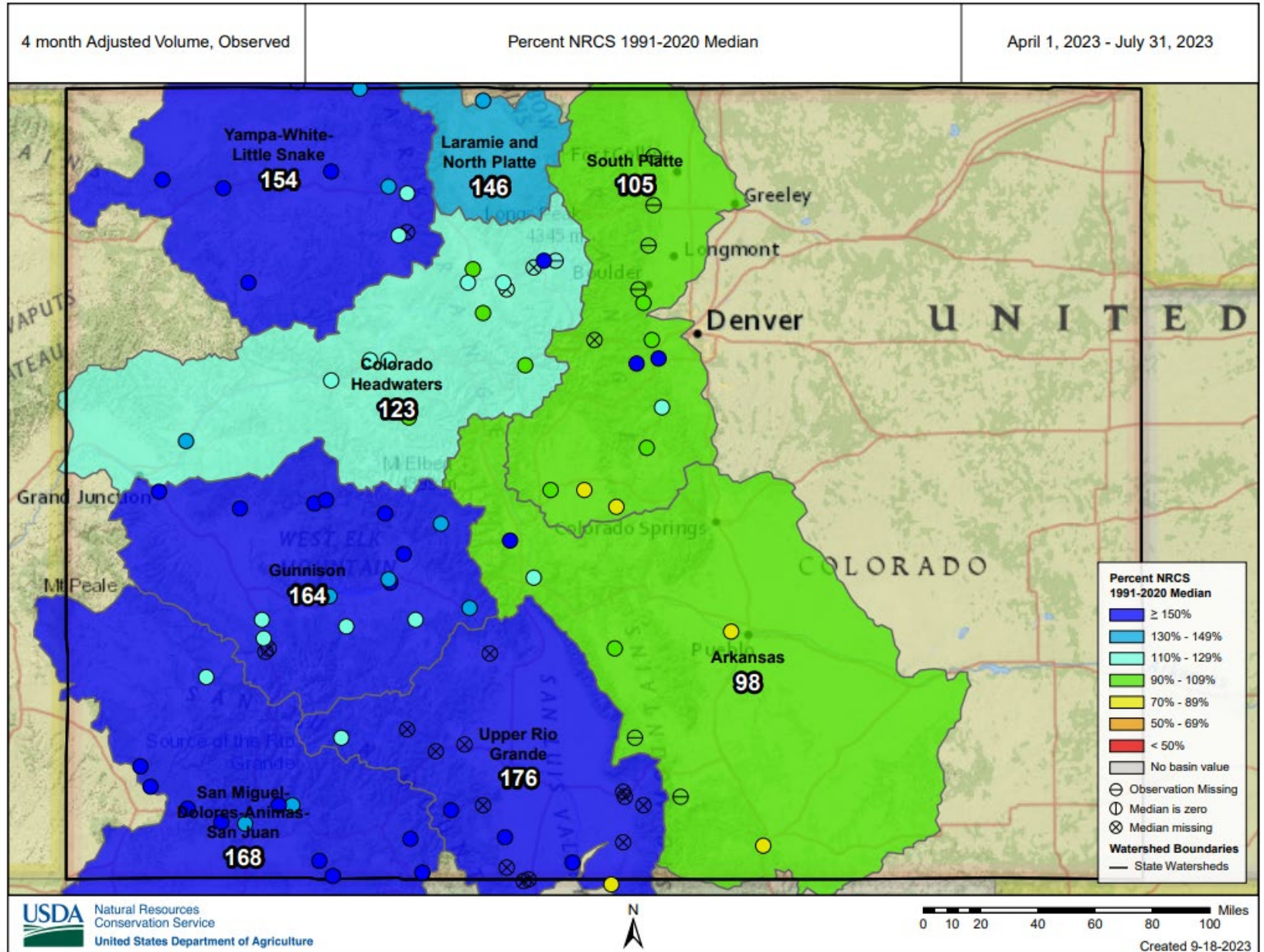


Colorado Departure From Median Timeseries Plot



RESERVOIR STORAGE IN COLORADO
END OF AUGUST 2023



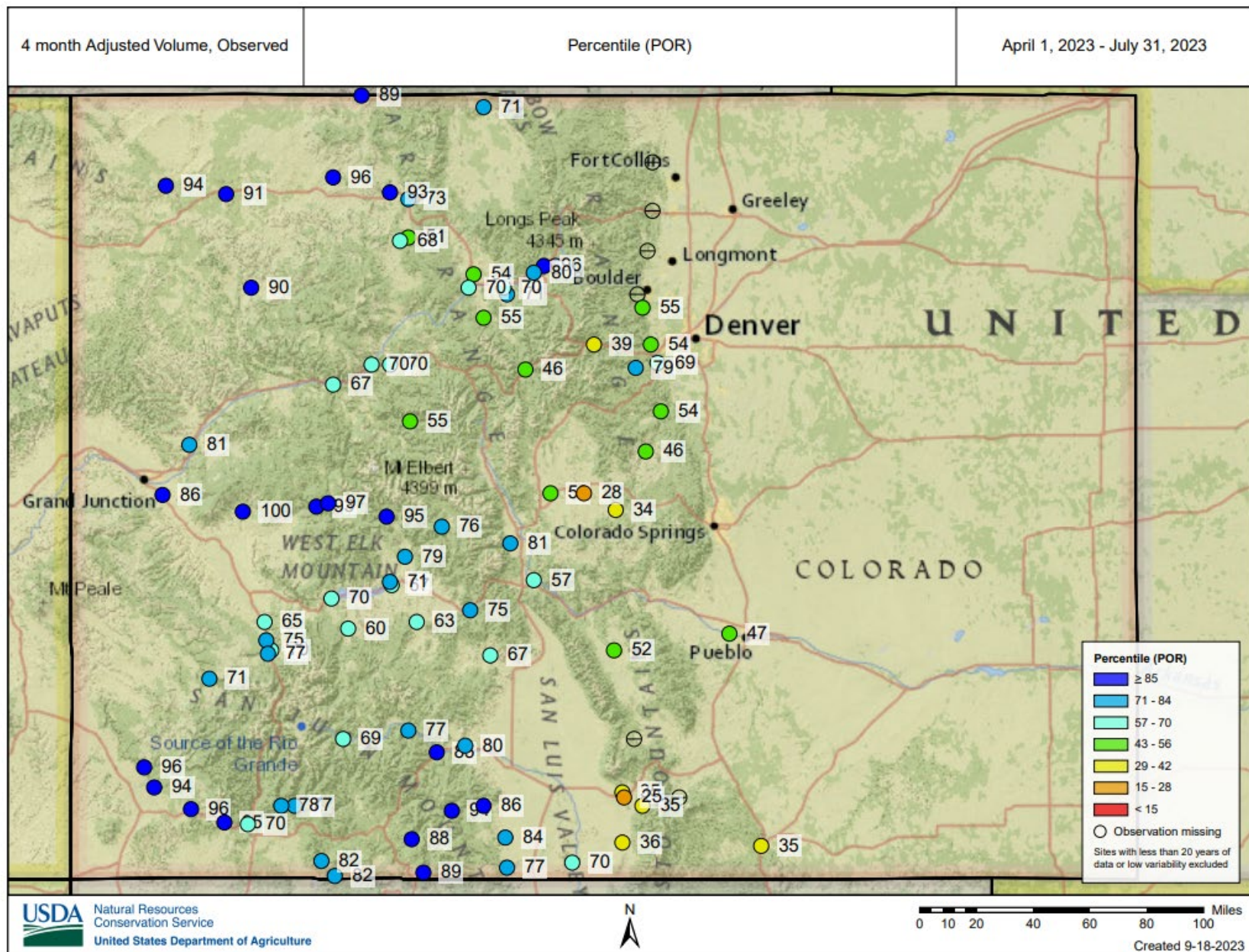


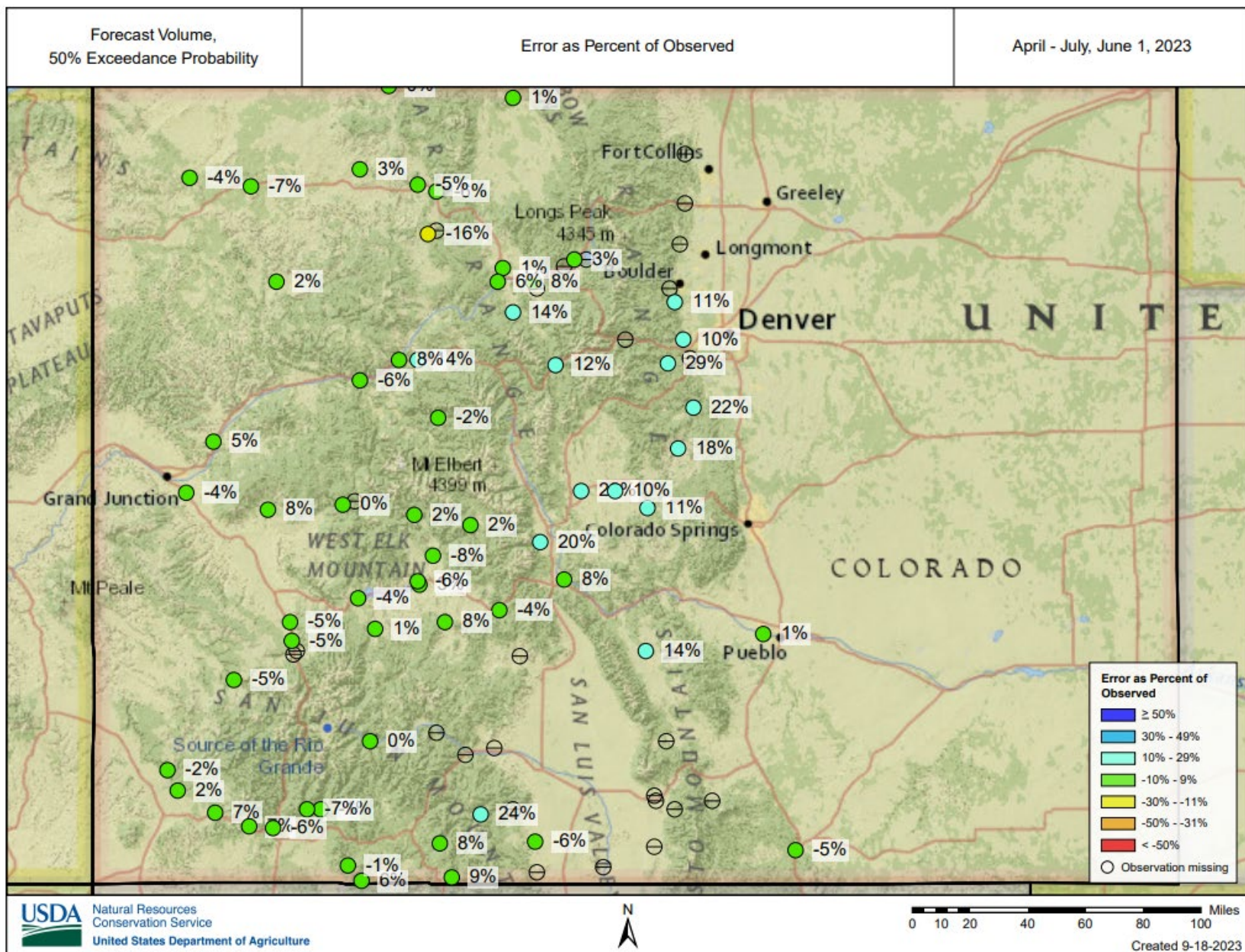


United States Department of Agriculture

Colorado Snow Surveys

April – July Observed Streamflow





Summary

- Water year to date precipitation is very near to well above normal in all major basins of Colorado.
 - Precipitation was received with considerable differences in seasonality across the state. Western Colorado received significantly more during the winter and the Front Range more through the summer.
- Statewide reservoir storage has remained at above normal levels for the last three months after three years of below normal storage.
- Observed April-July Streamflows were near normal in the Arkansas and South Platte basins and well above normal across the rest of the state.
 - Many rivers in Western Colorado observed above the 90th percentile of observed streamflow volumes in their period of record commonly going back 50-100+ years.



Non-Discrimination Statement:

In accordance with Federal civil rights law and U.S. Department of agriculture (USDA) civil rights regulations and policies, the USDA, its Agencies, offices, and employees, and institutions participating in or administering USDA programs are prohibited from discriminating based on race, color, national origin, religion, sex, gender identity (including gender expression), sexual orientation, disability, age, marital status, family/parental status, income derived from a public assistance program, political beliefs, or reprisal or retaliation for prior civil rights activity, in any program or activity conducted or funded by USDA (not all bases apply to all programs). Remedies and complaint filing deadlines vary by program or incident.

Persons with disabilities who require alternative means of communication for program information (e.g., Braille, large print, audiotape, American Sign Language, etc.) should contact the responsible Agency or USDA 's TARGET Center at (202) 720-2600 (voice and TTY) or contact USDA through the Federal Relay Service at (800) 877-8339. Additionally, program information may be made available in languages other than English.

To file a program discrimination complaint, complete the USDA Program Discrimination Complaint Form, AD-3027, found online at [How to File a Program Discrimination Complaint](#) and at any USDA office or write a letter addressed to USDA and provide in the letter all of the information requested in the form. To request a copy of the complaint form, call (866) 632-9992. Submit your completed form or letter to USDA by: (1) mail: U.S. Department of Agriculture, Office of the Assistant Secretary for Civil Rights, 1400 Independence Avenue, SW, Washington, D.C. 20250-9410; (2) fax: (202) 690-7442; or (3) email: program.intake@usda.gov.