



---

# COLORADO

**Colorado Water  
Conservation Board**  
*Department of Natural Resources*

## **DIRECTOR'S REPORT**

**July 2023**

Interstate Compact Compliance • Watershed Protection • Flood Planning & Mitigation • Stream & Lake Protection  
Water Project Loans & Grants • Water Modeling • Conservation & Drought Planning • Water Supply Planning



# COLORADO

## Colorado Water Conservation Board

Department of Natural Resources

TO: Colorado Water Conservation Board Members

FROM: Lauren Ris  
Rosie Major

DATE: July 19-20, 2023

SUBJECT: **Agenda Item 4b, July 2023 CWCB Board Meeting Director's Report**

---

### TABLE OF CONTENTS

Pg. 3 - STATEWIDE

- CWCB Small Feasibility Grant Fund Update
- Local Capacity and CWCB Technical Assistance Grants Program Update

Pg. 5 - COLORADO RIVER BASIN

- Colorado River Water Use

Pg. 6 - WATERSHED AND FLOOD UPDATES

- FEMA FY22 NFIP Community Assistance Program Grant Summary: End of Performance Period

Pg. 7 - WATERSHED AND FLOOD UPDATES

- The Letter of Map Revision (LOMR) Review Partners Program
- May 2023 Risk Mapping, Assessment and Planning (MAP) Project Updates by Major Water Basin

Pg. 16 - WATERSHED AND FLOOD UPDATES

- LiDAR Acquisition
- Stream Management Planning - Workshops

Pg. 17 - WATERSHED AND FLOOD UPDATES

- 2023 American Water Resources Association Conference

Pg. 18 – WATERSHED AND FLOOD UPDATES

- Active Snowpack Season Leads to Active Runoff Season

Pg. 19 – WATERSHED AND FLOOD UPDATES

- Wildfire Ready Watersheds

Pg. 21 - WATER SUPPLY PLANNING SECTION UPDATES

- Water Supply Planning Section July 2023 Update

Pg. 22 – WATER SUPPLY PLANNING SECTION UPDATES

- Water Supply Reserve Fund Grants

Pg. 23 - INSTREAM FLOW SECTION

- Instream Flow De Minimis Report
- Instream Flow and Natural Lake Level Program Summary of Resolved Opposition Cases

Pg. 32 - LOAN PROGRAM ATTACHMENTS

01 - Water Project Loan Program Interest Rates

02 - Prequalified Project List and Loan Prospect Summary

03 - Design and Construction Status Report

04 - Loan Repayment Delinquency Report & Loan Financial Activity Report

## STATEWIDE

### Finance Section Director's Report Items – July 2023

#### CWCB SMALL FEASIBILITY STUDY GRANT FUND UPDATE:

New grant applications approved:

1. None

Previously approved grants in FY22/23:

1. Platte Valley Irrigation Company – Equalization Reservoir (\$6,135)

Total funds approved for feasibility study grants in FY22/23: \$6,135

### Local Capacity and Technical Assistance Grants Director's Report - July 2023

#### Local Capacity Grants

H.B. 22-1379 established \$2.5 million for Local Capacity Grants. The following table summarizes Local Capacity Grant activity through July 1, 2023.

<b><u>Pending Applications</u></b>			
There are no pending applications as of July 1, 2023. Program staff have made numerous contacts with potential applicants during the spring and expect several new applications soon.			
<b><u>Approved Applications</u></b>			
Applicant	Project	Total Project Budget	Grant Award
Grand County Learning by Doing	<a href="#">Federal Funding for LBD Stream Restoration and Improvement Projects</a>	\$237,531	\$169,775
Ute Mountain Utes Tribal Government	<a href="#">Pre-Development Work (PL-566)</a>	\$70,000	\$52,500
American Rivers	<a href="#">Wetland/Riparian Projects in the San Luis Valley</a>	\$241,000	\$180,000
Colorado River Water Conservation District	<a href="#">Colorado River Drought Response Project</a>	\$578,840	\$434,130
Colorado Rio Grande Restoration Foundation	<a href="#">Rio Grande Basin Capacity to Secure Federal Project Funding</a>	\$268,800	\$195,000
Collbran Water Conservation District	<a href="#">Plateau Valley Pre-Development Work (PL-566)</a>	\$70,000	\$52,500
West Divide Water Conservancy District	<a href="#">Martin Reservoir Enlargement and Reconfiguration</a>	\$315,906	\$118,464
Total:		\$1,782,077	\$1,202,369

**Technical Assistance Grants**

H.B. 22-1379 established \$2.5 million for Technical Assistance Grants. CWCB has contracted with Abt Associates to provide wide-ranging assistance to communities and water managers across Colorado as they develop federal grant applications for projects with a nexus to the Colorado Water Plan. This program is available for applications as of June 2023, and program staff have had preliminary planning meetings with several excellent candidates.

## COLORADO RIVER BASIN

### COLORADO RIVER WATER USE—

2023 Colorado River Storage as of July 2, 2023			
	Elevation (feet above mean sea level)	Storage (MAF)	Percent of Capacity
Lake Mead	1,056.70	8.175	31%
Lake Powell	3,584.06	9.622	41%
Total System Active Storage		25.806	44%
2023 Total Active Storage		20.435	35%
		Flow (MAF)	Percent of Average
Forecasted Unregulated Inflow into Powell (Forecasted Water Year 2023)		14.001	146%

\*Note MAF = million acre-feet

## WATERSHED AND FLOOD UPDATES

### **National Flood Insurance Program (NFIP) Community Assistance Program-State Support Services Element (CAP-SSSE) Colorado Floodplain Development Management Program**

***FEMA FY22 NFIP Community Assistance Program (CAP) Grant Summary: End of Performance Period***  
June 30, 2023 saw the end of the FY23 CAP grant 12-month period of performance.

During this period, this office conducted over 400 general technical assistance (GTA) contacts with local communities, individual citizens, and other parties requesting information or guidance pertaining to the regulatory floodplain. These GTAs represent this office's response to inquiries on a variety of floodplain-related topics/issues including regulatory guidance, floodplain permitting, floodplain map determination & changes, elevation certificates, flood insurance, and hazard mitigation grants.

Nineteen (19) Community Assistance Contacts (CAC) and 10 Community Assistance Visits (CAV) were performed from July 2022 to June 30, 2023. The CAC provides a means to establish or re-establish contact with an NFIP community for the purpose of determining any existing problems or issues and to offer assistance if necessary. The CAC also provides the opportunity to enhance the working relationship between the State or FEMA and NFIP communities and creates a greater awareness of the NFIP and its requirements. The CACs were conducted by telephone or via virtual meeting platform. The CAV is a scheduled visit to an NFIP community for the purpose of conducting a comprehensive assessment of the community's floodplain management program and of its knowledge and understanding of the floodplain management requirements of the NFIP. The purpose of the CAV is also to provide assistance to the community in remedying identified program deficiencies and violations. The emphasis of the CAV is on resolving issues or problems by providing floodplain management assistance.

FY22 saw new/updated floodplain maps go effective in 6 Colorado communities – Jefferson & San Juan Counties; the Cities of Edgewater, Lakewood, & Wheat Ridge, and the Town of Silverton. Upon receipt of FEMA's Letter of Final Determination (LFD) which notifies the respective community of the new map's effective date, this office assisted these communities with the review and update of their current floodplain management rules/code to reflect the new flood studies and maps as required by NFIP rules. All communities successfully completed these updates within the required timeframe (6 months from date of the LFD) and no community was subject to sanction from the NFIP.

The Colorado CAP-SSSE program completed the second 3-year cycle of the National Flood Insurance Program Tiered State Framework (NFIP TSF) evaluation in January 2023. FEMA created the TSF in response to feedback from state partners highlighting a need for clarity on the goals and performance standards of CAP-SSSE. The TSF helps FEMA recognize, invest in, and incentivize state efforts to develop and maintain the capabilities necessary to carry out the duties of a State NFIP Coordinating Agency. The TSF and the aligned program funding methodology has 3 goals:

- Increase transparency around state floodplain management activities and best practices;
- Enable a performance-based program that can fairly and consistently evaluate State NFIP Coordinating Agency strengths and areas of improvement; and
- Establish a level playing field for CAP-SSSE to make judgements about the resources that states may require to deliver upon the goals of the program.

The TSF evaluates a State's CAP program based on 4 categories – Capacity, Capability, Performance, and Planning/Coordination – and 27 individual characteristics within these categories. Based on evidence provided by the state, each characteristic is rated as one of three tiers: Foundational, Proficient, or Advanced. For the 2023 TSF cycle, the Colorado CAP program was rated Advanced in 9 of the 27 characteristics, a 5 characteristic increase over the 2020 TSF cycle.

(Doug Mahan; Willem Lensink)

### **The Letter of Map Revision (LOMR) Review Partners Program**

The CWCB LOMR Review Partners Program continues to work with applicants, communities and the Federal Emergency Management Agency (FEMA) to answer questions, provide guidance, and work through complex issues for both ongoing and upcoming map revision requests. CWCB processes and makes recommendations for revision requests on behalf of FEMA to modify flood hazard information on Flood Insurance Rate Maps (FIRMs). FEMA determines if the revision request will be approved or become effective. We have 77 cases in process with ongoing cases in Boulder, Clear Creek, Chaffee, Douglas, El Paso, Elbert, Garfield, Gilpin, Grand, Jefferson, Larimer, Montrose, Prowers, Pueblo, San Miguel, Sedgwick, Summit and Weld Counties.

*(Terri Fead and Marta Blanco Castaño)*

---

### **May 2023 Risk Mapping, Assessment and Planning (MAP) Project Updates by Major Water Basin**

CWCB is FEMA's Cooperating Technical Partner (CTP) for the state while Mile High Flood District (MHFD) is the CTP within their service area (Denver Metropolitan Area). CWCB provides support for and coordination with MHFD on projects and data sharing for communities that extend across common boundaries.

**North Platte Basin** – No flood hazard studies are being conducted in this area.

**South Platte Basin** – Adams, Arapahoe, Boulder, Sedgwick, Larimer, Lincoln, Logan, Morgan, Park, Phillips, and Weld Counties have ongoing Risk MAP studies. Ongoing CWCB studies within the South Platte basin are as follows:

- Park County Phase 2: Phase 2 (Data Development) is underway. Our Contractor is working on hydrology development, which will be ready to submit for FEMA review in late July.
- Logan County: A Phase 2 kickoff meeting happened in May 2023. The County has been suspended from the NFIP. The County's NFIP participation status will not impact progress for the Risk MAP project. We are still working to confirm the Phase 2 scope of work with communities.
- Adams and Arapahoe Counties: The draft BLE modeling and mapping are complete for both counties. Together, CWCB and MHFD held virtual meetings with the Adams communities on January 18<sup>th</sup>, and with Arapahoe communities on January 26<sup>th</sup>. For portions of the counties



outside the MHFD, BLE data will continue through the Risk MAP process that is being implemented in other counties across the state. Draft BLE data developed within the Denver Metropolitan Area have been provided to MHFD and will not be studied further by CWCB. MHFD will use the data for informational purposes and other uses within the service area. We are planning to hold Risk MAP Discovery meetings for the CWCB portions of both counties in the next month as we move ahead with the flood hazard updates.

- Morgan County BLE: We have submitted the final Discovery packet to FEMA and will be scheduling a Phase 2 kickoff meeting in the coming weeks, once a contract is in place. We are investigating some past flooding history in the Town of Hillrose before proceeding.
- Weld Countywide: A countywide BLE/Discovery effort will be starting soon for all flooding sources with drainage areas > 1-square mile. This countywide study will not include flooding sources recently updated with the CHAMP project (summarized below). A kickoff meeting with communities will be held in the next few months.
- Colorado Hazard Mapping Program (CHAMP) Physical Map Revisions (PMRs): The CWCB was able to leverage funds from FEMA to continue getting several CHAMP studies incorporated into updated Flood Insurance Rate Maps (FIRMs) and Flood Insurance Studies (FISs) through the FEMA Physical Map Revision process. CHAMP involved analyzing major streams across various Colorado counties (following the devastating 2013 flooding along the Front Range) and includes over 200 FIRM panel updates. Three remaining counties are being completed within the South Platte Basin. These include Boulder, Weld, and Larimer Counties.
  - o Boulder County PMR: Revised preliminary FIRMs will be prepared to incorporate some changes resulting from due process. FEMA's contractor will restudy the SRP area Left Hand Creek stream segments in accordance with the Scientific Review Panel (SRP) recommendations. The restudy will determine the flood hazard updates to Left Hand Creek within the SRP area and will impact portions of three FIRM panels. These SRP flood hazard updates will become effective through a future LOMR that will follow the MT-2 revision process.

For the Boulder County PMR to move forward, revised preliminary FIRM panels for the SRP area will reflect the effective flood hazard data for Left Hand Creek, Geer Canyon Creek, and a portion of Fourmile Canyon Creek. All Boulder County revised preliminary panels are to be issued July 10<sup>th</sup>. The estimated Letter of Final Determination (LFD) for this PMR is late 2023.

For CHAMP data to be reflected for Geer Canyon Creek and the portion of Left Hand Creek (westward of their confluence), and Fourmile Canyon Creek there will need to be two LOMRs. All stream reaches to be included in the LOMRs are well outside the SRP area. CWCB is working with MHFD to get these two required LOMRs completed.

- Weld County PMR: The Letter of Final Determination (LFD) was issued on May 30, 2023. The revised Flood Insurance Study (FIS) and Flood Insurance Rate Maps (FIRMs) will go effective six months after the LFD date.

The City of Longmont extends between both Weld and Boulder Counties. Longmont has opted to split their flood hazard information at the Boulder/Weld County line. This requires another mandatory appeal period for the four FIRM panels that include portions of the City of Longmont. To allow the rest of the Weld County PMR to move forward, the four Weld County FIRM panels that include the City of Longmont will be removed from the Weld County PMR. These four Weld County FIRM Panels will become the Longmont PMR and will be processed on a schedule parallel to the Weld County PMR.

- Larimer County PMR: Due process for this project has ended and there were several comments/appeals received. Valid Appeal items have been resolved and revised preliminary FIRM panels are being produced for issuance. An updated schedule with the LFD date and other key milestones will be sent soon.
- Phillips County Phases 2-3: The 90-day appeals/comment period started on March 29, 2023 and just closed on June 27th. FEMA received one hydrology-based package from CDOT during due process. FEMA's contractor will review the package contents to determine if it is a valid appeal.
- Phillips Countywide: We held the countywide Discovery meeting in January 2023, and we are preparing for a Phase 2 kickoff meeting in the coming weeks.
- Sedgwick County: A countywide BLE/Discovery effort will be starting for flooding sources that weren't updated with the ongoing CHAMP project.

**Colorado Basin** – Eagle, Summit, and Garfield Counties have ongoing Risk MAP studies:

- Eagle County Physical Map Revision Phases 2-3: The revised Roaring Fork River hydraulic analysis and floodplain mapping have been approved by FEMA. A revised preliminary FIRM distribution occurred December 29, 2022. Communities were provided 30-days to verify the changes. We are held a Consultation Coordination Officer (CCO) and two Public Meetings on May 30, 2023. CWCB coordinated with the communities to have Spanish interpreters attend both public meetings. Yet had no Spanish speakers in attendance. All three meetings were well attended and there were a lot of good questions and discussion regarding the flood study process, mapping revisions, insurance information, etc.
- Garfield County Phase 2-3: Survey information has been collected for all the accessible properties. Some assumptions will have to be made in the hydraulic modeling for remaining areas where property access was denied. FEMA approved a modification in the hydrology methodology to account for the high snowmelt influences on the stream gage data for this watershed. Hydraulic analyses are being performed for the scoped streams. A debris flow

analysis is also being produced for the Glenwood Springs area and we will share results with the community in the coming months.

- Summit County BLE/Phase 2: First part of the survey is complete. Remaining survey collection is weather-dependent, and we will reach out to property owners where access was previously denied seeing if survey data may be obtained. If access is denied and not survey data can be collected, assumptions will have to be made for corresponding hydraulic analyses. CWCB met with the County to discuss remaining concerns associated with the previous countywide study that became effective in 2016. Several previous items are being addressed with the ongoing study. Hydrology is being developed for other portions of the county and will be ready for FEMA review in late July.

**Gunnison Basin – Delta, Gunnison, and Ouray Counties have ongoing studies:**

- Delta County Phase 2-3. FEMA's QR3 review (Gunnison River updates, etc.) came back and we're working on addressing comments. The schedule for issuing the preliminary mapping products is being revised and will be shared soon. To address an existing gap in flood hazard data between Minnesota Creek and the North Fork of the Gunnison River, CWCB has state-funded an updated flood hazard study along Minnesota Creek as requested by the communities. The resulting flood hazard information changes will be completed with a LOMR from the North Gunnison River confluence through the Town of Paonia. CWCB has been performing an internal review of the preliminary flood hazard data for the county before it is distributed publicly in the coming months.
- Ouray County PMR: The Ouray County PMR appeal period ended March 29, 2023. No comments or appeals were received, and the LFD is to be issued on July 11, 2023. The county will have updated, effective maps six months later, in early January 2024.
- Ouray Countywide BLE: A countywide BLE/Discovery effort will be starting soon. A kickoff meeting with communities will be scheduled in the coming months.
- Gunnison County PMR: Hydraulic modeling had been approved by FEMA; however, the communities requested consideration of an existing embankment/dam structure (non-dam feature) as providing flood protection. CWCB is working with communities as they address options for ensuring the existing embankment can be credited with providing flood protection. Floodplain mapping submittals will take place once there is a path forward regarding this existing embankment. We are also coordinating with FEMA on proposed shallow flooding floodplain zones for certain areas through the Town of Crested Butte. Once approved by FEMA, the approach may be used in other Colorado Counties where appropriate. Gunnison has expressed concerns regarding the hydraulic modeling methodology along the Gunnison River. It is currently a two-dimensional (2D) hydraulic model, and they are requesting consideration of a 2D-informed 1-dimensional (1D) model for regulatory purposes.

- Gunnison Countywide BLE: Phase 2 kickoff meeting with communities took place on January 17, 2023, to discuss the next steps in the Risk Map process and confirmed the proposed reaches for detailed study. We are currently waiting to get concurrence from the county on the proposed path forward, especially regarding the hydraulic modeling methodologies to be used for certain flooding sources. We will schedule coordination meetings for mid-July to wrap up the scope of work details and get started with surveying and hydrologic and hydraulic modeling for the study.

**Rio Grande Basin** – Alamosa, Costilla, and Mineral Counties have ongoing studies:

- Alamosa County BLE: Communities have reviewed materials from the project kickoff meeting. Next steps include developing BLE and draft mapping data for Phase 1 of the countywide study (expected to be ready later this year). We are coordinating with the City of Alamosa, USACE and FEMA, as the City works toward certification for portions of the existing levee system.
- Costilla County Phase 2-3: Our Consultant is now able to use the new high-resolution LiDAR data from the 2020 San Luis Valley acquisition to develop revised flood hazard information for modeling the remaining effective floodplain segments. Distribution of the FIRM panels showing the additional data is required before the project moves toward LFD. We are working with the Contractor for a new scope of work and subsequent contract to cover this additional data development for these required stream reaches.
- Mineral County/City of Creede LOMR: The Willow Creek LOMR to support certification of the existing levee in the City of Creede has been issued. This LOMR meets FEMA's accreditation requirements to allow flood hazard mapping to reflect the levee providing flood protection for portions of the community. Mineral County preliminary distribution took place on January 13, 2023, and we are preparing to hold the CCO and Public meetings in the coming weeks.

**Arkansas Basin** – Lake, Chaffee, Custer, Fremont, Pueblo, El Paso, Huerfano, Las Animas, Otero, Bent, Prowers, Baca, Crowley, and Kiowa Counties have ongoing studies:

- Lake County Phase 2: Hydraulic modeling along Georgia Gulch is moving forward. Next steps include submitting the hydraulics to FEMA for approval and progressing with the floodplain mapping. CWCB has been coordinating with FEMA on the best approach for mapping areas of shallow flooding along Georgia Gulch. We anticipate a path forward in the coming weeks.
- Chaffee County Phase 2: Field survey complete. Wrapping up hydrology development. CWCB has been discussing the Chalk Cliffs area with FEMA and the County to determine the best approach for providing updated information that will be useful for regulating development. This may result in providing supplemental non-regulatory products for debris flow as well as flood hazards. We are closely coordinating with the watershed restoration program folks within our section to make sure we produce useful products for the Chaffee County communities.

- Custer County BLE: Phase 2 Kickoff materials are being prepared for an anticipated meeting in the coming months. We had a recent coordination call with the County to discuss the scope of work expectations and are waiting to get confirmation on the last few stream studies.
- Pueblo County BLE: The Phase 2 scope of work has been finalized. The City of Pueblo has requested a potential Mitigation Technical Assistance project to further analyze risk around a local ditch. The Pueblo pre- levee assessment work is on hold. CWCB is working with FEMA to scale back the original scope for the assessment with language and level of detail that aligns with FEMA's authority relative to levees.
- Huerfano County Phase 2: Our Contractor finished revising the BLE hydrology and hydraulic analyses based on a FEMA-approved hydrology methodology. The revised hydrologic modeling results in more representative runoff characteristics for the watershed. Detailed hydraulic modeling for stream reaches scoped in Phase 2 is wrapping up. A Flood Risk Review meeting will be scheduled with communities in the near future.
- Bent County: This project is on hold as CWCB and FEMA allow the levee sponsors to work towards completing the Arkansas River South Levee analysis and certification. The existing levee has previously provided flood protection to the City of Las Animas and portions of unincorporated Bent County. The levee sponsors have retained a contractor to obtain certification and accreditation for the levee to be reflected as providing flood protection in the Bent Countywide Risk MAP study. CWCB, FEMA, and USACE will continue to coordinate and support the communities and levee sponsors as progress toward levee certification continues. In addition, CWCB has provided state funding to develop an Emergency Preparedness Plan and Interior Drainage Analysis for this levee. The EPP has been provided to CWCB for review. Both products are required and will be included by the levee sponsors as part of their levee certification package. CWCB has made a one-time funding contribution for the sponsors to complete the geotechnical evaluation. This evaluation is key in providing data to allow an accurate assessment and identification of the level of effort needed to obtain levee certification.
- Otero County: Floodplain mapping will be revised based on unrealistic hydrology tie-ins from the Apishapa River area. The subsequent delay to address changes will push the next community meeting into the summer months.
- El Paso Phase 2 and Templeton Gap (T-Gap) Levee: Data Development continues for updated hydrologic data and hydraulic modeling for the El Paso countywide Risk MAP study. CWCB has provided funding to support coordination between our Risk MAP team and the LOMR Review Partners Team to coordinate consistency in hydrology and hydraulic modeling approaches for ongoing and proposed development underway within these communities. The study also includes addressing data gaps noted in the Templeton Gap pre-levee analyses. While the levee has been shown to provide flood protection in the past, it is not certified. CWCB's team is working with the City of Colorado Springs, the USACE and FEMA on updated flood hazard mapping in this area. Certification is required to allow the revised flood hazard mapping to

reflect the levee providing flood protection. A coordination meeting with these stakeholders occurred February 12<sup>th</sup>. The City of Colorado Springs has funded revised hydrology for the Templeton Gap area that will be used in any hydraulic updates. The El Paso County Phase 2 hydrology deliverable (including the Templeton Gap hydrology) will be going to FEMA for review in late July.

- Las Animas County Phase 2: We will be repurposing FEMA FY22 grant funds originally identified for Phase 3/4 work to help cover the additional data development for flooding sources requested by communities. Survey efforts are complete for the detailed study reaches and we will be getting revised hydrology developed next.
- Fremont County Phase 2: CWCB is wrapping up detailed hydraulic model development for Phase 2. This includes flood hazard mapping along reaches of specific flooding sources. Floodway development is also taking place. Data will be provided to FEMA for review and approval in the near future.
- Prowers County Phase 2: Base floodplain models are complete and are currently under FEMA review. Once FEMA approves the base floodplain, floodway analysis will be performed and submitted for FEMA review and approval. The Flood Risk Review meeting is anticipated for summertime.
- Towns of Granada/Holly/Lamar (Prowers County) Pre-Levee assessments: The Lamar Levee Analysis and Mapping Procedure (LAMP) is in progress. State-funded Interior Drainage Reports and Emergency Preparedness Plans (EPPs) are with CWCB for review.
- Kiowa County: A countywide BLE/Discovery effort will be initiated for all flooding sources with drainage areas greater than a square mile within the county. A kickoff meeting with communities will be scheduled in the near future.
- Baca County: A countywide BLE/Discovery effort has been kicked off and communities received meeting materials. We are working to prepare the Discovery meeting materials and expect another community meeting in the next couple of months.
- Crowley County: A countywide BLE/Discovery effort will be initiated for all flooding sources with drainage areas greater than a square mile within the county. A kickoff meeting with communities will be scheduled in the near future.

**Yampa/White Basins** –Moffat County has an ongoing Risk Map study:

- Moffat County: Hydraulic models for specific flooding sources have been approved by FEMA. We are coordinating with FEMA on the best approach for mapping shallow flooding zone areas within the City of Craig. Once the shallow flooding mapping process has been approved by FEMA, floodplain mapping will be updated in coordination with the City of Craig.

**Dolores/San Juan Basins** – La Plata, Dolores, Montezuma, Archuleta, and San Juan Counties, along with the Southern Ute Indian Tribe (SUIT) and Ute Mountain Ute (UMU) Tribe nations, have ongoing studies.

- Animas Watershed Phases 3-4 (La Plata, San Juan, Archuleta, and the SUIT): La Plata County PMR– Letter went out to Ignacio and La Plata County on requirements for updating floodplain maps. Some revised preliminary maps resulting from the due process will require a 30-day comment period. The revised mapping is with FEMA for review. Archuleta County PMR– The LFD was issued April 5<sup>th</sup>, and the updated flood hazard information will become effective October 6<sup>th</sup>. CWCB’s Contractor is working to submit the final Technical Study Data Notebook (TSDN). San Juan County PMR – The revised flood hazard data went effective on May 5, 2023, so the San Juan County PMR project is wrapped up.
- Southwest Colorado (Montezuma, Dolores, San Juan, La Plata, Archuleta, Hinsdale, Mineral Counties and the SUIT and UMU Tribes) BLE: Our Contractor submitted BLE and the Discovery deliverables for FEMA review and approval. Due to the large size of the submittal information, we expect a few more weeks prior to receiving comments. The scope of work will be finalized for detailed study stream reaches once Phase 2 kickoff meetings take place with communities and tribal nations impacted by flood hazard modifications. These will be coordinated and are expected to take place over the next few months.

**Multi-Basin Risk Map Projects**: Elbert, Mesa, Hinsdale, Lincoln, Saguache, San Miguel, and Teller Counties have ongoing studies that span multiple water basins.

- Elbert County: Phase 2 (Data Development) is underway. CWCB’s Contractor is developing hydrology for stream reaches included in this phase.
- Mesa County Phase 2: Surveying complete. Hydraulics for the Colorado River are in the FEMA review/comment stage. The remaining countywide flood hazard mapping will go out for review soon. Indian Wash hydrology review comments from FEMA are being addressed and resubmitted.
- Flood Risk Information System (Mesa County): Based on additional staff input, minor modifications are being performed on the draft website for this Flood Risk Information System (FRIS) pilot project. CWCB and our Contractor will meet with communities in Mesa County to showcase the site and obtain additional input. Once community feedback has been adequately addressed, the site will go live. This project was presented during the annual Association of Stormwater and Floodplain Managers conference in mid-May.
- Hinsdale County/Lake City Partial Countywide: The 90-day appeal and comment period began February 10, 2023; however a new appeal period will be required due to omission of required FEMA language in the original newspaper publications. The new 90-day appeal period will be from July 14, 2023 to October 12, 2023.
- Hinsdale Countywide BLE: A Phase 2 kickoff meeting with communities is anticipated in the coming months so the Phase 2 scope may be finalized.

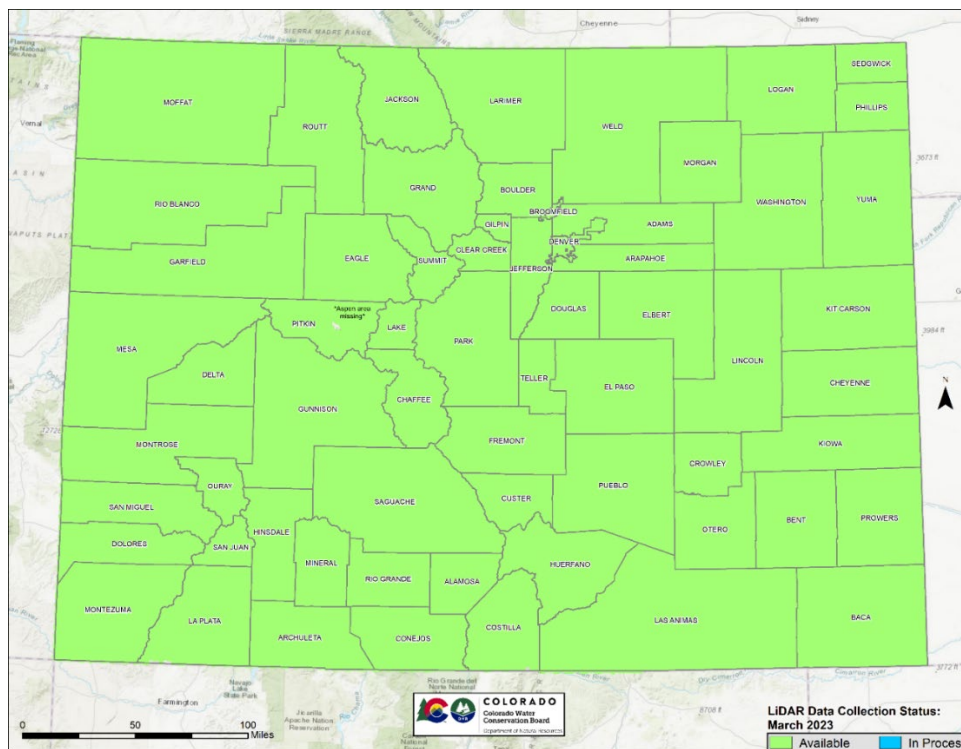
- Teller County Phase 2: CWCB's Contractor has completed the revised hydrologic analyses for Trout Creek and Fountain Creek. Additional analysis was required to verify flows were reasonable and in line with existing flood flows for the same flooding sources in adjacent counties. Results will be provided to CWCB in a few weeks for review. Coordination will take place to discuss the revisions and obtain concurrence from impacted communities and adjacent counties. This will allow the corresponding hydraulic analyses to be completed for this project.
- San Miguel Countywide BLE: A countywide BLE/Discovery effort will be starting soon. An in-person kickoff meeting with communities will be scheduled in the coming months. This also provides an opportunity to coordinate with communities on incorporation of their recent restoration project into the San Miguel hydraulic modeling and floodplain mapping in Telluride and allow providing updates on the San Miguel County PMR project for select streams (more updates under the CHAMP Ph3 category below).
- Lincoln Countywide: A countywide BLE/Discovery effort has begun for flooding sources with drainage areas greater than a square mile that were not included with the ongoing PMR revisions (summarized below). CWCB's Contractor is almost done with BLE modeling, and a Discovery meeting will be scheduled with communities to review results in the near future.
- Colorado Hazard Mapping Program (CHAMP) Phase 3: This set of studies originated from the Colorado Senate Bill (15-245) which was put forth as a response to the destructive 2013 flooding along the Front Range. This bill released funding to better assess and map various flood related hazards, including debris flows and erosion, throughout Colorado. As such, CWCB funded a paper inventory reduction effort through various counties across the state that were still using old paper floodplain maps and needed updated flood risk information, especially if they were affected by these floods and the local conditions were clearly changed. Several county projects that were scoped as part of this CHAMP effort are still ongoing, including the ones listed below.
  - San Miguel County: This PMR has been on hold for two years pending as-constructed data from the Town of Telluride for the Valley Floor Restoration project. The Valley Floor Restoration project completely re-aligned the San Miguel River to its historic location through open space areas west of the Town. The dramatic changes along the San Miguel River resulting from the project are being revised with a LOMR on the effective FIRM and FIS information. Once the LOMR has been issued, the project data will be incorporated into the updated San Miguel River hydraulic analysis and flood hazard mapping for the PMR. CWCB will coordinate with San Miguel County communities through in-person meetings to wrap up the Data Development (Phase 2) before moving forward with development of preliminary products (Phase 3).
  - Lincoln County Phases 2-3: The CCO and Public Meetings for revised flood hazard data along select major stream reaches took place on December 5, 2022, and we're waiting on the Federal Register publication. The appeal period will follow once publication in the Federal Register and local newspapers take place. The process provides communities and property



owners 90-days to review, comment on, or appeal preliminary flood hazard products. The appeal period begins on June 29, 2023.

- Saguache County: Floodplain mapping has been approved by FEMA for all areas submitted outside of the Town of Crestone. A resilience meeting for areas outside the Town is anticipated to take place soon. The Town has significant alluvial fan considerations that will need to be addressed separately (outside the scope of the ongoing study). The Town is looking at risk mitigation projects to minimize hazards associated with the alluvial fan areas. Once a path forward has been determined by the Town, hydraulic analysis and flood hazard mapping will resume along North Crestone Creek.

**LiDAR acquisition:** As of February 2023, we have statewide LiDAR coverage (except for a small area in Pitkin County in and surrounding the Town of Aspen). To be removed for future status updates.



*(Terri Fead and Marta Blanco Castaño)*

### Stream Management Planning – Workshops

Stream Management Planning (SMP) is a process that allows communities to assess watershed health through various measurements of river health. This collection of data-driven assessments allows communities a way to understand baseline and changing conditions. This allows stakeholders to make informed discussions on ways to manage, protect, conserve, enhance and restore their stream systems.

The Colorado Water Conservation Board (CWCB) works closely with the River Network to host [coloradosmp.org](http://coloradosmp.org). This website is the main resource for all things related to SMPs. SMPs can get very intricate and complicated very quickly. It is often a large and cumbersome undertaking to start an SMP. Due to the diversity of stakeholders and river systems throughout our State, the CWCB and River Network are constantly trying to improve upon processes and create new tools and guidance to help make SMPs more approachable and successful to more communities.

River Network recently took the lead on the new [West Plum Creek SMP](#) in Douglas County. The West Plum Creek SMP provides unique challenges and opportunities. Colorado Parks and Wildlife (CPW) have identified 6 species of concern in this biologically rich transition zone. The River Network, CPW and Douglas County graciously set up a two-day workshop to West Plum Creek for practitioners, consultants, landowners, and anyone interested in learning more about SMPs. Three CWCB employees attended. The agenda consisted of networking, fish identification with CPW, macroinvertebrate sampling with River Watch, facilitation 101 training with Strategic by Nature, aquatic habitat quantitative assessments with Alba Watershed Consulting and general evaluations.

The CWCB prioritizes SMPs and is a funding partner for many of the SMPs across the state. It is important that we stay current with new SMPs, best management practices, new resources, new techniques, new technologies and ensure that we can help more communities get involved in the SMP process. The River Network has set up a second workshop in the Gunnison basin, later this summer. We look forward to learning and engaging in a completely different landscape with a different set of challenges and opportunities.

(Steve Reeves)

## **2023 American Water Resources Association Conference**

The 2023 AWRA Conference will take place in Denver, CO from July 17 through July 19, 2023. The theme for this year's conference is "Connecting Land and Water for Healthy Communities," and CWCB staff was selected to present our fluvial hazard zone mapping program within the session titled "Maximizing Water Resources through Integrating a Multi-Benefit Approach into Land Use Planning."

Staff will explain how planning for fluvial hazards in stream corridors is an essential component of community planning and the long-term protection of our water resources. As many have observed, damage to structures located outside of FEMA floodplains has been a common occurrence due to fluvially-induced erosion and sedimentation – we need to challenge the status quo that using inundation-based floodplain maps to plan for river processes and functions is the only tool we should be using. This presentation will provide an overview of how Fluvial Hazard Zone mapping can be cost-effectively implemented to provide planners with information to reduce threats to life and property from flood hazards, as well as possibly reap numerous secondary benefits for the community related to ecological and human health. This presentation seeks to challenge the planning community to rethink typical methods of stream corridor planning and transform our understanding of streams as living, dynamic corridors (not lines) that provide a multitude of benefits to a community when protected with this planning tool.

Andrea Harbin Monahan

## **Active Snowpack Season Leads to Active Runoff Season Leads to Active Rainfall Season – And Monsoon Season Hasn't Even Arrived Yet (as of this writing)!**

The 2022-23 snowpack accumulation season has resulted in higher than average snowpack across the entire western slope area of the state, with readings in the SW basin higher than most stakeholders can ever remember (183% as of May 4), and very high readings present also in the Gunnison (168%) and Yampa (139%) watersheds, and elevated readings in all other watersheds with the exception of the Arkansas Basin.

Local and state officials had been preparing for elevated runoff for many weeks leading up to the runoff season. This included planning for reservoir operations to accommodate high seasonal inflows, maintenance of infrastructure such as bridges and culverts, extensive coordination, and robust outreach and public awareness programs.

CWCB staff assisted local officials and the State Division of Homeland Security and Emergency Management with monitoring and technical assistance. Like in past years, staff participated in the State Recovery Task Force (SRTF), normally an entity that is activated following a disaster but which was active this year in a preparatory state. The Flood Threat Bulletin, SNODAS, and other state resources have been actively used by the SRTF to coordinate preparedness activities.

Indeed, runoff problems began to occur as early as the second week of April when an unusually strong warm front passed through the state while large amounts of low elevation snowfall still remained on the ground. This warm spell lasted 3-4 days and resulted in daily records being set all around the state, including the earliest historical reading of 85 degrees in Denver two days in a row (which set the record high by over 5 degrees each day). Isolated flooding problems occurred in many areas of western Colorado, with the most visible being in the Town of Dolores and along Dry Creek in the Town of Hayden. CDOT experienced numerous highway outages in the forms of swollen rivers and sinkholes that formed in multiple areas. Mudslides occurred in a few areas – most notably in the Willow Creek watershed between Granby and Walden (impacted by the East Troublesome Fire) and in the western end of Glenwood Springs and near the Hanging Lake Trailhead.

A Presidential Disaster for snowmelt flooding has not been declared in Colorado since 1984. Despite the isolated instances of snowmelt flooding, overall damages did not reach thresholds needed to request a Presidential Flood Disaster. As in recent past high snowpack years, the runoff proceeded in a relatively orderly fashion – with a few isolated exceptions. Part of the reason for this was help from Mother Nature – both May and June saw consistently warm but not hot weather, the perfect recipe for snow to run off the mountain without causing regional level floods. As an example serving as a proxy for the Colorado weather, Denver finished the month of June with only a single day in the entire season above 87 degrees (far cooler than recent Mays and Junes have been), yet didn't even register in the coolest 20 Junes throughout the 125+ year history.

The same cannot be said for the rain season on the Eastern Plains. The months of May and June were record setting in many areas. Certain areas in the Urban Corridor between Denver and Colorado Springs experienced 20 inches of rain during these two months – more than the annual average! Denver experienced it's wettest June on record with 6.1 inches recorded at the official measurement station at Denver International Airport. The previous June record was 4.96 inches back in 1882. Many areas throughout the Eastern Plains, especially the northern half, also experienced well above average rainfall. Many of the tributaries leading to both the South Platte and Arkansas Rivers saw their highest stream

flows in years, with the result being that both the South Platte and Arkansas Rivers carried extended flood warnings lasting several days.

Severe weather was experienced throughout June. Well publicized events of very large hail occurred in Denver and the Northeast Plains, and a tornado tore through Highlands Ranch causing much landscaping damage but blessedly limited structural damage.

CWCB Flood Section Staff is assisting the Colorado Office of Emergency Management with a Preliminary Damage Assessment in support of requesting a Presidential Flood Declaration due to flooding resulting from heavy rains throughout the month of June. The fieldwork for the assessment took place in the last week of June and data is still being compiled in support of a request for disaster declaration, which would open up federal disaster funds for the purposes of repairing damaged public infrastructure. During this initial assessment, only El Paso and Elbert Counties were evaluated. However, there is discussion of increasing the scope of this evaluation and request to include the Counties of Weld, Lincoln, Kit Carson, Logan, and Washington as well as many of the Denver metro area counties and possibly others. This is a fluid situation that is likely to change prior to the board meeting.

It is worth noting that a Presidential Flood Disaster is a relatively rare event in Colorado. Since 1999, only two other events have reached this mark (2013 and 2015).

The July forecast by NOAA indicates a slight tilt toward continued cool temperatures in northeast Colorado and a slight tilt towards wet conditions throughout the Eastern Plains with a slight tilt towards drier than normal conditions in the Four Corners Area. The El Nino Southern Oscillation (ENSO) pattern has firmly (and quickly) shifted to an El Nino regime that generally (though not always!) results in higher odds of more precipitation throughout the state, especially during the non-winter months.

(Kevin Houck)

### **Wildfire Ready Watersheds – Priority Area Alluvial Fan Mapping**

CWCB staff are partnering with the Colorado Geological Survey (CGS) to develop hazard datasets to support planning in high priority areas identified through the Wildfire Ready Watersheds program. CGS will develop lidar-based alluvial fan mapping to aid CWCB's debris flow mapping for Wildfire Ready Watersheds in a dozen or more counties that were identified as highly susceptible to post wildfire hazards. The precise extent of alluvial fans is fundamental to understanding post-fire debris flow impacts. Available lidar allows mapping these landforms at less than 1-meter, or better, resolution for the first time.

Alluvial fans are at risk of flooding and debris flows. Post-wildfire debris flows in the burn scars of Cameron Peak (Black Hollow in Laramie County), and Spring Creek (Huerfano County in several locations) demonstrate the increase in post-fire debris flow magnitude. Active and inactive portions of alluvial fan landforms are at risk in a post-fire debris flow scenario.

CGS proposes to use lidar to map alluvial fan landforms at a 1:24 000 scale in specific counties identified as priorities by CWCB.

The alluvial fan landform will be mapped using lidar-generated 5-ft contours on slopes <15° located downslope of the fan's apex, the feeder channel, and the source area. Metadata will be included so the data can be precisely referenced. Alluvial fans representative of specific data sets will be field verified. Geological professionals with GIS expertise at CGS and the Colorado School of Mines (CSM) will perform mapping reviews. A map package containing the alluvial fan shape files and supported metadata will be provided to CWCB.

This intergovernmental agreement is critical to providing reliable hazard data to support local [Wildfire Ready Action Plans](#). CWCB staff developed this collaborative approach to support data needs for both agencies as well as the needs of local stakeholders.

-Chris Sturm

## WATER SUPPLY PLANNING SECTION UPDATES

### July 2023 Directors Report WSP

#### **Director Report Paragraph:**

The Water Supply Planning section has several updates to share. The section hosted the Colorado Drought Summit at History Colorado in Denver on May 31 & June 1. The Summit was attended by over 275 people from across Colorado and included about 70 speakers and panelists. The session recordings are available on [engagecwcb.org](https://engagecwcb.org). Thanks to all who made the event a great success.

The Water Supply Planning section also hosted the Governor's Urban Landscape Conservation Task Force for its second meeting in Salida on June 27 to continue making progress on Water Plan Action 1.7 to identify turf replacement options that support transformative landscape change. That meeting recording is available on CWCB's Youtube channel.

Shifting to the state's turf replacement program, which has been up and running since January of this year; July 1st marked the opening of the second (and final) application period for the program. The program will be accepting applications until August 31 and due to limited remaining funding, this round is expected to be quite competitive. Please contact Jenna Battson for any questions related to an application or the program, in general.

Work continues on the Colorado Water Loss Initiative and Kevin Reidy is developing a scope for a statewide water loss committee to help institutionalize water loss control and management across the state. This is timely as we will have the opportunity, during the [North American Water Loss conference](#), for the CO Water Loss Committee to meet up with other water loss committees from all over the country and Canada.

The last Water Availability Task Force meeting was held on June 20. Colorado is now seeing Standardized Precipitation Index data within the normal to wet ranges – not indicative of a drought pattern across most of the state. In fact as of June 20, 93% of the state was not in any dry category at all according to the U.S. Drought Monitor. This is the lowest drought coverage Colorado has experienced since 2019, following three continuous years with D3-D4 drought. In response to these improved conditions, we have moved to deactivate the Drought Task Force and the Agricultural and Municipal Impacts Task Forces that were activated in 2020.

To stay tuned in to these updates, join us for the next virtual meeting of the Water Availability Task Force on July 25th, ***which will be led by Water Supply Planning's newest staffer, Emily Adrid. Emily started in June as the state's Water Planning and Climate Impacts Specialist. Emily comes to CWCB after completing her Masters at the University of Michigan. She previously worked for the Town of Erie, the World Wildlife Fund, and the United Nations Framework Convention on Climate Change - Environment Program. Welcome to the CWCB, Emily!***

Upcoming events:

- **Colorado Water Loss Initiative**
  - North American Water Loss conference on December 5-7, 2023 Denver
- **C9 Summit**
  - November 14th, in conjunction with the November Board Meeting
  - Colorado 9 Roundtable (C-9) Summit is an event to help align IBCC, roundtable and board discussions and foster cross-basin collaboration.

- **WSRF Application Deadline** - August 1
- **AWRA Specialty Conference- Connecting Land and Water for Healthy Communities** (Denver - July 17-19, 2023) [https://www.awra.org/AWRA/Members/Events\\_and\\_Education/Events/2023\\_Summer\\_Conference/2023\\_Summer\\_Conference.asp](https://www.awra.org/AWRA/Members/Events_and_Education/Events/2023_Summer_Conference/2023_Summer_Conference.asp)

### **Water Supply Reserve Fund Grants Director's Report – July 2023**

#### **WATER SUPPLY RESERVE FUND GRANTS:**

The following table summarizes the Water Supply Reserve Fund Grants \$50,000 and under that will be sent to the CWCB Acting Director, Lauren Ris, for approval.

<b>Basin</b>	<b>Applicant/Grantee</b>	<b>Name of Water Activity</b>	<b>Basin(s) Account Request</b>	<b>Total Request</b>	<b>Staff Funding Recommendation</b>
Colorado	Colorado Ag Water Alliance	White River National Forest Pond Maintenance	\$31,500	\$31,500	\$31,500
Colorado	Eagle River Watershed Council	Eagle River Community Water Plan Completion & Implementation	\$32,201.25	\$32,201.25	\$32,201.25
Colorado	Roaring Fork Conservancy	Investigating Social & Environmental Dimensions of Water Conservation	\$49,600	\$49,600	\$49,600
Rio Grande	Trinchera Irrigation Company	Levy Diversion	\$16,500	\$16,500	\$16,500

## INSTREAM FLOW

### Director's Report Attachment – July 19-20, 2023 CWCB Meeting Stream and Lake Protection Section De Minimis Cases

The following table summarizes applications that have the potential to injure the Board's instream flow water rights, but the impact is considered de minimis. In these cases, the cumulative impact to the Board's right is less than 1%. Pursuant to ISF Rule 8(e) (the de minimis rule), staff has not filed a Statement of Opposition in these cases and has provided the required notification to the Division Engineers and applicants.

Applicant Case No.	Water Div.	Applicant	Stream/ CWCB Case No.	ISF Amount (cfs/date)	Individual Injury (%)	Cumulative Injury (%)	Count
23CW3018	4	Telluride Pines Home Owners' Association, Inc	Leopard Creek/ 4-84CW438	2.5 (1/1 - 12/31)	0.20000 0.20000	0.35240 0.32520	4
17CW0009	5	Nancy Julius and Elizabeth Recks	Plateau Creek/ 5-86CW226	16 (1/1 - 12/31)	0.04140 0.00100	0.77443 0.46688	7
23CW3040	5	William and Sharon Spurlin	Fraser River/ 5-90CW308B	30 (5/15 - 9/15) 19 (9/16 - 5/14)	0.00060 0.00090	0.03727 0.04189	17

### July 19-20, 2023 Board Meeting Instream Flow and Natural Lake Level Program Summary of Resolved Legal Protection Cases

The Board's Instream Flow ("ISF") Rule 8i(1) states:

In the event the pretrial resolution includes terms and conditions preventing injury or interference and does not involve a modification, or acceptance of injury or interference with mitigation, the Board is not required to review and ratify the pretrial resolution. Staff may authorize its counsel to sign any court documents necessary to finalize this type of pretrial resolution without Board ratification.

Since the last Board Meeting, staff has resolved issues of potential injury to CWCB's ISF water rights in the following water court cases. Staff, along with the Attorney General's Office, has stipulated in 6 cases in which CWCB had filed a Statement of Opposition. Two cases were dismissed by the Court. Staff obtained an agreement via a letter-in-lieu of filing a Statement of Opposition in 2 cases.

#### A. STATEMENTS OF OPPOSITION

##### (1) Case No. 20CW3145 (Water Division 1) - Application of Lincoln Hills Water, LLC

The Board ratified this Statement of Opposition at its January 2021 meeting. Applicant requested "Conditional Water Rights, Change of Water Right, Appropriative Right of Exchange and Approval of



Augmentation Plan". Upon another Opposer's motion, the Court entered an Order to Dismiss without Prejudice on May 5, 2023. This case is closed.

The CWCB holds instream flow ("ISF") water rights, including the following, in Water Division 1 in the St. Vrain River watershed that could have been injured by this application:

<b>Case Number</b>	<b>Stream</b>	<b>Upper Terminus</b>	<b>Lower Terminus</b>	<b>CFS Rate (Dates)</b>	<b>Approp. Date</b>
80CW0379	South Boulder Creek	outlet Gross Res	USGS gage 06729500	15 (5/1 - 9/30) 6 (10/1 - 4/30)	12/02/1980
80CW0379	South Boulder Creek	USGS Gage 06729500	South Boulder Road bridge	2 (10/1 - 4/30) 15 (5/1 - 9/30)	12/02/1980

## **(2) Case No. 21CW3236 (Water Division 1) - Application of City of Boulder**

The Board ratified this Statement of Opposition at its March 2022 meeting. Applicant requested "Approval of Conditional Water Storage Rights and Conditional Appropriative Rights of Substitution and Exchange". Staff, in cooperation with the Attorney General's Office, has negotiated a settlement to ensure that the CWCB's instream flow water rights will not be injured. CWCB's stipulation was approved by the Court on June 13, 2023. This case remains pending before the water court Referee.

The CWCB holds instream flow ("ISF") water rights, including the following, in Water Division 1 in the St. Vrain Creek watershed that could have been injured by this application:

### **Appropriated ISF Water Rights**

<b>Case Number</b>	<b>Stream</b>	<b>Upper Terminus</b>	<b>Lower Terminus</b>	<b>CFS Rate (Dates)</b>	<b>Approp. Date</b>
94CW0019	North Boulder Creek	confl Lakewood Res inlet	confl N & M Boulder Creeks	5 (4/1 - 9/30) 2 (10/1 - 3/31)	11/10/1993
94CW0020	North Boulder Creek	hdgt Silver Lake div structure	confl Lakewood Res inlet	4 (4/1 - 10/31) 1.5 (11/1 - 3/31)	11/10/1993
W-9375 (1978)	Middle Boulder Creek	confl NF & SF M Boulder Ck	inlet Barker Res	12 (1/1 - 12/31)	07/11/1978
86CW0300	South Fork Middle Boulder Creek	confl Jasper Creek	confl NF Middle Boulder Creek	4 (10/1 - 3/31) 8 (4/1 - 9/30)	09/05/1986
80CW0379	South Boulder Creek	outlet Gross Res	USGS gage 06729500	15 (5/1 - 9/30) 6 (10/1 - 4/30)	12/02/1980
80CW0379	South Boulder Creek	USGS Gage 06729500	South Boulder Road bridge	2 (10/1 - 4/30) 15 (5/1 - 9/30)	12/02/1980
W-7636 (1974)	Boulder Creek	PSC Hydro Plant outfall	75th Street bridge	15 (1/1 - 12/31)	10/01/1973
94CW0018	Boulder Creek	confl N & M Boulder Creeks	PSC Hydro Plant outfall	15 (4/1 - 10/31) 6 (11/1 - 3/31)	11/10/1993

#### **Donated/Acquired Water Rights**

<b>Case Number</b>	<b>Stream</b>	<b>Upper Terminus</b>	<b>Lower Terminus</b>	<b>CFS Rate (Dates)</b>	<b>Approp. Date</b>
79CW0308	Boulder Creek	hdgt Boulder & White Rk Ditch	75th Street bridge	1 (4/1 - 10/31)	06/01/1862
90CW0193	Boulder Creek	confl N & M Boulder Creeks	75th Street bridge	varies 0.5-15.0 (btwn 1/1 - 12/31)	varies (1860-1956)

In addition to standard terms regarding measuring devices, accounting and retained jurisdiction, the Applicant has agreed to the following additional protective terms and conditions:

- The substitutions and exchanges may be operated only at times when a live stream exists between the exchange-from and exchange-to locations involved and must be limited to no more than the minimum streamflow between the exchange-from point and exchange-to point that would have existed but for the exchange. Boulder must ensure that any measuring devices determined to be necessary for administration and approved by the Division Engineer are installed prior to operating any exchange.
- The substitutions and exchanges may be operated only when all vested water rights, including decreed exchanges and the instream flow water rights decreed to the CWCB located between the exchange-from location(s) and the exchange-to location(s) that are senior to the substitutions and exchanges (i) are satisfied to the extent of their calls, or (ii) are out of priority or required to bypass water to a senior downstream water right. Water rights shall not be deemed to be out of priority if

they would be able to divert but for Boulder's diversion under the subject substitutions and exchanges. The CWCB holds instream flow water rights, including the [appropriated ISF water rights listed above], that were decreed prior, and are senior, to the conditional appropriative rights of substitution and exchange confirmed in this decree.

### **(3) Case No. 20CW3138 (Water Division 5) - Application of Winter Park Water and Sanitation District**

The Board ratified this Statement of Opposition at its March 2021 meeting. Applicant requested "Appropriative Rights of Exchange, Conditional Water Storage Right, and a Plan for Augmentation". Staff, in cooperation with the Attorney General's Office, has negotiated a settlement to ensure that the CWCB's instream flow water rights will not be injured. CWCB's Stipulation was approved by the Court on June 19, 2023. This case remains pending before the water court Referee.

The CWCB holds instream flow ("ISF") water rights, including the following, in Water Division 5 in the Colorado River Headwaters watershed that could have been injured by this application:

#### **Appropriated ISF Water Rights**

<b>Case Number</b>	<b>Stream</b>	<b>Upper Terminus</b>	<b>Lower Terminus</b>	<b>CFS Rate (Dates)</b>	<b>Approp. Date</b>
80CW0447	Colorado River	hdgt Windy Gap Project div	confl Williams Fork River	90 (1/1 - 12/31)	07/08/1980
80CW0446	Colorado River	confl Williams Fork River	confl Troublesome Creek	135 (1/1 - 12/31)	07/08/1980
80CW0448	Colorado River	confl Troublesome Creek	confl Blue River	150 (1/1 - 12/31)	07/08/1980
90CW0302	Fraser River	confl Jim Creek	confl Vasquez Creek	8 (5/15 - 9/15) 3.5 (9/16 - 5/14)	11/27/1990
90CW0307	Fraser River	confl Vasquez Creek	confl St Louis Creek	5 (9/16 - 5/14) 11 (5/15 - 9/15)	11/27/1990
90CW0315	Fraser River	confl St Louis Creek	confl Ranch Creek	11 (9/16 - 5/14) 17 (5/15 - 9/15)	11/27/1990
90CW0308	Fraser River	confl Ranch Creek	confl Crooked Creek	17 (5/15 - 9/15) 11 (9/16 - 5/14)	11/27/1990
90CW0308	Fraser River	confl Crooked Creek	confl Colorado River	30 (5/15 - 9/15) 19 (9/16 - 5/14)	11/27/1990

#### **Donated / Acquired ISF Water Rights**

<b>Case Number</b>	<b>Stream</b>	<b>Upper Terminus</b>	<b>Lower Terminus</b>	<b>CFS Rate (Dates)</b>	<b>Approp. Date</b>
11CW0152	Fraser River	Denver Water Diversion at Fraser River	Confluence of Jim Creek	10 (1/1 - 12/1)	

In addition to standard terms regarding measuring devices, accounting and retained jurisdiction, the Applicant has agreed to the following additional protective terms and conditions:

- At such times that a call is made for an instream flow water right listed in [above] that is senior to a particular water right of the District, or a call is made for an instream flow water right listed above, within the exchange reach that is senior to an exchange operation under the augmentation plan for the District's water right invoked in response to a downstream water right call, to the extent necessary the District shall curtail diversions under that water right or replace out-of-priority depletions attributed to that water right upstream of the location of the administered instream flow water right call.
- The District has one source of augmentation supply, Winter Park Reservoir No. 1, not currently constructed, upstream of the CWCB's instream flow water right decreed in Case No. 90CW302. In the event the instream flow water right decreed in Case No. 90CW302 is unmet and being administered subject to the limitations above, the District shall augment with a downstream augmentation source by exchanging water upstream pursuant to a senior exchange, curtail diversions, or replace with an upstream augmentation source.

#### **(4) Case No. 21CW3132 (Water Division 5) - Application of Eagle-Vail Metropolitan District**

The Board ratified this Statement of Opposition at its January 2022 meeting. Applicant requested "Water Rights, Changes of Water Right, and Approval of Plan for Augmentation and Exchange". Staff, in cooperation with the Attorney General's Office, has negotiated a settlement to ensure that the CWCB's instream flow water rights will not be injured. CWCB's stipulation was approved by the Court on May 22, 2023. All parties have stipulated and the Applicant has filed a motion to enter the decree. This case remains pending before the water court Referee.

The CWCB holds instream flow ("ISF") water rights, including the following, in Water Division 5 in the Eagle River watershed that could have been injured by this application:

<b>Case Number</b>	<b>Stream</b>	<b>Upper Terminus</b>	<b>Lower Terminus</b>	<b>CFS Rate (Dates)</b>	<b>Approp. Date</b>
80CW0134	Eagle River	confl Gore Creek	confl Lake Creek	35 (10/1 - 4/30) 85 (5/1 - 9/30)	03/17/1980
80CW0126	Eagle River	confl Lake Creek	confl Brush Creek	45 (10/1 - 4/30) 110 (5/1 - 9/30)	03/17/1980
80CW0124	Eagle River	confl Brush Creek	confl Colorado River	50 (10/1 - 4/30) 130 (5/1 - 9/30)	03/17/1980

In addition to standard terms regarding measuring devices, accounting and retained jurisdiction, the Applicant has agreed to the following additional protective terms and conditions:

- When there is a call on the Eagle River from any of CWCB's Eagle River instream flow rights decreed in Case Nos. 80CW124, 80CW126 and 80CW134 that would prevent the use of Green Mountain Reservoir water by exchange, the replacement water will be provided by Eagle Park Reservoir or from the historic consumptive use credits. If these replacement sources are unavailable during an instream flow call, the District will cease diversions at the additional Eagle River point of diversion described in paragraph 8 until the CWCB's Eagle River instream flow water rights are satisfied.

**(5) Case No. 22CW3097 (Water Division 5) - Application of M & M Industries, Inc., Cari Elizabeth Mankowski & Eric David Mankowski and Patricia Price & Robert Price**

The Board ratified this Statement of Opposition at its January 2023 meeting. Applicant requested "Change in Surface Point of Diversion". Upon Applicants' motion, the Court entered an Order to Dismiss without prejudice on May 22, 2023. This case is closed.

The CWCB holds instream flow ("ISF") water rights, including the following, in Water Division 5 in the Blue River watershed that could have been injured by this application:

**Appropriated ISF Water Rights**

Case Number	Stream	Upper Terminus	Lower Terminus	CFS Rate (Dates)	Approp. Date
W-3646 (1977)	Boulder Creek	headwaters in vicinity	confl Blue River	3 (10/1 - 4/30) 6 (5/1 - 9/30)	01/19/1977
87CW0297	Blue River	confl Boulder Creek	confl Slate Creek	70 (11/1 - 2/29) 78 (3/1 - 3/31) 90 (4/1 - 4/30) 125 (5/1 - 8/31) 90 (9/1 - 10/31)	10/02/1987
87CW0298)	Blue River	confl Slate Creek	inlet Green Mtn Res @ Doig Gulch	90 (10/1 - 11/30) 85 (12/1 - 2/29) 125 (5/1 - 9/30) 90 (3/1 - 4/30)	10/02/1987
87CW0299	Blue River	outlet Green Mountain Res	confl Colorado River	60 (5/1 - 7/15) 85 (7/16 - 4/30)	10/02/1987

**Donated / Acquired ISF Water Rights**

<b>Case Number</b>	<b>Stream</b>	<b>Upper Terminus</b>	<b>Lower Terminus</b>	<b>CFS Rate (Dates)</b>	<b>Approp. Date</b>
05CW0264	Boulder Creek	hdgt Peabody #1 Ditch	confl Blue River	varies 0.31-3.51 (btwn 5/1 - 10/31)	05/23/1904 & 05/15/1915
05CW0264	Blue River	confl Boulder Creek	inlet of Green Mtn. Reservoir	varies 0.02-3.51 (btwn 5/1 - 10/31)	05/23/1904 & 05/15/1915

**(6) Case No. 21CW3052 (Water Division 6) - Application of Remnant Investors, LLLP, a limited liability limited partnership**

The Board ratified this Statement of Opposition at its March 2022 meeting. Applicant requested “Conditional Water Rights (Surface) and Water Storage Rights”. Staff, in cooperation with the Attorney General’s Office, has negotiated a settlement to ensure that the CWCB’s instream flow water rights will not be injured. CWCB’s Stipulation was approved by the Court on May 17, 2023. The Court entered the Referee’s Ruling on May 17, 2023. This case remains pending before the water court Referee.

The CWCB holds instream flow ("ISF") water rights, including the following, in Water Division 6 in the Upper Yampa River watershed that could have been injured by this application:

<b>Case Number</b>	<b>Stream</b>	<b>Upper Terminus</b>	<b>Lower Terminus</b>	<b>CFS Rate (Dates)</b>	<b>Approp. Date</b>
W-1270 (1977)	Willow Creek	outlet Steamboat Lake Res	confl Beaver Creek	5 (1/1 - 12/31)	09/23/1977
W-1273 (1977)	Willow Creek	confl Beaver Creek	confl Elk River	7 (1/1 - 12/31)	09/23/1977
W-1279 (1977)	Elk River	confl NF Elk River	confl Rock Creek	65 (1/1 - 12/31)	09/23/1977
W-1331 (1977)	Elk River	confl Rock Creek	confl Yampa River	65 (1/1 - 12/31)	09/23/1977
16CW3044*	Willow Creek	outlet of Steamboat Lake	confl Beaver Creek	7 (4/16 - 6/30)	01/26/2016
16CW3044*	Willow Creek	confl Beaver Creek	confl Lester Creek	13 (4/16 - 6/30) 3 (7/1 - 7/31)	01/26/2016

\* Increased

In addition to standard terms regarding measuring devices, accounting and retained jurisdiction, the Applicant has agreed to the following additional protective terms and conditions:

- “The water rights awarded and decreed in this Ruling, Judgment and Decree are junior to and also do not qualify for and shall not be administered as having any entitlement under section 37-92-102(3)(b), C.R.S., as to the [above] instream flow water rights of the Colorado Water Conservation

Board, all of which are located below Steamboat Lake and Deep Creek, which is a stream located above Steamboat Lake.

- This Ruling and Decree does not grant approval for re-creating a natural stream on the private property of Applicant via the Lockhart Ponds Supply Ditch contrary to the Supreme Court holding in *St. Jude's Co. v. Roaring Fork Club, L.L.C.*, 2015 CO 51, ¶ 26, 351 P.3d 442, 451. Applicant does not intend to re-create a natural stream on the private property of Applicant via the Lockhart Ponds Supply Ditch contrary to the *St. Jude's Co.* decision. Accordingly, Applicant shall only operate the Lockhart Ponds Supply Ditch after construction and operation of either or both Lockhart Pond No. 2 and/or Lockhart Pond No. 1.

## **B. LETTERS-IN-LIEU**

The following cases were resolved by Staff through negotiated letters in lieu of filing water court Statements of Opposition. This method of settlement is preferred when facts and time allow such negotiation before the Statement of Opposition period ends. In each case, CWCB staff will continue to monitor the proposed rulings and decrees. In each case, Applicant has agreed to not oppose a motion to intervene if the agreed upon terms are not included. The following were negotiated to resolution:

### **(1) Case No. 23CW3020 (Water Division 1) - Application of Jeffrey E. Buerger, Mountain Mutual Reservoir Company, and North Fork Associates, LLC**

During the February 2023 Water Court Resume Review, CWCB staff identified concerns regarding potential injury to CWCB's instream flow water rights decreed in Case No. 86CW298 on Kennedy Gulch. This case was resolved with CWCB by a letter agreement, dated May 23, 2023, by which CWCB agreed not to file a Statement of Opposition, provided Applicant incorporates the following terms and conditions into any draft and final decrees and Applicant agrees to not oppose a motion to intervene by CWCB if such terms and conditions are not included.

"The CWCB holds an instream flow water right on Kennedy Gulch for 1 cfs year-round, as decreed in Case No. 86CW298. In the event that there is a call within the exchange project reach which is senior to the Water Exchange Project, to the extent required to prevent injury to such calling water, the Applicants shall: (1) have replacement water delivered via trucking to make replacements above the calling water right; or (2) release water from an onsite container using water decreed for this purpose; and/or (3) make releases from or bypass out-of-priority storage in Vesper's Pond No. 1, allowing the pond level to drop commensurate with evaporation. The exchange project rights will operate to replace depletions to the flow of water in the stream system as the depletions occur. Replacements shall not be aggregated to replace any out-of-priority diversions occurring during an instream flow water right call. If depletions are replaced by drawdown from Vesper's Pond No. 1 during a call by the CWCB on Kennedy Gulch in lieu of replacements from the MMRC replacement supplies identified in paragraph \_\_, Applicant may later use said MMRC supplies to refill Vesper's Pond No. 1, whether by exchange or trucking, so long as the mechanism of said refill does not result in additional out-of-priority depletions to the instream flow at times when the instream flow is not fully satisfied. The water exchange project

right will be operated and administered with a priority date of February 28, 2023, at a maximum flow rate of 0.01 cfs.”

**(2) Case No. 23CW0002 (Water Division 7) - Application of Jacob Harter**

During the March 2023 Water Court Resume Review, CWCB staff identified concerns regarding potential injury to CWCB’s instream flow water rights decreed in Case No. W-1763 (1977) on the Florida River. This case was resolved with CWCB by a letter agreement, dated May 15, 2023, by which CWCB agreed not to file a Statement of Opposition, provided Applicant incorporates the following terms and conditions into any draft and final decrees and Applicant agrees to not oppose a motion to intervene by CWCB if such terms and conditions are not included.

"... the amended application is a full replacement for the original application. Given the amended application is a full replacement for the original application, I no longer wish for the Court to confirm use of the Harris-Patterson water as presented in paragraph 7 of the original application and would no longer request "that a court decree this water right as an alternate point of diversion for Applicant's Project Water currently delivered through the Harris-Patterson Ditch," as presented in Paragraph 9 of the original application."





**COLORADO**

**Colorado Water  
Conservation Board**

Department of Natural Resources

1313 Sherman Street  
Denver, CO 80203

P (303) 866-3441  
F (303) 866-4474

Jared Polis, Governor

Dan Gibbs, DNR Executive Director

Rebecca Mitchell, CWCB Director

**TO:** Colorado Water Conservation Board Members

**FROM:** Kirk Russell, P.E., Finance Section Chief

**Board Meeting:** July 19-20, 2023 Board Meeting

**Directors Report:** Water Project Loans  
Interest Rates

---

### Introduction

The CWCB establishes interest rates bi-monthly for the Water Project Loan Program (per Financial Policy #7).

The current rates for a 30-year term are as follows:

- 1.85% - Agricultural
- 2.60% - Low-income Municipal
- 3.00% - Middle-income Municipal
- 3.35% - High-income Municipal
- 6.00% - Commercial
- 2.00% - Hydroelectric

The standard loan term is 30 years. Rates are reduced by 0.25% for 20-year loans, and by 0.75% for 10-year loans. Rates are increased by 0.25% for 40-year loans.

The rates can also be found on the CWCB web site under the “Loans and Grants” tab. These rates will be applicable for loans presented at this Board meeting.





**COLORADO**

**Colorado Water  
Conservation Board**

Department of Natural Resources

1313 Sherman Street, Room 718  
Denver, CO 80203

P (303) 866-3441  
F (303) 866-4474

Jared Polis, Governor

Dan Gibbs, DNR Executive Director

Lauren Ris, Acting CWCB Director

**TO:** Colorado Water Conservation Board Members

**FROM:** Matthew Stearns, P.E., Project Development

**DATE:** July 19-20, 2023 Board Meeting

**DIRECTORS REPORT:** Water Project Loan Program  
Prequalified Project List and Loan Prospect Summary

---

The Finance Section compiles a list of prequalified projects for the Water Project Loan Program. In order to be included on this list, potential borrowers must submit a Loan Application and three years of financial statements to the CWCB staff. In addition, Borrowers requesting to be placed on the Prequalification Project List have a defined project, have performed preliminary engineering, and have a reasonable estimate of the project costs.

Projects on this list fit the initial criteria of the Water Project Loan Program; however, the list does not constitute loan approval. In order to receive a loan, borrowers must additionally submit a completed Loan Feasibility Study for review by CWCB staff. Staff will then prepare a recommendation to the Board for approval at a future CWCB meeting. Projects will remain on this list for one year from the date of the application or until Board approval of a loan.



## Prequalified Project List

BORROWER	PROJECT NAME	APPLICATION DATE	BASIN	PROJECT DESCRIPTION	PROJECT COST/LOAN AMOUNT
Previously Approved Applications					
Northern Colorado Water Conservancy District	Northern Integrated Supply Project	May 1, 2023	South Platte	The District is constructing two new reservoirs (Glade and Galetton), a forebay reservoir, pump plants, delivery pipelines and canal improvements on behalf of the Project's 15 Northern Front Range water providers. This infrastructure will provide participants with 40,000 AF of new water supplies annually.	\$100,000,000
Sustainable Water Augmentation Group, Inc.	Water Rights Purchase	July 1, 2022	Rio Grande	The Corporation is purchasing two irrigated farm/ranch properties where 39 center pivot irrigation circles will be retired, and surface water rights will be used to replace stream depletions to the Rio Grande caused by groundwater withdrawals of member wells.	\$39,200,000
Total					\$39,200,000



The Finance Section also compiles a list of potential borrowers/projects for the Water Project Loan Program. This list represents borrowers that have contacted the CWCB about a potential need for funding but have not submitted a loan application and loan feasibility study. Projects are also identified if they have a Health/Safety (\*), Economic Impact (†), or Federal Match (‡) component.

BORROWER	PROJECT NAME	POTENTIAL LOAN AMOUNT
<b>South Platte</b>		
NISP Participants	NISP	\$750,000,000
Woods Lake Mutual Ditch Company	Culvert Replacement	\$150,000
Town of Kersey	Water Line Project	TBD
Riverside Reservoir and Land Company	Ditch Rehabilitation	\$250,000
Town of Bennett	Raw Water Tank	\$500,000
Evergreen Metro District	Evergreen Dam Enlargement	TBD
Left Hand Water District	Dry Creek Reservoir	TBD
Shawnee Water Consumers Association	Reservoir Rehabilitation	\$200,000
Boulder and White Rock Ditch & Res. Co.	Reservoir Dredging	TBD
Western Mutual Ditch Company	Reservoir Dredging	TBD
Bergen Ditch and Reservoir Company (*)	Reservoir Rehabilitation	TBD
Louviers Water and Sanitation District	Regional Connection	TBD
City of Fort Collins	Irrigation Ditch Piping	\$20,000,000
City of Fort Collins	Halligan Reservoir Enlargement	\$120,000,000
Northern Colorado WCD	Windy Gap FIRMing (increase)	\$54,000,000
SPROWG Participants	SPROWG	\$1,800,000,000
City of Milliken (*)	Hillsboro Dam Rehabilitation	\$15,000,000
Colorado Parks and Wildlife (*)	Tarryall Dam Rehabilitation	\$5,000,000
Standley Lake Operating Committee	Reservoir Expansion	TBD
Switzerland Park HOA	Reservoir Rehabilitation	\$300,000
Danna Ortiz	Knouth Reservoir Rehabilitation	\$3,000,000
Loup Reservoir Company	Loup Reservoir Rehabilitation	TBD
Arthur Irrigation Company	Ditch Rehabilitation	TBD
Handy Ditch Company	Welch Reservoir Rehabilitation	\$1,000,000
Glacier Lake Property Owners	Glacier Lake Outlet Rehabilitation	TBD
Central, City of	Raw Water Pipeline	TBD
Denver, City of	Floodplain Improvement	TBD
Consolidated Mutual Water Company (*)	Reservoir Rehabilitation	TBD
Wadley Farms 3 HOA	Reservoir Rehabilitation	TBD
Loveland Lake and Ditch Company	Reservoir Rehabilitation	TBD
Inverness	Reservoir Improvements	TBD
Cottonwood	Reservoir Improvements	TBD
Arapahoe County W/WW Authority	Reservoir Improvements	TBD
<b>Subtotal</b>		<b>\$2,769,400,000</b>



BORROWER	PROJECT NAME	POTENTIAL LOAN AMOUNT
<b>Arkansas</b>		
Town of Manitou Springs	Raw Water Pipeline	\$3,000,000
City of Woodland Park	Storage Project	\$1,000,000
Fort Lyon Canal Company	Adobe Creek Enlargement	\$8,000,000
Deweese Ditch and Reservoir Co. (+)	Reservoir Enlargement	TBD
Holbrook Ditch Company	Reservoir Enlargement	TBD
Lake County	New Reservoir	TBD
Catlin Canal Company	Canal System Improvement	\$1,500,000
Lower Arkansas WCD	New Storage Account	TBD
Donala Water and Sanitation District	Ditch Construction	TBD
Mesa McKenna Mutual Ditch Company	Ditch Piping Project	TBD
Town of Avondale (*)	New Well	TBD
Round Mountain Water & Sanitation	New Reservoir	TBD
Ordway, Town of	Reservoir Rehabilitation	TBD
Cross Creek Metropolitan District	Hale Reservoir Rehabilitation	\$3,000,000
Oxford Ditch Company	Flume Rehabilitation	\$1,800,000
Fort Lyons Canal Company (+)	Diversion Structure Repair	\$500,000
Aguilar, Town of (‡)	New Augmentation Reservoir	TBD
Huerfano County	Water Rights Purchase	\$1,200,000
Rocky Ford High Line Canal Company	Diversion Structure Repair	TBD
Lincoln Park Crooked Ditch Company	Ditch Rehabilitation	TBD
<b>Subtotal</b>		<b>\$20,000,000</b>
<b>San Miguel/Juan</b>		
Town of Bayfield	Ditch Piping Project	\$500,000
Redmesa Reservoir and Ditch Co. (*)	Redmesa Reservoir Enlargement	\$11,500,000
City of Cortez	Distribution System (Loss Prevention)	\$10,000,000
Webber Ditch Company (‡)	Ditch Piping Project	TBD
Pagosa Area Water and Sanitation Dist. (*)	Raw Water Pipeline Rehabilitation	TBD
Town of Naturita	Water Meters	TBD
Farmers Water Development Company	Reservoir Rehabilitation	TBD
Lone Cone Ditch and Reservoir Company	Reservoir Rehabilitation	TBD
Sellers McClane Reservoir and Ditch Co.	Reservoir Rehabilitation	TBD
<b>Subtotal</b>		<b>\$22,000,000</b>
<b>Colorado</b>		
Orchard Mesa Irrigation District	Lateral Piping	\$300,000
Silt Water Conservancy District	Harvey Gap Reservoir	\$300,000
Middle Ditch	Ditch Piping Project	TBD
New Multa Trina Ditch Company (‡)	Ditch Piping Project	TBD
Gunther Covers	Christenson Dam	TBD
Town of Minturn	New Well Field	\$5,220,000
Flannery Water Company, LLC	Reservoir Rehabilitation	TBD
Fruita, City of	Reservoir Rehabilitation	TBD
Dave Phelps	King Dam Rehabilitation	TBD
Royal Elk Ranch	Ditch Rehabilitation	\$2,000,000
Clifton Water District	New Reservoir	\$8,000,000
<b>Subtotal</b>		<b>\$15,820,000</b>



BORROWER	PROJECT NAME	POTENTIAL LOAN AMOUNT
<b>Gunnison</b>		
Duke Ditch Company	Ditch Piping Project	\$400,000
Bostwick Park Water Conservancy District	Dam Construction	TBD
Kendall Reservoir Company	Reservoir Rehabilitation	\$140,000
Orchard City Irrigation District (‡)	Fruit Growers Reservoir Rehab	\$240,000
Ouray, City of	Water Supply Pipeline	\$750,000
Grand Mesa Water Users Association	Reservoir Rehabilitation	\$600,000
Crested Butte, Town of	Dam Outlet Rehabilitation	TBD
Olathe, Town of	Water Meter Replacement	TBD
Lone Cabin Ditch Company	Ditch Rehabilitation	TBD
Otter Pond HOA	Dam Rehabilitation	\$650,000
Project 7 Water Authority	Raw Water Pipeline	TBD
<b>Subtotal</b>		<b>\$2,780,000</b>
<b>North Platte</b>		
Colorado Parks and Wildlife (*)	North Michigan Creek Reservoir	\$6,000,000
Spicer Ranches, LTD	Reservoir Rehabilitation	TBD
Walden, Town of	New Well	TBD
<b>Subtotal</b>		<b>\$6,000,000</b>
<b>Rio Grande</b>		
Manassa Land & Irrigation Co.	Ditch Rehabilitation	\$6,000,000
Baca Grande WSD	Water Rights Purchase	\$1,000,000
Sanchez Ditch and Reservoir Co.	Dam Rehabilitation	\$4,000,000
Rio Grande WCD - Subdistrict #1	Water Rights Purchase	\$5,000,000
Colorado Parks and Wildlife	Alberta Park Dam Rehabilitation	\$4,000,000
La Jara, Town of	System Rehabilitation	TBD
Crestone, Town of	Water Rights Purchase	\$200,000
San Luis Valley WCD	Water Rights Purchase	\$500,000
Rio Grande WCD	Water Rights Purchase	\$3,000,000
Costilla County Conservancy District	Water Rights Purchase	\$300,000
<b>Subtotal</b>		<b>\$24,000,000</b>
<b>Yampa</b>		
Town of Oak Creek (*)	Reservoir Rehabilitation	\$5,600,000
Rio Blanco WCD	Wolf Creek Reservoir	\$100,000,000
Bear River Reservoir Company	Stillwater #1 Dam Rehabilitation	TBD
Marc Etchart	Procter Reservoir Rehabilitation	TBD
<b>Subtotal</b>		<b>\$105,600,000</b>





# COLORADO

## Colorado Water Conservation Board

Department of Natural Resources

1313 Sherman Street  
Denver, CO 80203

P (303) 866-3441  
F (303) 866-4474

Jared Polis, Governor

Dan Gibbs, DNR Executive Director

Rebecca Mitchell, Director

**To:** Colorado Water Conservation Board Members

**From:** Kirk Russell, P.E., Finance Section Chief  
Jessica Halvorsen, Program Assistant

**Board Meeting:** July 19-20, 2023 Board Meeting

**Directors Report:** Water Project Loan Program, Design & Construction Status Report

The CWCB Loan Program has Substantially Completed (10) projects in Fiscal Year 2022/2023 as shown in the Table. There are currently (50) projects authorized to receive loan funding totaling \$349M. There are (41) projects currently under contract and in the Design/Construction phase totaling \$226M. The attached spreadsheet summarizes the status of all loans. A detailed description about each project is provided on the CWCB website under Water Project Loan Program. [cwcb.colorado.gov/loans-grants/water-project-loan-program](https://cwcb.colorado.gov/loans-grants/water-project-loan-program)

	Borrower	Project	County	Loan Amount	Complete
1	Parker Water and Sanitation District	WISE - Phase 2 Infrastructure	South Platte	\$3,418,658	8/1/22
2	Southeastern Co Water Conservancy District	Pueblo Dam Hydroelectric Project	Pueblo	\$17,392,200	1/1/23
3	Arapahoe County Water and Wastewater Authority	Chambers Reservoir Liner Rehabilitation	Arapahoe	\$4,404,000	3/1/23 (a)
4	Logan Irrigation District	Prewitt Reservoir Rehabilitation	Logan	\$1,257,750	3/1/23 (b)
5	North Sterling Irrigation District	North Sterling River Diversion Replacement	Logan	\$3,532,980	3/1/23
6	Morrisania Water Supply Company	Ditch Rehabilitation Project	Garfield	\$101,000	5/1/23
7	South Platte Ditch Company	Diversion Structure Rehabilitation	Washington	\$1,453,779	5/1/23
8	Deuel and Snyder Improvement Company	Diversion Structure Replacement	Morgan	\$638,776	5/1/23
9	Trinchera Conservancy District Groundwater Management	Alpha Hay Farms Augmentation	Conejos	\$2,251,290	6/1/23
10	Spring Dale Ditch Company	Diversion Structure Replacement	Logan	\$1,216,243	6/1/23
			Total	\$35,302,676	

Fiscal Year 2022/2023 has added and preserved 4,700 acre-feet of reservoir storage; (a) 1,400; (b); 3,300







### Project Description

Parker Water and Sanitation District (District) has subscribed to 1,200 acre-feet of water on an average annual basis through the WISE Project. The District expects in average and wet years, WISE will deliver an average yield close to 100% of Parker's water supply and the supply will originate from renewable sources. In dry years, the water delivery losses from renewable sources will be augmented with pumping non-tributary ground water from aquifer storage or from Rueter-Hess Reservoir. The WISE Project is the result of regional cooperative planning between Denver Water Aurora Water and 10 regional water providers in the south metropolitan area. The South Metro WISE Authority WISE Authority is comprised of ten governmental water providers in Douglas and Arapahoe Counties bound together by a 2013 Intergovernmental Agreement. The WISE Project will reduce dependence on non-renewable groundwater resources efforts.

The District lead construction of the 20,300 feet of new 42-inch pipe starting near the intersection of Chambers Road and E-470 and ending at the Parker Water Treatment Plant located just south of Rueter-Hess Reservoir. South from the treatment plant, a 16.5 million gallons per day pump station was constructed followed by 9,000 feet of a new 24-inch pipeline that allows WISE water to be conveyed to Rueter-Hess Reservoir for storage. Facilities are oversized for use by other WISE Authority members.

P R O J E C T   D A T A		
<i>Sponsor:</i> Parker Water and Sanitation District	<i>County:</i> Douglas and Arapahoe	<i>Water Source:</i> South Platte River
<i>Type of Project:</i> Water Supply Infrastructure	<i>Board Approval Date:</i> May 2014	
<i>Terms of Loan:</i> 2.75% for 20 years (Original) \$3,418,658.00    (Final) \$3,418,658		
<i>Design Engineer:</i> Jacobs		
<i>Contractor:</i> Glacier Construction; T. Lowell Construction; Garney Construction		





### Project Description

This Project was authorized in the 2007 and 2009 Projects Bill (SB07-122, SB09-125) to develop a revenue source to offset the operational and maintenance cost of the planned Arkansas Valley Conduit using hydropower. The 7.5 megawatt facility is located on the North Outlet of Pueblo Dam and generates electricity at flows ranging from 35-810 cubic feet per second. Three turbines and two generators use the dam's authorized releases to the Arkansas River to generate an annual average 28 million kWh (enough to power approximately 3,300 homes) and is planned to generate \$1,500,000 in average revenue per year.

The James W. Broderick Hydropower Plant power is generated by falling water flowing through turbines. No water is consumed during the generation of electricity. The hydropower plant connects to the Municipal Service Line constructed by Colorado Springs Utilities for the Southern Delivery System. The Project was performed under the U.S. Bureau of Reclamation's Lease of Power Privilege (LOPP) process. Colorado Springs Utilities purchase the power generated via transmission through the local Black Hills Energy power delivery system. Colorado Springs Utilities and the Pueblo Board of Water Works were originally partners, but the District is solely undertaking the Project.

P R O J E C T   D A T A		
<i>Sponsor:</i> Southeastern Colorado Water Conservancy District	<i>County:</i> Pueblo	<i>Water Source:</i> Arkansas River
<i>Type of Project:</i> Hydroelectric	<i>Board Approval Date:</i> July 2016	
<i>Terms of Loan:</i> 2.00% for 30 years	<i>(Original)</i> \$17,392,200	<i>(Final)</i> \$17,392,200
<i>Design Engineer:</i> Providence Infrastructure Consultants, Inc.		
<i>Contractor:</i> Mountain States Hydro, LLC		



**COLORADO**  
Colorado Water  
Conservation Board  
Department of Natural Resources

## Chambers Reservoir Liner Rehabilitation

Arapahoe County Water and Wastewater Authority  
Substantially Complete March 1, 2023

Chambers Reservoir's new liner prevents excessive leaking so that it can provide quality irrigation water



### Project Description

The Arapahoe County Water and Wastewater Authority (ACWWA) was formed in 1988 to supply potable and non-potable water service and wastewater service to approximately 10,000 residents and numerous commercial and industrial customers in southern Arapahoe County and a small portion of northern Douglas counties. Chambers Reservoir was constructed in 2010 for ACWWA, who owns and operates the reservoir for the purpose of storing alluvial aquifer well water for non-potable irrigation use within its service area.

The original reservoir design included excavation below the natural ground surface, installation of a compacted clay liner, and construction of a dam across an unnamed tributary of Happy Canyon Creek. Due to design and construction defects, the reservoir was found to leak up to a calculated 27 AF per week when the reservoir was approximately  $\frac{3}{4}$  full. The reservoir was subsequently drained in 2017 and a 500-foot long portion of the clay liner and reservoir side slope failed. The failure is thought to have occurred due to high groundwater from the leaking reservoir and insufficient clay liner thickness and material properties.

The project included raising the bottom of the reservoir, installing an underdrain system to capture and remove any groundwater that may damage the reservoir, installing a synthetic liner. Construction is expected to began in summer 2020 and was completed fall 2023.

P R O J E C T D A T A		
<i>Sponsor:</i> Arapahoe County Water and Wastewater Authority	<i>County:</i> Arapahoe	<i>Water Source:</i> Cherry Creek
<i>Type of Project:</i> Reservoir Rehabilitation	<i>Board Approval Date:</i> July 2021	
<i>Loan Terms: (Original)</i> \$2,525,000 @ 1.90% <i>(Final)</i> \$4,040,000 @ 1.90%		
<i>Design Engineer:</i> AECOM		
<i>Contractor:</i> Raven CLI Construction, Inc.		





## Prewitt Reservoir Rehabilitation

Logan Irrigation District  
Substantially Complete March 1, 2023

The newly installed concrete slabs on the dam's upstream face catch waves, diffuse their energy, and prevent overtopping of the dam crest.



### Project Description

The Logan Irrigation District (District) was formed in Logan County in 1910, and provides water for irrigation and augmentation to 125 landowners on approximately 12,800 acres. The District delivers water for well user groups such as South Platte, Pawnee, and Logan, and the City of Sterling for well pumping replacement. Irrigated acreage in the District grows corn, alfalfa, sugar beets, pinto beans, and feed crops.

The Prewitt Reservoir Dam was constructed in 1910 and measures 3.5 miles long and 36 feet high. It is owned and operated by the Prewitt Operating Committee (POC) which includes the Iliff Irrigation District, the Morgan Prewitt Reservoir Company, and the District. As the majority shareholder, the assumed financial responsibility for the loan and was responsible for collecting from other POC members. The project involved installing wave breaks and a toe drain in order to remove a State Engineer Office (SEO) Dam Safety storage restriction restoring 3,300 AF to the reservoir. Construction began in the summer of 2021, and was completed in the spring of 2023.

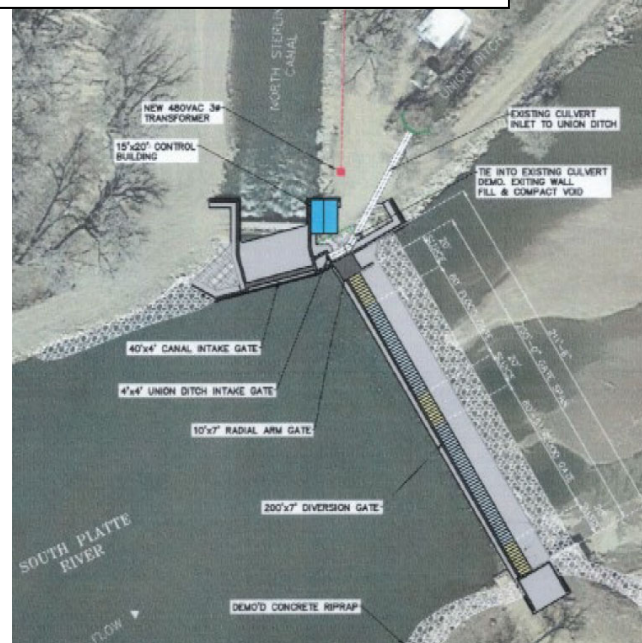
P R O J E C T   D A T A		
<i>Sponsor:</i> Logan Irrigation District	<i>County:</i> Logan	<i>Water Source:</i> South Platte River
<i>Type of Project:</i> Dam Rehabilitation		<i>Board Approval Date:</i> March 2021
<i>Loan Terms: (Original) \$1,578,630.00 (Final) \$1,257,781.27</i>		
<i>Design Engineer:</i> Harris Engineering Consultants, Inc.		
<i>Contractor:</i> Cornerstone Construction and Excavating, LLC.		



## North Sterling River Diversion Replacement

North Sterling Irrigation District  
Substantially Complete March 1, 2023

The new diversion structure is reoriented in the river to aid in sediment removal. Principal components include Obermeyer bladder gates, a new headgate structure for the Inlet Canal, a radial gate sluiceway, a control building, and a flume measurement structure.



### Project Description

The North Sterling Irrigation District (District) was created in 1907 by the Board of County Commissioners and currently serves 122 landowners with more than 40,000 acres. Irrigated land in the District's service area produces corn, alfalfa, sugar beets, pinto beans, small grains and feed crops.

The project included replacement of the existing 210 foot long diversion structure with a bladder gate, a new inlet headgate, continued service for the Union Ditch, and a new measurement structure. This allowed for safe passage of flood events, sediment, and ice flow in the winter. During intermediate flows, it also allows for fish passage while a partial pool on the upstream side will benefit aquatic habitat and waterfowl. Benefits for the District resulting from the project include improved safety for employees, and automation including remote control. Construction began in the summer of 2021 and was completed in the early spring of 2023.

P R O J E C T   D A T A		
<i>Sponsor:</i> North Sterling Irrigation District	<i>County:</i> Logan	<i>Water Source:</i> South Platte River
<i>Type of Project:</i> Diversion Replacement		<i>Board Approval Date:</i> March 2021
<i>Loan Terms: (Original) \$3,532,980 @ 0.85% (Final) \$3,532,980 @ 0.85%</i>		
<i>Design Engineer:</i> Harris Engineering Consultants, Inc.		
<i>Contractor:</i> Concrete Specialties and Utilities Construction, Inc.		





The Morrisania Water and Supply Company's ditch had a 1,350 ft segment (seen in photo below on the left) that was losing as much as 20% of flows through seepage. The Ditch Rehabilitation Project restored the headgate to reduce risk of failure and piped the 1,350 ft of ditch to reduce seepage and evaporative losses.



### Project Description

The Morrisania Water Supply Company, established in 1910, owns and operates diversion and supply infrastructure primarily for irrigation, which is supplied with water from Battlement Creek. The Company serves 65 shareholders on 880 acres.

The Ditch Rehabilitation Project focused on the aging headgate and a 1,350-foot reach of ditch which experienced notable losses due to seepage, preventing the ditch from delivering the Company's full water rights. To address these issues, the Company rehabilitated the headgate with new concrete in areas that had spalled and cracked, as well as piped the ditch with 24-in HDPE. Work took place between October 2022 and January 2023.

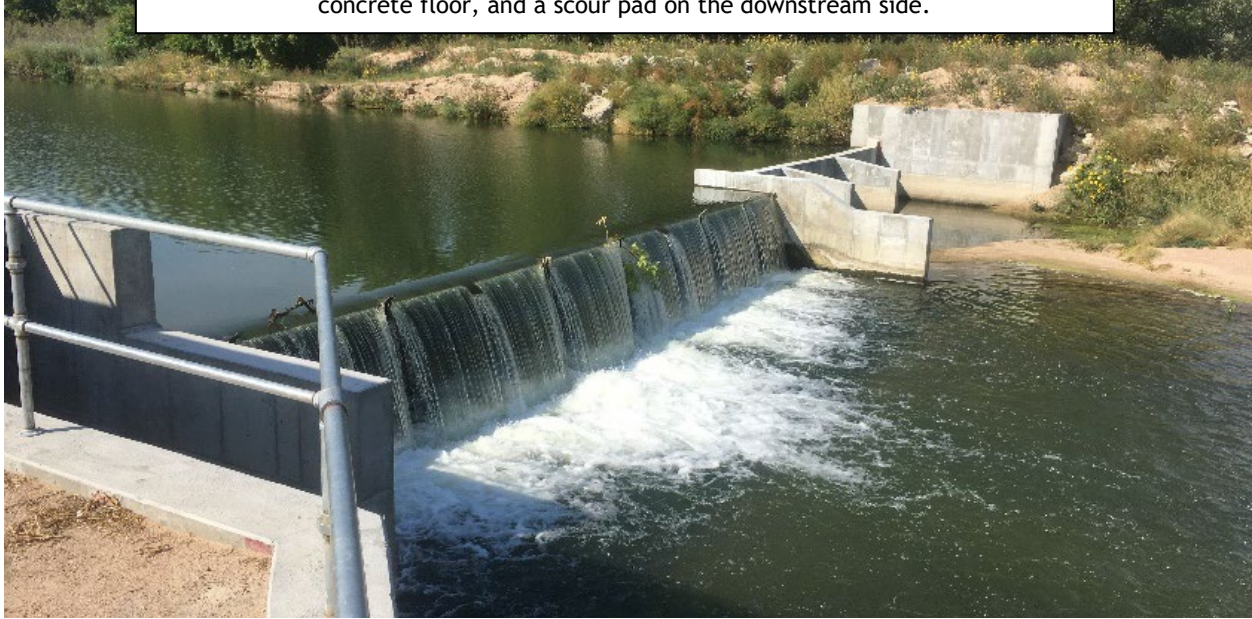
P R O J E C T D A T A		
<i>Sponsor:</i> Morrisania Water Supply Co	<i>County:</i> Garfield	<i>Water Source:</i> Battlement Creek
<i>Type of Project:</i> Ditch Rehabilitation		<i>Board Approval Date:</i> September 2022
<i>Loan Terms:</i> (Original) \$141,400.00 (Final) \$101,000.00 @ 2.45% for 20 years		
<i>Design Engineer:</i> JUB Engineering		
<i>Contractor:</i> JC Excavating		



## Diversion Structure Rehabilitation

**South Platte Ditch Company**  
Substantially Complete May 1, 2023

The rehabilitated diversion structure offers more efficient and precise control of diversions into the South Platte Ditch. It features new bladder gates, and improved concrete floor, and a scour pad on the downstream side.



### Project Description

The South Platte Ditch Company (Company) is a mutual ditch company that was incorporated in 1881. It provides direct flow irrigation water to 20 shareholders with approximately 4,440 acres in Washington and Logan counties between Atwood and Sterling. Shareholders grow primarily corn, alfalfa, beans, and sugar beets.

The original diversion structure was constructed in the early 1900s and underwent rehabilitation in 1997 to repair damage resulting from a flood in 1995. At that time, the Company decided to add a bladder gate, radial gate, and control building to improve operations. Since then, sand laden water damaged the bladder gate system, downstream concrete floor, and has eroded the downstream channel between 2 and 3 feet, with the downstream face of the structure being undermined. This project replaced the bladder gate components, overlaid the damaged structure floor, and installed a scour pad in the downstream channel floor with energy dissipation improvements. Construction began in December 2021.

P R O J E C T   D A T A		
<i>Sponsor:</i> South Platte Ditch Company	<i>County:</i> Washington	<i>Water Source:</i> South Platte River
<i>Type of Project:</i> Diversion Replacement		<i>Board Approval Date:</i> May 2021
<i>Loan Terms: (Original)</i> \$1,075,650 @ 1.10% <i>(Final)</i> \$1,453,779.19 @ 1.10%		
<i>Design Engineer:</i> Harris Engineering Consultants, Inc.		
<i>Contractor:</i> Ransom Boone Excavating		



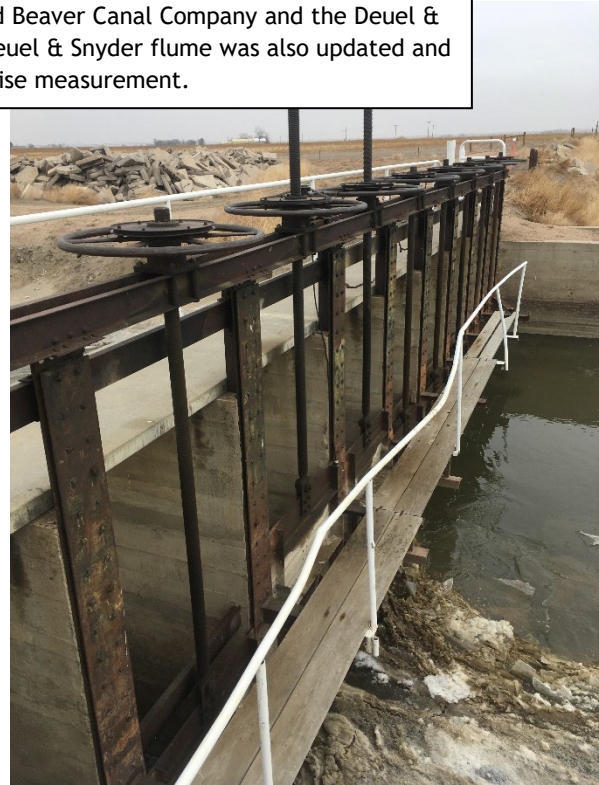


**COLORADO**  
Colorado Water  
Conservation Board  
Department of Natural Resources

## Diversion Structure Replacement

Deuel and Snyder Improvement Company  
Substantially Complete May 1, 2023

The new diversion structure spans the entire width of the river allowing for diversions into the canals of both the Upper Platte and Beaver Canal Company and the Deuel & Snyder Improvements Company (left). The Deuel & Snyder flume was also updated and allows for more precise measurement.



### Project Description

The Deuel and Snyder Improvement Company (DSIC) was incorporated in 1884 and shares a diversion off the South Platte River with the Upper Platte and Beaver Canal Company (UOBCC). Together the two ditch companies provide irrigation water on 11,500 acres.

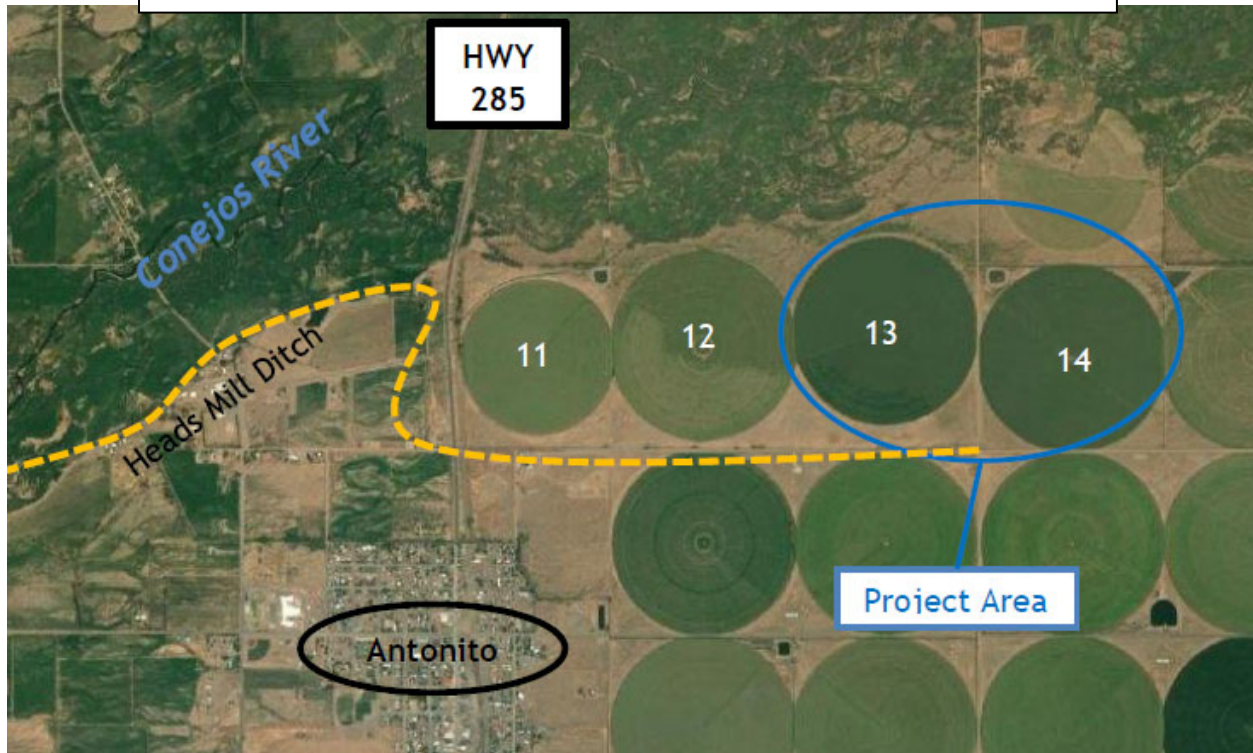
The existing diversion structure was a reinforced concrete slab and buttress with a height of 9 feet and a length of 1,416 feet. The diversion structure was originally built in 1936 and had improvements done in 1965. It had several deficiencies including seepage and erosion under the structure and concrete deterioration throughout the structure. The new structure incorporates inflatable crest gates spillways (Obermeyer gates) and restores the channel continuity, improves sediment transport, and provides additional flow conveyance during floods. This loan was for the DSIC share of the project costs for removal and replacement of the old structure.

P R O J E C T   D A T A		
<i>Sponsor:</i> Deuel and Snyder Improvement Company	<i>County:</i> Morgan	<i>Water Source:</i> South Platte River
<i>Type of Project:</i> Diversion Replacement		<i>Board Approval Date:</i> March 2020
<i>Loan Terms: (Original)</i> \$649,430.00 @ 1.60% <i>(Final)</i> \$638,776.95 @ 1.60%		
<i>Design Engineer:</i> Harris Engineering Consultants, Inc.		
<i>Contractor:</i> Ransom Boone Excavating		



**Alpha Hay Farms Augmentation**  
Groundwater Management Subdistrict  
of the Trinchera Conservancy District  
Substantially Complete June 1, 2023

The purchase of two center-pivot irrigation circles will allow the Subdistrict to transfer the associated water rights from an irrigation use to augmentation use so that 177 groundwater wells may continue to pump without injury to surface water rights holders.



### Project Description

The Groundwater Management Subdistrict of the Trinchera Water Conservancy District was formed in 2018 in order to pursue a Groundwater Management Plan as an alternative to individual augmentation plans. The Subdistrict consists of 177 wells located in the confined and unconfined aquifers in the southern San Luis Valley.

The project included the purchase of land and associated water rights for two center-pivot irrigation circles northeast of Antonito for augmentation and replacement of depletions. These surface water rights provide 569 AF of consumptive use to replace depletions on the Conejos River and the Rio Grande caused by groundwater well pumping. Previously, the water was leased to the Subdistrict from landowner, Alpha Hay Farms, LLC. The purchase was executed on April 15, 2023.

P R O J E C T   D A T A		
<i>Sponsor:</i> Groundwater Management Subdistrict of the Trinchera Conservancy District	<i>County:</i> Conejos	<i>Water Source:</i> Conejos River/Groundwater
<i>Type of Project:</i> Augmentation		<i>Board Approval Date:</i> November 2022
<i>Loan Terms: (Original)</i> \$2,251,290.00 @2.10% <i>(Final)</i> \$2,251,290.00		
<i>Design Engineer:</i> Agro Engineering Inc.		
<i>Contractor:</i> N/A		





## Diversion Structure Replacement

Spring Dale Ditch Company  
Substantially Complete June 1, 2023



### Project Description

The Spring Dale Ditch Company is a mutual ditch company and a non-profit corporation. The Company, located in Logan County, operates the Springdale Ditch for the benefit of 51 shareholders by providing direct flow irrigation water from the South Platte River to approximately 2,500 acres by means of a diversion structure on the South Platte and a headgate, located approximately 350 feet downstream of the diversion. Both structures were well maintained, but showed signs of deterioration in 2019. There were also operation concerns due to system configuration.

The project included complete removal of the existing structures and replacement with a single new structure near the preexisting structure. The new structure includes an inflatable crest gate spillway, intake structure headgate, and control building for automated control of the system. The new structure provides multiple benefits over the current system, including restoration of channel continuity, improved sediment transport along the river, improved fish passage, and a reduction in required dredging. In the course of the work, cost savings allowed the Company to include improvements to the measurement flume in addition to the original project scope.

P R O J E C T   D A T A		
<i>Sponsor:</i> Spring Dale Ditch Company	<i>County:</i> Logan	<i>Water Source:</i> South Platte River
<i>Type of Project:</i> Diversion Replacement		<i>Board Approval Date:</i> November 2019
<i>Loan Terms: (Original)</i> \$1,222,100.00 @ 1.45% <i>(Final)</i> \$1,216,243.14		
<i>Design Engineer:</i> Harris Engineering Consultants, Inc.		
<i>Contractor:</i> BTE Concrete Construction. Inc.		

PROJECT						STATUS		
Borrower	Project Name	Basin	Contract #	Amount	Manager	Design	Construction	Update
PROJECT						STATUS		
Borrower	Project Name	Basin	Contract #	Amount	Manager	Design	Construction	Update
Amity Mutual Irrigation Company	Queen Reservoir Dam Rehabilitation	Arkansas	CT2021-2224	\$1,333,000	Joshua Godwin	100%	5%	Dam breached. Final design complete and approved by Dam Safety. Bid came back higher than loan. Coming to July board meeting for increase approval.
Billings Ditch Company	Billings Ditch Implementation Project	Rio Grande	CT2022-2886	\$171,000	Cole Bedford	100%	98%	This project is being managed by the Rio Grande Headwaters Restoration Foundation to replace the Billings Ditch diversion structure. A water plan grant for the same project was contracted in October 2021. Construction is complete except for punch list items.
Breckenridge, Town of	Goose Pasture Tarn Dam Rehabilitation	Colorado	CT2023-0673	\$13,000,000	Cole Bedford	100%	75%	The project has been under construction since 2020. This loan is intended to cover the costs of the second half of the project which is starting in the fall of 2022. The first draw took place in December 2022. Construction will continue into 2024.
Dove Creek, Town of	Reservoir No. 2	Southwest	CT2022-3321	\$800,000	Cole Bedford	80%	0%	This project will support the Town of Dove creek in constructing a new storage reservoir for municipal supply. The Town also received an \$800,000 WPG for the project. Engineering is currently underway.
Duke Ditch Company	Piping the Duke Ditch	Gunnison	CT2017-0915	\$90,000	Matt Stearns	100%	0%	NRCS finalized the design in August 2018. Federal grant expired. Company is evaluating options of applying for a loan increase and completing project without federal grant dollars.
Florida Consolidated Ditch Company	Hess Lateral Improvement	Southwest	CT2019-2034	\$1,075,000	Kirk Russell	100%	0%	Company received a Water Smart Grant in Aril 2023. This \$2M will help cover the increase of construcion costs since the original bid in 2020. Company hopes to start construcion in the fall of 2023.
Florida Consolidated Ditch Company	Florida Canal Diversion Replacement	Southwest	CT2021-2890	\$721,239	Matt Stearns	100%	0%	This project is the replacement of a low head dam diversion structure with multibeneficial outcomes. Design work is complete and construction bids were accepted. The Company is looking for options to fund project shortfalls now but still expect construction to start in the Fall of 2023.
Fort Morgan Farms, LLC	Delta Water Storage Phase 1	South Platte	CT2021-2222	\$8,982,000	Cole Bedford	100%	75%	The Delta Storage Project will construct a below grade storage reservoir. The loan covers the cost of constructing a slurry wall around the reservoir to isolate future stored water from existing groundwater. The slurry wall is complete and the next phase of the construction will begin in late summer.
Fort Morgan Reservoir and Irrigation Company	Augmentation Pump Replacement Project	South Platte	CT2023-3300	\$1,753,000	Cole Bedford	100%	98%	Construction is complete on new pumps and new pump house. One final pay request is expected for final punch list items then the loan will be closed out.

PROJECT						STATUS		
Borrower	Project Name	Basin	Contract #	Amount	Manager	Design	Construction	Update
Fruitland Irrigation Company	Tunnel and Canal Renovation	Gunnison	CT2019-2848	\$1,729,000	Kirk Russell	100%	35%	Sept 2018 letter from Bureau of Reclamation recvd. Section 1 tunnel work bid pkg Dec2020. Section 2 Tribble - Pipe placement, compaction testing. Section 3&4 Rundle - begin breaking and removal of bedrock. Tribble and Wright placing concrete lining.
Genesee Water and Sanitation District	Genesee Reservoir No. 1 Enlargement	South Platte	CT2021-2851	\$5,500,000	Cole Bedford	100%	40%	The District was approved for this loan in Sep 2020 and a Water Plan Grant followed in March 2021. Bids were received in June 2021 and were well above expectations. A loan increase request was approved at the September 2022 Board meeting. Construction is now under way.
Glenwood Springs, City of	System Redundancy and Pre-Treatment Improvements	Colorado	CT2021-3104	\$8,000,000	Cole Bedford	100%	98%	This Wildfire Emergency Loan will improve the infrastructure for Glenwood Springs' water collection system to cope with increased sediment in their source waters as a result of the Grizzly Creek Fire in 2020. Construction on all portions of the project are complete. The loan will be closed out in June 2024.
Grand Junction, City of	Carson Reservoir Dam Rehabilitation	Gunnison	CT2021-3110	\$4,300,000	Joshua Godwin	100%	95%	Preliminary dam safety close out inspection complete 10/19/22. ESCO (contractor) demobilized. Grand Junction will finish construction by installing hydraulic lines for outlet gate in July 2023 when the snow melts. Then can begin filling reservoir.
Grand Junction, City of	Kannah Creek Flowline Replacement	Gunnison	CT2023-0568	\$3,200,000	Joshua Godwin	90%	0%	Contractor selected. NTP expected Aug and construction soon thereafter.
Grand Junction, City of	Purdy Mesa Flowline Replacement	Gunnison	CT2021-2857	\$7,000,000	Joshua Godwin	70%	0%	Construction will be split between Grand Junction's team for the more moderate section and the contractor for the other portions. RFP expected to be sent out in Sept. May redesign to avoid need for tank.
Grand View Irrigation Company	Siphon Repair Project	Arkansas	CT2023-2058	\$350,000	Joshua Godwin	100%	95%	Project is nearly complete with minor project close-out items remaining.
Groundwater Management Subdistrict of CCWCD	Hokestra Reservoir Purchase	South Platte	CT2020-2248	\$5,390,500	Cole Bedford	100%	75%	This Project will purchase an existing reservoir for use as augmentation storage. Funds have been disbursed for the reservoir purchase, but construction is ongoing.
Groundwater Management Subdistrict of CCWCD	Pioneer Reservoir	South Platte	CT2019-3687	\$8,611,000	Cole Bedford	75%	75%	This is a gravel pit retrofit for augmentation water supply. Funds for the initial reservoir purchase and some engineering were disbursed in May 2019. Construction efforts began in Fall 2022.
Hidden Valley Water District	Master Water Meter Connection	South Platte	CT2020-2244	\$1,720,000	Kirk Russell	100%	95%	Assets and operations are all to the District. District signed and approved EMD IGA. Precon Dec2019. Construction begin Feb 2020. EMD connect 7/2020. Construction complete, final walkthru Aug2020. Working on IGA with EMD. Continued water court proceedings by EMD.

PROJECT						STATUS		
Borrower	Project Name	Basin	Contract #	Amount	Manager	Design	Construction	Update
Lookout Mountain Water District	Upper and Lower Beaver Brook Dam Rehabilitation	South Platte	CT2021-3115	\$3,500,000	Joshua Godwin	100%	95%	Administrative work to finalize project. Construction is complete. Not expecting to request any additional disbursements.
North Poudre Irrigation Company	Park Creek Expansion Project	South Platte	CT2023-2593	\$6,480,000	Cole Bedford	60%	5%	Project is currently in the design phase for a dam height increase which will increase reservoir storage space. Some clearing took place over the winter as well as stockpiling material.
Ogilvy Irrigating and Land Company	Seely Reservoir Dredging	South Platte	CT2019-2099	\$2,252,000	Joshua Godwin	85%	0%	OILC is obtaining county permits to cross county road with haul trucks. They plan to construct in the fall/winter 2023.
Orphan Wells of Wiggins	Kiowa Creek Dam Rehabilitation	South Platte	CT2021-3116	\$373,000	Cole Bedford	100%	85%	This project will repair five non-jurisdictional dams operated by Orphan Wells of Wiggins for augmentation purposes. Mobilization took place in January 2021. Dam work complete Spring 2021. Loan increase request (May 2021) for well power supply conversion.
Redmesa Reservoir and Ditch Company	Redmesa Reservoir Rehabilitation Engineering	Southwest	CT2022-0498	\$183,000	Matt Stearns	60%	0%	This project is to engineer a financially feasible dam rehabilitation, including a potential enlargement. Work began on March 8, 2021. The Company has secured a local governmental sponsor and has been approved to proceed in the NRCS PL-566 program which will cover 100% of design and 75% of construction.
Rio Grande Water Conservation District Subdistrict No. 5	Saguache Pipeline	Rio Grande	CT2021-3846	\$6,020,000	Cole Bedford	100%	20%	Working on well owner agreement and Project easement agreements. Loan increase request in January 2023. Bidding is complete and work is underway.
Root and Ratliff Ditch Company	Ditch Piping and Rehabilitation	Southwest	CT2022-2976	\$300,000	Kirk Russell	100%	99%	Project is nearly complete. All pipe is in place. Final grading and seeding is done. SC expected in summer 2023
Smith and Emmons Ditch Company	Diversion Structures Replacement Project	South Platte	CT2023-2473	\$410,000	Cole Bedford	100%	10%	Contractor has been selected and preliminary materials purchased. Construction will take place after the 2023 irrigation season.
Special Improvement District No. 3 of the RGWCD	Alpha Hay Farms Augmentation	Rio Grande	CT2023-2843	\$2,555,000	Cole Bedford	100%	0%	Pay Requests for the initial land purchase was approved at the end of April. Construction work that will be ongoing into 2024.
Special Improvement District No. 4 of the Rio Grande WCD	Peachwood Farms Augmentation & Sustainability	Rio Grande	CT2023-3361	\$3,456,000	Cole Bedford	100%	50%	Contract is complete and ready to disburse funds. The first pay request for land purchase is expected in spring 2023 after which some construction work will take place.

PROJECT						STATUS		
Borrower	Project Name	Basin	Contract #	Amount	Manager	Design	Construction	Update
Sunnyside Park Ditch Company	Sunnyside Park Ditch Piping	Arkansas	CT2023-2022	\$533,430	Cole Bedford	100%	99%	This project will pipe a half-mile length of open ditch along the Arkansas River. The project was completed in fall 2022 and will be closed out in summer 2023 to set the repayment date for August 1.
Trinchera Conservancy District Groundwater Management Subdistrict	Augmentation Pipeline	Rio Grande	CT2022-3040	\$977,000	Kirk Russell	100%	99%	Project is complete. Substantial completion expected in mid 2023.
Triview Metropolitan District	Stonewall Springs Reservoir Complex	Arkansas	CT2022-3328	\$4,731,000	Kirk Russell	100%	75%	Reservoir under construction and working on pump house.
Tunnel Water Company	West Half Laramie-Poudre Tunnel Rehabilitation	North Platte/South Platte	CT2019-3706	\$17,830,000	Kirk Russell	100%	98%	Construction was completed in spring of 2022 after delays due to Cameron Peak wildfire. After the '22 irrigation season a warranty inspection found and a large portion of the tunnel lining caved in. This repair was made in the winter of 22/23.
Tunnel Water Company	Headgate Improvements (Wildfire Impact)	North Platte/South Platte	CT2021-3928	\$1,206,000	Kirk Russell	100%	99%	Power supply installation complete. Duperon gate delivery at site. Headgate installation underway. Construction complete.
Uncompahgre Valley Water Users Association	Taylor Park Hydro Powerplant Project	Gunnison	CT2023-2565	\$1,685,000	Cole Bedford	100%	0%	Preliminary materials purchase and design work is complete. A contractor has been selected.
Victor, City of	Victor Reservoir No. 2 Dam Rehabilitation	Arkansas	CT2021-3873	\$510,000	Kirk Russell	100%	0%	Construction delay until May 2024 due to supply delivery schedules. Town removed portion of outlet tower and DWR/Dam Safety issued a fill restriction.
Wiggins, Town of	Wiggins Recharge Facility at Glassey Farms	South Platte	CT2018-0892	\$2,385,000	Cole Bedford	100%	0%	The purpose of this project is to develop an augmentation water source for the Town. In August 2017 the Town purchased Glassey Farms and its associated water rights and 52% of funds were disbursed at that time. The project is back underway and an extension was granted.
Windy Gap Farming Project Water Activity Enterprise	Windy Gap Project (Chimney Hollow Reservoir)	South Platte	CT2021-2039	\$89,108,911	Cole Bedford	100%	30%	Construction contract was awarded in December and allotment contracts among project participants are being drafted. Contractor was selected in October. Project loan conditions were amended at the March Board Meeting. The project is well underway, but has not drawn on the loan yet.
Grand Valley Water Users Association	Vineyards Power Plant	Colorado	CT2022-2084	\$778,011	Matt	100%	99%	This project will replace the existing 2.75 MW hydroelectric powerplant with a new 4.5 MW facility. Contractor mobilized November of 2021, and construction completed in November 2022. The powerplant is producing power (1.8 MW) as of

PROJECT					
Borrower	Project Name	Basin	Contract #	Amount	Manager
Orchard Mesa Irrigation District	Vineyards Power Plant	Colorado	CT2022-0892	\$853,912	Stearns
Cottonwood Water and Sanitation District	WISE - Phase 2 Infrastructure	South Platte	CT2015-0105	\$1,116,000	Kirk Russell
Inverness Water and Sanitation District			CT2015-0119	\$1,413,000	
Pinery (Denver SE Water and Sanitation District)			CT2015-0086	\$1,413,130	
Cottonwood Water and Sanitation District	WISE - Denver International Airport Connection	South Platte	CT2015-0104	\$363,600	Kirk Russell
Inverness Water and Sanitation District			CT2015-0120	\$450,000	
Parker Water and Sanitation District			CT2015-0110	\$1,089,000	

STATUS		
Design	Construction	Update
100%	99%	completed in november 2022. The powerplant is producing power (1.8 MW) as of November 2022 via a temporary interconnect with Xcel Energy, and will be fully operational in May 2023 via a permanent interconnect.
100%	90%	Binney Connection Pipeline of Water Infrastructure and Supply Efficiency project will increase WISE flow capacity to 30MGD and provide infrastructure from Aurora Binney Facility to SMWSA. Pumps/Treatment-Glacier, Pipeline/Infrastructure-T.Lowell, Jacobs is Engineer. Vault excavation began 9/2020. Construction trailer onsite through project duration. Glacier complete foundation work, pump cans have been delivered and installed, pump motors have arrived at the pump manufacture, preliminary SCADA meetings begun, Glacier starting to form rebar for the flow control building, start laying pipe. Precast concrete walls for pump station complete.
80%	60%	Annual disbursement to be made on this loan through 2021.Design Status indicates percent of funds disbursed to date. WISE WDA negotiations between parties continue with the goal of having an amended Water Delivery Agreement ready to be brought to the respective Boards and Council for review and approval by April 1, 2021. Group discussion continues focused on the DIA Connection.

**TOTAL UNDER CONTRACT \$225,697,733**

**APPROVED PROJECTS, NOT CONTRACTED**

PROJECT					
Borrower	Project Name	Basin	Contract #	Amount	Manager

STATUS		
Design	Construction	Update

PROJECT						STATUS		
Borrower	Project Name	Basin	Contract #	Amount	Manager	Design	Construction	Update
Southeastern Colorado Water Conservancy District	Arkansas Valley Conduit	Arkansas	CT2023-XXXX	\$90,000,000	Kirk Russell	0%	0%	Federal Funding will control the scheduled use of these funds
Logan Irrigation District	Prewitt Reservoir Rehabilitation	South Platte	CT2023-XXXX	\$1,831,000	Cole Bedford	0%	0%	This Project is currently on hold. Related work on the Prewitt Dam was completed in the fall of 2022 and dredging work may go forward in the fall of 2023.
Keensburg, Town of	Alluvial Water Rights Extension Project	South Platte	CT2023-XXXX	\$2,100,000	Joshua Godwin	0%	0%	
Ogilvy Augmentation Company	Loloff Reservoir Acquisition	South Platte	CT2023-XXXX	\$1,129,000	Joshua Godwin	0%	0%	Greeley stock shares in treasury, JG - working on valuation of property
Platte Valley Irrigation Company	Platte Valley Reservoir No. 1	South Platte	CT2023-XXXX	\$4,500,000	Joshua Godwin	0%	0%	
Twin Lakes Reservoir and Canal Company	Grizzly Reservoir Rehabilitation	Colorado	CT2023-XXXX	\$9,833,000	Joshua Godwin	0%	0%	Construction delayed until summer of 2024
Colorado City Metropolitan District	Lake Beckwith Dam Modifications	Arkansas	CT2023-XXXX	\$3,333,000	Joshua Godwin	0%	0%	
Board of Water Works of Pueblo	Southside Diversion Dam Improvement Project	Arkansas	CT2023-XXXX	\$9,750,000	Cole Bedford	100%	0%	Construction is expected to take place in fall 2023. Design work is complete.
Crawford Clipper Ditch Company	Crawford Clipper Ditch Improvements	Gunnison	CT2023-XXXX	\$750,000	Joshua Godwin			

**NOT UNDER CONTRACT SUB \$123,226,000**

**GRAND TOTAL \$348,923,733**



**WATER PROJECT CONSTRUCTION LOAN PROGRAM  
LOAN REPAYMENT DELINQUENCY REPORT  
LOAN FINANCIAL ACTIVITY REPORT  
June 2023**

**LOAN REPAYMENT DELINQUENCY**

Loan repayments received relative to the Water Project Construction Loan Program have been reviewed for the period covering July 2022 through June 2023 to date. The effective due date of the payment is inclusive of the Board's current 60 day late policy. Hence, the date the payment was received was compared to the last day allowable prior to the payment being considered late.

Repayments due for Fiscal Year 2023 total 320. Two Rivers is currently delinquent. All other payments are current.

**LOAN FINANCIAL ACTIVITY**

Loan financial activity relative to the Water Project Construction Loan Program for Fiscal Year 2023 is summarized as follows:

Funds received relative to loans in repayment totaled \$33.5M for this year.

Funds disbursed relative to new project loans totaled \$40.9M for this year.

Net activity resulted in \$7.4M disbursed by the CWCB Construction Fund and the Severance Tax Perpetual Base Fund (STPBF) over the total received.

Further breakdown is summarized as follows:

The Construction Fund portion consists of \$17.8 in receipts and \$16.9M in disbursements for a total net activity of \$.9M received over disbursed.

The STPBF consists of \$15.6M in receipts and \$23.9M in disbursements for a total net activity of \$8.3M disbursed over received.

**CONSTRUCTION FUND**

Period	Principal	Interest	Total Received	Disbursements	Net Activity
July 2022	\$ 371,761	\$ 209,467	\$ 581,228	\$ -	\$ 581,228
August 2022	\$ 322,747	\$ 234,519	\$ 557,266	\$ 55,449	\$ 501,818
September 2022	\$ 1,102,786	\$ 1,283,585	\$ 2,386,371	\$ 50,148	\$ 2,336,223
October 2022	\$ 1,708,676	\$ 192,893	\$ 1,901,568	\$ 410,596	\$ 1,490,973
November 2022	\$ -	\$ -	\$ -	\$ 286,904	\$ (286,904)
December 2022	\$ -	\$ -	\$ -	\$ 1,248,405	\$ (1,248,405)
January 2023	\$ 2,452,493	\$ 1,544,067	\$ 3,996,560	\$ 2,201,187	\$ 1,795,373
February 2023	\$ 2,196,321	\$ 1,127,816	\$ 3,324,137	\$ 4,964,576	\$ (1,640,440)
March 2023	\$ 924,130	\$ 627,709	\$ 1,551,839	\$ 2,535,352	\$ (983,513)
April 2023	\$ 865,923	\$ 317,743	\$ 1,183,666	\$ 3,134,787	\$ (1,951,121)
May 2023	\$ 273,198	\$ 285,647	\$ 558,844	\$ 1,547,708	\$ (988,864)
June 2023	\$ 1,258,550	\$ 544,016	\$ 1,802,566	\$ 497,927	\$ 1,304,638
<b>FY 2023 Totals</b>	<b>\$ 11,476,583</b>	<b>\$ 6,367,462</b>	<b>\$ 17,844,045</b>	<b>\$ 16,933,038</b>	<b>\$ 911,006</b>

**SEVERANCE TAX TRUST FUND PERPETUAL BASE ACCOUNT**

Period	Principal	Interest	Total Received	Disbursements	Net Activity
July 2022	\$ 90,797	\$ 34,336	\$ 125,134	\$ -	\$ 125,134
August 2022	\$ 3,870,987	\$ 1,026,365	\$ 4,897,353	\$ 333,891	\$ 4,563,462
September 2022	\$ 619,776	\$ 725,418	\$ 1,345,194	\$ 157,189	\$ 1,188,005
October 2022	\$ 502,400	\$ 410,987	\$ 913,387	\$ 426,931	\$ 486,456
November 2022	\$ -	\$ -	\$ -	\$ 1,213,033	\$ (1,213,033)
December 2022	\$ -	\$ -	\$ -	\$ 456,812	\$ (456,812)
January 2023	\$ 1,322,568	\$ 1,621,703	\$ 2,944,271	\$ 2,826,788	\$ 117,483
February 2023	\$ 1,286,856	\$ 926,218	\$ 2,213,074	\$ 1,769,605	\$ 443,469
March 2023	\$ 173,775	\$ 252,995	\$ 426,770	\$ 6,378,876	\$ (5,952,106)
April 2023	\$ 485,186	\$ 217,422	\$ 702,608	\$ 7,613,138	\$ (6,910,530)
May 2023	\$ 768,533	\$ 451,772	\$ 1,220,305	\$ 1,254,653	\$ (34,348)
June 2023	\$ 640,729	\$ 186,086	\$ 826,815	\$ 1,497,642	\$ (670,827)
<b>FY 2023 Totals</b>	<b>\$ 9,761,607</b>	<b>\$ 5,853,302</b>	<b>\$ 15,614,908</b>	<b>\$ 23,928,557</b>	<b>\$ (8,313,649)</b>

<b>GRAND TOTAL</b>	<b>\$ 21,238,190</b>	<b>\$ 12,220,763</b>	<b>\$ 33,458,953</b>	<b>\$ 40,861,595</b>	<b>\$ (7,402,642)</b>
--------------------	----------------------	----------------------	----------------------	----------------------	-----------------------

\* no data in November and December due to position vacancy and deposits recorded in January and February