

A brown trout with dark spots is swimming over a rocky riverbed. The water is clear, and the rocks are brown and textured. The text is overlaid on the upper half of the image.

CPW's Upcoming Instream Flow Efforts

2023 Instream Flow Workshop

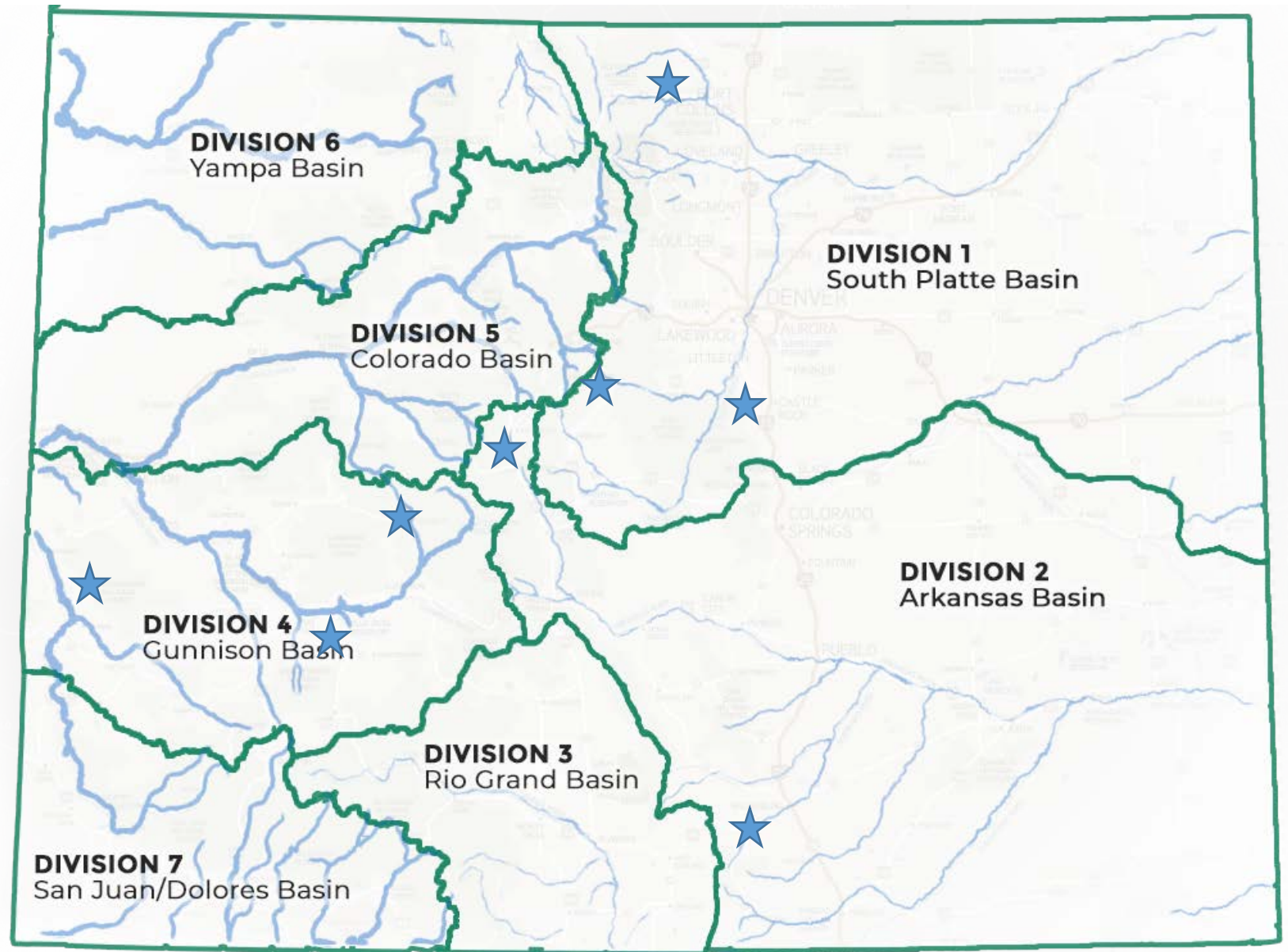
Katie Birch

Instream Flow Program Specialist
Colorado Parks and Wildlife

❖ Focus on high conservation value fish populations

❖ Leveraging local knowledge

❖ Continue to work with interested partners (Larimer County, NPS, USFS, BLM)



LIVE LIFE
OUTSIDE

Continuation of Past Efforts

Division 1 - Square Tops Creek



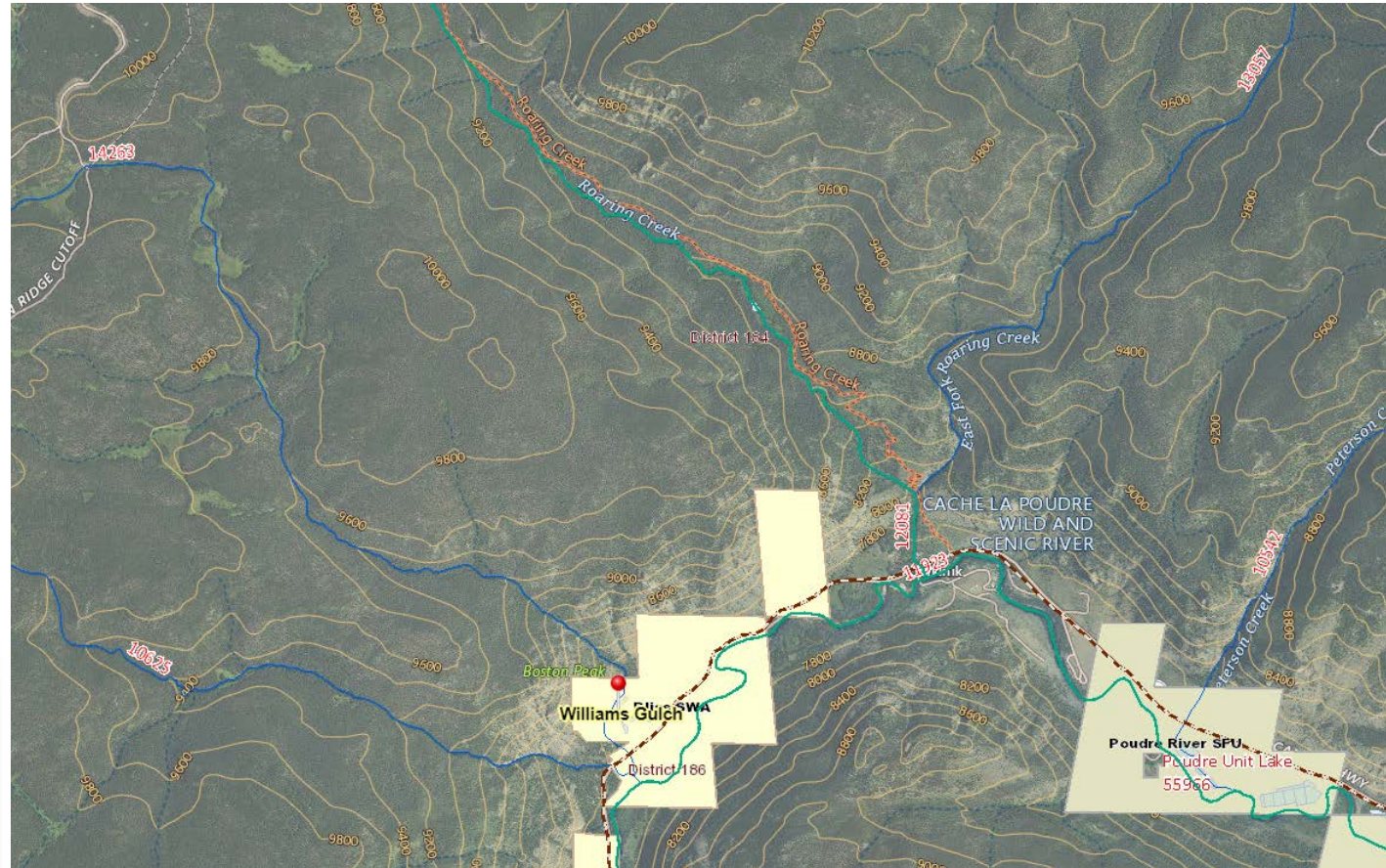
Preliminary R2Cross results

- High flow period = 1.2 cfs
- Baseflow period = 0.75 cfs



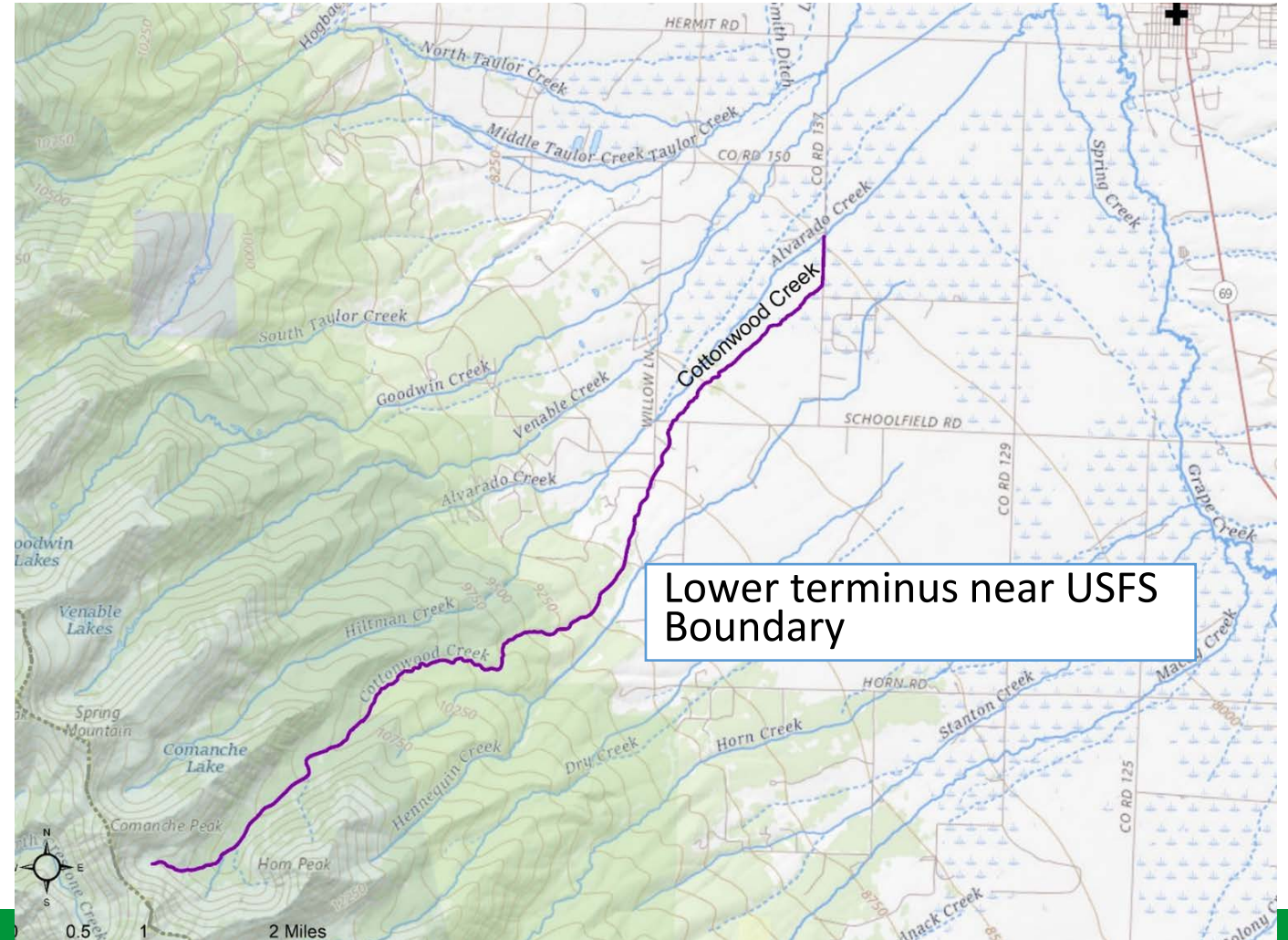
New Efforts

Division 1 - Williams Gulch & East Fork Roaring Creek



Continuation of Past Efforts

Division 2 - Cottonwood Creek



New Efforts

Division 2 - Titan Lake

First successful boreal toad introduction project in the Arkansas Basin



Boreal toad (state endangered)



LIVE LIFE
OUTSIDE

Continuation of Past Efforts

Division 4 – Pine Creek

In Partnership with BLM and NPS staff:

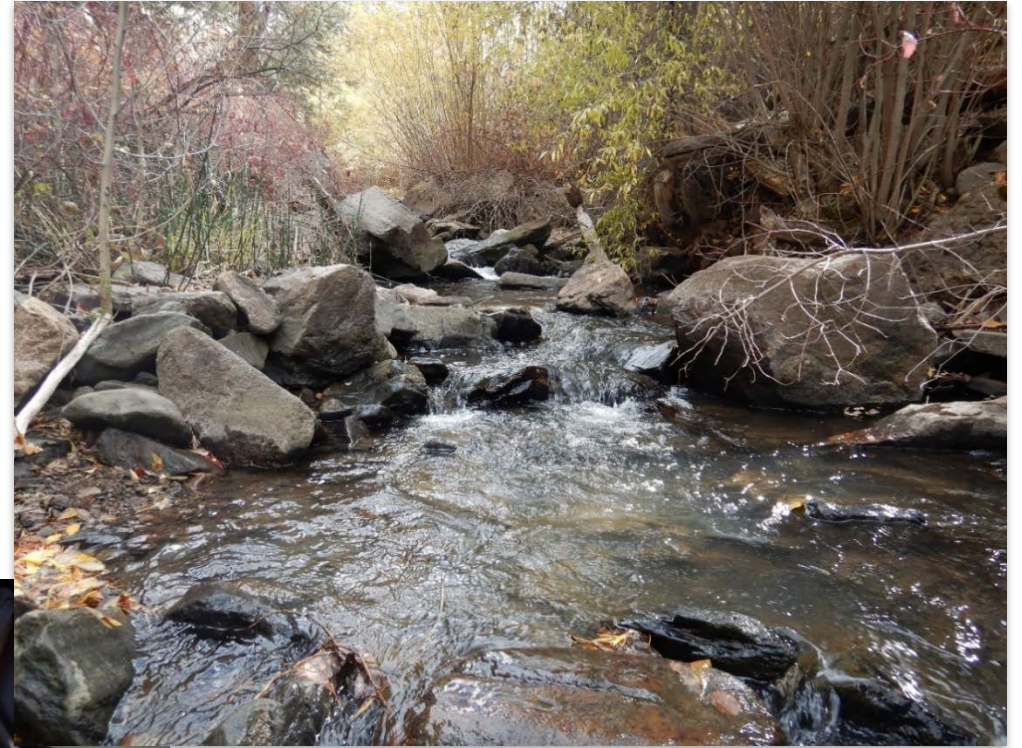
- Fish Survey
- Reconn on Segmenting (Poison Gulch or Sheep Creek)

Preliminary R2Cross (Upper)

- Baseflow period = 0.6 cfs
- High flow period = 1.2 cfs

Preliminary R2Cross Results (Lower)

- Baseflow period = 0.7 cfs
- High flow period = 8.1 cfs



Continuation of Past Efforts

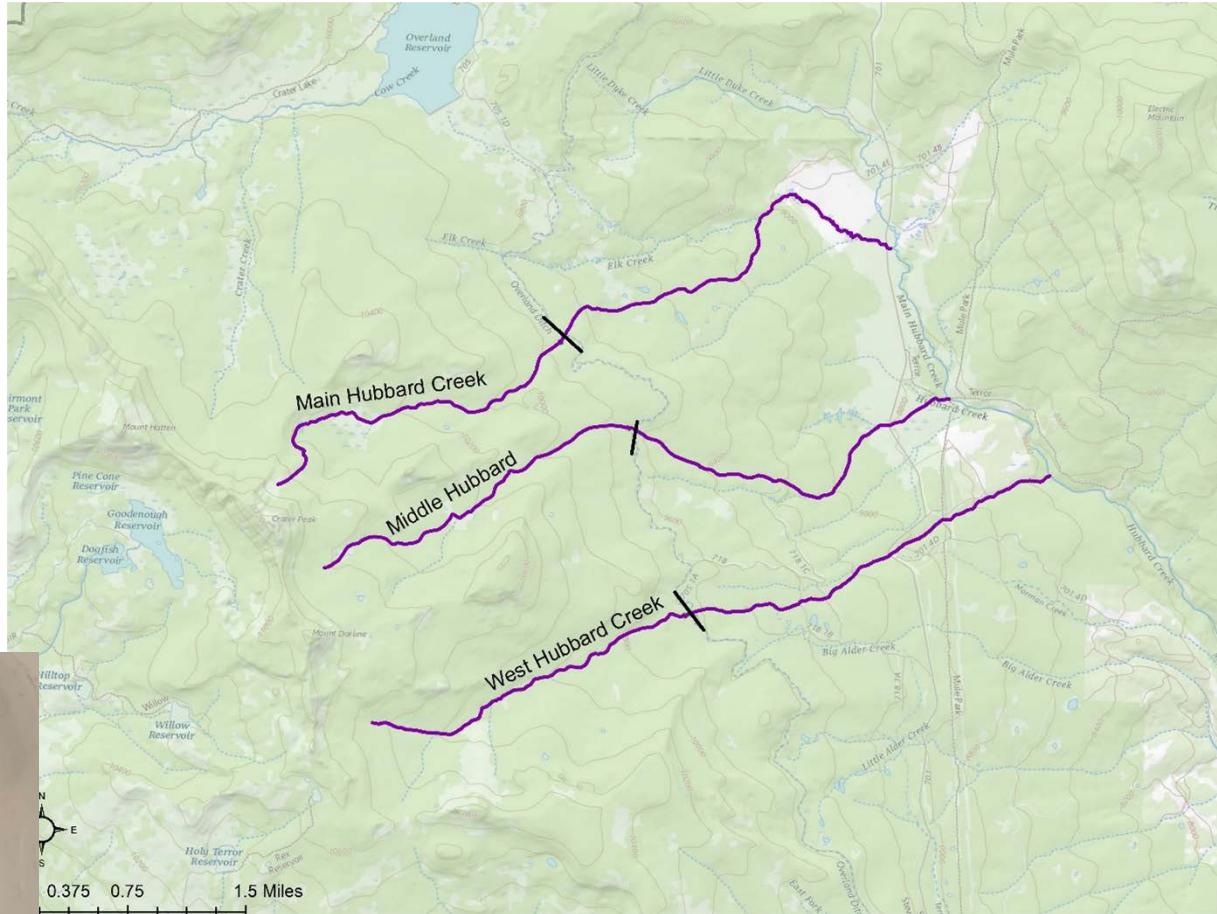
Division 4 - Colorado River Cutthroat Trout (Gunnison Basin)

Uncompahgre Plateau

- East Fork Dry Creek
- Unnamed Trib to East Fork Dry Creek
- Beaver Dams Creek

North Fork of the Gunnison

- West Hubbard, Middle Hubbard, and Main Hubbard Creeks



East Fork Dry Creek Basin - R2Cross Results

Preliminary R2Cross Results

Unnamed Trib. to EF Dry

- Baseflow period = 1.2 cfs
- High flow period = 2.5 cfs

EF Dry Creek

- Baseflow period = 1.2 cfs
- High flow period = 2.5 cfs

Beaver Dams Creek

- Baseflow period = 0.6 cfs
- High flow period = 3.5 cfs





Questions/Concerns/Comments?

970-252-6021

Katie.birch@state.co.us



LIVE LIFE
OUTSIDE