



United States Department of Agriculture

Colorado Snow Surveys

Water Availability Task Force Meeting

November 15th, 2022

NRCS Snow Survey and Water Supply Forecasting Program

Joel Atwood

Hydrologist

joel.atwood@usda.gov

720-766-4632

<http://www.nrcs.usda.gov/wps/portal/nrcs/main/co/snow/>



United States Department of Agriculture

Colorado Snow Surveys

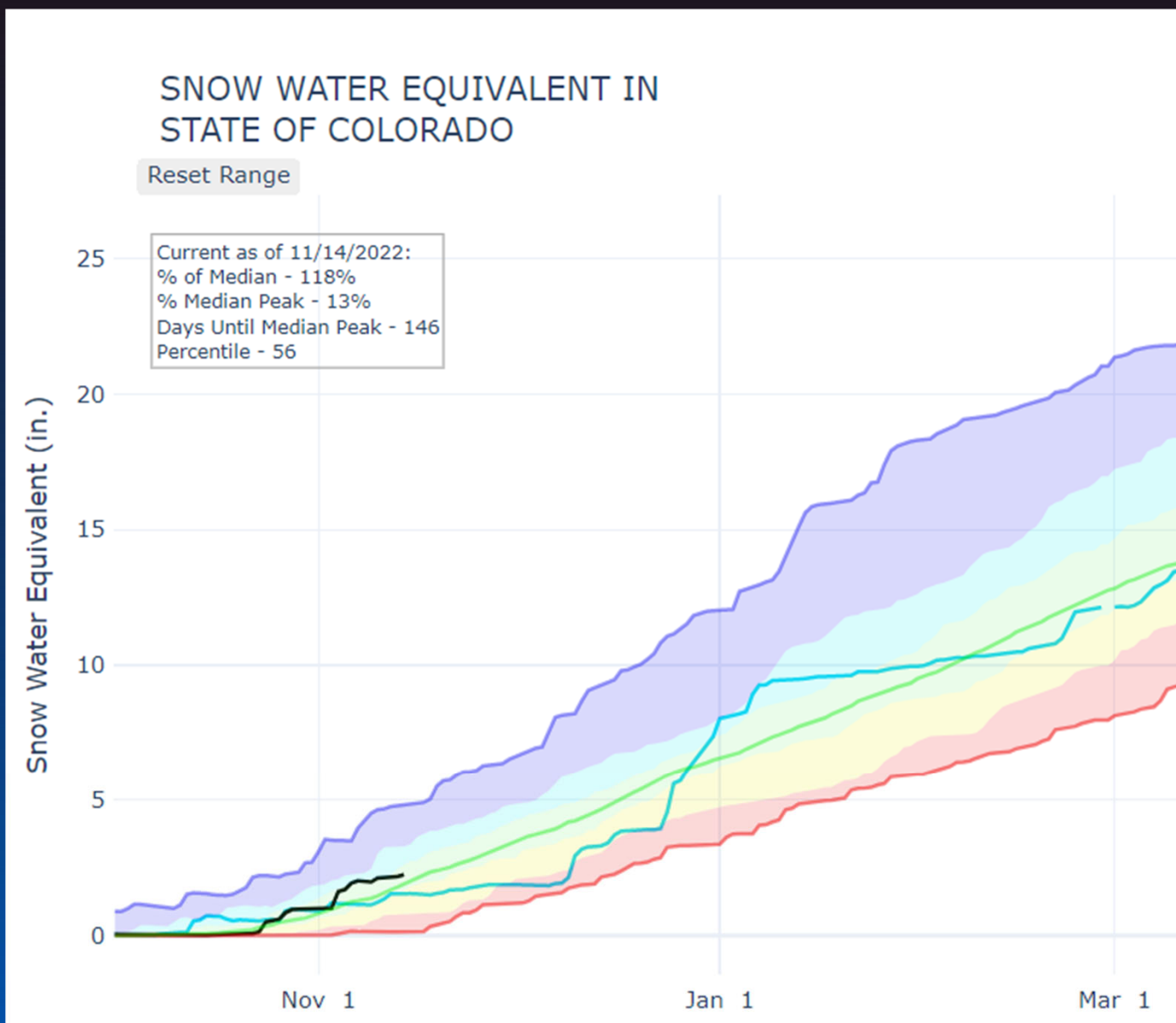
Snowpack





United States Department of Agriculture

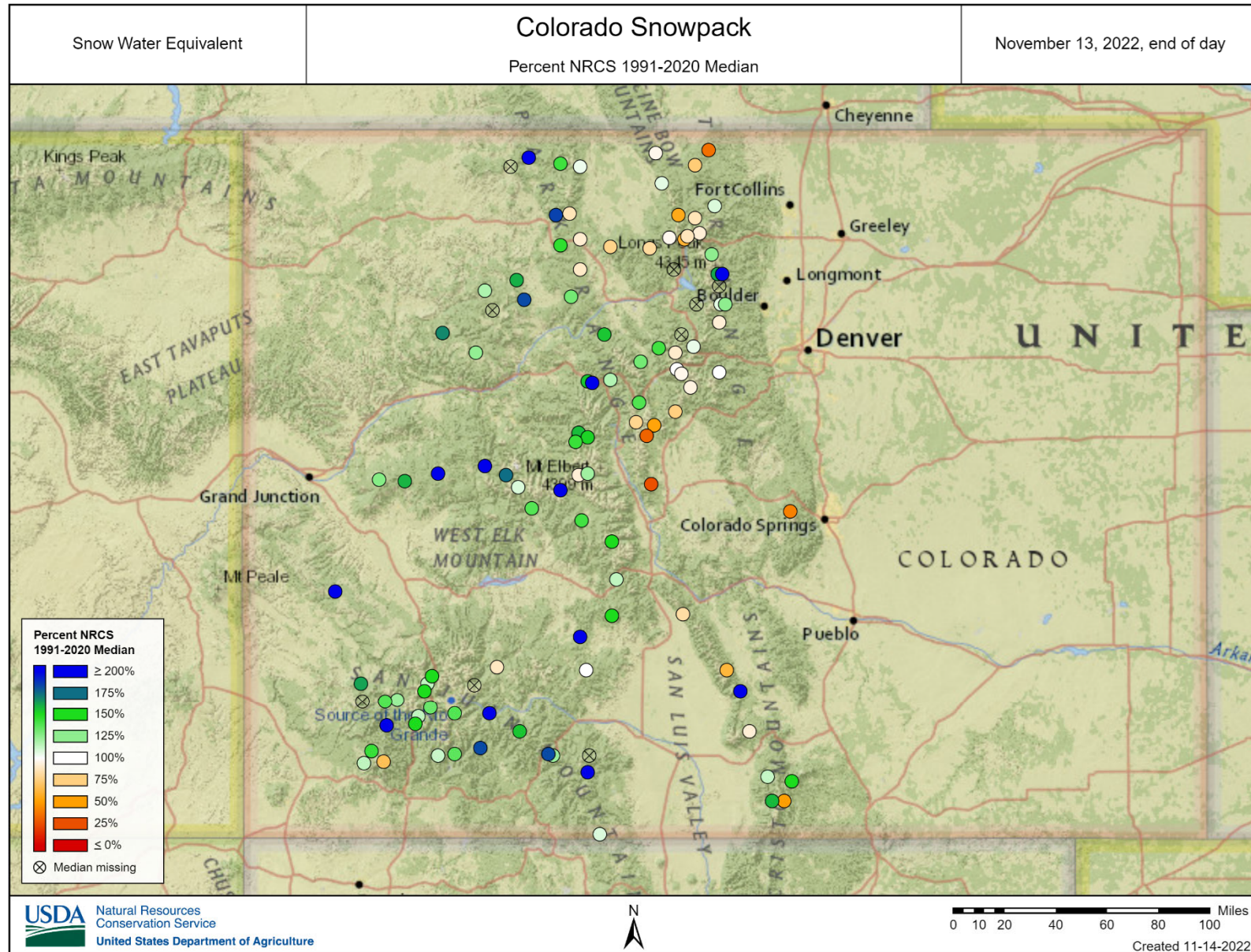
Colorado Snow Surveys





United States Department of Agriculture

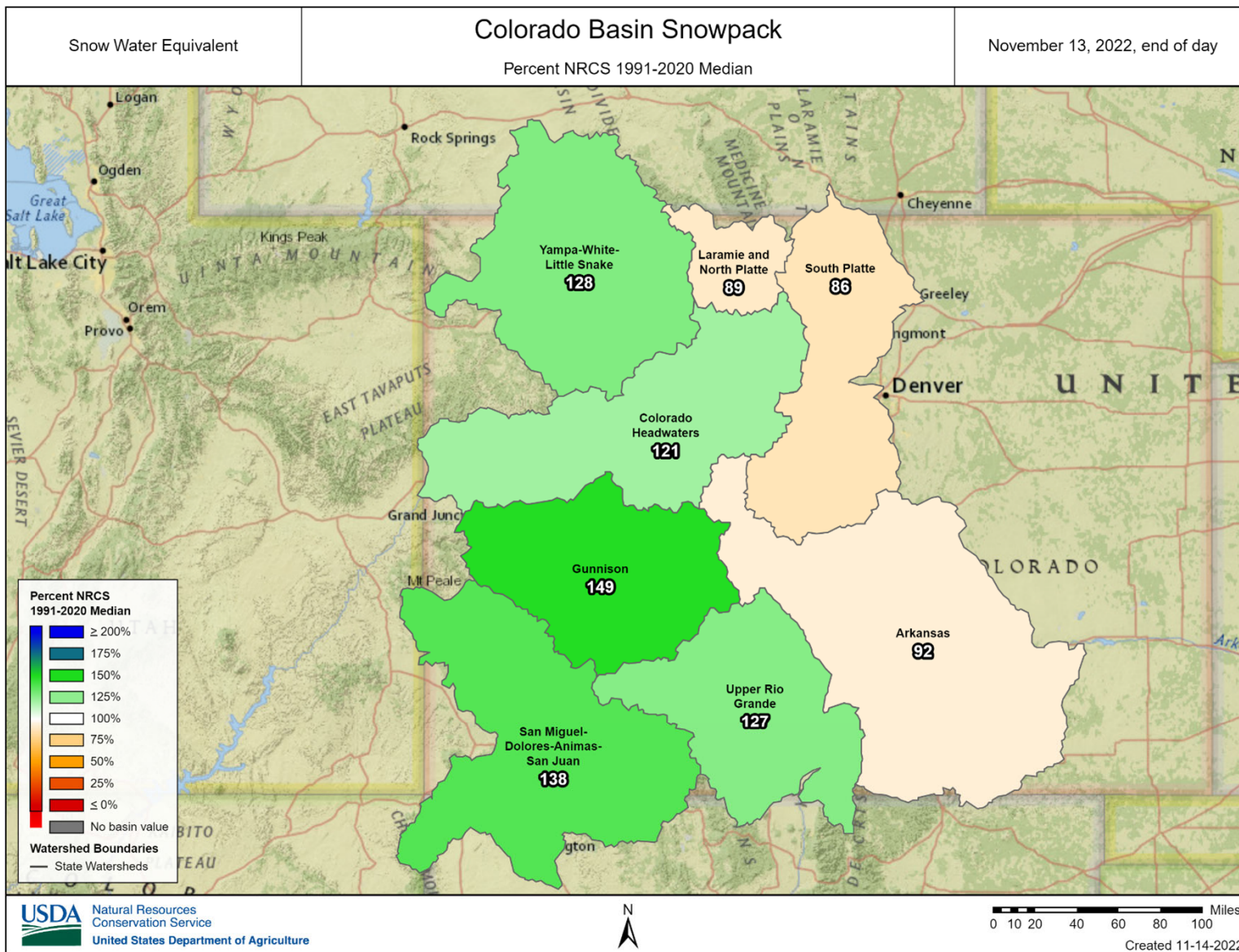
Colorado Snow Surveys





United States Department of Agriculture

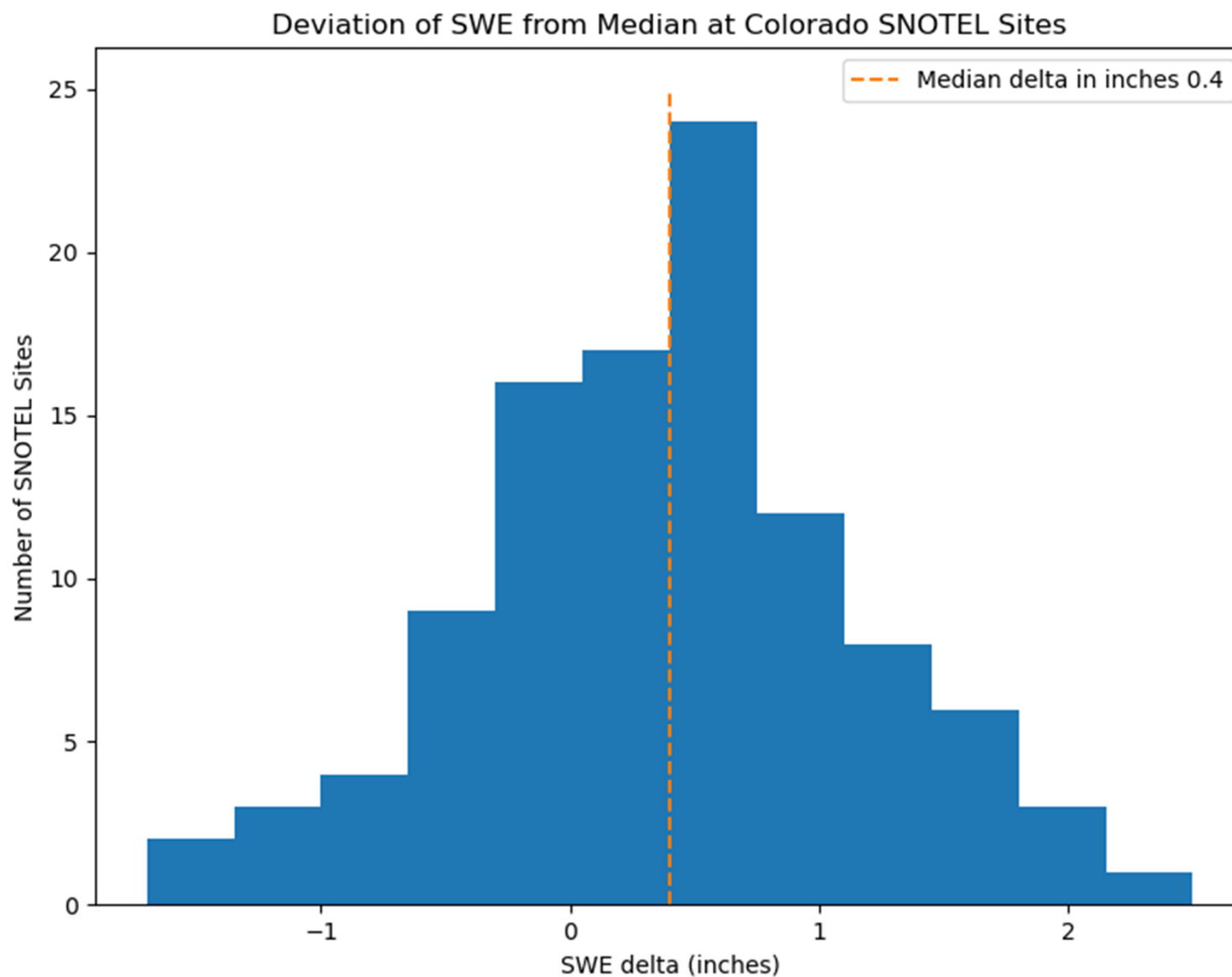
Colorado Snow Surveys





United States Department of Agriculture

Colorado Snow Surveys

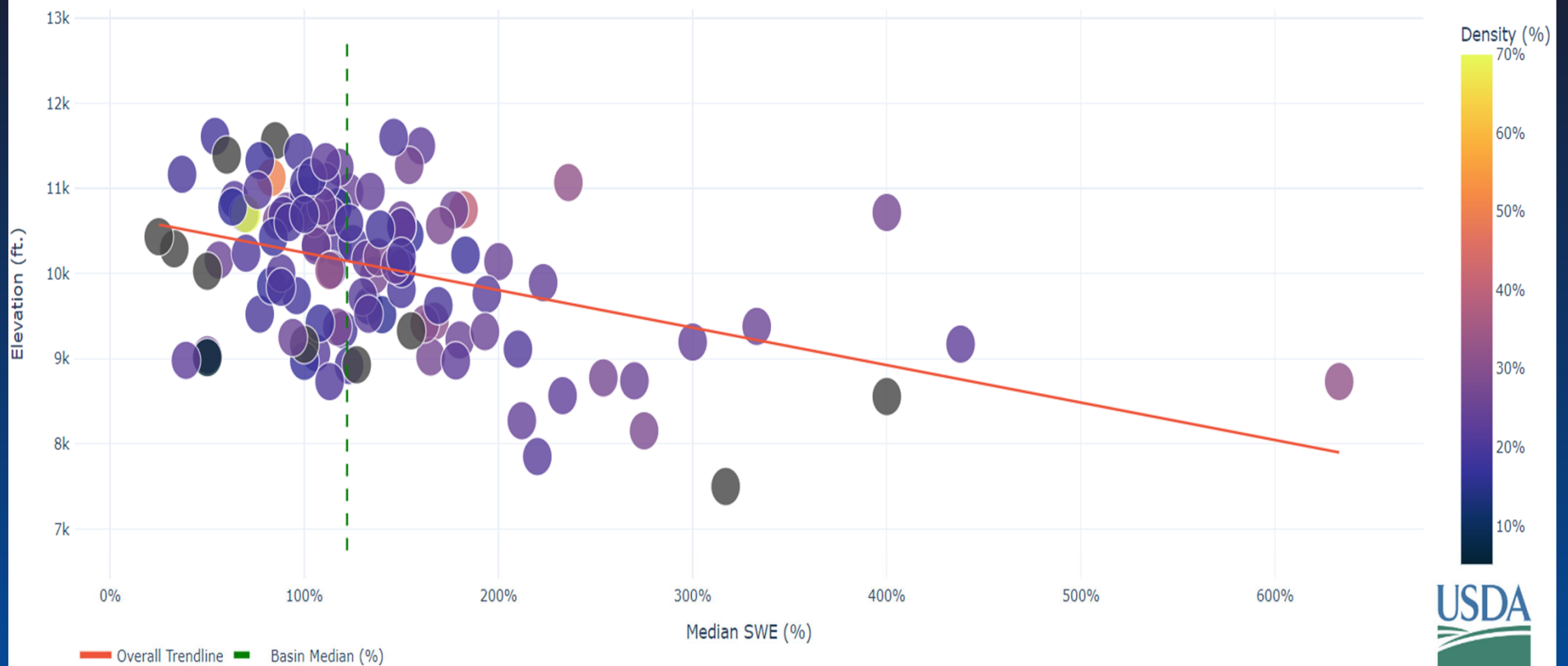




United States Department of Agriculture

Colorado Snow Surveys

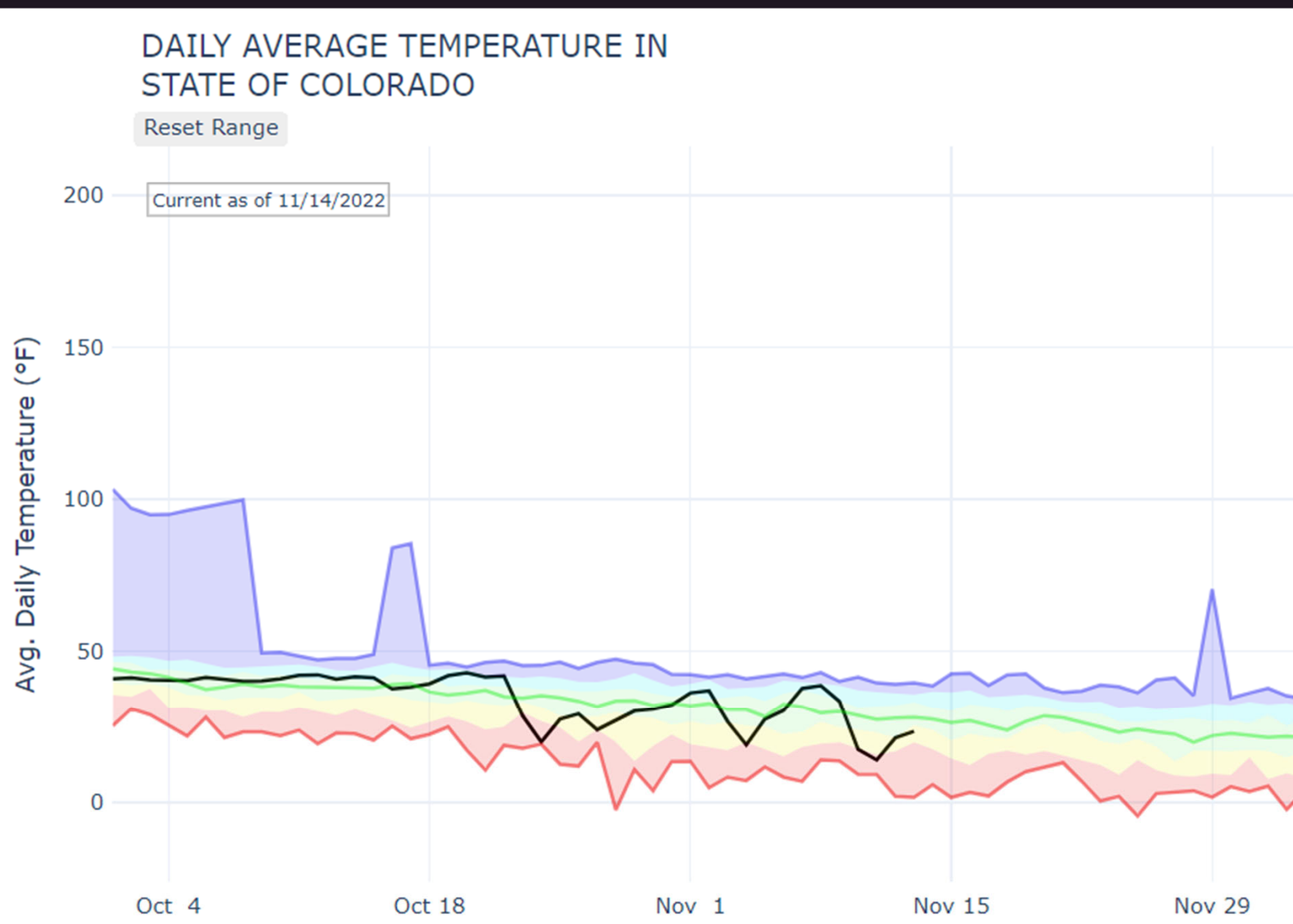
SNOWPACK BY ELEVATION IN STATE OF COLORADO
NOVEMBER 13, 2022





United States Department of Agriculture

Colorado Snow Surveys



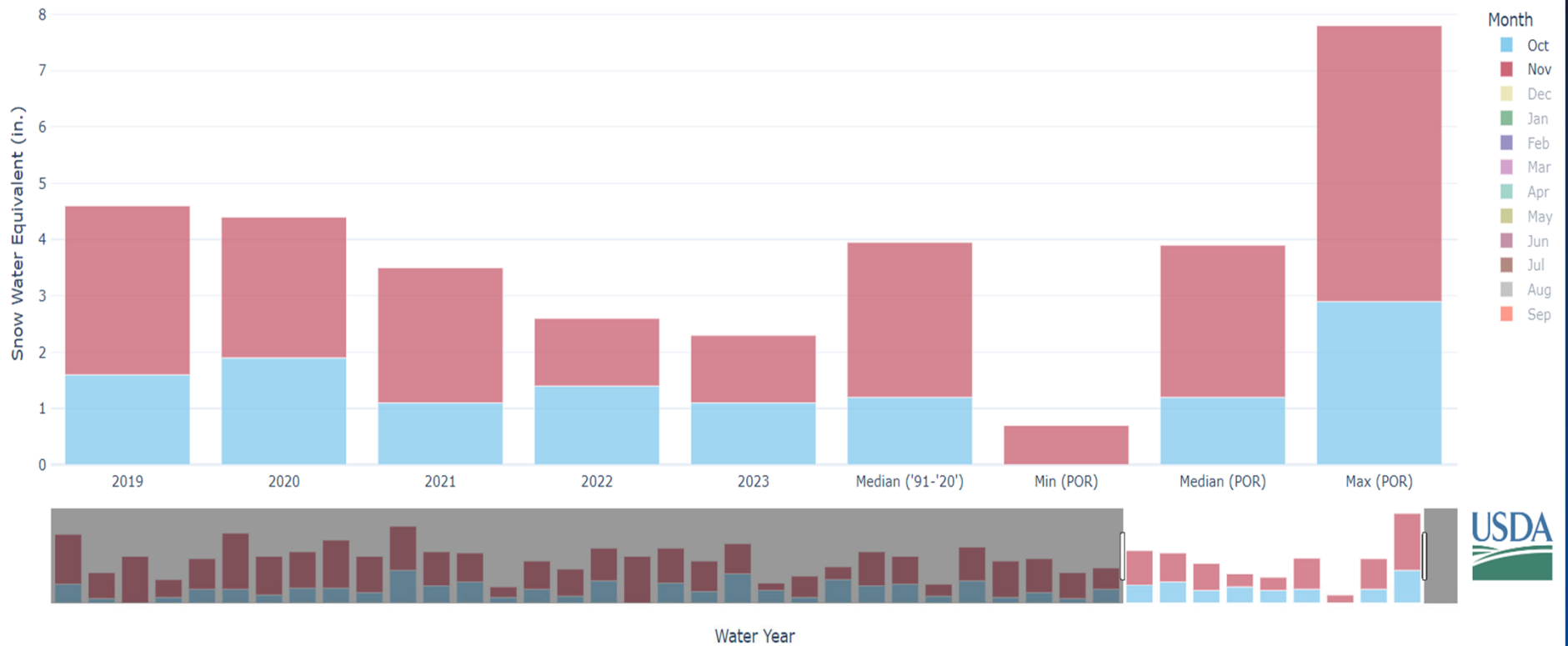
*Temperature data has a known bias and is provisional.



United States Department of Agriculture

Colorado Snow Surveys

STATE OF COLORADO MONTHLY SNOW WATER EQUIVALENT SUMMARY





United States Department of Agriculture

Colorado Snow Surveys



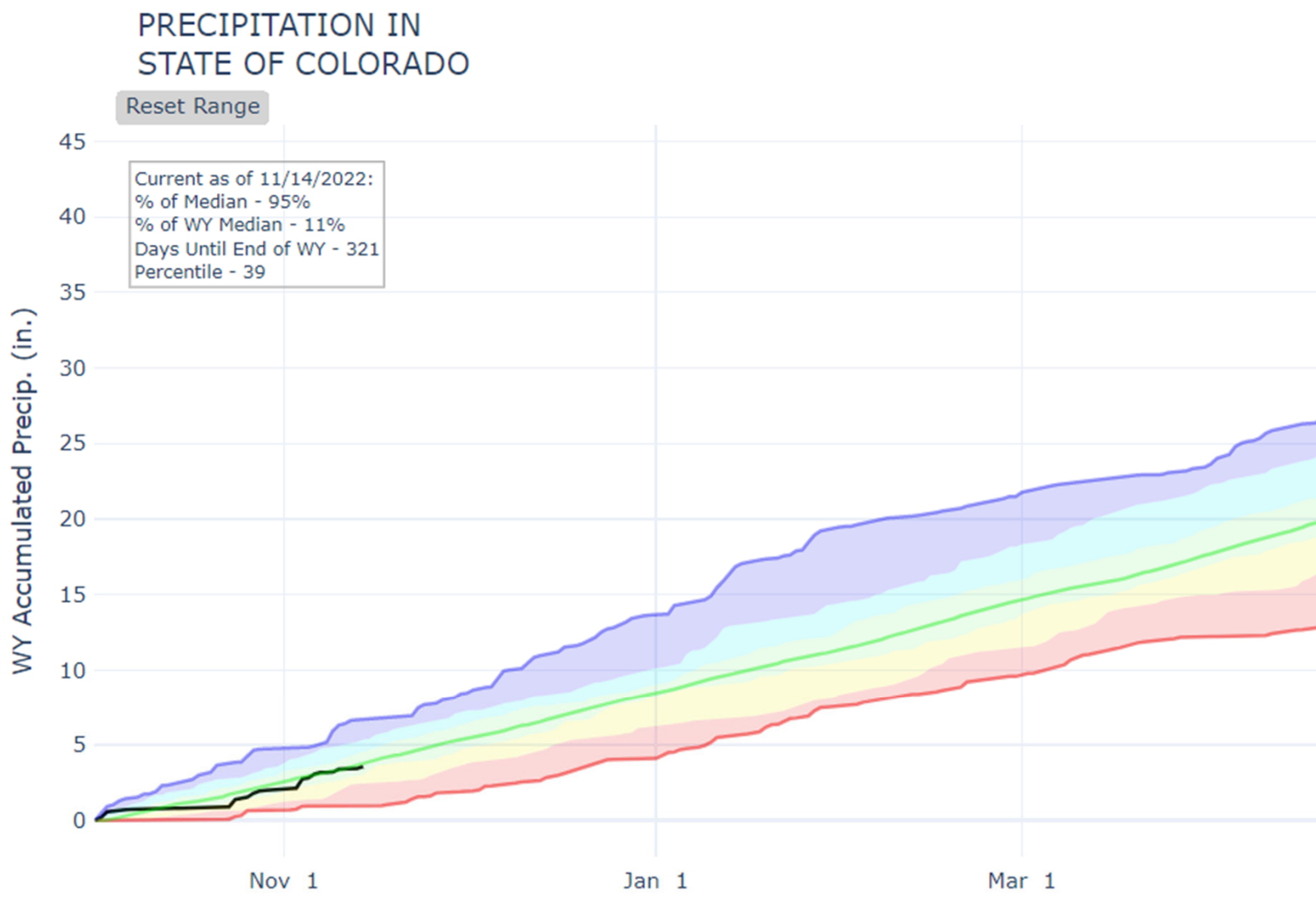
Precipitation





United States Department of Agriculture

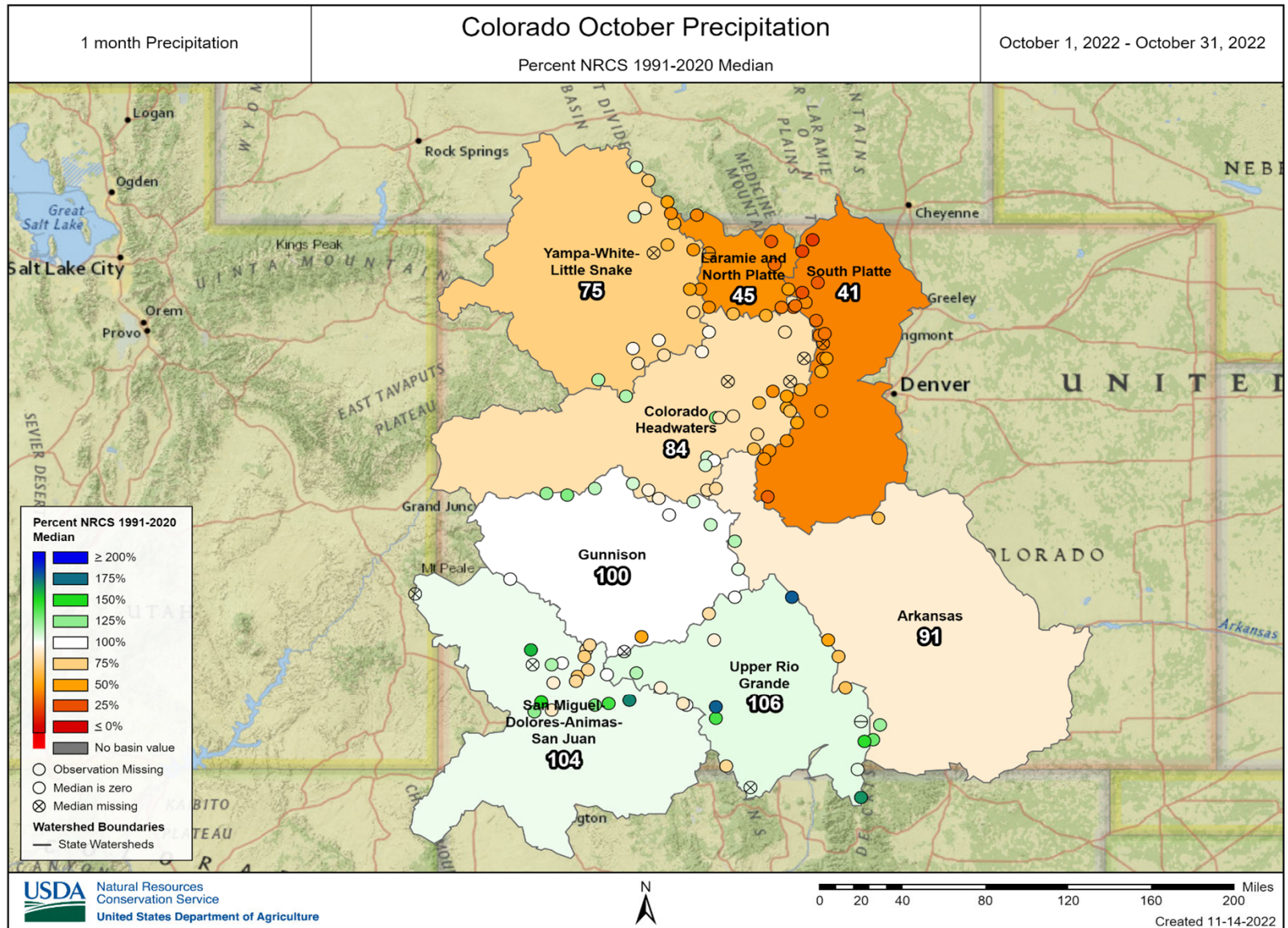
Colorado Snow Surveys





United States Department of Agriculture

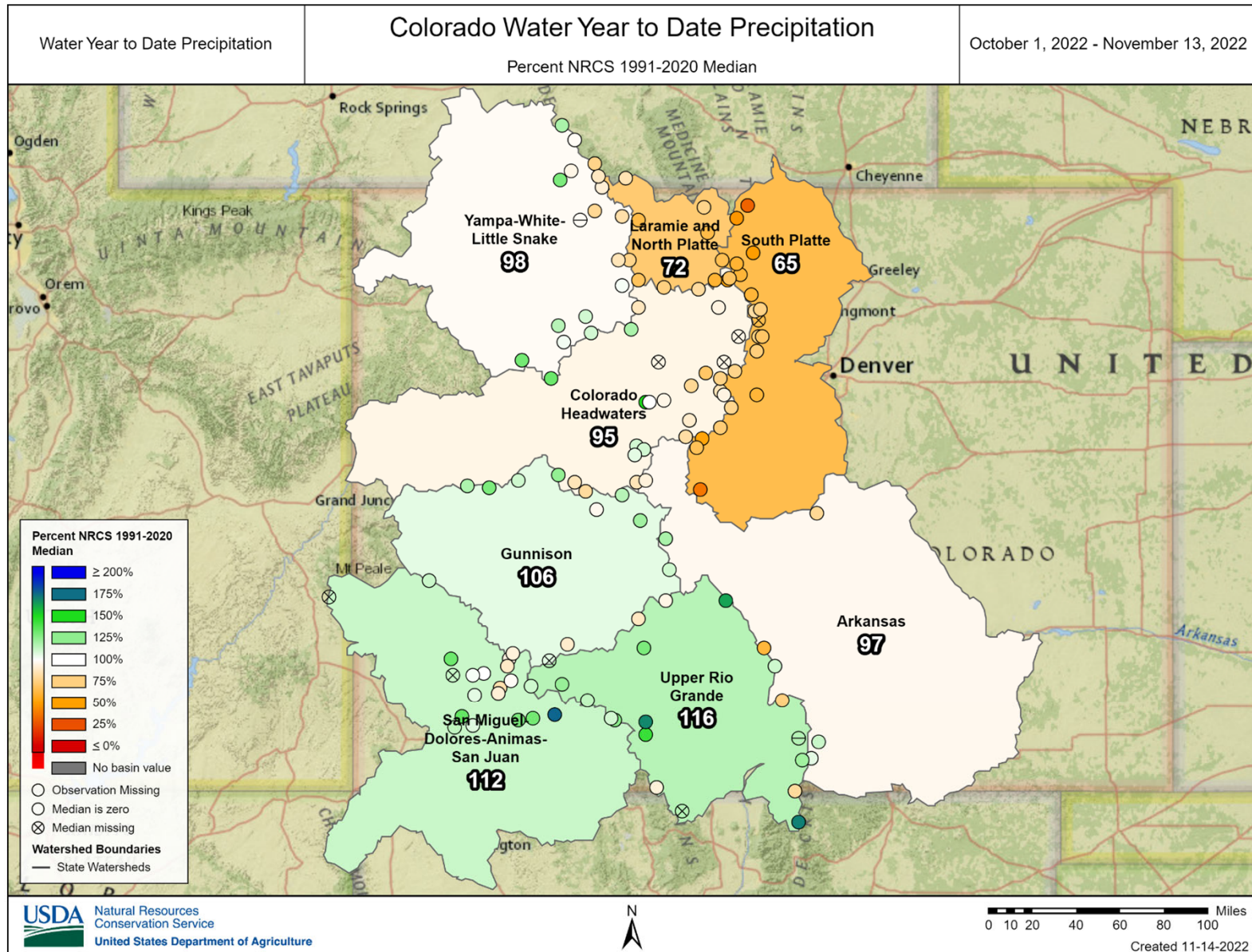
Colorado Snow Surveys





United States Department of Agriculture

Colorado Snow Surveys

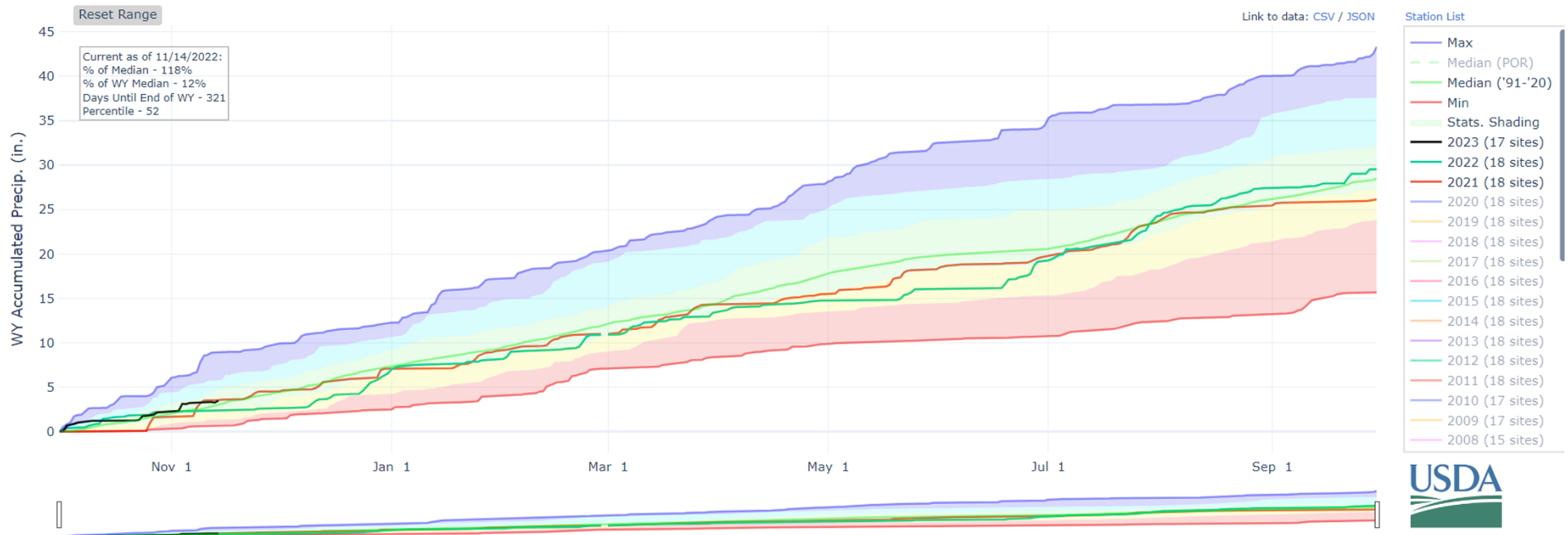




United States Department of Agriculture

Colorado Snow Surveys

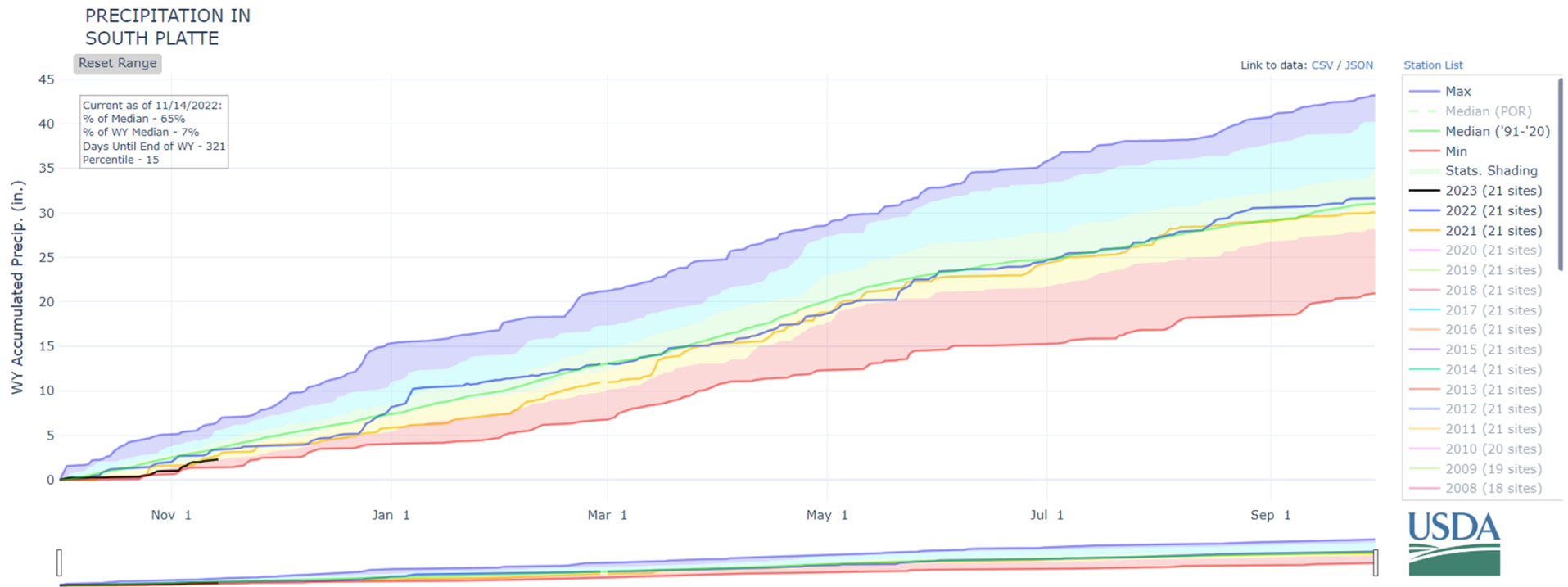
PRECIPITATION IN UPPER RIO GRANDE





United States Department of Agriculture

Colorado Snow Surveys





United States Department of Agriculture

Colorado Snow Surveys

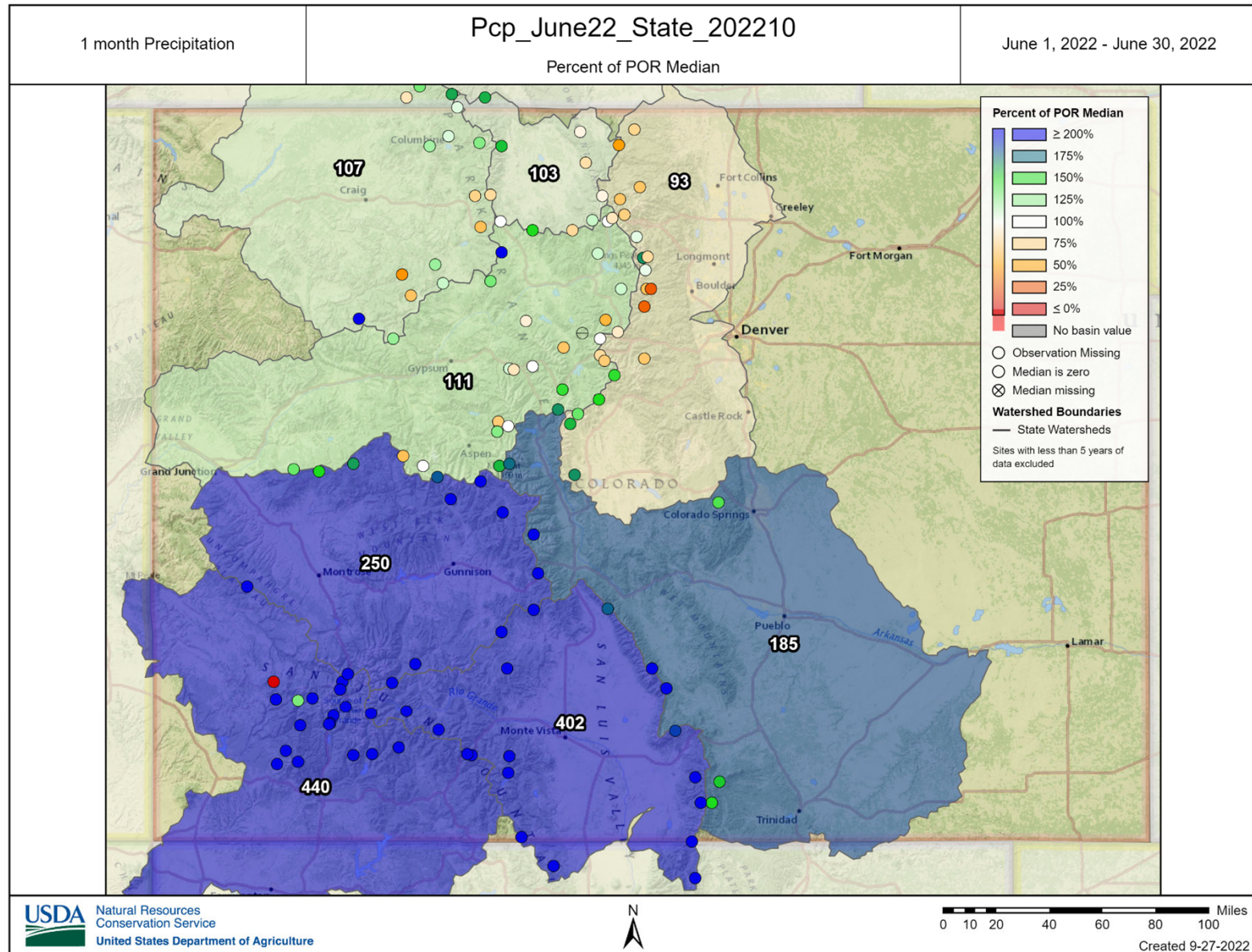
Streamflow





United States Department of Agriculture

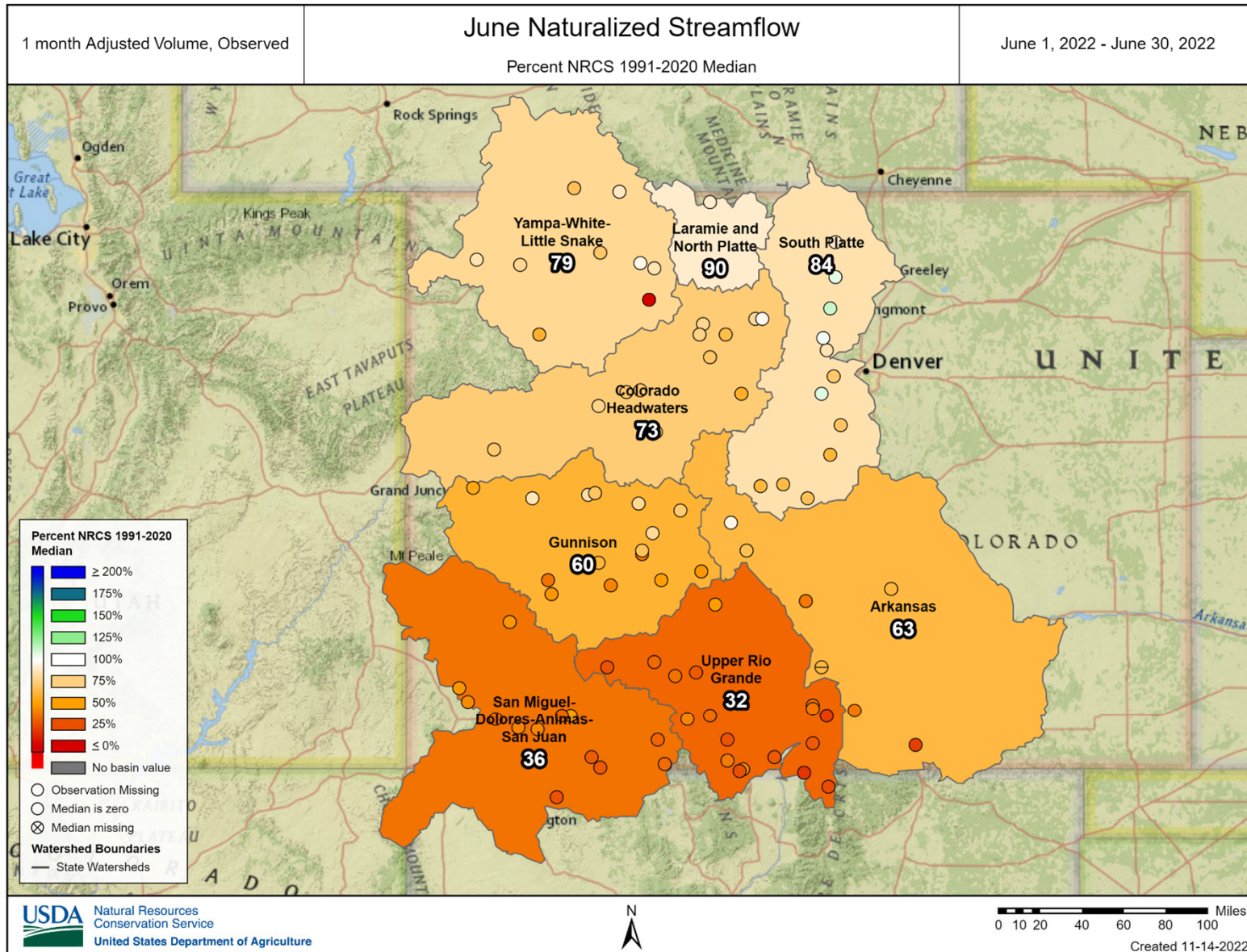
Colorado Snow Surveys





United States Department of Agriculture

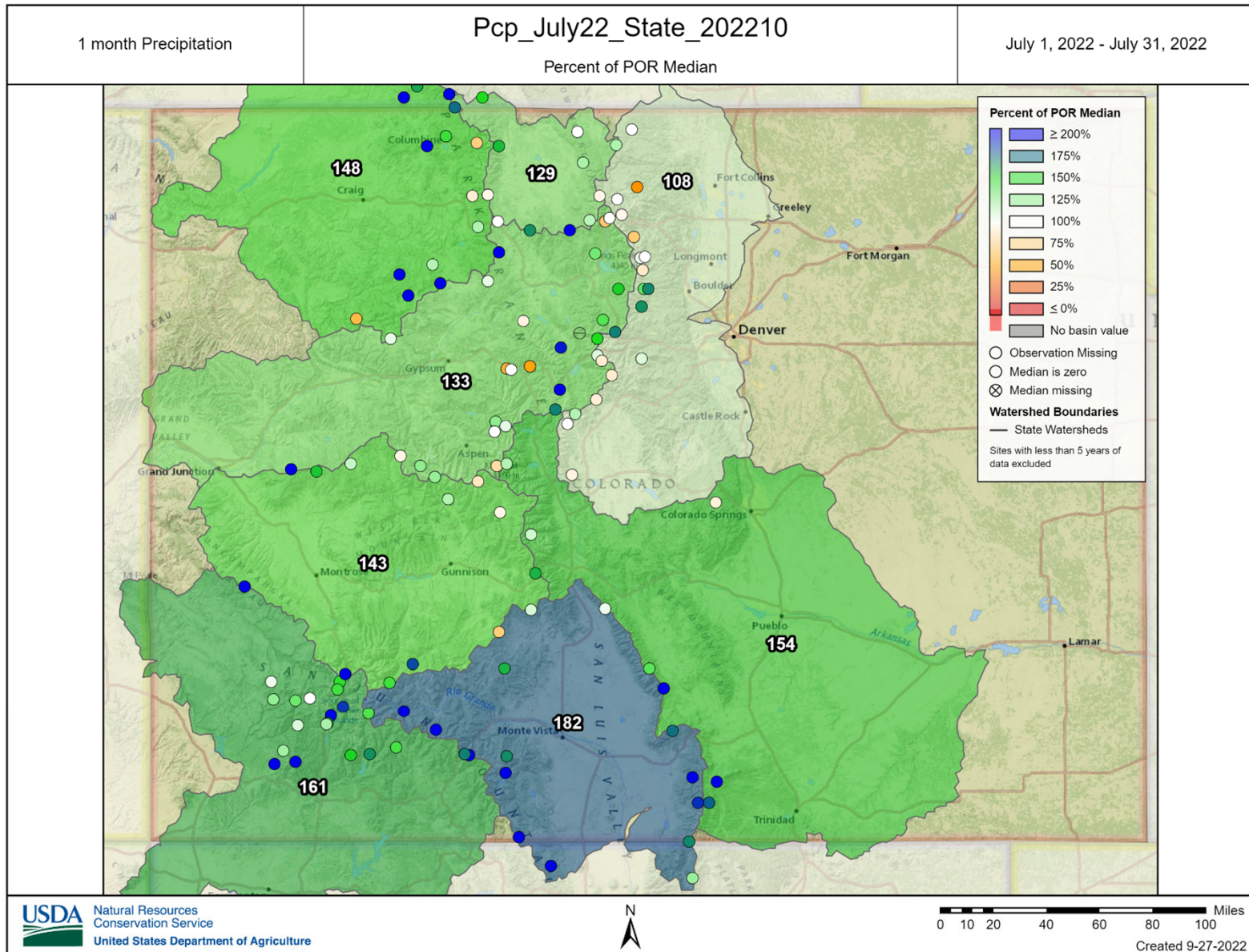
Colorado Snow Surveys





United States Department of Agriculture

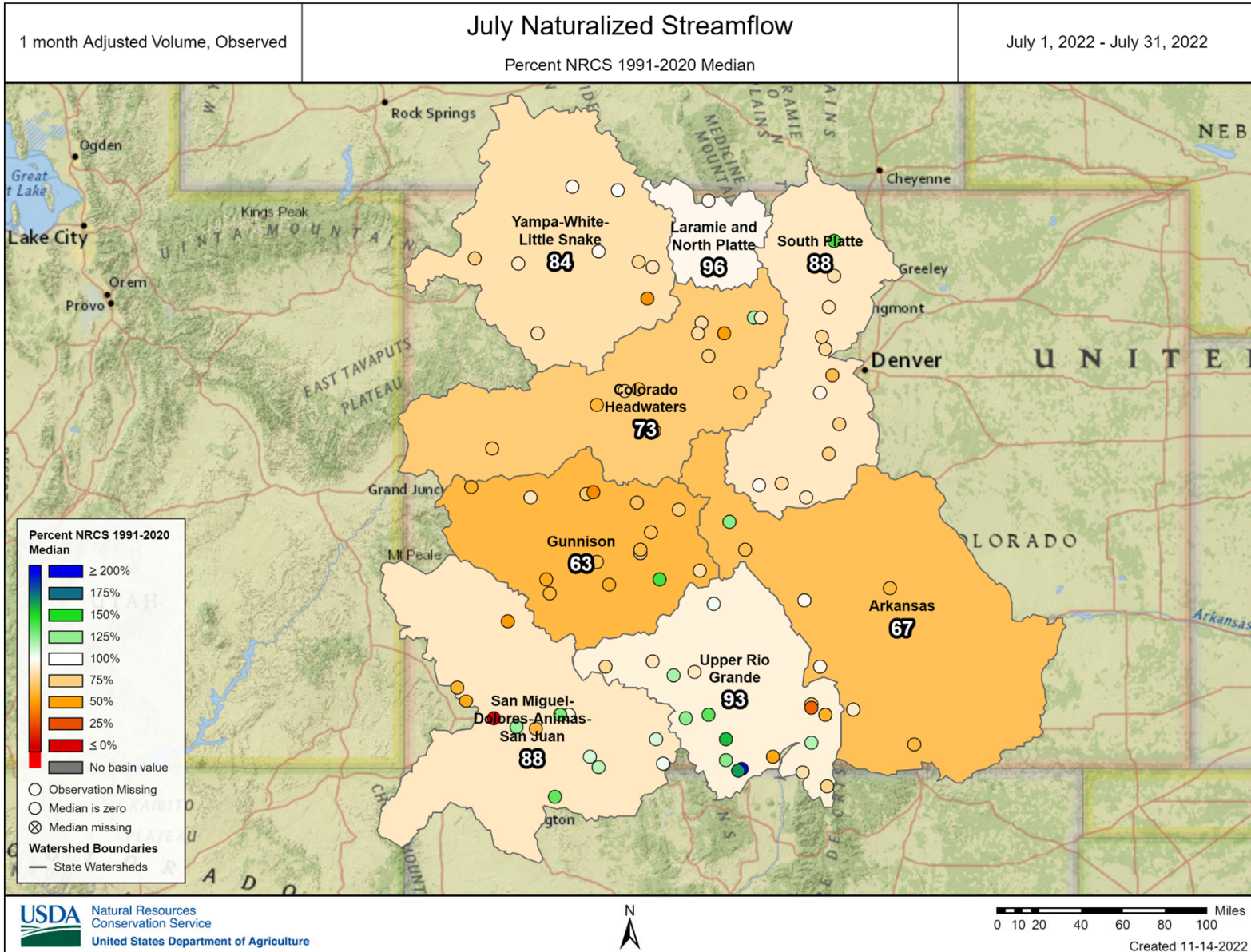
Colorado Snow Surveys





United States Department of Agriculture

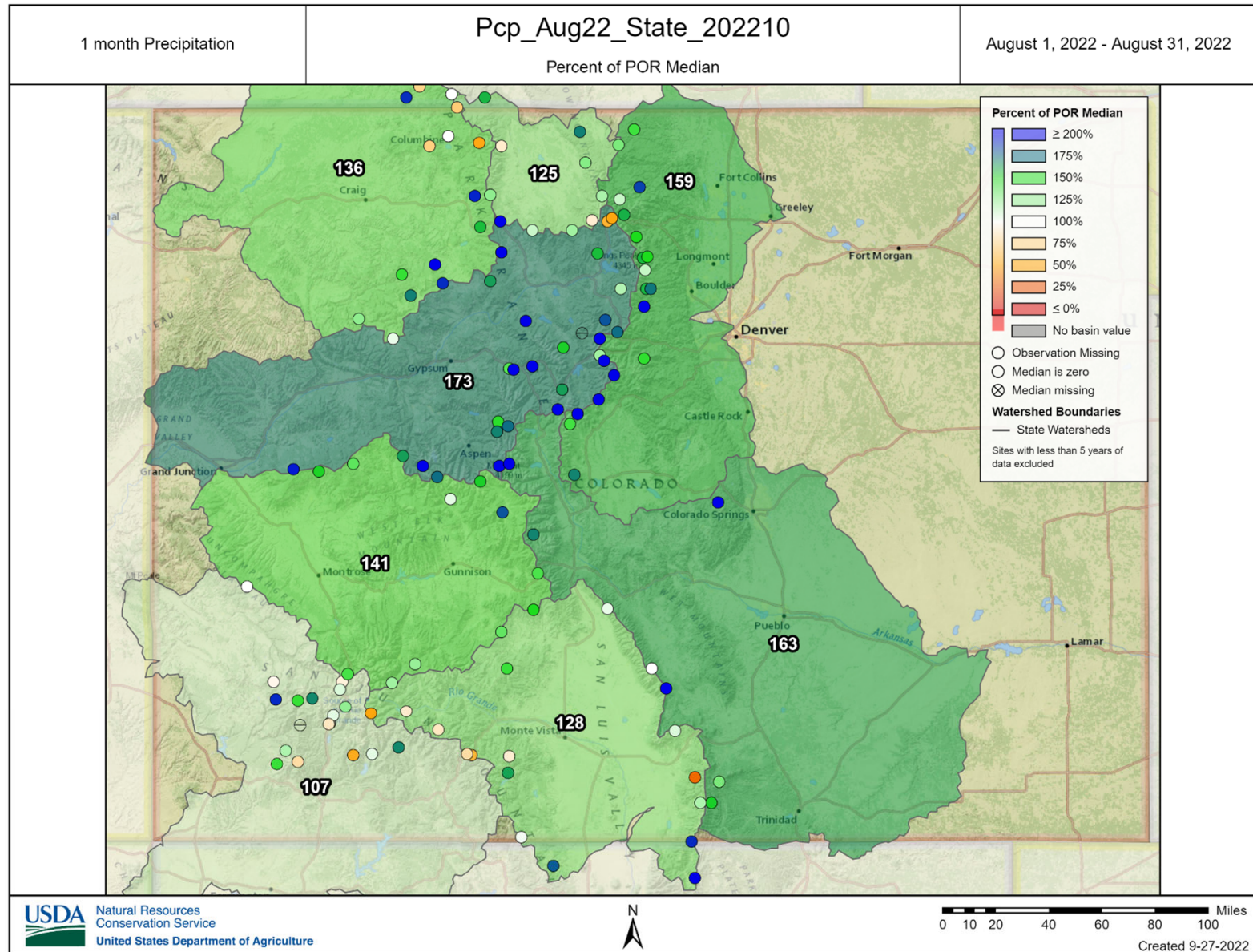
Colorado Snow Surveys





United States Department of Agriculture

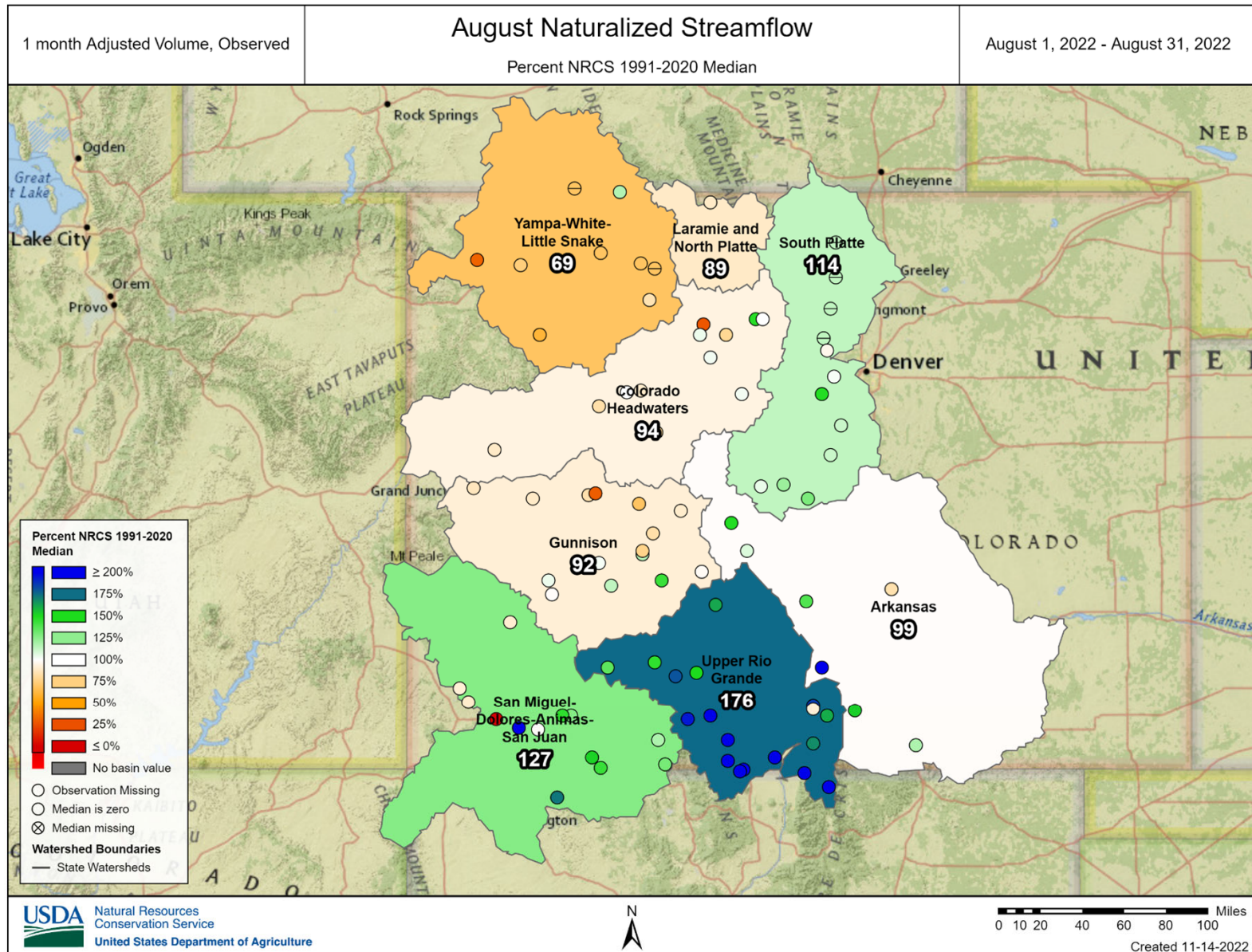
Colorado Snow Surveys





United States Department of Agriculture

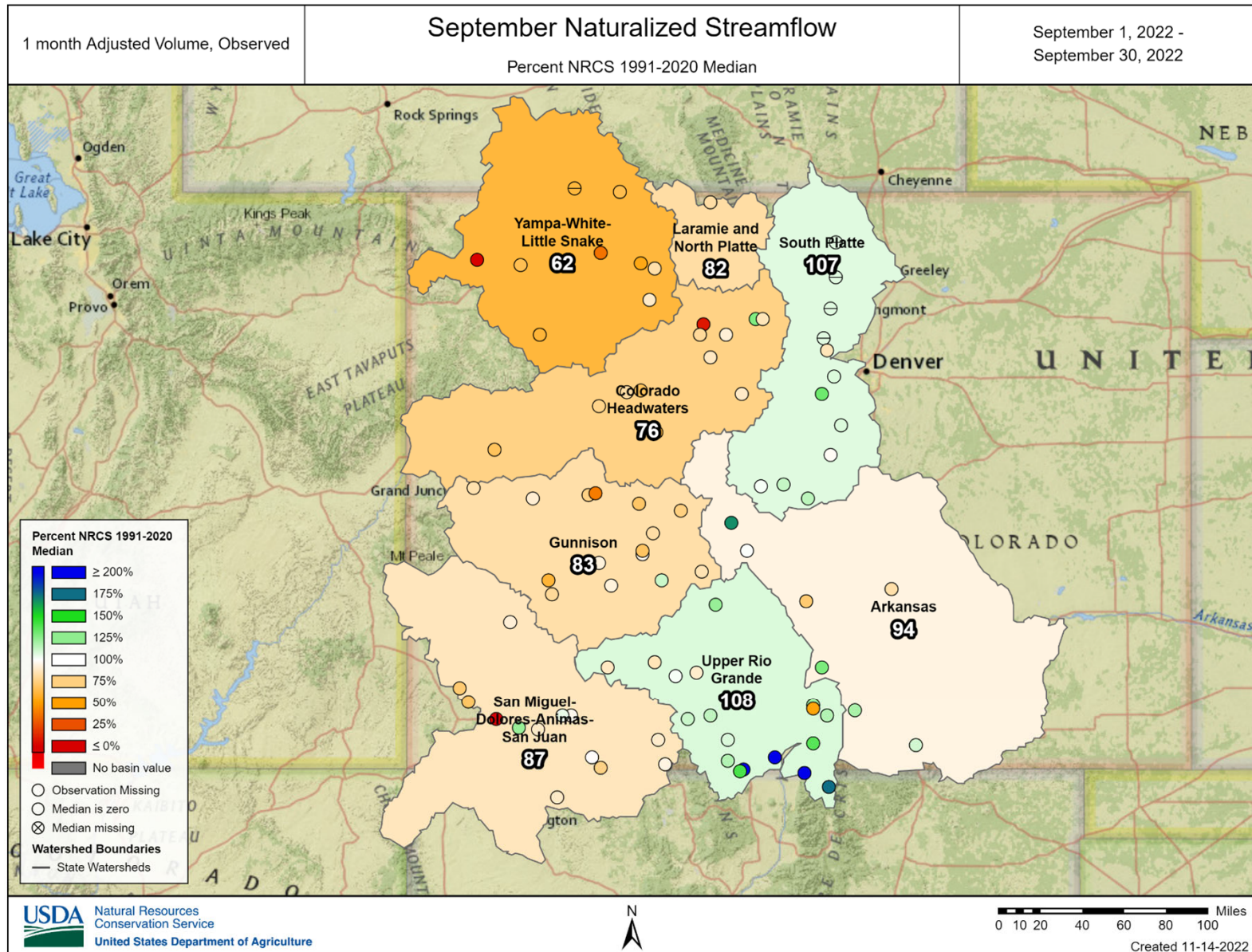
Colorado Snow Surveys





United States Department of Agriculture

Colorado Snow Surveys





United States Department of Agriculture

Colorado Snow Surveys

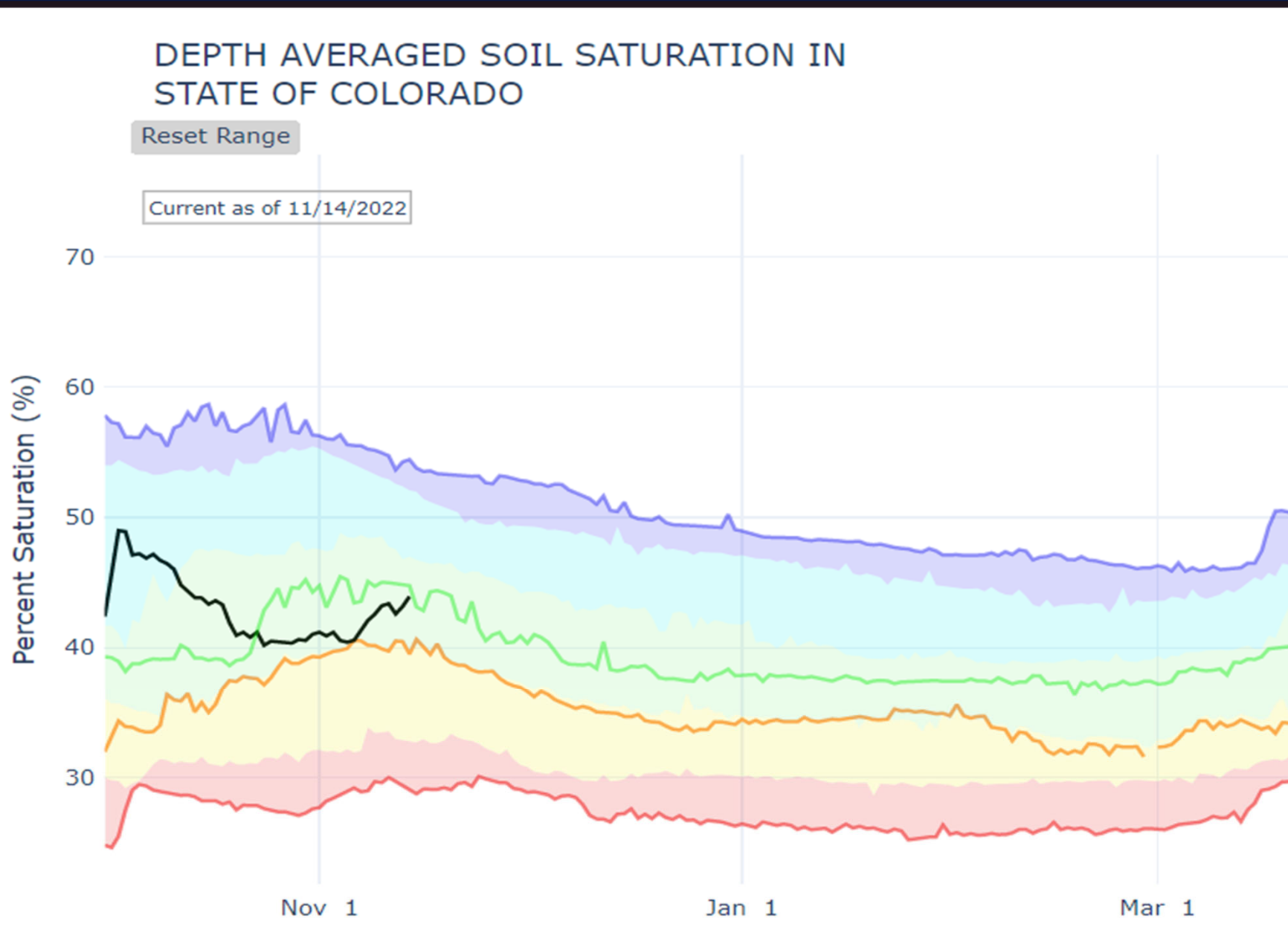
Soil Moisture





United States Department of Agriculture

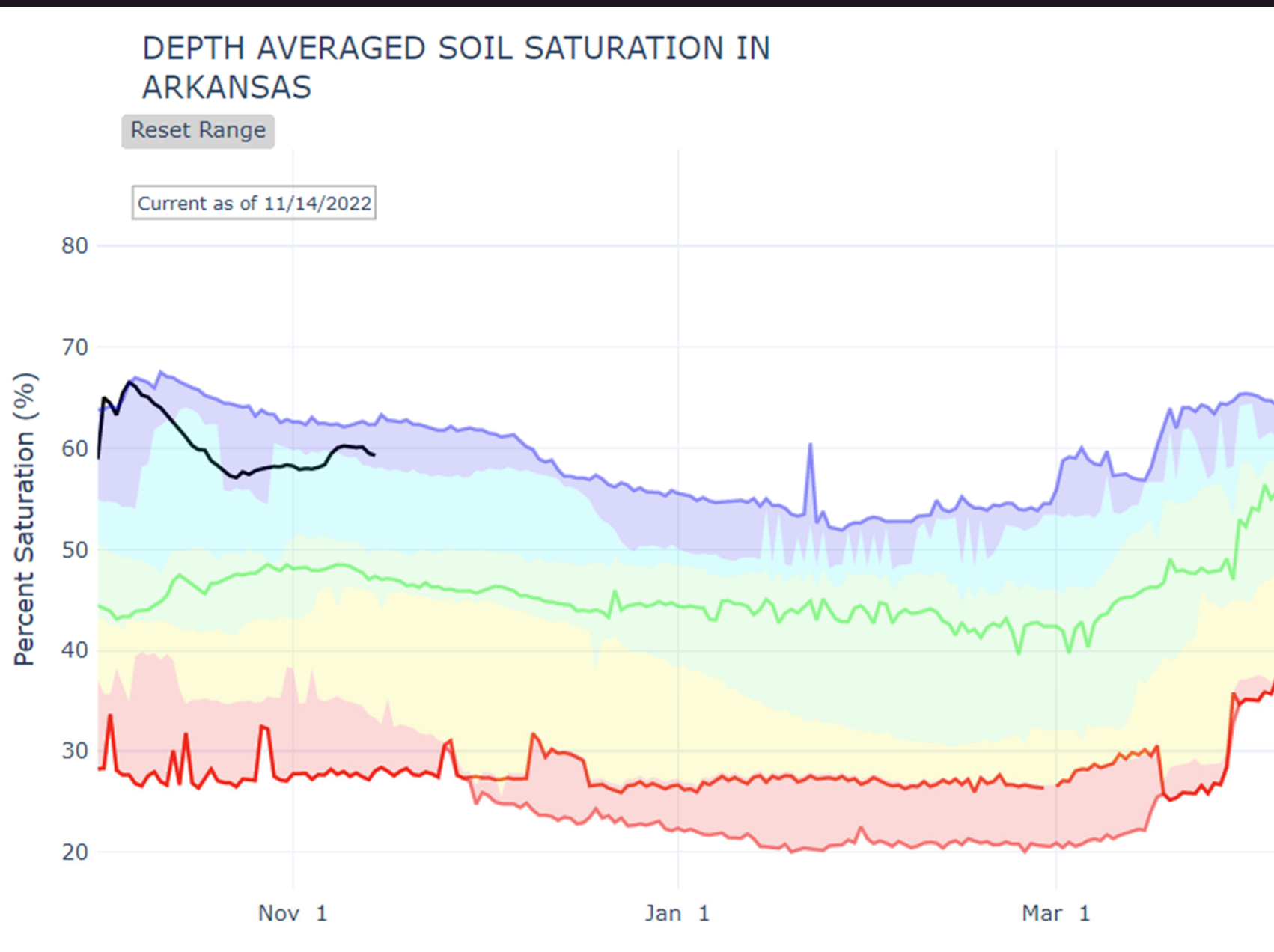
Colorado Snow Surveys





United States Department of Agriculture

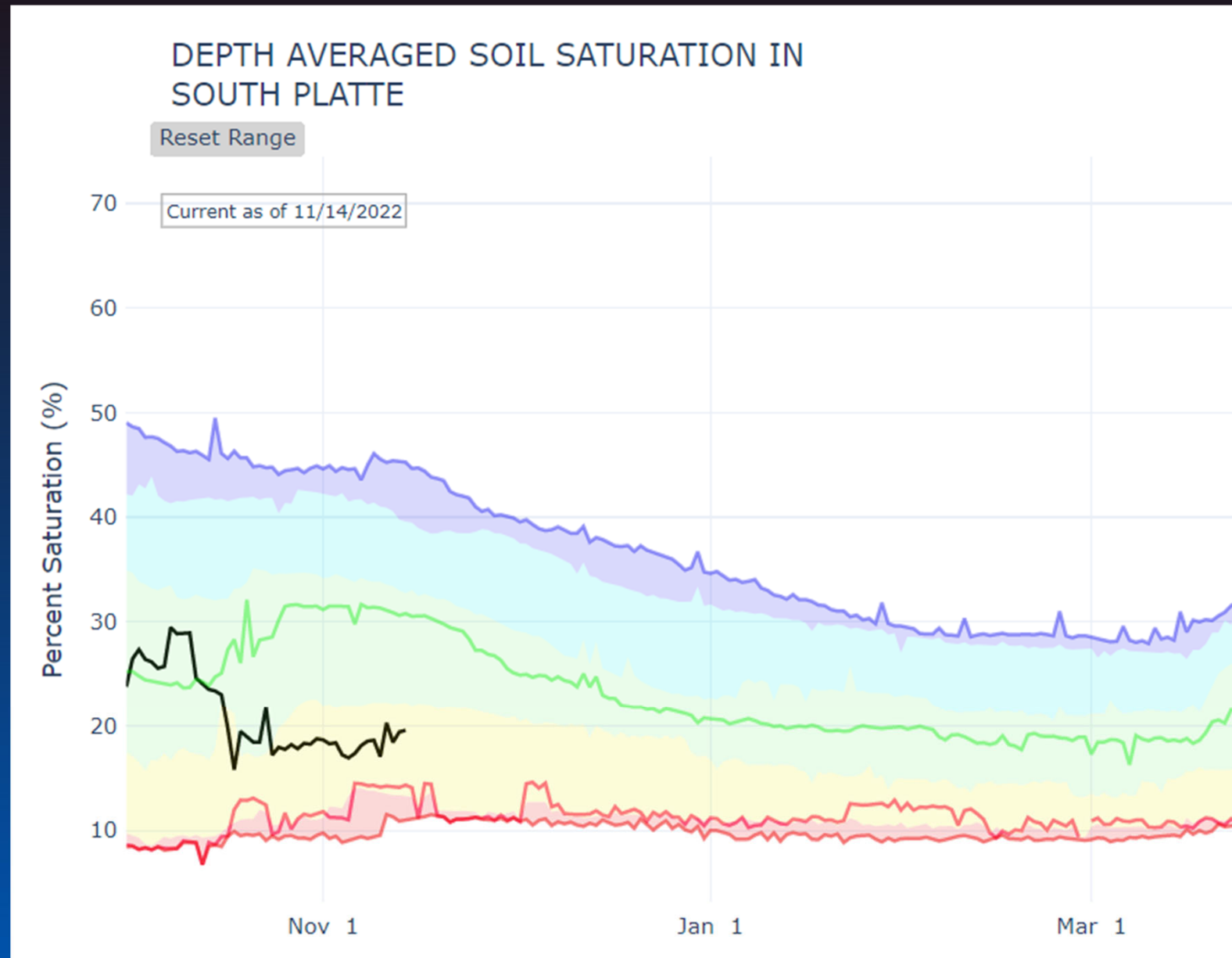
Colorado Snow Surveys





United States Department of Agriculture

Colorado Snow Surveys





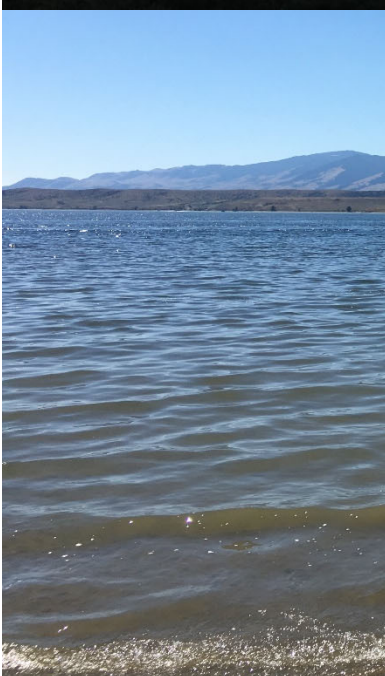
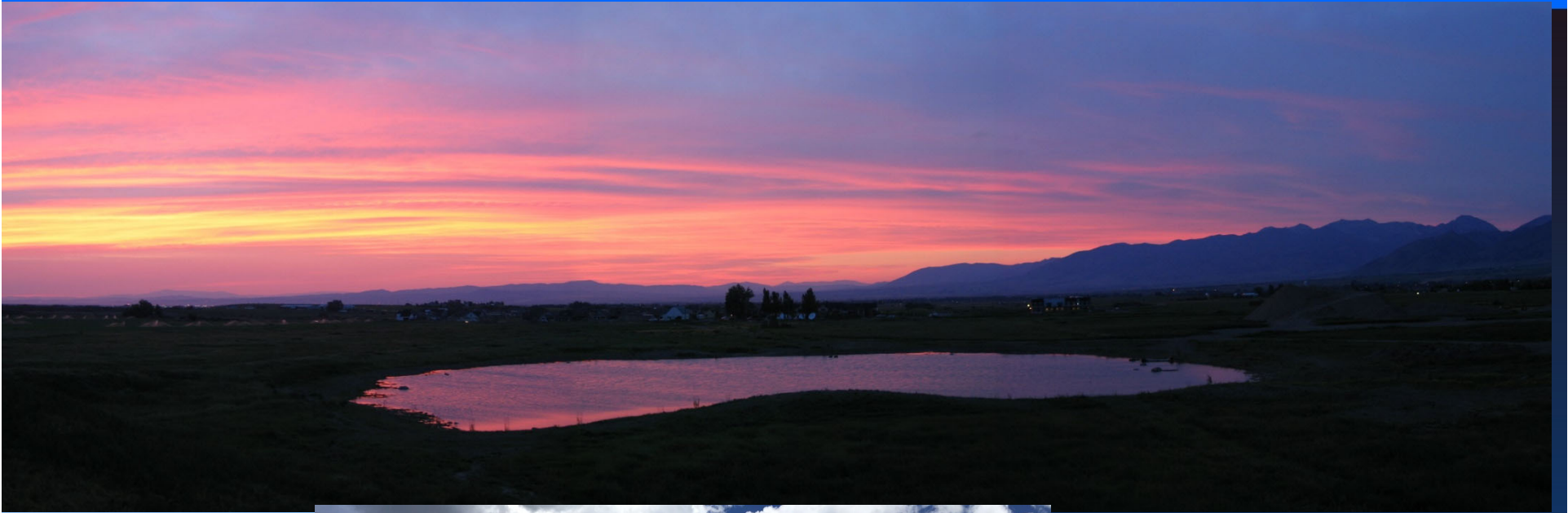
Soil Moisture Data

- Soil Moisture data still new
 - Data is provisional
- Due to a significant monsoon soil moisture outlook has improved
- There are still deficits in some basins and more moisture is still needed.



United States Department of Agriculture

Colorado Snow Surveys

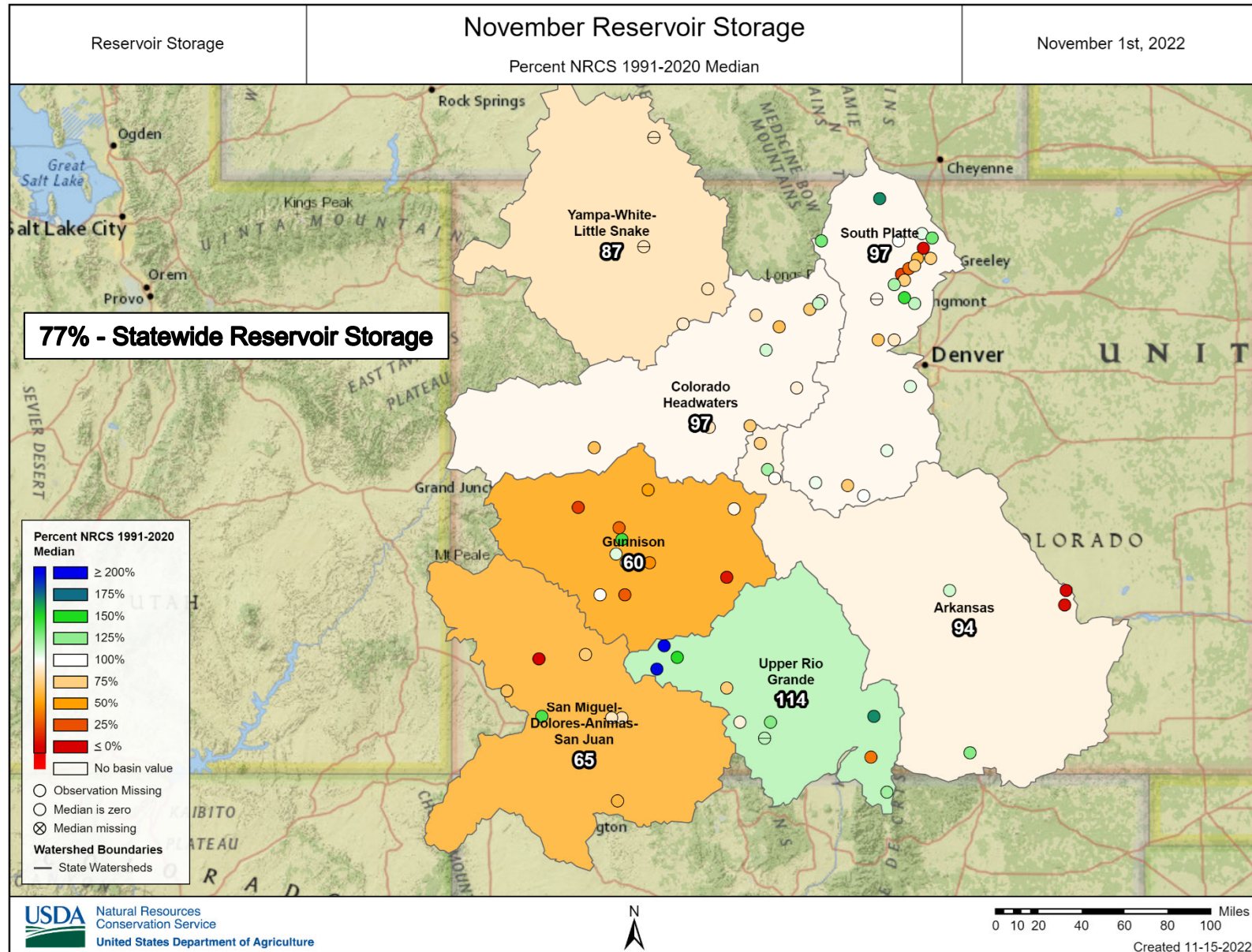


Reservoirs



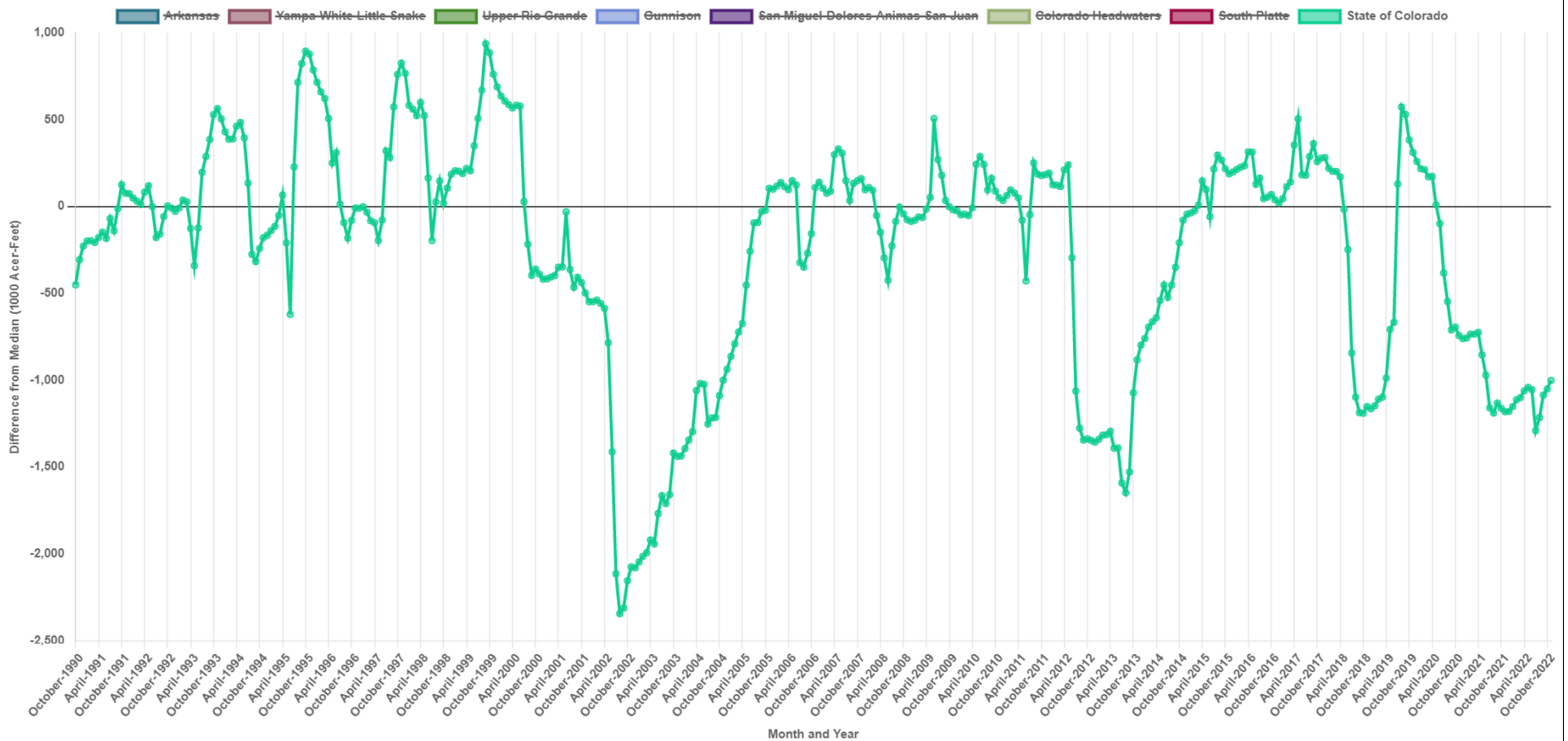
United States Department of Agriculture

Colorado Snow Surveys



Colorado Snow Surveys

Departure from Median

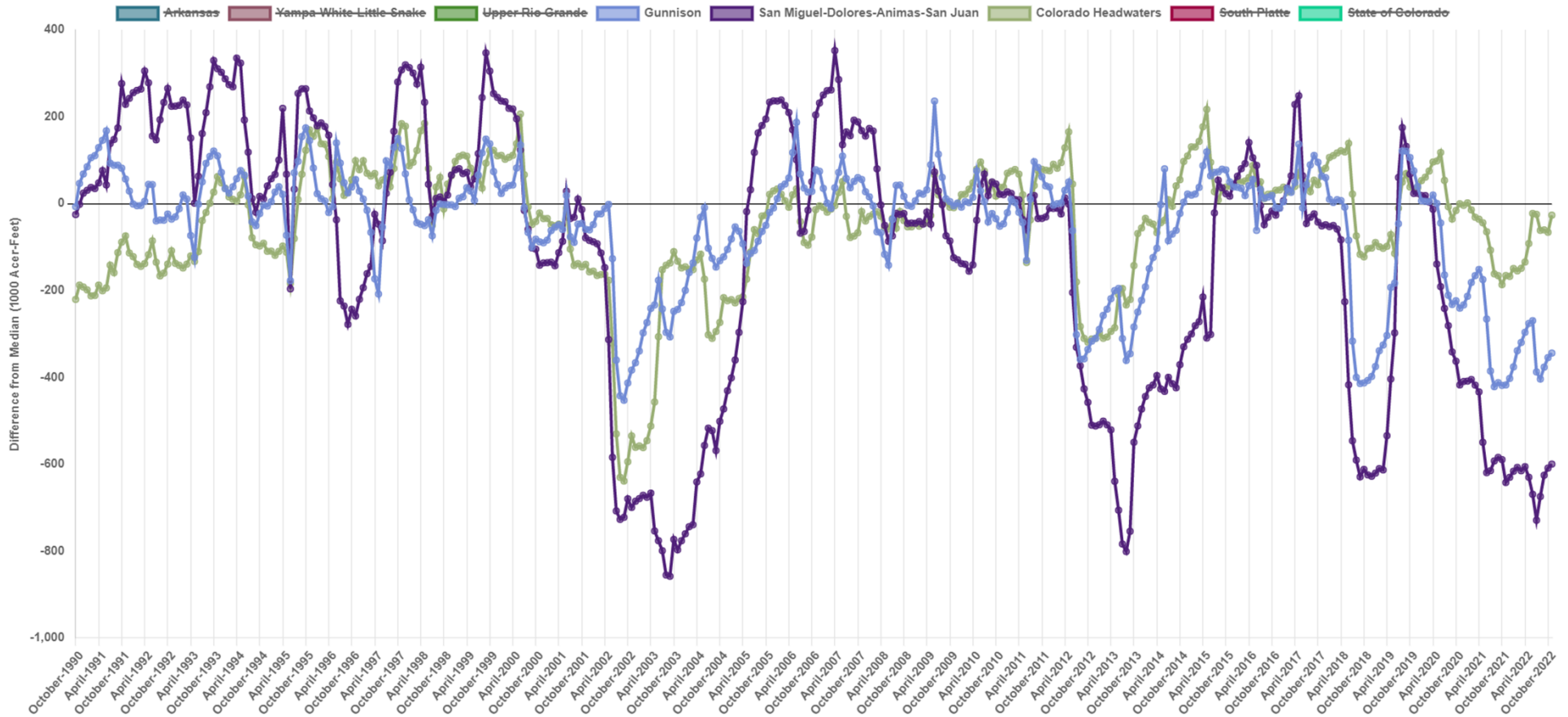




United States Department of Agriculture

Colorado Snow Surveys

Departure from Median

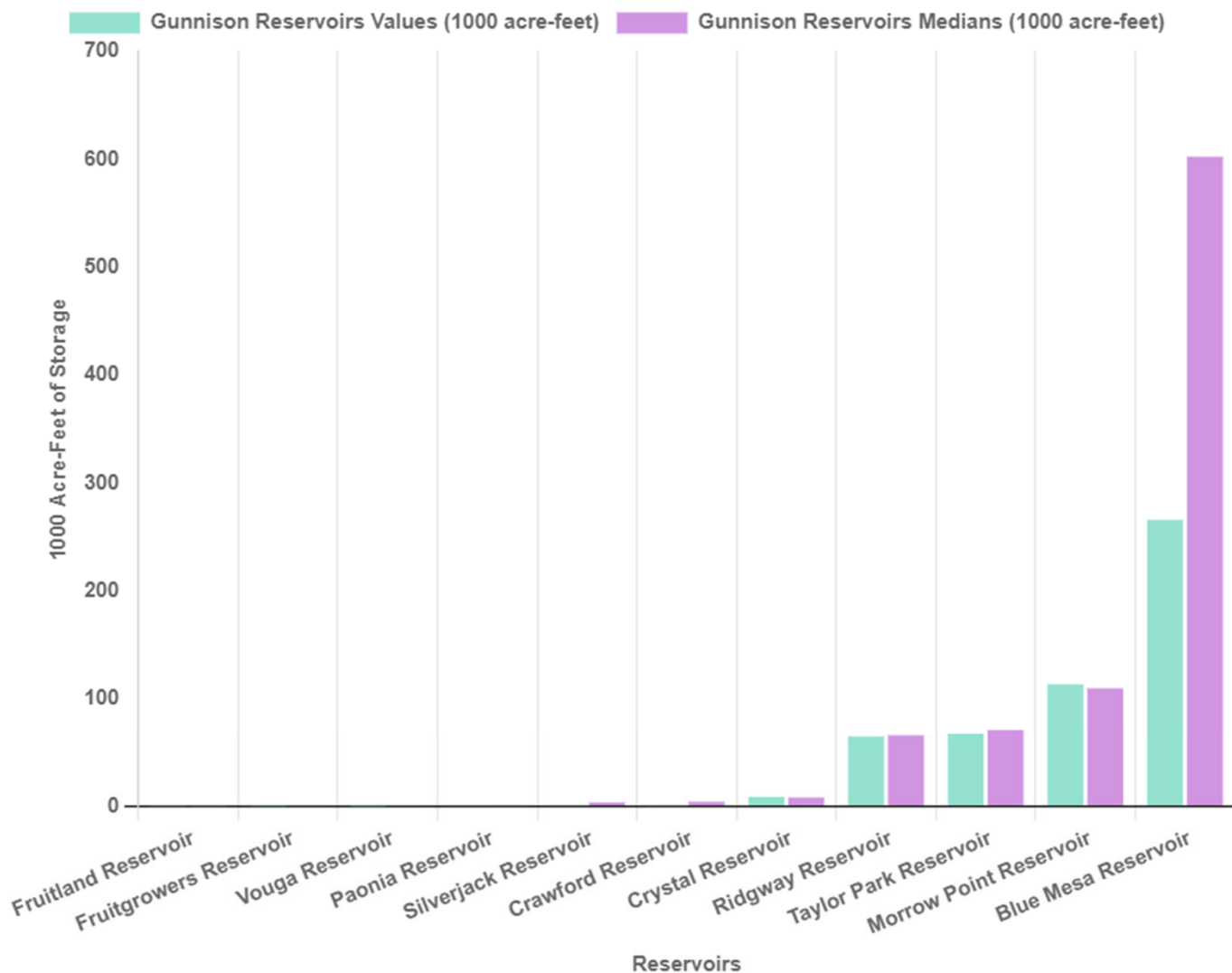




United States Department of Agriculture

Colorado Snow Surveys

Gunnison Reservoir Storage Summary for November 1st 2022

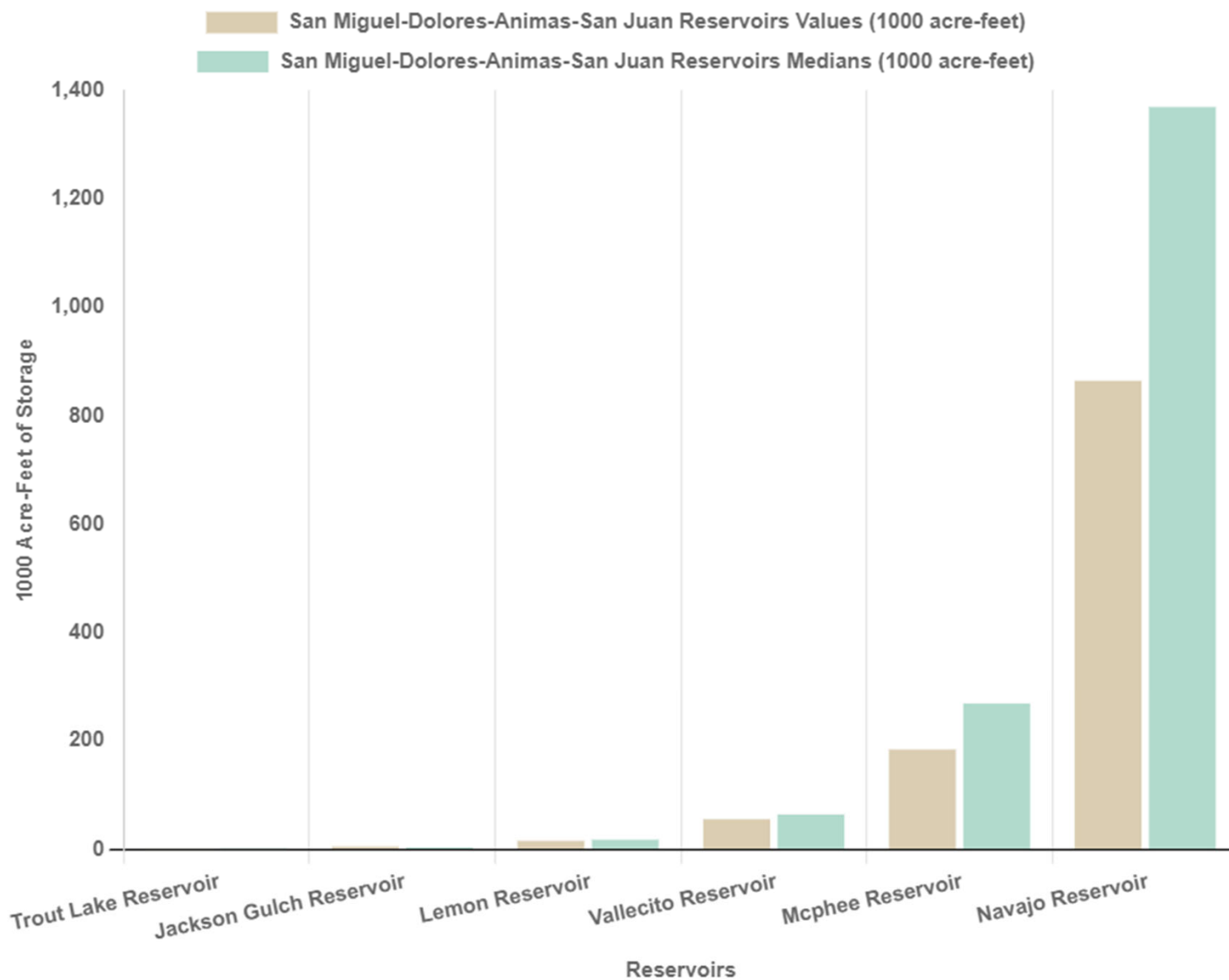




United States Department of Agriculture

Colorado Snow Surveys

San Miguel-Dolores-Animas-San Juan Reservoir Storage Summary for November 1st 2022

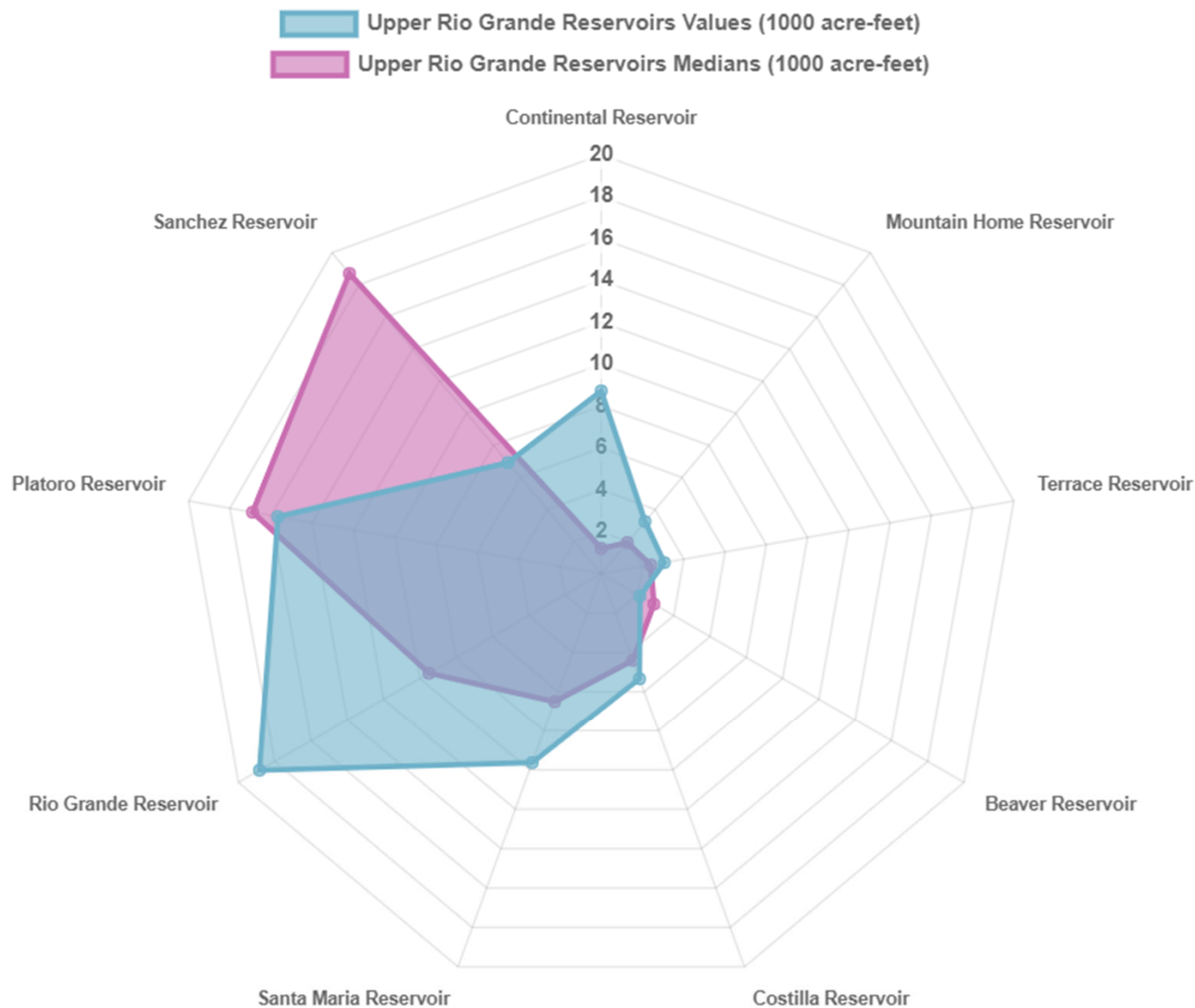


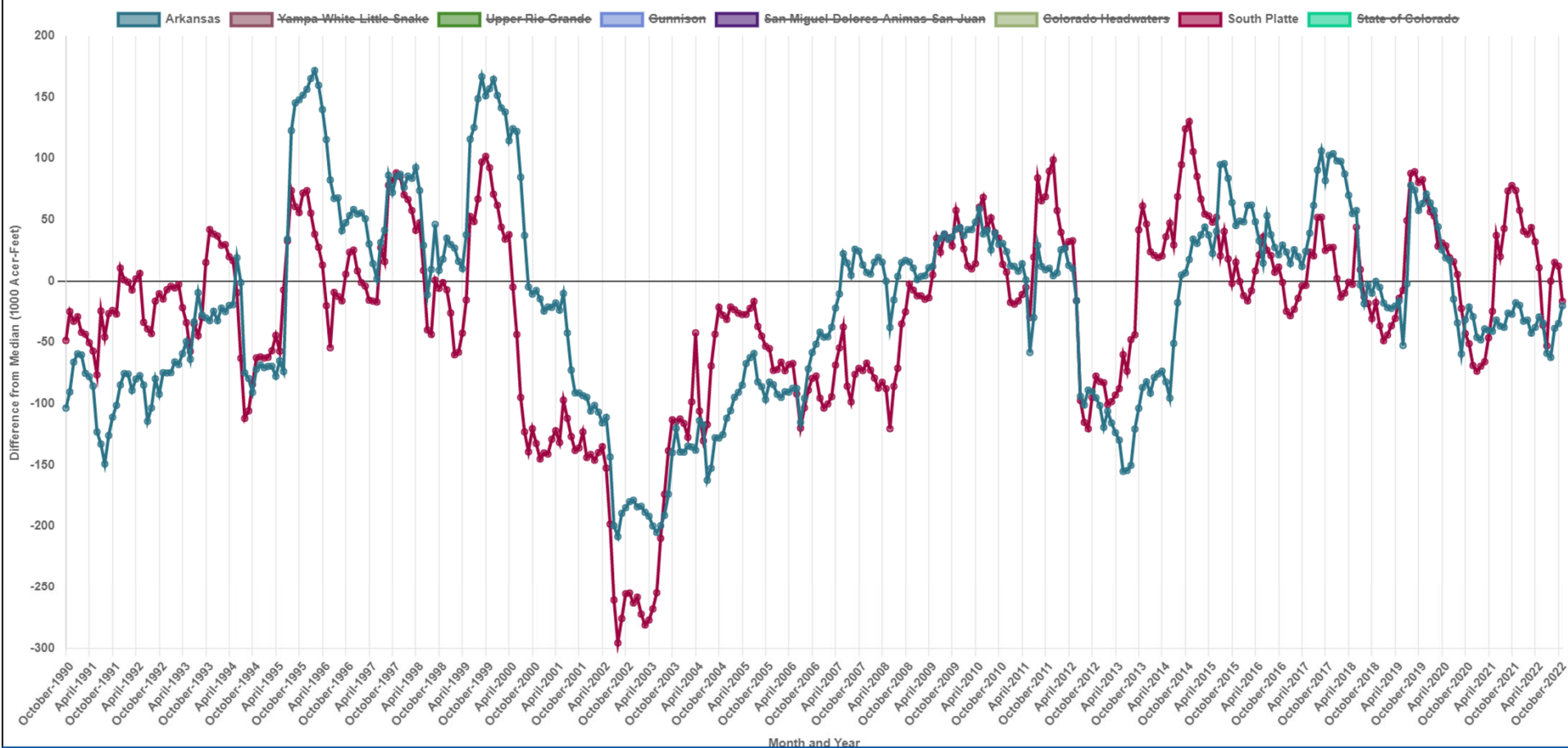


United States Department of Agriculture

Colorado Snow Surveys

Upper Rio Grande Reservoir Storage Summary for November 1st 2022







United States Department of Agriculture

Colorado Snow Surveys

Summary





Summary

- Snowpack is above normal at 118 % of median driven by colder storms and lower elevation accumulation.
- Precipitation is near normal at 95% of median WYD precipitation.
- Reservoirs - Near to well below normal. Statewide 77% of normal.
- Soil Moisture is near to below normal but remains above last year values due to a good monsoon.
- The monsoon was also reflected in improvements in streamflow during the summer months.



United States Department of Agriculture

Colorado Snow Surveys

Questions?



United States Department of Agriculture

Colorado Snow Surveys

Non-Discrimination Statement:

In accordance with Federal civil rights law and U.S. Department of agriculture (USDA) civil rights regulations and policies, the USDA, its Agencies, offices, and employees, and institutions participating in or administering USDA programs are prohibited from discriminating based on race, color, national origin, religion, sex, gender identity (including gender expression), sexual orientation, disability, age, marital status, family/parental status, income derived from a public assistance program, political beliefs, or reprisal or retaliation for prior civil rights activity, in any program or activity conducted or funded by USDA (not all bases apply to all programs). Remedies and complaint filing deadlines vary by program or incident.

Persons with disabilities who require alternative means of communication for program information (e.g., Braille, large print, audiotape, American Sign Language, etc.) should contact the responsible Agency or USDA 's TARGET Center at (202) 720-2600 (voice and TTY) or contact USDA through the Federal Relay Service at (800) 877-8339. Additionally, program information may be made available in languages other than English.

To file a program discrimination complaint, complete the USDA Program Discrimination Complaint Form, AD-3027, found online at [How to File a Program Discrimination Complaint](#) and at any USDA office or write a letter addressed to USDA and provide in the letter all of the information requested in the form. To request a copy of the complaint form, call (866) 632-9992. Submit your completed form or letter to USDA by: (1) mail: U.S. Department of Agriculture, Office of the Assistant Secretary for Civil Rights, 1400 Independence Avenue, SW, Washington, D.C. 20250-9410; (2) fax: (202) 690-7442; or (3) email: program.intake@usda.gov.



United States Department of Agriculture

Colorado Snow Surveys

Water Availability Task Force Meeting

November 15th, 2022

NRCS Snow Survey and Water Supply Forecasting Program

Joel Atwood

Hydrologist

joel.atwood@usda.gov

720-766-4632

<http://www.nrcs.usda.gov/wps/portal/nrcs/main/co/snow/>