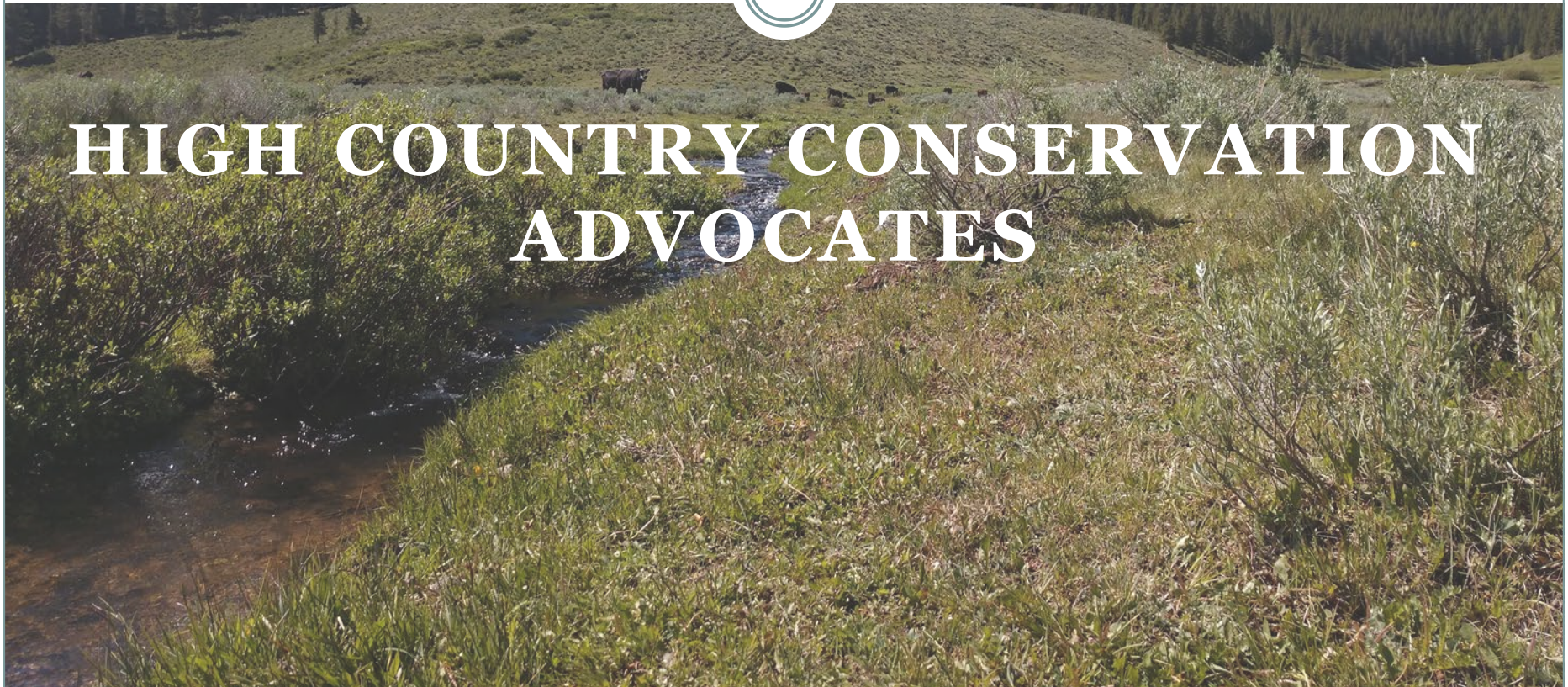


2022 Instream Flow Proposals



**HIGH COUNTRY CONSERVATION
ADVOCATES**





Water Division 4

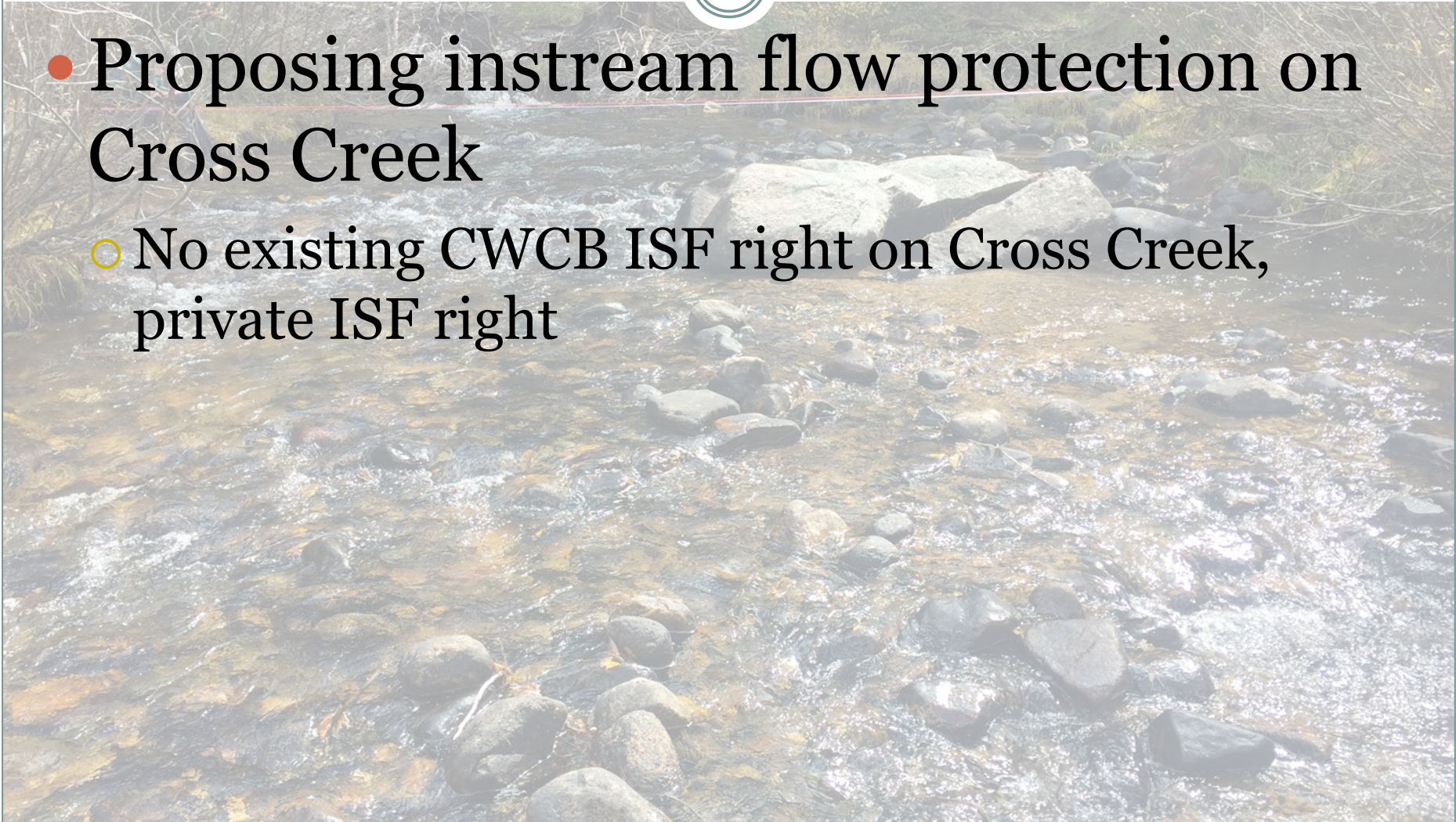
Cross Creek



Instream Flow Right



- Proposing instream flow protection on Cross Creek
 - No existing CWCB ISF right on Cross Creek, private ISF right





Natural Environment

Fishery of unknown species (fish observed during sampling)

Healthy riparian area featuring mixed forest and willows.

Extensive beaver complexes supported by Cross Creek.



Current R2CROSS Criteria

Hydraulic Criteria

- 1 ft./sec Average Velocity
- 50% Wetted Perimeter
- Average Depth

Flow Recommendations

- Flow recommendations meet 3 of 3 hydraulic criteria





Proposed ISFs

Cross Section (Date)*	Measured Discharge	Bankfull Top Width (ft)	Winter Flow Recomm endation (cfs)	Summer Flow Recommendation (cfs)
Cross Creek (6-28-21)	1.41	7.7	0.97 cfs	1.4 cfs
Preliminary Cross Creek ISF Recommendations			0.97 cfs (May 1- Aug. 31)	1.4 cfs (Sep. 1 – Apr. 30)

*Additional cross section may be completed in 2022

Water Availability



Physical

- Used a combination of StreamStats and R2Cross to look at physical availability
- No gage data available

Water Availability

Legal

- Rare private instream flow rights on Cross Creek. Rights associated with Lottis Creek in Case No. W1987. Private instream flow right for Cross Creek amounts to 5 cfs. w/priority date 1910.
- For the beneficial use of “stock water, recreation, fish culture, wildlife procreation, and heritage preservation.”
- No diversions.





Stakeholders

**US Forest
Service**

**Colorado Parks &
Wildlife**

Gunnison County

**Water rights
owners**

**The Upper
Gunnison River
Water
Conservancy
District**

Instream Flow Reach	Upper Terminus	Lower Terminus	Total Length (miles)	Land Ownership	
				Private (%)	Public (%)
Cross Creek	Headwaters	Confluence of Cross Creek and Lottis Creek	2.3	Riparian Corridor 0%	Riparian Corridor 100%
				Watershed Composition 3%	Watershed Composition 97%



Water Division 4

Cameron Creek



Instream Flow Rights



- No existing CWCB ISF right on Cameron Creek
- Private instream flow right, discussed below

Natural Environment

Fishery of unknown species (fish observed during sampling). CPW had not sampled Cameron

Healthy riparian area featuring riffles, small pools, and beaver ponds

Abundant macroinvertebrates noted while conducting pebble counts





Proposed ISFs

Cross Section (Date & Location)	Measured Discharge (cfs)	Bankfull Top Width ¹ (ft)	Winter Flow Recommendation (cfs)	Summer Flow Recommendation (cfs)
Cameron Creek (5/7/21)	1.96	5.7	0.87	0.96
Cameron Creek (9/17/21)	6.38	5.7	0.46	1.17
Proposed ISF Rate:			0.67 cfs (Oct. 1- Apr. 30)	1.1 cfs (May 1- Sep.30)

Water Availability



Physical

- Used a combination of StreamStats and R2Cross to look at physical availability

Water Availability



Legal

- There are no diversions on Cameron Creek
- There is a private instream flow right on Cameron Creek of 12.5 cfs with a priority date of 1910.



Stakeholders

**US Forest
Service**

**Colorado Parks &
Wildlife**

Gunnison County

**The Upper
Gunnison River
Water
Conservancy
District**

Instream Flow Reach	Upper Terminus	Lower Terminus	Total Length (miles)	Land Ownership	
				Private (%)	Public (%)
Cameron Creek	Headwaters originate between Cross Mountain and Cameron Peak	Confluence of Lottis Creek and Cameron Creek	3.7	Riparian Corridor 3%	Riparian Corridor 97%
				Watershed Composition 6%	Watershed Composition 94%

Questions?



Julie Nania
Julie@hccacb.org

