



---

# COLORADO

**Colorado Water  
Conservation Board**  
*Department of Natural Resources*

## **DIRECTOR'S REPORT**

**January 2022**

Interstate Compact Compliance • Watershed Protection • Flood Planning & Mitigation • Stream & Lake Protection  
Water Project Loans & Grants • Water Modeling • Conservation & Drought Planning • Water Supply Planning



# COLORADO

## Colorado Water Conservation Board

Department of Natural Resources

TO: Colorado Water Conservation Board Members

FROM: Rebecca Mitchell  
Anna Porter

DATE: January 24-25, 2022

SUBJECT: **Agenda Item 4b, January 2022 CWCB Board Meeting Director's Report**

---

### TABLE OF CONTENTS

Pg. 4 - STATEWIDE

- CWCB Small Feasibility Grant Fund Update

Pg. 4 - COLORADO RIVER BASIN

- Colorado River Water Use
- Upper Colorado Wild and Scenic Stakeholder Group

Pg. 5 - COLORADO RIVER BASIN

- Upper Colorado Wild and Scenic Stakeholder Group

Pg. 6 - WATER CONSERVATION AND DROUGHT PLANNING UPDATES

- CWCB Water Efficiency Grant Fund Program (WEGF) Update
- Water Efficiency and Drought Plan Updates
- Drought Management Plans
- Water Efficiency Plans

Pg. 7 - WATER CONSERVATION AND DROUGHT PLANNING UPDATES

- Governor's Water Availability Task Force
- Colorado Water Loss Initiative
- Land/Water Planning NEXUS

Pg. 7 - WATERSHED AND FLOOD UPDATES

- Your Own Unique Stream Health Assessment Framework
- Colorado Watershed Restoration Program Update

Pg. 8 - WATERSHED AND FLOOD UPDATES

- Colorado Watershed Restoration Program Update

Pg. 10 - WATERSHED AND FLOOD UPDATES

- Macroinvertebrate Data Collection
- State Recovery Task Force: Marshall Fire
- National Flood Insurance Program, CO State Assessment

Pg. 11 - WATERSHED AND FLOOD UPDATES

- Marshall Fire Watershed Analysis
- Colorado Floodplain and Stormwater Criteria Manual

Pg. 12 - WATERSHED AND FLOOD UPDATES

- Floodplain Rules and Regulations Rulemaking Update
- The Letter of Map Revision (LOMR) Review Partners Program
- January 2022 Risk Mapping, Assessment and Planning (MAP) Project Updates by Major Water Basin

Pg. 17 – WATERSHED AND FLOOD UPDATES

- Multi-Watershed Risk Map Projects
- LiDAR Acquisition

Pg. 19 - WATER SUPPLY PLANNING SECTION UPDATES

- Basin Implementation Plans
- Water Supply Reserve Fund Grants Balance Report

Pg. 20 - WATER SUPPLY PLANNING SECTION UPDATES

- H2B/H2O Water Supply Reserve Fund – Balance Summary

Pg. 21 - WATER SUPPLY PLANNING SECTION UPDATES

- Stimulus Fund (HB1260) – Balance Summary Water Supply Reserve Fund

Pg. 22 - INSTREAM FLOW UPDATES

- Recently Decreed ISF Water Rights

Pg. 23 - INSTREAM FLOW UPDATES

- Administration Actions and Reservoir Releases

Pg. 24 - INSTREAM FLOW ATTACHMENTS

- Instream Flow De Minimis Report

Pg. 25 - INSTREAM FLOW ATTACHMENTS

- Instream Flow and Natural Lake Level Program Summary of Resolved Opposition Cases

Pg. 32 - LOAN PROGRAM ATTACHMENTS

01 - Water Project Loan Program Interest Rates

02 - Prequalified Project List and Loan Prospect Summary

03 - Design and Construction Status Report

04 - Loan Repayment Delinquency Report

05 - Small Project Loan Report (2021 Calendar Year)

## STATEWIDE

### CWCB SMALL FEASIBILITY STUDY GRANT FUND UPDATE:

New grant applications approved:

1. None

Previously approved grants in FY21/22:

1. Twin Lakes Reservoir and Canal Company – Grizzly Dam Rehabilitation (\$49,950)
2. Town of Dove Creek – Reservoir No. 2 (\$7,500)
3. St. Vrain and Left Hand Water District – Copeland Reservoir Lining (\$50,000)

Total funds approved for feasibility study grants in FY21/22: \$107,450

## COLORADO RIVER BASIN

### COLORADO RIVER WATER USE—

2020 Colorado River Storage as of January 18, 2022			
	Elevation (feet above mean sea level)	Storage (MAF)	Percent of Capacity
Lake Mead	1,067.16	8.975	34%
Lake Powell	3,534.22	6.509	27%
Total System Active Storage		21.942	37%
2021 Total Active Storage		27.346	46%
		Flow (MAF)	Percent of Average
Forecasted Unregulated Inflow into Powell (Forecasted Water Year 2022)		8.498	89%

Forecasted CY 2022 Lower Basin Consumptive Use			
State		Use (MAF)	Total (MAF)
Arizona		2.432	
California			
California Agricultural	3.317	4.409	6.572
Metro. Water District	1.075		
Other	0.017		
Nevada		0.243	

\*Note MAF = million acre-feet

**Upper Colorado River Wild and Scenic Stakeholder Group—**

The Upper Colorado Wild and Scenic Stakeholder Group (SG) continues to hold regular meetings and all committees continue to work towards implementing the alternative management plan. A top priority for the January 18<sup>th</sup> quarterly meeting will be approving a channel maintenance flow monitoring plan which is the final piece of the SG plan. The SG is considering incorporation for management of an endowment fund that will be set up when both Northern Water and Denver Water have final permits for the Windy Gap Firming Project and the Gross Reservoir Expansion Project, respectively. The SG is also working cooperatively to better understand and identify potential water acquisitions that could be used to address issues such as low flows and high water temperatures. In addition, the group continues to work on finances and long-term funding strategies, monitoring the outstandingly remarkable values, the annual timeline and upcoming tasks, and general governance of the SG and committees.

## WATER CONSERVATION AND DROUGHT PLANNING UPDATES

### OWCDP Director's Report Items – January 2022

#### CWCB WATER EFFICIENCY GRANT FUND PROGRAM (WEGF) UPDATE:

Per the Board's decision in May 2021 to merge this program into the Water Plan Grant Conservation & Land Use Planning and the Engagement & Innovation category, applications will no longer be accepted through this grant program.

Staff will continue to spend down the funds that remain in the WEGF and update the Board on in-progress grants.

The following are deliverables sent to the CWCB since the last Director's Report:

- **Deutsche Domestic Water Company** – Drought Management Plan – *25% Progress Report*

(Ben Wade)

**WATER EFFICIENCY & DROUGHT PLANS UPDATE:** The Office of Water Conservation & Drought Planning (OWCDP) continues to work with the following providers to approve their Water Efficiency and Drought Management Plans:

#### DROUGHT MANAGEMENT PLANS

##### Approved Plans

No additional Plans have been approved since the last Board meeting.

##### Drought Management Plans in review

- City of Durango

#### WATER EFFICIENCY PLANS

##### Approved Plans

- Pueblo Board of Water Works

The following plans have been given *conditional approval*. CWCB staff will continue to work with these entities until their respective Water Efficiency Plans achieve approval status.

##### Conditional Approval

- **Crested Butte South Metropolitan District**

#### **Water Efficiency Plans in review**

- **Town of Frederick**

**(Kevin Reidy & Ben Wade)**

**GOVERNOR’S WATER AVAILABILITY TASK FORCE:** The next Water Availability Task Force meeting will be held on January 18 from 9:30a-11:30a. Please check the website ([Water Availability & Flood Task Forces | DNR CWCBC \(colorado.gov\)](#)) for additional information. **(Ben Wade)**

**CO WATER LOSS INITIATIVE:** Phase II of the Colorado Water Loss Initiative officially kicked off on September 1, 2021 with open registration. Kevin and the project team has reassembled the advisory group and has added the Colorado Rural Water Association as well as folks from DOLA. On December 14-17, we hosted the first two virtual workshops for beginners and advanced utilities. Due to COVID we have rescheduled any in-person workshops for later on in the Spring and given participants a number of virtual options. As of 12-17-21, we have 66 utilities registered for the program. Kevin and the advisory group will be reaching out to prospective registrants to increase registration. The good news is that almost half of the registered utilities are smaller and more rural in nature which is one of the goals of this phase. During early December Kevin presented the Colorado Water Loss Initiative at the North American Water Loss annual conference comparing Colorado’s approach to that of California and the province of Quebec, Canada. [www.coloradowaterloss.org](http://www.coloradowaterloss.org) **(Kevin Reidy)**

#### **LAND/WATER PLANNING NEXUS:**

- Kevin has been participating on the core planning team for the Denver One Water Plan funded by a water plan grant. The team consists of various Denver city departments, Mile High Flood, Denver Water, Metro Wastewater and the Greenway Foundation. The plan was officially released on October 28, 2021. With the plan complete the core group (now called OWLS, One Water Leaders) will begin the implementation phase and will continue to meet regularly. <https://www.denvergov.org/Government/Agencies-Departments-Offices/Department-of-Transportation-and-Infrastructure/Programs-Services/One-Water>
- The Water and Land Use Planning Alliance has its next meeting in mid-January, 2022 (final date TBD).  
**(Kevin Reidy)**



## **WATERSHED AND FLOOD UPDATES**

### **Your Own Unique Stream Health Assessment Framework**

Stream health assessments are a key component to Stream Management Plans (SMP). CWCB often receives requests to provide prescriptive methodologies in making these assessments. To help with these the Colorado Stream Health Assessment Framework (COSHAF) was created. COSHAF provides a great background in the background and development of a stream health assessment. However, it purposely falls short in providing prescriptive methodologies due to the overwhelming variation in parameters and assessment goals that may or may not be included in an assessment.

To fill this gap and help meet the needs of our diverse stakeholders, CWCB is creating a new guidance workbook to help inform the complex decisions required to understand the combination of different methodologies that could make up a robust stream health assessment. The guidance document is called Your Own Unique Health Assessment Framework (YOUSHAFF). This document will work as a standalone document, but will also be a partner document to COSHAF.

(Steve Reeves)

### **COLORADO WATERSHED RESTORATION PROGRAM UPDATE**

The Colorado Watershed Restoration Program (CWRP) is designed to provide planning and project implementation funding for watershed and stream restoration and protection efforts. The program supports stakeholder driven collaboratives committed to restoring and protecting the ecological processes that connect land and water. The CWRP guidance document and application was approved by the Board in September of 2008. The Board approved revisions to the program in May 2012 and July 2015. The latest revision added Stream Management Plans (SMP) as a specific grant type. Other grant types include Watershed/Stream Restoration, Flood Mitigation, and Monitoring grants.

Since 2008, the program has funded 162 projects with just under \$15 million. This does not include applications chosen or recommended for funding in 2022. Every CWCB dollar contributed to the program has leveraged nearly \$4.00 from other local, state, and federal sources. The CWRP guidance has served as a template for several other grant programs. This includes the 2014 Special Release of the CWCB Colorado Watershed Restoration Program (\$1,925,000), the CWCB Senate Bill 14-179 River Restoration Program (\$2,500,000), the Department of Local Affairs Community Development Block Grant – Disaster Recovery, Watershed Resilience Program (\$25,000,000), and the NRCS – CWCB Emergency Watershed Protection Program (>\$60,000,000).

On January 6, 2022 CWCB staff met to discuss the 18 applications submitted for review in November 2021. Four staff members scored each application. Staff from Colorado Parks and Wildlife and Great Outdoors Colorado also provided comments for each application. Applications requesting less than \$50,000 are approved for funding by the CWCB Director. There are four applications requesting less than \$50,000. The funding approvals for these applications are listed in the table below. Two applications were approved for full funding, one application was approved for partial funding, and one application was not approved for funding. The applicants will be notified of the funding decisions in advance of the January 2022 Board meeting.

Stream Restoration/Flood Mitigation Plans and Projects + Monitoring Grants					
Applicant	Basin	Project	Funding Request	Match Funding	CWCB Funding Awarded
Friends of the Lower Blue River	Co	Climate Change Resiliency Assessment	\$20,000	\$22,400	\$0
Huerfano County	Ark	Cuchara River Corridor Phreatophyte Mitigation Project Phase 1	\$45,000	\$45,000	\$20,000
Mile High Youth Corps	SP	High Line Canal Russian Olive Control and Restoration	\$31,350	\$31,350	\$31,350
			<b>\$96,350</b>	<b>\$98,750</b>	<b>\$51,350</b>
Stream Management Plans					
Applicant	Basin	Project	Funding Request	Match Funding	CWCB Funding Awarded
Animas Watershed Partnership through San Juan Resource Conservation & Development Council	SW	Animas River Stream Management Plan, Phase I	\$33,754	\$48,345	\$48,345
		<b>Total</b>	<b>\$33,754</b>	<b>\$48,345</b>	<b>\$48,345</b>
		<b>Total CWRP Request and Match</b>	<b>\$130,104</b>	<b>\$147,095</b>	<b>\$99,695</b>

(Chris Sturm)

## **Macroinvertebrate Data Collection**

Stream Management Plans have been a priority activity in Colorado as a result of the 2015 Water Plan, which endeavors to set goals and measurable objectives for the future of Colorado's water. River Network and Strategic by Nature compiled a 5-year memo, "The Stream Management Plans in Colorado: Progress at Five Years." This memo outlined the progress, as well as the challenges, that the SMP effort has encountered in the last several years. One of those challenges is the access that local communities have to necessary and optimal data for quality decision making, which is often not available within the allotted assessment timeframe or budget. We are attempting to fill this gap to the extent possible, by expanding statewide data collection, giving local communities a leg up in beginning their SMP efforts.

In speaking with experts familiar with the SMP process and statewide data collection efforts, we have decided to focus our effort on macroinvertebrate data collection. This parameter can often be costly for small communities because the analysis is quite expensive. We are working with RiverWatch to determine where in the state this type of data is extensive and readily available and where we can focus our efforts to expand coverage throughout Colorado. Our hope is that we can engage RiverWatch, which is great at leveraging volunteer hours, to partner with the Environmental Protection Agency, who regularly collects data for other entities and state agencies at little to no cost, to expand their coverage of data collection of macroinvertebrates throughout the state of Colorado and provide local communities with a valuable parameter that can help inform water quality and aquatic habitat.

(Andrea Harbin Monahan)

## **State Recovery Task Force: Marshall Fire**

The State Recovery Task Force was activated on January 1, 2022, in response to the Marshall Fire in Boulder County and its impacted communities of Superior and Louisville. This office is actively participating in the recovery and mitigation efforts of this task force by attending daily meetings, providing technical information regarding Flood After Fire (FAF), and coordinating with FEMA Region VIII FAF and Floodplain Management, Mitigation, & Insurance (FM&I) staff.

This office is in communication with the designated Floodplain Administrators of Boulder County, Superior, and Louisville. We have and will continue to provide guidance to these communities in regards to assessing substantial damage to structures in the regulatory Special Flood Hazard Area (SFHA), debris management, and flood risk. Additionally, FAF and other pertinent fact sheets/documents have been provided to the community Floodplain Administrators for distribution to their residents.

## **National Flood Insurance Program, CO State Assessment**

FEMA's summary of findings letter following their review of the state's NFIP self-assessment was sent to Gov. Polis on December 6, 2021. Of the four criteria evaluated, FEMA is recommending improvement in two - demonstration of clear land use authority and permitting/compliance tracking of state-owned/managed property in the Special Flood Hazard Area.

A subgroup committee with members from CWCB, COAG, CO Office of Risk Management, & DNR has been formed to investigate courses of action in addressing FEMA's comments. This office is also working closely with FEMA Region VIII as this activity progresses. It is understood by all parties that this

will be a multi-year effort. It is our goal to ensure the state remains in good standing as a participating community in the NFIP.

(Doug Mahan)

### **Marshall Fire Watershed Analysis**

As part of the recovery effort for the Marshall Fire, the State Recovery Task Force has asked for a Burned Area Emergency Response (BAER) effort to be mobilized. Traditionally, following a wildfire on USFS lands, a USFS team will address the BAER analysis, which includes a spatial assessment of the soil burn severity as well as an estimate of future hazards, such as debris flows. Because the Marshall Fire did not occur on federal lands, there was no initial effort to perform this analysis. For this reason, the State Recovery Task Force (SRTF) has asked for a state-led effort to accomplish this analysis. Angela Boag of the DNR Executive Director's Office has been tasked with leading this effort.

The Marshall Fire was a very unique event that significantly differed from most other large Colorado wildfires. There was a fair amount of agreement among team members from the outset that because this occurred in a grassland environment, rather than a forest environment, that quick recovery is expected and the usual increased hazards such as flooding and debris flows may not come to fruition. However, in conversations with local stakeholders, the team has determined that enough concerns exist at the local level to warrant moving forward with the analysis. Results from this analysis will be used to determine if enhanced post-wildfire hazards exist, if physical projects are needed to help speed watershed recovery, and can be used as a demonstration project to determine how to proceed if future similar disasters occur outside of forested areas.

This situation continues to develop on a daily basis. As of January 12, there are indicators that federal agencies may be willing and able to perform this analysis for the State, but this is still a work in progress.

(Kevin Houck)

### **Colorado Floodplain and Stormwater Criteria Manual**

CWCB staff are working with the Steering Committee on revising the Statewide Floodplain and Stormwater Criteria Manual (Criteria Manual). Drafts of the updated Phase 1 Criteria Manual sections, and are estimated to undergo an initial review by the Steering Committee during January and February. The Phase 1 update is focused on creating guidance that better aligns with recent federal and industry standards and information to help communities manage floodplain and stormwater projects. A subsequent update will also explore revisions to align with Colorado's watershed protection and management program updates (Phase 2). The Phase 2 is expected to get underway in June. Several opportunities for Phase 1 engagement will be scheduled in spring 2022, which will be posted to the CWCB website as details become available.

## **Floodplain Rules and Regulations Rulemaking Update**

The final adopted Rules and Regulations for Regulatory Floodplains in Colorado were published in the Colorado Register on December 25, 2021. The final Rules will officially be effective January 14, 2022.

### **The Letter of Map Revision (LOMR) Review Partners Program**

The CWCB LOMR Review Partners Program is continuing. Staff has been able to work with applicants, communities and the Federal Emergency Management Agency (FEMA) to answer questions, provide guidance, and work through complex issues for both ongoing and upcoming map revision requests. Through these cases we process revisions to modify flood hazard information on Flood Insurance Rate Maps (FIRMs). We have 30 cases in process with 16 active cases ongoing in Jefferson, Weld, El Paso, Boulder, Summit, Gilpin, Larimer, Prowers, and Elbert Counties.

---

### **January 2022 Risk Mapping, Assessment and Planning (MAP) Project Updates by Major Water Basin**

CWCB is FEMA's Cooperating Technical Partner (CTP) for the state while Mile High Flood District (MHFD) is the CTP within their service area (Denver Metropolitan Area). CWCB provides support for and coordination with MHFD on projects and data sharing for communities that extend across common boundaries.

**North Platte** – No work being conducted in this area.

**South Platte** – Park, Gilpin, Boulder, Larimer, Weld, and Logan Counties have ongoing Risk MAP studies. Ongoing CWCB studies within the South Platte basin are as follows:

- Phillips County Phases 2-3: Floodplain Mapping approval just came in. Will follow with Resilience Meeting and Digital Flood Insurance Rate Map (DFIRM) production. Issuance of preliminary products anticipated for summer 2022.
- Base Level Engineering (BLE): BLE is a large-scale, automated approach to developing draft approximate (Zone A) flood risk datasets and floodplains in order to provide communities with an initial overview of the potential flood hazard at the local level. These datasets provide communities with best available information relative to flood hazard to assist with planning, risk awareness, and emergency management. Final BLE results meet FEMA requirements for Zone A floodplains; however, not all of the BLE results will become regulatory products.
  - o Park County: Staff held a Discovery meeting on 11/9/2021 to present the BLE results to the communities and obtain initial feedback. Communities are currently reviewing the datasets and information to provide input. Follow-up will occur in February 2022.
  - o Logan County: Countywide BLE modeling is almost complete, and is undergoing internal Quality Control (QC). A Discovery meeting is anticipated for late January/early Feb 2022, and will coincide with FEMA's technical review of the BLE information. FEMA has notified the

County that unless National Flood Insurance Program (NFIP) deficiencies are addressed by March 30, 2022, the County will become a probationary community. CWCB Risk MAP efforts will coordinate closely with Floodplain Regulation regarding any probation implications.

- Morgan, Adams, and Arapahoe Counties: LiDAR won't be available until late January 2022, so we cannot fully complete modeling until at least summer of next year. Modeling is underway for the other basins for which we do have LiDAR data, and will go to internal QC soon.
- Colorado Hazard Mapping Program (CHAMP) Physical Map Revisions: The CWCB was able to leverage funds from FEMA to continue several CHAMP studies through the FEMA regulatory process. CHAMP involved analyzing streams across seven counties in central and northeast Colorado and includes over 200 FIRM panel updates. The remaining counties being completed include Boulder, Gilpin, Weld, and Larimer.
  - Boulder County: This partial countywide Physical Map Revision (PMR) project was transferred to the FEMA Production and Technical Services (PTS) team for the post-preliminary processing phase. Our team continues to coordinate with the PTS and FEMA Region to provide updates to impacted communities relative to the uncertain completion schedule. All but one appeal received during the second appeal period has been resolved. The outstanding appeal requires consideration by a FEMA Scientific Review Panel (SRP) for resolution. Once the SRP is assembled, there is a 90-day period for them to determine an outcome. Unfortunately, the SRP has not yet assembled. The impact has been a delayed issuance of the Letter of Final Determination for all PMR FIRM panels and products. In the meantime, the project is on hold.
  - Gilpin County: The Letter of Final Determination (LFD) was issued on 10/6/2021 as scheduled. New flood hazard maps will go effective in April 2022. This project was transferred to the FEMA (PTS) team for the post-preliminary processing. Our team continues to coordinate with the PTS and FEMA Region to provide community updates based on their corresponding schedule.
  - Weld County: This project was transferred to the FEMA PTS team for post-preliminary processing. Our team continues to coordinate with the PTS and FEMA Region to provide communities updates based on their corresponding schedule. The revised preliminary distribution is expected to occur on 2/23/2022. CWCB will assist impacted communities with additional outreach efforts as requested.
  - Larimer County: Revised preliminary map panels went out on 12/20/2021, and are currently under review by impacted communities. CWCB will assist communities with additional outreach and risk communication regarding any revisions that have occurred.

**Colorado** – Mesa, Eagle, Summit, and Garfield Counties have ongoing Risk MAP studies:

- Flood Risk Information System (Mesa County): We are expecting to review and provide feedback on the draft website for this pilot Flood Risk Information System (FRIS) project by the end of January. Then, we'll meet with the communities in Mesa County to showcase the system and obtain additional input before making the site live.
- City of Grand Junction Levee (Mesa County): Levee assessment reporting has been completed and we met with the City to review the preliminary assessment results and discuss options for addressing the levee as the Risk MAP study moves forward. The City is currently coordinating with CWCB' team, FEMA and the USACE on required levee improvements.
- Eagle County Physical Map Revision Phases 2-3: The 30-day community review/comment period after the preliminary product distribution ended on 10/24/2021. An error using a 0.5-foot floodway in the hydraulic modeling and corresponding flood hazard mapping along the Roaring Fork River requires revisions for the Town of Basalt and portions of unincorporated Eagle County. Both communities have adopted a zero-rise floodway. Our team will need to update the modeling and mapping to accommodate the higher standard. These changes will require the issuance and distribution of revised products later this year.
- Garfield County Phase 2-3: We expanded the scope of work for data development (as requested by communities) in 2021. Work on the additional flooding sources has started, and associated field survey activities are underway.

**Gunnison** – Delta, Gunnison, Hinsdale, and Ouray Counties have ongoing studies:

- Delta County Phase 2-3. Hydraulic modeling was approved by FEMA, and the floodplain mapping is underway.
- Ouray County: We anticipate the Risk MAP preliminary product distribution will occur on 2/17/2022. Communities had reviewed and commented on the draft datasets prior to development of preliminary products.
- Hinsdale and Gunnison Countywide BLE: While ongoing studies are updating flood risk information and floodplain mapping for some flooding sources in portions of the counties (described under the Upper Gunnison Watershed project below), a countywide BLE effort is taking place for both Hinsdale and Gunnison Counties. We are still producing BLE hydraulic modeling and expect to have information ready for a Discovery meeting with communities in early 2022.
- Upper Gunnison Watershed Phases 2-3: This project is being continued under new grants (since the original FY15 grant), part of which are covered by state funds such as the Hinsdale County Partial Countywide Revision.
  - o Hinsdale County: Floodplain mapping for the flooding sources was approved by FEMA, Resilience meetings were held with communities. Distribution of preliminary products is anticipated for spring 2022.

- Gunnison County: Gunnison River and Coal Creek hydraulic modeling has been updated to incorporate additional community datasets to produce more refined modeling and draft floodplain mapping. We will hold meetings with the communities (Flood Risk Review) in January or February 2022.

**Rio Grande** – Costilla and Mineral Counties have ongoing studies:

- Costilla County: We received approval from FEMA to move forward after the preliminary product distribution as previously expected. We are expecting to hold the Consultation Coordination Officer (CCO) and Public Meetings in late January 2022. There are still a few effective Zone A reaches that did not get re-studied in locations where there was no high-resolution LiDAR. Effective flood hazard information for these areas is still on paper maps, but will be updated with a LOMR once high-resolution LiDAR becomes available in early 2022.
- Mineral County: There is an ongoing LOMR to revise Willow Creek flood hazard mapping and obtain levee certification for the existing levee within the City of Creede. Once the LOMR becomes effective, the effective FIRM will reflect flood protection of the City due to the accredited levee. The Physical Map Revision (PMR) floodplain mapping was approved. We will hold a Resilience meeting (virtually) with the communities on 1/11/2022 and the preliminary product distribution is expected to happen in spring 2022.

**Arkansas** – Lake, Chaffee, Custer, Fremont, Pueblo, Teller, El Paso, Huerfano, Las Animas, Otero, Bent, and Prowers Counties have ongoing studies:

- Lake and Chaffee BLE: Lake's and Chaffee's BLE submittals have been approved by FEMA. The Lake County project will be moving forward with FY21 FEMA funding to comply with community-requested hydraulic modeling and floodplain mapping for an additional flooding source in Leadville.
- Custer and Fremont BLE: Custer's BLE analysis is complete and we anticipate a Discovery meeting in late January. Fremont data development (Phase 2) work is underway, with the collection of field survey.
- Pueblo County BLE: Work on hydraulic modeling continues. We expect to have the Discovery meeting in early 2022.
- Huerfano Phase 2: Data development ongoing with survey efforts underway.
- Bent and Otero BLE (including the CHAMP 3 Phase 2 scope of work): The hydraulics submittal was approved, so we are moving forward with floodplain mapping.
- City of Las Animas (Bent County) Pre-Levee: The preliminary levee assessment reporting has been completed and results shared with the City. Our team is working with the City to determine how to account for the levee in the Risk MAP project. The City is currently coordinating with CWCB, FEMA and the USACE on required levee improvements.
- El Paso BLE/Phase 2 and Templeton Gap (T-Gap) pre-levee work: Hydrology and most surveying for data development (Phase 2) is wrapping up. El Paso County scoping issues have been



resolved and a grant amendment for shifting existing funding to accommodate additional study reaches requested by the County is underway with FEMA.

- Teller County BLE/Phase 2: Still working on hydraulics. We will hold the Flood Risk Review meeting likely in early 2022, and the formal floodplain mapping task will be submitted to FEMA for review shortly afterwards. The project has been delayed while troubleshooting technical issues to comply with FEMA's updated technical guidance and standards.
- Las Animas County Phase 2: Data development (Phase 2) scope of work being finalized via Memorandums of Agreement (MOAs).
- Prowers County Phase 2: Data development tasks have started with field survey data collection underway.
- Towns of Granada/Holly/Lamar (Prowers County) Pre-Levee assessments: Follow up meetings with the communities to review and discuss the preliminary levee assessment results for each community. Coordination is underway on how to move forward with various levee options for integration into the floodplain mapping work. Holly and Granada have chosen to complete certification packages and accredit their levee systems. Lamar will follow the Levee Analysis and Mapping Procedure (LAMP) route as it works toward improvements and required plans to provide levee protection from flood events.
- Arkansas River Hydrology: FEMA approved the revised hydrology along the Arkansas River, and this project is now closed. Will remove for next Director's Report updates.

**Yampa/White** –Moffat County has an ongoing Risk Map study:

- Upper White Watershed/Rio Blanco County: The revised flood hazard mapping became effective on December 2, 2021. This project will be removed for the next Director's Report.
- Moffat County: Risk MAP hydrology approved by FEMA and the hydraulics modeling is being revised to address comments received. Floodplain mapping is underway and deliverables will be submitted in the near future. Preliminary products are expected to be issued sometime in May 2022.

**San Miguel/Dolores/Animas/San Juan** – La Plata, Dolores, Montezuma, Archuleta, San Juan, and the southern parts of Hinsdale and Mineral Counties, along with the Southern Ute Tribal nation, have ongoing studies:

- Animas Watershed Phases 3-4: San Juan/Archuleta were published in the December Federal Register. The mandatory appeal period is anticipated to begin in late February. La Plata Federal Register request was revised to address comments. La Plata's appeal start date depends on when the Federal Register notice publishes.
- Southwest Colorado (Montezuma, Dolores, San Juan, La Plata, Archuleta, Hinsdale, and Mineral Counties) BLE: Countywide BLE data development is almost complete. Targeting holding Discovery meetings in early 2022.

## Multi-Watershed Risk Map Projects:

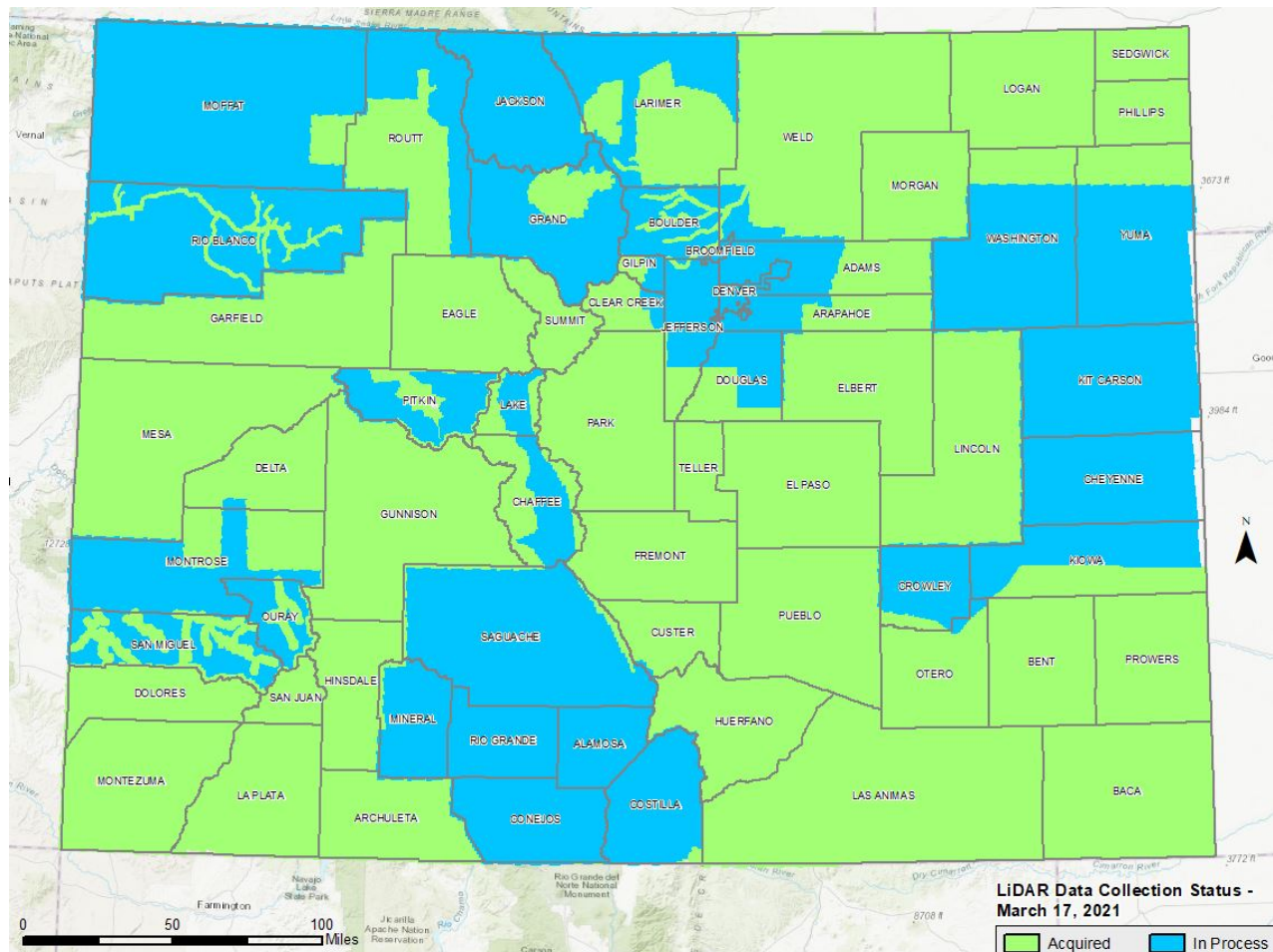
- Elbert County BLE: We are planning to hold the Discovery meeting in early 2022.
- Mesa County Phase 2: Hydrology analyses are almost complete for the countywide effort. Then we will move forward with detailed hydraulic modeling. Finishing up obtaining community concurrence on additional study streams requested and modeling methodologies.
- Colorado Hazard Mapping Program (CHAMP) Phase 3: This set of studies originated from the Colorado Senate Bill (15-245) which was put forth as a response to the destructive 2013 floods. This bill released funding to better assess and map various flood related hazards, including debris flows and erosion, throughout Colorado. As such, CWCB funded a paper inventory reduction effort through various counties across the state that were still using old paper floodplain maps and needed updated flood risk information, especially if they were affected by these floods and the local conditions were clearly changed. Several county projects that were scoped as part of this CHAMP effort are still ongoing, including the ones listed below.
  - o San Miguel County: This partial countywide project is still on hold pending as-built data for the completed phases of the Valley Floor Restoration project in the Town of Telluride. The Town is going to submit a LOMR for these improvements based on the effective mapping. The mapping project will require revised modeling and mapping of this area using the updated hydrology and hydraulic modeling with the as-built information. There will be additional outreach and coordination with impacted communities in San Juan County due to the significant project delay. Then preliminary products will be developed.
  - o Lincoln County Phases 2-3: Hydraulics and floodplain mapping for limited flooding sources have been approved by FEMA, so we are expecting to move forward with a Resilience meeting. Preliminary products are anticipated to be developed and distributed over the next few months.
  - o Saguache County: This project requires developing alluvial fan modeling for the Town of Crestone area due to the complicated terrain and flooding patterns. Once this analysis is completed, the project can continue moving forward with the preliminary product development and distribution. FEMA FY21 grant funding is supporting this project that will begin later this month.

**LiDAR acquisition:** CWCB received \$3.4 million in a FEMA FY16 grant and \$2.2 million in FY18 for LiDAR acquisition in Colorado for future floodplain mapping and hazard assessment projects.

- LiDAR collection tasks that were recently completed included the Southwest CO data collection, led by the USGS. The rest of the state LiDAR is currently being acquired and going through final USGS QA-QC through 2022. This will also include the DRCOG LiDAR project (for the Denver Metro Area data collection).
  - DRCOG area LiDAR will be finalized and delivered by January/February 2022.
  - San Luis Valley/San Miguel/Pitkin County area LiDAR - Final deliverables are in the works with USGS and could be in to The National Map by early 2022.

- Eastern CO Plains: As of 12/27/2021, parts of this project have been uploaded by USGS to The National Map. We are working to obtain finalized copies.
- Northwest CO Project: USGS likely won't have the final deliverables for this project area until spring of 2022.

Below is the most recent status map for LiDAR data acquired in Colorado (no change since the March 2021 map update):



(Terri Fead and Marta Blanco Castano)

## **WATER SUPPLY PLANNING SECTION UPDATES**

The basin roundtables are putting the final touches on their Basin Implementation Plans. Those plans will be completed at the end of January. We appreciate the work of the roundtables and are excited to build off them as we develop the Water Plan update. Currently, staff continue to work on drafting the Water Plan and have been working hard to strategize the features of the plan, including working with sister agencies to think through opportunities to work together on water plan actions. A board workshop covering some of these key elements of the Water Plan will follow the second day of the board meeting to provide insight into the direction of the Water Plan update as it now stands. The Water Supply Planning team continues to make conservation and efficiency efforts led by their team a priority. To that end, the number of staff working on this issue has doubled recently, and new efforts are ongoing to update the state's 1051 database to gather critical conservation programs and water use data. Finally, the water supply planning team has been working on preparing for the final meeting of the Water Equity Task Force on February 2. This meeting will conclude the Task Force's mission to develop guiding principles on equity, diversity, and inclusion to inform the Water Plan.

### **WATER SUPPLY RESERVE FUND GRANTS BALANCE REPORT:**

Attached are the balance summaries for each basin following the November 2021 Board meeting.

- WSRF/H2BH2O 2006-Present Balance
- HB 1260 Stimulus Funding Balance

To provide the Board updates on the status of specific Water Supply Reserve Fund grant applications and projects, staff can provide a status report of the following information upon request:

- List of completed WSRF projects;
- List of WSRF projects in progress; and
- List of WSRF projects in the contracting and procurement process.

**COLORADO WATER CONSERVATION BOARD**  
**H2B/H2O Water Supply Reserve Fund - Balance Summary**  
**JANUARY 2022**

Updated 01/10/22

<b>Fund Appropriation and Receipts</b>				
<b>Fiscal Year</b>	<b>Legislative Appropriation</b>	<b>Funds Received</b>	<b>Statewide Account</b>	<b>Basin Account</b>
2006/2007	\$10,000,000	\$10,000,000	\$5,500,000	\$4,500,000
2007/2008	\$6,000,000	\$6,000,000	\$4,200,000	\$1,800,000
2008/2009	\$10,000,000	\$7,000,000	\$4,300,000	\$2,700,000
2009/2010	\$5,775,000	\$5,775,000	\$4,215,750	\$1,559,250
2010/2011	\$6,000,000	\$6,000,000	\$4,380,000	\$1,620,000
2011/2012	\$7,000,000	\$7,000,000	\$4,732,000	\$2,268,000
2012/2013	\$10,000,000	\$7,157,724	\$4,580,943	\$2,576,781
2013/2014	\$10,000,000	\$10,091,639	\$6,458,649	\$3,632,990
2014/2015	\$10,000,000	\$10,000,000	\$6,400,000	\$3,600,000
2015/2016	\$10,000,000	\$9,103,590	\$5,826,298	\$3,277,292
2016/2017 (FY2017)	\$0	\$0	\$0	\$0
2017/2018 (FY2018)	\$10,000,000	\$1,455,776	\$931,697	\$524,079
2017/2018 CF (FY2018)	\$0	\$7,000,000	\$4,480,000	\$2,520,000
2018/2019 CF (FY2019)	\$0	\$3,544,884	\$2,268,728	\$1,276,158
2019/2020 (FY2020)	\$10,000,000	\$10,000,000	\$6,400,000	\$3,600,000
2020/2021 (FY2021)	\$2,500,000	\$2,500,000	\$1,600,000	\$900,000
Interest	N/A	\$2,857,935	\$3,541,544	
(Prior Years Interest Adjustment 2007-2014 and FY2015, FY2016, FY2017)				
FY 2018 Interest	N/A	\$ 376,467	\$376,467	\$0
FY 2019 Interest	N/A	\$ 431,589	\$431,589	\$0
FY 2020 Interest	N/A	\$ 558,732	\$558,732	\$0
FY 2021 Interest	N/A	\$ 329,821	\$329,821	\$0
<b>TOTAL</b>	<b>\$107,275,000</b>	<b>\$107,183,157</b>	<b>\$71,512,216</b>	<b>\$36,354,551</b>

Note: The WSRF is a Severance Tax "Tier II" program & CF Funding with 40% of funds distributed on July 1, 30% on January 1, and the final 30% on April 1. In FY 2008/2009 the final 30% installment of \$3,000,000 was not received due to the State's budgetary shortfall.

In January 2012 interest for the program from its inception to date was credited directly to the Statewide Account.

Interest from January 2012 on is regularly calculated by the Treasury and credited to the Statewide Account.

<b>Fund Distribution</b>					
<b>Basin</b>	<b>Approved Basin Grants</b>	<b>Total Basin Funds</b>	<b>Basin Account Balance</b>	<b>Approved State Grants</b>	<b>Statewide Account Balance</b>
Arkansas	\$3,612,149	\$4,039,395	\$427,246	\$ 12,737,703	
Colorado*	\$3,748,529	\$4,039,395	\$290,866	\$ 6,611,075	
Southwest *	\$3,626,892	\$4,039,395	\$412,503	\$ 8,929,463	
Gunnison *	\$3,676,957	\$4,039,395	\$362,438	\$ 6,870,607	
Metro *	\$3,367,301	\$4,039,395	\$672,094	\$ 7,723,032	
North Platte	\$3,470,767	\$4,039,395	\$568,627	\$ 842,844	
Rio Grande*	\$3,788,048	\$4,039,395	\$251,347	\$13,104,635	
South Platte *	\$3,533,530	\$4,039,395	\$505,865	\$ 8,075,127	
Yampa/White	\$3,345,904	\$4,039,395	\$693,490	\$ 1,063,969	
<b>TOTAL</b>	<b>\$32,170,078</b>	<b>\$36,354,551</b>	<b>\$4,184,477</b>	<b>\$65,958,454</b>	<b>\$5,553,762</b>
<b>TOTAL APPROVED GRANTS</b>					<b>\$68,128,531</b>

Note: Only includes grants approved by CWCB

\* Comments reflect adjustments to balances

**COLORADO WATER CONSERVATION BOARD**  
**STIMULUS FUND (HB1260) - Balance Summary Water Supply Reserve Fund**  
**JANUARY 2022**

Updated 1/10/22

<b>Fund Appropriation and Receipts</b>				
	Legislative		Statewide	
Fiscal Year	Appropriation	Funds Received	Account	Basin Account
FY2021-2022	\$5,000,000	\$5,000,000	\$3,200,000	\$1,800,000
<b>TOTAL</b>	<b>\$5,000,000</b>	<b>\$5,000,000</b>	<b>\$3,200,000</b>	<b>\$1,800,000</b>

<b>Fund Distribution</b>					
Basin	Approved Basin Grants	Total Basin Funds	Basin Account Balance	Approved State Grants	Statewide Account Balance
Arkansas	\$32,500	\$200,000	\$167,500	\$43,000	
Colorado	\$19,800	\$200,000	\$180,200	\$40,000	
Southwest	\$8,600	\$200,000	\$191,400	\$0	
Gunnison	\$69,500	\$200,000	\$130,500	\$49,833	
Metro	\$37,500	\$200,000	\$162,500	\$91,500	
North Platte	\$200,000	\$200,000	\$0	\$4,833	
Rio Grande	\$0	\$200,000	\$200,000	\$0	
South Platte	\$50,750	\$200,000	\$149,250	\$70,458	
Yampa/White	\$172,750	\$200,000	\$27,250	\$66,000	
<b>TOTAL</b>	<b>\$591,400</b>	<b>\$1,800,000</b>	<b>\$1,208,600</b>	<b>\$365,624</b>	<b>\$2,834,376</b>
<b>TOTAL APPROVED GRANTS</b>					<b>\$957,024</b>

Note: Only includes grants approved by CWCB

## INSTREAM FLOW UPDATES

**RECENTLY DECREED ISF WATER RIGHTS:** On December 30, 2021, the Division 6 Water Court decreed instream flow (ISF) water rights to the CWCB on a reach of Trout Creek in Case No. 20CW3055 for 1.1 cfs (11/01-03/31), 5.7 cfs (04/01-06/30), and 5.0 cfs (07/01–10/31), with an appropriation date of January 29, 2019. These water rights are in addition to an existing ISF decreed on Trout Creek in Case No. W-1338-77, in the amount of 5.0 cfs (01/01–12/31). The upstream terminus of the newly decreed ISF is the confluence with an unnamed tributary, and the lower terminus is the Koll Ditch headgate. This reach is approximately 6.64 miles long and flows in an easterly direction through parts of Routt County. Terms and conditions were included in this decree for the Knott and Livestock Company, LLC., and Twentymile Coal LLC. The Bureau of Land Management recommended an ISF increase on this reach of Trout Creek to protect the diverse and self-sustaining fish community. Trout Creek provides habitat for brook trout, brown trout, cutthroat trout, mottled sculpin, speckled dace, and mountain sucker.

### Requests for Administration of Instream Flow Water Rights

In the 2021 water year, staff investigated low flow alerts from the satellite monitoring system and placed seven formal requests for administration, identified in the table below. The Division Engineer worked to enforce the calls through curtailment of junior water rights or undecreed uses, limiting water rights to decreed rates, through implementation of augmentation plans, and denying junior exchanges. The call letters and detailed information on the Board's rights that were administered can be found on the CWCB's web page at: <https://cwcb.colorado.gov/instream-flow-administrative-calls>

Stream Name	Water Division	Case Number(s)	Date(s) of Formal Call	Amount (cfs)/ (dates)	Termini
Beaver Creek	5	75W2719	8/5/2021	4 (10/1 – 4/30) 12 (5/1 – 9/30)	UT: outlet Beaver Lake LT: confl Eagle River
Crystal River	5	75W2720	8/10/2021 9/1/2021	60 (10/1 – 4/30) 100 (5/1 – 9/30)	UT: confl Avalanche Creek LT: confl Roaring Fork River
Crystal River	5	75W2721	8/10/2021 9/1/2021	40 (10/1 – 4/30) 80 (5/1 – 9/30)	UT: confl Carbonate Creek LT: confl Avalanche Creek
Roaring Fork River	5	76W2948	8/12/2021	32 (1/1 – 12/31)	UT: confl Difficult Creek LT: confl Maroon Creek
Cross Creek	5	78W3795	8/14/2021	8 (10/1 – 4/30) 20 (5/1 – 9/30)	UT: confl E Cross Creek LT: confl Eagle River
Slater River	6	17CW3030	8/15/2021	16 (10/16 – 3/15) 25 (3/16 – 4/15) 74 (4/16 – 6/30) 25 (7/1 – 7/15) 10 (7/16 – 7/31) 6.5 (8/1 – 9/15) 8.5 (9/16 – 10/15)	UT: confl Beaver Creek LT: USGS Gage #09255000
Slate River	4	80CW0092	8/16/2021	12 (12/1 – 3/31) 23 (4/1 – 11/30)	UT: confl Coal Creek LT: confl East River

### Other actions to improve instream flow conditions

In 2021, CWCB implemented several reservoir releases through short and long term ISF acquisition projects to maintain and improve streamflow conditions throughout the state. The CWCB also worked with Colorado Parks and Wildlife (CPW), to coordinate additional releases from CPW owned reservoirs in order to improve flows. A list of CWCB and CPW 2021 reservoir releases to improve ISF conditions is shown in the table below:

Reservoir	Released Amount (AF)	Benefitting Stream
Lake Avery	908	White River
Lake San Cristobal	200	Lake Fork Gunnison River
Ruedi Reservoir	2,850	Colorado River (15-mile reach)
Ruedi Reservoir	3,500	Fryingpan River
Silverjack Reservoir	1,551	Cimarron River
Terrace Reservoir	442	Alamosa River



## INSTREAM FLOW ATTACHMENTS

### Director's Report Attachment – January 24-25, 2022 CWCB Meeting Stream and Lake Protection Section De Minimis Cases

The following table summarizes applications that have the potential to injure the Board's instream flow water rights, but the impact is considered de minimis. In these cases, the cumulative impact to the Board's right is less than 1%. Pursuant to ISF Rule 8(e) (the de minimis rule), staff has not filed a Statement of Opposition in these cases and has provided the required notification to the Division Engineers and applicants.

Applicant Case No.	Water Div.	Applicant	Stream name/ CWCB Case No.	ISF Amount (cfs)	Individual Injury (%)	Cumulative Injury (%)	Count
21CW3123	5	Winter Park Town of	Colorado River 80CW0447	90 (1/1 - 12/31)	0.00260 0.00260	0.20578 0.13994	46
			Colorado River 80CW0448	150 (1/1 - 12/31)	0.00160 0.00160	0.13727 0.09605	49
			Crooked Creek 90CW0296	2.75 (10/1 - 4/14) 8 (4/15 - 8/14) 4 (8/15 - 9/30)	0.02950 0.08570	0.98803 0.92473	13
			Crooked Creek 90CW0301	6 (4/15 - 8/14) 1.5 (8/15 - 4/14)	0.03930 0.15710	0.39565 0.96764	7
			Fraser River 90CW308B	30 (5/15 - 9/15) 19 (9/16 - 5/14)	0.00790 0.01240	0.03587 0.03969	15

**January 24-25, 2022 Board Meeting  
Instream Flow and Natural Lake Level Program  
Summary of Resolved Legal Protection Cases**

The Board's Instream Flow ("ISF") Rule 8i(1) states:

In the event the pretrial resolution includes terms and conditions preventing injury or interference and does not involve a modification, or acceptance of injury or interference with mitigation, the Board is not required to review and ratify the pretrial resolution. Staff may authorize its counsel to sign any court documents necessary to finalize this type of pretrial resolution without Board ratification.

Staff has resolved issues of potential injury in the following water court cases, using two different mechanisms. Staff: (A) stipulated in three cases in which CWCB had filed a Statement of Opposition; and (B) obtained agreements via letters-in-lieu of filing Statements of Opposition in four cases; and (C) sent a courtesy notice letter in one case to the Division Engineer's Office to point out potential exemptions pursuant to §§37-92-102(3)(b) and 37-92-502(2)(c) C.R.S. (2021).

**A. STATEMENTS OF OPPOSITION**

**(1) Case No. 18CW3223 (Water Division 5) - Application of Winter Park Recreational Association**

The Board ratified this Statement of Opposition at its March 2019 meeting. Applicant sought a change of water right, alternate point of diversion, plan of augmentation, and conditional rights of substitution and exchange. Staff, in cooperation with the Attorney General's Office, has negotiated a settlement to ensure that the CWCB's instream flow water rights will not be injured.

The CWCB holds interests in acquired water rights on the Fraser River Basin, pursuant to Case No. 11CW152, as well as appropriated instream flow water rights in the Colorado Headwaters watershed that could have been injured by this application, including the following:

Appropriated Instream Flow Water Rights:

<b>Case Number</b>	<b>Stream</b>	<b>Upper Terminus</b>	<b>Lower Terminus</b>	<b>CFS Rate (Dates)</b>	<b>Approp. Date</b>
90CW0302, 90CW0307, 90CW0308, 90CW0315	Fraser River	confl Jim Creek	confl Colorado River	8-30 (5/15 - 9/15) 3.5-19 (9/16 - 5/14)	11/27/1990

In addition to standard terms regarding measuring devices, accounting and retained jurisdiction, the Applicant has agreed to the following additional protective terms and conditions:

- "Diversion of snowmaking water at the FRPPL, but not diversions of snowmaking return flows, shall not exceed the measured deliveries or releases from Denver Water's Fraser River Diversion Project,

less transit losses as calculated by the Division Engineer. The Applicant shall not take delivery of water originating from Denver Water's diversion from Jim Creek until construction of the Jim Creek Bypass and Pipeline is complete and associated measuring devices have been installed."

- "The Applicant shall not divert at the FRPPL any other water Denver Water releases or bypasses to the Fraser River for (1) delivery to any entity other than the Applicant or (2) for any purpose other than delivery of water to the Applicant."
- "WPRA shall not operate the Snowmaking Return Flow Exchange at times when the flow in the Fraser River at the Fraser River at Winter Park Gage (USGS 09024000) is less than 8 cfs during the period May 15 through September 15, and 3.5 cfs during the period September 16 through May 14, which are the CWCB instream flow rates in the Fraser River decreed in Case No. 90CW302."

## **(2) Case No. 20CW3139 (Water Division 5) - Application of Upper Midnight LLC**

The Board ratified this Statement of Opposition at its March 2021 meeting. Applicant requested a change for water rights and approval of plan for augmentation and exchange. A 4-day trial is set for March 14, 2022. The case remains open before the water court judge. Applicant filed a Motion to Vacate Trial with the Court on December 29, 2021. The Order is pending. Staff, in cooperation with the Attorney General's Office, has negotiated a settlement to ensure that the CWCB's instream flow water rights will not be injured.

The CWCB holds acquired water rights in the Stapleton Brother's Ditch, as changed in case No. 10CW184, as well as appropriated instream flow water rights in the Roaring Fork watershed that could have been injured by this application, including the following:

### **Appropriated ISF Water Rights:**

Case Number	Stream	Upper Terminus	Lower Terminus	CFS Rate (Dates)	Approp. Date
W-2947(1976)	Castle Creek	headwaters	confl Roaring Fork River	12 (1/1 - 12/31)	01/14/1976
W-2948(1976)	Roaring Fork River	confl Difficult Creek	confl Maroon Creek	32 (1/1 - 12/31)	01/14/1976
85CW0646	Roaring Fork River	confl Maroon Creek	confl Fryingpan River	30 (10/1 - 3/31) 55 (4/1 - 9/30)	11/08/1985
85CW0639	Roaring Fork River	confl Fryingpan River	confl Crystal River	75 (10/1 - 3/31) 145 (4/1 - 9/30)	11/08/1985
95CW0289	Castle Creek	confl unnamed tributary	hdgt Castle Creek Ditch	0.5 (9/1 - 3/31) 1.75 (4/1 - 7/31) 1 (8/1 - 8/31)	11/06/1995

In addition to standard terms regarding measuring devices, accounting and retained jurisdiction, the Applicant has agreed to the following additional protective terms and conditions:

- “Should a validly administered call senior to the Subject Water Rights originate from the Roaring Fork River within its reach extending from its confluence with the Fryingpan River upstream to its confluence with Castle Creek, the Applicant shall curtail to the extent necessary all out of priority diversions under the Subject Water Rights. Similarly, if a validly administered call senior to the Subject Water Rights is placed on the mainstem of Castle Creek located within the reach beginning at its confluence with the Roaring Fork River and extending upstream to its confluence with Queen’s Gulch, the Applicant shall curtail to the extent necessary all diversions under the Subject Water Rights. During these periods, the Applicant can continue to beneficially use water that was previously lawfully placed into storage. All diversions of the Subject Water Rights, both to storage and for direct use, are at least partially consumptive. Therefore, during a validly administered call from a water right senior to the Subject Water Rights and located upstream from the locations where Applicant’s replacement sources are delivered to replace Applicant’s depletions, diversions under the Subject Water Rights will be curtailed to the extent necessary to meet that validly administered call.”
- “As used in this decree, “validly administered call” means a call that is recognized and administered by the Division Engineer.”
- CWCB also requested, and Applicant agreed, to clarify and distinguish the claims regarding new adjudications from the rights to be augmented under the plan.

### **(3) Case No. 20CW3176 (Water Division 5) - Application of Big Fish Amalgamated, LLC**

The Board ratified this Statement of Opposition at its March 2021 meeting. Applicant requested water rights and approval of plan for augmentation and exchange. Staff, in cooperation with the Attorney General’s Office, has negotiated a settlement to ensure that the CWCB’s instream flow water rights will not be injured.

The CWCB holds interests in acquired water rights in the Fraser River Basin, pursuant to Case No. 11CW152, as well as appropriated instream flow water rights in the Colorado headwaters watershed that could have been injured by this application, including the following:

#### **Appropriated ISF Water Rights:**

<b>Case Number</b>	<b>Stream</b>	<b>Upper Terminus</b>	<b>Lower Terminus</b>	<b>CFS Rate (Dates)</b>	<b>Approp. Date</b>
90CW0293	Pole Creek	confl unnamed tributary	confl Skunk Creek	1.5 (7/1 - 7/31) 3 (4/1 - 6/30) 1 (8/1 - 3/31)	11/27/1990
90CW0293	Pole Creek	confl Skunk Creek	confl Crooked Creek	2 (7/1 - 7/31) 1.5 (8/1 - 8/31) 3 (4/1 - 6/30) 1 (9/1 - 3/31)	11/27/1990
90CW0296	Crooked Creek	confl Pole Creek	confl Fraser River	2.75 (10/1 - 4/14) 8 (4/15 - 8/14) 4 (8/15 - 9/30)	11/27/1990

90CW0308	Fraser River	confl Crooked Creek	confl Colorado River	30 (5/15 - 9/15) 19 (9/16 - 5/14)	11/27/1990
80CW0446, 447, 448	Colorado River	hdgt Windy Gap Project div	confl Blue River	90, 135, 150 (1/1 - 12/31)	07/08/1980

In addition to standard terms regarding measuring devices, accounting and retained jurisdiction, the Applicant has agreed to the following additional protective terms and conditions:

- Applicant shall curtail diversions of the Silver Spur Diversion Structure No. 2 Refill right, the Graves No. 3 Spring Refill right, the McCoy Pond No. 1 First Enlargement right, McCoy Pond No. 2 First Enlargement right, and the McCoy Pond Nos. 1 and 2 Refill rights when a call for any of the Colorado Water Conservation's Board's instream flow rights downstream of the diversions are being administered. Additionally, when irrigation use is not occurring on the lands decreed in Case No. 81CW13 under the rights for Silver Spur Diversion Structure No. 2, as decreed in Case No. 81CW13, and McCoy Pond No. 1, as decreed in Case No. 00CW254, these rights are not protected under the Historic Users Pool of Green Mountain Reservoir and will be curtailed when a call for any of the Colorado Water Conservation Board's instream flow rights downstream of the diversions are being administered.
- CWCB also requested, and Applicant agreed, to clarify and distinguish the claims regarding new adjudications from the rights to be augmented under the plan.

## B. LETTER-IN-LIEU

The following cases were resolved by Staff through a negotiated letter in lieu of filing a water court Statement of Opposition. This method of settlement is preferred when facts and time allow such negotiation before the Statement of Opposition period ends. For these cases, CWCB staff will continue to monitor the proposed rulings and decrees. The following cases were negotiated to resolution:

### **(1) Case No. 19CW3103 (Water Division 1) - Application of Upper Bear Creek Properties, LLC, John Watson, Debbie P. Writer, and Mountain Mutual Reservoir Company**

During the May 2019 Water Court Resume Review, CWCB staff identified concerns regarding potential injury to CWCB's instream flow water rights decreed in Case Nos. 94CW0258, 94CW0259, and 94CW0260 on Bear Creek. This case was resolved with CWCB based on conversations and correspondence in which CWCB and Applicant agreed to come up with language in the decree. An Amended Decree was entered in the case on November 5, 2021. This case is closed on Colorado Courts E-Filing.

Section 33, pages 18-19 of the Amended Decree contains the terms and conditions, as follows:

- "33. The Colorado Water Conservation Board ("CWCB") has decrees for instream flow rights on Bear Creek between Evergreen Lake and the Harriman Ditch decreed in Case Nos. 94CW259 and

94CW260 ("ISF Rights"). The CWCB and MMRC stipulated in Case No. 94CW290 to certain conditions that apply to augmentation of the wells in this case as follows:

- 33.1 Augmentation by operation of administrative exchange of Wells 1-10 using MMRC water can continue during a call from the ISF Rights since the cumulative well depletions augmented by MMRC water do not exceed 1% of the ISF Rights, pursuant to the conditions in Paragraph 6.11 of the 94CW290 Decree.
- 33.2 With the exception of augmentation by releasing water to replace depletions from any structure other than itself, all decreed uses of the 3 Ponds, including replacement of each pond's own evaporation, existed prior to the appropriation of the ISF Rights. Therefore, pursuant to C.R.S. § 37-92-102(3)(b), filling to replace evaporation in the 3 Ponds can continue notwithstanding a call by the ISF Rights. However, refilling any of the 3 Ponds directly or by exchange after using the water for augmentation of any other structure cannot occur during a call by either or both of the ISF Rights.
- 33.3 Net evaporation from the Watson Pond is calculated based on the increased water surface of the pond compared to the water surface of the stream prior to construction of the pond. Gross evaporation from the increased water surface per NWS 33 is reduced by average monthly effective precipitation, estimated as 70% of precipitation reported at the Evergreen weather station to determine net evaporation."

## **(2) Case No. 21CW3199 (Water Division 1) - Application of North Weld County Water District**

During the October 2021 Water Court Resume Review, CWCB staff identified concerns regarding potential injury to CWCB's instream flow water rights decreed in Case No. 85CW0419 on the Cache la Poudre River. This case was resolved with CWCB by a letter agreement, dated December 22, 2021, by which CWCB agreed not to file a Statement of Opposition, provided Applicant incorporates the following terms and conditions into any draft and final decrees and Applicant agrees to not oppose a motion to intervene by CWCB if such terms and conditions are not included.

The draft decree contains the terms and conditions, as follows:

- "Use pursuant to agreements with third-parties to replace historical return flows and augment out-of-priority depletions occurring outside the Applicants' respective service areas, as they exist now or may be expanded in the future, shall only occur pursuant to a future water court decree or a substitute water supply plan approved pursuant to section 37-92-308, C.R.S., or successor statutes."
- "NWCWD shall limit operation of its exchanges to times when there is exchange potential in the exchange reach. For purposes of this limitation, exchange potential shall exist when the operation of NWCWD's exchanges would not deprive any water right [FN2] within the exchange reach, including other exchanges, with a priority senior to NWCWD's exchanges decreed herein ("Intervening Senior") of water that such Intervening Senior is then legally entitled to exchange, divert or store in priority.

### **(3) Case No. 21CW3129 (Water Division 5) - Application of Dovfam Willoughby LP**

During the September 2021 Water Court Resume Review, CWCB staff identified concerns regarding potential injury to CWCB's instream flow water rights decreed in Case Nos. W-2948 (1976), 85CW0639, and 85CW0646 on the Roaring Fork River, and 79CW0190 on Hunter Creek. This case was resolved with CWCB by a letter agreement, dated November 24, 2021, by which CWCB agreed not to file a Statement of Opposition, provided Applicant incorporates the following terms and conditions into any draft and final decrees and Applicant agrees to not oppose a motion to intervene by CWCB if such terms and conditions are not included.

The draft decree contains the terms and conditions, as follows:

- "In the event of a local call above the confluence of the Roaring Fork River and Frying Pan Rivers, Applicant will curtail all diversions into the DOVFAM Pond System, and water levels will be allowed to drop commensurate with evaporation."

### **(4) Case No. 21CW0022 (Water Division 7) - Application of Ferat Ibram and Ashleigh Ibram**

During the September 2021 Water Court Resume Review, CWCB staff identified concerns regarding potential injury to CWCB's instream flow water right decreed in Case No. W-1295(1974) on the Rio Blanco River. This case was resolved with CWCB by a letter agreement, dated December 1, 2021, by which CWCB agreed not to file a Statement of Opposition, provided Applicant incorporates the following terms and conditions into any draft and final decrees and Applicant agrees to not oppose a motion to intervene by CWCB if such terms and conditions are not included.

- "Applicant's cumulative diversions from the new point of diversion, as decreed herein, along with the original point of diversion, shall not exceed the amount of water legally and physically available at the original point of diversion."
- "The alternate point of diversion for 1 cfs will be used in the same place of use and for the same types of use as the historical use and as the original decree allows."

### **C. LETTER to APPLICANT and DIVISION ENGINEER'S OFFICE- NO OTHER ACTION TAKEN**

CWCB staff sent a letter to the Applicant and/or the Division Engineer's Office ("DEO") in the following cases, for the purpose of notifying the Applicant and the DEO that some of the claimed water rights might qualify for C.R.S §37-92-102(3)(b) exemptions to priority water rights administration against some of CWCB's instream flow water rights.

### **(1) Case No. 21CW3171 (Water Division 6) - Application of Bruce O. Drogsvold**

During the September 2021 Water Court Resume Review, CWCB Staff sent a courtesy notice letter to Applicant with a copy to the DEO.

The letter states the following:

- "The Drogsvold Spring as decreed herein in the amount of 9.5 gpm to provide water for [[the uses allowed]] were practices in existence at the time of the instream flow water right appropriation on South Saint Vrain Creek decreed in Case No. W-9362 (1978). Pursuant to Section 37-92-102(3)(b), C.R.S., the Drogsvold Spring water right may continue to divert up to the decreed amount herein during a CWCB call for its instream flow water right. The subordination of the instream flow water right to the Applicant's water uses decreed herein pursuant to 37-92-102(3)(b) shall not interfere with the administration of the water uses decreed herein in priority as against all other water rights and shall not result in general subordination of the CWCB's decreed South Saint Vrain Creek water right to any other water rights junior to such instream flow water right."





**COLORADO**

**Colorado Water  
Conservation Board**

Department of Natural Resources

1313 Sherman Street  
Denver, CO 80203

P (303) 866-3441  
F (303) 866-4474

Jared Polis, Governor

Dan Gibbs, DNR Executive Director

Rebecca Mitchell, CWCB Director

**TO:** Colorado Water Conservation Board Members

**FROM:** Kirk Russell, P.E., Finance Section Chief

**Board Meeting:** January 24-25, 2022 Board Meeting

**Directors Report:** Water Project Loans  
Interest Rates

---

### Introduction

The CWCB establishes interest rates bi-monthly for the Water Project Loan Program (per Financial Policy #7).

The current rates for a 30-year term are as follows:

- 1.15% - Agricultural
- 1.60% - Low-income Municipal
- 1.80% - Middle-income Municipal
- 2.05% - High-income Municipal
- 6.00% - Commercial
- 2.00% - Hydroelectric

The standard loan term is 30 years. Rates are reduced by 0.25% for 20-year loans, and by 0.55% for 10-year loans. Rates are increased by 0.25% for 40-year loans.

The rates can also be found on the CWCB web site under the “Loans and Grants” tab. These rates will be applicable for loans presented at this Board meeting.





**COLORADO**

**Colorado Water  
Conservation Board**

Department of Natural Resources

1313 Sherman Street, Room 718  
Denver, CO 80203

P (303) 866-3441  
F (303) 866-4474

Jared Polis, Governor

Dan Gibbs, DNR Executive Director

Rebecca Mitchell, CWCB Director

**TO:** Colorado Water Conservation Board Members

**FROM:** Matthew Stearns, P.E., Project Development

**DATE:** January 24-25, 2022 Board Meeting

**DIRECTORS REPORT:** Water Project Loan Program  
Prequalified Project List and Loan Prospect Summary

---

The Finance Section compiles a list of prequalified projects for the Water Project Loan Program. In order to be included on this list, potential borrowers must submit a Loan Application and three years of financial statements to the CWCB staff. In addition, Borrowers requesting to be placed on the Prequalification Project List have a defined project, have performed preliminary engineering, and have a reasonable estimate of the project costs.

Projects on this list fit the initial criteria of the Water Project Loan Program; however, the list does not constitute loan approval. In order to receive a loan, borrowers must additionally submit a completed Loan Feasibility Study for review by CWCB staff. Staff will then prepare a recommendation to the Board for approval at a future CWCB meeting. Projects will remain on this list for one year from the date of the application or until Board approval of a loan.



### Prequalified Project List

BORROWER	PROJECT NAME	APPLICATION DATE	BASIN	PROJECT DESCRIPTION	PROJECT COST/LOAN AMOUNT
Previously Approved Applications					
	No prequalified projects at this time				
Total					\$ -



The Finance Section also compiles a list of potential borrowers/projects for the Water Project Loan Program. This list represents borrowers that have contacted the CWCB about a potential need for funding but have not submitted a loan application and loan feasibility study. Projects are also identified if they have a Health/Safety (\*), Economic Impact (†), or Federal Match (‡) component.

BORROWER	PROJECT NAME	POTENTIAL LOAN AMOUNT
<b>South Platte</b>		
NISP Participants	NISP	\$750,000,000
Woods Lake Mutual Ditch Company	Culvert Replacement	\$150,000
Town of Kersey	Water Line Project	TBD
Riverside Reservoir and Land Company	Ditch Rehabilitation	\$250,000
Town of Bennett	Raw Water Tank	\$500,000
Evergreen Metro District	Evergreen Dam Enlargement	TBD
Left Hand Water District	Dry Creek Reservoir	TBD
Shawnee Water Consumers Association	Reservoir Rehabilitation	\$200,000
Boulder and White Rock Ditch & Res. Co.	Reservoir Dredging	TBD
Western Mutual Ditch Company	Reservoir Dredging	TBD
Bergen Ditch and Reservoir Company (*)	Reservoir Rehabilitation	TBD
Louviers Water and Sanitation District	Regional Connection	TBD
City of Fort Collins	Irrigation Ditch Piping	\$20,000,000
City of Fort Collins	Halligan Reservoir Enlargement	\$120,000,000
Northern Colorado WCD	Windy Gap Firming (increase)	\$40,000,000
City of Loveland	Reservoir Enlargement	TBD
SPROWG Participants	SPROWG	\$1,800,000,000
City of Milliken (*)	Hillsboro Dam Rehabilitation	\$15,000,000
Colorado Parks and Wildlife (*)	Tarryall Dam Rehabilitation	\$5,000,000
Dave Miller Mutual Ditch Company	Ditch Piping Project	\$150,000
Standley Lake Operating Committee	Reservoir Expansion	TBD
Switzerland Park HOA	Reservoir Rehabilitation	\$300,000
Danna Ortiz	Knouth Reservoir Rehabilitation	\$3,000,000
Loup Reservoir Company	Loup Reservoir Rehabilitation	TBD
Smith and Emmons Ditch Company	Headgate Rehabilitation	\$176,000
Middle South Platte Reservoir Company	New Reservoir	TBD
Arthur Irrigation Company	Ditch Rehabilitation	TBD
Handy Ditch Company	Welch Reservoir Rehabilitation	\$1,000,000
Castle Pines Metropolitan District	Chatfield Water Purchase	\$500,000
Glacier Lake Property Owners	Glacier Lake Outlet Rehabilitation	TBD
Central, City of	Raw Water Pipeline	TBD
Denver, City of	Floodplain Improvement	TBD
Consolidated Mutual Water Company (*)	Reservoir Rehabilitation	TBD
<b>Subtotal</b>		<b>\$2,756,226,000</b>



BORROWER	PROJECT NAME	POTENTIAL LOAN AMOUNT
<b>Arkansas</b>		
Town of Manitou Springs	Raw Water Pipeline	\$3,000,000
City of Woodland Park	Storage Project	\$1,000,000
Fort Lyon Canal Company	Adobe Creek Enlargement	\$8,000,000
Deweese Ditch and Reservoir Co. (+)	Reservoir Enlargement	TBD
Holbrook Ditch Company	Reservoir Enlargement	TBD
Lake County	New Reservoir	TBD
Catlin Canal Company	Canal System Improvement	\$1,500,000
Lower Arkansas WCD	New Storage Account	TBD
Donala Water and Sanitation District	Ditch Construction	TBD
Mesa McKenna Mutual Ditch Company	Ditch Piping Project	TBD
Town of Avondale (*)	New Well	TBD
Round Mountain Water & Sanitation	New Reservoir	TBD
Ordway, Town of	Reservoir Rehabilitation	TBD
Cross Creek Metropolitan District	Hale Reservoir Rehabilitation	\$3,000,000
Twin Lakes Reservoir and Canal Company	Dam and Tunnel Rehabilitation	\$5,500,000
Colorado City (*)	Beckwith Dam Rehabilitation	TBD
Oxford Ditch Company	Flume Rehabilitation	\$1,800,000
Fort Lyons Canal Company (+)	Diversion Structure Repair	\$500,000
Aguilar, Town of (‡)	New Augmentation Reservoir	TBD
<b>Subtotal</b>		<b>\$24,300,000</b>
<b>San Miguel/Juan</b>		
Town of Bayfield	Ditch Piping Project	\$500,000
Redmesa Reservoir and Ditch Co. (*)	Redmesa Reservoir Enlargement	\$11,500,000
City of Cortez	Distribution System (Loss Prevention)	\$10,000,000
Webber Ditch Company (‡)	Ditch Piping Project	TBD
Pagosa Area Water and Sanitation Dist. (*)	Raw Water Pipeline Rehabilitation	TBD
Town of Naturita	Water Meters	TBD
Farmers Water Development Company	Reservoir Rehabilitation	TBD
Lone Cone Ditch and Reservoir Company	Reservoir Rehabilitation	TBD
Sellers McClane Reservoir and Ditch Co.	Reservoir Rehabilitation	TBD
<b>Subtotal</b>		<b>\$22,000,000</b>
<b>Colorado</b>		
Orchard Mesa Irrigation District	Lateral Piping	\$300,000
Silt Water Conservancy District	Harvey Gap Reservoir	\$300,000
Middle Ditch	Ditch Piping Project	TBD
New Multa Trina Ditch Company (‡)	Ditch Piping Project	TBD
Horse Pasture HOA	Ditch Piping Project	\$100,000
Gunther Covers	Christenson Dam	TBD
Town of Minturn	New Well Field	\$5,220,000
Flannery Water Company, LLC	Reservoir Rehabilitation	TBD
Morrisania Water Supply Company	Headgate Repair and Ditch Piping	\$150,000
Fruita, City of	Reservoir Rehabilitation	TBD
Grand Junction City of (*)	Kannah Creek Flowline Repair	TBD
<b>Subtotal</b>		<b>\$6,070,000</b>



BORROWER	PROJECT NAME	POTENTIAL LOAN AMOUNT
<b>Gunnison</b>		
Gunnison County Electric	Taylor Park Hydro	\$1,000,000
Duke Ditch Company	Ditch Piping Project	\$400,000
Bostwick Park Water Conservancy District	Dam Construction	TBD
Kendall Reservoir Company	Reservoir Rehabilitation	\$140,000
Orchard City Irrigation District (‡)	Fruit Growers Reservoir Rehab	\$560,000
Ouray, City of	Water Supply Pipeline	\$750,000
Grand Mesa Water Users Association	Reservoir Rehabilitation	\$600,000
Crested Butte, Town of	Dam Outlet Rehabilitation	TBD
Olathe, Town of	Water Meter Replacement	TBD
<b>Subtotal</b>		<b>\$3,450,000</b>
<b>North Platte</b>		
Colorado Parks and Wildlife (*)	North Michigan Creek Reservoir	\$6,000,000
Spicer Ranches, LTD	Reservoir Rehabilitation	TBD
Walden, Town	New Well	TBD
<b>Subtotal</b>		<b>\$6,000,000</b>
<b>Rio Grande</b>		
Manassa Land & Irrigation Co.	Ditch Rehabilitation	\$6,000,000
Baca Grande WSD	Water Rights Purchase	\$1,000,000
Sanchez Ditch and Reservoir Co.	Dam Rehabilitation	\$4,000,000
Rio Grande WCD - Subdistrict #1	Water Rights Purchase	\$5,000,000
Center, Town of	Water Meter Project	\$200,000
San Luis Valley WCD (†)	Shaw Reservoir Purchase	TBD
Colorado Parks and Wildlife	Alberta Park Dam Rehabilitation	\$4,000,000
La Jara, Town of	System Rehabilitation	TBD
<b>Subtotal</b>		<b>\$20,200,000</b>
<b>Yampa</b>		
Town of Oak Creek (*)	Reservoir Rehabilitation	\$5,600,000
Rio Blanco WCD	Wolf Creek Reservoir	\$100,000,000
Bear River Reservoir Company	Stillwater #1 Dam Rehabilitation	TBD
Marc Etchart	Procter Reservoir Rehabilitation	TBD
<b>Subtotal</b>		<b>\$105,600,000</b>





## COLORADO

### Colorado Water Conservation Board

Department of Natural Resources

1313 Sherman Street  
Denver, CO 80203

P (303) 866-3441  
F (303) 866-4474

Jared Polis, Governor

Dan Gibbs, DNR Executive Director

Rebecca Mitchell, Director

**To:** Colorado Water Conservation Board Members

**From:** Kirk Russell, P.E., Finance Section Chief  
Jessica Halvorsen, Program Assistant

**Board Meeting:** January 24-25, 2022 Board Meeting

**Directors Report:** Water Project Loan Program, Design & Construction Status Report

The CWCB Loan Program has Substantially Completed (17) projects in Calendar Year 2021 as shown in Table 1. There are currently (45) projects authorized to receive loan funding totaling \$345M. There are (40) projects currently under contract and in the Design/Construction phase totaling \$241M. The attached spreadsheet summarizes the status of all loan. A detailed description about each project is provided on the CWCB website under Water Project Loan Program. [cwcb.colorado.gov/loans-grants/water-project-loan-program](https://www.cwcb.colorado.gov/loans-grants/water-project-loan-program)

TABLE 1

	Borrower	Project	County	Loan Amount	Complete
1	Central Colorado Water Conservancy District	Chatfield Reallocation Project - First Cost of Storage	Arapahoe / Douglas / Park /	\$3,187,560	2/1/21
2	Left Hand Water District	Participation in Southern Water Supply Project II	Broomfield / Weld	\$10,000,000	2/1/21
3	South Fork, The	Augmentation Water Purchase	Rio Grande	\$440,400	3/1/21
4	St. Vrain & Left Hand WCD	Emergency Rock'n WP Ranch Lake No. 4 Repair	Boulder	\$3,238,613	3/1/21 (a)
5	St. Vrain & Left Hand WCD	Lake No. 4 Outlet Pipeline Repair	Boulder	236,154	3/1/21
6	Redlands Water and Power Co.	Pumpline Replacement Project	Mesa	568,944	5/1/21
7	Lateral Ditch ML47, Inc.	Lateral Ditch Pipeline Project	Mesa	692,548	6/1/21
8	North Sterling Irrigation District	Outlet Canal Automation Phase II Project	Logan	\$395,920	7/1/21
9	Redlands Water and Power Co.	Roller Gate Replacement	Mesa	\$404,000	8/1/21
10	Pueblo Conservancy District	Arkansas River & Wildhorse Creek Levees Project	Pueblo	\$23,230,000	9/1/21
11	Julesburg Irrigation District	Diversion Structure Rehabilitation	Sedgwick	\$1,298,207	9/1/21
12	San Luis Valley Irrigation District	Rio Grande Res Rehab - Phase 2	Hinsdale / Rio Grande	\$15,000,000	10/1/2021(b)
13	Central Colorado WCD	Chatfield Reallocation Project Phase II Mitigation	Douglas Arapahoe / Douglas / Park /	\$6,670,684	10/1/*21 (c)
14	Castle Pines North MD	Chatfield Reallocation Project Phase II Mitigation	Arapahoe / Douglas / Park /	\$1,430,032	10/1/21(d)
15	Centennial WSD	Chatfield Reallocation Project Phase II Mitigation	Arapahoe / Douglas / Park /	\$10,400,368	11/1/21 (e)
16	Centennial WSD	Chatfield Reallocation Project - First Cost of Storage	Arapahoe / Douglas / Park /	\$4,978,290	11/1/21
*17	Rural Ditch Company	Diversion Structure Improvement	Weld	\$662,483	12/1/21
	* included in Director's Report		Total	\$82,933,803	

Calendar Year 2021 has added and preserved 63,915 acre-feet of reservoir storage; (a) 600; (b) 51,113; (c) 4,274; (d) 1,006; (e) 6,922







## Diversion Structure Improvement Project

Rural Ditch Company  
Substantially Complete December 1, 2021



The new headgate structure and control equipment (top-left) and the boulder diversion structure (bottom-right).

### Project Description

The Rural Ditch Company (Company) was organized in 1873 to deliver water to shareholders in Weld County. Currently, the Company has 21 shareholders including farmers, commercial entities, special districts, and municipalities that use the water for agricultural irrigation, drinking water, and augmentation.

The preexisting diversion structure was damaged and undermined during the September 2013 floods, but was still operations. After the flood, the structure continued to deteriorate and was in need of repair. The project included engineering and construction work to stabilize and repair the structure. The repairs included rebuilding the rock dam with a center cutoff sheetpiles and installing a grouted boulder apron on the downstream side of the structure. Construction began in the fall of 2020 and was operational for the 2021 irrigation season. Final punchlist items were completed in fall of 2021.

P R O J E C T   D A T A		
Sponsor: Rural Ditch Company	County: Weld	Water Source: Boulder Creek
Type of Project: Diversion Structure Rehabilitation	Board Approval Date: July 2020	
Loan Terms: 30 yr @ 2.70% (Original) \$813,050.00    (Final) \$662,483.35		
Design Engineer: Civil Resources, LLC.		
Contractor: Concrete Works of Colorado, Inc.		



	Borrower/Projects	County	Loan Amount	Design Status	Const. Start/End	Const Status	PM	Status Description/Update
Projects in Design or Construction								
1	Amity Mutual Irrigation Company >Queen Reservoir Dam Rehabilitation CT2021-2224	Kiowa	\$1,333,000	50%	Fall 2020 - Spring 2023	5%	RP	Dam breached. Final design underway then Dam Safety review/approval. Bid pkg. Aug2021.
2	Arapahoe County Water and Wastewater Authority >Chambers Reservoir Liner Rehabilitation CT2021-513	Arapahoe	\$4,000,000	100%	May 2020 - May 2022	80%	RP	Under construction Aug 2020. Dam Safety fill approval-May2021. Loan increase request May2021 for pump system component. Crane cert. 12/2021, pump delivery-delay until 1/2022, pouring pump pads 12/2021
3	Billings Ditch Company >Billings Ditch Implementation Project CT2022-2886	Rio Grande/Alamosa	\$171,000	0%	Fall 2021 - Fall 2022	0%	CB	This project is being managed by the Rio Grande Headwaters Restoration Foundation to replace the Billings Ditch diversion structure. A water plan grant for the same project was contracted in October. Bidding for contractor selection is taking place in November.
4	Cedar Mesa Ditch Company >Lower Cedar Mesa Ditch Piping CT2020-2680	Delta	\$1,346,000	100%	Sept 2020 - Spring 2023	95%	MS	Construction began in October. The intake structure is complete and pipe installation is finished. Construction on the overflow structure is nearly complete.
DIVERSION STRUCTURE REPLACEMENT \$5,035,000								
5	a. Deuel and Snyder Improvement Company >Diversion Structure Replacement CT2020-3562	Morgan	\$643,000	100%	Aug 2020 - May 2022	80%	CB	This project will support the replacement of UPBCC/DSIC's 1,400 foot long diversion structure on the South Platte. Contractor mobilization and first purchase of materials took place in June 2020. A Scope increase will extend the project into Spring 2022.
	b. Upper Platte and Beaver Canal Company >Diversion Structure Replacement CT2020-0333	Morgan	\$4,392,000	100%	Aug 2020 - May 2022	98%	CB	
6	Duke Ditch Company >Piping the Duke Ditch CT2017-0915 CTGG1 2017-0212 (WSRF)	Delta	\$90,000	100%	On Hold	0%	MS	NRCS finalized the design in August 2018. Federal grant expired. Company is evaluating options of applying for a loan increase and completing project without federal grant dollars.
7	Florida Consolidated Ditch Company >Hess Lateral Improvement CT2019-2034 CTGG1 2016-1319 (WSRF)	La Plata	\$1,075,000	100%	On Hold	0%	KR	Company received bids. The low bid exceeded the available funding. Company is in the process of value engineering and project adjustments.
8	Florida Consolidated Ditch Company >Florida Canal Diversion Replacement CT2021-2890 WSRF & WPG CTGG1 2021-2418	La Plata	\$750,000	10%	Spring 2021 - Fall 2023	0%	MS	This project is the replacement of a low head dam diversion structure with multibeneficial outcomes. Design work began in the summer of 2021 and is ongoing.
9	Fort Morgan Farms, LLC >Delta Water Storage Phase 1 CT2021-2222	Weld	\$8,982,000	100%	Fall 2021 - Spring 2022	25%	CB	The Delta Storage Project will construct a below grade storage reservoir. The loan covers the cost of constructing a slurry wall around the reservoir to isolate future stored water from existing groundwater. Currently the slurry wall is under construction.
10	Fruitland Irrigation Company >Tunnel and Canal Renovation CT2019-2848 WSRF CTGG1 2019-2449 WPG CTGG1 2019-2475	Delta & Montrose	\$1,729,000	100%	Jan 2020 - Dec 2023	35%	RP	Sept 2018 letter from Bureau of Reclamation recvd. Section 1 tunnel work bid pkg Dec2020. Section 2 Tribble - Pipe placement, compaction testing. Section 3&4 Rundle - begin breaking and removal of bedrock. Tribble and Wright placing concrete lining.
11	Genesee Water and Sanitation District >Reservoir No. 1 Enlargement CT2021-2851 WPG CTGG1 2021-3347	Jefferson	\$4,200,000	90%	Fall 2021 - Winter 2023	5%	RP	Loan approved Sep 2020. Water Plan Grant approved in March2021. Contracting loan and grant at the same time.
12	Glenwood Springs, City of >System Redundancy and Pre-Treatment Improvemnts >CT2021-3104	Garfield	\$8,000,000	100%	Spring 2021 - Fall 2021	20%	CB	This Wildfire Emergency Loan will improve the infrastructure for Glenwood Springs' water collection system to cope with increased sediment in their source waters as a result of the Grizzly Creek Fire in 2020.
13	Grand Mesa Water Conservancy District >Peak Res. & Blanche Park Res. Rehabilitation C150354 (CT2015-061)	Delta	\$466,620	100%	Mar 2013 - Dec 2021	95%	MS	Construction on Peak Reservoir began in the 2013 season and was completed in Oct 2014. Construction on Blanche Park Reservoir began in July 2020. Sufficient embankment fill material has been located and construction is progressing with completion expected by the spring.
14	Grand Junction, City of >Carson Reservoir Dam Rehabilitation CT2021-3110	Mesa	\$3,000,000	100%	Spring 2021 - Fall 2021	30%	CB	This project will update Grand Junction's Carson Reservoir in compliance with Dam Safety's recommendations including installing state-of-the-art flood advance warning equipment. The Contractor has shut down for the winter and will re-mobilize in spring 2022.
15	Grand Junction, City of >Purdy Mesa Flowline Replacement CT2021-2857	Mesa	\$7,000,000	100%	Winter 2021 - Summer 2023	0%	CB	The Purdy Mesa Flowline is a large diameter pipeline that supplies raw water to the Grand Junction WTP. Most of the line was replaced as part of previous projects and this project will replace the last remaining out-of-date pipe material. Project is on hold until 2022.
16	Groundwater Management Subdistrict of CCWCD >Hokestra Reservoir Purchase CT2020-3348	Weld	\$5,390,500	100%	May 2020 - Dec 2022	30%	CB	This Project will purchase an existing reservoir for use as augmentation storage. Funds have been disbursed for the reservoir purchase, but construction is in the earliest phases.
17	Groundwater Management Subdistrict of CCWCD >Pioneer Reservoir CT2019-3687	Weld	\$8,611,000	75%	Sep 2019 - May 2022	20%	CB	This is a gravel pit retrofit for augmentation water supply. Funds for the initial reservoir purchase and some engineering were disbursed in May 2019. Construction efforts are expected to begin in 2021.
18	Hidden Valley Water District >Master Water Meter Connection CT2020-2244	Jefferson	\$1,720,000	100%	Feb 2020 - Dec 2021	95%	RP	Assets and operations are all to the District. District signed and approved EMD IGA. Precon Dec2019. Construction begin Feb 2020. EMD connect 7/2020. Construction complete, final walkthru Aug2020. Working on IGA with EMD. Continued water court proceedings by EMD as of 12/2021.
19	Huerfano County Water Conservancy District >Regional Augmentation Project C150364 (CT2015-0047)	Huerfano	\$2,640,000	100%	Jan 2014 - Dec 2021	99%	RP	Land and water rights purchase occurred in January 2014. Phase I completed Oct 2017. Ph 3 - Reservoir liner complete 8/2019. Approved loan increase and time extension 11/2019 mtg. Award to Frontier Environ. Services. Ph4 Rebar pump station footer placed, diversion structure wall poured 12/2020. Construction complete. Asbuilt dwgs underway
20	Left Hand Ditch Company >Allen's Lake Filler Canal Improvements CT2019-3463	Boulder	\$1,065,000	100%	Dec 2020 - Nov 2021	90%	CB	This project replaced 2,750 feet of open ditch with a buried pipe. The Borrower is returning for a loan increase to cover the costs of some scope changes and increased material costs. The Project is complete and the increase will pay for work completed.

	Borrower/Projects	County	Loan Amount	Design Status	Const. Start/End	Const Status	PM	Status Description/Update
21	Logan Irrigation District >Prewitt Reservoir Rehabilitation CT2021-3898	Logan	\$1,563,000	100%	Spring 2021 - Fall 2021	75%	CB	This project will support dredging efforts to eliminate a dead pool at Prewitt Reservoir. The project is currently under way and the contractors are on site.
22	Lookout Mountain Water District >Upper and Lower Beaver Brook Dam Rehabilitation CT2021-3115	Jefferson	\$3,500,000	100%	Spring 2021 - May 2022	85%	RP	Contractor mobilized and site staging. Construction and dam demolition. RCC dam 100% complete as of 12/21. Spillway and outlet work construction continues.
23	North Sterling Irrigation District >North Sterling River Diversion Replacement CT2021-3875	Morgan	\$3,498,000	100%	Fall 2021 - Spring 2022	80%	CB	Demolition of the existing structure began in July 2021. Long-lead-time items have been ordered. Work is progressing on schedule and on budget. Completion is expected before the 2022 irrigation season begins.
24	Ogilvy Irrigating and Land Company >Seely Reservoir Dredging CT2019-2099 CTGG1 2019-2018 (WPG)	Weld	\$2,252,000	85%	Fall 2021 - Spring 2023	0%	RP	USACE 12/2019 non jurisdictional determination. Floating dredge proposed in lieu of draining/excavating reservoir convent. excavation/haul. OILC concerned floating dredge ability dewater sufficiently for adjacent property. Reviewing options.
25	Orphan Wells of Wiggins >Kiowa Creek Dam Rehabilitation CT2021-3116	Morgan	\$373,000	100%	Spring 2021 - Fall 2021	80%	CB	This project will repair five non-jurisdictional dams operated by Orphan Wells of Wiggins for augmentation purposes. Mobilization took place in January 2021. Dam work complete Spring 2021. Loan increase request (May 2021) for well power supply conversion
26	Redmesa Reservoir and Ditch Company >Redmesa Reservoir Rehabilitation Engineering CT2022-0498	La Plata	\$183,000	60%		0%	MS	This project is to engineer a financially feasible dam rehabilitation, including a potential enlargement. Work began on March 8, 2021 and is now exploring funding options with significant cost increases.
27	Rio Grande Water Conservation District Subdistrict No. 5 >Saguache Pipeline CT2021-3846	Saguache	\$4,844,000	80%	Spring 2021 - Fall 2022	0%	RP	Working on well owner agreement and Project easement agreements.
28	Southeastern CO Water Conservancy District >Pueblo Dam Hydroelectric Project CT2018-0833	Pueblo	\$17,220,000	100%	June 2017 - Nov 2021	99%	RP	Construction beginning fall 2017. District anticipates power production by fall of 2018. Tie-in to SDS complete April 2018. Waiting on transformer approval from Black Hills. Turbine and generator placement and fiber optic line approval. Functional and producing power. Finalizing adjustments and design details. 2-yr performance time extension approved.
29	South Platte Ditch Company >Diversion Structure Rehabilitation CT2022-0424	Washington	\$1,065,000	100%	Aug 2021 - Apr 2022	90%	CB	The project will replace the South Platte Ditch Company's Diversion Structure. Long-lead-time items have been purchased and delivered to site. Construction is ongoing.
30	Spring Dale Ditch Company >Diversion Structure Replacement Project CT2020-3110	Logan	\$1,210,000	100%	Feb 2020 - Apr 2022	98%	CB	This project will replace Springdale's aging diversion structure on the South Platte. All work except the final punch list items are complete.
31	Tunnel Water Company >West Half Laramie-Poudre Tunnel Rehabilitation CT2019-3706	Larimer	\$17,080,000	100%	Sep 2019 - Apr 2023	80%	RP	Construction scheduled to begin the Fall 2019, when low water and non-irrigation season. Requesting loan increase 11/2019, 3/2020 from Projects Bill 2020. Construction delays due to Cameron Peak wildfire. Unplanned construction season 3. Runaround complete, station 52+00 of 65+00.
32	Tunnel Water Company >Headgate Improvements Project (Wildfire Impact) CT2021-3928	Larimer	\$1,206,000	100%	Apr 2021 - Sep 2021	99%	RP	Power supply installation complete. Duperon gate delivery at site. Headgate installation underway. Construction complete. Project final.
33	Tunnel Water Company >Rawah Ditch Tunnel Rehabilitation CT2021-3927	Larimer	\$2,150,000	100%	Apr 2021 - May 2022	90%	RP	Downstream end of 54in pipe backfill grouting completed. Grout return out of the rock approximately 15ft above the pipe from the rock face. Visible grey strips running vertically in center of the picture. Restruction doing injection grouting in the riprap at ends of pipe.
34	Victor, City of >Victor Reservoir No. 2 Dam Rehabilitation CT2021-3873	Teller	\$375,000	100%	Apr 2021 - Dec 2022	0%	RP	Bid package complete and advertised. Prebid scheduled 19May2021. Planned begin construction Jun2021 changed to March 2022. Loan increase request January 2022.
35	VINELANDS POWER PLANT PROJECT							This project will replace the existing hydroelectric powerplant. PPA is signed, LOPP is signed. Contractor mobilized November of 2021.
	a. Grand Valley Water Users Association >Vinlands Power Plant CT2022-2084 WPG CTGG1 2022-2072	Mesa	\$1,066,000	100%	Fall 2021 - Fall 2022	5%	MS	
	b. Orchard Mesa Irrigation District >Vinlands Power Plant CT2022-2057	Mesa	\$1,066,000	100%	Fall 2021 - Fall 2022	5%	MS	
36	WALKER RECHARGE PROJECT \$15,000,000							The Walker Recharge project consists of diversions off the South Platte, a pipeline, and infiltration facilities to re-time augmentation flows. Two other loans and a grant are tied to the project. Construction related to the grant will begin in November and the first dipursals were made in December. The pipeline has been entirely installed and final appurtenances are being installed at this time.
	a. Central Colorado WCD >Walker Recharge CT2020-0310 (CTGG1 2019-3648 WPG Closed-out)	Weld	\$2,250,000	100%	Sep 2019 - Dec 2021	100%	CB	
	b. Groundwater Management Subdistrict of CCWCD >Walker Recharge CT2020-0324	Weld	\$9,750,000	100%	Sep 2019 - Dec 2021	100%	CB	
	c. Well Augmentation Subdistrict of CCWCD >Walker Recharge CT2020-0326	Weld	\$3,000,000	100%	Sep 2019 - Dec 2021	100%	CB	
37	Wiggins, Town of >Wiggins Recharge Facility at Glassey Farms CT2018-0892	Morgan	\$2,385,000	100%	Jul 2017 - Jul 2021	0%	CB	The purpose of this project is to develop an augmentation water source for the Town. In August 2017 the Town purchased Glassey Farms and its associated water rights and 52% of funds were disbursed at that time. The project is back underway and an extension was granted.
38	Windy Gap Firming Project Water Activity Enterprise >Windy Gap Project CT2021-2039	Larimer	\$89,108,911	100%	Spring 2021 - Summer 2024	0%	CB	Construction contract was awarded in December and allotment contracts among project participants are being drafted. Contractor was selected in October. Project loan conditions were amended at the March Board Meeting. Due to ongoing litigation the project start is delayed until 2022.
	WISE Project - Phase 2 Infrastructure \$7,326,940							

	Borrower/Projects	County	Loan Amount	Design Status	Const. Start/End	Const Status	PM	Status Description/Update
39	a. Cottonwood W&S Dist - C150408C (CT2015-0105)	Douglas/ Arapahoe	\$1,116,000	100%	Jan 2020 - Dec 2022	90%	RP	Binney Connection Pipeline of Water Infrastructure and Supply Efficiency project will increase WISE flow capacity to 30MGD and provide infrastructure from Aurora Binney Facility to SMWSA. Pumps/Treatment-Glacier, Pipeline/Infrastructure-T.Lowell, Jacobs is Engineer. Vault excavation began 9/2020. Construction trailer onsite through project duration. Glacier complete foundation work, pump cans have been delivered and installed, pump motors have arrived at the pump manufacture, preliminary SCADA meetings begun, Glacier starting to form rebar for the flow control building, start laying pipe. Precast concrete walls for pump station planned Jun2021.
	b. Inverness W&S Dist - C150409C (CT2015-0119)	Douglas/ Arapahoe	\$1,413,000	100%	Jan 2020 - Dec 2022	90%	RP	
	c. Parker W&S Dist - C150410C (CT2015-0109)	Douglas/ Arapahoe	\$3,384,810	100%	Jan 2020 - Dec 2022	90%	RP	
	d. Pinery (Den SE WSD)C150411B (CT2015-0086)	Douglas/ Arapahoe	\$1,413,130	100%	Jan 2020 - Dec 2022	90%	RP	
40	WISE Project - DIA Connection \$1,902,600							Annual disbursement to be made on this loan through 2021.Design Status indicates percent of funds disbursed to date. WISE WDA negotiations between parties continue with the goal of having an amended Water Delivery Agreement ready to be brought to the respective Boards and Council for review and approval by April 1, 2021. Group discussion continues focused on the DIA Connection.
	a. Cottonwood W&S Dist - C150408D (CT2015-0104)	Douglas/ Arapahoe	\$363,600	80%	N/A	60%	RP	
	b. Inverness W&S Dist - C150409D (CT2015-0120)	Douglas/ Arapahoe	\$450,000	80%	N/A	60%	RP	
	c. Parker W&S Dist - C150410D (CT2015-0110)	Douglas/ Arapahoe	\$1,089,000	80%	N/A	60%	RP	

Projects Under Contract : \$240,978,571

Approved Projects - Not Under Contract								
a	Taylor & Gill Ditch Company >Ditch Piping CT2022-XXXX CTGG1 2022-XXXX	Larimer	\$125,000	0%	Fall 2020 - Spring 2021	0%	CB	This project will replace 1,000 feet of open ditch with a buried pipe. Contracting documents are dated and need redone.
b	Southeastern Colorado Water Conservancy District >Arkansas Valley Conduit CT2022-XXXX	Pueblo, Crowley, Otero, Bent, Prowers	\$90,000,000	0%	Fall 2020 - Fall 2035	0%	RP	
c	Root and Ratliff Ditch Company >Ditch Piping and Rehabilitation >CT2022-XXXX	Montezuma	\$300,000	100%	Fall 2019 - Fall 2022	90%	RP	
d	Breckenridge, Town of >Goose Pasture Tarn Dam Rehabilitation CT2022-XXXX	Summit	\$13,000,000				CB	Projects Bill
e	Trinchera - GMS >Augmentation Pipeline >CT2022-XXXX	Rio Grande	\$977,000	50%	Jan 2022 - Dec 2022	0%	RP	

Not Under Contract SubTotal = \$104,402,000

Grand Total = \$345,380,571

**WATER PROJECT CONSTRUCTION LOAN PROGRAM  
LOAN REPAYMENT DELINQUENCY REPORT  
LOAN FINANCIAL ACTIVITY REPORT  
January 2022**

**The January 2022 Report for the Loan Program - Loan Repayment & Delinquency will be submitted along with the March Report at the March 2022 Board meeting. This is due to accounting personnel transition.**



## COLORADO

### Colorado Water Conservation Board

Department of Natural Resources  
1313 Sherman Street, Room 718  
Denver, CO 80203

January 15, 2022

Members of the 2022 Colorado General Assembly

Re: CWCB - Small Project Loan Report  
Loans Approved in Calendar Year 2021  
Construction Fund and Severance Tax Perpetual Base Fund

Pursuant to C.R.S. § 37-60-122(b), the Colorado Water Conservation Board (CWCB) is submitting the attached written determination of the basis for all loans under \$10,000,000 authorized during the 2021 calendar year. The report will be presented to the CWCB at the January 24-25, 2022 Board meeting.

The report will be posted on the web at [www.leg.colorado.gov](http://www.leg.colorado.gov) and on the CWCB website [www.cwcb.state.co.us](http://www.cwcb.state.co.us). A copy of the report has been submitted to the Legislative Library, Room 029 of the State Capitol Building. Paper copies of the Report can be made available upon request.

If you have questions or need additional copies of the report, please contact Ms. Alice Cosgrove, Legislative Liaison, at 303-866-3311 x8664.

Sincerely,

Rebecca Mitchell, Director  
Colorado Water Conservation Board



# **Colorado Water Conservation Board**

## **CONSTRUCTION FUND AND SEVERANCE TAX PERPETUAL BASE FUND**

### **SMALL PROJECT LOAN REPORT** (2021 CALENDAR YEAR)



**COLORADO**

**Colorado Water  
Conservation Board**

Department of Natural Resources

**Colorado Water Conservation Board  
Department of Natural Resources**

**January 15, 2022**

## **PREFACE**

Pursuant to Section 37-60-122(b) of the C.R.S. the Colorado Water Conservation Board (CWCB) is required to submit a report by January 15<sup>th</sup> of each year to the Colorado General Assembly describing the basis of all Construction Fund and Severance Tax Perpetual Base Fund loans authorized by the CWCB under \$10,000,000. This report fulfills the CWCB reporting obligations for those “Small Project” loans for Calendar Year 2021.

The report includes a summary spreadsheet identifying each loan approval date, the project sponsor or borrower, the project name, the loan amount, and the name of the County and River Basin where the project is located. There were 14 new loan projects under \$10,000,000 approved by the CWCB in Calendar Year 2021. The total loan value is approximately \$19 million.

Included in the report is a loan project Data Sheet for each new loan project. The Data Sheet includes a project description, project location map, and other pertinent loan and project information.

January 15, 2022

**Colorado Water Conservation Board  
Small Project Loans  
For Calendar Year 2021**

	<b>Date Approved</b>	<b>Borrower</b>	<b>Project</b>	<b>Amount Approved</b>	<b>Funding Source*</b>	<b>County</b>	<b>Basin</b>
1	01/25/21	North Sterling Irrigation District	Outlet Canal Automation Project Phase II	\$ 395,920	CF	Logan	South Platte
2	03/10/21	Logan Irrigation District	Prewitt Reservoir Rehabilitation Project	\$ 1,578,630	CF	Logan	South Platte
3	03/10/21	Rio Grande Water Conservation District Subdistrict No.5	Saguache Pipeline	\$ 4,892,440	CF	Saguache	Rio Grande
4	03/10/21	The Tunnel Water Company	Headgate Improvements Project (Wildfire Impact Loan)	\$ 1,218,060	CF	Larimer	North Platte/South Platte
5	03/10/21	The Tunnel Water Company	Rawah Ditch Tunnel Rehabilitation Project	\$ 2,171,500	CF	Larimer	North Platte/South Platte
6	03/10/21	City of Victor	Victor Reservoir No. 2 Dam Rehabilitation	\$ 378,750	CF	Teller	Arkansas
7	03/10/21	Orchard Mesa Irrigation District	Vinelands Power Plant	\$ 1,076,660	ST	Mesa	Colorado
8	03/10/21	Grand Valley Water Users Association	Vinelands Power Plant	\$ 1,076,660	ST	Mesa	Colorado
9	03/10/21	North Sterling Irrigation District	North Sterling River Diversion Replacement Project	\$ 3,532,980	ST	Morgan	South Platte
10	05/20/21	South Platte Ditch Company	Diversion Structure Rehabilitation	\$ 1,075,650	ST	Washington	South Platte
11	05/20/21	Redmesa Ward Reservoir and Ditch Company	Redmesa Reservoir Rehabilitation Engineering	\$ 184,830	CF	La Plata	Southwest
12	09/15/21	Billings Ditch Company	Billings Ditch Implementation Project	\$ 172,710	CF	Rio Grande/Alamosa	Rio Grande
13	11/17/21	Root and Ratliff Ditch Company	Ditch Piping and Rehabilitation	\$ 303,000	CF	Montezuma	Southwest
14	11/17/21	Trinchera Groundwater Management Subdistrict	Augmentation Pipeline	\$ 986,770	CF	Costilla	Rio Grande

**Total Amount Approved in 2021**

**\$ 19,044,560**

\*Indicates whether the funding source is from Construction Fund (CF) or Severance Tax Fund (ST)



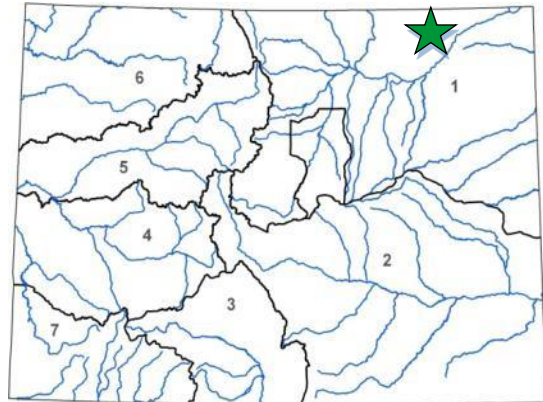


## Outlet Canal Automation Phase II Project

North Sterling Irrigation District

January 2021 Board Meeting

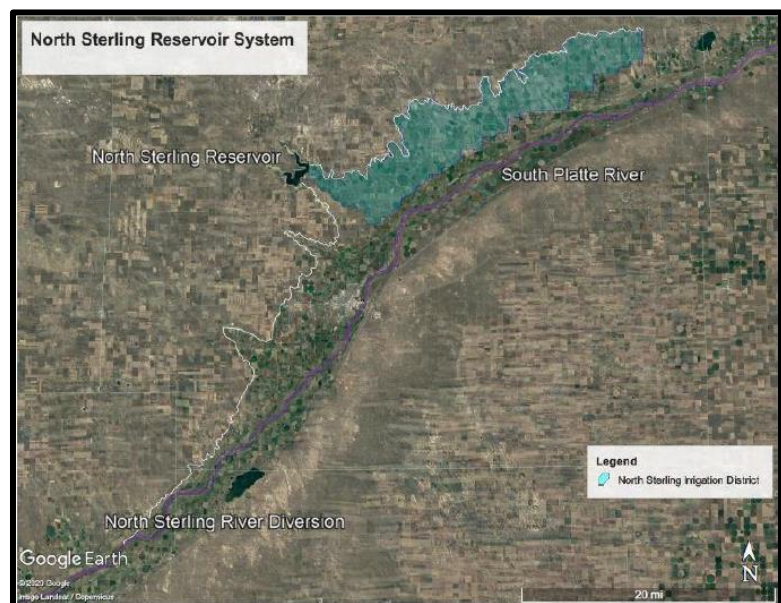
L O A N   D E T A I L S	
Project Cost:	\$392,000
CWCB Loan (with 1% Service Fee):	\$395,920
Loan Term and Interest Rate:	20 Yrs @ 0.90%
Funding Source:	Construction Fund
B O R R O W E R   T Y P E	
Agriculture	Municipal      Commercial
99.5%	0% Low - 0.5% Mid - 0% High      0%
P R O J E C T   D E T A I L S	
Project Type:	Ditch Systems Improvements
Average Annual Diversions:	67,922 AF



The North Sterling Irrigation District (District) was created in 1907 by the Board of County Commissioners and currently serves 122 landowners with more than 40,000 acres east of the North Sterling Reservoir. Irrigated land in the District's service area produces corn, alfalfa, sugar beets, pinto beans, small grains and feed crops.

L O C A T I O N	
County:	Logan
Water Source:	South Platte River
Drainage Basin:	South Platte
Division: 1	District: 64

The project will automate 42 of the District's on-farm headgates, following up on a successful Phase I which installed 25 of these systems. Automation will include solar power, a controller, an actuator to operate the headgate, a radar sensor at each Parshall flume, and telemetry for data access and remote control. This will provide benefits to the District and landowners by saving time, labor, and water, and by potentially reducing the size of a future regulating reservoir. Construction is expected to begin in the Spring of 2021 and last approximately 45 days.





## COLORADO

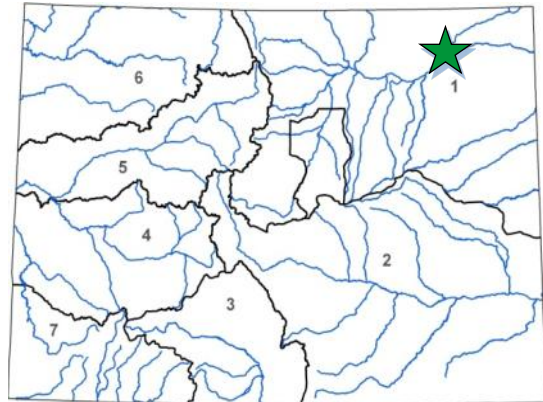
Colorado Water  
Conservation Board  
Department of Natural Resources

## Prewitt Reservoir Rehabilitation

Logan Irrigation District

March 2021 Board Meeting

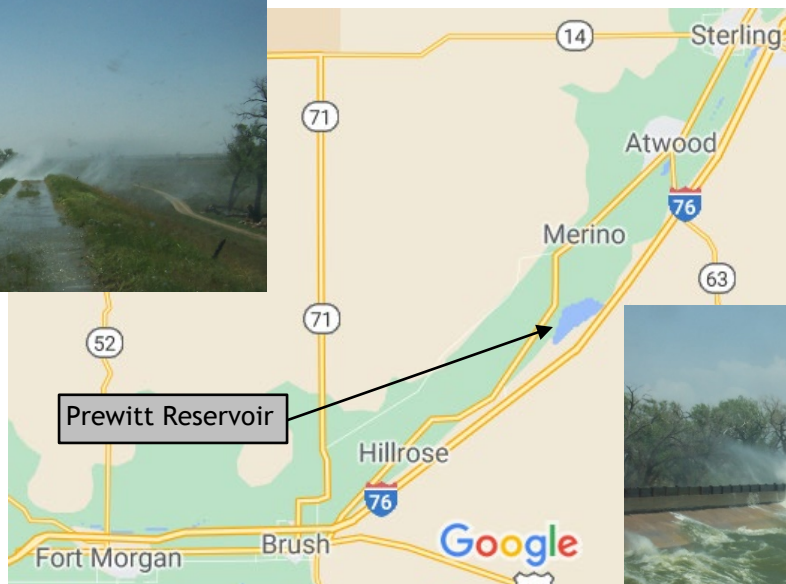
L O A N   D E T A I L S	
Project Cost:	\$1,563,000
CWCB Loan (with 1% Service Fee):	\$1,578,630
Loan Term and Interest Rate:	30 Yrs @ 0.70%
Funding Source:	Construction Fund
B O R R O W E R   T Y P E	
Agriculture	Municipal      Commercial
91%	2% Low - 0% Mid - 7% High      0%
P R O J E C T   D E T A I L S	
Project Type:	Reservoir Rehabilitation
Preserved Storage:	32,300 AF
Recovered Storage:	3,300 AF
Average Annual Diversions:	40,160 AF



L O C A T I O N	
County:	Logan
Water Source:	South Platte River
Drainage Basin:	South Platte
Division: 1	District: 64

The Logan Irrigation District (District) was formed in Logan County in 1910, and currently provides water for irrigation and augmentation to 125 landowners on approximately 12,800 acres. The District delivers water for Well User groups such as South Platte, Pawnee, and Logan, and the City of Sterling for well pumping replacement. Irrigated acreage in the District grows corn, alfalfa, sugar beets, pinto beans, and feed crops.

The dam was constructed in 1910 and measures 3.5 miles long and 36 feet high. It is owned and operated by the Prewitt Operating Committee (POC) which includes the Iliff Irrigation District, the Morgan Prewitt Reservoir Company, and the District. As the majority shareholder, the District is assuming financial responsibility for the loan and will be responsible for collecting from other POC members. The project involves installing wave breaks and a toe drain in order to remove a State Engineer Office (SEO) Dam Safety storage restriction restoring 3,300 AF to the reservoir. Construction is expected to begin in the summer of 2021, and finish before the spring of 2022.







**COLORADO**

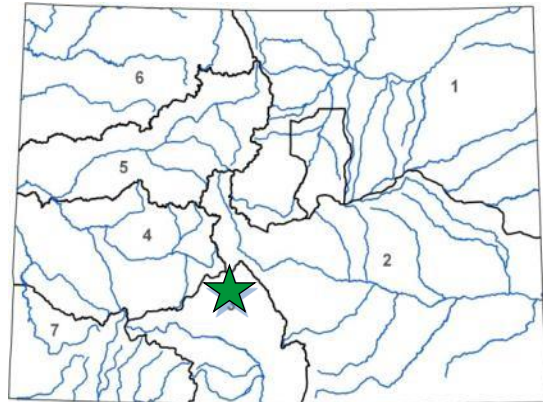
Colorado Water  
Conservation Board  
Department of Natural Resources

## Saguache Pipeline

### Rio Grande Water Conservation District Subdistrict No. 5

March 2021 Board Meeting

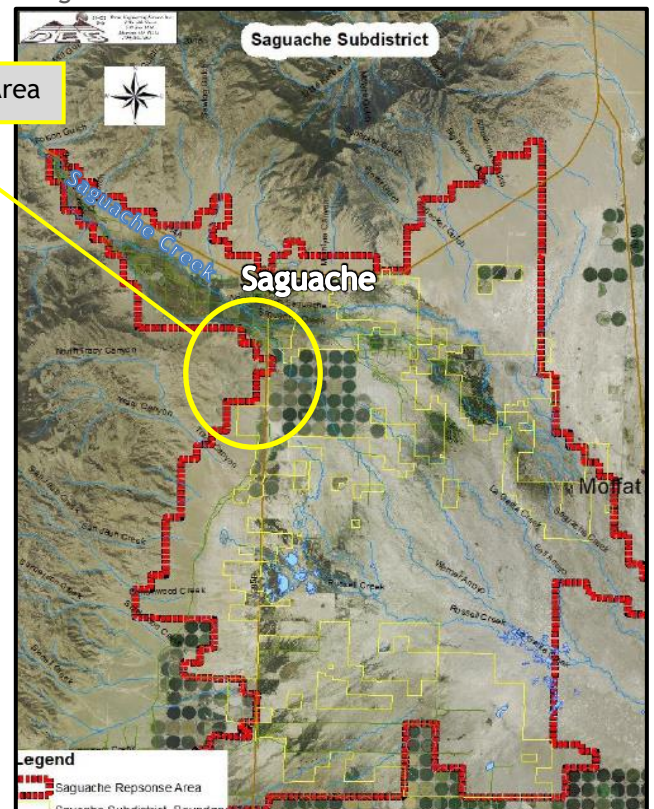
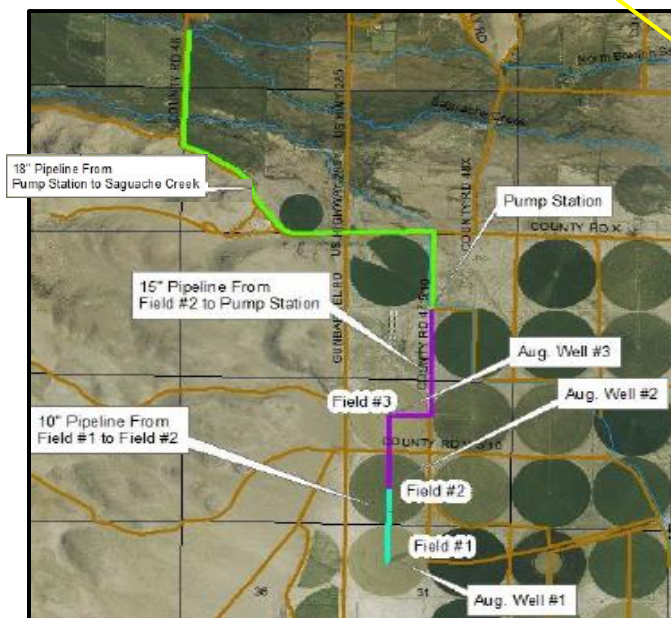
L O A N   D E T A I L S	
Project Cost:	\$4,844,000
CWCB Loan (with 1% Service Fee):	\$4,892,440
Loan Term and Interest Rate:	30 years @ 1.20%
Funding Source:	Construction Fund
B O R R O W E R   T Y P E	
Agriculture	Municipal      Commercial
98.3%	0% Low - 0% Mid - 0% High      1.7%
P R O J E C T   D E T A I L S	
Project Type:	Pipeline
Average Annual Withdrawals:	33,400 AF



L O C A T I O N	
County:	Saguache
Water Source:	Saguache Creek
Drainage Basin:	Rio Grande
Division: 3	District: 26

The Rio Grande Water Conservation District (District) Subdistrict No. 5 was established in 2017 to address the needs of its water users and to aid compliance with the Rules Governing the Withdrawal of Groundwater in Water Division No. 3, thereby remedying injury to senior surface water rights resulting from groundwater use.

Subdistrict No. 5 currently consists of 181 wells, and will owe its first depletions on March 15, 2021. Subdistrict No. 5 serves members who primarily farm grass hay, grass pasture, and alfalfa. The Project includes purchase of three sprinkler quarter sections, and construction of a pump station, a control system, and approximately 3.5 miles of pipeline in order to pump the lands historical consumptive use water from the confined aquifer to Saguache Creek. This will allow the Subdistrict No. 5 to protect existing wells and continue groundwater withdrawals for irrigation within its boundary. Construction is expected to begin in March 2021.





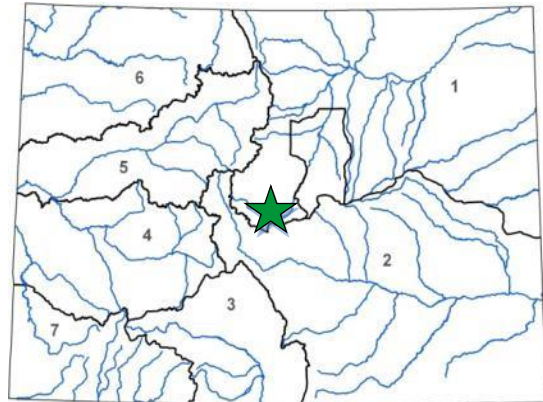


## Headgate Improvements Project

The Tunnel Water Company

March 2021 Board Meeting

L O A N   D E T A I L S	
Project Cost:	\$1,206,000
CWCB Loan (with 1% Service Fee):	\$1,218,060
Loan Term & Interest Rate:	3-yrs @ 0%, 27-yrs @ 1.70%
Funding Source:	Construction Fund
B O R R O W E R   T Y P E	
Agriculture	Municipal      Commercial
21%	4% Low - 26% Mid - 49% High      0%
P R O J E C T   D E T A I L S	
Project Type:	Ditch Rehabilitation
Average Annual Diversions:	18,000 AF



L O C A T I O N	
County:	Larimer
Water Source:	Laramie River
Drainage Basin:	North Platte/South Platte
Division:	1      District: 48

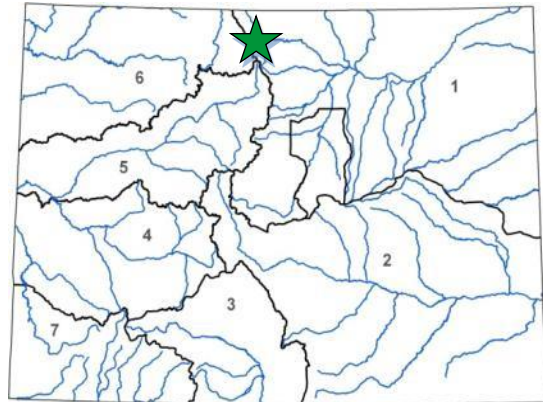
During the unprecedented fire season of 2020, the watersheds supplying water to The Tunnel Water Company (Company) were damaged by the Cameron Peak Fire. The Company is in need of immediate funding to install a self-cleaning trash rack that can reliably remove large fire debris from the headgate before flowing into the Laramie-Poudre Tunnel. This tunnel supplies raw water for the benefit of the Water Supply and Storage Company (WSSC) and Windsor Reservoir and Canal Company (WRCC). WSSC delivers irrigation water to its shareholders, primarily for agricultural irrigation on approximately 40,000 acres lying below the Larimer County Canal. WRCC delivers water to its municipal shareholders via the Soldier Canyon and Bellvue Water Treatment Plants. Construction is expected to begin in the spring of 2021.







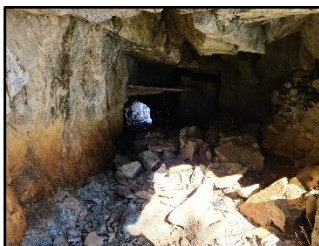
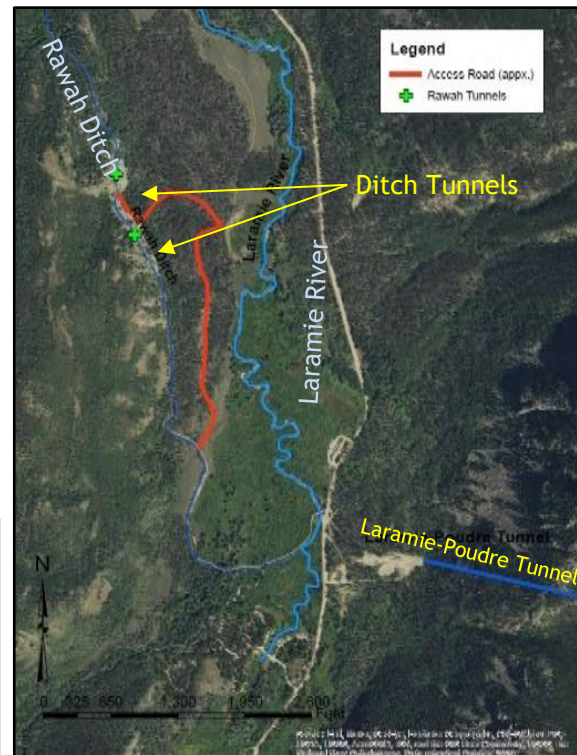
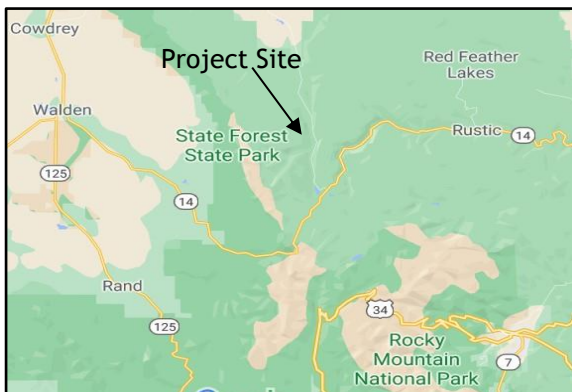
L O A N   D E T A I L S	
Project Cost:	\$2,150,000
CWCB Loan (with 1% Service Fee):	\$2,171,500
Loan Term and Interest Rate:	30 Yrs @ 1.70%
Funding Source:	Construction Fund
B O R R O W E R   T Y P E	
Agriculture	Municipal      Commercial
21%	4% Low - 26% Mid - 49% High      0%
P R O J E C T   D E T A I L S	
Project Type:	Ditch Rehabilitation
Average Annual Diversions:	18,000 AF



L O C A T I O N	
County:	Larimer
Water Source:	Rawah Creek
Drainage Basin:	North Platte/South Platte
Division:	1      District: 48

The Tunnel Water Company (Company) owns and operates the Laramie-Poudre Tunnel (LPT) for the benefit of its two shareholders that include Water Supply and Storage Company (WSSC) and Windsor Reservoir and Canal Company (WRCC). WSSC delivers irrigation water to its shareholders, primarily for agricultural irrigation on approximately 40,000 acres lying below the Larimer County Canal. WRCC delivers water to its municipal shareholders via the Soldier Canyon and Bellvue Water Treatment Plants. It also owns and operates the Rawah Ditch (Ditch) which collects water from Rawah Creek and delivers it to the West Branch of the Laramie River, upstream of the LPT.

The Ditch includes two tunnels, 70 feet long and 90 feet long. At completion of the 2020 diversion season, both tunnels were found to have significant rockfall, and subsequently the Company's engineers concluded that one tunnel was in danger of imminent collapse, while the other would likely collapse within a few years. If either tunnel collapses, the Company would be unable to make water deliveries and would incur significant repair costs. The selected alternative will slip line and grout the tunnel in order to avoid the need for workers to be in tunnels with unpredictable rockfall. Construction is expected to start in the spring of 2021.



Tunnel rockfall.



Unstable conditions inside the North tunnel.



**COLORADO**

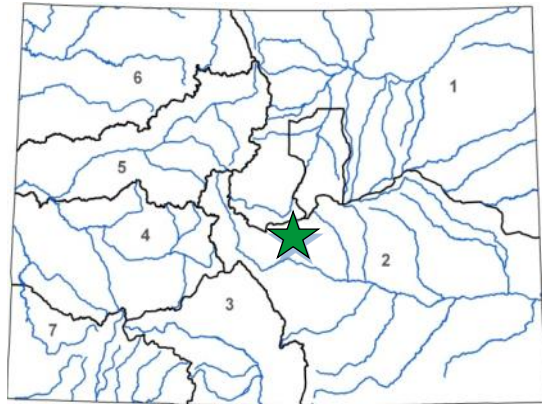
Colorado Water  
Conservation Board  
Department of Natural Resources

## Victor Reservoir No. 2 Dam Rehabilitation

City of Victor

March 2021 Board Meeting

L O A N   D E T A I L S	
Project Cost:	\$512,000
CWCB Loan:	\$375,000
CWCB Loan (with 1% Service Fee):	\$378,750
Loan Term and Interest Rate:	20 Yrs @ 1.25%
Funding Source:	Construction Fund
B O R R O W E R   T Y P E	
Agriculture	Municipal
0%	100% Low - 0% Mid - 0% High
Commercial	0%
P R O J E C T   D E T A I L S	
Project Type:	Dam Rehabilitation
Storage Preserved:	202 AF
Average Annual Diversions:	1,384 AF



L O C A T I O N	
County:	Teller
Water Source:	West Beaver Creek
Drainage Basin:	Arkansas
Division:	2
District:	12

The City of Victor owns and operates the Victor Reservoir No. 2 that serves as a backup supply for the City's municipal system and is the primary supply for the Cripple Creek and Victor (CC&V) Gold Mine.

The dam, originally constructed in 1897, is classified as significant hazard by the State Engineer's Office (SEO) Dam Safety Branch. It includes an inlet structure tower 30-feet from the dam crest. In the spring of 2020 the City performed emergency repairs to stabilize the tower from ice loading that was moving the tower horizontally. This project will provide a long term solution by removing the upper section of the tower and installing a traditional sloped gate operator on the upstream dam embankment, along with a bubbler to limit the formation of ice on the valves inside the intake structure. Additional funding for the Project may be obtained by a Department of Local Affairs grant or the City will use cash reserve funds. Construction is expected to begin in May of 2021 and continue through the summer of 2021.



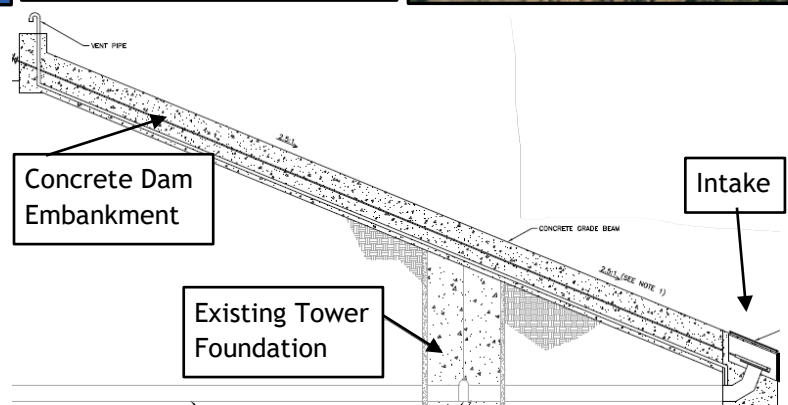
Upper Tower



Victor Reservoir No. 2



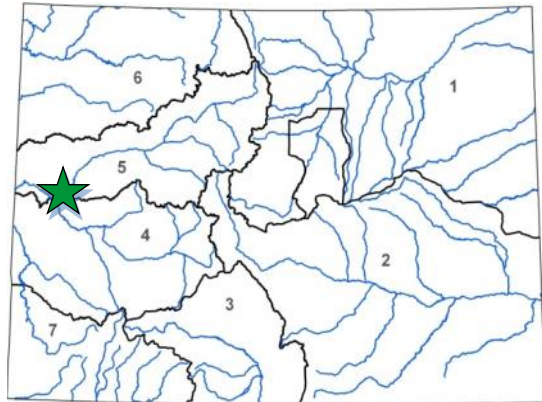
Lower Tower







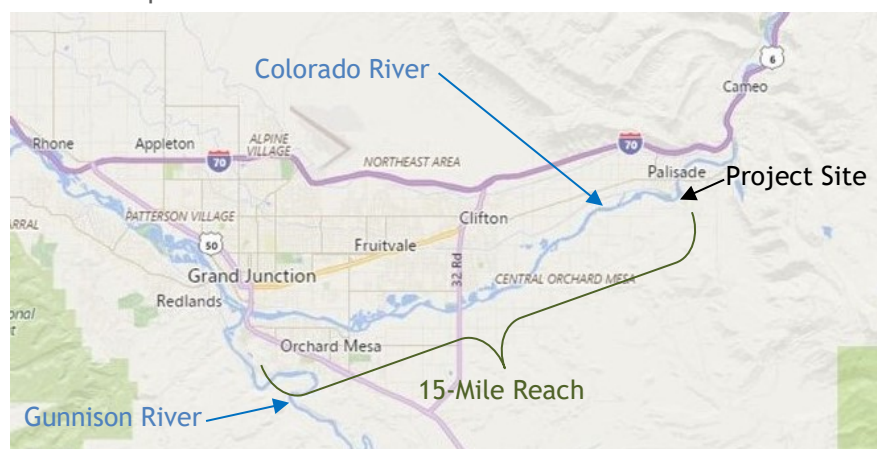
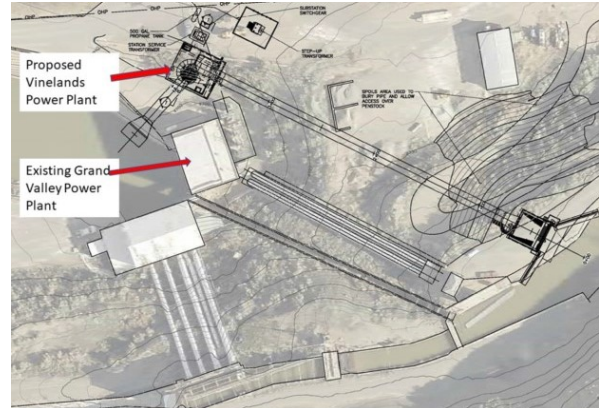
L O A N   D E T A I L S	
Project Cost:	\$9,227,825
CWCB Loan (with 1% Service Fee):	\$1,076,660
Loan Term and Interest Rate:	20 Yrs @ 2.0%
Funding Source:	Severance Tax PBF
Other Funding:	WPGGrant, SCTF, GVVUA, SE, ESRP, Colo Water Trust, GVF, WaterSMART
B O R R O W E R   T Y P E	
Irrigation District	
P R O J E C T   D E T A I L S	
Project Type:	Hydroelectric
Average Annual Power Production:	22,380 MWh
Average Annual Diversions:	63,000 AF



L O C A T I O N			
County:	Mesa		
Water Source:	Colorado River		
Drainage Basin:	Colorado		
Division:	5	District:	72

The Orchard Mesa Irrigation District (District) and Grand Valley Water Users Association (Association) are each seeking a loan to cover a portion of their cost share for construction of a new Vinlands Power Plant (VPP). The VPP will replace the existing Grand Valley Power Plant (GVPP), which was built in the 1930's and is owned by the Bureau of Reclamation (Reclamation). It was originally operated by Public Service Company of Colorado (Xcel Energy) in conjunction with the Cameo coal fired power plant. In 2010 the Association and District took operational control of the GVPP when Xcel decided to cease its operations. The Association and District equally split costs and revenues from the GVPP under a Lease of Power Privilege (LOPP) with Reclamation and a Power Purchase Agreement (PPA) with Xcel Energy. In addition to being a revenue source, the GVPP also serves an important role in providing water to the "15-Mile Reach" which has been designated by the Upper Colorado River Endangered Fish Recovery Program as critical habitat.

The Project is a new hydropower plant to be built adjacent to the existing plant in order to maintain the same environmental benefits while being safer, producing more power, and being more economical to own and operate. The VPP will be constructed and owned by Grand Valley Hydropower, LLC, which will be jointly owned by the Association, District, and the engineering and construction firm, Sorenson Engineering, Inc. The project will combine private capital with grants from federal, state, and non-profit sources, with the loan filling the funding gap for the Association and District, including construction of a new interconnect from the VPP to the power grid. A new LOPP with Reclamation, and a new PPA with Holy Cross Energy will be included.





## COLORADO

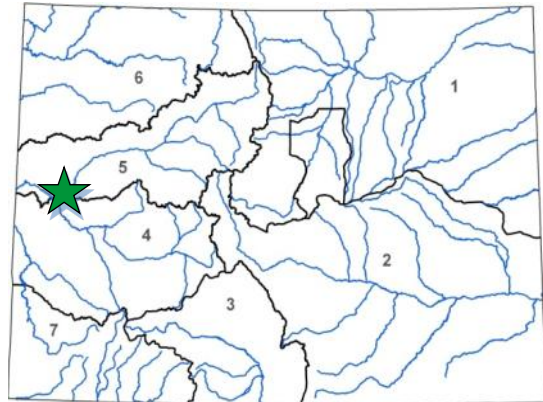
Colorado Water  
Conservation Board  
Department of Natural Resources

## Vinlands Power Plant

### Grand Valley Water Users Association

March 2021 Board Meeting

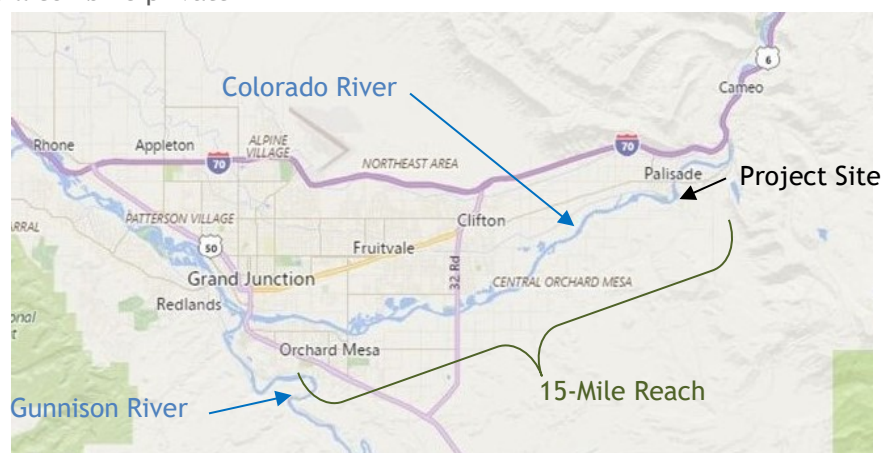
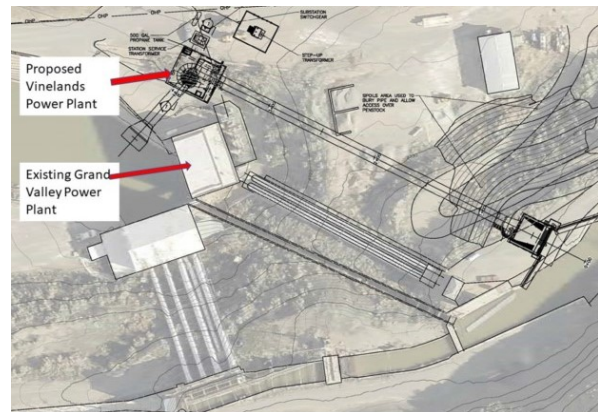
L O A N   D E T A I L S	
Project Cost:	\$9,227,825
CWCB Loan (with 1% Service Fee):	\$1,076,660
Loan Term and Interest Rate:	20 Yrs @ 2.0%
Funding Source:	Severance Tax PBF, WPGGrant
Other Funding:	SCTF, OMID, SE, ESRP, Colo Water Trust, GVF, WaterSMART
B O R R O W E R   T Y P E	
Water Users Association	
P R O J E C T   D E T A I L S	
Project Type:	Hydroelectric
Average Annual Power Production:	22,380 MWh
Average Annual Diversions:	260,000 AF



L O C A T I O N			
County:	Mesa		
Water Source:	Colorado River		
Drainage Basin:	Colorado		
Division:	5	District:	72

The Grand Valley Water Users Association (Association) and Orchard Mesa Irrigation District (District) are each seeking a loan to cover a portion of their cost share for construction of a new Vinlands Power Plant (VPP). The VPP will replace the existing Grand Valley Power Plant (GVPP), which was built in the 1930's and is owned by the Bureau of Reclamation (Reclamation). It was originally operated by Public Service Company of Colorado (Xcel Energy) in conjunction with the Cameo coal fired power plant. In 2010 the Association and District took operational control of the GVPP when Xcel decided to cease its operations. The Association and District equally split costs and revenues from the GVPP under a Lease of Power Privilege (LOPP) with Reclamation and a Power Purchase Agreement (PPA) with Xcel Energy. In addition to being a revenue source, the GVPP also serves an important role in providing water to the "15-Mile Reach" which has been designated by the Upper Colorado River Endangered Fish Recovery Program as critical habitat.

The Project is a new hydropower plant to be built adjacent to the existing plant in order to maintain the same environmental benefits while being safer, producing more power, and being more economical to own and operate. The VPP will be constructed and owned by Grand Valley Hydropower, LLC, which will be jointly owned by the Association, District, and the engineering and construction firm, Sorenson Engineering, Inc. The project will combine private capital with grants from federal, state, and non-profit sources, with the loan filling the funding gap for the Association and District, including construction of a new interconnect from the VPP to the power grid. A new LOPP with Reclamation, and a new PPA with Holy Cross Energy will be included.





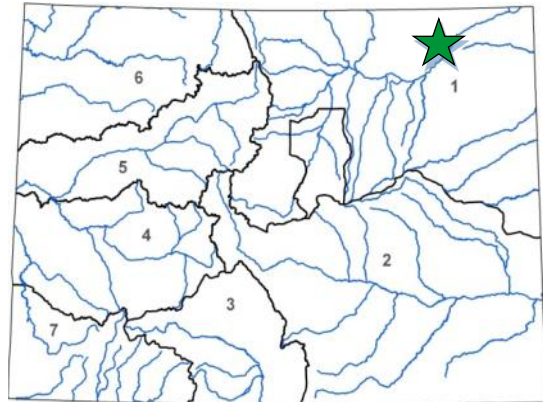


## North Sterling River Diversion Replacement

North Sterling Irrigation District

March 2021 Board Meeting

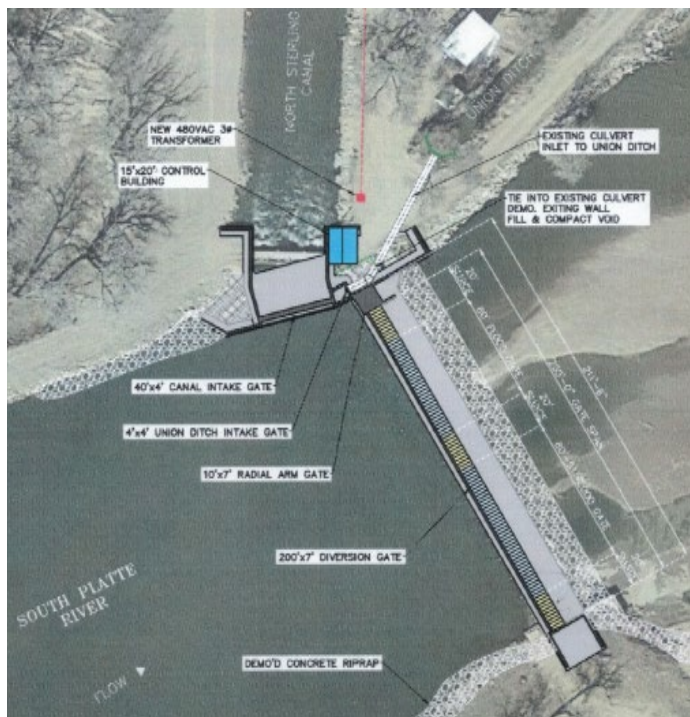
L O A N   D E T A I L S	
Project Cost:	\$3,498,000
CWCB Loan (with 1% Service Fee):	\$3,532,980
Loan Term and Interest Rate:	20 Yrs @ 0.85%
Funding Source:	Severance Tax Perpetual Base Fund
B O R R O W E R   T Y P E	
Agriculture	Municipal      Commercial
99.5%	0% Low - 0.5% Mid - 0% High      0%
P R O J E C T   D E T A I L S	
Project Type:	Ditch Rehabilitation
Average Annual Diversions:	67,922 AF



The North Sterling Irrigation District (District) was created in 1907 by the Board of County Commissioners and currently serves 122 landowners with more than 40,000 acres. Irrigated land in the District's service area produces corn, alfalfa, sugar beets, pinto beans, small grains and feed crops.

L O C A T I O N			
County:	Morgan		
Water Source:	South Platte River		
Drainage Basin:	South Platte		
Division:	1	District:	1

The project will include replacement of the existing 210 foot long diversion structure with a bladder gate, a new inlet headgate, continued service for the Union Ditch, and a new measurement structure. This option will allow for safe passage of flood events, sediment, and ice flow in the winter. During intermediate flows, it will allow for fish passage while a partial pool on the upstream side will benefit aquatic habitat and waterfowl. Benefits for the District include improved safety for employees, and automation including remote control. Construction is expected to begin in the summer of 2021 and be completed before the end of the year.



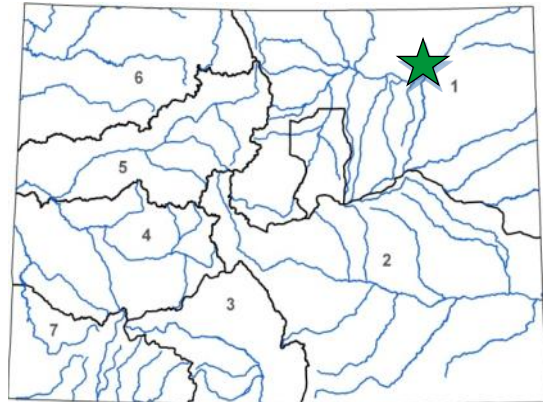


## Diversion Structure Rehabilitation

South Platte Ditch Company

May 2021 Board Meeting

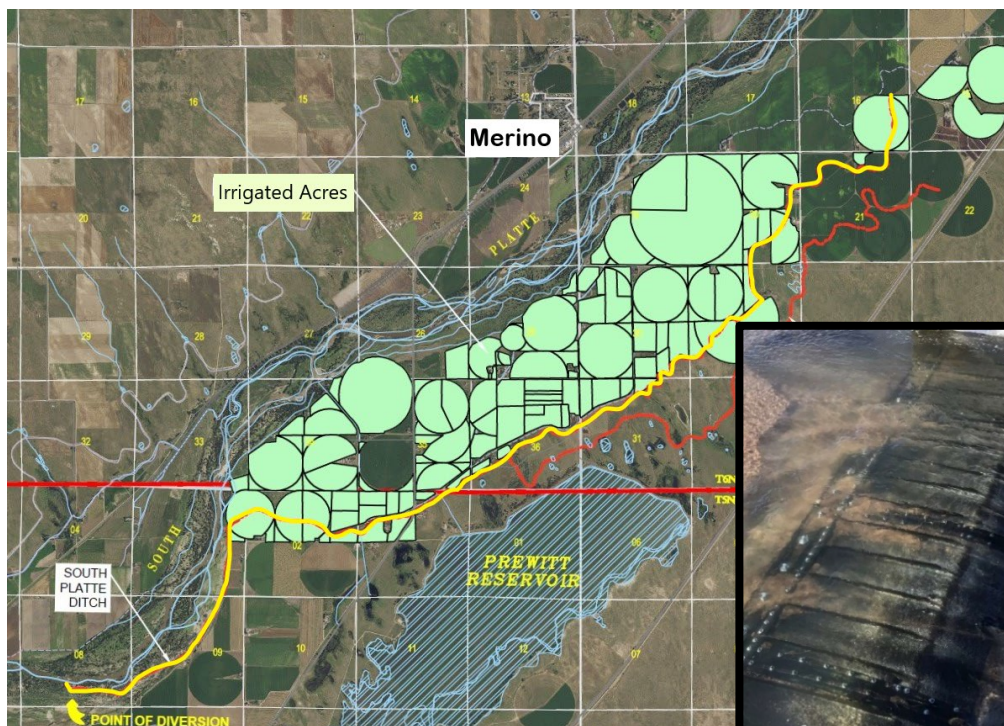
L O A N   D E T A I L S	
Project Cost:	\$1,065,000
CWCB Loan (with 1% Service Fee):	\$1,075,650
Loan Term and Interest Rate:	30 Yrs @ 1.10%
Funding Source: Severance Tax Perpetual Base Fund	
B O R R O W E R   T Y P E	
Agriculture	Municipal      Commercial
99%	0% Low - 1% Mid - 0% High      0%
P R O J E C T   D E T A I L S	
Project Type:	Diversion Structure Rehabilitation
Average Annual Diversions:	15,620 AF



L O C A T I O N			
County:	Washington		
Water Source:	South Platte River		
Drainage Basin:	South Platte		
Division:	1	District:	64

The South Platte Ditch Company (Company) is a mutual ditch company that was incorporated in 1881. It provides direct flow irrigation water to 20 shareholders with approximately 4,400 acres in Washington and Logan counties between Atwood and Sterling. Shareholders grow primarily corn, alfalfa, beans, and sugar beets.

The original diversion structure was constructed in the early 1900s and underwent rehabilitation in 1997 to repair damage resulting from a flood in 1995. The Company also decided to add a bladder gate, radial gate and control building to improve operations. Since then, sand laden water has damaged the bladder gate system, downstream concrete floor, and has eroded the downstream channel between 2 and 3 feet, with the downstream face of the structure now being undermined. This project will replace the bladder gate components, overlay the damaged structure floor, and install a scour pad in the downstream channel floor with energy dissipation improvements. Construction is expected to begin in December 2021 and be completed in the spring of 2022.



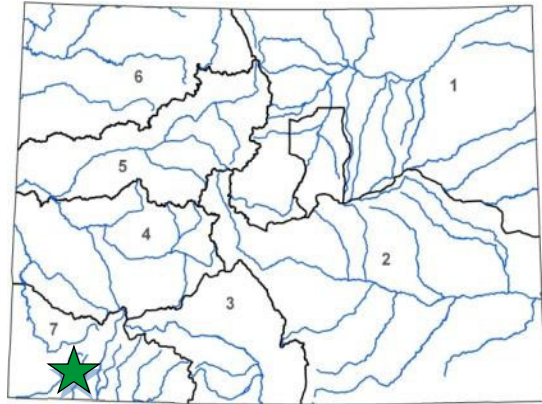




## Redmesa Reservoir Rehabilitation Engineering

Redmesa Reservoir and Ditch Company  
May 2021 Board Meeting

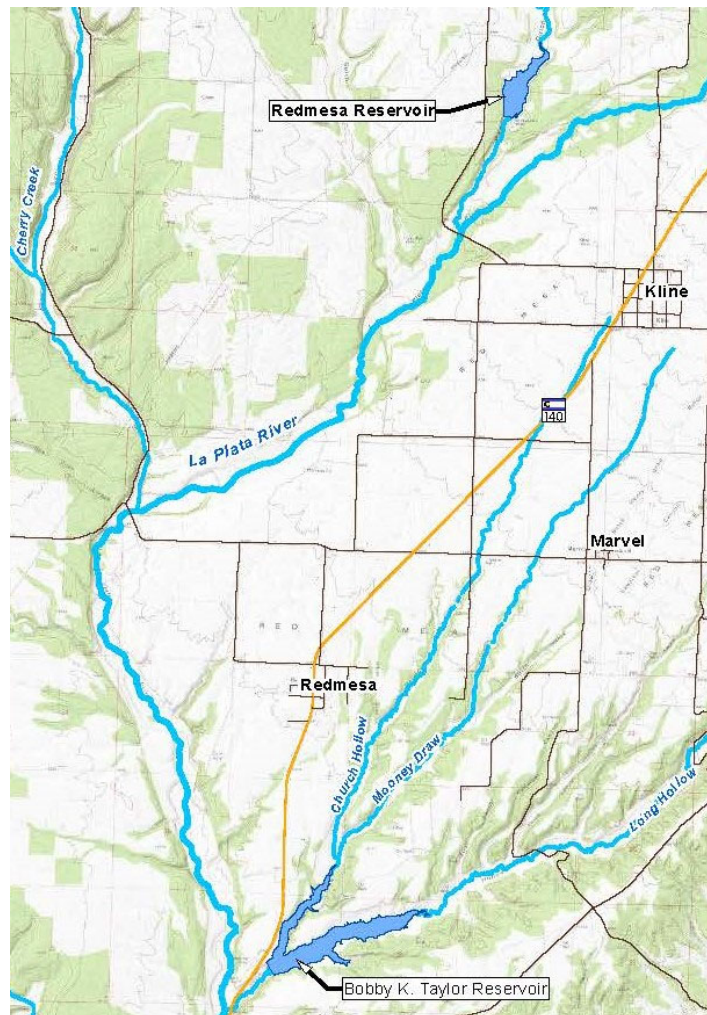
L O A N   D E T A I L S	
Project Cost:	\$582,400
CWCB Loan (with 1% Service Fee):	\$184,830
Loan Term and Interest Rate:	10 Yrs @ 0.05%
Funding Source:	Construction Fund
B O R R O W E R   T Y P E	
Agriculture	Municipal      Commercial
100%	0% Low - <1% Mid - 0% High      0%
P R O J E C T   D E T A I L S	
Project Type:	Reservoir Rehabilitation
Average Annual Diversions:	1,475 AF
Storage Preserved:	1,176 AF



The Redmesa Reservoir and Ditch Company (Company) is a not-for-profit corporation formed in 1923 to own and operate facilities to store and deliver irrigation and domestic water to its stockholders. Currently the Company has 48 stockholders with 1,138 shares and its service area is approximately 3,198 irrigable acres. Given the limited available water, a maximum of 1,600 acres can currently be irrigated. Stockholders primarily grow alfalfa and pasture grass.

L O C A T I O N	
County:	La Plata
Water Source:	Hay Gulch, La Plata River
Drainage Basin:	Southwest
Division:	7      District: 33

Redmesa Reservoir includes an on-channel high hazard dam located 15 miles southwest of Durango. Based on Colorado Dam Safety standards the dam has an undersized spillway. In 2018 a seasonal storage restriction was issued and temporarily waived after emergency repairs were performed. However, a zero storage restriction will be issued if the Company does not comply with the current SEO Dam Safety Compliance Plan. The Company will use loan funds to complete final design and engineering of a rehabilitation project thereby protecting its water rights, including valuable pre-1922 rights. It will also continue to explore enlargement options in order to help perfect a conditional storage right and maximize multi-beneficial outcomes of the project. The Project is expected to be complete in the winter of 2022.

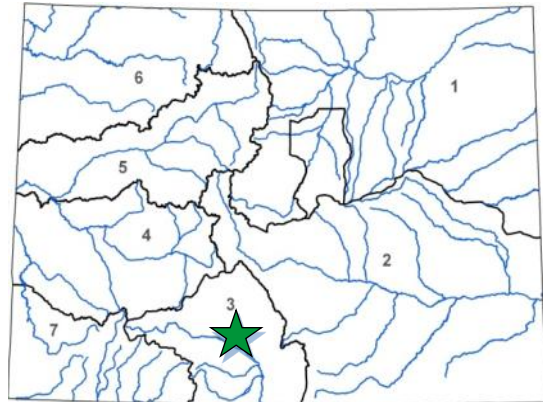




## Billings Ditch Implementation Project

**Billings Ditch Company**  
September 2021 Board Meeting

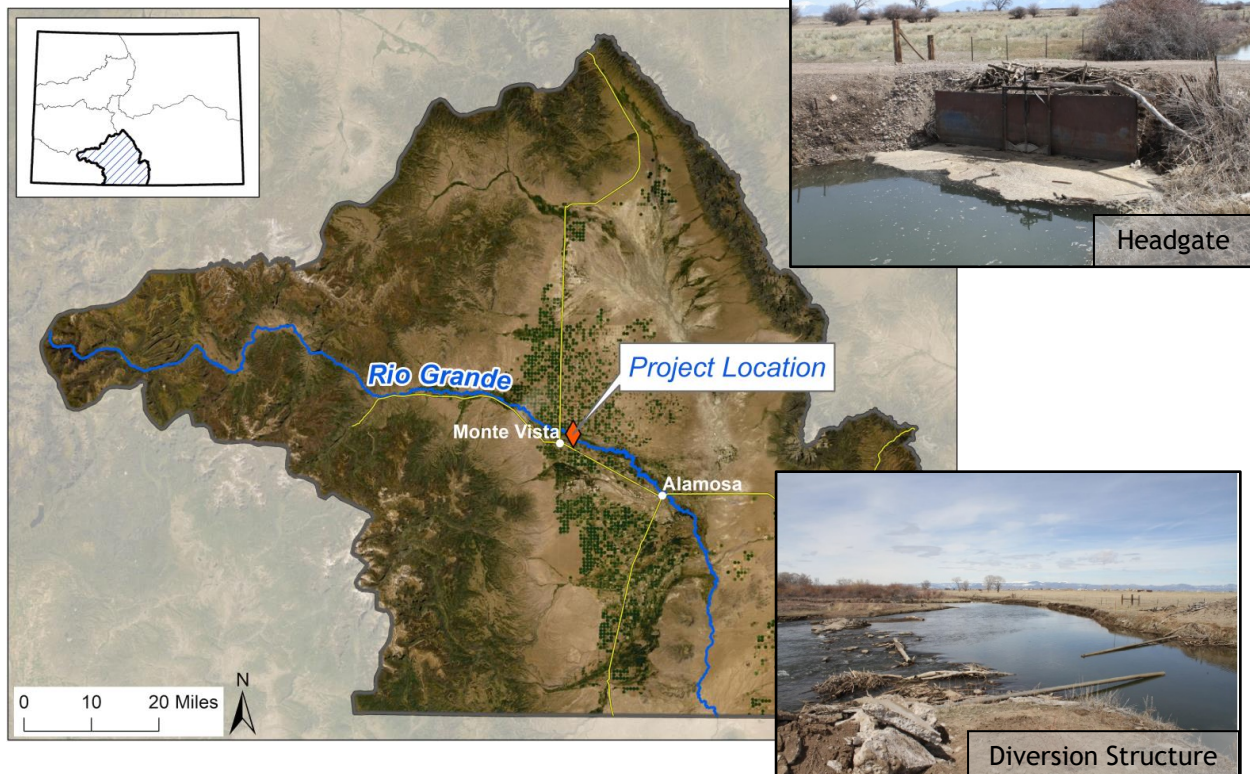
L O A N   D E T A I L S	
Project Cost:	\$719,000
Water Plan Grant:	\$298,000
NAWCA Grant:	\$250,000
CWCB Loan (with 1% Service Fee):	\$172,710
Loan Term and Interest Rate:	30 Yrs @ 1.10%
Funding Source:	Construction Fund
B O R R O W E R   T Y P E	
Agriculture	Municipal      Commercial
100%	0% Low - 0% Mid - 0% High      0%
P R O J E C T   D E T A I L S	
Project Type:	Diversion Structure Rehabilitation
Average Annual Diversions:	4,551 AF



L O C A T I O N	
County:	Rio Grande/Alamosa
Water Source:	Rio Grande River
Drainage Basin:	Rio Grande
Division:	3      District: 20

The Billings Ditch Company (Company) is a non-profit corporation formed in 1884. It currently supplies surface water for irrigation to 11 shareholders east of the City of Monte Vista.

The Company has partnered with the Colorado Rio Grande Restoration Foundation, the fiscal agent for the Rio Grande Headwaters Restoration Project, to organize and raise funds for the project. Funding will come from a combination of this loan, a requested Water Plan Grant, and a North American Wetland Conservation Act grant from the U.S. Fish and Wildlife Service to cover the costs of final design, permitting, and construction. The project will include replacing the aging headgate and diversion structure, rehabilitating the nearby unstable streambanks, and enhancing associated riparian areas. Construction is expected to begin in the fall of 2021 and finish in the spring of 2022.





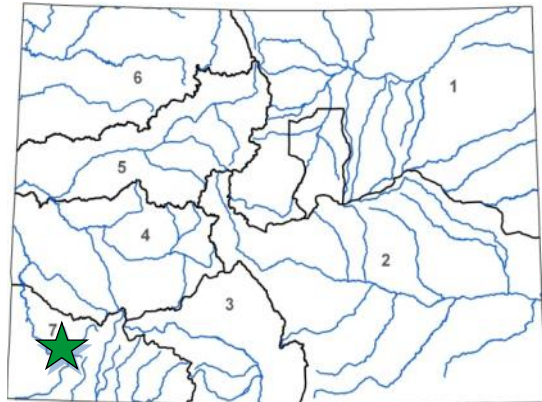


## Ditch Piping and Rehabilitation

Root and Ratliff Ditch Company

November 2021 Board Meeting

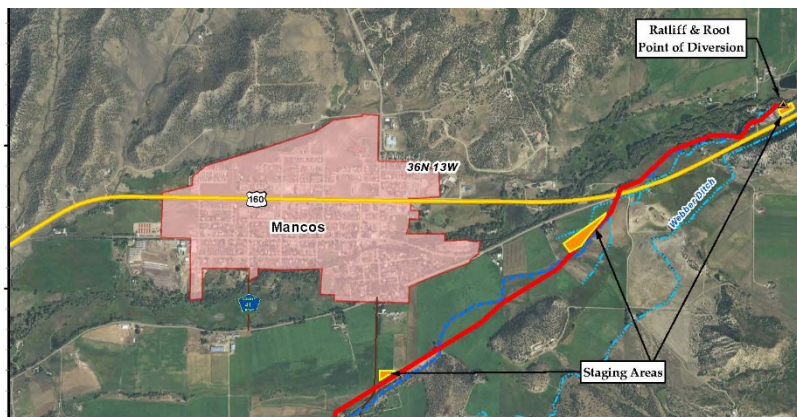
L O A N   D E T A I L S	
Project Cost:	\$3,900,000
BOR Colorado River Basin Salinity Control grant:	\$3,600,000
CWCB Loan (with 1% Service Fee):	\$303,000
Loan Term and Interest Rate:	30 Yrs @ 1.10%
Funding Source:	Construction Fund
B O R R O W E R   T Y P E	
Agriculture	Municipal      Commercial
100%	0% Low - 0% Mid - 0% High      0%
P R O J E C T   D E T A I L S	
Project Type:	Ditch Rehabilitation
Average Annual Diversions:	4,144 AF



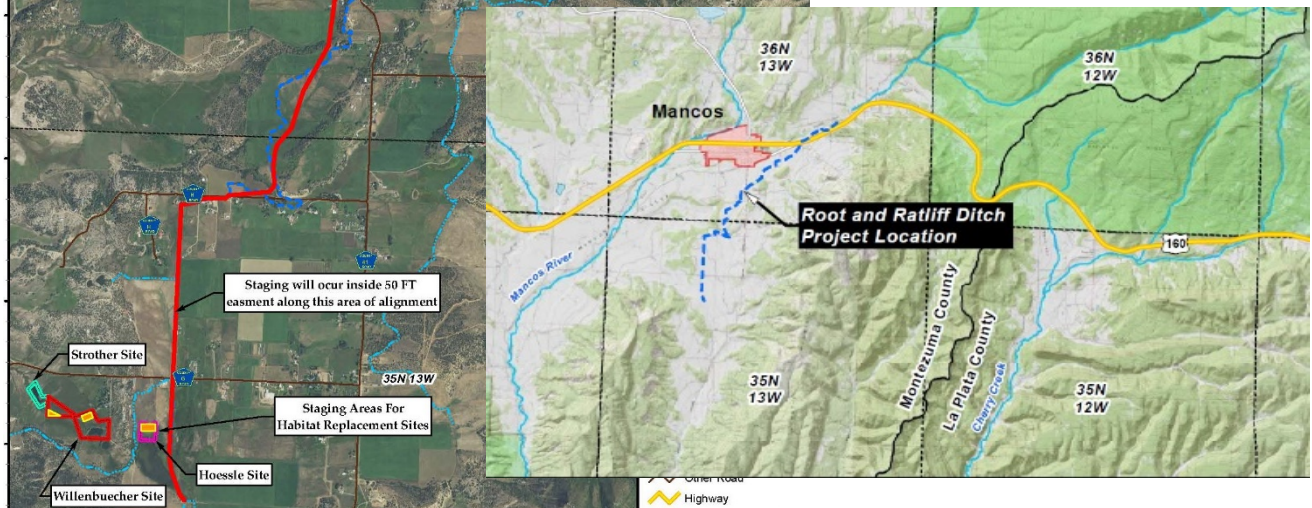
L O C A T I O N	
County:	Montezuma
Water Source:	Mancos River
Drainage Basin:	Southwest
Division:	7      District: 34

The Root and Ratliff Ditch Company (Company) formed in 1947 to operate and maintain the Root and Ratliff Ditch that was originally constructed in the 1870's. The Company currently has 2,200 shares and delivers irrigation water to approximately 1,290 acres growing primarily hay and pasture grass. The Company also delivers stock water to shareholders during the non-irrigation season.

The Project includes rehabilitation of approximately 5.5 miles of unlined ditch with buried pipe.



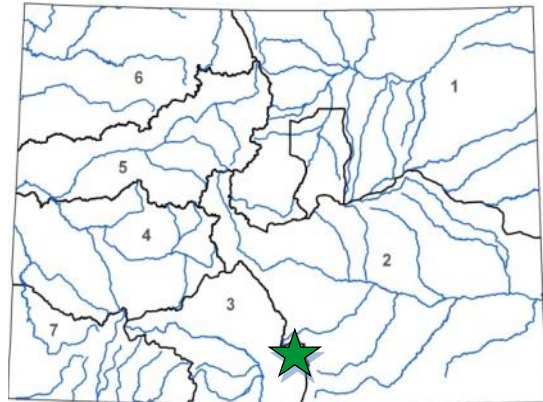
Funding for the Project primarily comes from a Bureau of Reclamation Colorado River Basin Salinity Control Program grant for \$3,600,000. Pricing for the Project increased significantly during the design and engineering phase along with additional construction cost necessitating a loan. Construction began in August of 2021 and is expected to be complete by the spring of 2022.







L O A N   D E T A I L S	
Project Cost:	\$977,000
CWCB Loan (with 1% Service Fee):	\$986,770
Loan Term and Interest Rate:	30 Yrs @ 1.40%
Funding Source:	Construction Fund
B O R R O W E R   T Y P E	
Agriculture	Municipal      Commercial
91%	2% Low - 0% Mid - 0% High      7%
P R O J E C T   D E T A I L S	
Project Type:	Augmentation Pipeline
Average Annual Consumptive Use:	24,888 AF



The Trinchera Groundwater Management Subdistrict (Subdistrict) acting by and through its Water Activity Enterprise was formed in 2018 as a Subdistrict of the Trinchera Water Conservancy District in order to pursue a Ground Water Management Plan as an alternative to individual augmentation plans. The Subdistrict consists of 174 wells used located in the confined and unconfined aquifers.

L O C A T I O N	
County:	Costilla
Water Source:	Groundwater: Rio Grande
Drainage Basin:	Rio Grande
Division:	3      District: 35

The project will construct an augmentation pipeline and associated infrastructure to pump water from 9 irrigation wells within the unconfined aquifer 5.5 miles to the Rio Grande. The wells historically irrigated 780 acres with center pivot sprinklers. The augmentation pipeline will use these wells to offset the Subdistrict's stream depletions. This will allow the Subdistrict to protect existing wells and continue groundwater withdrawals for irrigation within its boundary. The Project is expected to begin in November 2021 and complete by May 1, 2022 when the Subdistrict anticipates the need to replace depletions.

