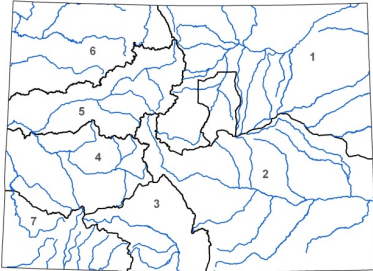




Colorado Watershed Restoration Program Application

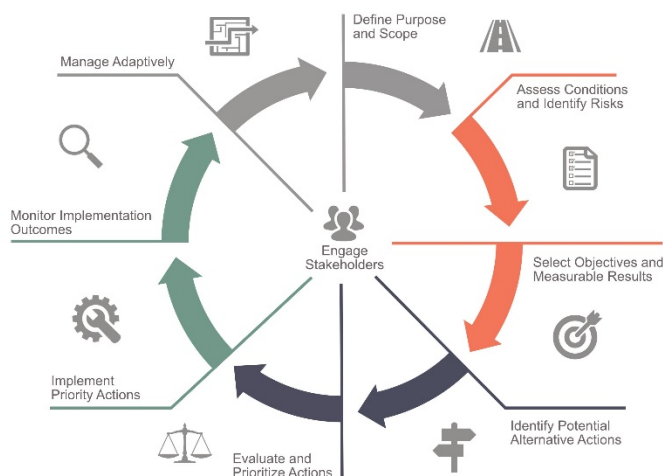


L O C A T I O N	
County/ Counties:	Statewide
Drainage Basin:	Statewide

D E T A I L S	
Total Project Cost:	\$346,412
Colorado Watershed Restoration Program Request:	\$228,727
Recommended amount:	\$228,727
Other CWCB Funding:	\$0
Other Funding Amount:	\$11,250
Applicant Match:	\$106,435
Project Type(s): Planning	
Project Category(Categories): Stream Management Plan (SMP)	
Measurable Result: SMP grant application development, facilitation of implementation, education and outreach for SMP practitioners, continued development of SMP Peer Learning Network	

Since 2017, River Network has played an important role in advancing the scale and effectiveness of stream management plans (SMPs). One of the core aspects of this work has been the leadership of the Colorado SMP Peer Learning Network (PLN) and Resource Library, providing SMP leaders and coalitions around the state with a venue for information sharing, problem solving and peer-learning. This grant request continues and builds upon the PLN and incorporates a new strategic focus based on an assessment of five years of progress of the SMP program. River Network will continue to advance the PLN through coordination of virtual and in-person learning opportunities, update the Resource Library with relevant content, initiate SMPs in high priority locations, and support SMPs to try new methods and approaches. Additionally, the River Network team and the Colorado Water Trust will support SMP leads with adequate technical knowledge and assistance to help enable conditions for their SMPs to include environmental and recreational flow project recommendations as originally intended by the Colorado Water Conservation Board (CWCB) SMP program.

1 Basic SMP Process



Goals for the grant are:

- 1) At least 4 new SMP prioritized implementation projects will apply for CWCB grant funds in both 2022 and 2023.
- 2) River Network will directly support the initiation of five new SMPs over two years that are in high priority locations.
- 3) Work with SMP stakeholders to ensure recommendations from completed SMPs are making progress towards implementation
- 4) SMP practitioners feel adequately supported and connected to their peers.
- 5) At least 2/3 of active SMP coalitions will participate in Peer Learning Network activities in 2022 and 2023.

- 6) Feedback will show at least 75% of attendees report significant knowledge gains.
- 7) Ensure SMPs continue to generate attention and positive momentum.

COLORADO WATERSHED RESTORATION PROGRAM GRANT APPLICATION
September 2021



Stream Management Plan Peer Learning Network 2022-24

Project Proposal Summary Sheet.....	P. 1
Grant Application & Scope of Work.....	P. 2
Budget.....	P. 12
Attachment A (Letters of Support).....	P. 14

PROJECT PROPOSAL SUMMARY SHEET

Project Title: Stream Management Plan Peer Learning Network 2022-24

Project Location: Statewide

Grant Type: Stream Management Plan

Grant Request/Amount \$228,727

Match Funding: \$106,435

In-kind Match Funding \$11,250

Project Sponsor(s) : River Network

Contact person name, email address, and phone number: Nicole Seltzer,
nseltzer@rivernetwork.org, 970-744-0324

Brief description of the project:

Since 2017, River Network has played an important role in advancing the scale and effectiveness of stream management plans (SMPs). One of the core aspects of this work has been the leadership of the Colorado SMP Peer Learning Network (PLN) and Resource Library, providing SMP leaders and coalitions around the state with a venue for information sharing, problem solving and peer-learning. This grant request continues and builds upon the PLN and incorporates a new strategic focus based on an assessment of five years of progress of the SMP program. River Network will continue to advance the PLN through coordination of virtual and in-person learning opportunities, update the Resource Library with relevant content, initiate SMPs in high priority locations and support SMPs to try new methods and approaches. Additionally, the River Network team and the Colorado Water Trust will support SMP leads with adequate technical knowledge and assistance to help enable conditions for their SMPs to include environmental and recreational flow project recommendations as originally intended by the Colorado Water Conservation Board (CWCB) SMP program.

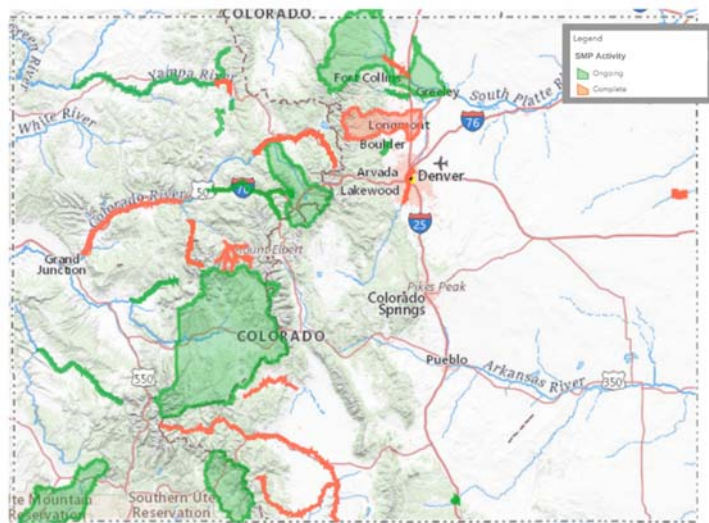
1) Qualifications Evaluation

Identify the lead project sponsor and describe the other stakeholders' level of participation and involvement

River Network will lead this project in partnership with Colorado Water Conservation Board staff, the many coalitions in Colorado that are pursuing SMPs, and the Colorado Water Trust.

Since 2016, River Network has lead a project to help CWCB and Colorado communities meet the Water Plan goal of 80 percent of locally prioritized rivers covered by Stream Management Plans (SMPs) by 2030. CWCB staff has been very involved in this work by providing guidance on which coalitions to support, giving input into SMP scopes of work to ensure they exceed the guidance requirements, and actively participating in presentations, workshops and written content development. This important partnership is critical to future success of this work. In addition, there are approximately 30 water professionals in Colorado that have lead SMP development in different basins, as shown in the map.

While these individuals are a key audience for this proposal, they are also the subject matter experts. They contribute their experiences and lessons learned, give their time to mentor new SMP leads, and help review best practices documentation. River Network sees itself at the coordinator of this proposal, but it is the participation of CWCB staff and SMP leads that will truly make the work successful.



The Colorado Water Trust will lend their significant expertise in supporting environmental flow targets and utilizing legal and market based mechanisms to restore water to streams to this project in two ways: 1) providing technical support to up to 5 SMPs during either the SMP scoping/initiation phase or the assessment/objective setting phase to successfully integrate opportunities to reach environmental flow targets into an SMP, and 2) conducting basic outreach to SMP practitioners on the methods that can be used to develop and meet environmental flow targets.

Specify in-kind services and cash contributions (match) amount for the proposed activities. See section B.2 of the grant program guidance to determine match funding requirements. Discuss whether other funding sources are secured or pending.

During this time of transition as the Watershed Restoration Program grants are being rolled into Colorado Water Plan grants, CWCB's Chris Sturm verbally communicated to River Network that we should use the CWP match requirements of 25%, rather than the Watershed Restoration program requirements of 50%. This proposal's budget reflects that conversation.

River Network: \$101,435 (cash match, pending) and \$5,000 (cash match, secured)

River Network is currently awaiting final renewal of its primary foundation grants, which includes \$101,435 in cash match for this project. Consideration and approval is slated for

mid-November 2021. In addition, we have \$5,000 of secured donations that will support this project.

Colorado Water Trust: \$11,250 (in-kind match, secured)

2) Organizational Capability

What is the applicant organization's history of accomplishments in the watershed? Provide several past project or planning examples. List partner organizations and agencies with whom applicant worked to implement past projects or planning efforts.

River Network has established itself as a leading advocate for the development of stream management plans. In 2016, River Network set out to understand and remove the obstacles to producing robust plans. The research found that a number of the coalitions interested in stream management planning did not have the capacity to initiate stakeholder processes, develop the technical scopes of work, or acquire needed matching funds. River Network's work to enlarge the pipeline of local coalitions that are interested, ready and capable of undertaking stream management plans has been successful. It resulted in direct assistance to launch ten SMPs, accounting for almost 50% of the SMP grant funds CWCB distributed from 2017-20. In 2021, River Network and the Colorado Water Conservation Board (CWCB) [compiled the accomplishments of the first five years of the SMP program](#), along with recommendations for the next five years.

In 2018, River Network formally launched a Peer Learning Network (PLN) for those working on SMPs. This network of professionals working on SMPs has improved planning outcomes through collecting and sharing best practices and connecting practitioners to each other. Through annual surveys and interviews of the SMP leads, River Network has collected best practices and innovative approaches, and tracked the progress of SMPs throughout the state. In 2020 River Network launched an outcome tracking tool to begin collecting data on the various outcomes that SMPs have achieved.

In addition to direct assistance to coalitions, River Network has increased interest in and knowledge of SMPs. The Colorado SMP Resource Library (coloradosmp.org) was completed in 2019, which is kept up to date with best practices and case studies for all phases of a SMP. River Network continues to work with CWCB staff to conduct basic outreach on SMPs (such as an SMP 101 webinar held in August 2021 with over 70 attendees).

The Colorado Water Trust has brought its staff's expertise to Stream Management Planning in a number of ways in the last five years, including presenting at [Peer Learning Network trainings](#) on establishing environmental flows and supporting SMP coalitions in the Yampa, Colorado, and San Miguel river basins as they work to set and meet flow targets, and contributing to state-level conversations about how to improve the outcomes of SMPs.

What level of staffing will be directed toward the implementation of the proposed project/planning effort? Discuss the number of staff and amount of time dedicated for the project. Will volunteers be utilized, and if so, how? Include brief resumes for each member of the active project team.

River Network's SMP team is made up of Nicole Seltzer, Mikhaela Mullins and contractors Kim Lennberg (Alba Watershed Consulting) and Stacy Beaugh (Strategic By Nature). River Network

dedicates .65 FTE across two staff positions, and Kim and Stacy add an additional .15FTE. The Colorado Water Trust will dedicate .05 FTE to Tasks 3 and 4.

Nicole Seltzer, River Network

Nicole is the Colorado River Basin Program Director at River Network, leading efforts to strengthen the influence and effectiveness of local coalitions in Colorado and the Western U.S. through knowledge sharing, mentorship and breaking down silos. Prior to joining River Network, Nicole was Executive Director of Water Education Colorado and handled public affairs for the Northern Colorado Water Conservancy District.

Mikhaela Mullins, River Network

Mikhaela is the Science and Policy Associate at River Network and helps lead and support the Peer Learning Network. Mikhaela has experience working in agriculture and at the intersection of agriculture, public health, equity, and conservation. She has implemented community and environmental public health programs, led programmatic evaluation efforts, and delivered professional development opportunities.

Stacy Beaugh, Strategic By Nature

Stacy Beaugh is the President and co-owner of Strategic By Nature. Stacy provides leadership, strategic planning, fundraising, and organizational development support for community stakeholder groups, local governments and nonprofits collaborating to have positive outcomes for natural resources issues. Prior to founding Strategic By Nature, Stacy was the Executive Director of RiversEdge West. Stacy provides coordination and facilitation support for the PLN.

Kim Lennberg, Alba Watershed Consulting

Kim Lennberg is the founder and owner of Alba Watershed Consulting and has 17 years of experience investigating a range of environmental science and policy subjects, specializing in using an interdisciplinary approach to watershed science and characterization. Kim provides technical support for the PLN, Resource Library and is the lead developer of the SMP Outcome Tracking database.

Kate Ryan, Colorado Water Trust

Kate is Colorado Water Trust's Senior Staff Attorney and Director of Programs. She brings 15 years of experience practicing Colorado Water law to inform project development and legal work for the Water Trust. She also obtained a master's degree in geography at the University of Colorado and worked as an associate scientist at the National Snow and Ice Data Center.

Tony LaGreca, Colorado Water Trust

Tony is a Project Manager for the Colorado Water Trust, where he leads numerous stream restoration projects and frequently partners with agricultural producers. He earned undergraduate and graduate degrees in geography from the University of Colorado before moving to the Klamath basin in Oregon. At the Klamath Tribes, he directed research and monitoring programs, and worked with stakeholders to develop watershed scale restoration strategies. Later, he went to work for Trout Unlimited and implemented numerous stream restoration projects designed to benefit ESA listed species and native trout.

Demonstrate that the project budget and schedule are realistic. Please use the budget/timeline spreadsheet attached to the application. Please note that the start date will take place after funding awards are announced and grants are contracted.

The work laid out in this proposal runs from July 2022 through June 2024. Based upon the last several years of effort and expenses to run the Peer Learning Network and coalition capacity building work, River Network is confident that the proposed tasks can be completed on-time and on-budget. Peer Learning Network activities are currently fully supported through July 1, 2022 when an existing Colorado Water Plan grant ends, and River Network has been actively fundraising for non-state support of this work.

3) Proposal Effectiveness

What information is the project sponsor using to develop the proposed plan or project? Include any relevant information regarding existing watershed plans, stream management plans, geomorphic assessments, flood studies, fire protection plans, riparian conditions assessments, aquatic/terrestrial habitat conditions, wildlife studies, and/or river restoration reports.

River Network conducted surveys of watershed groups and SMP practitioners in 2017, 2019 and 2020 to document the goals, approaches, tasks, and successes and challenges of current and completed SMPs. This work is documented in the SMP Resource Library (coloradosmp.org) and the recently released memo *Stream Management Plans in Colorado: Progress at Five Years*. This proposal reflects what was heard and how River Network can better support coalitions undertaking SMPs throughout Colorado.

Discuss the multiple objective aspects of the project and how they relate to each other. Describe similar activities in the watershed and how this project or plan complements but does not duplicate those activities. Multiple objectives may include (but are not limited to) channel stabilization, riparian re-vegetation, habitat improvement, recreation opportunity enhancement, natural hazard reduction, flood mitigation, water supply delivery improvement, fish migration improvement, ephemeral/intermittent channel stabilization, and upland erosion mitigation.

The overall goal of this work is to support the emergence of a more effective, capable and connected network of coalitions across Colorado that are interested, ready and capable of undertaking effective stream management plans. The objectives of this grant proposal are to:

Objective 1: Demonstrate effectiveness of SMPs and grant funding.

Objective 2: Create positive energy around SMPs.

Objective 3: Support an effective and connected network of coalitions that are interested, ready and capable of undertaking SMPs.

Objective 4: Increase the currently small number of SMPs that are using innovative practices to improve the state of practice and considering the context of larger state policy discussions.

Objective 5: Continue momentum by ensuring SMP applications are submitted to CWCB each year.

The outcomes of this work, more and better stream management plans, is inherently multi-objective because a well done SMP produces a series of actions that benefit water users, wildlife, recreation economies and the environment. SMPs allow for identification and prioritization of environmental and recreational goals within a legal and administrative framework that mostly exists to support consumptive uses. Because a majority of

recommended actions are voluntary and require support and participation from water users and managers, SMPs must speak to the objectives of those stakeholders to have any chance of implementation.

Describe the proposed monitoring or implementation plan. How will the project or plan measure success of its objectives?

To assess overall success, River Network has the following goals and monitoring plan:

Goal	Monitoring Plan
1) At least 4 new SMP projects will apply for CWCB grant funds in both 2022 and 2023	The number of stream management plan grant applications received by CWCB in 2022-24, and the number of potential applications in future years
2) River Network will directly support the initiation of five new SMPs over two years that are in high priority locations	The number and overall dollar amounts of SMPs directly supported by River Network in high priority locations
3) Recommendations from completed SMPs are making progress towards implementation	The number, type and dollar amounts of recommendations resulting from completed SMPs
4) SMP practitioners feel adequately supported and connected to their peers	Feedback from PLN activity attendees; annual SMP leads interviews; On-line Community participation
5) At least 2/3 of active SMP coalitions will participate in Peer Learning Network activities in 2022 and 2023. 6) Feedback will show at least 75% of attendees report significant knowledge gains	Attendance and feedback from PLN workshop, field trip and webinar attendees
7) SMPs continue to generate attention and positive energy	Website metrics for the SMP Resource Library; Number of outreach activities conducted (articles, presentations, etc)

Scope of Work

GRANTEE: River Network

FISCAL AGENT: River Network

PRIMARY CONTACT: Nicole Seltzer

ADDRESS: P.O. Box 21387, Boulder, CO 80308

PHONE: 970-744-0324

PROJECT NAME: Stream Management Plan Peer Learning Network 2022-24

GRANT AMOUNT: \$228,727

INTRODUCTION AND BACKGROUND

Since 2017, River Network has played an important role in advancing the scale and effectiveness of stream management plans (SMPs). One of the core aspects of this work has been the leadership of the Colorado SMP Peer Learning Network (PLN) and Resource Library, providing SMP leaders and coalitions around the state with a venue for information sharing, problem solving and peer-learning. This grant request continues and builds upon the PLN and incorporates a new strategic focus based on an assessment of five years of progress of the SMP program. River Network will continue to advance the PLN through coordination of virtual and in-person learning opportunities, update the Resource Library with relevant content, initiate SMPs in high priority locations and support SMPs to try new methods and approaches. Additionally, the River Network team and the Colorado Water Trust will support SMP leads with adequate technical knowledge and assistance to help enable conditions for their SMPs to include environmental and recreational flow project recommendations as originally intended by the Colorado Water Conservation Board (CWCB) SMP program.

OBJECTIVES

Objective 1: Demonstrate effectiveness of SMPs and grant funding.

Objective 2: Create positive energy around SMPs.

Objective 3: Support an effective and connected network of coalitions that are interested, ready and capable of undertaking SMPs.

Objective 4: Increase the currently small number of SMPs that are using innovative practices to improve the state of practice and considering the context of larger state policy discussions.

Objective 5: Continue momentum by ensuring SMP applications are submitted to CWCB each year.

TASKS

TASK 1 – SMP Peer Learning Network Activities

Description of Task

The Peer Learning Network (PLN) is consistently cited by SMP practitioners as critical to implementation of quality, effective SMPs. The PLN builds relationships between SMP practitioners and supporting organizations (e.g., NGOs and technical experts) and provides exchange of information on how to best accomplish SMPs. This task will support events and activities of the PLN for the grant term including peer calls, field trips/site visits, in-person workshops, maintenance of the Colorado SMP Resource Library and online community moderation.

Method/Procedure

River Network will use a variety of activities to support the Peer Learning Network, including:

- Virtual Peer Learning Meetings: Facilitate a minimum of three virtual peer meetings per year

for SMP leads to discuss notable challenges, approaches, tools/resources, or conditions for success as they implement their SMPs.

- **In-person Workshops:** A half-day training for current SMP leads in conjunction with the Sustaining Colorado Watersheds Conference in October 2022 and 2023. This training will provide an opportunity for SMP leads to network, share best practices, collectively problem-solve, and learn about innovative approaches from each other. This workshop will also provide the opportunity for CWCB staff and SMP leads to hear from one another.
- **Field Trips/Site Visits:** Field trips will take place in late spring or early summer in 2022 and 2023 for current and potential SMP leads, as well as other interested parties. The field trips will explore assessment results, demonstration projects and/or implementation of SMPs.
- **Survey:** In 2023 River Network will distribute a survey to all SMP leads to track the progress of SMPs, capture innovative approaches and best practices, and to learn what resources and/or support SMP leads need.
- **Resource Library:** The Colorado SMP Resource Library continues to be cited as a resource for SMP leads and their teams. River Network will continue to regularly update the website with resources and content to maintain the relevancy of the resource library.
- **Online Community:** The SMP Online Community is a central hub for SMP leads to share resource, ask questions, learn about opportunities and PLN events. River Network will continue to moderate the online community and encourage SMP leads, and their teams, to actively engage with one another through this platform.

Deliverables

- Six virtual peer meetings for SMP practitioners
- Two workshops in conjunction with the Sustaining Colorado Watersheds Conference
- Two site visits
- One survey that will be used to inform peer call, workshop, and site visit topics as well as provide content to update the Resource Library
- Updates to the website in 2023, utilizing the results of the 2023 survey
- Updates to the SMP Factsheets in 2023, hosted on the Resource Library
- Actively moderate the online community and post resources, opportunities, events and other relevant information.

TASK 2 – SMP Peer Learning Network Evaluation

Description of Task

Through past annual surveys, post-peer call evaluations, and informal qualitative feedback, River Network understand that the PLN is of value to SMP leads. However, there is room for the PLN to improve. This task will support efforts to evaluate the impact and effectiveness of the PLN and will explore: 1) have SMP leads increased their knowledge about various topics related to SMPs, 2) has their confidence about engaging on a particular topic, tool, approach or with a particular set of stakeholders grown, and 3) have SMP leads applied the knowledge gained to their work. Other aspects will be evaluated; however, River Network has found that these are the most important aspects to determine the value of the PLN.

Method/Procedure

To control for any internal biases, River Network will hire an outside evaluation consultant to complete this task. The consultant will design an evaluation study that will utilize survey tools to collect quantitative and qualitative feedback on the impact and effectiveness of the Peer Learning Network. Additionally, the consultant will conduct interviews with SMP leads to supplement any remaining knowledge gaps.

Deliverables

- Report of findings and recommendations for improvement

TASK 3 – Outreach & Education

Description of Task

Outreach is important to ensure continued interest in SMPs and fill the pipeline with new coalitions each year, as well as share how CWCB grant funding is making a difference. Through educational outreach, River Network aims to build positive energy around SMPs to encourage new coalitions to undertake SMPs. In 2021 River Network and CWCB hosted the first SMP 101 webinar and had over 70 participants. Given the initial webinar's success, the plan is to continue to host SMP 101 webinars for those who are interested in learning more about SMPs, how to begin the SMP process, and to share resources and information about CWCB grant funding for SMPs.

Additionally, River Network aims to normalize agriculture, one of the largest water users and thus stakeholders in SMPs, to be involved in river health. Since 2019 River Network has worked with agricultural content strategists to develop and publish stories, and has partnered with the Colorado Ag Water Alliance to develop short videos about the benefits of SMPs to agriculture. This proposal builds on these past successes and continues to partner with Colorado agricultural organizations to share stories to agricultural producers about the benefits of participating in SMPs.

In addition to outreach on the basics of SMPs and their successes, the Colorado Water Trust will conduct outreach on flow protection and restoration strategies to SMP practitioners and interested parties. The 2021 memo *Stream Management Plans in Colorado: Progress at Five Years* found that only 7% of SMP project recommendations to date include environment and recreation flow targets, a number that does not align with the original intended outcome of the SMP program. River Network is currently hosting a workshop series (Jan – June 2022) to investigate this discrepancy to understand where the barriers and opportunities are to further advance flow target recommendations, but there is no need to wait for those recommendations to know that increased education and training to SMP coalitions on the how and why of environmental flow targets is a valuable task.

Method/Procedure

- SMP 101 webinars in 2022 and 2023
- Share success stories that focus on agricultural producers/stakeholders and their involvement in multi-benefit projects that resulted from SMPs. Stories will be told through written articles, short videos, social media, or other outlets.
- At least 6 presentations to SMP coalitions or interested stakeholder groups by the Colorado Water Trust on how and why to incorporate environmental flow targets into SMP processes.

Deliverable

- Two SMP 101 webinars

- Publish four stories and/or videos
- Six presentations on how local entities can develop and meet environmental flow targets

TASK 4 – Support Strategic Development of SMPs

Description of Task

This task will support efforts to implement priority recommendations from the 2021 memo *Stream Management Plans in Colorado: Progress at Five Years*, including prioritizing SMPs and direct support to coalitions in high priority areas to initiate SMPs and/or incorporate new methods and approaches.

Method/Procedure

SMP prioritization

Under a prior CWCBC grant, the River Network team is developing a methodology to prioritize locations of new SMPs through workshops with statewide NGOs, Environmental and Recreation Basin Roundtable representatives and state agency staff from CPW and CWCBC. Those workshops are scheduled for Jan-June 2022. To maintain momentum, the methodology developed during those workshops will be implemented in this task, resulting in a set of high priority locations where state agencies and statewide NGOs can direct their resources to support initiation of SMPs by local coalitions.

The methodology will attempt to utilize existing high-level statewide tools like the flow tool, FACE Hazards tool, Non-Consumptive Needs Assessment maps and Colorado Natural Heritage Program Watershed Toolbox, and will include analysis of known environmental water gaps, known areas of high species or ecosystem conservation value, existence of a potentially capable local coalition, and potential future economic impacts of flood, drought, and wildfire, among other factors. Implementation of the methodology will involve significant data analysis, compilation of spatial data layers and report writing. River Network will hire a qualified consultant team to complete this work.

Direct support to coalitions

River Network's early assistance to coalitions as they convene stakeholders, set goals, and scope tasks has incubated 10 SMPs since 2017 that will implement projects to protect or restore flows and achieve other river health benefits. These projects make measurable progress in implementing Colorado's Water Plan, and would likely not have happened without River Network's assistance, as documented in the 2021 memo *Stream Management Plans in Colorado: Progress at Five Years*.

The focus of this work in 2022-24 will be on initiating SMPs in high priority locations and supporting SMPs to try new methods and approaches, including use of Fluvial Hazard Zone mapping to understand risk to infrastructure and property, integration of climate resilience planning to anticipate future drought and wildfire risk, and developing environmental flow targets.

Stream Management Plans are led by local entities, but state agencies and statewide NGOs play an important role by providing staffing capacity, funding, technical expertise and stakeholder relationships. River Network and the Colorado Water Trust will team up to continue playing this important support and technical assistance role. Colorado Water Trust can provide guidance regarding development of realistic and actionable flow-based objectives and potential legal mechanisms local entities may pursue to protect and/or restore flows. Direct support will be

provided through a combination of methods, depending upon the needs of each coalition, including: pass through grants for technical support or staff capacity, and direct technical support from the River Network team and/or the Colorado Water Trust.

Deliverables

- Prioritized list of SMP candidates
- At least 5 grant applications for SMPs from the high priority list

TASK 5 – Project Coordination

Description of Task

River Network will ensure completion of all tasks, including project administration and reporting, and ensure that the project is implemented on-time and within budget. River Network will also facilitate effective collaboration among team members.

Method/Procedure

- River Network will ensure there are regular internal meetings between the staff and contractor teams, and CWCB staff as needed
- River Network will provide financial accounting services and fund disbursement.
- River Network will create grant progress reports every six months.
- River Network will develop a Final Report to document all work and report progress against goals.

Deliverables

- 6-month grant progress reports that include financial statements.
- Final Report summarizing the project and documenting how it was completed

Budget and Schedule

Prepared Date: 11/01/2021

Name of Applicant: River Network

Name of Water Project: Stream Management Plan Peer Learning Network 2022-24

Project Start Date: 07/1/2022

Project End Date: 6/30/2024

Task No.	Task Description	Task Start Date	Task End Date	Grant Funding Request	Match Funding			Total
					River Network/WFF	River Network/donor	Colorado Water Trust	
1	Peer Learning Network Activities	7/1/2022	6/30/2024	\$ 48,507	\$ 20,926			\$ 69,433
2	Peer Learning Network Evaluation	1/1/2023	6/30/2023	\$ 20,694	\$ 12,697			\$ 33,391
3	Outreach	7/1/2022	6/30/2024	\$ 31,563	\$ 3,765	\$ 5,000	\$ 4,500	\$ 44,828
4	Strategic Implementation	7/1/2022	6/30/2024	\$ 70,278	\$ 41,647		\$ 6,750	\$ 118,675
5	Coordination	7/1/2022	6/30/2024	\$ 16,142	\$ 5,759			\$ 21,901
	Project Administration (10%)	7/1/2022	6/30/2024	\$ 20,793				\$ 20,793
	Direct Costs	7/1/2022	6/30/2024	\$ 20,750	\$ 16,640			\$ 37,390
Total				\$ 228,727	\$ 101,435	\$ 5,000	\$ 11,250	\$ 346,412

	CWCB Grant	Match	Total Budget
Task 1: Peer Learning Network			
RN staff time	\$ 28,223	\$ 5,036	\$ 33,260
Consultants			
Watershed Science consultant	\$ 7,592	\$ 4,396	\$ 11,988
Facilitation consultant	\$ 8,891	\$ 5,495	\$ 14,386
Website consultant	\$ 1,300	\$ 3,500	\$ 4,800
Graphic design	\$ 2,500	\$ 2,500	\$ 5,000
Task Subtotal	\$ 48,507	\$ 20,926	\$ 69,433
Direct Expenses			
Meeting/trip expenses	\$ 6,650	\$ 6,650	\$ 13,300
Software subscriptions	\$ 1,500	\$ 2,000	\$ 3,500
Travel expenses	\$ 1,000	\$ 2,000	\$ 3,000
Supplies/printing	\$ 1,500	\$ 500	\$ 2,000
Task Subtotal	\$ 10,650	\$ 11,150	\$ 21,800
Subtotal	\$ 59,157	\$ 32,076	\$ 91,233
TASK 2 – SMP Peer Learning Network Evaluation			
RN staff time	\$ 16,024	\$ 3,047	\$ 19,071
Facilitation consultant	\$ 2,670	\$ 1,650	\$ 4,320
Evaluation consultant	\$ 2,000	\$ 8,000	\$ 10,000
Subtotal	\$ 20,694	\$ 12,697	\$ 33,391
TASK 3 – Outreach & Education			
RN staff time	\$ 22,263	\$ 3,765	\$ 26,028
CWT time	\$ 4,500	\$ 4,500	\$ 9,000
Consultants			
Watershed Science consultant	\$ 500		\$ 500
Facilitation consultant	\$ 800		\$ 800
Graphic design	\$ 3,500	\$ 5,000	\$ 8,500
Task Subtotal	\$ 31,563	\$ 13,265	\$ 44,828
Direct Expenses			
Ad placement: SMPs and website	\$ 2,500		\$ 2,500
CWT travel	\$ 2,300		\$ 2,300
Travel expenses	\$ 2,000	\$ 1,830	\$ 3,830
Task Subtotal	\$ 6,800	\$ 1,830	\$ 8,630
Subtotal	\$ 38,363	\$ 15,095	\$ 53,458
TASK 4 – Support Strategic Development of SMPs			
RN staff time	\$ 39,913	\$ 9,502	\$ 49,415
CWT staff time	\$ 6,750	\$ 6,750	\$ 13,500
Consultants			
Prioritization implementation	\$ 20,000		\$ 20,000
Watershed Science consultant	\$ 2,280	\$ 1,320	\$ 3,600
Facilitation consultant	\$ 1,335	\$ 825	\$ 2,160
Capacity building support funds	\$ -	\$ 30,000	\$ 30,000
Task Subtotal	\$ 70,278	\$ 48,397	\$ 118,675
Direct Expenses			
Travel expenses	\$ 1,000	\$ 3,660	\$ 4,660
CWT travel	\$ 2,300		\$ 2,300
Task Subtotal	\$ 3,300	\$ 3,660	\$ 6,960
Subtotal	\$ 73,578	\$ 52,057	\$ 125,635
TASK 5 – Project Coordination			
RN staff time	\$ 13,667	\$ 4,274	\$ 17,941
Consultants			
Watershed Science consultant	\$ 1,140	\$ 660	\$ 1,800
Facilitation consultant	\$ 1,335	\$ 825	\$ 2,160
Subtotal	\$ 16,142	\$ 5,759	\$ 21,901
SubTotal	\$ 207,933	\$ 117,685	\$ 325,618.67
Project administration (10%)	\$ 20,793		\$ 20,793.33
TOTAL	\$ 228,727	\$ 117,685	\$ 346,411.99



3264 Larimer Street, Suite D, Denver, CO 80205
720.570.2897 | www.ColoradoWaterTrust.org

Tuesday, November 2, 2021

Chris Sturm
Colorado Water Conservation Board
1313 Sherman St. Room 721
Denver, CO 80203

Dear Mr. Sturm,

Colorado Water Trust fully supports River Network's application for a Watershed Restoration Program Stream Management Plan Grant to support the Stream Management Plan Peer Learning Network. River Network's work across Colorado since 2017 has helped to ensure that local entities are well supported as they pursue development of stream management plans (and integrated water management plans) in support of Colorado's Water Plan goals.

Colorado Water Trust is a 501(c)(3) nonprofit organization based in Denver, Colorado and is focused on restoring flows to Colorado's rivers in need. Since 2001, CWT has completed over 30 projects across Colorado. CWT first engaged in support of stream management planning efforts in 2016, and since then has worked to provide information about flow restoration opportunities to entities leading stream management planning efforts as well as to entities considering development of stream management plans.

CWT is supportive of River Network's efforts to support development of stream management plans across the state, and has collaborated with River Network on outreach efforts and support of certain stream management planning efforts. CWT hopes to continue collaborating with River Network to support the development of more flow-focused planning outcomes in the futures.

Sincerely,

A handwritten signature in black ink, appearing to read 'Kate Ryan', is positioned below the word 'Sincerely,'.

Kate Ryan

Senior Staff Attorney/Director of Programs

