

9/20/21

Colorado Water Conservation Board
Chris Sturm, Watershed Program Director
Chris.Sturm@state.co.us

Re: Revitalize the Rio - Phase I, Final Report

Dear Mr. Sturm

In the following package you will find a final report for the Revitalize the Rio Phase I project. We are also submitting for reimbursement for the full \$55,160.00 grant award with this report.

Please let us know if you have any questions for us about this report or reimbursement request.

This project has proven to be valuable for recreational access and economic recovery in our community. Thank you for your support of this work and we hope to work with you again on future Environmental and Recreation Projects.

Respectfully,

Andy Rice
Director of Parks, Recreation & Library
City of Alamosa
719-587-2529
arice@ci.alamosa.co.us
2222 Old Sanford Rd.
Alamosa, CO 81101

John Reesor
Outdoor Recreation and Planning Specialist
City of Alamosa
719-937-9025
jreesor@ci.alamosa.co.us
2222 Old Sanford Rd.
Alamosa, CO 81101

Project Summary

The Revitalize the Rio – Phase I project was successfully completed in the Spring of 2021. Project elements completed include:

1. Final design, engineering, permitting and construction of (2) boat ramps; “North River Pavilion” and “State Ave. Bridge”
2. Construction of (2) interpretive kiosks containing information about Riparian Habitat, Yellow-Billed Cuckoo and Southwestern Willow flycatcher and Leave No Trace ethic for river recreation
3. Design, engineering, permitting and construction of (2) fishing jetties and (3) fish habitat features at Blanca Vista Park
4. Monitoring of riparian habitat in project area.

Phase 1 has created river access for non-motorized boaters on the Rio Grande from the North River Pavilion to the State Avenue Bridge, creating a contiguous 2.74 mile boatable stretch in Alamosa. This represents the first formalized river access for recreators on the Rio Grande in Alamosa since the construction of the levee system. Furthermore, two ADA fishing jetties and habitat features have activated Blanca Vista Park for anglers and improved the fishery at that pond.

This project was made possible due to generous funding from CWCB, Great Outdoors Colorado, Colorado Parks and Wildlife, and the Colorado Health Foundation. Please note that a Resilient Communities grant from Great Outdoors Colorado was awarded to the City of Alamosa for this project after the Water Plan grant application and budget was submitted. Therefore, we have added funding from GOCO in the Phase I actual expenses project budget and are documenting this GOCO funding as match for CWCB funding.

Obstacles Encountered

The implementation of this project was relatively seamless. Cold temperatures in the Fall of 2020 froze the river and the completion of the construction project was delayed until the Spring of 2021. This meant our contractor had to mobilize twice, however that cost was absorbed by the contractor. This was possibly the only setback to the project.

Lessons Learned

“If you build it, they will come.” Alamosa residents and visitors to Alamosa have been using the boat ramps and fishing jetties regularly since their construction. The following YouTube video shows highlights from the 1st Annual Valley Bottom Rio Trio, an adventure-style triathlon that used the two newly constructed boat ramps. The event sold out two weeks before the race and brought in 60+ participants from outside of Alamosa County: <https://www.youtube.com/watch?v=CVCgy1Qezrl>

One unexpected impact of these new amenities is that they are not *only* being used for their intended purposes. For example, it is common at the North River Pavilion to see families fishing with their car backed down to the river. At the State Ave. Boat ramp, people are bringing out their lawn chairs and relaxing with their feet in the water while children swim in the river. On the fishing jetties, people are often congregating, practicing yoga, taking family pictures, and generally just enjoying being on the water and not necessarily fishing. Simply put, access to water recreation in Alamosa has been greatly improved through these first formalized access points and they are being utilized by a diverse group of people.

Actual Expenses

Photographs, Engineering and Designs

Picture 1 – Newly constructed North River Pavilion Boat Ramp. Boats are staged for the 1st Annual Valley Bottom Rio Trio adventure race (*Photo Credit: Moxiecran Media*)



Picture 2 – Newly constructed North River Pavilion Boat Ramp. Boats are staged for the 1st Annual Valley Bottom Rio Trio adventure race (*Photo Credit: Moxiecran Media*)



Picture 3 – Drone photography of the new North River Pavilion Boat Ramp (*Photo Credit: Moxiecran Media*)



Picture 4 – Participants finish the boat leg of the Rio Trio adventure race and take out at the recently constructed State Avenue Boat Ramp (*Photo Credit: Moxiecran Media*)



North Pavilion Boat Ramp Project

Prepared for:
City of Alamosa Parks & Recreation Dept.

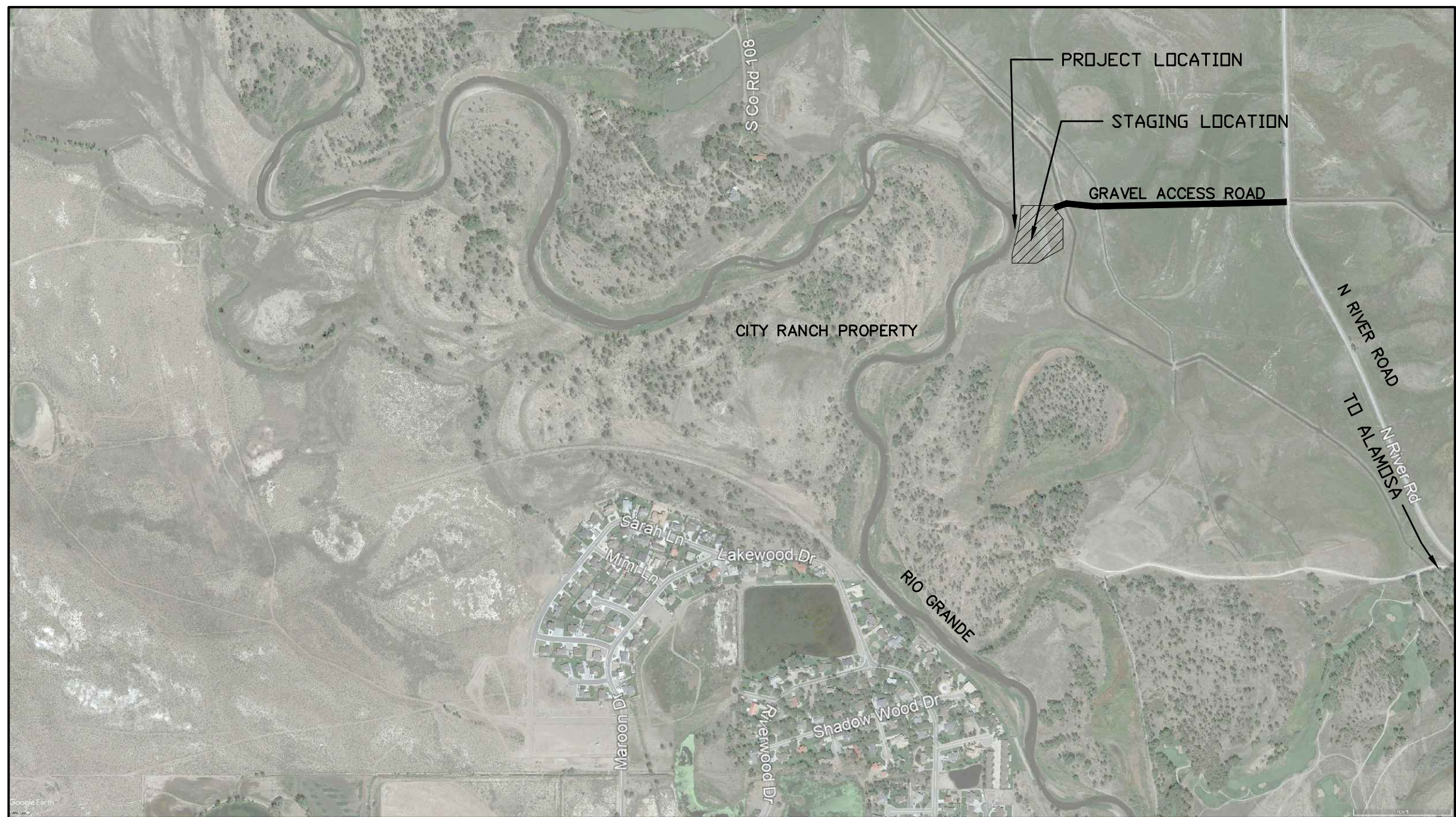


LOCATION MAP

SHEET INDEX

- 1. COVER SHEET, LOCATION MAP, SHEET INDEX
- 2. CONSTRUCTION ACCESS & STAGING
- 3. BOAT RAMP FINAL DESIGN
- 4. CONSTRUCTION DETAILS

 RIVERBEND ENGINEERING, LLC 102 Third St., P.O. Box 2979, Pagosa Springs, CO 81147 Tel: 970.264.1195 Fax: 970.264.1196 www.riverrestoration.com	NORTH PAVLION BOAT RAMP PROJECT		Sheet
	CITY OF ALAMOSA PARKS & REC. DEPT.		1
	COVER SHEET		of
	LOCATION MAP/ SHEET INDEX		4
SCALE: NTS		10/5/2020	



RIVERBEND ENGINEERING, LLC

102 Third St., P.O. Box 2979, Pagosa Springs, CO 81147

Tel: 970.264.1195 Fax: 970.264.1196 www.riverrestoration.com

NORTH PAVLION BOAT RAMP PROJECT

CITY OF ALAMOSA PARKS & REC. DEPT.

STAGING AND ACCESS MAP

SCALE: NTS

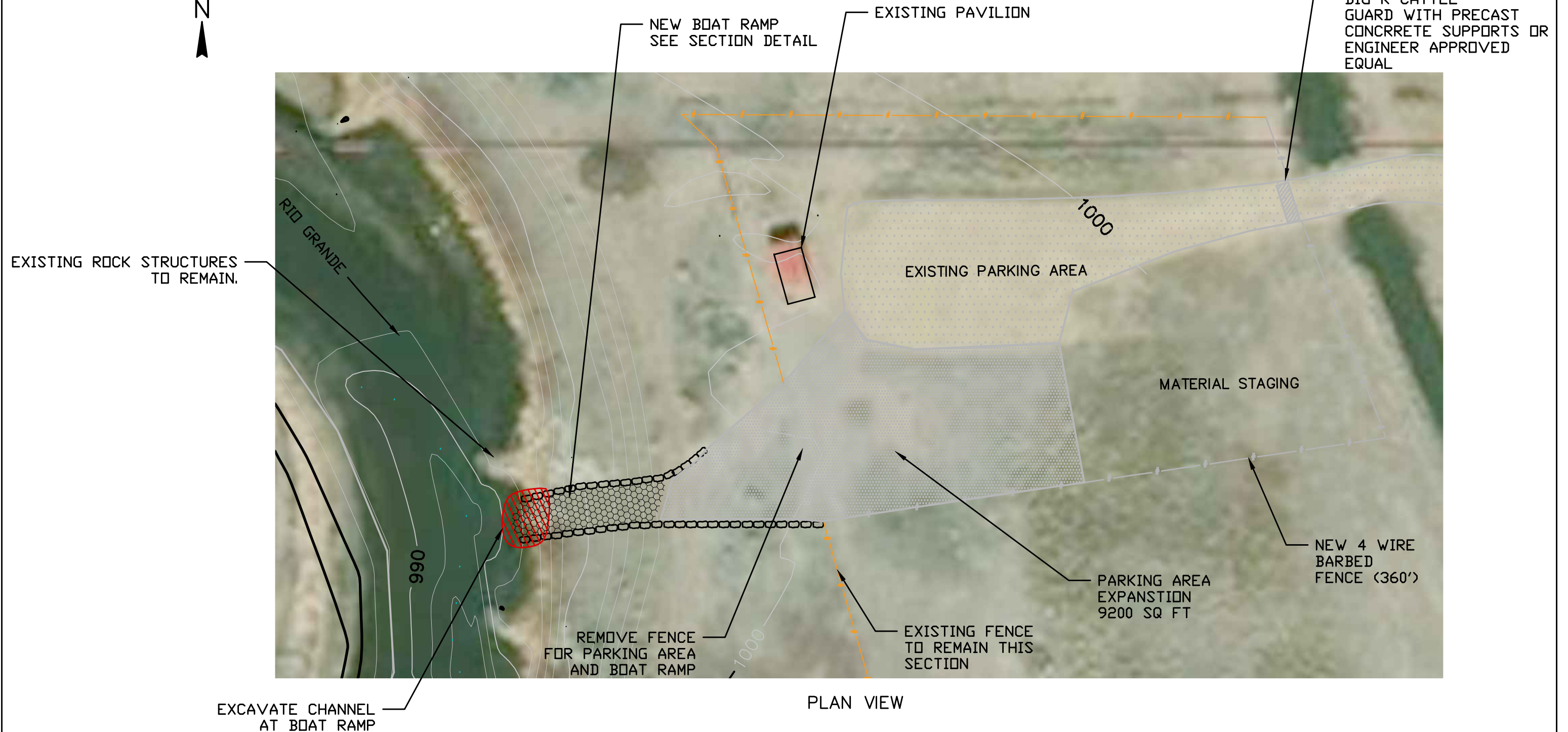
10/5/2020

Sheet

2

of

4



RIVERBEND ENGINEERING, LLC

102 Third St., P.O. Box 2979, Pagosa Springs, CO 81147

Tel: 970.264.1195 Fax: 970.264.1196 www.riverrestoration.com

NORTH PAVLION BOAT RAMP PROJECT

CITY OF ALAMOSA PARKS & REC. DEPT.

BOAT RAMP PLAN VIEW

SCALE: 1"=40' (11X17)

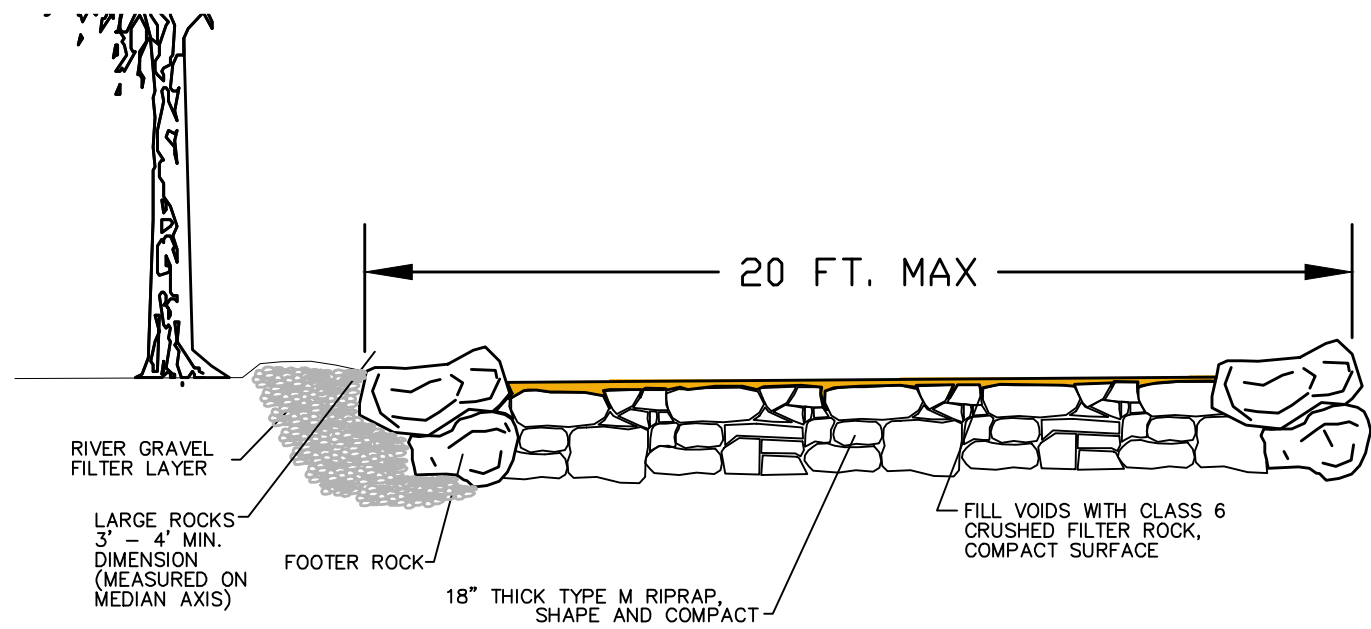
10/5/2020

Sheet

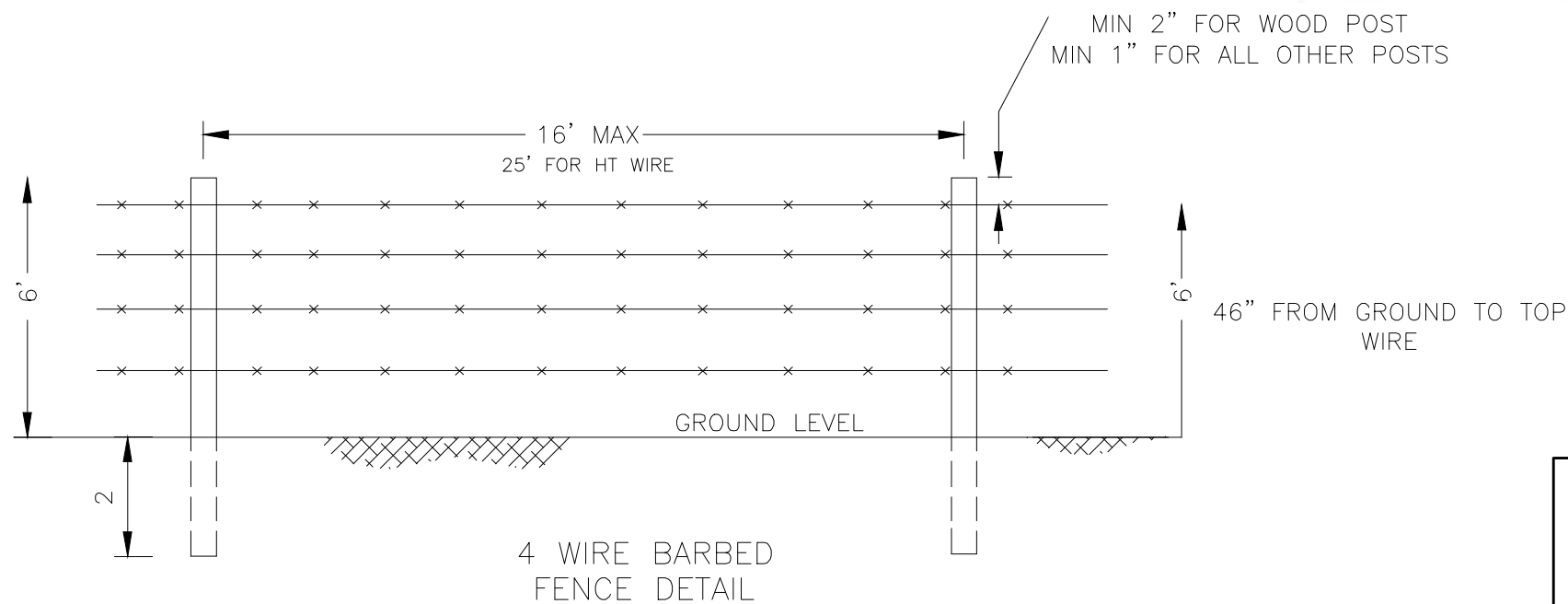
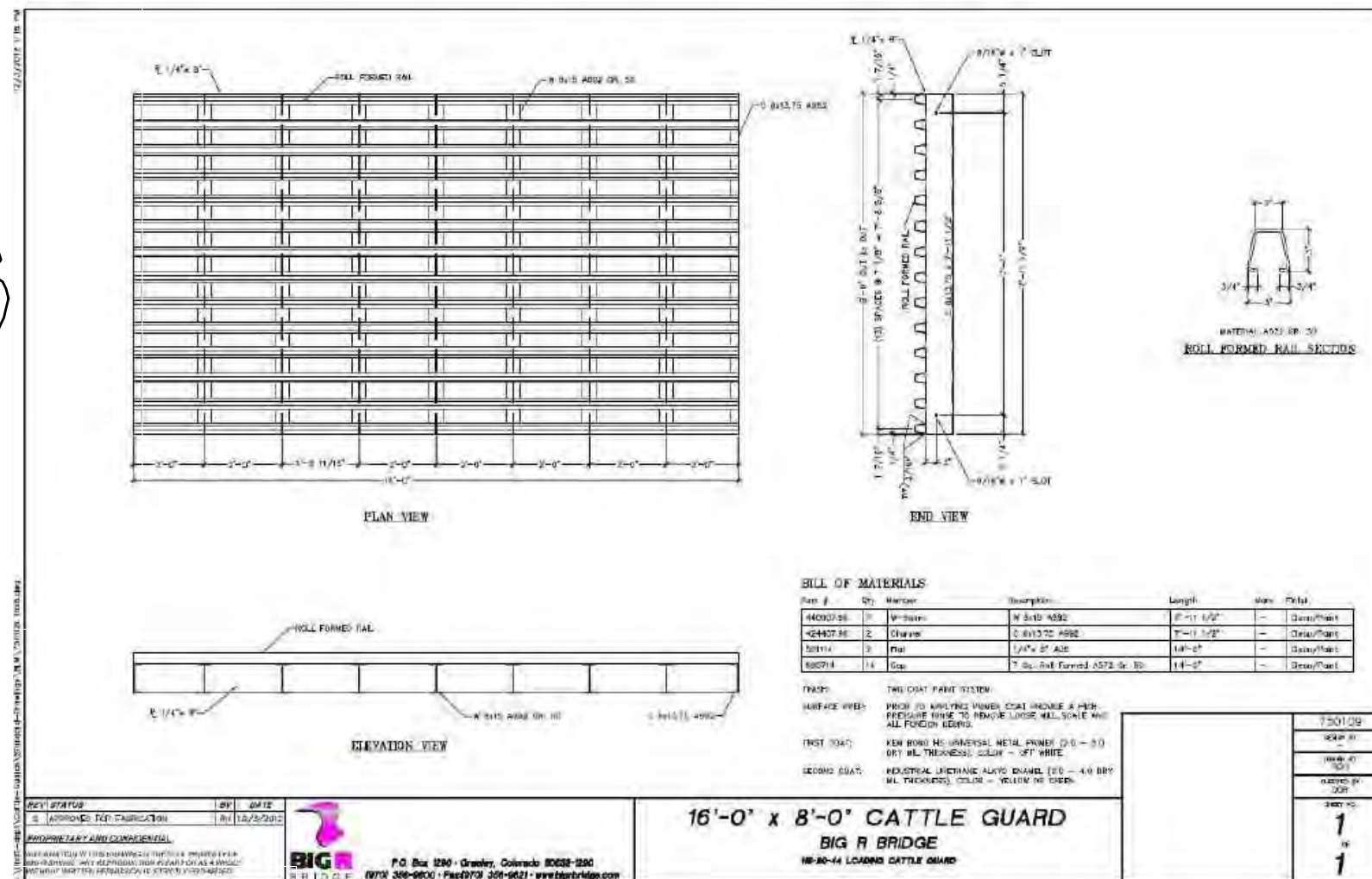
3

of

4



BOAT RAMP TYPICAL SECTION
SECTION VIEW
NTS



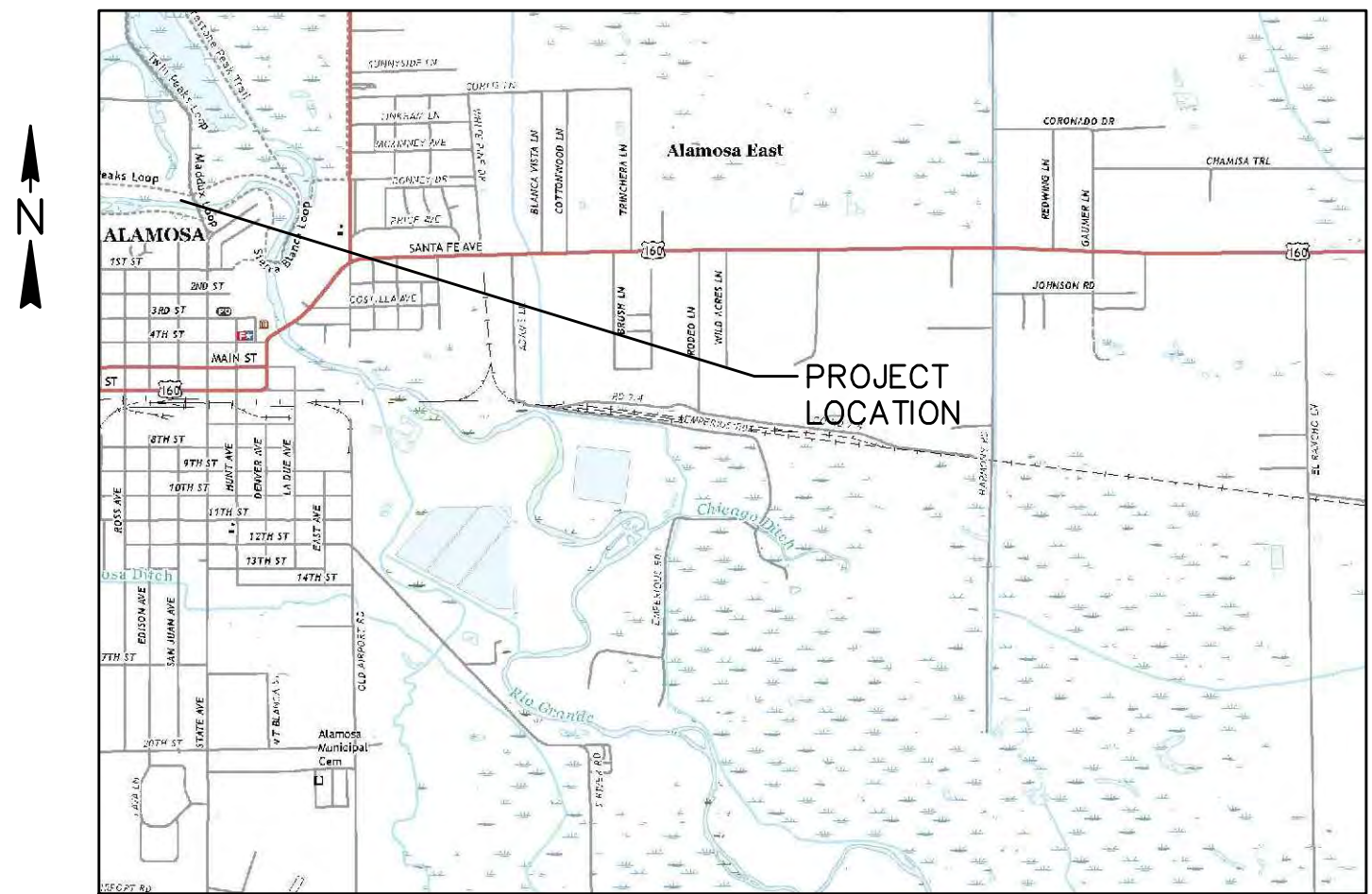


RIVERBEND ENGINEERING, LLC
102 Third St., P.O. Box 2979, Pagosa Springs, CO 81147
Tel: 970.264.1195 Fax: 970.264.1196 www.riverrestoration.com

NORTH PAVLION BOAT RAMP PROJECT		Sheet
CITY OF ALAMOSA PARKS & REC. DEPT.		4
CONSTRUCTION DETAILS		of
SCALE: NTS		10/5/2020

State Avenue Boat Ramp Project

Prepared for:
City of Alamosa Parks & Recreation Dept.



LOCATION MAP

SHEET INDEX

1. COVER SHEET, LOCATION MAP, SHEET INDEX
2. CONSTRUCTION ACCESS & STAGING
3. BOAT RAMP FINAL DESIGN
4. BOAT RAMP & TRAIL DETAILS



RIVERBEND ENGINEERING, LLC

102 Third St., P.O. Box 2979, Pagosa Springs, CO 81147

Tel: 970.264.1195 Fax: 970.264.1196 www.riverrestoration.com

STATE AVENUE BOAT RAMP PROJECT

CITY OF ALAMOSA PARKS & REC. DEPT.

COVER SHEET
LOCATION MAP/ SHEET INDEX

SCALE: NTS

9/24/2020

Sheet

1

of

4



ACCESS & STAGING PLAN



RIVERBEND ENGINEERING, LLC

102 Third St., P.O. Box 2979, Pagosa Springs, CO 81147

Tel: 970.264.1195 Fax: 970.264.1196 www.riverrestoration.com

STATE AVENUE BOAT RAMP PROJECT

CITY OF ALAMOSA PARKS & REC. DEPT.

SITE ACCESS AND STAGING PLAN

NOT TO SCALE

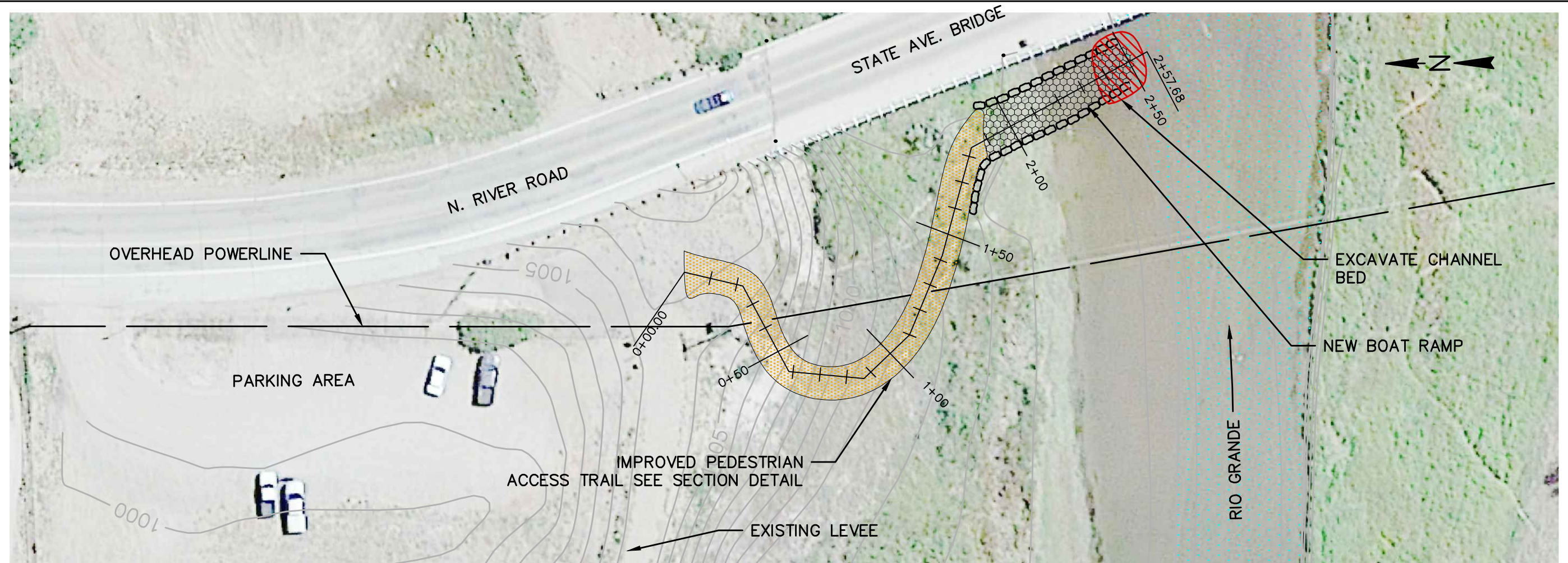
9/24/2020

Sheet

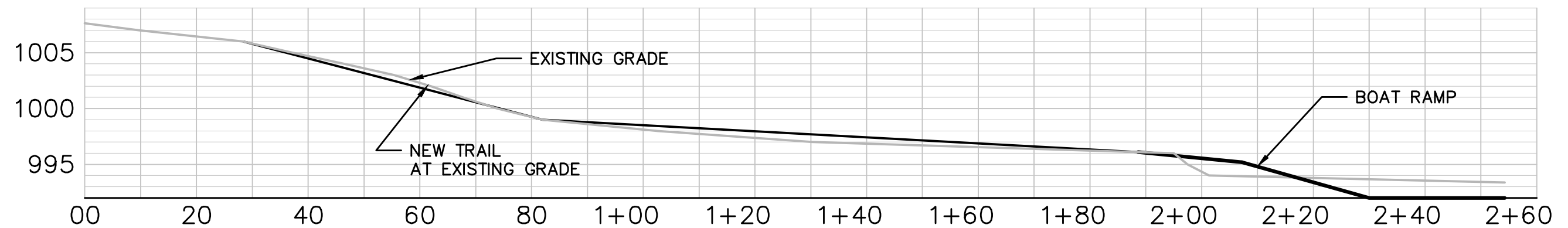
2

of

4



PLAN VIEW



PROFILE VIEW



SCALE IS 1" = 40 FT ON 11x17 SIZE SHEET
ALL OTHER SIZE SHEETS USE SCALE BAR



RIVERBEND ENGINEERING, LLC

102 Third St., P.O. Box 2979, Pagosa Springs, CO 81147

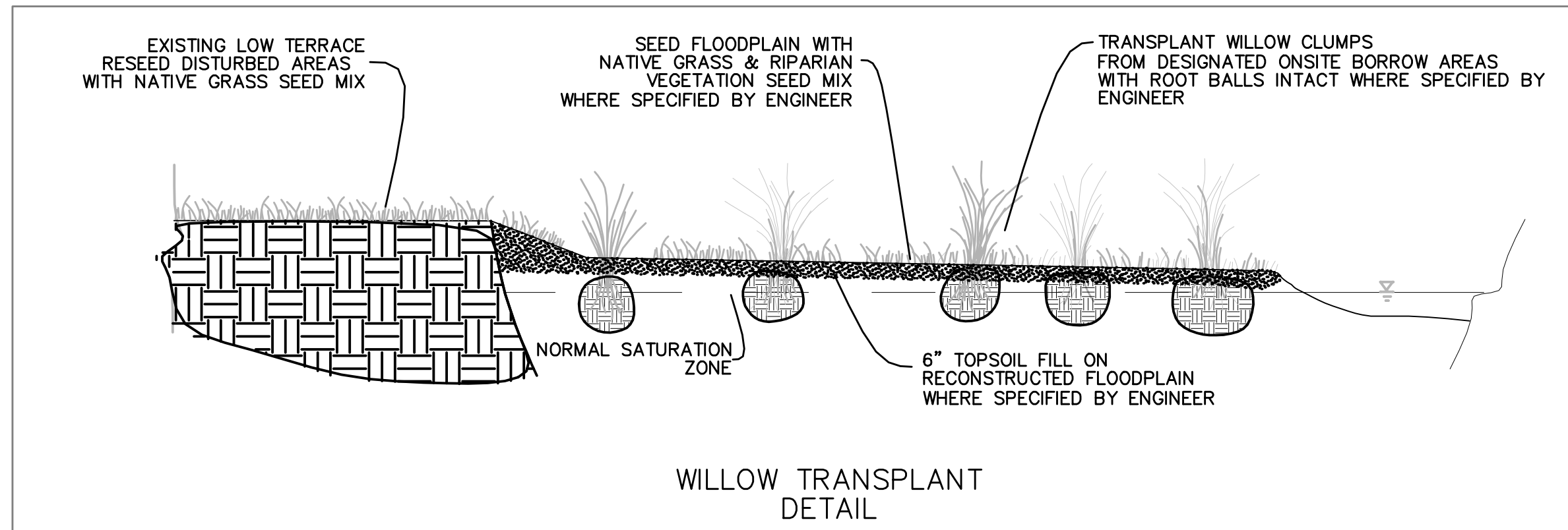
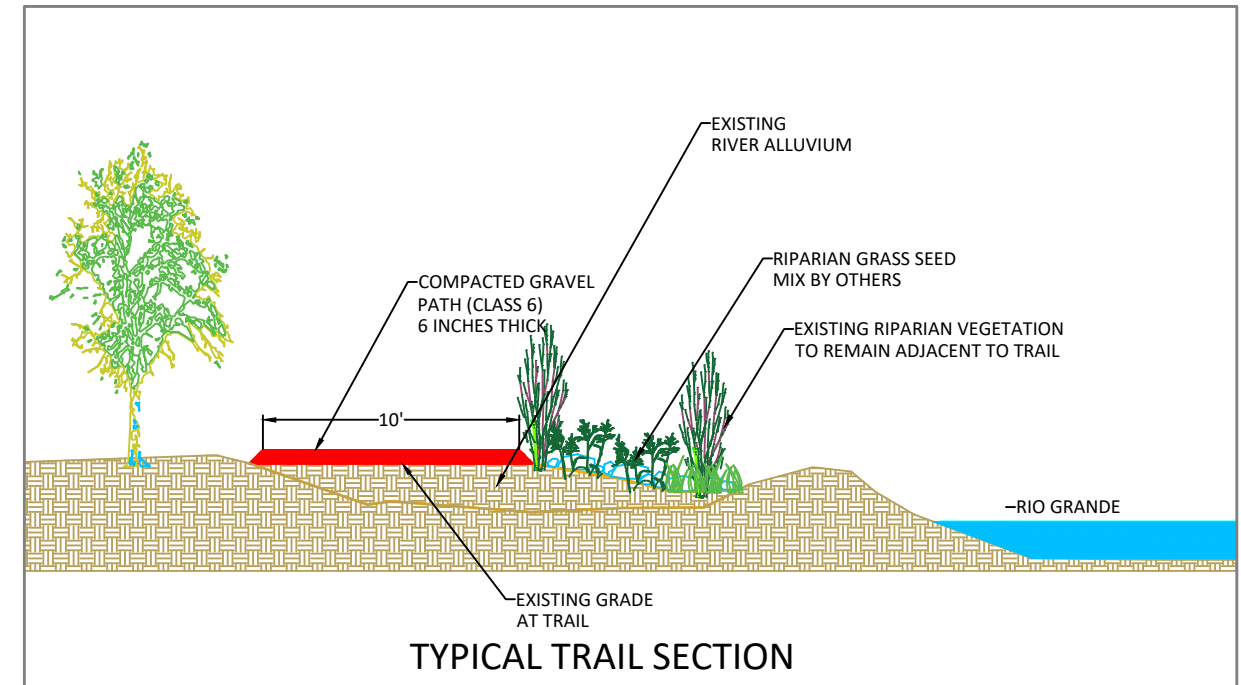
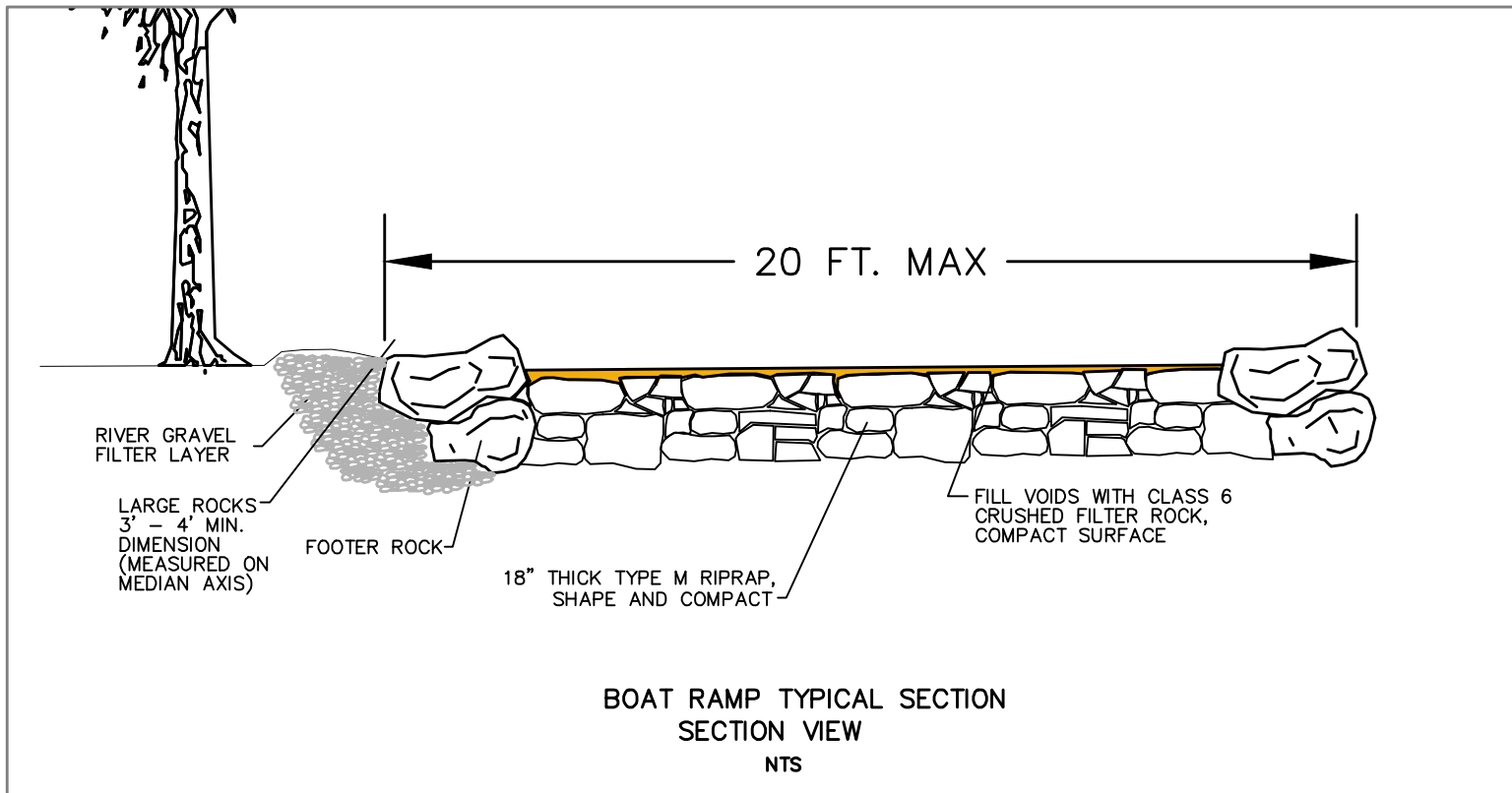
Tel: 970.264.1195 Fax: 970.264.1196 www.riverrestoration.com

STATE AVENUE BOAT RAMP PROJECT
CITY OF ALAMOSA PARKS & REC. DEPT.
BOAT RAMP FINAL DESIGN

SCALE: 1" = 40 FT

9/24/2020

Sheet
3
of
4



RIVERBEND ENGINEERING, LLC

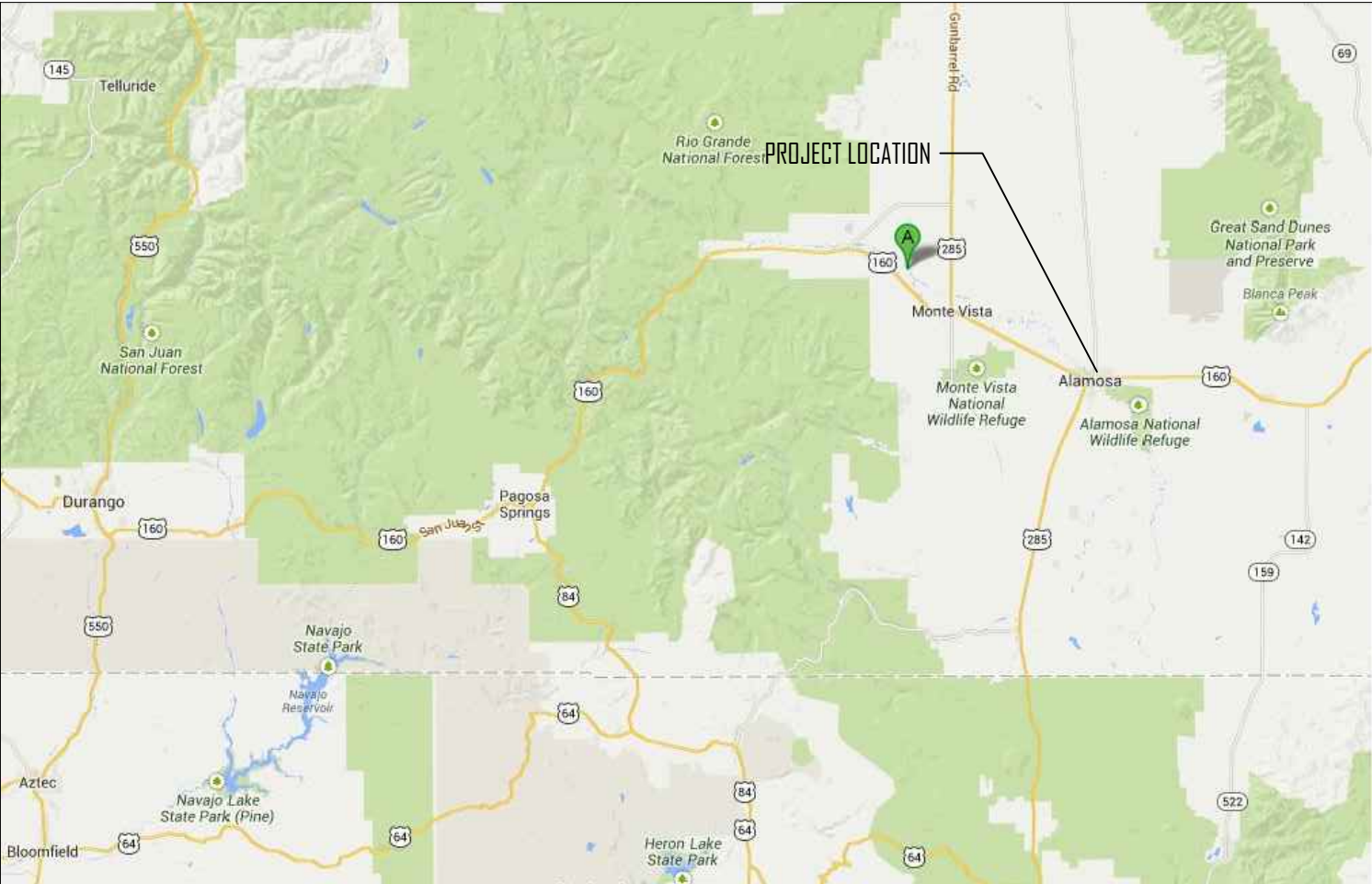
102 Third St., P.O. Box 2979, Pagosa Springs, CO 81147

Tel: 970.264.1195 Fax: 970.264.1196 www.riverrestoration.com

RIPARIAN PARK BANK STABILIZATION		Sheet
RIO GRANDE RESTORATION FOUNDATION		4
BOAT RAMP & TRAIL CONSTRUCTION DETAILS		of
		4
NTS	9/24/2020	

Blanca Vista Pond Improvements

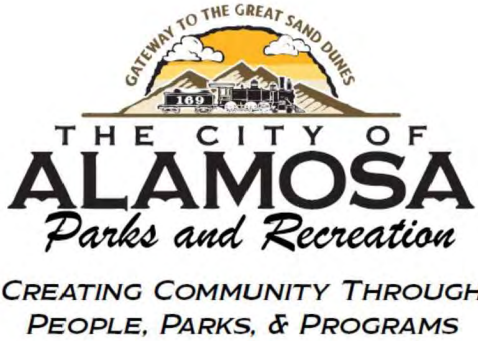
Prepared for:
City of Alamosa Parks and Recreation Department



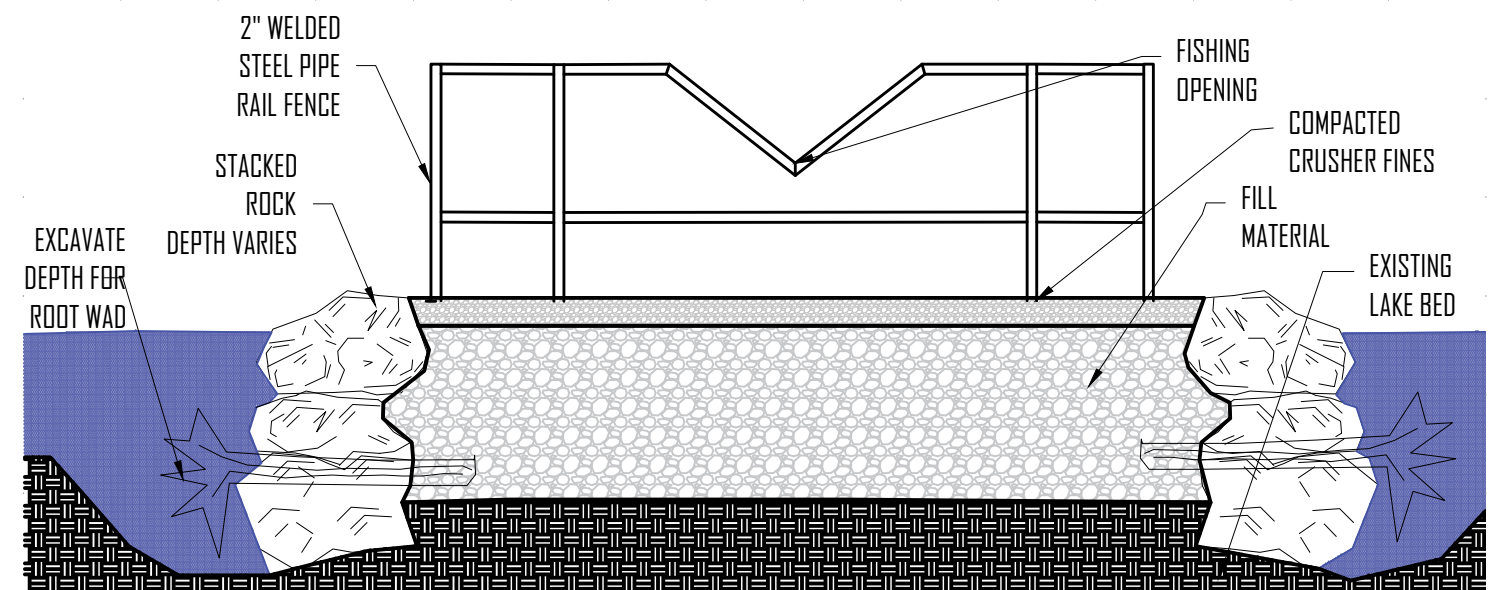
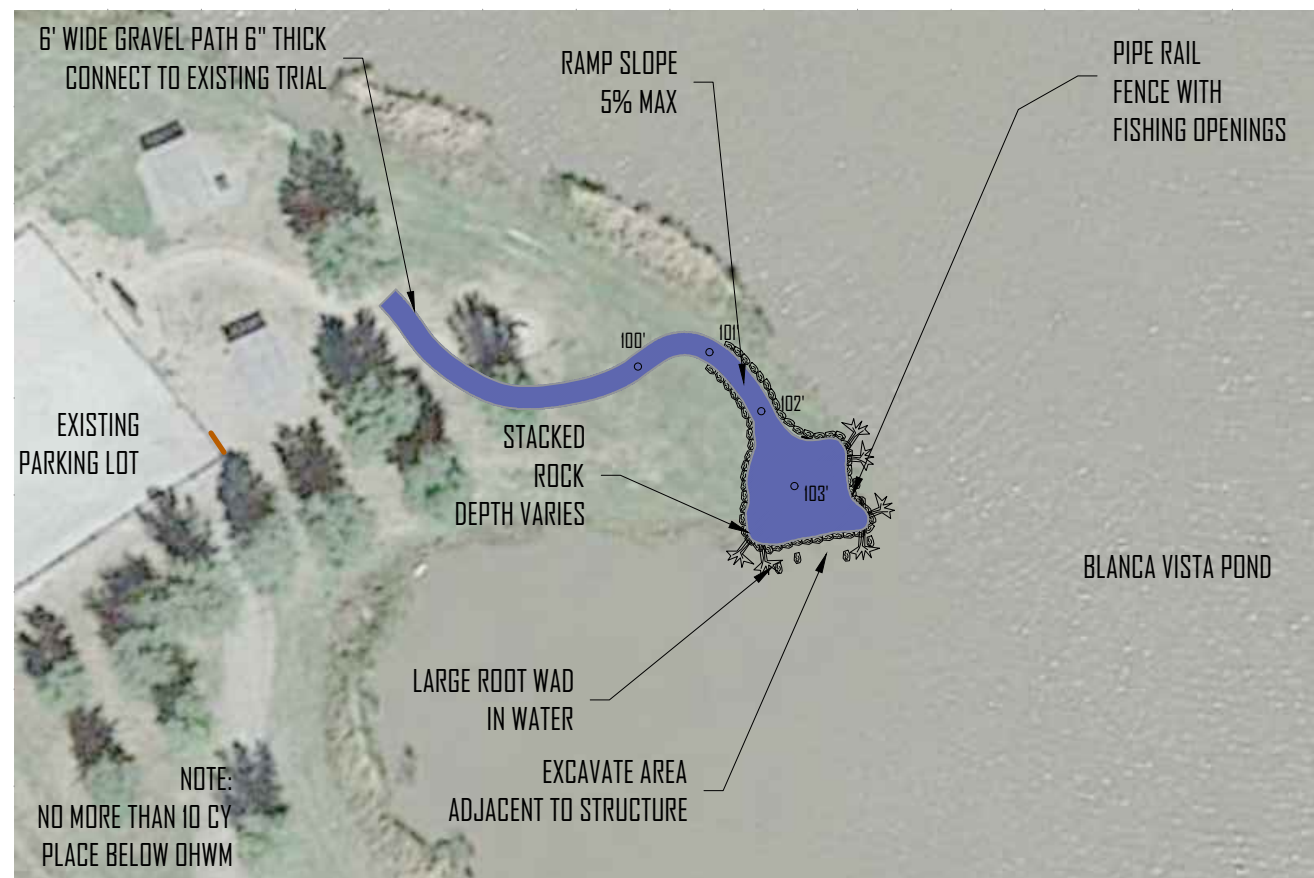
LOCATION MAP


SHEET INDEX

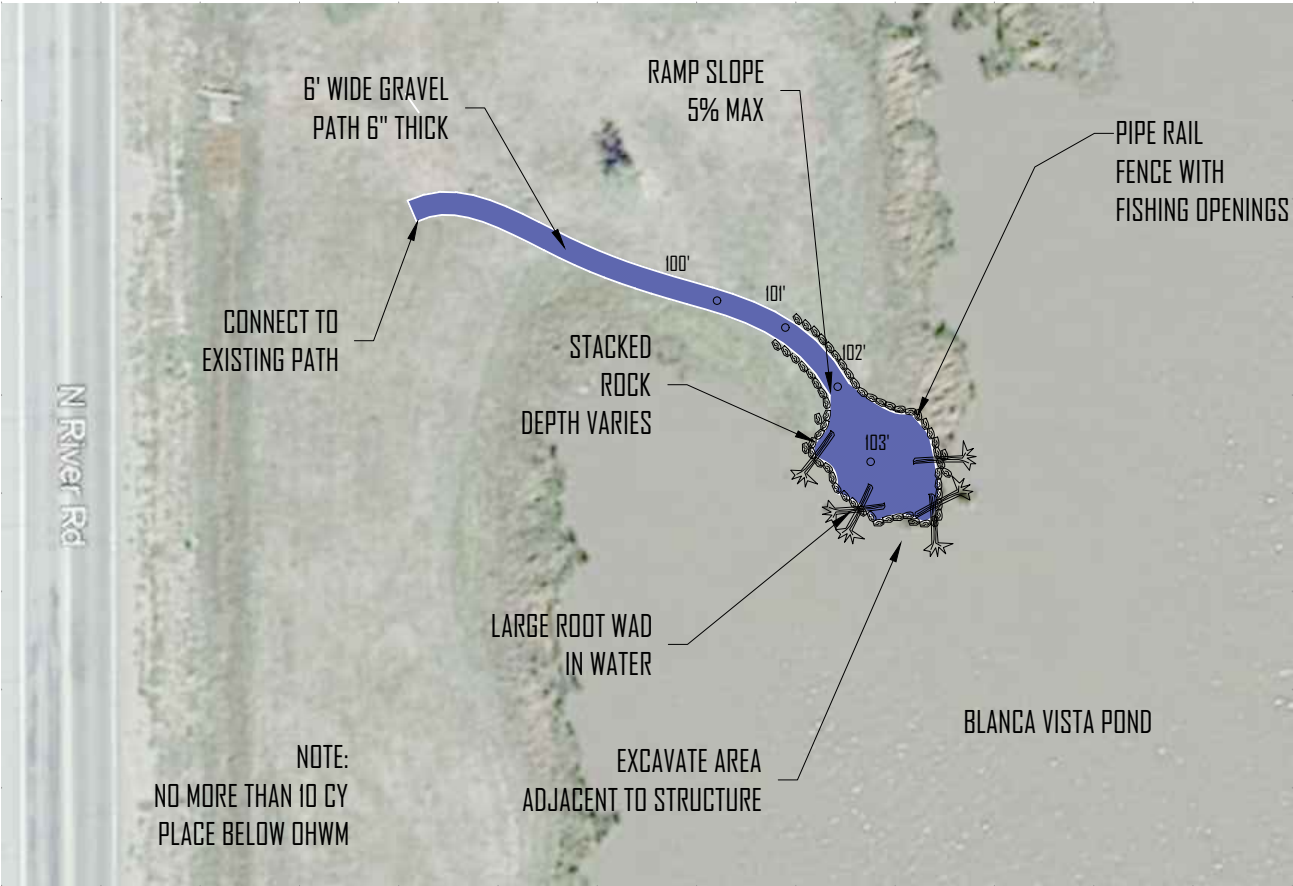
- 1. COVER SHEET, LOCATION MAP, SHEET INDEX
- 2. JETTY #1 PLAN LOCATION AND TYPICAL SECTION
- 3. JETTY #2 PLAN LOCATION AND TYPICAL SECTION
- 4. HABITAT CLUSTER TYPICAL SECTION AND CONSTRUCTION DETAILS



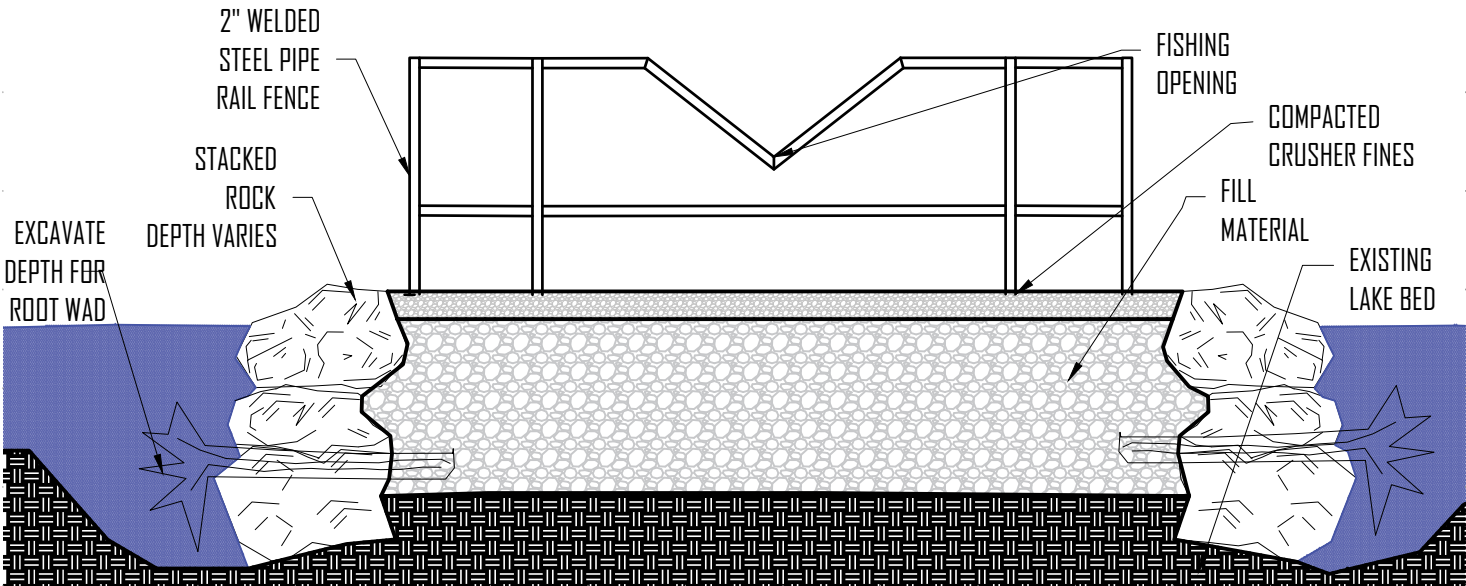
		 102 Third St., P. O. Box 5727, Pagosa Springs, CO 81147 Tel: 970.264.1195 FAX: 970.264.1196 Email: cpitcher@sriver.com	BLANCA VISTA POND IMPROVEMENTS	Sheet
			FIF HABITAT PLAN	1
			PROJECT COVER SHEET	of 2
			Scale: nts	3/10/2020



 <p>SCALE IS AS SHOWN ON 11x17 SIZE SHEET ALL OTHER SIZE SHEETS USE SCALE BAR</p>	 <p>102 Third St., P. O. Box 5727, Pagosa Springs, CO 81147 Tel: 970.264.1195 FAX: 970.264.1196 Email: cpitcher@sawriver.com</p>	BLANCA VISTA POND IMPROVEMENTS		Sheet
		FIF HABITAT PLAN		2
		JETTY #1 LOCATION PLAN VIEW / TYPICAL SECTION		of 4
		Scale: As shown	3/10/2020	

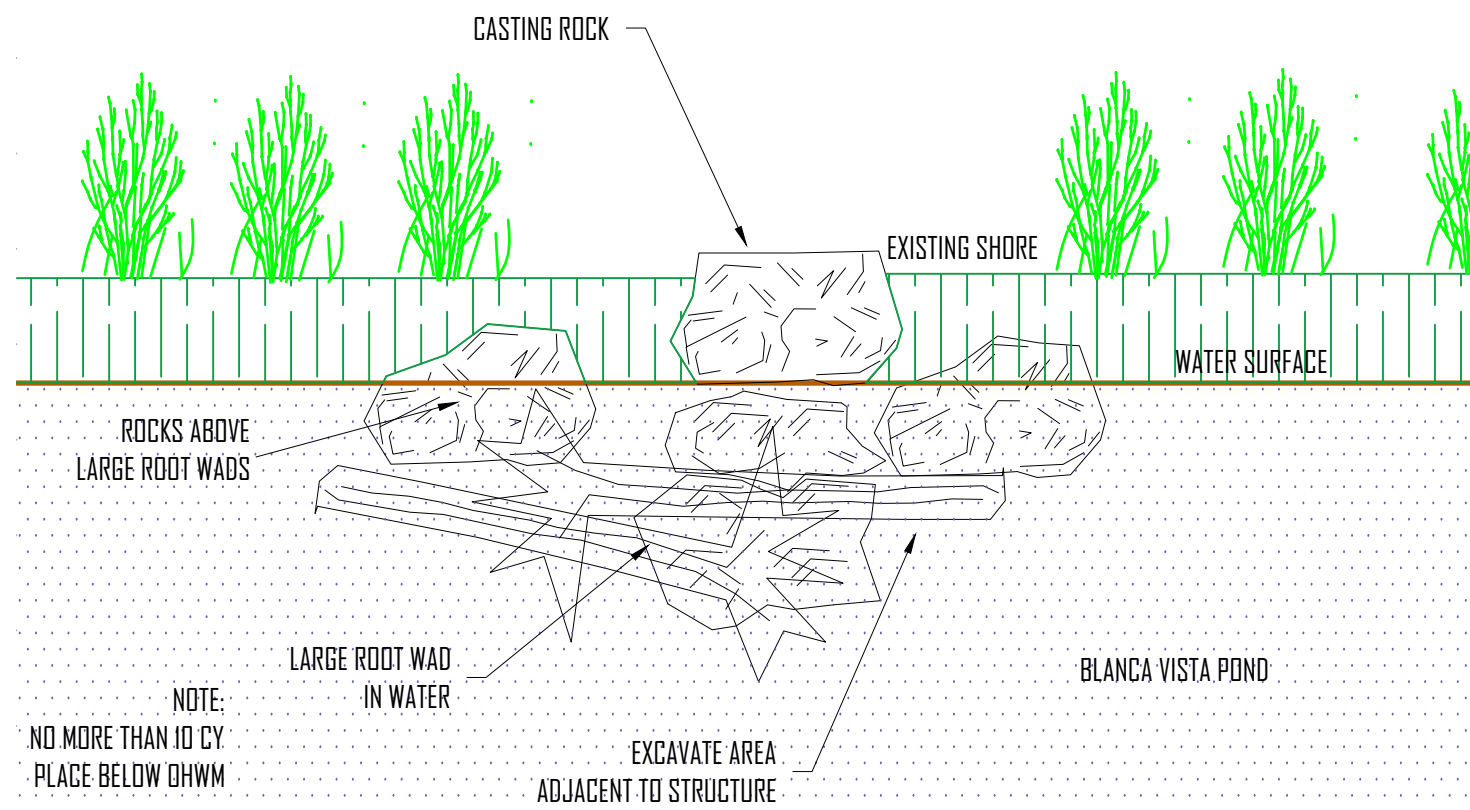


JETTY # 2 PLAN VIEW

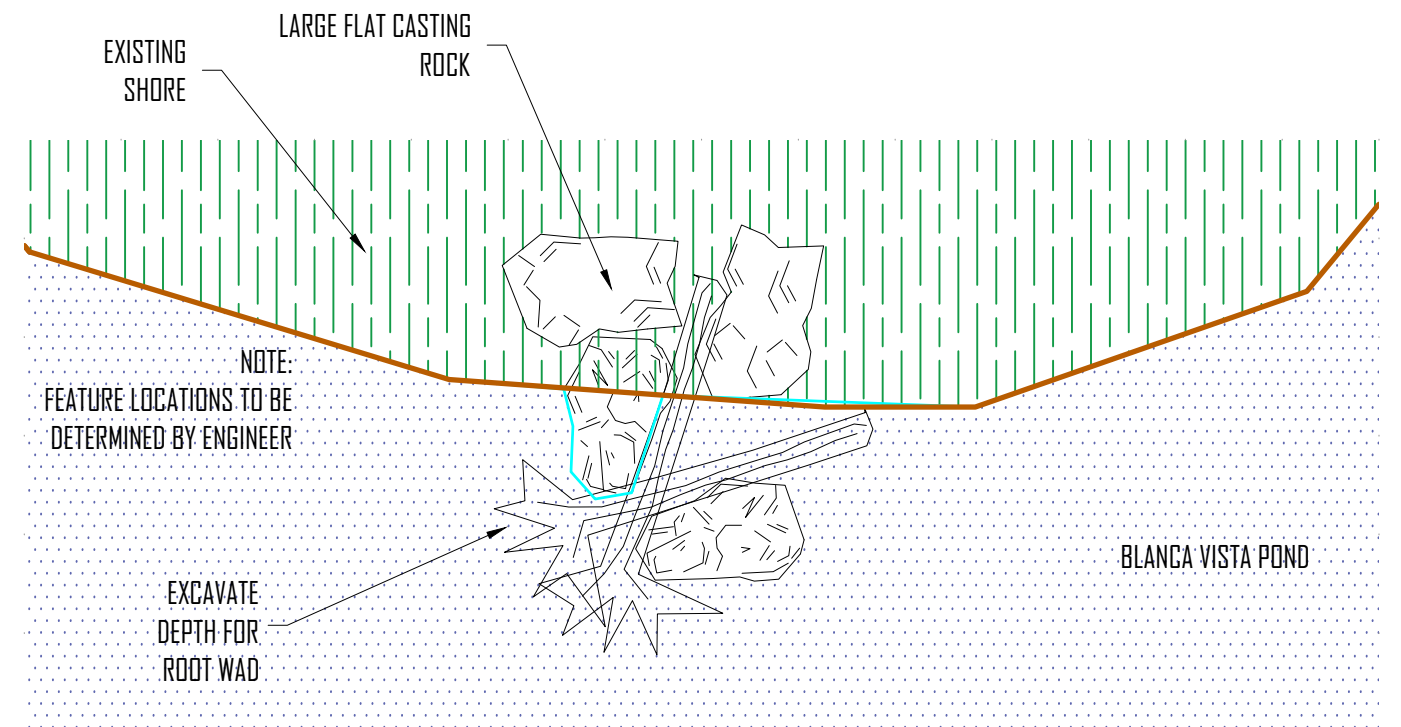


JETTY#2 TYPICAL SECTION

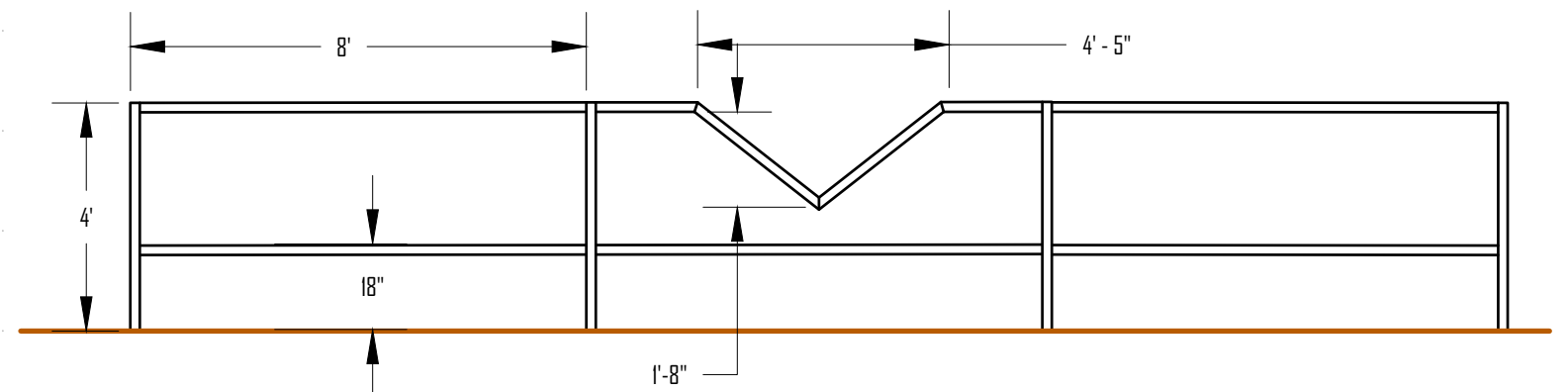
<div><p>SCALE IS AS SHOWN ON 11x17 SIZE SHEET ALL OTHER SIZE SHEETS USE SCALE BAR</p></div>		<div><p>102 Third St., P. O. Box 5727, Pagosa Springs, CO 81147 Tel: 970.264.1195 FAX: 970.264.1196 Email: cpitcher@swriver.com</p></div>	BLANCA VISTA POND IMPROVEMENTS		Sheet
			FIF HABITAT PLAN		3
			JETTY #2 LOCATION PLAN VIEW / TYPICAL SECTION		of
					4
			Scale As shown		3/10/2020



ROCK AND WOOD
HABITAT CLUSTERS SECTION VIEW



ROCK AND WOOD
HABITAT CLUSTERS PLAN VIEW



TYPICAL PIPE FENCE DIMENSIONS

<p>SCALE IS AS SHOWN ON 11x17 SIZE SHEET ALL OTHER SIZE SHEETS USE SCALE BAR</p>		<p>102 Third St., P. O. Box 5727, Pagosa Springs, CO 81147 Tel: 970.264.1195 FAX: 970.264.1196 Email: cpitcher@swriver.com</p>	BLANCA VISTA POND IMPROVEMENTS	Sheet
			FIF HABITAT PLAN	4
			CONSTRUCTION DETAILS	of 4
			Scale: nts	3/10/2020