



United States Department of Agriculture

Colorado Snow Surveys

Water Availability Task Force Meeting

July 27th, 2021

NRCS Snow Survey and Water Supply Forecasting Program

Karl Wetlaufer

Hydrologist

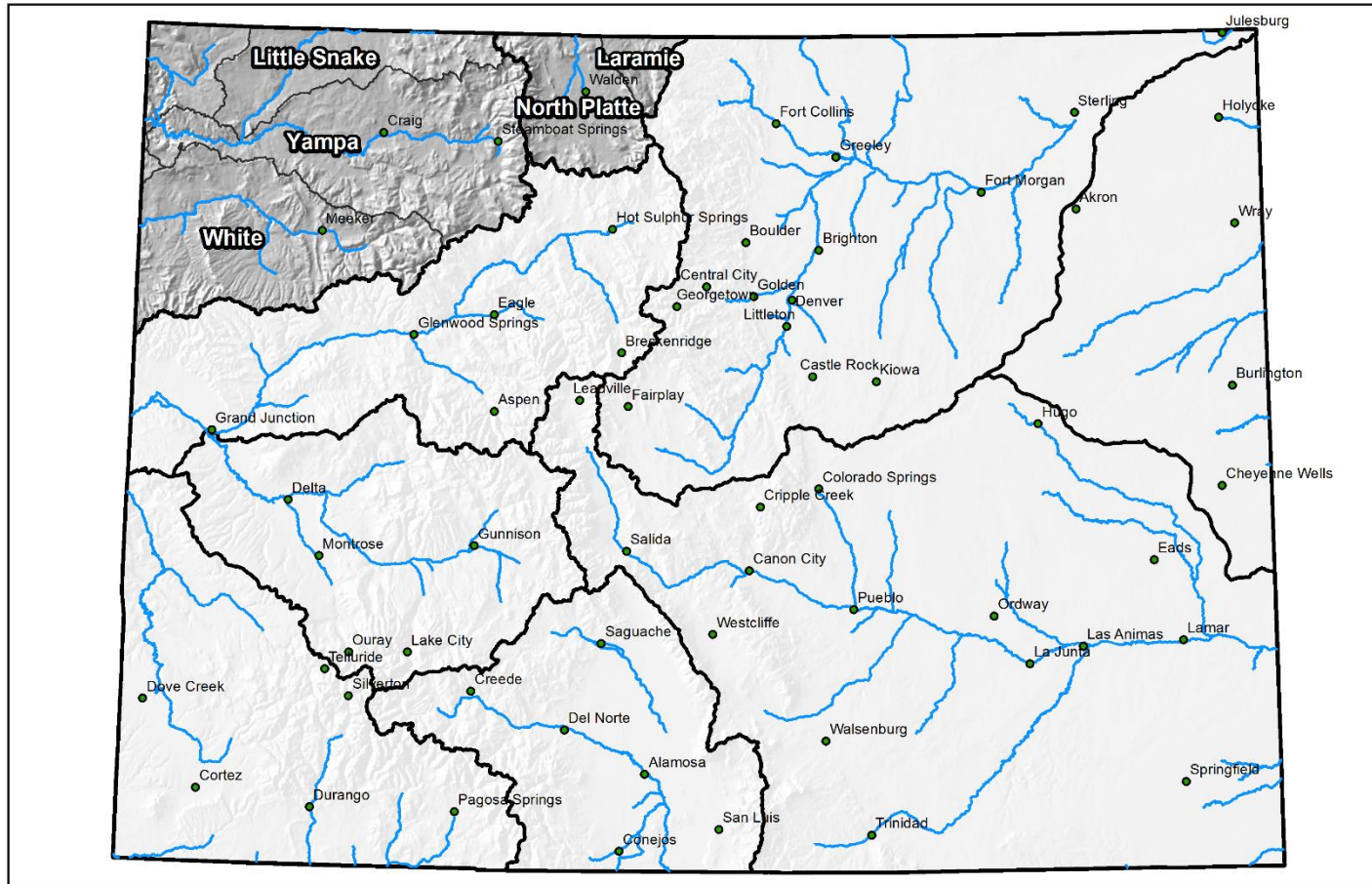
Asst. Snow Survey Supervisor

720-544-2852

<http://www.nrcs.usda.gov/wps/portal/nrcs/main/co/snow/>

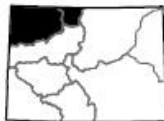
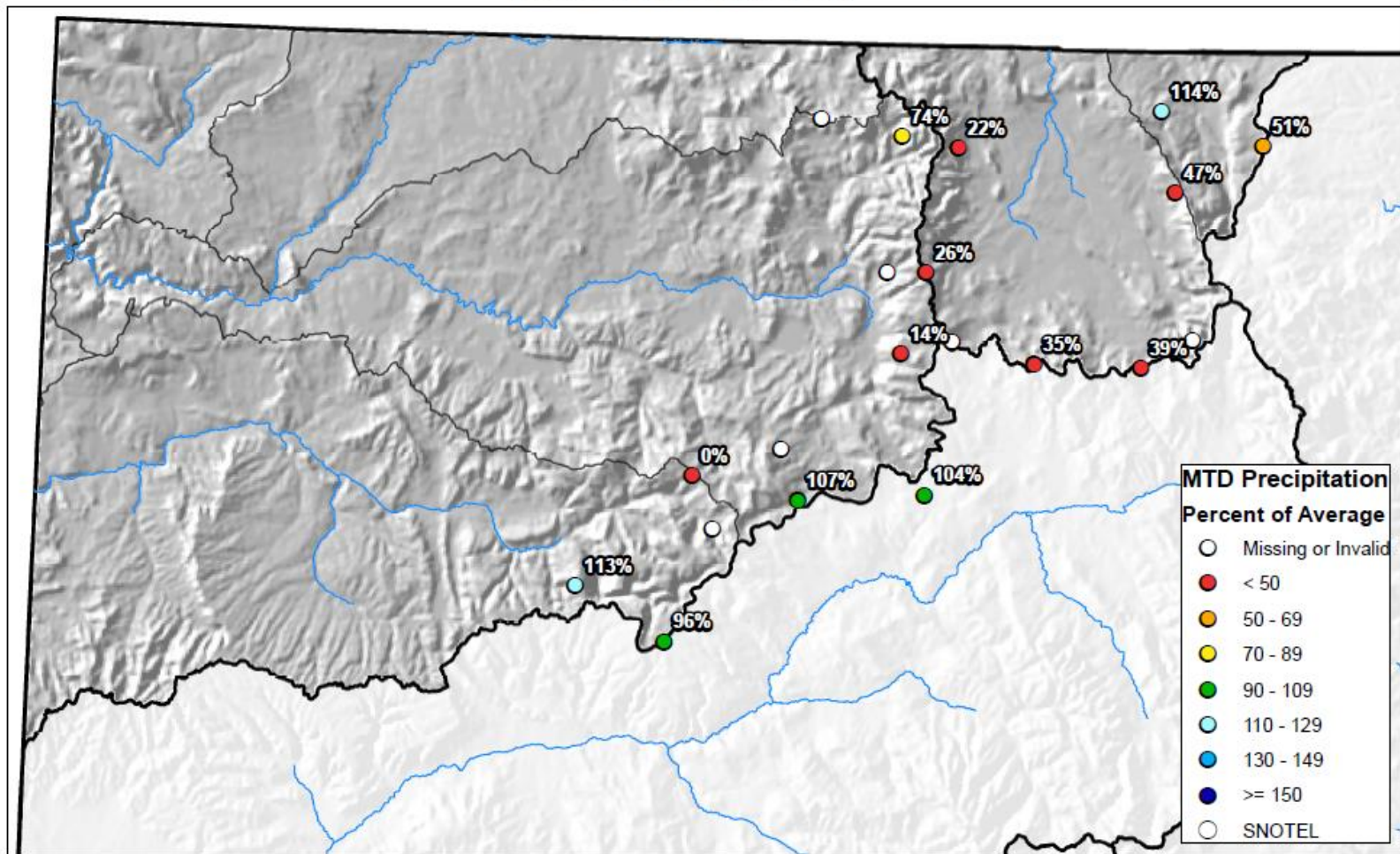
Major Basin Summary

Yampa, White, and North Platte River Basins



0 25 50 100 150 200 Miles

Yampa, White, and North Platte River Basins Month to Date Precipitation Summary Current as of Jul 23, 2021



0 10 20 40 60 80 Miles



United States Department of Agriculture

Natural Resources Conservation Service

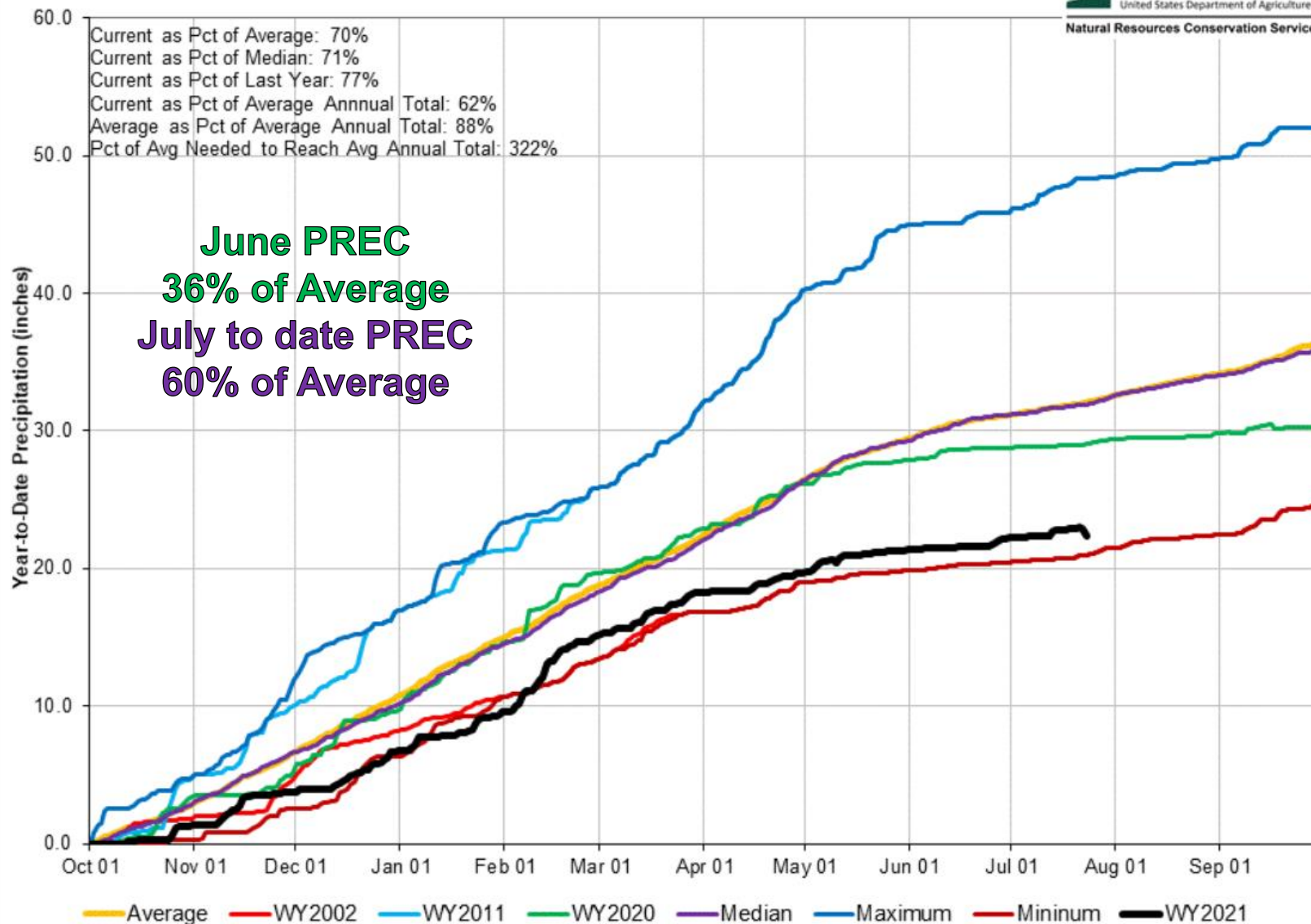
Yampa and White River Basins High/Low Year-to-Date Precipitation Summary

Based on Provisional SNOTEL data as of Jul 23, 2021

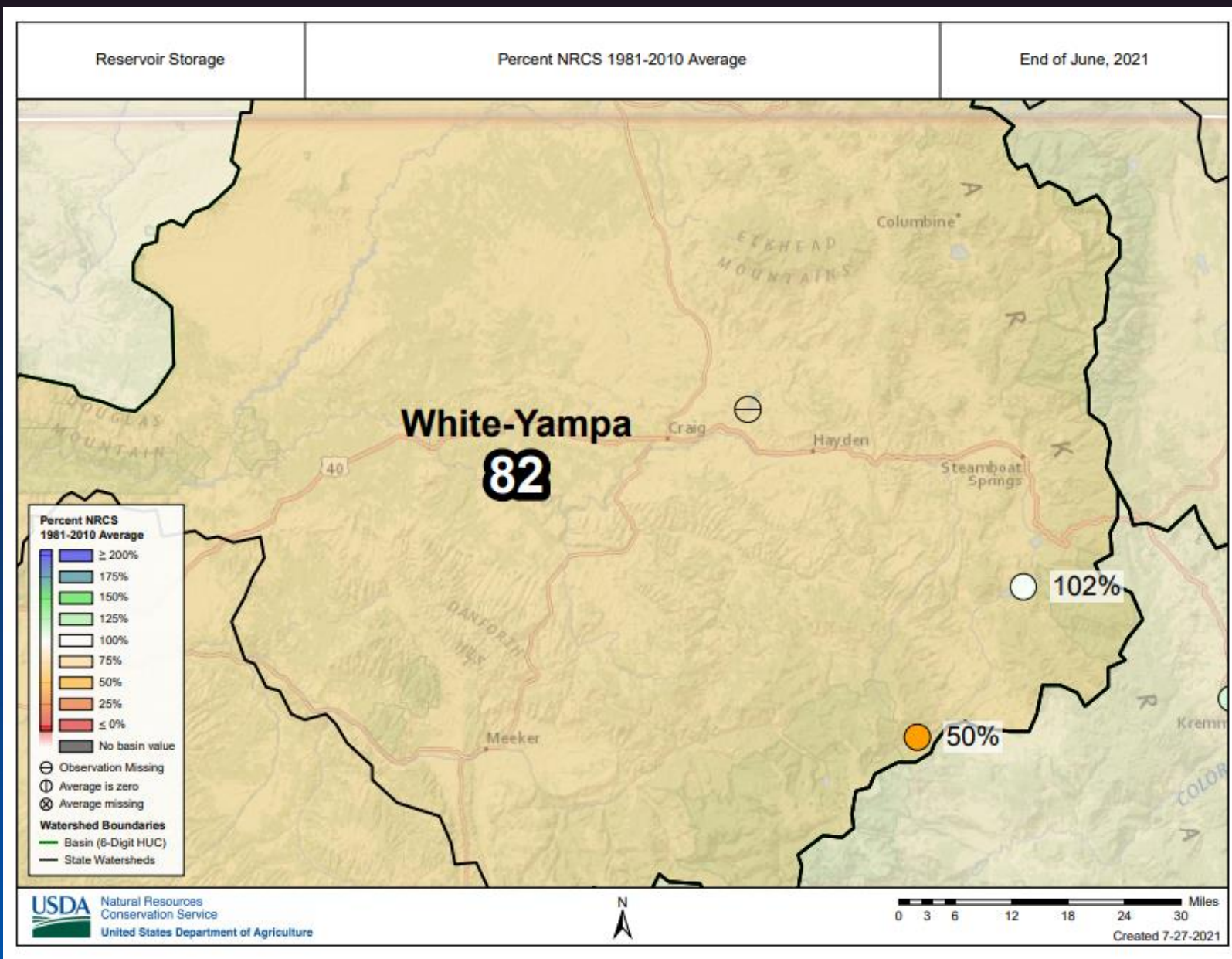


United States Department of Agriculture

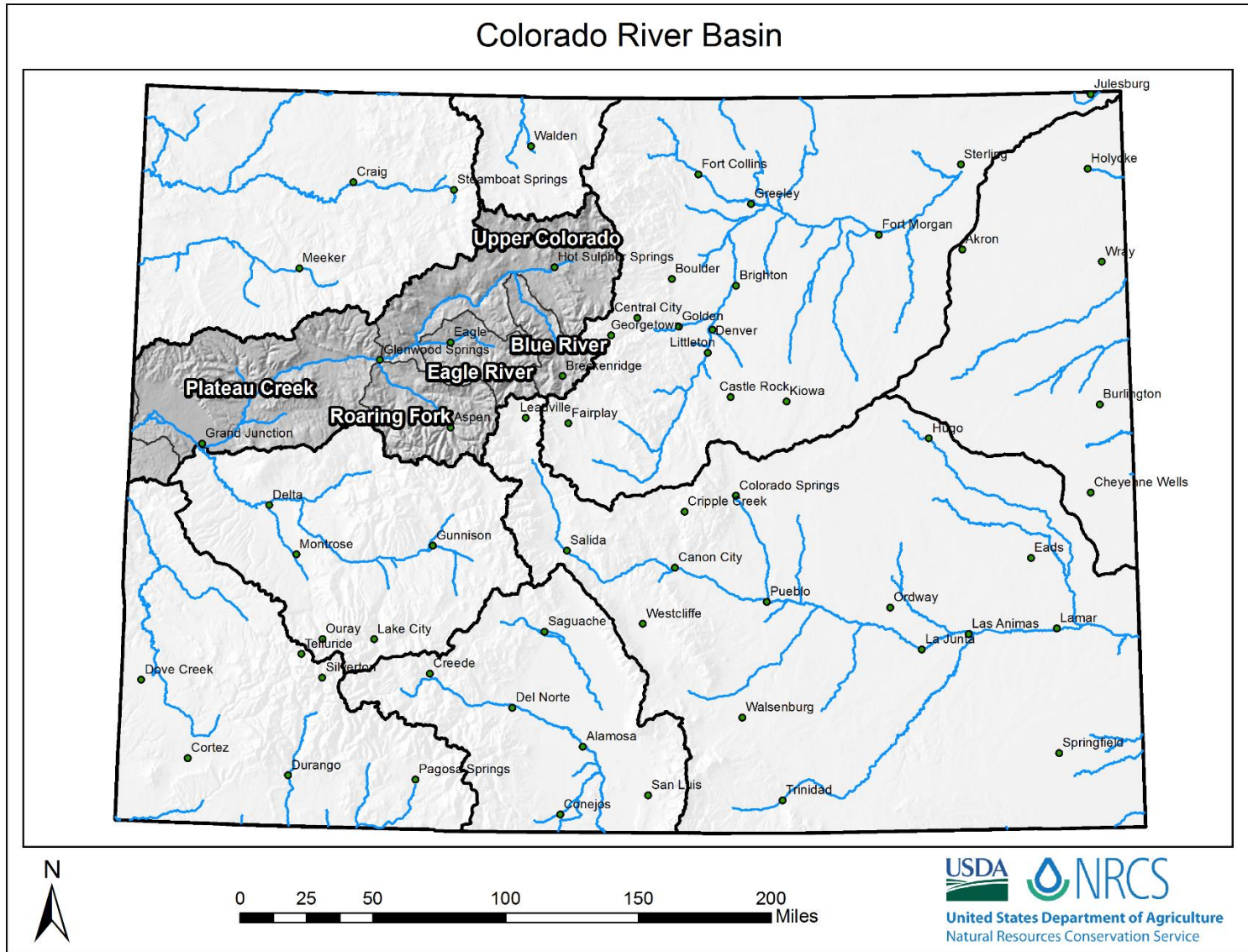
Natural Resources Conservation Service



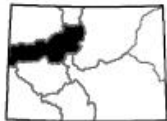
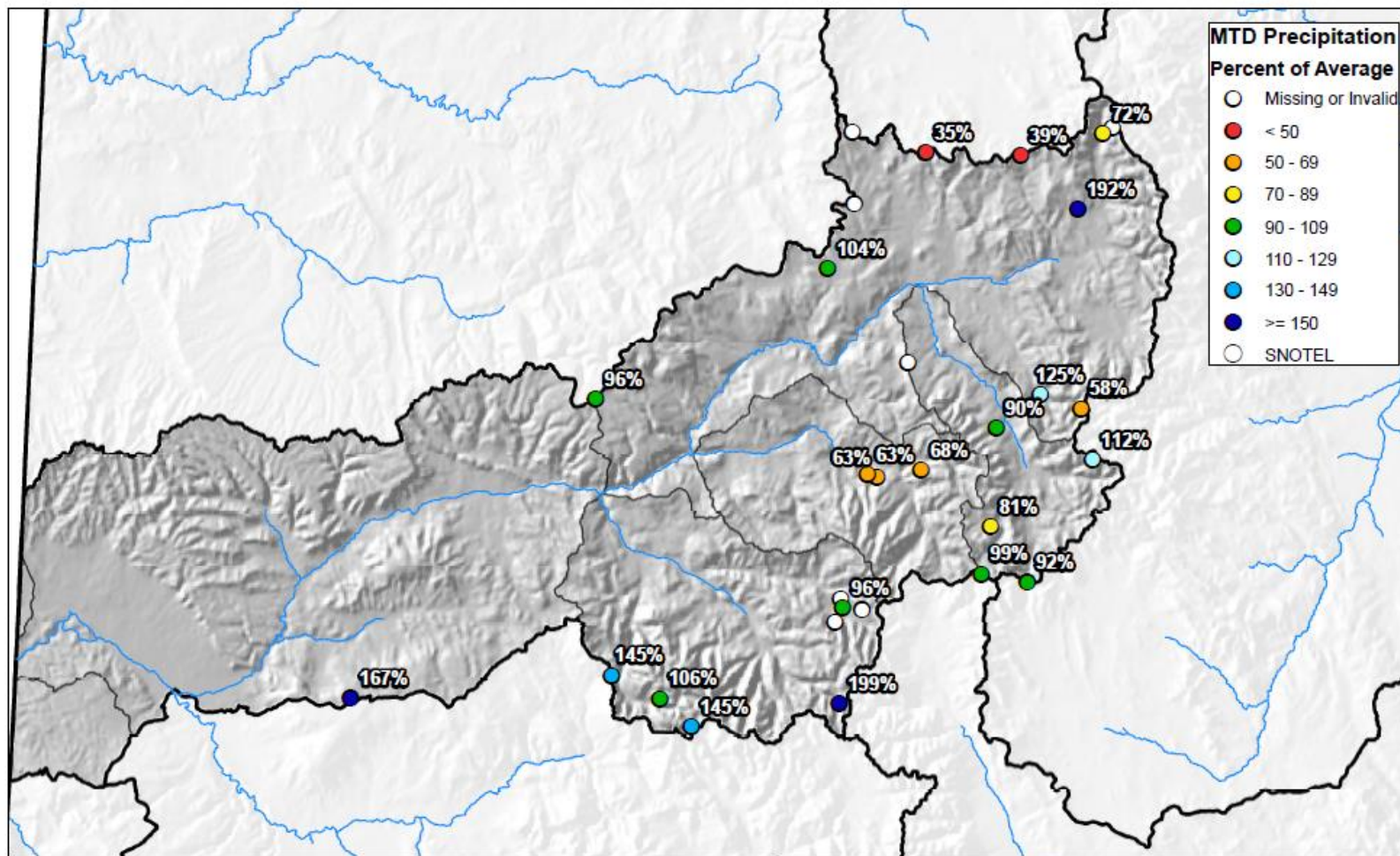
Colorado Snow Surveys



Major Basin Summary



Upper Colorado River Basin Month to Date Precipitation Summary Current as of Jul 23, 2021



0 10 20 40 60 80 Miles



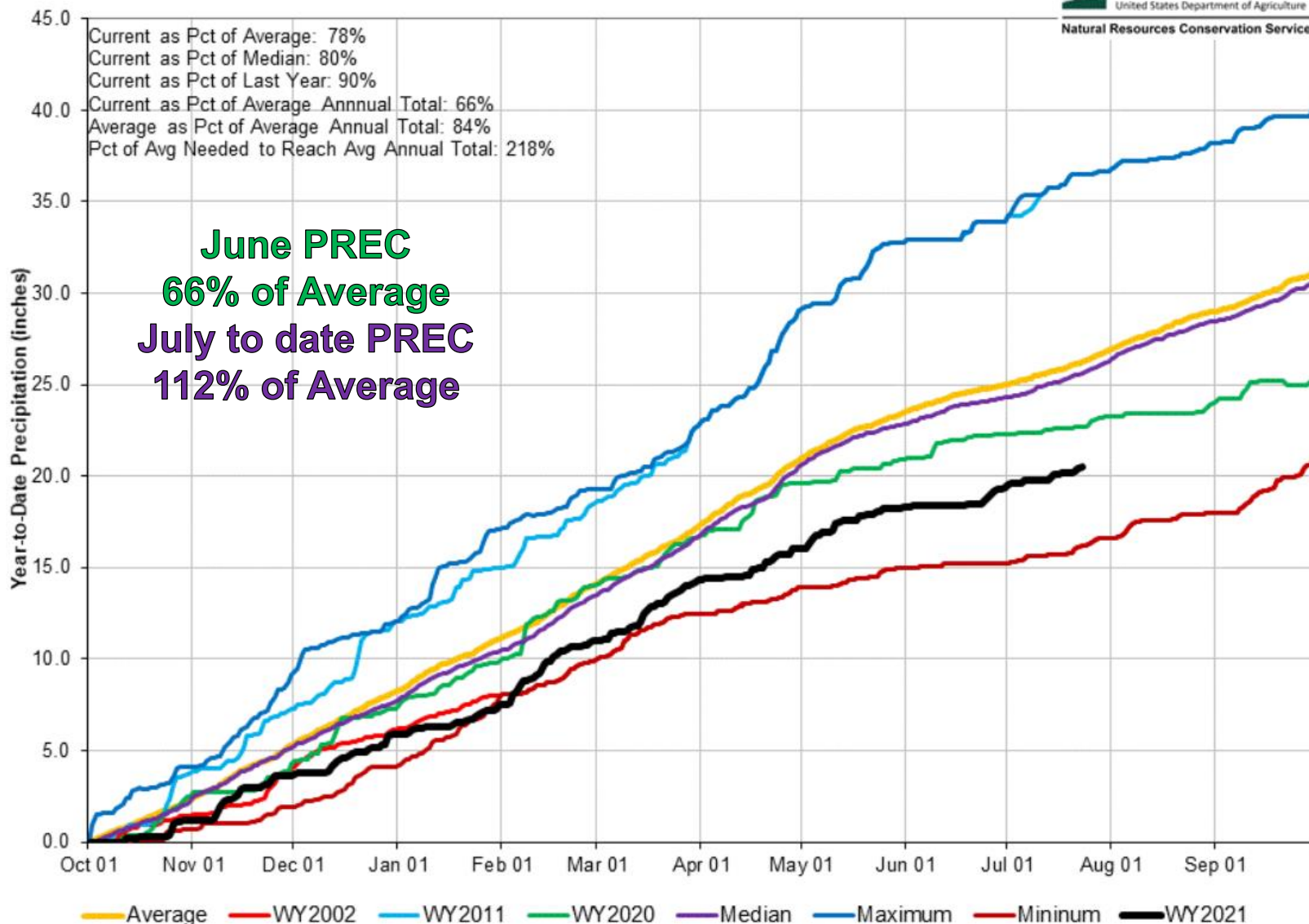
United States Department of Agriculture

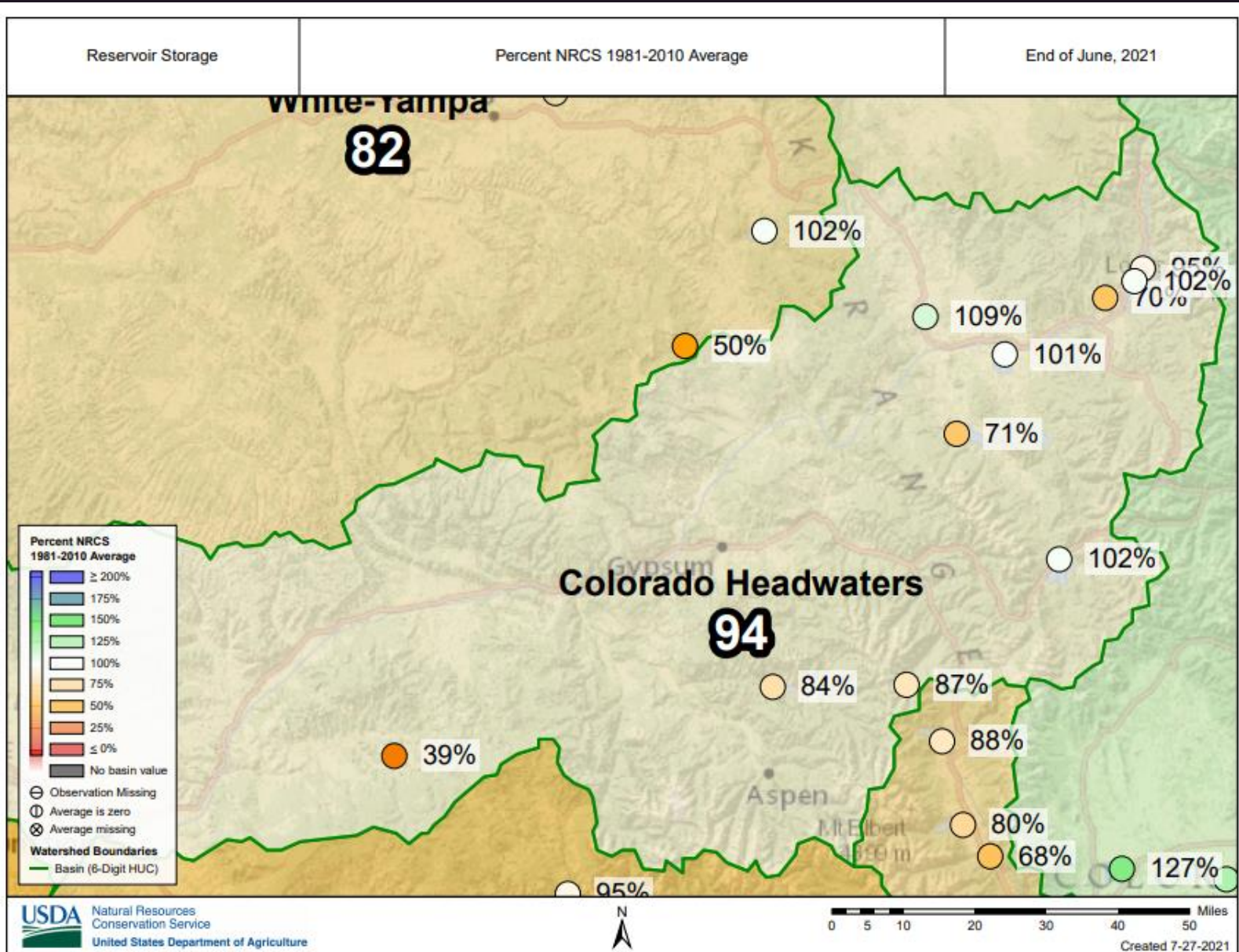
Natural Resources Conservation Service

Upper Colorado River Basin High/Low Year-to-Date Precipitation Summary

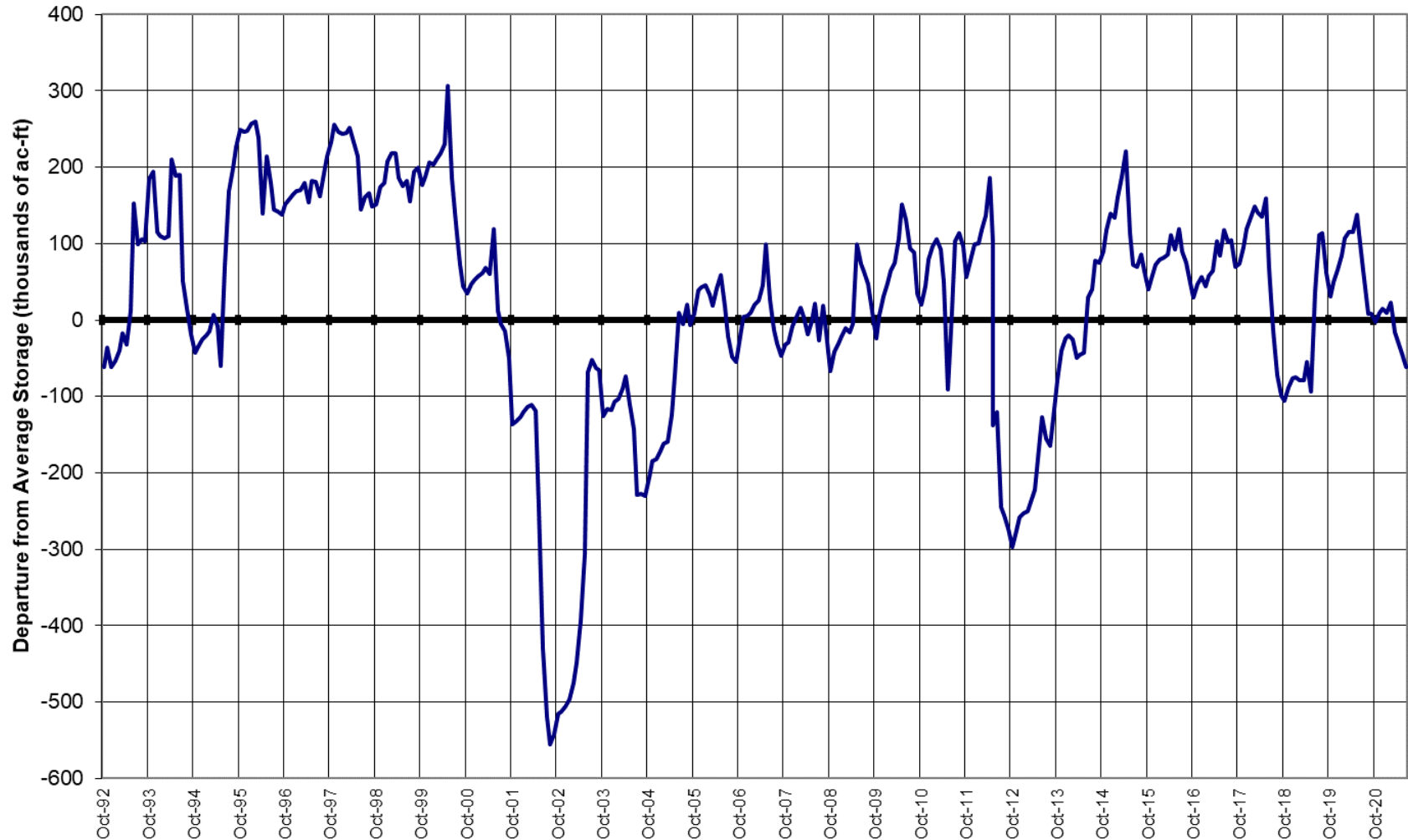
Based on Provisional SNOTEL data as of Jul 23, 2021

USDA
United States Department of Agriculture
Natural Resources Conservation Service



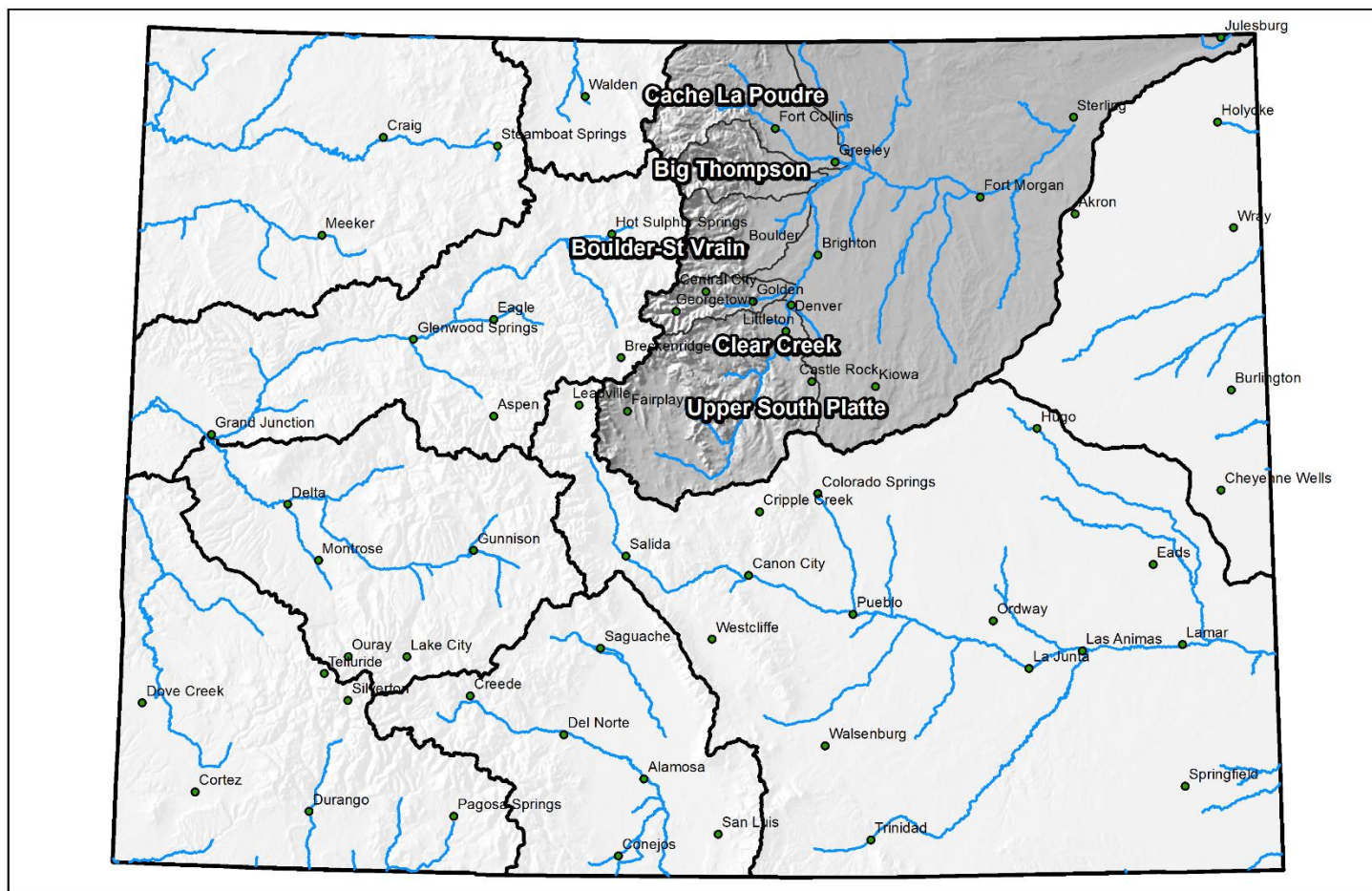


COLORADO RIVER BASIN Reservoir Storage Departure from Average



Major Basin Summary

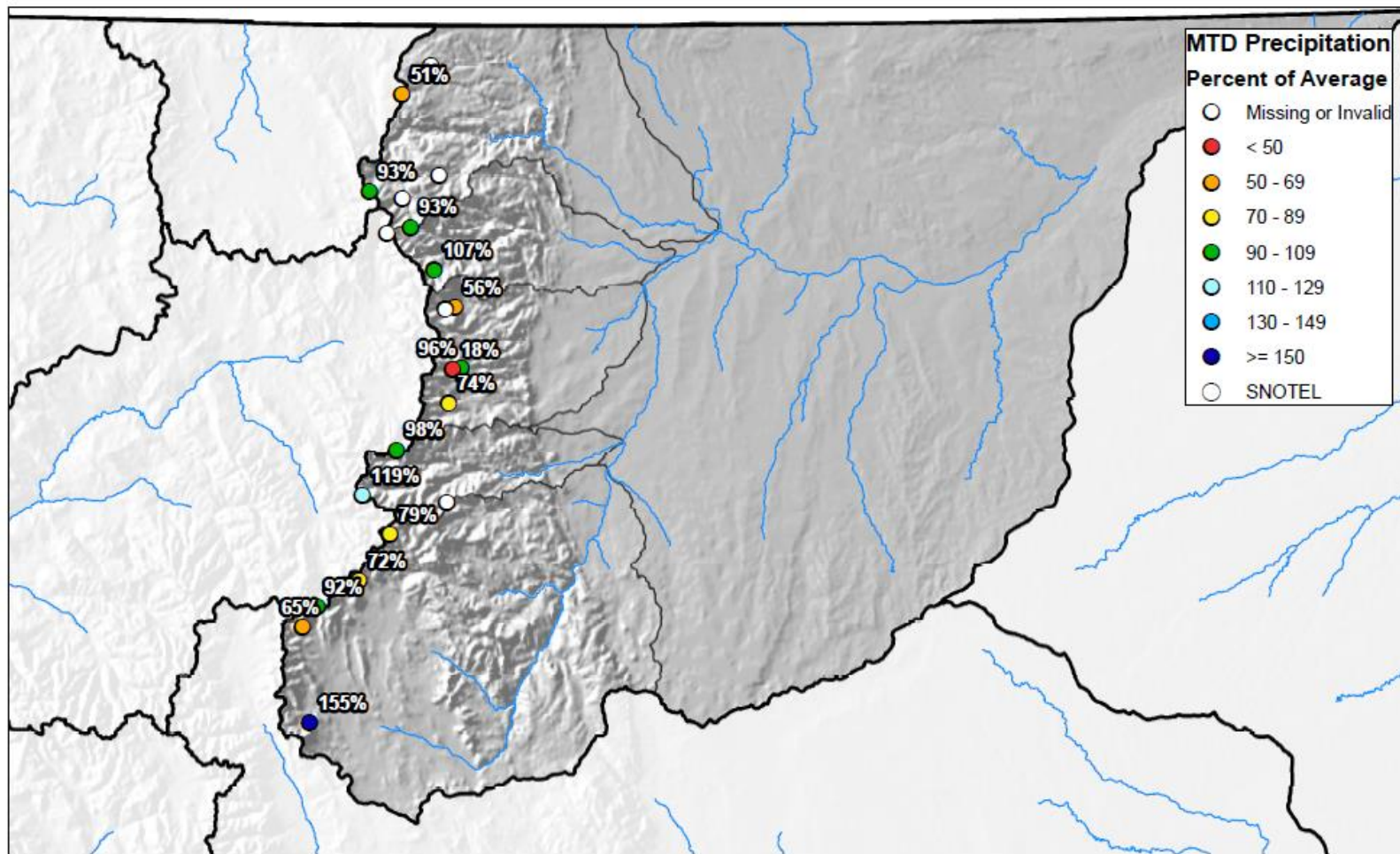
South Platte River Basin



0 25 50 100 150 200 Miles

South Platte River Basin Month to Date Precipitation Summary

Current as of Jul 23, 2021



0 10 20 40 60 80 Miles

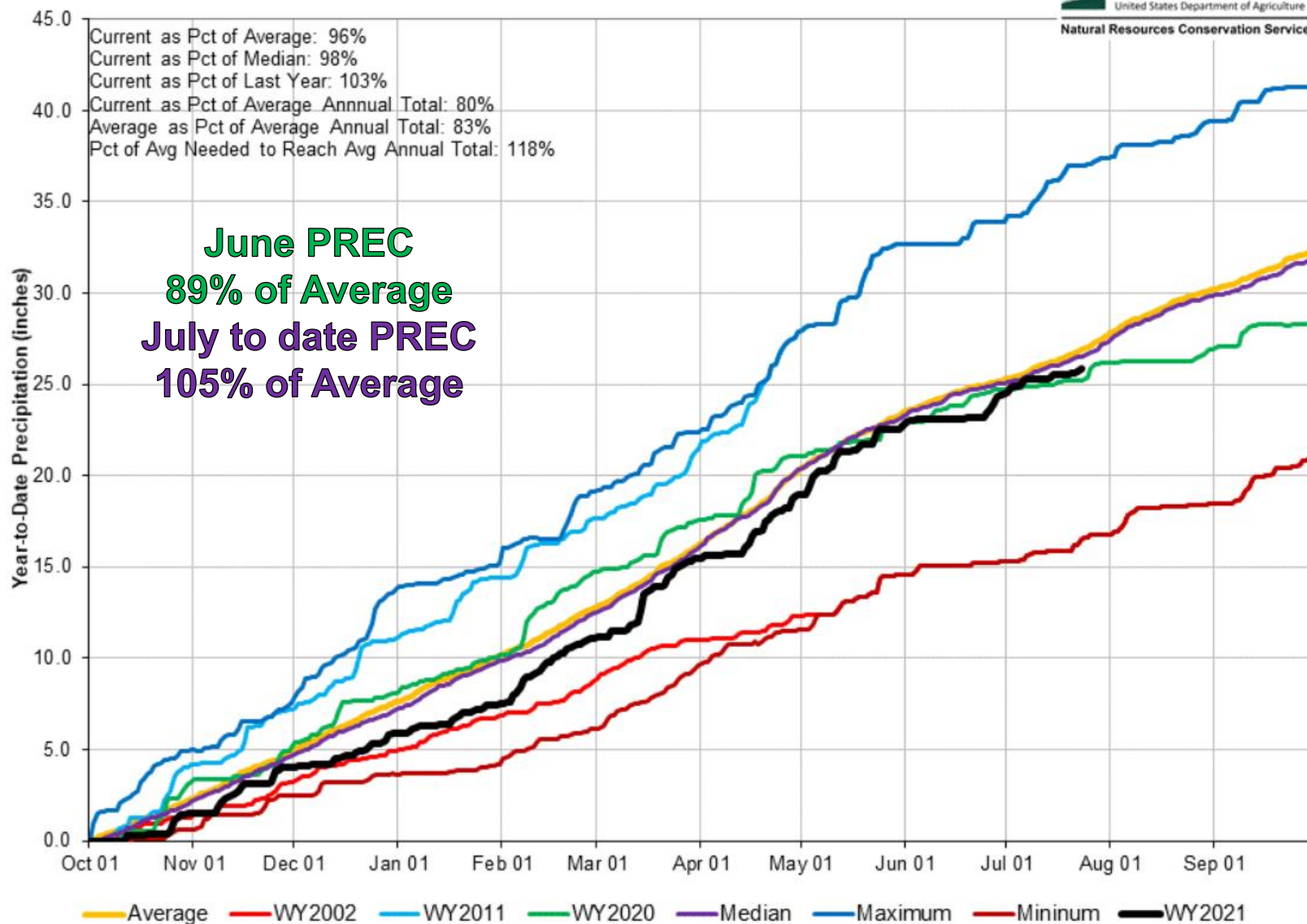
South Platte River Basin High/Low Year-to-Date Precipitation Summary

Based on Provisional SNOTEL data as of Jul 23, 2021

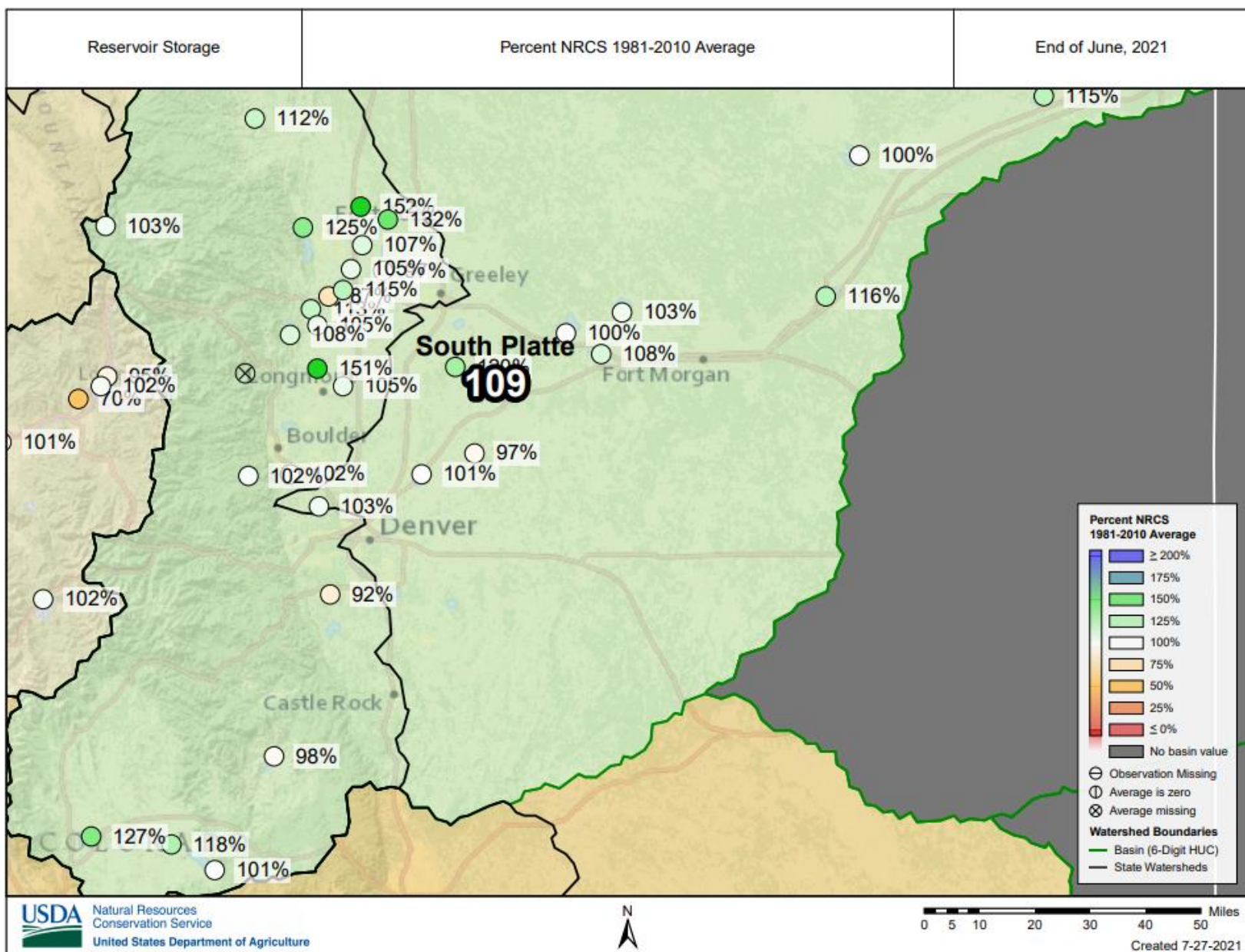


United States Department of Agriculture

Natural Resources Conservation Service

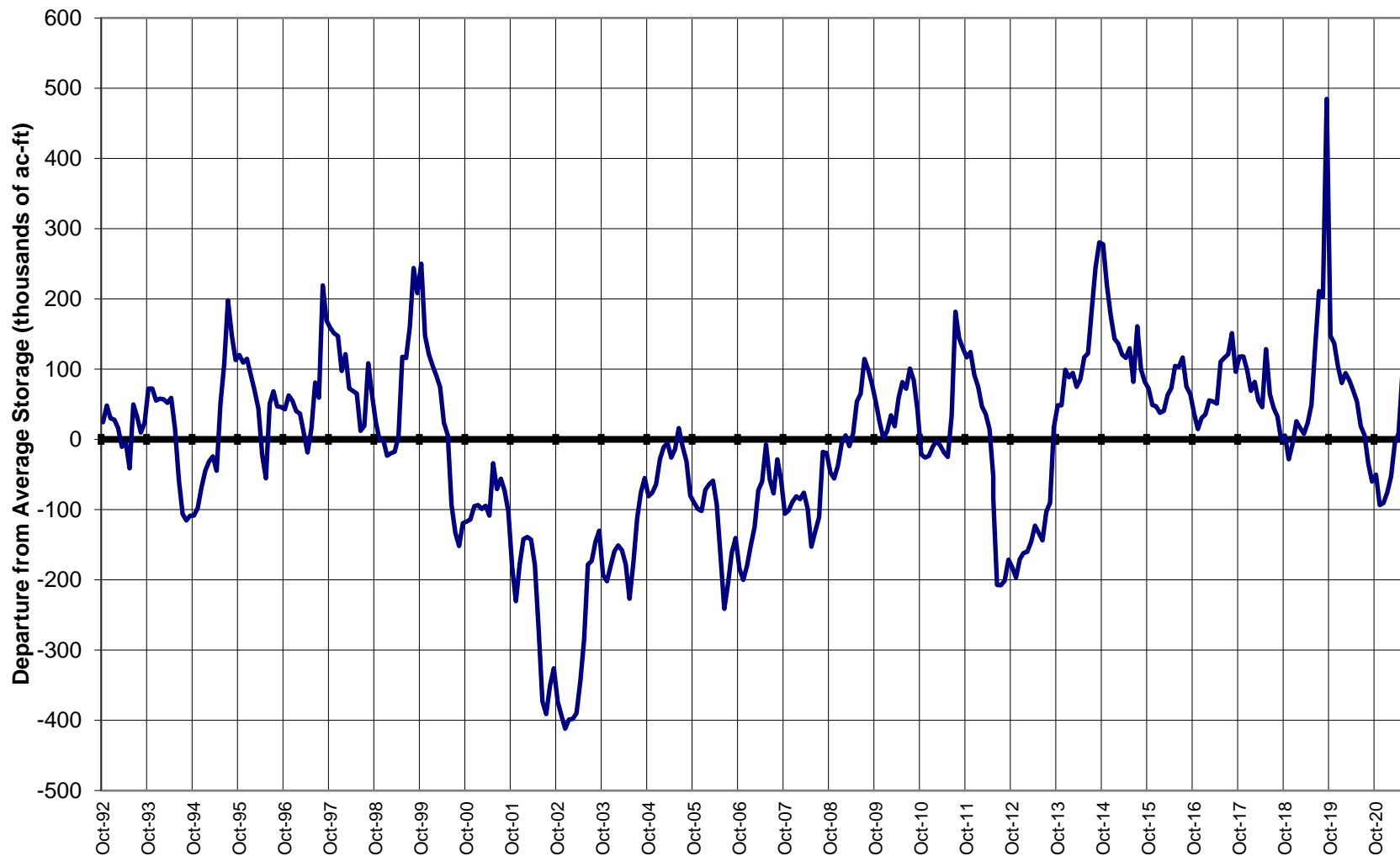


Colorado Snow Surveys



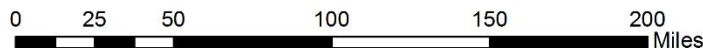
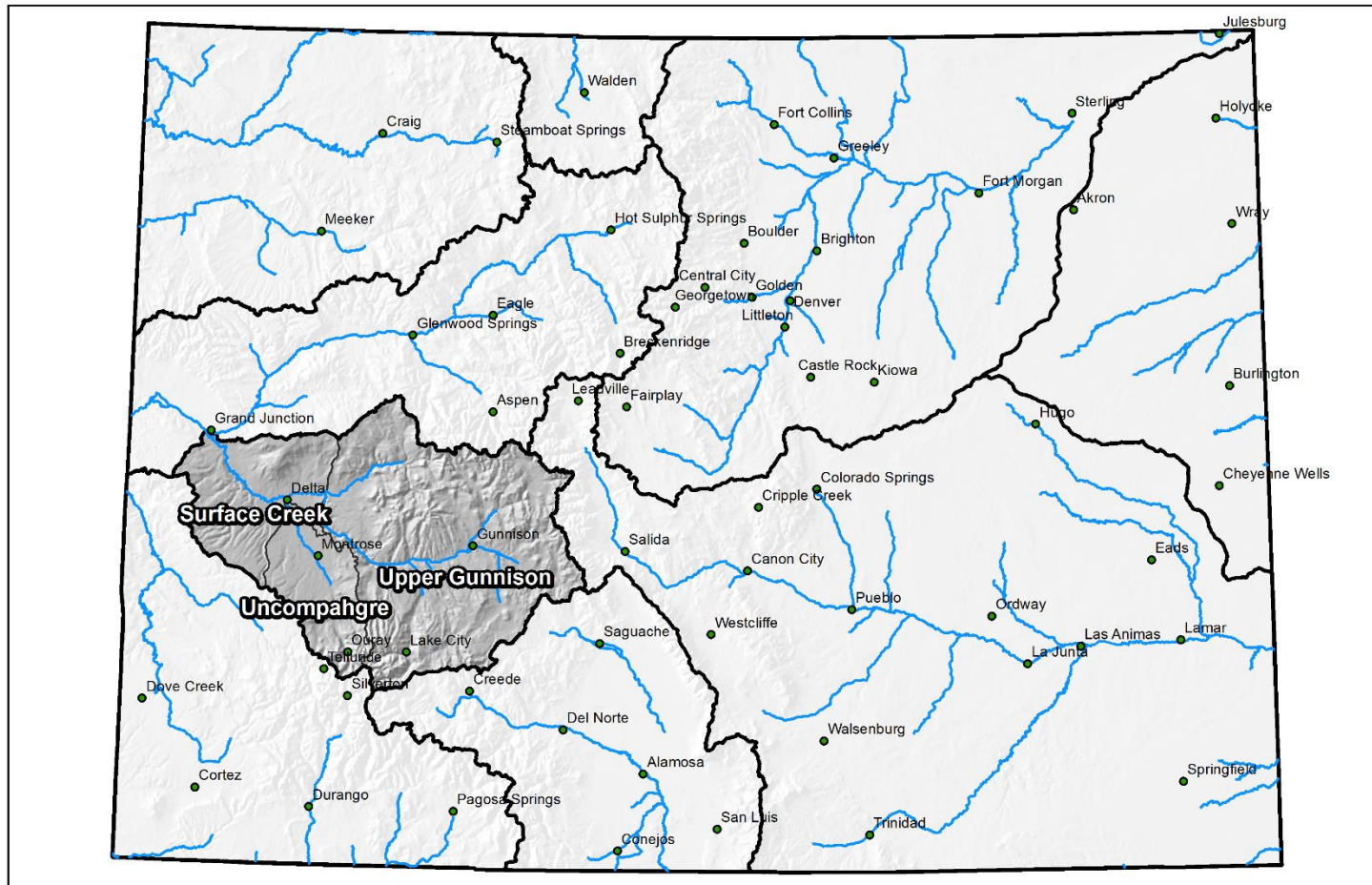


SOUTH PLATTE RIVER BASIN Reservoir Storage Departure from Average



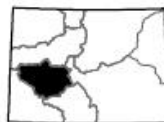
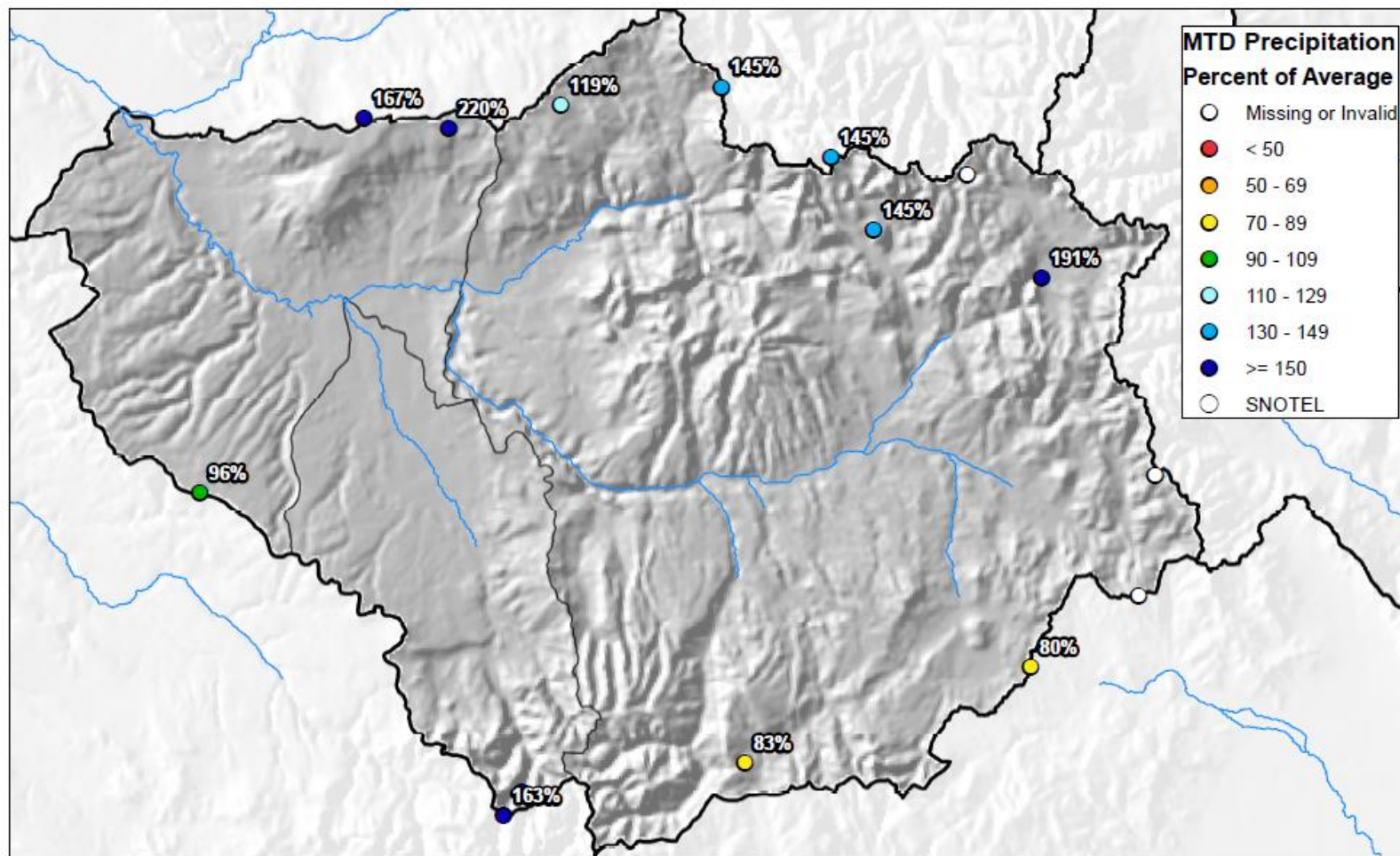
Major Basin Summary

Gunnison River Basin



Gunnison River Basin Month to Date Precipitation Summary

Current as of Jul 23, 2021



0 5 10 20 30 40 Miles



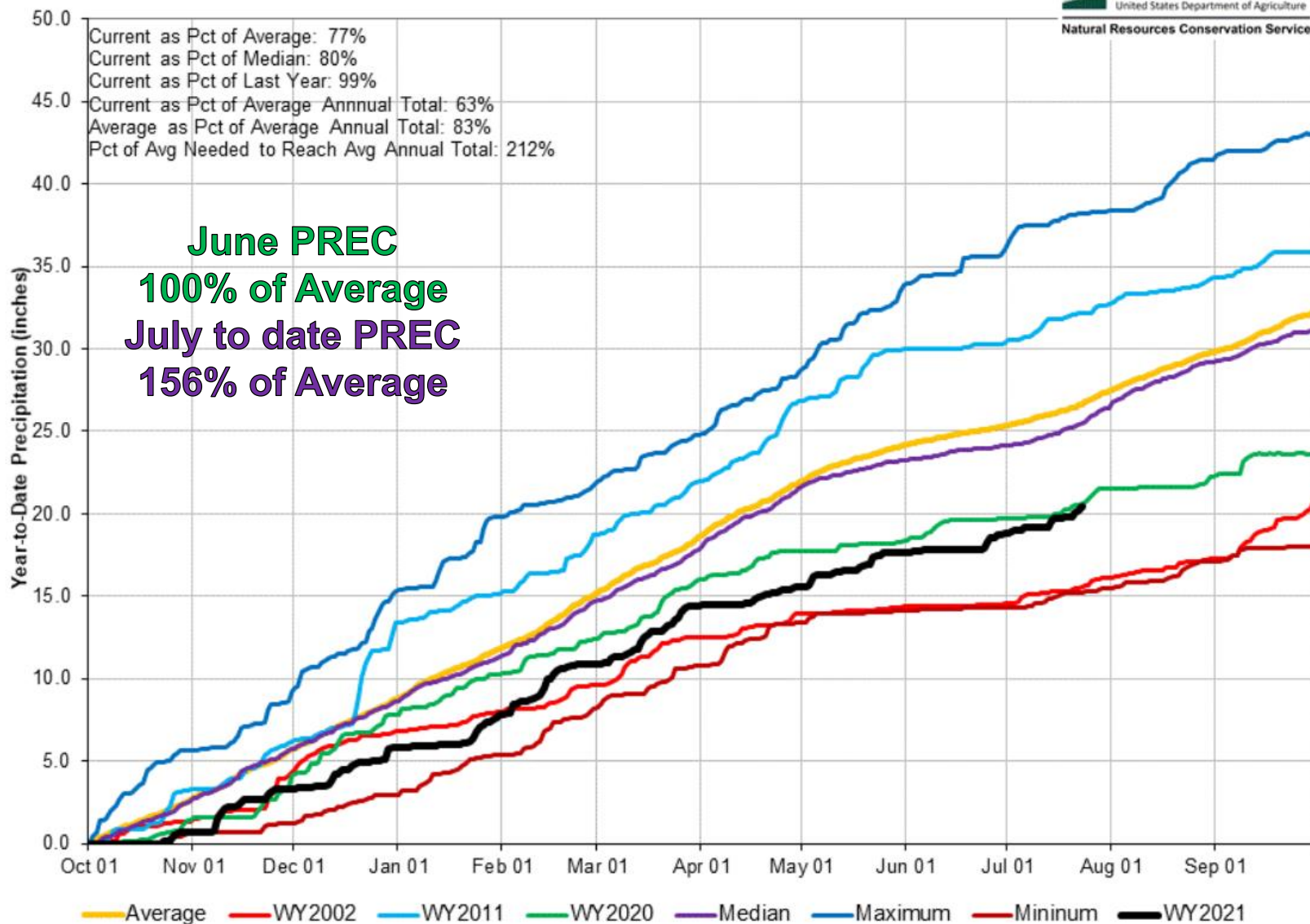
United States Department of Agriculture

Natural Resources Conservation Service

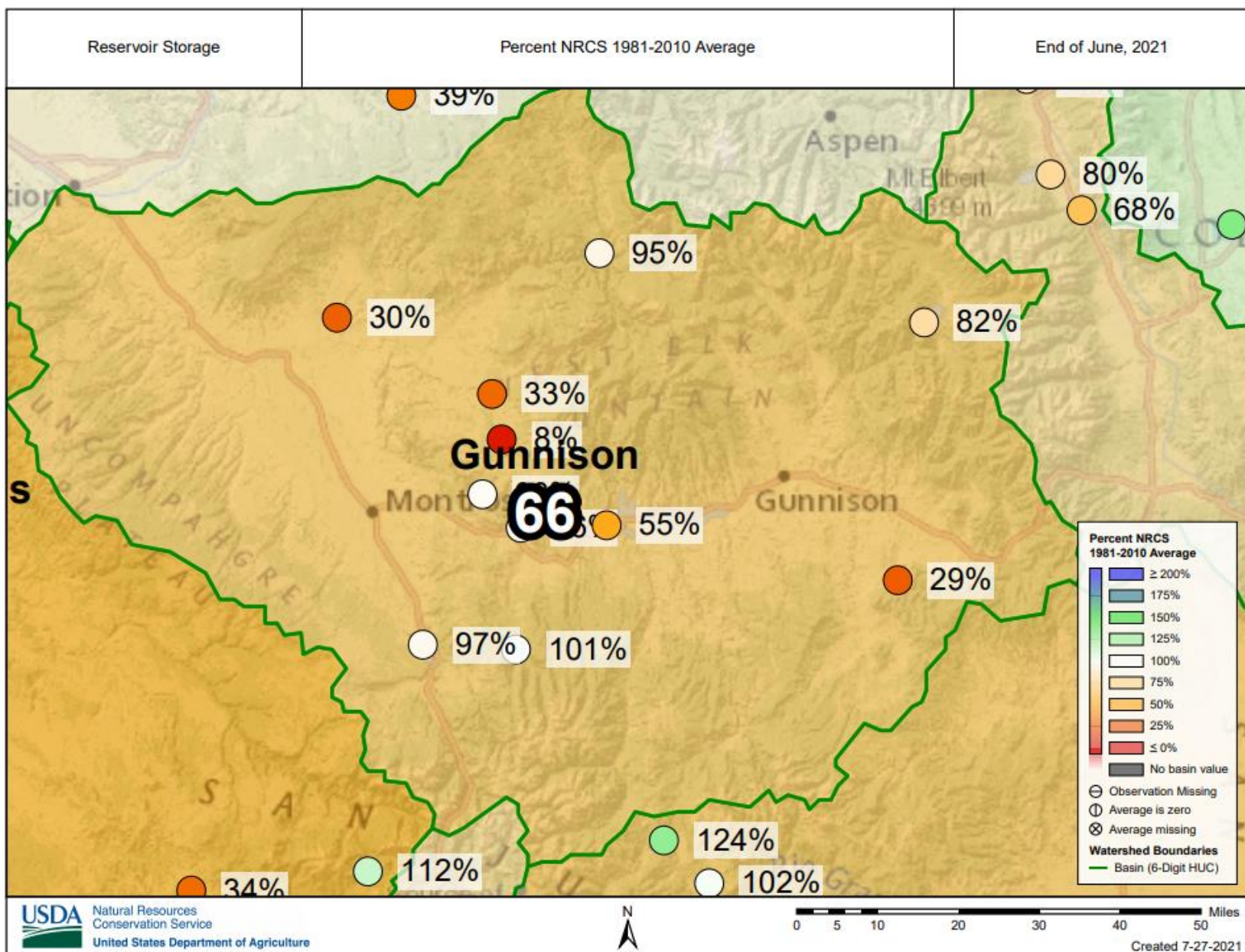
Gunnison River Basin High/Low Year-to-Date Precipitation Summary

Based on Provisional SNOTEL data as of Jul 23, 2021

USDA
United States Department of Agriculture
Natural Resources Conservation Service



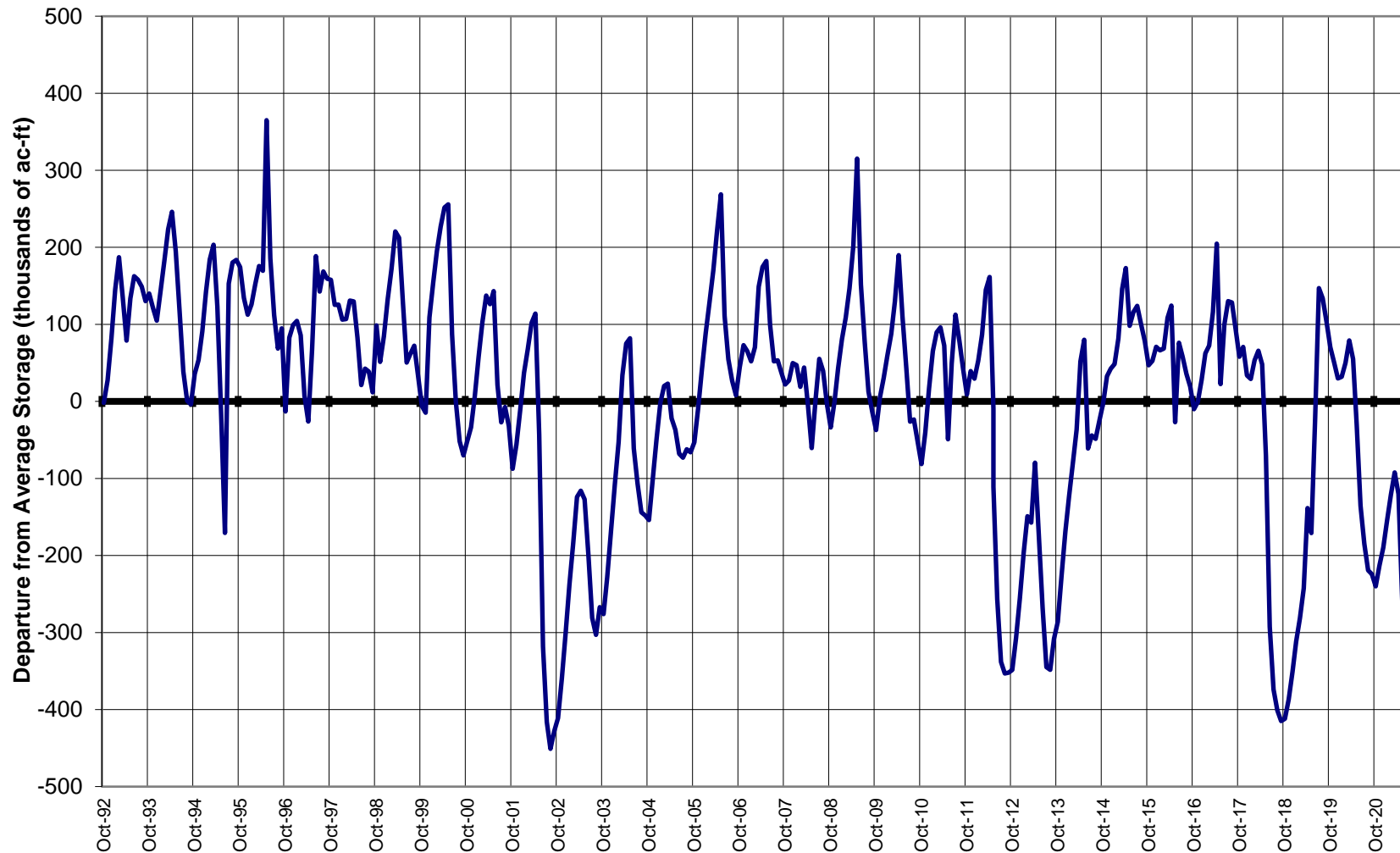
Colorado Snow Surveys





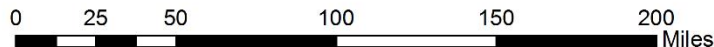
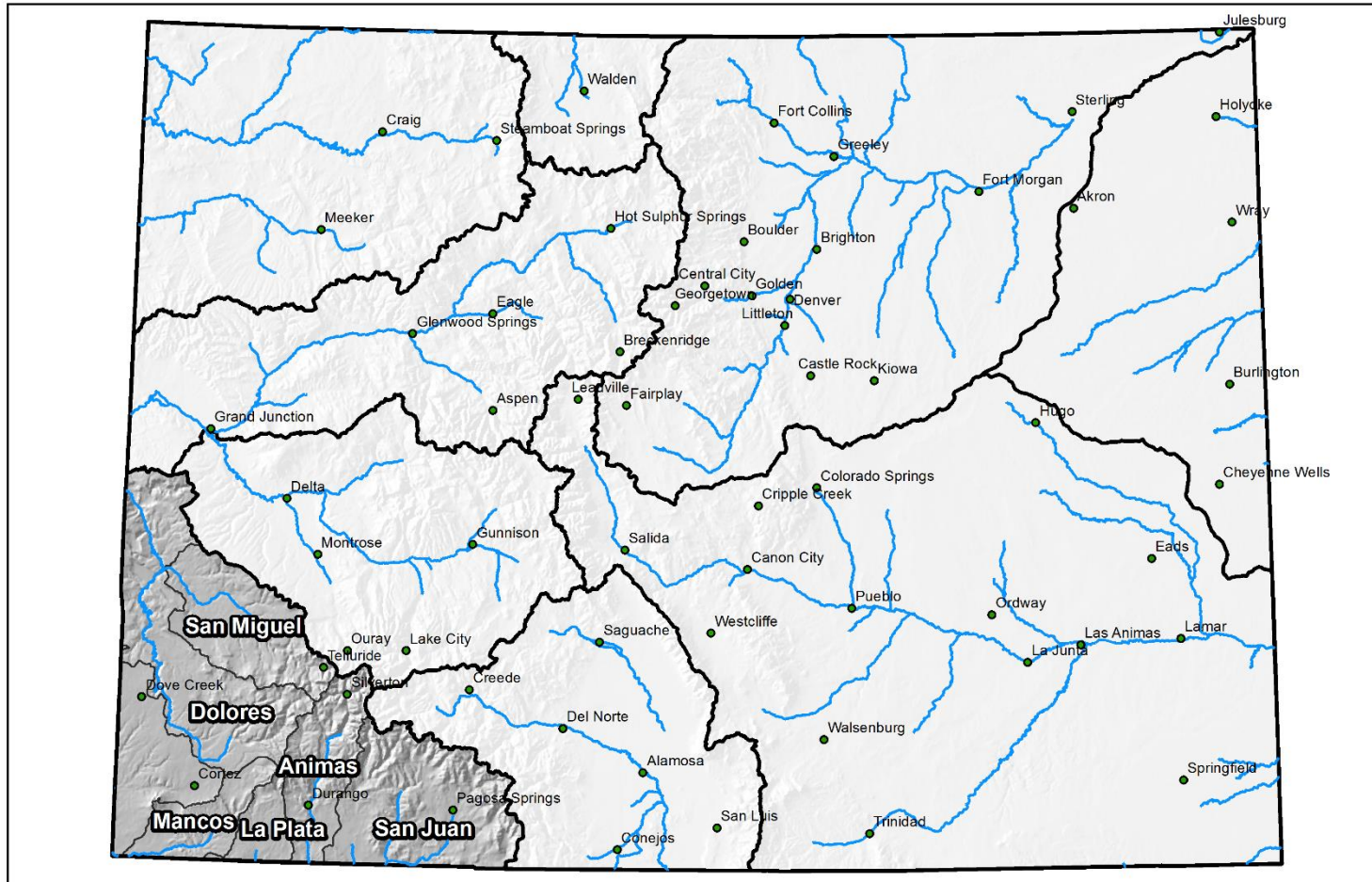
GUNNISON RIVER BASIN

Reservoir Storage Departure from Average



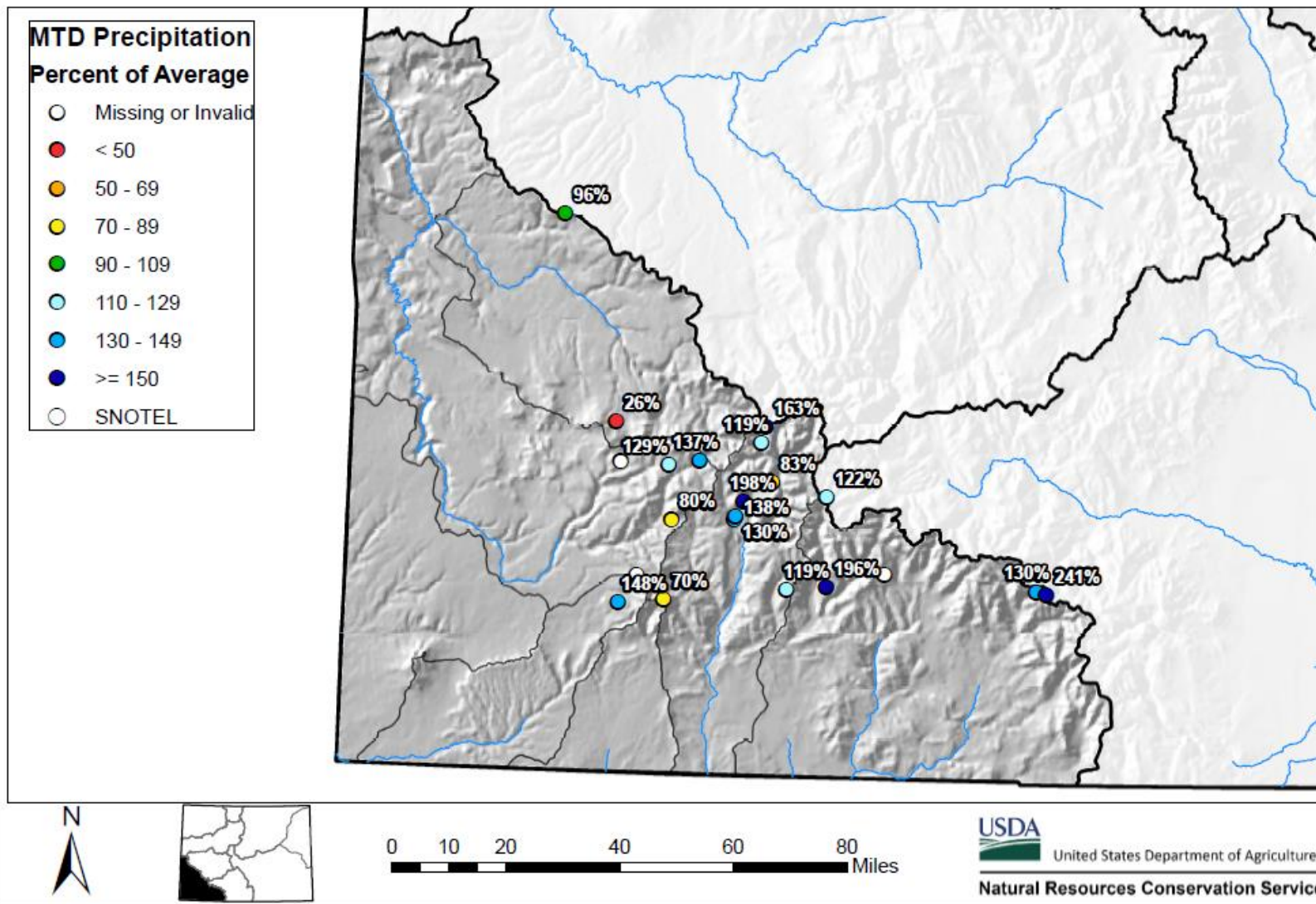
Major Basin Summary

San Miguel, Dolores, Animas, and San Juan River Basins



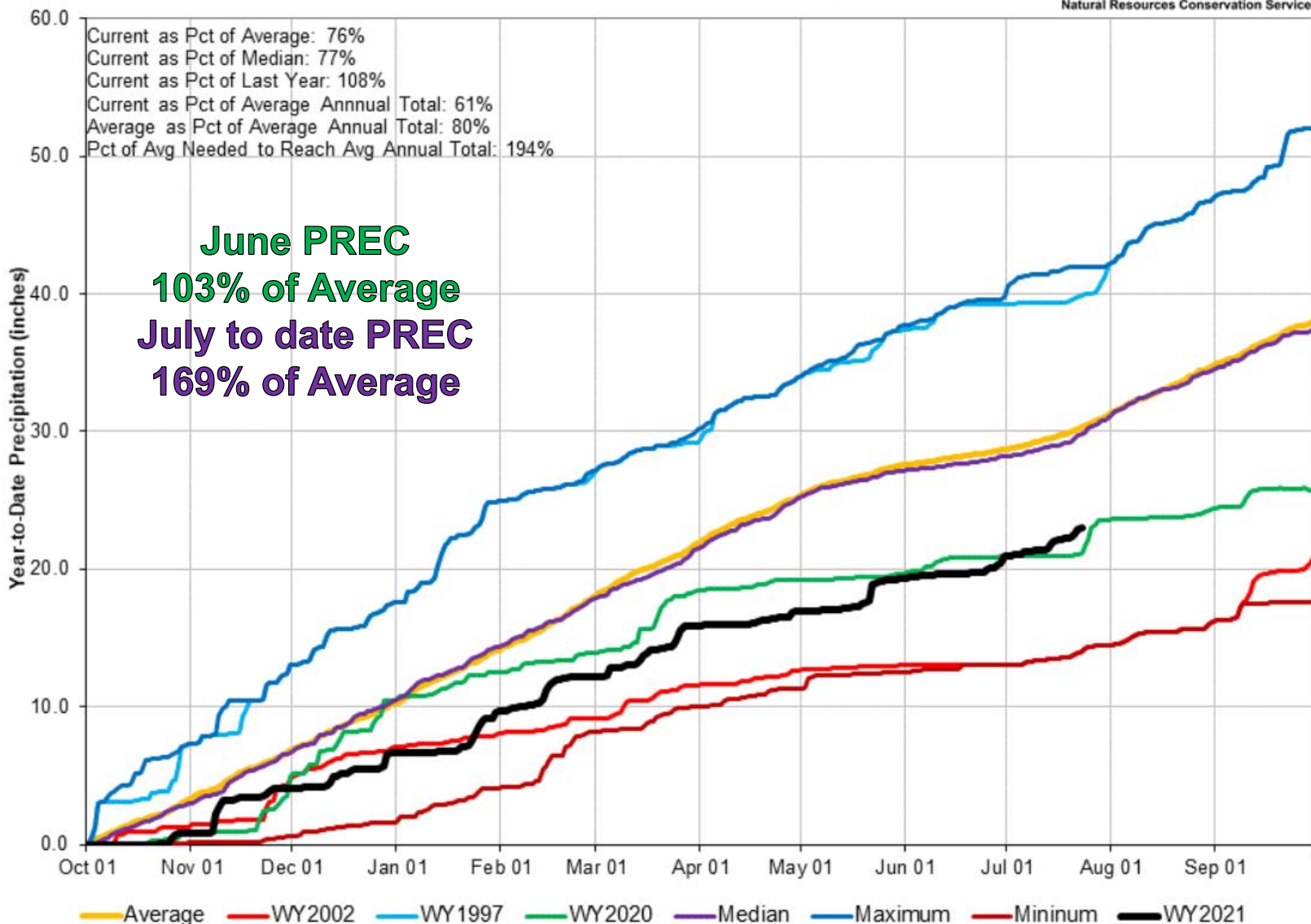
San Miguel, Dolores, Animas, and San Juan River Basins Month to Date Precipitation Summary

Current as of Jul 23, 2021

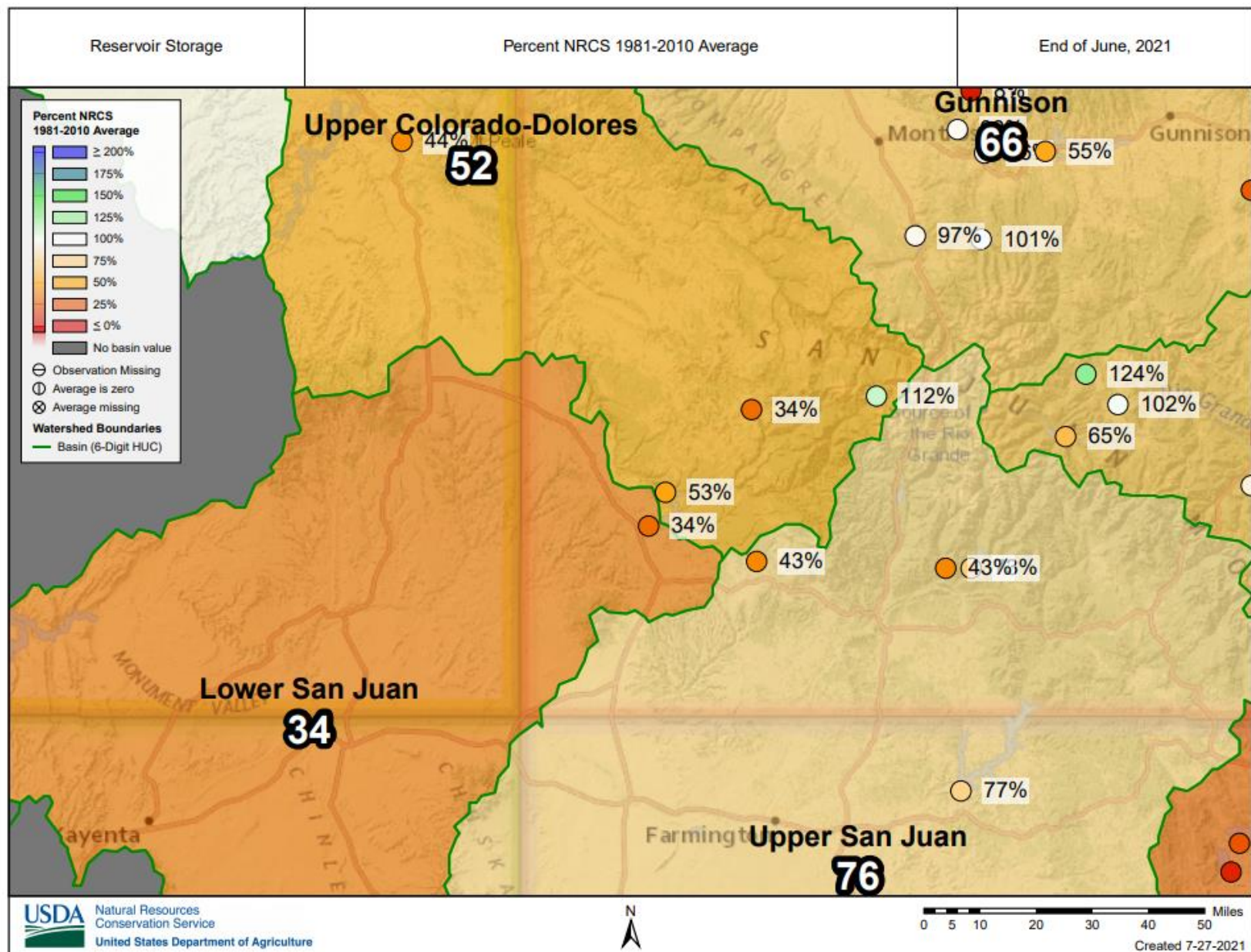


San Miguel, Dolores, Animas and San Juan River Basins High/Low Year-to-Date Precipitation Summary *Based on Provisional SNOTEL data as of Jul 23, 2021*

USDA
United States Department of Agriculture
Natural Resources Conservation Service



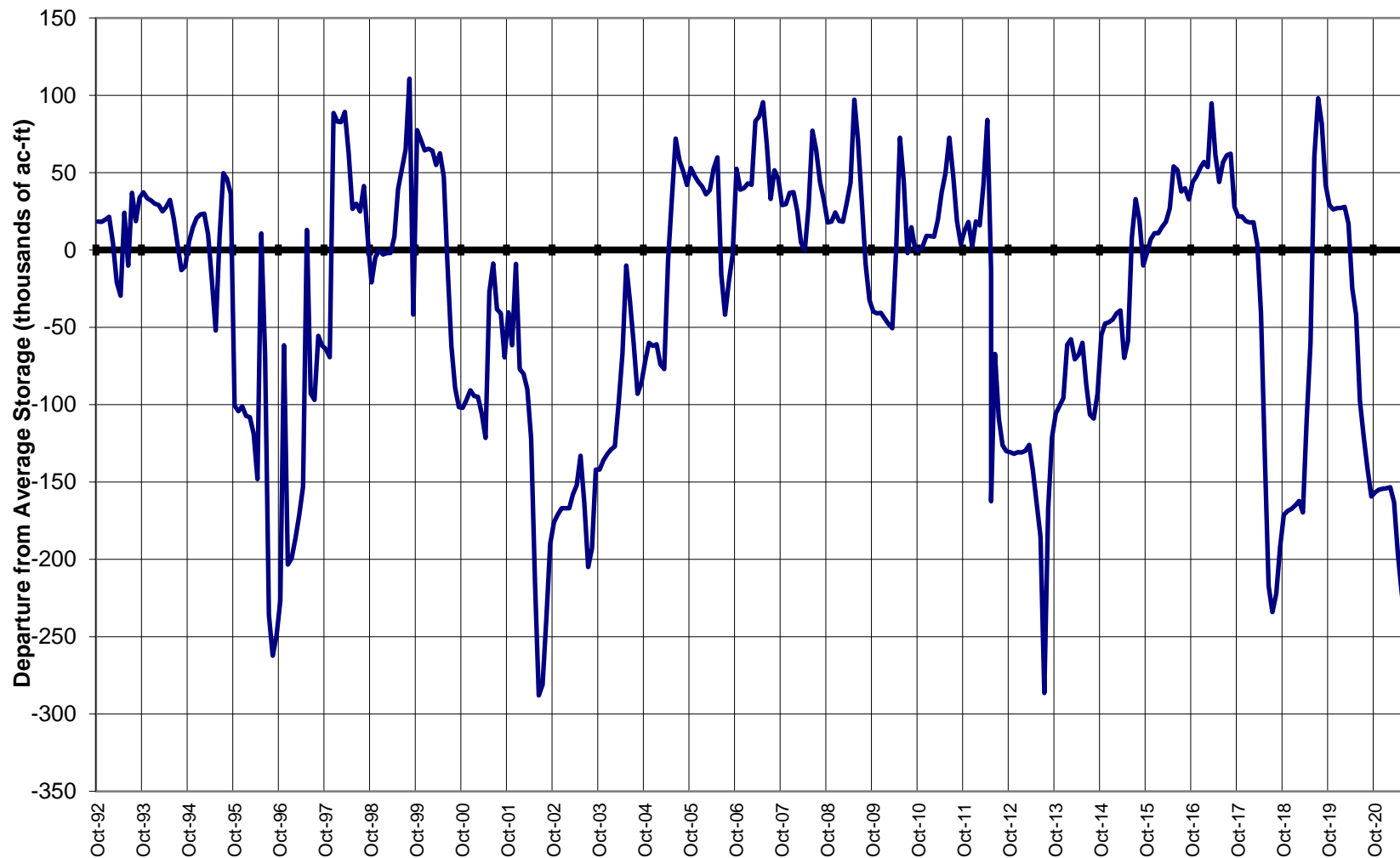
Colorado Snow Surveys





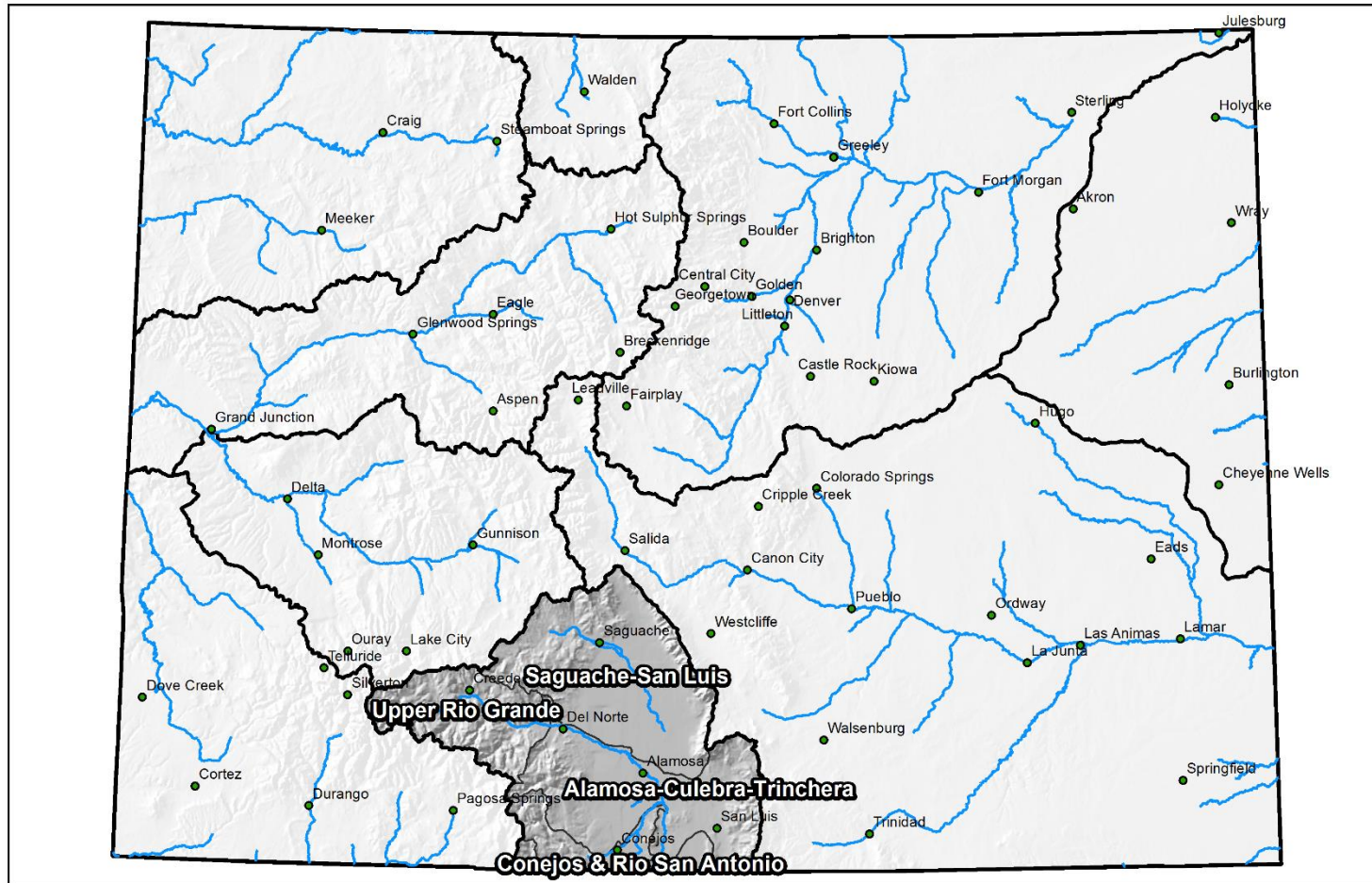
SAN MIGUEL, DOLORES, ANIMAS AND SAN JUAN RIVER BASINS

Reservoir Storage Departure from Average



Major Basin Summary

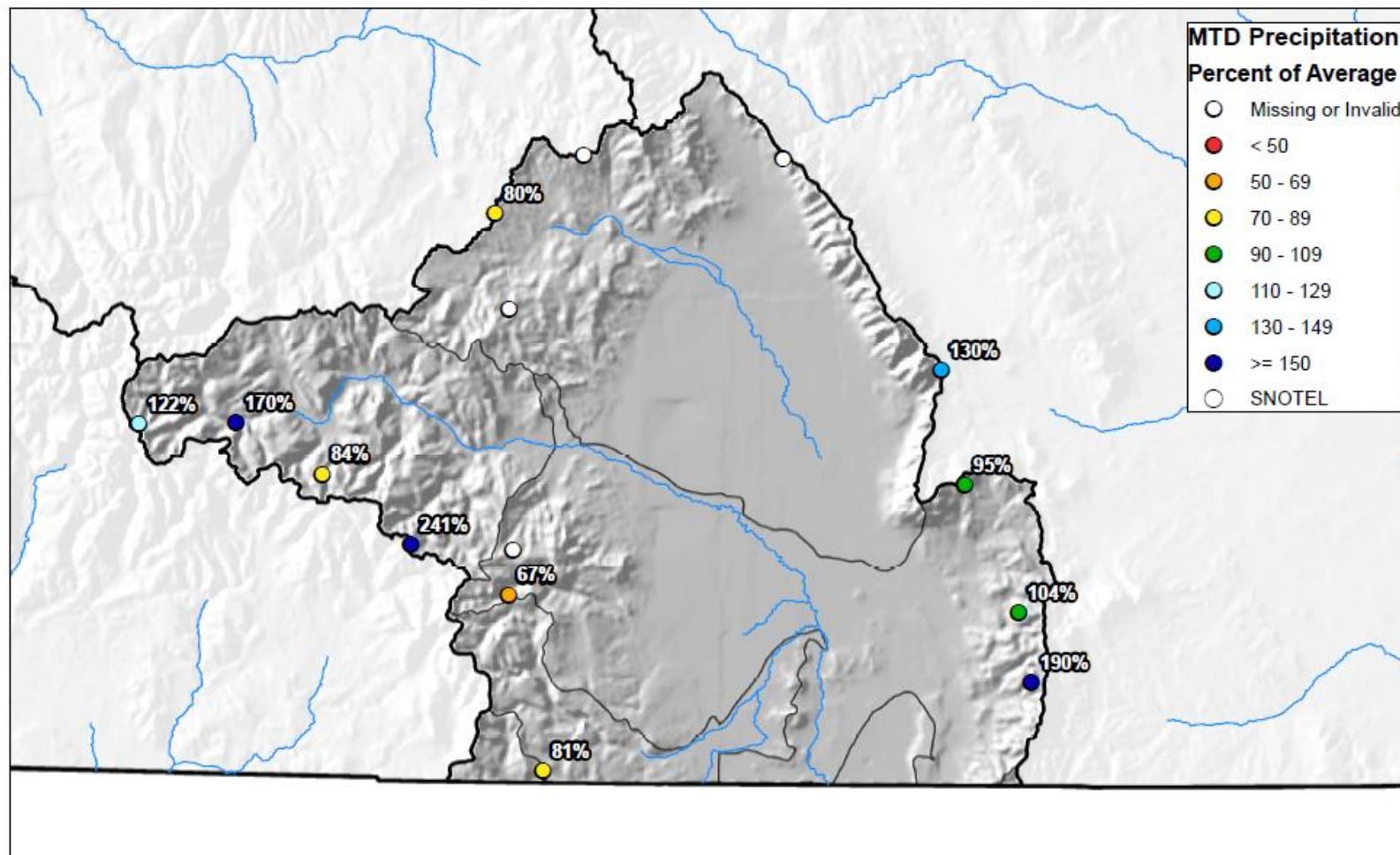
Upper Rio Grande River Basin



0 25 50 100 150 200 Miles

Upper Rio Grande River Basin Month to Date Precipitation Summary

Current as of Jul 23, 2021

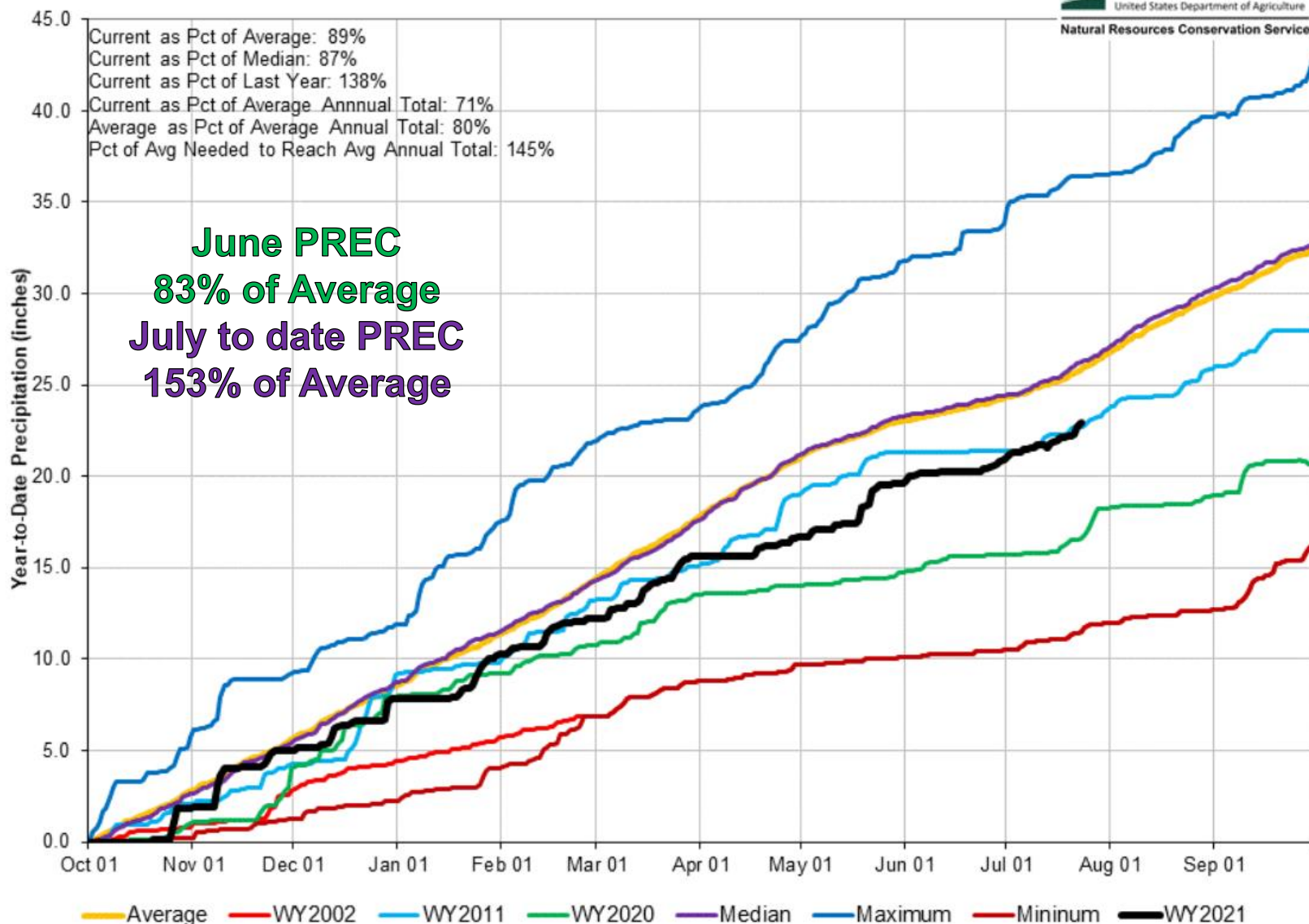


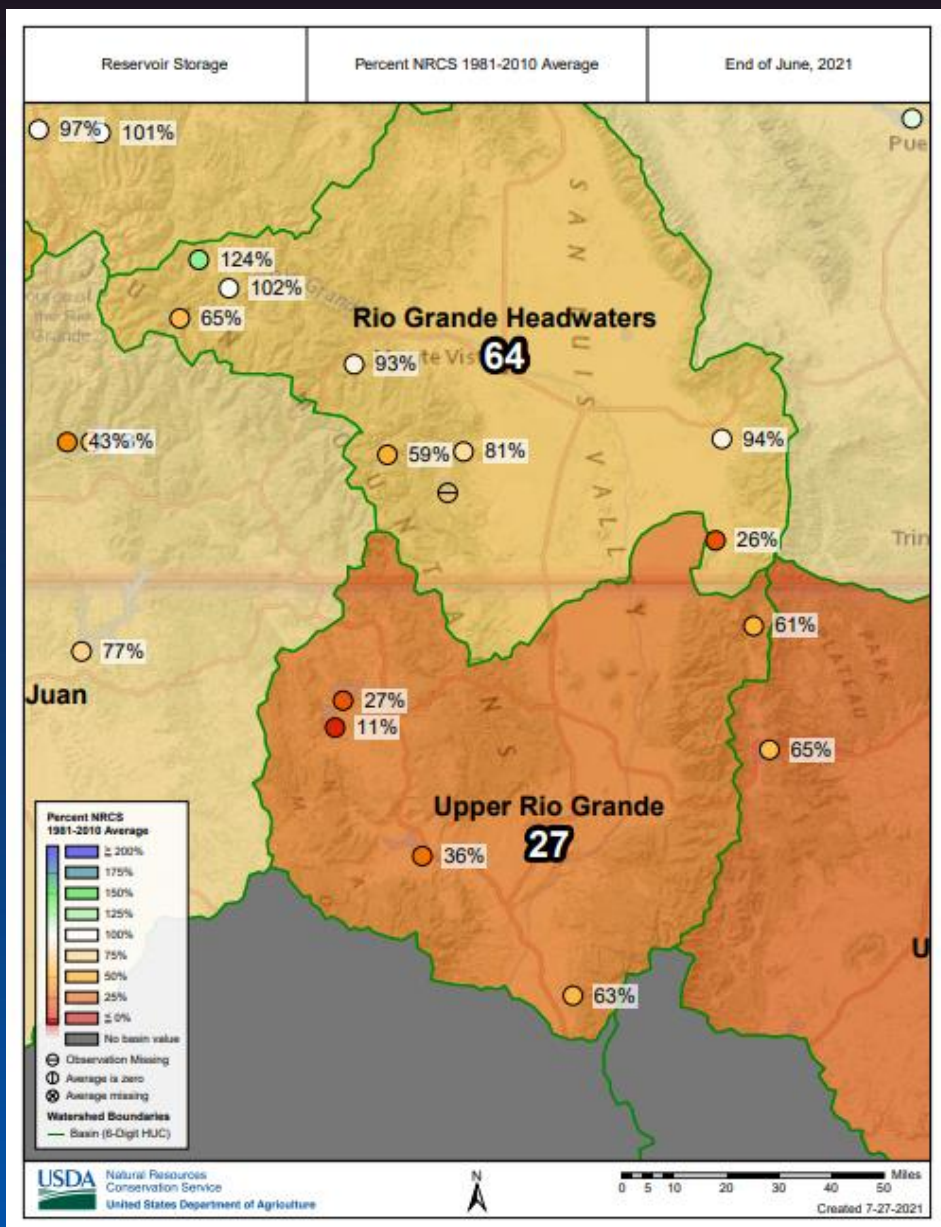
0 10 20 40 60 80 Miles

Upper Rio Grande River Basin High/Low Year-to-Date Precipitation Summary

Based on Provisional SNOTEL data as of Jul 23, 2021

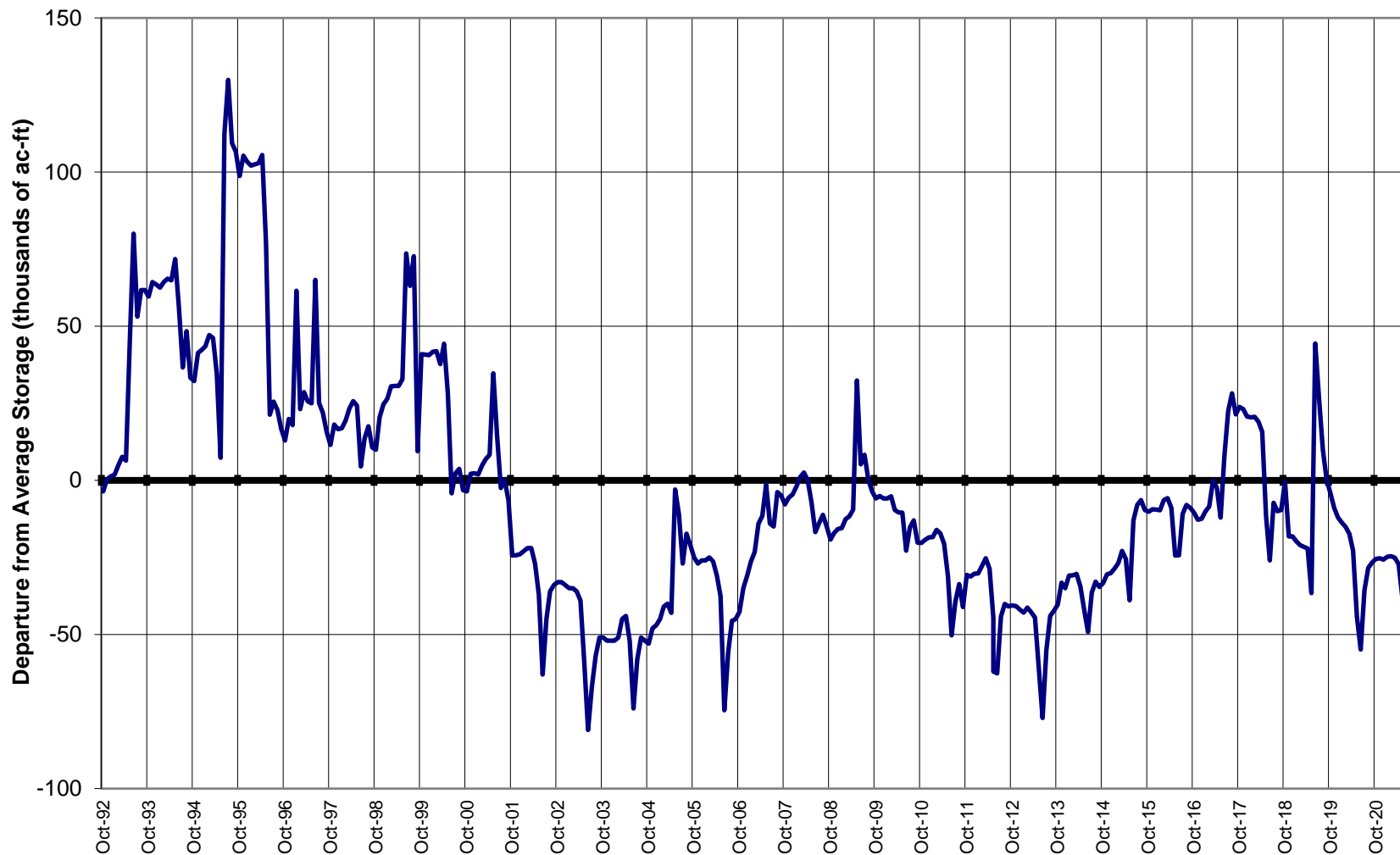
USDA
United States Department of Agriculture
Natural Resources Conservation Service





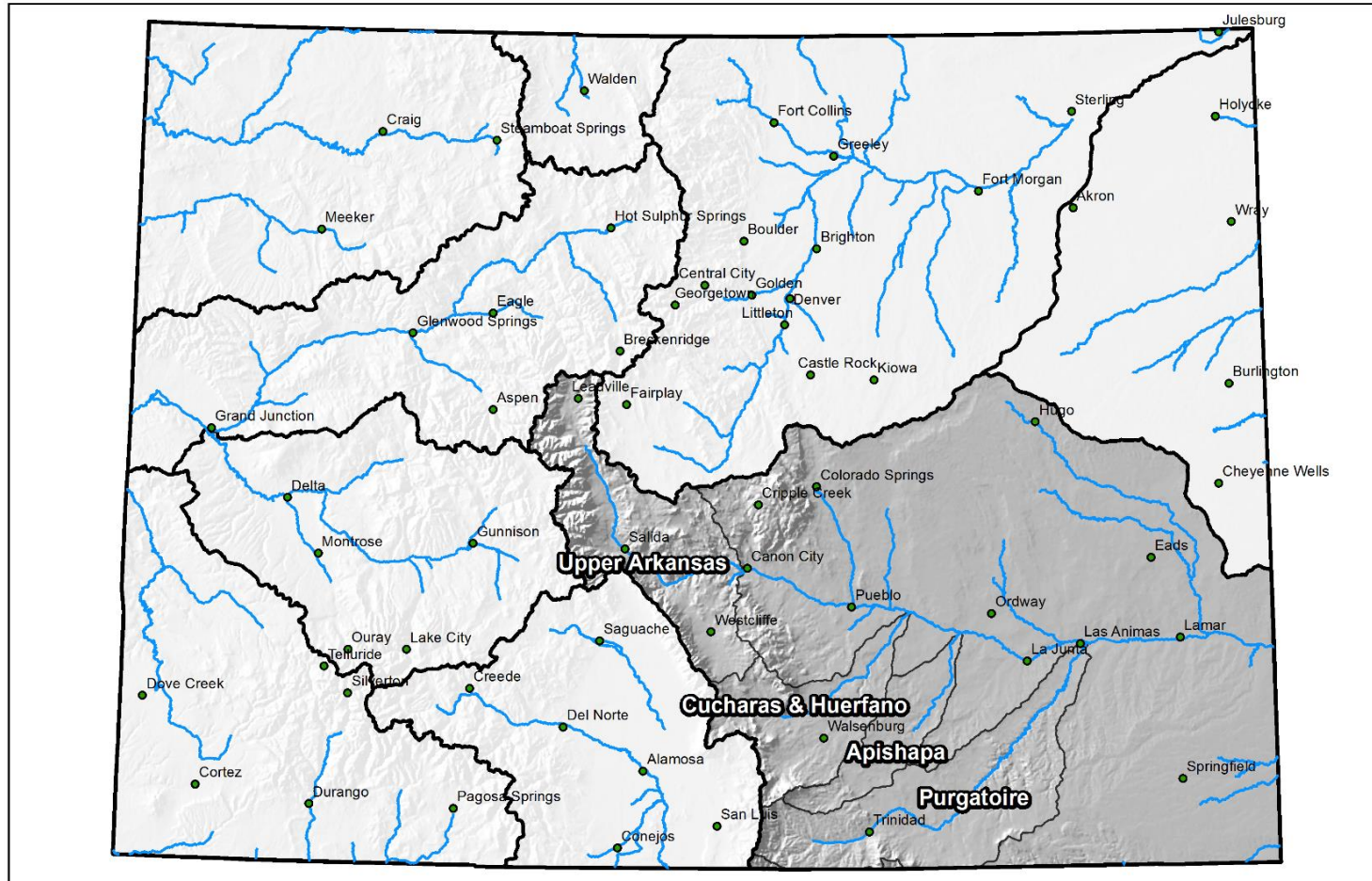
UPPER RIO GRANDE BASIN

Reservoir Storage
Departure from Average



Major Basin Summary

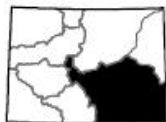
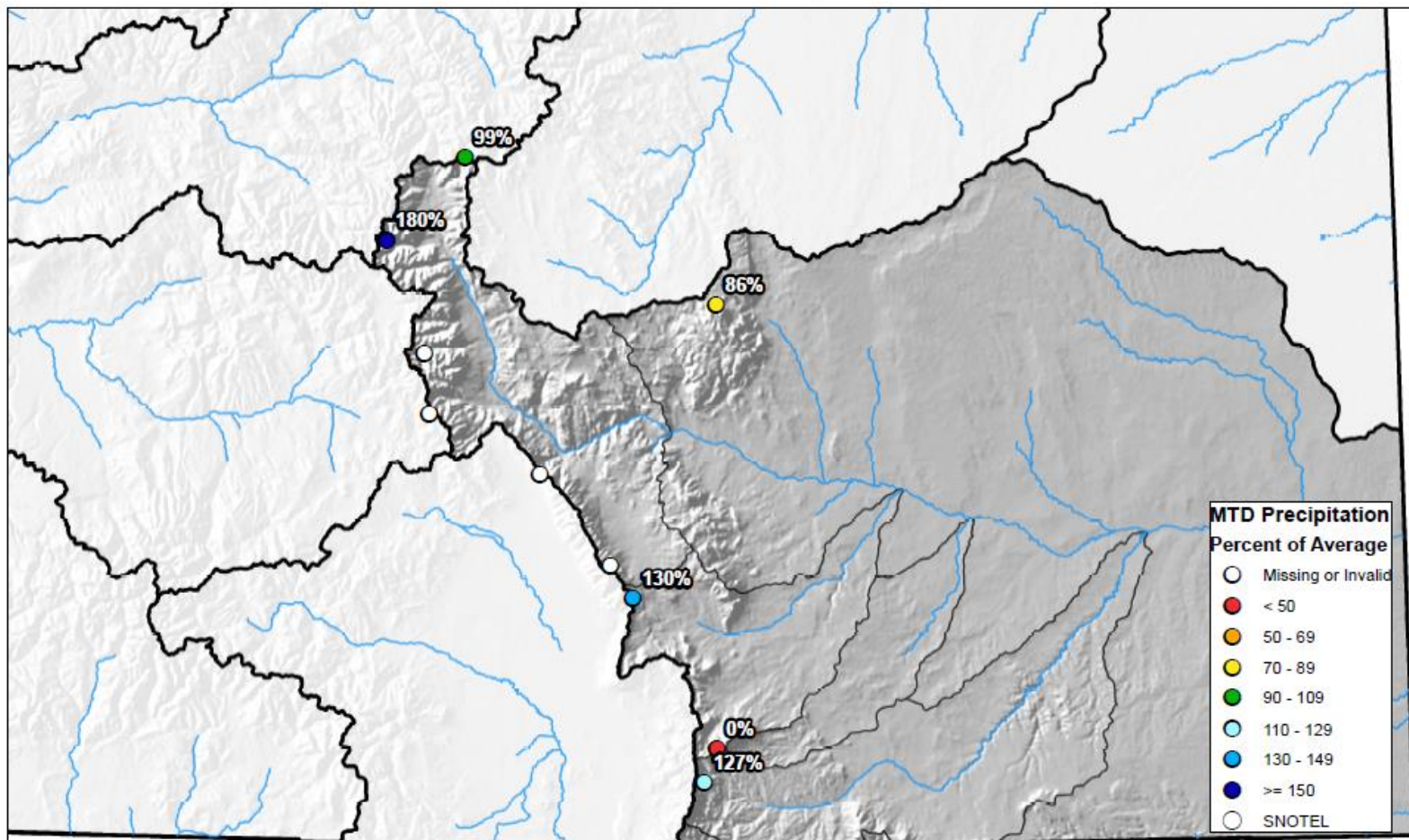
Arkansas River Basin



0 25 50 100 150 200 Miles

Arkansas River Basin Month to Date Precipitation Summary

Current as of Jul 23, 2021

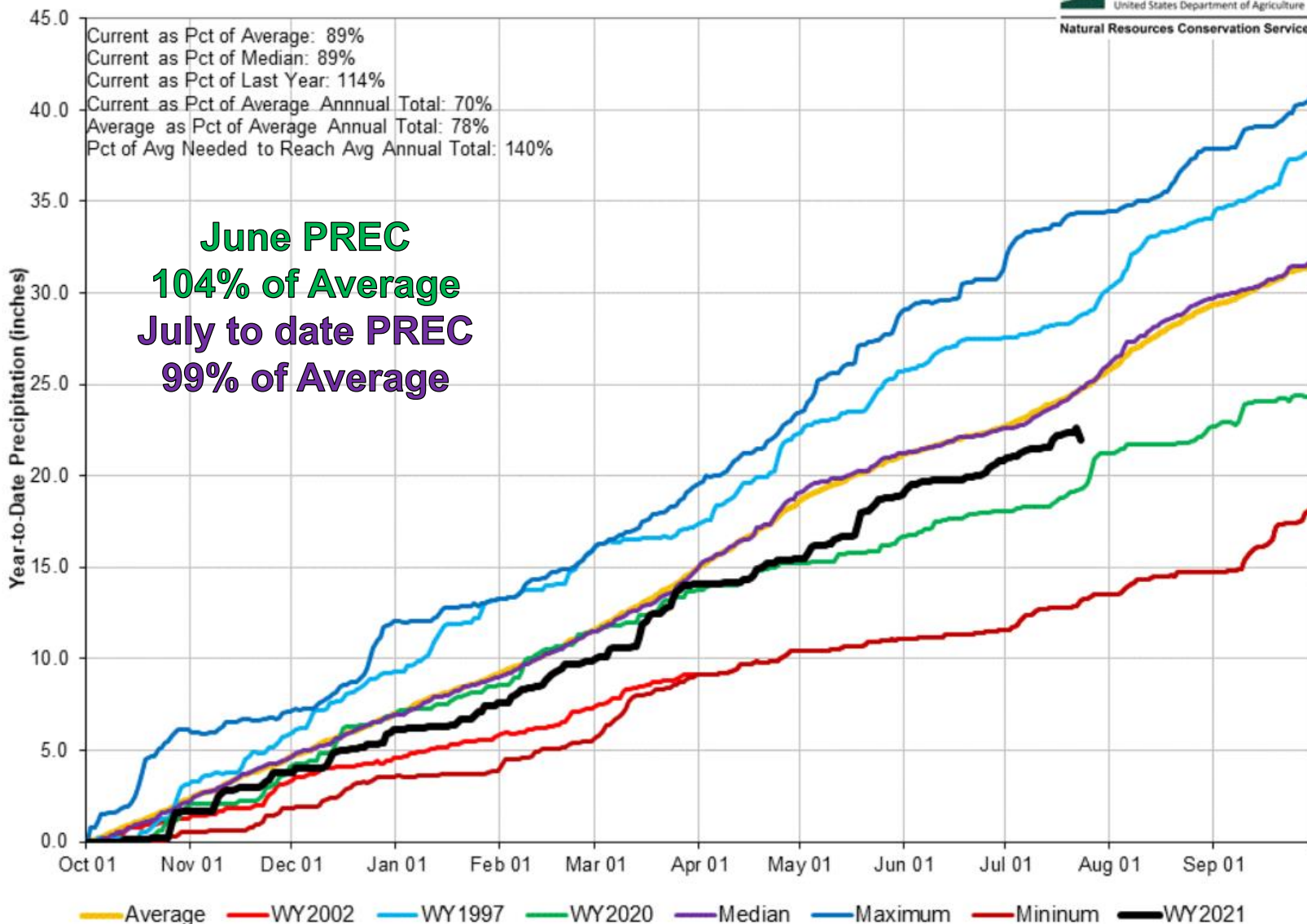


0 10 20 40 60 80 Miles

Arkansas River Basin High/Low Year-to-Date Precipitation Summary

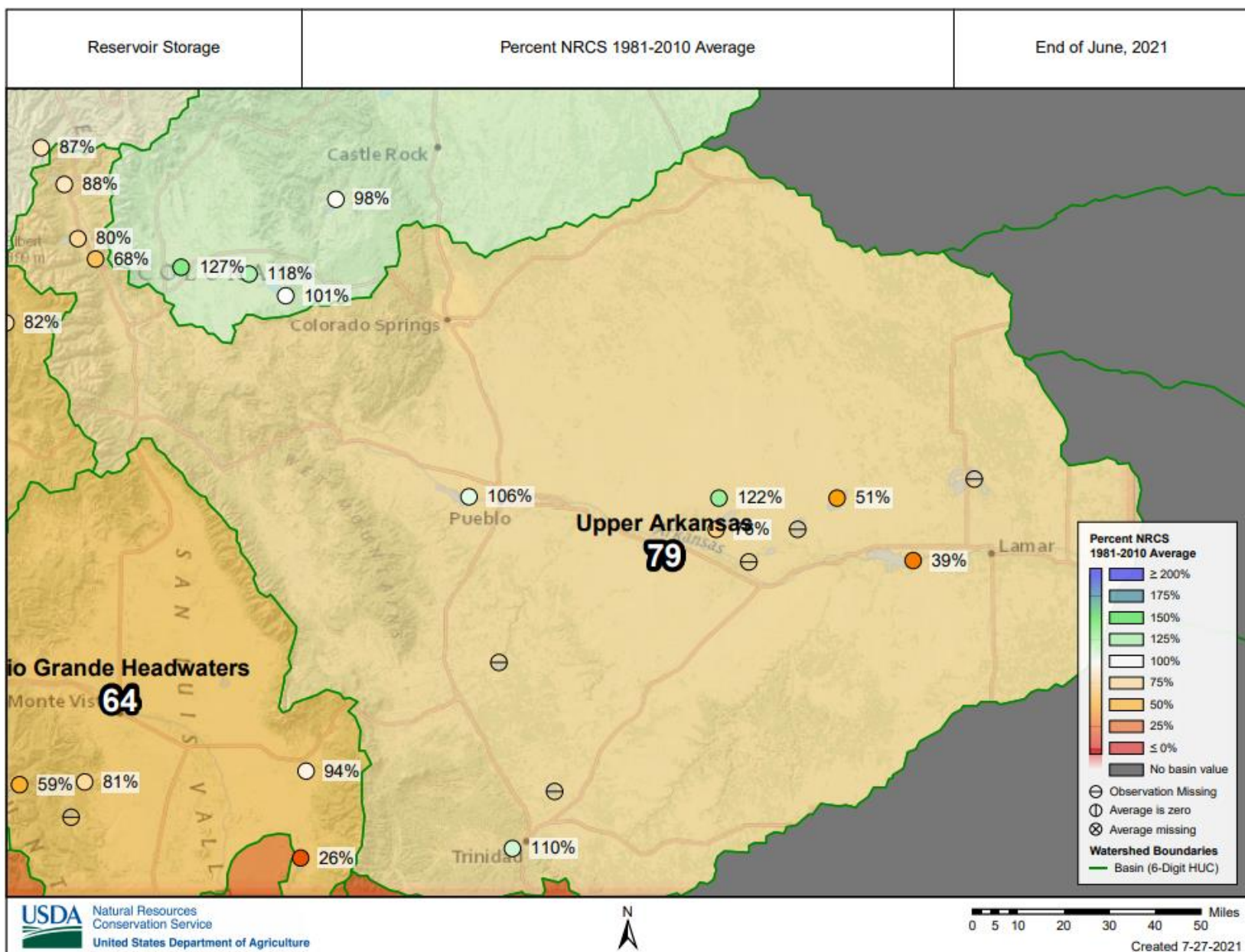
Based on Provisional SNOTEL data as of Jul 23, 2021

USDA
United States Department of Agriculture
Natural Resources Conservation Service

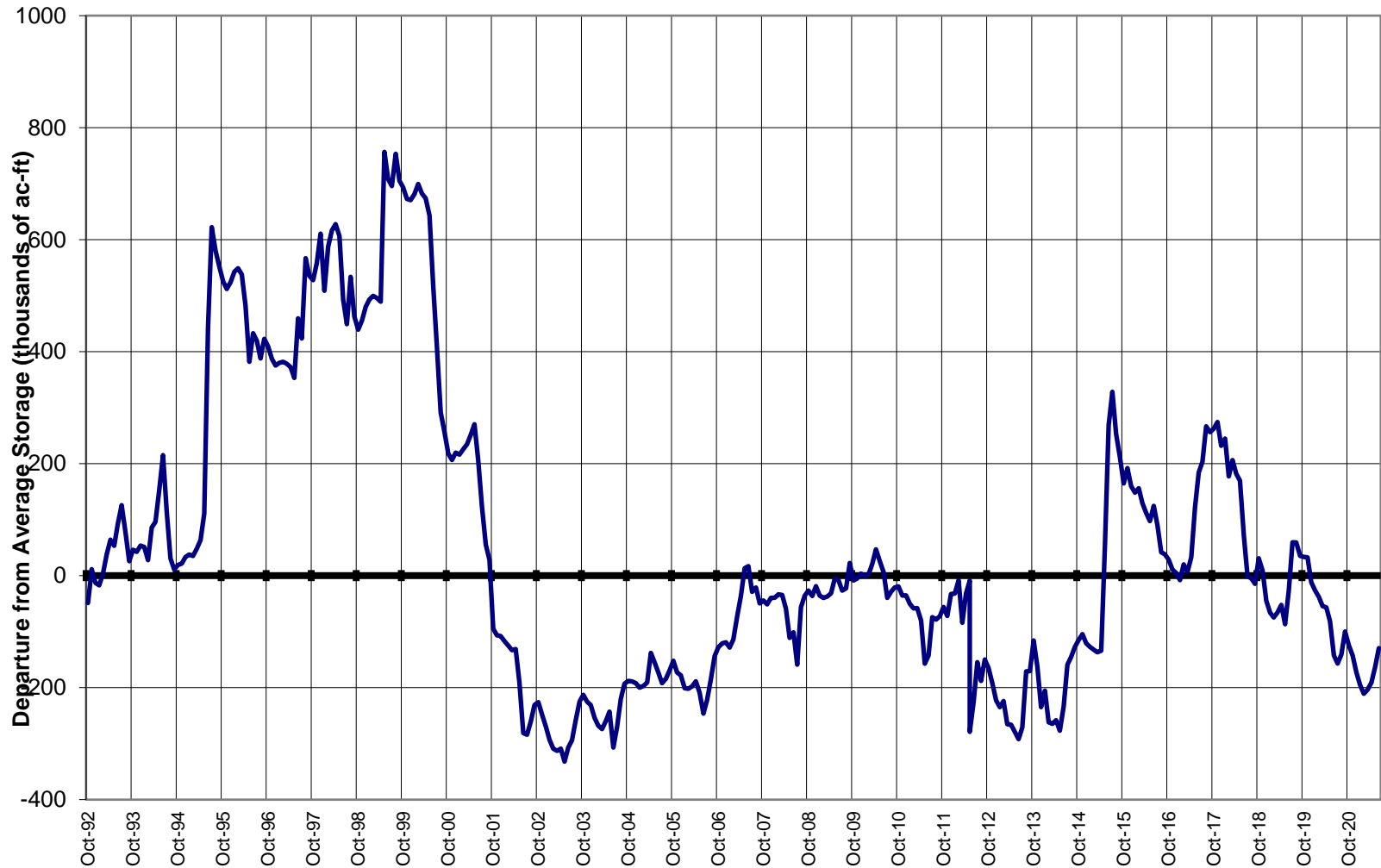




Colorado Snow Surveys

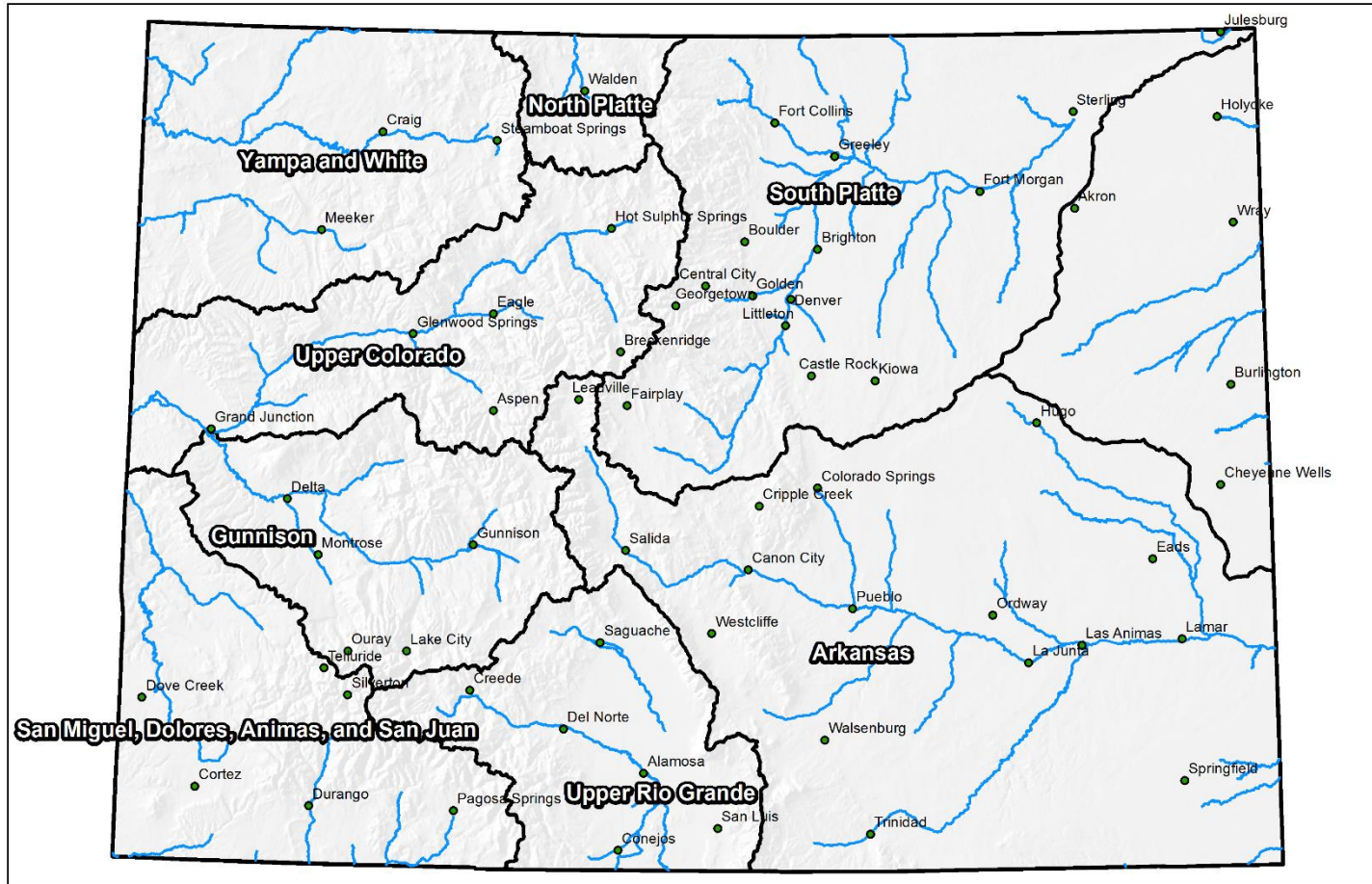


ARKANSAS RIVER BASIN Reservoir Storage Departure from Average



Colorado Statewide Summary

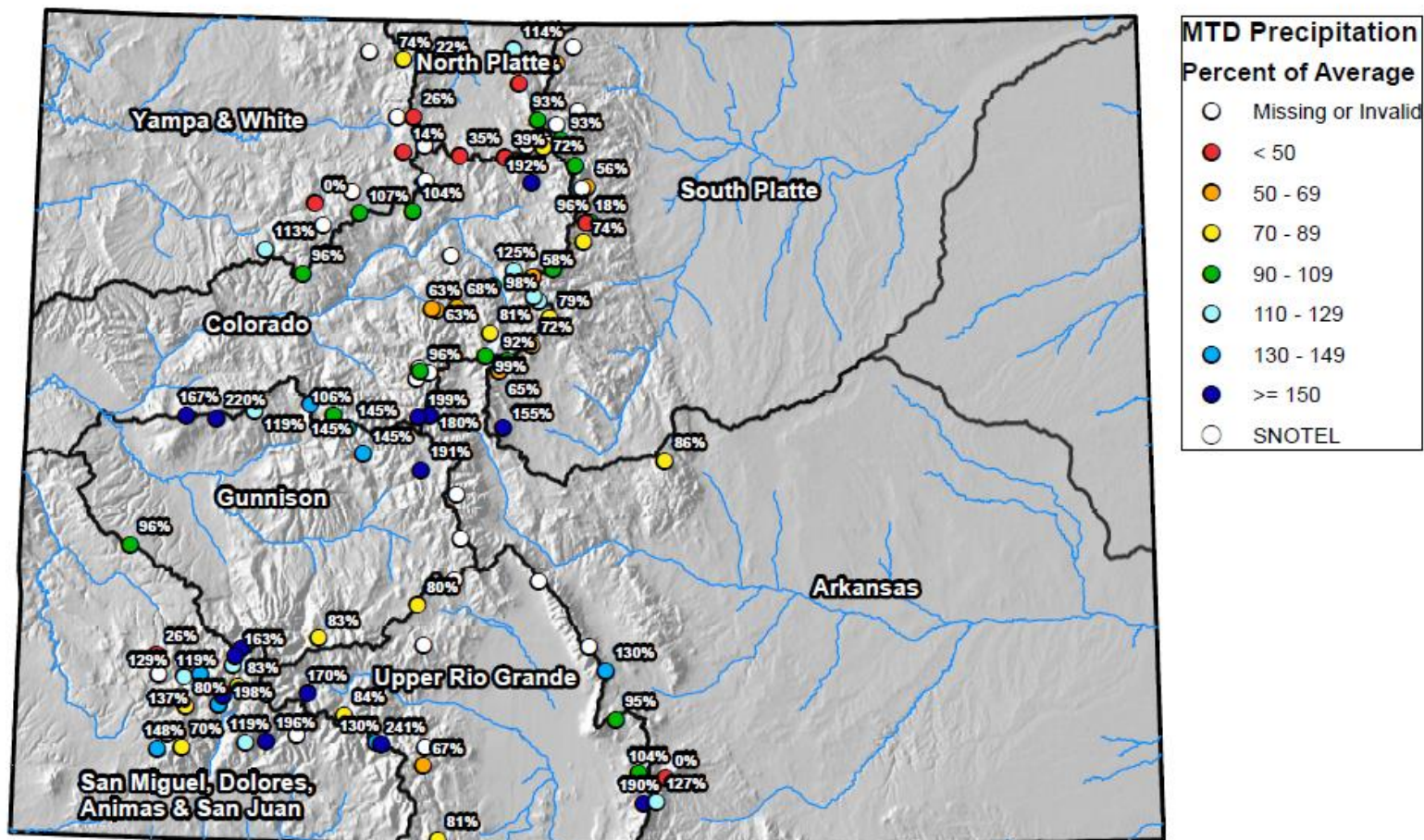
Colorado Major Basins



0 25 50 100 150 200 Miles

Colorado SNOTEL Month-to-Date Precipitation

Current as of Jul 23, 2021

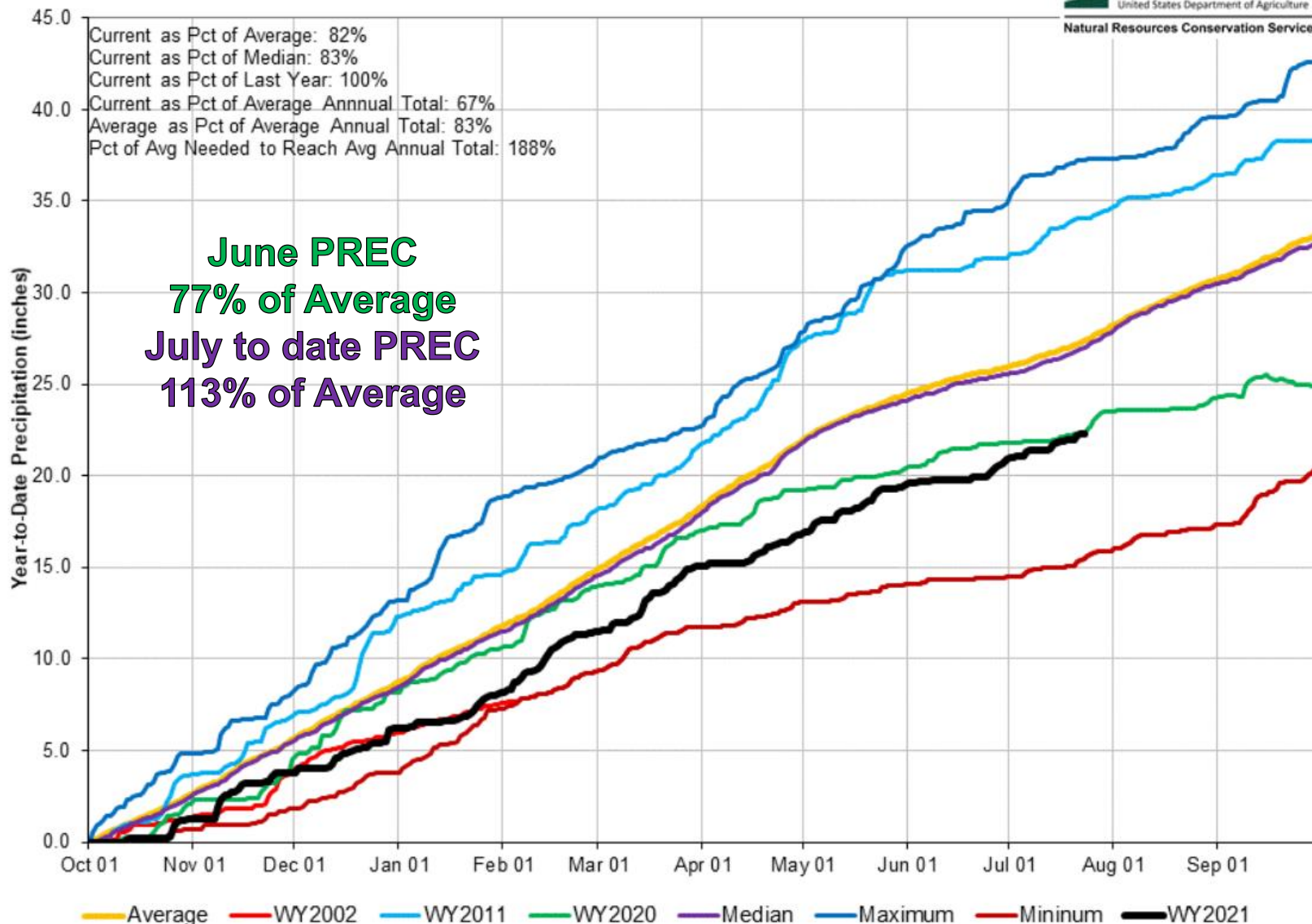


0 25 50 100 150 200 Miles

Colorado Statewide High/Low Year-to-Date Precipitation Summary

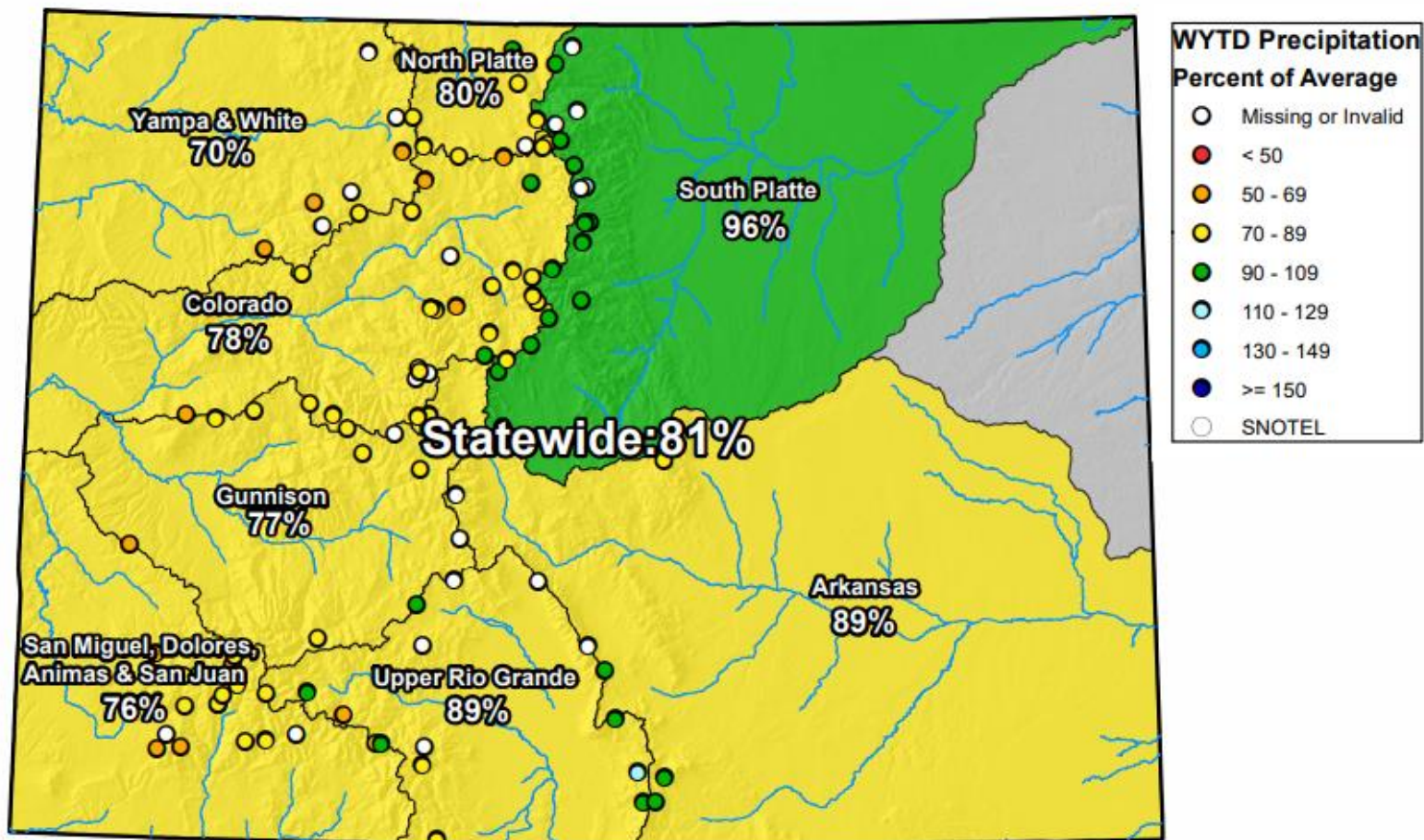
Based on Provisional SNOTEL data as of Jul 23, 2021

USDA
United States Department of Agriculture
Natural Resources Conservation Service



Colorado SNOTEL Water Year to Date Precipitation

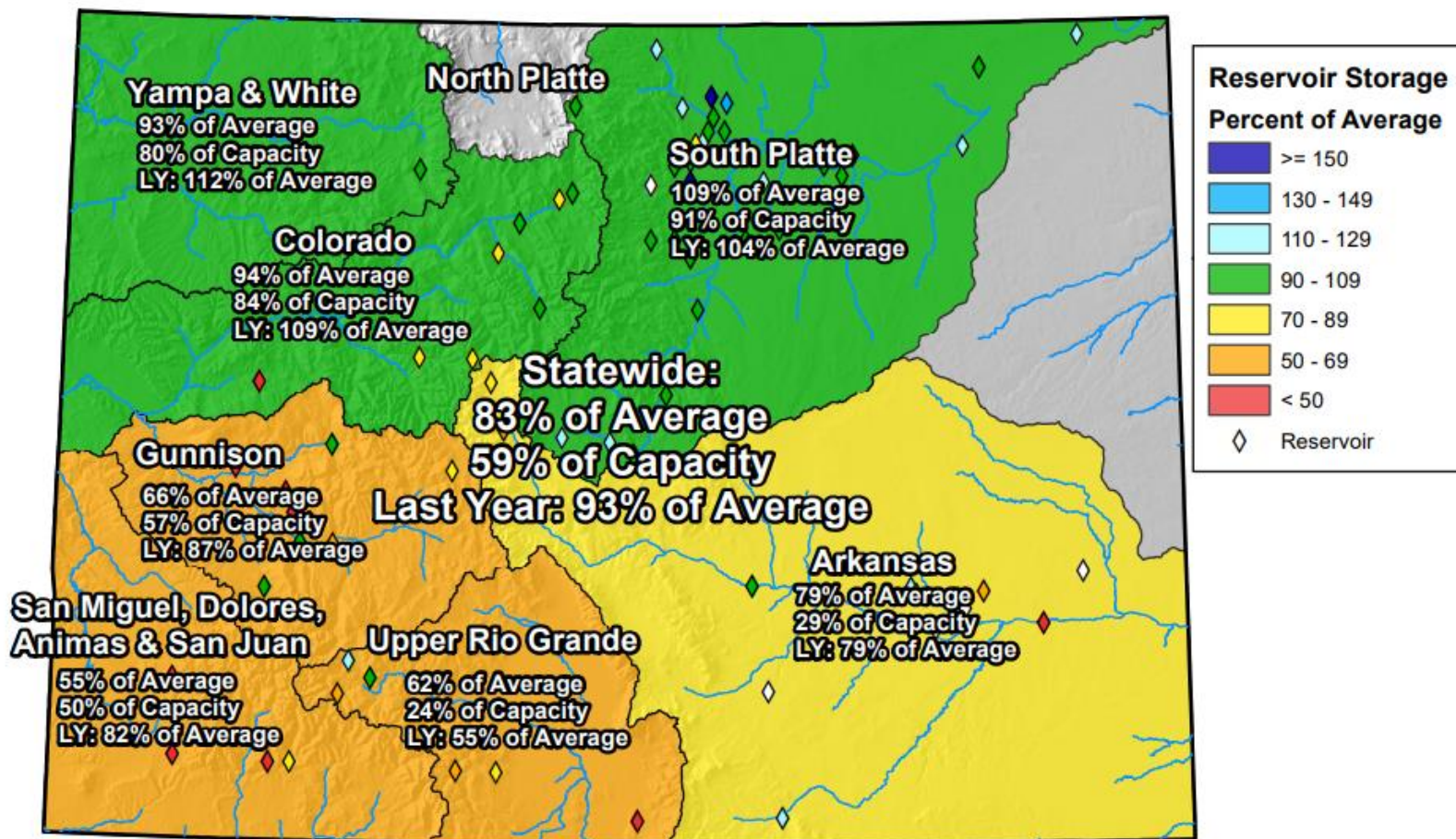
Current as of Jul 23, 2021



0 25 50 100 150 200 Miles

Colorado Monthly Reservoir Storage Summary

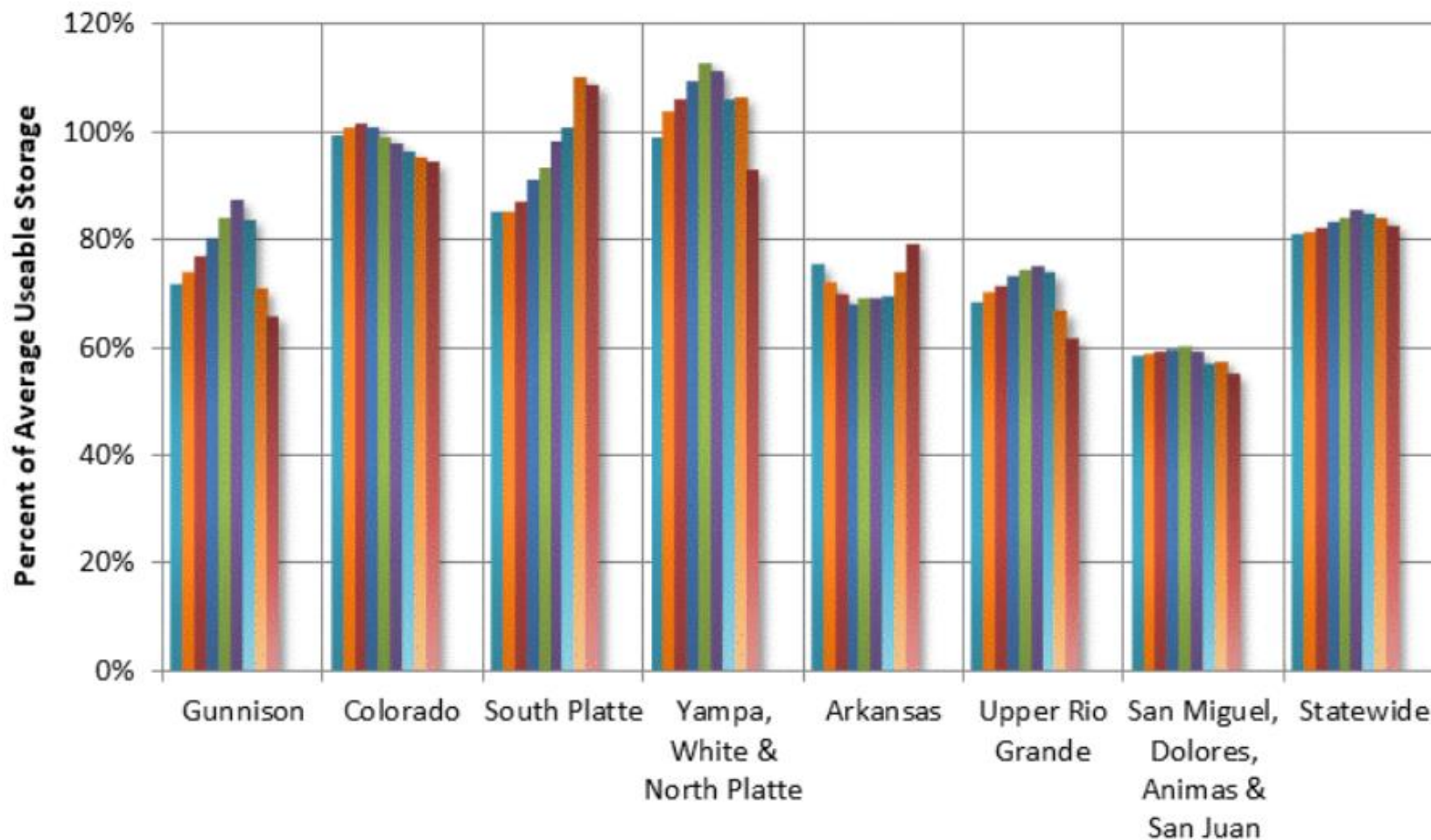
End of June 2021



0 25 50 100 150 200 Miles

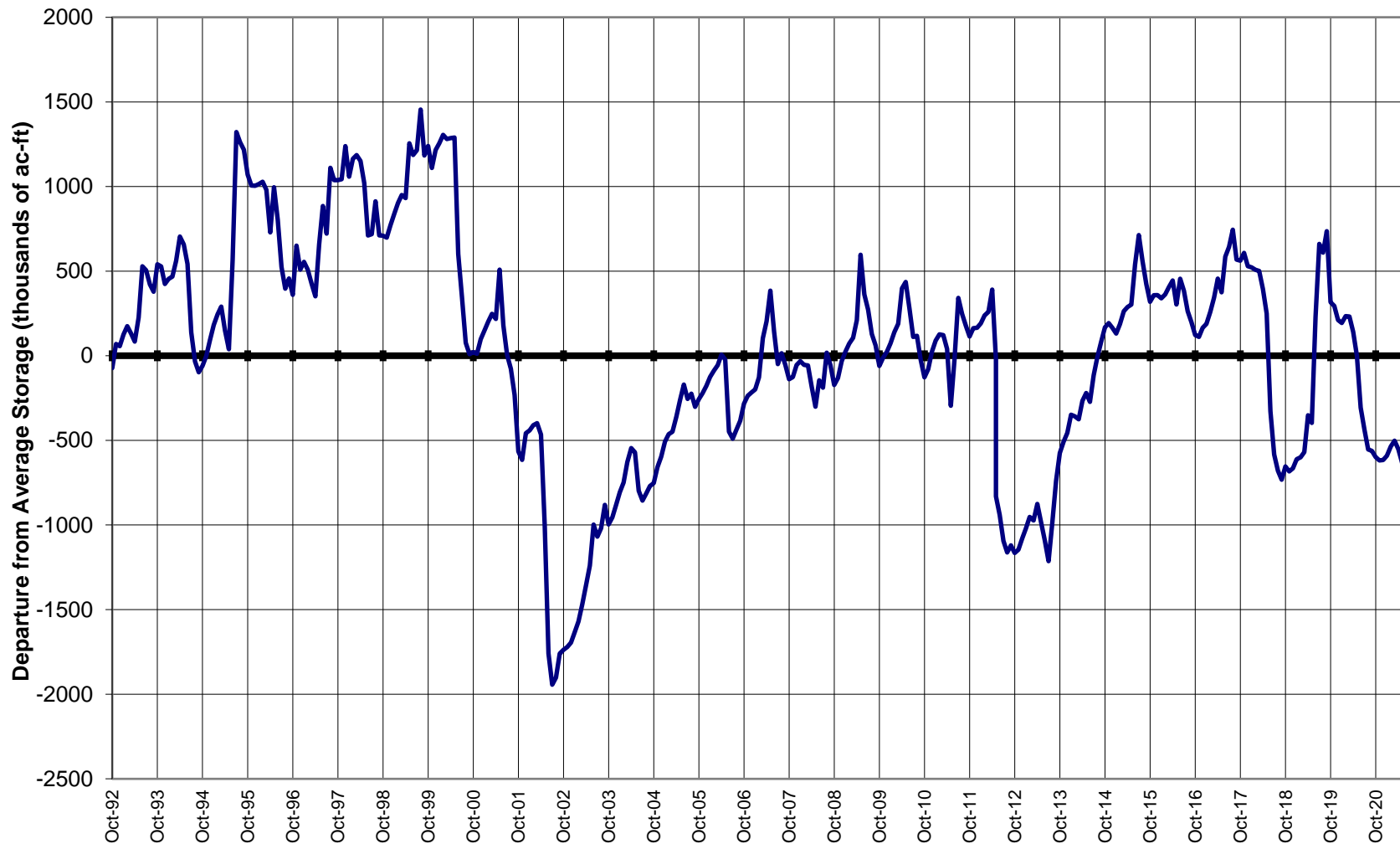
Colorado Reservoir Storage

Oct-20 Nov-20 Dec-20 Jan-21 Feb-21 Mar-21
 Apr-21 May-21 Jun-21 Jul-21 Aug-21 Sep-21





COLORADO STATEWIDE Reservoir Storage Departure from Average





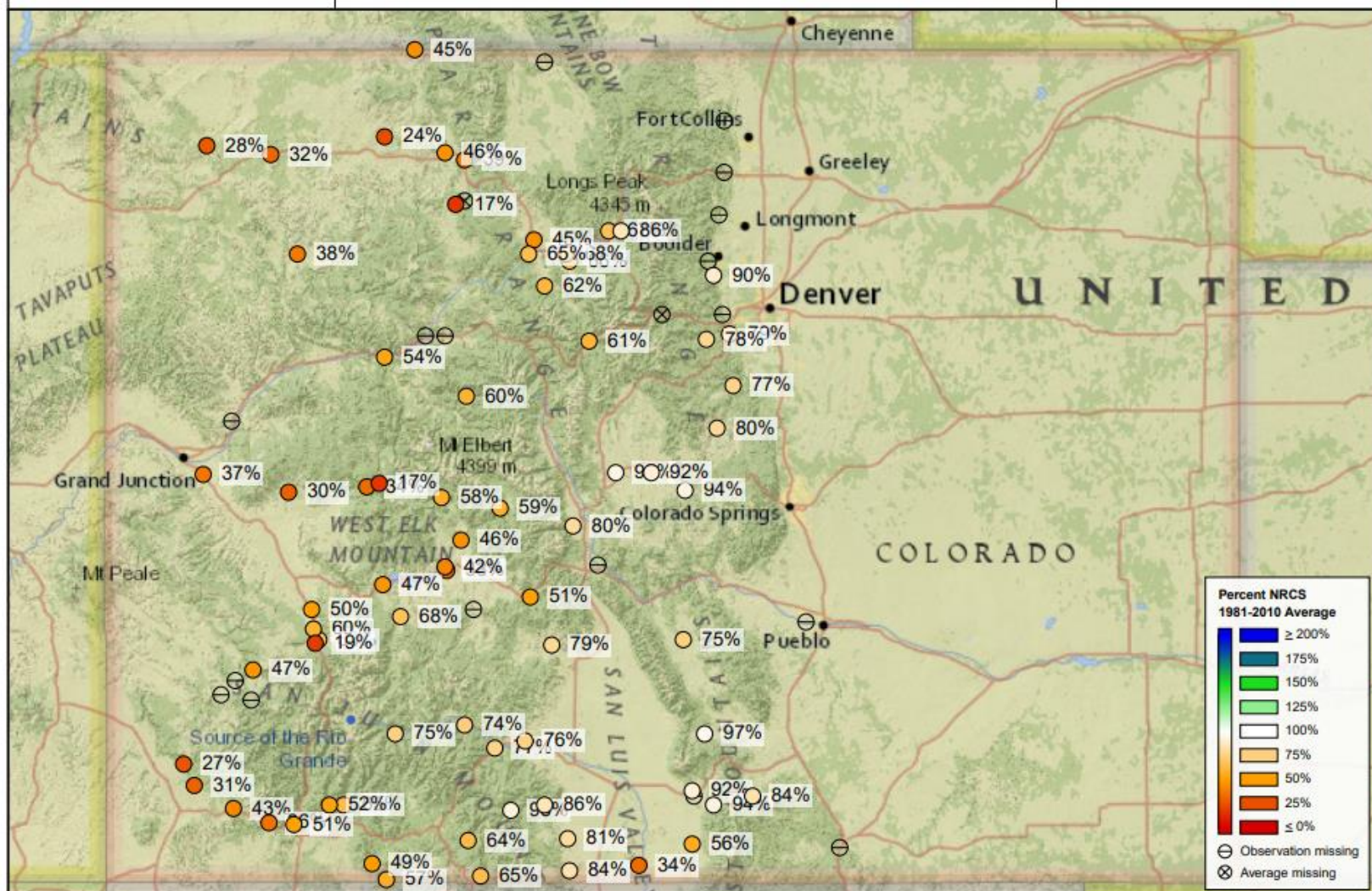
United States Department of Agriculture

Colorado Snow Surveys

3 month Adjusted Volume, Observed

Percent NRCS 1981-2010 Average

April 1, 2021 - June 30, 2021

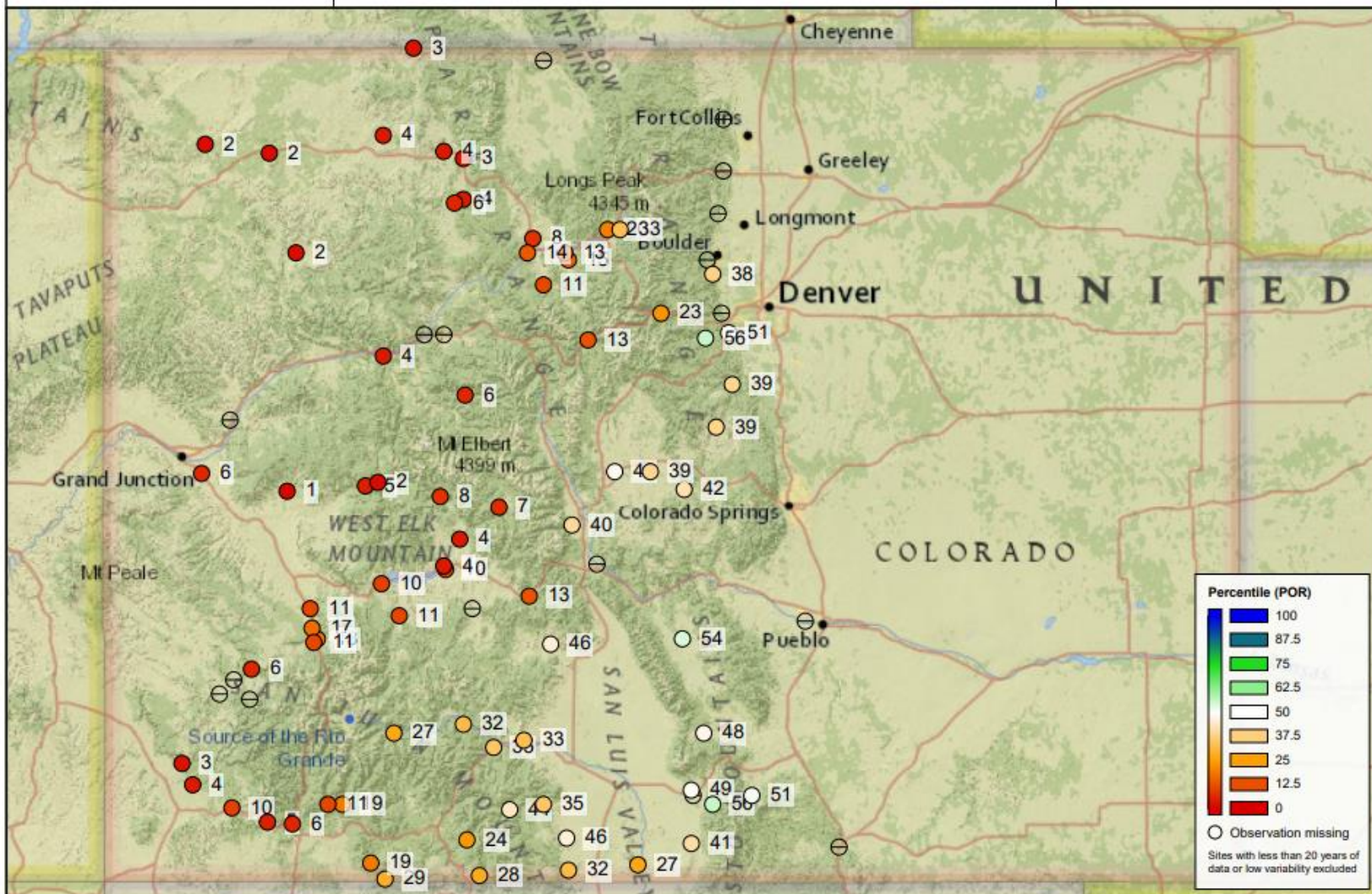


Colorado Snow Surveys

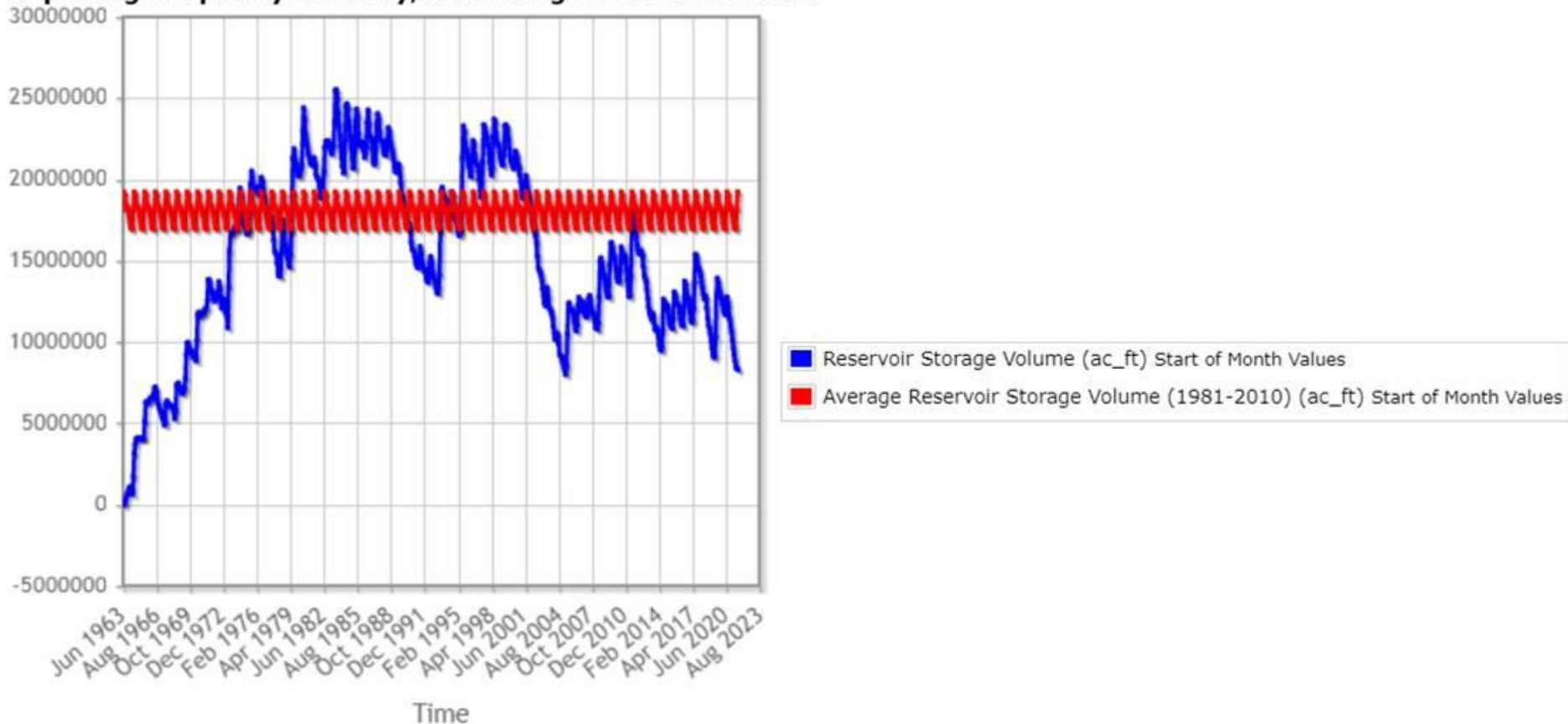
3 month Adjusted Volume, Observed

Percentile (POR)

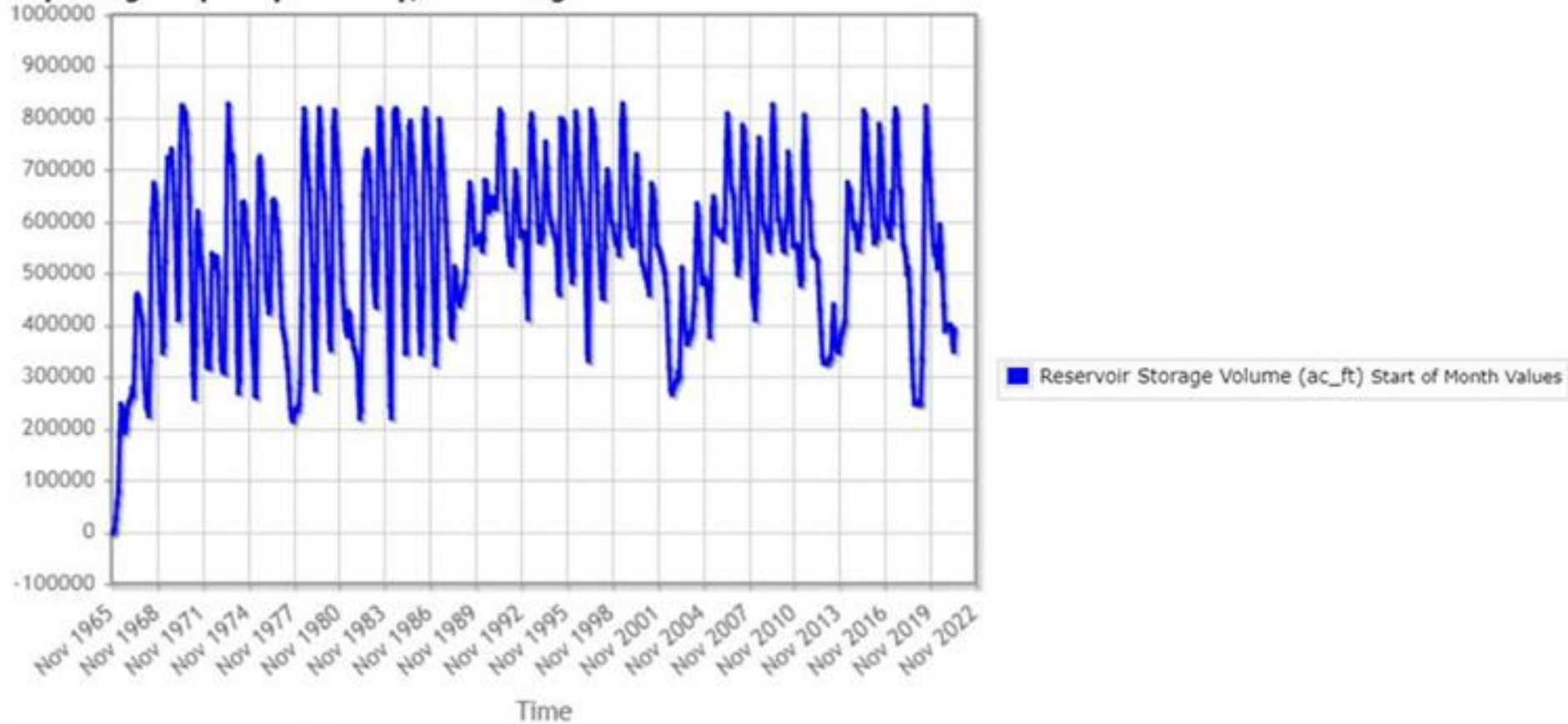
April 1, 2021 - June 30, 2021



Lake Powell (09379900) Arizona RESERVOIR Site - 3700 ft
Reporting Frequency: Monthly; Date Range: Period of Record



Blue Mesa Reservoir (09009010) Colorado RESERVOIR Site - 7550 ft
Reporting Frequency: Monthly; Date Range: Period of Record



Summary

- Precipitation increased in the last week of June improving mountain precipitation for that month
- July precipitation has largely favored southwest Colorado but has been an improvement over June across the state
- April through June streamflows have remained very low across the state but particularly on the Western Slope
 - Many rivers on the Western Slope in the bottom 5th percentile of observed flows
- Statewide reservoir storage is 83 percent of average but considerable declines were observed in the Gunnison and Upper Rio Grande basins over the last several months
- Additional releases are planned from Blue Mesa, Navajo, and Flaming Gorge Reservoirs this fall to help buffer Lake Powell's power production pool



United States Department of Agriculture

Colorado Snow Surveys

Water Availability Task Force Meeting

July 27th, 2021

NRCS Snow Survey and Water Supply Forecasting Program

Karl Wetlaufer

Hydrologist

Asst. Snow Survey Supervisor

720-544-2852

<http://www.nrcs.usda.gov/wps/portal/nrcs/main/co/snow/>



Non-Discrimination Statement:

In accordance with Federal civil rights law and U.S. Department of agriculture (USDA) civil rights regulations and policies, the USDA, its Agencies, offices, and employees, and institutions participating in or administering USDA programs are prohibited from discriminating based on race, color, national origin, religion, sex, gender identity (including gender expression), sexual orientation, disability, age, marital status, family/parental status, income derived from a public assistance program, political beliefs, or reprisal or retaliation for prior civil rights activity, in any program or activity conducted or funded by USDA (not all bases apply to all programs). Remedies and complaint filing deadlines vary by program or incident.

Persons with disabilities who require alternative means of communication for program information (e.g., Braille, large print, audiotape, American Sign Language, etc.) should contact the responsible Agency or USDA 's TARGET Center at (202) 720-2600 (voice and TTY) or contact USDA through the Federal Relay Service at (800) 877-8339. Additionally, program information may be made available in languages other than English.

To file a program discrimination complaint, complete the USDA Program Discrimination Complaint Form, AD-3027, found online at [How to File a Program Discrimination Complaint](#) and at any USDA office or write a letter addressed to USDA and provide in the letter all of the information requested in the form. To request a copy of the complaint form, call (866) 632-9992. Submit your completed form or letter to USDA by: (1) mail: U.S. Department of Agriculture, Office of the Assistant Secretary for Civil Rights, 1400 Independence Avenue, SW, Washington, D.C. 20250-9410; (2) fax: (202) 690-7442; or (3) email: program.intake@usda.gov.