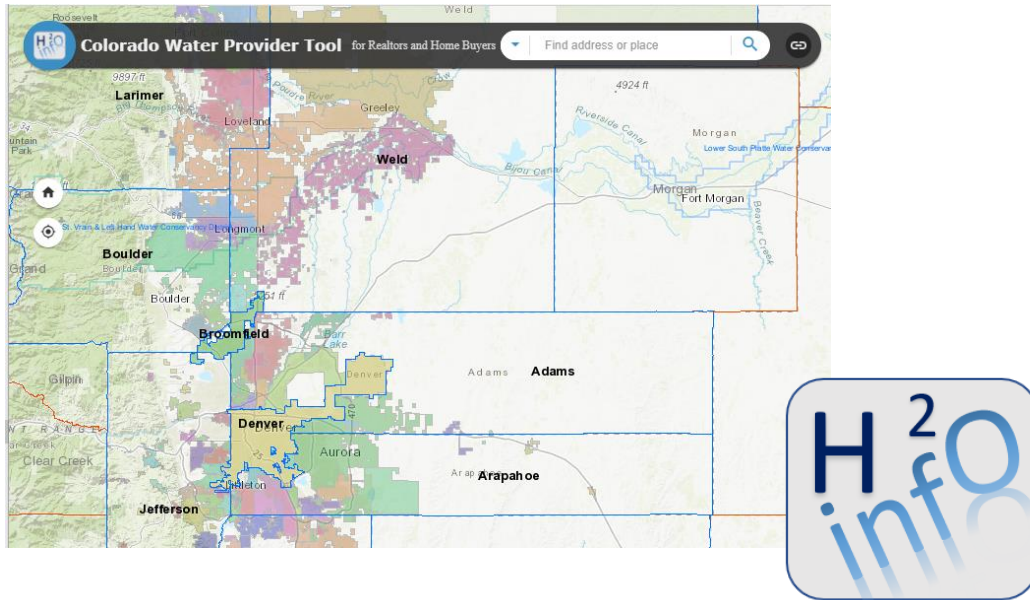


# Colorado's H2infO Water Provider Tool

## Phase 2



---

CWCB GRANT FINAL REPORT

---

Prepared for:



Prepared by:

Peak Spatial Enterprises, Inc  
Chambers Econ & Analytics



Chambers Econ & Analytics LLC

April 20, 2021

## Contents

Executive Summary.....	3
Summary .....	3
Acknowledgments.....	3
Project Background.....	5
Purpose .....	5
Vision.....	5
Project Tasks .....	5
Tool Implementation .....	6
Geographic Expansion – Phase 2/Task 1.....	6
Refine/Update Water Provider Attributes – Phase 2/Task 2.....	7
User Interface Modifications – Phase 2/Task 3 .....	7
Tool Components.....	8
Widgets and Tools.....	9
Tools.....	9
Search.....	9
Home Extent .....	10
Legend.....	10
Layer List .....	10
Map Gallery.....	10
About.....	10
Help .....	11
Attribute Table .....	11
Water Provider Database.....	12
Output.....	14
Final Thoughts.....	14
Outreach .....	14
Tool Expansion .....	14
Tool Analytics .....	15
Conclusions .....	16

## Executive Summary

### Summary

The H2info Water Provider Information Tool Phase 2 project expanded the initial pilot tool from seven test counties along the southern Front Range by adding the remaining water providers in the Metro Basin roundtable counties of Elbert, Jefferson, and Broomfield and the South Platte roundtable counties of Boulder, Larimer and Weld. The Phase 2 project also included significant improvements to the user interface and mobile accessibility based on input received during the initial pilot program.

The Phase 2 tool, with additional data and improved user interface, is currently deployed to the <https://h2info-co.com> url and is being introduced to the added counties or re-introduced to users in the original pilot counties.

	Counties	# of Providers
<b>Pilot Project – 2019/2020</b>	Pueblo, Teller, El Paso, Douglas, Arapahoe, Denver, Adams	271
<b>Phase 2 - 2021</b>	Elbert, Jefferson, Broomfield, Boulder, Larimer, Weld	101*
<b>Total</b>	13 Counties	372*

\*Additional municipalities still being added as data service areas evolve

This expansion effectively doubles the potential home buyer interactions, based on population, with 120,000 annual transactions along these Front Range counties. The real estate community is incentivized to use the tool to inform and serve all types of clients. Water suppliers benefit from consumer understanding of supplier details. Home buyer participation in water understanding and engagement provides a foundational component needed to meet the CWP stretch goals.

The tool remains a free, online, public data aggregation and disclosure tool linking water supplier information with property buyers and realtors to increase buyer awareness of address specific conservation plans, water planning, and municipal water suppliers local objectives. The public’s use of the tool directly supports the conservation ethic recognizing the need to work within our arid environment, increases specific understanding of conservation practices, and reduces wasteful behavior. The target audience for the tool’s data are the homebuyers that make up the growing population and demographic trends described in the Colorado Water Plan.

Phase 2 activities began on July 30, 2020 and the improved tool deployed to the website in March 2021 after receipt of Colorado Water Plan grant approval in May 2020

### Acknowledgments

Peak Spatial wishes to thank and acknowledge the support received from the following individuals through this project. Their willingness to try new and innovative approaches to improving public, consumer water knowledge led the start of this project and it’s continuation for the foreseeable future.

These influencers and all those users and water providers who have contributed their ideas and corrections have been critical to the success and future of this public outreach tool.

- Kevin Reidy, CWCB program lead
- Donnie Dustin, Fort Collins Water
- Sean Chambers, Greeley Water
- Barbara Koelzer, Regional Government Affairs Director for Realtor Associations in Larimer, Weld, Boulder and Broomfield Counties
- Mark Bishop, Affinity Realtors Fort Collins
- Kim Soullier, City of Golden GIS
- Sean Cronin, Saint Vrain and Left Hand Water Conservancy District

## Project Background

### Purpose

The purpose and overall objective of the H2info Water Provider Tool Program, both in the original Pilot area and in this Phase 2 grant implementation, is to build and operate a “public facing” site that connects Coloradans with their water providers when they are making home buying decisions. The rationale for the tool is based on the complex water provider boundaries, characteristics, and capabilities that range widely from provider to provider and that typically don’t correspond with county or city boundaries.

The tool also supports water providers who often, at the billing and administrative level, need to help their customers and the general public to understand who provides them with water service. It also supports realtors who are providing necessary information to a home buyer prior to a sale. Once a home buyer makes a choice they are effectively choosing a water provider.

The program supports the conservation, public education and outreach planks of the Colorado Water Plan (CWP) and reaches beyond the Colorado water community to the citizens of the Colorado. With the population of Colorado projected to grow by an additional 2.5 - 5 million people, over the time period of the CWP, this particular tool targets that future, largely municipal demand, on the limited water supplies within the State.

### Vision

The long term vision remains to expand the tool to other areas in the State and to provide a consistent resource that realtors, home buyers, and water providers can rely on to identify the basic characteristics of water providers servicing particular properties.

Placing water information in the hands of home buyers prior to making a home purchase decision develops a more water savvy population, highlights water provider data specific to potential home properties and reduces the potential for customer confusion relative to their water providers.

### Project Tasks

Tasks for the Phase 2 effort are listed below and have been or are being, implemented during the grant effort. CWCB funding supports the initial three tasks only and Tasks 4 through 6 are contributed as grantee funded and executed tasks. The tasks that make up the grant effort are:

- Task 1 – Geographic Expansion
- Task 2 – Refine/Update Water Provider Attributes
- Task 3 – User Interface Modifications
- Task 4 – Track Metrics
- Task 5 – Extend Outreach and Advertising
- Task 6 – Operations and Maintenance

The first three tasks are completed and will continue to be updated even after that phase of the work is completed. Updates to the tools baseline information will continue due to the transitory nature of the public data controlled primarily by water providers through their public presence and the annual updates for rates/fees and other plans that change during the life of the water districts/providers operations. Tasks 4-6 are now in progress and also continue to take place after the grant funded

activities are complete. The Water Provider Tool operations will continue with updates as input or corrections to water provider dictate during the remainder of the 2021 calendar year.

## Tool Implementation

### Geographic Expansion – Phase 2/Task 1

The Phase 2 expansion of the pilot program added Elbert, Jefferson, Broomfield, Boulder, Larimer and Weld County water providers to the tool. These additions now accommodate the majority of the complex water service area jurisdictional challenges within the state of Colorado. They were specifically added to the tool to support the urban corridor realtors and home buyers that make up the bulk of residential home sales in the State serviced by a water provider. In particular, the addition of the counties around the Denver metropolitan area provide comprehensive coverage (and the Metro Basin round table) of that urban area. Growing the tool to accommodate northern Front Range counties expands the utility of the tool to those rapidly growing areas such as Longmont, Loveland, Windsor, Greeley and Fort Collins. These counties added over 100 additional providers to the tool, a greater than 25% increase in the total providers. With the addition of these counties the tool includes 372 current providers.

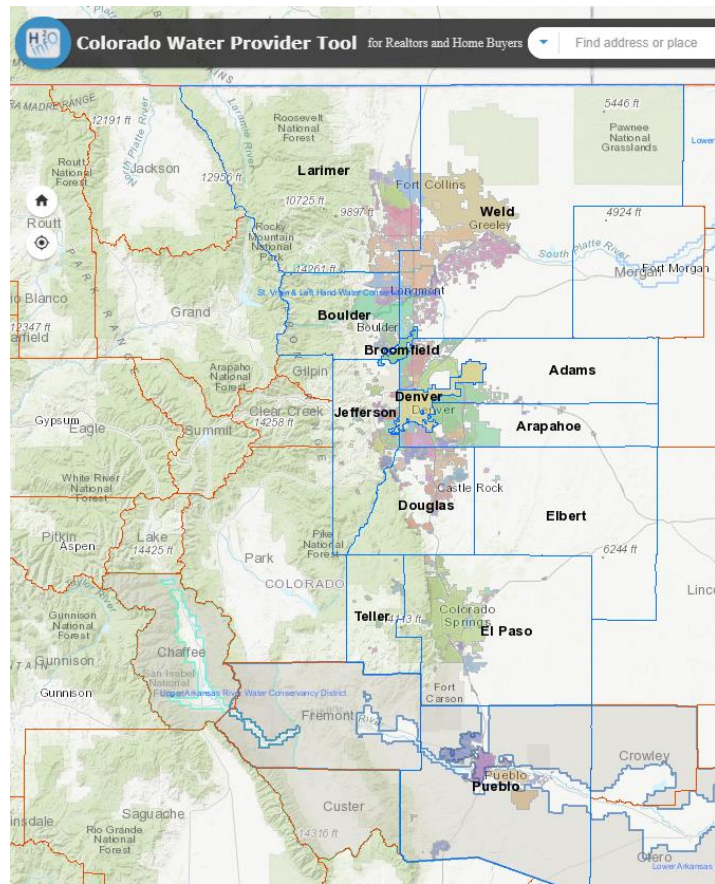


Figure 2- Phase 2 Counties (blue bordered)

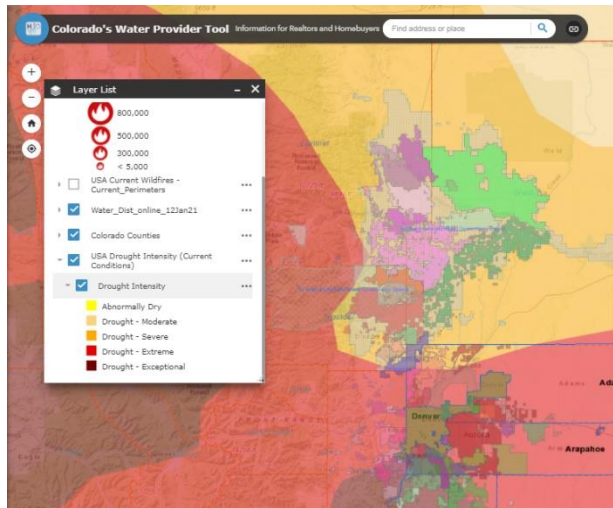
The thematic nature of the new water providers is slightly different from the original pilot program data set. While the primary challenge of water service areas not aligning with government jurisdictions remains the same, the northern Front Range providers include large, geographically extended service areas that provide water to municipalities within their boundaries. The municipalities, in most cases, are the point of contact for home owners relative to water utility business, though the source of water comes from the larger water provider. These differences resulted in water provider database attributes being a combination of municipality business contact and water provider water quality information.

Each of the water providers in the tool, whether a municipal utilities, water or metropolitan districts, are required to have a public water system identification (PWSID) number. Some of the larger water districts that serviced more than 2000 acre feet of water were also identified as HB-1051 providers. These providers are required, by that numbered state legislation, to report additional information to the

State water conservation board. A listing of the water providers included in the tool is provided in Appendix A of this document.

### Refine/Update Water Provider Attributes – Phase 2/Task 2

In addition to collecting all the water provider attributes for the new water providers Task 2 examined the baseline data collected for the pilot project water providers and looked at the possible additions of other related water data that might be helpful for realtors and home buyers. This work included looking at adding available drought data sets for the region, active wildfire events and perimeters within the region, and other water layers. In particular the team also looked at, and now includes in the tool, water conservation districts within the region.



The fire data sets remain in the new Phase 2 tool. The drought data is a “by subscription” type data set that requires special permissions that ended up being outside the bounds of the tool objective of being publicly accessible. That may change over time and the data set is a solid informational layer for interested homeowners.

### User Interface Modifications – Phase 2/Task 3

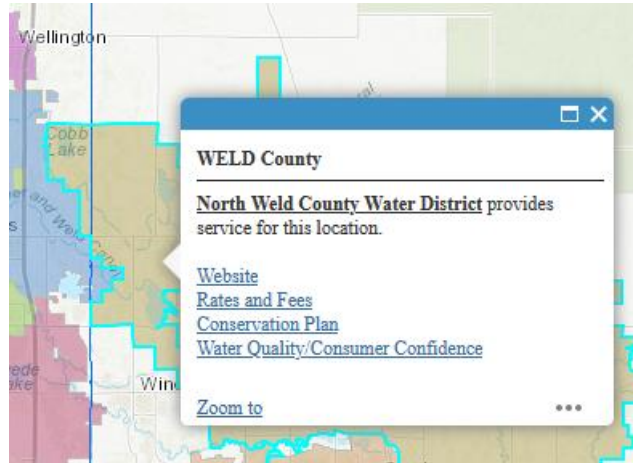
Task 3 of the grant work focused on the tool interface and built on experiences gained in the initial Pilot and comments and input from water providers and users. The Pilot implementation focused on a simple web interface and, while some effort went into making the sight more responsive for mobile/smart phone users, that effort didn’t produce as robust a tool as users would have liked.

The team adopted a responsive site approach from the outset and implemented the tool using ESRI’s ArcGIS Web AppBuilder (WAB). By using WAB the team could take advantage of a number of useful development tools, widgets and data access capabilities that produced a simpler but more attractive interface. This approach also provides flexibility to rapidly change map contents and functionality while offering a range of deployment options from in house servers to cloud implementations.

The tool remains a free web accessible map based interface to the water provider information contained in a curated database that now includes the thirteen of the States most populated/urban county’s water providers and the water provider’s attributes.



All of the baseline functions of the tool were carried forward into the Phase 2 product with more attractive and simpler accessibility. Searches in the tool continue to support specific home addresses and searches for water provider names for those users who are interested in getting to a specific water provider service area rather than a home address was also added. Searches continue to support device location, address data entry, the previously mentioned water provider name search, and simple map/point and click options that can be used to focus in on particular homes/properties and initiate a water provider query. An address query in the Phase 2 system now returns the basic four hyperlinked data elements (Water Provider website, rates/fees, conservation plan, and water quality/consumer confidence) for a water provider in one simple query.



## Tool Components

### User Interface

The team designed the Water Provider Tool interface around a map interface that includes embedded widgets for zooming, address/water provider searching, basemap toggling (between imagery and map data and “point and click” querying of the map/districts. Removing the “Locate Residence” and “Get Report” buttons from the pilot interface was the main modification to simplify the retrieval of water

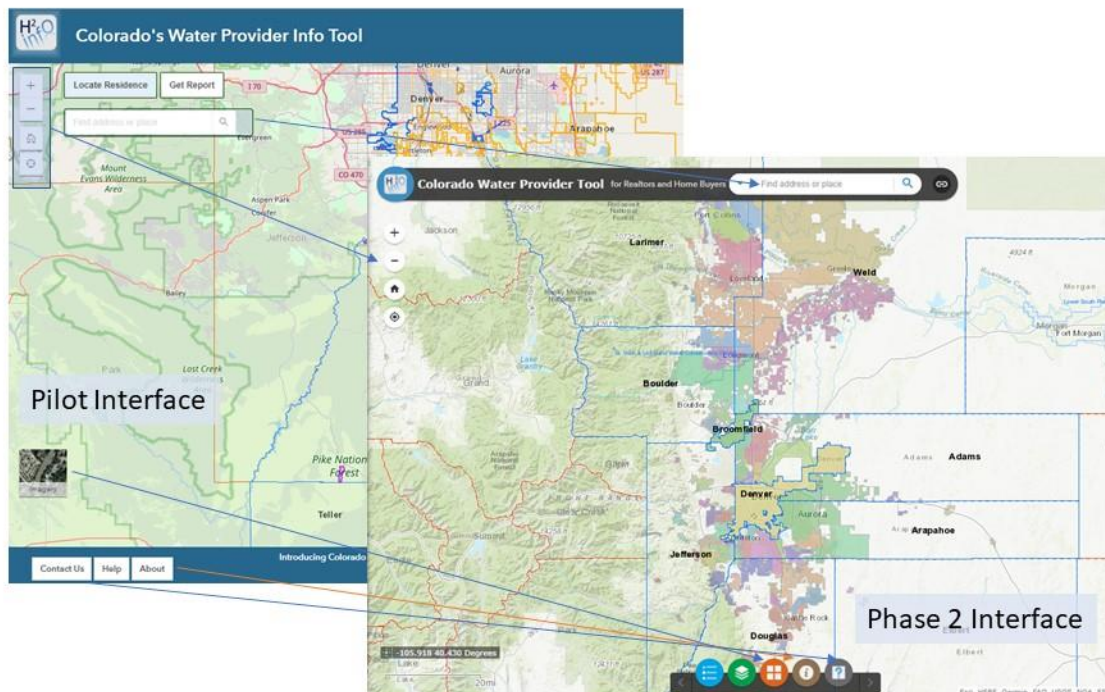


Figure 3 - Pilot to Phase 2 Interface Mods



provider information. Customizing the map info point-and-click retrieval to return the basic report in one step answers complaints and input received during the pilot to make the system simpler. Figure 3 shows the Pilot interface and the new Phase 2 interface. One of the primary values of the user interface modifications was the simplification of the display and user choices and visibility of water district service areas as can be seen in the figure above.

The team eliminated the header and footer banners in the Phase 2 interface as well as the query buttons allowing for a more responsive/smart phone friendly interface. A preview of the newer interface in a notional Samsung 8 type display is shown in Figure 4.

### Widgets and Tools

The Phase 2 user interface moved Pilot program footer elements of Help, Contact, and About to accessible widget icons. The Help instructions were modified to accommodate the changes made to the basic user interface and the previous Contact verbiage is now included in the About paragraphs. These activities were all done to simplify the interface.

A sponsor/supporter splash page opens up showing the tool’s supporting agencies prior to a user getting to the tool itself. The splash page also includes a data disclaimer that describes the purpose of the tool, the source of data and cautions against inappropriate use or inferences made based on the tool’s information.

### Tools

User tools are located in the upper right corner of the map and include standard zoom buttons, a home button, a device button, a “Locate Residence” and “Get Report” button, and an address search entry window.

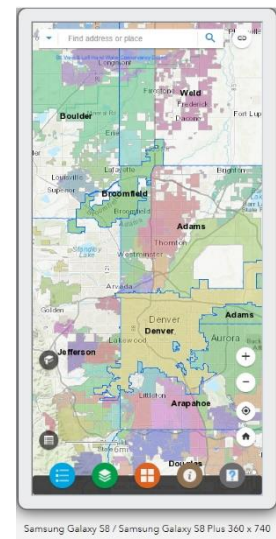
### Search

#### *Address and Water Provider*

The tool uses ESRI’s ArcGIS World Geocoding Service to refine a user’s location based on free text searching for the address. While a user is typing in the address or water provider name in the search window, the service begins to refine the search and presents address and water provider options for the user to select. This service is similar to the Google address search often found on web site implementations.

#### *Device/User Location*

The device search is the target icon on the map that turns on “use of device location” so that that map will zoom to the location of the smart phone, tablet or wifi service connecting a desktop system to the web. This feature will be particularly useful to users who are mobile, like realtors and home buyers, so that they can dynamically query the tool while looking at homes.



*Figure 4 - Notional Samsung Phone Display*

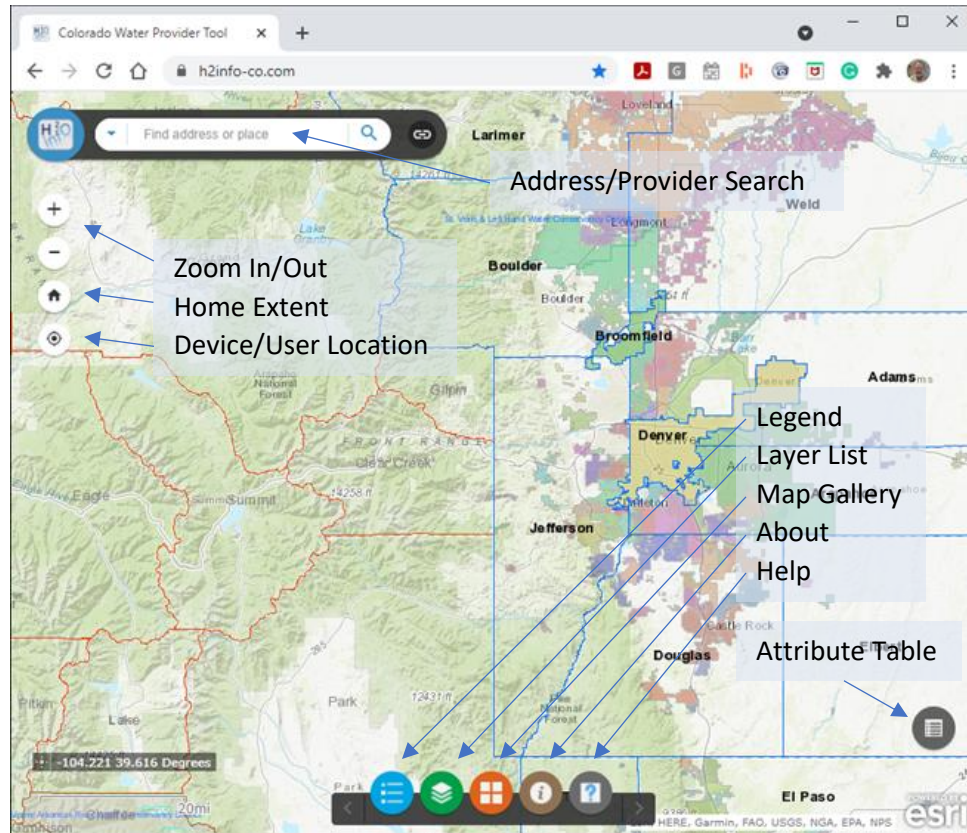


Figure 5- Tools/Widgets

### Home Extent

The home button on the map simply returns the tool to its default extent, map center, and zoom level so that a user can back out of detailed searches and start from a fresh page. The Phase 2 system operates as the Pilot system with the home center at a point further north in the Front Range to accommodate the geographic expansion of the tool.

### Legend

The legend simply displays the icons and colors associated with the map graphics in the display

### Layer List

The layer list shows all the layers in the map and allows a user to turn on/off layers of particular interest to them.

### Map Gallery

The map gallery offers the user the ability to change the background map display from Open Street Map, Terrain w/Labels, Topographic, or Imagery w/Labels. The default site is set to the Open Street Map display.

### About

The About tool/widget provides basic information about the tool and also provides a “contact us” link so that users and water providers can connect with the team to report changes or recommendations.

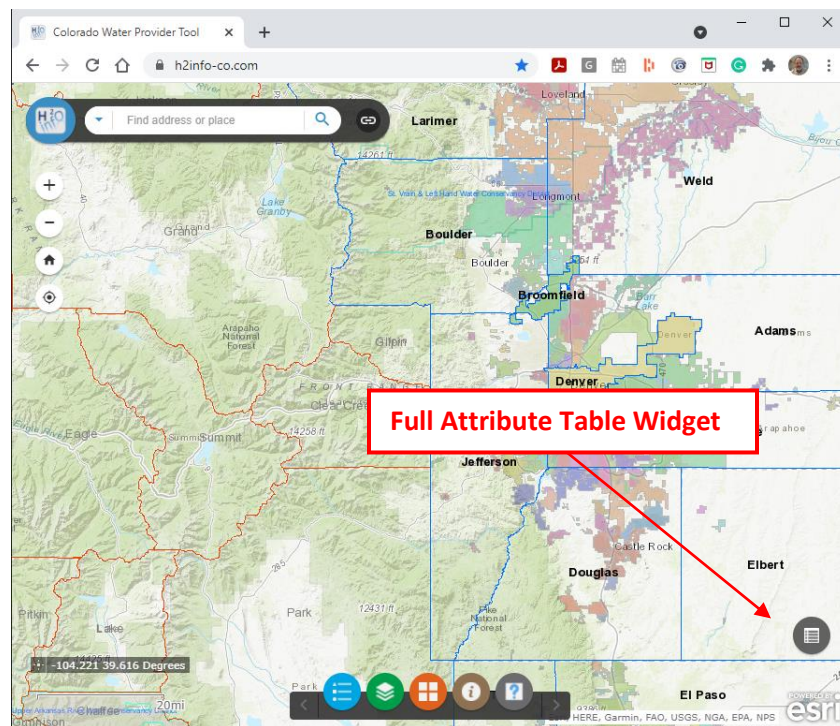
## Help

The help tool provides simple instructions on how to use the basic tool. The focus of this help tool is on the users who want to search for water providers so the information provides the basic methods of identifying that information.

## Attribute Table

The attribute table widget used in the Phase 2 user interface is completely new and it takes the place of the Full Report function implemented in the Pilot. The point of the Full Report function was to give the full list of water provider attributes to users who had additional interests beyond the basic four hyperlinked reports. The widget opens a table in the application/site that shows all of the water provider attributes in the system and additionally provides the user the ability to sort, filter and download the information to a csv file (comma separated value) for use in any spreadsheet or database program.

The attribute table is connected to the map display so it can be used to return the entire water provider data tables if the full tool extent (all 13 counties) is shown on the map.



When a user selects the Attribute Table widget the table shown below opens showing all attributes of the water provider. To export the data, a user needs to select the “Options” choice in the top banner and then the “Export all to CSV” as shown in the figure below.

County	Public Water System Provider Name	Population	Water_Srce	Contact_Inform	HB 10-1051	Municipality or County if available	Water Loss Audits Y/N	Sanitation and Wastewater Provider Y/N	Regional Water Authority Group Member Y/N	If Yes Name and URL	Re Bc Mi
LARIMER	Fort Collins Loveland Water District	36,511	Purchased Surface Water			County - Larimer	N				Ye

## Water Provider Database

### Sources

Data collected in the water provider database comes primarily from three public but disparate sources: the Colorado Department of Local Affairs (DOLA), county assessors, and the water providers themselves. Secondary sources include regional water organizations, such as the Pikes Peak Regional Water Authority and the South Metro Water Supply Authority, and the State’s HB-1051 database that is publicly accessible at <http://cowaterefficiency.com>. Access to this site requires setting up an account but it is open to users desiring more details about those water providers who report HB-1051 data.

The most significant mapping variable in the system is the water provider service area boundary. This, by and large, came from the water provider inputs to the DOLA system which shows water district/utility boundaries and other district boundaries of interest such as metropolitan districts which often have a PWSID number.

Nearly all water provider specific information such as annual rates/fees, conservation plans, water quality reports and contact information comes from the water districts themselves. Some secondary water distribution districts include this information from their primary water provider so, in some cases a water district may have its own rates/fees but references Denver Water’s water quality and conservation plans as their own.

*Content Description*

The attributes collected and curated for the water providers in the pilot program are shown with a brief description, in the table below.

*Table 1 – Water Provider Database Attributes*

<b>Attribute</b>	<b>Description</b>	<b>Typical Source</b>
Boundary	Water Provider Physical Boundary	DOLA/County Assessors
County	Political boundary	DOLA/County Assessors
Population	Census	DOLA
Water Source	Ground Water/Purchase Surface Water/Surface Water	DOLA
Contact Information	Address	DOLA/Water Providers
HB 1051 Reporting (Y/N)	Water Provider Participation	HB-1051 Site
HP-1051 Gallons/Capita/Day	Self explanatory	HB-1051 Site
HP-1051 Non-Revenue System Loss/Yr	Self explanatory	HB-1051 Site
Municipality or County	Political boundary	DOLA/County Assessors
Water Loss Audits (Y/N)	Performed and published?	Water Provider Sites
Sanitation and Wastewater Provider? (Y/N)	Self explanatory	Water Provider Sites
Regional Water Authority Group Member (Y/N) and URL	Self explanatory	Regional Water Group Sites
Regular Board Meetings	Self-explanatory	Water Provider Sites
Conservation Irrigation Use Restrictions	Self-explanatory	Water Provider Sites
Public Water System ID Number	Self-explanatory	DOLA/CDPHE Data
Web Page URL	Link to main water provider site	Water Provider and DOLA
Conservation Plan URL	Link to water provider conservation plan if available	Water Provider
Consumer Confidence Report	Link to water provider water quality and/or consumer confidence report if available	Water Provider
Rates and Fees	Link to water provider rates and fees sites for current year or all published years	Water Provider
Integration with Land Use Plan	Link to land use plan if available	Water Provider
Governmental Type	Special District, Community, Municipality, etc	Water Provider/DOLA
Public Water System Provider Name	Official Name of Water provider	DOLA/CDPHE
Participation in Integrated Land Use and Water Supply/(Y/N)	Is there a published relationship between water providers and land use entities?	Water Provider
Source	Notes on the source of the data elements	Various



## Output

The Phase 2 tool eliminated the idea of “report generation” in favor of displaying basic information online for immediate user understanding and application and providing viewing, sorting, filtering and downloading all tabular attribute information for any water provider in the Phase 2 area.

System data can be printed by downloading the attributes from the attribute table or by taking a screen shot of the data. This approach was taken in Phase 2 to simplify the general system use while maintaining the ability to extract more detailed information from the tool.

## Final Thoughts

### Outreach

Outreach will continue to focus on regional water authorities and basin Roundtable presentations. The team provided updates on the Phase 2 tool to the Pikes Peak Regional Water Authority and the South Metro Water Supply Authority and will be sending out updates to the Arkansas and Metro Roundtables through the Summer of 2021. The team continues to make regularly appearances at and announcements to the members of these groups.

One simple approach taken by the team was to prepare and print business cards with the tool’s URL and the team’s contact information, for distribution to water providers so that they can engage their billing and administrative/customer teams to bookmark the tool and use it to help answer calls for support that might come from customers who are actually outside their service area. This particular issue has been highlighted by a number of water providers as a direct benefit to them since it offers the possibility of reducing or shortening time spent directing water users to the correct water provider.



Figure 6 - Business Card

The team also hopes to work with County assessors whose counties are included in the system. The addition of the northern counties now offers the opportunity to provide a more comprehensive and useful service to these new assessors.

Finally, the outreach will focus on State and Regional Realtor organizations such as the Pikes Peak Association of Realtors and their Colorado State multiple listing service (MLS) counterparts.

### Tool Expansion

The Phase 2 tool deployment represents the first operational deployment of the tool and the region covered by this Phase incorporates the primary urban range of water provider complexities in Colorado. Even though that’s the case, there are a number of possible expansion directions for the tool.

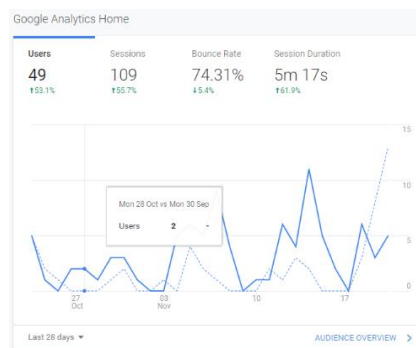
We’ve discussed with realtors the possibility of adding links to well and water rights types of public information sites as well as connecting in a more analytical way for real estate and land development types of customers who want to dig deeper into water issues at particular locations

Another area of tool expansion could be to create a more comprehensive water provider information tool for government users at the State and Local levels. Creating the dataset and user interface for this tool revealed many holes in the State data sets that aren’t filled by any particular organization. DOLA sourced a number of the attributes in the tool’s dataset but they don’t keep track of changing service area boundaries. Looking to non-governmental organizations such as the Special District’s Association also leads to datasets that don’t always keep up with the full breadth of water providers in Colorado.

These areas offer opportunities to expand the tool or extend a different version of the tool, using the underlying data sets, for specific interest groups.

### Tool Analytics

The team implemented a basic Google Analytics component in the Phase 2 deployment of the tool beginning in May 2021 and will track site visit details associated with visitors including the type of device accessing the tool, browser type, return vs new users, times of visits, time on the site, and referral or non-referral visitors.



We will be tracking trends and interactions with the tool over the course of the coming months to determine whether there are changes required in how we are making the tool available and known to the using public.

Two specific metric of interest for the team are return vs new visitors and session duration. Return visitors are those who consistently use the tool, we assume, as part of their day to day activities. This class of users would include water provider and realtors.

## Conclusions

The development, deployment and operations of the Phase 2 tool has added more universal access and value to the information in the water provider database. Expanding the tool to include all of the Denver metropolitan area as well as the growing northern Front Range urban centers of Fort Collins, Loveland, Windsor, Greeley and Longmont will accommodate a number of rapidly growing residential developments.

The team plans to operate and update the tool for the indefinite future using sponsorships from water providers and realtors. There are certainly opportunities to add other Colorado counties or targeted municipalities with growing water and metropolitan districts.

User interface modifications will be kept to a minimum for the foreseeable future as users become accustomed to the site. More changes could be made but will be made only after assessing potential impact to the user experience. The team made solid progress toward making the mobile site more friendly for users and in simplifying the tool by removing unnecessary steps to acquiring information.

Quality of water provider attributes will always be an on-going challenge that will be addressed as the tool evolves and as input is received. Service area boundaries are the largest challenge due to the shifting jurisdictions associated with these features. Annual updates in data have been accomplished over the past two years and those modifications (Rates/Fees, Conservation Plans, Water Quality) are relatively straightforward to update. Boundaries require more man power and care to make sure that critical information is correct. One approach that the team plans to take with these boundaries is to establish technical and data sharing connections with the larger water providers in counties so that the boundaries between those providers and others can be more automatically checked.

Water Provider Relationships – the complex agreements between large and small water providers that we noted during the Pilot program, especially with Denver Water, played out in the Phase 2 geographic expansion as well with many small municipalities operating/managing customer interactions though their water was provided by a larger water district. The example in the northern Front Range that showed this situation were the small municipalities of Eaton, Ault and Pierce all of which managed customer water issues though their water was provided by the large North Weld Water District. There are likely other such arrangements that the team will need to be mindful of as we edit attributes for tool users.

## Appendix A – Water Providers in the Phase 2 System (includes original Pilot providers)

County	Public Water System Provider Name	PWSID #	Governmental Type
ADAMS	Greatrock North Water and Sanitation District	CO0101063	Community
ADAMS	Hi-Land Acres Water & Sanitation District	CO0101075	Community
ADAMS	Hazeltine Heights Water & Sanitation District	CO0101070	Community
ADAMS	Northgate Water District	CO0101106	Community
ADAMS	Brighton	CO0101025	Municipality
ADAMS	Federal Heights	CO0101055	Municipality
ADAMS	Northglenn	CO0101115	Municipality
ADAMS	Thornton	CO0101150	Municipality
ADAMS	South Beebe Draw Metro	Inactive	Water and Sanitation
ADAMS	Crestview Water & Sanitation	CO0101040	Community
ADAMS	Industrial Park Water & Sanitation District		Water and Sanitation
ADAMS	North Washington St Water & Sanitation District	CO0101105	Community
ADAMS	South Adams County Water & Sanitation District	CO0101140	Community
ADAMS	North Lincoln Water & Sanitation District	CO0116552	Water and Sanitation
ADAMS	Himalaya Water & Sanitation District		Water and Sanitation
ADAMS	Central Adams County Water & Sanitation District		Water and Sanitation
ADAMS	Bennett	CO0101020	Municipality
ADAMS	North Pecos Water & Sanitation District	CO0116553	Water and Sanitation
ADAMS	Strasburg Sanitation and Water District	CO0101145	Community
ARAPAHOE	Country Homes Metro District	CO0103086	Water District
ARAPAHOE	Rangeview Metro	CO0103666	Water District
ARAPAHOE	Deer Trail Metro District	CO0103030	Municipality
ARAPAHOE	Galleria Metro District		Water and Sanitation
ARAPAHOE	Englewood	CO0103045	Municipality
ARAPAHOE	Glendale	CO0103055	Municipality
ARAPAHOE	Southeast Englewood Water District	CO0103720	Water District
ARAPAHOE	Cherry Hills North W&S	CO0116179	Water and Sanitation
ARAPAHOE	Littleton	CO0103476	Water and Sanitation
ARAPAHOE	Cherry Hills Village	CO0196618	Water and Sanitation
ARAPAHOE	Arapahoe County Water and Wastewater Authority	CO0203002	Water and Sanitation
ARAPAHOE	Southgate Water District	CO0103721	Water and Sanitation District
ARAPAHOE	Inverness Water & Sanitation District	CO0203012	Water and Sanitation
ARAPAHOE	Hi-Lin Water & Sanitation District	CO0116343	Water and Sanitation
ARAPAHOE	Hillcrest Water & Sanitation District	CO0103345	Water and Sanitation
ARAPAHOE	Castlewood Water & Sanitation District	CO0103166	Water and Sanitation
ARAPAHOE	Bow Mar Water & Sanitation District	CO0103153	Water and Sanitation
ARAPAHOE	Holly Hills Water & Sanitation District	CO0116352	Water and Sanitation
ARAPAHOE	Cherry Creek Village Water District	CO0103176	Water District
ARAPAHOE	Aurora Water	CO0103005	Municipality
ARAPAHOE	Cherry Hills Heights Water & Sanitation District	CO0103178	Water and Sanitation

## H2info – Colorado’s Water Provider Information Tool Phase 2

April 22, 2021

ARAPAHOE	Devonshire Heights Water & Sanitation District	CO0103205	Water and Sanitation
ARAPAHOE	East Cherry Creek Valley Water and Sanitation	CO0103035	Water and Sanitation
ARAPAHOE	Byers Water & Sanitation District	CO0103010	Water and Sanitation
ARAPAHOE	Willows Water District	CO0103100	Water District
ARAPAHOE	Mansfield Heights Water & San. District	CO0103500	Water and Sanitation
ARAPAHOE	East Valley W&S	CO0103040	Water and Sanitation
ARAPAHOE	Columbine Water & Sanitation District	CO0103085	Water and Sanitation
Adams	City of Westminster	CO0101170	Water and Sanitation
BOULDER	Allenspark Water & Sanitation District	CO0107115	Community
BOULDER	Baseline Water District	CO0107135	
BOULDER	East Boulder County Water District	CO0107236	Community
BOULDER	Hoover Hill Water & Sanitation District	CO0107352	
BOULDER	Left Hand Water District	CO0107471	Community
BOULDER	Longs Peak Water District	CO0107486	
BOULDER	Olde Stage Water District	CO0107582	
BOULDER	Pine Brook Hills Water District	CO0107610	
BOULDER	Shannon Water and Sanitation District	CO0107710	
BOULDER	Lafayette	CO0107473	Municipality
BOULDER	Longmont	CO0107485	Municipality
BOULDER	Louisville	CO0107487	Municipality
BROOMFIELD	Broomfield	CO0107155	Municipality
Boulder	City of Boulder	CO0107152	Municipality
Boulder	City of Lafayette	CO0107473	
Boulder	City of Superior	CO0107725	
Boulder	Town of Erie	CO0162255	
Boulder	Town of Jamestown	CO0107401	
Boulder	Town of Nederland	CO0107538	
Boulder	Town of Ward	CO0107834	
Boulder	City of Louisville	CO0107487	
Boulder	City of Longmont	CO0107485	
Boulder	COLLEGE PARK WATER & SANITATION		
Boulder	Town of Lyons	CO0107496	
DENVER	SOUTH DENVER METROPOLITAN DISTRICT	CO0116001	
DENVER	SOUTH DENVER METROPOLITAN DISTRICT	CO0116001	
DENVER	SOUTH DENVER METROPOLITAN DISTRICT	CO0116001	
DENVER	SOUTH DENVER METROPOLITAN DISTRICT	CO0116001	
DENVER	SOUTH DENVER METROPOLITAN DISTRICT	CO0116001	
DENVER	SOUTH DENVER METROPOLITAN DISTRICT	CO0116001	
DENVER	MIDTOWN METROPOLITAN DISTRICT PARCEL 2	CO0116001	DISTRICT
DENVER	SOUTH DENVER METROPOLITAN DISTRICT	CO0116001	
DENVER	SOUTH DENVER METROPOLITAN DISTRICT	CO0116001	
DENVER	MIDTOWN METROPOLITAN DISTRICT PARCEL 2	CO0116001	DISTRICT



DENVER	COMM COORD METRO DIST 1 BROADWAY3TRIANGLE PARK	CO0116001	
DENVER	SOUTH DENVER METROPOLITAN DISTRICT CO INTERNATIONAL CENTER METRO DIST 13 AND 14 PAR B	CO0116001	PARCEL 37
DENVER	BROADWAY STATION METRO DIST INCLUSION AREA 1	CO0116001	INCLUSION AREA
DENVER	AVIATION STATION NORTH METRO DISTRICT NO. 4 CENTRAL PLATTE VALLEY METRO DISTRICT PARCEL 4B	CO0116001	DISTRICT
DENVER	CENTRAL PLATTE VALLEY METRO DISTRICT PARCEL 6A	CO0116001	
DENVER	BROADWAY STATION METRO DIST INCLUSION AREA 4	CO0116001	INCLUSION AREA
DENVER	WESTERLY CREEK METROPOLITAN DISTRICT CENTRAL PLATTE VALLEY COORDINATION METRO DIST	CO0116001	OPEN SPACE
DENVER	CCP METROPOLITAN DISTRICT 2	CO0116001	DISTRICT
DENVER	SOUTH DENVER METROPOLITAN DISTRICT CENTRAL PLATTE VALLEY METRO DISTRICT PARCEL 23	CO0116001	
DENVER	BROADWAY STATION METROPOLITAN DISTRICT NO. 3	CO0116001	METRO DISTICT
DENVER	CENTRAL PLATTE VALLEY COORDINATION METRO DIST	CO0116001	DISTRICT
DENVER	DENVER HIGH POINT AT DIA METRO DIST PARCEL A	CO0116001	DISTRICT
DENVER	CENTRAL PLATTE VALLEY METRO DIST PARCEL 8B	CO0116001	
DENVER	WEST GLOBEVILLE METRO DIST INCLUSION AREA SOUTHEAST PUBLIC IMPROVEMENT METRO DIST PARCEL 2	CO0116001	INCLUSION AREA
DENVER	DUS METROPOLITAN DISTRICT NO. 3	CO0116001	DISTRICT
DENVER	SECTION 14 METRO DISTRICT (debt only) COMM COORD METRO DIST 1 BROADWAY4TRIANGLE PARK	CO0116001	
DENVER	FAIRLAKE METRO DISTRICT PARCEL 1	CO0116001	
DENVER	LOWRY VISTA METRO DISTRICT	CO0116001	
DENVER	SOUTH DENVER METRO DISTRICT	CO0116001	
DENVER	DENARGO MARKET METRO DISTRICT 3	CO0116001	
DENVER	PARK CREEK METRO DISTRICT	CO0116001	OPEN SPACE
DENVER	BROADWAY STATION METRO DISTRICT NO. 2 CO INTERNATIONAL CENTER METRO DIST 14 PARCEL 3	CO0116001	METRO DISTICT
DENVER	SOUTH SLOAN'S LAKE METRO DISTRICT NO. 2	CO0116001	DISTRICT
DENVER	SOUTH DENVER METRO DISTRICT	CO0116001	
DENVER	SMITH METRO DISTRICT INCLUSION AREA	CO0116001	INCLUSION AREA
DENVER	BOWLES METRO DISTRICT PARCEL 1	CO0116001	Metro district
DENVER	FAIRLAKE METRO DISTRICT PARCEL 1	CO0116001	
DENVER	BELLEVUE STATION METRO DISTRICT NO. 2	CO0116001	

DENVER	9TH AVENUE METRO DISTRICT NO. 2	CO0116001	DISTRICT
DENVER	COMM COORD METRO DIST 1	CO0116001	
DENVER	BROADWAY2TRIANGLE PARK	CO0116001	
DENVER	CO INTERNATIONAL CENTER METRO DIST 13 AND 14	CO0116001	
DENVER	PAR A	CO0116001	
DENVER	CENTRAL PLATTE VALLEY METRO DISTRICT PARCEL 7B	CO0116001	
DENVER	COMM COORD METRO DIST 1	CO0116001	
DENVER	BROADWAY1TRIANGLE PARK	CO0116001	
DENVER	CENTRAL PLATTE VALLEY METRO DISTRICT PARCEL 24	CO0116001	
DENVER	SMITH METRO DISTRICT NO. 3	CO0116001	DISTRICT
DENVER	ALAMEDA STATION METRO DIST INCLUSION AREA 2	CO0116001	Inclusion Area
DENVER	DUS METRO DISTRICT NO. 5	CO0116001	
DENVER	AVIATION STATION NORTH METR DISTRICT NO. 6	CO0116001	DISTRICT
DENVER	SAND CREEK METRO DISTRICT PARCEL B	CO0116001	DISTRICT
DENVER	DEN INTERNATIONAL BUSINESS CENTER METRO DIST 1	CO0116001	DISTRICT
DENVER	CENTRAL PLATTE VALLEY METRO DIST PARCEL 6B	CO0116001	
DENVER	SOUTHEAST PUB IMPROVEMENT METRO DIST PARCEL 1	CO0116001	DISTRICT
DENVER	CENTRAL PLATTE VALLEY METRO DIST PARCEL 4A	CO0116001	
DENVER	SOUTH DENVER METRO DISTRICT	CO0116001	PARCEL 28
DENVER	SOUTH DENVER METRO DISTRICT	CO0116001	
DENVER	CCP METROPOLITAN DISTRICT 1	CO0116001	DISTRICT
DENVER	SOUTH DENVER METRO DISTRICT	CO0116001	PARCEL 32
DENVER	DUS METROPOLITAN DISTRICT NO. 1	CO0116001	
DENVER	SOUTH DENVER METRO DISTRICT	CO0116001	
DENVER	CENTRAL PLATTE VALLEY METRO DIST PARCEL 5	CO0116001	
DENVER	SMITH METROPOLITAN DISTRICT NO. 1	CO0116001	DISTRICT
DENVER	BROADWAY STATION METRO DIST NO. 1	CO0116001	METRO DISTICT
DENVER	DENVER GATEWAY MEADOWS METRO DIST	CO0116001	
DENVER	MIDTOWN METRO DISTRICT PARCEL 1	CO0116001	DISTRICT
DENVER	MILE HIGH BUSINESS CENTER METRO DISTRICT	CO0116001	DISTRICT
DENVER	BOWLES METROPOLITAN DISTRICT PARCEL 2	CO0116001	Metro district
DENVER	SMITH METROPOLITAN DISTRICT NO. 2	CO0116001	DISTRICT
DENVER	SAND CREEK METRO DISTRICT PARCEL A	CO0116001	DISTRICT
DENVER	AVIATION STATION NORTH METRO DIST NO. 5	CO0116001	DISTRICT
DENVER	AVIATION STATION NORTH METRO DIST INCLU AREA	CO0116001	INCLUSION AREA
DENVER	COMM COORD METRO DIST 1 24TH ST TRIANGLE PARK	CO0116001	
DENVER	DENARGO MARKET METRO DIST - INCLUSION AREA	CO0116001	
DENVER	GATEWAY REGIONAL METRO DISTRICT	CO0116001	
DENVER	SBC METROPOLITAN DISTRICT	CO0116001	NEW INCLUSION
DENVER	9TH AVENUE METRO DISTRICT NO. 1	CO0116001	DISTRICT
DENVER	GREENWOOD METROPOLITAN DISTRICT	CO0116001	DISTRICT

DENVER	SOUTH DENVER METRO DISTRICT	CO0116001	
DENVER	FIRST CREEK VILLAGE METRO DISTRICT	CO0116001	DISTRICT
DENVER	DUS METROPOLITAN DISTRICT NO. 4	CO0116001	
DENVER	CENTRAL PLATTE VALLEY METRO DIST PARCEL 9A	CO0116001	
DENVER	COMM COORD METRO DIST1 E. MAESTES TRIANGLE PARK	CO0116001	
DENVER	BROADWAY STATION METRO DIST INCLUSION AREA 2	CO0116001	INCLUSION AREA
DENVER	ALAMEDA STATION METRO DISTRICT	CO0116001	Metro District
DENVER	BELLEVIEW STATION METRO DIST NO. 3	CO0116001	
DENVER	CO INTERNATIONAL CENTER METRO DIST 13 AND 14 PAR C	CO0116001	
DENVER	BMP METRO DISTRICT INCLUSION AREA	CO0116001	Inclusion Area
DENVER	DENVER HIGH POINT AT DIA METRO DIST PARCEL B	CO0116001	DISTRICT
DENVER	CENTRAL PLATTE VALLEY METRO DIST PARCEL 8	CO0116001	
DENVER	SOUTH DENVER METRO DISTRICT	CO0116001	7ft parcel_p12
DENVER	FAIRLAKE METRO DISTRICT PARCEL 1A	CO0116001	
DENVER	SOUTH SLOAN'S LAKE METRO DIST NO. 1	CO0116001	DISTRICT
DENVER	SBC METROPOLITAN DISTRICT	CO0116001	
DENVER	MIDTOWN METRO DIST PARCEL 3	CO0116001	DISTRICT
DENVER	DENARGO MARKET METRO DIST 1	CO0116001	
DENVER	ALAMEDA STATION METRO DIST INCLU AREA 1	CO0116001	Inclusion Area
DENVER	DENVER CONNECTION WEST METRO DIST	CO0116001	DISTRICT
DENVER	CO INTERNATIONAL CENTER METRO DIST 13 PARCEL 2	CO0116001	
DENVER	9TH AVENUE METRO DIST FUTURE INCLUSION AREA	CO0116001	INCLUSION AREA
DENVER	DENVER HIGH POINT AT DIA METRO DIST PARCEL C	CO0116001	DISTRICT
DENVER	FIRST CREEK VILLAGE METRO DIST INCLU AREA	CO0116001	INCLUSION AREA
DENVER	WEST GLOBEVILLE METRO DISTRICT NO. 2	CO0116001	DISTRICT
DENVER	DENARGO MARKET METRO DISTRICT 2	CO0116001	
DENVER	AVIATION STATION NORTH METRO DIST NO. 1	CO0116001	DISTRICT
DENVER	AVIATION STATION NORTH METRO DIST NO. 3	CO0116001	DISTRICT
DENVER	SECTION 14 METRO DISTRICT	CO0116001	
DENVER	WESTERLY CREEK METRO DISTRICT	CO0116001	SERV DISTRICT
DENVER	BOWLES METRO DISTRICT PARCEL 3	CO0116001	Metro district
DENVER	9TH AVENUE METRO DISTRICT NO. 3	CO0116001	DISTRICT
DENVER	BELLEVIEW STATION METRO DIST NO. 1	CO0116001	
DENVER	CCP METROPOLITAN INCLUSION AREA	CO0116001	INCLUSION AREA
DENVER	EBERT METROPOLITAN DISTRICT	CO0116001	
DENVER	SOUTH SLOAN'S LAKE METRO DIST INCLU AREA	CO0116001	INCLUSION AREA
DENVER	DENVER GATEWAY CENTER METRO DISTRICT	CO0116001	METRO DISTRICT
DENVER	AVIATION STATION NORTH METRO DIST NO. 2	CO0116001	DISTRICT
DENVER	TOWN CENTER METROPOLITAN DISTRICT	CO0116001	
DENVER	BROADWAY STATION METRO DIST INCLU AREA 3	CO0116001	INCLUSION AREA

## H2info – Colorado’s Water Provider Information Tool Phase 2

April 22, 2021

DENVER	WEST GLOBEVILLE METRO DISTRICT NO. 1	CO0116001	DISTRICT
DENVER	BMP METROPOLITAN DISTRICT NO. 1	CO0116001	Metro district
DENVER	PARK CREEK METRO DISTRICT	CO0116001	SERV DISTRICT
DENVER	DUS METROPOLITAN DISTRICT NO. 2	CO0116001	
DENVER	BMP METROPOLITAN DISTRICT NO. 3	CO0116001	Finance Distric
DENVER	SMITH METROPOLITAN DISTRICT NO. 4	CO0116001	DISTRICT
DENVER	SOUTH DENVER METRO DISTRICT	CO0116001	
DENVER	SOUTHEAST PUB IMPROVE METRO DIST PARCEL 3	CO0116001	DISTRICT
DENVER	BMP METROPOLITAN DISTRICT NO. 2	CO0116001	Finance Distric
DENVER	GVR METROPOLITAN DISTRICT	CO0116001	METRO DISTRICT
DENVER	CENTRAL PLATTE VALLEY METRO DIST PARCEL 1B	CO0116001	
DENVER	SOUTH DENVER METROPOLITAN DISTRICT	CO0116001	
DENVER	SOUTH DENVER METROPOLITAN DISTRICT	CO0116001	ORIGINAL PARCEL
DENVER	CENTRAL PLATTE VALLEY METRO DIST PARCEL 21	CO0116001	
DENVER	GOLDSMITH METROPOLITAN DISTRICT	CO0116001	DISTRICT
DENVER	CENTRAL PLATTE VALLEY METRO DIST PARCEL 17A	CO0116001	
DENVER	SOUTH DENVER METROPOLITAN DISTRICT	CO0116001	
DENVER	Denver Water	CO0116001	Water and Sanitation
DENVER	Cherry Creek Valley Water And Sanitation	CO0116175	Water and Sanitation
DOUGLAS	Centennial Water & Sanitation District	CO0118015	Water and Sanitation
DOUGLAS	Westcreek Lakes Water District	CO0118085	Water District
DOUGLAS	Perry Park Water & Sanitation District	CO0118045	Water and Sanitation
DOUGLAS	Thunderbird Water & Sanitation District	CO0118078	Water and Sanitation
DOUGLAS	Sedalia Water & Sanitation District	CO0118060	Water and Sanitation
DOUGLAS	North Douglas County Water & Sanitation Dist	CO0118016	Water and Sanitation
DOUGLAS	Castleton Center Water & Sanitation District	CO0208039	Water and Sanitation
DOUGLAS	Parker Water & Sanitation District	CO0118040	Water and Sanitation
DOUGLAS	Airport Vista Metro 1		Water and Sanitation
DOUGLAS	Airport Vista Metro 2		Water and Sanitation
DOUGLAS	Castle Pines Metropolitan	CO0118005	Water and Sanitation
DOUGLAS	Castle Pines North Metro	CO0118006	Water and Sanitation
DOUGLAS	Compark Business Campus Metro		Water and Sanitation
DOUGLAS	Consolidated Bell Mountain Ranch Metro	CO0118002	Water and Sanitation
DOUGLAS	Crowfoot Valley Ranch Metro #1		Water and Sanitation
DOUGLAS	Crowfoot Valley Ranch Metro #2		Water and Sanitation
DOUGLAS	E-470 Potomac Metro		Water and Sanitation
DOUGLAS	Green Valley W&S		Water and Sanitation
DOUGLAS	Hidden Pointe Metropolitan		Water and Sanitation
DOUGLAS	Lincoln Park Metropolitan		Water and Sanitation
DOUGLAS	Louviers Water and Sanitation District	CO0118035	Water and Sanitation
DOUGLAS	Meridian Metropolitan	CO0218015	Water and Sanitation
DOUGLAS	Meridian Village Metro 2		Water and Sanitation
DOUGLAS	North Meridian Metro		Water and Sanitation

## H2info – Colorado’s Water Provider Information Tool Phase 2

April 22, 2021

DOUGLAS	Ravenna Metro	CO0118665	Water and Sanitation
DOUGLAS	Remuda Ranch Metro		Water and Sanitation
DOUGLAS	Solitude Metro Dist		Water and Sanitation
DOUGLAS	South Meridian Metro		Water and Sanitation
DOUGLAS	South Santa Fe Metro 1		Water and Sanitation
DOUGLAS	South Santa Fe Metro 2		Water and Sanitation
DOUGLAS	Stonegate Village Metro	CO0118076	Water and Sanitation
DOUGLAS	Castle Rock	CO0118010	Municipality
DOUGLAS	Dominion Water and San Dist (Sterling Ranch)	CO0118021	Water and Sanitation
DOUGLAS	Pinery Water & Wastewater Dist	CO0118025	Water and Sanitation
DOUGLAS	Highlands Ranch Metro		Water and Sanitation
DOUGLAS	Cottonwood Water & Sanitation District	CO0118020	Water and Sanitation
DOUGLAS	Silver Heights W&S	CO0118075	Water and Sanitation
DOUGLAS	Mirabelle Metro District		Water
DOUGLAS	Castle Pines Town Center Metro 2		Water
DOUGLAS	Castle Pines Town Center Metro 3		Water
DOUGLAS	Larkspur	CO0118030	Municipality
DOUGLAS	Chatfield South Water District	CO0118175	Water District
		CO0121455	
EL PASO	Meridian Ranch	**	Community
EL PASO	Paint Brush Hills Metropolitan District	CO0221690	
EL PASO	4-Way Ranch Metropolitan District No. 1	CO0121111	Community
EL PASO	4-Way Ranch Metropolitan District No. 2	CO0121111	Community
EL PASO	Bent Grass Metropolitan District		
EL PASO	Donala Water & Sanitation District	CO0121175	Water and Sanitation
EL PASO	Park Forest Water District	CO0121600	Water District
EL PASO	Academy Water & Sanitation District	CO0121025	Water and Sanitation
EL PASO	Pioneer Lookout Water District	CO0121625	Water District
EL PASO	Colorado Springs Utilities	CO0121150	Water District
EL PASO	Forest View Acres Water District	CO0121250	Water District
EL PASO	Calhan	CO0121075	Municipality
EL PASO	Manitou Springs	CO0121450	Municipality
EL PASO	Monument	CO0121475	Municipality
EL PASO	Palmer Lake	CO0121575	Sanitation
EL PASO	TriView Metro District	CO0121840	Municipality
EL PASO	Woodmoor Water and Sanitation District No. 1	CO0121950	Water and Sanitation
EL PASO	Woodmen Hills	CO0121930	Community
EL PASO	Cherokee Metropolitan District	CO0121125	Community
EL PASO	Cheyenne Creek Metro Park and Water District		Water
EL PASO	Forest Lakes Metro Districts	CO0121360	Water and Sanitation
EL PASO	Forest Lakes Metro Districts - Pinon Pine 1	CO0121360	Water and Sanitation
EL PASO	Forest Lakes Metro Districts - Pinon Pine 2	CO0121360	Water and Sanitation
EL PASO	Forest Lakes Metro Districts - Pinon Pine 3	CO0121360	Water and Sanitation



## H2info – Colorado’s Water Provider Information Tool Phase 2

April 22, 2021

ELBERT	Deer Creek Water District	CO0120246	Water District
ELBERT	Elbert Water & Sanitation District	CO0120005	Water and Sanitation
ELBERT	Miller Ranch Water & Sanitation District		Water and Sanitation
JEFFERSON	Westminster	CO0101170	Municipality
JEFFERSON	Clear Creek Valley Water and Sanitation District		Water and Sanitation
JEFFERSON	Lochmoor Water & Sanitation District	CO0116485	Water and Sanitation
JEFFERSON	Consolidated Mutual Water Company	CO0130021	Water District
JEFFERSON	Lakewood	CO0130467	Municipality
JEFFERSON	Valley Water District	CO0130800	Water District
JEFFERSON	Blue Mountain Water District	CO0130005	
JEFFERSON	Brook Forest Water District	CO0130010	
JEFFERSON	Buffalo Creek Water District	CO0130015	
JEFFERSON	High View Water District	CO0130344	
JEFFERSON	Indian Hills Water District	CO0130065	
JEFFERSON	Ken-Caryl West Ranch Water District	CO0130075	
JEFFERSON	Lookout Mountain Water District	CO0110026	
JEFFERSON	Meadowbrook Water District	CO0130500	
JEFFERSON	South Evergreen Water District	CO0230300	
JEFFERSON	Wheat Ridge Water District	CO0130842	Water District
JEFFERSON	Alameda Water & Sanitation District	CO0130116	Master Meter
JEFFERSON	Bancroft-Clover Water & Sanitation District	CO0130133	Water and Sanitation
JEFFERSON	Bear Creek Water & Sanitation District	CO0130138	Water and Sanitation
JEFFERSON	Berkeley Water & Sanitation District	CO0116140	Water and Sanitation
JEFFERSON	Bonvue Water & Sanitation District	CO0130152	Water and Sanitation
JEFFERSON	Genesee Water & Sanitation District	CO0130035	Water and Sanitation
JEFFERSON	Idledale Water and Sanitation District	CO0130055	Water and Sanitation
JEFFERSON	Ken-Caryl Ranch Water & Sanitation District	CO0054262	Water and Sanitation
JEFFERSON	Kittredge Sanitation & Water District	CO0140962	Water and Sanitation
JEFFERSON	Lakehurst Water and Sanitation District	CO0130466	Water and Sanitation
JEFFERSON	Mountain Water & Sanitation District	CO0130100	Water and Sanitation
JEFFERSON	North Table Mountain Water & Sanitation District	CO0130105	Water and Sanitation
JEFFERSON	Platte Canyon Water & Sanitation District	CO0103614	Water and Sanitation
JEFFERSON	Pleasant View Water & Sanitation District	CO0054379	Water and Sanitation
JEFFERSON	Ralston Valley Water & Sanitation District	CO0130667	Water and Sanitation
JEFFERSON	Roxborough Water and Sanitation District	CO0118055	Water and Sanitation
JEFFERSON	Southwest Metropolitan Water & Sanitation District	CO0103723	Water and Sanitation
JEFFERSON	Upper Bear Creek Water & Sanitation District	CO0130030	Water and Sanitation
JEFFERSON	Willowbrook Water & Sanitation District	CO0130843	Water and Sanitation
JEFFERSON	Bennett Bear Creek Farm Water and San Dist	CO0130139	Water and Sanitation
JEFFERSON	SW Suburban Denver Water and Sanitation Dist	CO0130724	Water and Sanitation
JEFFERSON	Green Mountain Water & Sanitation District	CO0130321	Water and Sanitation
JEFFERSON	Grant Water & Sanitation District		Water and Sanitation
Jefferson	City of Golden	CO0130040	Municipality

## H2info – Colorado’s Water Provider Information Tool Phase 2

April 22, 2021

Jefferson	City of Arvada	CO0130001	Water and Sanitation
Jefferson	RALSTON VALLEY WATER & SANITATION	CO0130667	Water and Sanitation
LARIMER	Little Thompson Water District	CO0135477	Water District
LARIMER	Pinewood Springs Water District	CO0135610	Water District
LARIMER	North Carter Lake Water District	CO0135553	Water District
LARIMER	Loveland	CO0135485	Municipality
LARIMER	Wellington	CO0135838	Municipality
LARIMER	West Fort Collins Water District	CO0135290	Water District
LARIMER	Fort Collins Loveland Water District	CO0135292	Water District
LARIMER	ELCO Water District	CO0135233	Water District
LARIMER	Fort Collins Utilities (Water)		Municipality
LARIMER	Sunset Water District	CO0135726	Water District
LARIMER	Spring Canyon Water District	CO0135721	Water District
LARIMER	Northern Colorado Water Association	CO0135554	Water District
TELLER	Rainbow Valley Water District	CO0160375	Water District
TELLER	Florissant Water & Sanitation District	CO0160175	Water and Sanitation
TELLER	Ridgewood Water District	CO0160400	Water District
TELLER	Highland Lakes Water District	CO0160200	Water District
TELLER	Teller County Water & Sanitation District No. 1	CO0160600	Water and Sanitation
TELLER	Westwood Lakes Water District	CO0160750	Water District
TELLER	Woodland Park	CO0160900	Municipality
WELD	Lochbuie	CO0162486	Municipality
WELD	Central Weld County Water District	CO0162122	Water District
WELD	Erie	CO0162255	Municipality
WELD	Greeley	CO0162321	Municipality
WELD	North Weld County Water District	CO0162553	Water District
WELD	Town of Severance Utilities	CO0162707	Municipality
Weld	Town of Eaton	CO0162233	Municipality
Weld	Town of Ault	CO0162125	Municipality
Weld	Town of Pierce	CO0162610	Municipal
Weld	Town of Windsor	CO0162843	Municiple