



Basin Roundtable Summit Summary of Portfolio Effort



Eric Hecox
March 1, 2012

Next Steps for the Basin Roundtables, CWCB, and IBCC

Basin Roundtables' Initial Work on
Statewide Portfolios

Basin Roundtable Summit

Basin Roundtables Refine Statewide
Portfolios

May IBCC Meeting

CWCB/IBCC Finalize Scenario Planning
(Evaluation and Adaptive Management)

Basin Roundtable Feedback on Scenario
Planning and Adaptive Management

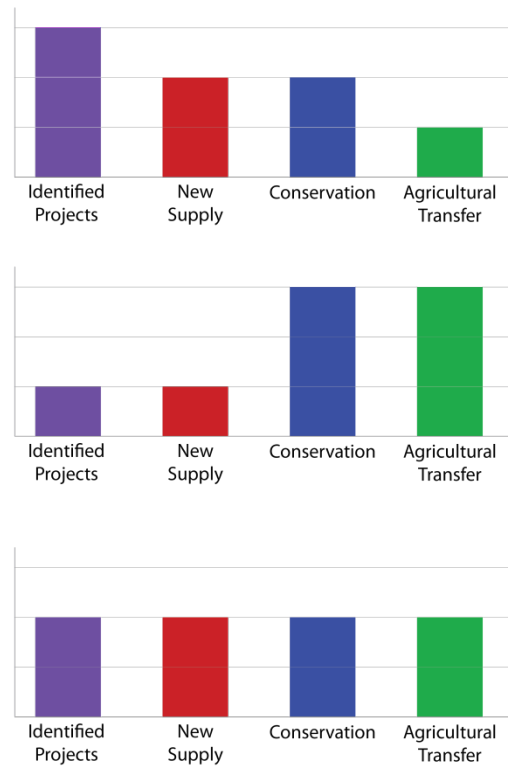
Basin Roundtables work on near and
long-term implementation actions

Utilize
information to
develop
Governor's
Water Plan,
SWSI 2016, and
inform policy
and intrastate
discussions

Scenarios will reveal common elements



Example Statewide Portfolios

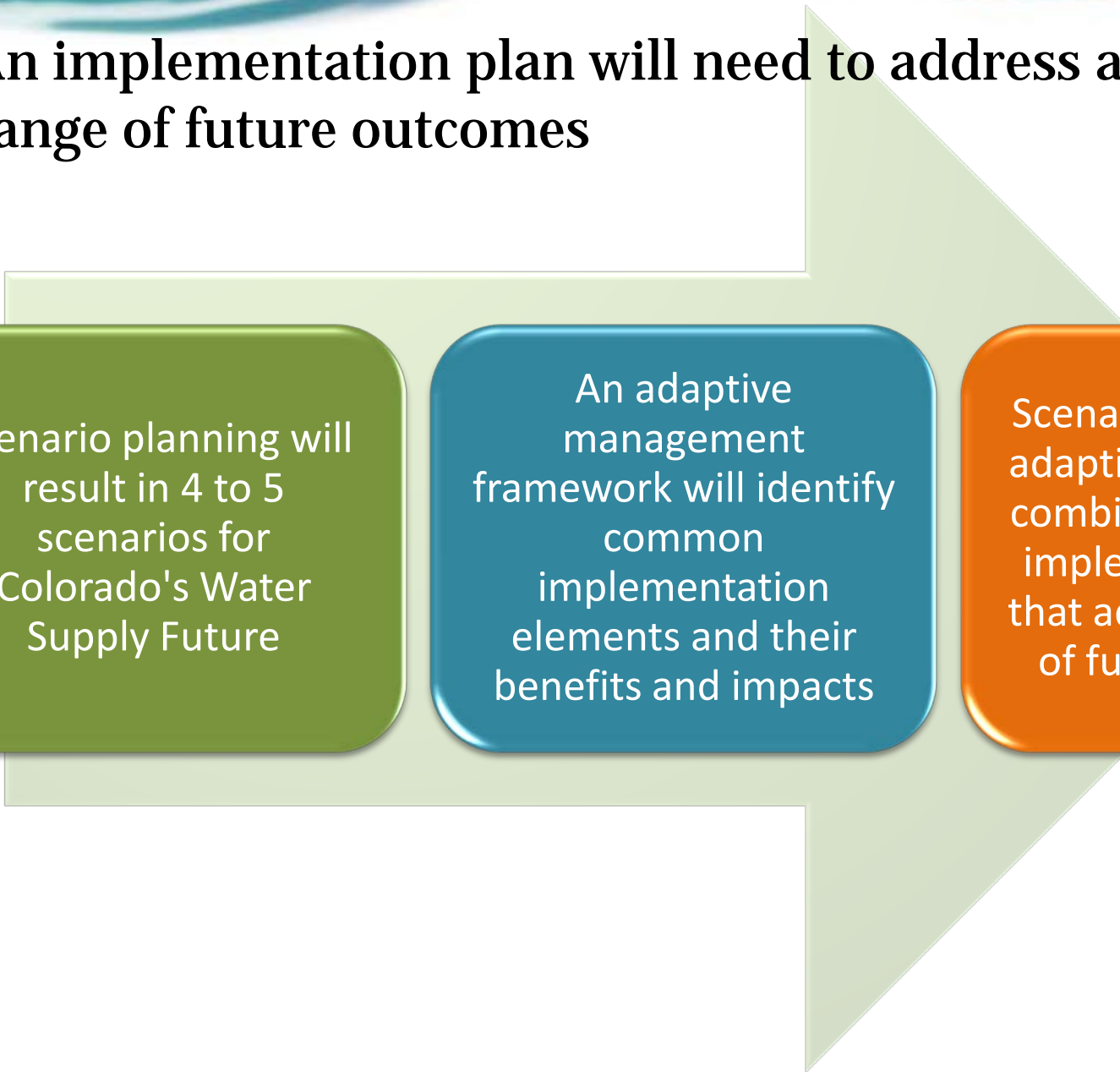


IBCC and Subcommittees

- Complete scenario exercise
- Identify common elements from scenarios
- Explore trade-offs and metrics for portfolios
- Determine implementation elements of portfolios



An implementation plan will need to address a range of future outcomes



Scenario planning will result in 4 to 5 scenarios for Colorado's Water Supply Future

An adaptive management framework will identify common implementation elements and their benefits and impacts

Scenario planning and adaptive management combined allow for an implementation plan that addresses a range of future outcomes

Summary scenarios based on roundtable's current portfolios

Scenario	Demands	IPP Yield Success	Conservation Savings	Colorado River System	Agricultural Transfers (% acres reduced)
1	Low Population Growth	80%	Low to Medium Strategy with no savings applied to M&I Gap	50,000 to 100,000 AFY	None beyond IPPs and urbanization
2	Moderate Population Growth	80%	Medium to High Strategy with 30% to 60% of savings applied to M&I Gap	80,000 to 100,000 AFY	West slope: none East Slope: small amount beyond IPPs and urbanization
3	Moderate Population Growth	80%	Low to Medium Strategy with little savings applied to M&I Gaps	150,000 to 300,000 AFY	None beyond IPPs and urbanization
4	High Population Growth	80%	Medium to High Strategy with 30% to 60% of savings applied to M&I Gap	0 AFY	West Slope: 15% to 35%; Arkansas: 5% to 20%; South Platte: 20% to 50%
5	High Population Growth	80%	Low to Medium Strategy with 30% to 60% of savings applied to M&I Gap	130,000 to 230,000 AFY	West Slope: 10% to 40%; Arkansas: 5% to 20%; South Platte: 20% to 45%

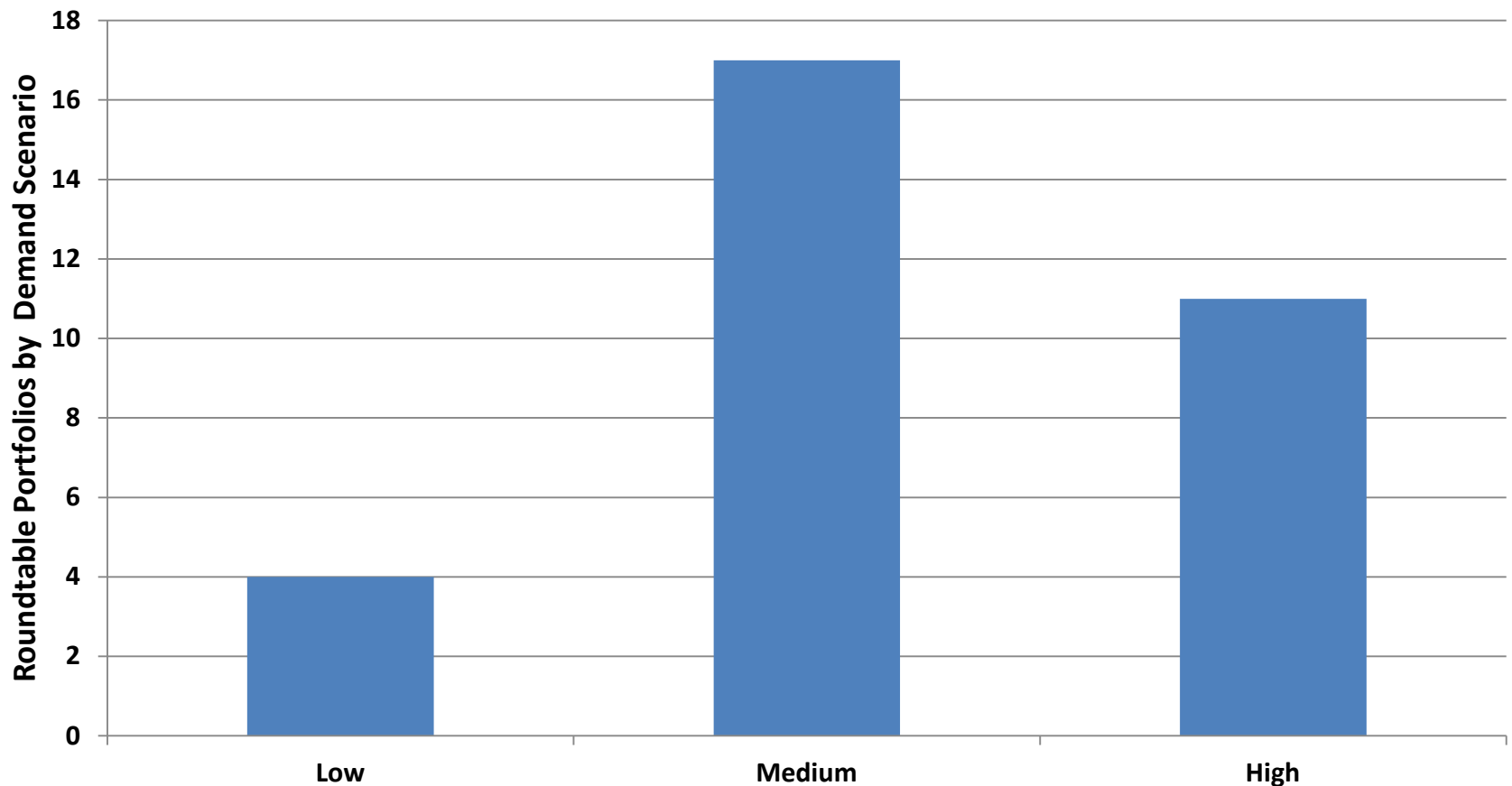


Basin Roundtable Summit Understanding the Portfolios



Jacob Bornstein
March 1, 2012

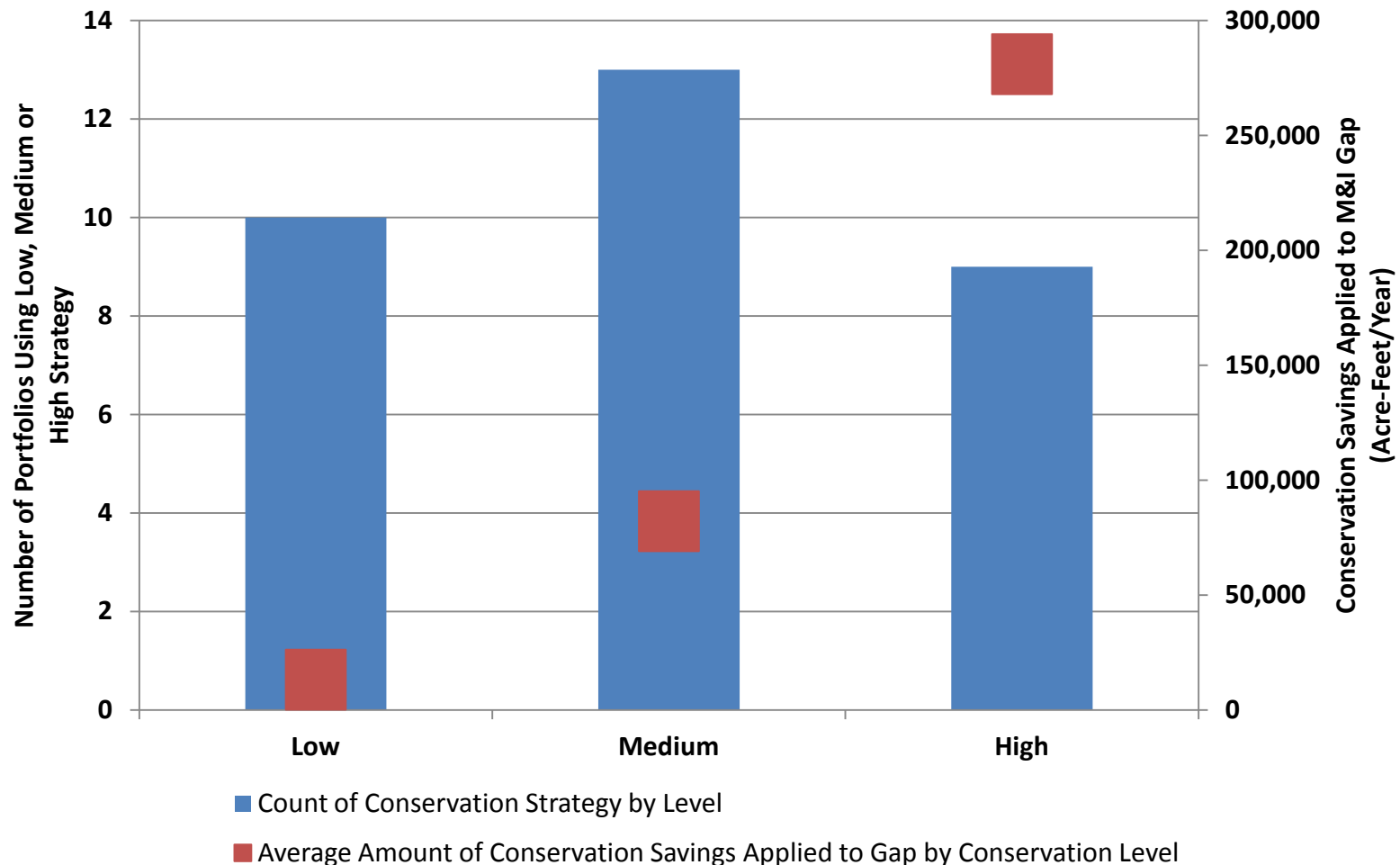
M&I demands - the majority of basin roundtables have focused on the medium to high demand scenario



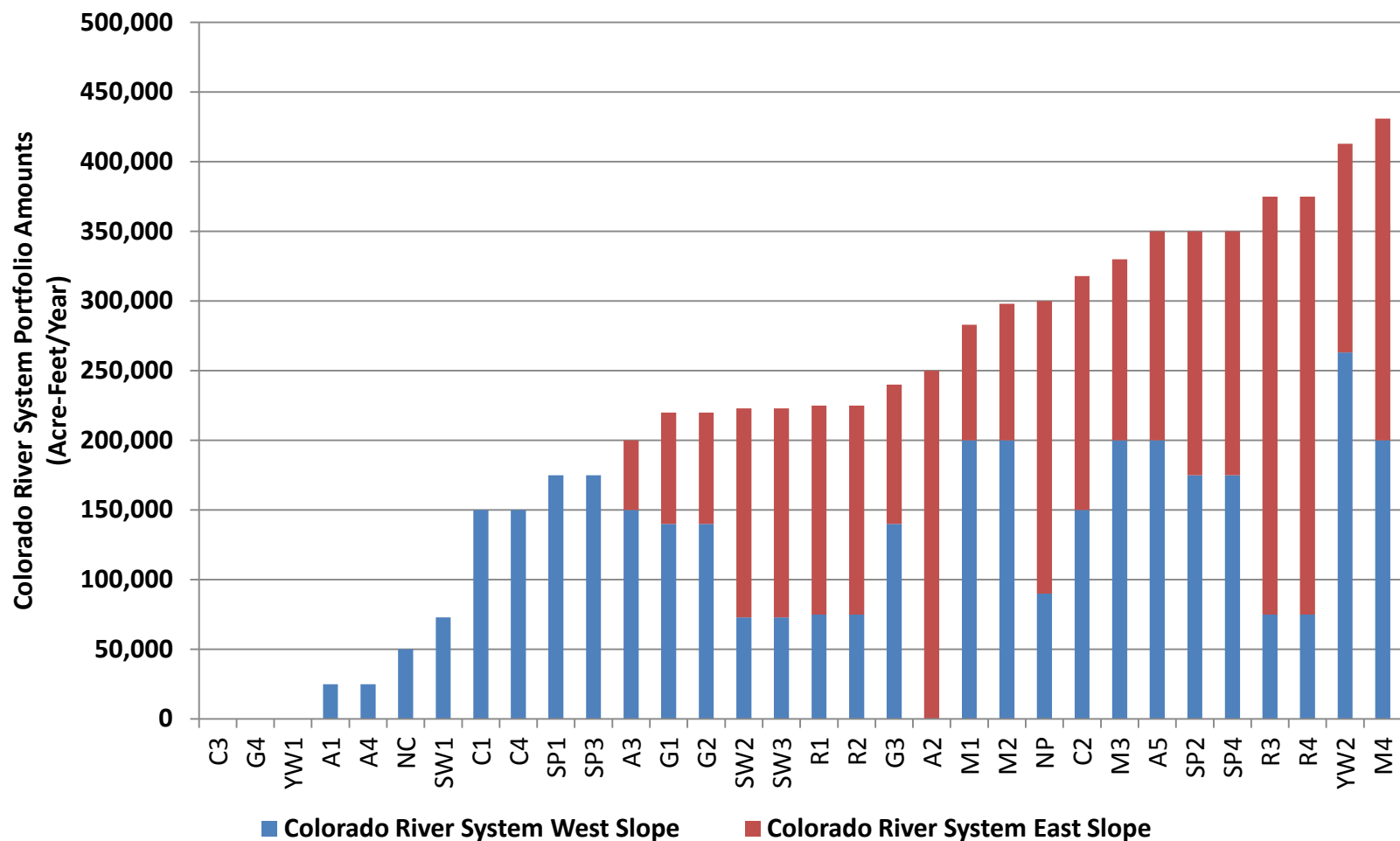
Identified projects and processes – all of the basin roundtables have set IPP yield success rate at ~80%

Basin	Agricultural Transfer	Reuse	Existing Supplies	In-Basin Project	Transbasin	In-Basin Firming	Total Success Rate
Arkansas	75%	75%	100%	100%	75%	80%	86%
Colorado	90%	90%	100%	85%	90%	85%	91%
Gunnison	90%	90%	100%	90%	90%	90%	88%
Metro	75%	75%	100%	75%	75%	75%	88%
North Platte	0%	90%	100%	90%	90%	90%	100%
Rio Grande	90%	90%	100%	90%	90%	85%	93%
South Platte	50%	80%	100%	50%	85%	50%	65%
Southwest	100%	100%	100%	80%	100%	100%	88%
Yampa-White	100%	100%	100%	50%	100%	100%	67%

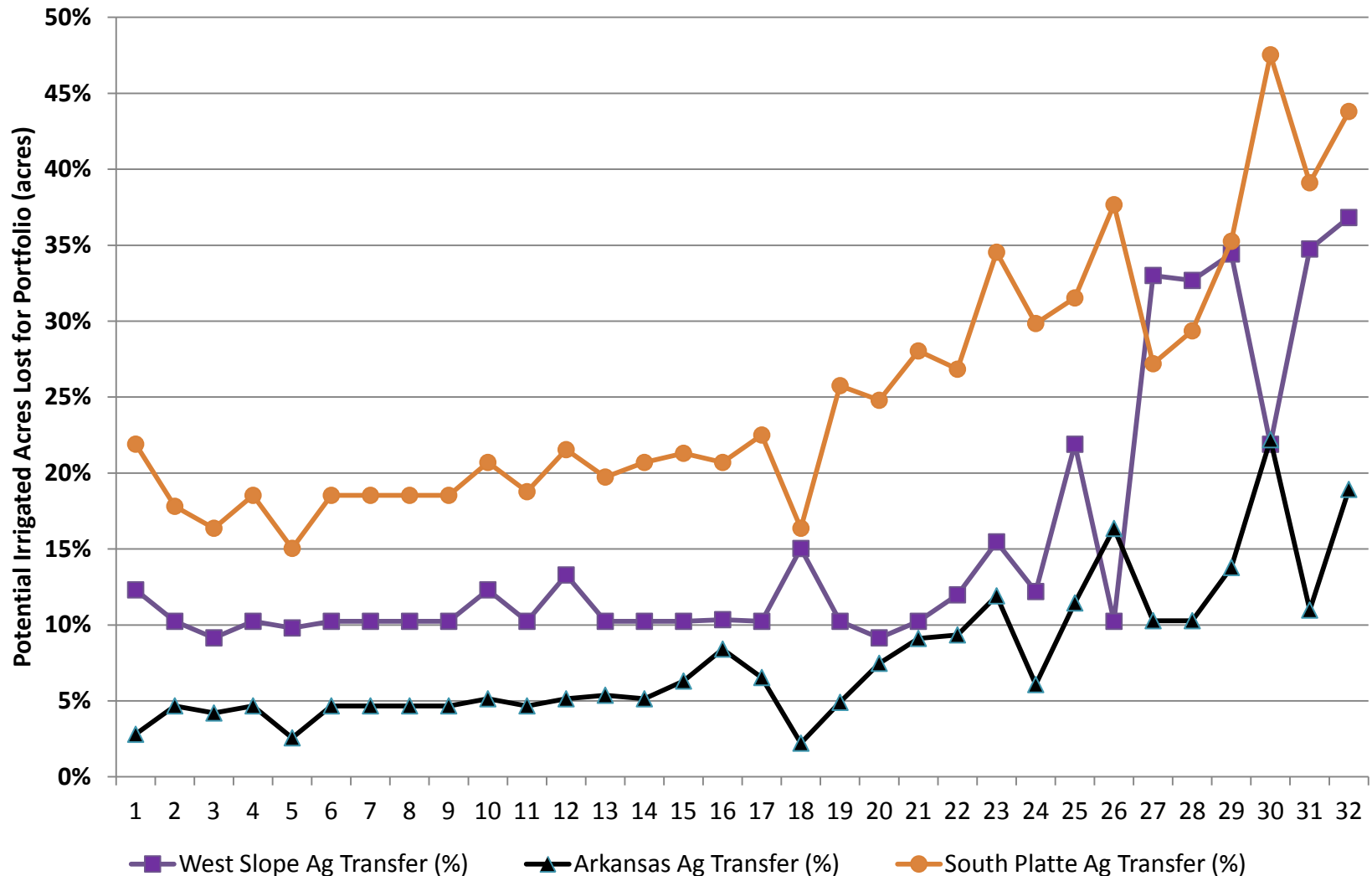
M&I conservation – 70% of roundtable portfolios used low to medium conservation strategy



Colorado River system - the majority of portfolios developed by the roundtables include development for both sides of the Divide



Agricultural transfer - the majority of portfolios developed by the roundtables minimize agricultural transfers in the future



**4 High Demand /
Low Supply Portfolios**

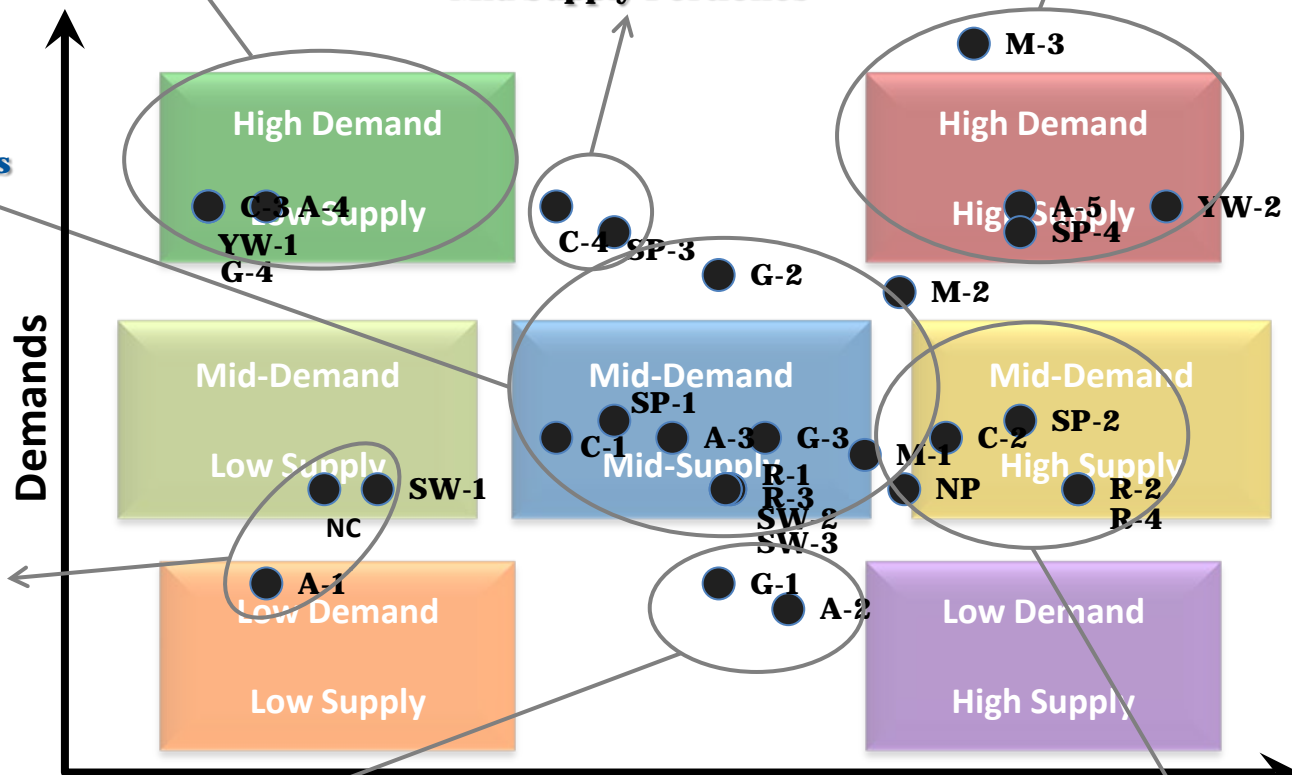
**2 High Demand /
Mid Supply Portfolios**

**5 High Demand /
High Supply Portfolios**

**11 Mid Demand /
Mid Supply Portfolios**

Demand Factors:

- M&I growth
- Energy demands
- **3 Additional Low Supply Portfolios**
- **CW Replacement**



CO River Supplies (Available and/or Developed)

CO River Supply Factors:

- Colorado River hydrologic variability
- Climate change
- Compact considerations

Summary scenarios based on roundtable's current portfolios

Scenario	Demands	IPP Yield Success	Conservation Savings	Colorado River System	Agricultural Transfers (% acres reduced)
1	Low Population Growth	80%	Low to Medium Strategy with no savings applied to M&I Gap	50,000 to 100,000 AFY	None beyond IPPs and urbanization
2	Moderate Population Growth	80%	Medium to High Strategy with 30% to 60% of savings applied to M&I Gap	80,000 to 100,000 AFY	West slope: none East Slope: small amount beyond IPPs and urbanization
3	Moderate Population Growth	80%	Low to Medium Strategy with little savings applied to M&I Gaps	150,000 to 300,000 AFY	None beyond IPPs and urbanization
4	High Population Growth	80%	Medium to High Strategy with 30% to 60% of savings applied to M&I Gap	0 AFY	West Slope: 15% to 35%; Arkansas: 5% to 20%; South Platte: 20% to 50%
5	High Population Growth	80%	Low to Medium Strategy with 30% to 60% of savings applied to M&I Gap	130,000 to 230,000 AFY	West Slope: 10% to 40%; Arkansas: 5% to 20%; South Platte: 20% to 45%



Basin Roundtable Summit Implementation Next Steps



Todd Doherty
March 1, 2012



SWSI 2010 Overall Recommendation (January 2011)

With the SWSI 2010 update, the CWCB has updated its analysis of the state's water supply needs. The CWCB, the IBCC, and basin roundtables should now enter an implementation phase to determine and pursue projects and methods to help meet the state's consumptive and nonconsumptive water supply needs. This will be accomplished through the implementation of the following recommendations by the CWCB.



Major tasks leading up to 2016

- Implement the 16 SWSI 2010 Recommendations
- Identification of and Implementation of Consumptive and Nonconsumptive Projects (grants and loans)
- Development of Implementation Plans for the Strategies (utilizing adaptive management)
- Evaluate SWSI 2016 Methodology (involvement of the CWCB, IBCC and roundtables)
- SWSI 2016 Development
- Finalize SWSI 2016 and Water Plan

Next Steps for the Basin Roundtables, CWCB, and IBCC

Basin Roundtables' Initial Work on Statewide Portfolios

Basin Roundtable Summit

Basin Roundtables Refine Statewide Portfolios

May IBCC Meeting

CWCB/IBCC Finalize Scenario Planning (Evaluation and Adaptive Management)

Basin Roundtable Feedback on Scenario Planning and Adaptive Management

Basin Roundtables work on near and long-term implementation actions

Utilize information to develop Governor's Water Plan, SWSI 2016, and inform policy and intrastate discussions

CWCB Technical Assistance for Implementation

CWCB and roundtables work together to identify next steps for their priority projects and methods



Develop next steps based on support project and method implementation



Complete technical work identified in next steps



Documentation that could be used in CWCB Grant and Loan Programs

Opportunities to move consumptive and nonconsumptive projects and methods forward in the short-term

Workshop → Roundtable

- Project and Method Prioritization
- CWCB Grant and Loan Program Review
- Use CWCB consultant funds to help get projects to next stage
- Select projects
- Work to fund projects (and leverage those funds)

Multi-Purpose Projects

- Work with water providers up front
- Identify opportunities to benefit many purposes:
 - Environmental
 - Recreation
 - Agriculture
 - Compacts
 - Municipal/Industrial

Implementing Projects and Methods

Revisit IPP lists for M&I, Agriculture,
and Nonconsumptive

Identify what projects many need
technical assistance

Complete technical assistance needed
to move project to next level of
implementation

Work to identify funding sources—
leverage source wherever possible



Two Concurrent Paths Forward

1. Initiate Consumptive and Nonconsumptive Projects:

Determine how to implement selected consumptive and nonconsumptive projects or methods that meet identified needs by the end of 2012

2. Develop Projects and Methods Implementation Plan: Suggest and provide advice on projects and methods that can fill consumptive and nonconsumptive gaps in a strategic manner. Include:

- Initial cost estimates
- Promote multi-beneficial projects
- Potential partners and project proponents