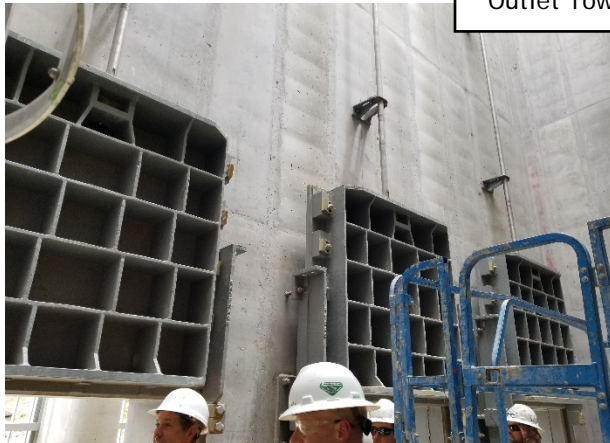


Outlet Tower and Gates



Construction of Mud Mat and Outlet Terminal Structure



Project Description

Adobe Creek Reservoir (also known as Blue Lake) is owned by the Fort Lyon Canal Company (Company). The original dam was a 32-foot-high, high hazard dam that impounds approximately 77,400 acre-feet of active storage and 4,292 acre feet of dead storage. The Adobe Creek Reservoir water is used to irrigate approximately 93,000 acres of land in Bent, Otero, and Prowers County. The new dam height is 32.3 feet and has a crest length of 7,375 feet.

A storage restriction was issued by the Dam Safety Branch of the Office of the State Engineer on May 5, 2017 due to adverse seepage conditions and outlet deficiencies in the dam's foundation and deteriorated conditions in the 112-year-old, vitrified clay outlet works. Through this loan, the Company constructed new outlet works and seepage control systems in Adobe Creek Dam to regain the approximately 32,560 acre-feet of storage that was lost due to the storage restriction.

Construction was complete in 2019 with temporary storage approval in June 2019 and a Final Acceptance of Construction by Colorado Dam Safety in November 2019.

P R O J E C T D A T A			
Sponsor: Fort Lyon Canal Company		County: Bent	Water Source: Arkansas River
Type of Project: Dam Rehabilitation			Board Approval Date: September 2017
Terms of Loan: 1.50% for 40 years		(Original) \$8,181,000	(Final) \$8,053,081.83
Terms of WSRF Grant:		(Original) \$1,100,000	(Final) \$1,071,714.28
Design Engineer: W.W.Wheeler and Associates, Inc.			
Contractor: Moltz Construction, Inc.			