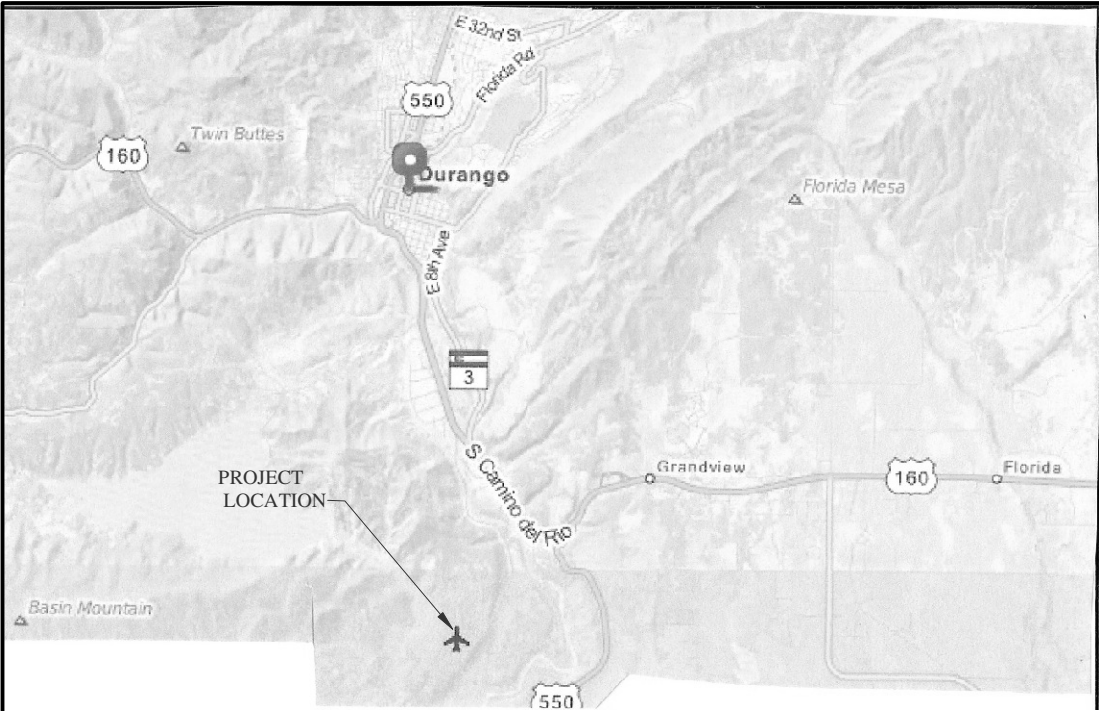


ANIMAS AIRPARK
PROPERTY OWNERS ASSOCIATION
WATER DISTRIBUTION SYSTEM
La Plata County, Colorado



LOCATION MAP
N.T.S.



VICINITY MAP
N.T.S.

SHEET DESCRIPTION

- 1.....GENERAL NOTES AND TYPE 'A' BLOWOFF DETAILS
- 2.....TRNCH AND BACKFILL DETAILS
- 3.....GATE VALVE AND FIRE HYDRANT DETAILS
- 4.....THRUST BLOCK DETAILS
- 5.....PLAN AND PROFILE STA. 5+00 TO STA. 15+00
- 6.....PLAN AND PROFILE STA. 15+00 TO STA. 25+00
- 7.....PLAN AND PROFILE STA. 25+00 TO STA. 35+00
- 8.....PLAN AND PROFILE STA. 35+00 TO STA. 44+00
- 9.....PLAN AND PROFILE STA. 44+00 TO STA. 54+42
- 10.....PLAN AND PROFILE FLIGHT LINE ROAD
- 11.....PLAN AND PROFILE WIND SOCK ROAD
- 12.....PLAN AND PROFILE TAIL DRAGGER LANE

CALL UTILITY NOTIFICATION
CENTER OF COLORADO
1-800-922-1987 OR (811)
CALL 3 BUSINESS DAYS PRIOR
TO ANY CONSTRUCTION.

DATE: 6/30/2014
DRAWN BY: MG
CHECKED BY: BS

SHEET
00 OF 12.

ANIMAS AIRPARK PROPERTY OWNERS ASSOCIATION
WATER DISTRIBUTION SYSTEM
COVERSHEET

REVISIONS		
NO.	DESCRIPTION	DATE

**HARRIS WATER
ENGINEERING INC.**
954 East Second Ave.
Durango, Co. 81303
970-259-1028

General Notes:

All materials and workmanship shall be in accordance with the City of Durango Development Standards for Public Improvements and Construction Specifications. When requirements in the construction specifications or design standards conflict the more stringent requirement shall apply.

The contractor is responsible for obtaining all required permits prior to the commencement of any work on the project.

An Excavation Permit for Work in the Public Ways is required for all work in the public right-of-way.

The contractor shall be responsible for notifying the owner /developer of any problems in conforming to the approved plans for any element of the proposed improvements prior to its construction.

The engineer shall be responsible during construction activities to resolve construction problems due to changed conditions or design errors encountered by the contractor during the progress of any portion of the proposed work. If, in the opinion of the Engineer or the Project Inspector, the modification proposed by the contractor to the approved plans involve significant changes to the character of the work or to future contiguous public or private improvements, the engineer shall be responsible for submitting revised plans to the appropriate agencies for approval prior to any further construction related to that portion of the work. Any improvements constructed not in accordance with the approved plans or the approved revised plans, shall be removed and the improvements shall be reconstructed according to the approved plans.

Underground utilities shown on these plans are from physical evidence on the surface and historic maps. The contractor shall be responsible for the horizontal and vertical location of all utilities prior to construction, including potholing if necessary. The contractor shall contact the appropriate agencies for location of all underground utilities at least 72 hours prior to commencement of construction.

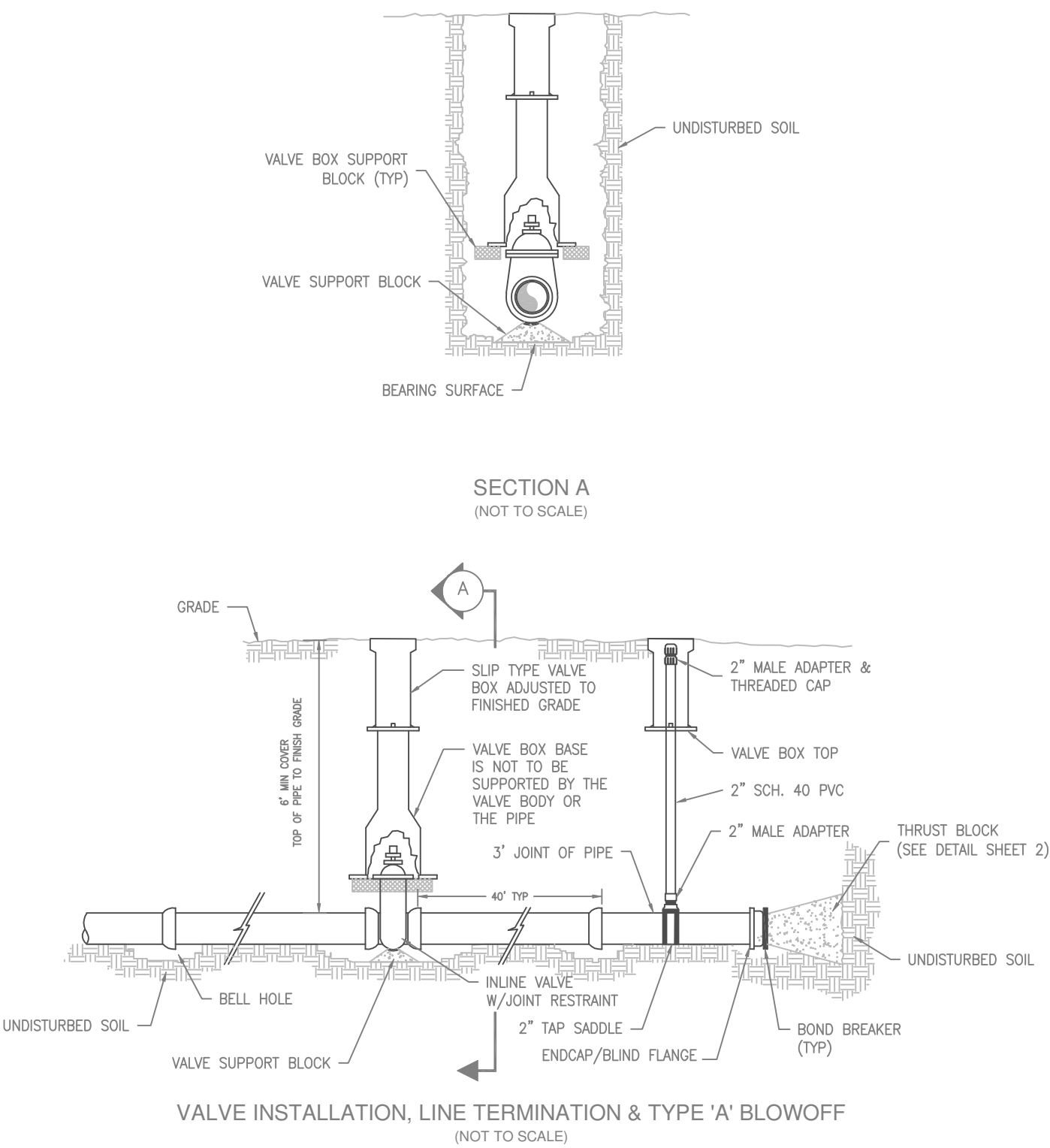
The contractor shall be responsible for providing a copy of "AS Constructed" plans to the appropriate agencies prior to final acceptance of work.

The contractor shall notify the Inspector at least 24 hours prior to desired inspection.

The contractor shall reset all Survey Monuments disturbed during construction within 60 days of project completion.

The contractor shall be solely and completely responsible for conditions at and adjacent to the job site, including safety of all persons and property during performance of the work. This requirement shall apply continuously and not limited to normal working hours.

The duty of the City, Owner or Engineer to conduct construction review of the contractor's performance is not intended to include review of the adequacy of the contractor's safety measures in, on, or near the construction site. Field conditions may exist that require changes to the drawings. If such conditions are encountered, standard engineering practices shall be followed.

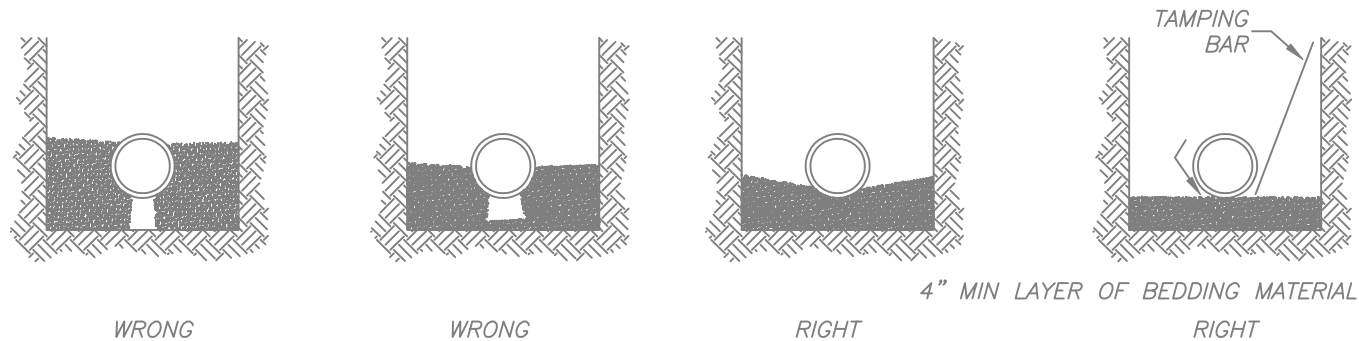


DATE: 6/30/2014
DRAWN BY: MG
CHECKED BY: BS
SHEET
01 OF 12

ANIMAS AIRPARK PROPERTY OWNERS ASSOCIATION
WATER DISTRIBUTION SYSTEM
GENERAL NOTES AND TYPE 'A' BLOWFF

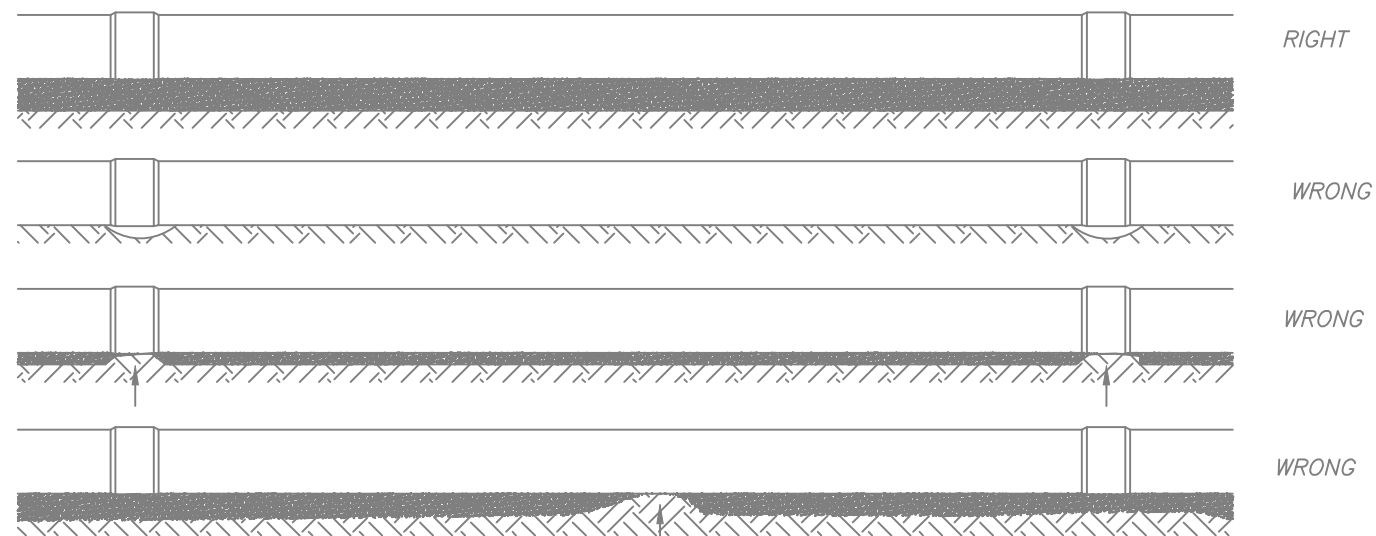
REVISIONS		
NO.	DESCRIPTION	DATE

HARRIS WATER
ENGINEERING INC.
954 East Second Ave.
Durango, Co. 81303
970-259-1028

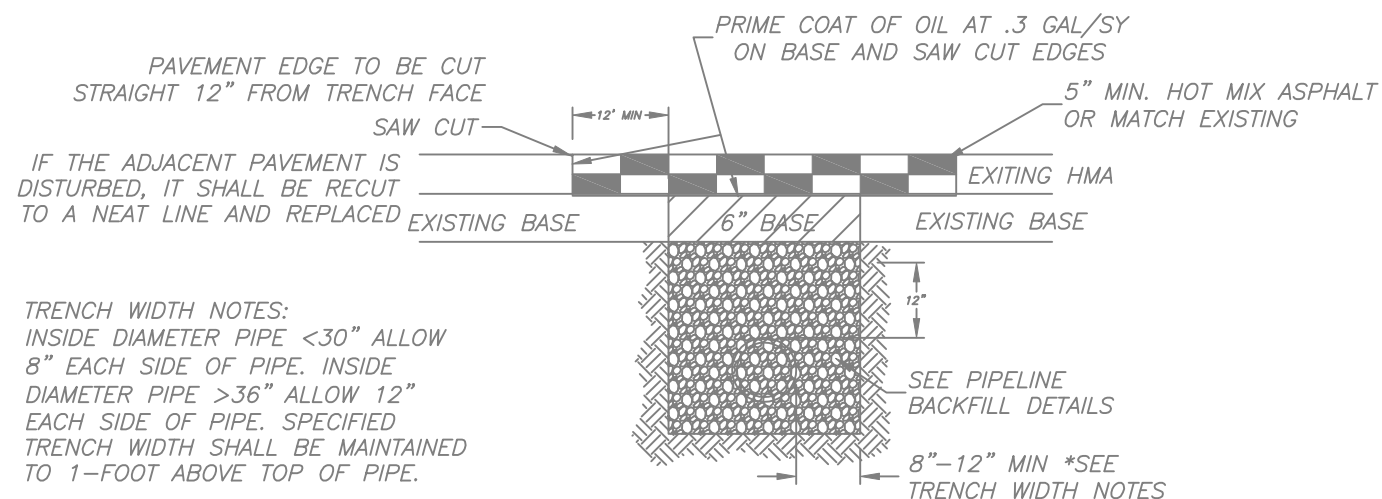


BEDDING COMPACTION DETAIL

UNIFORM AND CONTINUOUS

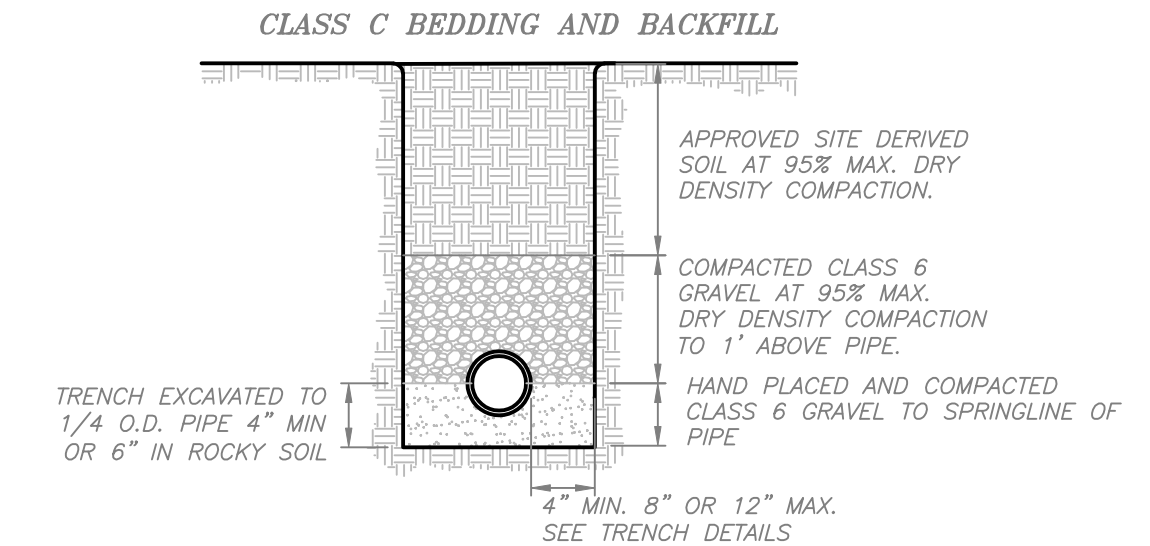
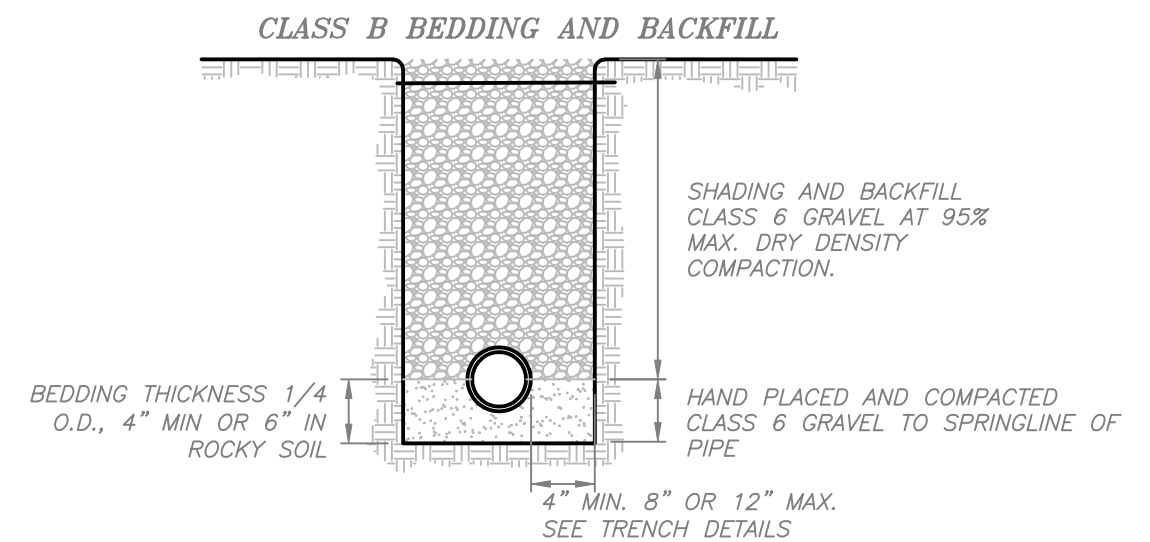
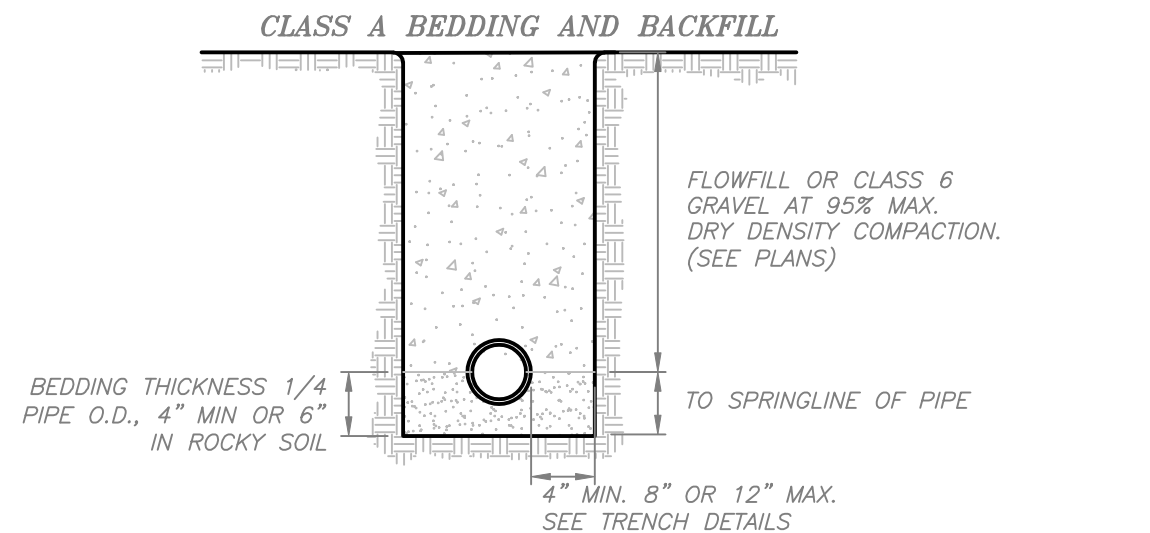


TRENCH BOTTOM DETAIL



STANDARD TRENCH DETAIL

PER CITY OF DURANGO STANDARDS



BEDDING AND BACKFILL DETAIL

*PER CITY OF DURANGO STANDARDS

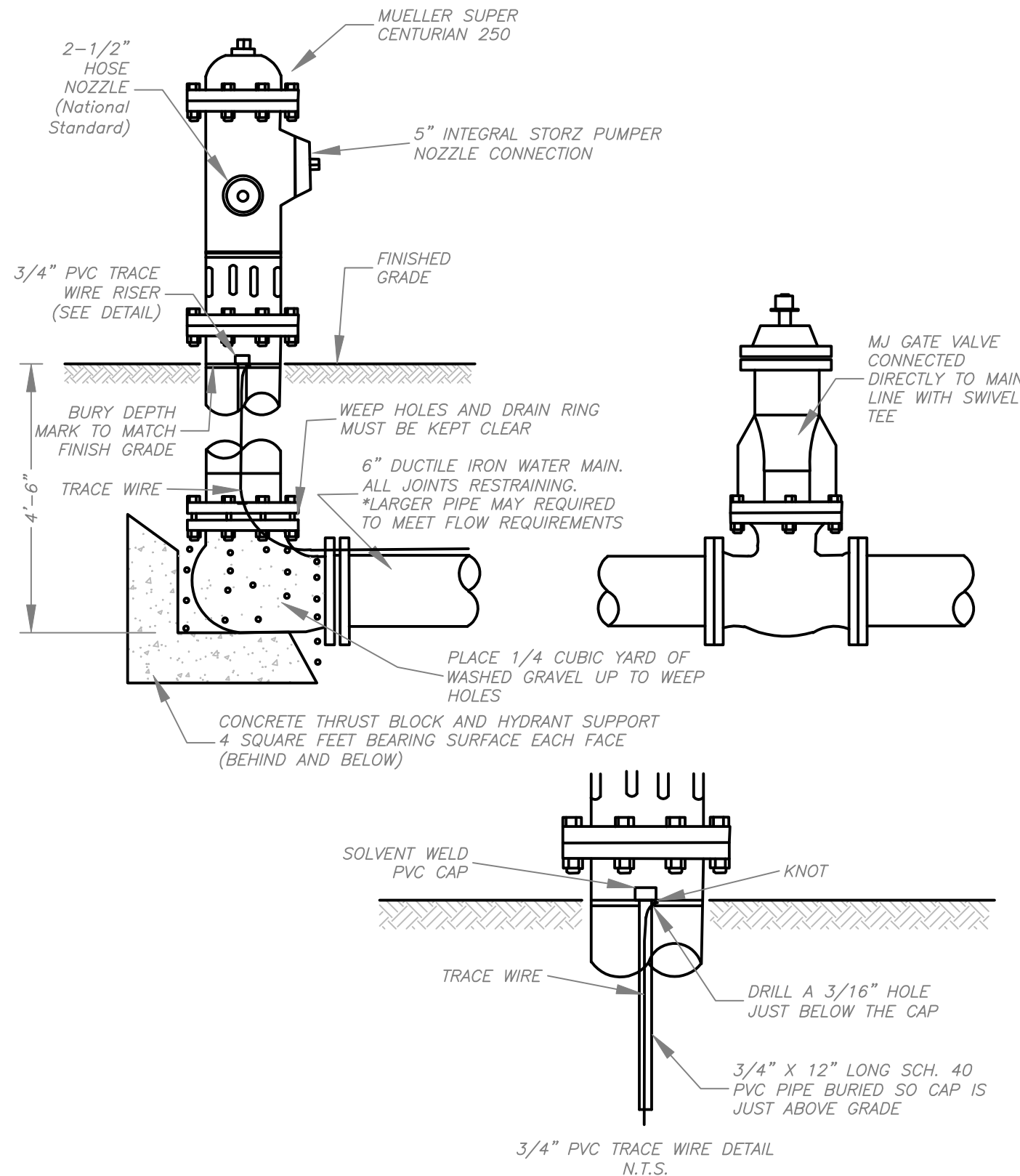
- NOTES:
1. DENSITY TESTING PER AASHTO - T180
 2. CLASS 6 BEDDING IS NOT APPLICABLE FOR AREAS TO BE PAVED.
 3. PIPELINE TRENCHES WITHIN EXISTING PAVED AREAS LESS THAN 10' IN LENGTH SHALL USE CLASS A BEDDING AND BACKFILL.
 4. SEE TRENCHING DETAIL FOR ADDITIONAL REQUIREMENTS.

DATE: 6/30/2014
DRAWN BY: MG
CHECKED BY: BS
SHEET 02 OF 12

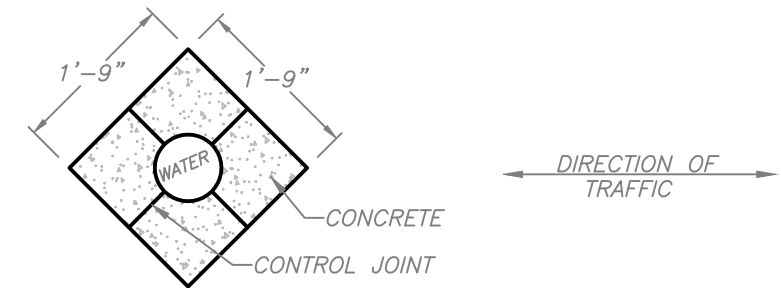
ANIMAS AIRPARK PROPERTY OWNERS ASSOCIATION
WATER DISTRIBUTION SYSTEM
TRENCH AND BACKFILL DETAILS

REVISIONS		
NO.	DESCRIPTION	DATE

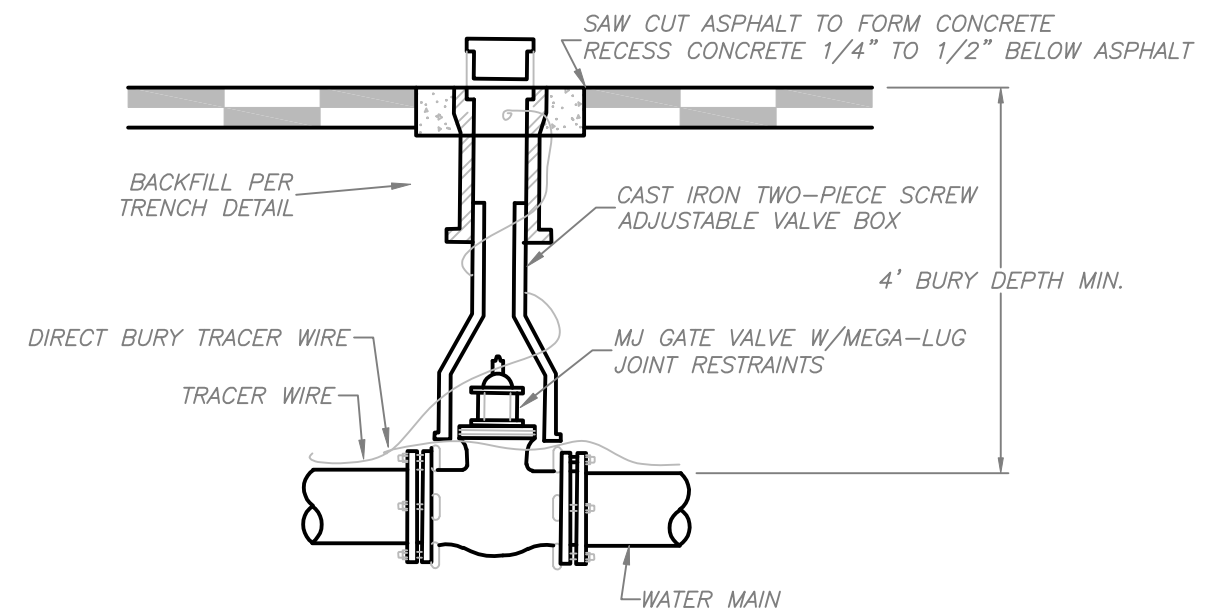
HARRIS WATER ENGINEERING INC.
954 East Second Ave.
Durango, Co. 81303
970-259-1028



*PER CITY OF DURANGO STANDARDS



PLAN VIEW @ STREET LEVEL



WATER VALVE INSTALLATION DETAIL

NOTES:

1. VALVES LARGER THAN 12" ARE TO BE BUTTERFLY VALVES.
2. VALVE STEM EXTENSIONS ARE REQUIRED AT LOCATIONS WHERE BURY DEPTH IS 5'-6" OR GREATER. EXTENSION LENGTH SHALL MATCH THE DIFFERENCE BETWEEN BURY DEPTH AND 4'.

*PER CITY OF DURANGO STANDARDS

DATE: 6/30/2014
DRAWN BY: MG
CHECKED BY: BS
SHEET 03 OF 12

ANIMAS AIRPARK PROPERTY OWNERS ASSOCIATION
WATER DISTRIBUTION SYSTEM
GATE VALVE AND RESTRAINED PIPE DETAIL;S

REVISIONS		
NO.	DESCRIPTION	DATE

HARRIS WATER ENGINEERING INC.
954 East Second Ave.
Durango, Co. 81303
970-259-1028

- NOTES:
- 1. DOWNWARD VERTICAL BEND DETAIL IS ONLY APPLICABLE FOR BENDS OF 45° OR LESS. MINIMUM 4' BURY DEPTH APPLIES.
 - 2. DIMENSION TO MATCH CALCULATED BEARING AREA. WIDTH TO EQUAL LENGTH OR TRENCH WIDTH WHICHEVER IS GREATER.
 - 3. GRADE 40 REBAR BENT FOR 3" CLEARANCE OVER PIPE AND 6" CLEARANCE ALONG BOTTOM OF CONCRETE. USE EQUIVALENT OF 1 #4 REBAR FOR EVERY 8 S.F. OF CALCULATED BEARING AREA, 2 BARS MINIMUM.

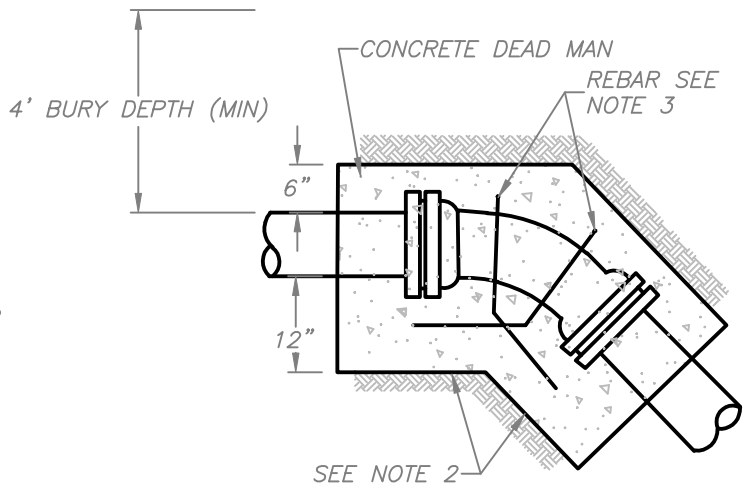
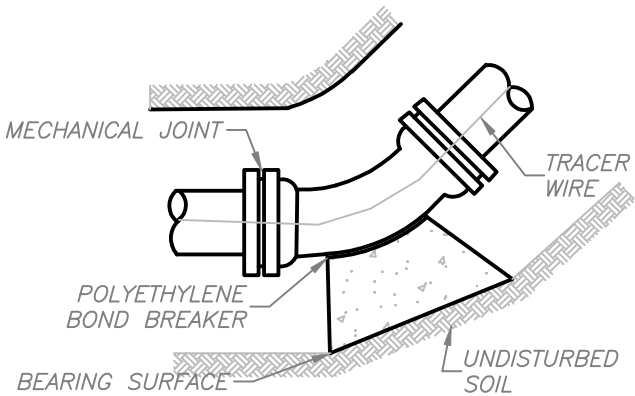


TABLE FOR CONCRETE THRUST
BLOCK BEARING FACTOR

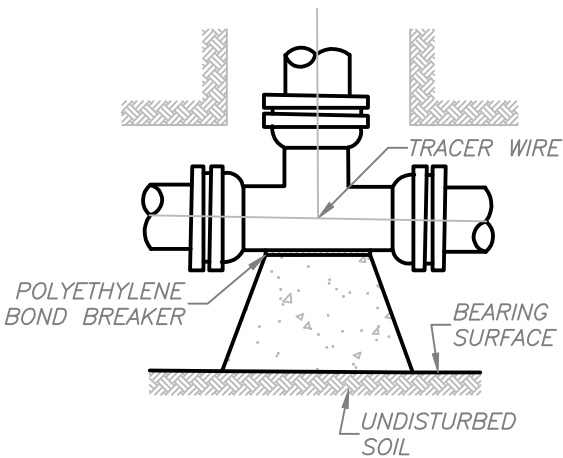
SIZE OF PIPE	BENDS				TEES AND CAPS
	90°	45°	22.5°	11.25°	
6"	40	22	11	6	28
8"	71	38	20	10	50
10"	111	60	31	15	79
12"	160	87	44	22	113
14"	218	118	60	30	154
16"	284	154	78	39	201
18"	360	195	99	50	254
20"	444	240	123	62	314
22"	538	291	148	75	380
24"	640	346	177	89	452
30"	1000	541	276	139	707
36"	1439	779	397	200	1018

$$\text{BEARING AREA (SF)} = \text{BEARING FACTOR} \times \text{SPECIFIED TEST PRESSURE (PSI) SOIL CAPACITY (PSF)}$$

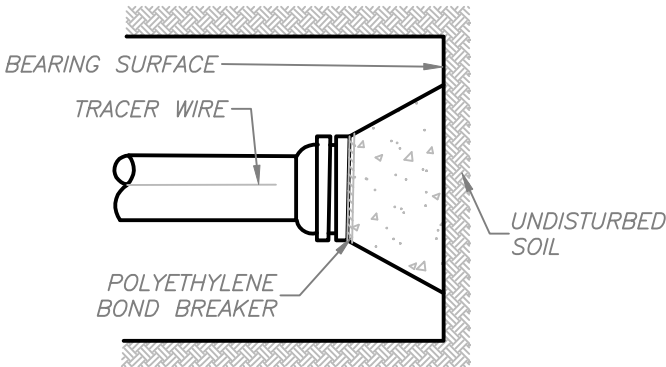
*PER CITY OF DURANGO STANDARDS



11 1/4;22 1/2;45° AND 90° BENDS



TEE



DEAD END

- NOTES:
- 1. LENGTH OF BEARING AREA TO APPROXIMATE HEIGHT OF BEARING AND BE CENTERED WITH THE PIPE.
 - 2. DETAIL APPLICABLE WHERE STANDARD TRENCH SIDE CLEARANCES ARE PROVIDED AT THRUST BLOCK LOCATION.
 - 3. MEGA-LUG JOINT RESTRAINTS ARE REQUIRED AT ALL FITTING JOINTS.
 - 4. ALL FITTINGS REQUIRING THRUST BLOCKS SHALL BE WRAPPED WITH POLYETHYLENE ENCASEMENT MATERIAL. CONCRETE SHALL NOT BEAR ON BOLTS OF MECHANICAL JOINT FITTINGS.

*PER CITY OF DURANGO STANDARDS

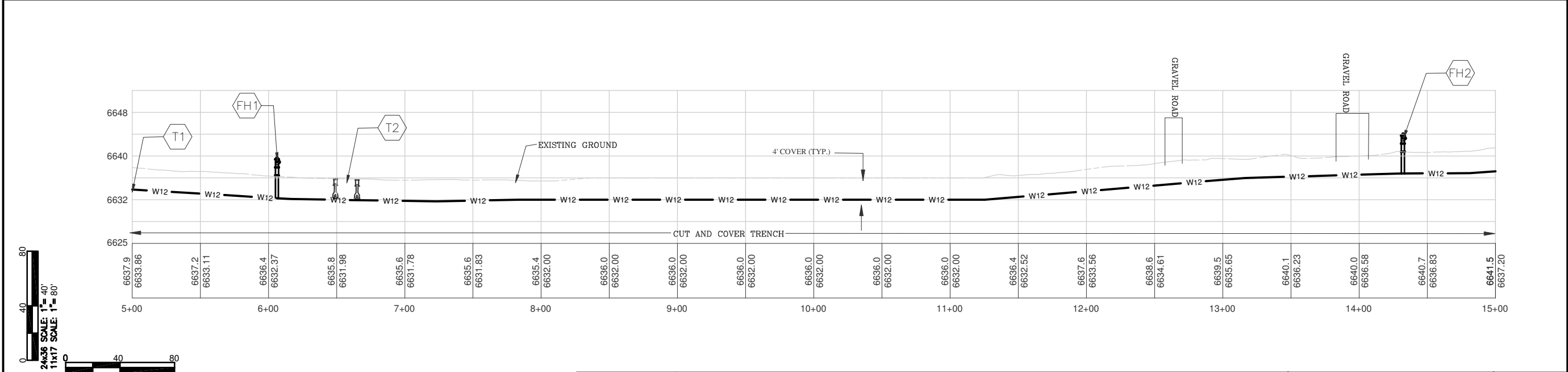
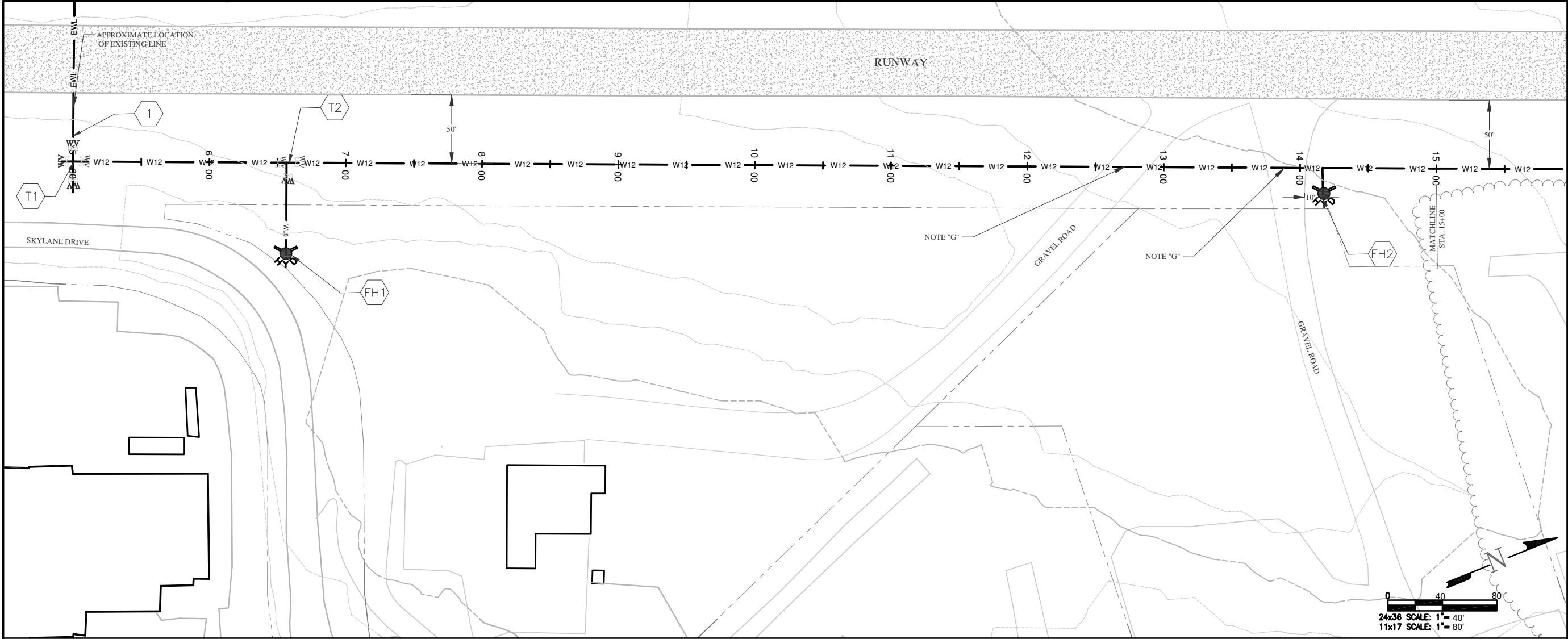
DATE: 6/30/2014
DRAWN BY: MG
CHECKED BY: BS

SHEET
04 OF 12

ANIMAS AIRPARK PROPERTY OWNERS ASSOCIATION
WATER DISTRIBUTION SYSTEM
THRUST BLOCK DETAILS

REVISIONS		
NO.	DESCRIPTION	DATE

HARRIS WATER
ENGINEERING INC.
954 East Second Ave.
Durango, Co. 81303
970-259-1028



KEY NOTES

1 CONNECT TO EXISTING LINE AND BEGIN 12" WATERLINE (APPROX. 25' OF 12" LINE FROM EXISTING TO STA. 5+00 WILL BE REQUIRED).

FH1 STA. 5+25 INSTALL FIRE HYDRANT TO WITHIN 10' OF SKYLINE DRIVE PER DETAIL SHEET 4.

T1 INSTALL 12x12x12 CROSS WITH 12" VALVES ON NORTH, WEST SOUTH LEGS (PER DETAIL SHEET 3), 12" CAP ON SOUTH END, AND 12"x8" REDUCER WITH 8" VALVE ON EAST LEG WITH 8" CAP. INSTALL LOCATION MARKERS ON SOUTH AND EAST LEGS .

T2 ~~INSTALL 12x12x8 TEE WITH VALVES PER DETAIL SHEET 3. CAP END AND INSTALL LOCATION MARKER~~

FH2 STA. 14+40 INSTALL FIRE HYDRANT PER DETAIL SHEET 4.

REDUCER REQUIRED

GENERAL NOTES

A ELEVATIONS ARE APPROXIMATE AND MAY NOT BE ACCURATE AT TIME OF CONSTRUCTION.

B STATIONING WILL BE SUBJECT TO ACTUAL FIELD CONDITIONS AND MAY VARY FROM THAT SHOWN.

C ALL FITTINGS ARE STANDARD UNLESS NOTED OTHERWISE. HORIZONTAL BENDS NOT SHOWN ARE TO BE PROVIDED AT NO EXTRA COST.

D ELEVATION CHANGES MAY NOT REQUIRE FITTINGS, CHECK USABLE PIPE BEND RADIUS. USABLE PIPE BEND RADIUS NOT TO EXCEED 75% OF MANUFACTURES RECOMMENDED ALLOWABLE.

E ALL LEGS OF WATER LINES AT VALVES SHALL HAVE MECHANICAL JOINT RESTRAINT (MJR) IN THE FORM OF MEGALUG 2000 SERIES PV MJR.

F PAVED ROAD CUTS TO BE FLOW FILLED TO WITHIN 10" OF TOP THEN 6" OF CLASS 6 AT 95% COMPACTION AND 4" OF HBP.

G GRAVEL ROADS TO BE BACKFILLED WITH CLASS 6 ENTIRE DEPTH IN 12" LIFTS AT 95% COMPACTION. .

LEGEND

— WATER VALVE

— PROPERTY LINES

— EWL — EXISTING WATERLINE

— W12 — 12" WATERLINE

— W8 — 8" WATERLINE

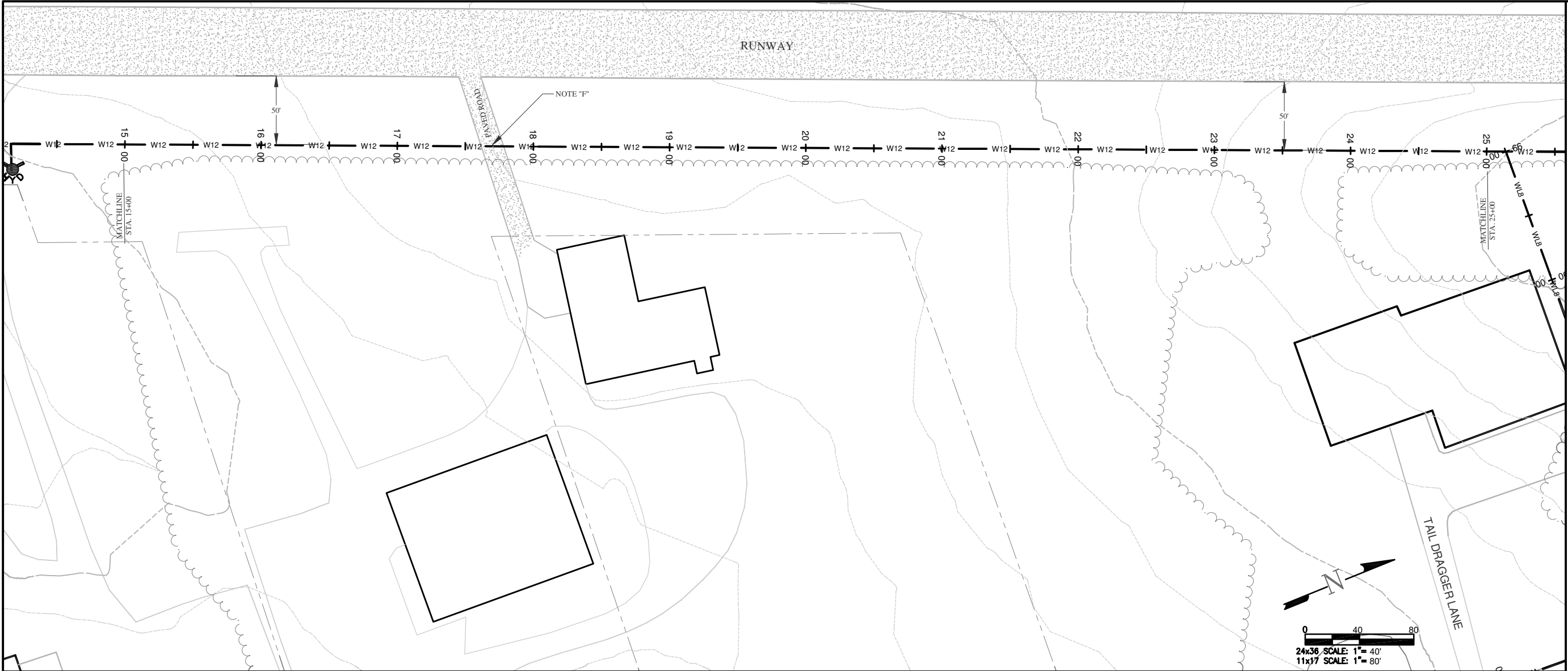
— EXISTING CONTOUR MINOR

— EXISTING CONTOUR MAJOR

— FIRE HYDRANT

— WETLANDS

— TREE LINE



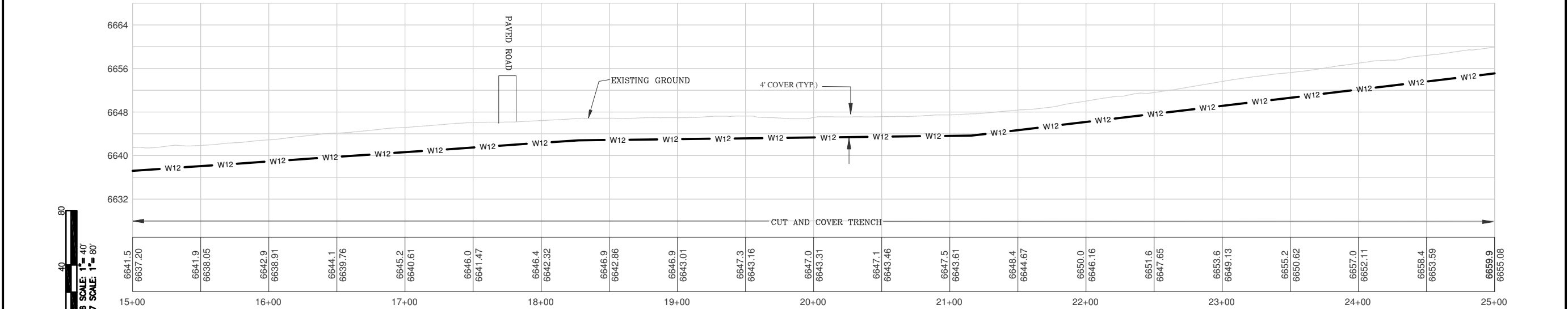
KEY NOTES

GENERAL NOTES

- A ELEVATIONS ARE APPROXIMATE AND MAY NOT BE ACCURATE AT TIME OF CONSTRUCTION.
- B STATIONING WILL BE SUBJECT TO ACTUAL FIELD CONDITIONS AND MAY VARY FROM THAT SHOWN.
- C ALL FITTINGS ARE STANDARD UNLESS NOTED OTHERWISE. HORIZONTAL BENDS NOT SHOWN ARE TO BE PROVIDED AT NO EXTRA COST.
- D ELEVATION CHANGES MAY NOT REQUIRE FITTINGS, CHECK USABLE PIPE BEND RADIUS. USABLE PIPE BEND RADIUS NOT TO EXCEED 75% OF MANUFACTURES RECOMMENDED ALLOWABLE.
- E ALL LEGS OF WATER LINES AT VALVES SHALL HAVE MECHANICAL JOINT RESTRAINT (MJR) IN THE FORM OF MEGALUG 2000 SERIES PV MJR.
- F PAVED ROAD CUTS TO BE FLOW FILLED TO WITHIN 10" OF TOP THEN 6" OF CLASS 6 AT 95% COMPACTION AND 4" OF HBP.
- G GRAVEL ROADS TO BE BACKFILLED WITH CLASS 6 ENTIRE DEPTH IN 12" LIFTS AT 95% COMPACTION.

LEGEND

- VALVE — WATER VALVE
- — — — — PROPERTY LINES
- — — — — EXISTING WATERLINE
- W12 — 12" WATERLINE
- W8 — 8" WATERLINE
- — — — — EXISTING CONTOUR MINOR
- — — — — EXISTING CONTOUR MAJOR
- — — — — FIRE HYDRANT
- — — — — WETLANDS
- — — — — TREE LINE



DATE: 6/30/2014
DRAWN BY: MG
CHECKED BY: BS

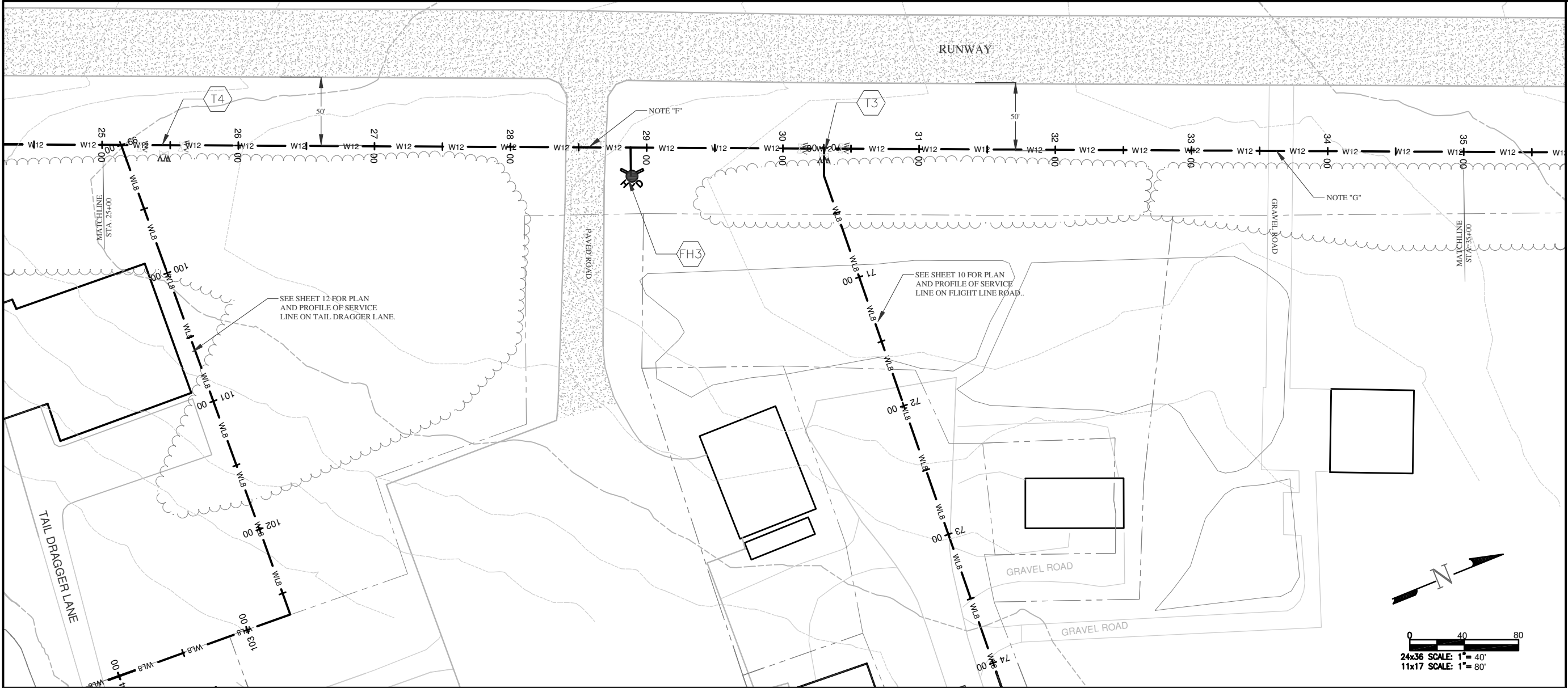
SHEET
06 OF 12

ANIMAS AIRPARK PROPERTY OWNERS ASSOCIATION
WATER DISTRIBUTION SYSTEM
PLAN AND PROFILE

REVISIONS		
NO.	DESCRIPTION	DATE

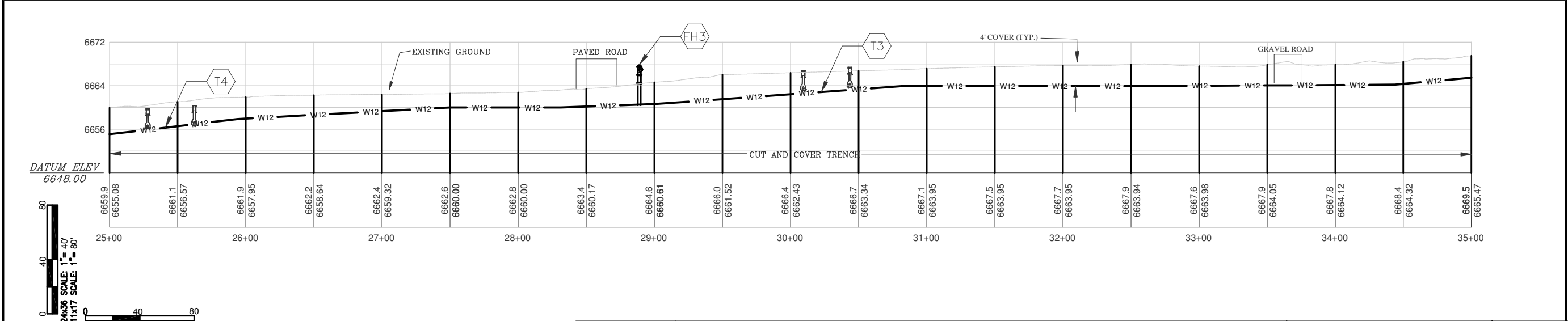
**HARRIS WATER
ENGINEERING INC.**
954 East Second Ave.
Durango, Co. 81303
970-259-1028

ELEVATIONS AND PROPERTY LINES DERIVED FROM CITY GIS MAPS AND ARE FOR INFORMATIONAL PURPOSES ONLY. FIELD CONDITIONS MAY VARY.



- KEY NOTES**
- FH3** INSTALL FIRE HYDRANT PER DETAILS SHEET 4.
 - T3** INSTALL 12"x12"x8" TEE WITH 2-12" VALVES AND 1-8" VALVE (PER DETAIL SHEET 3 FOR SERVICE LINE ON FLIGHT LINE ROAD.
 - T4** INSTALL 12"x12"x8" TEE WITH 2-12" VALVES AND 1-8" VALVE (PER DETAIL SHEET 3 FOR SERVICE LINE ON TAIL DRAGGER LANE.

- GENERAL NOTES**
- A** ELEVATIONS ARE APPROXIMATE AND MAY NOT BE ACCURATE AT TIME OF CONSTRUCTION.
 - B** STATIONING WILL BE SUBJECT TO ACTUAL FIELD CONDITIONS AND MAY VARY FROM THAT SHOWN.
 - C** ALL FITTINGS ARE STANDARD UNLESS NOTED OTHERWISE. HORIZONTAL BENDS NOT SHOWN ARE TO BE PROVIDED AT NO EXTRA COST.
 - D** ELEVATION CHANGES MAY NOT REQUIRE FITTINGS, CHECK USABLE PIPE BEND RADIUS. USABLE PIPE BEND RADIUS NOT TO EXCEED 75% OF MANUFACTURES RECOMMENDED ALLOWABLE.
 - E** ALL LEGS OF WATER LINES AT VALVES SHALL HAVE MECHANICAL JOINT RESTRAINT (MJR) IN THE FORM OF MEGALUG 2000 SERIES PV MJR.
 - F** PAVED ROAD CUTS TO BE FLOW FILLED TO WITHIN 10" OF TOP THEN 6" OF CLASS 6 AT 95% COMPACTION AND 4" OF HBP.
 - G** GRAVEL ROADS TO BE BACKFILLED WITH CLASS 6 ENTIRE DEPTH IN 12" LIFTS AT 95% COMPACTION. .



- LEGEND**
- WATER VALVE
 - PROPERTY LINES
 - EXISTING WATERLINE
 - EWL
 - 12" WATERLINE
 - 8" WATERLINE
 - EXISTING CONTOUR MINOR
 - EXISTING CONTOUR MAJOR
 - FIRE HYDRANT
 - WETLANDS
 - TREELINE

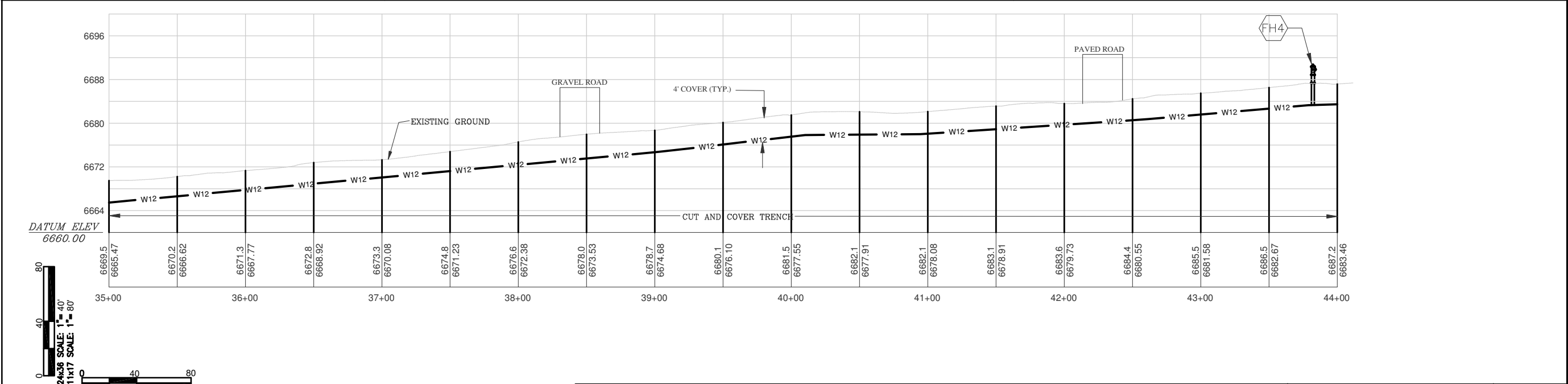
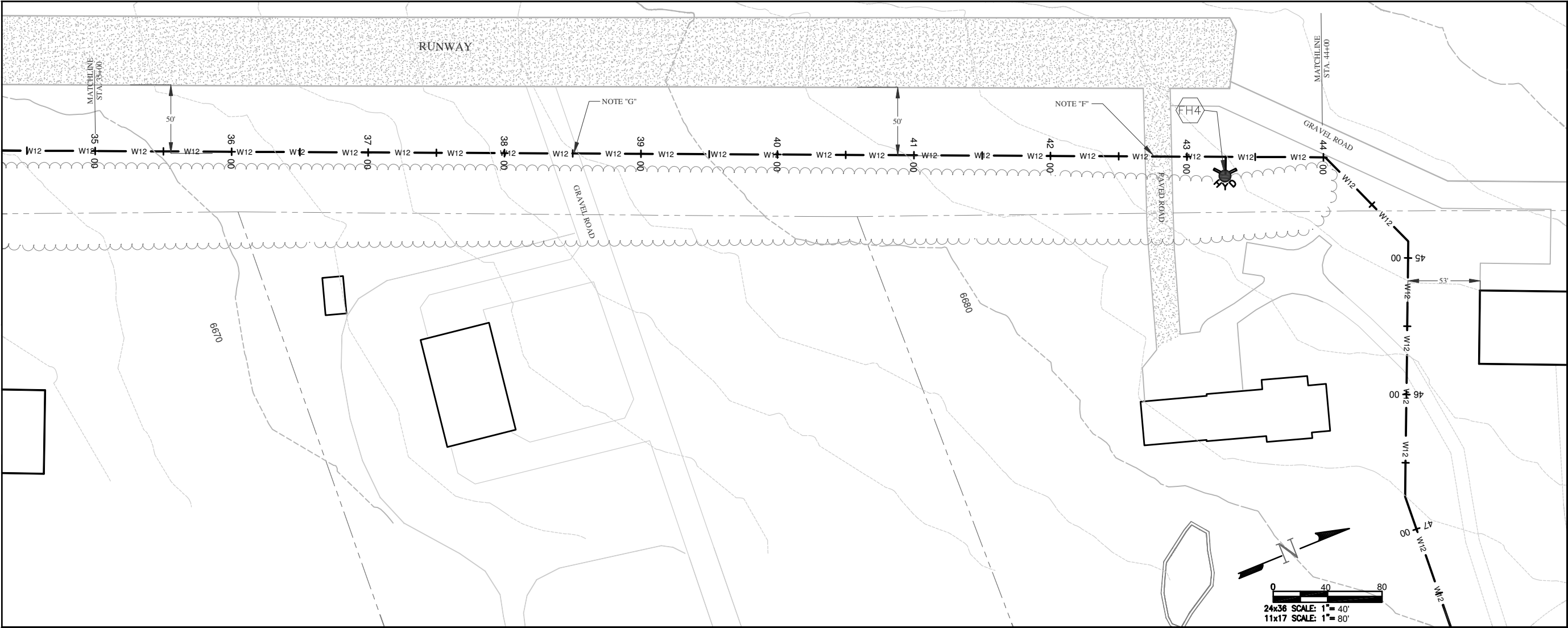
DATE: 6/30/2014
DRAWN BY: MG
CHECKED BY: BS
SHEET
07 OF 12

ANIMAS AIRPARK PROPERTY OWNERS ASSOCIATION
WATER DISTRIBUTION SYSTEM
PLAN AND PROFILE

REVISIONS		
NO.	DESCRIPTION	DATE

HARRIS WATER ENGINEERING INC.
954 East Second Ave.
Durango, Co. 81303
970-259-1028

ELEVATIONS AND PROPERTY LINES DERIVED FROM CITY GIS MAPS AND ARE FOR INFORMATIONAL PURPOSES ONLY FIELD CONDITIONS MAY VARY.



KEY NOTES

FH4

STA. 43+25 INSTALL FIRE HYDRANT PER
DETAIL SHEET 4.

GENERAL NOTES

A

ELEVATIONS ARE APPROXIMATE AND
MAY NOT BE ACCURATE AT TIME OF
CONSTRUCTION.

B

STATIONING WILL BE SUBJECT TO
ACTUAL FIELD CONDITIONS AND MAY
VARY FROM THAT SHOWN.

C

ALL FITTINGS ARE STANDARD UNLESS
NOTED OTHERWISE. HORIZONTAL BENDS
NOT SHOWN ARE TO BE PROVIDED AT NO
EXTRA COST.

D

ELEVATION CHANGES MAY NOT REQUIRE
FITTINGS, CHECK USABLE PIPE BEND
RADIUS. USABLE PIPE BEND RADIUS NOT
TO EXCEED 75% OF MANUFACTURES
RECOMMENDED ALLOWABLE.

E

ALL LEGS OF WATER LINES AT VALVES
SHALL HAVE MECHANICAL JOINT
RESTRAINT (MJR) IN THE FORM OF
MEGALUG 2000 SERIES PV MJR.

F

PAVED ROAD CUTS TO BE FLOW FILLED
TO WITHIN 10" OF TOP THEN 6" OF CLASS 6
AT 95% COMPACTION AND 4" OF HBP.

G

GRAVEL ROADS TO BE BACKFILLED WITH
CLASS 6 ENTIRE DEPTH IN 12" LIFTS AT
95% COMPACTION. .

LEGEND

WATER VALVE

PROPERTY LINES

EXISTING WATERLINE

12" WATERLINE

8" WATERLINE

EXISTING CONTOUR MINOR

EXISTING CONTOUR MAJOR

FIRE HYDRANT

WETLANDS

TREELINE

ELEVATIONS AND PROPERTY LINES DERIVED FROM CITY
GIS MAPS AND ARE FOR INFORMATIONAL PURPOSES
ONLY FIELD CONDITIONS MAY VARY.

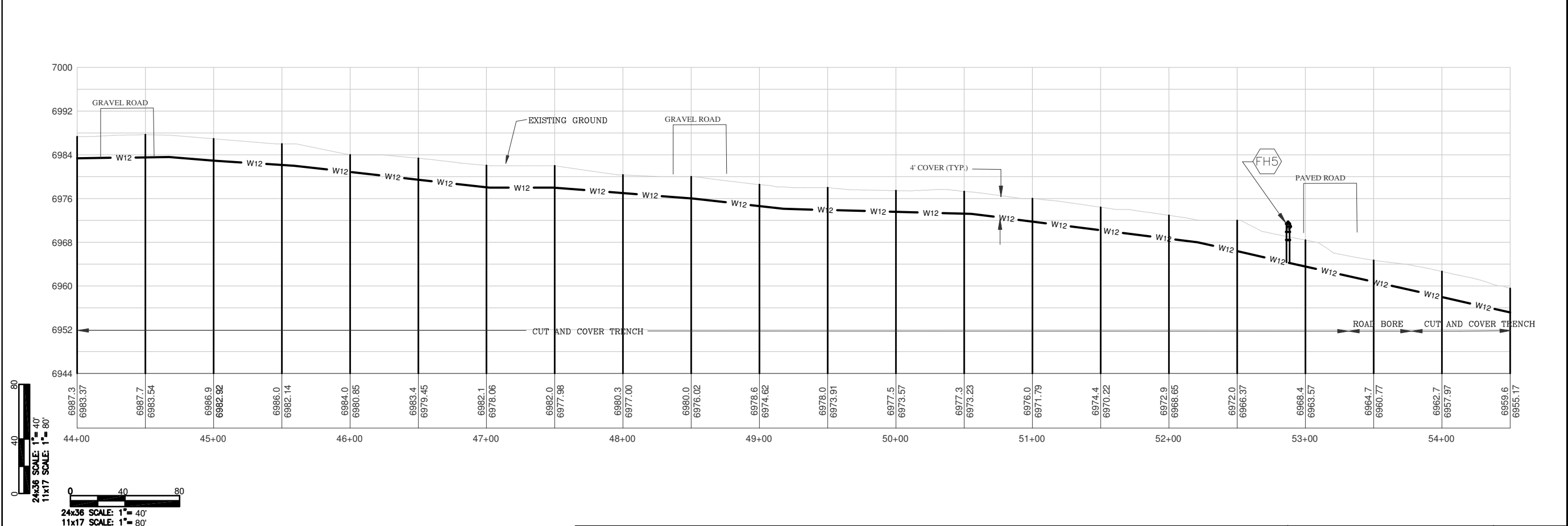
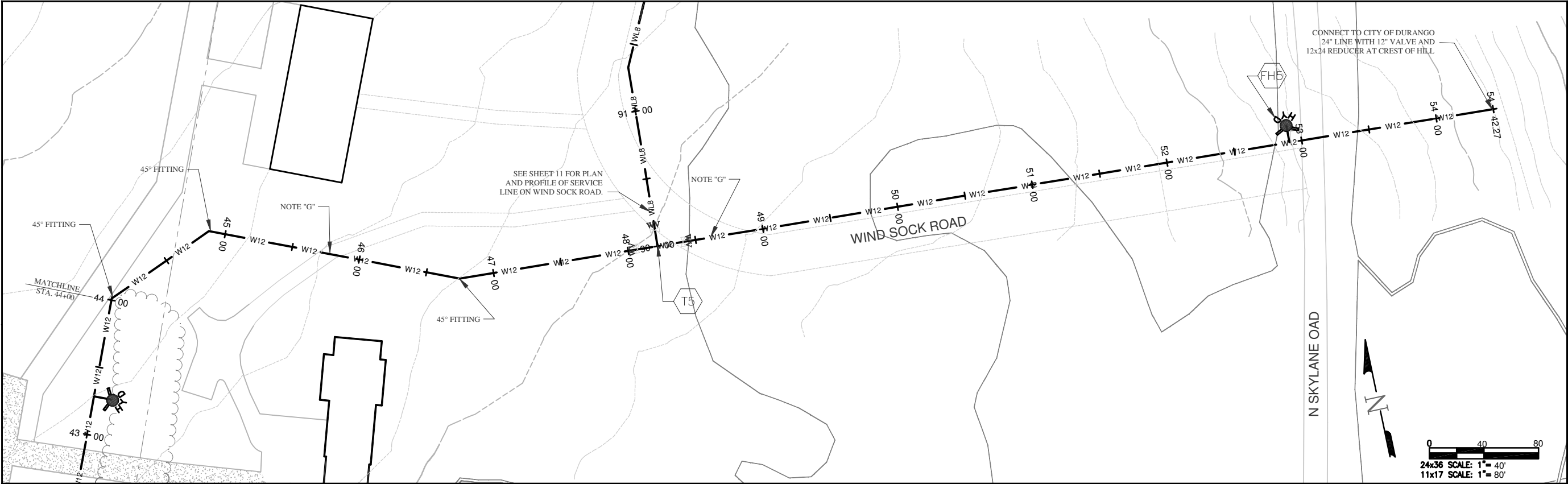
DATE: 6/30/2014
DRAWN BY: MG
CHECKED BY: BS
SHEET
08 OF 12.

ANIMAS AIRPARK PROPERTY OWNERS ASSOCIATION
WATER DISTRIBUTION SYSTEM
PLAN AND PROFILE

REVISIONS

NO.	DESCRIPTION	DATE

HARRIS WATER
ENGINEERING INC.
954 East Second Ave.
Durango, Co. 81303
970-259-1028



KEY NOTES

FH5 STA. 52+80 INSTALL FIRE HYDRANT PER DETAIL SHEET 4.

T5 INSTALL 12"x12"x8" TEE WITH 2-12" VALVES AND 1-8" VALVE (PER DETAIL SHEET 3 FOR SERVICE LINE ON WIND SOCK ROAD.

MAINTAIN MINIMUM 10' SEPARATION FROM SEWER/SEPTIC LINES.

GENERAL NOTES

A ELEVATIONS ARE APPROXIMATE AND MAY NOT BE ACCURATE AT TIME OF CONSTRUCTION.

B STATIONING WILL BE SUBJECT TO ACTUAL FIELD CONDITIONS AND MAY VARY FROM THAT SHOWN.

C ALL FITTINGS ARE STANDARD UNLESS NOTED OTHERWISE. HORIZONTAL BENDS NOT SHOWN ARE TO BE PROVIDED AT NO EXTRA COST.

D ELEVATION CHANGES MAY NOT REQUIRE FITTINGS, CHECK USABLE PIPE BEND RADIUS, USABLE PIPE BEND RADIUS NOT TO EXCEED 75% OF MANUFACTURES RECOMMENDED ALLOWABLE.

E ALL LEGS OF WATER LINES AT VALVES SHALL HAVE MECHANICAL JOINT RESTRAINT (MJR) IN THE FORM OF MEGALUG 2000 SERIES PV MJR.

F PAVED ROAD CUTS TO BE FLOW FILLED TO WITHIN 10" OF TOP THEN 6" OF CLASS 6 AT 95% COMPACTION AND 4" OF HBP.

G GRAVEL ROADS TO BE BACKFILLED WITH CLASS 6 ENTIRE DEPTH IN 12" LIFTS AT 95% COMPACTION. .

LEGEND

- WATER VALVE
- PROPERTY LINES
- EXISTING WATERLINE
- W12 12" WATERLINE
- WL8 8" WATERLINE
- EXISTING CONTOUR MINOR
- EXISTING CONTOUR MAJOR
- FIRE HYDRANT
- WETLANDS
- TREELINE

DATE: 6/30/2014

DRAWN BY: MG

CHECKED BY: BS

SHEET 09 OF 12

ANIMAS AIRPARK PROPERTY OWNERS ASSOCIATION

WATER DISTRIBUTION SYSTEM

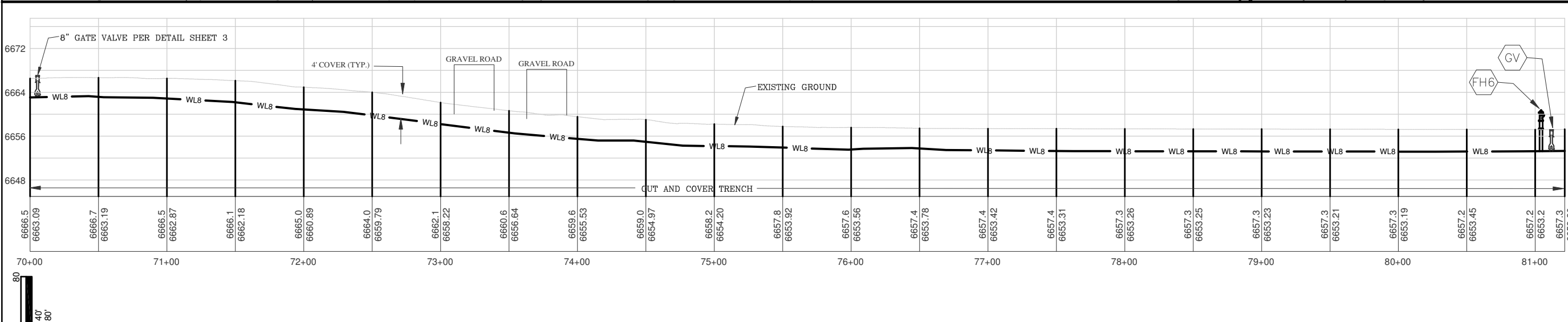
PLAN AND PROFILE

REVISIONS		
NO.	DESCRIPTION	DATE

HARRIS WATER ENGINEERING INC.

954 East Second Ave.
Durango, Co. 81303
970-259-1028

ELEVATIONS AND PROPERTY LINES DERIVED FROM CITY GIS MAPS AND ARE FOR INFORMATIONAL PURPOSES ONLY. FIELD CONDITIONS MAY VARY.



- KEY NOTES**
- STA. 81+15 INSTALL FIRE HYDRANT PER DETAIL SHEET 4.
 - INSTALL 8" GATE VALVE BETWEEN FIRE HYDRANT AND END CAP, SEE DETAILS SHEET 3.

- GENERAL NOTES**
- A ELEVATIONS ARE APPROXIMATE AND MAY NOT BE ACCURATE AT TIME OF CONSTRUCTION.
 - B STATIONING WILL BE SUBJECT TO ACTUAL FIELD CONDITIONS AND MAY VARY FROM THAT SHOWN.
 - C ALL FITTINGS ARE STANDARD UNLESS NOTED OTHERWISE. HORIZONTAL BENDS NOT SHOWN ARE TO BE PROVIDED AT NO EXTRA COST.
 - D ELEVATION CHANGES MAY NOT REQUIRE FITTINGS, CHECK USABLE PIPE BEND RADIUS. USABLE PIPE BEND RADIUS NOT TO EXCEED 75% OF MANUFACTURES RECOMMENDED ALLOWABLE.
 - E ALL LEGS OF WATER LINES AT VALVES SHALL HAVE MECHANICAL JOINT RESTRAINT (MJR) IN THE FORM OF MEGALUG 2000 SERIES PV MJR.
 - F PAVED ROAD CUTS TO BE FLOW FILLED TO WITHIN 10" OF TOP THEN 6" OF CLASS 6 AT 95% COMPACTION AND 4" OF HBP.
 - G GRAVEL ROADS TO BE BACKFILLED WITH CLASS 6 ENTIRE DEPTH IN 12" LIFTS AT 95% COMPACTION. .

- LEGEND**
- WATER VALVE
 - PROPERTY LINES
 - EXISTING WATERLINE
 - EWL
 - W12 12" WATERLINE
 - WL8 8" WATERLINE
 - EXISTING CONTOUR MINOR
 - EXISTING CONTOUR MAJOR
 - FIRE HYDRANT
 - WETLANDS
 - TREELINE

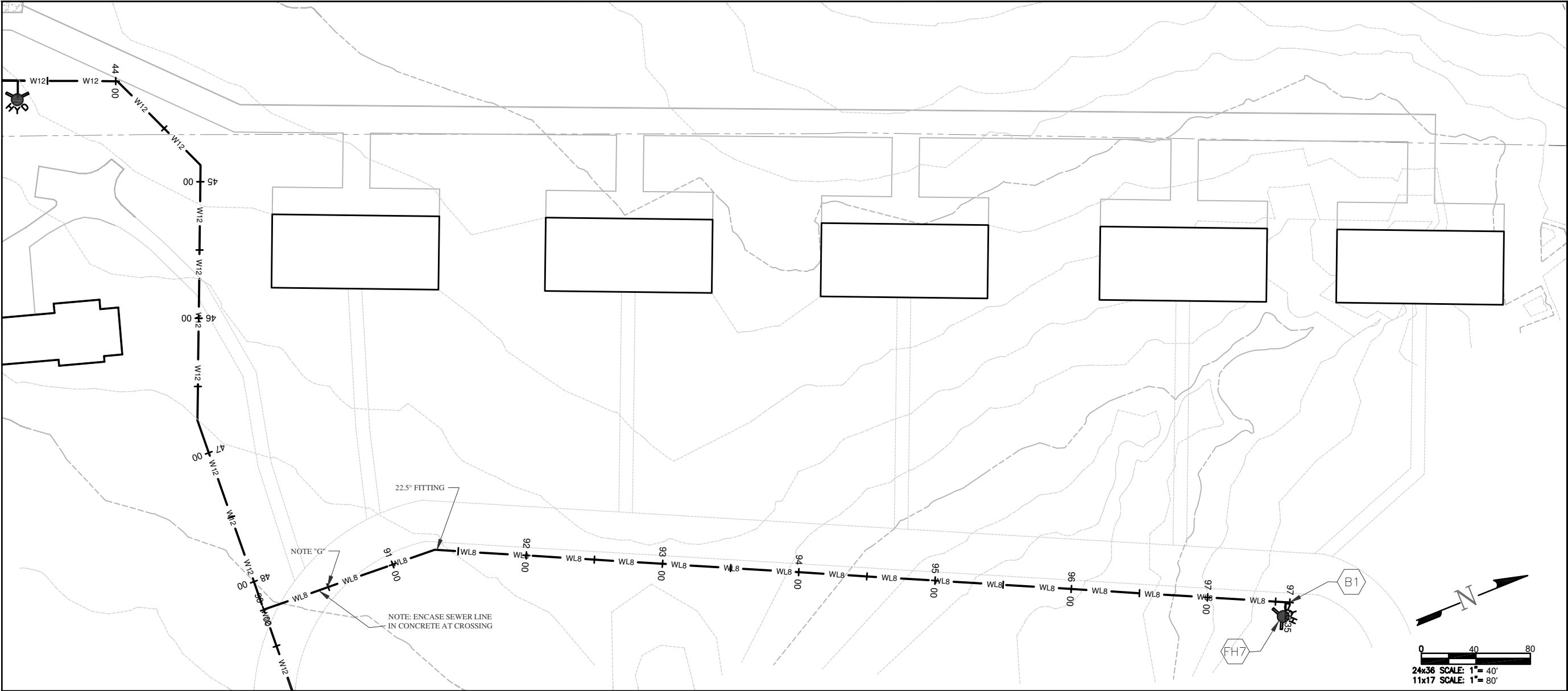
DATE: 6/30/2014
DRAWN BY: MG
CHECKED BY: BS
SHEET
10 OF 12

ANIMAS AIRPARK PROPERTY OWNERS ASSOCIATION
WATER DISTRIBUTION SYSTEM
PLAN AND PROFILE FLIGHT LINE ROAD

REVISIONS		
NO.	DESCRIPTION	DATE

HARRIS WATER ENGINEERING INC.
954 East Second Ave.
Durango, Co. 81303
970-259-1028

ELEVATIONS AND PROPERTY LINES DERIVED FROM CITY GIS MAPS AND ARE FOR INFORMATIONAL PURPOSES ONLY FIELD CONDITIONS MAY VARY.

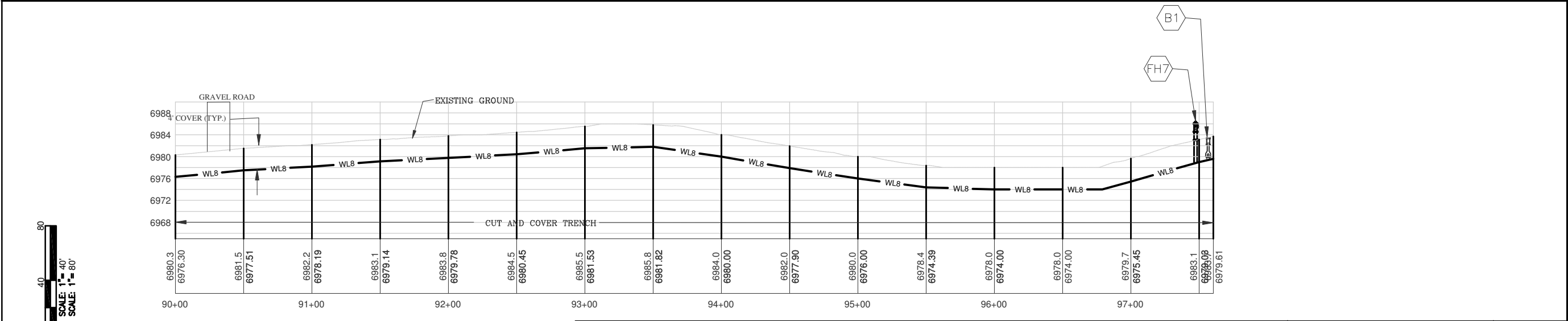


- KEY NOTES
- FH7

STA. 97+58 INSTALL FIRE HYDRANT PER
DETAIL SHEET 4.
- B1

INSTALL 8" GATE VALVE BETWEEN FIRE
HYDRANT AND END CAP. SEE DETAILS
SHEET 3.
- B1

TERMINATE W/TYPE 'A' BLOWOFF
SEE SHEET 2 FOR DETAILS.
- MAINTAIN MINIMUM 10' SEPARATION
FROM SEWER/SEPTIC LINES.
- GENERAL NOTES
- A ELEVATIONS ARE APPROXIMATE AND
MAY NOT BE ACCURATE AT TIME OF
CONSTRUCTION.
- B STATIONING WILL BE SUBJECT TO
ACTUAL FIELD CONDITIONS AND MAY
VARY FROM THAT SHOWN.
- C ALL FITTINGS ARE STANDARD UNLESS
NOTED OTHERWISE. HORIZONTAL BENDS
NOT SHOWN ARE TO BE PROVIDED AT NO
EXTRA COST.
- D ELEVATION CHANGES MAY NOT REQUIRE
FITTINGS, CHECK USABLE PIPE BEND
RADIUS. USABLE PIPE BEND RADIUS NOT
TO EXCEED 75% OF MANUFACTURES
RECOMMENDED ALLOWABLE.
- E ALL LEGS OF WATER LINES AT VALVES
SHALL HAVE MECHANICAL JOINT
RESTRAINT (MJR) IN THE FORM OF
MEGALUG 2000 SERIES PV MJR.
- F PAVED ROAD CUTS TO BE FLOW FILLED
TO WITHIN 10" OF TOP THEN 6" OF CLASS 6
AT 95% COMPACTION AND 4" OF HBP.
- G GRAVEL ROADS TO BE BACKFILLED WITH
CLASS 6 ENTIRE DEPTH IN 12" LIFTS AT
95% COMPACTION. .



- LEGEND
- WATER VALVE
- PROPERTY LINES
- EXISTING WATERLINE
- 12" WATERLINE
- 8" WATERLINE
- EXISTING CONTOUR MINOR
- EXISTING CONTOUR MAJOR
- FIRE HYDRANT
- WETLANDS
- TREELINE

0 40 80

24x36 SCALE: 1"= 40'

11x17 SCALE: 1"= 80'

0 40 80

24x36 SCALE: 1"= 40'

11x17 SCALE: 1"= 80'

ELEVATIONS AND PROPERTY LINES DERIVED FROM CITY
GIS MAPS AND ARE FOR INFORMATIONAL PURPOSES
ONLY FIELD CONDITIONS MAY VARY.

DATE: 6/30/2014

DRAWN BY: MG

CHECKED BY: BS

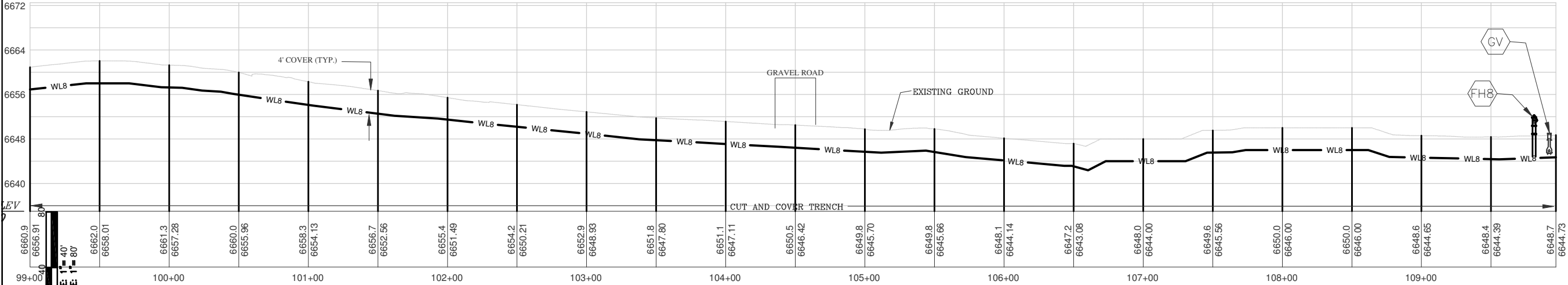
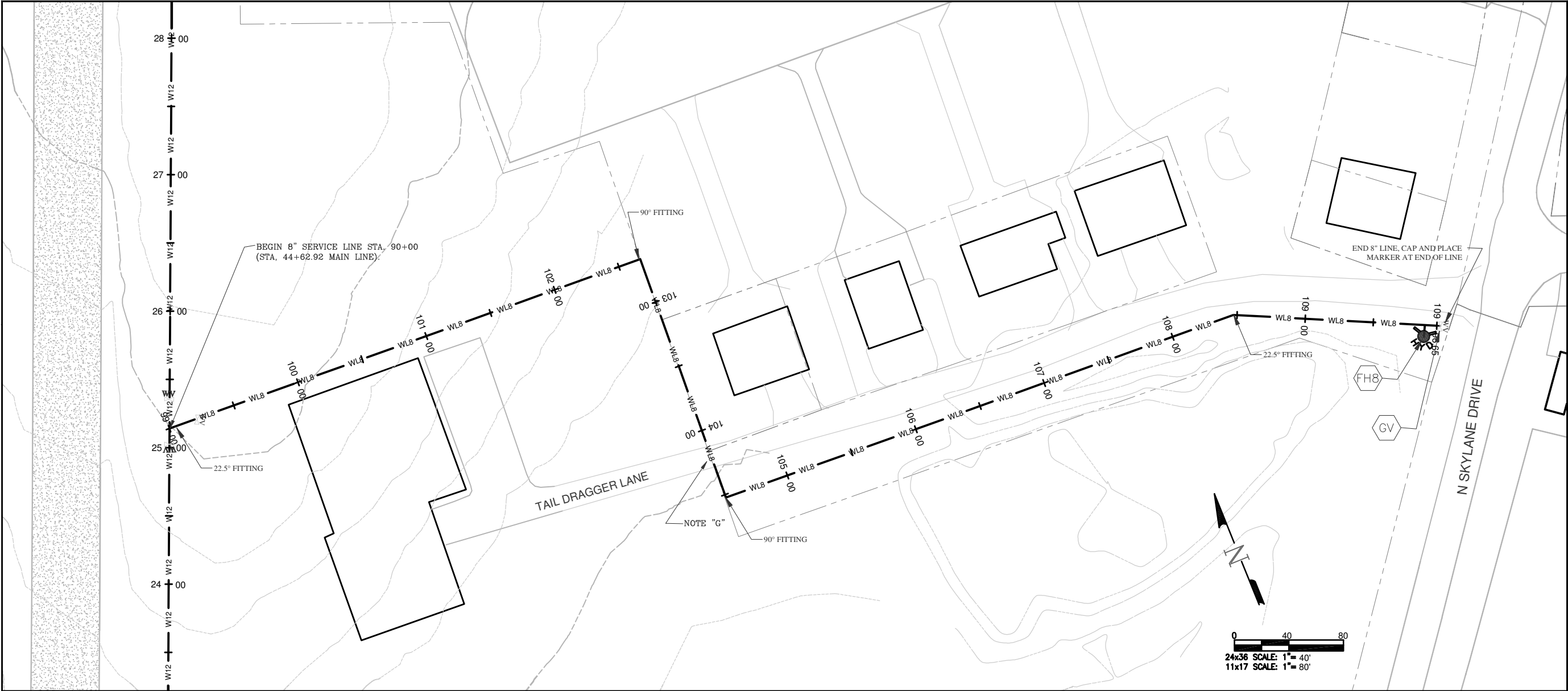
SHEET
11 OF 12

ANIMAS AIRPARK PROPERTY OWNERS ASSOCIATION
WATER DISTRIBUTION SYSTEM
PLAN AND PROFILE WIND SOCK ROAD

REVISIONS

NO.	DESCRIPTION	DATE

HARRIS WATER
ENGINEERING INC.
954 East Second Ave.
Durango, Co. 81303
970-259-1028



KEY NOTES

FH8 INSTALL FIRE HYDRANT PER DETAIL SHEET 4.

GV INSTALL 8" GATE VALVE BETWEEN FIRE HYDRANT AND END CAP. SEE DETAILS SHEET 3.

GENERAL NOTES

A ELEVATIONS ARE APPROXIMATE AND MAY NOT BE ACCURATE AT TIME OF CONSTRUCTION.

B STATIONING WILL BE SUBJECT TO ACTUAL FIELD CONDITIONS AND MAY VARY FROM THAT SHOWN.

C ALL FITTINGS ARE STANDARD UNLESS NOTED OTHERWISE. HORIZONTAL BENDS NOT SHOWN ARE TO BE PROVIDED AT NO EXTRA COST.

D ELEVATION CHANGES MAY NOT REQUIRE FITTINGS, CHECK USABLE PIPE BEND RADIUS. USABLE PIPE BEND RADIUS NOT TO EXCEED 75% OF MANUFACTURES RECOMMENDED ALLOWABLE.

E ALL LEGS OF WATER LINES AT VALVES SHALL HAVE MECHANICAL JOINT RESTRAINT (MJR) IN THE FORM OF MEGALUG 2000 SERIES PV MJR.

F PAVED ROAD CUTS TO BE FLOW FILLED TO WITHIN 10" OF TOP THEN 6" OF CLASS 6 AT 95% COMPACTION AND 4" OF HBP.

G GRAVEL ROADS TO BE BACKFILLED WITH CLASS 6 ENTIRE DEPTH IN 12" LIFTS AT 95% COMPACTION. .

LEGEND

WATER VALVE

PROPERTY LINES

EWL

12" WATERLINE

8" WATERLINE

EXISTING CONTOUR MINOR

EXISTING CONTOUR MAJOR

FIRE HYDRANT

WETLANDS

TREELINE

ELEVATIONS AND PROPERTY LINES DERIVED FROM CITY GIS MAPS AND ARE FOR INFORMATIONAL PURPOSES ONLY. FIELD CONDITIONS MAY VARY.

DATE: 6/30/2014

DRAWN BY: MG

CHECKED BY: BS

SHEET 12 OF 12

ANIMAS AIRPARK PROPERTY OWNERS ASSOCIATION

WATER DISTRIBUTION SYSTEM

PLAN AND PROFILE TAIL DRAGGER LANE

REVISIONS		
NO.	DESCRIPTION	DATE

HARRIS WATER ENGINEERING INC.

954 East Second Ave.
Durango, Co. 81303
970-259-1028