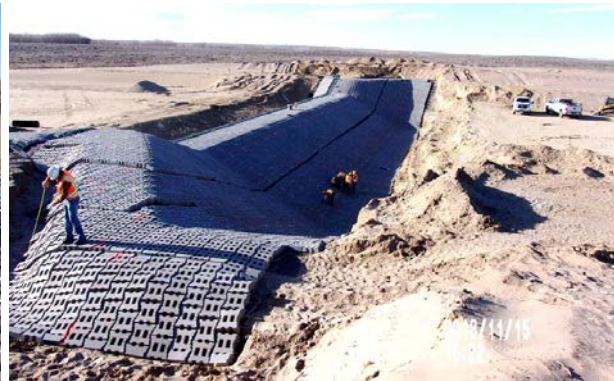




ACB mat installation at Station 17+00 completed.
Mat joints still require concrete fill.



ACB mat installation at Station 8+00 completed.



Completed structure
looking downstream.
Texture provided on side-
slopes to minimize erosion
prior to vegetation
establishment.



Completed project
looking upstream toward
reservoir at spillway
entrance.

Project Description

The Riverside Reservoir and Land Company (Company) owns and operates the 64,000 acre-foot capacity Riverside Dam and Reservoir, the Riverside Ditch inlet and the river diversion structure near the town of Kersey, Colorado. The Company diverts water from the South Platte River, approximately 10 miles downstream of Greeley, Colorado. It stores water primarily during winter months for irrigation releases during the following water season. The Company, formed in 1902, delivers irrigation water to approximately 50,000 acres. The Colorado Division of Water Resources, Dam Safety placed a jurisdictional restriction on the reservoir due to the lack of a spillway. In order to enhance the safety of the reservoir and prevent further storage restrictions, the Company constructed a spillway. On March 15, 2019, the Chief of Colorado Dam Safety removed the reservoir storage restriction and the facility was accepted for full use to the decreed storage level of gage height 33.55', when water is legally and physically available.

P R O J E C T D A T A		
<i>Sponsor:</i> Riverside Reservoir and Land Company	<i>County:</i> Weld	<i>Water Source:</i> South Platte River
<i>Type of Project:</i> Reservoir Rehabilitation		<i>Board Approval Date:</i> May 2009
<i>Terms of Loan:</i> 2.5% for 30 years (<i>Original</i>) \$2,838,100 (<i>Final</i>) \$1,493,650.48		
<i>Design Engineer:</i> W.W.Wheeler and Associates, Inc.		
<i>Contractor:</i> Connell Resources, Inc.		