

## Colorado Water Plan Analysis INSIGHTS

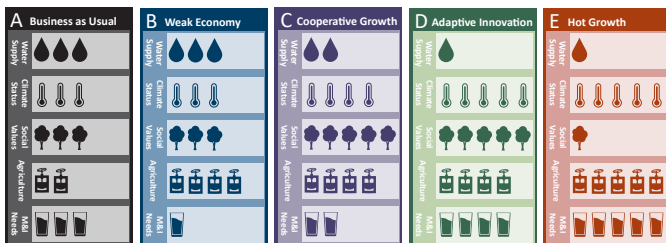


Population projections are a dominant driver in both basin and statewide water use. Population projections are used to estimate future municipal and industrial water use projections and other related impacts across each of the five planning scenarios.

The Colorado Water Plan Analysis (also known as the Statewide Water Supply Initiative or SWSI) includes three major enhancements to population projection methodologies and outputs:

- State Demography Office (SDO) population projections through 2050.
- Simplified methodology for estimating higher and lower projections.
- Projections across each of the five scenarios included the Colorado Water Plan.

The scenarios in the Colorado Water Plan have distinct assumptions as reflected in the scenario drivers below.



Current SDO Projections

Statewide SDO constrained; increase in some areas

High-Growth SDO Projections; increase in sprawl around rural areas

Low-Growth SDO Projections

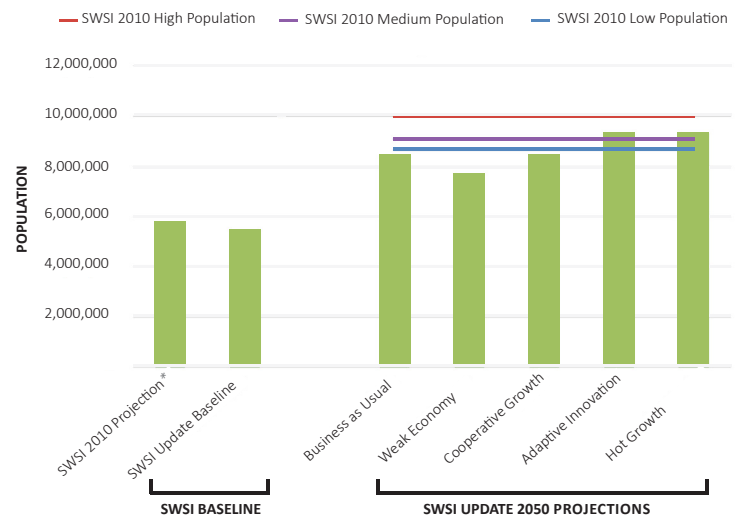
High-Growth SDO Projections; urban centers increase

### Analysis & Insights:

#### 1. LOWER TOTAL GROWTH EXPECTED

Despite Colorado's recent growth, population projections have come down in comparison to the SWSI 2010 analysis; this will be a key factor in determining future shortages.

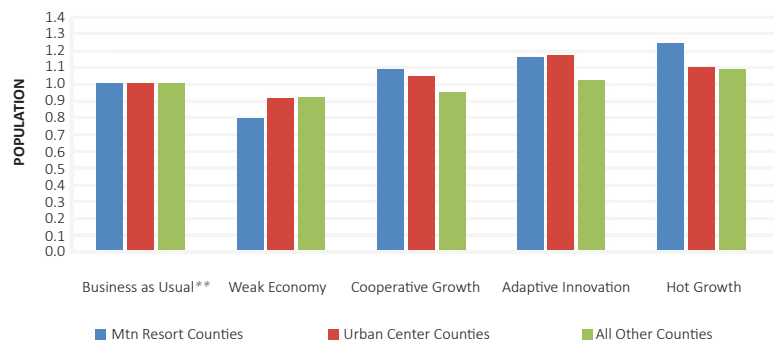
Statewide Population - Baseline and Projections



#### 2. URBAN, RURAL AND MOUNTAIN AREAS DIFFER

Future growth may not always be even across urban, rural and mountain resort communities. Shifts across these various communities may be more apparent in certain scenarios.

Urban Center to Mtn. Resort Counties Comparison: Normalized to Business as Usual



\*SWSI 2010 projection is shown adjusted for 2015 to compare to SWSI Update Baseline.

\*\*Business as Usual uses 2017 SDO projections.