



COLORADO WATER CONSERVATION BOARD



WATER SUPPLY RESERVE ACCOUNT
APPLICATION FORM

Today's Date: March 1, 2017

Rio Grande State Wildlife Area Design Project

Name of Water Activity/Project

Colorado Rio Grande Restoration Foundation

Name of Applicant

Rio Grande Basin
Roundtable

Amount from Statewide Account: \$0

Amount from Basin Account(s): \$90,000.00

Total WSRA Funds Requested: \$90,000.00

Approving Basin Roundtable(s)
(If multiple basins specify amounts in parentheses.)

FEIN: 75-3169057

Application Content

Application Instructions	page 2
Part I – Description of the Applicant	page 3
Part II – Description of the Water Activity	page 5
Part III – Threshold and Evaluation Criteria	page 7
Part IV – Required Supporting Material	
Water Rights, Availability, and Sustainability	page 10
Related Studies	page 10
Signature Page	page 12

Required Exhibits

- A. Statement of Work, Budget, and Schedule
- B. Project Map
- C. As Needed (i.e. letters of support, photos, maps, etc.)

Appendices – Reference Material

- 1. Program Information
- 2. Insurance Requirements
- 3. WSRA Standard Contract Information (Required for Projects Over \$100,000)
- 4. W-9 Form (Required for All Projects Prior to Contracting)

Instructions

To receive funding from the Water Supply Reserve Account (WSRA), a proposed water activity must be approved by the local Basin Roundtable **AND** the Colorado Water Conservation Board (CWCBC). The process for Basin Roundtable consideration and approval is outlined in materials in Appendix 1.

Once approved by the local Basin Roundtable, the applicant should submit this application **with a detailed statement of work including budget and schedule as Exhibit A** to CWCBC staff by the application deadline.

WSRA applications are due with the roundtable letter of support 60 calendar days prior to the bi-monthly Board meeting at which it will be considered. Board meetings are held in January, March, May, July, September, and November. Meeting details, including scheduled dates, agendas, etc. are posted on the CWCBC website at: <http://cwcb.state.co.us> Applications to the WSRA Basin Account are considered at every board meeting, while applications to the WSRA Statewide Account are only considered at the March and September board meetings.

When completing this application, the applicant should refer to the WSRA Criteria and Guidelines available at: <http://cwcb.state.co.us/LoansGrants/water-supply-reserve-account-grants/Documents/WSRACriteriaGuidelines.pdf>. In addition, the applicant should also refer to the [Supplemental Scoring Matrix](#) applied to Evaluation Criteria Tiers 1-3 for Statewide Account requests .

The application, statement of work, budget, and schedule **must be submitted in electronic format** (Microsoft Word or text-enabled PDF are preferred) and can be emailed or mailed on a disk to:

Craig Godbout - WSRA Application
Colorado Water Conservation Board
1313 Sherman St., Room 721
Denver, CO 80203
Craig.godbout@state.co.us

If you have questions or need additional assistance, please contact Craig Godbout at: 303-866-3441 x3210 or craig.godbout@state.co.us.

Water Supply Reserve Account – Application Form

Revised October 2013

Part I. - Description of the Applicant (Project Sponsor or Owner);

1.	Applicant Name(s):	Colorado Rio Grande Restoration Foundation		
	Mailing address:	623 Fourth Street Alamosa, CO 81101		
	FEIN #:	75-3169057		
	Primary Contact:	Emma Reesor	Position/Title:	Executive Director
	Email:	emma@riograndeheadwaters.org		
	Phone Numbers:	Cell: 316-217-5129	Office:	719-589-2230
	Alternate Contact:	Andréa Bachman	Position/Title:	Program Manager
	Email:	andrea@riograndeheadwaters.org		
	Phone Numbers:	Cell:	Office:	719-589-2230

2. Eligible entities for WSRA funds include the following. What type of entity is the Applicant?

- ☐ Public (Government) – municipalities, enterprises, counties, and State of Colorado agencies. Federal agencies are encouraged to work with local entities and the local entity should be the grant recipient. Federal agencies are eligible, but only if they can make a compelling case for why a local partner cannot be the grant recipient.
- ☐ Public (Districts) – authorities, Title 32/special districts, (conservancy, conservation, and irrigation districts), and water activity enterprises.
- ☐ Private Incorporated – mutual ditch companies, homeowners associations, corporations.
- ☐ Private individuals, partnerships, and sole proprietors are eligible for funding from the Basin Accounts but not for funding from the Statewide Account.
- ☒ Non-governmental organizations – broadly defined as any organization that is not part of the government.

Water Supply Reserve Account – Application Form

Revised October 2013

3. Provide a brief description of your organization

The Colorado Rio Grande Restoration Foundation (Foundation), a 501(c)(3) Colorado non-profit organization, is the fiscal agent for the Rio Grande Headwaters Restoration Project (RGHRP). The mission of the Rio Grande Headwaters Restoration Project is “to restore and conserve the historical functions and vitality of the Rio Grande in Colorado for improved water quality, optimal agricultural water use, riparian habitat, wildlife and aquatic species habitat, recreation, and community safety, while meeting the requirements of the Rio Grande Compact.” The RGHRP was formed to implement the recommendations of a study completed in 2001. The 2001 Study was prompted by local stakeholders due to a realized deterioration of the historic functions of the Rio Grande, which include providing high quality water, healthy riparian areas, fish and wildlife habitat, and a functioning floodplain. The 2001 Study analyzed the condition of the riparian area and structures along a 91-mile reach of the Rio Grande and provided recommendations for improvement. The 2001 Study was sponsored by the San Luis Valley Water Conservancy District and funded with a \$250,000 grant from the Colorado Water Conservation Board (CWCB). In 2004, the need was identified for a well-defined Rio Grande Watershed Restoration Strategic Plan (Strategic Plan). Completed in 2007, the Strategic Plan highlighted the importance of continued efforts to implement the recommendations from the 2001 Study. Since establishment, the RGHRP has accrued a successful record of performing projects on the Rio Grande through collaboration with landowners and local, state, and federal entities.

The RGHRP has four Programs: The Streambank Stabilization and Riparian Restoration Program, the In-Stream Infrastructure Improvement Program, the Watershed Stewardship Program, and the Outreach and Education Program. Through the Streambank Stabilization and Riparian Restoration Program, the RGHRP has administered seven (7) cost-share restoration projects on sixty (60) sites with \$1.8 million grant funding raised. The projects have improved river function using a multi-faceted approach to riparian restoration and streambank stabilization, and have resulted in the improvement of approximately eleven (11) miles of streambanks. Including contributions from partners and landowners, the total value of these projects is \$2.2 million. The techniques used include bank and channel shaping, revegetation, installation of rock and log structures, and implementation of grazing best management practices. These projects reduce sediment loading by stabilizing the streambanks, improve the riparian and upland habitat by increasing willow and riparian vegetation cover, and enhance the fishery. Additionally, the capacity of the Rio Grande to transport sediment that has entered the system from upstream reaches is increased. Finally, improvements to riparian habitat and floodplain function improve the condition of wetlands located throughout the riparian areas within the Project boundaries. The RGHRP works with the Colorado Watershed Assembly’s Colorado Measurable Results Program (MRP) to complete long-term monitoring of the Projects.

Through the In-Stream Infrastructure Improvement Program, the RGHRP is working with ditch companies to address concerns surrounding aging and inefficient diversion and headgate structures. The first of these projects was the Plaza Planning Project – Phase 1 (Phase 1) in the Sevenmile Plaza area of Rio Grande County. The RGHRP worked with stakeholders to determine the primary issues in the area, identify remediation methods, and develop an implementation plan, The Plaza Plan, to improve the health and function of the Rio Grande in the Sevenmile Plaza area. The identified issues include streambank instability in the 2.8-mile project reach, a degraded wetland, and aging, hazardous, and inefficient diversion structures. Implementation of the Plaza Plan occurred through the Plaza Project – Phase 2: The McDonald Ditch Implementation Project (Phase 2) and the Plaza Project Phase 3: The Prairie Ditch Implementation Project (Phase 3). Phase 2 included the replacement of the McDonald Ditch diversion dam. Phase 3 included the replacement of the aging Prairie Ditch diversion and headgate. Both new diversions allow for more efficient diversions and include passage for fish and improvements to community safety. These

Water Supply Reserve Account – Application Form

Revised October 2013

efforts enhance the continuity and function of the Rio Grande.

Through the Watershed Stewardship Program, the RGHRP works with partners to complete forest health and wildfire hazard mitigation projects. In the summer of 2013, the West Fork Complex Fire burned over 110,000 acres in the upper Rio Grande watershed. In response, the Rio Grande Watershed Emergency Action Coordination Team (RWEACT) was formed. The RGHRP has taken the lead in coordinating RWEACT's natural resources committee and implementing projects in the aftermath of the fire. For example, the RGHRP and Colorado School of Mines deployed 6 water quality monitoring probes throughout the watershed to observe the effects of the wildfire on riparian areas and aquatic health. The RGHRP continues to monitor water quality. Additionally, the RGHRP designed and implemented 10 experimental plots within the burned area to investigate methods to improve vegetative cover, increase soil water holding capacity, and reduce hill slope erosion. Data gathered from monitoring the plots will influence the methods used in future wildfire restoration projects. Finally, the RGHRP is the project lead for the Upper Rio Grande Watershed Assessment, which will provide a comprehensive document of the condition of the Rio Grande and major tributaries from the headwaters to the town of South Fork, identifying causes of concern, and developing a list of prioritized projects that will improve the function of uplands, and riparian and aquatic ecosystems. The Assessment is currently underway and includes a diverse list of project partners and expertise.

The RGHRP administers a robust Outreach and Education Program. Informative press releases are submitted to local and regional media with notable project updates. Talks and tours are routinely given to local schools, community groups, and water related organizations. Volunteer events encourage community members to get involved and connected with the Rio Grande. The RGHRP website provides project updates and information. Additionally, the RGHRP holds a Water Leaders course each spring in conjunction with other partners to educate community members on water issues in the San Luis Valley. Content of the Outreach and Education program includes details about projects, partnerships, funding entities, and the importance of protecting and conserving the Rio Grande.

4. If the Contracting Entity is different then the Applicant (Project Sponsor or Owner) please describe the Contracting Entity here.

The Colorado Rio Grande Restoration Foundation is the Contracting Entity, on behalf of the Rio Grande Headwaters Restoration Project.

5. Successful applicants will have to execute a contract with the CWCB prior to beginning work on the portion of the project funded by the WSRA grant. In order to expedite the contracting process the CWCB has established a standard contract with provisions the applicant must adhere to. A link to this standard contract is included in Appendix 3. Please review this contract and check the appropriate box.

☒

The Applicant will be able to contract with the CWCB using the Standard Contract

☐

The Applicant has reviewed the standard contract and has some questions/issues/concerns. Please be aware that any deviation from the standard contract could result in a significant delay between grant approval and the funds being available.

Water Supply Reserve Account – Application Form

Revised October 2013

6. The Tax Payer Bill of Rights (TABOR) may limit the amount of grant money an entity can receive. Please describe any relevant TABOR issues that may affect the applicant.

The Applicant, The Colorado Rio Grande Restoration Foundation, is not subject to TABOR limitations, as it is a Colorado nonprofit organization operating under Section 501(c)(3) of the U.S. Internal Revenue Code.

Water Supply Reserve Account – Application Form

Revised October 2013

Part II. - Description of the Water Activity/Project

1. What is the primary purpose of this grant application? (Please check only one)

☐

Nonconsumptive (Environmental or Recreational)

☒

Agricultural

☐

Municipal/Industrial

☐

Needs Assessment

☐

Education

☐

Other

Explain:

2. If you feel this project addresses multiple purposes please explain.

Although the primary purpose of this project is to improve agricultural irrigation infrastructure, the project will also address multiple environmental and recreational concerns. The project will protect water delivery to critical riparian and wetland habitat, improve water quality and river function, enhance aquatic habitat, and protect public recreation opportunities.

The project brings together a diverse group of project partners, all united with a common goal to improve the river for agriculture, community enjoyment, and wildlife that depend on riparian ecosystems. This collaborative approach will result in a holistic solution benefitting each entity and the broader community.

3. Is this project primarily a study or implementation of a water activity/project? (Please check only one)

☐

Study

☒

Implementation

4. To catalog measurable results achieved with WSRA funds can you provide any of the following numbers?

New Storage Created (acre-feet)

New Annual Water Supplies Developed, Consumptive or Nonconsumptive (acre-feet)

Existing Storage Preserved or Enhanced (acre-feet)

1000

Length of Stream Restored or Protected (linear feet)

Length of Pipe/Canal Built or Improved (linear feet)

Efficiency Savings (acre-feet/year OR dollars/year – **circle one**)

1

Area of Restored or Preserved Habitat (acres)

3

Other -- Explain:

Designs for 3 diversion improvement projects

Water Supply Reserve Account – Application Form

Revised October 2013

4. To help us map WSRA projects please include a map (Exhibit B) and provide the general coordinates below:

Latitude: 37° 34' 36.516"

Longitude: -106° 4' 19.7754"

5. Please provide an overview/summary of the proposed water activity (no more than one page). Include a description of the overall water activity and specifically what the WSRA funding will be used for. A full **Statement of Work** with a detailed budget and schedule is required as **Exhibit A** of this application.

The Rio Grande State Wildlife Area (RGSWA) Design Project is a collaborative effort to protect agricultural and environmental irrigation infrastructure along the Rio Grande in the San Luis Valley. Stretching along 4.5 miles of the Rio Grande and encompassing 1,000 acres of diverse wetland and upland habitat, the RGSWA supports many species in the San Luis Valley, including the endangered Southwestern Willow Flycatcher and threatened Western Yellow-billed Cuckoo.

Currently, the Rio Grande flowing through the RGSWA is unstable. River dynamics are eroding streambanks at an accelerated rate near water control infrastructure, threatening water delivery the San Luis Valley (SLV) Canal and the Centennial Ditch, as well as the CPW siphon. Under flood conditions, CPW Managers are concerned that the Rio Grande will wash away the siphon and change channel course, cutting off water delivery to the Centennial Ditch. This would eliminate CPW's ability to maintain the 100 acres of critical wetlands that are irrigated by the siphon and Centennial Ditch. This Project addresses these concerns and protects critical wetland and riparian habitat through streambank stabilization, riparian restoration, and the replacement of aging irrigation infrastructure.

Apart from providing water to the RGSWA, the Centennial Ditch supplies water to senior water users with a total decree of 82.4 cubic feet per second (cfs) and 22 stockholders. Currently the Centennial Ditch Diversion is old and experiencing issues related to channel instability, sedimentation, hazardous conditions, and high maintenance needs for the ditch rider. In high flows, ditch board members are concerned the river may jump channel, circumventing the diversion dam and headgate. Thus, leaving the Centennial without irrigation water and adversely affecting the water supply to the Centennial Ditch shareholders and the RGSWA.

The SLV Canal, another important water source for the wetland complex on the RGSWA through return flows, borders the RGSWA to the north. The SLV Canal has a total decree of 500.98 cfs and 78 stockholders. At the Canal's point of diversion, the river is experiencing high channel instability, sedimentation, and an aging headgate, making it difficult for the canal company to manage flows for irrigation.

The Project also includes the improvement of the Rio Grande 2 diversion, located approximately 30 miles upstream of the RGSWA on the north channel of the Rio Grande. The Rio Grande 2 is a smaller, senior ditch with 4 shareholders and a total decree of 4.2 cfs. The Rio Grande 2 diversion traps high amounts of trash and sediment along the dam and headgate, resulting in high maintenance requirements and the inability to get all its allotted water at low flows.

The WSRF request will fund the survey, design, and permitting for improvements to the SLV Canal Headgate, Centennial Ditch Diversion, and the Rio Grande 2 Diversion, resulting in three shovel ready diversion improvement projects. The implementation of these projects will significantly improve river health and water

Water Supply Reserve Account – Application Form

Revised October 2013

quality for the fisheries and other beneficiaries, support a safer river for recreation, increase agricultural diversion efficiency, and protect the water supply to the complex wetland system on the RGSWA.

Part III. – Threshold and Evaluation Criteria

1. Describe how the water activity meets these **Threshold Criteria**. (Detailed in Part 3 of the Water Supply Reserve Account Criteria and Guidelines.)

- a) The water activity is consistent with Section 37-75-102 Colorado Revised Statutes.¹

The proposed project is consistent with Section 37-75-102 C.R.S. because it does not supersede, abrogate, or otherwise impair the State's current system of allocating water within Colorado or in any manner repeal or amend the existing water rights adjudication system. This project does not affect the State constitution's recognition of water rights as a private usufructuary property right nor is it intended to restrict the ability of the holder of a water right to use or to dispose of that water right in any manner permitted under Colorado law.

The RGSWA Project protects water users and landowners along the Rio Grande from loss by protecting water infrastructure through streambank stabilization, replacing aging diversion infrastructure, repairing the river channel, and restoring the riparian corridor, thereby helping to ensure that the provisions of Section 37-75-102 C.R.S. are supported and observed.

- b) The water activity underwent an evaluation and approval process and was approved by the Basin Roundtable (BRT) and the application includes a description of the results of the BRT's evaluation and approval of the activity. At a minimum, the description must include the level of agreement reached by the roundtable, including any minority opinion(s) if there was not general agreement for the activity. The description must also include reasons why general agreement was not reached (if it was not), including who opposed the activity and why they opposed it. Note- If this information is included in the letter from the roundtable chair simply reference that letter.

This information is included in the letter from the Rio Grande Inter-Basin Roundtable Chairman, Nathan Coombs.

¹ 37-75-102. Water rights - protections. (1) It is the policy of the General Assembly that the current system of allocating water within Colorado shall not be superseded, abrogated, or otherwise impaired by this article. Nothing in this article shall be interpreted to repeal or in any manner amend the existing water rights adjudication system. The General Assembly affirms the state constitution's recognition of water rights as a private usufructuary property right, and this article is not intended to restrict the ability of the holder of a water right to use or to dispose of that water right in any manner permitted under Colorado law. (2) The General Assembly affirms the protections for contractual and property rights recognized by the contract and takings protections under the state constitution and related statutes. This article shall not be implemented in any way that would diminish, impair, or cause injury to any property or contractual right created by intergovernmental

Water Supply Reserve Account – Application Form

Revised October 2013

-
- c) The water activity meets the provisions of Section 37-75-104(2), Colorado Revised Statutes.² The Basin Roundtable Chairs shall include in their approval letters for particular WSRA grant applications a description of how the water activity will assist in meeting the water supply needs identified in the basin roundtable's consumptive and/or non-consumptive needs assessments.

This information is included in the letter from the Rio Grande Inter-Basin Roundtable Chairman, Nathan Coombs.

- d) Matching Requirement: For requests from the **Statewide Fund**, the applicants will be required to demonstrate a **25 percent** (or greater) match of the total grant request from the other sources, including by not limited to Basin Funds. A minimum match of 5% of the total grant amount shall be from Basin funds. A minimum match of 5% of the total grant amount must come from the applicant or 3rd party sources. Sources of matching funds include but are not limited to Basin Funds, in-kind services, funding from other sources, and/or direct cash match. Past expenditures directly related to the project may be considered as matching funds if the expenditures occurred within 9 months of the date the contract or purchase order between the applicant and the State of Colorado is executed. Please describe the source(s) of matching funds. (NOTE: These matching funds should also be reflected in your Detailed Budget in **Exhibit A** of this application)

Matching funds are as follows: \$24,990 or 12% from the Colorado Parks and Wildlife Wetlands Program, \$25,000 or 12% from Great Outdoors Colorado Habitat Restoration Grant Program, and \$60,000 or 28% from the North American Wetlands Conservation Act Grant Program (pending). The Foundation is requesting \$90,000 from the Rio Grande Basin Water Supply Reserve Fund, or 42% of the total project cost of \$213,990. See Exhibit A for the Detailed Project Budget.

² 37-75-104 (2)(c). Using data and information from the Statewide Water Supply Initiative and other appropriate sources and in cooperation with the on-going Statewide Water Supply Initiative, develop a basin-wide consumptive and nonconsumptive water supply needs assessment, conduct an analysis of available unappropriated waters within the basin, and propose projects or methods, both structural and nonstructural, for meeting those needs and utilizing those unappropriated waters where appropriate. Basin Roundtables shall actively seek the input and advice of affected local governments, water providers, and other interested stakeholders and persons in establishing its needs assessment, and shall propose projects or methods for meeting those needs. Recommendations from this assessment shall be forwarded to the Interbasin Compact Committee and other basin roundtables for analysis and consideration after the General Assembly has approved the Interbasin Compact Charter.

Water Supply Reserve Account – Application Form

Revised October 2013

2. For Applications that include a request for funds from the **Statewide Account**, describe how the water activity/project meets all applicable **Evaluation Criteria**. (Detailed in Part 3 of the Water Supply Reserve Account Criteria and Guidelines and repeated below.) Projects will be assessed on how well they meet the Evaluation Criteria. **Please attach additional pages as necessary.**

Evaluation Criteria – the following criteria will be utilized to further evaluate the merits of the water activity proposed for funding from the Statewide Account. In evaluation of proposed water activities, preference will be given to projects that meet one or more criteria from each of the three “tiers” or categories. Each “tier” is grouped in level of importance. For instance, projects that meet Tier 1 criteria will outweigh projects that only meet Tier 3 criteria. The applicant should also refer to the Supplemental Scoring Matrix applied to Evaluation Criteria Tiers 1-3 for Statewide Account requests. WSRA grant requests for projects that may qualify for loans through the CWCB loan program will receive preference in the Statewide Evaluation Criteria if the grant request is part of a CWCB loan/WSRA grant package. For these CWCB loan/WSRA grant packages, the applicant must have a CWCB loan/WSRA grant ratio of 1:1 or higher. Preference will be given to those with a higher loan/grant ratio.

Project funds are being requested from the Rio Grande Basin Account only.

Part IV. – Required Supporting Material

1. **Water Rights, Availability, and Sustainability** – This information is needed to assess the viability of the water project or activity. Please provide a description of the water supply source to be utilized, or the water body to be affected by, the water activity. This should include a description of applicable water rights, and water rights issues, and the name/location of water bodies affected by the water activity.

Water Body Affected: The water body affected by the RGSWA Design Project is the Rio Grande. The Rio Grande watershed in Colorado covers 8,200 square miles (Exhibit B. Maps – Figure 1). The river flows 200 miles through Colorado, originating near the Continental Divide. Numerous tributaries converge on the east slope of the Continental Divide from elevations near 13,000 feet to form the Rio Grande mainstem. The river flows to the east through the Rio Grande National Forest and then through private property to the confluence with the South Fork of the Rio Grande at approximately 8,200 feet elevation, where the town of South Fork is located. The Rio Grande enters the San Luis Valley, the largest intermountain basin in Colorado, at the town of South Fork. The river then flows southeast for approximately 65 miles through Del Norte and Monte Vista to Alamosa, the largest city in the watershed, at an elevation of approximately 7,550 feet. The river turns to the south and flows for another 40 miles to the New Mexico border.

The project area is in primarily in Subreach D5 and D6 of the Rio Grande, as designated in the 2001 Study (Exhibit B. Maps – Figure 2). The Rio Grande 2 diversion is in Subreach BA1. Subreach D5 and D6 includes the RGSWA and the SLV Canal diversion and Centennial Ditch diversion. The division of the 2001 Study area into several reaches was based on homogeneous characteristics related to hydrology, floodplain characteristics, geomorphology, and vegetative conditions.

Water Rights:

The project will not change or affect any water rights or their allocation. The project will protect existing water rights by improving diversion efficiency and providing increased riparian stability through the project reach. Below is a table summarizing the water rights protected through this project

Diversion	Acres Irrigated	Number of Shareholders	Total Decree (cfs)	Amount diverted last year (AF)	Oldest Appropriation
San Luis Valley Canal	20,200	78	500.98	24,561	1885
Centennial Ditch	8,500	22	82.4	25,731	1874
Rio Grande 2	250	4	4.2	1,610	1875
TOTAL	28,950	104	587.58	51902	

2. Please provide a brief narrative of any related studies or permitting issues.

Water Supply Reserve Account – Application Form

Revised October 2013

The 2001 Study: The 2001 Study was prompted by local stakeholders due to a realized deterioration of the functions of the Rio Grande. The 2001 Study analyzed the condition of the riparian area and structures along a 91-mile reach of the Rio Grande from the town of South Fork to the Alamosa – Conejos County line (Attachment B. Maps - Figures 1 and 2). The 2001 Study was sponsored by the San Luis Valley Water Conservancy District and funded with a \$250,000 grant from the Colorado Water Conservation Board (CWCB). The study evaluated the condition of the river's functions as they related to:

- a. The condition of riparian habitat and fisheries;
- b. Accessibility of the river to existing irrigation structures and their condition and performance;
- c. The protection of lives and property;
- d. The protection of channel and flood plain from flood damage;
- e. The maintenance of river channel and over bank capacity;
- f. The ability to meet the Rio Grande Compact requirements.

The 2001 Study found the primary cause of degradation to be sedimentation and identified measures that could be implemented to holistically improve the river's functions. These measures were both "structural" in nature, such as riparian restoration or diversion replacement, or "non – structural" measures, such as grazing management practices or land use issues. The RGSWA Project seeks to implement these actions in order to improve the function of the Rio Grande.

The 2007 Rio Grande Watershed Restoration Strategic Plan: In 2004 the need was identified for a well-defined Rio Grande Watershed Restoration Strategic Plan (Strategic Plan). Completed in 2007, the Strategic Plan outlined priority projects for the entire Rio Grande watershed in Colorado. Priority projects included: flood protection, riparian and headgate improvements, grazing management, flow management, and future studies. The Strategic Plan highlighted the importance of continued efforts to implement the recommendations from the 2001 Study.

The RGSWA Project seeks to address priority issues highlighted in the 2001 Study and the Strategic Plan to improve the function of the Rio Grande through streambank stabilization, riparian restoration, and irrigation infrastructure improvements.

3. Statement of Work, Detailed Budget, and Project Schedule

The statement of work will form the basis for the contract between the Applicant and the State of Colorado. In short, the Applicant is agreeing to undertake the work for the compensation outlined in the statement of work and budget, and in return, the State of Colorado is receiving the deliverables/products specified. **Please note that costs incurred prior to execution of a contract or purchase order are not subject to reimbursement.** All WSRA funds are disbursed on a reimbursement basis after review invoices and appropriate backup material.

Please provide a detailed statement of work using the template in Exhibit A. Additional sections or modifications may be included as necessary. Please define all acronyms and include page numbers.

See Exhibit A: Scope of Work

REPORTING AND FINAL DELIVERABLE

Reporting: The applicant shall provide the CWCB a progress report every 6 months, beginning from the date of the executed contract. The progress report shall describe the completion or partial completion of the tasks identified in the statement of work including a description of any major issues that have occurred and any corrective action taken to address these issues.

Final Deliverable: At completion of the project, the applicant shall provide the CWCB a final report that summarizes the project and documents how the project was completed. This report may contain photographs, summaries of meetings and engineering reports/designs.

PAYMENT

Payment will be made based on actual expenditures and invoicing by the applicant. Invoices from any other entity (i.e. subcontractors) cannot be processed by the State. The request for payment must include a description of the work accomplished by major task, and estimate of the percent completion for individual tasks and the entire water activity in relation to the percentage of budget spent, identification of any major issues and proposed or implemented corrective actions. The last 10 percent of the entire water activity budget will be withheld until final project/water activity documentation is completed. All products, data and information developed as a result of this grant must be provided to the CWCB in hard copy and electronic format as part of the project documentation. This information will in turn be made widely available to Basin Roundtables and the general public and help promote the development of a common technical platform.

Water Supply Reserve Account – Application Form

Revised October 2013

The above statements are true to the best of my knowledge:

Signature of Applicant:



Print Applicant's Name: Emma Reesor

Project Title: Rio Grande State Wildlife Area Design Project

Date: March 4, 2017

Return an electronic version (hardcopy may also be submitted) of this application to:

Craig Godbout – WSRA Application
Colorado Water Conservation Board
1313 Sherman St., Room 721
Denver, CO 80203
303-866-3441, ext. 3210 (office)
303-547-8061 (cell)
craig.godbout@state.co.us

BUDGET

Project Budget: Rio Grande State Wildlife Area Design Project

Task	WSRF Rio Grande Basin Account Request	Matching Funds			In-Kind Match		TOTAL
		CPW- Wetlands Program	NAWCA*	GOCO Habitat Restoration Grant	CPW	CRGRF	
Task 1: Survey and Design of streambank stabilization	\$ -	\$ -	\$ 20,000.00	\$ -	\$ -	\$ -	\$ 20,000.00
Task 2: Construction and materials streambank stabilization	\$ -	\$ 24,990.00	\$ 40,000.00	\$ 25,000.00	\$ -	\$ -	\$ 89,990.00
Task 3: Survey, design, and permitting for Centennial Ditch Diversion Improvement	\$ 28,000.00	\$ -	\$ -	\$ -	\$ -	\$ -	\$ 28,000.00
Task 4: Survey, design, and permitting for SLV Canal Headgate	\$ 32,000.00	\$ -	\$ -	\$ -	\$ -	\$ -	\$ 32,000.00
Task 5: Survey and Design forRio Grande 2 improvement project	\$ 16,000.00	\$ -	\$ -	\$ -	\$ -	\$ -	\$ 16,000.00
Task 6: Monitoring	\$ -	\$ -	\$ -	\$ -	\$ 10,000.00	\$ -	\$ 10,000.00
Task 7: Project Management, Outreach and Education	\$ 12,000.00	\$ -	\$ -	\$ -	\$ -	\$ 4,000.00	\$ 16,000.00
Task 8: Project Administration	\$2,000	\$ -	\$ -	\$ -	\$ -	\$ -	\$ 2,000.00
TOTAL	\$ 90,000.00	\$ 24,990.00	\$ 60,000.00	\$ 25,000.00	\$ 10,000.00	\$ 4,000.00	\$ 213,990.00
PERCENT OF TOTAL BUDGET	42%	12%	28%	12%	5%	2%	100.00%

* Pending Funds

Exhibit A: Statement of Work

WATER ACTIVITY NAME – Rio Grande State Wildlife Area Design Project

GRANT RECIPIENT – Colorado Rio Grande Restoration Foundation

FUNDING SOURCE – WSRA Rio Grande Basin Account

INTRODUCTION AND BACKGROUND

The Rio Grande State Wildlife Area (RGSWA) includes 4.5 miles of the Rio Grande and 1000 acres of diverse wetland and upland habitats. The Rio Grande flowing through the RGSWA is increasingly unstable, threatening water delivery to the San Luis Valley Canal, the Centennial Ditch as well as the Colorado Parks and Wildlife (CPW) siphon. In addition, the SLV Canal and Centennial Ditch adjacent to the RGSWA and the Rio Grande 2 Ditch further upstream are all aging and in need of repair. This Project addresses these concerns and protects critical wetland and riparian habitat through the design and implementation of streambank stabilization, riparian restoration, and the replacement of ageing irrigation infrastructure.

The WSRF request will fund the survey, design, and permitting for improvements to the SLV Canal Headgate, Centennial Ditch Diversion, and the Rio Grande 2 Diversion, resulting in three shovel ready diversion improvement projects.

The Project will protect wetland habitat, restore riparian habitat, enhance aquatic habitat, and improve the overall condition of the Rio Grande. Additionally, the Project will protect and replace agricultural irrigation infrastructure and protect public recreation opportunities. When complete, the project will ensure that the Rio Grande can continue to support the diverse human, agricultural, and ecological communities that depend on it.

OBJECTIVES

The objectives of the RGSWA Design Project are to:

- 1) Protect over 100 acres of critical wetland habitat through the stabilization of 1000 feet of streambank, protecting CWP water control infrastructure;
- 2) Restore 1 acre of riparian habitat along the Rio Grande in the project area;
- 3) Enhanced aquatic habitat through the construction of rock barbs and root wads for increased resting and feeding areas;
- 4) Improved water quality and river function through reduced sediment loading and improved floodplain connectivity;
- 5) Complete designs needed to implement 3 diversion infrastructure improvement projects;
- 6) Protect local recreation opportunities through the maintenance of high quality waterfowl habitat on the RGSWA;
- 7) Promote public involvement in water improvement activities through public outreach and education.

TASKS

TASK 1 – Design of Streambank Stabilization on RGSWA

Description of Task: Complete survey, design, and permitting for the streambank stabilization and riparian restoration on the RGSWA.

Method/Procedure: Riverbend Engineering will complete designs for the streambank stabilization and riparian restoration, including topographic surveying and base mapping, engineering planning, design, design review and cost estimating. Additionally, Riverbend Engineering will complete construction specifications and bid documents and obtain required permit documents.

Deliverables: Designs for the streambank stabilization and riparian restoration on the RGSWA.

TASK 2 – Construction of Streambank Stabilization

Description of Task: Implement channel shaping, streambanks stabilization, aquatic habitat enhancement and riparian revegetation techniques along the Rio Grande through the RGSWA.

Method/Procedure: A hired contractor will implement the designs developed in Task 1, which may include bank shaping, channel reconfiguration, rock or log structure installation, and riparian revegetation, including willow clump plantings. Upland areas disturbed during onsite activities will be reseeded with appropriate species.

Deliverable: Stabilized streambanks, reduced sediment loading, reestablished riparian vegetation, and reduced erosion, ultimately sustaining water delivery to 100 acres of wetlands by protecting CPW water control infrastructure.

TASK 3 – Design of Centennial Ditch Diversion Improvement

Description of Task: Complete survey, design, and permitting for the Centennial Ditch Diversion Improvement.

Method/Procedure: Riverbend Engineering will complete designs for improvements to the Centennial Ditch Diversion and adjacent streambank stabilization. This will include topographic surveying and base mapping, engineering planning, design, design review and cost estimating. Additionally, Riverbend Engineering will complete construction specifications and bid documents and obtain required permit documents.

Deliverable: Designs and permits required for the implementation of the Centennial Ditch Diversion improvement and associated streambank stabilization.

TASK 4 – Design of San Luis Valley Canal Headgate Improvement

Description of Task: Complete survey, design, and permitting for the San Luis Valley Canal Headgate Improvement.

Method/Procedure: Riverbend Engineering will complete designs for improvements to the San Luis Valley Canal Headgate and adjacent streambank stabilization. This will include topographic surveying and base mapping, engineering planning, design, design review and cost estimating. Additionally, Riverbend Engineering will complete construction specifications and bid documents and obtain required permit documents.

Deliverable: Designs and permits required for the implementation of the San Luis Valley Canal Headgate improvement and associated streambank stabilization.

TASK 5 – Design of Rio Grande 2 Diversion Improvement

Description of Task: Complete survey, design, and permitting for the Rio Grande 2 Ditch Diversion Improvement.

Method/Procedure: Riverbend Engineering will complete designs for improvements to the Rio Grande 2 and adjacent streambank stabilization. This will include topographic surveying and base mapping, engineering planning, design, design review and cost estimating. Additionally, Riverbend Engineering will complete construction specifications and bid documents and obtain required permit documents.

Deliverable: Designs and permits required for the implementation of the Rio Grande 2 Diversion improvement and associated streambank stabilization.

TASK 6 – Monitoring

Description of Task: Monitor the site following construction using the RGHRP Sampling and Analysis Plan (SAP) and CPW sampling methods

Method/Procedure: CPW and RGHRP staff will monitor the project area regularly to ensure the success of project methods and the maintenance of quality wetland habitat on the RGSWA. Photo points and river cross sections will be used to track the condition of riparian plant communities, bank stabilization, an overall visual condition of the project area before and after construction. The United States Department of Agriculture's Stream Visual Assessment Protocol II (SVAP II) will be used to assess the site before construction and for two years after construction. Data collection will be summarized and reported annually.

Deliverable: Annual Reports will compare current data to prior data in order to demonstrate the relative stability of the stream bank and to evaluate the degree of improvement in the riparian condition.

TASK 7 – Project Management, Outreach and Education

Description of Task: Complete project oversight, management, and partner coordination. Conduct public outreach and education program to raise awareness of the RGSWA Project activities and the RGHRP, and encourage other landowners and agencies to participate in future projects.

Method/Procedure: The RGHRP staff will perform project oversight and outreach and education. This will include coordinating partner meetings; completing contracts with project partners, landowners and contractors; obtaining necessary environmental permits; organizing outreach and education efforts; and completing site monitoring in partnership with CPW. Outreach and Education efforts will include developing visual aids and written material showing proposed work; making presentations at the SLV Wetlands Area Focus Committee; Rio Grande Interbasin Roundtable, quarterly board meetings of the Rio Grande Water Conservancy District; board meetings of the San Luis Valley Water Conservancy District, and to specific public meetings; and hosting project tours. RGHRP staff and volunteers will complete project outreach and education.

Deliverable: All appropriate contracts, meetings, reports, and on-site Project activities completed within planned period and anticipated costs. Outreach and education efforts will result in a public that is better

informed and more aware of river related issues, including site-specific methodologies used to achieve project objectives.

TASK 8 – Project Administration

Description of Task: Complete all necessary grant contracts and status reports. Ensure Tasks are completed within approved costs and timelines.

Method/Procedure: The RGHRP will administer the RGSWA Design Project and WSRF Grant. This includes completing contracts with the CWCB, project partners, and contractors; managing budgets and reimbursement requests; and completing semi-annual and final reports.

Deliverable: All required contracts, grant reports, and funded activities completed within planned timeline and budget.

REPORTING AND FINAL DELIVERABLE

Reporting: The applicant shall provide the CWCB a progress report every 6 months, beginning from the date of the executed contract. The progress report shall describe the completion or partial completion of the tasks identified in the statement of work including a description of any major issues that have occurred and any corrective action taken to address these issues.

Final Deliverable: At completion of the project, the applicant shall provide the CWCB a final report that summarizes the project and documents how the project was completed. This report may contain photographs, summaries of meetings and engineering reports/designs.

BUDGET

Project Budget: Rio Grande State Wildlife Area Design Project

Task	WSRF Rio Grande Basin Account Request	Matching Funds			In-Kind Match		TOTAL
		CPW- Wetlands Program	NAWCA*	GOCO Habitat Restoration Grant	CPW	CRGRF	
Task 1: Survey and Design of streambank stabilization	\$ -	\$ -	\$ 20,000.00	\$ -	\$ -	\$ -	\$ 20,000.00
Task 2: Construction and materials streambank stabilization	\$ -	\$ 24,990.00	\$ 40,000.00	\$ 25,000.00	\$ -	\$ -	\$ 89,990.00
Task 3: Survey, design, and permitting for Centennial Ditch Diversion Improvement	\$ 28,000.00	\$ -	\$ -	\$ -	\$ -	\$ -	\$ 28,000.00
Task 4: Survey, design, and permitting for SLV Canal Headgate	\$ 32,000.00	\$ -	\$ -	\$ -	\$ -	\$ -	\$ 32,000.00
Task 5: Survey and Design for Rio Grande 2 improvement project	\$ 16,000.00	\$ -	\$ -	\$ -	\$ -	\$ -	\$ 16,000.00
Task 6: Monitoring	\$ -	\$ -	\$ -	\$ -	\$ 10,000.00	\$ -	\$ 10,000.00
Task 7: Project Management, Outreach and Education	\$ 12,000.00	\$ -	\$ -	\$ -	\$ -	\$ 4,000.00	\$ 16,000.00
Task 8: Project Administration	\$2,000	\$ -	\$ -	\$ -	\$ -	\$ -	\$ 2,000.00
TOTAL	\$ 90,000.00	\$ 24,990.00	\$ 60,000.00	\$ 25,000.00	\$ 10,000.00	\$ 4,000.00	\$ 213,990.00
PERCENT OF TOTAL BUDGET	42%	12%	28%	12%	5%	2%	100.00%

* Pending Funds

Timeline Table for the Rio Grande State Wildlife Area Design Project								
TASKS	Year 1: 2017				Year 2: 2018			
	1st Quarter	2nd Quarter	3rd Quarter	4th Quarter	1st Quarter	2nd Quarter	3rd Quarter	4th Quarter
Task 1: Survey and Design for streambank stabilization								
Task 2: Construction of streambank stabilization and riparian restoration								
Task 3: Survey, design and permitting for Centennial Ditch diversion improvement								
Task 4: Survey, design and permitting for SLV Canal headgate improvement								
Task 5: Survey, design and permitting for Rio Grande 2 diversion improvement								
Task 6: Monitoring/Evaluation								
Task 7: Project Management, Outreach and Education								
Task 8: Project Administration								

Final Deliverable and Billing - January 31, 2019

Exhibit B: Maps

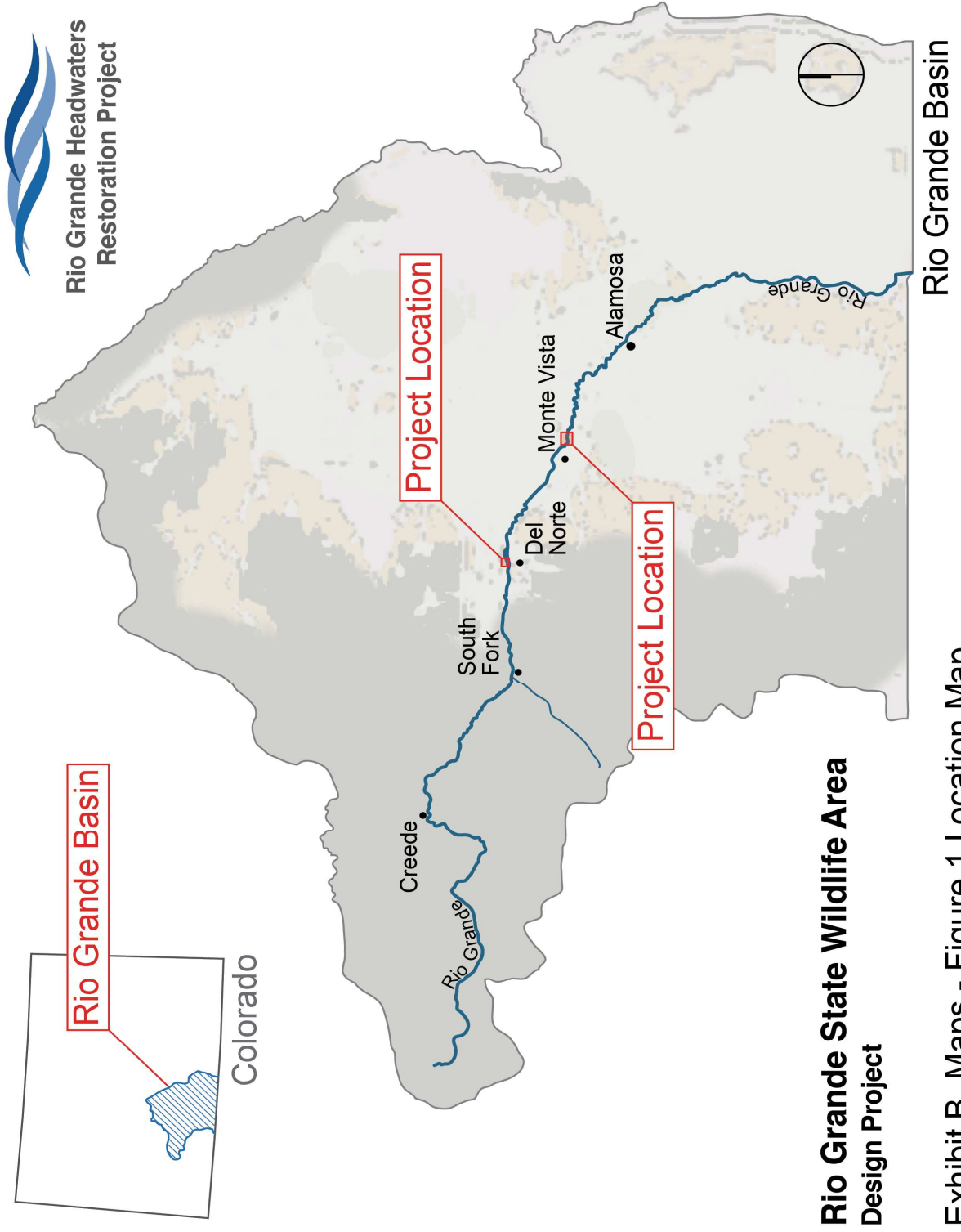


Exhibit B. Maps - Figure 1 Location Map

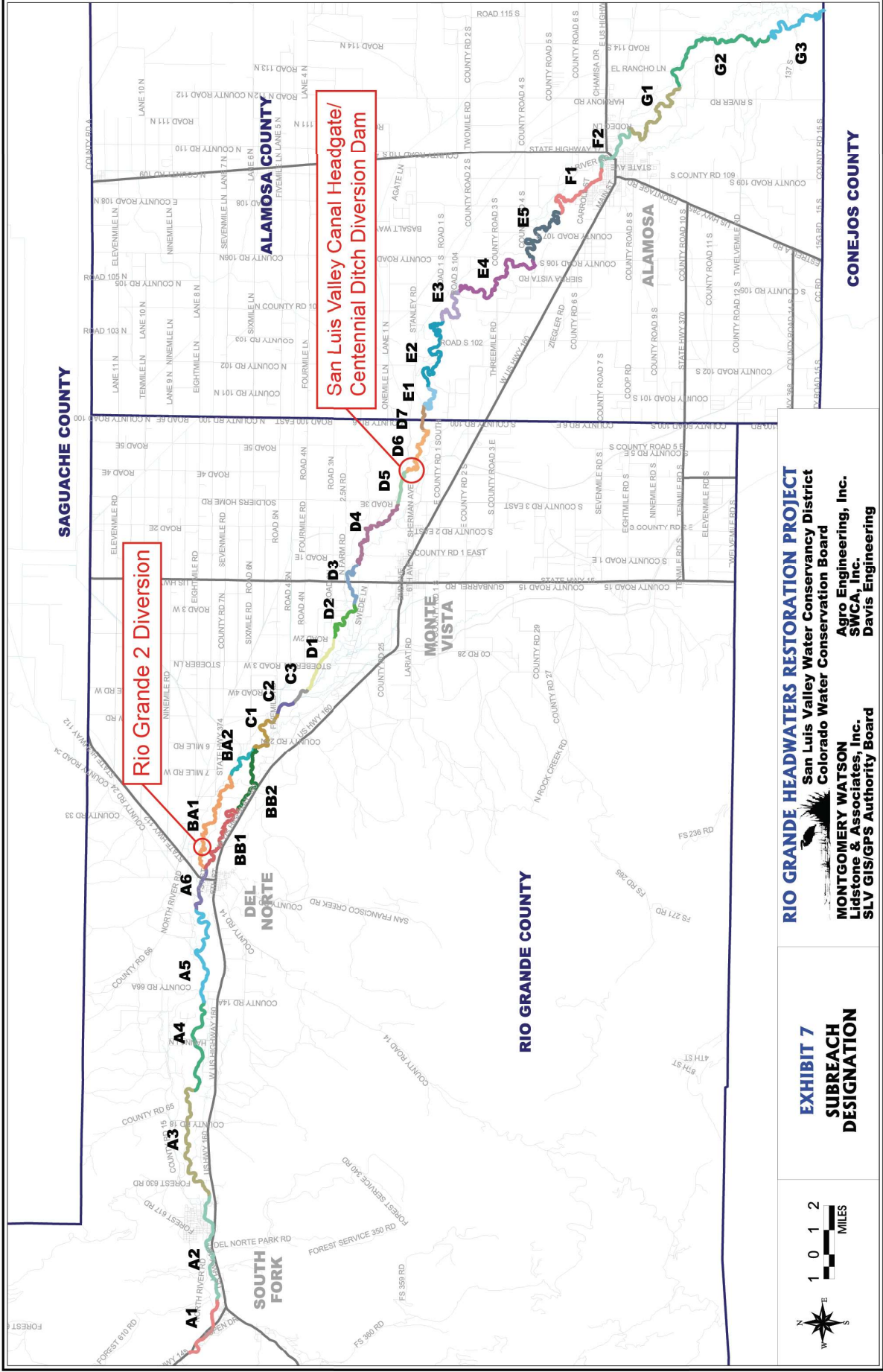
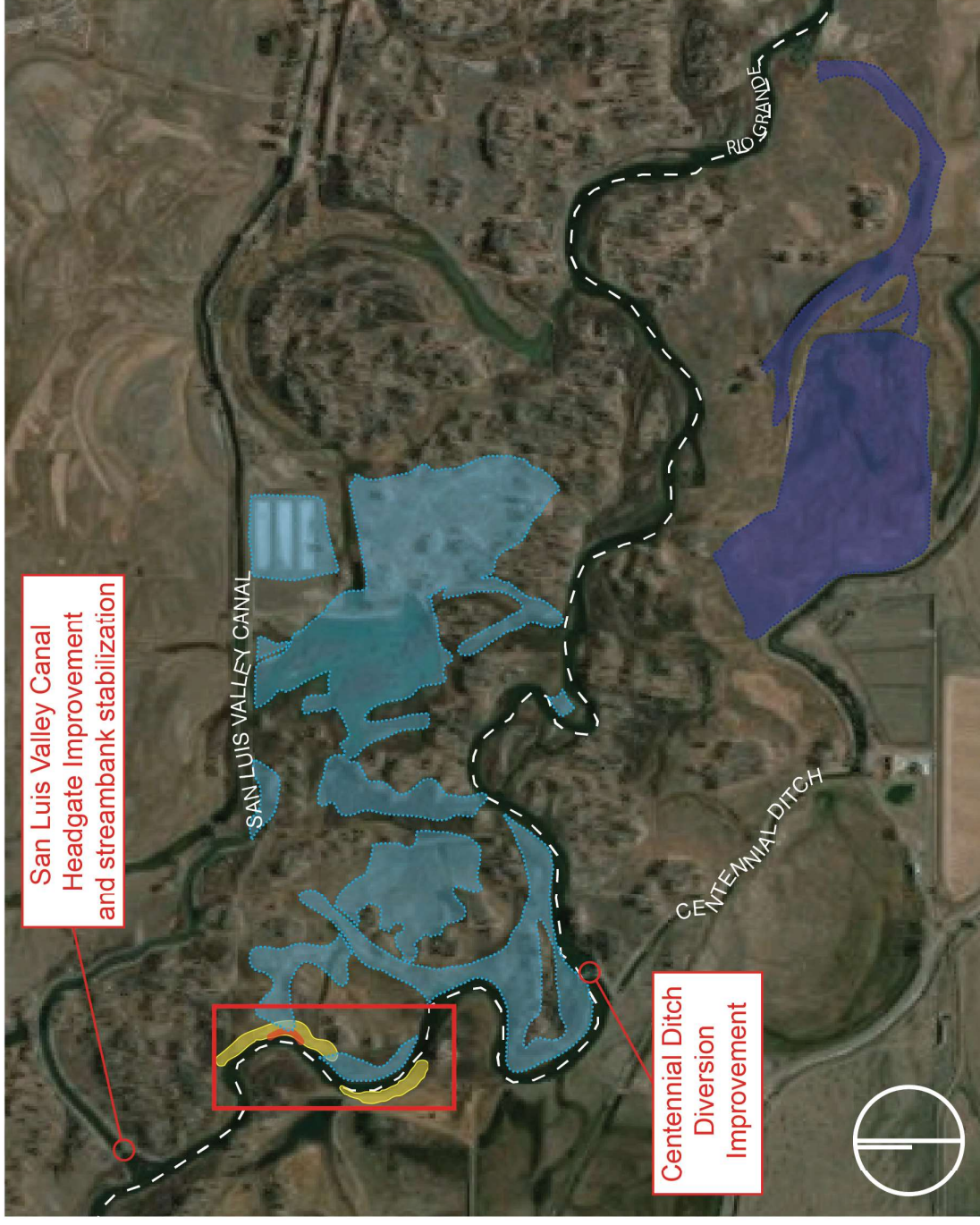
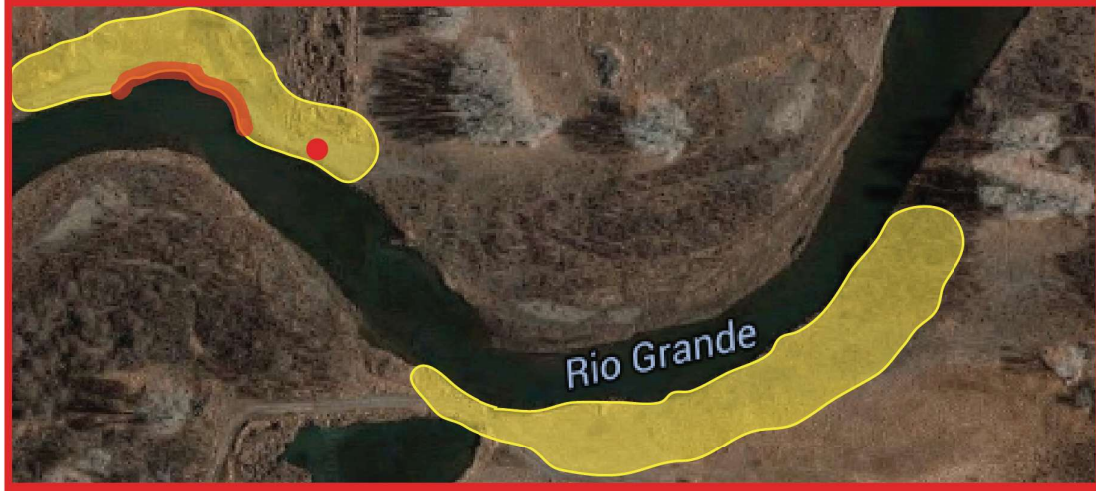


Exhibit B. Maps - Figure 2



- Jurisdictional wetlands watered by Centennial Headgate (35 acres)
- Jurisdictional wetlands watered by siphon (65 acres)
- Streambank stabilization and riparian restoration areas
- This streambank is eroding at an accelerated rate and threatening infrastructure

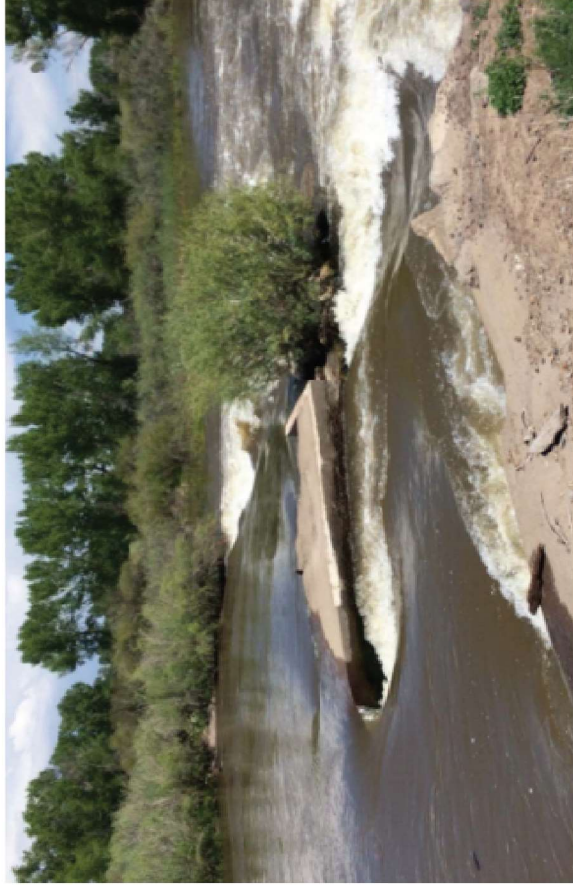
Exhibit B. Maps - Figure 3 Project Map



CPW Siphon and Wetlands



San Luis Valley Canal Headgate



Centennial Ditch Diversion Dam



Rio Grande 2 Diversion

Exhibit B: Maps

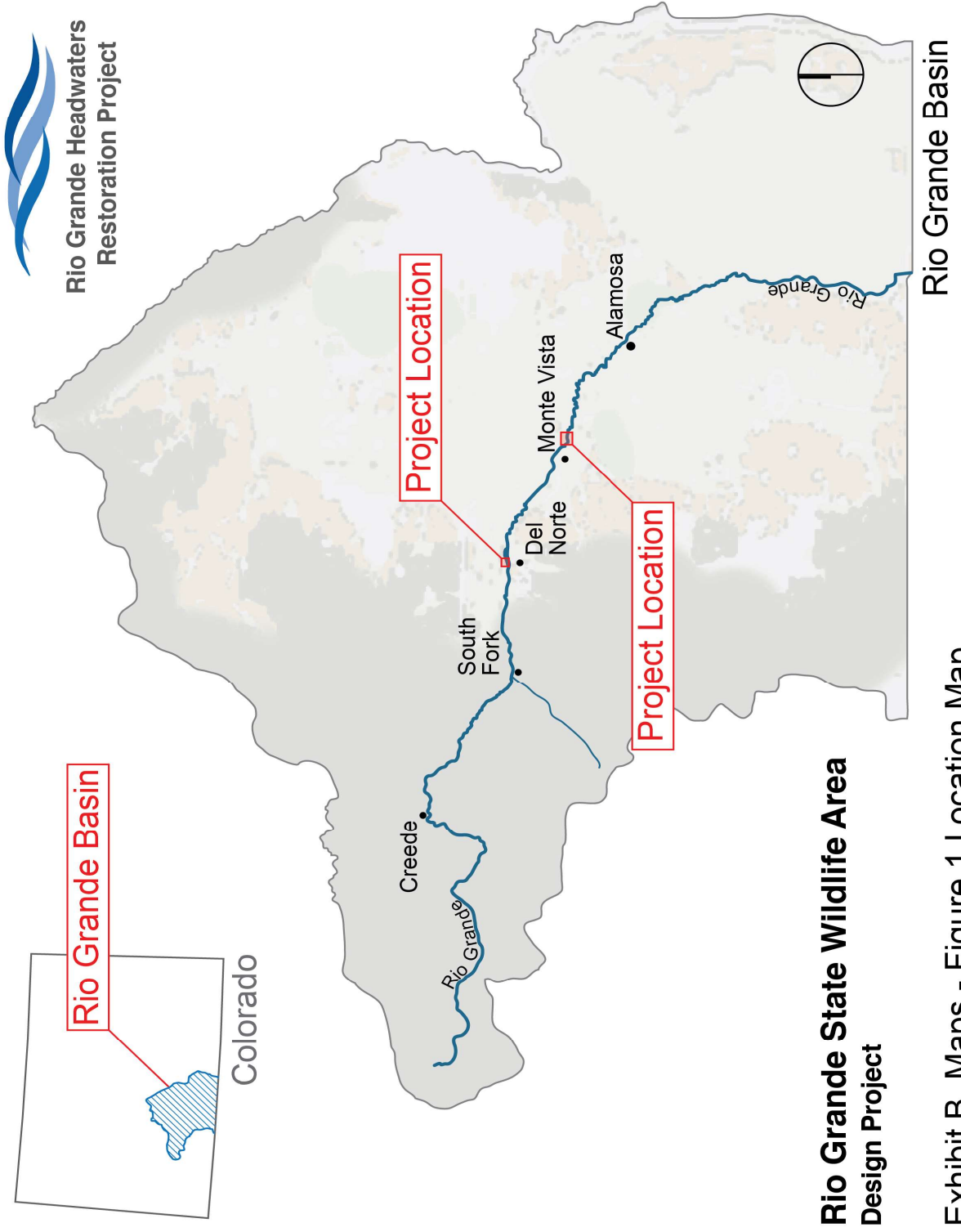


Exhibit B. Maps - Figure 1 Location Map

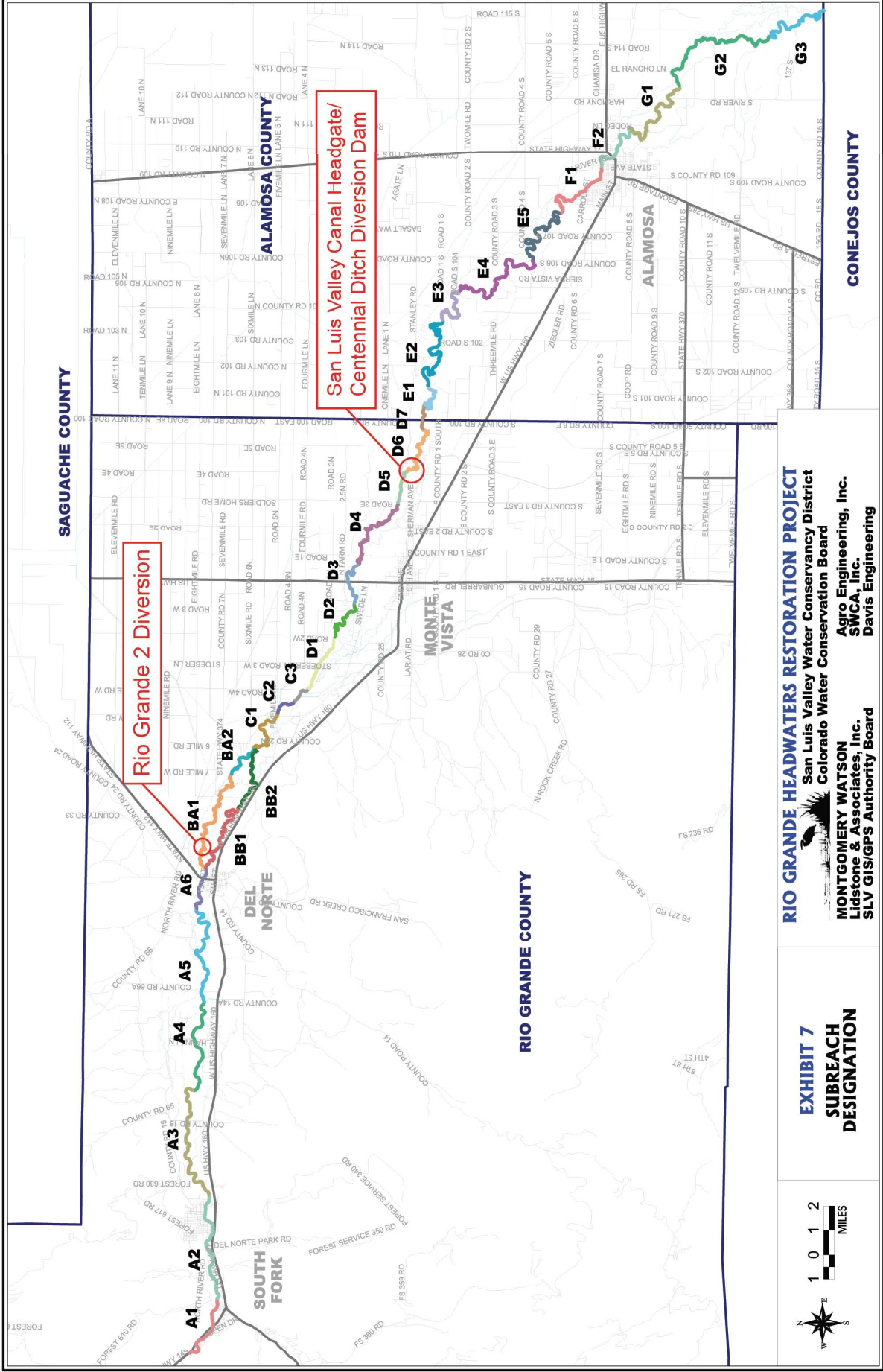
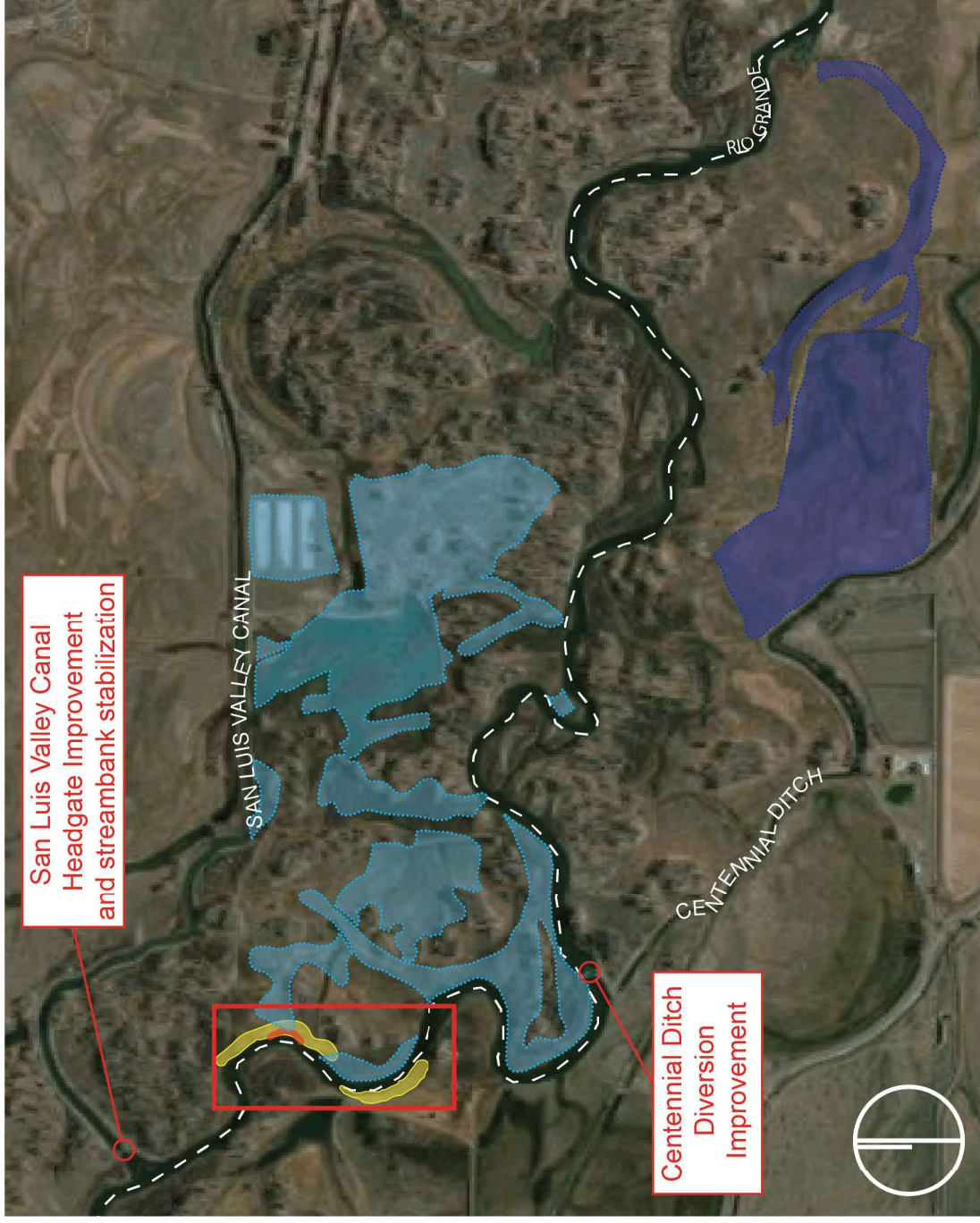
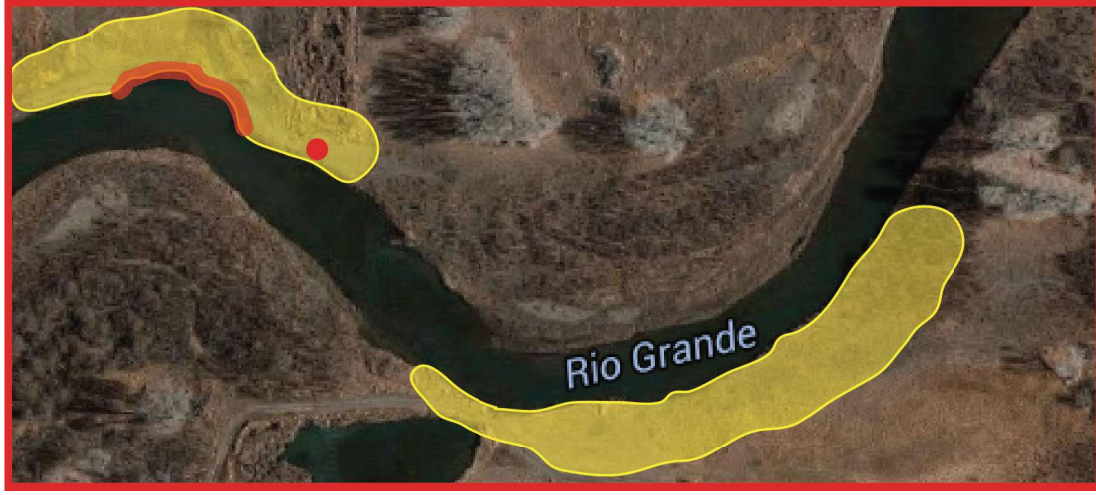


Exhibit B. Maps - Figure 2



- Jurisdictional wetlands watered by Centennial Headgate (35 acres)
- Jurisdictional wetlands watered by siphon (65 acres)
- Streambank stabilization and riparian restoration areas
- This streambank is eroding at an accelerated rate and threatening infrastructure

Exhibit B. Maps - Figure 3 Project Map



CPW Siphon and Wetlands



San Luis Valley Canal Headgate



Centennial Ditch Diversion Dam



Rio Grande 2 Diversion

Water Supply Reserve Fund – Grant and Loan Program
Water Activity Summary Sheet
May 17-18, 2017
Agenda Item 11(a)

Applicant & Grantee: Colorado Rio Grande Restoration Foundation

Water Activity Name: Rio Grande State Wildlife Area Design Project

Water Activity Purpose: Agricultural Implementation

County: Rio Grande

Drainage Basin: Rio Grande

Water Source: Rio Grande

Amount Requested: \$90,000 Rio Grande Basin Account

Matching Funds: Applicant Match = \$123,990

- 137.8% of the Basin Account request (meets 25% min)
- 57.9% of the total project cost of \$213,990

Staff Recommendation:
Staff recommends approval of up to \$90,000 from the Rio Grande Basin Account to help fund the project titled: Rio Grande State Wildlife Area (RGSWA) Design Project.

Water Activity Summary: WSRF grant funds, if approved, will help the Colorado Rio Grande Restoration Foundation improve agricultural irrigation infrastructure while addressing multiple environmental and recreational concerns. The RGSWA Design Project plans to stabilize 1000 ft. of stream, restore one acre of habitat, and develop designs for three diversion improvement projects. The designs include the survey and permitting for improvements to the San Luis Valley (SLV) Canal Headgate, Centennial Ditch Diversion, and the Rio Grande 2 Diversion, resulting in three ‘shovel ready’ improvement projects. The implementation of these projects, along with the proposed streambank stabilization and riparian restoration will significantly improve river health and water quality for fisheries, support a safer river for recreation, increase agricultural diversion efficiency, and protect the water supply to the complex wetland system on the RGSWA. The project brings together a diverse group of project partners united with a common goal to improve the river for agriculture, community enjoyment, and wildlife that depend on riparian ecosystems.

Discussion: As described in the Rio Grande Basin Roundtable Chair’s Recommendation Letter, this project was supported and recommended for approval by the roundtable on March 14, 2017. Currently, the Rio Grande flowing through the RGSWA is unstable. River dynamics are eroding streambanks at an accelerated rate near water control infrastructure, threatening water delivery the SLV Canal and the Centennial Ditch, as well as the Colorado Parks and Wildlife (CPW) siphon. Under flood conditions, CPW managers are concerned that the Rio Grande will wash away the siphon and change channel course, cutting off water delivery to the Centennial Ditch. This would eliminate CPW’s ability to maintain the 100 acres of critical wetlands that are irrigated by the siphon and Centennial Ditch. This project addresses these concerns and protects critical wetland and riparian habitat through streambank stabilization, riparian restoration, and the replacement of aging irrigation infrastructure.

The project meets the following Rio Grande Basin Implementation Plan Goals numbers 1, 2, 4, 5, 6, 9, 11, 12, and 14. In addition to meeting numerous BIP goals, the project aligns with the Colorado Water Plan's policy to identify and implement projects to meet community and agricultural water needs, while balancing the needs of the environment and recreation (see Critical Goals and Actions as identified in *Chapter 10.3.D: Agriculture, 10.3.E. Storage, and 10.3.F. Watershed Health, Environment, and Recreation.*)

Issues/Additional Needs: No issues or additional needs have been identified.

Eligibility Requirements: The application meets requirements of the three subsections of the Eligibility Requirements: General Eligibility, Entity Eligibility, and Water Activity Eligibility.

Funding Match Requirements: This application meets the Basin Account Matching requirements.

Evaluation Criteria: This activity has undergone review and evaluation and staff has determined that it satisfies the Evaluation Criteria. Please refer to Basin Roundtable Chair's Recommendation Letter and the WSRF Grant Application for applicant's detailed response.

Funding Summary / Matching Funds:

<u>Funding Source</u>	<u>Cash</u>	<u>In-Kind</u>	<u>Total</u>
CPW Wetlands Program	\$24,990	\$0	\$24,990
Colorado Parks & Wildlife	\$0	\$10,000	\$10,000
Great Outdoors Colorado Habitat Restoration	\$25,000	\$0	\$25,000
North American Wetlands Conservation Act (pending)	\$60,000	\$0	\$60,000
Colorado Rio Grande Restoration Foundation	\$0	\$4,000	\$4,000
Subtotal	\$109,990	\$14,000	\$123,990
WSRF Rio Grande Basin Account	\$90,000	\$0	\$90,000
Total Project Costs	\$199,990	\$14,000	\$213,990

CWCB Project Manager: Megan Holcomb

All products, data, and information developed as a result of this grant must be provided to the CWCB in hard copy and electronic format as part of the project documentation. Information will be made widely available to Basin Roundtables and the general public and will help promote the development of a common technical platform. In accordance with the revised WSRF Criteria and Guidelines, staff would like to highlight additional reporting and final deliverable requirements specified below.

Reporting: The applicant shall provide the CWCB a progress report every 6 months, beginning from the date of the executed contract. The progress report shall describe the completion or partial completion of the tasks identified in the scope of work including a description of any major issues that have occurred and any corrective action taken to address these issues.

Final Deliverable: The applicant shall provide the CWCB a final report summarizing project completion that may contain photographs, meeting summaries, and engineering reports.

Engineering: All engineering work (as defined in the Engineers Practice Act (§12-25-102(10) C.R.S.)) performed under this grant shall be performed by or under the responsible charge of a professional engineer licensed by the State of Colorado to practice engineering.

Rio Grande Basin Roundtable
623 Fourth Street
Alamosa, CO 81101
cwcd1971@hotmail.com

March 20, 2017

James Eklund and CWCB Board Chair
Colorado Water Conservation Board
1313 Sherman St., Room 721
Denver, CO 80203

Re: WSRA Application for the Upper Rio Grande Assessment

Dear Mr. Eklund,

On behalf of the Rio Grande Basin Roundtable (Roundtable), please accept this letter of support for the Rio Grande State Wildlife Area (RGSWA) Design Project sponsored by the Colorado Rio Grande Restoration Foundation (CRGRF). The Water Supply Reserve Account Application for the RGSWA Design Project was evaluated by the Roundtable and was approved by voting members at the March 14, 2017 Roundtable meeting.

The Roundtable recognizes that the RGSWA Design Project addresses both agricultural and environmental and recreational Basin needs. The Project will result in the survey, design, and permitting for improvements to the SLV Canal Headgate, Centennial Ditch Diversion, and the Rio Grande 2 Diversion, resulting in three shovel ready diversion improvement projects. The implementation of these projects, partnered with streambank stabilization and riparian restoration, will significantly improve river health and water quality for the fisheries and other beneficiaries, support a safer river for recreation, increase agricultural diversion efficiency, and protect the water supply to the complex wetland system on the RGSWA. The RGSWA Project meets the following Rio Grande Basin Implementation Plan Goals:

1. Protect, preserve, and/or restore the sustainability of the Rio Grande Basin watersheds by focusing on watershed health and ecosystem function.
2. Protect and preserve the doctrine of prior appropriation and vested water rights, and fully utilize Colorado's compact entitlements as specified under the Rio Grande and Costilla Creek Compacts.
4. Operate, maintain, rehabilitate, and create necessary infrastructure to meet the Basin's long-term water needs including storage.
5. Manage water use to sustain optimal agricultural economy throughout the Basin's communities.
6. Support the development of projects and methods that have multiple benefits for agricultural, municipal and industrial, and environmental and recreational water needs.
9. Make progress towards meeting applicable water quality standards throughout the Basin.
11. Protect, preserve, and enhance terrestrial and aquatic wildlife habitats throughout the basin.

12. Conserve, restore, and maintain wetlands and riparian areas for the benefit of a healthy watershed.
14. Maintain and enhance water dependent recreational activities.

In addition to meeting many of the BIP goals, this project aligns the Colorado Water Plan's policy to identify and implement projects to meet community and agricultural water needs, while balance the needs of the environment, and recreation.

Thank you for your consideration of this application.

Sincerely,

A handwritten signature in cursive script, appearing to read "Nathan Coombs".

Nathan Coombs
Chair, Rio Grande Basin Roundtable