

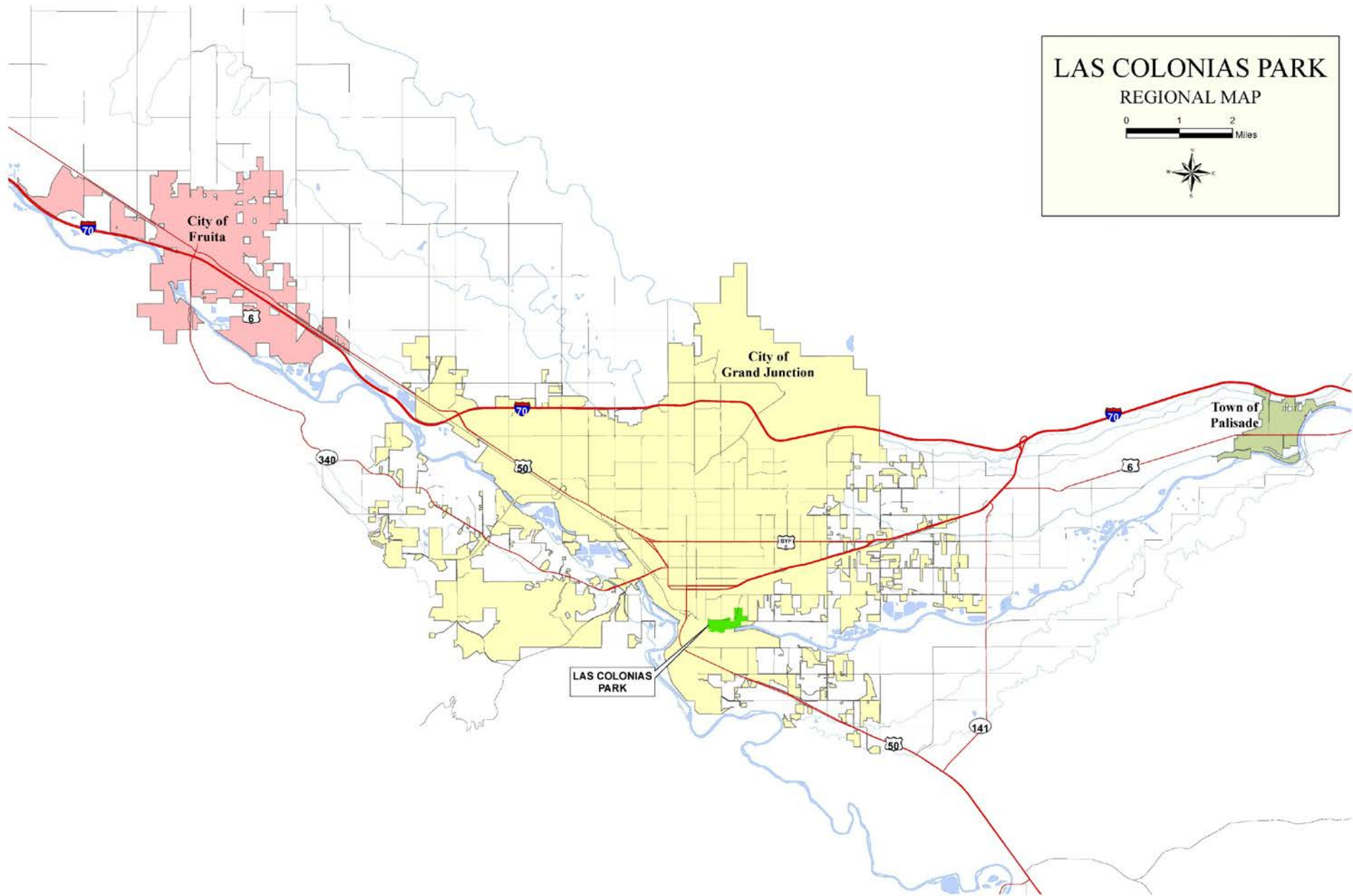
Las Colonias Park River Recreation Feature



Colorado Basin
Roundtable Presentation

LAS COLONIAS PARK REGIONAL MAP

0 1 2
Miles



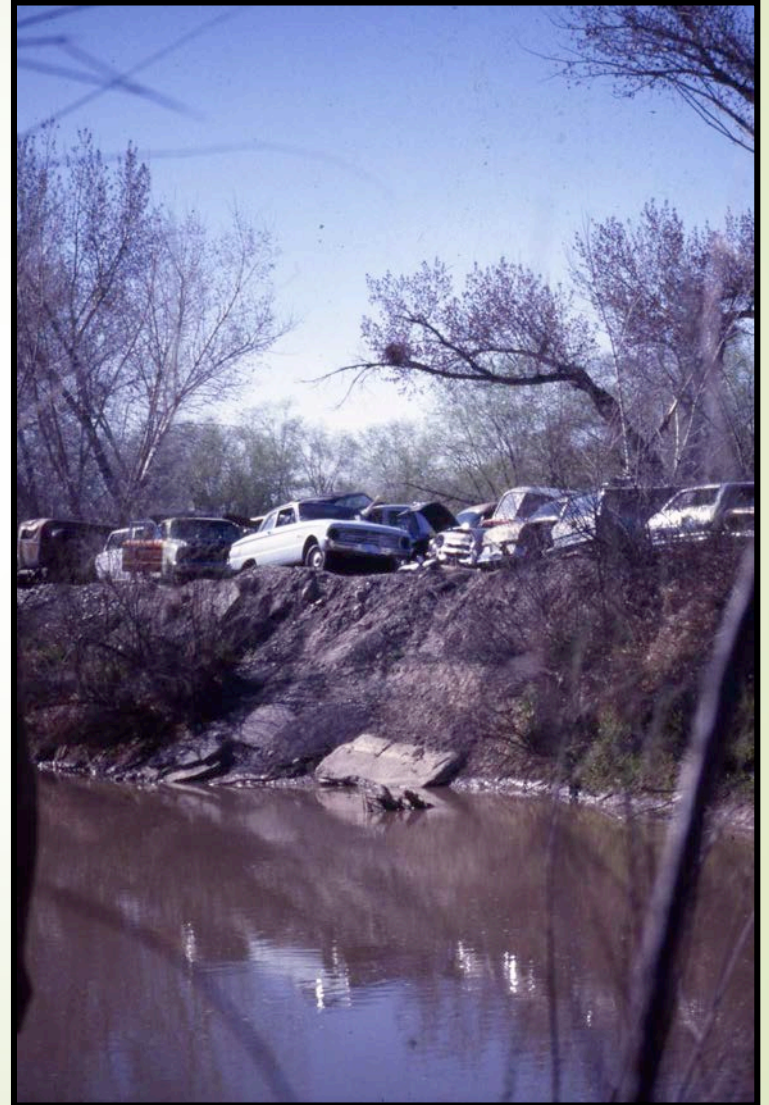
Las Colonias History

- ▶ 1920's Sugar beet farm worker housing
- ▶ 1950-1970 Uranium processing mill
- ▶ 1972 Remediation process began



Las Colonias History

- 1985-1991 Restoration of Watson Island
- 1997 Deeded to City of Grand Junction
- 1998 1st Master Plan
- 2008 2nd Master Plan
- 2013 3rd Master Plan



Las Colonias History

- 2015 Phase I Complete
- 2017 Amphitheater Complete



2017 Master Plan



2013 & 2016 Slough Enhancements

- 2013 test channel
- 2016 full channel
 - In collaboration with Amphitheater construction
 - Designed to have nearly year-round water flow

Existing Conditions - 2017



Existing Conditions - 2017

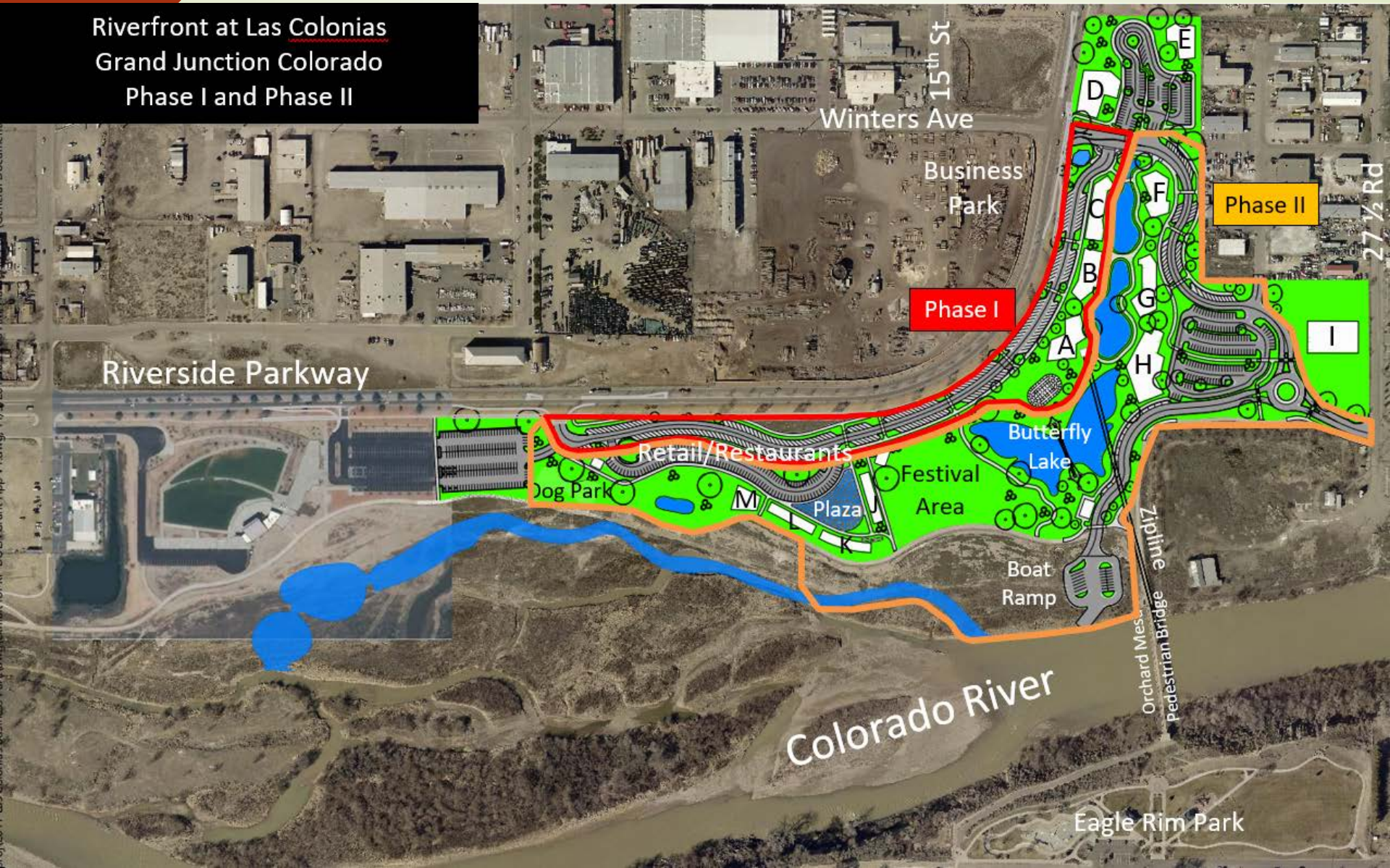


Existing Conditions - 2017



Business Park

Riverfront at Las Colonias
Grand Junction Colorado
Phase I and Phase II




Conceptual Design





Project Elements

- Additional inlet channel for greater water flow throughout the year
- Extension of existing channel
- Multiple habitat boulders and riffle enhancements
- Step boulder ponds
- Revegetation



Project's Support of Colorado Water Plan

- Increase aquatic side channel habitat
- Enhance economic value of recreational water use
- Improve the condition of riparian area
- Promote educational opportunities



Budget

Source	Amount
City of Grand Junction (secured)	\$610,297
Colorado Basin Roundtable	\$10,000
One Riverfront (secured)	\$15,000
Colorado Garden Foundation (requested)	\$15,000
Water Plan Grant (requested)	\$150,000
Great Outdoors Colorado (requested Nov 2018)	\$350,000
CWCB Grant	\$99,703
Total	\$1.25 million



Timeline

- Funding Secured – Spring 2019
- New Slough Entry – Spring 2019
- Balance of Slough Enhancements – August 2019
- Revegetation – September/October 2019



Questions

