

Blue River

Integrated Water Management Plan

September 24, 2018



Dan Omasta

Grassroots Coordinator
Colorado Trout Unlimited



Agenda

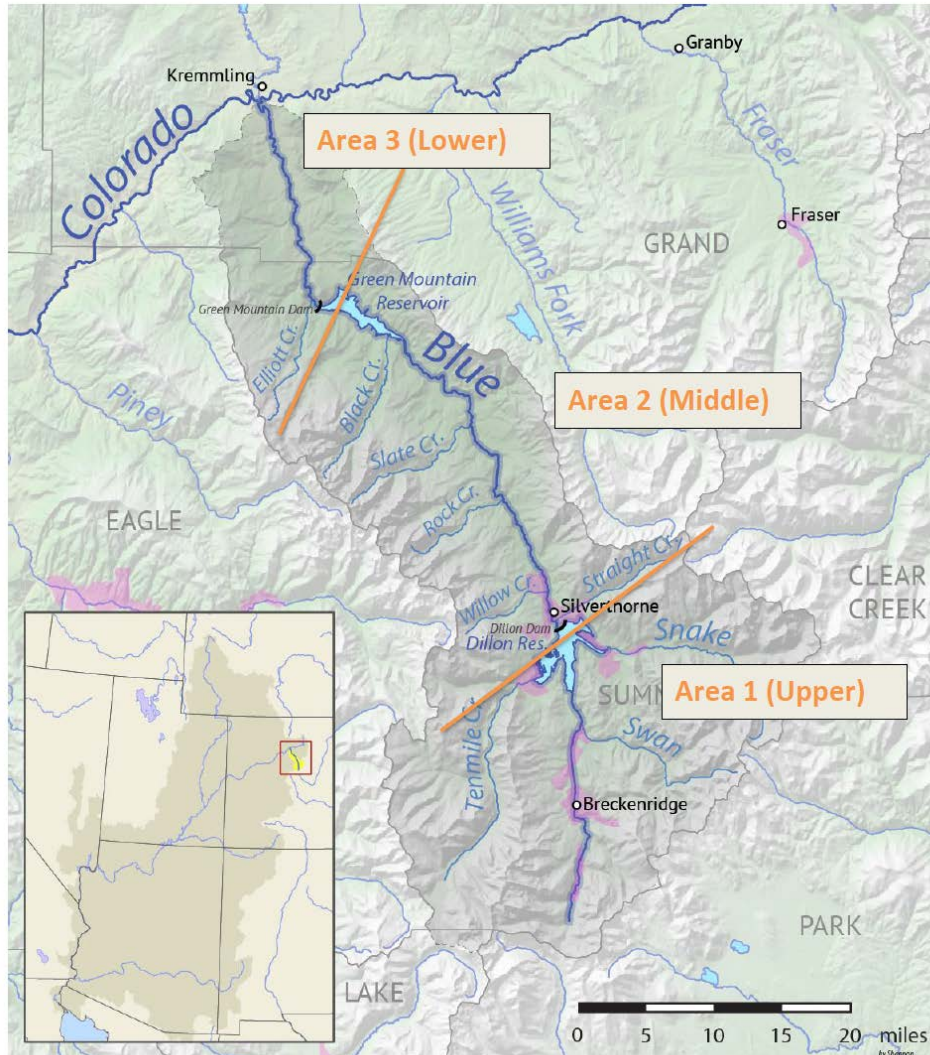


Project Goals

- Understand and quantify current & future consumptive & non-consumptive use
- Identify threats to environment, recreation, water quality, water users, and communities
- Empower greater public outreach, collaboration, and data sharing among stakeholders
- Develop project opportunities to mitigate identified threats or changes in the Basin
- Provide high-quality data to decision makers & partners

Photo Credit: Dan Omasta

Three Unique Stream Reaches

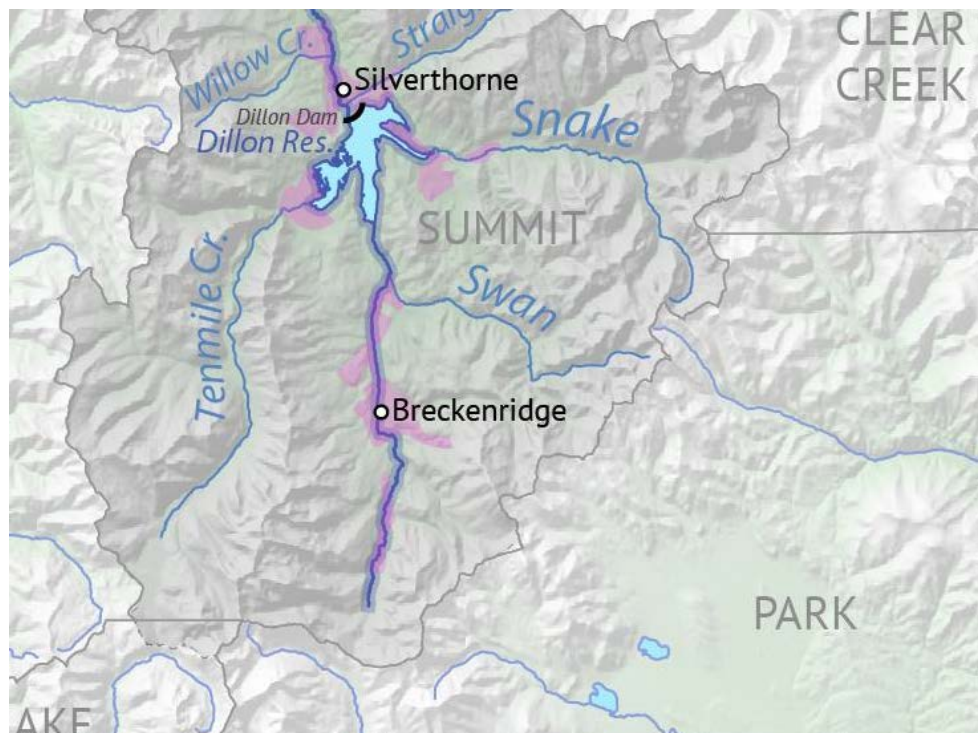


Area 1 (Upper)
Above Dillon Reservoir
(Swan, Snake, Ten Mile, Blue)

Area 2
Dillon Res. To Green Mountain Res.
(Mainstem & tributaries)

Area 3
Below Green Mountain Res. To
Confluence
(Mainstem & tributaries)

Area 1



Area 1 (Upper) Above Dillon Reservoir (Swan, Snake, Ten Mile, Blue)

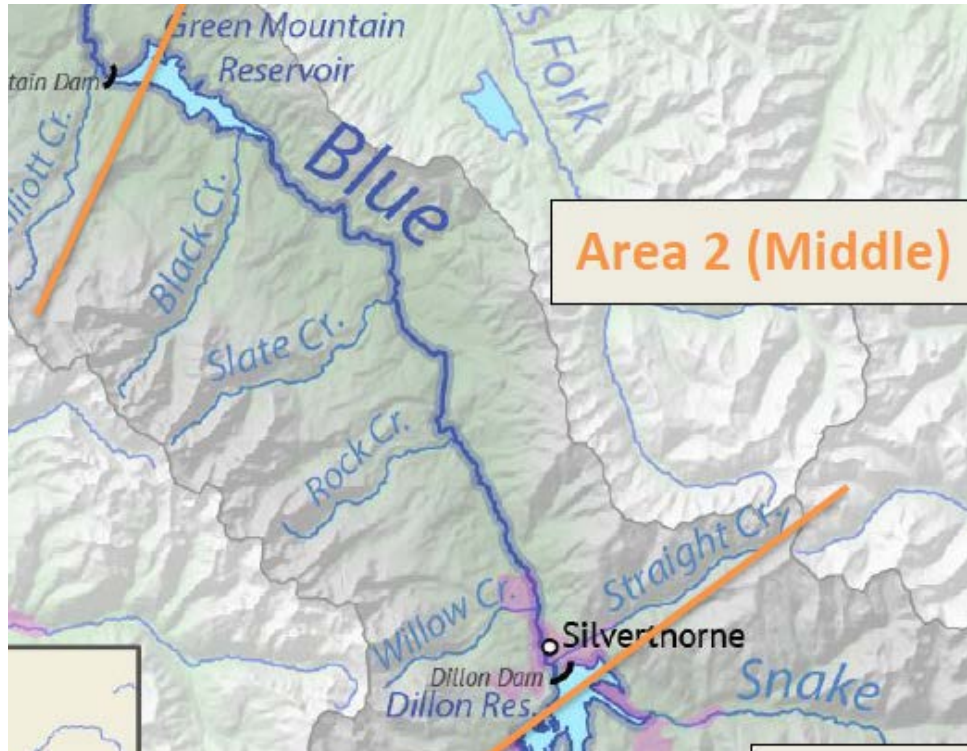
Issues & Opportunities

- Water quality (mining & natural)
- Snowmaking
- “Dry-up”
- Forests to Faucets & wildfire mitigation

IWMP Objectives

- Water-focused literature review
- Project & needs inventory
- Stakeholder engagement
- Community education

Area 2



Area 2 (Middle)

Dillon Reservoir to Green Mountain Reservoir

Issues & Opportunities

- “Gold Medal” de-listing
- Declining fishery
- Increased recreational demand
- Urban growth

IWMP Objectives

- Study of causes associated with declining fishery
- Public engagement and education
- Irrigation delivery and application infrastructure needs

Area 3



Area 3 (Lower)

Green Mountain Reservoir to
Confluence

Issues & Opportunities

- Fishery health
- Public access and recreation
- Hydrograph and flow regime
- Sustain agriculture

IWMP Objectives

- Study of causes associated with declining fishery (along w/ Area 2)
- Public engagement and education
- Irrigation delivery and application infrastructure needs



Overlap with CRBRT BIP and IWMP Objectives

- ✍ Protect & restore healthy streams, rivers, lakes, and riparian areas
- ✍ Sustain agriculture
- ✍ Secure safe drinking water
- ✍ Develop local water conscious land use strategies
- ✍ Assure dependable Basin administration and encourage high level of basin-wide conservation

www.coloradotu.org

Dan Omasta

domasta@tu.org