

CWCB Instream Flow Program Planning Workshop

24 January 2018

Colorado Parks and Wildlife Proposals for 2018-2019

Jay W Skinner
CPW ISF Program Specialist
303-291-7260
jay.skinner@state.co.us



Continuation of ISF Quantification Efforts From Prior ISF Workshops Water Division One:

Larimer County Open Space:

- N. Fk. Poudre River
- Lower Cache la Poudre
- Mill Creek and Spring Creek
- North Fork Little Thompson River
- Big Thompson River
- Spring Gulch

Park County:

- Duck Creek
- High Creek Fen

Poudre River Partners:

- Cache la Poudre River (through Fort Collins)



Water Division Two:

CWCB Cucharas River Collaborative Study:

- Cucharas River and Tributaries (in close coordination and consultation with the Cucharas River Collaborative stakeholders)



Water Division Four:

- Little Cimarron River
- Cow Creek
- Kelso Creek

Water Division Five/Six:

- North Fork White River Basin (9 segments from 2017 Workshop)
- South Fork White River Basin (6 segments)

Water Division Seven:

- Upper Dolores River tributaries (5 segments)
- Animas River Tributaries (4 segments)
- West Virginia Gulch
- Piedra, San Juan, and Navajo River Basin Streams (2015 Workshop)



New Potential ISF Recommendations and Proposed Data Collection Efforts by Colorado Parks and Wildlife



Water Division One:

- West Plum Creek (Headwaters to Garber Creek) – Multiple segments are likely
- Native Fish Community



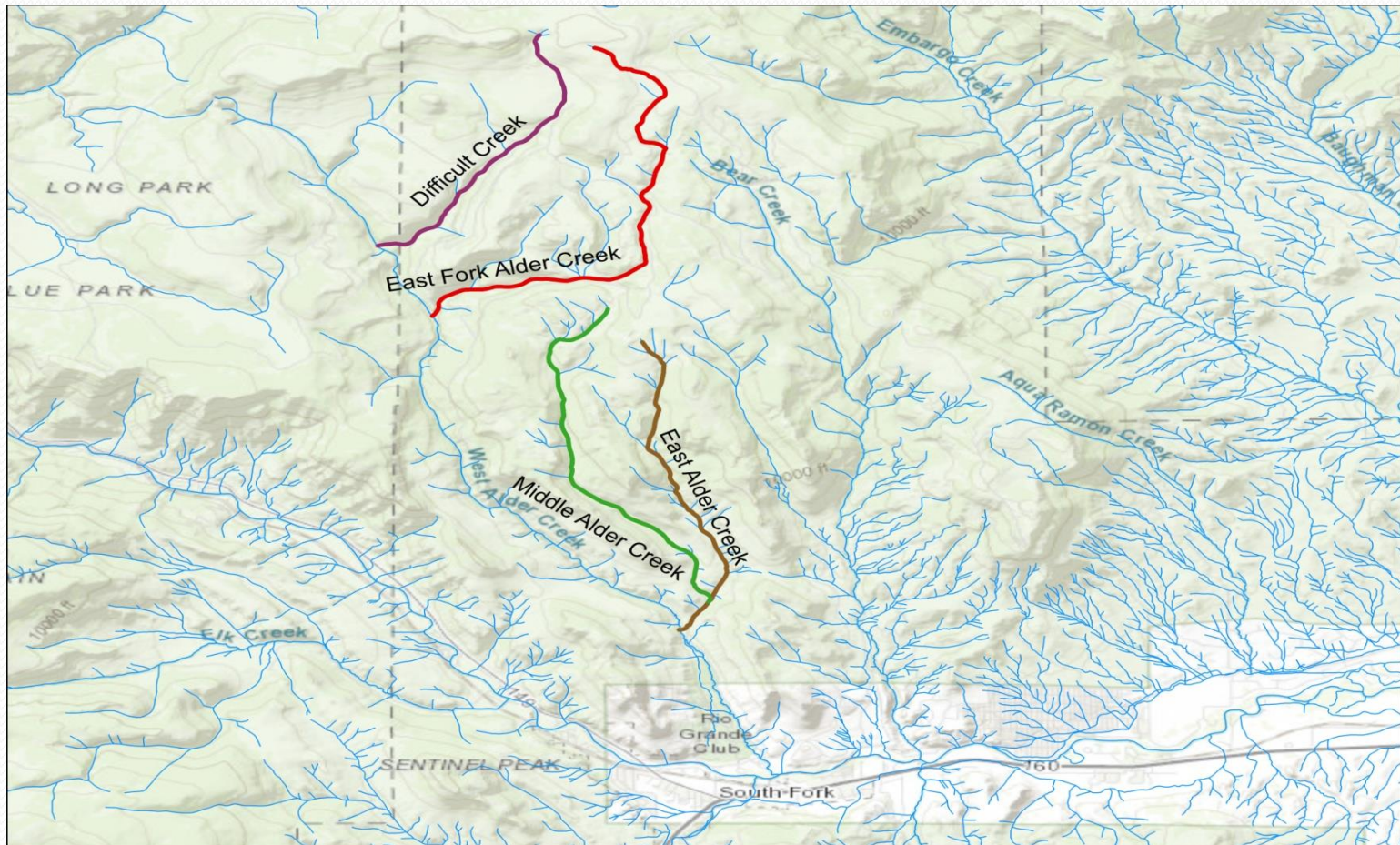
Water Division Three:

Rio Grande Cutthroat streams mostly on public lands on the west side of the San Luis Valley:

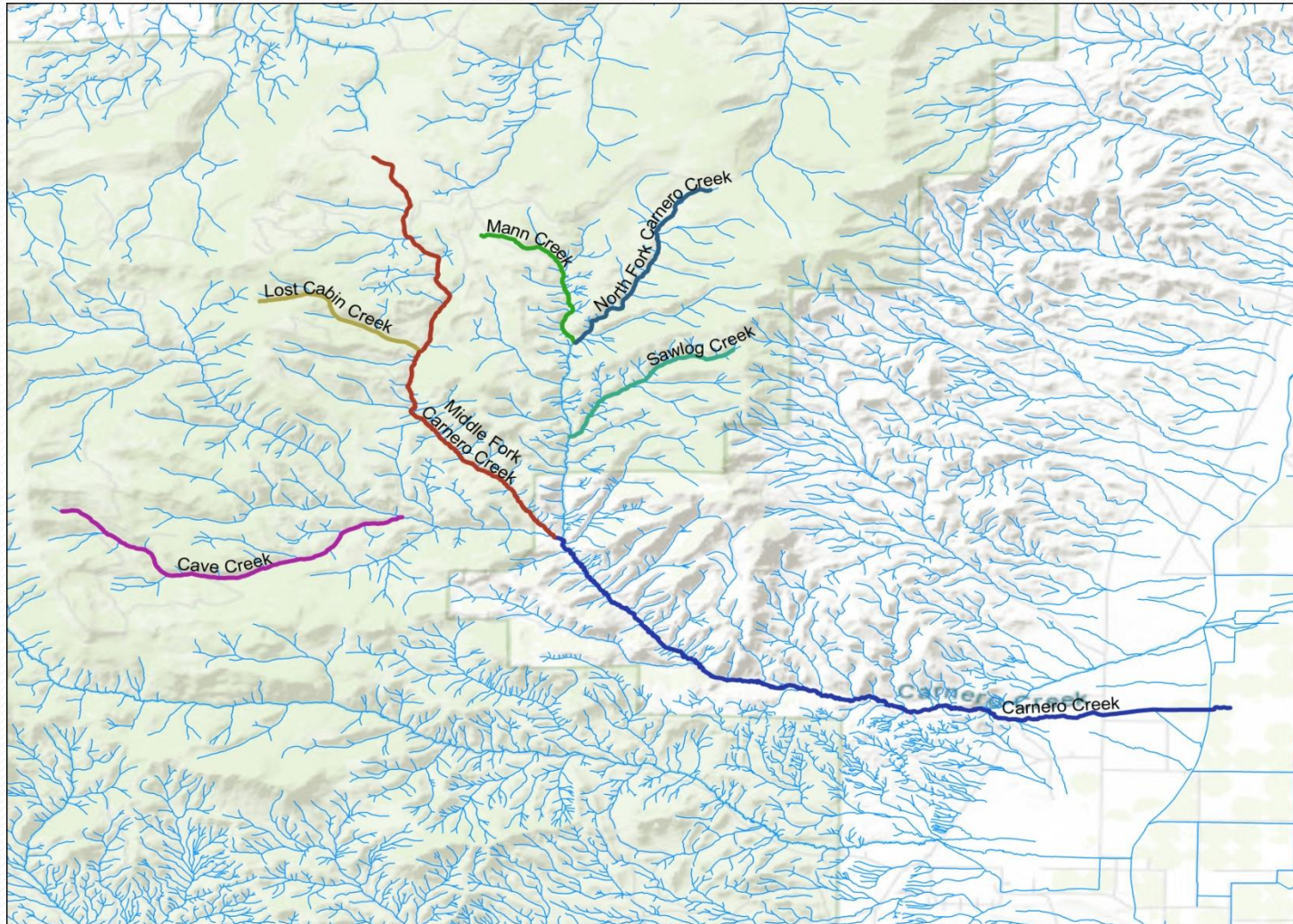
- Difficult Creek
- East Fork of West Alder Creek
- Middle Alder Creek
- East Alder Creek
- Carnero Creek
- Middle Fork Carnero Creek
- North Fork Carnero Creek (upper)
- Cave Creek
- Lost Cabin Creek
- Mann Creek
- Sawlog Creek
- Cat Creek
- North Fork Cat Creek
- South Fork Cat Creek
- Rough Canyon
- Rhodes Gulch
- Cross Creek
- East Pass Creek
- Jacks Creek



Water Division Three Streams



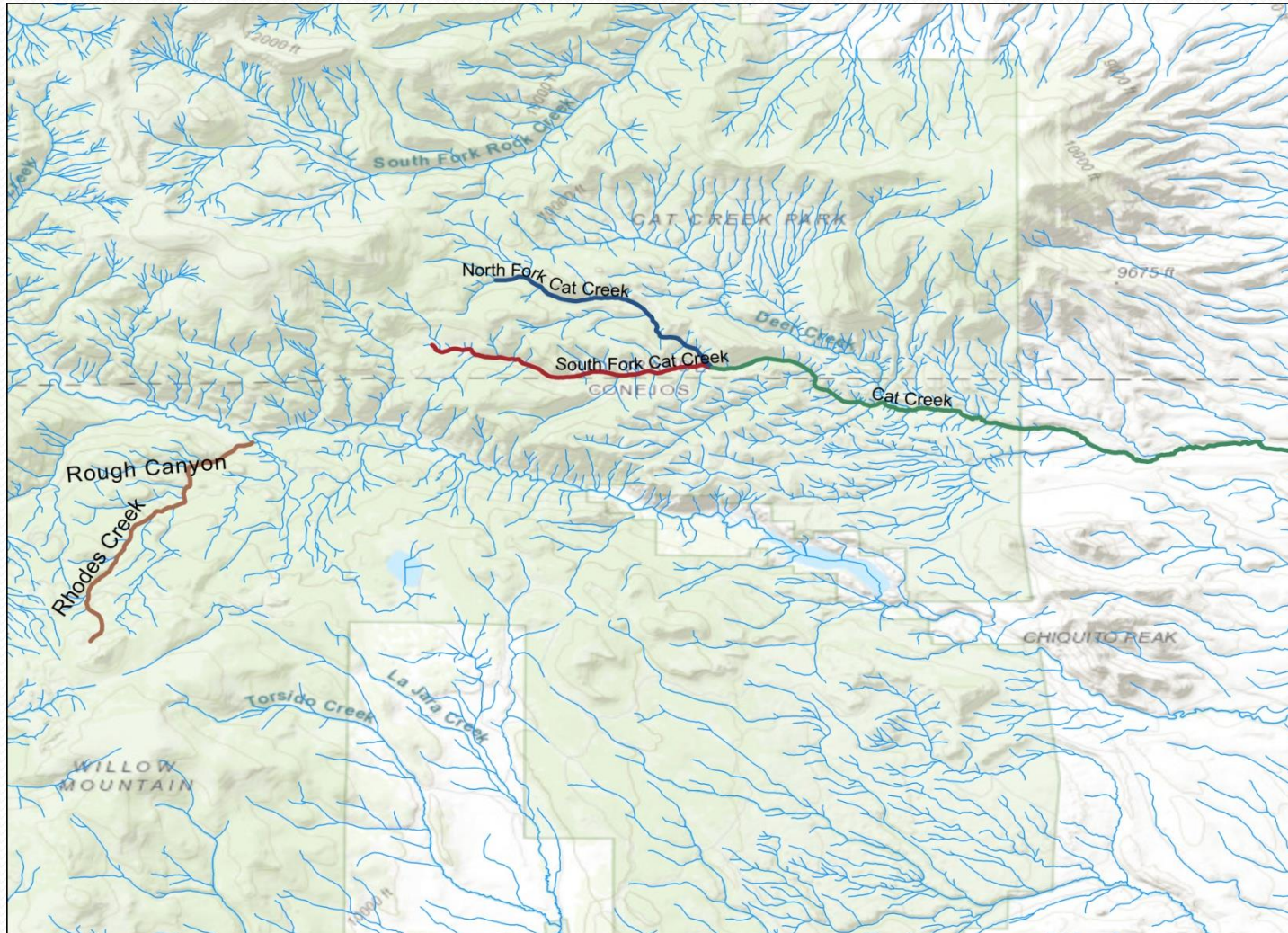
Water Division Three Streams



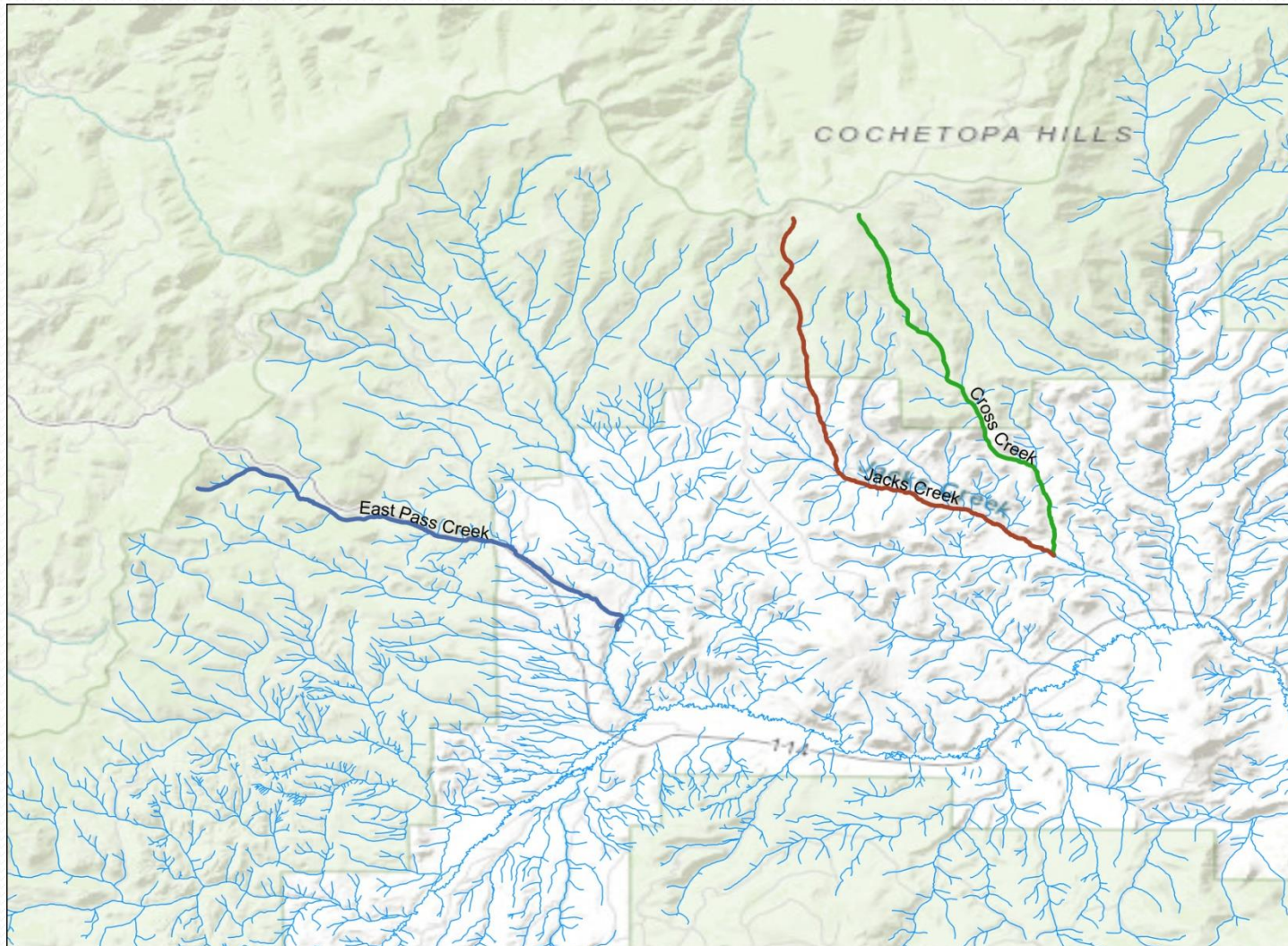
• Del Norte



Water Division Three Streams



Water Division Three Streams



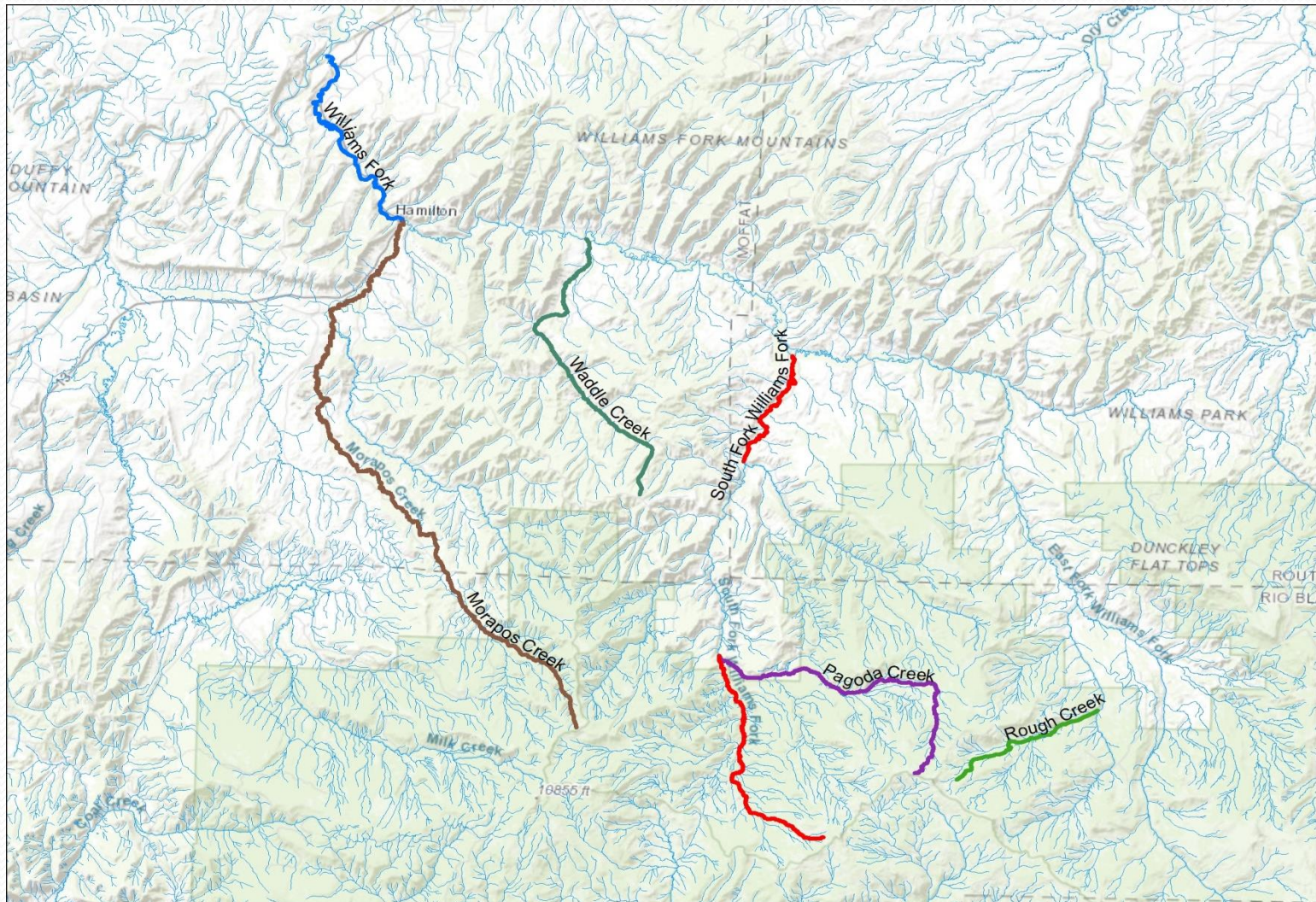
Water Division Six Streams

Colorado River Cutthroat Trout Streams:

- Morapos Creek
- Waddle Creek
- South Fork of the Williams Fork of the Yampa (2 segments)
- Williams Fork of the Yampa River
- Pagoda Creek
- Rough Creek



Water Division Six



Water Division Seven Streams

Colorado River Cutthroat Trout

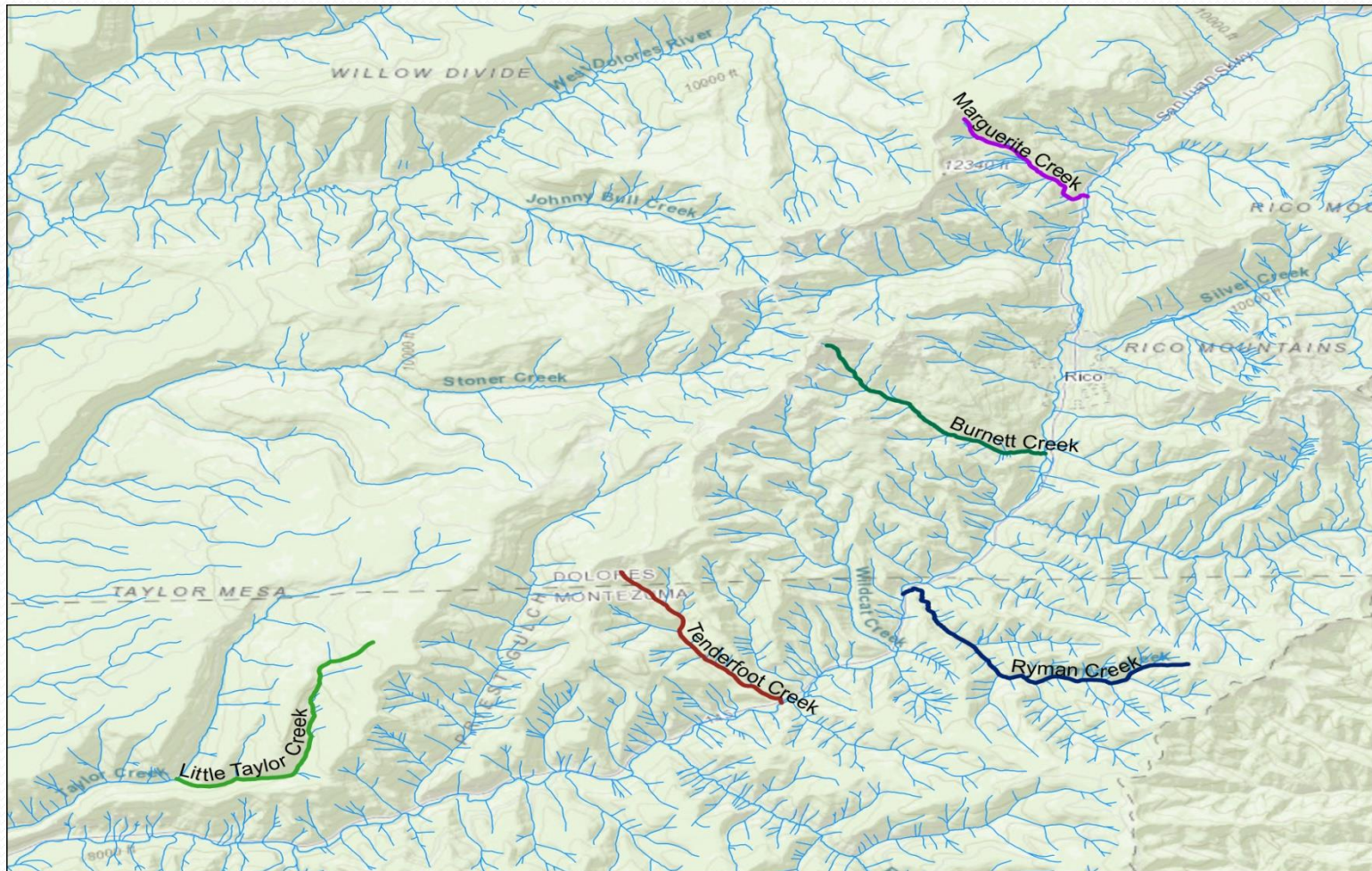
CWCB and Southwest Basin Roundtable supported/funded

Dolores River Anglers (TU) Streams:

- Marguerite Creek
- Burnett Creek
- Ryman Creek
- Tenderfoot Creek
- Little Taylor Creek



Water Division Seven



What is most likely from CPW in 2018 – 2019?

- Based on data collected so far ...
- West Plum Creek
- Baker Creek and Bonnett Creek
- Carnero Creek basin streams (approx 7 segments)
- Kelso Creek
- White River and Williams Fork Yampa River tributaries (5-7 segments)
- Division 7 tributary streams (4 – 6 segments)

Subject to change if supplemental data is needed

Dry conditions – a need for geographic flexibility
Conditions for data collection could be:

- Really good, or
- Really bad



Questions/Comments/Discussion

Jay W Skinner
CPW ISF Program Specialist
303-291-7260
jay.skinner@state.co.us

