

# NORTH PLATTE RIVER BASIN

*Our Water – Our Heritage – Our Future*



[Presentation Group]

[Date]

[Presenter Name]



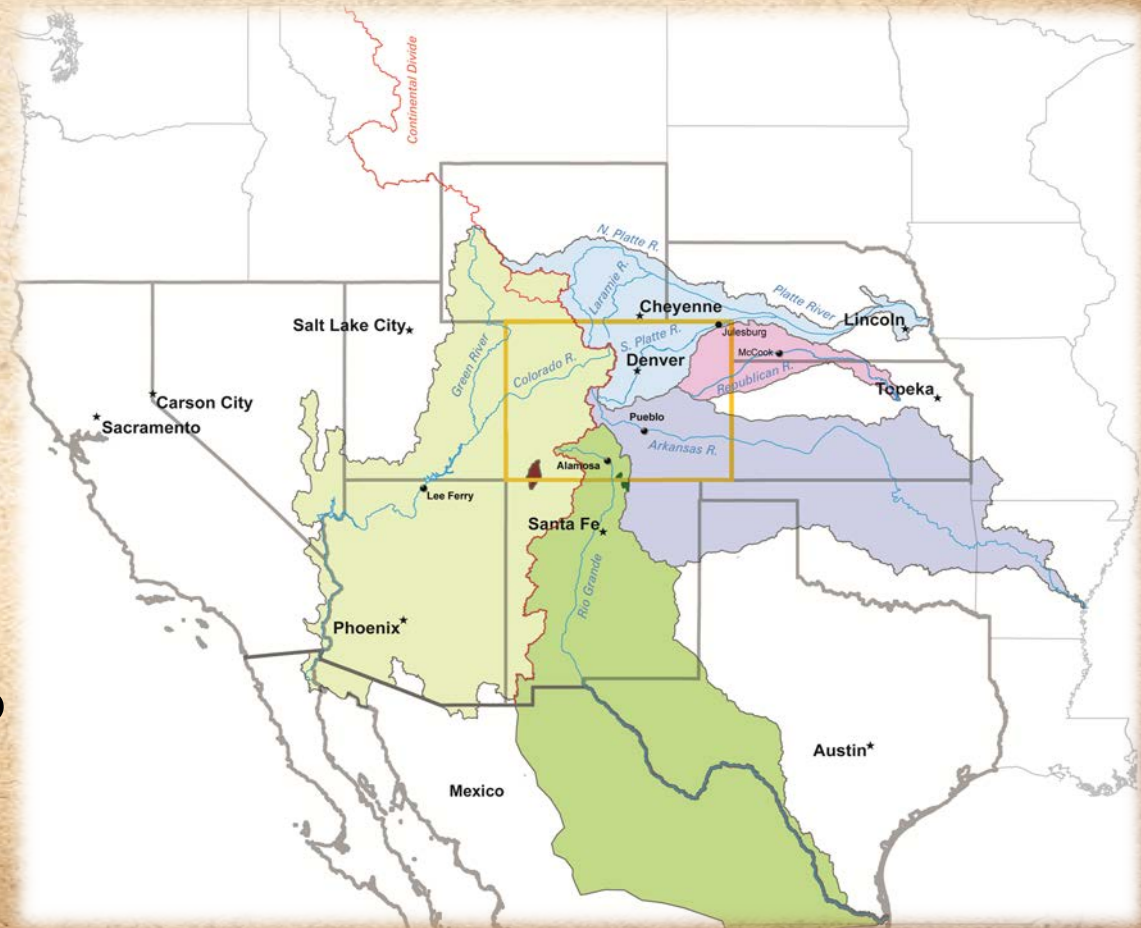
# NORTH PLATTE RIVER BASIN

## Why is water important in Colorado?

A scarce resource due to our semi-arid climate

CO is a headwaters state and must deliver water to downstream states

A basin is an area of land that drains into a common waterway





# NORTH PLATTE RIVER BASIN

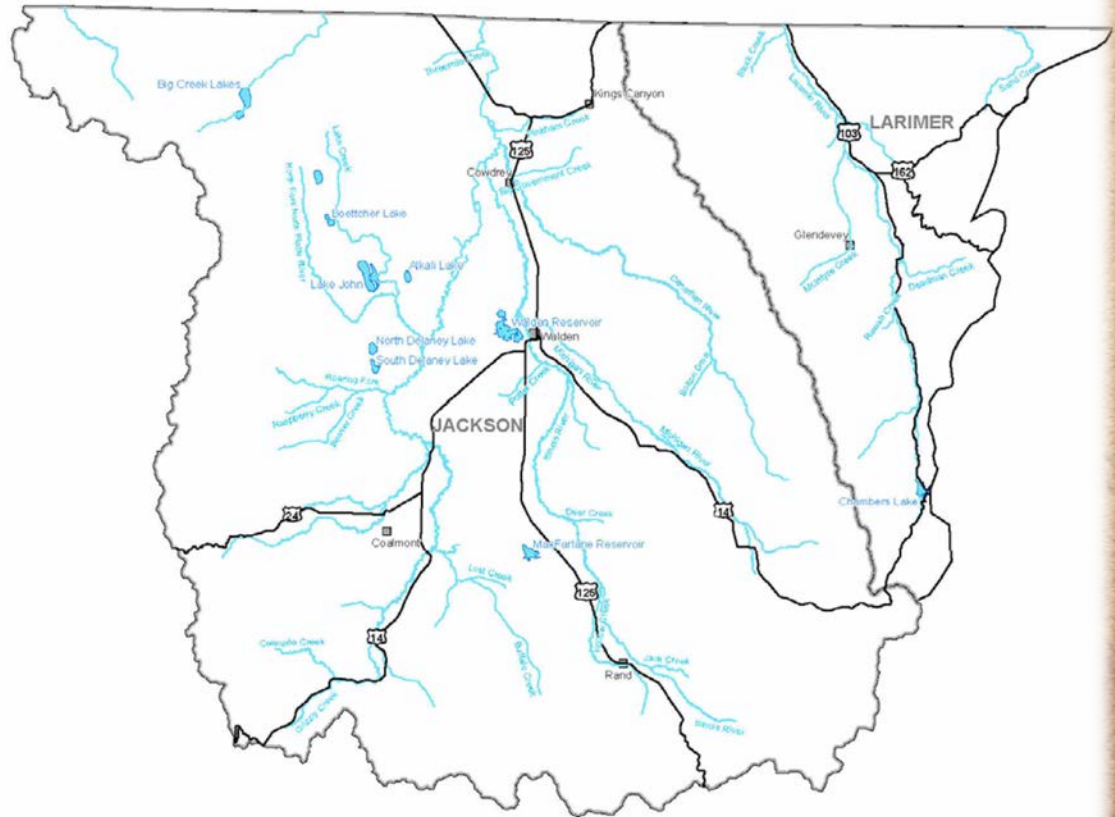
## What does that mean for North Park?

Home to 1,400 full-time residents

The annual average precipitation is 15" which must be stored and used carefully

Elevations range from 7,800 to 13,000 ft.

North Platte River Basin



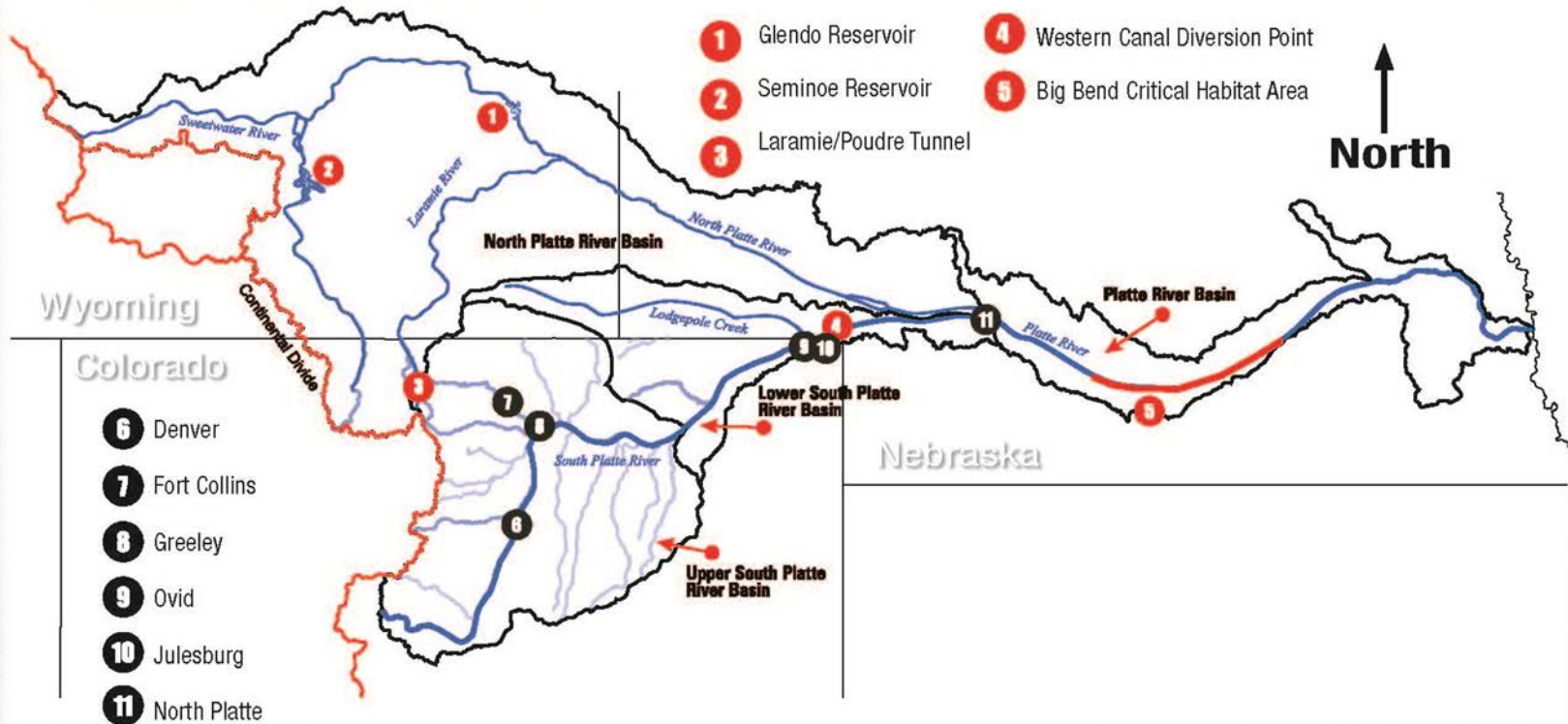


# NORTH PLATTE RIVER BASIN

## Platte River Basin

Diversions are legally limited by decrees with Wyoming & Nebraska

### The Platte River Basin





# NORTH PLATTE RIVER BASIN

Why is water important in North Park?

It has shaped our history...

since the beginnings of settlement, mining and agriculture





# NORTH PLATTE RIVER BASIN

## Why is water important in North Park?

It touches everything in our lives...

Agriculture – Domestic – Industry – Recreation – Environment





# NORTH PLATTE RIVER BASIN

## Why is water important in North Park?

It leaves a legacy for the future... protecting rural ways of life, healthy rivers, municipal supplies and food supplies





# NORTH PLATTE RIVER BASIN

## Our future is connected statewide

In North Park, water is used mostly for flood irrigation, watering meadows of high mountain hay that sustains cattle locally or trucked as feed around the state

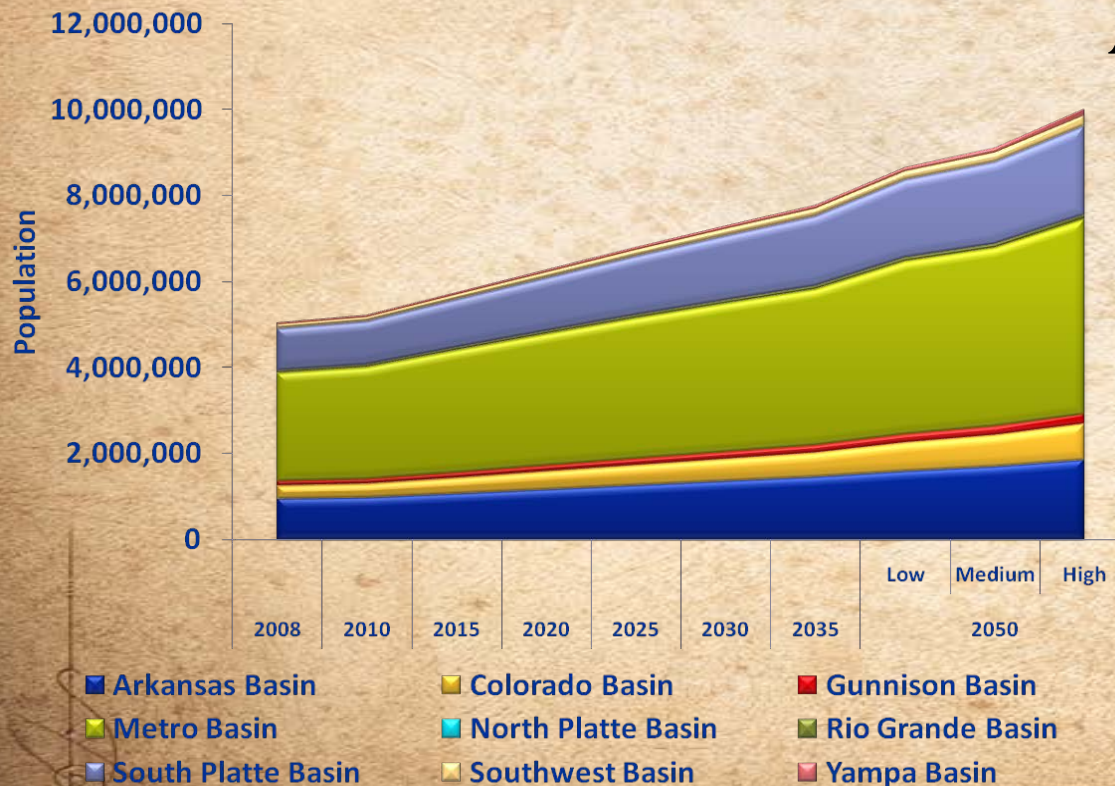
Irrigation also nourishes wetlands and riparian areas, providing essential “ecosystem services”





# NORTH PLATTE RIVER BASIN

Our future is connected statewide



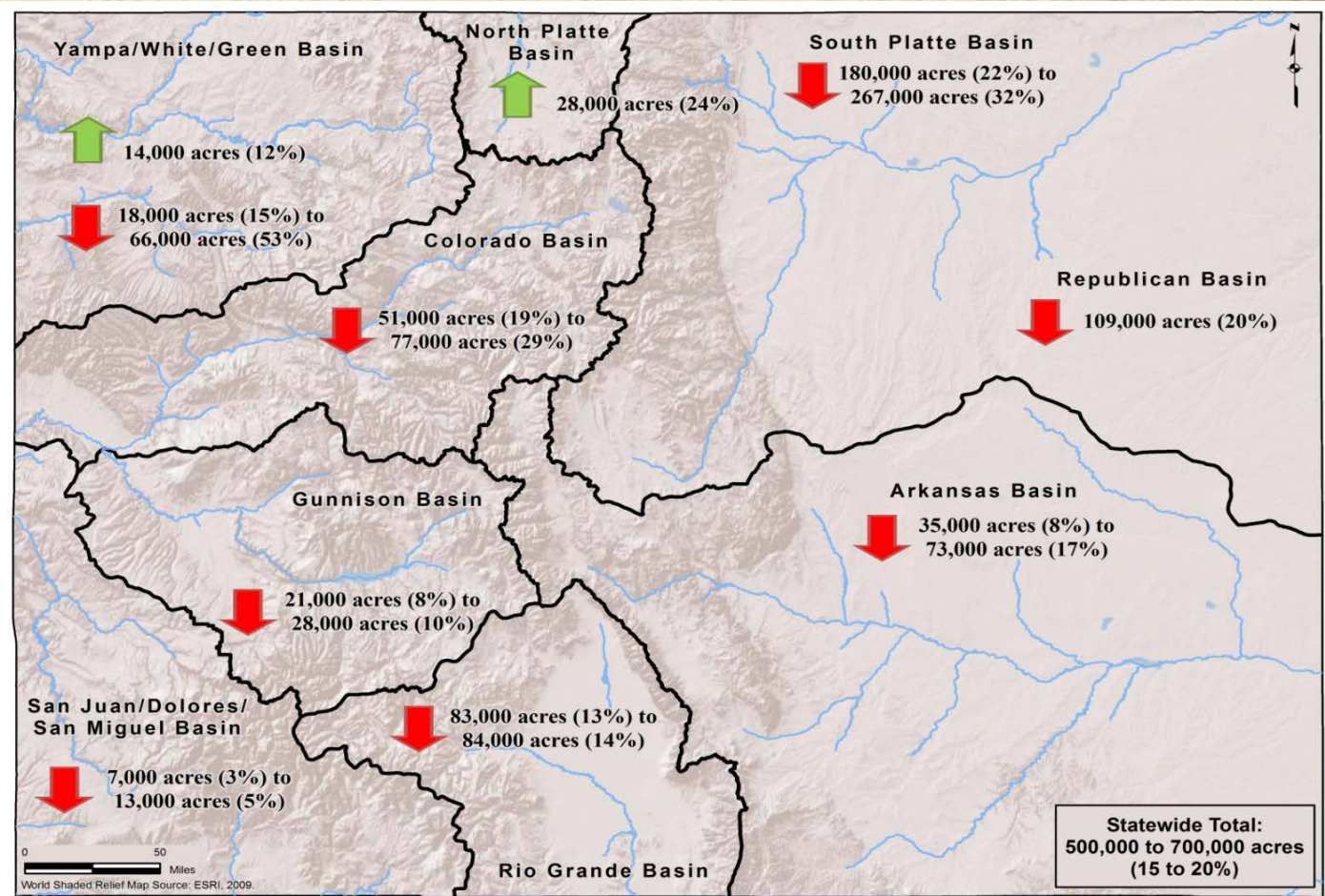
As our population grows, the demand for water also goes up. Some look to Colorado's farms and ranches as a future water supply.



# NORTH PLATTE RIVER BASIN

Our future is connected statewide

Potential  
changes in  
irrigated  
acres by  
2050

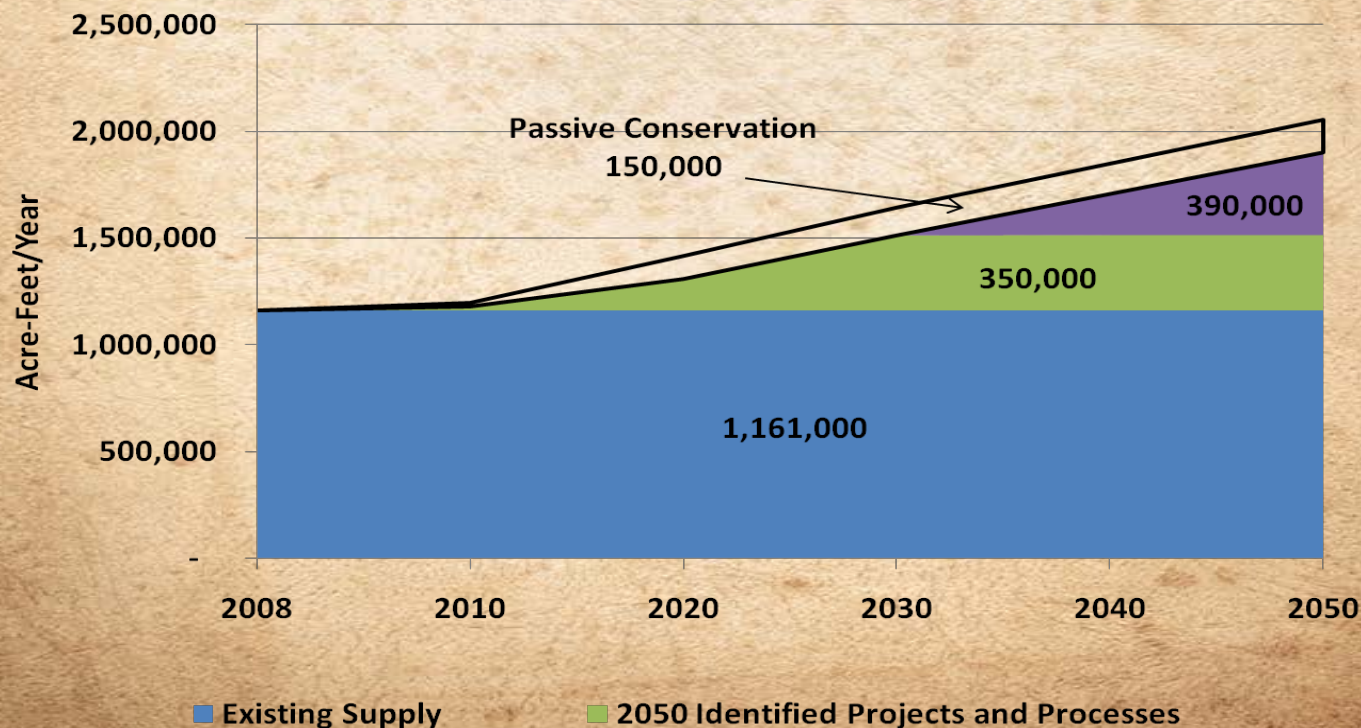




# NORTH PLATTE RIVER BASIN

Our future is connected statewide

Thus, there is a “GAP” in existing supply and future demand





# NORTH PLATTE RIVER BASIN

Our future is connected statewide



Balancing water use  
so communities,  
agriculture AND  
rivers have a  
sufficient water  
supply will  
determine our  
future.



# NORTH PLATTE RIVER BASIN

---

## Agriculture is connected statewide

Colorado is actively pursuing multi-purpose solutions to reduce the risks associated with transferring water from agriculture to cities

Drying up productive lands in the South Platte & Arkansas river basins generally deteriorates agricultural infrastructure – travel & transportation, available cattle & hay markets, purchasing feedlots, service & supply stores – and is further exacerbated by increasing fuel costs



# NORTH PLATTE RIVER BASIN

The Roundtable is exploring solutions



The North Platte Basin Roundtable is charged with facilitating discussions on water management

They encourage locally-driven, collaborative solutions



# NORTH PLATTE RIVER BASIN

The Roundtable is exploring solutions

There is one roundtable for each major river basin, plus one for the Metro area

Each group is assessing future “consumptive” and “nonconsumptive” water needs plus proposing projects and methods to meet those needs





# NORTH PLATTE RIVER BASIN

The Roundtable is exploring solutions

The basin's population is expected to grow from 1,400 in 2010 to **2,200** in 2050 and irrigated acreage is expected to increase by **24%** by 2050

How will we **meet those needs** while balancing agriculture, growing cities and environmental needs?



# NORTH PLATTE RIVER BASIN

---

## Consumptive Use Priorities

New Storage

Additional 17,000 Acres

Irrigated Land

Renewable Energy

Development

Energy & Mineral

Development

Fire Fighting

Aquaculture

Forest Products

Greenhouse Agriculture

Water Bottling

Plant/Brewery/Distillery

Snow-making

Water Theme Park

Golf Course

Feedlot and/or Slaughter  
House



# NORTH PLATTE RIVER BASIN

---

## Non-Consumptive Priorities

Important Stream, River, Lake & Reservoir Fishing

Waterfowl Hunting & Wetland Wildlife Viewing

Rare Plants & Significant Riparian/Wetland Plant Communities

Important Waterfowl/Shorebird & Crane Habitat

Amphibians

Whitewater & Flatwater Boating

River Otter

Bald Eagle & Osprey

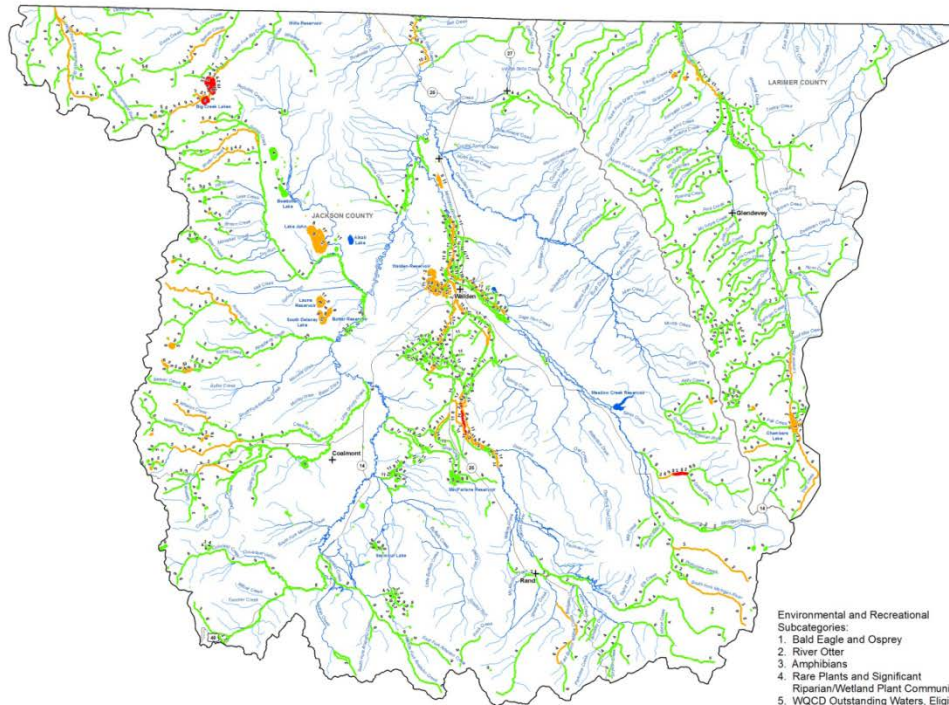
Instream Flows & Natural Lake Levels

Eligible & Suitable Wild & Scenic & Colorado Outstanding Waters

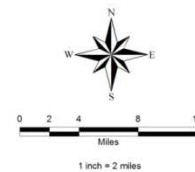
Lake Chub



# NORTH PLATTE RIVER BASIN



**Legend**  
**Environmental and Recreational Subcategory Count by Stream Segment**  
 1 - 2  
 3 - 4  
 5 - 6  
 Roads  
 Rivers and Streams  
 Lakes and Reservoirs  
 Cities and Towns  
 County Boundary



**Environmental and Recreational Subcategories:**  
 1. Bald Eagle and Osprey  
 2. River Otter  
 3. Amphibians  
 4. Rare Plants and Significant Riparian/Wetland Plant Communities  
 5. WOCD Outstanding Waters, Eligible/Suitable Wild and Scenic River Reaches  
 6. CWCB Instream Flow Waters  
 7. Lake Club  
 8. Important Waterfowl and Crane Habitat  
 9. Important Fishing  
 10. Whitewater and Floatwater Boating  
 11. Waterfowl Hunting and Riparian/Wetland Wildlife Viewing

**Figure 3-5**  
**North Platte Basin**  
**Nonconsumptive Needs Assessment**  
**Environmental and Recreational Subcategory Count per Stream Segment**



**CDM**

**DRAFT**

Refer to Appendix B of the NCNA Mapping Report for a complete list of data sources and Appendix D of the Mapping Report for other basin-specific mapping information.



# NORTH PLATTE RIVER BASIN

## The Roundtable is exploring solutions

The Water Supply Reserve Account (WSRA) grants funding to projects that help the basin meet their needs

1. Monitoring effects of weather – CO Climate Center
2. Irrigated meadow conservation program – Ducks Unlimited
3. New Pioneer Ditch diversion – Silver Spur Land & Cattle
4. Water supply improvement project – Town of Walden
5. Water control headgates & diversion – Jackson Cty. Water Cons. District
6. Solicitation of stakeholder input – CO Foundation for Water Education
7. Walden reservoir structure – Walden Reservoir Company
8. Identification & assessment of wetlands – CO Natural Heritage Program
9. Effects of Mountain Pine Beetle – US Forest Service



# NORTH PLATTE RIVER BASIN

---

The Roundtable is exploring solutions

WSRA Case Study: Monitoring effects of weather



# NORTH PLATTE RIVER BASIN

---

The Roundtable is exploring solutions

WSRA Case Study: Irrigated meadow conservation



# NORTH PLATTE RIVER BASIN

---

The Roundtable is exploring solutions

WSRA Case Study: New Pioneer Ditch diversion



# NORTH PLATTE RIVER BASIN

---

The Roundtable is exploring solutions

WSRA Case Study: Water supply improvement project



# NORTH PLATTE RIVER BASIN

---

The Roundtable is exploring solutions

WSRA Case Study: Water control headgates & diversion



# NORTH PLATTE RIVER BASIN

---

The Roundtable is exploring solutions

WSRA Case Study: Solicitation of stakeholder input



# NORTH PLATTE RIVER BASIN

The Roundtable is exploring solutions  
WSRA Case Study: Walden Reservoir Check Structure

Before



After





# NORTH PLATTE RIVER BASIN

The Roundtable is exploring solutions  
WSRA Case Study: Assessment of important wetlands

Northern leopard frog



Sageleaf willow



Golden headed blackbird





# NORTH PLATTE RIVER BASIN

The Roundtable is exploring solutions

WSRA Case Study: Effects of Pine Beetle on Water

Ongoing investigations





# NORTH PLATTE RIVER BASIN

---

## The Road Forward

[Optional slide: condense roundtable goals and priorities from existing list]



# NORTH PLATTE RIVER BASIN

---

## How can YOU get involved?

- ✓ Provide input on proposed solutions to meet future water needs
- ✓ Attend the monthly roundtable meetings in Walden
- ✓ Request speakers and educational resources
- ✓ Visit their website: [cwcb.state.co.us/water-management/basin-roundtables](http://cwcb.state.co.us/water-management/basin-roundtables)
- ✓ Contact roundtable leadership with questions