



REQUEST FOR BIDS (RFB)

2017 Chemical Application Services

PLATTE RIVER RECOVERY IMPLEMENTATION PROGRAM

Office of the Executive Director
4111 4th Avenue, Suite 6
Kearney, Nebraska 68845

January 30, 2017



Contents

I.	OVERVIEW	3
II.	WORK DESCRIPTION & SCOPE OF WORK.....	3
III.	CHEMICAL APPLICATION TIMING AND PERFORMANCE	4
IV.	PROGRAM LANDS	6
V.	BID ITEMS.....	8
VI.	FIELD AND OFFICE EQUIPMENT.....	8
VII.	CONTRACT TERMS.....	8
VIII.	SUBMISSION REQUIREMENTS	9
IX.	BID RESPONSE FORMS	11

Appendix A – Nebraska Noxious Weed List

Appendix B – Nebraska Invasive Weed Watch List

Appendix C –Chemical Management Form

Appendix D – Figures



PLATTE RIVER RECOVERY IMPLEMENTATION PROGRAM REQUEST FOR BIDS (RFB)

SUBJECT: 2017 Chemical Application Services
REQUEST DATE: January XX, 2017
PRE-BID MEETING: February XX, 2017
CLOSING DATE: February XX, 2017
POINT OF CONTACT: Tim R. Tunnell, Senior Land Manager
 Headwaters Corporation
tunnellt@headwaterscorp.com

I. OVERVIEW

The Platte River Recovery Implementation Program (“Program” or “PRRIP”) was initiated on January 1, 2007 between Nebraska, Wyoming, Colorado, and the Department of the Interior to address threatened and endangered species issues in the central and lower Platte River basin. The species considered in the Program, referred to as “target species”, are the whooping crane, piping plover, interior least tern, and pallid sturgeon.

A Governance Committee (GC) reviews, directs, and provides oversight for Program activities. The GC is comprised of one representative from each of the three states, three water user representatives, two representatives from environmental groups, and two members representing federal agencies. The GC has named Dr. Jerry Kenny to serve as the Program Executive Director (ED). Dr. Kenny established Headwaters Corporation as the staffing mechanism for the Program. Program staff are located in Nebraska and Colorado and are responsible for assisting in carrying out Program-related activities.

One of the major components of Program implementation is aquistion and management of 10,000 acres of habitat for the benefit of the target species. To date, approximately 12,500 acres have been acquired and are being managed by the Program’s Executive Director’s Office (EDO) Staff. The purpose of this request is to obtain qualified and licensed contractors to provide Chemical Application Services efficiently, effectively and in a timely manner to treat noxious and invasive weeds in Program owned and/or managed grasslands and maintain bare ground at off-channel sand and water nesting areas (OCSW) for target species. **As such, the GC is requesting bids from qualified contractors for 2017 chemical application services to be performed starting March 1 and ending on or around November 15, 2017.**

II. WORK DESCRIPTION & SCOPE OF WORK

Work Description

The Program is requesting bids from experienced contractors for chemical application services in 2017. All applicators must be certified with the Nebraska Department of Agriculture as a Commercial Applicator, catagories needed are: General, Ag. Plant and Aquatic. The performance period will begin on March 1 and will end on or around November 15, 2017. Bareground treatments on OCSW sites will require two applications; one application in late spring- typically April 1-April 15 prior to nest initiation of target species and a follow-up application in late summer after all chicks have fledged- typically August 15-September 1. Control of noxious weeds in Program owned and/or managed grassland sites will typically require 3-4 trips, as needed, through sites during the year. Generally, trips will be in the early spring, early summer, late summer, and fall prior to first frost.



Scope of Work The Contractor must have sufficient availability to fully utilize weather windows for chemical applications at Program lands which are distributed along a 60-mile reach of the Platte River in central Nebraska. The Contractor will be responsible for all labor, materials, equipment, tools, transportation and supplies required to complete the work. All applicators must be certified with the Nebraska Department of Agriculture as a Commercial Applicator, categories needed are: General, Ag. Plant and Aquatic.

Bareground treatments on OCSW sites will require one application in late spring- typically April 1-April 15 prior to nest initiation of target species and a follow-up application in late summer after all chicks have fledged- typically August 15-September 1. Areas will require broadcast spraying to ensure full spray coverage to the waters edge with both spring and fall applications. Equipment and spraying operations shall minimize rutting and ground surface disturbance. Close communication between Program staff and contractors must occur in order to avoid conflicts with spraying and target species. It is the responsibility of the Contractor to coordinate with Program staff on the status of use of target species prior to mobilization to the site for spraying.

Noxious weed control will typically require 3-4 trips, as needed, through grassland sites during the year. Generally, trips will be in the early spring, early summer, late summer, and fall prior to first frost. A list of state of Nebraska noxious weed and Watch list species can be found in Appendix A and B.

III. CHEMICAL APPLICATION TIMING AND PERFORMANCE

Contractor will be ready to begin work as soon as contract is signed. Contractor will proceed to complete all the work as quickly and efficiently as possible while maintaining the quality standards listed in the Scope of Work. The Program Land Manager may stop work and order the removal and/or replacement of any equipment if the equipment is not working or calibrated properly. Contractor then has 48 hours to replace the equipment with an acceptable substitute and remove the inadequate equipment. The Program Land Manager may prohibit chemical application during adverse weather conditions (heat, cold, dry, wet, etc.). If adverse weather is a problem, Contractor must furnish additional personnel and equipment to make up for lost time and ensure timely completion.

Contractor must guarantee a minimum of 100% coverage of the bareground treatment areas and at least 95% mortality of targeted vegetation within the areas. Acceptable coverage will be determined within five days of application using several random spot inspections. Contractors are required to use marking dye to help with this process. Signs of mortality will be documented at random spot inspection sites beginning three weeks following application. If coverage and/or mortality rates are not met, the Program may require Contractor to retreat the areas at Contractor's expense and at no additional cost to the Program. No chemical herbicide applications will exceed the label rates on the herbicide containers. All requirements, including state and/or local requirements, listed on the herbicide label are to be followed. Failure to comply with label instructions is a violation of federal and/or state laws. Contractor is liable for any penalty, fines, or damages resulting from misuse of herbicides. Unless otherwise specified, Contractor will supply and apply all chemical herbicides, adjuvants, and other materials to ensure an effective kill of the target vegetation and will be reimbursed for the chemical used.

Contractor is expected to minimize broadcast spraying and use spot-spraying as primary control method of noxious and invasive weeds. However, broadcast spraying is allowable when infestations are larger than 0.25 acres. Contractor is expected to prevent overspray, drift, and/or nontarget damage to surrounding vegetation, open water, structures, and/or facilities. No less than 100% of all target



vegetation must be treated, and no less than 95% of the treated vegetation must be killed for the control method to be considered acceptable by the Program.

The Program is implementing a “Come Clean, Leave Clean” standard. All equipment used on Program lands, including tractors, ATVs, UTVs, trucks, trailers, and/or Argos need to be free of any plant material. The Program Land Manager will delineate a designated cleaning area on each tract for contractors to clean their equipment.

The licensed supervisor is responsible to ensure the following:

- Chemical pesticides must be kept in original containers until mixing. All mixtures should have temporary labels that list the trade name and rates of chemicals and any adjuvants within the spray container.
- The licensed supervisor must readily have available during application copies of all chemical pesticides labels and Material Safety Data Sheets (MSDS) that are being applied.
- During mixing and application, all recommended Personal Protective Equipment (PPE) will be properly worn to minimize applicator exposure to chemicals. All measuring cups should be rinsed and the effluent poured into the tank/bottle mixture.
- Chemicals and any rinse material from chemical containers will be applied to specific areas; run-off of any chemical substance is not acceptable.
- Herbicides that are mixed, transferred, or temporarily stored while on Program lands will be done so at designated staging areas. Any and all containers that contain pesticide or pesticide residues will be removed from Program lands once the chemical application is complete.
- Herbicides will not be applied during adverse or non-optimal weather conditions for the application method. Any weather condition, including heat, wind, or precipitation, that minimizes the effectiveness of the herbicide or increases the exposure and/or potential for drift to non-target vegetation, personnel, or objects will not be tolerated.
- Emphasis must be placed on ensuring the application will minimize exposure to people, facilities and the surrounding environment. Avoid any non-target exposure.

A Nebraska Department of Agriculture licensed supervisor shall be designated by Contractor as the field supervisor and remain onsite during all chemical application projects. The supervisor must be able to correctly identify the targeted species. A representative from Program staff will meet with the licensed supervisor at the beginning of each project to discuss treatment area and prescriptions and any special restrictions. Contractor is required to provide Program staff with the following upon request by the Program Land Manager:

- List of chemical herbicide trade names and the rates used to produce all chemical mixtures applied. This list should also include any adjuvants or surfactants included in the mixture.
- A “PRRIP Chemical Management Form” (Appendix C) is required after completion of treatment on each individual infestation, local area, or workday depending on time spent at a particular area. The form should include a map depicting estimated spray coverage area for the invoice. GPS data is encouraged but not mandatory.



IV. PROGRAM LANDS

Program lands are generally organized into approximately 1,000 to 3,000 acre blocks referred to as habitat complexes. There are six habitat complexes distributed across the project area, containing the majority of land (**Appendix D; Figure 1**). Additionally, there are 2 non-complex wetland sites that have been associated with a complex. There are also two OCSW sites located within habitat complexes and three stand-alone OCSW sites. For the purposes of this contracting process, the OCSW sites have been split in to east and west groupings.

The following sections of the scope of work provide specific information about each habitat complex:

Plum Creek Complex

Contractors should be aware of the following points:

1. Plum Creek Complex is located less than 1 mile to the south of Interstate 80 between the towns of Lexington and Overton, NE.
2. Plum Creek complex is approximately 722 acres, contains 2 tracts of land and is 2 miles long with the majority of the land located on the south side of the Platte River. There is 1 additional wetland tract, approximately 100 acres, located in close proximity to the southwest of the complex (**Figure 2**).
3. There is a 21 acre OCSW site located in the middle of Tract 2009003.

Cottonwood Ranch Complex

Contractors should be aware of the following points:

1. Cottonwood Ranch Complex is located less than 1 mile to the south of Interstate 80 between the towns of Overton and Elm Creek, NE.
2. Cottonwood Ranch complex is approximately 3,528 acres, contains 3 tracts of land and is 4 miles long with the majority of the land located on the south side of the main channel of the Platte River. There is 1 additional wetland tract, approximately 153 acres, located in close proximity to the northwest of the complex (**Figure 3**).
3. There is a 16 acre OCSW site located in the middle of Tract 2008002.

Elm Creek Complex

Contractors should be aware of the following points:

1. Elm Creek Complex is located less than 1/4 mile to the south of Interstate 80 between the towns of Elm Creek and Odessa, NE.
2. Elm Creek complex is approximately 1,302 acres, contains 5 tracts of land and is 2 miles long with 3 tracts being located on the north side of the Platte river and the others are located on the south side of the Platte River (**Figure 4**).



Pawnee Complex

Contractors should be aware of the following points:

1. The Pawnee Complex is located less than 1/4 mile to the south of Interstate 80 between the towns of Odessa and Kearney, NE.
2. The Pawnee complex is approximately 693 acres, contains 3 tracts of land and is 3 miles long. Two tracts are located on the south side of the Platte River and one is on the north side (**Figure 5**).
3. There is a 17 acre OCSW site located at Tract 2010002.

Fort Kearny Complex

Contractors should be aware of the following points:

1. The Fort Kearny Complex is located less than 1/4 mile to the south of Interstate 80 and is located between 2 channels of the Platte River near the town of Kearney, NE and Highway 10.
2. The Fort Kearny complex is approximately 2,437 acres, contains 6 tracts of land and is 5 miles long (**Figure 6**).
3. There is a 22 acre OCSW site located at Tract 2009008.

Shoemaker Island Complex

Contractors should be aware of the following points:

1. Shoemaker Island Complex is located less than 1/2 mile to the south of Interstate 80 between 2 channels of the Platte River near the towns of Wood River and Alda, NE.
2. Shoemaker Island complex is approximately 1,834 acres, contains 3 tract of land and is 3 miles long (**Figure 7**).
3. There is a 16 acre OCSW site located in the middle of East Tract 2011001 and a 6 acre OCSW site located on Tract 2011002.

OCSW Bare Ground West

1. OCSW Bare Ground West tracts are located to the south of Interstate 80 between the towns of Lexington and Kearney, NE.
2. OCSW Bare Ground West contains 3 sites and is approximately 54 acres (**Figure 8**).

OCSW Bare Ground East

1. OCSW Bare Ground East tracts are located to the south of Interstate 80 between Highway 10- I-80 interchange and the town of Alda, NE.
2. OCSW Bare Ground West contains 3 tracts of land is approximately 40 acres (**Figure-9**).

NOTE: DETAILED MAPS WILL BE AVAILBLE UPON AWARDING OF CONTRACT.

**V. BID ITEMS**

Contractors will submit mobilization and demobilization costs by habitat complex, per-hour rate of labor, per-hour rate of equipment, and chemical cost mark up. Contractor compensation will be based on the mobilization and demobilization cost, number of hours of labor and equipment use, and the quantity of herbicides used to complete the work.

VI. FIELD AND OFFICE EQUIPMENT

Potential Contractors will own or acquire all field and office equipment and software required to provide chemical application services.

VII. CONTRACT TERMS

The selected Contractor (s) will be retained by: Nebraska Community Foundation
PO Box 83107
Lincoln, NE 68501

The Contractor will be subject to (but not limited to) the following contract terms:

Certification/Training Requirements: Meet or exceed Nebraska Department of Agriculture herbicide spraying certification and training requirements.

Insurance Requirements: If awarded, Contractor shall represent and guarantee that all employees, agents, servants or representatives of Contractor, and all employees, agents, servants, or representatives of subconsultants are covered by workers' compensation insurance as required by Nebraska Statute. Prior to entering into contract with PRRIP, contractor shall furnish PRRIP with certificates of insurance, naming PRRIP as named or additional insured without waiving any defense of sovereign immunity or increasing the limits of PRRIP's liability in excess of Nebraska State Statute for item (3) below, providing evidence that contractor has in full force and effect the following minimum insurance with insurers authorized to do business in the State of Nebraska. The certificate of insurance shall also provide that PRRIP shall be notified in writing by the carrier at least 30 days prior to any cancellation of said insurance.

1. Workers' compensation insurance as required above;

2. Motor vehicular liability insurance with limits of not less than \$1,000,000 combined single limit which insurance shall be applicable to any and all vehicles utilized by contractor to provide the services requested by PRRIP;

3. General liability insurance for all services rendered by contractor for the requested services with a minimum of \$1,000,000 personal and advertising injury and \$1,000,000 general aggregate.



VIII. SUBMISSION REQUIREMENTS

All interested parties having experience providing the services listed in this RFB are requested to submit a bid.

Instructions for Submitting Bids

One original bid document supporting documentation must be submitted by mail to Tim Tunnell *no later than 12:00 PM Central Time Friday, February XX, 2017*. A bid is late if received after that time and will not be considered. Proposals should be submitted to:

Tim R. Tunnell, Senior Land Manager
Platte River Recovery Implementation Program
4111 4th Avenue, Suite 6
Kearney, NE 68845

Questions regarding the information contained in this RFB should be submitted by **email only** (no phone calls) to Tim Tunnell at tunnellt@headwaterscorp.com. A list of compiled Contractor questions and responses will be maintained on the Program web site (www.PlatteRiverProgram.org) in the same location as this RFB solicitation.

RFB Schedule

The ED Office expects to complete the selection process and award the work by approximately February XX, 2017. The following table represents the RFB schedule:

Description	Date	Time (Central)
Issue RFB	January XX, 2017	NA
Pre-proposal meeting	February XX, 2017	1:00 PM
Last day for respondents to submit questions regarding the RFB	February XX, 2017	12:00 PM
Bids due from respondents	February XX, 2017	12:00 PM
Evaluation of bids	February XX, 2017 - February XX, 2017	
Award of Work	On February XX, 2017	
Start of Work	Approximately March 1	
Completion of Work	Approximately November 15	

Pre-Bid Meeting

A **mandatory** pre-bid meeting of interested parties will be held on February XX, 2017 from 1:00 to 2:00 p.m. Central Time via conference call for the purpose of familiarizing the respondents with the work scope and requirements included herein before submitting a response to this RFB. Please email Tim Tunnell (tunnellt@headwaterscorp.com) for the conference call dial-in information along with a list of people from your party expected to join in the pre-proposal conference call by 12:00 p.m. central time on February XX, 2017.

It is the Contractor's responsibility, while at the pre-proposal meeting/conference call, to ask questions necessary to understand the RFB so the respondent can submit a proposal that is complete and in accordance with RFB requirements. There shall be no minutes distributed by the ED Office regarding the meeting.



Bid Content

Bids must include the following contents and documentation:

1) General Information

2) Completed Bid Form including identification of the habitat complexes and/or bare ground areas (east/west) that the contractor is bidding on.

3) Equipment list that includes all equipment that would be mobilized for this project.

4) References Names/address/telephone of three clients who can attest to your experience as it relates to the services you are proposing.

5) Description of insurance shall be provided with the proposal. Proof of insurance will be required before a contract is issued. Minimum insurance requirements are described in Section VII.

6) Affirmative statement that neither the firm nor the principals of the firm are on the federal suspended and disbarred list. If the firm has a DUNS number, please provide to assist in verification.

Criteria for Evaluating Bids

Bids will be evaluated and a Contractor selected based on the following principal considerations:

1. Price proposal.
2. Equipment availability.
3. References.
4. Insurance and affirmative statement.

The winning bid will be selected to best meet overall project objectives. Should the successful Contractor(s) be unable at any time to accomplish the work they have been contracted for or meet any of the requirements or standards listed in this Bid, the next ranked Contractor may be contacted to provide the required work.

Award Notice

After completing the evaluation of all bids, the Program will select a Contractor. If the Program is unable to negotiate a mutually satisfactory contract with a Contractor, it may, at its sole discretion, cancel and reissue a new RFB.

Program Perspective

The Program GC has the sole discretion and reserves the right to reject any and all bids received in response to this RFB and to cancel this solicitation if it is deemed in the best interest of the Program to do so. Issuance of this RFB in no way constitutes a commitment by the Program to award a contract, or to pay Contractor's costs incurred either in the preparation of a response to his RFB or during negotiations, if any, of a contract for services. The Program also reserves the right to make amendments to this RFB by giving written notice to Contractors, and to request clarification, supplements, and additions to the information provided by a Contractor.

By submitting a bid in response to this solicitation, Contractors understand and agree that any selection of a Contractor or any decision to reject any or all responses or to establish no contracts shall be at the sole discretion of the Program. To the extent authorized by law, the Contractor shall indemnify, save, and hold harmless the Nebraska Community Foundation, the states of Colorado, Wyoming, and Nebraska, the



Department of the Interior, members of the GC, and the ED Office, their employees, employers, and agents, against any and all claims, damages, liability, and court awards including costs, expenses, and attorney fees incurred as a result of any act or omission by the Contractor or its employees, agents, sub-Contractors, or assignees pursuant to the terms of this project. Additionally, by submitting a proposal, Contractor agrees that they waive any claim for the recovery of any costs or expenses incurred in preparing and submitting a proposal.

IX. BID RESPONSE FORMS

The following forms are to be submitted as part of Contractor proposals.



382 **PART I: GENERAL INFORMATION**

Company Name:	Telephone Number:	Fax Number:
Mailing Address:	City, State, Zip Code:	
Physical Address:	City, State, Zip Code:	
Name of Contact:	Telephone Number:	E-mail Address & Company web address
Business Type: <input type="checkbox"/> Corporation <input type="checkbox"/> Partnership <input type="checkbox"/> Individual <input type="checkbox"/> Consolidated Company		
Status: <input type="checkbox"/> Prime Contractor <input type="checkbox"/> Subcontractor	Federal Tax ID:	
Number of Employees (at peak):	Age of Firm:	Insurance Limit:

383



PART II: PLATTE RIVER RECOVERY IMPLEMENTATION PROGRAM

**2017 CHEMICAL APPLICATION SERVICES
LABOR & EQUIPMENT COST RATE:**

Please identify which Habitat Complex you are interested in providing Chemical Application Services:

	Bare Ground Sites West:	Bare Ground Sites East:
Noxious Weed Sites:		
Plum Creek Complex	Tract 2009003	Tract 2009008
Cottonwood Ranch Complex	Tract 2008002	Tract 2011001
Elm Creek Complex	Tract 2010002	Tract 2011002
Pawnee Complex		
Fort Kearny Complex		
Shoemaker Island Complex		

The Contractor is required to submit unit prices for all work Items below that apply to the proposal:

Item No.	Description	Unit	Unit Price
001	Mobilization and Demobilization ¹		
	Plum Creek Complex	LS	\$ _____
	Cottonwood Ranch Complex	LS	\$ _____
	Elm Creek Complex	LS	\$ _____
	Pawnee Complex	LS	\$ _____
	Ft. Kearny Complex	LS	\$ _____
	Shoemaker Island Complex	LS	\$ _____
	Bare Ground Sites West	LS	\$ _____
	Bare Ground Sites East	LS	\$ _____
002	Chemical Application-Labor ²	HR	\$ _____
003	Chemical Application-Equipment ³		
004	Chemical Application-Spray Truck	HR	\$ _____
005	Chemical Application-ATV	HR	\$ _____
006	Chemical Application-UTV/Argo	HR	\$ _____
007	Chemical Application-Airboat	HR	\$ _____
402	Chemical Cost Markup ⁴ :	Yes/ No	Percent: _____

¹ Lump sum rate for mobilization and demobilization per site and per year of service.

² Per-hour rate for chemical application or labor required to complete the work.

³ Per-hour rates for equipment required to complete the work.

⁴ Chemical will be reimbursed based on use and mark-up.



PART IV: PLATTE RIVER RECOVERY IMPLEMENTATION PROGRAM

REFERENCES:

(Names/address/telephone of three clients who can attest to your experience
as it relates to the services you are proposing.)

FIRM NAME: _____

ADDRESS: _____

CONTACT PERSON: _____

TELEPHONE: _____

EMAIL: _____

FAX: _____

FIRM NAME: _____

ADDRESS: _____

CONTACT PERSON: _____

TELEPHONE: _____

EMAIL: _____

FAX: _____

FIRM NAME: _____

ADDRESS: _____

CONTACT PERSON: _____

TELEPHONE: _____

EMAIL: _____

FAX: _____



Appendix A

NEBRASKA NOXIOUS WEEDS

- Saltcedar (*Tamirix* spp.)
- Purple Loosetrife (*Lythrum salicaria* L.)
- Phragmites (*Phragmites australis*)
- Leafy Spurge (*Euphorbia esula* L.)
- Canada Thistle (*Cirsium arvense* L.)
- Musk Thistle (*Carduus nutans* L.)
- Plumless Thistle (*Carduus acanthoides*)
- Spotted (*Centaurea stoebe*) and Diffuse (*Centaurea diffusa*) Knapweed
- Japanese (*Fallopia japonica*), Giant (*Fallopia sachalinensis*) and Bohemian (*Fallopia bohemica*) Knotweed
- Sericea Lespedeza (*Lespedeza cuneata*)



Appendix B

NEBRASKA INVASIVE WEED WATCH LIST

Invasive Plants Watch List: Mixedgrass Prairie Ecoregion (Adams, Boyd, Buffalo, Custer, Dawson, Franklin, Frontier, Furnas, Gosper, Greeley, Hall, Harlan, Hayes, Hitchcock, Howard, Kearney, Keya Paha, Nuckolls, Phelps, Red Willow, Sherman, Valley, Webster)

Future Invasive Species:

Giant reed	Arundo donax L.
Oriental bittersweet	Celastrus orbiculatus
Water hyacinth	Eichhornia crassipes
Hydrilla	Hydrilla verticillata
Brittle naiad	Najas minor
Giant salvinia	Salvinia molesta

Priority Species:

Amur maple	Acer ginnala
Russian knapweed	Acroptilon repens
Garlic mustard	Allaria petiolata
Australian beardgrass	
(Caucasian bluestem)	Bothriochloa bladhii (Andropogon bladhii)
Cutleaf teasel	Dipsacus laciniatus
European alder-	
buckthorn	Frangula alnus
Japanese honeysuckle	Lonicera japonica, morrowii, morrowii x tatarica (also Morrow, Showy Fly)
Myriophyllum spicatum	Eurasian water-milfoil
Sulphur cinquefoil	Potentilla recta L.
Yellow-flag Iris	Iris pseudacorus



Appendix C
PRRIP Chemical Management Form
(Must Accompany Invoice for Payment)

Date _____

Complex _____ Tract _____ Start Time _____ End Time _____

Contract Company Name _____ Licensed Supervisor Name _____

Weather Conditions:

Wind Speed: _____ mph Wind Direction: _____ Temperature: _____ °F

(Circle)

Sunny Partly Cloudy Cloudy Rain Cloud Cover: _____ %

(Circle)

Bare Ground Thistle Leafy Spurge Phragmites Purple Loosetrife Tree/Brush _____

Other _____ Other _____ Other _____ Other _____ Other _____

App Date	App Hrs	Equip Used	Target Spp.	Herbicide	Rate	Adjuvant/Oil	Mix	Gallons Herbicide	Adj	

Comments: _____

Follow-up

Comments _____

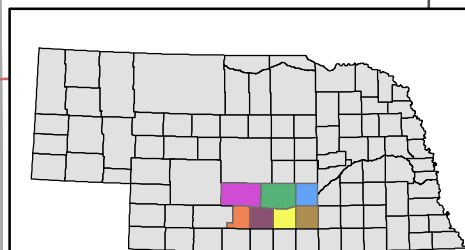
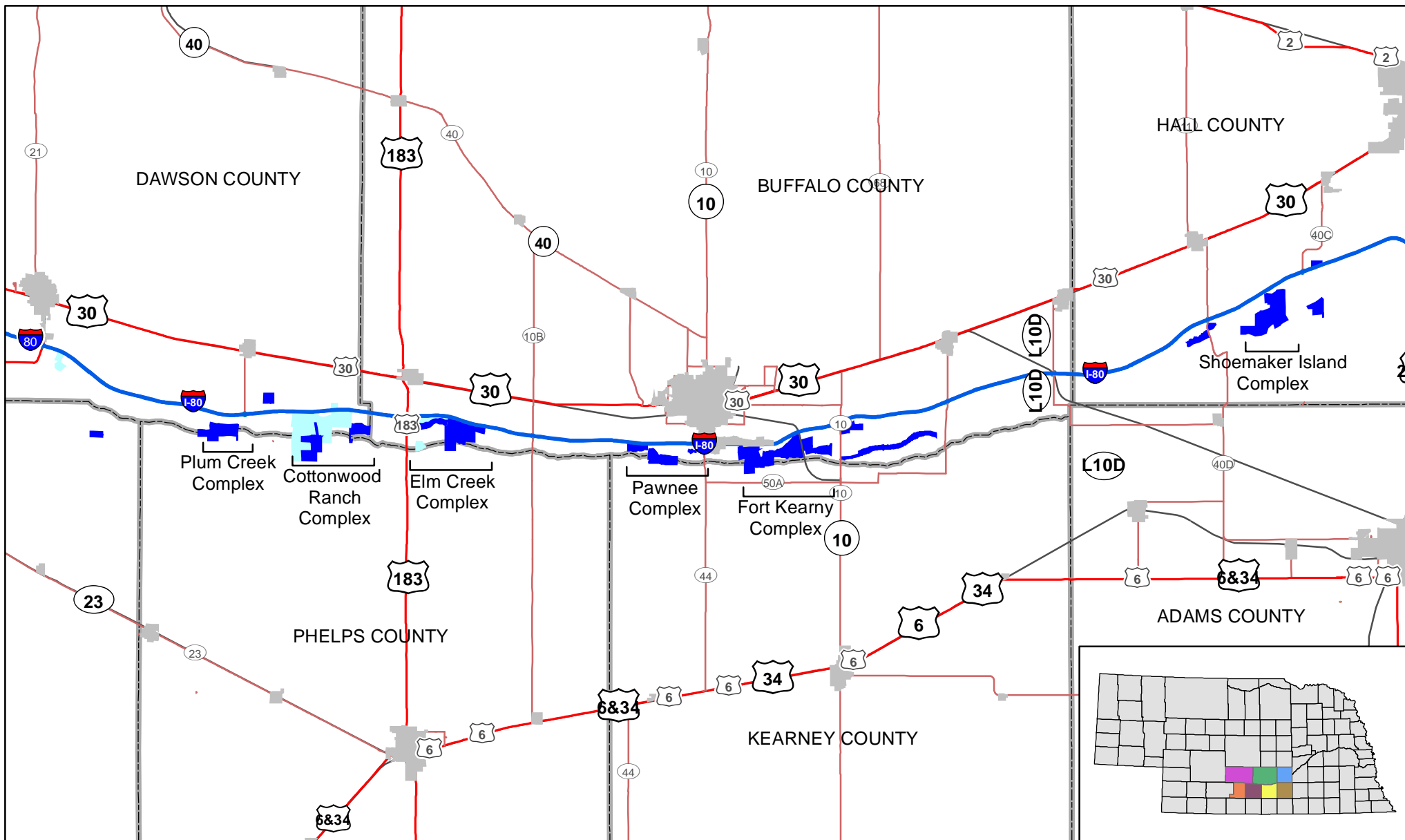
Identify Coverage Area on Map



521
522

Appendix D

Figures



Legend

nebraska_counties_14

nebraska_cities_14

Conservation_Lands

OWNERSHIP

NPPD

PRRIP



10 Miles

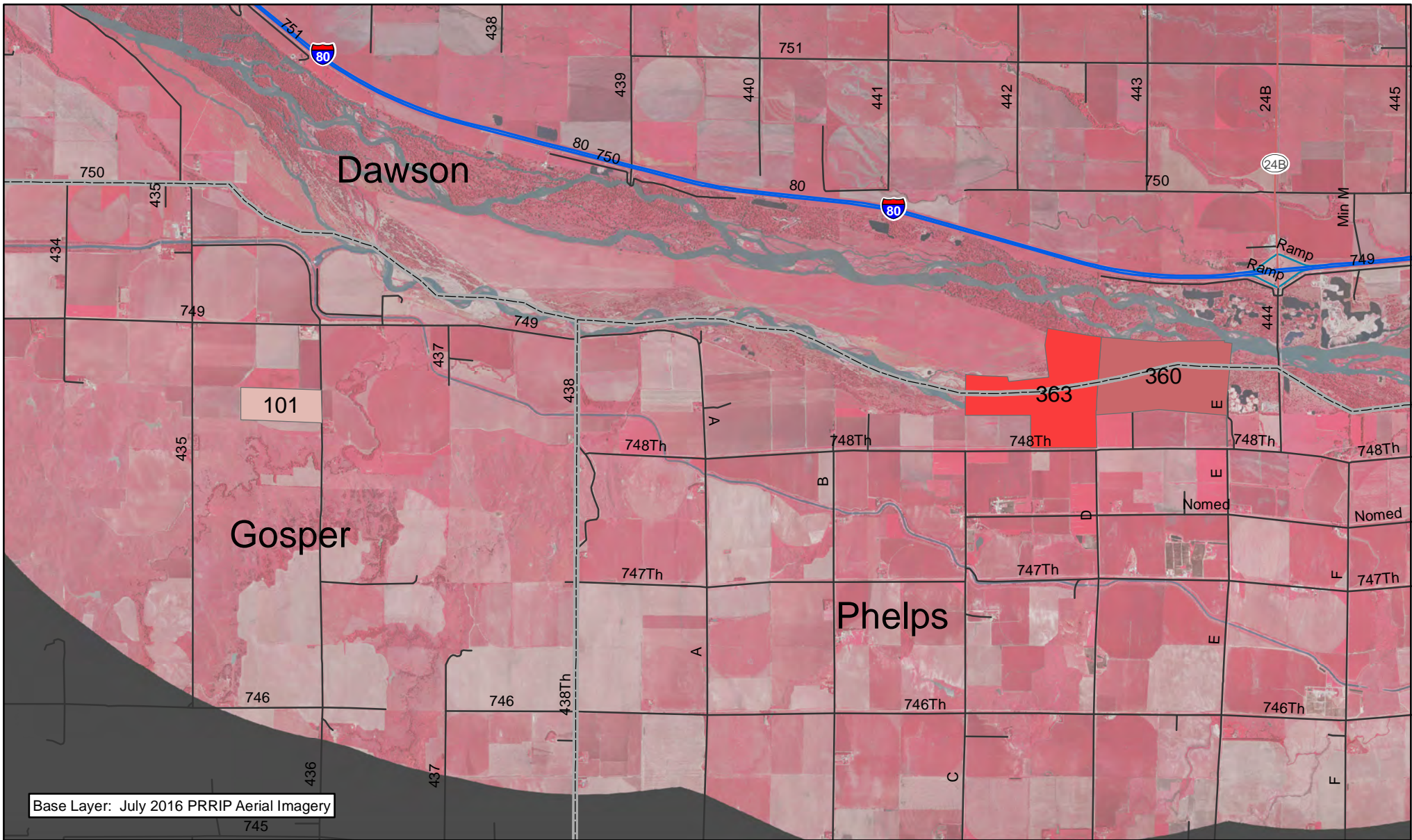
10

HABITAT COMPLEXES CHEMICAL APPLICATION SERVICES

Date: 01/19/2017

By: TRT

Figure 1



PLATTE RIVER
RECOVERY IMPLEMENTATION PROGRAM

Legend

PRRIPTractNum

- 2009003
- 2009007
- 2012004

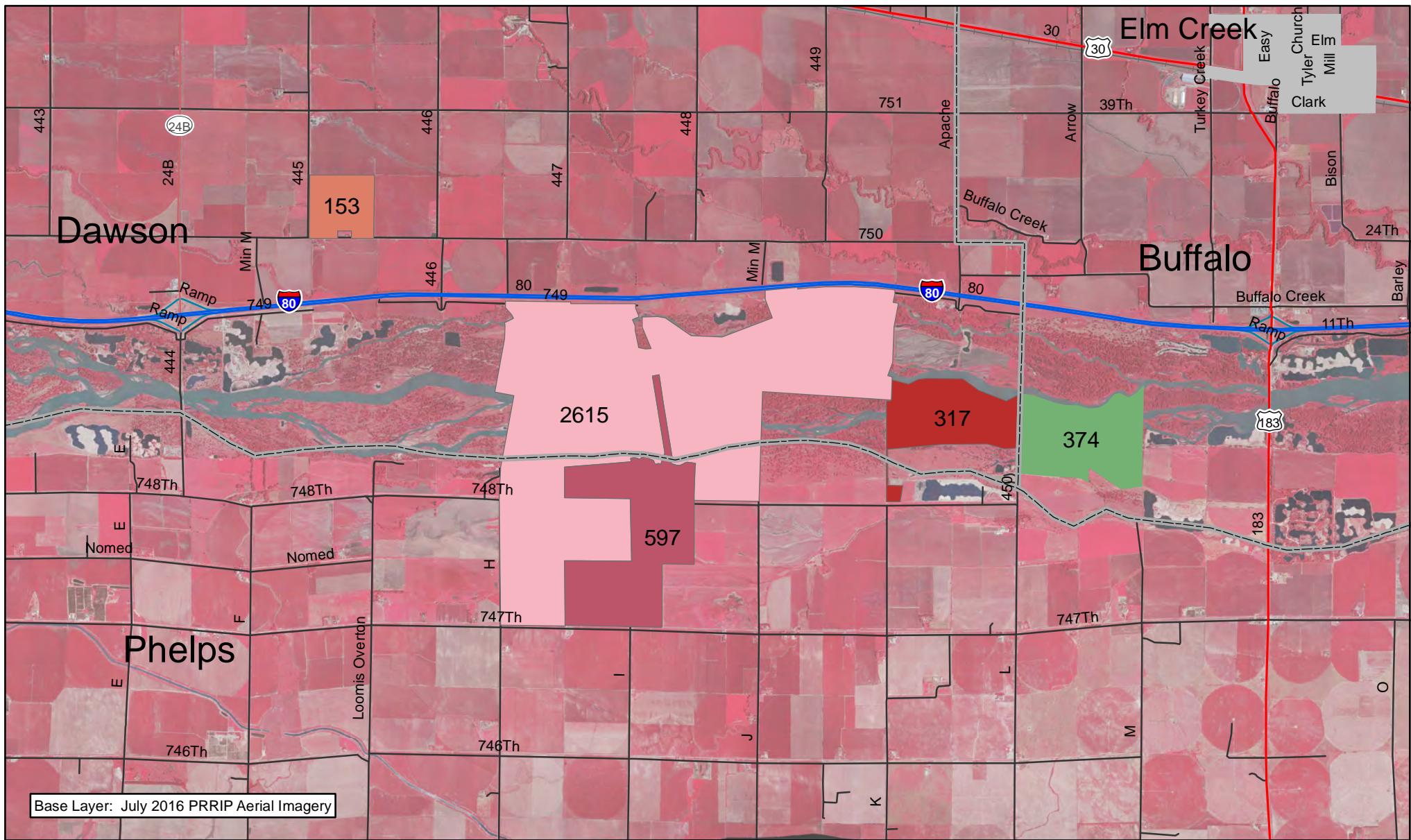


Miles
2.5

PLUM CREEK COMPLEX

Date: 01/19/2017
By: TRT

Figure 2



Base Layer: July 2016 PRRIP Aerial Imagery



Legend

PRRIPTractNum

- 2008002
- 2009006
- 2010001
- 2013001
- W002

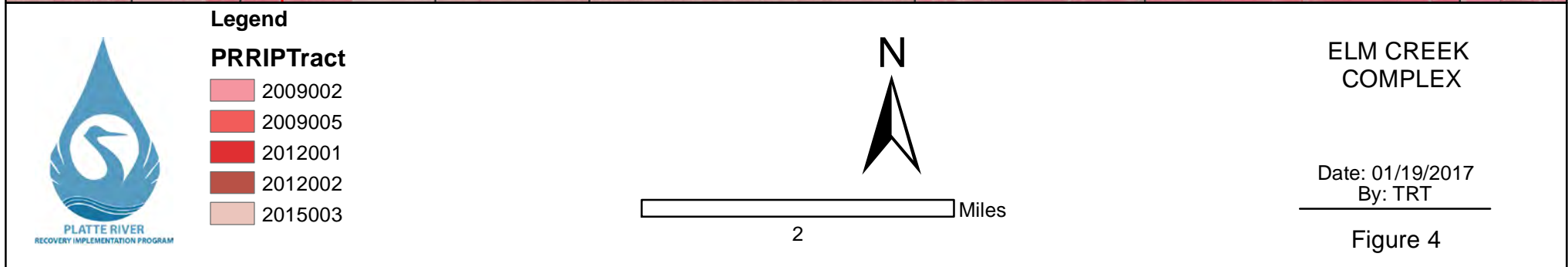


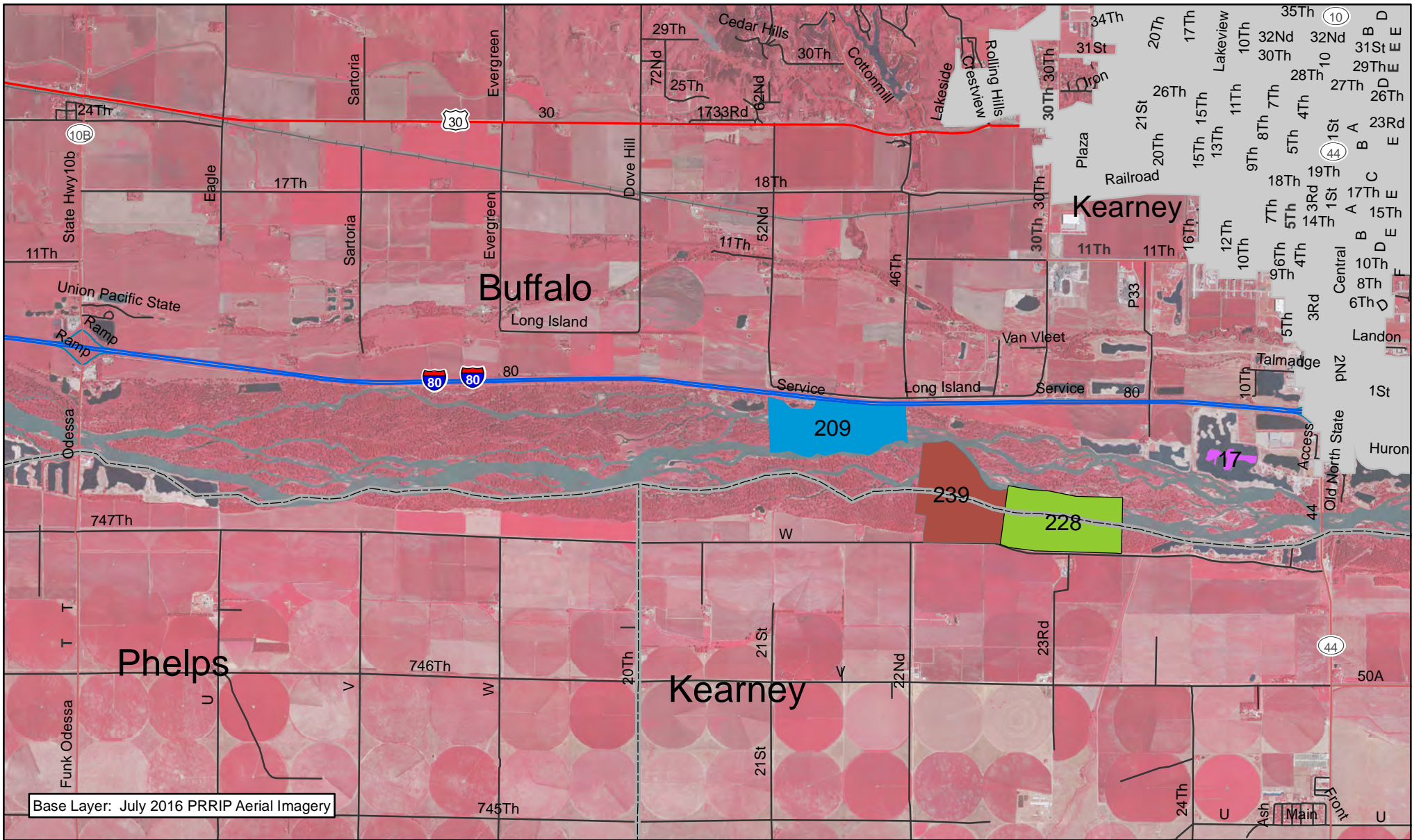
2.5 Miles

COTTONWOOD RANCH COMPLEX

Date: 01/19/2017
By: TRT

Figure 3





Base Layer: July 2016 PRRIP Aerial Imagery



Legend

Conservation_Lands

PRRIPTractNum

- DOR
- 2015002
- 2014002
- 2010002

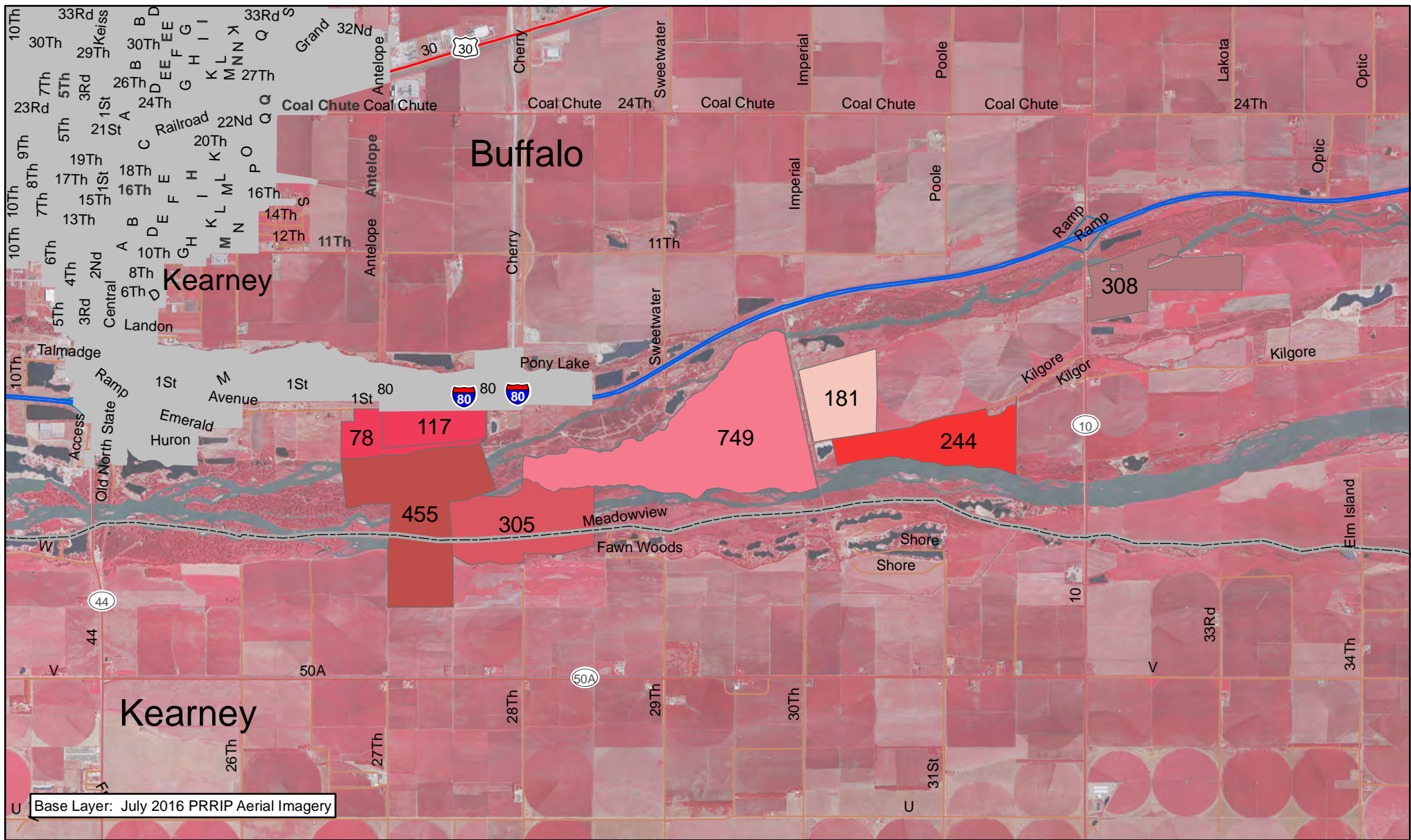


2.5 Miles

PAWNEE COMPLEX

Date: 01/19/2017
By: TRT

Figure 5



Base Layer: July 2016 PRRIP Aerial Imagery



Legend

Conservation_lands

PRRIPTract

- 2008001
- 2009001
- 2009004
- 2009008
- 2010003
- 2012003
- 2015001

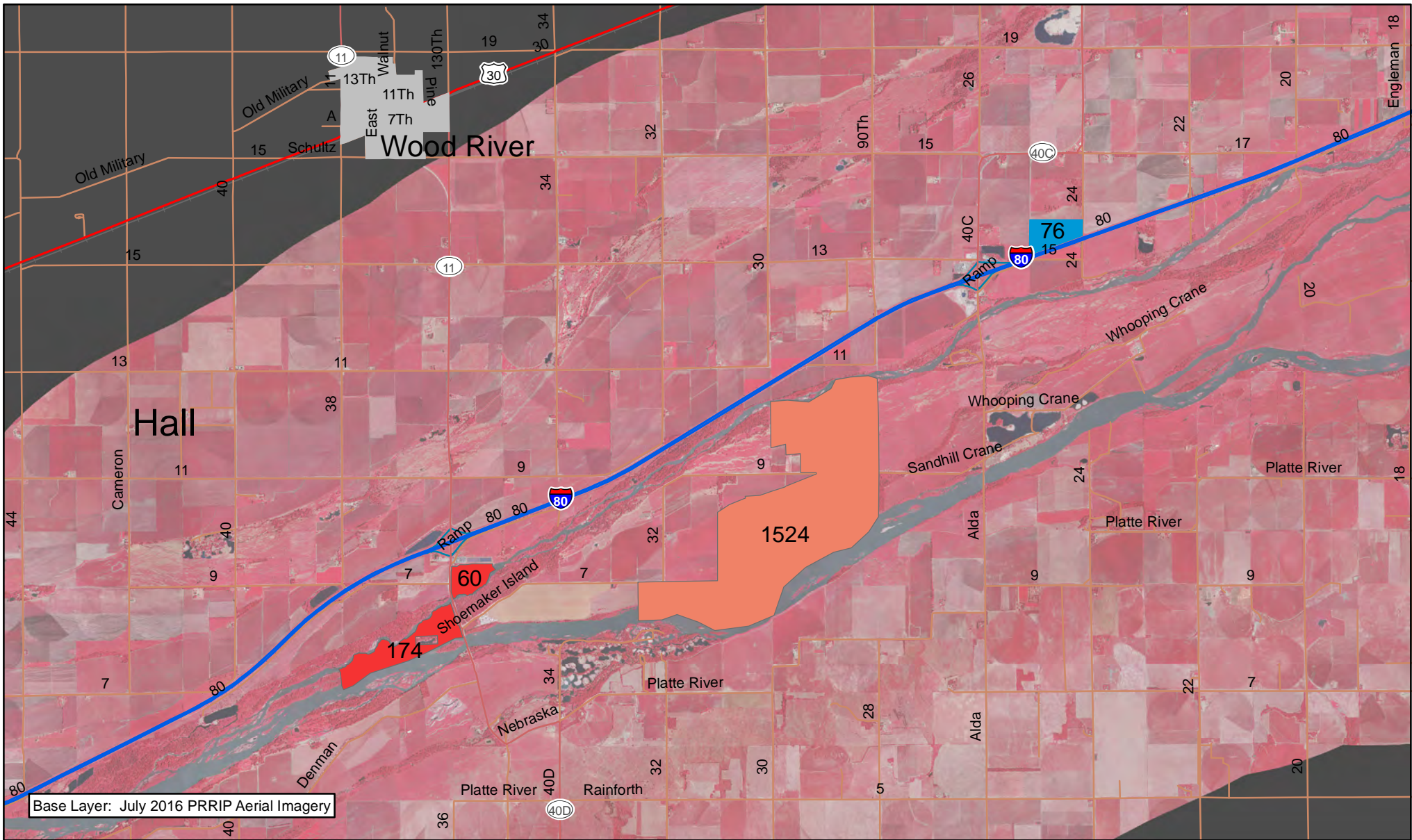


2 Miles

FORT KEARNY COMPLEX

Date: 01/19/2017
By: TRT

Figure 6



Base Layer: July 2016 PRRIP Aerial Imagery



Legend

Conservation_lands

PRRIPTract

- 2010004
- 2011001
- 2011002

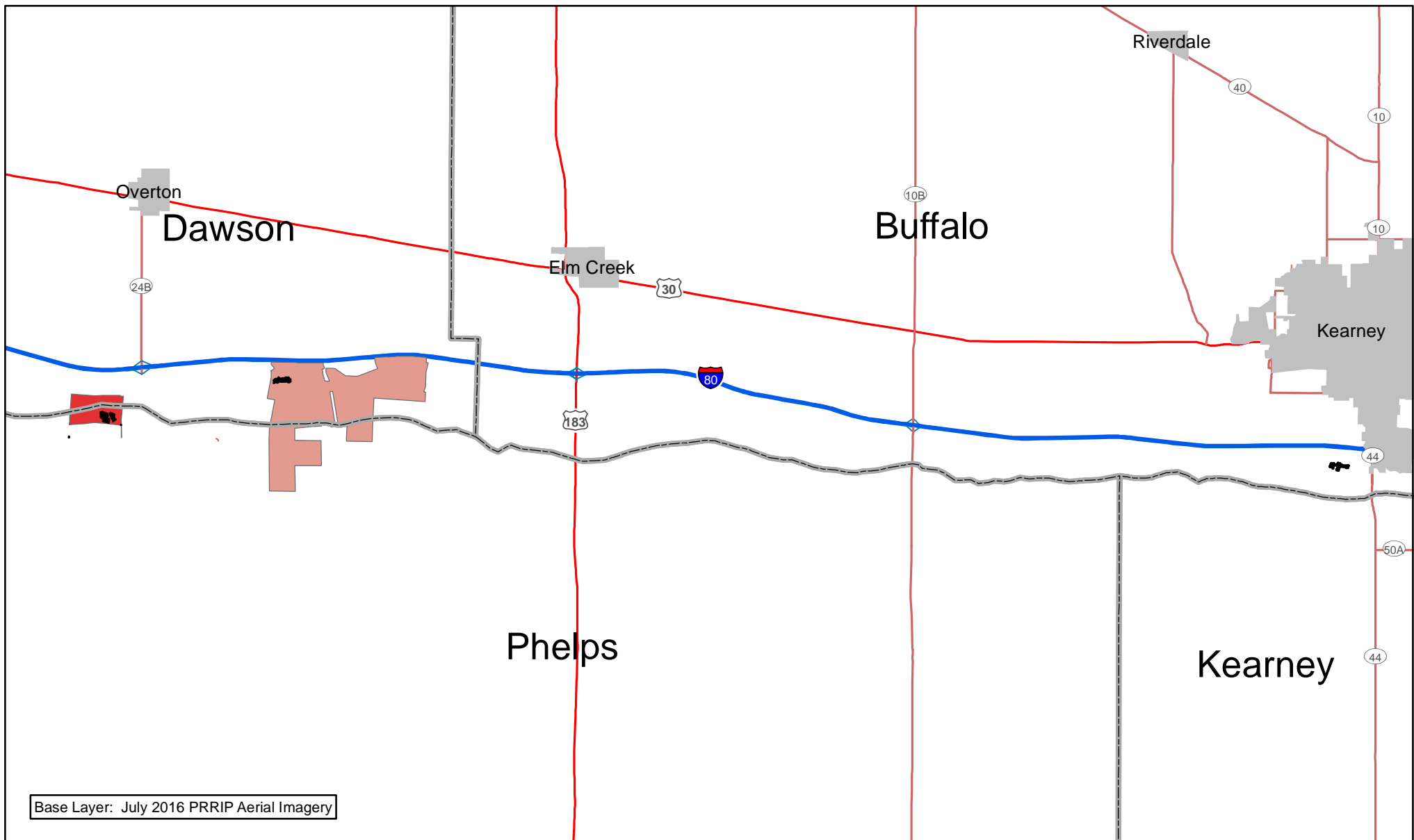


2.5 Miles

SHOEMAKER ISLAND COMPLEX

Date: 01/19/2017
By: TRT

Figure 7



PLATTE RIVER
RECOVERY IMPLEMENTATION PROGRAM

Legend

PRRIPTractNum

- 2008002
- 2009003
- 2010002



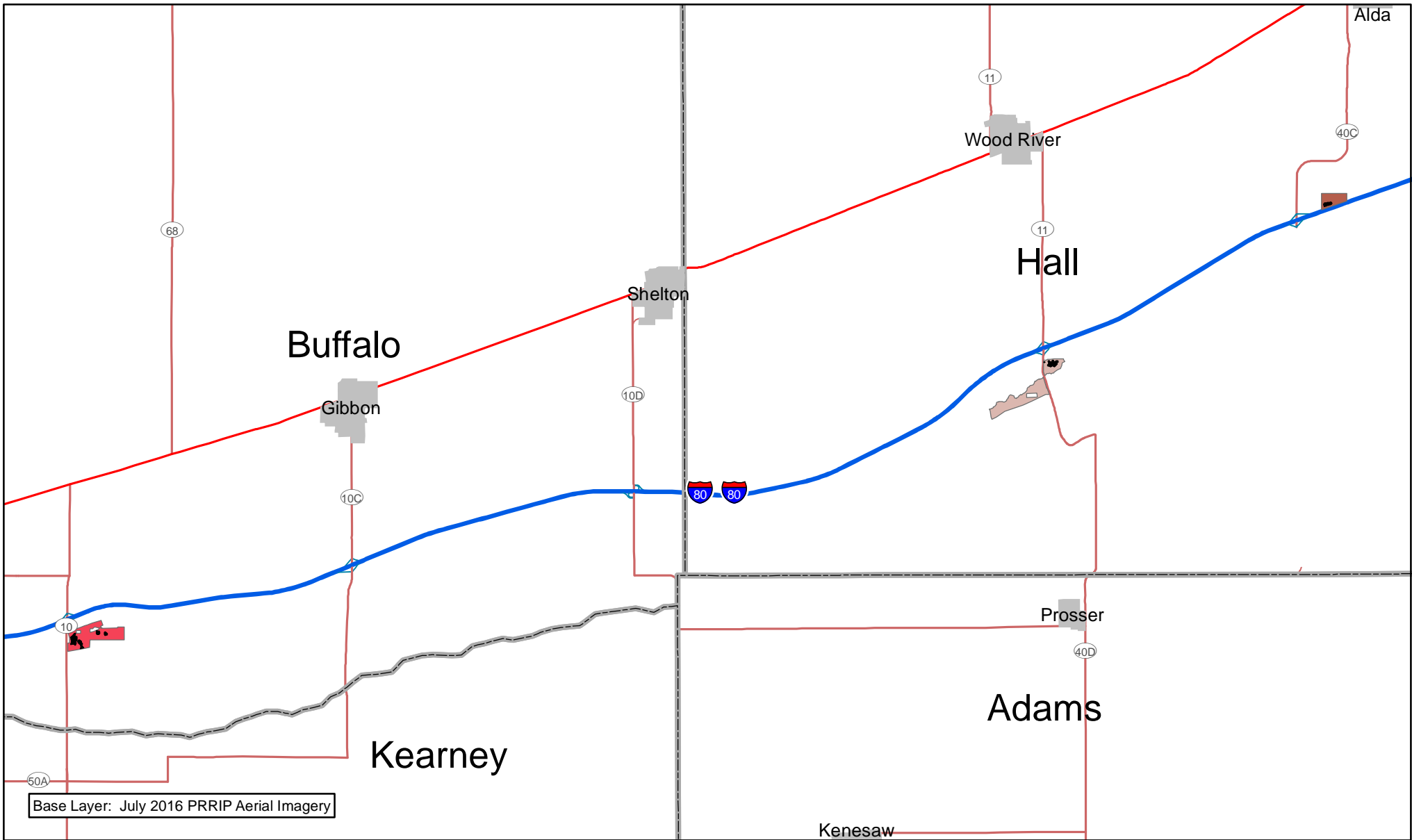
10 Miles

10

OCSW BARE GROUND WEST

Date: 01/19/2017
By: TRT

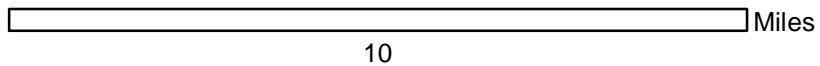
Figure 8



Legend

PRRIPTractNum

- 2009008
- 2011001
- 2011002



OCSW BARE GROUND
WEST

Date: 01/19/2017
By: TRT

Figure 8