



United States Department of Agriculture

Colorado Snow Surveys

# Water Availability Task Force Meeting

## September 14<sup>th</sup>, 2017

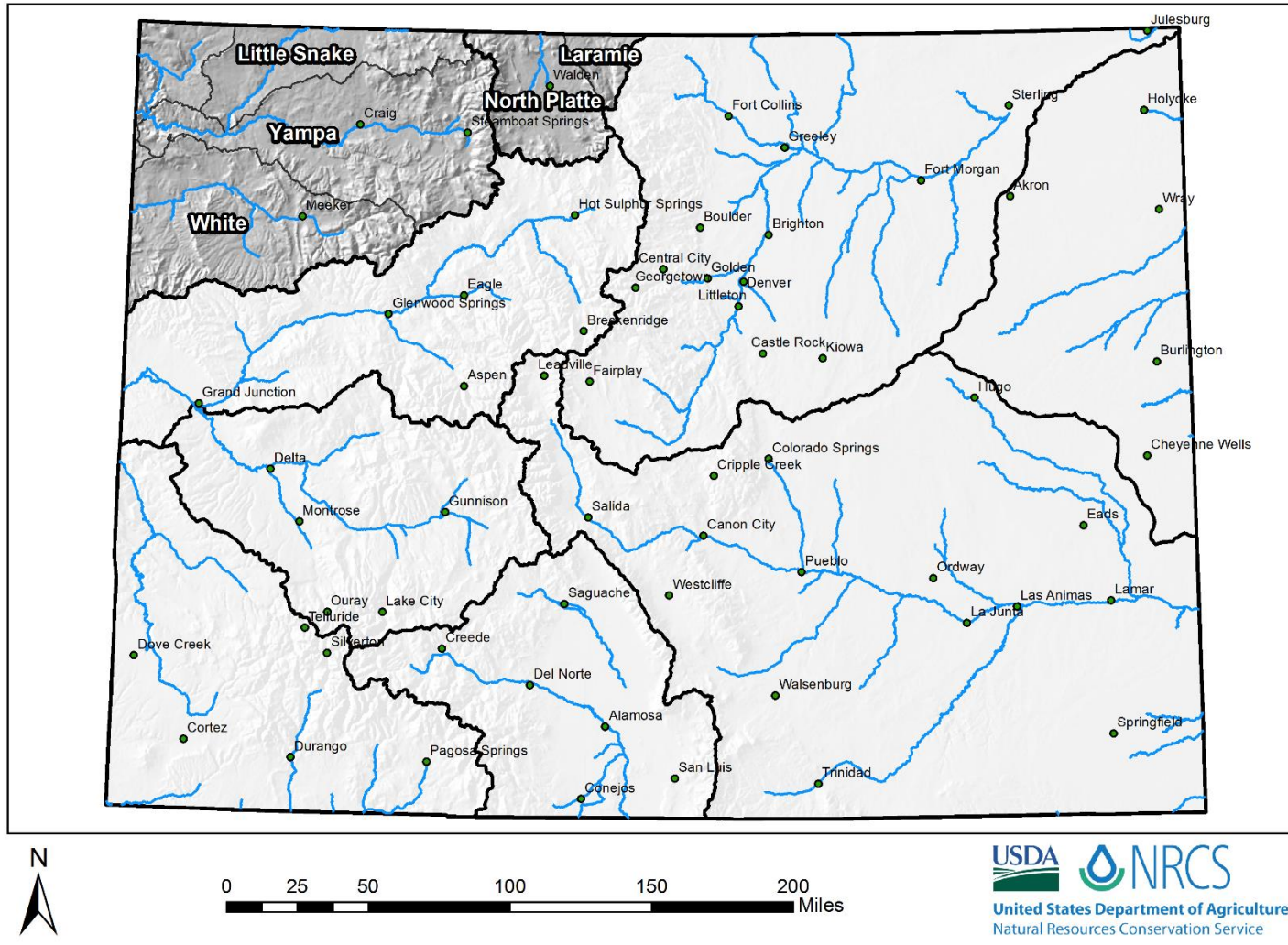
### NRCS Snow Survey and Water Supply Forecasting Program

Brian Domonkos  
Snow Survey Supervisor  
720-544-2852

<http://www.nrcs.usda.gov/wps/portal/nrcs/main/co/snow/>

## Major Basin Summary

Yampa, White, and North Platte River Basins

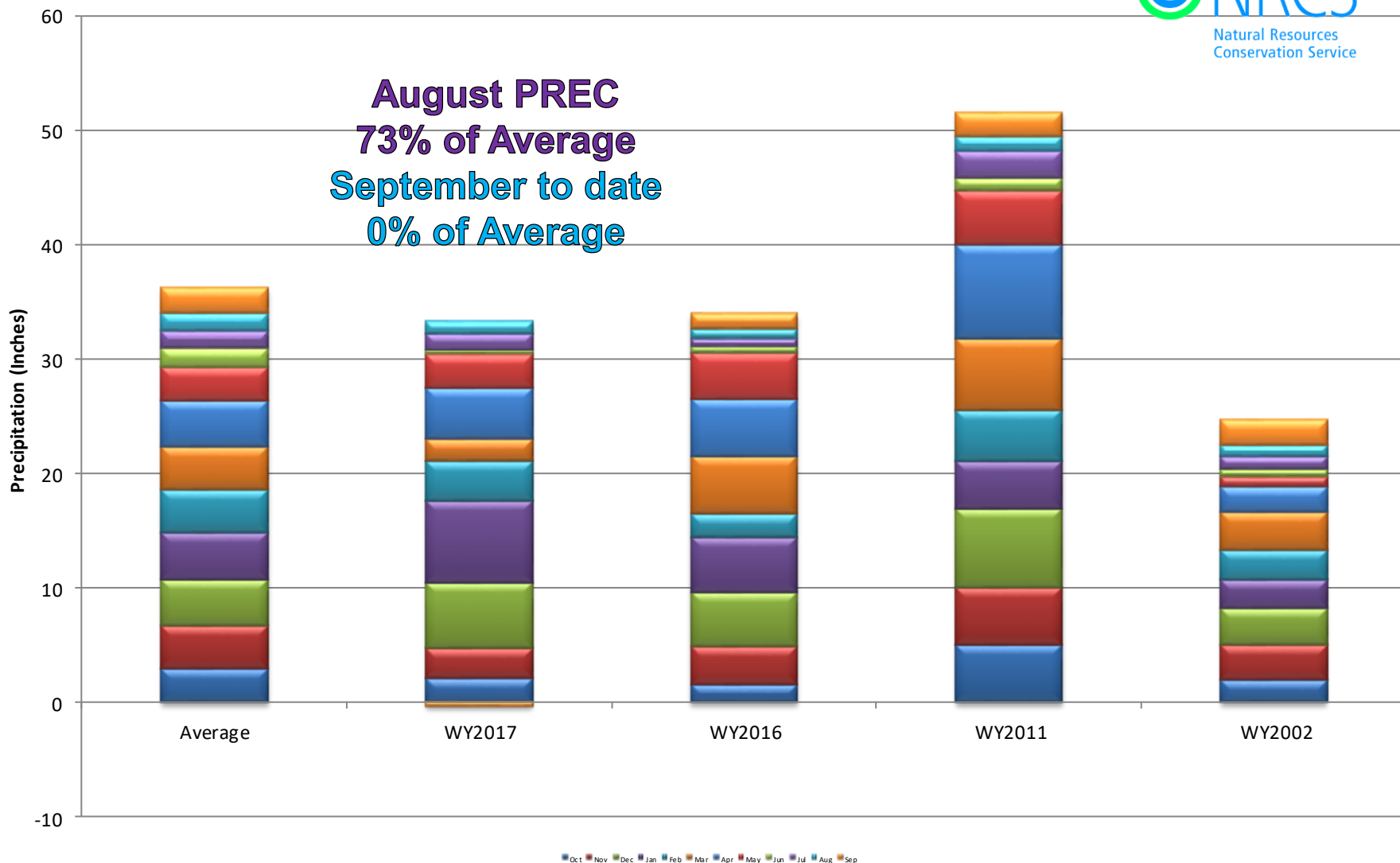


## Yampa & White River Basins High/Low Monthly Precipitation Summary

*Based on Provisional SNOTEL data as of Sep 13, 2017*

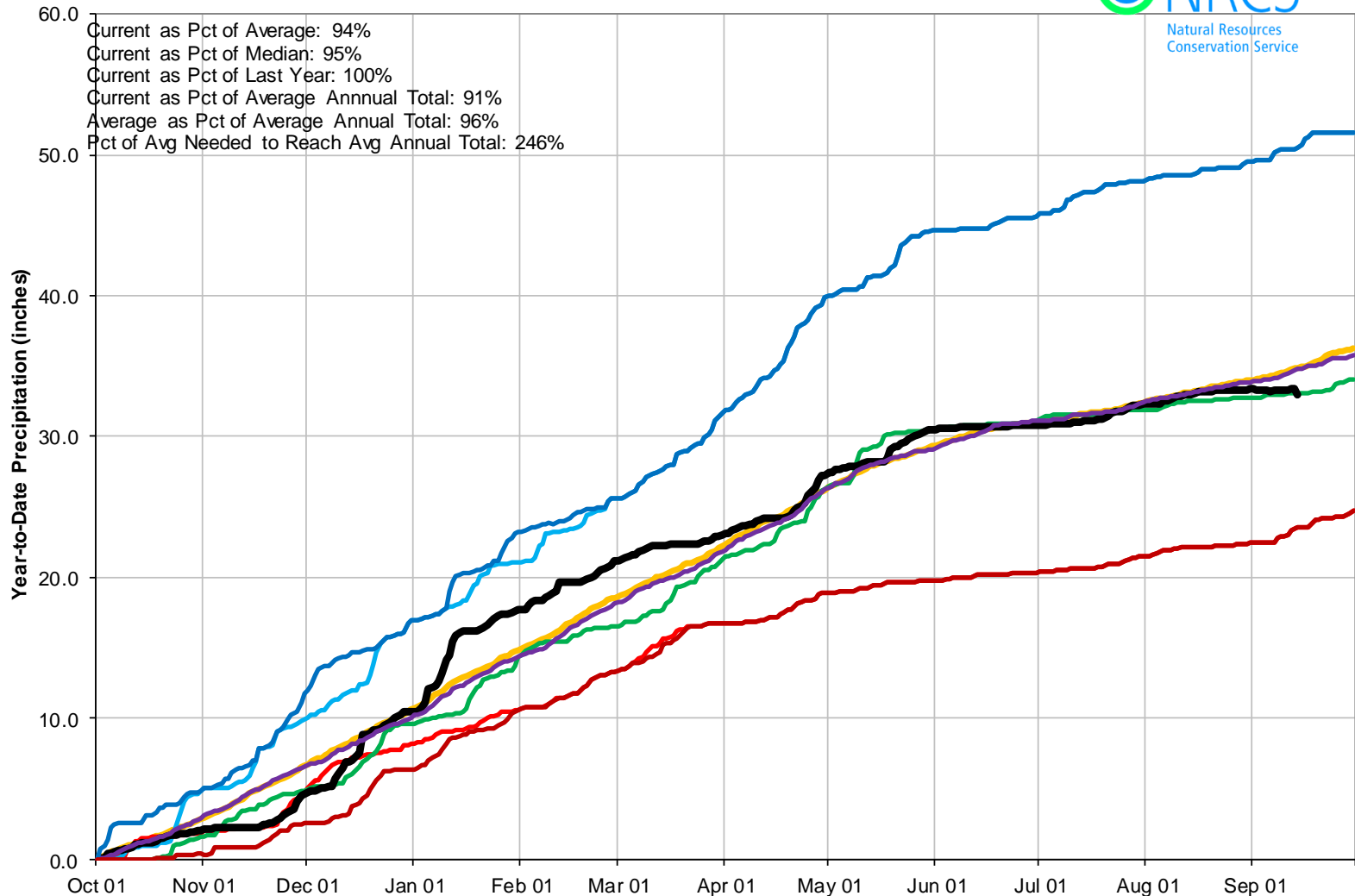


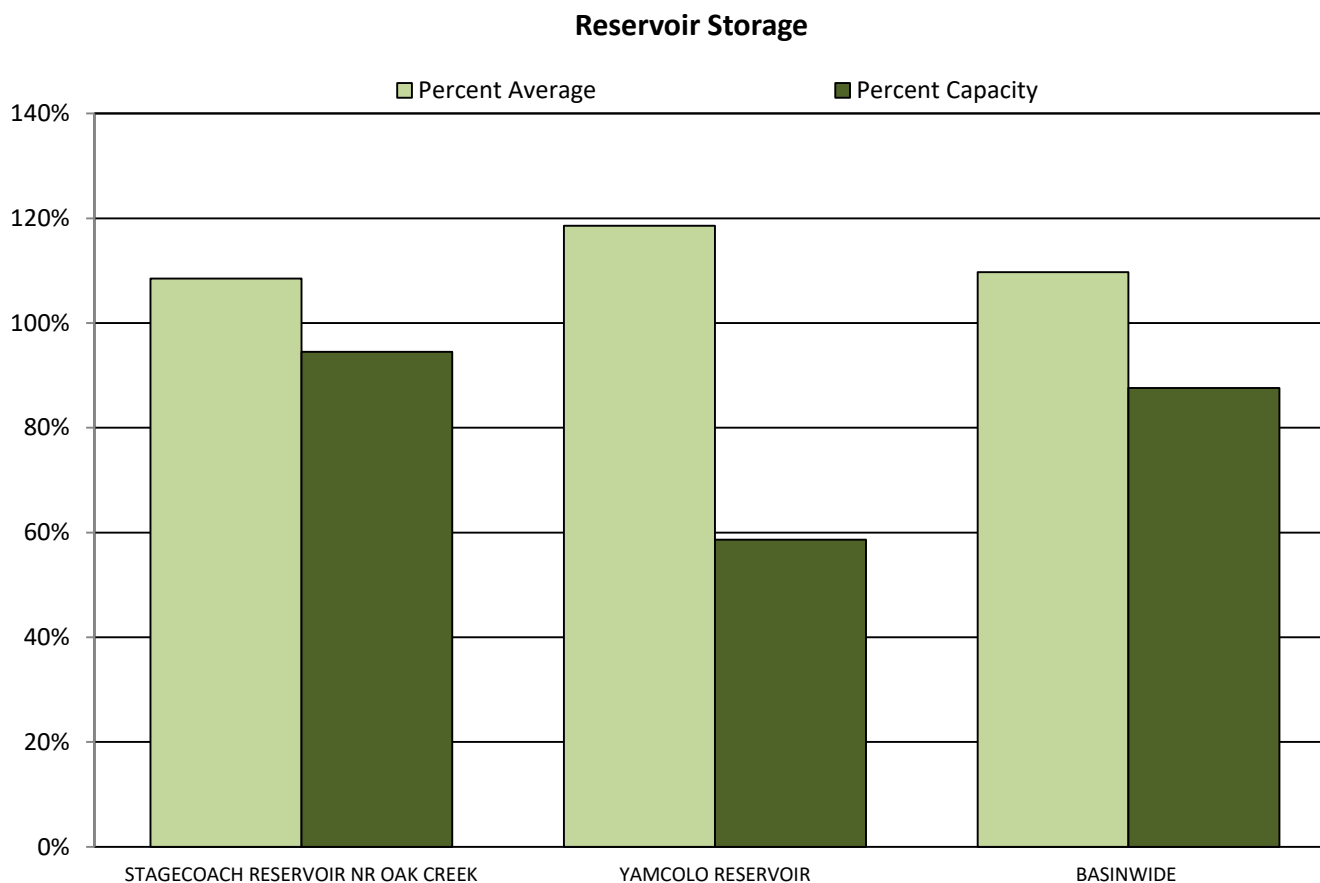
**August PREC**  
**73% of Average**  
**September to date**  
**0% of Average**



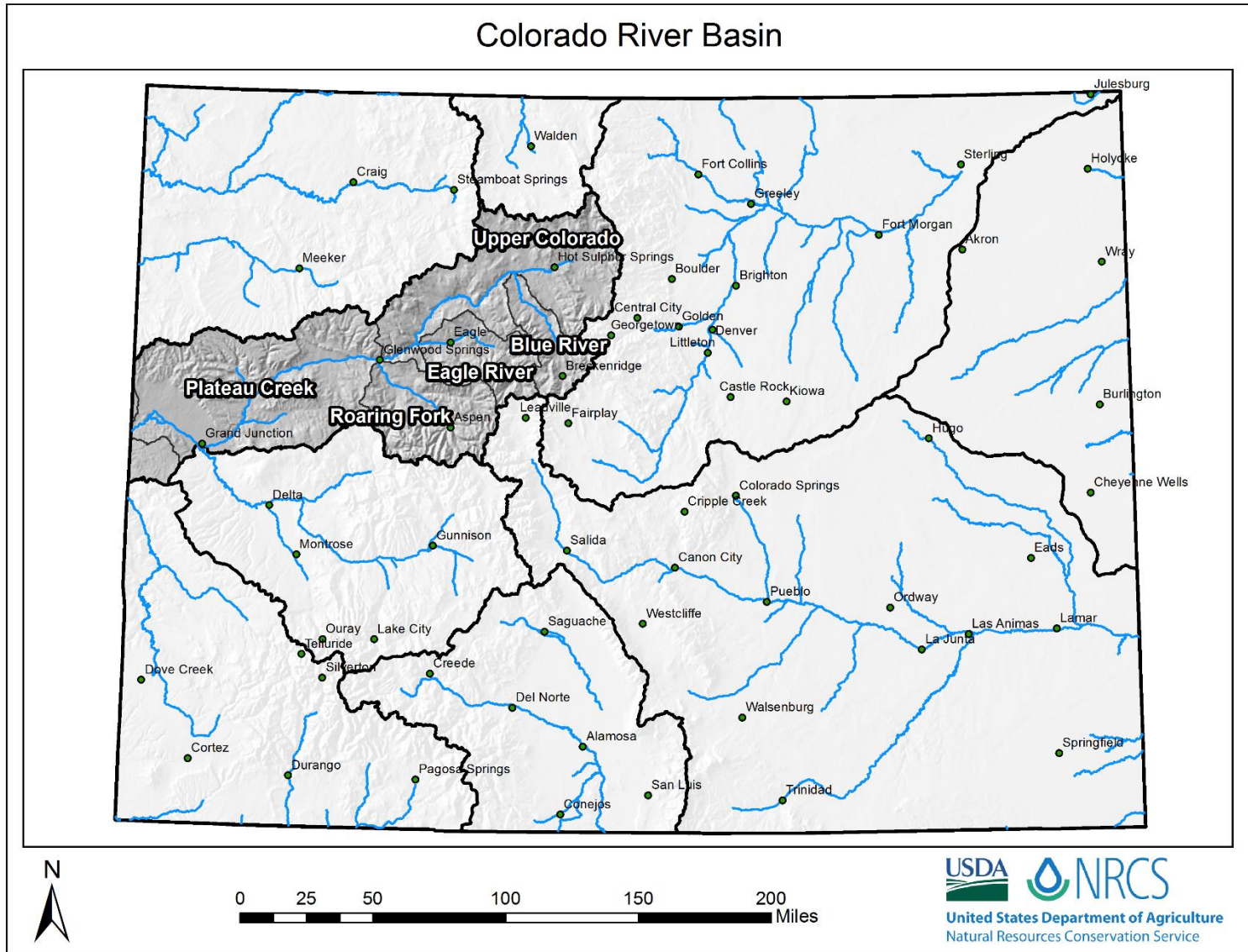
## Yampa & White River Basins High/Low Year-to-Date Precipitation Summary

*Based on Provisional SNOTEL data as of Sep 14, 2017*



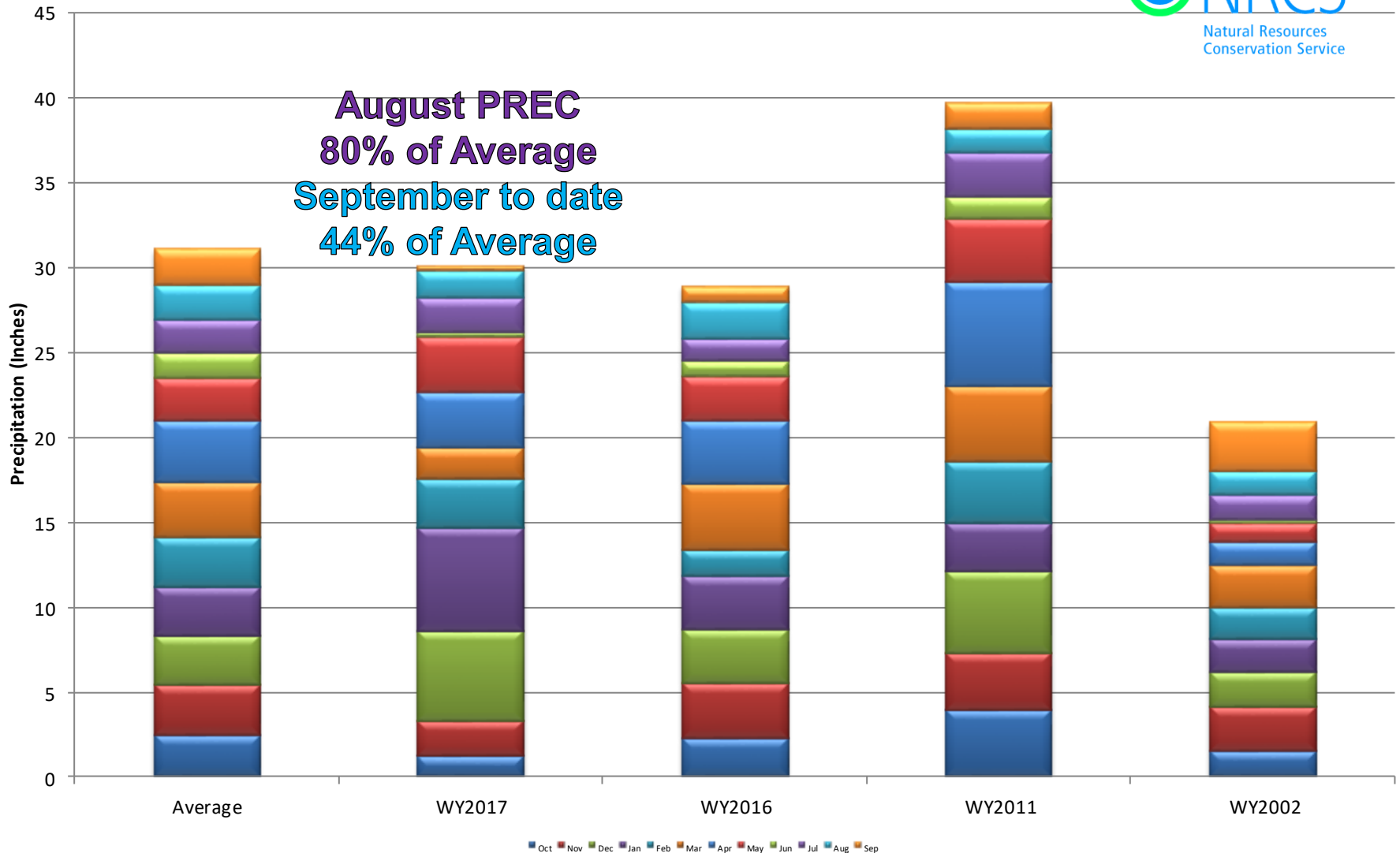


## Major Basin Summary



## Upper Colorado River Basin High/Low Monthly Precipitation Summary

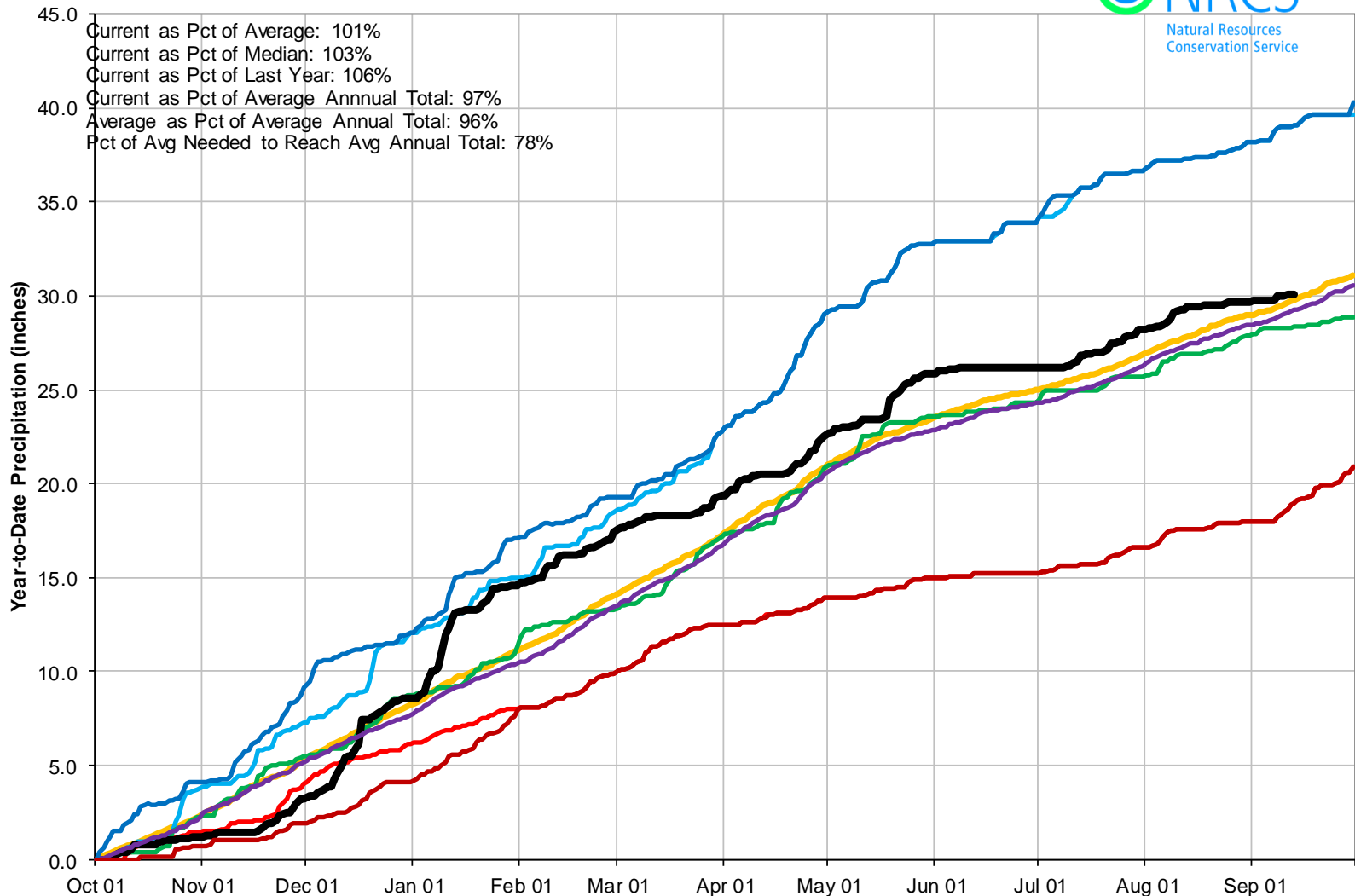
*Based on Provisional SNOTEL data as of Sep 13, 2017*



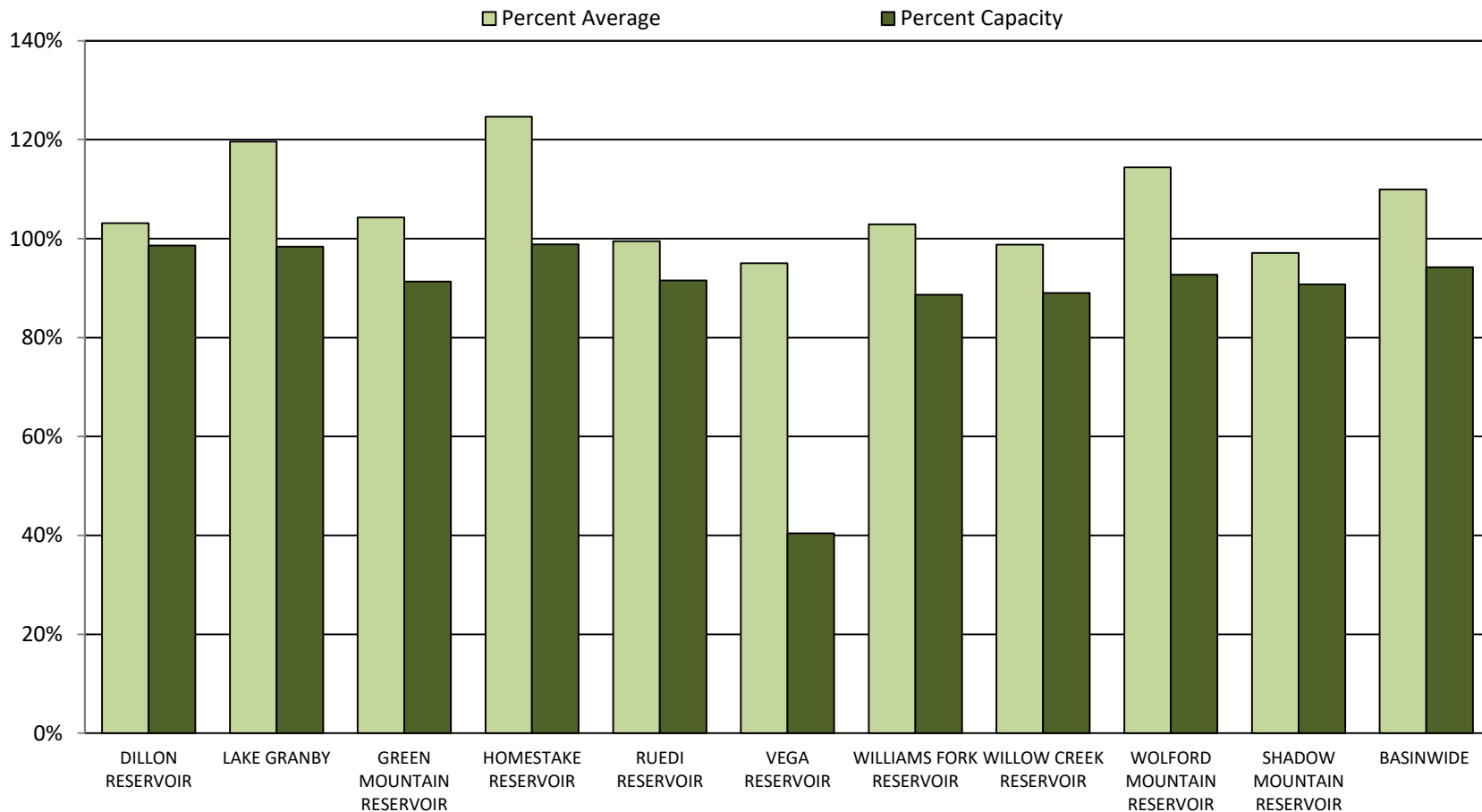


## Upper Colorado River Basin High/Low Year-to-Date Precipitation Summary

*Based on Provisional SNOTEL data as of Sep 13, 2017*

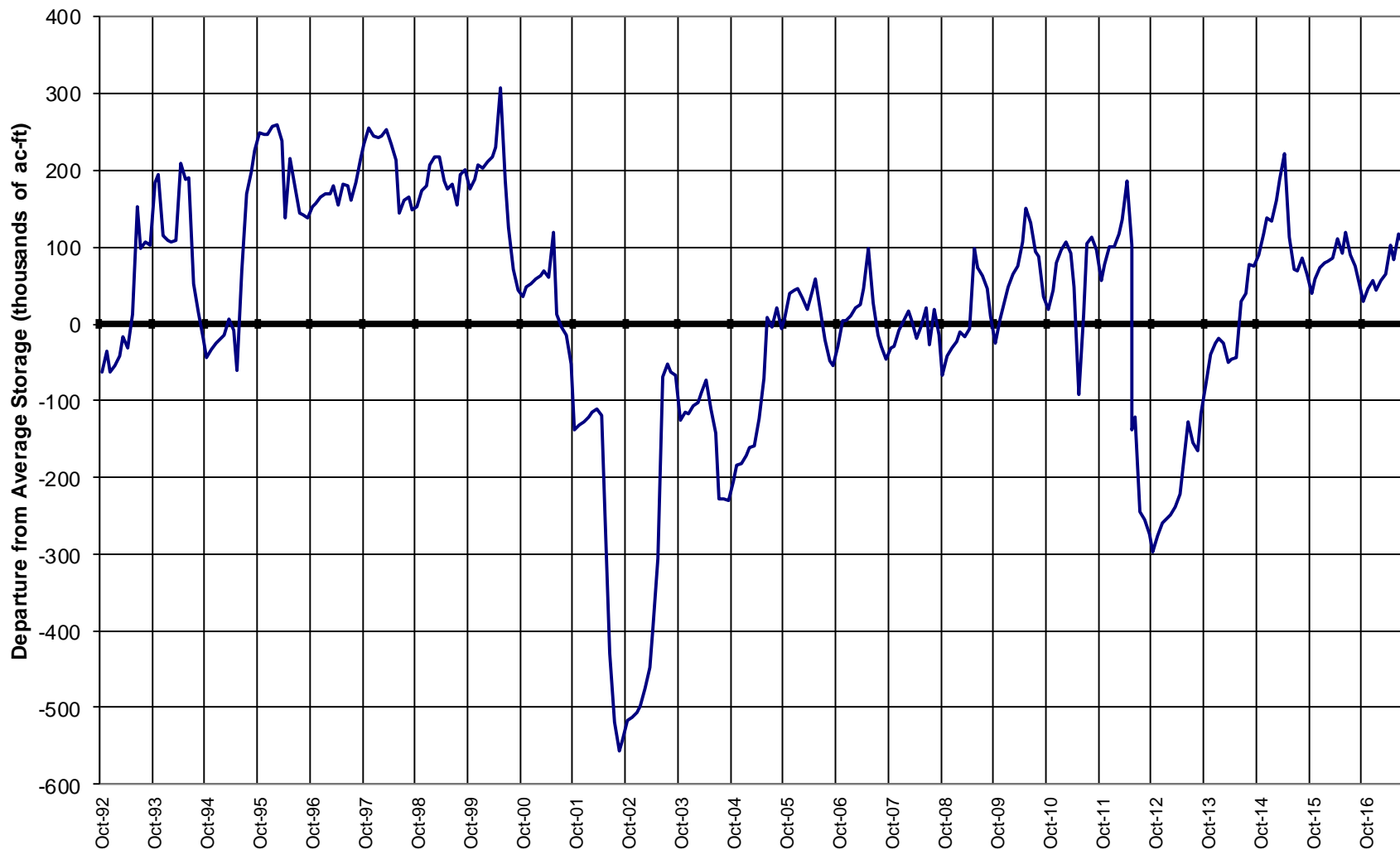


## Reservoir Storage



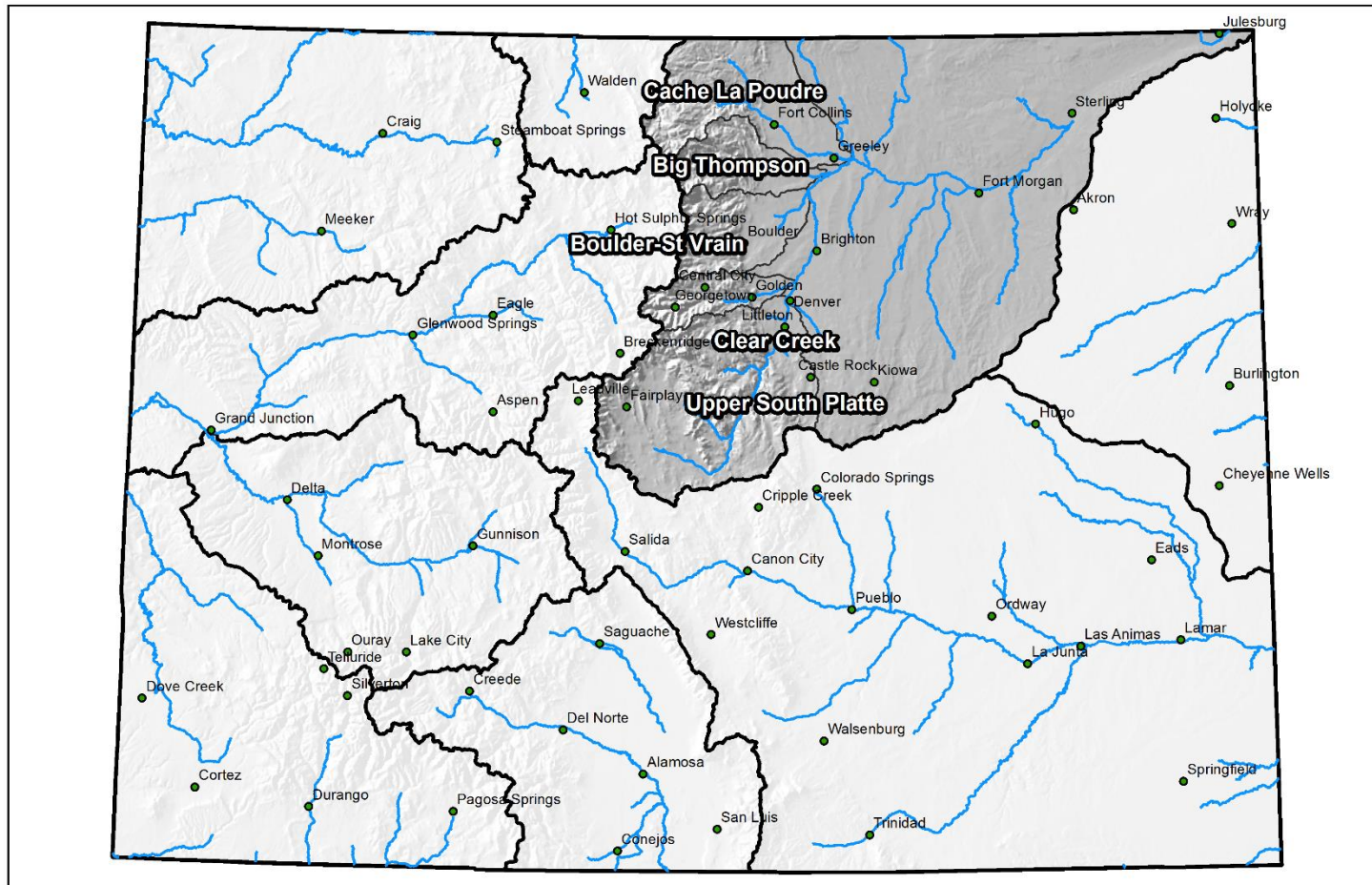


## COLORADO RIVER BASIN Reservoir Storage Departure from Average



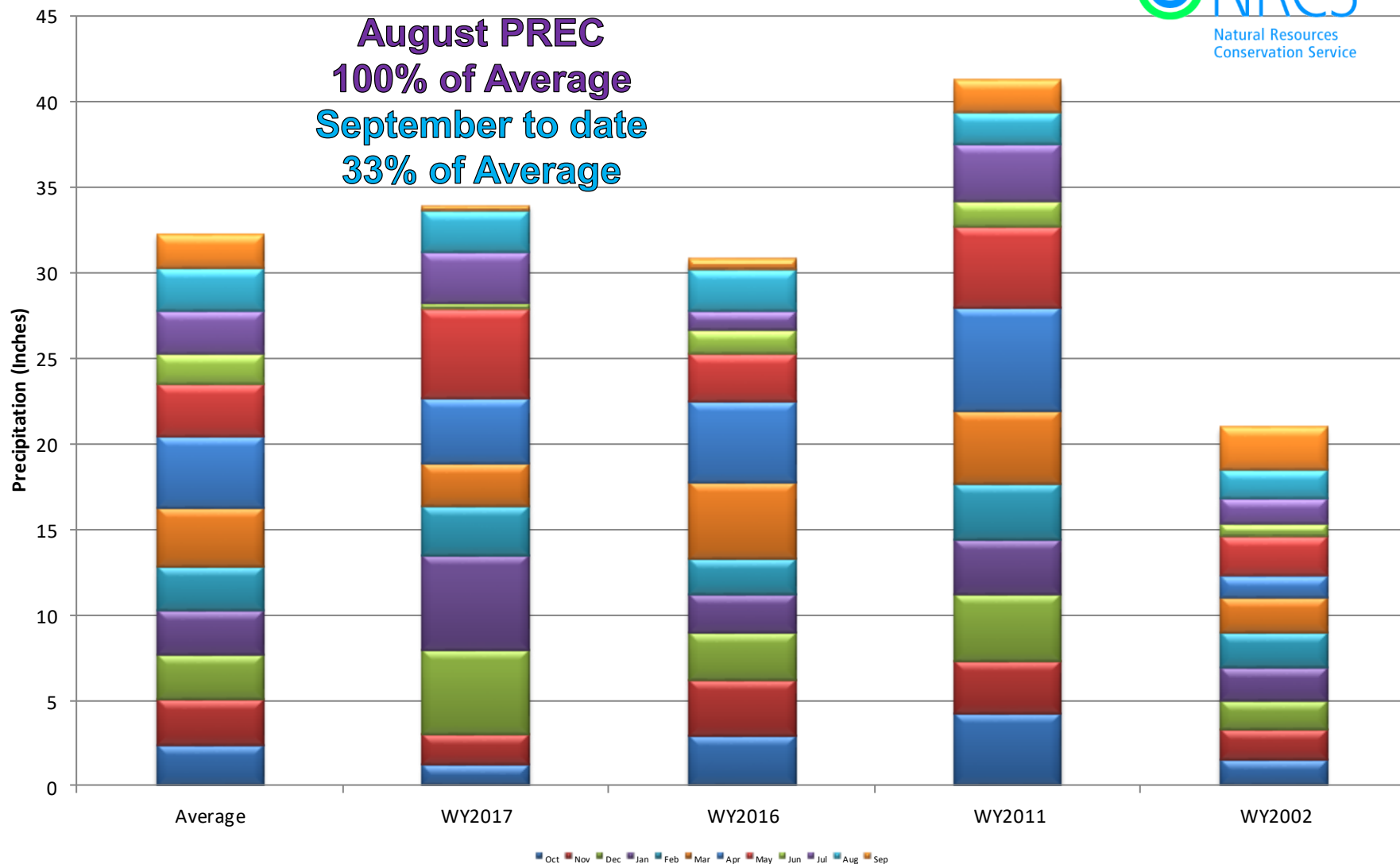
## Major Basin Summary

### South Platte River Basin



## South Platte River Basin High/Low Monthly Precipitation Summary

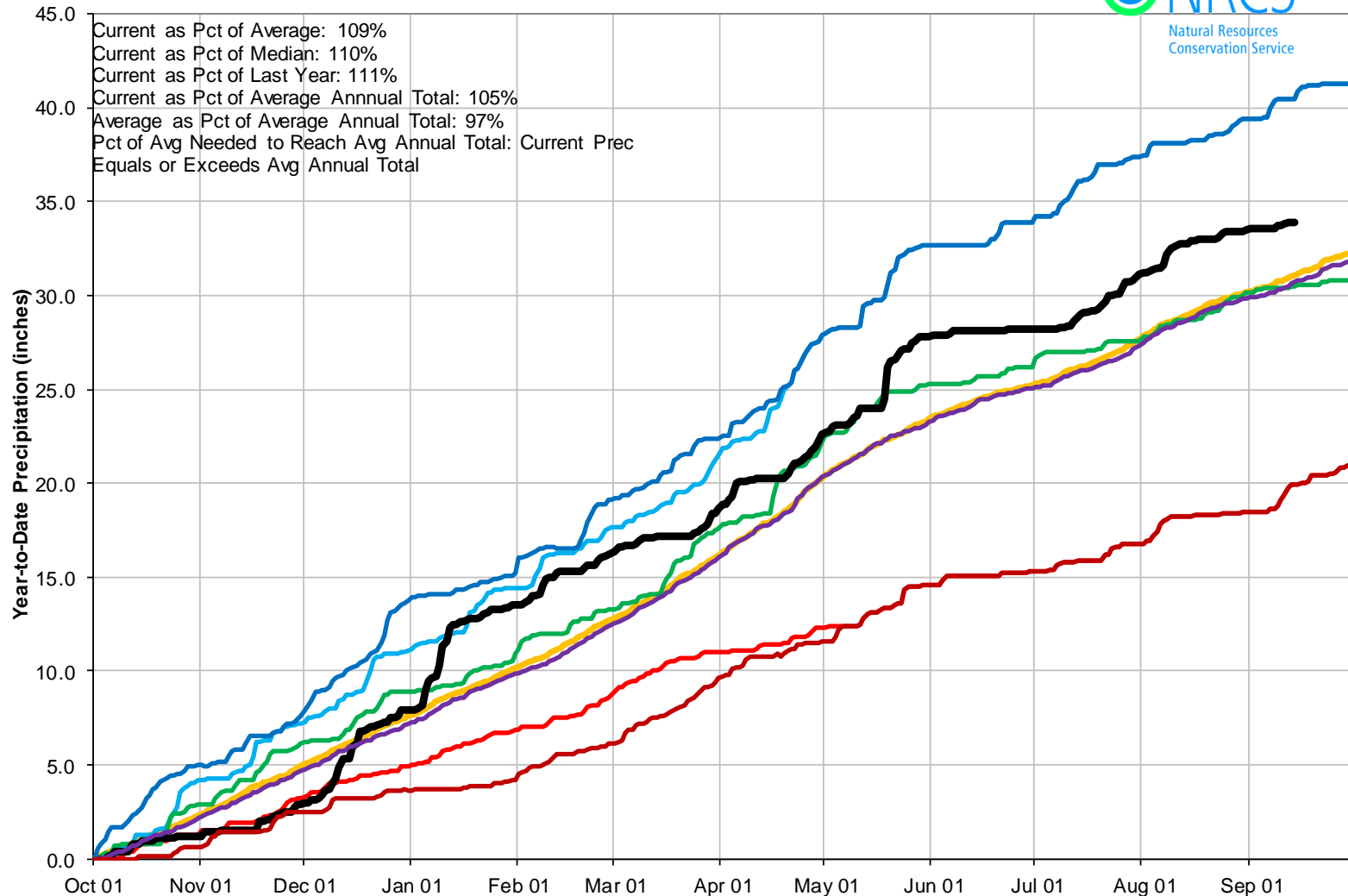
**Based on Provisional SNOTEL data as of Sep 14, 2017**





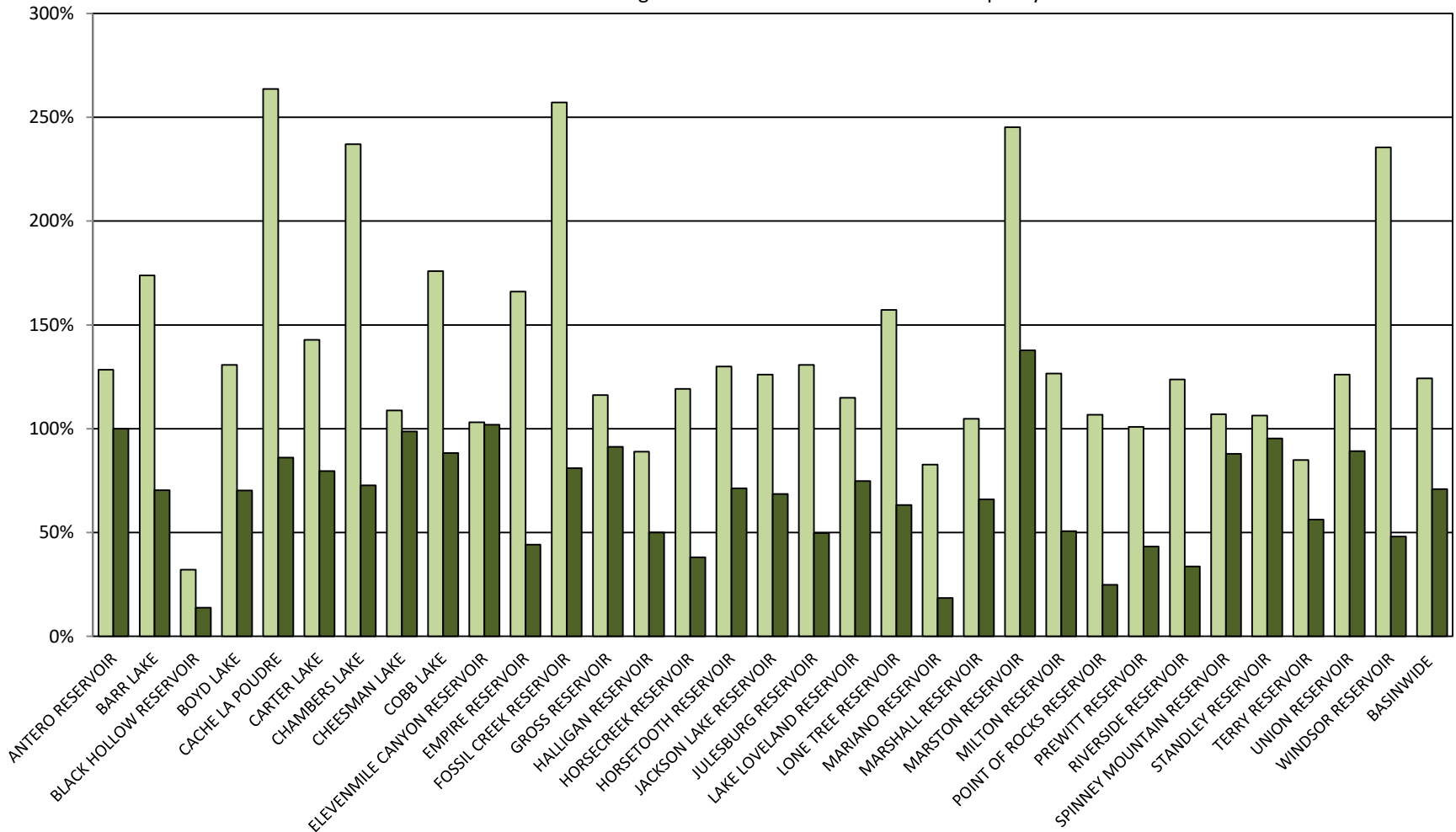
## South Platte River Basin High/Low Year-to-Date Precipitation Summary

*Based on Provisional SNOTEL data as of Sep 14, 2017*



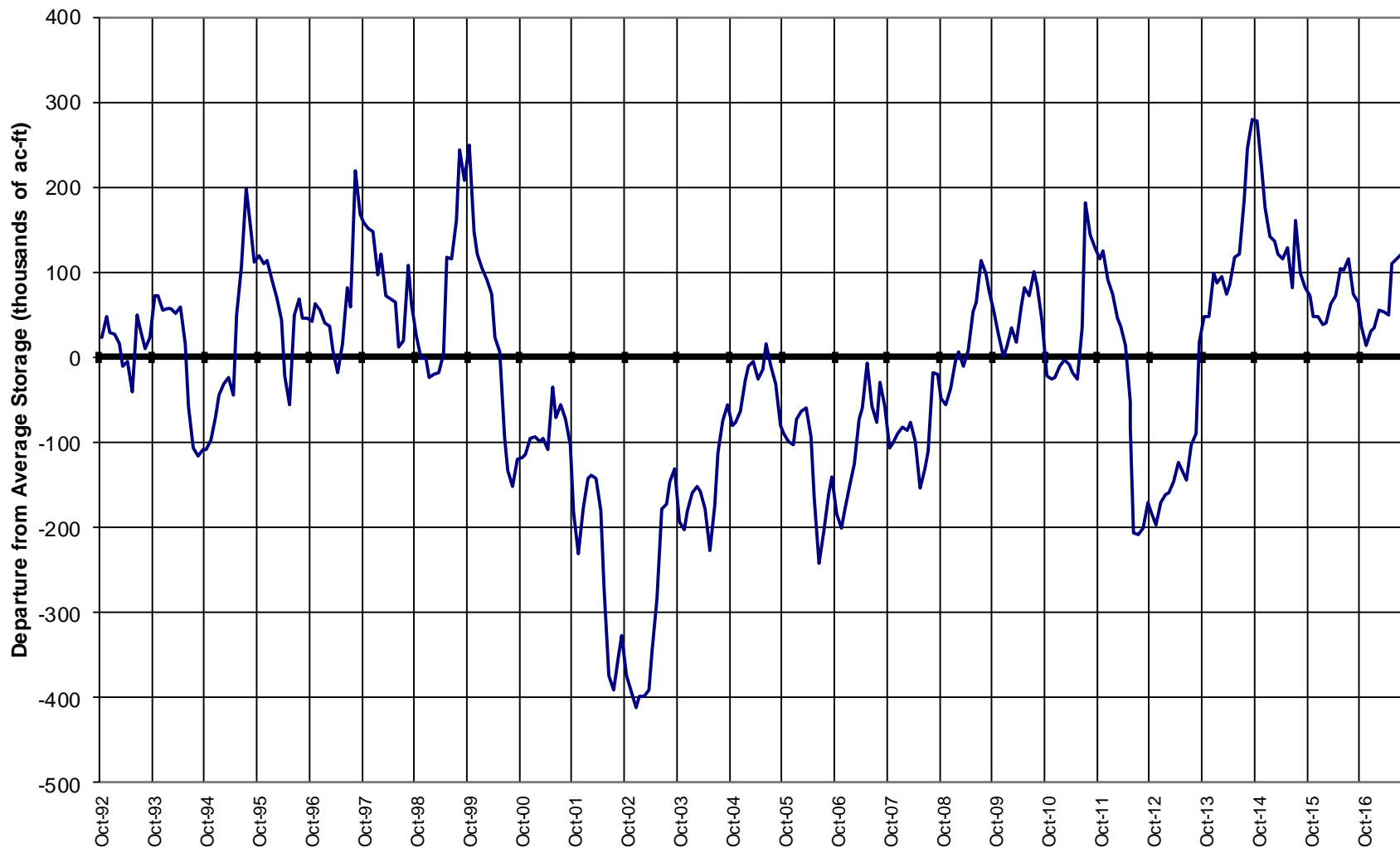
## Reservoir Storage

■ Percent Average      ■ Percent Capacity



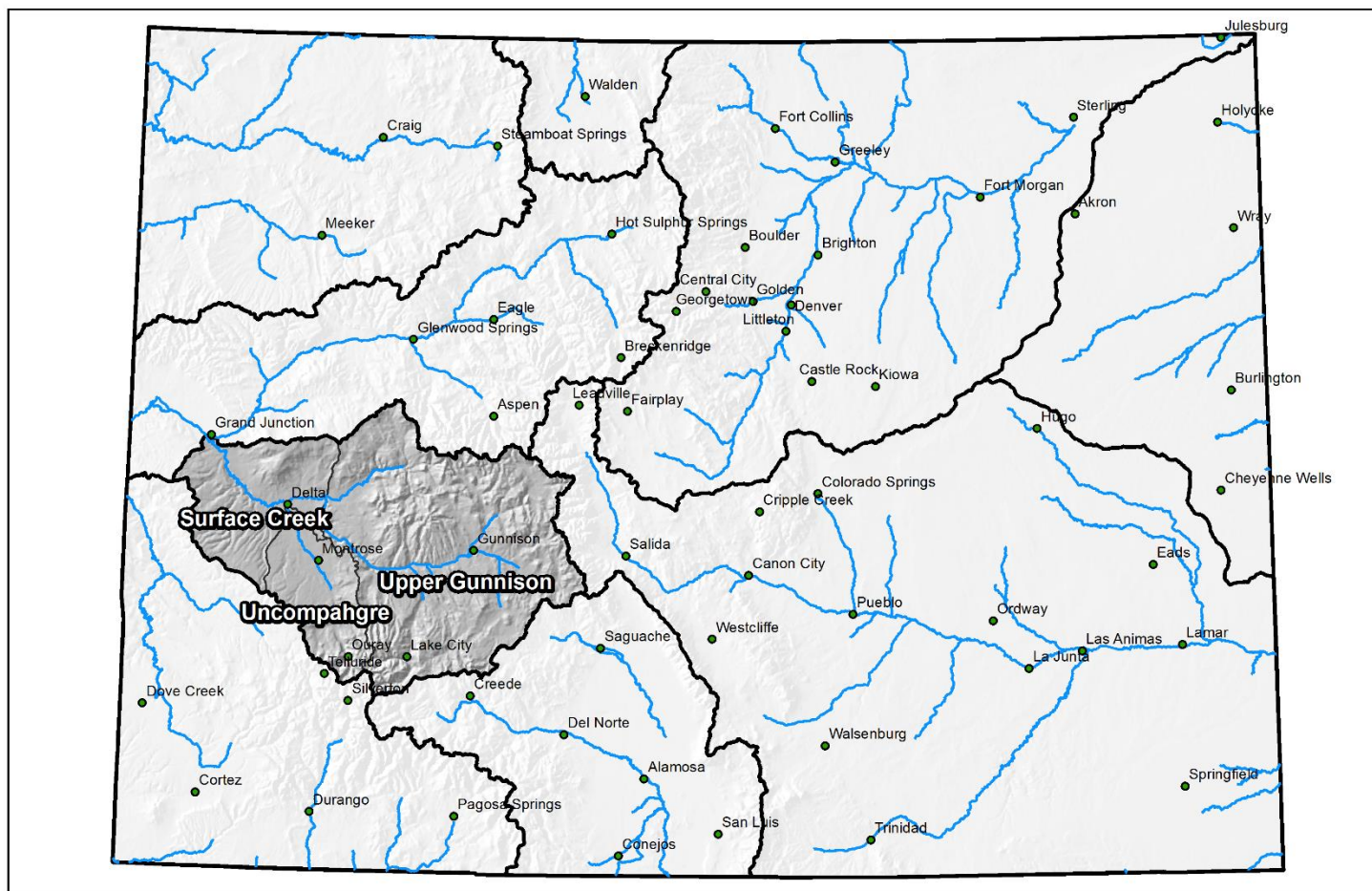


## SOUTH PLATTE RIVER BASIN Reservoir Storage Departure from Average



## Major Basin Summary

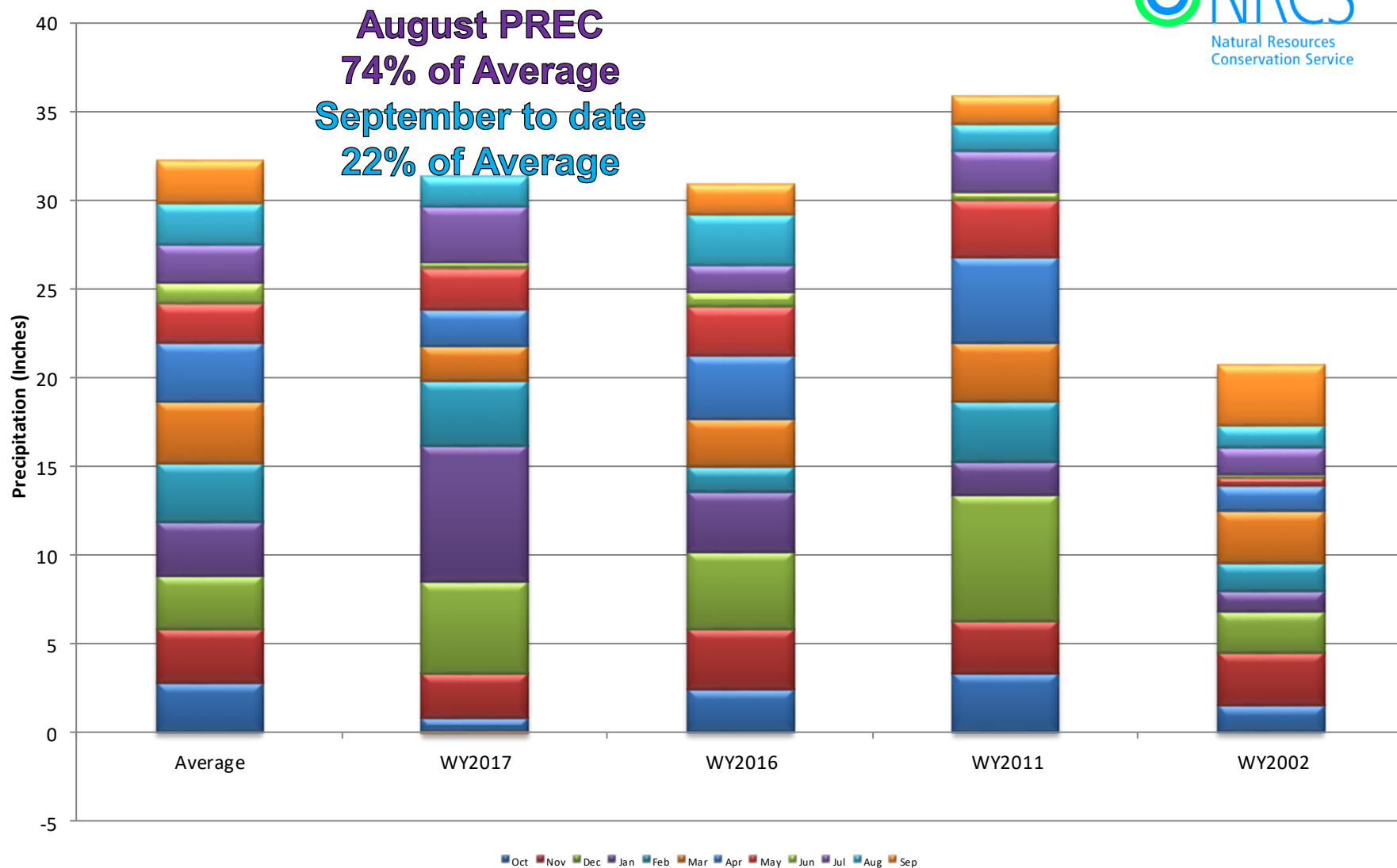
Gunnison River Basin



0 25 50 100 150 200 Miles

## Gunnison River Basin High/Low Monthly Precipitation Summary

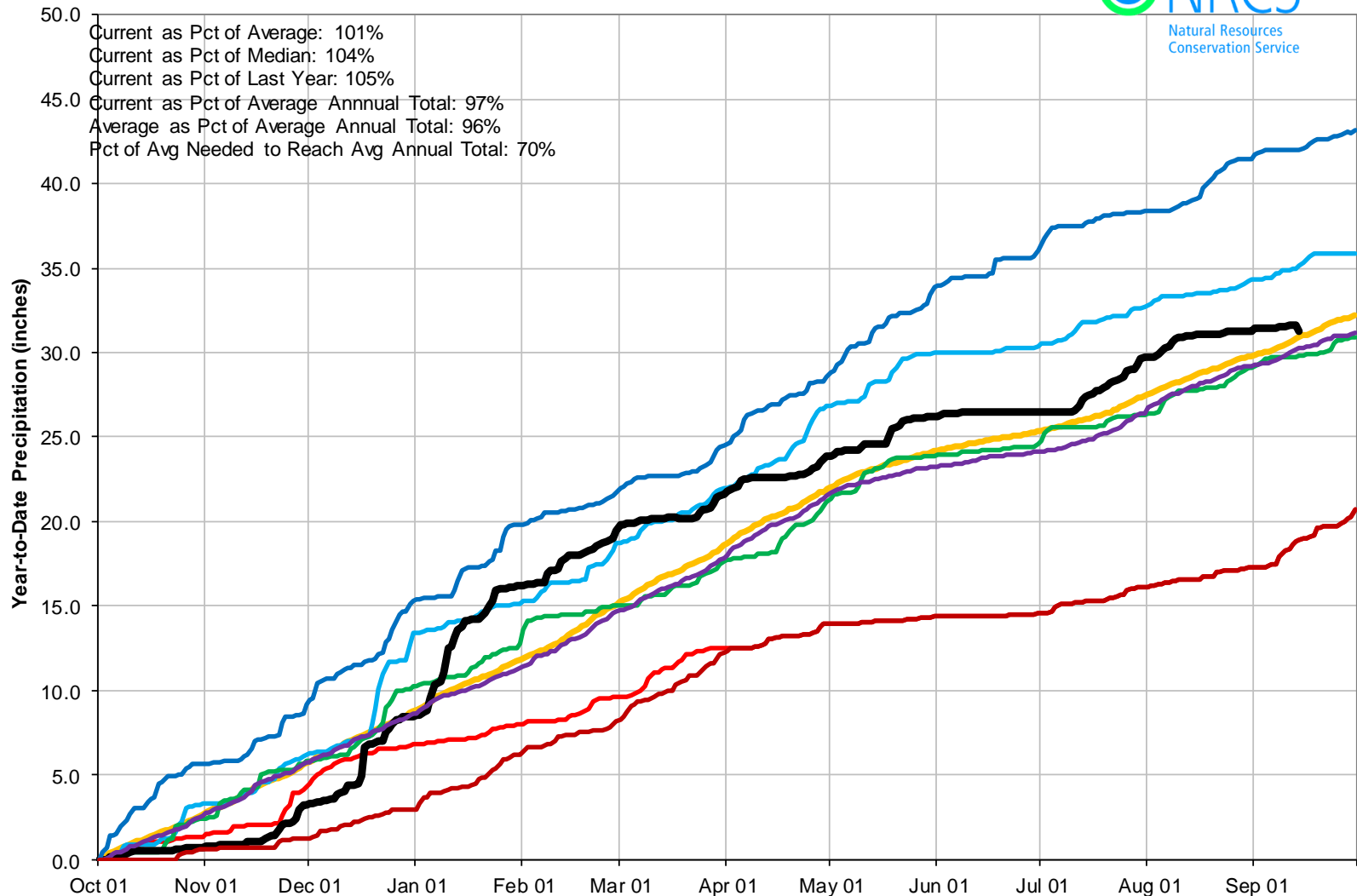
**Based on Provisional SNOTEL data as of Sep 14, 2017**



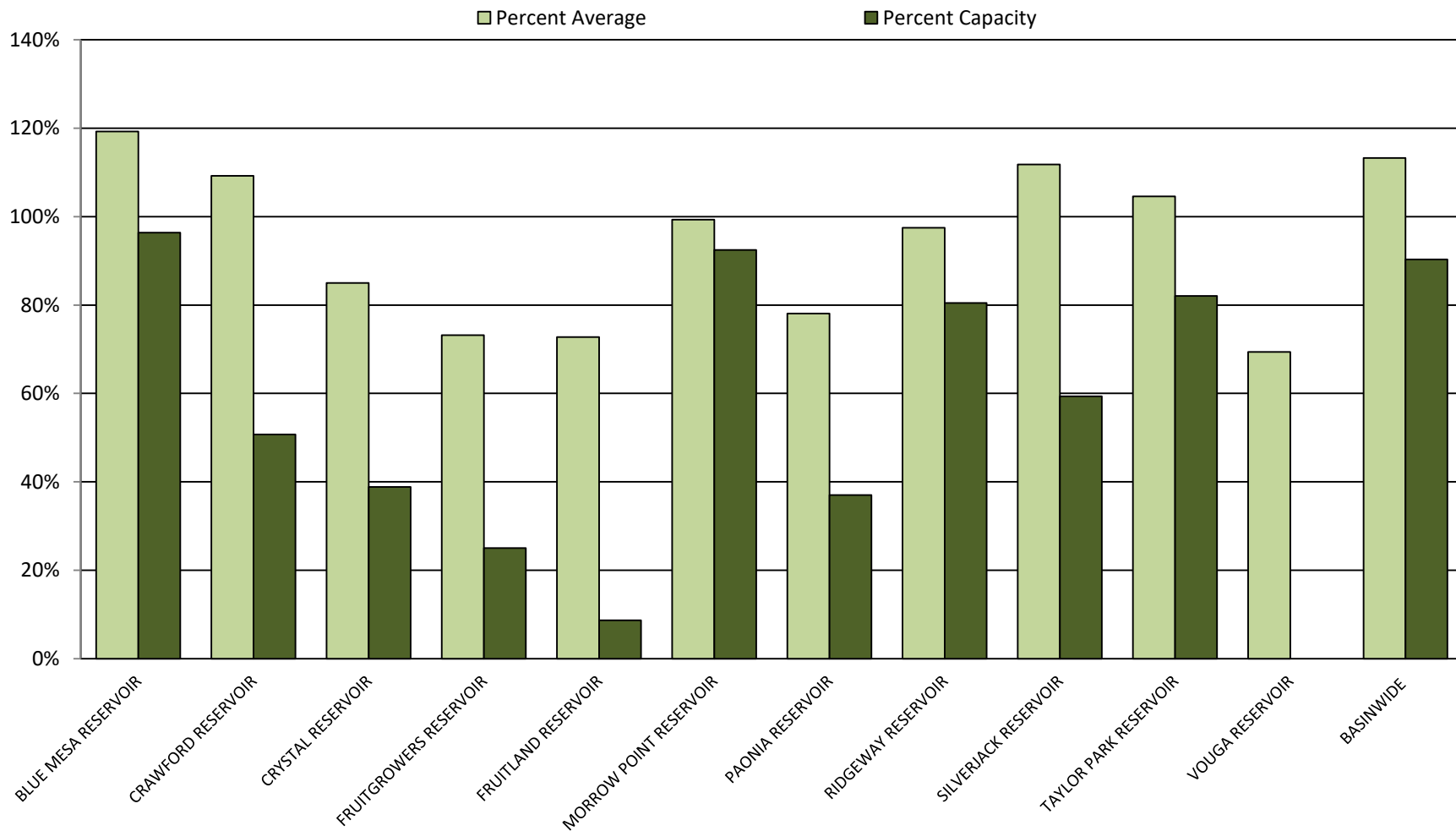


## Gunnison River Basin High/Low Year-to-Date Precipitation Summary

*Based on Provisional SNOTEL data as of Sep 14, 2017*

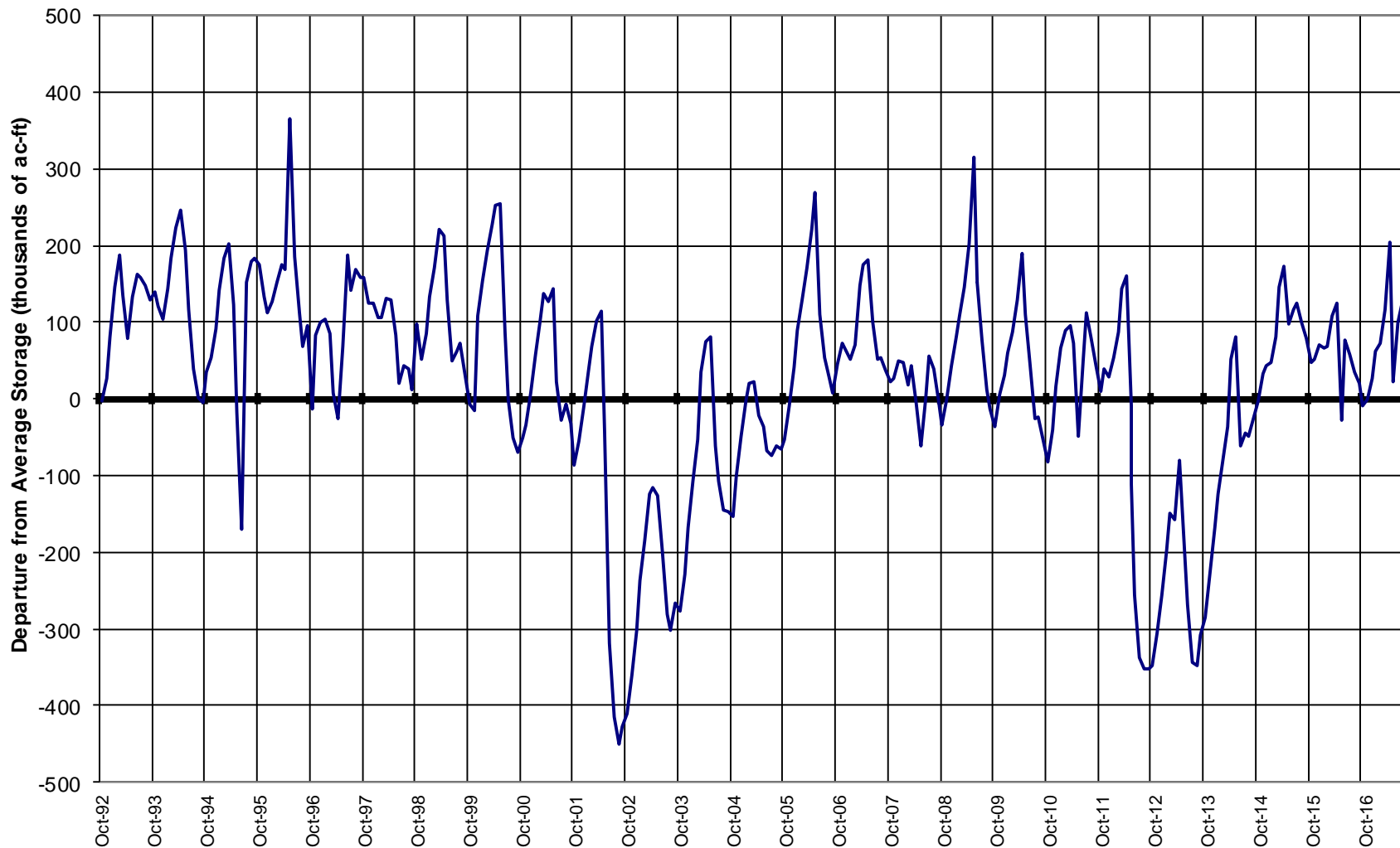


## Reservoir Storage



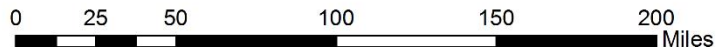
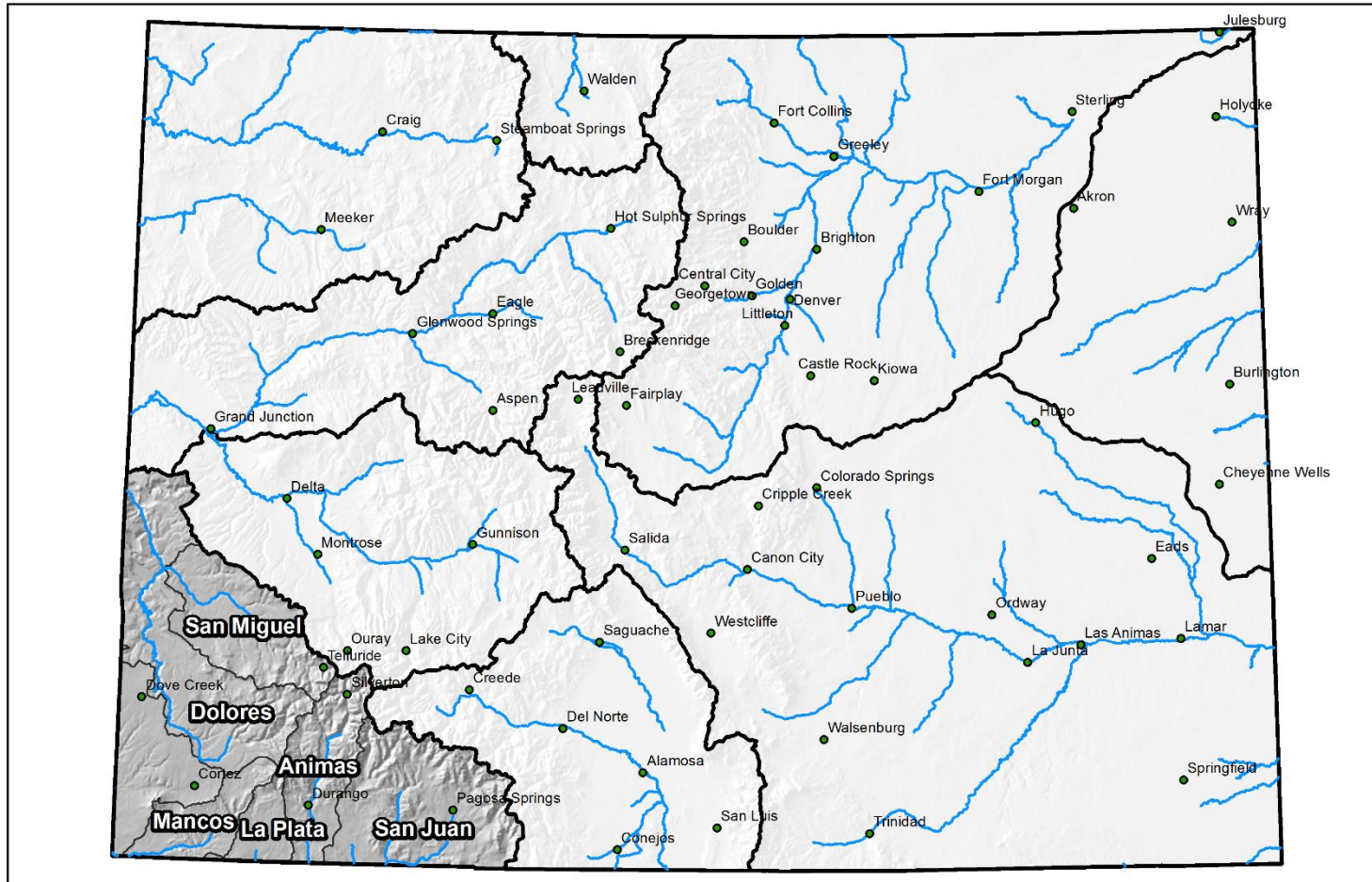


## GUNNISON RIVER BASIN Reservoir Storage Departure from Average

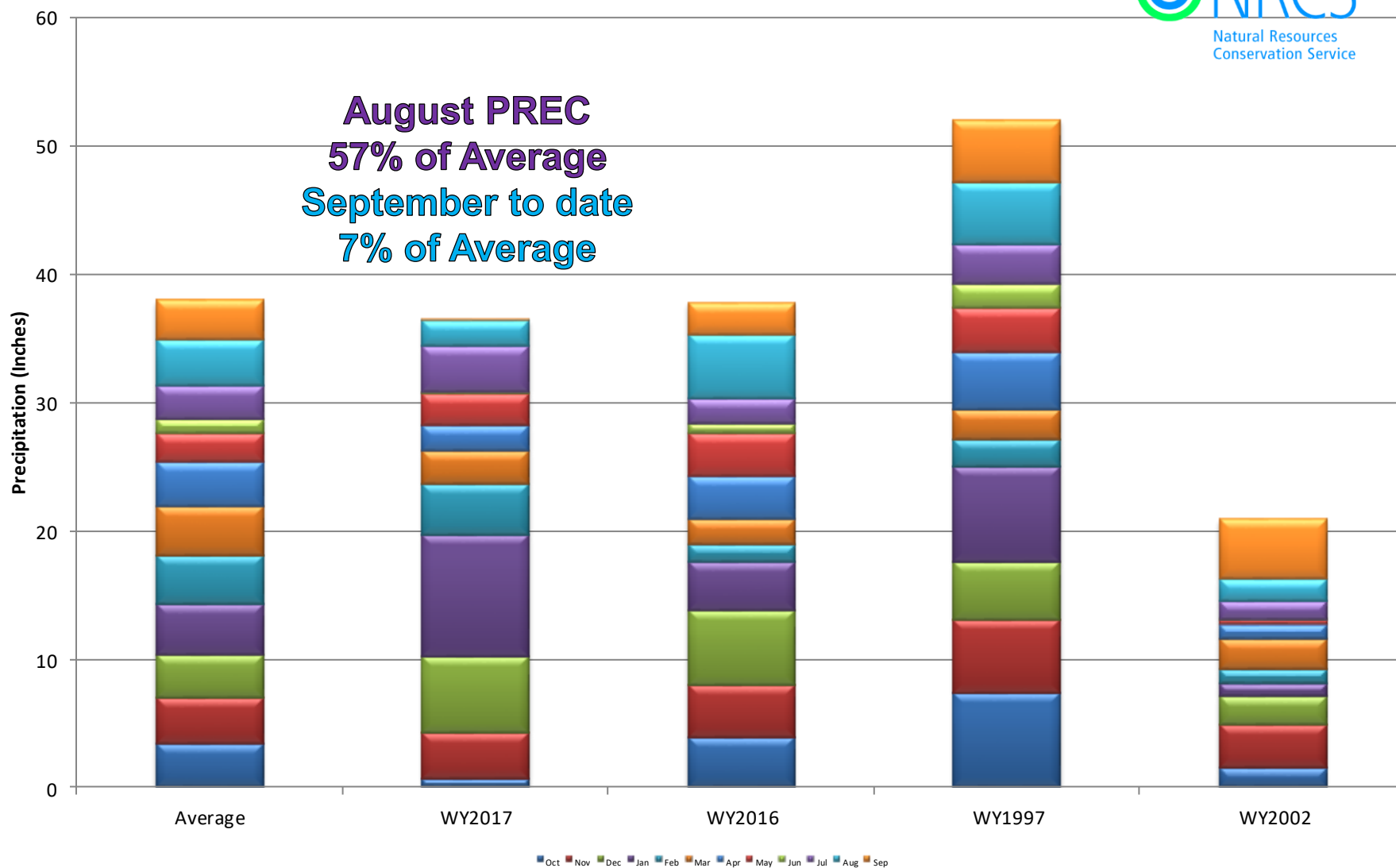


## Major Basin Summary

San Miguel, Dolores, Animas, and San Juan River Basins

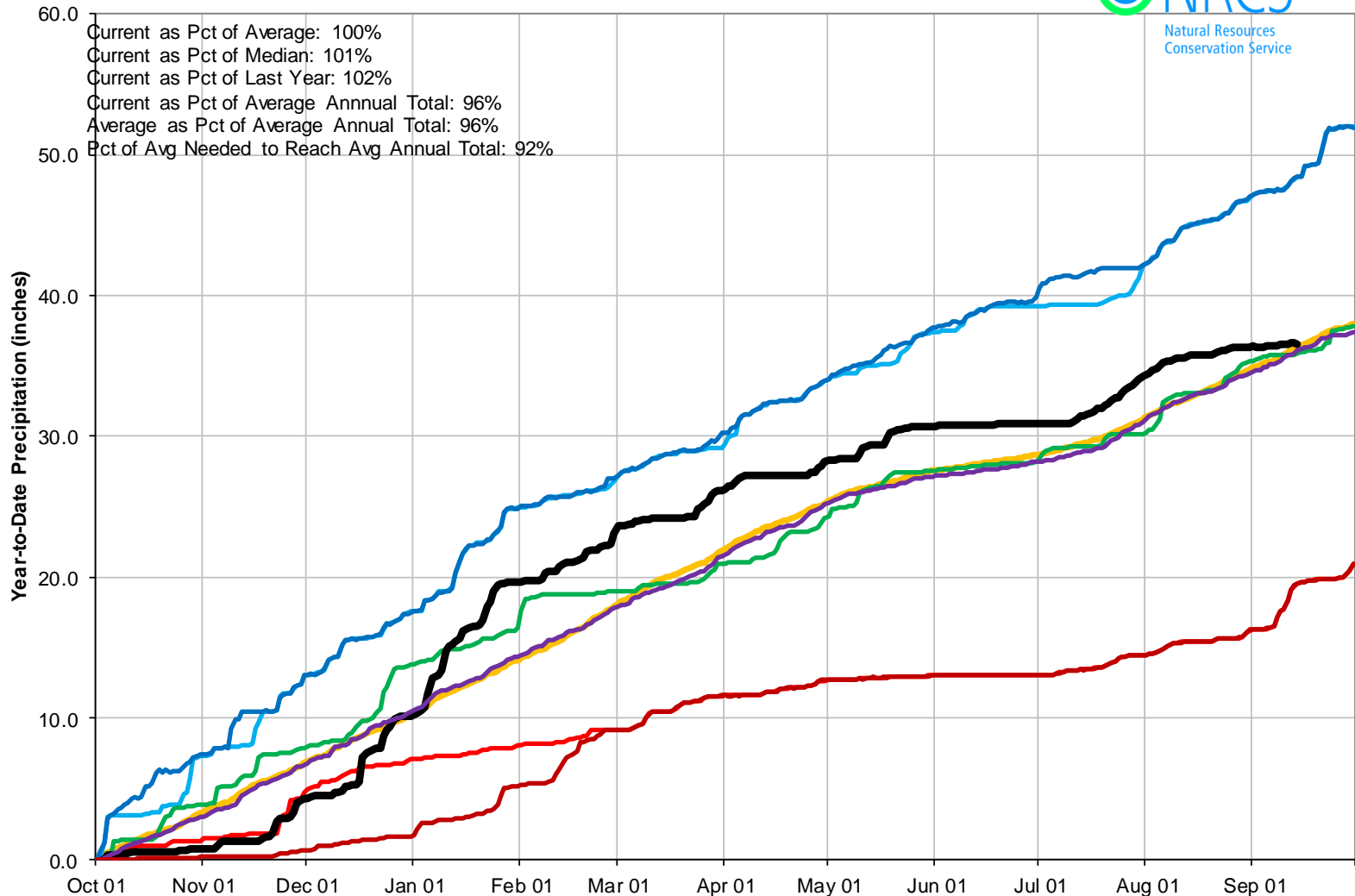


## San Miguel, Dolores, Animas & San Juan River Basins High/Low Monthly Precipitation Summary

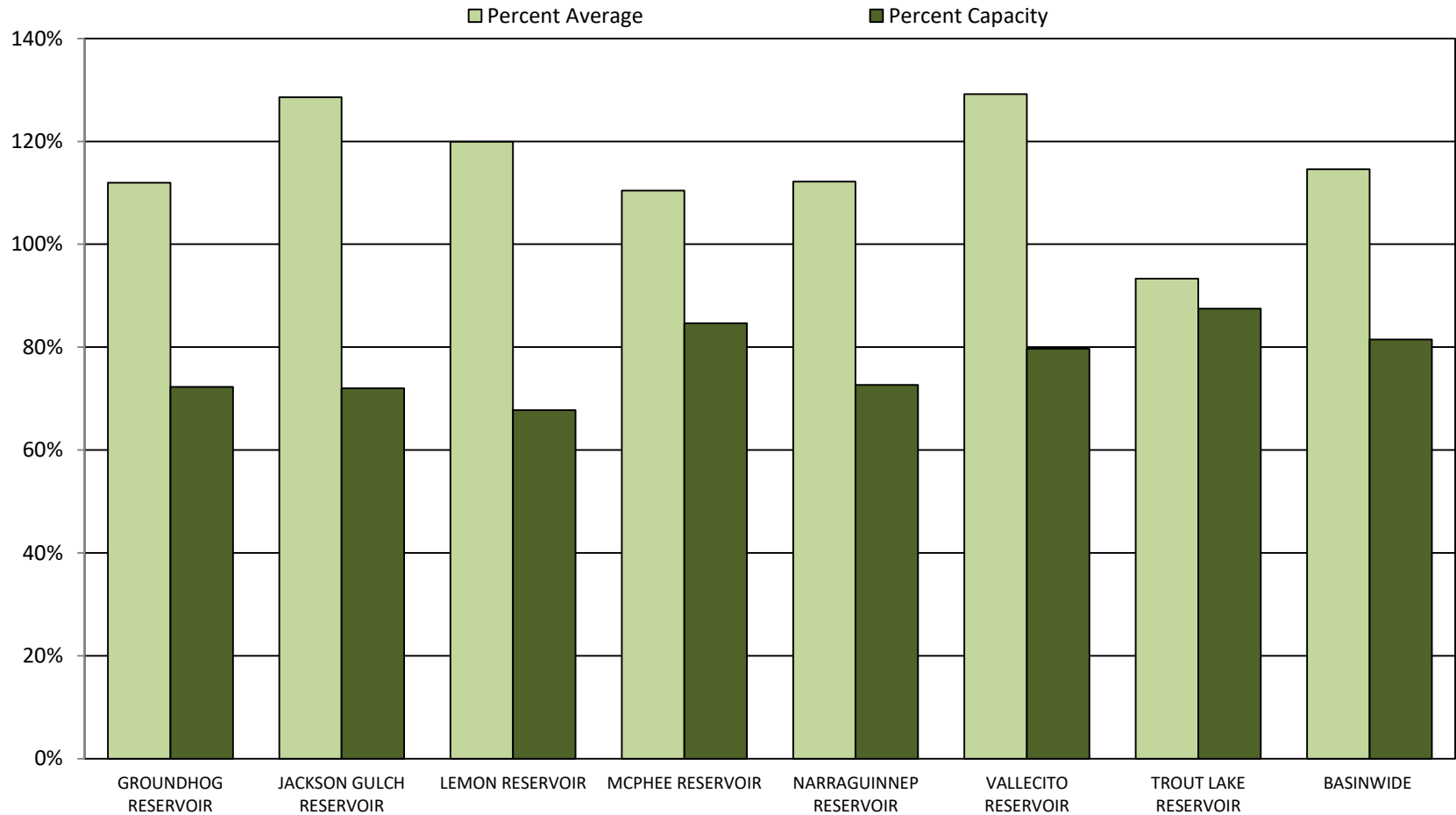


## San Miguel, Dolores, Animas & San Juan River Basins High/Low Year-to-Date Precipitation Summary

*Based on Provisional SNOTEL data as of Sep 14, 2017*

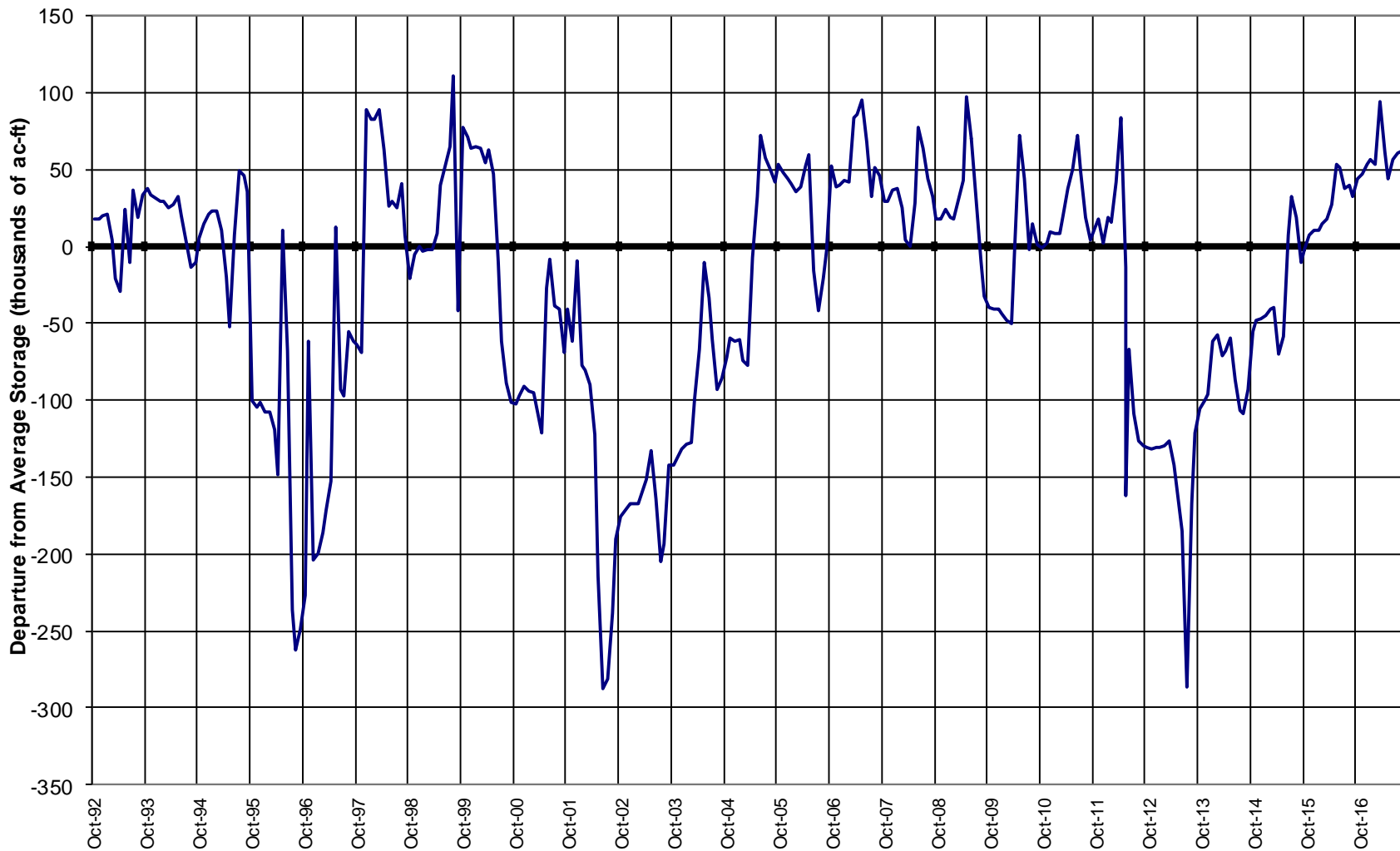


## Reservoir Storage



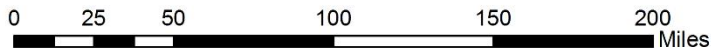
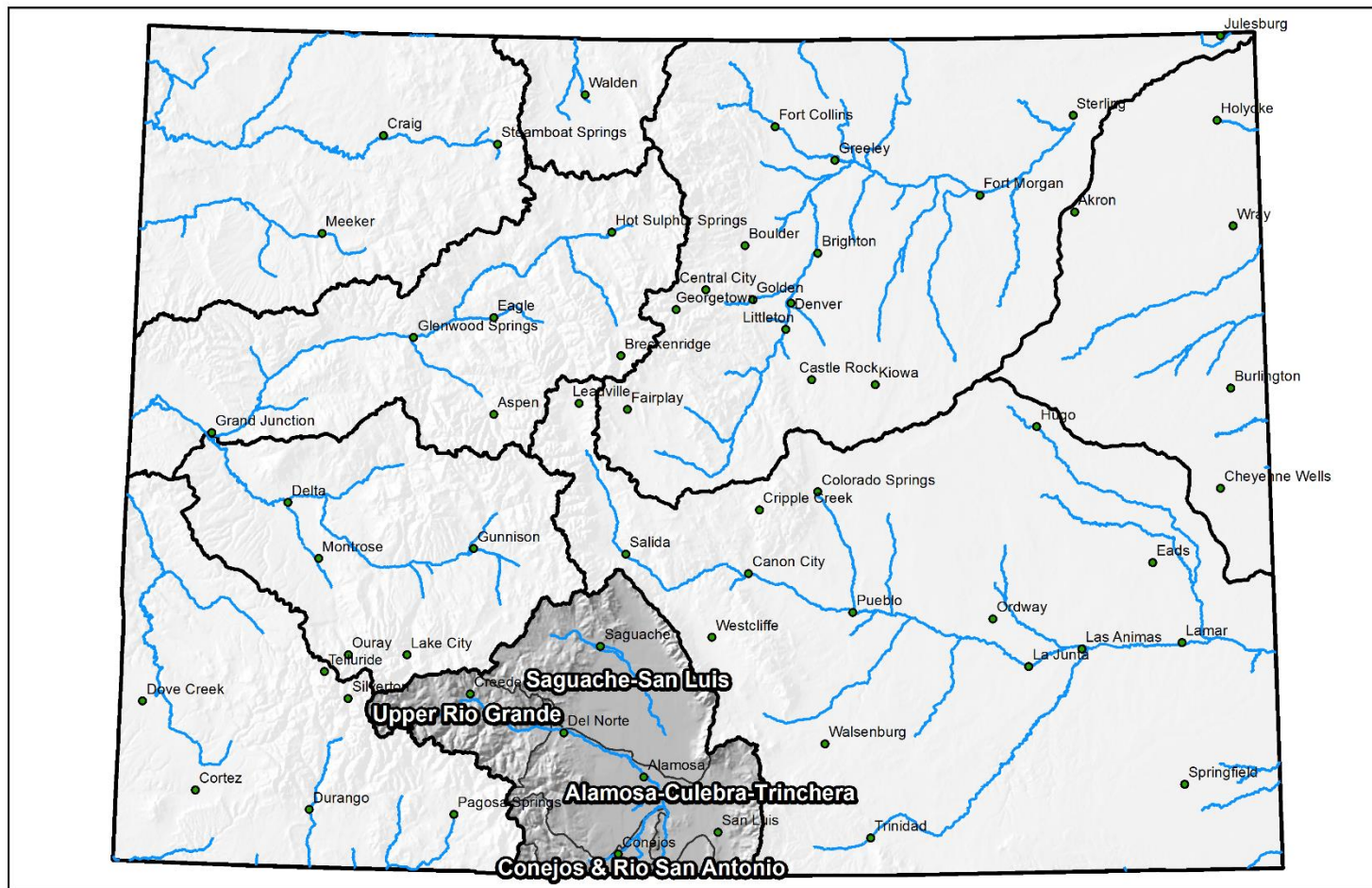
## SAN MIGUEL, DOLORES, ANIMAS AND SAN JUAN RIVER BASINS

Reservoir Storage  
Departure from Average



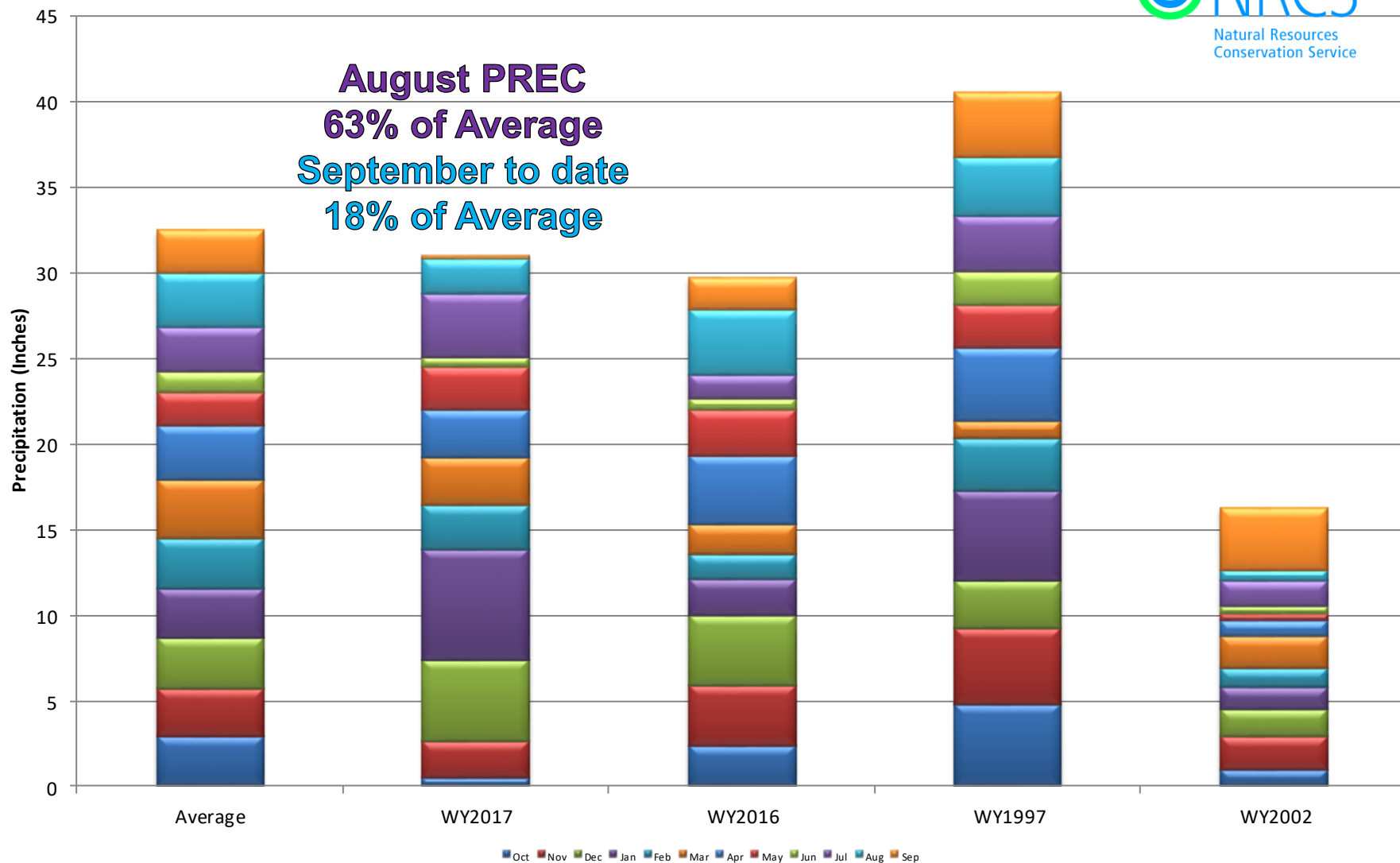
## Major Basin Summary

### Upper Rio Grande River Basin



## Upper Rio Grande Basin High/Low Monthly Precipitation Summary

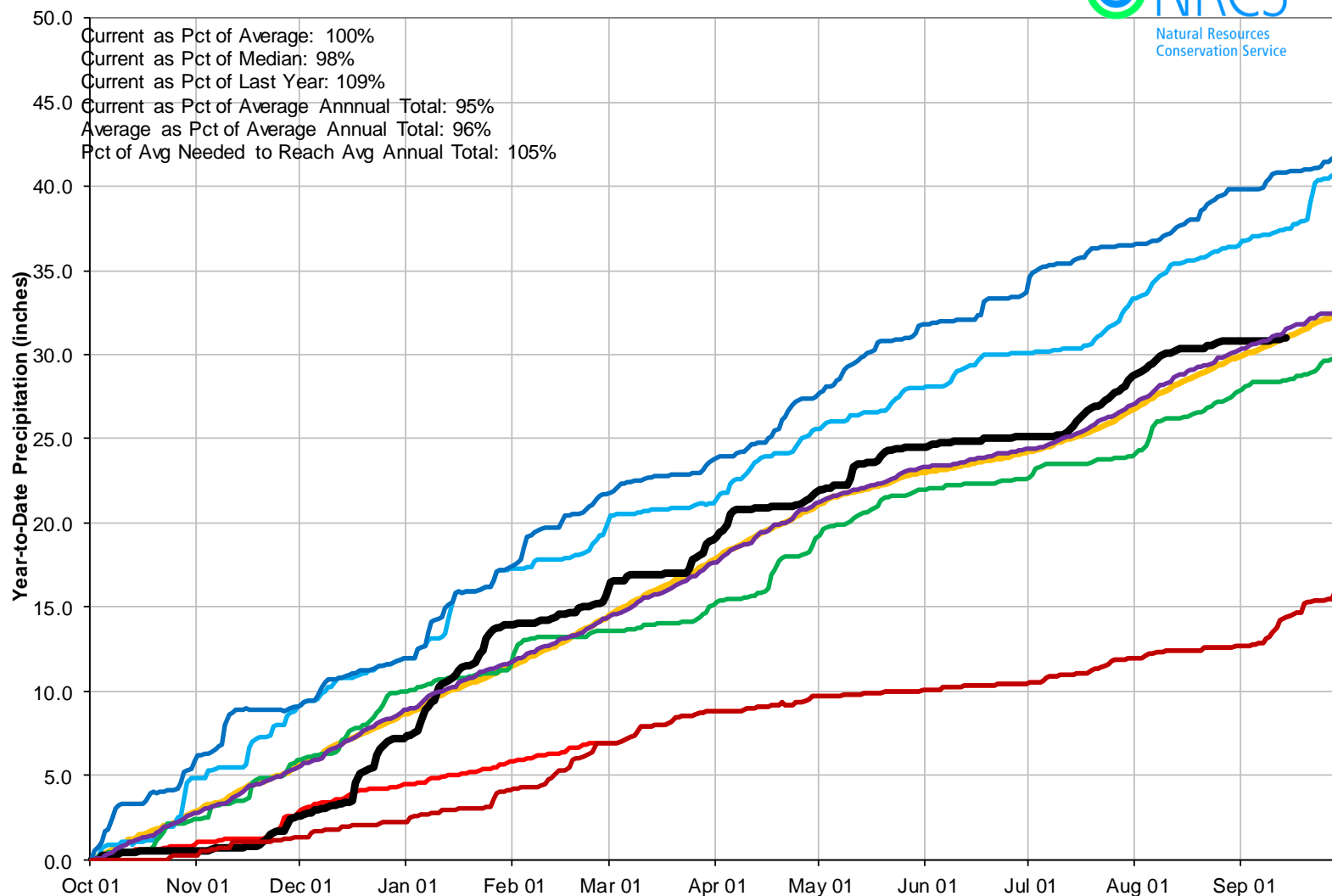
*Based on Provisional SNOTEL data as of Sep 14, 2017*



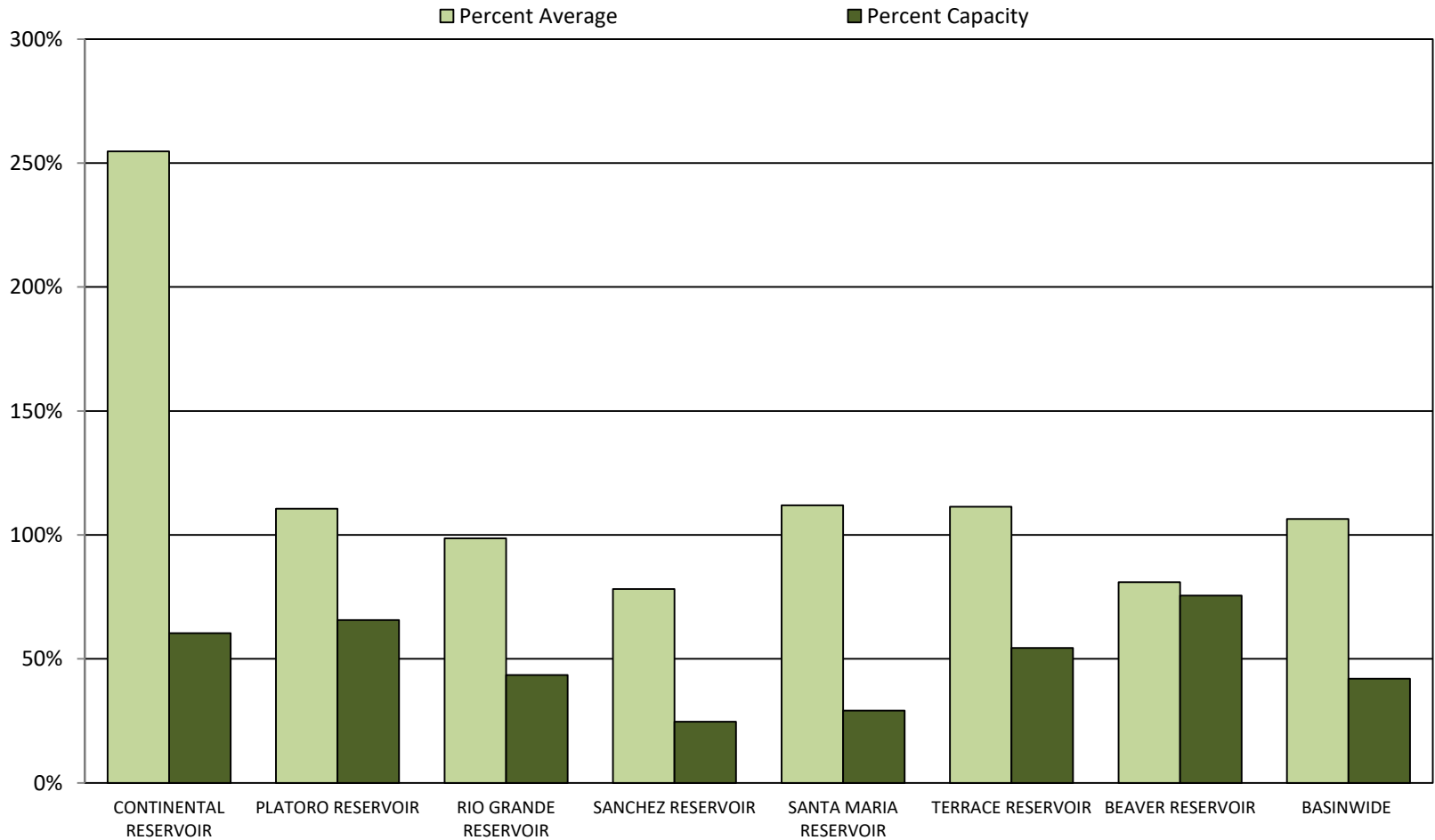


## Upper Rio Grande Basin High/Low Year-to-Date Precipitation Summary

*Based on Provisional SNOTEL data as of Sep 14, 2017*

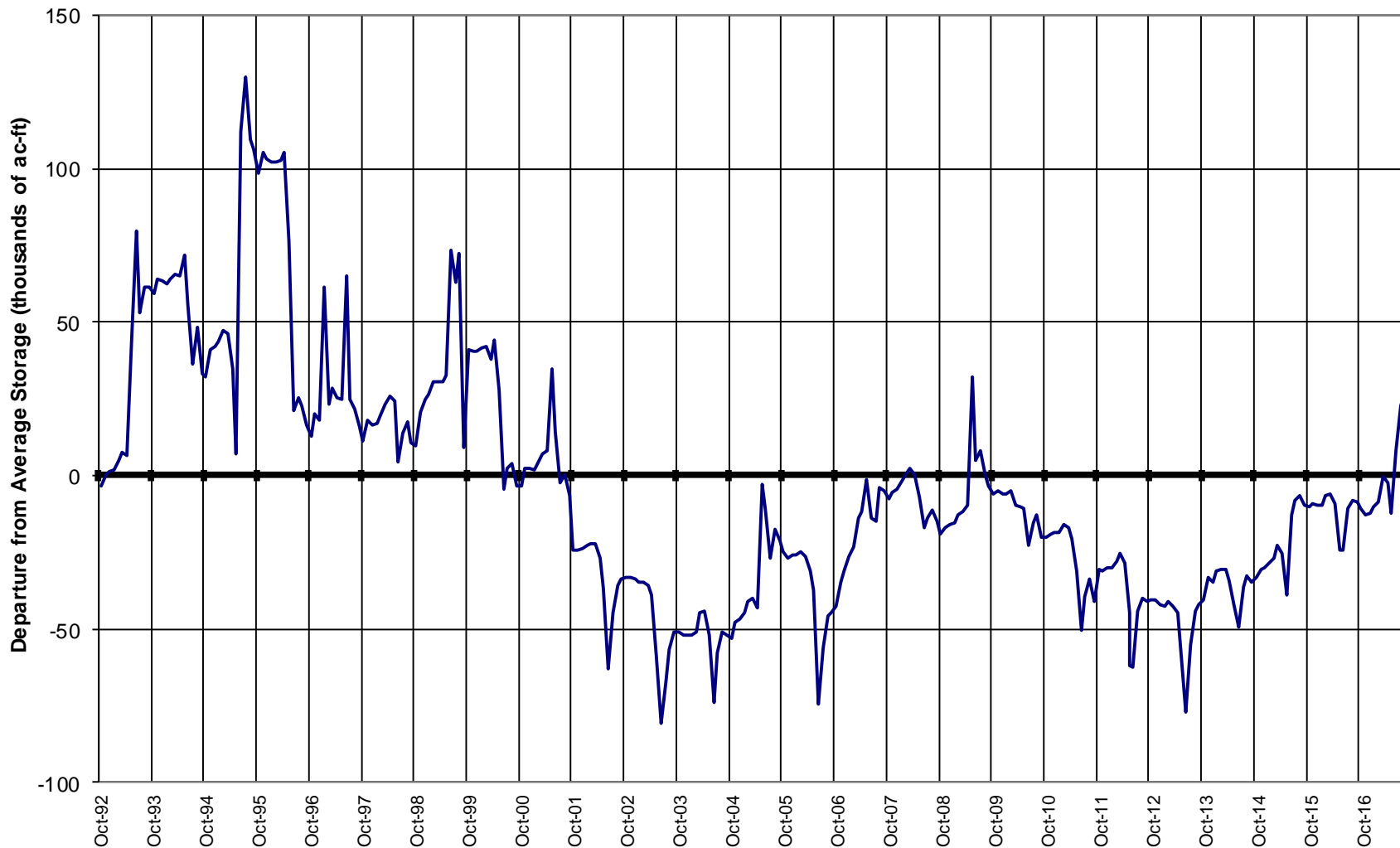


## Reservoir Storage





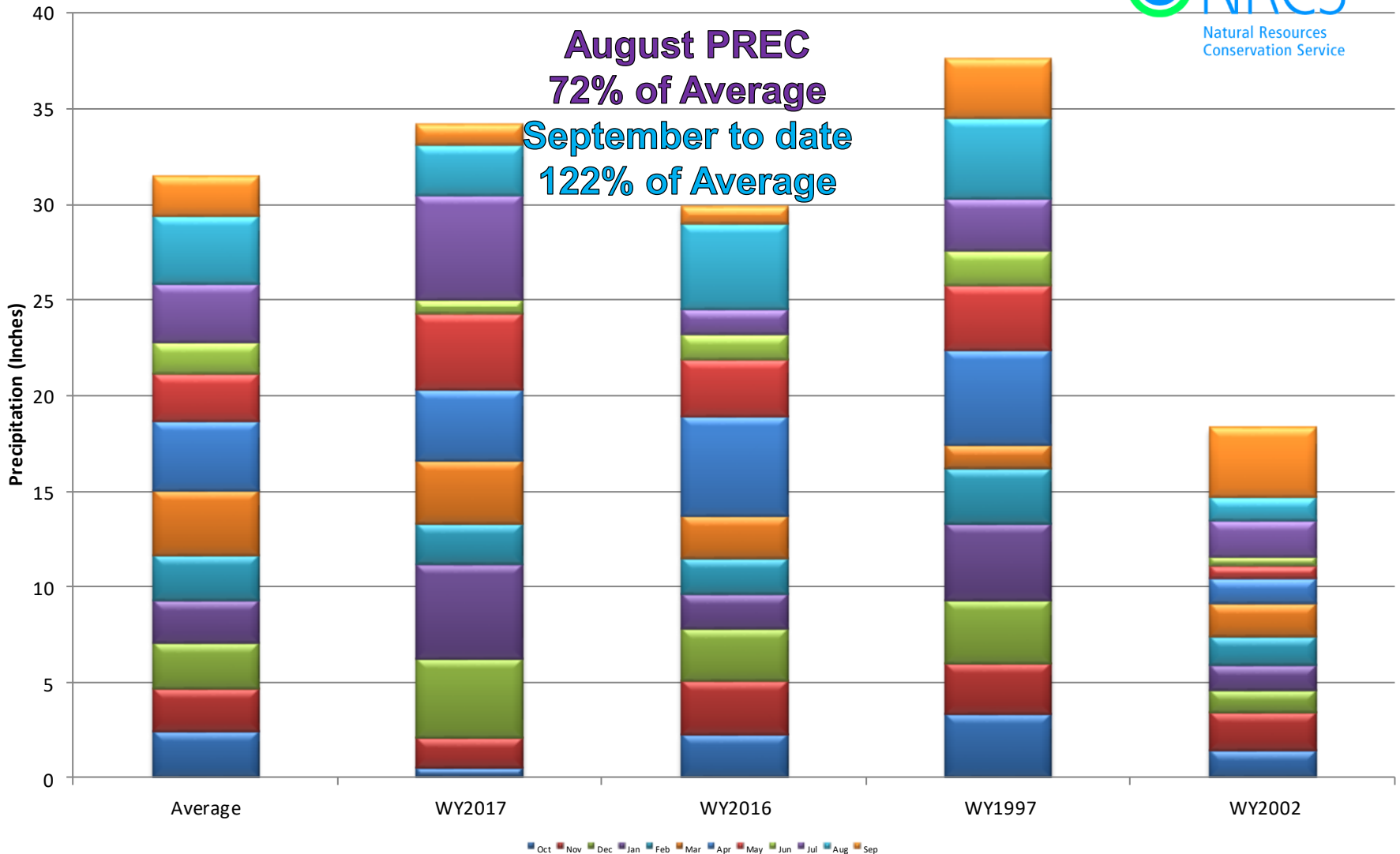
## UPPER RIO GRANDE BASIN Reservoir Storage Departure from Average



[illegible]

## Arkansas River Basin High/Low Monthly Precipitation Summary

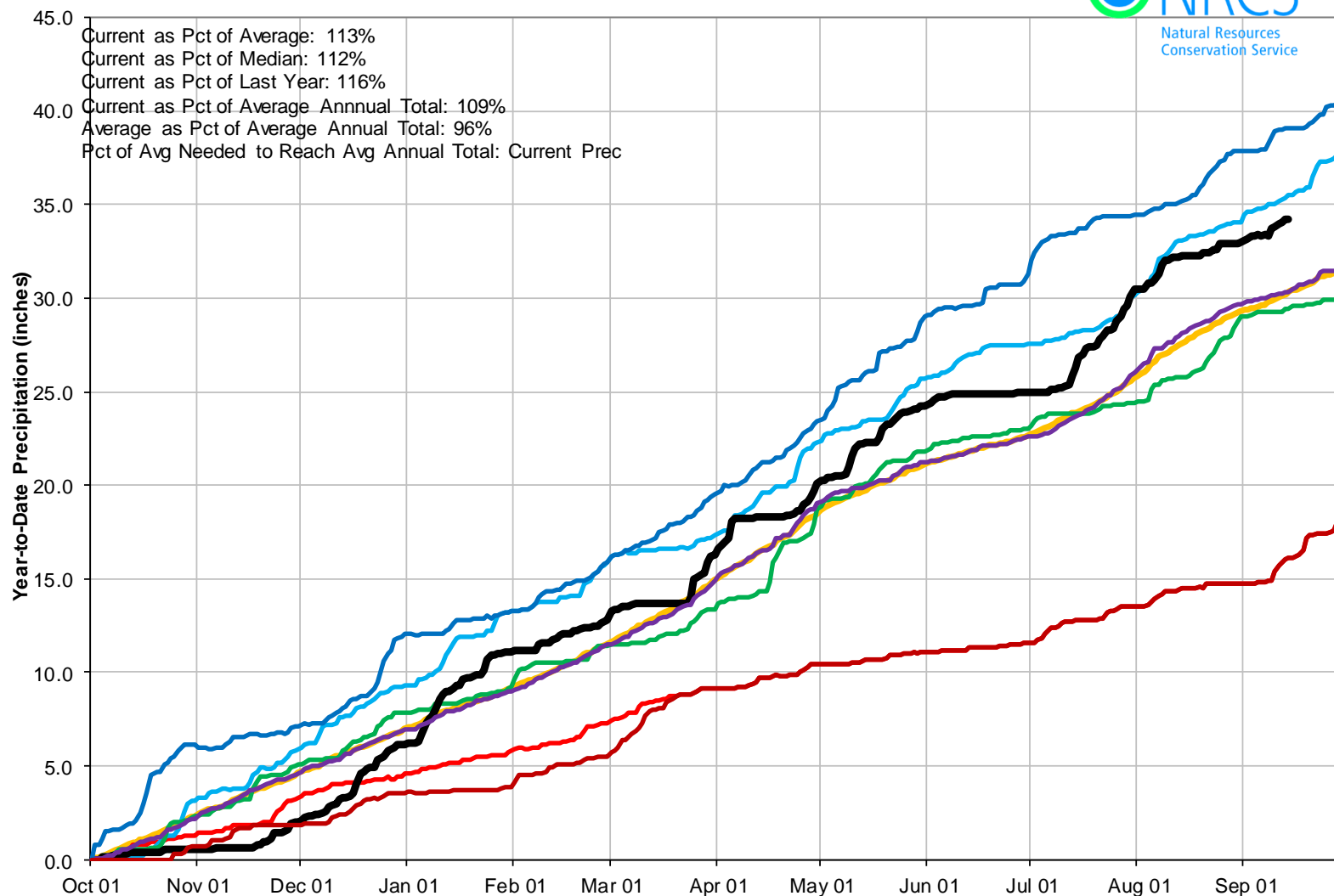
*Based on Provisional SNOTEL data as of Sep 14, 2017*



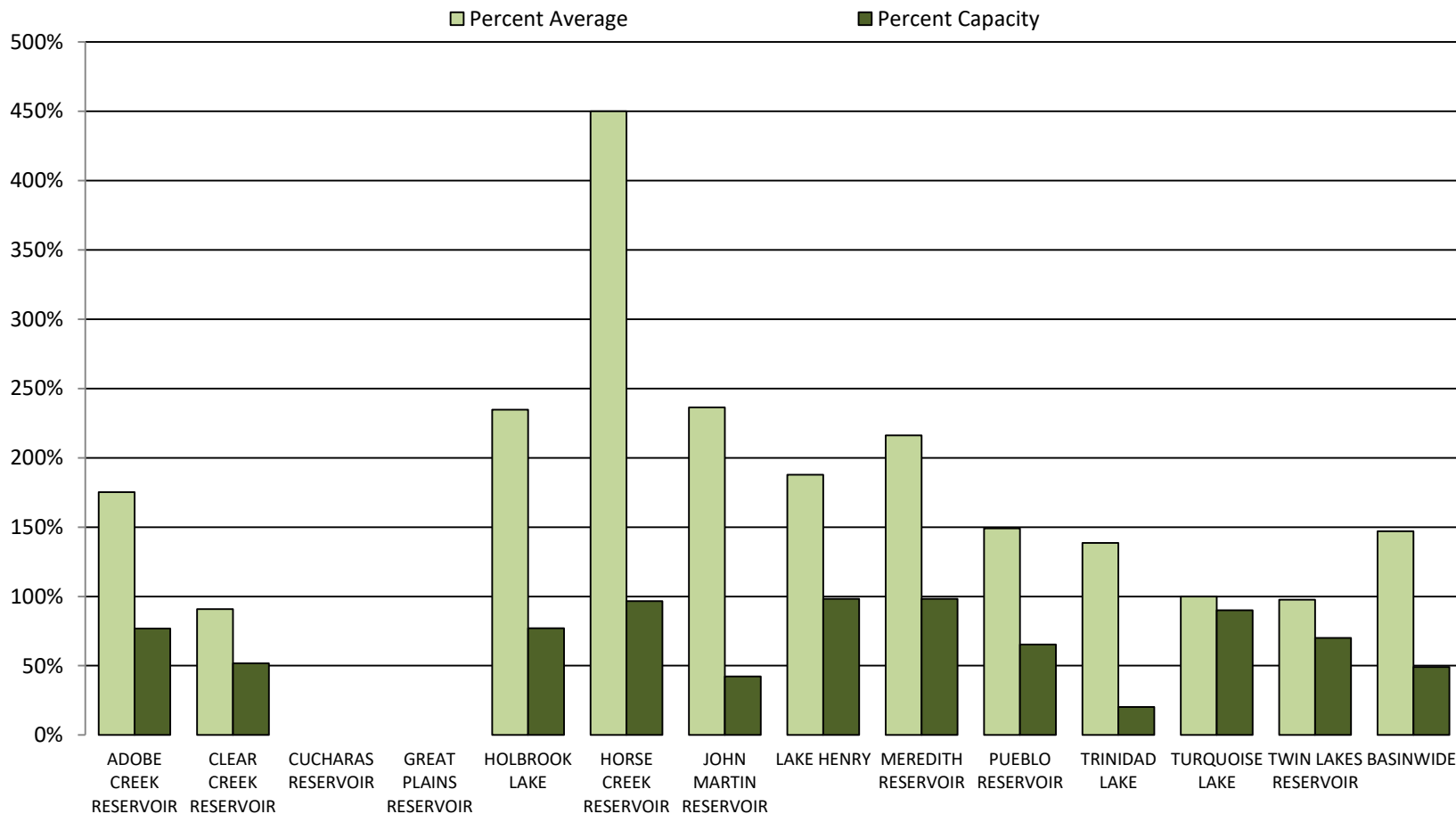


## Arkansas River Basin High/Low Year-to-Date Precipitation Summary

*Based on Provisional SNOTEL data as of Sep 14, 2017*



## Reservoir Storage

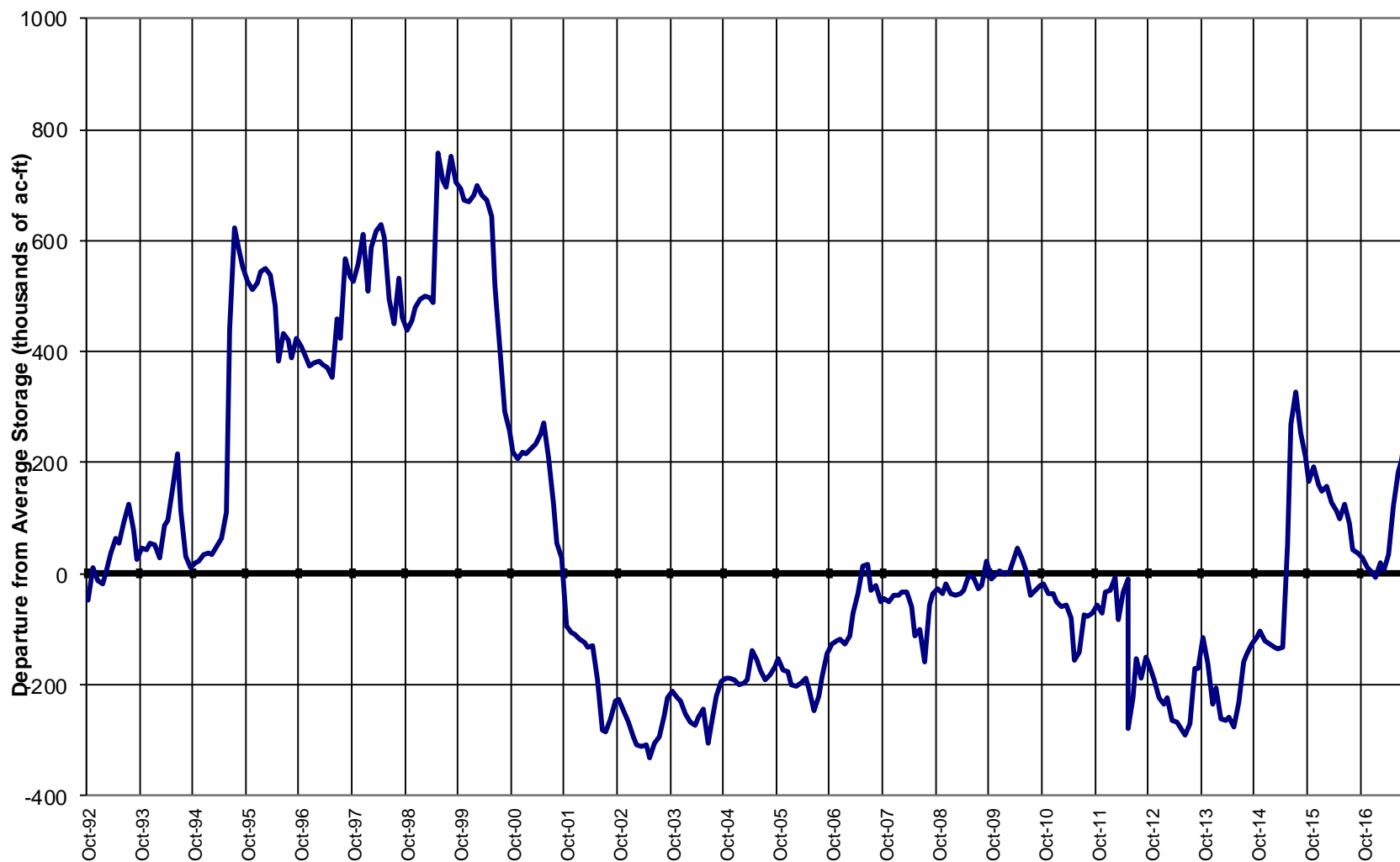




## ARKANSAS RIVER BASIN

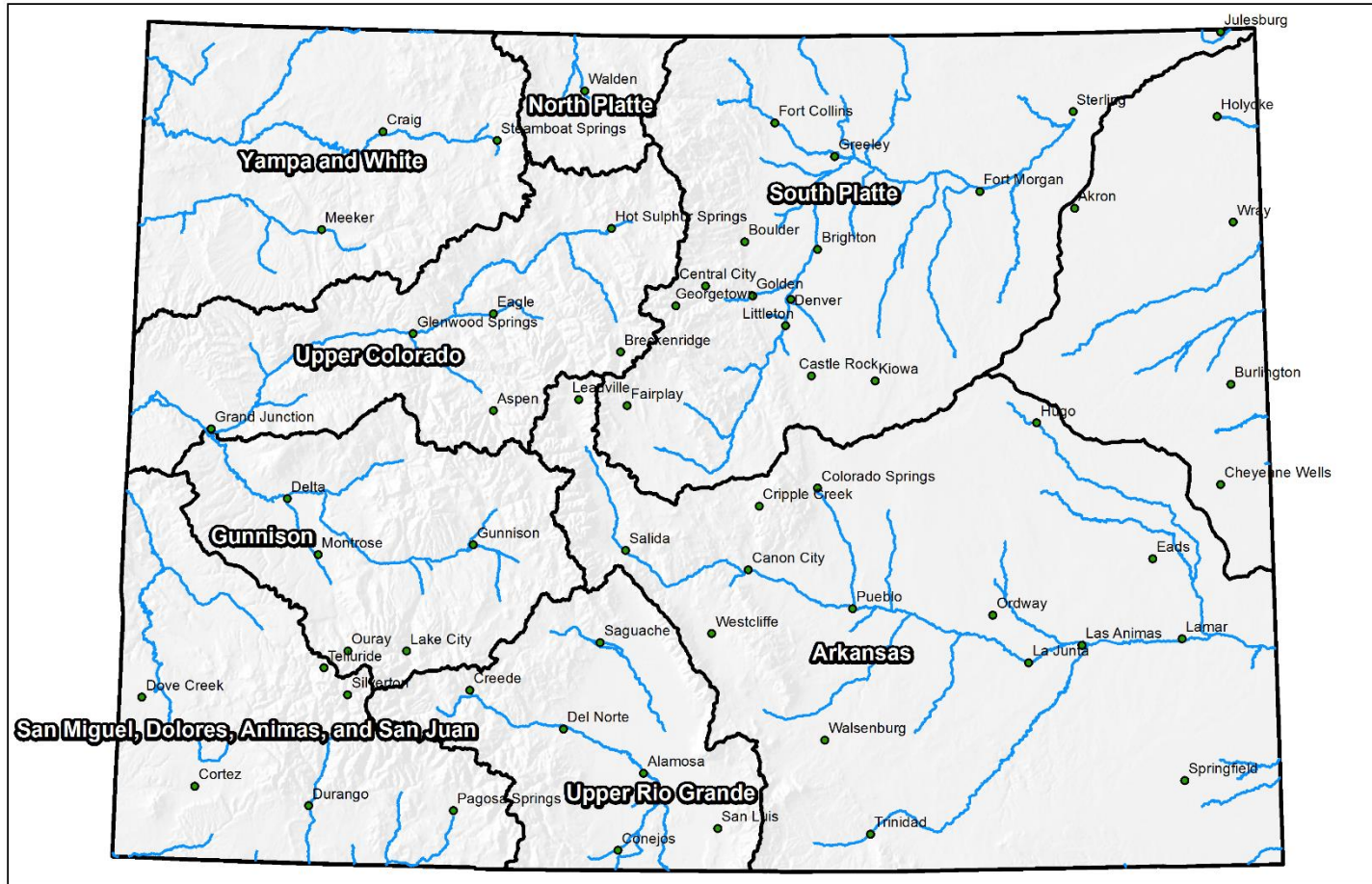
### Reservoir Storage

### Departure from Average



## Colorado Statewide Summary

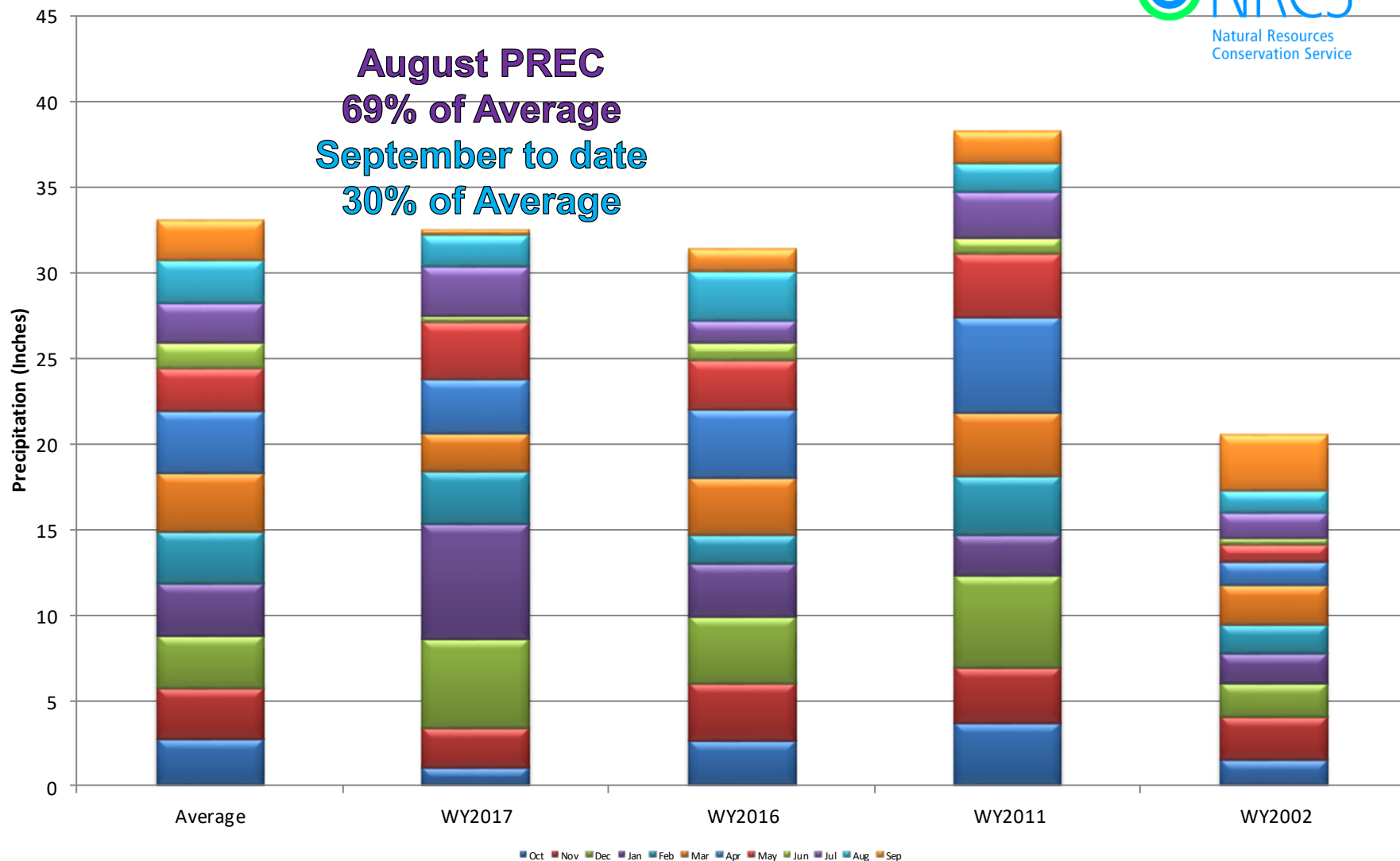
Colorado Major Basins



0 25 50 100 150 200 Miles

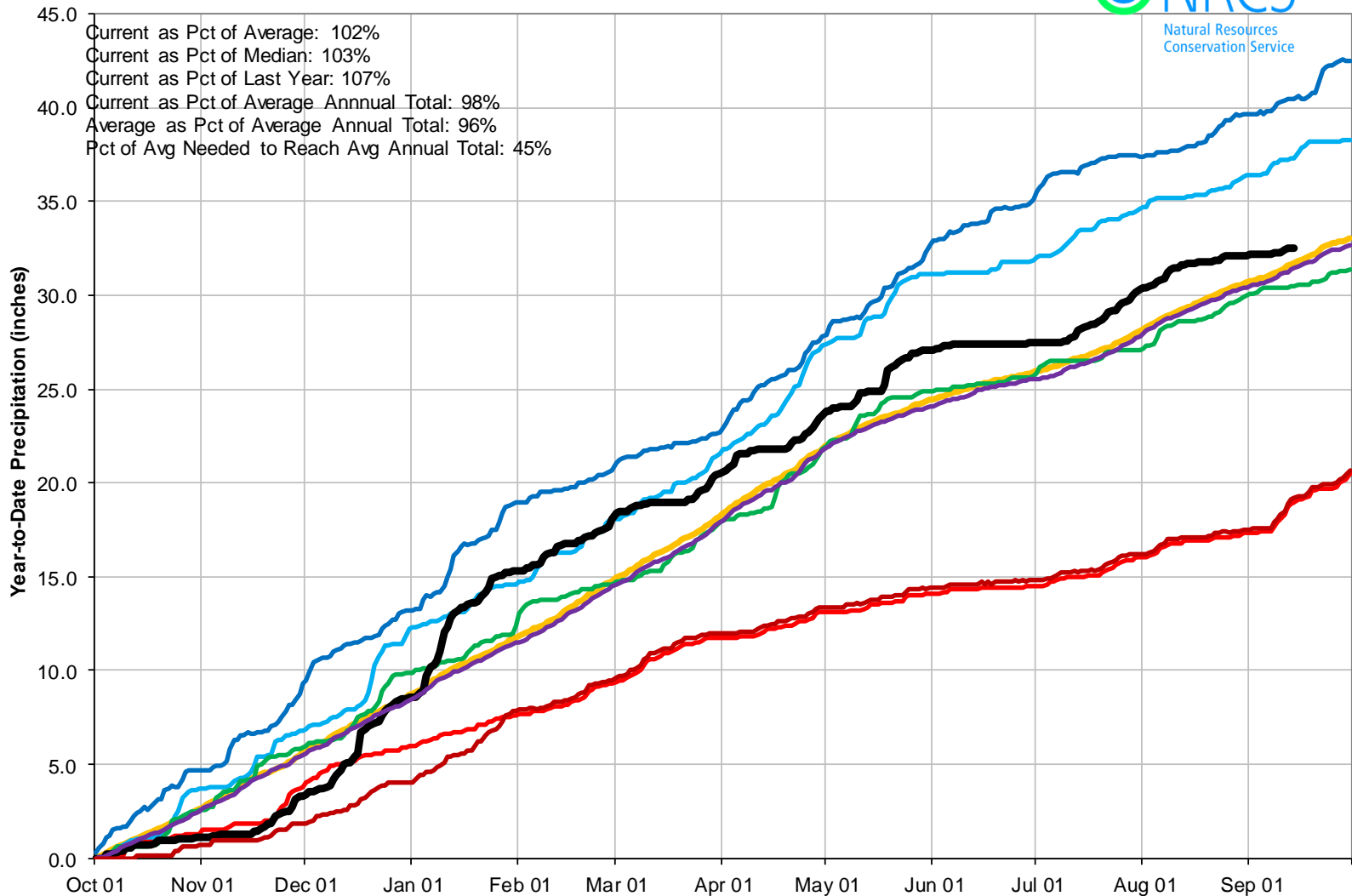
## Colorado Statewide High/Low Monthly Precipitation Summary

*Based on Provisional SNOTEL data as of Sep 14, 2017*



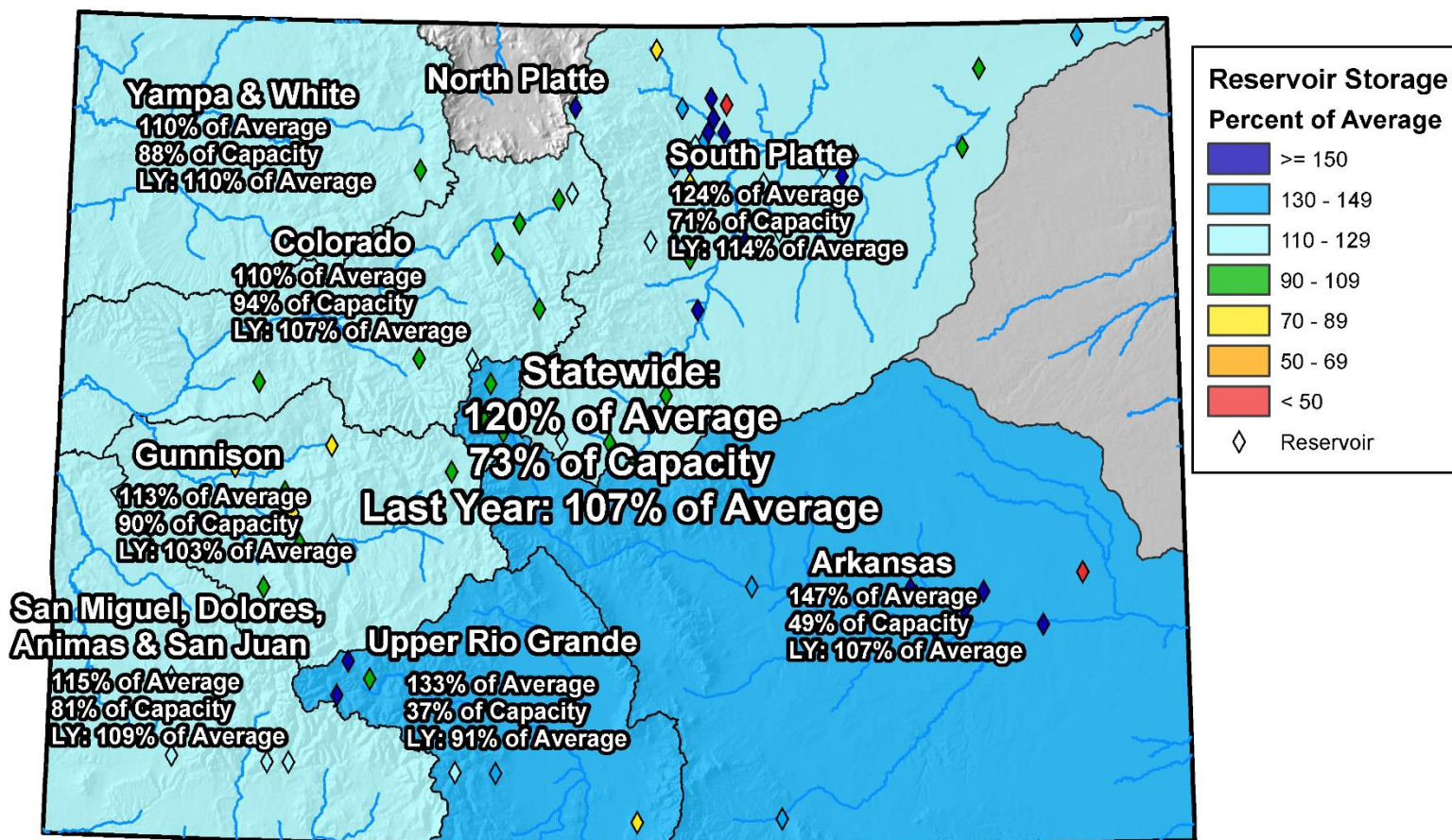
## Colorado Statewide High/Low Year-to-Date Precipitation Summary

*Based on Provisional SNOTEL data as of Sep 14, 2017*



## Colorado Monthly Reservoir Storage Summary

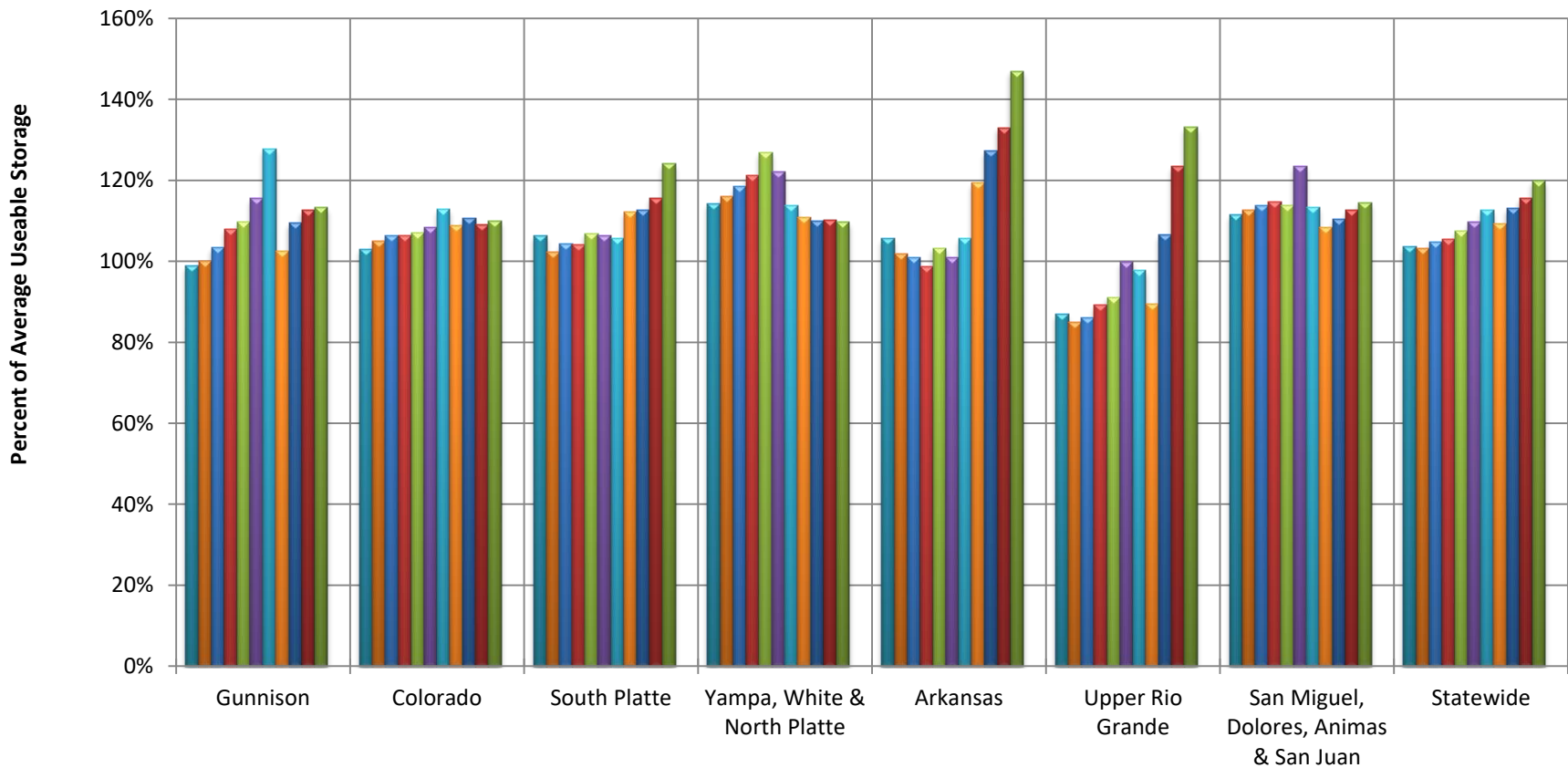
End of August 2017



0 25 50 100 150 200 Miles

## Colorado Reservoir Storage

Oct-16   Nov-16   Dec-16   Jan-17   Feb-17   Mar-17  
 Apr-17   May-17   Jun-17   Jul-17   Aug-17   Sep-17



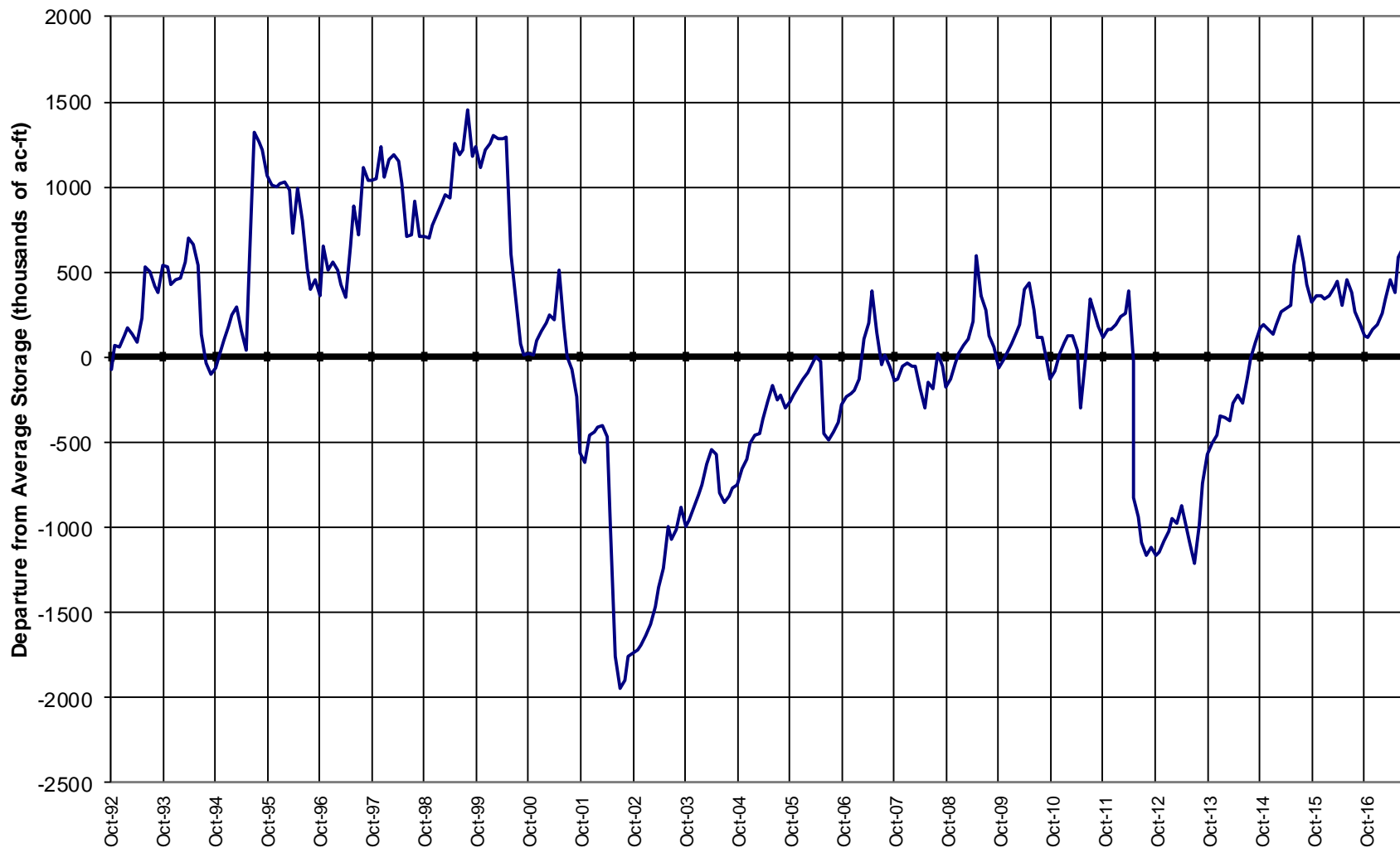


# Colorado Snow Surveys

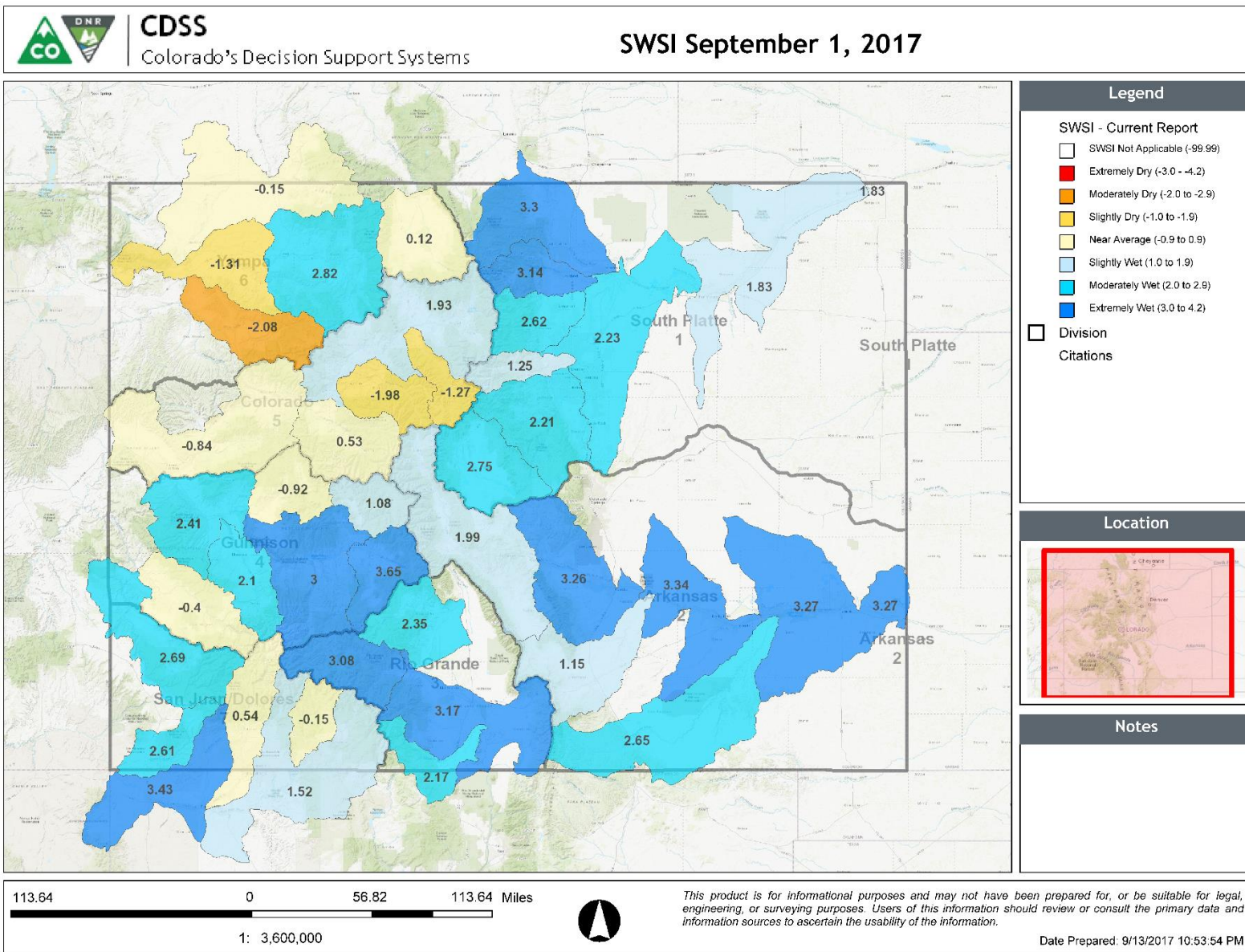
Basin	Year-to-Date Precip as % of Avg	August Precip as % of Avg	September Month to Date Precip as % of Avg
Gunnison	102	74	22
Upper Colorado	101	80	44
South Platte	109	100	33
Yampa & White	96	73	0
Arkansas	112	72	122
Upper Rio Grande	100	63	18
SMDASJ	100	57	7
Statewide	103	69	30



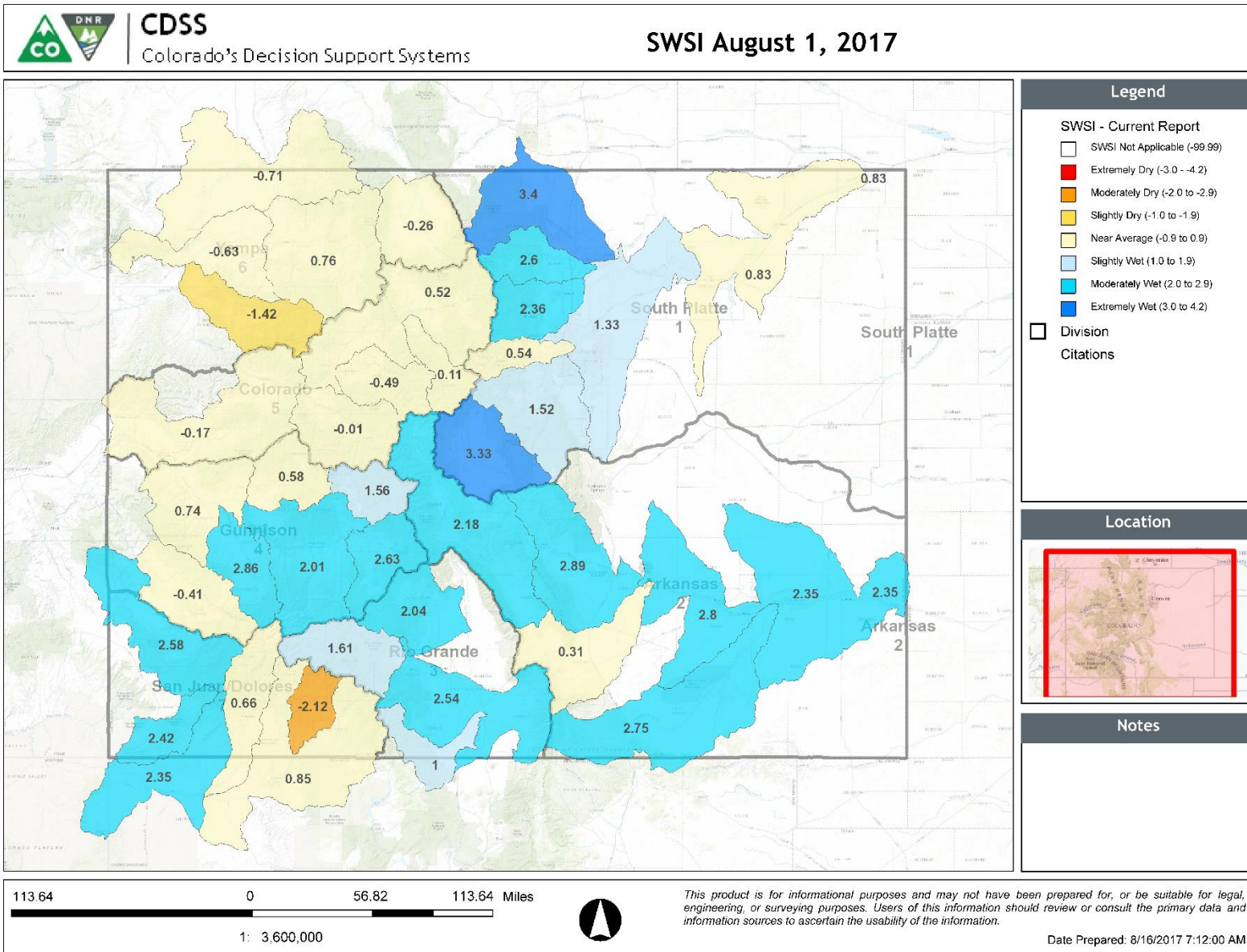
## COLORADO STATEWIDE Reservoir Storage Departure from Average



September 1, 2017 SWSI



August 1, 2017 SWSI



## Summary

- August Precip below normal
- September to date Precipitation well below normal
- Water year precipitations remains at very near to above normal amounts across the state
- Statewide reservoir storage continued to rise, relative to normal, between August 1<sup>st</sup> and September 1<sup>st</sup> from 116 to 120% of average



United States Department of Agriculture

Colorado Snow Surveys

# Water Availability Task Force Meeting

## September 14<sup>th</sup>, 2017

### NRCS Snow Survey and Water Supply Forecasting Program

Brian Domonkos  
Snow Survey Supervisor  
720-544-2852

<http://www.nrcs.usda.gov/wps/portal/nrcs/main/co/snow/>