



PRRIP – ED OFFICE MEMORANDUM

TO: GOVERNANCE COMMITTEE
FROM: EXECUTIVE DIRECTOR'S OFFICE
SUBJECT: TRACT 1505 EVALUATION SUMMARY AND RECOMMENDATION
DATE: FEBRUARY 29, 2016

REQUESTED GOVERNANCE COMMITTEE ACTION

The Land Advisory Committee (LAC) requests that the Governance Committee (GC) cease pursuit of tract 1505.

LAC RECOMMENDATION

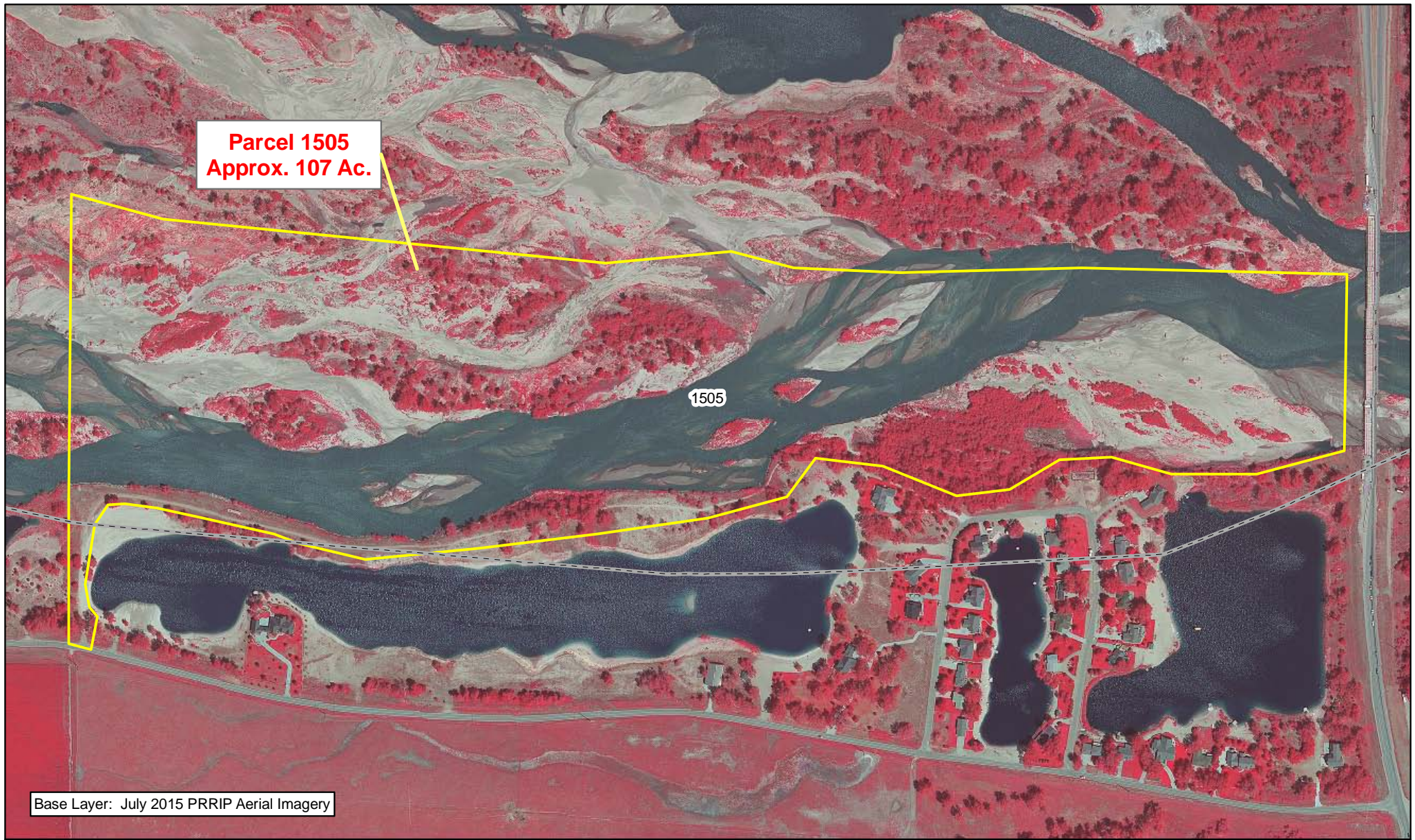
On February 23, 2016 the LAC voted unanimously to recommend that the Governance Committee cease pursuit of tract 1505.

TRACT DESCRIPTION



Tract 1505 is approximately 107 acres in size and is located in Section 14, T-8N, R-16W (Figure A-1). The tract is located in the Odessa to Kearney bridge segment (Figure A-2).

HABITAT CONSIDERATIONS

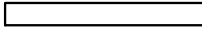
Tract 1505 was considered by the LAC as complex habitat. This tract is entirely river channel acres, with no buffer. Primary restoration activities would be tree clearing, island clearing/building, and possibly channel widening. Due to disturbance concerns from a nearby housing development and the Highway 44 bridge which forms the east boundary, it would be recommended that restoration activities occur at least 0.5 miles from the east boundary. Additionally, there are two landowners between this tract and tracts currently owned by PRRIP in the Odessa to Kearney reach. Conversations to this point have given no confidence that they could be acquired in the near future to link tract 1505 to the Pawnee Complex. Due to the concerns with disturbances, the disconnect from the existing Pawnee Complex, and the current status of the complex habitat milestone objective, the LAC recommends that the GC vote to cease pursuit of this tract.



Legend

-  1505
-  County

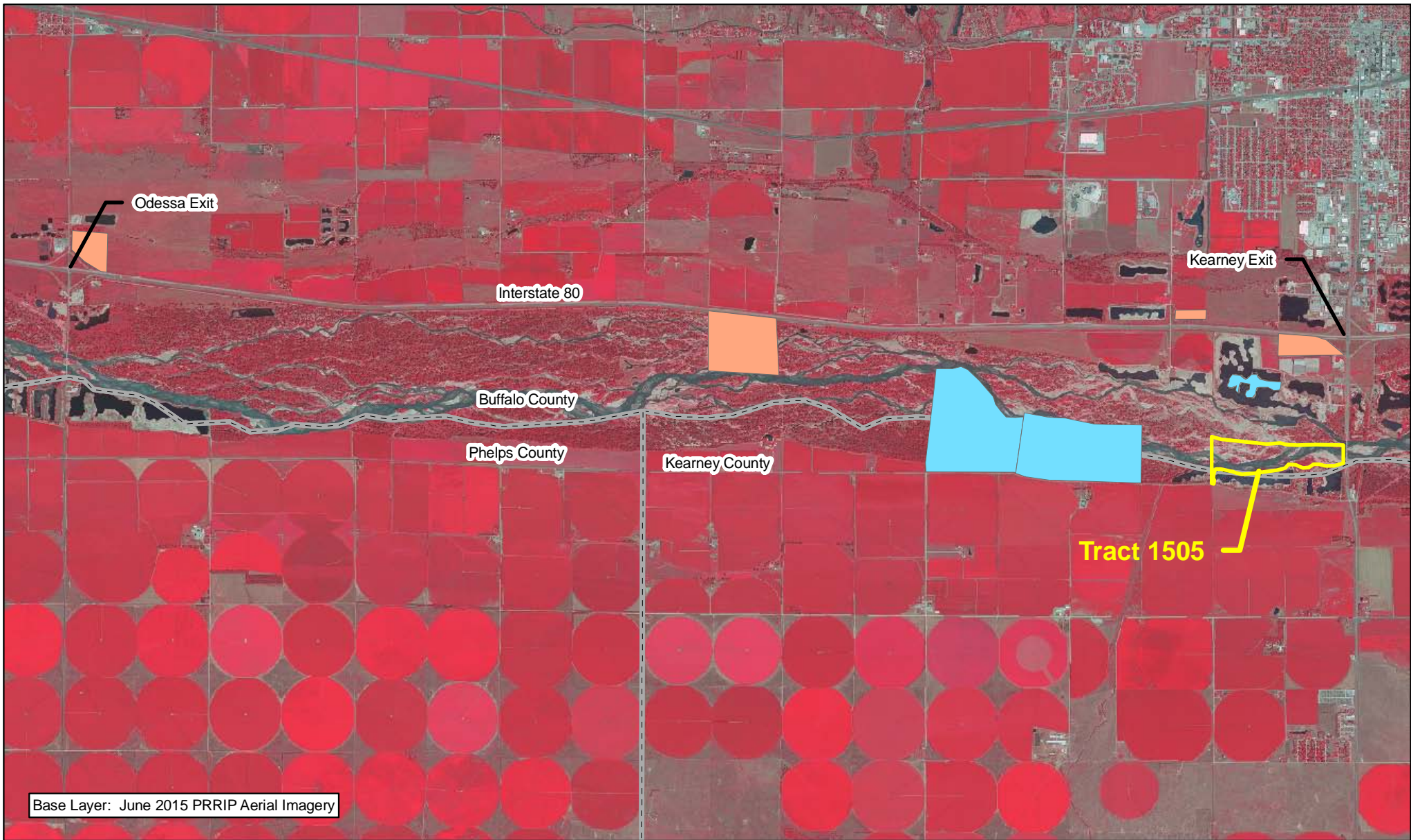


 Miles
0.1

**TRACT 1505
BOUNDARY MAP**

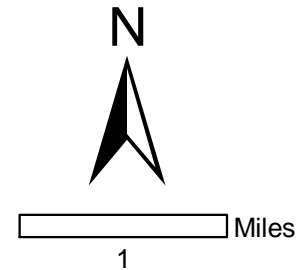
Parcel Evaluation
Date: 11/09/15
By: JDB

Figure A-1



Legend

1505	Audubon	PRRIP
County	CNPPID	PRWCT
	Ducks Unlimited	TNC
	NGPC	USFWS
	NPPD	



TRACT 1505 LOCATION MAP

Parcel Evaluation
Date: 11/09/15
By: JDB

Figure A-2