



PRRIP – ED OFFICE MEMORANDUM

TO: GOVERNANCE COMMITTEE
FROM: EXECUTIVE DIRECTOR'S OFFICE
SUBJECT: TRACT 1608 EVALUATION SUMMARY AND RECOMMENDATION
DATE: FEBRUARY 27, 2017

REQUESTED GOVERNANCE COMMITTEE ACTION

The Land Advisory Committee (LAC) requests that the Governance Committee (GC) cease pursuit of tract 1608.

LAC RECOMMENDATION

On February 14, 2017, the LAC voted unanimously to recommend that the Governance Committee cease pursuit of tract 1608.

TRACT DESCRIPTION

Tract 1608 is approximately 495 acres in size and is located in sections 10 & 15, T-10N, R-9W (Figure A-1). The tract is located in the Grand Island to Highway 34 bridge segment (Figure A-2).

HABITAT CONSIDERATIONS

Tract 1608 was considered by the LAC as complex wet meadow habitat for whooping cranes. This tract is owned by the City of Grand Island and contains the city's well field. This tract would likely be acquired as a management agreement. There are minimal restoration needs on this tract. The primary activities would be clearing of some cedar growth in old fence lines, and some clearing of larger trees. The Program could also mark a power line that crosses the tract with bird flight diverters. With a management agreement, the Program could also provide input on hay/grazing timing and frequency, however overall control on this tract is expected to be quite low since the well field is the primary objective for the city. As discussed at the LAC, the evaluation team and the LAC felt that this tract is better suited for a collaboration between the City and a private lands conservation program such as USFWS Partners for Fish & Wildlife, Ducks Unlimited, Nebraska Game & Parks, NRCS, etc. Management by PRRIP for target species is expected to be fairly limited by City priorities, and the tract would be a large commitment from the Program's acreage goals. For these reasons, the LAC recommends that the GC vote to cease pursuit of this tract.

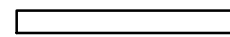
Parcel 1608
Approx. 495 Ac.

Base Layer: June 2016 PRRIP Aerial Imagery

Legend

 1606

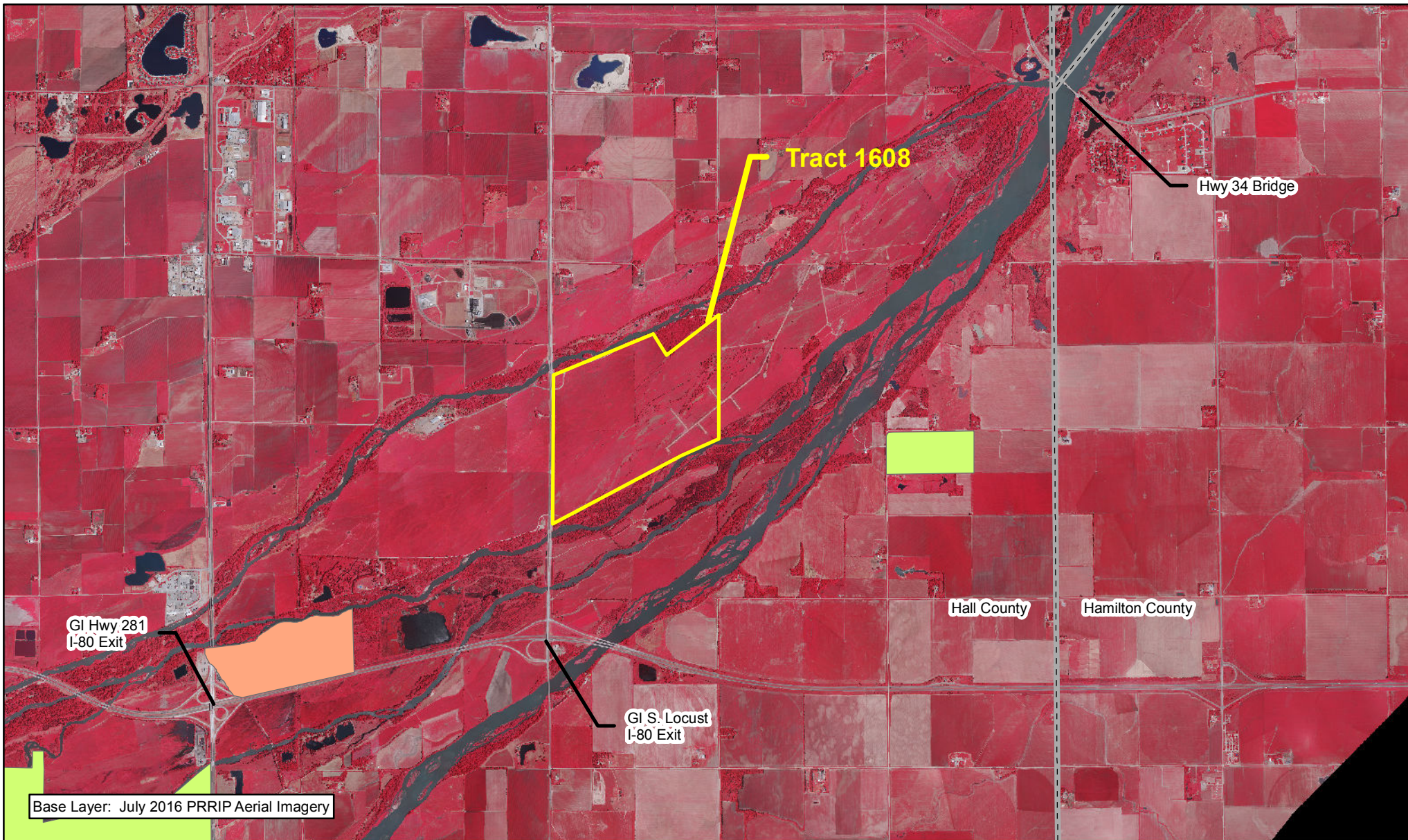


 Miles
0.25

TRACT 1608
BOUNDARY MAP

Parcel Evaluation
Date: 11/14/16
By: JDB

Figure A-1



Legend

1608	Audubon	PRRIP
County	CNPPID	PRWCT
Ducks Unlimited	TNC	USFWS
NGPC		
NPPD		



Miles
1

TRACT 1608 LOCATION MAP

Parcel Evaluation
Date: 11/14/16
By: JDB

Figure A-2