



PRRIP – ED OFFICE MEMORANDUM

TO: GOVERNANCE COMMITTEE
FROM: EXECUTIVE DIRECTOR'S OFFICE
SUBJECT: TRACT 1607 EVALUATION SUMMARY AND RECOMMENDATION
DATE: FEBRUARY 27, 2017

REQUESTED GOVERNANCE COMMITTEE ACTION

The Land Advisory Committee (LAC) requests that the Governance Committee (GC) cease pursuit of tract 1607.

LAC RECOMMENDATION

On February 14, 2017, the LAC voted unanimously to recommend that the Governance Committee cease pursuit of tract 1607.

TRACT DESCRIPTION

Tract 1607 is approximately 30 acres in size and is located in section 26, T-9N, R-13W (Figure A-1). The tract is located in the Gibbon to Shelton bridge segment (Figure A-2).

HABITAT CONSIDERATIONS

Tract 1607 was considered by the LAC as non-complex off channel sand and water nesting habitat for least terns and piping plovers. This tract would be excavated to create OCSW habitat similar to tract 2011001. There is a high pressure 6" natural gas distribution pipeline passing through the center of this tract. This alone is likely to make habitat creation difficult or impossible. Additionally, there were several old wells, pipes, and construction debris at various locations on the property. While buffers are not typically a concern for OCSW habitat locations, this tract is bounded on the south and west by the Union Pacific Railroad tracks, and on the east by a state highway link, with a regularly travelled railroad crossing which would subject the site to frequent horn and railway noise. For these reasons, in addition to the very high initial asking price, the LAC recommends that the GC vote to cease pursuit of this tract.




Base Layer: June 2016 PRRIP Aerial Imagery



Legend

 1607

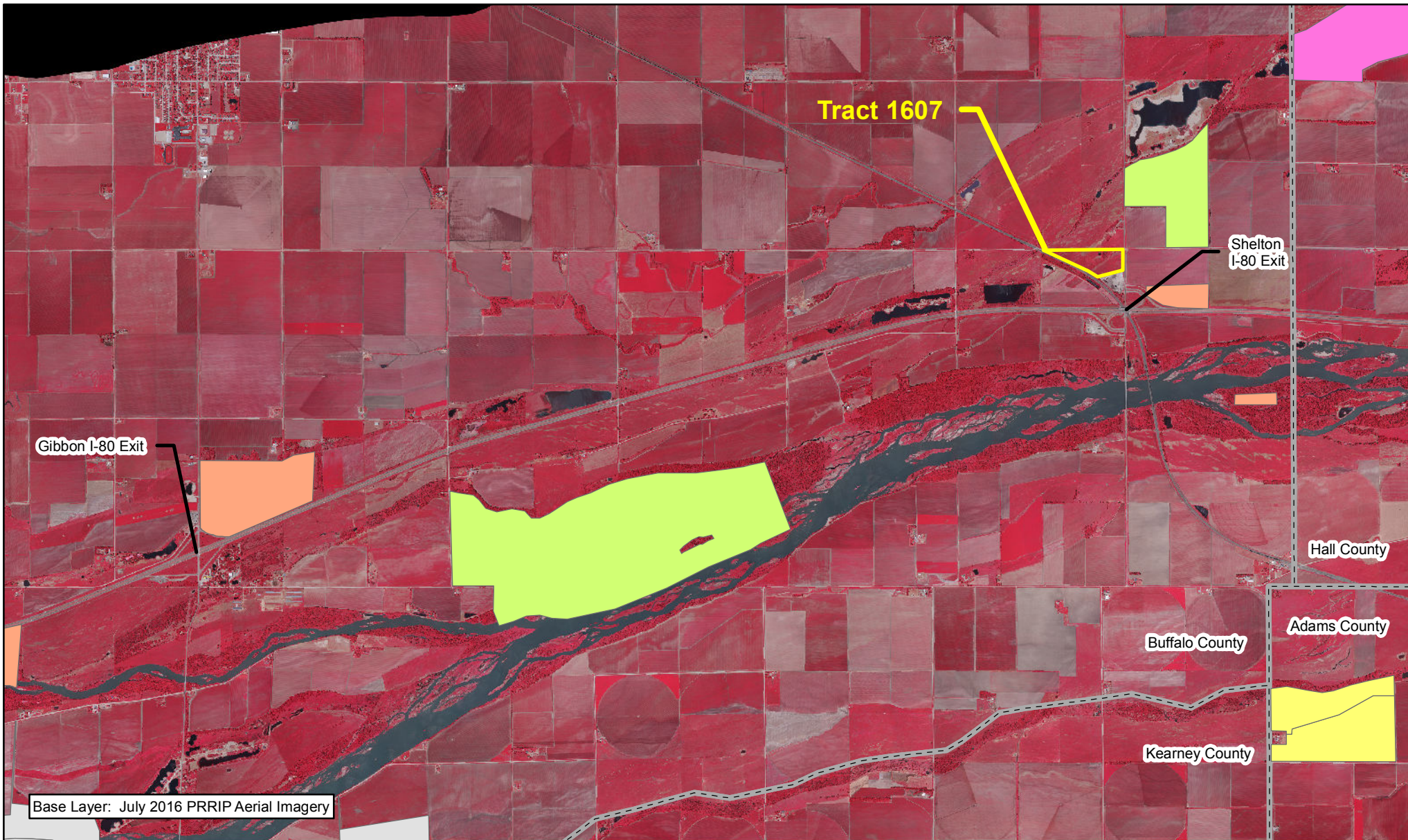


 0.1 Miles

**TRACT 1607
BOUNDARY MAP**

Parcel Evaluation
Date: 11/14/16
By: JDB

Figure A-1



Legend

1607	Audubon	PRRIP
County	CNPPID	PRWCT
	Ducks Unlimited	TNC
	NGPC	USFWS
	NPPD	



Miles
1

TRACT 1607 LOCATION MAP

Parcel Evaluation
Date: 11/14/16
By: JDB

Figure A-2