

## 2016 Land Budget and Expenditure Review

### Platte River Recovery Implementation Program

For More Information Contact: Jerry F. Kenny, [kennyj@headwaterscorp.com](mailto:kennyj@headwaterscorp.com), (308) 237-5728

#### *2016 Land Budget Overview By Budget Line Item*

Budget Line Item	Description	Estimated Expenditure	Actual Expenditure
LP-2	Adaptive Management Species Habitat Actions	\$815,366	\$351,215
LP-3	New Land Acquisitions	\$500,000	\$247,888
LP-4	Property Maintenance & Agricultural Operations	\$346,125	\$273,051
LP-6	Land Plan Special Advisors	\$20,000	\$15,975
LP-7	Public Access Management	\$50,000	\$53,437
PD-22	Sediment Augmentation Management Experiment	\$250,000	\$0
	<b>TOTAL</b>	<b>\$1,981,491</b>	<b>\$941,566</b>

## 2016 Budget Overview By Complex

Complex	Estimated Expenditure	Actual Expenditure	Estimated Income	Actual Income
Non-Complex Tracts	\$126,000	\$144,768	\$38,600	\$41,015
Plum Creek "Complex"	\$305,800	\$17,382	\$9,750	\$9,499
Cottonwood Ranch Complex	\$109,091	\$63,731	\$25,000	\$23,846
Elm Creek Complex	\$165,840	\$131,579	\$17,950	\$14,433
Pawnee Complex	\$256,000	\$130,240	\$720	\$720
Fort Kearny Complex	\$200,320	\$93,504	\$53,200	\$76,670
Minden-Gibbon Complex	\$29,000	\$0	\$0	\$0
Shoemaker Island Complex	\$119,400	\$43,062	\$38,000	\$38,458
<b>TOTAL</b>	<b>\$1,311,451</b>	<b>\$624,266</b>	<b>\$183,220</b>	<b>\$204,641</b>

## **2016 Budget Priority Areas by Budget Line Item**

**LP-2 – Adaptive Management Species Habitat Actions:** Species habitat priorities for 2016 were focused on maintenance of complex and non-complex habitat as well as enhancement of off-channel palustrine wetland habitat for whooping cranes at newly acquired palustrine wetland sites.

**LP-3 – New Land Acquisitions:** The majority of complex and non-complex sandpit habitat lands have been acquired. As such, 2016 priorities included acquisition of lands for non-complex palustrine wetlands as well as acquisition of remaining complex habitat acres in a bridge segment that currently does not have a habitat complex. No non-complex tracts were acquired. Additional land rights were acquired associated with the Pawnee Complex.

**LP-4 – Property Maintenance & Agricultural Operations:** 2016 priorities included maintenance of basic land infrastructure such as facilities, roads, and fences as well as fulfilling basic ownership obligations like noxious weed control and ROW mowing.

**LP-6 – Land Plan Special Advisors:** Priorities for special advisors included administration of agricultural leases and associated FSA obligations, crop management and marketing, and assistance in cropland conversions.

**LP-7 – Public Access Management:** Nebraska Game and Parks Commission managed public access to Program lands in 2016.

**PD-22 – Sediment Augmentation:** Sediment augmentation operations were delayed until 2017.



**PLATTE RIVER**  
RECOVERY IMPLEMENTATION PROGRAM

Page Intentionally Left Blank



# 2016 Non-Complex Properties Annual Work Plan Report

## Platte River Recovery Implementation Program

For More Information Contact: Jerry F. Kenny, [kennyj@headwaterscorp.com](mailto:kennyj@headwaterscorp.com), (308) 237-5728

### General Priorities

- \* ***Good Neighbor Policy*** - Conducted all actions in accordance with Program's good neighbor policy.

### Adaptive Management Priorities

- \* ***Riverine versus Off-Channel Whooping Crane Roosting*** - Monitored whooping crane use on Program riverine habitat and non-complex off-channel palustrine wetland habitat.
- \* ***Riverine versus Off-Channel Tern and Plover Nesting*** – Monitored tern and plover use and productivity on Program riverine habitat and nearby non-complex off-channel sand & water nesting habitat.

### Species Habitat Priorities

- \* ***Maintain Suitable Off-Channel Sand and Water Nesting Habitat*** – Applied pre-emergent herbicide on Tracts 2009008, 2010002, and 2011001 OCSW nesting habitat to prevent vegetation encroachment into nesting areas.
- \* ***Maintain Suitable Palustrine Wetland Roosting Habitat*** – Managed woody vegetation in the palustrine wetland areas of Tracts 2012004 and 2013001, maintaining suitable herbaceous vegetation height for whooping crane roosting.
- \* ***Protecting Other Species of Concern*** – Identify presence of and determine methods to protect other species of concern during implementation of land-related activities.

## Operations and Maintenance Priorities

- \* **Basic Property Maintenance Obligations and Needs** – Fulfilled basic property ownership obligations and needs including boundary fence signage, road maintenance, and noxious weed control.
- \* **Agricultural Operations** – Provided oversight of crop leases on Tracts 2009008, 2012004 and 2013001 and hay lease on Tract 2011001.
- \* **Sand and Gravel Mining Operations** – Monitored sand and gravel mining operations on Tracts 2009008 and 2011002.

*NOTE: The budget section of this work plan only contains information for work items that are specific to these tracts. As such, tract-specific research and monitoring actions are presented but system-scale actions like target species and geomorphology/vegetation monitoring are not.*

**Priority Area: General**

**Item(s): Land Interest and Tract-Level Restoration and Maintenance Planning**

No.	Management Activities	Budget Line Item	Completed	Cost (Estimated)	Actual Cost
NC 1	Coordination of Program land actions with neighboring landowners	N/A	Yes	N/A	N/A

**Priority Area: Species Habitat**

**Item(s): Maintain Suitable Off-Channel Sand & Water Habitat**

No.	Management Activities	Budget Line Item	Completed	Cost (Estimated)	Actual Cost
NC 2	Herbicide applications on OCSW peninsulas to maintain bare sand nesting habitat	LP-2	Yes	\$7,000	\$7,295
NC 3	Tract 2011002 sand & gravel mining debris cleanup	LP-2	Yes	\$20,000	\$15,564
NC 4	Predator Fence at NW OCSW area on east sandpit	LP-2	Yes	\$3,000	\$3,432

**Priority Area: *Species Habitat***

**Item(s): *Maintain Suitable Palustrine Wetland Habitat***

No.	Management Activities	Budget Line Item	Completed	Cost (Estimated)	Actual Cost
NC 5	Tract 2013001 replace west irrigation pump and install underground pipe	LP-2	Yes	\$30,000	\$17,205
NC 6	Irrigation well pumping to augment water level in wetland area of Tract 2013001	LP-2	Yes	\$5,000	\$2,338
NC 7	Palustrine wetland seeding on Tract 2013001	LP-2	Yes	\$20,000	\$22,443
NC 8	Palustrine wetland seeding on Tract 2012004	LP-2	Yes	\$20,000	\$31,263
NC 9	Brush, tree, cattail herbicide spraying	LP-2	No <sup>1</sup>	\$3,500	\$0

1. No issues identified.

**Priority Area:** *Species Habitat*

**Item(s):** *Other Species of Concern*

No.	Management Activities	Budget Line Item	Completed	Cost (Estimated)	Actual Cost
NC 10	Habitat and species surveys on properties where work will occur	N/A	Yes	N/A	N/A
NC 11	Coordination with USFWS and NGPC to identify and mitigate potential impacts associated with land activities	N/A	Yes	N/A	N/A

**Priority Area:** *Operations and Maintenance*

**Item(s):** Basic Property Maintenance Obligations and Needs

No.	Management Activities	Budget Line Item	Completed	Cost (Estimated)	Actual Cost
NC 12	Fence and road maintenance	LP-4	Yes	\$12,500	\$10,429
NC 13	Noxious weed control	LP-4	Yes	\$3,000	\$4,218
NC 14	Mowing	LP-4	Yes	\$2,000	\$1,020

**Priority Area:** *Operations and Maintenance*

**Item(s):** Agricultural Operations

No.	Management Activities	Budget Line Item	Completed	Cost (Estimated)	Actual Cost
NC 15	Oversight of grazing and cropland leases	N/A	Yes	N/A	N/A
NC 16	Oversight of sand and gravel mining	N/A	Yes	N/A	N/A

**Priority Area: *Unplanned Expenses***

Tract No.	Management Activities	Item(s):	Budget Line Item	Actual Cost
2013001	Installation of groundwater monitoring wells	Maintain Suitable	LP-2	\$4,109
2013001	Check electrical on irrigation well	Basic Property Maintenance	LP-4	\$113
2012004	Electricity for Irrigation Well	Basic Property Maintenance	LP-4	\$783
2012004	Boundary Fence	Agricultural Operations	LP-4	\$17,067
2012004	Livestock Water Development	Agricultural Operations	LP-4	\$7,489

**Property Identification Key:**

2009008 - PRRIP Broadfoot Newark Tract  
2010002 - Broadfoot Kearney South Tract  
2011001 - PRRIP East Leaman Tract  
2011002 - PRRIP Follmer Alda Tract  
2012004 - PRRIP DeBore Tract  
2013001 - PRRIP Liehs Tract

## 2016 Non-Complex Tracts Budget Summary

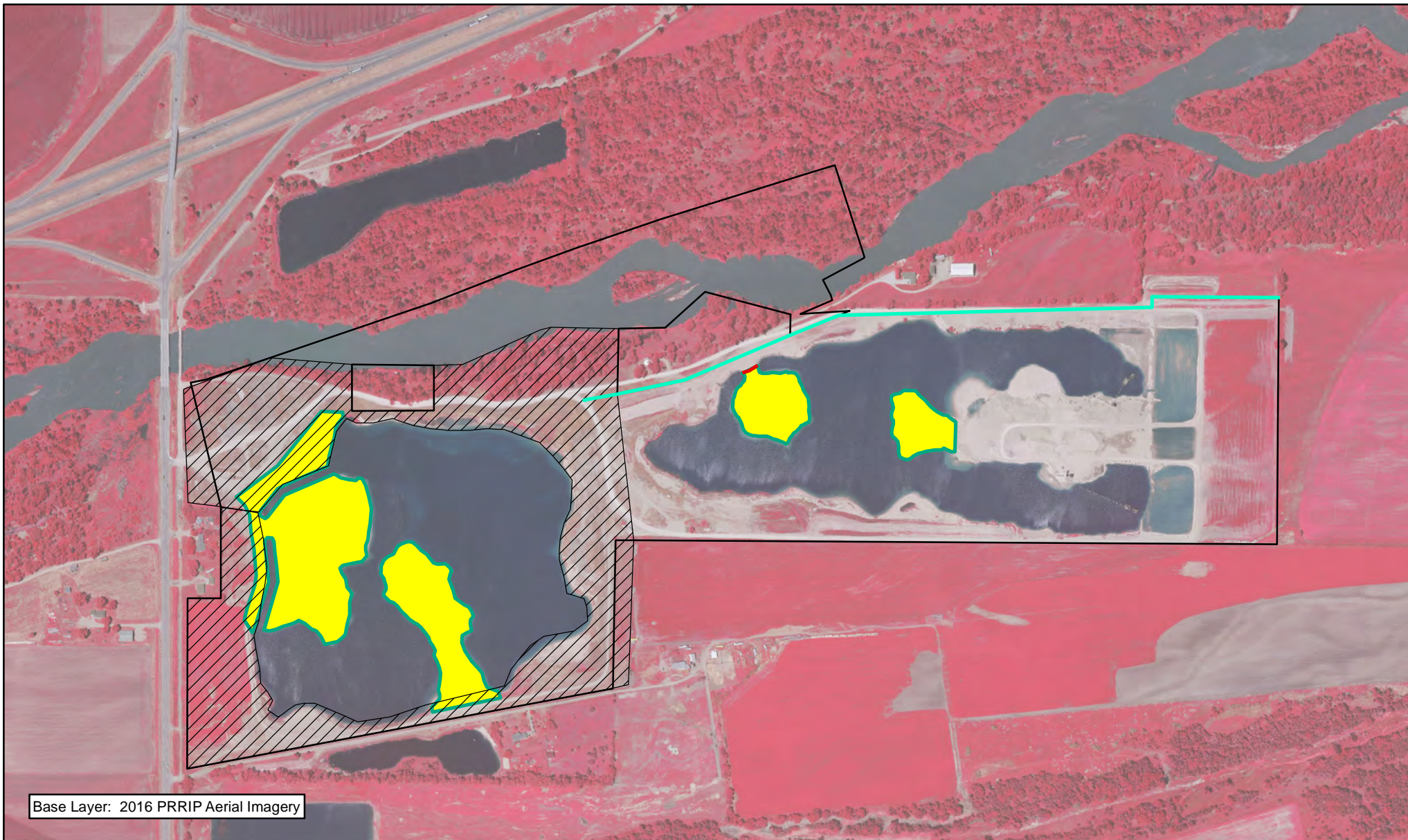
### 2016 Expenditures by Program Budget Line Item

Priority Area	Item	Budget Line Item	Estimated Expenditure	2016 Expenditure
Species Habitat	Create & Maintain Off-Channel Sand & Water Habitat	LP-2	\$30,000	\$26,291
Species Habitat	Create & Maintain Palustrine Wetland Habitat	LP-2	\$78,500	\$77,358
<b>Subtotal</b>			<b>\$108,500</b>	<b>\$103,649</b>
Operations and Maintenance	Property Maintenance and Agricultural Operations	LP-4	\$17,500	\$41,119
<b>Total</b>			<b>\$126,000</b>	<b>\$144,768</b>

## 2016 Revenues

Tract	Item	Estimated Income	2016 Income
Tract 2009008	Sand & Gravel Royalties	\$12,000	\$13,500
Tract 2009008	Cropland Income	\$8,600	\$1,100
Tract 2011001	2015 Hay Income		\$688
Tract 2011002	2015 Sand & Gravel Royalties		\$362
Tract 2011002	2016 Sand & Gravel Royalties	\$4,000	\$4,905
Tract 2011002	Cropland Income	\$4,000	\$4,726
Tract 2012004	Cropland Income	\$3,000	\$3,780
Tract 2012004	Grazing Income	\$2,000	\$1,645
Tract 2013001	Cropland Income	\$5,000	\$10,275
Tract 2013001	FSA payment	\$5,000	\$34
<b>Total</b>		<b>\$38,600</b>	<b>\$41,015</b>





## Legend

- Wovenwire Fence Construction
- Barbwire Fence Construction
- Herbicide
- Preemergent
- Noxious Weed Control



PLATTE RIVER  
RECOVERY IMPLEMENTATION PROGRAM



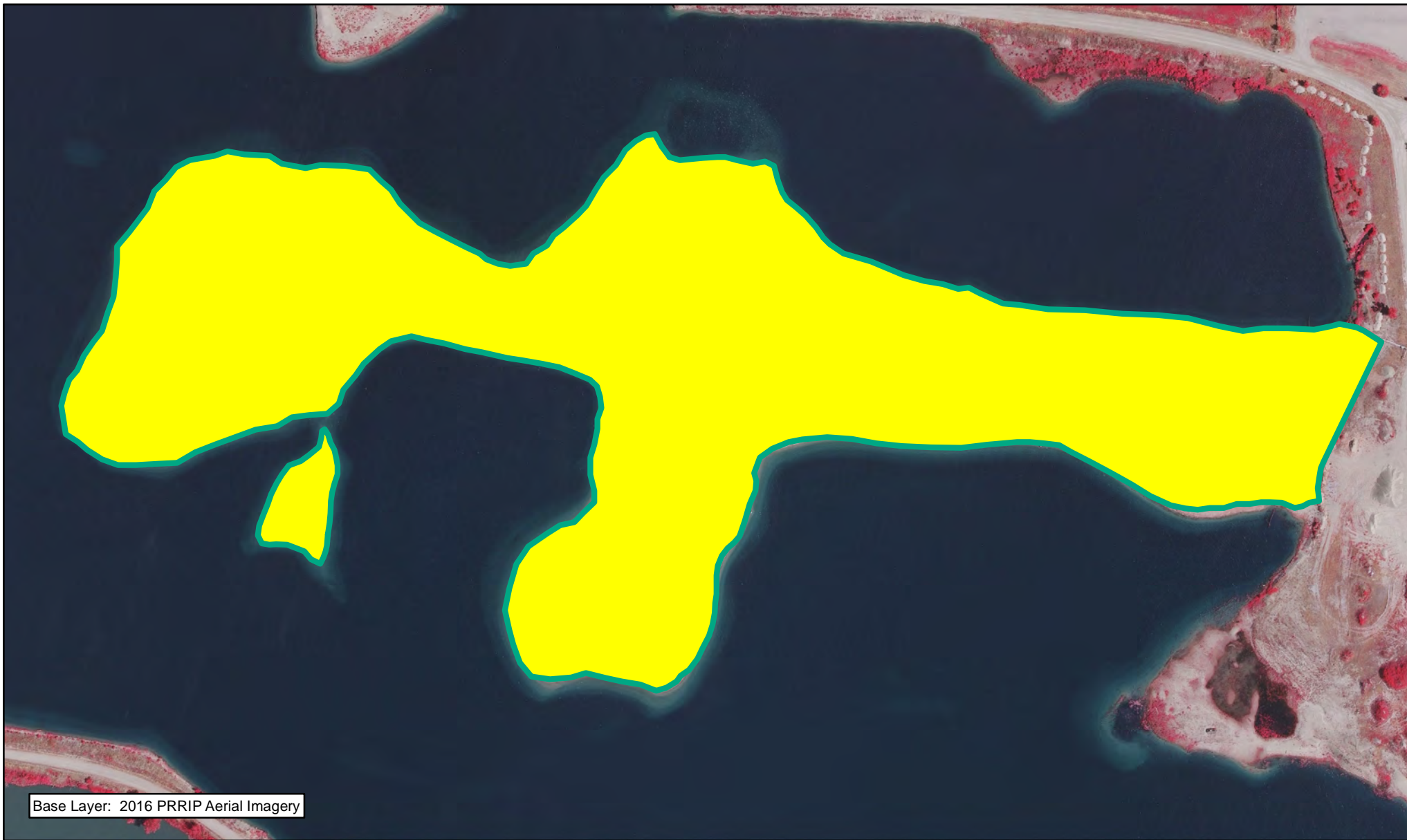
0.5 Miles

NON-COMPLEX  
TRACT 2009008  
FY 2016 ACTIVITIES

Date: 1/27/2017  
By: TRT

Figure 1








Base Layer: 2016 PRRIP Aerial Imagery



### Legend

-  Preemergent
-  Herbicide



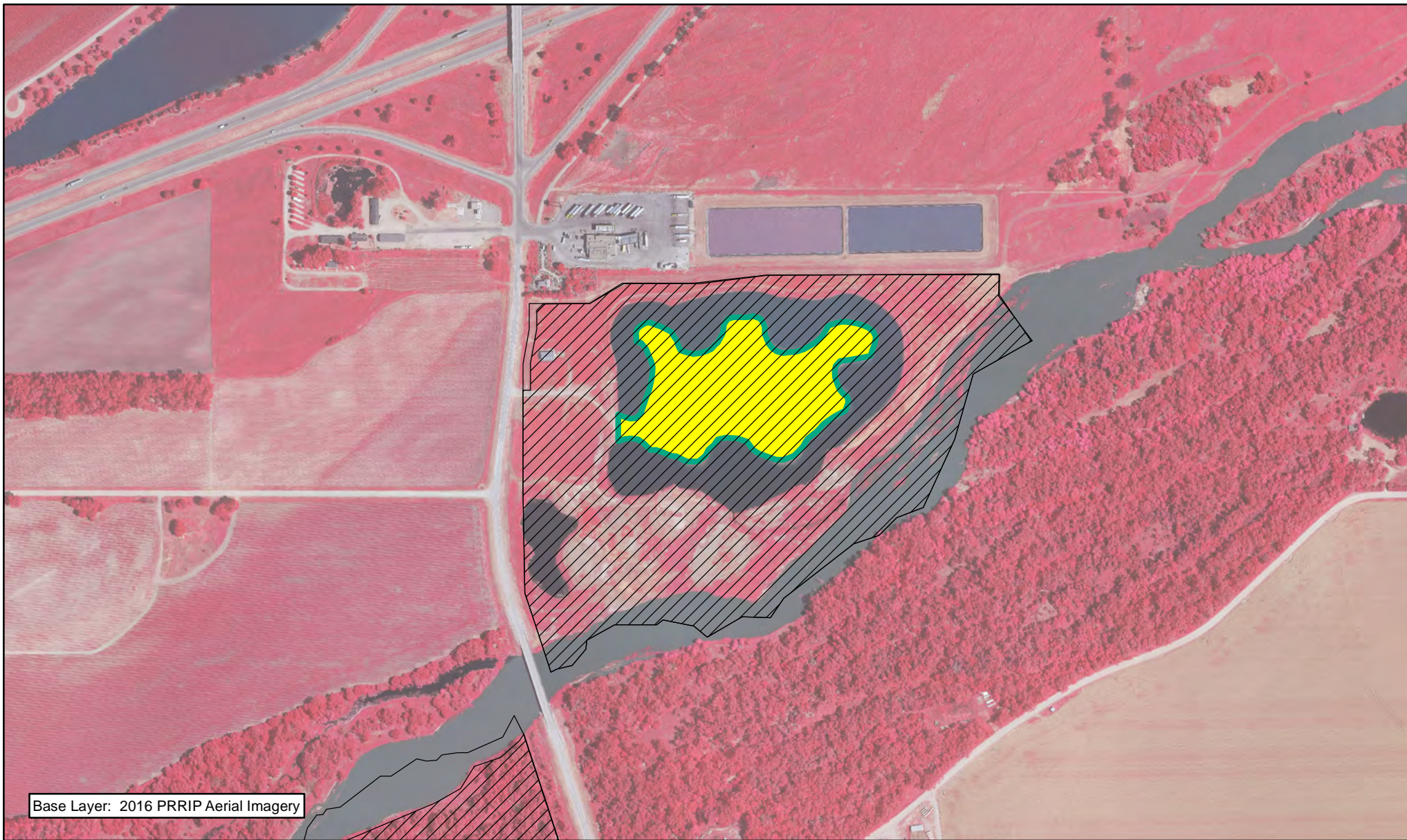
 Miles  
0.1

NON-COMPLEX  
TRACT 2010002  
FY 2016 ACTIVITIES




Date: 1/27/2017  
By: TRT

Figure 2






### Legend

-  Noxious Weed Control
-  Herbicide
-  Preemergent



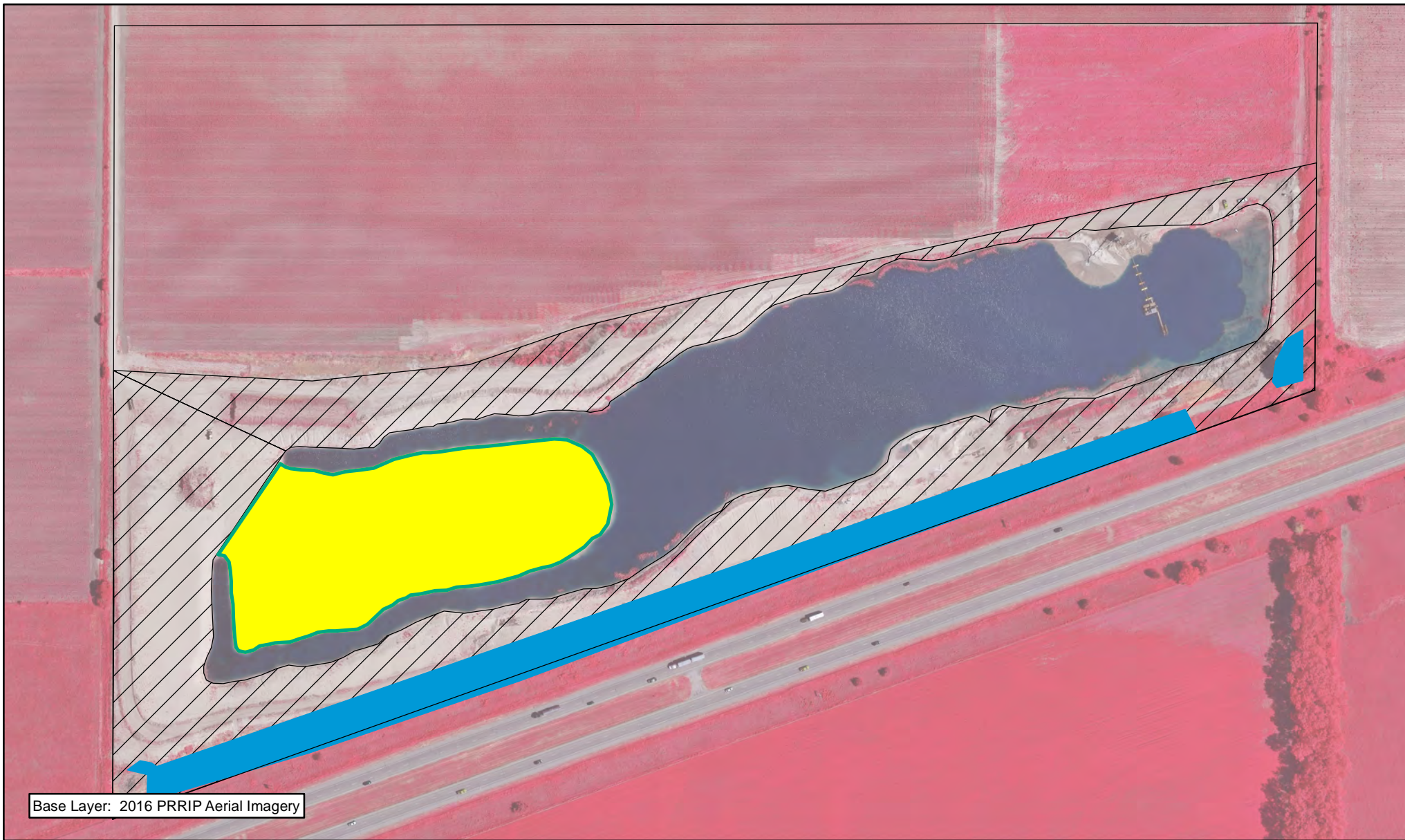
 Miles  
0.25

NON-COMPLEX  
TRACT 2011001  
FY 2016 ACTIVITIES

Date: 1/27/2017  
By: TRT

Figure 3



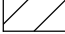






Base Layer: 2016 PRRIP Aerial Imagery



### Legend

-  Aboveground Tree Clearing
-  Herbicide
-  Noxious Weed Control
-  Preemergent



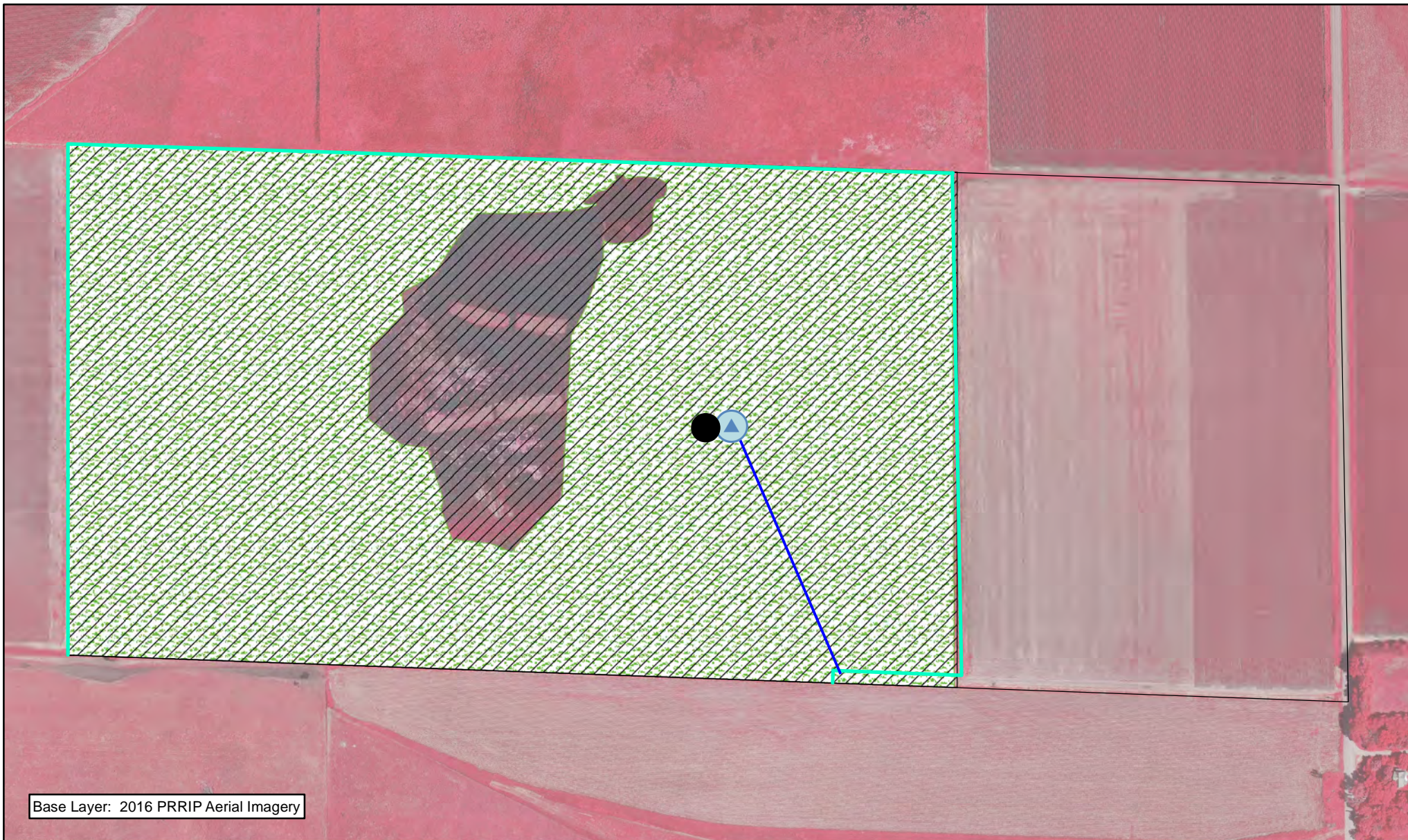
 0.1 Miles

NON-COMPLEX  
TRACT 2011002  
FY 2016 ACTIVITIES

Date: 1/27/2017  
By: TRT

Figure 4





### Legend

- Rubber Tire Tank
- ⬆ Well Installation
- Underground Secondary Electrical
- Barbwire Fence Construction
- ▨ Noxious Weed Control
- ▨ Grass Seeding



0.15 Miles

NON-COMPLEX  
TRACT 2012004  
FY 2016 ACTIVITIES







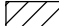

Date: 1/27/2017  
By: TRT

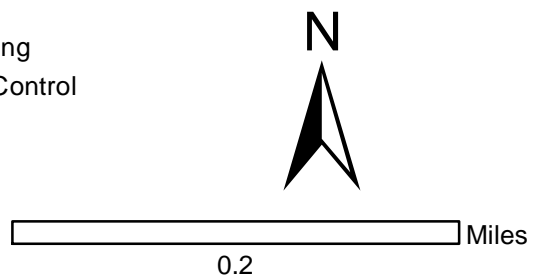
Figure 5





### Legend

-  Monitoring Well Installation
-  Well Decommissioning
-  Well Repair
-  Barbwire Fence Construction
-  Underground Pipe
-  Shredding/Mowing
-  Noxious Weed Control
-  Grass Seeding



NON-COMPLEX  
TRACT 2013001  
FY 2016 ACTIVITIES

Date: 1/27/2017  
By: TRT

Figure 6





**PLATTE RIVER**  
RECOVERY IMPLEMENTATION PROGRAM

Page Intentionally Left Blank

# 2016 Plum Creek "Complex" Annual Work Plan Report

## Platte River Recovery Implementation Program

For More Information Contact: Jerry F. Kenny, [kennyj@headwaterscorp.com](mailto:kennyj@headwaterscorp.com), (308) 237-5728

### General Priorities

- \* ***Good Neighbor Policy*** - Conducted all actions in accordance with Program's good neighbor policy.

### Adaptive Management Priorities

- \* ***Sediment Augmentation*** - Implementation of full-scale sediment augmentation to offset sediment deficit was delayed until 2017.

### Species Habitat Priorities

- \* ***Improve Target Species Sand and Water Habitat*** – Pre-emergent herbicide was applied on OCSW peninsulas to maintain tern and plover nesting habitat. Control in-channel vegetation was not necessary to maintain unobstructed view widths for whooping crane due to the 2015 natural high flow event.
- \* ***Protecting Other Species of Concern*** – Identified presence of and determine methods to protect other species of concern during implementation of land-related activities.

### Operations and Maintenance Priorities

- \* ***Basic Property Maintenance Obligations and Needs*** – Fulfilled basic property ownership obligations and needs including boundary fence signage, road maintenance, and noxious weed control.
- \* ***Agricultural Operations*** – Oversight of grazing lease on Tract 2009003. Oversight of cropland/hay leases on Tract 2009007.



*NOTE: The budget section of this work plan only contains information for work items that are specific to these tracts. As such, tract-specific research and monitoring actions are presented but system-scale actions like target species and geomorphology/vegetation monitoring are not.*

**Priority Area: General**

**Item(s): Complex Land Interest and Complex-Level Planning**

No.	Management Activities	Budget Line Item	Completed	Cost (Estimated)	Actual Cost
PC 1	Coordination of Program land actions with neighboring landowners	N/A	Yes	N/A	\$0
PC 2	Coordinate with NPPD to identify and mitigate potential impacts to leased NPPD nesting islands	N/A	Yes	N/A	\$0

**Priority Area: Adaptive Management**

**Item(s): Sediment Augmentation Experiment**

No.	Management Activities	Budget Line Item	Completed	Cost (Estimated)	Actual Cost
PC 3	Implementation of full-scale sediment augmentation management experiment	PD-22	No <sup>1</sup>	\$250,000	\$0

1. Full-scale augmentation operations delayed until 2017.

**Priority Area: *Species Habitat***

**Item(s): *Improve Target Species Sand and Water Habitat***

No.	Management Activities	Budget Line Item	Completed	Cost (Estimated)	Actual Cost
PC 4	Herbicide applications on OCSW peninsulas to maintain bare sand nesting habitat	LP-2	Yes	\$3,500	\$2,138
PC 5	Disking if necessary to provide in-channel vegetation control	LP-2	No <sup>2</sup>	\$14,500	\$0

2. Channel disking was not necessary due to high river flow.

**Priority Area: *Species Habitat***

**Item(s): *Whooping Crane Grassland / Wet Meadow Habitat***

No.	Management Activities	Budget Line Item	Completed	Cost (Estimated)	Actual Cost
PC 6	Prescribe burn of grassland units south of the channel	LP-2	No <sup>3</sup>	\$13,800	\$0
PC 7	Spray herbicide on brush in grassland and accretion	LP-2	No <sup>4</sup>	\$10,000	\$0

3. Weather and grass green-up ended burn season.

4. Brush spraying was not necessary.

**Priority Area:** *Species Habitat*

**Item(s):** *Other Species of Concern*

No.	Management Activities	Budget Line Item	Completed	Cost (Estimated)	Actual Cost
PC 8	Habitat and species surveys on properties where work will occur	N/A	Yes	N/A	N/A
PC 9	Coordination with USFWS and NGPC to identify and mitigate potential impacts associated with land activities	N/A	Yes	N/A	N/A

**Priority Area:** *Operations and Maintenance*

**Item(s):** Basic Property Maintenance Obligations and Needs

No.	Management Activities	Budget Line Item	Completed	Cost (Estimated)	Actual Cost
PC 10	Fence and road maintenance	LP-4	Yes	\$2,500	\$996
PC 11	Noxious weed control	LP-4	Yes	\$4,500	\$2,941
PC 12	Lodge & Quonset utilities and maintenance	LP-4	Yes	\$5,000	\$6,733
PC 13	Mowing	LP-4	Yes	\$2,000	\$2,019

**Priority Area:** *Operations and Maintenance*

**Item(s):** Agricultural Operations

No.	Management Activities	Budget Line Item	Completed	Cost (Estimated)	Actual Cost
PC 14	Oversight of grazing and cropland leases	N/A	Yes	N/A	N/A

**Priority Area:** *Unplanned Expenses*

Tract No.	Management Activities	Item(s):	Budget Line Item	Actual Cost
2009003	Grain bin demo & removal	Basic Property Maintenance	LP-4	\$2,555

**Property Identification Key:**

2009003 - PRRIP Dyer Tract

2009007 - PRRIP Cook Tract

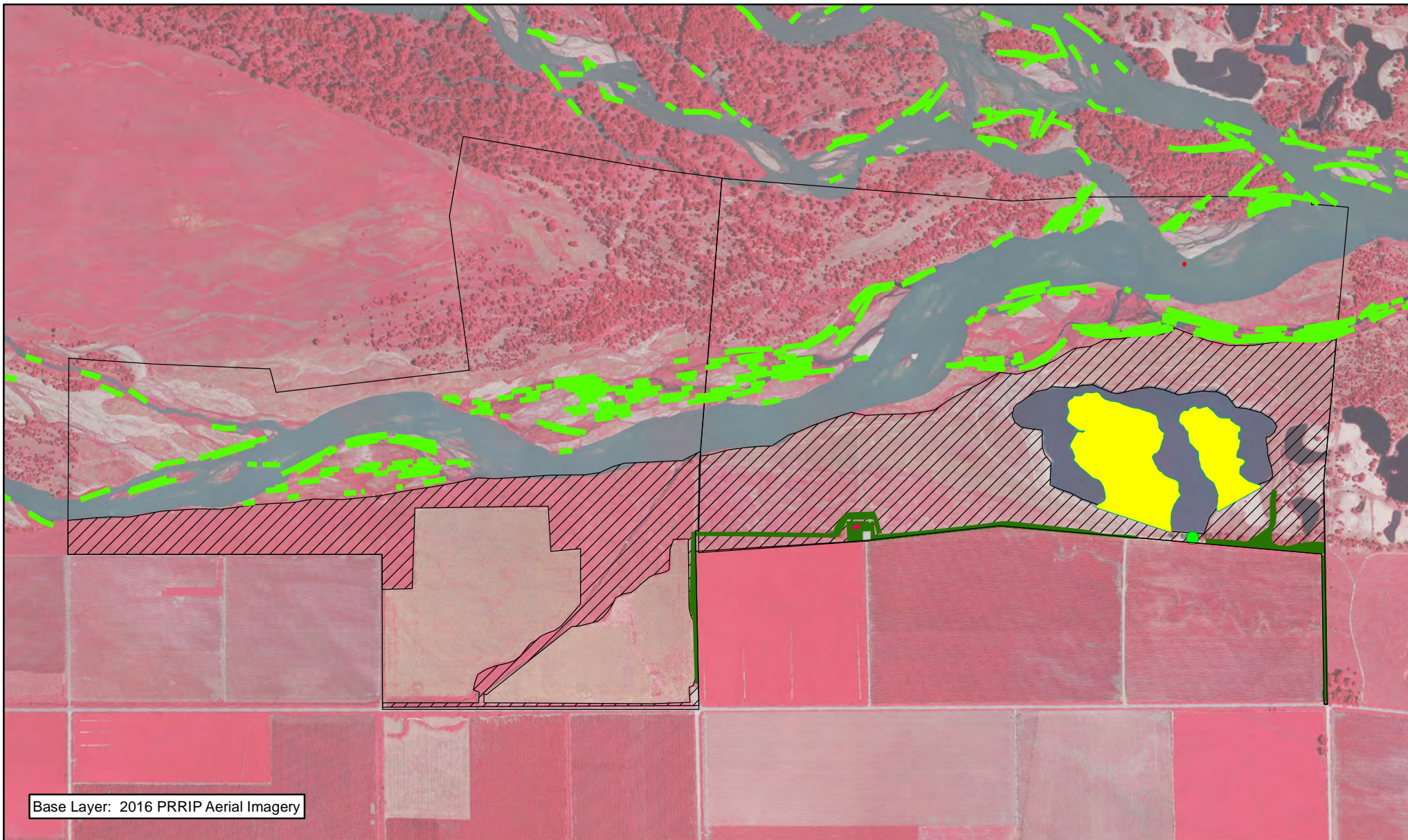
## 2016 Plum Creek Complex Budget Summary

### 2016 Expenditures by Program Budget Line Item

Priority Area	Item	Budget Line Item	Estimated Expenditure	2016 Expenditure
Adaptive Management	Sediment Augmentation Management Experiment	PD-22	\$250,000	\$0
Species Habitat	Target Species Sand and Water Habitat	LP-2	\$18,000	\$2,138
Species Habitat	Whooping Crane Wet Meadow/ Grassland Habitat	LP-2	\$23,800	\$0
<b>Subtotal</b>			<b>\$41,800</b>	<b>\$2,138</b>
Operations and Maintenance	Property Maintenance and Agricultural Operations	LP-4	\$14,000	\$15,244
<b>Total</b>			<b>\$305,800</b>	<b>\$17,382</b>

### Estimated 2016 Revenues

Tract	Item	Estimated Income	2016 Income
Tract 2009003	Grazing Income	\$2,000	\$1,000
Tract 2009003	NPPD Habitat	\$500	\$500
Tract 2009003	Phelps County Tax Refund		\$100
Tract 2009007	Haying Income	\$1,700	\$2,349
Tract 2009007	Cropland Income	\$5,550	\$5,550
<b>Total</b>		<b>\$9,750</b>	<b>\$9,499</b>



Base Layer: 2016 PRRIP Aerial Imagery



### Legend

- PVWMA Aerial Phrag Spraying
- Crushed Concrete
- Building Removal
- Shredding/Mowing
- Herbicide
- Preemergent
- Noxious Weed Control
- Well Repair



0.5 Miles

### PLUM CREEK COMPLEX FY 2016 ACTIVITIES

Date: 1/27/2017  
By: TRT

Figure 7



**PLATTE RIVER**  
RECOVERY IMPLEMENTATION PROGRAM

Page Intentionally Left Blank

# 2016 Cottonwood Ranch Complex Annual Work Plan Report

## Platte River Recovery Implementation Program

For More Information Contact: Jerry F. Kenny, [kennyj@headwaterscorp.com](mailto:kennyj@headwaterscorp.com), (308) 237-5728

### General Priorities

- \* ***Good Neighbor Policy*** - Conducted all actions in accordance with Program's good neighbor policy.

### Adaptive Management Priorities

- \* ***Riverine versus Off-Channel Tern and Plover Nesting*** – Monitored tern and plover use and productivity on Program riverine habitat and nearby off-channel sand & water nesting habitat (OCSW nesting complex on CWR property).

### Species Habitat Priorities

- \* ***Maintain Target Species Sand and Water Habitat*** – Applied pre-emergent herbicide on cleared areas and tern and plover nesting islands. In-channel disking was not necessary due to 2015 natural high flow event.
- \* ***Management of grassland/wet meadow habitat for whooping cranes and sandhill cranes*** – Implementation of prescribed fire and grazing rotation in Section 16 T8N R19W (Tracts 2008002 and 2010001) to provide short grassland structure on ¼ of area during spring and fall crane migrations. Drain check structures to improve wetland hydrology.
- \* ***Protecting Other Species of Concern*** – Identified presence of and determine methods to protect other species of concern during implementation of land-related activities.



## Operations and Maintenance Priorities

- \* **Basic Property Maintenance Obligations and Needs** – *Fulfilled basic property ownership obligations and needs on Tracts 2008002, 2009006, and 2010001 including fence and road maintenance and noxious weed control.*
- \* **Agricultural Operations** – *Oversight of grazing/ haying leases on Tracts 2009006 and 2010001.*
- \* **Bridge Repair** – *Repaired culvert bridge across Spring Creek*

*NOTE: The budget section of this work plan only contains information for work items that are specific to these tracts. As such, tract-specific research and monitoring actions are presented but system-scale actions like target species and geomorphology/vegetation monitoring are not.*

**Priority Area:** *General*

**Item(s):** **Complex Land Interest and Complex-Level Planning**

No.	Management Activities	Budget Line Item	Completed	Cost (Estimated)	Actual Cost
CR 1	Coordination of Program land actions with neighboring landowners	N/A	Yes	N/A	N/A

**Priority Area:** *Species Habitat*

**Item(s):** *Improve Target Species Sand and Water Habitat*

No.	Management Activities	Budget Line Item	Completed	Cost (Estimated)	Actual Cost
CR 2	Tract 2008002 Pre-emergent herbicide application on in-channel tern and plover nesting habitat and OCSW	LP-2	Yes	\$5,000	\$1,245
CR 3	Disking if necessary to provide in-channel vegetation control	LP-2	No <sup>1</sup>	\$9,000	\$0

1. Channel disking was not necessary due to high river flow.

**Priority Area: *Species Habitat***

**Item(s): *Whooping Crane Grassland / Wet Meadow Habitat***

No.	Management Activities	Budget Line Item	Completed	Cost (Estimated)	Actual Cost
CR 4	Tract 2010001 Annual electrical service fee at two irrigation wells to supplement water to wetland	LP-2	Yes	\$10,000	\$5,485
CR 5	Tract 2010001- SW pasture herbicide treatment	LP-2	No <sup>2</sup>	\$4,131	\$0
CR 6	Tract 2010001 - Prescribed burn on Morse-middle pasture	LP-2	Yes	\$9,600	\$7,110
CR 7	Tract 2008002 Prescribed burn on area south of OCSW	LP-2	Yes	\$5,160	\$4,160
CR 8	Tract 2008002 Prescribed burn on Lloyd island	LP-2	Yes	\$11,700	\$9,432
CR 9	Tract 2008002 Prescribed burn on NW ¼ Section 16	LP-2	Yes	\$9,600	\$7,013

2. Treatment was delayed due to pending water recharge project.

**Priority Area:** *Species Habitat*

**Item(s):** *Other Species of Concern*

No.	Management Activities	Budget Line Item	Completed	Cost (Estimated)	Actual Cost
CR 10	Habitat and species surveys on properties where work will occur	N/A	Yes	N/A	N/A
CR 11	Coordination with USFWS and NGPC to identify and mitigate potential impacts associated with land activities	N/A	Yes	N/A	N/A

**Priority Area:** *Operations and Maintenance*

**Item(s):** Basic Property Maintenance Obligations and Needs

No.	Management Activities	Budget Line Item	Completed	Cost (Estimated)	Actual Cost
CR 12	Replace boundary fence on Middle pasture of Tract 2010001	LP-4	No <sup>3</sup>	\$26,400	\$0
CR 13	Fence and road maintenance	LP-4	Yes	\$4,500	\$5,685
CR 14	Noxious weed control	LP-4	Yes	\$11,000	\$5,260
CR 15	Mowing	LP-4	No <sup>4</sup>	\$3,000	\$0

3. Construction was delayed due to pending water recharge project.

4. No issues were identified.

**Priority Area: *Operations and Maintenance***

**Item(s): Agricultural Operations**

No.	Management Activities	Budget Line Item	Completed	Cost (Estimated)	Actual Cost
CR 16	Tract 2009006 grazing lease oversight	N/A	Yes	N/A	N/A
CR 17	Tract 2010001 grazing lease oversight	N/A	Yes	N/A	N/A
CR 18	Tract 2010001 haying lease oversight	N/A	Yes	N/A	N/A

**Priority Area: *Unplanned Expenses***

Tract No.	Management Activities	Item(s):	Budget Line Item	Actual Cost
2010001	Electric line installation from irrigation well to livestock well		LP-2	\$3,272
2010001	Clean up wood & debris in east hay meadow around		LP-2	\$1,000
2010001	Prescribed fire on SW 1/2 on areas unable to hay		LP-2	\$1,935
2010001	Installed auto start on west irrigation well		LP-2	\$366
2010001			LP-4	\$240
	Fix breach at Overton S & G		LP-2	\$10,700
2008002	Brush Spraying		LP-2	\$695
2010001	Replaced Gaskets at well		LP-4	\$133

**Property Identification Key:**

2008002 - NPPD Cottonwood Ranch

2009006 - PRRIP Stall Tract

2010001 - PRRIP Morse Tract

## 2016 Cottonwood Ranch Complex Budget Summary

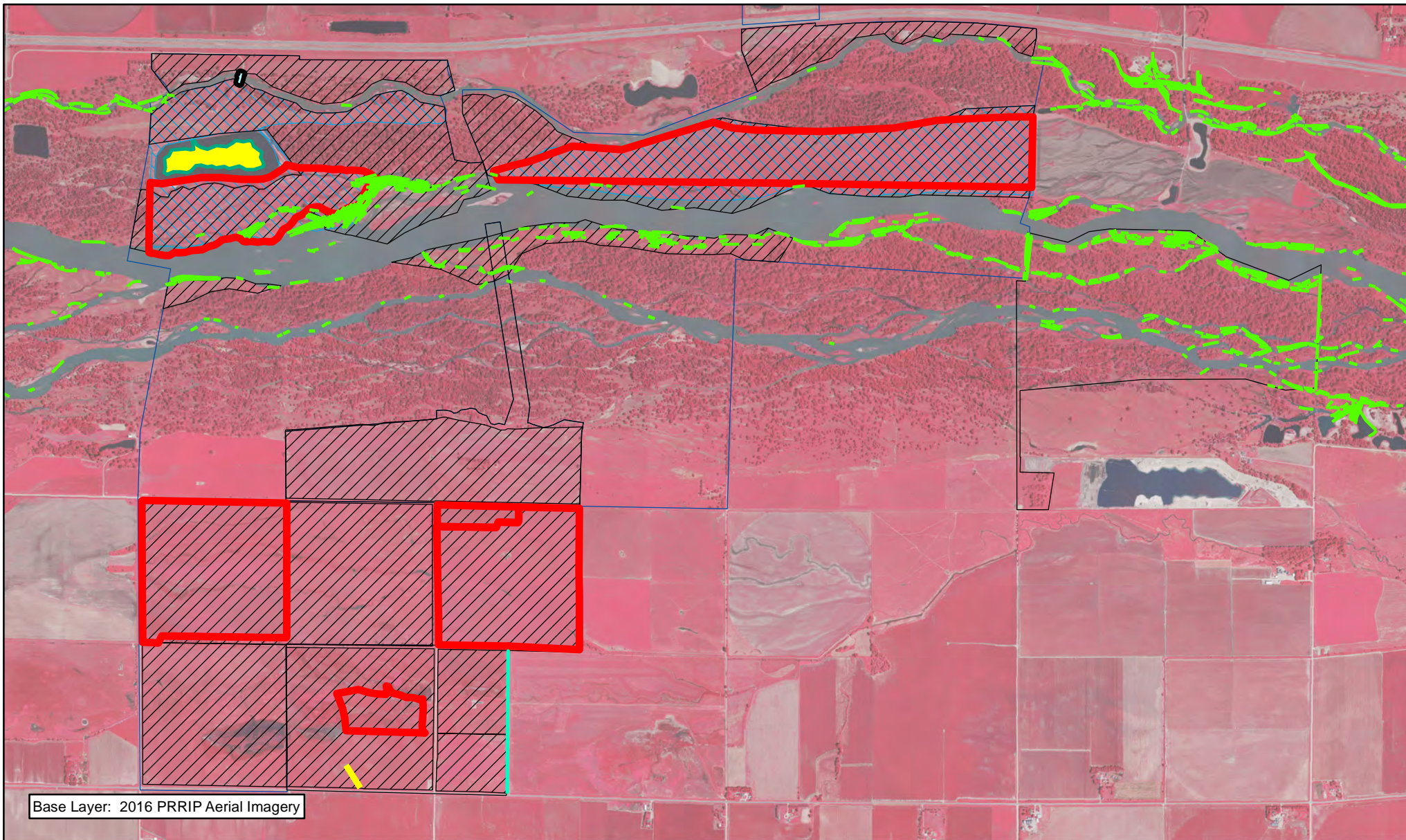
### 2016 Expenditures by Program Budget Line Item

Priority Area	Item	Budget Line Item	Estimated Expenditure	2016 Expenditure
Adaptive Management & Species Habitat	Target Species Sand and Water Habitat	LP-2	\$14,000	\$11,945
Species Habitat	Whooping Crane Wet Meadow/ Grassland Habitat	LP-2	\$50,191	\$40,468
<b>Subtotal</b>			<b>\$64,191</b>	<b>\$52,413</b>
Operations and Maintenance	Property Maintenance and Agricultural Operations	LP-4	\$44,900	\$11,318
<b>Total</b>			<b>\$109,091</b>	<b>\$63,731</b>


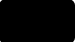








### Estimated 2016 Revenues

Tract	Item	Estimated Income	2016 Income
Tract 2009006	Grazing Income	\$4,000	\$0
Tract 2010001	Grazing Income	\$16,000	\$12,595
Tract 2010001	Haying Income	\$5,000	\$11,251
<b>Total</b>		<b>\$25,000</b>	<b>\$23,846</b>






### Legend

- |  |  |
|--|--|
|  Barbwire Fence Construction      |  Bridge Repair        |
|  Underground Secondary Electrical |  Brush Control        |
|  PVWMA Aerial Phrag Spraying      |  Noxious Weed Control |
|  Prescribed Fire                  |  Herbicide            |
|  Cobble Rock                      |  Preemergent          |



 Miles  
1

### COTTONWOOD RANCH COMPLEX FY 2016 ACTIVITIES

Date: 1/27/2017  
By: TRT

Figure 8



**PLATTE RIVER**  
RECOVERY IMPLEMENTATION PROGRAM

Page Intentionally Left Blank



# 2016 Elm Creek Complex Annual Work Plan Report

## Platte River Recovery Implementation Program

For More Information Contact: Jerry F. Kenny, [kennyj@headwaterscorp.com](mailto:kennyj@headwaterscorp.com), (308) 237-5728

### General Priorities

- \* ***Good Neighbor Policy*** - Conducted all actions in accordance with Program's good neighbor policy.

### Adaptive Management Priorities

- \* ***Whooping Crane Riverine Habitat Experiment*** – Vegetation control in and adjacent to channel was not necessary in 2016 to maintain a range of unobstructed view widths above Program suitability criteria due to natural high flow in 2015.
- \* ***Riverine versus Off-Channel Tern and Plover Nesting*** – Monitored tern and plover use and productivity on Program riverine habitat and nearby off-channel sand & water nesting habitat (OCSW nesting complex on CWR property).

### Species Habitat Priorities

- \* ***Maintain Target Species Sand and Water Habitat*** – In-channel nesting islands were eroded in 2015 and not reconstructed in 2016 pending the outcome of a structured decision-making process. In-channel vegetation control was not necessary due to natural high flow event in 2015.
- \* ***Protecting Other Species of Concern*** – Identified presence of and determine methods to protect other species of concern during implementation of land-related activities.

## Operations and Maintenance Priorities

- \* **Basic Property Maintenance Obligations and Needs** – *Fulfilled basic property ownership obligations and needs on Tracts 2009002, 2009005, 2012001 and 2012002 including fence and road maintenance and noxious weed control.*
- \* **Agricultural Operations** – *Oversight of grazing/ haying leases on Tracts 2009005, 2012001 and 2012002.*

*NOTE: The budget section of this work plan only contains information for work items that are specific to these tracts. As such, tract-specific research and monitoring actions are presented but system-scale actions like target species and geomorphology/vegetation monitoring are not.*

**Priority Area:** *General*

**Item(s):** **Complex Land Interest and Complex-Level Planning**

No.	Management Activities	Budget Line Item	Completed	Cost (Estimated)	Actual Cost
EC 1	Coordination of Program land actions with neighboring landowners	N/A	Yes	N/A	N/A

**Priority Area:** *Adaptive Management & Target Species Habitat*

**Item(s):** *Tern, Plover and Whooping Crane Riverine Habitat Experiments*

No.	Management Activities	Budget Line Item	Completed	Cost (Estimated)	Actual Cost
EC 2	Herbicide applications on islands to maintain bare sand nesting habitat	LP-2	No <sup>1</sup>	\$4,500	\$0
EC 3	In-channel cross disking (below diversion) and overbank mowing to maintain active channel and	LP-2	No <sup>2</sup>	\$15,500	\$0
EC 4	Island Reconstruction	LP-2	No <sup>3</sup>	\$40,000	\$0

1. No islands were present.
2. Channel disking was not necessary due to high river flow.
3. Islands were not reconstructed per structured decision-making process.

**Priority Area:** *Species Habitat*

**Item(s):** *Whooping Crane Grassland / Wet Meadow Habitat*

No.	Management Activities	Budget Line Item	Completed	Cost (Estimated)	Actual Cost
EC 5	Tract 2009002 Prescribed burn (41 ac)	LP-2	No <sup>4</sup>	\$2,460	\$0
EC 6	Tract 2015003 Prescribed burn (27 ac)	LP-2	No <sup>5</sup>	\$1,620	\$0
EC 7	Tract 2009005 Prescribed burn (63 ac)	LP-2	Yes	\$3,780	\$3,047
EC 8	Tract 2012002 Prescribed burn (158 ac)	LP-2	Yes	\$9,480	\$7,642
EC 9	Tract 2009002 & Tract 2015003 mulching treatment	LP-2	Yes	\$20,000	\$1,656
EC 10	Tract 2012002 mulching treatment	LP-2	Yes	\$20,000	\$14,520

4. Weather and grass green-up ended burn season.

5. Weather and grass green-up ended burn season.

**Priority Area: *Species Habitat***

**Item(s): *Other Species of Concern***

No.	Management Activities	Budget Line Item	Completed	Cost (Estimated)	Actual Cost
EC 11	Habitat and species surveys on properties where work will occur	N/A	Yes	N/A	N/A
EC 12	Coordination with USFWS and NGPC to identify and mitigate potential impacts associated with land activities	N/A	Yes	N/A	N/A

**Priority Area: *Operations and Maintenance***

**Item(s): Basic Property Maintenance Obligations and Needs**

No.	Management Activities	Budget Line Item	Completed	Cost (Estimated)	Actual Cost
EC 13	Tract 2009002 building utilities and maintenance	LP-4	Yes	\$1,500	\$5,134
EC 14	Fence and road maintenance	LP-4	No <sup>6</sup>	\$6,000	\$0
EC 15	Mowing	LP-4	Yes	\$1,000	\$1,402
EC 16	Noxious weed control	LP-4	Yes	\$20,000	\$18,823
EC 17	Tract 2012002 repair flood-damaged west access road	LP-4	No <sup>7</sup>	\$20,000	\$0

6. No issues were identified.

7. Wrapped into NPPD project. See below.

**Priority Area: Operations and Maintenance**

**Item(s): Agricultural Operations**

No.	Management Activities	Budget Line Item	Completed	Cost (Estimated)	Actual Cost
EC 18	Tract 2009002 Crop oversight	N/A	Yes	N/A	N/A
EC 19	Tract 2009005 grazing lease oversight	N/A	Yes	N/A	N/A
EC 20	Tract 2012001 haying lease oversight	N/A	Yes	N/A	N/A
EC 21	Tract 2012002 grazing lease oversight	N/A	Yes	N/A	N/A

**Priority Area: Unplanned Expenses**

Tract No.	Management Activities	Item(s):	Budget Line Item	Actual Cost
2009005	Clear fire line, fenceline & mulch downed woody material	Basic Property	LP-4	\$4,355
	Rebuilt and rip rap 1500 ft upstream from south end of Kearney canal headworks	Basic Property Maintenance	LP-4	\$75,000

**Property Identification Key:**

2009002 – PRRIP Bartels Tract

2009005 – PRRIP McCormick Tract

2012001 – PRRIP Sullwold Tract

2012002 – PRRIP Johns Tract

## 2016 Elm Creek Complex Budget Summary

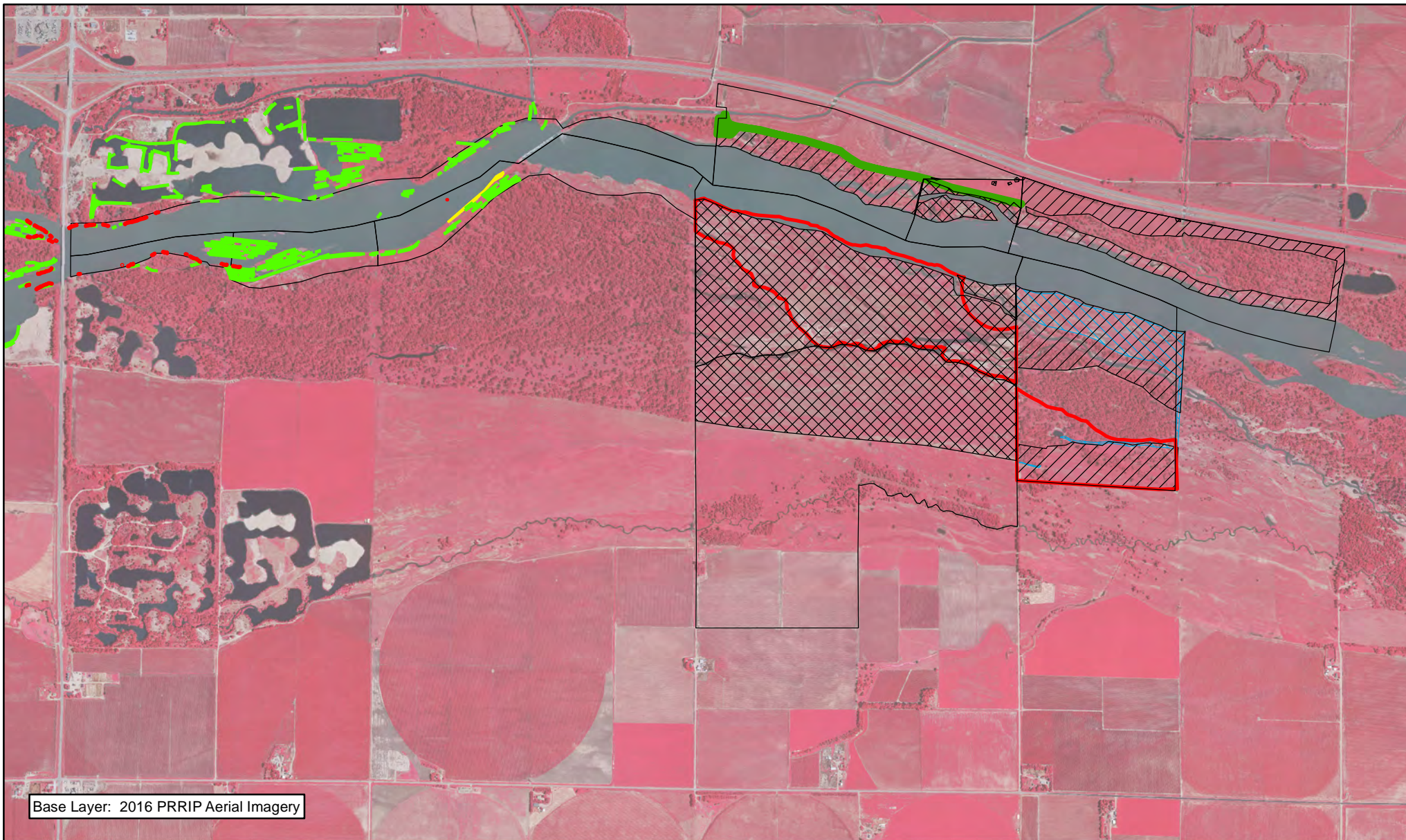
### 2016 Expenditures by Program Budget Line Item

Priority Area	Item	Budget Line Item	Estimated Expenditure	2016 Expenditure
Adaptive Management & Species Habitat	Target Species Sand and Water Habitat	LP-2	\$60,000	\$0
Species Habitat	Whooping Crane Wet Meadow/ Grassland Habitat	LP-2	\$57,340	\$26,865
<b>Subtotal</b>			<b>\$117,340</b>	<b>\$26,865</b>
Operations and Maintenance	Property Maintenance and Agricultural Operations	LP-4	\$48,500	\$104,714
<b>Total</b>			<b>\$165,840</b>	<b>\$131,579</b>

### Estimated 2016 Revenues

Tract	Item	Estimated Income	2016 Income
Tract 2009002	Crop Income	\$4,350	\$4,350
Tract 2009005	Grazing Income	\$2,500	\$0
Tract 2012001	Haying Income	\$3,000	\$2,793
Tract 2012002	Grazing Income	\$8,100	\$7,290
<b>Total</b>		<b>\$17,950</b>	<b>\$14,433</b>





Base Layer: 2016 PRRIP Aerial Imagery



PLATTE RIVER  
RECOVERY IMPLEMENTATION PROGRAM

# **Legend**

- Riprap
- Tree/Brush Mulching
- PVWMA Aerial Phrag Spraying
- PVWMA Airboat Phrag Spraying
- Shredding/Mowing
- Prescribed Fire
- Brush Control
- Noxious Weed Control



1 Miles

## **ELM CREEK COMPLEX FY 2016 ACTIVITIES**

Date: 1/27/2017  
By: TRT

**Figure 9**





**PLATTE RIVER**  
RECOVERY IMPLEMENTATION PROGRAM

Page Intentionally Left Blank

# 2016 Pawnee Complex Annual Work Plan Report

## Platte River Recovery Implementation Program

For More Information Contact: Jerry F. Kenny, [kennyj@headwaterscorp.com](mailto:kennyj@headwaterscorp.com), (308) 237-5728

### General Priorities

- \* **Good Neighbor Policy** - Conducted all actions in accordance with Program's good neighbor policy.

### Adaptive Management Priorities

- \* **Whooping Crane Riverine Habitat Experiment** – Riparian forest clearing project was designed and implemented to maintain a range of unobstructed view widths above Program suitability criteria.

### Species Habitat Priorities

- \* **Maintain Target Species Sand and Water Habitat** – Forest clearing project was implemented to improve distance to nearest forest. In-channel vegetation control was not necessary due to natural high flows in 2015.
- \* **Protecting Other Species of Concern** – Identified presence of and determine methods to protect other species of concern during implementation of land-related activities.

### Operations and Maintenance Priorities

- \* **Basic Property Maintenance Obligations and Needs** – Fulfilled basic property ownership obligations and needs on Tracts 2014002 and 2015002.
- \* **Agricultural Operations** – Oversight of grazing/ haying leases on Tracts 2014002 and 2015002.

*NOTE: The budget section of this work plan only contains information for work items that are specific to these tracts. As such, tract-specific research and monitoring actions are presented but system-scale actions like target species and geomorphology/vegetation monitoring are not.*

**Priority Area:** *General*

**Item(s):** **Complex Land Interest and Good Neighbor Policy**

No.	Management Activities	Budget Line Item	Completed	Cost (Estimated)	Actual Cost
PAW 1	Coordination of Program land actions with neighboring landowners	N/A	Yes	N/A	N/A
PAW 2	Develop Complex Restoration and Management Plan	N/A	No <sup>1</sup>	N/A	N/A

1. Management plan development was delayed pending outcome of whooping crane data analysis effort.

**Priority Area:** *Adaptive Management & Target Species Habitat*

**Item(s):** *Tern, Plover and Whooping Crane Riverine Habitat Experiments*

No.	Management Activities	Budget Line Item	Completed	Cost (Estimated)	Actual Cost
PAW 3	2016 Habitat Enhancement – woody vegetation clearing and disking	LP-2	Yes	\$150,000	\$87,400

**Priority Area:** *Species Habitat*

No.	Management Activities	Budget Line Item	Completed	Cost (Estimated)	Actual Cost
PAW 4	Habitat and species surveys on properties where work will occur	N/A	Yes	N/A	N/A
PAW 5	Coordination with USFWS and NGPC to identify and mitigate potential impacts associated with land activities	N/A	Yes	N/A	N/A

**Priority Area: Operations and Maintenance**

**Item(s): Basic Property Maintenance Obligations and Needs**

No.	Management Activities	Budget Line Item	Completed	Cost (Estimated)	Actual Cost
PAW 6	Identify boundaries of Tract 2014002 & 2015002 by tree/ brush mulching	LP-4	Yes	\$60,000	\$20,228
PAW 7	Fence and road maintenance	LP-4	Yes	\$25,000	\$22,612
PAW 8	Mowing	LP-4	No <sup>2</sup>	\$1,000	\$0
PAW 9	Noxious weed control	LP-4	No <sup>3</sup>	\$20,000	\$0

2. No issues were identified.

3. No issues were identified.

**Priority Area: Operations and Maintenance**

**Item(s): Agricultural Operations**

No.	Management Activities	Budget Line Item	Completed	Cost (Estimated)	Actual Cost
PAW 10	Tract 2014002 oversight	N/A	Yes	N/A	N/A
PAW 11	Tract 2015002 oversight	N/A	Yes	N/A	N/A

**Property Identification Key:**

2014002 - PRRIP Volentine Tract

2015002 - PRRIP BELF Tract

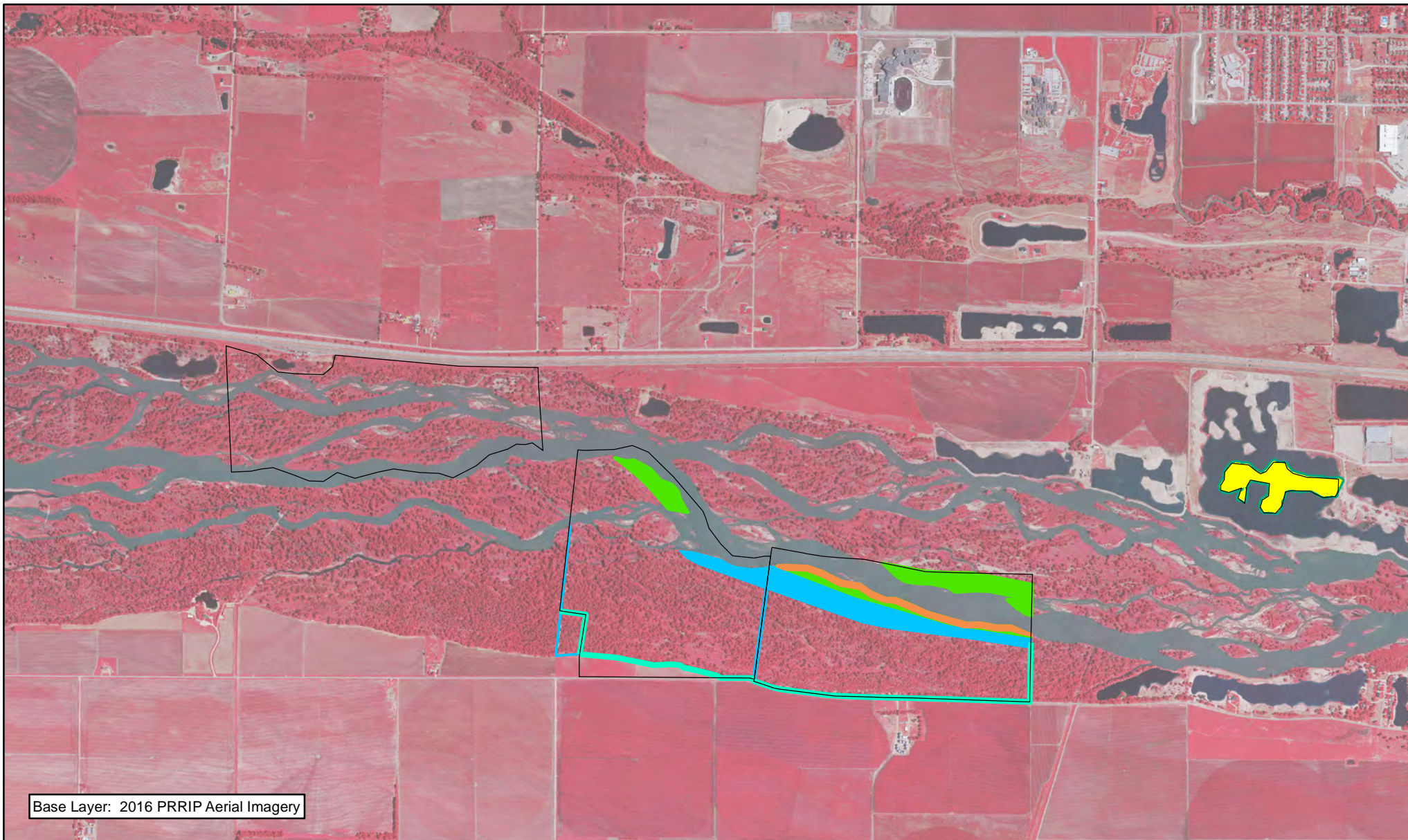
## 2016 Pawnee Complex Budget Summary

### 2016 Expenditures by Program Budget Line Item

Priority Area	Item	Budget Line Item	Estimated Expenditure	2016 Expenditure
Adaptive Management & Species Habitat	Target Species Sand and Water Habitat	LP-2	\$150,000	\$87,400
Operations and Maintenance	Property Maintenance and Agricultural Operations	LP-4	\$106,000	\$42,840
		<b>Total</b>	<b>\$256,000</b>	<b>\$130,240</b>

### Estimated 2016 Revenues

Tract	Item	Estimated Income	2016 Income
Tract 2015002	Crop Income	\$720	\$720
Tract 2015002	Grazing Income	\$0	\$0
Tract 2014002	Grazing Income	\$0	\$0
	<b>Total</b>	<b>\$720</b>	<b>\$720</b>



### Legend

- Barbwire Fence Construction
- Disking
- Clear & Grub
- Aboveground Tree Clearing
- Herbicide
- Preemergent



1 Miles

### PAWNEE COMPLEX FY 2016 ACTIVITIES

Date: 1/27/2017  
By: TRT

Figure 9



**PLATTE RIVER**  
RECOVERY IMPLEMENTATION PROGRAM

Page Intentionally Left Blank

# 2016 Fort Kearny Complex Annual Work Plan Report

## Platte River Recovery Implementation Program

For More Information Contact: Jerry F. Kenny, [kennyj@headwaterscorp.com](mailto:kennyj@headwaterscorp.com), (308) 237-5728

### General Priorities

- \* ***Good Neighbor Policy*** - Conducted all actions in accordance with Program's good neighbor policy.

### Adaptive Management Priorities

- \* ***Whooping Crane Riverine Habitat Experiment*** – Designed and implemented riparian tree clearing to provide a range of unforested widths above Program suitability criteria. in-channel vegetation control was not necessary due to natural high flows in 2015.

### Species Habitat Priorities

- \* ***Improve Target Species Sand and Water Habitat*** – Overbank tree clearing was conducted to ensure that channel meets whooping crane suitability criteria. Channel disking was not needed.
- \* ***Protecting Other Species of Concern*** – Identified presence of and determine methods to protect other species of concern during implementation of land-related activities.

### Operations and Maintenance Priorities

- \* ***Basic Property Maintenance Obligations and Needs*** – Fulfilled basic property ownership obligations and needs on Tracts 2008001, 2009001, 2009004, 2010003, 2012003 and 2015001 including fence and road maintenance and noxious weed control.
- \* ***Agricultural Operations*** – Oversight of grazing/ haying leases on Tracts 2008001, 2012003, 2009001, 2009004, and 2015001.



*NOTE: The budget section of this work plan only contains information for work items that are specific to these tracts. As such, tract-specific research and monitoring actions are presented but system-scale actions like target species and geomorphology/vegetation monitoring are not.*

**Priority Area: General**

**Item(s):** Complex Land Interest and Good Neighbor Policy

No.	Management Activities	Budget Line Item	Completed	Cost (Estimated)	Actual Cost
FK 1	Coordination of Program land actions with neighboring landowners	N/A	Yes	N/A	N/A

**Priority Area: Species Habitat**

**Item(s):** Improve Target Species Sand and Water Habitat

No.	Management Activities	Budget Line Item	Completed	Cost (Estimated)	Actual Cost
FK 2	Disking if necessary to provide in-channel vegetation control	LP-2	No <sup>1</sup>	\$19,575	\$0

1. Channel disking was not necessary due to high river flow.

**Priority Area: *Species Habitat***

**Item(s): *Whooping Crane Grassland / Wet Meadow Habitat***

No.	Management Activities	Budget Line Item	Completed	Cost (Estimated)	Actual Cost
FK 3	2016 Habitat Enhancement – woody vegetation clearing & native grass seeding	LP-2	Yes	\$100,000	\$49,540
FK 4	Tract 2008001 North & Middle Island Prescribe burn (146 ac)	LP-2	Yes	\$8,760	\$7,207
FK 5	Tract 2008001-South Prescribe burn (92 ac)	LP-2	No <sup>2</sup>	\$5,520	\$0
FK 6	Tract 2015001 SW unit Prescribe burn (204 ac)	LP-2	No <sup>3</sup>	\$12,240	\$0

2. Weather and grass green-up ended burn season.

3. Weather and grass green-up ended burn season.

**Priority Area: *Species Habitat***

**Item(s): *Other Species of Concern***

No.	Management Activities	Budget Line Item	Completed	Cost (Estimated)	Actual Cost
FK 7	Habitat and species surveys on properties where work will occur	N/A	Yes	N/A	N/A
FK 8	Coordination with USFWS and NGPC to identify and mitigate potential impacts associated with land activities	N/A	Yes	N/A	N/A

**Priority Area: Operations and Maintenance**

**Item(s): Basic Property Maintenance Obligations and Needs**

No.	Management Activities	Budget Line Item	Completed	Cost (Estimated)	Actual Cost
FK 9	Tract 2015001 East Fence Replacement (~4,890 LF)	LP-4	No <sup>4</sup>	\$12,225	\$0
FK 10	Tract 2009001 & 2015001 Groundwater monitoring well enclosures (18 wells)	LP-4	Yes	\$14,000	\$11,543
FK 11	Tract 2009004 livestock well & tank enclosure)	LP-4	Yes	\$2,000	\$3,209
FK 12	Noxious weed control	LP-4	Yes	\$15,000	\$6,941
FK 13	Fence and road maintenance	LP-4	Yes	\$9,000	\$6,981
FK 14	Mowing	LP-4	Yes	\$2,000	\$2,819

4. Fence was repaired rather than replaced.

**Priority Area: Operations and Maintenance**

**Item(s): Agricultural Operations**

No.	Management Activities	Budget Line Item	Completed	Cost (Estimated)	Actual Cost
FK 15	Tract 2008001 grazing lease oversight	N/A	Yes	N/A	N/A
FK 16	Tract 2012003 grazing lease oversight	N/A	Yes	N/A	N/A
FK 17	Tract 2015001 grazing lease oversight	N/A	Yes	N/A	N/A

**Priority Area:** *Unplanned Expenses*

Tract No.	Management Activities	Item(s):	Budget Line Item	Actual Cost
2009004	Livestock water	Agricultural	LP-4	\$712
2015001	Brush Spraying	Whooping Crane	LP-4	\$610
2009001	Electricity	Whooping Crane	LP-2	\$3,333
2009004	Electricity	Agricultural	LP-4	\$285
2015001	Electricity	Agricultural	LP-4	\$324

**Property Identification Key:**

2008001 – PRRIP Wyoming Property

2009001 – PRRIP Fox Tract

2009004 – PRRIP Hostetler Tract

2010003 – PRRIP Sherrerd/Clark Easement

2012003 – PRRIP Blessing Tract

2015001 – PRRIP Speidell Tract

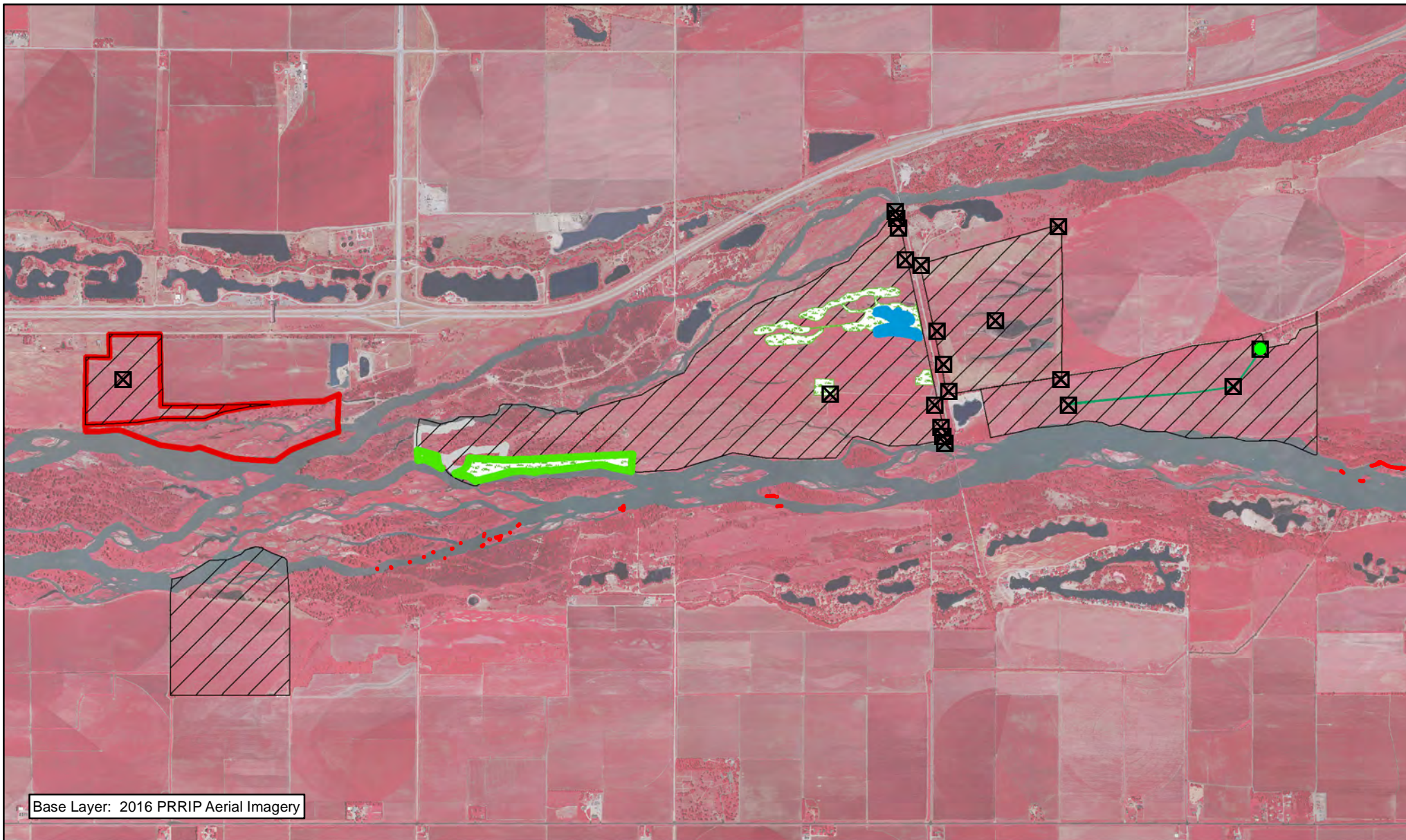
## 2016 Ft Kearny Complex Budget Summary

### 2016 Expenditures by Program Budget Line Item

Priority Area	Item	Budget Line Item	Estimated Expenditure	2016 Expenditure
Species Habitat	Improve Sand and Water Habitat	LP-2	\$19,575	\$0
Species Habitat	Whooping Crane Wet Meadow/ Grassland Habitat	LP-2	\$126,520	\$60,080
<b>Subtotal</b>			<b>\$146,095</b>	<b>\$60,080</b>
Operations and Maintenance	Property Maintenance and Agricultural Operations	LP-4	\$54,225	\$33,424
<b>Total</b>			<b>\$200,320</b>	<b>\$93,504</b>

## 2016 Revenues









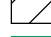

Tract	Item	Estimated Income	2016 Income
Tract 2008001 & 2012003	Grazing Income	\$7,700	\$4,500
Tract 2012003	Crop Income		\$1,900
Tract 2009001	Grazing Income	\$7,000	\$8,100
Tract 2009001	2015 FSA ARC Payment		\$9,904
Tract 2009001	2015 Cropshare Hay Payment		\$5,903
Tract 2009004	Grazing Income	\$14,000	\$6,680
Tract 2009004	2015 FSA ARC Payment		\$13,329
Tract 2009004	2015 Cropshare Hay Payment		\$5,354
Tract 2015001	Grazing Income	\$24,500	\$21,000
	<b>Total</b>	<b>\$53,200</b>	<b>\$76,670</b>




Base Layer: 2016 PRRIP Aerial Imagery



#### Legend

- |  |  |
|--|--|
|  Wetland Creation             |  Road Maintenance |
|  PVWMA Airboat Phrag Spraying |  Well Enclosure   |
|  Clear & Grub                 |  Well Repair      |
|  Grass Seeding                |  |
|  Prescribed Fire              |  |
|  Noxious Weed Control         |  |
|  Shredding/Mowing             |  |



 Miles  
1

#### FT. KEARNY COMPLEX FY 2016 ACTIVITIES

Date: 1/27/2017  
By: TRT

Figure 10



**PLATTE RIVER**  
RECOVERY IMPLEMENTATION PROGRAM

Page Intentionally Left Blank



# 2016 Minden – Gibbon Mgmnt Agreement Annual Work Plan Report

## Platte River Recovery Implementation Program

For More Information Contact: Jerry F. Kenny, [kennyj@headwaterscorp.com](mailto:kennyj@headwaterscorp.com), (308) 237-5728

### Species Habitat Priorities

- \* **Improve Target Species Sand and Water Habitat** – Maintenance of sand and water habitat for species through vegetation control to ensure that channel meets whooping crane suitability criteria was not necessary due to natural high flows in 2015.
- \* **Protecting Other Species of Concern** – Identify presence of and determine methods to protect other species of concern during implementation of land-related activities.

### Priority Area: Species Habitat

#### Item(s): Improve Target Species Sand and Water Habitat

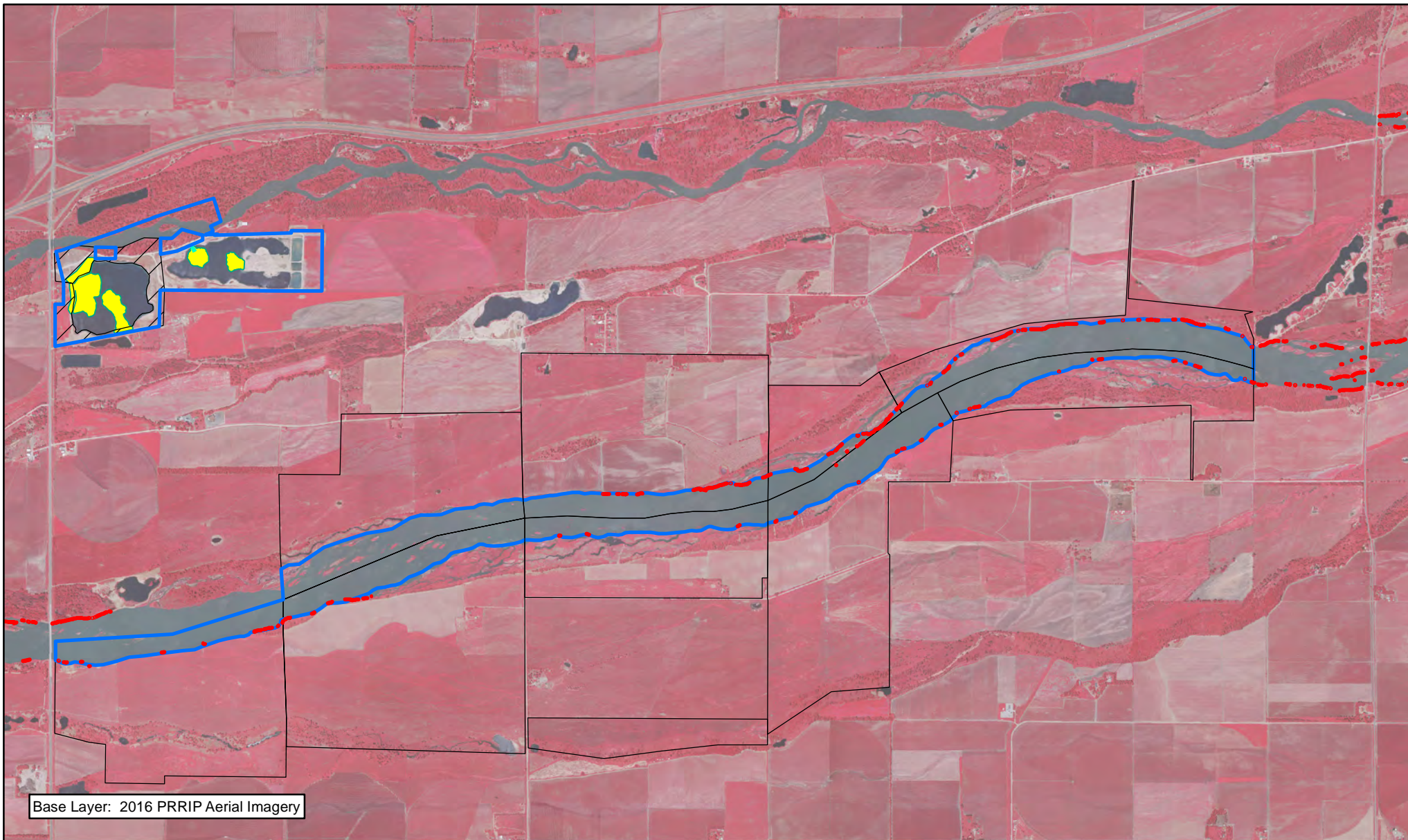
No.	Management Activities	Budget Line Item	Completed	Cost (Estimated)	Actual Cost
MG 1	Disking if necessary to provide in-channel vegetation control	LP-2	NO <sup>1</sup>	\$29,000	\$0

1. Channel disking was not necessary due to high river flow.

## 2016 Minden – Gibbon Mgmnt Agreement Annual Work Plan Report

### 2016 Expenditures by Program Budget Line Item

Priority Area	Item	Budget Line Item	Estimated Expenditure	2016 Expenditure
Species Habitat	Improve Target Species Sand and Water Habitat	LP-2	\$29,000	\$0
		<b>Total</b>	<b>\$29,000</b>	<b>\$0</b>



**Legend**

- PVWMA Airboat Phrag Spraying
- Noxious Weed Control
- Preemergent
- Herbicide
- Wovenwire Fence Construction



1 Miles

**MINDEN-GIBBON  
COMPLEX  
FY 2016 ACTIVITIES**

Date: 1/27/2017  
By: TRT

**Figure 11**



**PLATTE RIVER**  
RECOVERY IMPLEMENTATION PROGRAM

Page Intentionally Left Blank

# 2016 Shoemaker Island Complex Annual Work Plan Report

## Platte River Recovery Implementation Program

For More Information Contact: Jerry F. Kenny, [kennyj@headwaterscorp.com](mailto:kennyj@headwaterscorp.com), (308) 237-5728

### General Priorities

- \* ***Good Neighbor Policy*** - Conducted all actions in accordance with Program's good neighbor policy.

### Adaptive Management Priorities

- \* ***Tern and Plover Riverine Habitat Experiment*** – The 2015 flood eroded all in-channel habitat. That habitat was not reconstructed in 2016 pending the results of a structured decision making process.
- \* ***Whooping Crane Riverine Habitat Experiment*** – Vegetation clearing/disking was not necessary in 2016 to provide a range of unobstructed view widths that meet Program suitability criteria.
- \* ***Riverine versus Off-Channel Tern and Plover Nesting*** – Monitored tern and plover use and productivity on Program riverine habitat and nearby OCSW habitat.

### Species Habitat Priorities

- \* ***Maintain Target Species Sand and Water Habitat*** – Applied pre-emergent herbicide on cleared areas and tern and plover nesting islands, and in-channel diskings as necessary to control vegetation.
- \* ***Improve Target Species Sand and Water Habitat*** – No diskings were necessary to maintain suitable unvegetated widths for whooping crane use. Tern and plover nesting islands were not reconstructed pending the results of a structured decision-making process.
- \* ***Protecting Other Species of Concern*** – Identified presence of and determine methods to protect other species of concern during implementation of land-related activities.

## Operations and Maintenance Priorities

- \* **Basic Property Maintenance Obligations and Needs** – *Fulfilled basic property ownership obligations and needs on Tract 2010004 including fence and road maintenance and noxious weed control.*
- \* **Agricultural Operations** – *Oversight of grazing/ haying leases on Tract 2010004*

*NOTE: The budget section of this work plan only contains information for work items that are specific to these tracts. As such, tract-specific research and monitoring actions are presented but system-scale actions like target species and geomorphology/vegetation monitoring are not.*



**Priority Area:** *General*

**Item(s):** Complex Land Interest and Complex-Level Planning

No.	Management Activities	Budget Line Item	Completed	Cost (Estimated)	Actual Cost
SI 1	Coordination of Program land actions with neighboring landowners	N/A	Yes	N/A	N/A

**Priority Area:** *Species Habitat*

**Item(s):** *Improve Target Species Sand and Water Habitat*

No.	Management Activities	Budget Line Item	Completed	Cost (Estimated)	Actual Cost
SI 2	Disking if necessary to provide in-channel vegetation control	LP-2	No <sup>1</sup>	\$21,000	\$0

1. Channel disking was not necessary due to high river flow.

**Priority Area:** *Adaptive Management*

**Item(s):** Tern, Plover and Whooping Crane Habitat Experiments

No.	Management Activities	Budget Line Item	Completed	Cost (Estimated)	Actual Cost
SI 3	Pre-emergent herbicide application on in-channel nesting islands.	LP-2	No <sup>2</sup>	\$10,000	\$0
SI 4	Island Reconstruction	LP-2	No <sup>3</sup>	\$40,000	\$0

2. All in-channel nesting habitat was eroded by 2015 high flows.

3. Islands were not reconstructed pending results of a structured decision-making process.

**Priority Area:** *Species Habitat*

**Item(s):** *Whooping Crane Grassland / Wet Meadow Habitat*

No.	Management Activities	Budget Line Item	Completed	Cost (Estimated)	Actual Cost
SI 5	Tract 2010004 Prescribe burn South ½ - East & West Pastures (280 ac)	LP-2	Yes	\$16,800	\$14,172
SI 6	Tract 2010004 Prescribe burn-South of alfalfa meadow (25ac)	LP-2	Yes	\$1,500	\$1,306
SI 7	Tract 2010004 Prescribe burn-North hay (319 ac)	LP-2	Yes	\$19,140	\$3,192

**Priority Area:** *Species Habitat*

**Item(s):** *Other Species of Concern*

No.	Management Activities	Budget Line Item	Completed	Cost (Estimated)	Actual Cost
SI 8	Habitat and species surveys on properties where work will occur	N/A	Yes	N/A	N/A
SI 9	Coordination with USFWS and NGPC to identify and mitigate potential impacts associated with land activities	N/A	Yes	N/A	N/A

**Priority Area: Operations and Maintenance**

**Item(s): Basic Property Maintenance Obligations and Needs**

No.	Management Activities	Budget Line Item	Completed	Cost (Estimated)	Actual Cost
SI 10	Fence and road maintenance	LP-4	Yes	\$4,000	\$5,631
SI 11	Noxious weed control	LP-4	Yes	\$5,000	\$2,425
SI 12	Mowing	LP-4	Yes	\$2,000	\$645

**Priority Area: Operations and Maintenance**

**Item(s): Agricultural Operations**

No.	Management Activities	Budget Line Item	Completed	Cost (Estimated)	Actual Cost
SI 13	Tract 2010004 grazing & haying lease ov	N/A	Yes	N/A	N/A

**Priority Area: Unplanned Expenses**

Tract No.	Management Activities	Item(s):	Budget Line Item	Actual Cost
2010004	Cleared snow & smoothed road for delivery of Henson blind	Basic Property	LP-4	\$380
2010004	Solar unit at middle windmill	Agricultural	LP-4	\$4,144
2010004	Phrag & brush shredding/ mulching at Henson blind	Basic Property	LP-4	\$2,600
2010004	Fenceline tree mulching on south meadow	Agricultural	LP-4	\$8,318
2010004	Stock well Electricity	Agricultural	LP-4	\$249

**Property Identification Key:**  
2010004 – PRRIP Binfield Tract

## 2016 Shoemaker Island Complex Budget Summary

### 2016 Expenditures by Program Budget Line Item

Priority Area	Item	Budget Line Item	Estimated Expenditure	2016 Expenditure
Species Habitat	Improve Target Species Sand and Water Habitat	LP-2	\$21,000	\$0
Adaptive Management & Species Habitat	Tern, Plover and Whooping Crane Habitat Experiments	LP-2	\$50,000	\$0
Species Habitat	Whooping Crane Wet Meadow/ Grassland Habitat	LP-2	\$37,440	\$18,670
<b>Subtotal</b>			<b>\$108,440</b>	<b>\$18,670</b>
Operations and Maintenance	Property Maintenance and Agricultural Operations	LP-4	\$11,000	\$24,392
<b>Total</b>			<b>\$119,440</b>	<b>\$43,062</b>

### 2016 Revenues

Tract	Item	Estimated Income	2016 Income
Tract 2010004	Grazing & Haying Income	\$38,000	\$38,458
<b>Total</b>		<b>\$38,000</b>	<b>\$38,458</b>





**PLATTE RIVER**  
RECOVERY IMPLEMENTATION PROGRAM

Page Intentionally Left Blank