

CWCB Instream Flow Program Planning Workshop

25 January 2017

Colorado Parks and Wildlife Proposals for 2017-2018

Jay W Skinner
CPW ISF Program Specialist
303-291-7260
jay.skinner@state.co.us



2018 ISF Recommendations – Water Division One: Larimer County

Larimer County (Map 1):

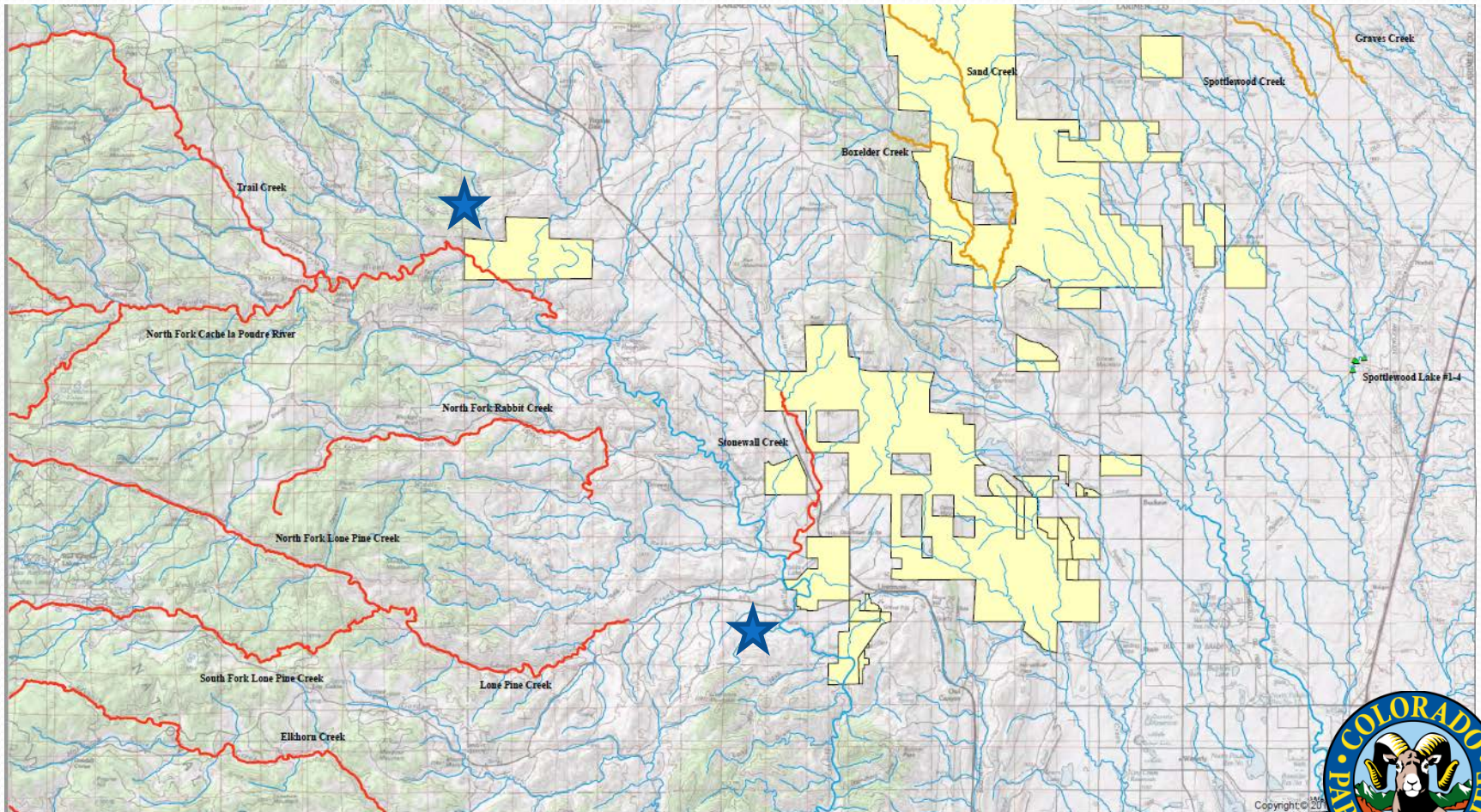
- N. Fk. Poudre River (Halligan Reservoir and TNC's Phantom Canyon Preserve through Eagle's Nest Open Space)

Larimer County (Map 2):

- Mainstem of the Poudre from Three Bell Conservation Easements (or higher up to tie in with existing work on Poudre) through Frank State Wildlife Area- ending at Larimer/Weld County line.
- Mill Creek and Spring Creek originating in Lory State Park and Horsetooth Mountain Open Space - flowing into Horsetooth Reservoir.



2018 ISF Recommendations – Water Division One: Larimer County (map 1)



2018 ISF Recommendations – Water Division One: Larimer County

Larimer County (Map 1):

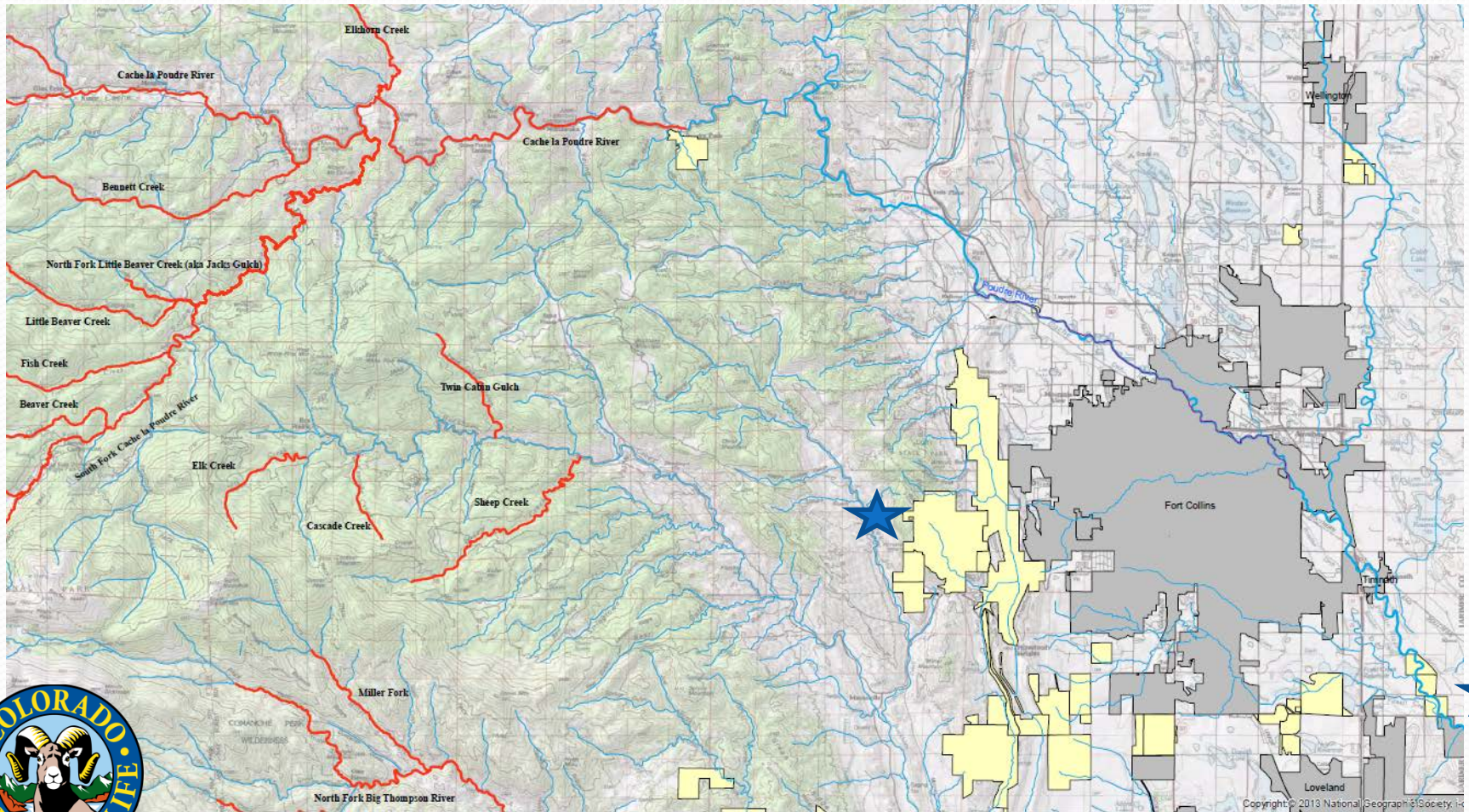
- N. Fk. Poudre River (Halligan Reservoir and TNC's Phantom Canyon Preserve through Eagle's Nest Open Space)

Larimer County (Map 2):

- Mainstem of the Poudre from Three Bell Conservation Easements (or higher up to tie in with existing work on Poudre) through Frank State Wildlife Area- ending at Larimer/Weld County line.
- Mill Creek and Spring Creek originating in Lory State Park and Horsetooth Mountain Open Space - flowing into Horsetooth Reservoir.



2018 ISF Recommendations – Water Division One: Larimer County (Map 2)



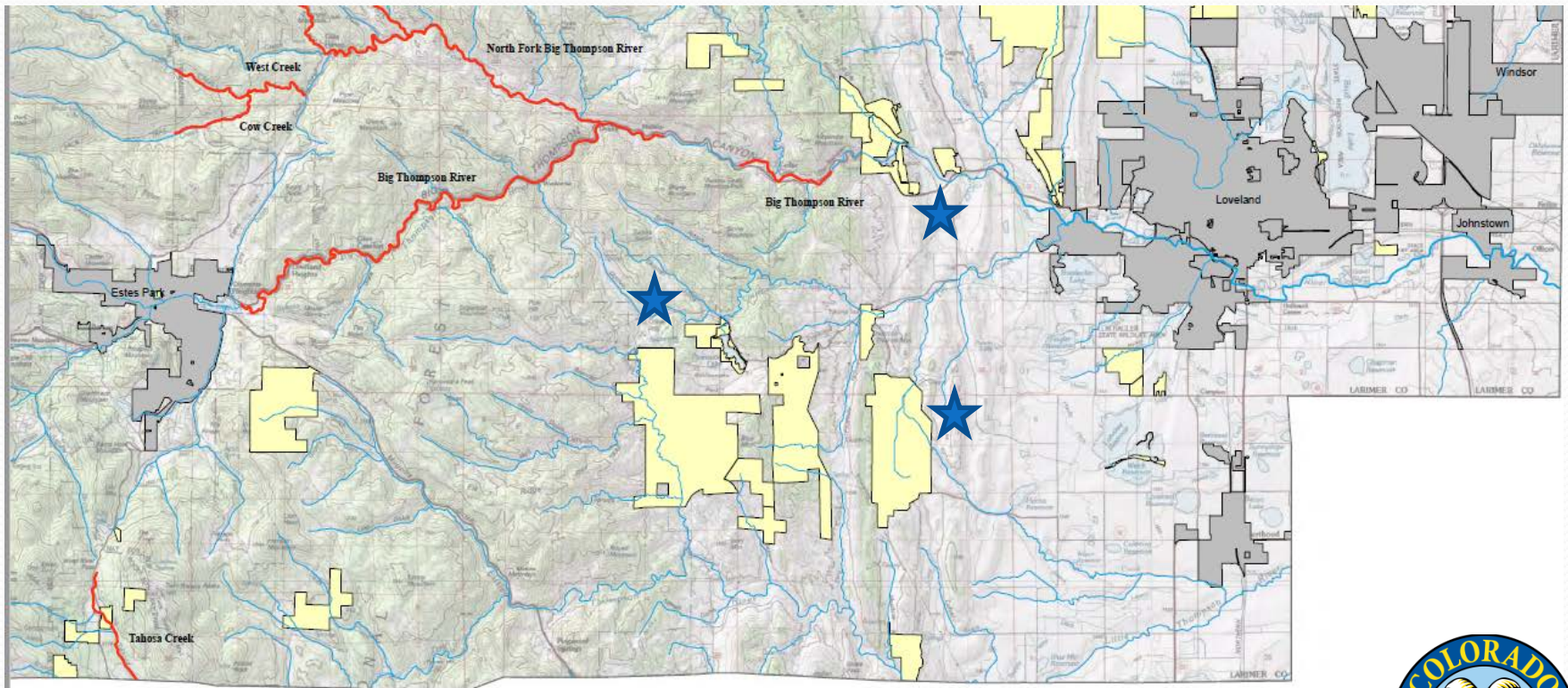
2018 ISF Recommendations – Water Division One: Larimer County

Larimer County (Map 3):

- N. Fk. of Little Thompson and it's tributaries from USFS through the Blue Mtn Conservation Easement to the confluence with the little Thompson.
- Big Thompson and Sulzer Gulch from Sylvan Dale Conservation Easement into Loveland.
- Spring Gulch Tributary and Headwatres of Little Thompson River to their confluence (all on Hermit Park open space and Meadowdale CE)
- Unnamed Creek through Chimney Hollow Open Space.



2018 ISF Recommendations – Water Division One: Larimer County (Map 3)



2018 ISF Recommendations – Water Division One: Park County (BOCC and Park County ABE):

Greenback cutthroat trout and boreal toad streams and lakes

- Duck Creek (Lower Square Top Lake to Geneva Creek)
- Platte Gulch (Headwaters to M Fk. South Platte River)
- Indian Creek (Headwaters to Lost Creek)
- McCurdy Creek (Headwaters to Lost Creek)
- Presented at 2016 workshop – Flow quantification work continues



2018 ISF Recommendations – Water Division Two

Apishapa River Basin

- Baker Creek (Headwaters to USFS Boundary)
- Bonnett Creek (Headwaters to USFS Boundary)
- Presented at prior workshops – Flow quantification work continues



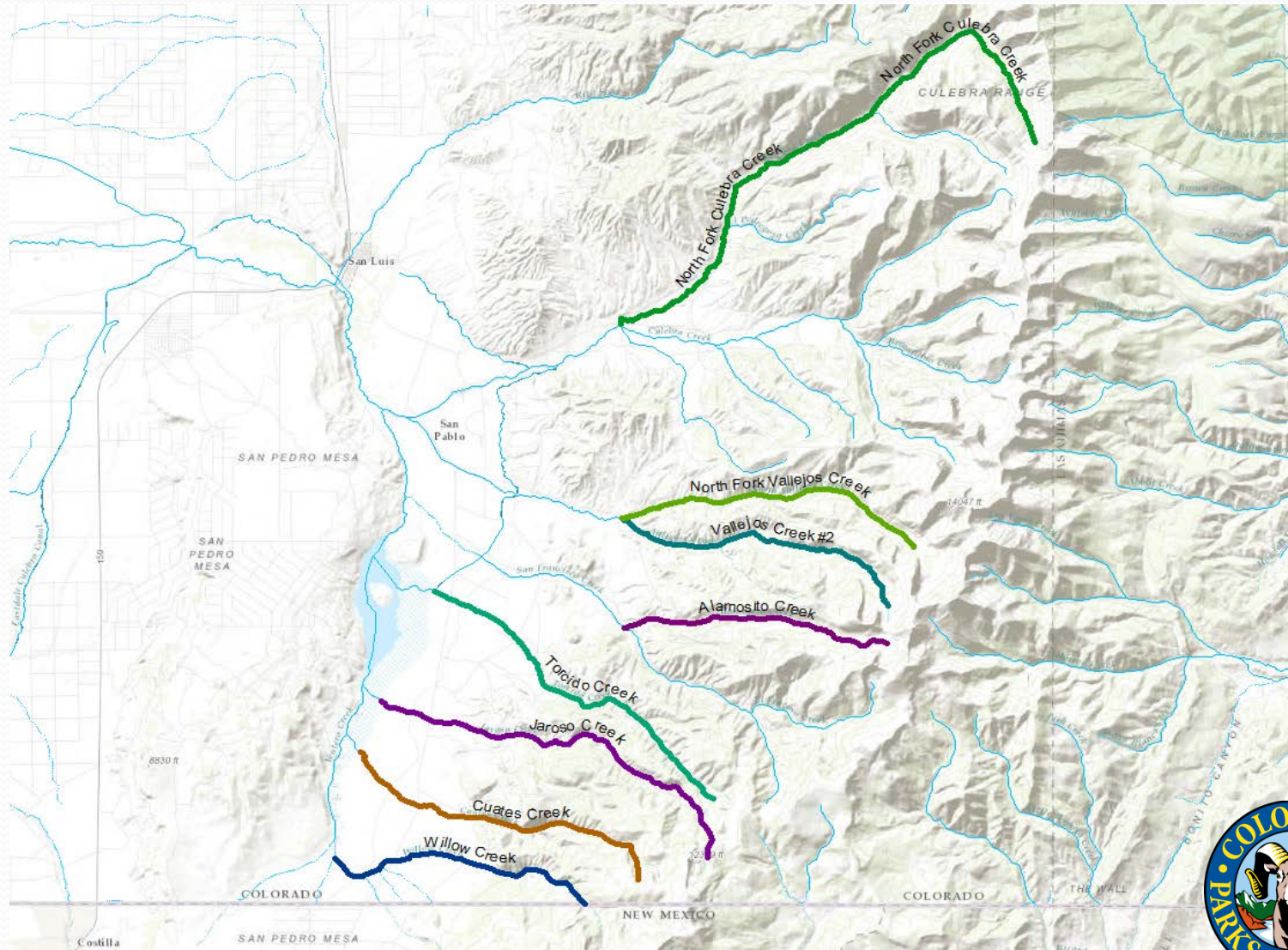
2018 ISF Recommendations – Water Division Three:

Rio Grande Basin (Rio Grande cutthroat habitat)

- Torcido Creek (Headwaters to Sanchez Reservoir)
- Jaroso Creek (Headwaters to Sanchez Reservoir)
- Willow Creek (New Mexico border to Ventero Creek)
- Alamosito Creek (Headwaters to San Fransisco Creek)
- Vallejos Creek #2 (Headwaters to confluence with N. Fk. Vallejos Creek)
- N. Fk. Vallejos Creek (Headwaters to confluence with Vallejos Creek #2)
- Cuates Creek (Headwaters to Sanchez Reservoir)
- N. Fk. Culebra Creek (Headwaters to confluence with Vallejos Creek)



2018 ISF Recommendations – Water Division Three:



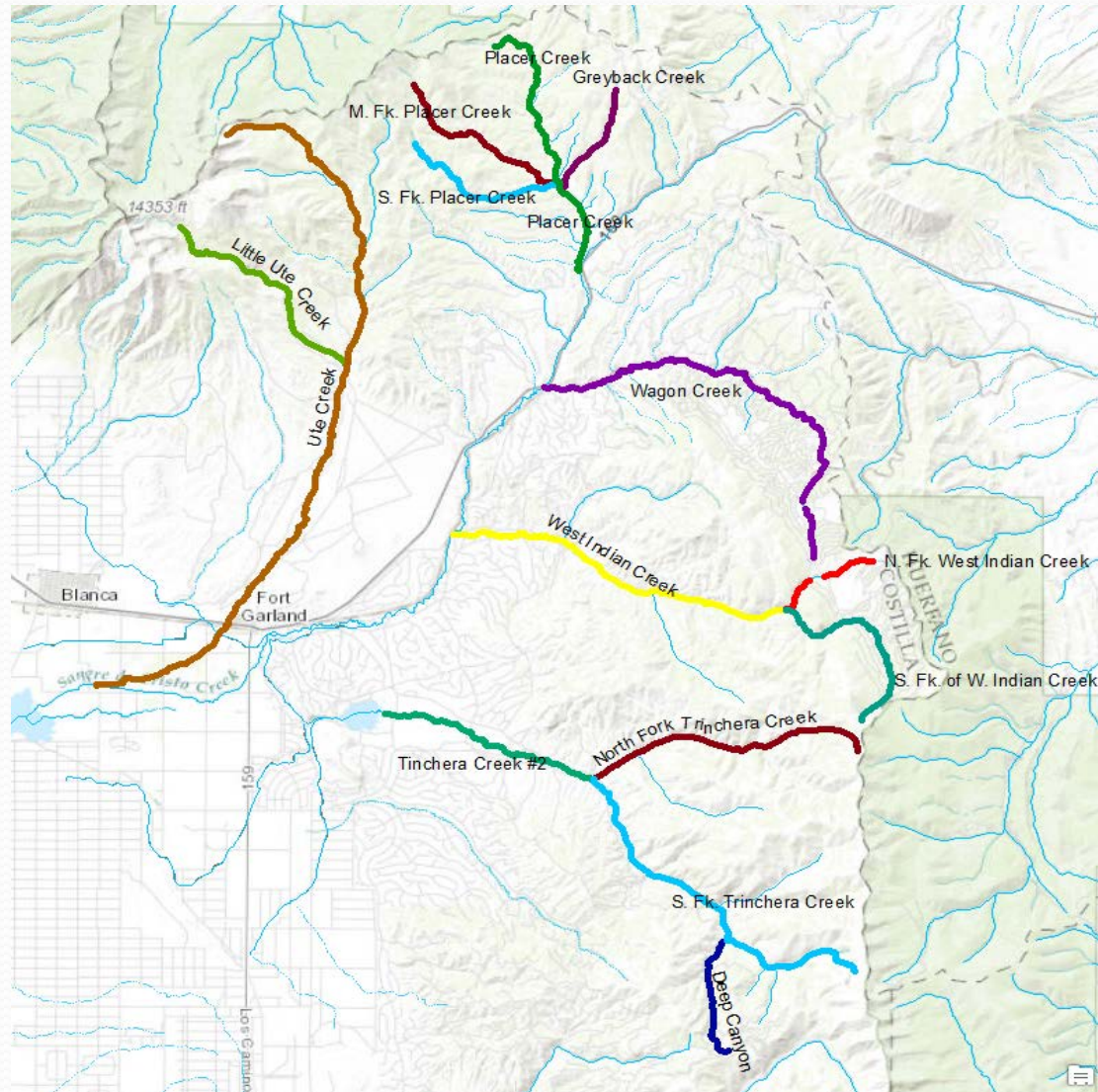
2018 ISF Recommendations – Water Division Three:

Rio Grande Basin (Rio Grande cutthroat habitat)

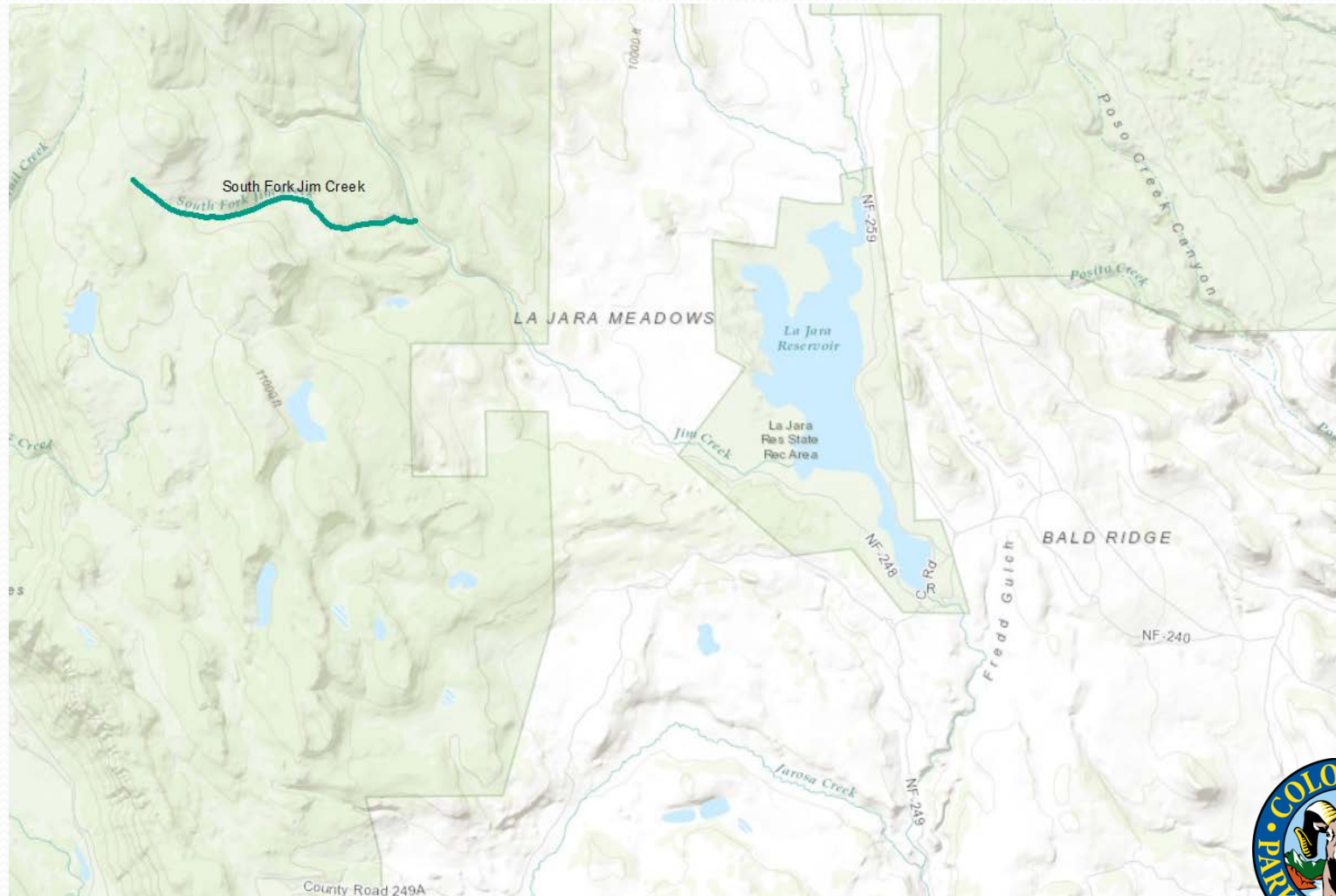
- Trinchera Creek #2 (N. Fk. and S. Fk. confluence to Mountain Home Reservoir)
- N. Fk. Trinchera Creek (Headwaters to confluence with S. Fk. Trinchera Creek)
- S. Fk. Trinchera Creek (Headwaters to confluence with N. Fk. Trinchera Creek)
- West Indian Creek (N. Fk. and S. Fk. confluence to Sangre de Cristo Creek)
- N. Fk. West Indian Creek (Headwaters to confluence with S. Fk. of West Indian Creek)
- S. Fk. West Indian Creek (Headwaters to confluence with N. Fk. of West Indian Creek)
- Ute Creek (Headwaters to Sangre De Cristo Creek)
- Little Ute Creek (Headwaters to confluence with Ute Creek)
- Placer Creek (Headwaters to Sangre de Cristo Creek)
- Middle Fk. Placer Creek (Headwaters to confluence with Placer Creek)
- S. Fk. Placer Creek (Headwaters to Placer Creek)
- Greyback Creek (Headwaters to Placer Creek)



2018 ISF Recommendations – Water Division Three:



2018 ISF Recommendations – Water Division Three: S. Fk. Jim Creek (Rio Grande cutthroat)



2018 ISF Recommendations – Water Division Four

Gunnison River Basin

- Little Cimarron River – Multiple Segments (McKinley Ditch Acquisition)
 - Butte Ditch to Confluence with Cimarron River
 - Change case pending – ISF amounts TBD

Uncompahgre River Basin

- Cow Creek – Multiple Segments
 - USFS Boundary to Confluence with Uncompahgre River
 - (80/21)
- Kelso Creek
 - Headwaters to Confluence/POD/Administrative Boundary/natural environment (cutthroat trout) transition

Presented at prior workshops – Flow quantification work continues



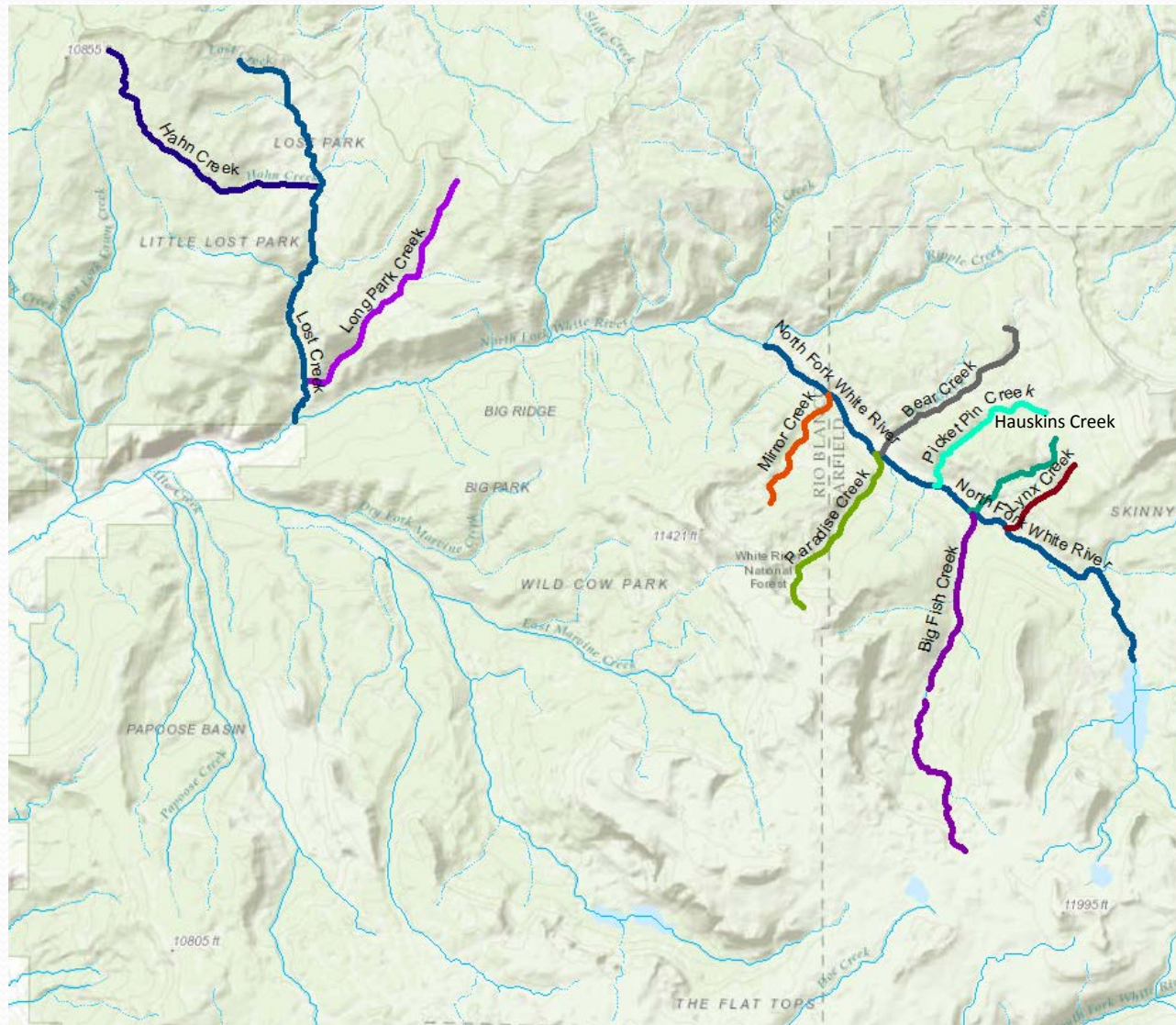
2018 ISF Recommendations – Water Division Five/Six:

N. Fk. White River Basin:

- N. Fk. White River (Wilderness boundary to Ripple Creek)
- Bear Creek (Headwaters to N. Fk. White River)
- Picket Pin Creek (Headwaters to N. Fk. White River)
- Hauskins Creek (Headwaters to N. Fk. White River)
- Lynx Creek (Headwaters to N. Fk. of White River)
- Mirror Creek (Headwaters to N. Fk. White River)
- Paradise Creek (Headwaters to N. Fk. White River)
- Big Fish Creek (Two Reaches):
 - Upper Reach- Headwaters to Big Fish Lake
 - Lower Reach- Big Fish Lake to N. Fk of White River
- Hahn Creek (Headwaters to Lost Creek)
 - CRCT Present
- Long Park Creek (Headwaters to Lost Creek)
- Lost Creek (Headwaters to N. Fk. White River)



2018 ISF Recommendations – Water Division Five/Six:



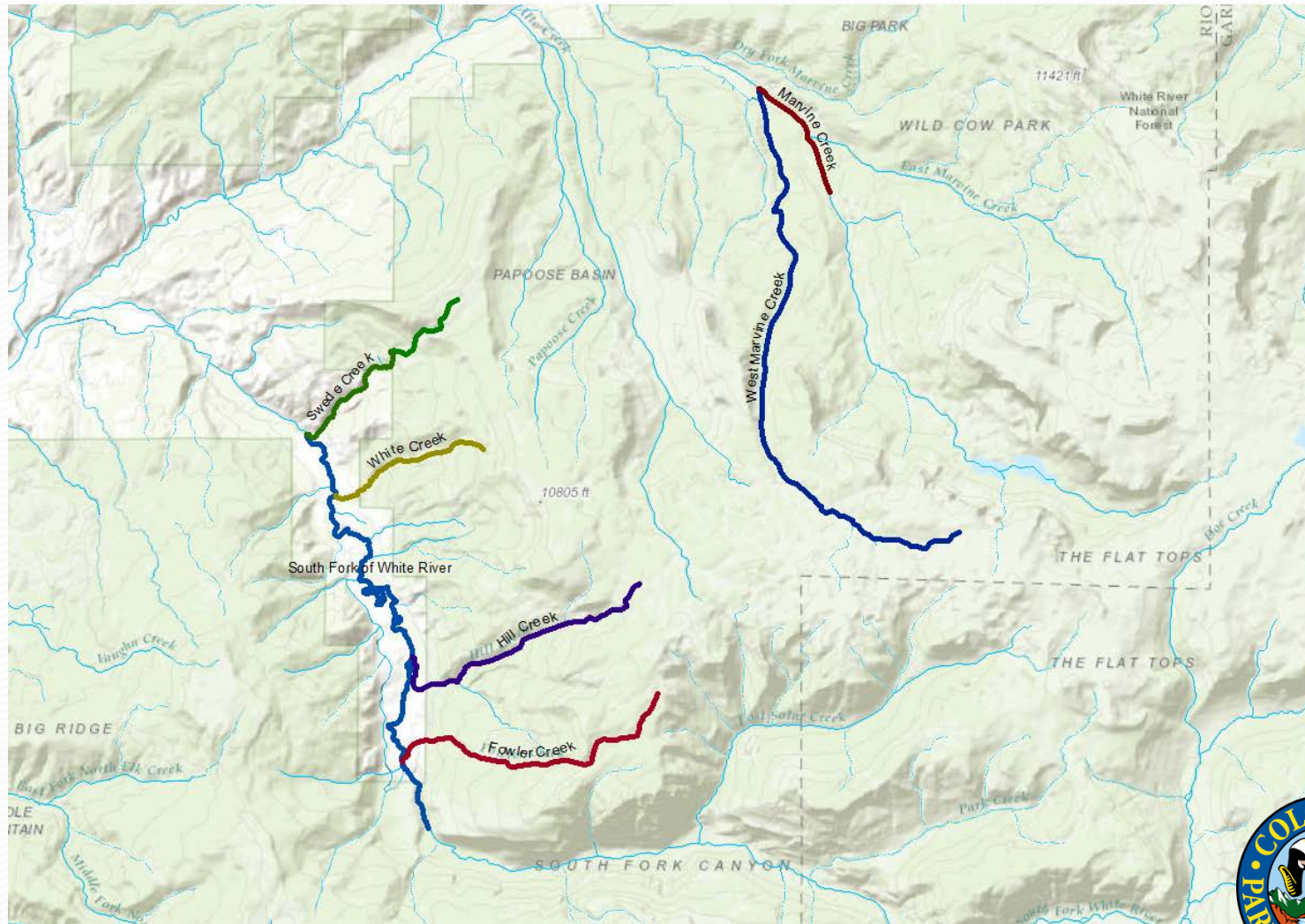
2018 ISF Recommendations – Water Division Five/Six:

S. Fk. White River Basin:

- S. Fk. White River (Wilderness boundary to Swede Creek)
- White Creek (Headwaters to S. Fk. White River)
- Fowler Creek (Headwaters to S. Fk. White River)
- Hill Creek (Headwaters to S. Fk. White River)
- Marvine Creek (Wilderness boundary to confluence with W. Marvine Creek)
- W. Marvine Creek (Headwaters to confluence with Marvine Creek)



2018 ISF Recommendations – Water Division Five/Six:



New and On-going Data Statewide Collection Efforts by Colorado Parks and Wildlife



Water Division One – Cache la Poudre and Big Thompson River Basins – Continued Data Collection Efforts:

- Cache la Poudre River
 - Through the City of Fort Collins
 - Joint Effort with the City of Fort Collins and Stakeholder Groups
 - From prior ISF Workshops

Park County – Other important hydrologic features: Investigations of Fens and other Park County playa lakes for possible inclusion under NLL Program

- In cooperation with USFS, TNC, CUSP, CSU, CSM and other Stakeholders
- High Creek Fen and others
- From prior ISF Workshops



Water Division Two – Beaver Creek Basin

- Beaver Creek (below Skaguay Reservoir – Beaver Creek SWA)
- West Beaver Creek (Headwaters Segment)
- East Beaver Creek (Headwaters Segment)



2018 ISF Recommendations - Water Division Seven*:

Upper Dolores River Basin:

- Horse Creek (Headwaters to Dolores River)
- Stoner Creek (Headwaters to Dolores River)
- Spring Creek (Headwaters to Stoner Creek)
- Little Taylor Creek (Headwaters to Taylor Creek)
- Rough Canyon (Headwaters to Roaring Forks Creek)

Animas River Basin:

- Cascade Creek (Headwaters to Animas River)
- Engine Creek (Headwaters to Cascade Creek)
- Grasshopper Creek (Headwaters to Animas River)
- E. Fk. Hermosa Creek (Headwaters to Hermosa Creek)

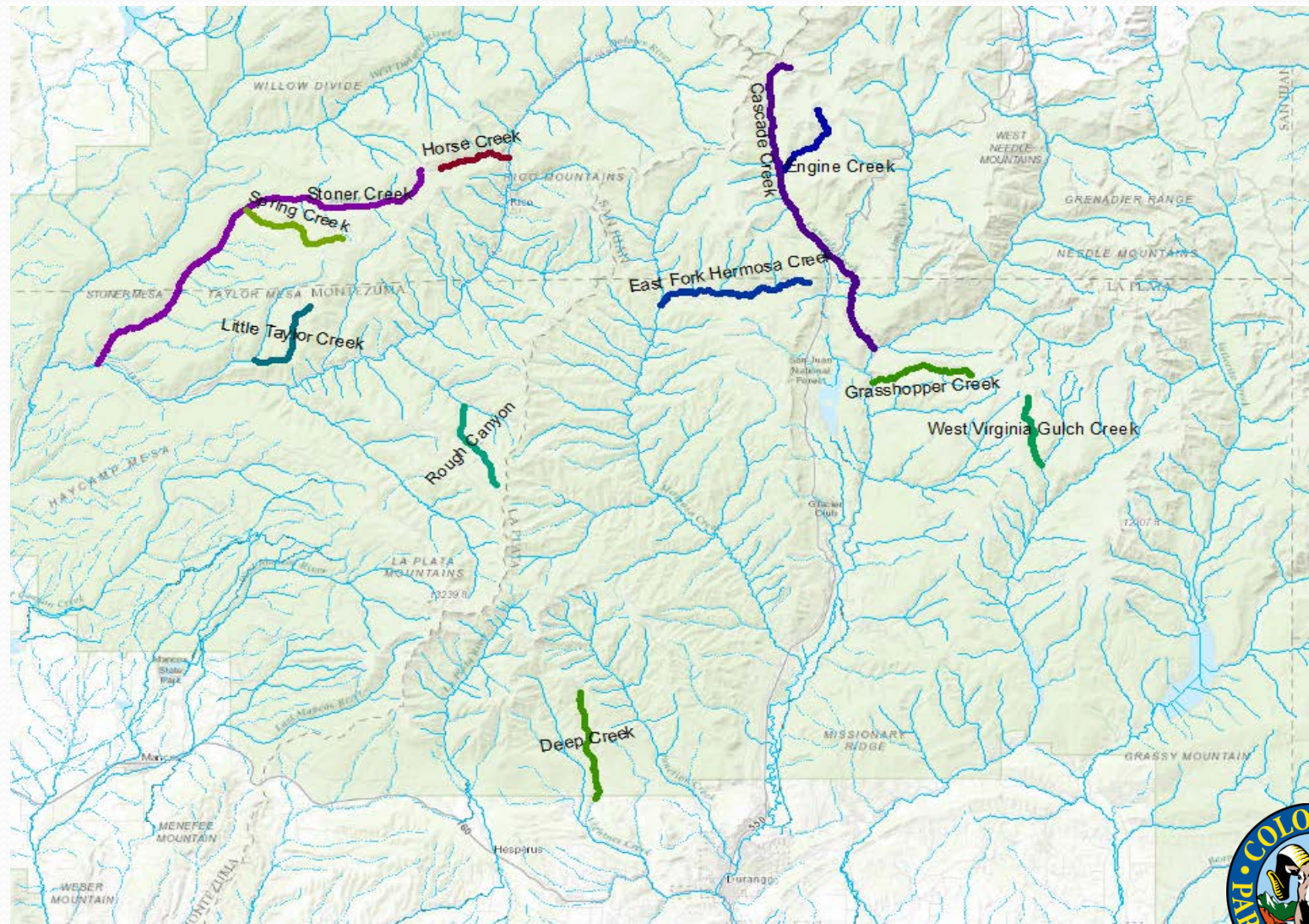
Florida River Basin:

- W. Virginia Gulch Creek (Headwaters to Virginia Gulch)

* = From 2015 ISF Workshop and continuation of joint efforts between CPW and federal agencies – CRN habitat protection efforts



2018 ISF Recommendations – Water Division Seven:



2018 ISF Recommendations - Water Division Seven*:

Piedra River Basin:

- Falls Creek (Headwaters to Weminuche Creek)
- Shaw Creek (Headwaters to Weminuche Creek)
- Sand Creek (Headwaters to Piedra River)
- Coldwater Creek (Headwaters to First Fk. Piedra River)

San Juan River Basin:

- Beaver Creek (Headwaters to W. Fk. San Juan River)
- Elk Creek (Headwaters to Beaver Creek)
- Coal Creek (Headwaters to San Juan River)
- Fourmile Creek (Headwaters to Wilderness Boundary)
- Rito Blanco (Headwaters to Rio Blanco)
- Fish Creek (Headwaters to Rito Blanco)

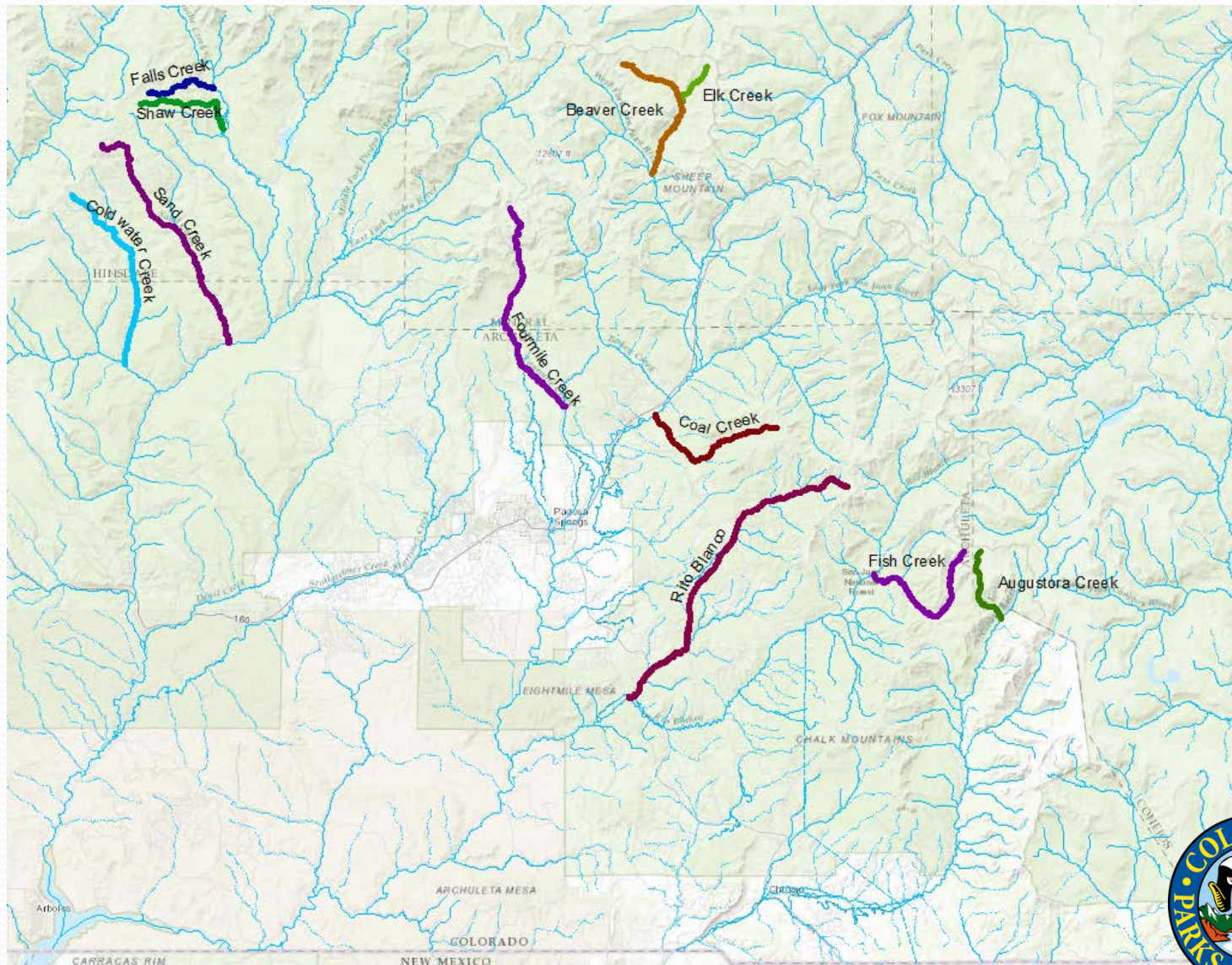
Navajo River Basin:

- Augustora Creek (Headwaters to Navajo River)

* = From 2015 ISF Workshop and continuation of joint efforts between CPW and federal agencies – CRN habitat protection efforts



2018 ISF Recommendations – Water Division Seven:



Other Future Quantification Efforts (2017 and beyond)

- Water Division Two:
 - Cucharas River Basin
 - Apishapa River Basin
 - Purgatoire River Basin
- Water Division Three:
 - Chama River Basin
 - Rio Grande cutthroat habitat (west side of SLV)
- Water Division Five:
 - Lower Roaring Fork River (Gold Medal)
- Water Division Six:
 - Yampa River CRN Habitat (Williams Fork and Little Snake headwaters.
- Water Division Seven:
 - Upper Navajo River Basin
- All other streams previously listed at prior ISF Workshops



Questions/Comments/Discussion

Jay W Skinner
CPW ISF Program Specialist
303-291-7260
jay.skinner@state.co.us

