

Water Supply Reserve Account – Grant and Loan Program
Water Activity Summary Sheet
September 21-22, 2016
Agenda Item 19(m)

Applicant & Fiscal Agent: Trout Unlimited

Water Activity Name: San Luis Valley Wetland Wildlife Conservation Assessment

Water Activity Purpose: Needs Assessment

County: All within the San Luis Valley

Water Source: Rio Grande & tributaries

Amount Requested/Source of Funds: \$39,000 Rio Grande Basin Account

Matching Funds: Applicant/3rd Party Match: \$45,000 = 53% of the total project cash amount of \$84,000
(refer to *Funding Summary/Matching Funds* section below)

Staff Recommendation:
Staff recommends approval of up to \$39,000 from the Rio Grande Basin Account to help fund the project titled: San Luis Valley Wetland Wildlife Conservation Assessment.

Water Activity Summary: This project addresses multiple goals including needs assessment and non-consumptive purposes. Task1 (Assessment – see Exhibit A) will provide natural resource agencies with a framework to determine how limited water resources (non-consumptive uses) may be more efficiently and effectively utilized (within adjudication) on public lands by agencies and organizations. A compilation of historic and current information related to wetland extent, water use, and wildlife use does not currently exist and will be a key component for setting future conservation goals among agencies. This information also will help land trusts and other entities with willing landowners seeking conservation easements to more accurately determine priorities and conservation values.

Objectives

- Assess historic versus current wetland/riparian and land use changes since the 1870s.
- Identify priority species and their limiting resources across natural resource agencies.
- Identify surface and groundwater resources for each land management agency.
- Develop conservation goals and objectives along with a framework for future cooperative efforts to manage and monitor water and habitats on public lands across the SLV.
- Develop priority habitat conservation goals and potential water and wetland infrastructure projects.

Discussion: The Assessment and prioritized project will meet the following Rio Grande Basin Implementation Plan Goals (RGBIP):

1. Protect, preserve, and/or restore the sustainability of the Rio Grande Basin watersheds by focusing on watershed health and ecosystem function.

2. Protect and preserve the doctrine of prior appropriation and vested water rights, and fully utilize Colorado's compact entitlements as specified under the Rio Grande and Costilla Creek Compacts.
3. Sustain the confined and unconfined aquifers in accordance with Senate Bill 04-222 and operate within the State Engineer's new Rules and Regulations for the SLV.
4. Operate, maintain, rehabilitate, and create necessary infrastructure to meet the Basin's long-term water needs, including storage.
6. Support the development of projects and methods that have multiple benefits for agricultural, municipal and industrial, and environmental and recreational water needs.
10. Promote water management and administrative practices that are adaptive, flexible, and responsive to optimize multiple benefits.
11. Protect, preserve, and enhance terrestrial and aquatic wildlife habitats throughout the basin.
12. Conserve restore, and maintain wetlands and riparian areas for the benefit of a healthy watershed.
13. Work to sustain active river flows throughout the year in cooperation with water users and administrators to restore and sustain ecological function of the rivers and floodplain habitats within the context of exciting water rights and compact obligations.
14. Maintain and enhance water dependent recreational activities.

Issues/Additional Needs: No issues or additional needs have been identified.

Threshold and Evaluation Criteria: The application meets all four Threshold Criteria.

Tier 1-3 Evaluation Criteria: n/a

Funding Summary/Matching Funds:

<u>Funding Source</u>	<u>Cash</u>	<u>In-kind</u>	<u>Total</u>
SLV Conservation Connection Initiative	\$42,000	\$0	\$42,000
Bird Conservancy of the Rockies	\$3,000	\$0	\$3,000
CPW, BLM, USFWS, NRCS, NPS	\$0	\$144,000	\$144,000
Subtotal Matching Funds	\$45,000	\$144,000	\$189,000
WSRA Rio Grande Basin Account	\$39,000	n/a	\$39,000
Total Project Costs	\$84,000	\$144,000	\$228,000

CWCB Project Manager: Craig Godbout

All products, data and information developed as a result of this grant must be provided to the CWCB in hard copy and electronic format as part of the project documentation. This information will in turn be made widely available to Basin Roundtables and the general public and will help promote the development of a common technical platform. In accordance with the revised WSRA Criteria and Guidelines, staff would like to highlight additional reporting and final deliverable requirements. The specific requirements are provided below.

Reporting: The applicant shall provide the CWCB a progress report every 6 months, beginning from the date of the executed contract. The progress report shall describe the completion or partial completion of the tasks identified in the scope of work including a description of any major issues that have occurred and any corrective action taken to address these issues.

Final Deliverable: At completion of the project, the applicant shall provide the CWCB a final report that summarizes the project and documents how the project was completed. This report may contain photographs, summaries of meetings and engineering reports/designs.

Engineering: All engineering work (as defined in the Engineers Practice Act (§12-25-102(10) C.R.S.)) performed under this grant shall be performed by or under the responsible charge of professional engineer licensed by the State of Colorado to practice Engineering.

July 13, 2016

Craig Godbout - WSRA Application
Colorado Water Conservation Board
1313 Sherman St., Room 721
Denver, CO 80203
Craig.godbout@state.co.us

Re: WSRA Application for SLV Trout Unlimited Chapter – ‘SLV Wetland and Wildlife Assessment’

Dear Mr. Godbout:

On behalf of the Rio Grande Basin Roundtable (Roundtable), please accept this letter of support for the San Luis Valley Wetland and Wildlife Assessment (Assessment) sponsored by the San Luis Valley Trout Unlimited Chapter. The Water Supply Reserve Account Application for the Assessment was evaluated by the Roundtable and was approved by voting members at the June 14, 2016 Roundtable meeting. The Assessment received support from all of the Roundtable members and therefore supports this project's application for WSRA funding.

The Roundtable recognizes that the Assessment will be a valuable tool that will inform future conservation decision-making and project development in the Rio Grande Basin on public lands and potentially private lands seeking conservation easements or enhancement projects. The Assessment will document changes in wetland and riparian extent across the San Luis Valley (SLV), provide goals and priorities for natural resource agencies, produce factsheets and threat matrices for 35 pre-determined priority species, develop a prioritization tool for agencies and other conservation organizations, identify how collaborative efforts among agencies may work in the future to meet water needs, recommend future water and wetland delivery projects, and may be a template for other basins to work cooperatively together to meet resource needs. The Assessment and prioritized projects will meet the following Rio Grande Basin Implementation Plan Goals (RGBIP):

1. Protect, preserve, and/or restore the sustainability of the Rio Grande Basin watersheds by focusing on watershed health and ecosystem function.
2. Protect and preserve the doctrine of prior appropriation and vested water rights, and fully utilize Colorado's compact entitlements as specified under the Rio Grande and Costilla Creek Compacts.
3. Sustain the confined and unconfined aquifers in accordance with Senate Bill 04-222 and operate within the State Engineer's new Rules and Regulations for the SLV.
4. Operate, maintain, rehabilitate, and create necessary infrastructure to meet the Basin's long-term water needs, including storage.
6. Support the development of projects and methods that have multiple benefits for

- agricultural, municipal and industrial, and environmental and recreational water needs.
10. Promote water management and administrative practices that are adaptive, flexible, and responsive to optimize multiple benefits.
 11. Protect, preserve, and enhance terrestrial and aquatic wildlife habitats throughout the basin.
 12. Conserve, restore, and maintain wetlands and riparian areas for the benefit of a healthy watershed.
 13. Work to sustain active river flows throughout the year in cooperation with water users and administrators to restore and sustain ecological function of the rivers and floodplain habitats within the context of existing water rights and compact obligations.
 14. Maintain and enhance water dependent recreational activities.

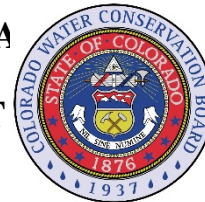
In addition to meeting many of the RGBIP goals, the Assessment aligns with Colorado Statute 37-75-104 (2)(c) as it relates to 'develop[ing] a basin-wide non-consumptive water supply needs assessment, [will] propose projects or methods, both structural and nonstructural,...seeks the input and advice of affected local governments, water providers, and other interested stakeholders and persons in establishing its needs assessment, and shall propose projects or methods for meeting those needs.'

Thank you for your consideration of this application.

Sincerely,

A handwritten signature in blue ink, appearing to read "N. Coombs".

Nathan Coombs, Chair
Rio Grande Basin Roundtable



WATER SUPPLY RESERVE ACCOUNT
APPLICATION FORM

Today's Date: June 3, 2016

San Luis Valley Wetland Wildlife Conservation
Assessment

Name of Water Activity/Project

San Luis Valley Trout Unlimited Chapter

Name of Applicant

Rio Grande Basin
Roundtable

Amount from Statewide
Account:

\$0.00

Amount from Basin
Account(s):

\$39,000.00

Approving Basin Roundtable(s)
(If multiple basins specify amounts in parentheses.)

Total WSRA Funds
Requested:

\$39,000.00

FEIN:74-2047348

Application Content

Application Instructions	page 2
Part I – Description of the Applicant	page 3
Part II – Description of the Water Activity	page 5
Part III – Threshold and Evaluation Criteria	page 7
Part IV – Required Supporting Material	
Water Rights, Availability, and Sustainability	page 10
Related Studies	page 10
Signature Page	page 12

Required Exhibits

- Statement of Work, Budget, and Schedule
- Project Map
- As Needed (i.e. letters of support, photos, maps, etc.)

Appendices – Reference Material

- Program Information
- Insurance Requirements
- WSRA Standard Contract Information (Required for Projects Over \$100,000)
- W-9 Form (Required for All Projects Prior to Contracting)

Water Supply Reserve Account – Application Form

Revised October 2013

Instructions

To receive funding from the Water Supply Reserve Account (WSRA), a proposed water activity must be approved by the local Basin Roundtable **AND** the Colorado Water Conservation Board (CWCB). The process for Basin Roundtable consideration and approval is outlined in materials in Appendix 1.

Once approved by the local Basin Roundtable, the applicant should submit this application **with a detailed statement of work including budget and schedule as Exhibit A** to CWCB staff by the application deadline.

WSRA applications are due with the roundtable letter of support 60 calendar days prior to the bi-monthly Board meeting at which it will be considered. Board meetings are held in January, March, May, July, September, and November. Meeting details, including scheduled dates, agendas, etc. are posted on the CWCB website at: <http://cwcb.state.co.us> Applications to the WSRA Basin Account are considered at every board meeting, while applications to the WSRA Statewide Account are only considered at the March and September board meetings.

When completing this application, the applicant should refer to the WSRA Criteria and Guidelines available at: <http://cwcb.state.co.us/LoansGrants/water-supply-reserve-account-grants/Documents/WSRACriteriaGuidelines.pdf>. In addition, the applicant should also refer to the [Supplemental Scoring Matrix](#) applied to Evaluation Criteria Tiers 1-3 for Statewide Account requests .

The application, statement of work, budget, and schedule **must be submitted in electronic format** (Microsoft Word or text-enabled PDF are preferred) and can be emailed or mailed on a disk to:

Craig Godbout - WSRA Application
Colorado Water Conservation Board
1313 Sherman St., Room 721
Denver, CO 80203
Craig.godbout@state.co.us

If you have questions or need additional assistance, please contact Craig Godbout at: 303-866-3441 x3210 or craig.godbout@state.co.us.

Water Supply Reserve Account – Application Form

Revised October 2013

Part I. - Description of the Applicant (Project Sponsor or Owner);

1.	Applicant	San Luis Valley Chapter of Trout Unlimited			
	Mailing address:	P.O. Box 503 Alamosa, CO 81101			
	FEIN #:	74-2047348			
	Primary	Mark Seaton	Position/Title:	Chapter President	
	Email:	seaton@fairpoint.net			
	Phone	Cell	719-588-7678	Offic	
	Alternate	Cary Aloia	Position/Title	Wetland Dynamics, LLC – Partner/Biologist	
	Email	Cary_Aloia@msn.com			
	Phone	Cell	719-850-2562	Office:	

2. Eligible entities for WSRA funds include the following. What type of entity is the Applicant?

- ☐ Public (Government) – municipalities, enterprises, counties, and State of Colorado agencies. Federal agencies are encouraged to work with local entities and the local entity should be the grant recipient. Federal agencies are eligible, but only if they can make a compelling case for why a local partner cannot be the grant recipient.
- ☐ Public (Districts) – authorities, Title 32/special districts, (conservancy, conservation, and irrigation districts), and water activity enterprises.
- ☐ Private Incorporated – mutual ditch companies, homeowners associations, corporations.
- ☐ Private individuals, partnerships, and sole proprietors are eligible for funding from the Basin Accounts but not for funding from the Statewide Account.
- ☒ Non-governmental organizations – broadly defined as any organization that is not part of the government.

Water Supply Reserve Account – Application Form

Revised October 2013

3. Provide a brief description of your organization

The San Luis Valley Trout Unlimited Chapter (SLVTU) will serve as the Fiscal Agent for this Project. SLVTU was founded in 1978 and the first set of bylaws approved on March 22, 1978. For the past 5 years (2011 – 2015) the chapter has an average yearly revenue of \$13,775 primarily from proceeds from an annual fundraiser auction held each April and from smaller amounts of revenue obtained from the annual Conejos Superfly contest, Rio Grande River map sales and member donations. For the same period the annual yearly expenses totaled \$10,731 which includes donations to the SLV Regional Science Fair, Casting for Recovery and monies used for matching funds for grant requests from sources such as the State of Colorado's Fishing is Fun program. Average yearly assets from 2011 – 2015 totaled \$45,772. This financial information was obtained from yearly financial reports required by and submitted to National Trout Unlimited.

Presently the SLVTU has 139 members including 10 members which serve on the Board of Directors. The chapter holds 9 monthly meetings from September to May each year with an average attendance of 15 persons. The chapter is responsible for a spring and fall roadside cleanup each year along a 3 mile section of Highway 149 north of South Fork, Colorado. The cleanup days also serve as a chapter get together and picnic. Once yearly the chapter conducts a day long river cleanup along a stretch of the Rio Grande River and assists with the annual Beaver Creek Youth Camp and SLV Water Festival. The past 5 years (2011 – 2015) the chapter averaged 510 volunteer hours yearly.

4. If the Contracting Entity is different than the Applicant (Project Sponsor or Owner) please describe the Contracting Entity here.

SLV TU is the Applicant with CWCB and Wetland Dynamics, LLC will be contracted by SLV TU to perform the work.

Wetland Dynamics, LLC is a small business owned by women in the San Luis Valley (SLV) of Colorado providing ecosystem management, monitoring and technical services. Since 1998, staff have over 25 years of combined experience working in the SLV, throughout Colorado, and the US. We strive to provide the highest quality professional biological services to the many agencies, landowners, conservation organizations, and other partners working to preserve and conserve wetlands, riparian areas, and upland ecosystems. Wetland Dynamics provides three main services in the SLV:

- Planning, development, and implementation of management and monitoring plans,
- Threatened and endangered species monitoring,
- Outreach and education.

Staff have worked on a variety of projects over the years, gaining the type of experience necessary to effectively coordinate and develop this Assessment document. This experience includes development of Hydrogeomorphic reports for 10 different USFWS National Wildlife Refuges across the United States, assisting the IWJV with their 2013 Implementation Plan by providing overviews of landscape conservation for the IWJV's 20 priority landscapes, completing 16 Baseline Inventory Reports and developing 5 Year Management Plans for Wetland Reserve Program NRCS Conservation Easements in the SLV, provided management and monitoring on state wildlife areas in the SLV for CPW for 8 years,

Water Supply Reserve Account – Application Form

Revised October 2013

administering 7 different wetland/riparian enhancement projects in the SLV, active with the SLV Wetland Focus Area and serving as Chair of the Committee, 17 years of work associated with the population of Gunnison Sage-grouse (GUSG) at Poncha Pass in Saguache County including helping write the Local Conservation Plan, serving as the Local GUSG Working Group Coordinator, and editor of the 2005 Rangewide Conservation Plan for Gunnison Sage-grouse, a comprehensive document for conservation and recovery of Gunnison Sage-grouse, across the species' range.

Wetland Dynamics, LLC is the only contracting entity working on the development of the Assessment. However, this Assessment will be completed with in-kind match (staff personnel time) with the U.S. Fish and Wildlife Service, Bureau of Land Management, Colorado Parks and Wildlife, National Park Service, Natural Resource Conservation Service, U.S. Forest Service, and Intermountain West Joint Venture.

5. Successful applicants will have to execute a contract with the CWCB prior to beginning work on the portion of the project funded by the WSRA grant. In order to expedite the contracting process the CWCB has established a standard contract with provisions the applicant must adhere to. A link to this standard contract is included in Appendix 3. Please review this contract and check the appropriate box.

☒ The Applicant will be able to contract with the CWCB using the Standard Contract

☐ The Applicant has reviewed the standard contract and has some questions/issues/concerns. Please be aware that any deviation from the standard contract could result in a significant delay between grant approval and the funds being available.

6. The Tax Payer Bill of Rights (TABOR) may limit the amount of grant money an entity can receive. Please describe any relevant TABOR issues that may affect the applicant.

None

Part II. - Description of the Water Activity/Project

1. What is the primary purpose of this grant application? (Please check only one)

☐ Nonconsumptive (Environmental or Recreational)

☐ Agricultural

☐ Municipal/Industrial

☒ Needs Assessment

☐ Education

☐ Other

Water Supply Reserve Account – Application Form

Revised October 2013

2. If you feel this project addresses multiple purposes please explain.

This project addresses multiple goals including needs assessment and non-consumptive purposes. Task 1 (Assessment – see Exhibit A) will provide natural resource agencies with a framework to determine how limited water resources (non-consumptive uses) may be more efficiently and effectively utilized (within adjudication) on public lands by agencies and organizations. A compilation of historic and current information related to wetland extent, water use, and wildlife use does not currently exist and will be a key component for setting future conservation goals among agencies. This information also will help land trusts and other entities with willing landowners seeking conservation easements to more accurately determine priorities and conservation values.

3. Is this project primarily a study or implementation of a water activity/project? (Please check only one)

☒ Study ☐ Implementation

4. To catalog measurable results achieved with WSRA funds can you provide any of the following numbers?

<input type="text"/>	New Storage Created (acre-feet)
<input type="text"/>	New Annual Water Supplies Developed, Consumptive or Non-consumptive (acre-feet)
<input type="text"/>	Existing Storage Preserved or Enhanced (acre-feet)
<input type="text"/>	Length of Stream Restored or Protected (linear feet)
<input type="text"/>	Length of Pipe/Canal Built or Improved (linear feet)
<input type="text"/>	Efficiency Savings (acre-feet/year OR dollars/year – circle one)
<input type="text"/>	Area of Restored or Preserved Habitat (acres)
<input checked="" type="checkbox"/>	Other -- Explain: Wetland/Wildlife Needs Assessment for Natural Resource Agencies

5. To help us map WSRA projects please include a map (Exhibit B) and provide the general coordinates below:

Latitude Longitude:

Water Supply Reserve Account – Application Form

Revised October 2013

6. Please provide an overview/summary of the proposed water activity (no more than one page). Include a description of the overall water activity and specifically what the WSRA funding will be used for. A full **Statement of Work** with a detailed budget and schedule is required as **Exhibit A** of this application.

The ‘SLV Wetland and Wildlife Conservation Assessment’ is a needs assessment that will fill current information gaps on public lands regarding the water resources available to provide limiting habitat for priority species. Through this process a detailed history of changes in wetlands will be compiled that will help guide management of existing resources and a direction for future water delivery and wetland restoration projects on public lands. This Assessment is a cooperative effort that will ultimately lead to the development of conservation goals for monitoring, management, and land conservation throughout the SLV for natural resource agencies and organizations. The effort involves local, regional, and state staff and support from the U.S. Fish and Wildlife Service, Bureau of Land Management, Colorado Parks and Wildlife, Natural Resource Conservation Service, U.S. Forest Service, Ducks Unlimited, Inc., Intermountain West Joint Venture (IWJV), National Park Service, and numerous other individuals and organizations dedicated to promoting cooperative partnerships to manage, monitor, and conserve habitat resources across the SLV.

Goals:

- Develop matrices and maps for all priority species with habitat, water, and threat levels.
- Identify limiting water resources by type, location, and use on public lands.
- Develop priority habitat conservation goals and potential water and wetland infrastructure projects for public lands.
- Assess, plan, and adapt programs for the conservation of habitat for endangered, threatened, and sensitive species on public lands that can also be used by other conservation entities.
- Provide information to various stakeholders about historic and current surface water changes over time.

These goals will be achieved over a two year time period working collaboratively with state and federal land management partners. Wetland Dynamics staff will coordinate efforts among these partners to compile information and will then conduct further background research resulting in the development of an Assessment. Coordination of this effort will entail effective communication among partners and a resulting document that can continue to be updated with current GIS information, climatic conditions, changes in land use over time, and changes in water resource use and limitations. The Assessment can be presented in multiple formats to a wide group of stakeholders and may be used as a template for other basins in Colorado to determine their needs and set conservation goals.

Use of Funds:

Requested funds from the Rio Grande Basin Roundtable will be used as matching funds toward the development of the ‘SLV Wetland and Wildlife Conservation Assessment’. Funds will be spent primarily as wages for Wetland Dynamics Staff, Cary Aloia and Jenny Nehring, to coordinate efforts among resource agencies, compile information, and develop the Assessment document over the course of 2 years. Coordination of this effort will involve timely meetings and other communications

Water Supply Reserve Account – Application Form

Revised October 2013

among partners and travel to meetings within the San Luis Valley. Compilation of existing information, background research, and development of the Assessment will represent the majority of time spent on this project. Upon completion, staff may travel to other locations in order to present information to the many partners involved in this project. A small portion of the funds will cover printing and office supplies associated with development and completion of the Assessment. The final Assessment document will be made available in digital form, printing of hard copies will be limited so as to cut down on paper. SLV Trout Unlimited Chapter will receive \$2,000.00 for acting as fiscal agent for grant funding through the Rio Grande Basin Roundtable.

Part III. – Threshold and Evaluation Criteria

1. Describe how the water activity meets these **Threshold Criteria**. (Detailed in Part 3 of the Water Supply Reserve Account Criteria and Guidelines.)

- a) The water activity is consistent with Section 37-75-102 Colorado Revised Statutes.¹

The activity is consistent with Section 37-75-102 Colorado Revised Statutes and those listed below.

- The Colorado Wildlife and Parks and Outdoor Recreation Statutes, Colorado Revised Statutes §§ 33-1-101 to 33-1-121, which provide that “it is the policy of the state of Colorado that the wildlife and their environment are to be protected, preserved, enhanced, and managed for the use, benefit, and enjoyment of the people of this state and its visitors.”
- The Colorado Wildlife and Parks and Outdoor Recreation Statutes, Colorado Revised Statutes §§ 33-2-101 to 33-2-106, which provide that “it is the policy of this state to manage all nongame wildlife, recognizing the private property rights of individual property owners, for human enjoyment and welfare, for scientific purposes, and to insure their perpetuation as members of ecosystems; that species or subspecies of wildlife indigenous to this state which may be found to be endangered or threatened within the state should be accorded protection in order to maintain and enhance their numbers to the extent possible; that this state should

¹ 37-75-102. Water rights - protections. (1) It is the policy of the General Assembly that the current system of allocating water within Colorado shall not be superseded, abrogated, or otherwise impaired by this article. Nothing in this article shall be interpreted to repeal or in any manner amend the existing water rights adjudication system. The General Assembly affirms the state constitution's recognition of water rights as a private usufructuary property right, and this article is not intended to restrict the ability of the holder of a water right to use or to dispose of that water right in any manner permitted under Colorado law. (2) The General Assembly affirms the protections for contractual and property rights recognized by the contract and takings protections under the state constitution and related statutes. This article shall not be implemented in any way that would diminish, impair, or cause injury to any property or contractual right created by intergovernmental agreements, contracts, stipulations among parties to water cases, terms and conditions in water decrees, or any other similar document related to the allocation or use of water. This article shall not be construed to supersede, abrogate, or cause injury to vested water rights or decreed conditional water rights. The General Assembly affirms that this article does not impair, limit, or otherwise affect the rights of persons or entities to enter into agreements, contracts, or memoranda of understanding with other persons or entities relating to the appropriation, movement, or use of water under other provisions of law.

Water Supply Reserve Account – Application Form

Revised October 2013

assist in the protection of species or subspecies of wildlife which are deemed to be endangered or threatened elsewhere.”

- The Colorado Wildlife and Parks and Outdoor Recreation Statutes, Colorado Revised Statutes §§ 33-10-101 to 33-10-114, which provide that “it is the policy of the state of Colorado that the natural, scenic, scientific, and outdoor recreation areas of this state are to be protected, preserved, enhanced, and managed for the use, benefit, and enjoyment of the people of this state and visitors of this state.”
- b) The water activity underwent an evaluation and approval process and was approved by the Basin Roundtable (BRT) and the application includes a description of the results of the BRT's evaluation and approval of the activity. At a minimum, the description must include the level of agreement reached by the roundtable, including any minority opinion(s) if there was not general agreement for the activity. The description must also include reasons why general agreement was not reached (if it was not), including who opposed the activity and why they opposed it. Note- If this information is included in the letter from the roundtable chair simply reference that letter.

Please see attached letter from the Rio Grande Basin Roundtable Chairman, Nathan Coombs, describing the support for this application from the membership.

- c) The water activity meets the provisions of Section 37-75-104(2), Colorado Revised Statutes.² The Basin Roundtable Chairs shall include in their approval letters for particular WSRA grant applications a description of how the water activity will assist in meeting the water supply needs identified in the basin roundtable's consumptive and/or non-consumptive needs assessments.

The development of the Assessment meets the provisions outlined in the provisions of Section 37-75-104(2) Colorado Revised Statutes. Specifically this project will provide a needs assessment for the basin in relation to non-consumptive water supplies, will propose projects to improve water delivery and efficiency on public lands, will be a partnership among all of the federal and state natural resource agencies and other interested stakeholders, and the information will be available to all partners and stakeholders. Please see project information contained within this application for further details and the attached letter from the Rio Grande Basin Roundtable Chairman, Nathan Coombs.

- d) Matching Requirement: For requests from the Statewide Fund, the applicants will be required to demonstrate a **25 percent** (or greater) match of the total grant request from the other sources, including by not limited to Basin Funds. A minimum match of 5% of the total grant amount shall be from Basin

² 37-75-104 (2)(c). Using data and information from the Statewide Water Supply Initiative and other appropriate sources and in cooperation with the on-going Statewide Water Supply Initiative, develop a basin-wide consumptive and nonconsumptive water supply needs assessment, conduct an analysis of available unappropriated waters within the basin, and propose projects or methods, both structural and nonstructural, for meeting those needs and utilizing those unappropriated waters where appropriate. Basin Roundtables shall actively seek the input and advice of affected local governments, water providers, and other interested stakeholders and persons in establishing its needs assessment, and shall propose projects or methods for meeting those needs. Recommendations from this assessment shall be forwarded to the Interbasin Compact Committee and other basin roundtables for analysis and consideration after the General Assembly has approved the Interbasin Compact Charter.

Water Supply Reserve Account – Application Form

Revised October 2013

funds. A minimum match of 5% of the total grant amount must come from the applicant or 3rd party sources. Sources of matching funds include but are not limited to Basin Funds, in-kind services, funding from other sources, and/or direct cash match. Past expenditures directly related to the project may be considered as matching funds if the expenditures occurred within 9 months of the date the contract or purchase order between the applicant and the State of Colorado is executed. Please describe the source(s) of matching funds. (NOTE: These matching funds should also be reflected in your Detailed Budget in **Exhibit A** of this application).

This is a large, multi-partner project with a total cost of \$228,000 that includes cash and in-kind match, please see the budget table in Exhibit A. The SLV Trout Unlimited Chapter is acting as the fiscal agent for Wetland Dynamics, LLC. The funding request for this project to the Rio Grande Basin Roundtable (Basin Account) is \$39,000.00 which is 17.1% of the overall project cost and 46% of the cash needed for the Assessment. Cash match is pending through the SLV Conservation and Connection Initiative for \$42,000.00 and through the Bird Conservancy of the Rockies for \$3,000.00.

There is one Task associated with this funding request: the Assessment document that will be developed by WD LLC working in concert with the Natural Resource Agencies in the SLV at a cost of \$228,000 (\$84K cash, \$144K in-kind). In-kind match for development of the Assessment will be extremely important as USFWS, CPW, NRCS, BLM, National Park Service will provide staff time to collaboratively develop and review the document at an approximate in-kind total of \$144,000.00 over two years.

No funds are requested from the statewide account.

2. For Applications that include a request for funds from the **Statewide Account**, describe how the water activity/project meets all applicable **Evaluation Criteria**. (Detailed in Part 3 of the Water Supply Reserve Account Criteria and Guidelines and repeated below.) Projects will be assessed on how well they meet the Evaluation Criteria. **Please attach additional pages as necessary.**

Evaluation Criteria – the following criteria will be utilized to further evaluate the merits of the water activity proposed for funding from the Statewide Account. In evaluation of proposed water activities, preference will be given to projects that meet one or more criteria from each of the three “tiers” or categories. Each “tier” is grouped in level of importance. For instance, projects that meet Tier 1 criteria will outweigh projects that only meet Tier 3 criteria. The applicant should also refer to the Supplemental Scoring Matrix applied to Evaluation Criteria Tiers 1-3 for Statewide Account requests. WSRA grant requests for projects that may qualify for loans through the CWCB loan program will receive preference in the Statewide Evaluation Criteria if the grant request is part of a CWCB loan/WSRA grant package. For these CWCB loan/WSRA grant packages, the applicant must have a CWCB loan/WSRA grant ratio of 1:1 or higher. Preference will be given to those with a higher loan/grant ratio.

Funds are requested from the Basin account only.

Part IV. – Required Supporting Material

Water Supply Reserve Account – Application Form

Revised October 2013

1. **Water Rights, Availability, and Sustainability** – This information is needed to assess the viability of the water project or activity. Please provide a description of the water supply source to be utilized, or the water body to be affected by, the water activity. This should include a description of applicable water rights, and water rights issues, and the name/location of water bodies affected by the water activity.

This project is an assessment of current water resources (delivery, availability, and sustainability) on historic and current public lands within the Rio Grande Basin up to 8,500' in elevation. No water will be utilized or affected by this project. Future projects outlined in the Assessment may be affected but will be explained/described as part of those projects.

2. Please provide a brief narrative of any related studies or permitting issues.

There are no permitting issues.

Below is a list of some of the resources that will be utilized as part of this Assessment:

1. Rio Grande Basin Implementation Plan
2. Statewide Wildlife Action Plan
3. SLV Habitat Conservation Plan (Southwestern Willow Flycatcher and Yellow-billed Cuckoo)
4. SLV Waterbird Plan
5. USFWS 2016 Comprehensive Conservation Plan
6. Monte Vista NWR HGM Report
7. Alamosa NWR HGM Report
8. Baca NWR HGM Report
9. SLV Community Wetlands Strategy
10. SLV Wetlands Focus Area Committee Action Plan 2003-2004
11. Intermountain West Joint Venture 2013 Implementation Plan
12. Intermountain West Joint Venture 1984-2015 wetland hydrology database
13. Wetland Wildlife Conservation Program Statewide Goals and Strategy
14. SLV Noxious Weed Plan – Revised 4/2016
15. North American Waterfowl Management Plan 2012
16. Statewide Strategies to Improve Effectiveness in Protecting and Restoring Colorado's Wetland Resource *Including* the Rio Grande Headwaters Pilot Wetland Condition Assessment
17. Management Plan of the Pacific and Central Flyways for the Rocky Mountain Population of Greater Sandhill Cranes

Water Supply Reserve Account – Application Form

Revised October 2013

18. Colorado Statewide Forest Resource Strategy
19. Rio Grande County Hydrogeologic Study
20. North American Waterbird Conservation Plan
21. Regional Planning Part VI – Upper Rio Grande: February 1938 Natural Resources Committee
22. Journal articles, papers, thesis, etc such as the “Response of Nesting Ducks to Habitat and Management on the Monte Vista National Wildlife Refuge, Colorado” by Gilbert et al 1996 vol 60 no 1 Wildlife Monographs

3. Statement of Work, Detailed Budget, and Project Schedule

The statement of work will form the basis for the contract between the Applicant and the State of Colorado. In short, the Applicant is agreeing to undertake the work for the compensation outlined in the statement of work and budget, and in return, the State of Colorado is receiving the deliverables/products specified. **Please note that costs incurred prior to execution of a contract or purchase order are not subject to reimbursement.** All WSRA funds are disbursed on a reimbursement basis after review invoices and appropriate backup material.

Please provide a detailed statement of work using the template in Exhibit A. Additional sections or modifications may be included as necessary. Please define all acronyms and include page numbers.

REPORTING AND FINAL DELIVERABLE

Reporting: The applicant shall provide the CWCB a progress report every 6 months, beginning from the date of the executed contract. The progress report shall describe the completion or partial completion of the tasks identified in the statement of work including a description of any major issues that have occurred and any corrective action taken to address these issues.

Final Deliverable: At completion of the project, the applicant shall provide the CWCB a final report that summarizes the project and documents how the project was completed. This report may contain photographs, summaries of meetings and engineering reports/designs.

PAYMENT

Payment will be made based on actual expenditures and invoicing by the applicant. Invoices from any other entity (i.e. subcontractors) cannot be processed by the State. The request for payment must include a description of the work accomplished by major task, and estimate of the percent completion for individual tasks and the entire water activity in relation to the percentage of budget spent, identification of any major issues and proposed or implemented corrective actions. The last 10 percent of the entire water activity budget will be withheld until final project/water activity documentation is completed. All products, data and information developed as a result of this grant must be provided to the CWCB in hard copy and electronic format as part of the project documentation. This information will in turn be made widely available to Basin Roundtables and the general public and help promote the development of a common technical platform.

Water Supply Reserve Account – Application Form
Revised October 2013

The above statements are true to the best of my knowledge:

Signature of Applicant:



Print Applicant's Name: Mark Seaton

Project Title: SLV Watershed and Wildlife Conservation Assessment

Return an electronic version (hardcopy may also be submitted) of this application to:

Craig Godbout – WSRA Application
Colorado Water Conservation Board
1313 Sherman St., Room 721
Denver, CO 80203
303-866-3441, ext. 3210 (office)
303-547-8061 (cell)

Exhibit A - Statement of Work

Date: June 02, 2016

Water Activity Name – SLV Wetland and Wildlife Conservation Assessment

Grant Recipient – SLV Trout Unlimited Chapter

Funding Source – WSRA Rio Grande Basin Account

Introduction and Background

Natural Resource Agencies and organizations across the SLV provide habitat for a wide range of species through various land management strategies. Declining water tables, drought conditions, and the promulgation of groundwater rules and regulations by the State of Colorado have limited the available water resources necessary for providing habitat at different times of the year. Agencies and organizations are water users and represent a diverse share of surface and groundwater rights along with municipalities, industries, and private landowners. Various water users in the SLV have expressed their desire that the Natural Resource Agencies work collaboratively towards meeting their water needs while staying compliant with water administration including the Rio Grande Compact.

In the past, various SLV plans have outlined strategies to conserve priority species, identify areas that provide significant resources, and prioritize projects. Many of these plans are out of date or are too general to both prioritize species conservation and provide direction for on the ground management of resources. Additionally, the current mechanism commonly used to identify wetland location and type is the National Wetland Inventory (NWI). The NWI has not been ground-truthed in the SLV and has many known discrepancies in relation to type and location of wetlands across the Valley. This Assessment will address some NWI shortcomings.

This Assessment will incorporate existing plans and projects such as those outlined in the 1995 SLV Waterbird Plan, 2008 Colorado Natural Heritage Program Rio Grande Headwaters Pilot Wetland Condition Assessment, Rio Grande Basin Implementation Plan, and others to develop specific projects that are prioritized and can be recommended for future funding and implementation. Currently there is little information that tracks wetland extent across the SLV from pre-settlement to the present. Land use practices have changed over this time period and although some information exists, a complete dataset does not exist. This project provides an opportunity for collaboration and cooperation among agencies to manage and monitor resources across the SLV on public lands in a unified way that has not occurred in the past. Conservation goals developed in this plan will direct future restoration, enhancement, and protection of habitat and wildlife resources on public lands throughout the SLV. Ultimately the Assessment bridges the gap between planners and application, from regional to local staff.

Objectives

- Assess historic versus current wetland/riparian and land use changes since the 1870s.
- Identify priority species and their limiting resources across natural resource agencies.
- Identify surface and groundwater resources for each land management agency.
- Develop conservation goals and objectives along with a framework for future cooperative efforts to manage and monitor water and habitats on public lands across the SLV.
- Develop priority habitat conservation goals and potential water and wetland infrastructure projects.

There is one Task for this project:

Compilation and assessment of all of the existing historic and current wetland and wildlife data, determination of priority species and associated limiting resources, development of a framework for future cooperative work, development of conservation goals, identification of future projects and needs on public lands.

Task 1 – Assessment

The Assessment has been initiated to bring together natural resource agencies and organizations in a collaborative way in order to meet the demands of providing habitat for a variety of species with declining water resources across the SLV. The Assessment provides a link between conservation planning and on the ground efforts supported by the natural resource agencies and organizations on public lands. Work on this Assessment will begin upon receiving funding.

Description of Task

The Assessment will compile available information on historic and current wetland hydrologic patterns in the SLV, compile and analyze historic and current wildlife and water use information, and provide a framework for natural resource agencies and other organizations to better understand how to efficiently, effectively, and sustainably manage their water resources. Conservation goals and priorities will be established through identification of resources that are most limiting and believed to be necessary to maintain or improve population levels for priority wildlife species on public lands. Future projects that promote water efficiency and improve/enhance/preserve habitats for priority species will be identified on public lands.

Method/Procedure

Assessment Activities:

- Meet as needed with partners.
- Collect historic information (plans, reports, journal articles, maps, GIS databases) to help determine the extent of wetlands throughout the SLV from pre-settlement to current.

Water Supply Reserve Account – Application Form

Revised October 2013

- Integrate historic wetland information and on-going monitoring into existing planning, evaluation, and monitoring efforts.
- Identify priority wildlife species across natural resource agencies and develop ‘fact sheets’ for each species that highlight habitat needs specific to the SLV.
- Identify water resources for each of the lands managed by natural resource agencies and determine the long-term security of that water resource.
- Develop a framework for natural resource agencies to work cooperatively to provide and monitor limiting habitat resources for wildlife on public lands across the SLV.
- Develop priority habitat conservation goals on public lands.
- Develop and prioritize potential water and wetland infrastructure projects on public lands.
- Assess, plan, and adapt programs for the conservation of habitat for endangered, threatened, and sensitive wetland-associated species throughout the SLV focusing on public lands.

Deliverables

- Priority species factsheets specific to the SLV
- Matrices and maps for all priority species indicating habitat threat by water source and land management agency
- A prioritized list of potential water delivery/enhancement projects on public lands
- Recommend conservation goals and priorities for natural resource agencies
- Framework for other conservation organizations to prioritize future work and resources
- Identification of limiting resources on public lands for each of the priority species
- Identification of where collaborative efforts among agencies may work in the future to meet water needs
- Assessment will be available in .pdf form online and will be provided to partners upon completion
- Presentations by Wetland Dynamics, LLC relating to the Assessment may be provided as needed for partners or any other interested stakeholder
- Template for other basins for setting future conservation goals

Water Supply Reserve Account – Application Form

Revised October 2013

SLV Wetland and Wildlife Conservation Assessment Budget Table					
Task	Description	Responsible Party	Partners and Financial Contribution		Total Cost by Task
1	SLV Wetland and Wildlife Assessment	Wetland Dynamics & CPW, BLM, USFWS, NRCS, NPS	SLV Conservation Connection Initiative (pending)	\$42,000.00	\$228,000.00
			WSRA Funds (pending)	\$39,000.00	
			Bird Conservancy of the Rockies (pending)	\$3,000.00	
			Agency Personnel Time (in-kind)	\$144,000.00	
Total Project Cost					\$228,000.00

SLV Wetland and Wildlife Conservation Assessment Timeline		
Task	Responsible Party	October 2016 through January 2019
1	Wetland Dynamics and Natural Resource partners	Assessment

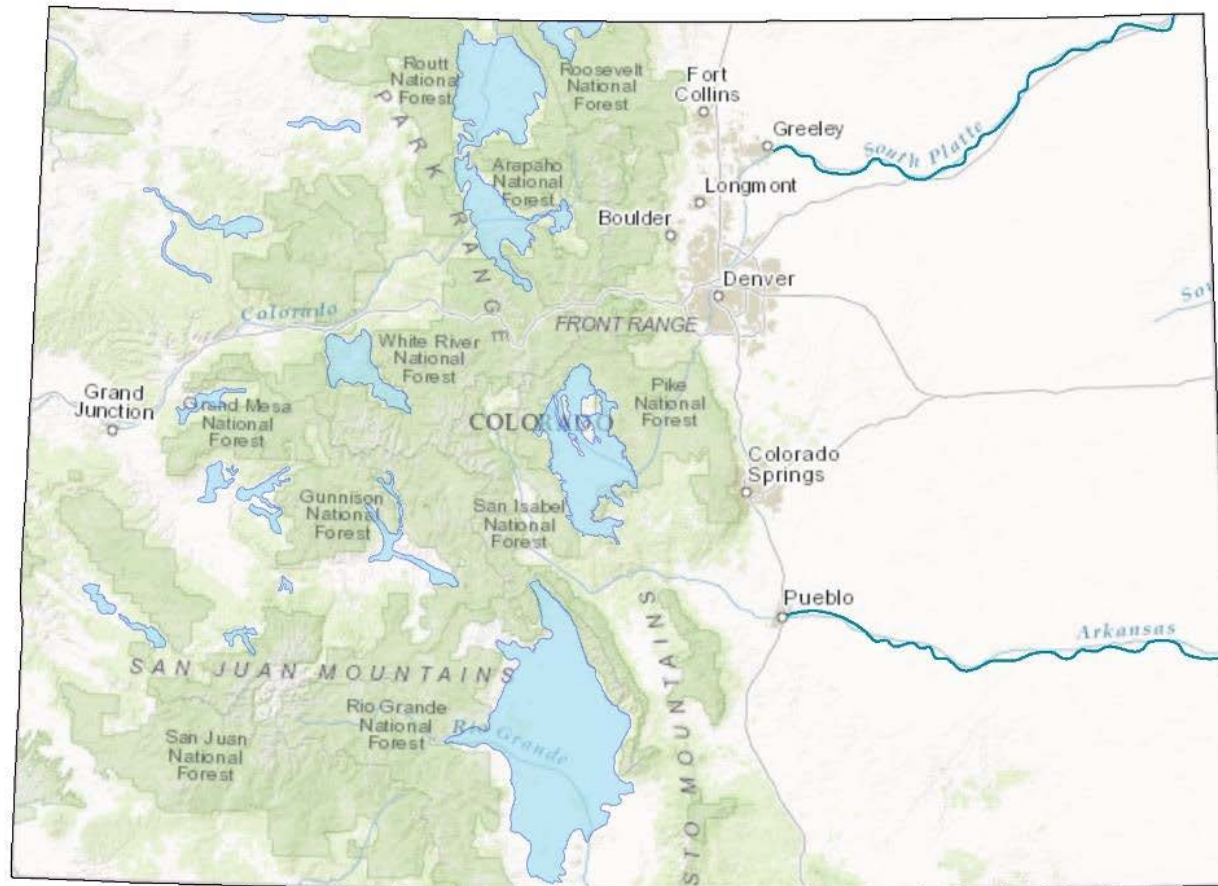


Figure 1. Colorado priority wetland landscapes and riparian corridors shown in blue.

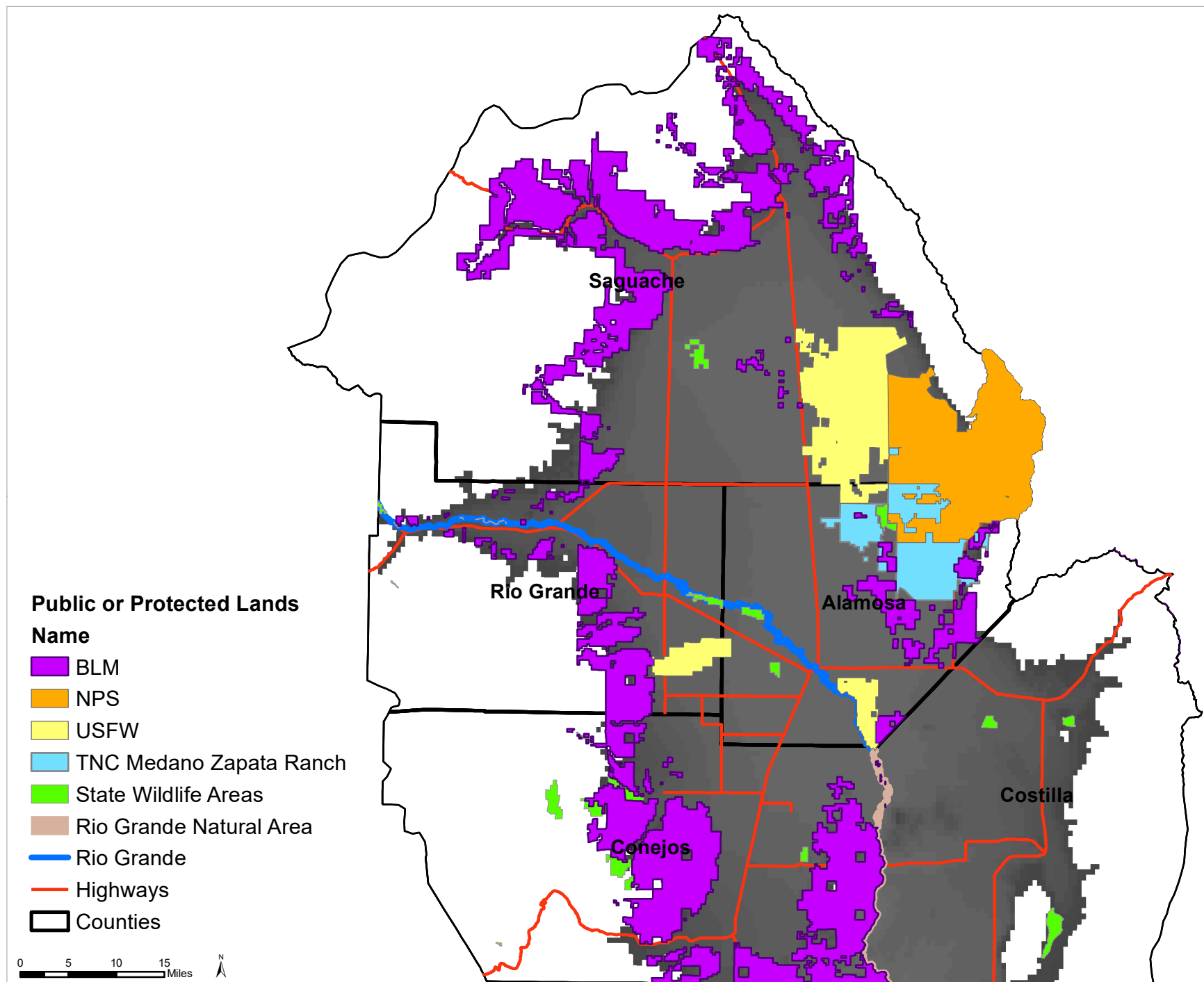


Figure 2. The 5 counties in the San Luis Valley and the approximate area, up to 8500' (gray area) in elevation, that will be included in the GIS analysis and Assessment in relation to public lands.